

THE WEEKLY MO'OLELO

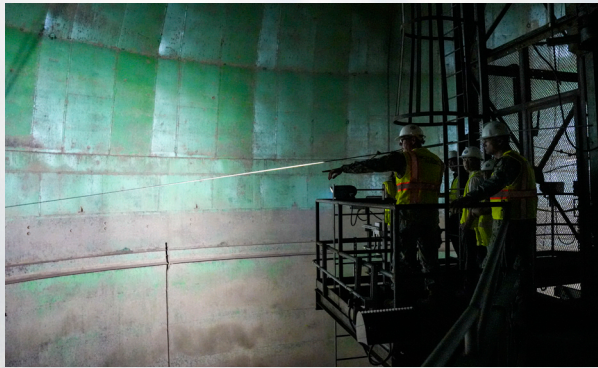
Wednesday, February 12, 2025



Keep up with the latest news from across Navy Region Hawaii. Click on any story to read the full version online. Some networks do not allow access to embedded links. For those readers, right click the PDF and open in your internet browser.

Upcoming Events

- Extended Drinking Water Monitoring Booths: Feb. 20 at Navy Exchange Mall, 4725 Bougainville Drive, 10 a.m.– 1 p.m.; Feb. 27 at NEX Pearl City Mini Mart, 794 Lehua Ave, 10 a.m. – 1 p.m.
- Navy Closure Task Force-Red Hill Tank Cleaning Webinar on Feb. 24 at 5 p.m.
- Save the Date: Navy Closure Task Force-Red Hill Open House at Keehi Lagoon Memorial on Mar. 12 from 5-7 pm.



First Two Red Hill Tanks Undergo Pressure Washing

The Navy began pressure washing tanks 7 and 8, the first two tanks to be pressure washed at the Red Hill Bulk Fuel Storage Facility, in January. The pressure washing process, approved by the Environmental Protection Agency and Hawaii Department of Health (DOH), includes using a mixture of 3% Simple Green cleaning solution and 97% water. After pressure washing, the cleaning solution is rinsed off, collected, analyzed, and disposed of in accordance with DOH approved waste management requirements.



Military, Local Agencies Practice Kolekole Pass Evacuation Route

U.S. Army Garrison Hawaii, in partnership with Joint Base Pearl Harbor-Hickam, Navy Region Hawaii, Hawaii Department of Transportation, Hawaii Emergency Management Agency, City and County of Honolulu Department of Emergency Management, Honolulu Police Department and Honolulu Fire Department, conducted a full-scale exercise from Lualualei Naval Complex through Kolekole Pass and Schofield Barracks. The exercise simulated the use of Kolekole Pass as a potential evacuation route during an emergency.



Voyaging Canoe Fosters Human Connection During Pearl Harbor Visit

The historic voyaging canoe Hōkūle'a has been described as a symbol of resilience, revival, cultural pride, environmental stewardship, peace, and hope. During the canoe's recent visit to Pearl Harbor, she became a symbol of human connection. "Out of all the voyages we've done, going around to all of the communities within Hawaii, this is the most meaningful because this is where we connect with the people of Hawaii," said Captain Bruce Blankenfeld, a master navigator with the Polynesian Voyaging Society.



PMRF Sailors, Civilians Conduct Annual “Egg-Sweep”

Sailors and civilians at Pacific Missile Range Facility on Kauai scoured the installation grounds in search of albatross nesting areas and eggs during last month’s annual “egg-sweep.” The egg-sweep is part of the Laysan Albatross Translocation Program, which involves relocating albatross and their eggs to other areas on Kauai to keep the birds away from aircraft and reduce the strike threat to the animals, personnel and equipment. The translocation program is part of the Bird Strike Hazard Initiative.



Retired Operations Director Reflects on 50 Years of Service

Shawn Morrissey retired last month as director of operations for Navy Region Hawaii, capping off a 17-year career as a Navy civilian, 30 years as an active-duty service member and four years as a midshipman at the U.S. Naval Academy. Morrissey is proud of his 51 years with the Navy and emphasized the ongoing importance of the service and its mission: “We’re the people who protect the sovereignty of the nation and the values that the nation represents,” he said.



This Week in History: February 1904

In February of 1904 the first detachment of 49 Marines arrived in Hawaii. Though initially housed in a coal warehouse in Honolulu they would soon move to their new home in the Marine Barracks at Pearl Harbor. The Marines remained at Pearl Harbor for 90 years before moving to Marine Corps Base Hawaii in Kaneohe in 1994.




Laulima Navy underscores our responsibility to the community and the ways we work alongside partners to help and support our neighbors. Service to others and a commitment to the greater good are values we hold in high regard. It is a privilege for all of us to call Hawaii home and we seek every opportunity we can to show how much we treasure this place. In this edition, we share a few ways we help to care for the community. Scan the QR code to learn more about Laulima Navy.




FOR ACCESS TO NEWS, VIDEOS, AND PHOTOS FROM NAVY REGION HAWAII AND OTHER SERVICES, VISIT DEFENSE VISUAL INFORMATION DISTRIBUTION SERVICE (DVIDS), THE CNRH WEBSITE, OR FOLLOW US ON SOCIAL MEDIA.


 /NavyRegionHawaii/
/JBPHH
/PacificMissileRangeFacility

 Commander-navy-region-hawaii

 /C-NRH /JBPHH
/PMRF /NCTF-RH

 /jointbasephh

 /JointBasePHH
/NavRegHawaii

 cnrh.cnic.navy.mil/
navyclosurerelease.navy.mil/