

# Welcome!

Please sign in and get added to the project mailing list.

## AGENDA

**5:00 - 6:30 p.m.**

### Open-house

- view displays
- ask questions
- make comments

**This meeting is an informal process where participants**

- can learn about the project,
- explore various displays related to the meeting purpose, and
- ask questions.

A court reporter will be present to take formal comments, or you can provide feedback other ways.



For more information

**Comments  
can be  
submitted**

**4  
Ways**

**Submit comments during this public involvement process for consideration in the EIS by:**

- 1** Submitting a written comment at this meeting.
- 2** Making an oral comment to the court reporter at this meeting.
- 3** Emailing comments to [SVADAEIS@tetrattech.com](mailto:SVADAEIS@tetrattech.com) at a later date.
- 4** Mailing comments via U.S. mail to:  
SVADA EIS c/o Tetra Tech  
107 St. Francis Street, Suite 2370  
Mobile, AL 36602

*Comments will be accepted anytime but submission **no later than 30 days from the date of this meeting** will ensure your comment is considered during the National Environmental Policy Act analysis.*



Base Realignment and Closure Savanna Army Depot Activity  
**ENVIRONMENTAL IMPACT STATEMENT**

CEQ Unique Identifier: EISX-007-21-000-1729699335

# Base Realignment and Closure

## National Environmental Policy Act Documentation

### NEPA The National Environmental Policy Act (NEPA) of 1969, as amended

- Addresses concerns about federal actions and their effects on the environment
- Is implemented when a federal agency develops a proposal for a project that might affect the human or natural environment

### NEPA's Main Objectives

- **Ensure high-quality analysis** of potential effects of proposed major federal actions
- **Inform the public** of proposed federal activities that might affect environmental quality
- **Encourage and facilitate public involvement** in the decision-making process
- **Inform decision-making** by identifying issues of concerns and potential effects of proposed action implementation

### Proposed Action and Alternatives

#### NEPA requires the agencies to evaluate

- **Proposed Action:** The project being considered for implementation
- **No Action:** Conditions if the project under consideration is not implemented
- **Reasonable alternatives** to implementing the project Proposed Action

#### SVADA BRAC EIS Major Milestone Schedule

Milestone	Completion Date
NOI in Federal Register	Winter 2024
Scoping Meeting	Winter 2025
Scoping Period	Winter 2025
Draft EIS for Public Review	Fall 2025
Draft EIS Public Meeting	Fall 2025
Draft EIS Comment Period Closes	Winter 2025
Final EIS for Public Review	Spring 2026
Final Record of Decision	Spring 2026



## Base Realignment and Closure Savanna Army Depot Activity ENVIRONMENTAL IMPACT STATEMENT

CEQ Unique Identifier: EISX-007-21-000-1729699335

# Base Realignment and Closure

## National Environmental Policy Act Documentation

### BRAC Base Realignment and Closure (BRAC) is:

- Department of Defense process to reorganize military bases to meet changing needs
- Ensures military resources are used effectively while minimizing the negative effects on local communities



Courtesy of the U.S. Army

### SVADA Savanna Army Depot Activity

SVADA, established in 1917 during World War I, supported a proof and test facility for artillery guns and howitzers produced at Rock Island Arsenal, IL. Operations were expanded to include storage of ordnance and the loading and renovation of shells and bombs. Levels of ammunition maintenance and supply operations were reduced in 1972.

BRAC 95 Disposal and Reuse of the Savanna Army Depot Activity Environmental Impact Statement, Savanna, Illinois (1997 BRAC EIS) was finalized for SVADA in July 1997. SVADA ceased operations and officially closed on May 20, 2000.

### The BRAC process

- ✓ Commits to necessary environmental remediation or certifies SVADA property parcels are clean from environmental contaminants
- ✓ Facilitates Army property transfer to federal, state, or local agencies

#### Owners of Savanna Army Depot Activity parcels:

- U.S. Fish and Wildlife Service (USFWS)
- U.S. Army Corps of Engineers (USACE)
- Illinois Department of Natural Resources (DNR)
- Jo-Carroll Depot Local Redevelopment Authority (LRA)



## Base Realignment and Closure Savanna Army Depot Activity ENVIRONMENTAL IMPACT STATEMENT

CEQ Unique Identifier: EISX-007-21-000-1729699335

# The BRAC SVADA

## Environmental Impact Statement Alternatives

View full plan [here](#).



**EIS**  
will be prepared  
because:

- There have been substantial changes to the proposed action and,
- Significant new circumstances and information relevant to environmental concerns and bearing on the proposed action's effects have been identified.

**Purpose:** Army disposal of LRA Parcel 20 through transfer to the LRA or other appropriate recipients.

**Need:** Carry out BRAC recommendations for the closure of SVADA, which became law, and make the parcel available for reuse.

### Alternatives

**NEPA requires consideration of all alternatives – no alternative has been selected. The EIS will evaluate all of the following alternatives.**

- ➔ **Proposed Action:** The Proposed Action is the Army's disposal of LRA Parcel 20 by transferring it to the LRA or other appropriate recipients for their reuse. The EIS will analyze the potential direct effects of the Army conveying LRA Parcel 20 and the potential indirect effects of reuse of the parcel.
- ➔ **No Action Alternative:** Parcel 20 is retained in caretaker status by the Army. The No Action Alternatives is also the baseline against which the Proposed Action and other alternatives are compared.
- ➔ **Reuse Alternatives:** The EIS considers five reuse alternatives: three reuse alternatives proposed by the LRA in their 2023 reuse plan that focus on creating a new port facility with docks, wharves, conveyor system, and roads, plus recreational facilities and potentially solar development; a recreation only reuse alternative; and a recreation and solar reuse alternative.

#### LRA Reuse Features

- An 800-foot by 100-foot dry and liquid bulk wharf
- A conveyor system
- A floating dry dock
- A haul road
- A 350-foot lift-on/lift-off wharf
- A 600-foot lift-on/lift-off wharf
- A liquid bulk pipeline
- A recreational boat ramp
- A recreational trail
- A fleet repair area
- A solar farm or recreational area atop a closed landfill
- Travel lift piers with a landside dry dock
- A wharf access road
- Dredging up to 1.24 million cubic yards of sediment from 246 acres within Commander's Pond (16 acres of aquatic habitat restoration within Commander's Pond)
- Barge fleeting areas in Brick House Slough and the Mississippi River



## Base Realignment and Closure Savanna Army Depot Activity ENVIRONMENTAL IMPACT STATEMENT

CEQ Unique Identifier: EISX-007-21-000-172969335

# NEPA

## Public Scoping

The Department of the Army invites you to define important environmental quality issues and identify alternatives to the Proposed Action.

### What is Scoping?

- Scoping is part of the EIS preparation process.
- It is used to identify important environmental issues deserving of study.
- It is an opportunity for the Army to inform the public of a proposed action and possible alternatives.
- It is an opportunity for the public to provide input on what should be considered as the Army develops the scope of the EIS, such as environmental quality issues and identifying alternatives to the Proposed Action.

### Potential resource areas that may be affected:

#### Aesthetics and Visual Resources

- Landscape character
- Historic viewsheds
- Sensitive views

#### Air Quality

- National Ambient Air Quality Standards
- Emissions and permitting
- General Conformity
- Climate change and greenhouse gases

#### Biological Resources

- Vegetation
- Threatened and endangered species
- Wildlife
- Sensitive species and habitat
- USFWS/USACE refuge property

#### Cultural and Historic Resources

- Cultural resource management
- Traditional cultural resources
- Prehistoric and historic resources
- National Historic Preservation Act Section 106 consultations

#### Geology and Soils

- Physiography and topography
- Soils
- Geology
- Geologic hazards

#### Hazardous Materials and Waste Management

- General hazardous materials and waste management
- Landfill
- Contaminated sites
- Lead, asbestos, and pesticides

#### Land Use

- Land Use Ownership and Districts
- Land Use Policies, Plans, and Controls

#### Noise

- Ambient noise
- Construction noise
- Operational and maintenance noise

#### Socioeconomics

- Employment and Income
- Environmental justice

#### Transportation

- Roadway networks and traffic

#### Utilities and Infrastructure

- Water and wastewater
- Stormwater management
- Solid waste management
- Electricity
- Natural gas
- Communications

#### Water Resources

- Surface water features and drainage
- Hydrology
- Groundwater



## Base Realignment and Closure Savannah Army Depot Activity

# ENVIRONMENTAL IMPACT STATEMENT

CEQ Unique Identifier: EISX-007-21-000-1729699335

# The BRAC SVADA

## Environmental Impact Statement Mitigation

You are  
invited to comment  
on these, or other  
concerns you might have  
regarding the SVADA  
proposed action and  
alternatives.



### Mitigation is:

**Avoiding, minimizing, and compensating for unacceptable effects on the human environment and other resources that might result from a proposed action.**

### Previously identified areas of potential concern at SVADA that may require mitigation include:

#### **Waters of the United States (WOTUS), including wetlands**

- Dredging of WOTUS in Commander's Pond
- Access channel dredging in Brick House Slough
- Barge floating dredging in Brick House Slough and the Mississippi River

#### **Floodplains**

- Redevelopment alternatives may be constructed within the floodplain

#### **Upper Mississippi River National Wildlife and Fish Refuge**

- Redevelopment activities may affect Upper Mississippi refuge property or property currently managed by the U.S. Fish and Wildlife Service for conservation

#### **Cultural and historic resources**

- Cultural and historic resources can be expected within alternative's Area of Potential Effect (APE)

#### **Hazardous and toxic contamination**

- Areas of remediated hazardous and toxic contamination are in the project area
- A capped landfill is in the project area

#### **Inland navigation features**

- The proposed redevelopment includes modification of the Mississippi River Navigation Channel
- Inland navigation features may be impacted by proposed redevelopment
- Activities associated with operation of the LRA's proposed inland port could affect navigation features, water conveyance, and sediment conveyance in the project vicinity

#### **Federally and state listed protected species**

- Federally and state protected species have been documented in the project vicinity and may be affected

#### **Federally Protected Species That Might Occur on LRA Parcel 20**

Scientific name	Common Name	Federal Status	State Status
<b>Mammals</b>			
Myotis sodalis	Indiana Bat	E	E
Myotis septentrionalis	Northern Long-Eared Bat	T	T
<b>Mussels</b>			
Lampsilis higginsii	Higgins Eye (pearl mussel)	E	E
Plethobasus cyphus	Sheepnose Mussel	E	E
<b>Flowering Plants</b>			
Platanthera leucophaea	Eastern Prairie Fringed Orchid	T	E

Sources: IDNR 2015; USFWS 2020.

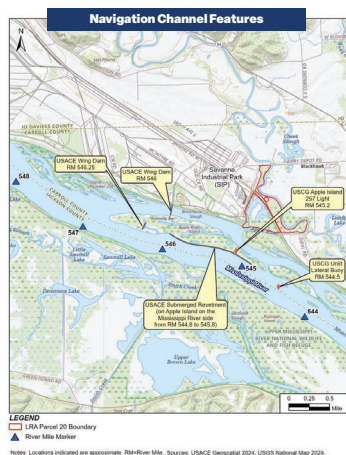
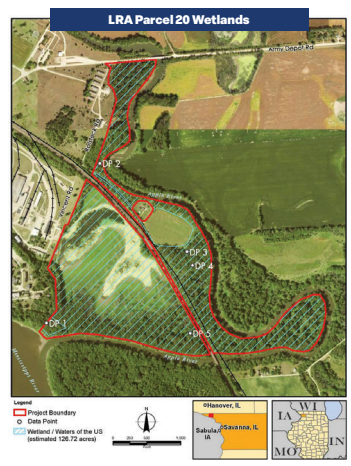
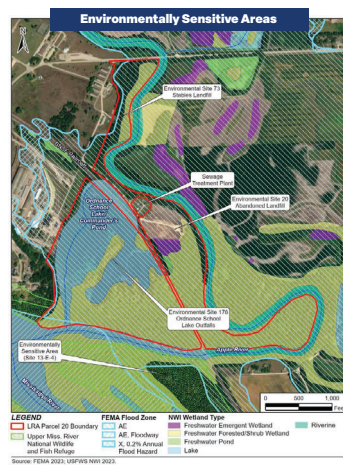
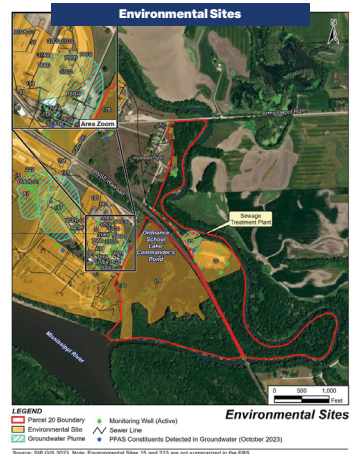
Note: E=endangered, T=threatened.



## Base Realignment and Closure Savanna Army Depot Activity ENVIRONMENTAL IMPACT STATEMENT

CEQ Unique Identifier: EISX-007-21-000-1729699335





CEQ Unique Identifier: EISX-007-21-000-1729699335