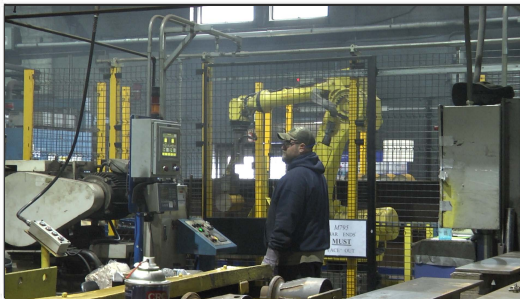




1 Photo: HQ bldg. SCAAP

Pull into Scranton Army Ammunition Plant, on the right you will see the employee parking lot. Drive forward to the last building on the right, this is the Headquarters Bldg. Park on the side in visitor parking. Meet w/ staff for tour.



2 \*\*\*Be cautious where you stand taking photos in this area, the lift swings over. The floor is marked with a safety zone, if you go outside of the safety zone you are at risk of being hit by the swing.

### Forge Shop:

The forge shop is where we take large rolls of metal and cut them down into billets.

The photos you will take first in the Forge shop are of the billet saw.



### Forge Shop:

After the billets are cut, they go to heat.

The second thing you will take photos of in the Forge shop will be of the heaters.



4

Forge Shop:

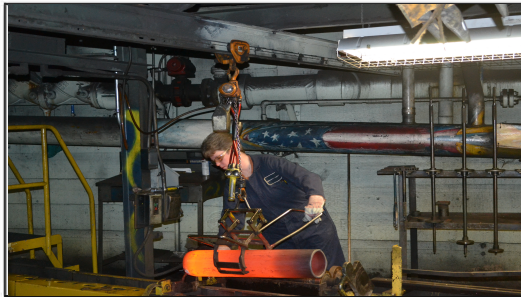
The next thing you will photograph in the Forge Shop will be the billets being forged.

---

---

---

---



5

The Subway:

The next thing you will be filming is the subway. After forging, the conveyor moves the hot billets through the subway for hot inspection.

---

---

---

---



6

The subway:

The next photos are of the cooling process.

---

---

---

---



1

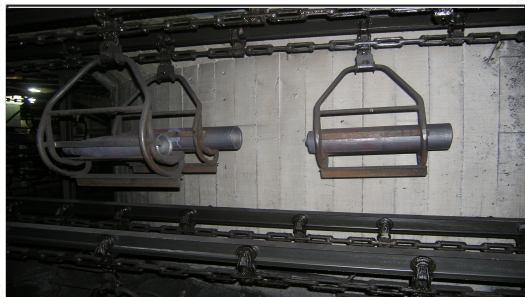
Subway:

The next process is the Shot-blast



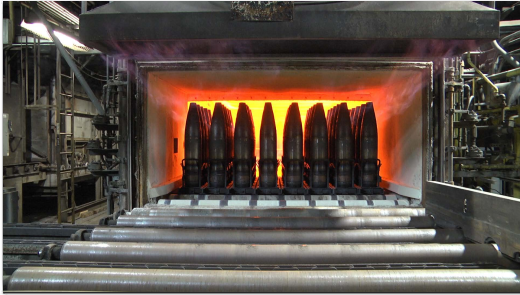
2

The Subway: The next process is cold inspection.



3

The subway: finally, you will get shots of the conveyor belt transporting the billets.



1

Heat treat Shop:

This is where the projectiles are heat treated.

---

---

---

---

---



11

Joiner Building: This is where we clean the projectiles up to prepare them after they are heat treated.

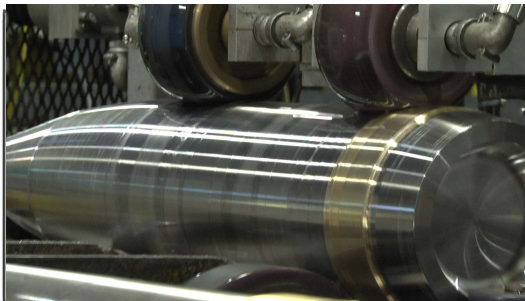
The first photos you will take here are of the shotblast process.

---

---

---

---



12

Joiner Building:

We also mill the projectiles flat in this building.

---

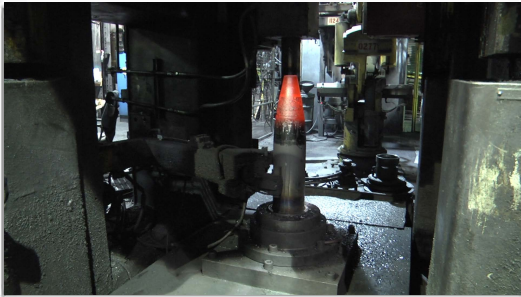
---

---

---

---



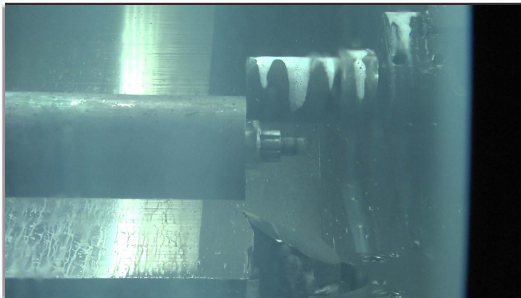


13

The Production shop:

This is where projectiles get the cone shape,  
known as the nose.

The first thing you will take photos of is the  
nosing process.



14

The Production Shop:

The next thing you will take photos of is the turn  
machines, the basic turn, and the finish turn.



15

The Production Shop:

Adding phosphate.



16

The Production Shop:  
now, the projectiles can go through the  
paint process.  
\_\_\_\_\_  
\_\_\_\_\_  
\_\_\_\_\_  
\_\_\_\_\_



17

The Production Shop:  
Finally, the projectile cases are packed up for  
shipment.  
\_\_\_\_\_  
\_\_\_\_\_  
\_\_\_\_\_  
\_\_\_\_\_



\_\_\_\_\_  
\_\_\_\_\_  
\_\_\_\_\_  
\_\_\_\_\_  
\_\_\_\_\_  
\_\_\_\_\_