



My

CFAY

Weekly
週刊

Volume 6, Issue 33

令和5年9月1日

Sept. 1, 2023

This Week at Fleet Activities, Yokosuka



Photos by Taylor Ardito and MC2 Conner Houghtaling, CFAY Public Affairs



**IN THIS
ISSUE:**

**100th Anniversary of Great
Kanto Earthquake of 1923**

MWR Events

Beyond the Gate

AROUND CFAY

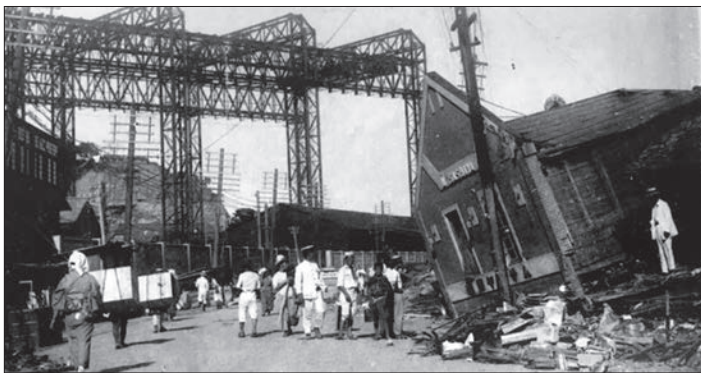


100th Anniversary of Great Kanto Earthquake of 1923 and Its Effects on the Naval City Yokosuka

Story by Ryo Isobe, CFAY Public Affairs

One hundred years ago, 11:58 a.m. on Sept. 1, 1923, a big shake hit the Kanto area of Japan, which was later called the Great Kanto Earthquake of 1923. The shaking lasted in some places up to 10 minutes. The quake was devastating, as more than 100,000 people died or went missing in areas including Tokyo, Kanagawa, Chiba, Saitama, Yamanashi, Ibaraki and Shizuoka. Yokosuka was no exception, as almost 700 lives were lost and more than one thousand injured.

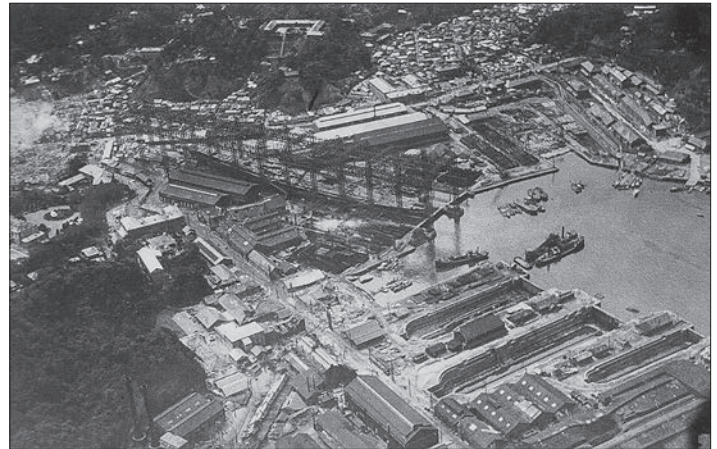
Out of more than 20,000 victims in Kanagawa prefecture, about 6,000 people died due to the earthquake itself – buried or crushed under the building – more than in Tokyo, where the death toll in the same category was around 3,500 out of roughly 70,000. That was because the epicenter was at the tip of the deep ocean trench in the northwest of Sagami Bay. Of all the people who died in the Great Earthquake, about 90 percent perished in the following fires.



The Siodome district of Yokosuka after the quake, which is supposed to be the area across the Keikyu Shioiri Station.

In Kanagawa, a tsunami warning was issued in the evening. Yet, only a small surge of tsunami waves arrived at the city area of Kamakura, and 77 houses were submerged. The damage was less severe in contrast to the Shizuoka areas, with many houses swept up by the high tsunamis.

The Imperial Japanese Navy's (IJN) "Yokosuka Chinjufu," or the Yokosuka Naval District, the predecessor of Commander, Fleet Activities Yokosuka (CFAY), was hard hit as well. According to "Taisho Daishinsai-shi" (Taisho Great Earthquake Record), the fire burned down the hospital, the Imperial Japanese Naval Engineering College, the Naval Corps, and the Post Office,



A bird's eye view of Yokosuka Naval Arsenal after the Great Kanto Earthquake of 1923 occurred Sept. 1. This photo was taken on Sept. 3 or 4. The ship in the center under the gantry crane is battleship Amagi, which fell off the slipway and was later scrapped.

which according to the author was "tantamount to total destruction of the naval city."

The exact details of the damages, however, had not been disclosed for security reasons, so the seriousness of the catastrophe had remained in speculation and rumors.

Further pieces of information later came out in a book, "The Great Kanto Earthquakes and the Miura Peninsula," written by Goro Kezuka, a former government official and an auditor for a finance security company, published in 1992. At the Yokosuka Naval Arsenal, which built and repaired the IJN ships and submarines, more than 107 lives were claimed and almost 130 were either heavily or lightly injured.

As to the ships, submarines No. 10 and No. 14, which had been under construction in two dry docks, were flung out of them. The pre-dreadnought battleship Mikasa, anchored at bay, was washed away by the tsunami as it sustained holes in the hull. It had to be tugged away to the shallows with its damaged bottom sunk to avoid overturning. The IJN battleship Amagi fell off the slipway and later had to be dismantled due to its severe damage.

The headquarters building of the Yokosuka Naval District was irreparably damaged along with the other buildings. The headquarters building was initially built in 1890, six years after the Navy Ministry of the Imperial's sudden decision to relocate

the Navy headquarters in the Kanto area from Yokohama to Yokosuka. The building made of bricks completely collapsed during the earthquake. The current C-1 building standing in its place is the second one rebuilt after the quake in 1926, just 7 months after its groundbreaking.



The first headquarters building of the IJN Yokosuka District, which collapsed during the Great Kanto Earthquake of 1923.

It is currently the Commander, Navy Region Japan/ Commander, U.S. Naval Forces Japan headquarters.

Despite the chaotic confusion, the subordinate offices, commands and units onboard the Yokosuka District immediately organized a rescue operation while securing law and order in the local area. They also provided food and water from the Shitsugaya Reservoir and opened part of the Yokosuka Naval Arsenal as an evacuation site. It was due to cooperation between the locals and military service organizations that post-disaster recovery was comparably quick to the other areas by demonstrating resilience as a naval port city.

The Imperial Japanese Navy also started a full-fledged rescue operation immediately after the earthquake. More than 100 vessels assigned to the Combined Fleet and the three Naval Stations (Yokosuka, Kure, Sasebo) were mobilized for relief operations, such as the transportation of food and goods, while also investigating the damages of affected areas in order to secure the stability of the area. The newly commissioned super-dreadnought battleship Nagato, the flagship of the IJN Combined Fleet was one of them.

Since the traffic on land was tremendous and the Tokaido line was disrupted, the relief operation from the sea was one of the most significant advantages and assets for the situation.

Two days after the quake on Sept. 3, Japan received a message of condolences from the United States to the effect that it would extend as much help through the Red Cross as possible, to which Japan responded with a message of appreciation. The United States provided a quick response, just as Japan had previously done in times of natural disaster in America. Japan was the most generous supporter compared to any other country during the 1906 San Francisco Earthquake, where Japan donated half a million yen, which was one-thousandth

of the national budget of Japan during that period.

A few days after the disaster, foreign rescue vessels started to appear near Tokyo Bay.

In those days, for security reasons, foreign vessels had limited access to Japanese ports; Only Hakodate, Niigata, Yokohama, Kobe and Nagasaki were open to them. Particularly, waters south of Tokyo, Yokohama and the Shonan areas were fortified zones, and Japan didn't want foreign countries to learn about the degree of the earthquake damage.

Japanese officials began to see a difficult situation: They had to keep valuable military intelligence and knowledge a secret, including a number of fortresses and military factories in Tokyo Bay, as well as the damages inflicted on them, while also showing appreciation for the goodwill of foreign countries. In the end, Japan decided to accept support and relief operations from abroad with restricted conditions.

On Sept. 2, the U.S. Department of the Navy ordered Adm. Edwin Anderson Jr., Commander in Chief of the Asiatic Fleet, stationed in China, to dispatch a division of destroyers to Japan to help the devastated Japan. He arranged for USS Borie (DD 215) to enter Nagasaki on Sept. 4 as a communication vessel. He helped establish a wireless system to secure coastal and Pacific communications networks. He also sent USS John D. Edwards (DD 216) to Kobe to aid survivors and carry rescue workers and food to Yokohama. On Sept. 7, Anderson arrived at Yokohama from Zhifu, China, aboard the Pennsylvania-class armored cruiser USS Huron (ACR 9/CA 9) with relief supplies.

The U.S. Army in the Philippines also got an order to get mobilized, and not only military vessels but also merchant ships delivered relief supplies, including 3,000 beds, 150 tons of medical supplies, 750 tons of food and a medical support force to Japan by Sept. 5.



A Navy Chaplain ministers to the dead, burned beyond recognition in the ruins of the U.S. Naval Hospital at Yokohama, Japan. He was part of an Asiatic Fleet search and recovery party sent to the hospital site after the earthquake. Collection of Henry J. Poy. U.S. Naval History and Heritage Command Photograph.

The U.S. ships were allowed to enter Japanese waters but were monitored and accompanied for surveillance.

Among the confusion caused by the disaster, diplomatic problems, misunderstandings, and inconveniences, the U.S. Navy impressed many Japanese officials and military personnel.

Both sides found respect and friendship, strengthening the two countries' relationship. That very sentiment was heard in the words of Anderson as reported to the vice minister of the Navy Ministry by Rear Adm. Seizo Kobayashi, Admiral Commanding the 3rd Squadron, First Fleet, Combined Fleet:

"He expressed his gratitude, because my positive negotiations with the naval authority made his mission smoothly completed after he arrived in Japan for the relief operations of the earthquake. He praised Japanese people's spirit toward reconstruction in spite of an unprecedented disaster in history. He also cited an example of San Francisco, where the people thrived more than before, after the earthquake, and expected for Tokyo and Yokohama to flourish in another 10 years.... All the U.S. citizens would like to have a friendly relationship with Japan and wish for the prosperity of Japan. The U.S. Navy particularly has a good impression of the Japanese Navy. Their people worked hard to rescue the Japanese people in response to our country's disaster with a sudden notice and the U.S. Navy did their best to do the job to prove it." (Taisyo 12 Koubun Bikou 161)

Over the past 10 years in Japan, between 1,000 to 1,500 earthquakes have struck the Japanese Archipelago each year. The high volume of earthquakes is because the islands sit on four huge slabs of the earth's crust, known as tectonic plates. When plates mash and grind together, they trigger deadly earthquakes. According to the Japan Meteorological Agency (JMA), 1,964 earthquakes of more than seismic intensity 1 were observed in 2022. The seismic intensity in Japan is marked on a scale from 1 to 7, where the seismic intensity of 1 is when the tremor is smaller and felt by only a few people inside the building.

During the Great Kanto Earthquake of 1923, seismic intensity

6 by JMA seismic scale standards was observed over large areas across the Kanto Plain, where more than 100,000 buildings collapsed. The earthquake would have registered as approximately 7.9 on the Richter scale, which is often used in the United States as a measure of an earthquake's strength. Charles Richter did not present his landmark magnitude scale to the public until 1935, which was 12-years after the Great Kanto Earthquake.

Yokosuka City Museum is currently commemorating the 100th anniversary of the Great Kanto Earthquake with an exhibition of photos and panel displays. The event provides an opportunity to gain awareness that earthquakes can happen anytime and anywhere and to understand how to respond based on previous lessons learned. The exhibition is held until Sept. 10 (Sun).

CFAY has also long commemorated the quake with a monument located in front of building C-1, the rebuilt site of the previously collapsed Yokosuka Naval District headquarters, near the CFAY Main Gate. The monument depicts a clock with its hour and minute hands pointing the 11:58 a.m. the moment the earthquake struck.

For more than 75 years, CFAY has provided, maintained, and operated base facilities and services in support of the U.S. 7th Fleet's forward deployed naval forces, tenant commands, and thousands of military and civilian personnel and their families.

QUARTER 3

CFAY TOWN HALL

Main Base	Ikego
September 7	September 12
6 p.m.	6 p.m.
CRC AOB/ICR	Ikego Elementary

CFAY's quarterly Town Halls are scheduled in September. There is no live stream scheduled. A recording of the Main Base Town Hall is scheduled for Facebook page.



TCCOR

Tropical Cyclone Conditions of Readiness and What they Mean to You

TCCOR 5

Destructive winds of 50 knots or greater are possible within 96 hours.

TCCOR 4

Destructive winds of 50 knots or greater are possible within 72 hours.

TCCOR 3

Destructive winds of 50 knots or greater are possible within 48 hours.

TCCOR 2

Destructive winds of 50 knots or greater are anticipated within 24 hours.

TCCOR 1

Destructive winds of 50 knots or greater are anticipated within 12 hours.

TCCOR 1: CAUTION

Winds of 35-49 knots sustained are occurring at a particular installation.

TCCOR 1: EMERGENCY

Winds of 50 knots sustained or greater occur at a particular installation.

TCCOR 1: RECOVERY

Destructive winds of 50 knots or greater have subsided. Survey and work crews are sent out to determine the extent of the damage.

ALL CLEAR

The storm is over, and recovery efforts are considered complete by the installation commander.



American Red Cross

American Red Cross Summer Classes

- **Adult and Pediatric First Aid/CPR/AED**
- **Babysitter's Training with Pediatric First Aid/CPR**
- **Basic Life Support**

All classes are blended learning courses including an online portion, and an instructor-led classroom skill session. The online portion must be completed prior to the skills test.



CPR/AED/First Aid Course (\$55)

- Monday, Sept. 4, 9 a.m. to 12 p.m.
- Sunday, Sept. 24, 9 a.m. to 12 p.m.

Basic Life Support Course (\$55)

- Wednesday, Sept. 6, 1 to 4 p.m.

Babysitting Basics (\$70) Recommended for ages 11-17)

- Saturday, Sept. 9, 9 a.m. to 12 p.m.
- Friday, Sept. 22, 9 a.m. to 12 p.m.

Additional classes available by request for group of plus three.

To register, email: Yokosuka@redcross.org with the class and preferred date/time. You will receive a payment link and be asked to send your receipt in order to guarantee a spot in the course.

FFSC WEEKLY

More details on FFSC YOKOSUKA FB page



AOB/ICR

Sept 5-7 at 0800

Basics of Japanese

Sept 5 at 1030

Ikego Japanese Language Series

Sept 5 at 1200

Private Organization

Sept 5 at 1330 (Virtual)

DOL-Teams Federal Hiring

Sept 6 at 0900

Pre-Marriage Seminar

Sept 6 at 0930 (Virtual)

Active Parenting Teens

Sept 6 at 1030

My Education Track

Sept 7-8 at 0800

Developing your Spending Plan

Sept 7 at 0930 (Ikego)

Effective Resume Writing

Sept 7 at 0900 (Civilian)

Resiliency Bootcamp

Sept 7 at 1130

SAPR VA Refresh Training

Sept 7 at 1300

PFM Command Leadership Forum

Sept 8 at 0900

Career Fair

Sept 8 at 1000

Stress Management

Sept 8 at 1000 (Japanese)

ESL/EFL

Sept 8 at 1300

Managing Deployment Separation

Sept 8 at 1300 (Virtual)

Make Tomodachi

Sept 8 at 1630 (Ikego)

See something you like? Sign up via email: ffscinfo@us.navy.mil



DEVELOPING YOUR SPENDING PLAN

IKEGO - NIKKO TOWER SEPT 7 at 0930

This course provides the background and tools to help learners develop financial goals and a written plan to achieve those goals.



To register please call 246-8052 or email FFSCinfo@us.navy.mil

MILITARY HEALTH SYSTEM MHS GENESIS

Information for MTF Patients

COMING TO THE PACIFIC OCTOBER 28, 2023

MHS GENESIS is the new Electronic Health Record for the Military Treatment Facilities (MTF). It integrates inpatient and outpatient electronic health records across the continuum of care from the point of service to the military treatment facility. MHS GENESIS is integral in the provision and coordination of safe, quality care. Military Treatment Facilities across the Pacific will transition to MHS GENESIS on October 28th, 2023.

How does this affect my access to health care?

As we transition to the new system, our staff will need to adjust to the new work flows, procedures, and processes. During this time, you can expect to experience:

- Longer appointment times
- Increased wait times at the pharmacy
- Reduced appointment availability
- Increased wait times for lab and radiology appointments and results

What can I do to prepare for the transition to MHS GENESIS?

As a crucial member of your care team, you can help with this transition by:

- Scheduling routine appointments prior to Sep
- Hand carrying copies of your active referrals
- Scheduling school & sports physicals prior to Sep
- Speaking with your provider about extending existing prescriptions to last throughout the transition period
- Completing standing lab work or imaging prior to Sep
- Avoiding missing scheduled appointments

How will MHS GENESIS improve my overall experience?

MHS GENESIS allows you to securely access your electronic health records 24/7 and exchange messages with your military health care team when and where it is convenient for you.

It provides more efficient management of chronic, complex, and time-sensitive health conditions, provides automated real-time clinic decision support for health care teams, and increases patient engagement capabilities that allow patients to communicate directly with providers.

How do I access the MHS GENESIS Patient Portal?

To access the MHS GENESIS Patient Portal, visit <https://myaccess.dmdc.osd.mil>. If you do not have a Common Access Card (CAC) or MyPay account, you will need to create a free DS Logon to access to Patient Portal. Follow the link to create an account, and once created, select "Upgrade to Premium Account" to view your health records. NOTE: Full Patient Portal access will not be available until October 28, 2023.

What can I do within the MHS GENESIS Patient Portal?

- Manage appointments
- Monitor health information and review your portal profile
- Review clinical notes, referrals, & lab & test results
- Request prescription renewals
- Exchange secure messages with your health care provider
- Look up high-quality, provider-approved health information related to health concerns, lab results, and medications



For more information, visit health.mil/MHSGENESIS



Learn Japanese

All classes are held in-person



Basics of Japanese

CRC Bldg 4/F: Every Tuesday, 1030 - 1130
IKEGO: Every Monday 1030 - 1130

This class talks about different topics and the participant will generally acquire listening, speaking, reading and writing skills.

Everyday Japanese

CRC Bldg 4/F: Every 2nd & 4th Mondays, 1000 - 1130

A basic Japanese language class for beginners, which caters to proper pronunciation and common phrases to help communicate with local nationals.

Active Japanese Language

CRC Bldg 4/F: Every 2nd & 4th Mondays, 1500 - 1700

Japanese language for beginners from grammar to easy Japanese conversation. The Sensei welcomes topic requests from her students when asked.

Daisuki

CRC Bldg 4/F: Every 2nd Tuesday, 1000 - 1130

This class talks about Japanese history (like pilgrimage during Edo Era) geography (Mt. Fuji, Japanese places) culture, tradition (snacks, festivals), everyday Japanese life, and origami making.

Make Tomodachi

Fleet Rec Bldg 3/F: Every 2nd & 4th Wednesdays, 1630 - 1715
IKEGO: 2nd & 4th Fridays, 1630 - 1715

Immersion-style Japanese class. Sensei will teach language and social skills to connect instantly with Japanese people outside the gate. There is an optional off base meet up with locals (usually at Coaska's Starbucks) to apply what is learned in the classroom.

To Register: email FFSCinfo@us.navy.mil or call DSN 243-3372



ikego Japanese Language Series

Tuesdays.1200-1300

Get to know Japan by learning how to speak, read and write in Japanese.

This is a twelve week course.

To register please call 246-8052 or email FFSCinfo@us.navy.mil



CAREER FAIR

MAIN BASE: SEPT 8TH 10AM-1PM
RED BRICK ENTRANCE TO CRC BLDG
RAIN VENUE: CHAPEL FELLOWSHIP

IKEGO: SEPT 22ND 10AM-12PM
NIKKO COMMUNITY CENTER

Come check out our upcoming career fair and explore the employment opportunities onboard CFAY.
Email FFSCinfo@us.navy.mil for a sample resume template.



Several HR specialists and two resume reviewers will be available.



Swim Lessons & Registration

Fall Lessons

Classes meet Monday and Wednesday or Tuesday and Thursday for four weeks. Each class is 30 minutes. Classes may be canceled or combined due to low enrollment. Registration will be conducted online only the first day of registration. Ensure that your MyFFR account is up to date.

Find out Friday

Beginning Aug 25 • 3:30 - 4 p.m. or 5:30 - 6 p.m.
Do you have questions about lessons and which level is appropriate? Are you trying to pass the swim test and are too tall to tread in the shallow end? Interested in being a lifeguard and need to take the prerequisite swim test? Just drop in, we will have instructors available to answer your questions and assist in the water.

Swim Registration

Session 1 Registration
Aug 21 - Sept 1
Sept 5 - '28
Sept 4

Open Registration
Session Dates
No Lessons

Session 2 Registration
Oct 2 - 5
Oct 10 - Nov 2
Oct 9

Open Registration
Session Dates
No Lessons

Session 3 Registration
Open Registration
Session Dates

Nov 6 - 9
Nov 13 - Dec 7

For more information or to schedule pre-course test, please contact the Aquatics Director iana.prickett.maf@us.navy.mil or call 241-2945.

Scan here to register at MyFFR

Visit us on the web!



YOUTH BOWLING LEAGUE



Yokosuka Bowling Center
Meeting • Sept. 5 • 3 p.m.
Bowling • Sept 12 - Nov. 14 • 3 p.m.

Compete with your friends! The league meeting is at 3 p.m. on Tuesday, September 5, and games will be held on Tuesdays starting September 12 through November 14. Coaching is available during league, and league bowlers are supervised from 3 - 5 p.m. The cost is \$60 per child, including shoe rental and three games per week! For more details, contact Yokosuka Bowling Center at 243-5158.



Oktoberfest 2023

September 16

Saturday • 4:30 - 9 p.m.

Officers' Club Bistro on the Patio

German themed dinner buffet along with live entertainment.

We will also have a full bar ready to shake, blend and serve!

\$24.95 (Adults) • \$12.50 (6 - 11 years of age)

For details call 243-5624/5002.

Enjoy this event responsibly! Don't drink & drive!
Event is subject to change without notice.

You are cordially invited to the

Ombudsman Appreciation Dinner

SEPT
FRIDAY 15 5:30 P.M.
2023

Officer's Club | Kosano Dining Room

BELLS ACROSS AMERICA FOR FALLEN SERVICE MEMBERS

SEPTEMBER 21, 2023

10 A.M.
Commander Fleet Activities Yokosuka
Kosano Park
Rain Location: C2 Auditorium

Tolling in Remembrance of Our Nation's Fallen

Join us as we pay tribute to the brave men and women who died in service to our nation and recognize the sacrifices of those who have been left behind.

For further information please contact, DSN: 243-3372 or FFSCinfo@us.navy.mil

HAPPY LABOR DAY

ATHLETICS		CLUB OPERATIONS		RECREATION	
Bowling Center	1 - 9 p.m.	Club Alliance Italian Gardens	5 - 9 p.m.	Auto Skills Center	10 a.m. - 2 p.m.
Fitness, Sports, DFS Office	CLOSED	Club Alliance Bayou Burgers	11 a.m. - 4 p.m.	Benny Decker Theater	1 & 5:30 p.m.
Fleet Gym & Hawk's Nest	8 a.m. - 4 p.m.	Club Alliance Delivery Service	5 - 9 p.m.	Fleet Theater	CLOSED
Ikego Fitness Center	24/7	Club Alliance Game Room	11 a.m. - 11 p.m.	Community Center - Ikego Office	CLOSED
Ikego Pool	CLOSED	Club Alliance Sharky's Killer Wings	4 - 11 p.m.	Community Center - Yokosuka	CLOSED
Green Beach Pool	CLOSED	Club Alliance Sharky's Roadhouse	CLOSED	Green Bay Marina	CLOSED
Purdy Fitness Center	CLOSED	Club Takemiya Bar & Lounge	CLOSED	Library - Yokosuka	CLOSED
Purdy Fitness Center Pool	CLOSED	Club Takemiya Dining	11 a.m. - 9 p.m.	Outdoor Recreation Center	10 a.m. - 2 p.m.
Single Sailor Liberty Center	2 - 10 p.m.	CPO Club Cove Bar	CLOSED	Paintball Office	By Reservation
CHILD & YOUTH PROGRAMS		CPO Club Dining Room	CLOSED	Plaque & T-Shirt Shop	CLOSED
CDH* *Call 080-4203-5629 for availability	Open for Mission Critical Only	CPO Cruise Inn	CLOSED	Tickets & Travel	10 a.m. - 2 p.m.
Duncan CDC	CLOSED	Food Court Better Burger	6 a.m. - 9 p.m.	Wood Hobby Shop	10 a.m. - 2 p.m.
Gridley CDC	CLOSED	Food Court Bombers	10 a.m. - 9 p.m.	FFSC • HOUSING	
Ikego CDC	CLOSED	Food Court Uptown Pizza	10 a.m. - 9 p.m.	Fleet & Family Services Center	CLOSED
Ikego SAC	CLOSED	Galley - Jewel of The East	B 7 - 8:30 a.m. L 10:30 a.m. - 12:30 p.m. D 4:30 - 6 p.m.	Main Housing Services Center	CLOSED
Green Street SAC	CLOSED	O'Club Courtyard	CLOSED	Ikego Housing Office	CLOSED
Third Avenue SAC	CLOSED	O'Club Bistro	CLOSED	Unaccompanied Housing (3333)	24/7
Ikego Teen	CLOSED	O'Club Chopsticks	CLOSED	MONDAY SEPT 4 HOLIDAY HOURS	
Yokosuka Teen Center	CLOSED	O'Club Kosano Dining Room	CLOSED		
Youth Sports Office	CLOSED	O'Club Kurofune Lounge	CLOSED		
		Chili's Grill & Bar	11 a.m. - 9 p.m.		
		Starbucks	7 a.m. - 9 p.m.		

BEYOND THE GATE



Vietnam Festa in Kanagawa 2023

Sept. 9 (Saturday) and 10 (Sunday)

10 a.m. to 6 p.m. | Nihon Odori, Kanagawa Prefectural Government Building, Zou-no-Hana Park, Zou-no-Hana Terrace (12-minute walk from JR Kannai Station, JK-10)

Vietnam Festa is a festival to deepen relationships between Kanagawa Prefecture and Vietnam. Come feel the culture and the charm of Vietnam. The program features a range of activities, including Vietnamese music, dances and cooking.

Tokyo Game Show 2023

Sept. 23 (Saturday) and 24 (Sunday)

10 a.m. to 6 p.m. | Makuhari Messe (10-minute walk from JR Keiyo Line Kaihin Makuhari Station, JE-14)

More than 300 exhibitors from almost 40 countries and regions gather for this annual gaming convention. Japanese game makers make up a significant number of those present, but many other international developers also join to exhibit the latest technology in areas ranging from artificial intelligence to smartphone gaming. You can try the games and VR headsets for yourself and purchase goods from the sales area. One-day ticket ¥2,300 yen (tax included) for each day.

Free admission for elementary school students and younger. https://eventregist.com/e/tgs23_advance

- Only available in advance online registration.
- Up to 10 tickets per person.
- All tickets are date-specific.
- No On-the-Day tickets will be sold at the venue.



Icha-icha Okinawan Festival

Sept. 2 (Saturday) and 3 (Sunday)

10 a.m. to 8 p.m. (Saturday), 10 a.m. to 6 p.m. (Sunday) | Yokosuka City Hall Park and Lidre Yokosuka (10-minute walk from Womble Gate)

Yokosuka will be filled with the delicious smells of the food of Japan's southern islands! Okinawan pop and rock bands as well as eisa dancers perform for the crowd. The event is free but bring yen for food vendors.



Yokosuka Reggae Bash

Sept. 17 (Sunday)

10 a.m. to 7 p.m. | Mikasa Park (5-minute walk from Womble Gate)

Yokosuka's very first reggae festival will be held at Mikasa Park. There will be stage performances by various reggae artists and dancers, and food and shopping booths.

Yokosuka Seaside Marathon

Nov. 19 (Sunday)

8:30 a.m. | Mikasa Park (5-minute walk from Womble Gate)

Yokosuka Seaside Marathon is accepting applications for entry until Sept. 13. For more information, <http://yokosuka-seaside.jp/>. For entry, <https://runnet.jp/entry/runtes/user/pc/competitionDetailAction.do?racelid=330513&div=1>

NEWS AND NOTICES

LABOR DAY OPERATION (GATE) HOURS

Carney (Main) Gate

- Vehicles and pedestrians: 24 hours
- Boardwalk Gate - Pedestrian only: 6 a.m. to 9 p.m.

- **No high traffic pattern in-bound**

Womble Gate

- Outbound pedestrian daily: 24 hours
- Inbound pedestrian daily: 5 a.m. to 6 p.m.
- Inbound vehicles/buses/trucks daily: 5 a.m. to 6 p.m.

- **No high traffic pattern in-bound or outbound**

Verny Pedestrian Gate

- Exit only: 24 hours

Ikego Main Gate

- Vehicles and pedestrians: 24 hours.

Jimmuji Gate

- Pedestrian only: 5 a.m. to 1 a.m.

Visitor Control Center

- 7 a.m. to 8 p.m.

POST OFFICES CLOSURE

The Yokosuka and Ikego Post Offices will be closed Monday, Sept 4 in observance of Labor Day. Building G-59 and Ikego Pitney Bowes lockers remain available 24/7. All services will resume on Sept. 5. If you have any questions, call 243-6711, or email: yokosukapostoffice@fe.navy.mil.

DRIVER'S LICENSE OFFICE CLOSURE

License office will be closed Sept. 4 due to Federal Holiday. For questions, call 243-9089/6721/5647, or email: license@us.navy.mil.

MYFFR ONLINE REGISTRATION SITE HAS MOVED

To register for upcoming Tickets & Travel tours, Outdoor Recreation tours, Community Center classes, Fitness events and to buy movie tickets, please visit new MyFFR site at: <https://myffr.navyaims.com/navyfareast/wbwc/navyfareast.wsc/splash.html?interfaceParameter=WebTracJapan&ccode=Navy-Yokosuka>.

IKEGO ELEMENTARY NO-DROP OFF ZONE

Vehicles are not allowed to enter the Ikego Elementary School or surrounding area to drop-off or pick-up children during the

following times:

- Monday, Wednesday, Thursday, and Friday: 7:30 to 8 a.m. and 2 to 2:30 p.m.
 - Tuesday: 7:30 to 8 a.m. and 1 to 1:30 p.m.
- The housing area located along Yasakayato street and near the entrance of the school is designated as a **"No School Drop Off Zone"**. Parents and guardians are authorized to park in any open unmarked parking spots in the parking garages, or side streets and walk their children to school.

YOKOSUKA FRIENDSHIP DAY VENDOR MEETINGS

Thinking about participating as a vendor in the upcoming Friendship Day open base event in October? Come out to our Vendor Meetings in the MWR Admin Building's room 224 and learn what's needed to become an approved vendor for this event.

Meeting dates:

- Sept. 5 at 11 a.m. and Sept. 19 at 1 p.m.

Email: MWR_Yokosuka_Special_Events@us.navy.mil.

IKEGO DETACHMENT LEGAL ASSISTANCE SERVICES

JAG services have been moved to bi-weekly.

When: Every other Wednesday

Where: Ikego Command Liaison Office, first floor, building #831 (door to the left of Security)

Walk-in notary services offered 8 a.m. to 12 p.m.

- Please bring two forms of ID
- Special powers of attorney may be created at: <https://www.jag.navy.mil/legal services/SPOA.htm>

Civil Law Attorney Services offered by appointment, 1 to 4:30 p.m.

- Forms for legal assistance appointments: <https://www.jag.navy.mil/legal services/rloso/rloso japan.htm>
- Submit completed forms to: YokosukaLegalAssistance@us.navy.mil.

SPORTS PHYSICALS PEDIATRICS CLINIC

Every Friday beginning on Aug. 4 and running through Sept. 15, the Pediatrics Clinic will have 10 appointments set aside for children's

sports physicals. Due to scheduled training requirements, there will be no sports physical appointments on Sept. 8. Parents must complete the sports physical form prior to the appointment. Forms are available at USNMRTC Clinics, school nurses' office or [https://yokosuka.tricare.mil/Portals/133/PPE-History-Form-\(English\)-rev.pdf](https://yokosuka.tricare.mil/Portals/133/PPE-History-Form-(English)-rev.pdf). To schedule one of these appointments, please call 243-5505 or 243-5352.

- Non-enrolled patients may schedule these appointments.
- No other health conditions will be discussed at these visits.



VOLUNTEER NOW FOR THE AMERICAN RED CROSS

- Volunteer Appreciation Lead (Help us show love to our volunteers)
- Preparedness Training (Youth K-5th Grade)
- Red Cross Message Management (Support service members who have initiated a Red Cross Emergency Message)
- Hospital Volunteers (Scheduling appointments/admin; Nursing or other medical volunteering)
- Youth Engagement (Pillowcase Project, International Humanitarian Law)
- Social and Print Media (FaceBook, Twitter, Flyers, Posters)
- How to volunteer:
 1. Use a desktop or laptop computer.
 2. Search and go to Red Cross Volunteer Connection.
 3. Use the Yokosuka FPO zip code 96349.
 4. Complete the online training.
 5. If you have any problems, email: yokosuka@redcross.org, or call 243-7490.

CONSTRUCTION AND CLOSURES

McCormick Street and Leahy Street: Full road closure for underground utility works until Feb. 28, 2025.

Sampson Avenue: Sidewalk will be closed partially until Nov. 30.

Vandegrift Lane: Full road closure until October 2025.

Commander Fleet Activities Yokosuka

@CFAY_Japan

yokosukareport@gmail.com

Commanding Officer: Capt. Les Sobol
Command Master Chief: BMCM Jeffrey D. Brooks

Public Affairs Officer: Randall Baucom
Editor: Justin M. Keller
Layout: Hideo Kaihatsu

Receive My CFAY Weekly by email! Subscribe at yokosukareport@gmail.com, subject line: **Subscribe**