



**2021**  
**NATIVE AMERICAN**  
*Consultation*

DAY  
ONE

# Government-to-Government Consultation

6  
OCTOBER

TIME	ACTIVITY TOPIC OF DISCUSSION	LOCATION	PRESENTER
8:00	Check In / Light Breakfast Meet & Greet	Fort Eustis Club	_____
8:30	Welcome Remarks / Opening Prayer Gift Presentation	Fort Eustis Club	Col Beaulieu
8:55	Agenda Outline	Fort Eustis Club	Dr. McDaid
9:00	Joint Base Langley - Eustis Overview	Fort Eustis Club	Col Thigpen
9:30	Break	_____	_____
9:45	Tribal Introductions	Fort Eustis Club	Open Forum
10:45	JBLE Installation <b>fe &amp; lafb</b> Development Plan	Fort Eustis Club	JBLE Planning & Programming
11:15	JBLE Installation <b>fe &amp; lafb</b> Installation Restoration	Fort Eustis Club	Mr. Tice
11:45	Cultural Resources Overview	Fort Eustis Club	Dr. McDaid
12:00	Lunch	Fort Eustis Club	_____
1:00	Effect of Erosion on Cultural Resources	_____	_____
1:30	Tour of Fort Eustis	_____	_____
4:00	Return to Fort Eustis Club	_____	_____
4:30	Q & A	Fort Eustis Club	Open Forum
5:00	Adjourn	_____	_____





**DAY  
ONE**

## Government-to-Government Consultation

**7  
OCTOBER**

TIME	ACTIVITY TOPIC OF DISCUSSION	LOCATION	PRESENTER
8:30	Departure to Langley AFB	Fort Eustis Club	_____
9:00	Langley AFB Tour	_____	Col Heritage
10:00	Return to Fort Eustis	_____	_____
11:00	Lunch	Fort Eustis Club	_____
12:00	Procedures for Communication	Fort Eustis Club	Open Forum
1:00	Questions, Concerns, & Additional Comments	_____	_____
1:45	Closing Remarks	Fort Eustis Club	Open Forum
2:00	Adjourn	_____	_____



# TABLE OF CONTENTS

LANGLEY AIR FORCE BASE HISTORY	1
LANGLEY & EUSTIS CAPABILITIES	2 - 3
DEMOGRAPHIC & ECONOMIC IMPACT	4 - 5
JBLE DEVELOPMENT PLAN	6 - 11
LANGLEY AIR FORCE BASE CULTURAL SITES	12
FORT EUSTIS CULTURAL SITE	13
CULTURAL RESOURCE MANAGEMENT	14
OUR APPROACH TO CONSULTATION	15
LANGLEY AFB MAJOR UNITS	16 - 17
FORT EUSTIS MAJOR UNITS	18 - 20
JBLE TRIBAL TEAM CONTACT LIST	21

# 633 Air Base Wing | ABW

Joint Base Langley-Eustis is one of 12 DoD Joint bases. Established in 2010, the 633 ABW is the host mission support wing, serving both Army and Air Force units.

## ORGANIZATION :

The ABW includes the 633d Medical Group and two Mission Support Groups (MSG): the 633d MSG provides installation support on Langley Air Force Base and the 733d MSG provides support to Fort Eustis.

## MISSION :

Provide premier installation support, mission partner / wing readiness, and a power projection platform enabling warfighters, to deliver agile combat support, global sustainment operations, and worldwide medical humanitarian support through the Global Response Force.

## DEMOGRAPHICS :

Supports 15,000 Army, Air Force, Navy, Marine Corps, US Coast Guard personnel and 5,800 DoD Civilians across the Joint Base, along with 160,000+ military retirees in the Hampton Roads area.



# JBLE Langley Capabilities

## HEADQUARTERS AIR COMBAT COMMAND |

Organizes, trains, and equips combat ready Airmen to control and exploit the Air and Space

## FIGHTER WING |

Delivers F-22 Power worldwide on short notice

## AIR BASE WING |

Joint Base Command for Joint Base Langley-Eustis

## INTELLIGENCE, SURVEILLANCE & RECONNAISSANCE (ISR) |

Collects information related to the enemy's strength, movements and activity; provides targeting prouction and full-spectrum tactical analysis.



# JBLE Eustis Capabilities

## HEADQUARTERS TRAINING & DOCTRINE COMMAND (TRADOC) |

Recruits, Trains, and educates the army.

## MILITARY OCCUPATIONAL SKILL (MOS) TRAINING |

Produces technically proficient, combat ready Soldiers in the following fields: Aviation Rotary Wing (Helicopter) Maintenance, Watercraft, Railway operations, and Cargo Handling.

## DESIGNING TOMORROW'S ARMY |

Futures and Concepts Center (FCC) develops future concepts, designs requirements, and integrates modernization strategies necessary to field the increasingly lethal army of tomorrow

## AVIATION INNOVATION |

Provides research and development for standard and non-standard rotary wing platforms.

## EXPEDITIONARY INTERMODAL TRANSPORTATION |

Provides the Army's only expeditionary watercraft unit and Rapid Port Opening Elements (RPOEs) that deploy the force and establish airport and seaport capabilities.

## ENABLING THE JOINT FLIGHT |

Joint Task Force Civil Support (CBRNE), James River Reserve Fleet, U.S. Coast Guard Reserve Center



# Demographic & Economic IMPACT

MILITARY PERSONNEL	JOBS		COST	
	direct	indirect	direct	indirect
ACTIVE DUTY PERSONNEL	13,470	6,763	\$825,406	\$838,613
AIR NATIONAL GUARD	1,144	128	\$15,680	\$15,931
TOTALS	14,614	14,614	\$841,086	\$854,543

CIVILIAN PERSONNEL	JOBS		COST	
	direct	indirect	direct	indirect
GENERAL WAGE SCHEDULE	4,323	2,526	\$308,257	\$313,189
FEDERAL WAGE BOARD	198	94	\$11,474	\$11,657
OTHER CIVILIANS	624	433	\$52,790	\$53,634
APPROPRIATED FUND NAF	586	255	\$31,120	\$31,618
APPROPRIATED FUND AAFES	317	33	\$4,012	\$4,076
APPROPRIATED FUND DeCA	179	50	\$6,159	\$6,258
TOTALS	6,227	3,391	\$413,811	\$420,432

**TOTAL ECONOMIC IMPACT : \$3.392 BILLION**  
**TOTAL JOBS CREATED : 36,859**  
**VALUE OF INDIRECT JOBS CREATED : \$760M**

EXPENDITURES	JOBS	COST	
		direct	indirect
CONSTRUCTION	2,993	\$256,392	\$191,704
UTILITIES/SERVICES/ LOCAL	2,131	\$195,422	\$156,218
NON-LOCAL GOOD/ SERVICES	178	\$9,741	\$7,760
LOCAL TRAVEL SPENDING	434	\$25,880	\$18,747
TOTALS	5,736	\$487,436	\$374,429

## JBLE's FY20 Economic Impact : \$3.392 BILLION

ECONOMIC IMPACT	VALUE	
PAYROLL	\$1,254,897	
INDIRECT OUTPUT FROM PAYROLL	\$1,274,975	
EXPENDITURES	\$487,436	
INDIRECT OUTPUT FROM EXPENDITURES	\$374,429	
ESTIMATED IMPACT TO ECONOMIC	\$3,391,737	
JOB CREATION	JOBS	VALUE
MILITARY AND CIVILIANS	20,841	--
INDIRECT JOBS FROM HOUSEHOLD SPENDING	10,282	\$488,056
INDIRECT JOBS FROM EXPENDITURES	5,736	\$272,271
ESTIMATED IMPACT TO JOB CREATION	36,859	\$760,327



SHORT-RANGE DEVELOPMENT PLAN (1-5 YEARS) – JBLE-LANGLEY

The short-range plan consists primarily of projects being implemented by JBLE-Langley and projects that can be implemented with limited MILCON or SRM dollars. Most of the JBLE-Langley projects are related to facility and infrastructure repairs.

Map ID	Project #	Description	Planning District	Alignment
1	07-3013	Fuel Systems Maintenance Dock	4	1
2	MUHJ 13-3000	363 JSRW HQ	7	2
3	MUHJ 14-4077	Repair Runway/Txwy Circuit, Lights and PAPI System, F. 2380	4, 5	1
4	MUHJ 14-4114	Repair HVAC, Fire Suppression and Utilities, Alert Hangar F1362	6	3
5	MUHJ 03-4247	Repair East Apron	4	1
6	MUHJ 08-4027P	Repair Asphalt on Taxiway, Foxrot, F. 6005	6	1
7	MUHJ 09-4149	Maintain Runway 08 and 26 Clear Zone Drainage, F. 7025	6	1
8	MUHJ 14-4097	Repair Worley Rd on Tabo Creek Bridge, F. 1045	7	1
9	MUHJ 11-7025A	Repair F. 1004 & F. 1007 for EOD Ops and Demo	7	1
10	MUHJ 08-3000	Fuel Pier & Ground Vehicle Refueling Facility	4	1
11	MUHJ 14-4152	Repair Sewer Force Mains Ph1	Multiple	1
12	MUHJ 15-4132	Repair West & South Overhead Feeder and Place Underground, F. 2100	3	1
13	MUHJ 12-4033	Repair Backflow Prevention Devices	Multiple	1
14	MUHJ 12-4035	Repair by Replacement 20" Water Main, F. 2025	Multiple	1
15	MUHJ 17-0028	Base Traffic Study	Basewide	1
16	MUHJ 15-3000	Flightline Security Fence	Multiple	3





# MEDIUM-RANGE DEVELOPMENT PLAN (6-10 YEARS) – JBLE-LANGLEY

The medium-range plan captures all projects identified by JBLE to date but not currently funded. Some of these projects will be identified as long-term projects in subsequent IDP submittals.

Map ID	Project #	Description	Planning District	Alignment
1	04-3009	Land Purchase, West Clear Zone	N/A	3
2	08-3001	Replace Maintenance Hangar (F. 753)	4	4
3	05-3005	Consolidated Comm Operations Facility	TBD	2, 4
4	05-3000	Security Forces Operations Facility	TBD	2, 4
5	03-3003	Indoor Small Arms Range and Tower	TBD	2
6	06-3008	Airmen and Family Readiness Center	3	3
7	01-0311	Add/Alter Bethel Manor Chapel Facility	9	3
8	09-3003	Vehicle Maintenance Complex	TBD	2, 4
9	09-3071	Air Base Wing Headquarters	1	2
10	TBD	192 FW Facilities	TBD	
11	TBD	Solid Waste Station near Weyland Rd and LTA Bypass	6	1



LONG-RANGE DEVELOPMENT PLAN (11+ YEARS) – JBLE-LANGLEY

Map ID	Project #	Description	Planning District	Alignment
1	14-3001	Consolidated Maintenance and Training Hangars (f. 750/751)	4	2, 4
Long Range				

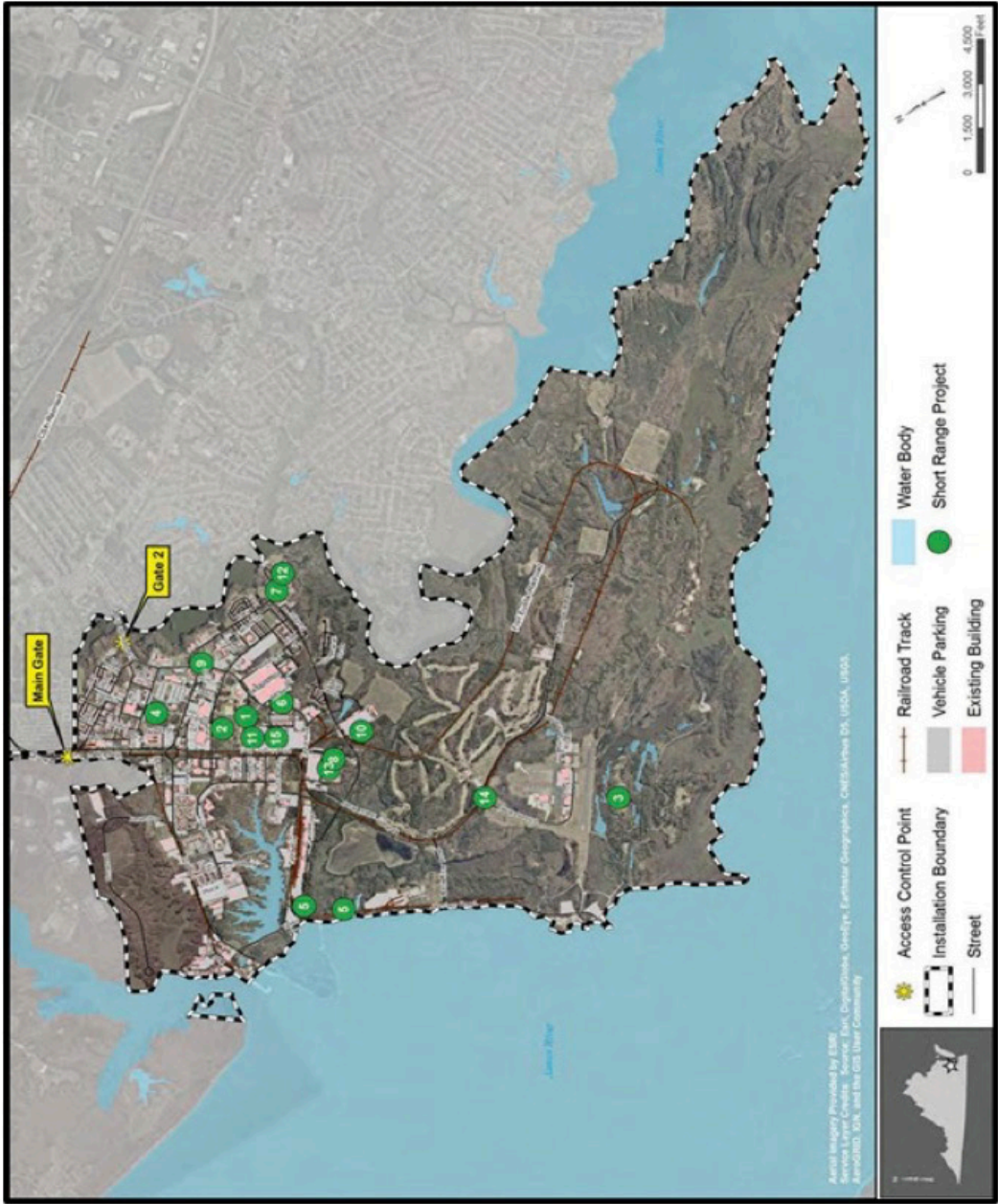




# SHORT-RANGE DEVELOPMENT PLAN (1-5 YEARS) – JBLE-EUSTIS

The short-range plan consists primarily of projects being implemented by JBLE-Langley and projects that can be implemented with limited MILCON or SRM dollars. JBLE-Eustis has two projects in the AIT Campus and one at Felker Army Airfield.

Map ID	Project #	Description	Planning District	Alignment
1	77779	Aviation Training Facility (128th AVN BDE)	2	2.5
2	73391	Adv Individual Trainee Barracks PH IV	2	2.5
3	TBD	Aviation Complex	8	2.5
4	HERT 16-5004	MEDCOM Renovation/Relocation and Demo	1	3
5	HERT 11-4009	Repair Railroad Bridges	4	1
6	HERT 15-6185	Repair Tech Training Classroom F.2730	2	3
7	HERT 16-3058	Renovate F.2114 for SJA/ EEO/CSF2 and Demo F.2733	6	3
8	HERT 14-7002	Renovate and Add to F.1413 for SJA and Demo F.2732	4	3
9	HERT 14-4026	Repair HVAC and Fire Protection System F.925	6	3
10	HERT 13-7146	Repair F.3308 ATSC Trng Support for Server Consolidation	4	3
11	HERT 13-7156	Repair HVAC and Fire Protection System for F.2702	2	3
12	HERT 15-3004	Repair/Renovate Club F.2123	6	3
13	HERT 12-4169	Repair Life Safety for F.1411	4	4
14	HERT 13-9013	Repair Flight Line POL (DUA)	8	3
15	HERT 12-9012	Repair THP POL (DUA)	2	3



MEDIUM-RANGE DEVELOPMENT PLAN (6-10 YEARS) – JBLE-EUSTIS

The medium-range plan captures all projects identified by JBLE to date but not currently funded. Some of these projects will be identified as long-term projects in subsequent IDP submittal.

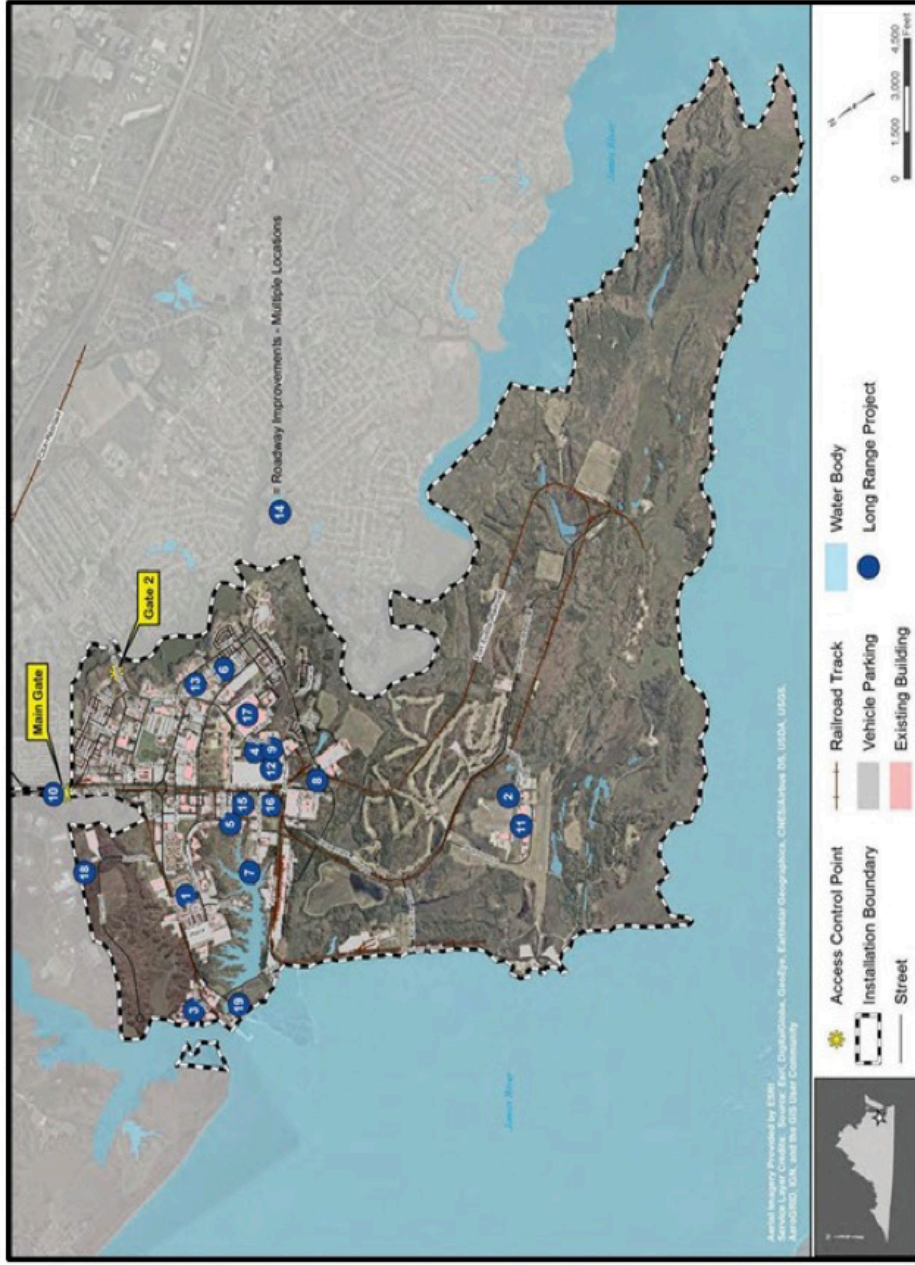
Map ID	Project #	Description	Planning District	Alignment
1	57303	Replace F. 806	3	2, 4
2	TBD	TMC for AIT Campus	2	2
3	TBD	Consolidated MEDCOM Complex	6	3, 4
4	TBD	Construct TAPO Facility	4	2
5	HERT 16-5002	Repair Avn Maintenance Timg F. 275610	2	3
6	TBD	Demolish Mult. Facilities	Multiple	2, 3, 4, 5
7	TBD	Dredge Skiffe's Creek	3	4
8	HERT 16-5001	Repair Avn Maintenance Timg F. 27501	2	3
9	TBD	TBD 3rd Port Upgrade (New Vessel Support) 7th TB (X)	3	1



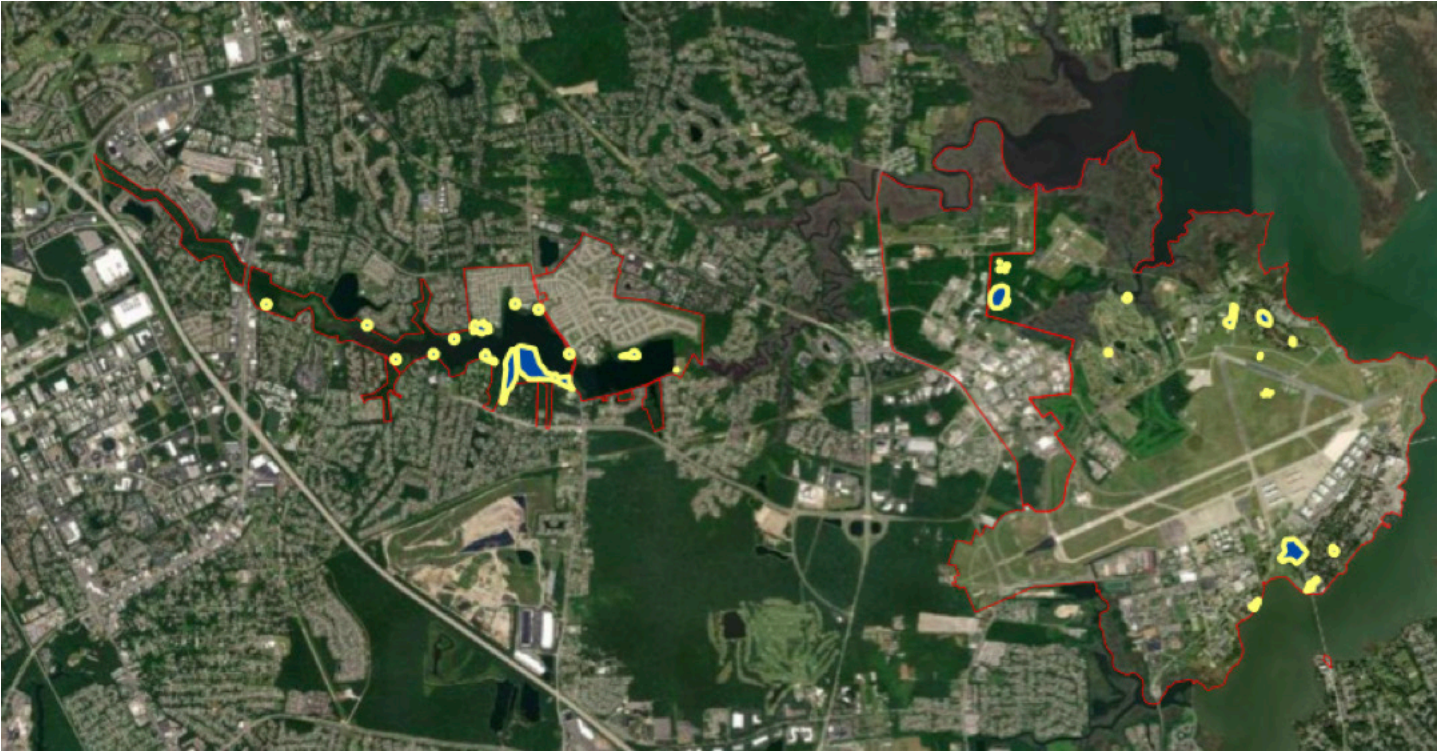


## LONG-RANGE DEVELOPMENT PLAN (11+ YEARS) – JBLE-EUSTIS

Map ID	Project #	Description	Planning District	Alignment
1	75504	Construct Brigade/Battalion (2) Headquarters (7th)	3	2
2	58837	Aircraft RDT&E (AATD)	8	2
3	75485	Maritime Training Facility	3	2
4	71529	Aviation Training Facility (128th AVN BDE)	2	2
5	85815	Construct Information Systems Facility	3	2
6	59582	ATSC Phase II	6	2
7	76279	Training Aids Center	3	2
8	86598	MWD Kennel	4	2
9	87554	Aviation Training Facility (128th AVN BDE)	2	2
10	HERT 11-7021	Access Control Point (Main Gate)	1	1, 3
11	HERT 14-7026	Flight Control Tower	8	2
12	HERT 14-7025	Chapel Center	1	3
13	HERT 14-7024	School/Age Center	6	3
14	HERT 12-6268	Road Improvements, Jefferson/ Lee/Madison	N/A	1
15	HERT 12-7359	Physical Fitness Center	4	3
16	HERT 12-7358	Construct Sports Complex	4	3
17	TBD	Systematic Continued Renovation of F. 275XX-F. 276XX	2	3
18	TBD	Construct New Access Control Point (Gate 3)	5	3, 6



# Cultural Sites at JBLE Langley



Total Archaeology Sites Recorded	31
Number of Eligible or Listed Sites	7
Number of Non-Eligible Sites	23
Number of Unevaluated Sites	1
Number of Sites With Native Material	20
Percent of Base Surveyed (3,152 Acres)	36%

SOME PORTIONS OF BASE INACCESSIBLE



# Cultural Sites at JBLE Eustis



Total Archaeology Sites Recorded	234
Number of Eligible or Listed Sites	26
Number of Non-Eligible Sites	24
Number of Unevaluated Sites	183
Number of Sites With Native Material	115
Percent of Base Surveyed (3,152 Acres)	77%

SOME PORTIONS OF BASE INACCESSIBLE



## OUR APPROACH TO Cultural Resources Management (CRM)

### AVOIDANCE IS PREFERRED OPTION

- The regulations make that the quickest and least expensive approach in most cases

### CRM PROGRAM IS INVOLVED EARLY IN THE PLANNING PROCESS

- The presence of cultural sites is known by the planners
- CRM program integrated into NEPA process
- Air Force requires Section 106 complete before EA or EIS is final

### ONGOING EVALUATION PROGRAM AT JBLE-EUSTIS

- 4 - 6 sites per year are evaluated for National Register of Historic Places eligibility



## OUR APPROACH TO Consultation



- Ensure that the relationship between the installation and the several Tribes is Government-to-Government
  - Focus on relationships between the installation staff and staff from Tribes
    - Focusing on staff connections will ensure a level of continuity and “institutional memory” can develop.
    - It will make working with, consulting with, and taking Tribal concerns into account part of the everyday actions of the installation
- Not an annual “special occasion”



# LANGLEY AFB

## Major Units

**AIR COMBAT COMMAND** | Headquartered at Joint Base Langley-Eustis, Virginia, is one of ten major commands in the United States Air Force. As a result of its lineal consolidation with Tactical Air Command in September 2016, ACC has performed a myriad of missions during its 72-year history ranging from counter-air, air interdiction and close air support to manned and unmanned intelligence, surveillance and reconnaissance, air battle management, and offensive/defensive cyber operations. For more than seven decades, ACC has served as the primary provider of air combat forces to America's warfighting commanders.

**633RD AIR BASE WING** | Comprised of three groups that provide installation support to more than 9,000 military and civilian personnel including Headquarters Air Combat Command and three operational wings. The Wing provides mission-ready expeditionary Airmen to combatant commanders in support of joint and combined operations worldwide. The activation of the 633 ABW as the new host unit for Langley Air Force Base, Va., Jan. 7, 2010, was the first step toward Joint Base Langley-Eustis.

**1ST FIGHTER WING** | Composed of the 1st Operations Group and 1st Maintenance Group, and responsible for delivering F-22 Air Power worldwide on short notice to support Combatant Commander taskings. The oldest wing in the Air Force, the 1st Fighter Wing continues its tradition of Air Dominance which began in WWI and continues with current 5th Generation operations across the world.

**192ND FIGHTER WING MISSION** | Provide a fully trained organization of volunteer Airmen dedicated to protect and defend the vital interests of the nation, state and community. The wing provides combat-ready personnel and equipment to support United States' national security objectives in a federal capacity; protect life and property and preserve peace, order and safety in a state capacity; and participate in local, state and national programs that add value to the U.S. in a community capacity.

**480TH INTELLIGENCE, SURVEILLANCE & RECONNAISSANCE WING** | Operates and maintains the Air Force Distributed Common Ground System, or DCGS, also known as the "Sentinel" weapon system, conducting imagery, cryptologic, and measurement and signatures intelligence activities.

**363<sup>RD</sup> INTELLIGENCE, SURVEILLANCE & RECONNAISSANCE WING HEADQUARTERS** | 363<sup>rd</sup> ISR Wing, Joint Base Langley-Eustis, Virginia, is the only wing of its kind across the Air Force. The wing conducts lethal, resilient and ready operations across four key mission areas: analysis of air, space and cyber operations; full-spectrum targeting; special operations ISR; and ISR testing, tactics development and advanced training. The wing's dynamically adaptive, problem-centric and audaciously innovative approach provides lethal capabilities and unmatched value for our nation.

**497<sup>TH</sup> INTELLIGENCE, SURVEILLANCE & RECONNAISSANCE GROUP** The 497 ISRG delivers real-time high confidence intelligence, surveillance and reconnaissance products and services to Joint and Coalition forces and other designated government agencies.

**AIR FORCE COMMAND & CONTROL INTEGRATION CENTER** | The AFC2IC is responsible for innovating, designing, developing, integrating, and sustaining command and control (C2) capabilities.

**735<sup>TH</sup> SUPPLY CHAIN OPERATIONS GROUP** | The 736 SCOG delivers premier enterprise logistics support to enable warfighter dominance and develop innovative Airmen to provide agile logistics solutions to win tomorrow's fight.

**AIR FORCE TARGETING CENTER** | The Targeting Center provides targeting and geospatial products and services, expertise and advocacy to Air Force and Joint Warfighters. AFTC supports Air Operations Centers (AOCs) and Theater Air Control System (TACS).

**158<sup>TH</sup> FIGHTER WING, DET. 1** | The mission of the 158 FW is to provide a relatively low-cost, high-performance weapon system for the United States and allied nations. Federal government: To provide the United States Air Force with combat ready personnel and equipment for utilization during times of war or national emergency. State government: To provide assistance to the State of Vermont for use during local and statewide disasters or emergencies, to protect life, property, and preserve peace, and public safety. If activated to federal service, the Wing is gained by the United States Air Force Air Combat Command.

**AIR LAND & SEA APPLICATIONS CENTER** | ALSA is a multi-service organization established by the doctrine centers to develop tactical-level solutions of multi- Service interoperability issues consistent with Joint and Service doctrine.

**83<sup>D</sup> NETWORK OPERATIONS SQUADRON** | The 83<sup>rd</sup> Network Operations Squadron, provides 24/7 cyberspace operations in support of over 900,000 systems and 860,000 users at over 233 sites in 180 countries. The 83<sup>rd</sup> NOS provides centralized cyberspace defense and mission assurance utilizing the Cyberspace Security and Control System weapon system to perform defensive Department of Defense information network operations across the Air Force enterprise network.

# FORT EUSTIS

## Major Units

**TRAINING & DOCTRINE COMMAND |** TRADOC recruits, trains and educates the Army. TRADOC executes its mission through five subordinate commands and centers: Center of Military History (Fort Leavenworth), Combined Arms Center (Fort Leavenworth), Center Initial Military Training (Fort Eustis), Recruiting Command (Fort Knox) and Cadet Command (Fort Knox). TRADOC also oversees 32 Army schools organized under eight Centers of Excellence, each focused on a separate area of expertise within the Army (such as Maneuver and Signal). These centers train over 500,000 Soldiers and service members each year.

**FUTURES & CONCEPTS CENTER |** FCC develops concepts, determines requirements, conducts experimentation, and begins integration of the future force to ensure the Army wins in 2035 and beyond.

**U.S. ARMY CENTER FOR INITIAL MILITARY TRAINING |** Core Function Lead for the Training & Doctrine Command (TRADOC) for all initial entry training. What this does is provide a process that aligns the development of competencies (knowledge, skills, abilities, attributes) and behaviors in civilian volunteers in order for them to become Soldiers who are physically ready, grounded in Army Values, and competent in their skills so they are able to contribute as leaders or members of a team upon arrival at their first unit of assignment. Initial Military Training (IMT) includes developing baseline proficiency on warrior tasks and battle drills and critical skills associated with their military occupational specialty (MOS) or officer basic branch.

**JOINT TASK FORCE CIVIL SUPPORT |** Anticipates, plans and prepares for chemical, biological, radiological, and nuclear (CBRN) response operations as well as all-hazards defense support of civil authorities operations. When directed, JTF-CS deploys within 24 hours of notification to command and control DOD forces in support of civil authority response operations in order to save lives, prevent further injury, and provide temporary critical support to enable community recovery. JTF-CS is the nation's only standing CBRN joint task force. It comprises active and reserve component service members from the Army, Navy, Air Force and Marines.

### **INSTALLATION MANAGEMENT COMMAND TRAINING**

**DIRECTORATE (ID-T) |** IMCOM integrates and delivers base support to enable readiness for a globally responsive Army. IMCOM executes its stateside mission through three functionally aligned and co-located Installation Management Command Directorates. ID-T is collocated with TRADOC.

**7TH TRANSPORTATION BRIGADE (EXPEDITIONARY)** | Provides mission command of assigned and attached port, terminal and watercraft units conducting expeditionary intermodal operations in support of unified land operations. When directed, 7TB(X) executes rapid expeditionary Theater Opening, Maneuver and Mobility Support, Terminal Operations, and RSOM while keeping the theater base small and acting as the austere connector from the Strategic or Sea-Base to the Supported Force.


**597TH TRANSPORTATION BRIGADE** | The 597TB is the Military Surface Deployment and Distribution Command's global surface transportation expert focused on U.S. Northern Command areas of responsibility. The Brigade has three subordinate battalions: the 833rd Transportation Battalion located at Joint Base Langley-Eustis; the 841st Transportation Battalion located in Charleston, S.C.; and the 842nd Transportation Battalion located in Beaumont, Texas.

**128TH AVIATION BRIGADE** | 128th Aviation trains all rotary-wing aviation mechanics for the U.S. Army. The Brigade produces disciplined, physically fit, technically proficient aviation maintenance Soldiers and leaders who embody the Army Values and embrace the Army as a profession, contributing to the combat readiness of the Army, its allies, and other services.

**93D SIGNAL BRIGADE** | Commands, controls, and defends the Eastern region of the LandWarNet (LWN) in CONUS and supports operating and generating forces engaged in full spectrum operations enhancing battle command through the transparent delivery of LWN capabilities.

**AVIATION DEVELOPMENT DIRECTORATE-EUSTIS** | Develops, matures, demonstrates and transitions critical technologies and products through technology programs and customer support that modernize, maintain and sustain Army Aviation as the dominant land force aviation component in the world.

**JAMES RIVER RESERVE FLEET** | The James River Reserve Fleet (JRRF) is an anchorage of the National Defense Reserve Fleet (NDRF) located on the James River at Fort Eustis, Virginia. It is the oldest of the original eight NDRF fleet sites and is currently one of three that is still in operation (Beaumont, Texas and the San Francisco Bay are the other locations). JRRF currently hosts non-retention, retention, and reimbursable custody vessels. Non-retention vessels are those that the MARAD has deemed to no longer be militarily useful. Retention vessels are maintained for logistics support, training use, or long-term activation. Reimbursable custody vessels are non-NDRF government vessels (such as those owned by the U.S. Army, Navy, Coast Guard, or the National Oceanic and Atmospheric Administration) that are stored at each fleet site in exchange for a maintenance fee.



**JOINT DEPLOYMENT TRAINING CENTER** | JDTC is DoD's sole provider of functional training on GCCS-], providing training for more than 5,000 students from the CCMDs, Services and Agencies each year. JDTC divides training into three programs of study: Joint Deployment [with emphasis in JOPES and the joint deployment process], Situational Awareness [with emphasis on GCCS-] Common Operational Picture (GCCS-] COP) and GCCS-] Integrated Imagery and Intelligence (GCCS-] I3)], and Global Force Management [with emphasis on the Joint Capabilities Requirements Manager (JCRM) and the GFM process].

**ARMY TRAINING SUPPORT CENTER** | A dynamic organization with a vast and varied mission. It is responsible for managing the Army Training Support Enterprise (TSE), providing oversight for many programs that enable the development, delivery and sustainment of training and education (T&E) support capabilities worldwide.

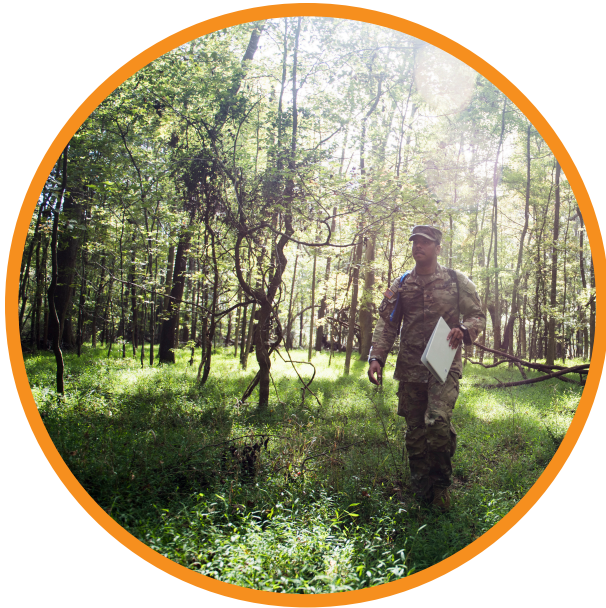
**MCDONALD ARMY HEALTH CENTER** | Committed to enhancing Soldier readiness and providing patient-centered, safe, high-quality, collaborative healthcare to those we serve in the Tidewater Community.

**U.S. ARMY SUPPORT ACTIVITY** | Provides Army mission-related and warfighting services, not otherwise managed by Joint Base Langley-Eustis or other installation service providers, enabling unit readiness and mission accomplishment and enhancing the well-being of our nation's Service Members, Civilians and Family Members. Click on each agency below for more information about services, hours of operations, locations and more.

**MARITIME & INTERMODAL TRAINING DEPARTMENT** | Unique throughout the entire spectrum of Army training entities, the Maritime and Intermodal Training Department (M&ITD) is the one stop training site for all things Watercraft, Cargo Handling, and Rail Operations. Consisting of two divisions, M&ITD provides Initial Military (IMT) and Sustainment training to transportation Soldiers from both the Active Duty and Reserve Components, as well as civilians and members of other services utilizing a variety of state-of-the-art simulators, trainers, and Subject Matter Experts. With every graduate we build the future of intermodal transportation.







## JBLE TRIBAL TEAM Contact List

**JOINT BASE INSTALLATION COMMANDER | 633D AIR BASE WING COMMANDER**  
Colonel Gregory S. Beaulieu

**633D AIR BASE WING VICE COMMANDER**  
Colonel Harry Hung

**733D MISSION SUPPORT GROUP COMMANDER**  
Colonel Chesley D. Thigpen, Jr.

**633D MISSION SUPPORT GROUP COMMANDER**  
Colonel Allen Herritage

**733D MISSION SUPPORT GROUP DEPUTY COMMANDER**  
Mr. Keith Morrow \*

**733D MISSION SUPPORT GROUP, ARCHAEOLOGIST**  
Dr. Christopher McDaid

**633D CIVIL ENGINEER SQUADRON, NEPA / CULTURAL RESOURCES**  
Ms. Sherry Johnson

\*INSTALLATION TRIBAL LIAISON OFFICER