

## Inside

**Helicopter maintenance.....A-5**  
**Trojan Spirit II.....A-7**  
**Dads Only.....A-6**  
**Chow in the PTA.....B-2**

## Infinite Moonlight '96

13th MEU (SOC) trains with Jordanian Army in Al Qatranah, Jordan. See *Every Clime and Place*, A-2



## Basketball season fires up

Men's varsity basketball team looks forward to new season beginning Oct. 15. See *Play Ball*, B-1



# Hawaii MARINE



Vol. 24, No. 37 Serving Marine Forces Pacific, MCB Hawaii, III Marine Expeditionary Forces, Hawaii and 1st Radio Battalion September 19, 1996

### BAC meeting

The Base Action Committee will meet at 7 p.m. Tuesday at the Pacific Hideaway. Representatives from Mokapu elementary, Kaleheo high and Kailua intermediate schools will attend the meeting.

### Corporal's Course graduation

Corporal's Course 11-96 will graduate Friday at 3 p.m. in the base theater. All are invited to attend. For military personnel, uniform of the day is appropriate, and for civilians, aloha attire. For more information, call 257-2688.

### Youth Challenge Briefing

There will be a Youth Challenge briefing tonight from 6 to 7:30 p.m. at the Bachelor Officer's Quarters Conference room. Volunteers interested in devoting six hours per month, including Marines, Sailors and family members 21 and over are invited to attend. For more information, call Sgt. Robert Bergmann at 257-3648.

### POW/MIA Ceremony

Marine Forces Pacific will honor former American Prisoners of War and those Americans still unaccounted for from past conflicts at an 8 a.m. ceremony at Camp H.M. Smith today. President Bill Clinton has proclaimed Friday as National POW/MIA Recognition Day 1996. The president urged all federal, state and local officials and private organizations to observe the day with appropriate ceremonies, programs and activities. BGen. Emil R. "Buck" Bedard, deputy commander, MARFORPAC, will be the keynote speaker and retired Marine LtCol. Orson Swindle, who spent six years and four months as a POW in Vietnam, will be the honored guest. Both will lay a wreath in honor of all former POWs and MIAs during the early morning ceremony.

### Domestic violence help numbers

Military shelter 533-7125  
 MPD 257-7114  
 Crisis Hotline 521-4555  
 Child Protective Serv. 832-5282

## Inside

Briefs.....B-6  
 Ads.....B-5  
 Impact Area.....A-3  
 Single Marine Program .....B-7

Ask the Commanding General questions via E-Mail:

BICE@CG@MCBH KBAY

Internet:  
 bicedf@mfp.usmc.mil

The Base Action Committee can be reached via E-mail:

BAC@CG@MCBH KBAY

## Crime from U.S. military down in Okinawa, say police officials

Pacific Stars and Stripes  
 Okinawa Bureau

CAMP FOSTER, Okinawa — The number of crimes committed by American servicemembers on Okinawa in the past year has gone down dramatically, Okinawa police say.

In a report released by Okinawa police recently, the number of criminal offenses committed of U.S. military personnel and Status of Forces Agreement civilians is down since U.S. military officials took steps to

control off-duty activities of servicemembers.

In the wake of the abduction and rape of a 12-year old Okinawa girl by three servicemen last September, military officials on Okinawa improved their briefings of incoming military personnel and set new restrictions on the sale of alcohol on base and liberty hours in popular bar districts off base.

Since the rape incident, in which the three men were convicted and sentenced to up to seven years in prison, Okinawa police reported a sharp decrease in crimes committed by Americans here under the

Status of Forces Agreement.

Okinawa police reported 34 criminal offenses committed by SOFA-status Americans in the year since the rape incident, all minor offenses.

For the first eight months of 1996 police reported 22 incidents involving Americans, resulting in 12 arrests, none of them for major felonies. If the trend continues, arrests will be down sharply from last year, when Japanese police arrested 62 American servicemen and civilians in 70 incidents, including two felonies involving five arrests.



SSgt. Gary R. Fannon, logistics chief, Combat Service Support Group 3, helps set up a general purpose tent during PTA 1-97.

## Offloading tests new scanning gear

Sgt. William Poff  
 Staff writer

KAWAIHAE PIER, Hawaii — The combat and logistics buildup for Pohakuloa Training Area 1-97 is being conducted as a Maritime Prepositioning Force exercise where the Marines of Combat Service Support Group 3 offload, scan, and through-put all combat and support assets to units.

With a new type of scanner, the Landing Force Support Party uses specialized software to track all vehicles and cargo until it's staged at the arrival and assembly operations element, where it can be assigned to a requesting unit.

"During offload and through-put, tracking gear becomes an accountability drill," said 1stLt. Norman L. Reitter, commanding officer, Landing Support Company. "Using

automated information technology, we are able to track the cargo and equipment with 'real time' speed."

By scanning bar code labels attached to the cargo, once the vehicle comes off the Logistical Support Vessel and then at each stage of the through-put process, LSC can give unit commanders the precise location of each piece of gear, Reitter said.

"This has been an outstanding training exercise," Reitter said. "Everyone is learning about the new equipment

and procedures needed to conduct an MPF offload and regeneration. A few modifications to the training were needed since we were not actually offloading an MPF ship, but a series of LSV deliveries from Oahu. This stretches the exercise's time to days longer than what an offload would normally take."

This was the first time an exercise of this size has taken place for a PTA evolution since the

brigade was disbanded, according to Reitter.

"This is also the first time CSSG-3 has conducted an actual MPF exercise," said Reitter. "PTA is not just an opportunity to train the infantry. From here on out we're going to conduct this type of exercise during each deployment here.

"Next time we should have all the offload organizations and communication assets in place

before offloading operations begin and we'll have them in place the entire exercise," Reitter continued. "This is a logistician's dream, because of all the logistical requirements and moving parts that make up an MPF exercise."

The initial commander's guidance was for a quick, efficient through-put, assets accountability and personnel and equipment safety, according to Reitter.

"I've been impressed with the work Marines of the LFSP. As of the sixth

See Gear, A-4

## Design Day comes to MCB Hawaii



Mokapu Elementary students give their input about the super playground

Cpl. Michael Wiener  
 Staff writer

Imaginations were running wild at Mokapu Elementary on Monday as kids brainstormed ideas for the new super playground while Barry Segal, architect for Leathers and Associates, took it all in. "Design Day has been a part of this company for 20 years," said Segal, "It is what we are all about. We think kids are the experts of play."

Segal started early Monday going into each classroom and asking the students what they wanted on their playground. "Not all of the ideas are workable," said Segal. "Kids start wanting carnival

rides and we just can't do that. The most profound idea was a petting zoo with live alligators."

The kids were excited about designing their own playground, and they agreed that kids know how to play more than adults.

"Kids have better ideas than adults because we know what we want," said Shannon Snell, 11. "When adults think of playgrounds, they think of monkey bars."

"It will be our playground with the ideas we thought of," said Robin Gander, 10.

Not only did kids think it was smart to

See Design, A-8

## EFMP slated to become mandatory

SSgt. Stephen Gude  
 Press Chief

In order to alleviate problems with humanitarian transfers, sign-up for the Exceptional Family Member Program will become mandatory soon, which would cut down on what officials have estimated to be nearly 1,200 humanitarian transfers since the Marine Corps' EFMP began with an All-Marine bulletin in 1990.

The Marine Corps could save a lot of money, Marines who have family members with special needs could save headache and worry by simply enrolling in the program.

Designed to assist monitors in determining where they assign Marines, with respect to the needs of their families, the EFMP program is sadly underutilized, according to experts in the program, from here and Washington, D.C.

"When a servicemember enrolls, not only is he or she doing their family member a favor," said Brian Goodson, EFMP coordinator, Family Service Center, Marine Corps Base Hawaii, "they're doing themselves a favor. They won't have to worry if they're going to be assigned



Goodson

See EFMP, A-8

## Every Clime and Place

# Infinite Moonlight '96 stars combat engineers

Sgt. Steve Ongley  
13th MEU (SOC) Public Affairs

**AL QATRANA, Jordan** — U.S. Marine and Jordanian army combat engineers had a blast conducting combined demolitions training here during Exercise Infinite Moonlight '96.

Marines from A Company, 1st Combat Engineer Battalion, Battalion Landing Team 1/4, 13th Marine Expeditionary Unit (Special Operations Capable) trekked to the demolition range each day for cross-training with their Jordanian counterparts, the combat engineers of the 10th Hashemite Brigade. The training solidified an already strong bond between the mine-finders from the two countries and allowed them to exchange techniques.

Combat engineers from both countries locate and clear obstacles so friendly forces can move safely



Sgt. Steve Ongley  
Cpl. Steve Carpenter, 1st Combat Engineer Battalion, primes an expedient Bangalore torpedo during Exercise Infinite Moonlight '96.

and create obstacles to hinder enemy movement on the battlefield.

The CEB Marines used the Jordanian desert to practice these skills. They set up concertina and barbed wire to stop troops and detonated shape charges and TNT to make a gaping hole in a road to stop vehicles. Once they created an obstacle, the Marines showed how they would get under, over, around or through it.

Before the exercise, the Marines prepared a variety of demonstrations for the Jordanians. The Marines found the Jordanians were familiar with American demolitions, said SSgt. Tbm McCloud, platoon guide, CEB detachment.

The explosives available were limited mostly to C-4 plastic explosives, shape charges and TNT. The Marines had to piece together the explosives and available materials to create expedient charges that fit the mission. The Marines concocted a claymore anti-personnel mine using C-4 and old nails; engineer stakes stuffed with C-4 served as expedient bangalore torpedoes, used for breaching wire obstacles.

"Our Marines improvised with the demo available to make the classes with Jordanians a success. They seemed impressed by our expedient charges," McCloud said.

The Marines were impressed with the camaraderie of the Jordanian engineers. The Jordanian engineers seemed to know each other's moves without even saying anything, said LCpl. Reuben Hernandez, combat engineer, 3rd squad.

But the Marines and Jordanians had to learn how to communicate with each other the first few days. The Jordanian officer and platoon sergeant spoke some English, but for most of the troops, conveying



Sgt. Steve Ongley  
LCpl. Rodolfo Estopellan (right), 1st Combat Engineer Battalion, shows a Jordanian engineer how to tie in an additional charge to the primary line of detonation cord.

ideas was reduced to hand motions or pointing out a phrase in a book put together by the BLT, said Hernandez.

Besides the language barrier, the Marines and their hosts worked through some other differences. All military organizations are mainly concerned with mission accomplishment, McCloud said, but they have different approaches to reaching their goal. Marines eat and drink on the run, but the Jordanians take breaks right in the midst of training to eat, drink tea or pray. The Jordanians helped the Marines appreciate the Arab approach to training during one of their breaks.

"When they brought out the watermelon and tea, I think that really broke the ice," Hernandez said.

"It's been good to go out and learn about another culture, while training and hands-on experience."

Every Marine did an outstanding job, McCloud said. When one Marine was called away to support another mission, the next Marine was able to step up and continue with the training.

"This was a unique experience. Because of cross-training with the Jordanians, we got to see how they did things and got a couple of ideas," McCloud said.

The training gave the Jordanians a variety of new ideas and techniques. They earned even more respect for U.S. Marines, but more so, the hosts had a blast making some new friends, said Sgt. Ahmed Onoff, platoon sergeant, 10th Hashemite Brigade.

**Hawaii MARINE**  
The Hawaii Marine is an unofficial newspaper published every Thursday by RFD Publications, Inc., 45-525 Luluku Road, Kaneohe, HI 96744, by a private firm not connected with the Department of the Navy or the U.S. Marine Corps. All advertising is provided by RFD Publications, Inc., 235-5881.  
Please call the MCB Hawaii Consolidated Public Affairs Office at 257-5600 for Windward and Leeward activities, FAX 257-2511. Opinions expressed by the publisher and combat correspondents are their own and are not to be considered an official expression of the DoN or the U.S. Marine Corps.

Items advertised in the Hawaii Marine must be made available for purchase, use or patronage to everyone without regard to race, creed, color, national origin, religion, age or sex of purchasers, user or patron. The appearance of all advertisements in the Hawaii Marine to include inserts and/or flyers does not constitute endorsement of the firms' products and services by the DoN or the U.S. Marine Corps.  
**Commanding General**.....BGen. D.F. Bice  
**Public Affairs Officer**.....Capt. J.C. Milliman  
**Press Officer**.....1stLt. Celeste Ricketson  
**Public Affairs Chief**.....GySgt. Ron Appling  
**Press Chief**.....SSgt. Stephen Gude

Editor.....LCpl. Douglas A. LaGore  
**Serving the following commands**  
Marine Forces Pacific.....LtGen. J.D. Howell Jr.  
III Marine Expeditionary Force.....MGen. W.E. Rollings  
Marine Corps Base Hawaii.....BGen. D.F. Bice  
3d Marines.....Col. J.D. Lenard  
Aviation Support Element, Kaneohe.....Col. M.J. Brousseau  
Combat Service Support Group-3.....Col. C.O. Skipper  
1st Radio Battalion.....LtCol. R.J. Ingold  
Marine Corps Air Facility.....LtCol. R.M. Thomas  
Headquarters Battalion.....LtCol. J.E. Hiett

**Dunn & Dunn Attorneys at Law A Law Corporation**  
•Uncontested Divorce  
•Bankruptcy  
**LOW FIXED FEES**  
**SATURDAY & EVENING APPTS.**  
Davies Pacific Center  
841 Bishop Street, #2221 • Ph. 524-4529  
**Greg T. Dunn**  
Former Military JAG Attorney

**SASSY BABY**  
Sassy Apparel  
For Newborn - Size 6!  
**NOW OPEN**  
Windward City Shopping Center  
Behind Baskin Robbins  
Open Tues - Sat 10am - 5pm & Sun 11am - 5pm  
235-7730

**1st Anniversary Sale**  
At Our New Location  
**SOLID ROSEWOOD...**  
Dining Tables & Chairs, Living Room Suites, TV/VCR Cabinets, Bedroom Suites etc.  
**20%-30% OFF**  
**SCREEN & HANGING PICTURES... Up To 60% OFF**  
**PORCELAIN, CLOISSONNE, JEWELRY BOXES, etc... 30%-50% OFF**  
Special Sale Prices are in effect thru Sept. 29, 1996  
**Chinese Dynasty Furnishings, Inc.**  
1908 S. Beretania St. • Ph. 942-2288  
MON-SAT 10-7  
SUN 11-5  
Free Parking Behind Store

**FITNESS SPECIALS**  
Sale good through 9/25/96.  
**CHAMPION NUTRITION**  
Met Max 2.7 lbs.....\$39.95  
Lean Gainer 2.48 lbs.....\$29.95  
Pro Score 2.0 lbs.....\$29.95  
Nutrimet 20 pk. box.....\$34.95  
Cortistat-PS 64 caps.....\$32.95  
**OEAS**  
Myoplex 20 pk.....\$33.95  
Phosphagen 325 gm.....\$35.95  
Phosphagen 510 gm.....\$53.95  
H.P. 21 servings.....\$22.95  
V2G.....\$21.95  
GKG.....\$17.95  
CLA.....\$24.95  
HMB.....\$26.95  
**TWIN LABS**  
Rx Fuel 10 pkts.....\$21.95  
Creatine Fuel Plus 15 pkts.....\$39.95  
Ultra Fuel 3.3 lbs.....\$12.95  
Male Fuel 120 caps.....\$23.95  
Diet Fuel 120 caps.....\$16.95  
Ripped Fuel 200 caps.....\$27.95  
Opti Fuel II 3.18 lbs.....\$22.95  
Mega L-Carnitine 12 oz.....\$12.95  
**ISLAND NUTRITION**  
22 Kailua Road, #103, Kailua 261-3559  
NUTRITIONAL NEEDS. BEST PRICES.  
**MET RX**  
60 pk.....\$8.95  
20 pk.....\$29.95

**BOSE**  
The Acoustimass® Super System From Bose®.  
The Missing Piece For Home Theater And Music At Home.  
Hear a demo. Hear the difference.  
Save Now On Acoustimass-7 Home Theater Speakers Front Channel  
• Identically matched speaker arrays for your front three channels provide theater quality sound, and add a whole new dimension to your TV enjoyment.  
• Includes Bose hideaway Acoustimass bass module.  
Save \$100  
Now Only **\$649**  
Save Now On Acoustimass-5 Speakers Rear Channel  
• Direct/Reflecting® speaker arrays provide room-filling sound and full stereo performance throughout the listening area.  
• Includes Bose hideaway Acoustimass bass module.  
Save \$100  
Now Only **\$499**  
Visit the new Bose Music Theater located in the Hickam Exchange.  
You'll discover how Bose® sound makes the performance come to life!  
**AAFES**  
Hickam Main Exchange • Schofield Barracks Main Exchange  
This advertisement was not paid for, in whole or in part, by the Department of the Army, Department of the Air Force or the Army and Air Force Exchange Service. This advertisement does not constitute an endorsement by the Army and Air Force Exchange Service, the Department of the Army, Department of the Air Force, or the United States Government of the products or services advertised.

## Impact Area

# Don't believe the hype about Hawaii public schools — get involved in education process

Rene Peters  
Parent-Teacher-Student Association

Some advice we received prior to transferring to Hawaii as a Marine family was "Buy a Jeep, you'll need it," "Plan to keep your dog inside to protect her from putting deadly bullfrogs in her mouth," and "Plan to send your children to private school because Hawaii's public schools are inadequate."

I can't say where this advice came from, it was mostly just "the word," and even though it was generally accepted, it was worth the price just to experience paradise.

Today, and 17 years later, I'm happy to say there is little truth to those words, nor was there any at that time. Having been heavily involved with the public schools here for the past 11 years, I am aware the perception and advice about Hawaii's public schools still exists among the military community.

It is important to help change that perception and show other families how to make the system work for them and their children. The benefits reaped are well worth the time and effort



Peters

involved.

As a Parent-Teacher-Student Association board member for 10 years, a parent teacher for four, and with three children at three schools, I have had many opportunities to talk with parents about every aspect of our public schools and their expectations. I offer this advice — don't listen to rumors, get the facts and get involved.

Granted, our schools are not perfect and the funding is inadequate, but there is so much we parents can offer. In our three public schools, parents and military personnel have repainted entire buildings, provided tutors, funded science labs, started

support groups, built playgrounds, organized field trips, initiated reading programs and supported existing school programs and events. By offering your time and presence, you not only show the school and its staff you care, thereby earning their trust to include you more, but you also plant the seed in your child's mind that education is utmost on your priority list.

"Getting involved" can start by simply joining the PTSA. This is the link that ties parents to what's happening at the school and offers them

ways to get involved. But it takes more than just submitting the dues. Parents must take the time to read everything that comes home. Most schools send a volunteer sign-up list. Sign up for those activities and projects where you can help, even if your child asks you not to,

**'Granted, our schools are not perfect and the funding is not enough, but their is so much we parents can offer.'**

Rene Peters  
MCB Hawaii community member

which happens often at the secondary level. If you're not receiving these forms, go to the school and ask for them, rather than do nothing. There are many ways to help where you won't even be seen by your teen. When you offer your help, even to do something as simple as stuff envelopes, it gets your foot in the door and gives you the opportunity to meet other parents and school staff, and gives you a chance to share your concerns and ideas, and to get the feel of the school. Attend PTSA meetings, Open House, Art and Literature nights. Read the newsletters that come home monthly — they're full of news your teen won't remember or desire to tell you. Start with the small projects that give you the confidence to gradually chair a committee or become a board member. You'll learn the process for voicing concerns or initiating action in a way that earns

respect.

If you don't have experience or a means of transportation, there are things you can do at home such as phone tree calling, or folding, stapling and labeling newsletters and flyers. These activities acquaint you with other parents and opens the network needed to be informed about your child's school.

Our schools don't need more negative publicity. There is nothing to gain by spreading rumors and passing along misinformation, or assuming the worst. If you take the time to investigate and give public schools a chance, you may be pleasantly surprised. If you have come to Hawaii with preconceived notions about Hawaii public schools, or feel you have no choice but to send your children to public school, take a positive approach and become an active partner in your child's school. My favorite quote applies here: "If you're not part of the solution, you're part of the problem."

(School officials will be available Tuesday at 7 p.m. at the Pacific Hideaway at the next Base Action Committee meeting.)

(Editor's Note: Voice your opinion in the Impact Area. Submissions may be sent via e-mail to either SSgt. Stephen Gude@CG@MCBH KBAY or LCpl. Douglas A. LaGore@CG@MCBH KBAY. The Hawaii Marine Offices are located in building 216. The fax number is 257-2511.)

### WARNING!

Are you looking to buy, upgrade, or replace a computer system??? We guarantee some of the lowest prices in Hawaii!! Check it out!!

Associated  
Computer  
Products

2543C Lawrence Place  
MCBH Kaneohe Bay  
(808) 254-4682

### This Week's Dinner Ideas...

Vegetarian Pastes,  
Homemade  
Indian Curries  
*and*  
'Nalo Greens!

For a limited time ...  
Fresh Mangos  
at ...

*Mango's*

MARKET AND COFFEE LOFT

263-6646

next to Kailua Post Office  
Mon-Sat 8:30-9:30  
Sun 10-4

ADVERTISEMENT

### Swiss Scientists Discover New Energy Product

Lugano, Switzerland—After 25 years of research Lightning 828 was developed with the help of Swiss Laboratories. After extensive testing with amazing results, Lightning 828 is now available in the United States. Scientists are amazed at Lightning 828's results on improved memory, attitude and athletic performance.

In a double blind cross-over trial on university students in Italy, Lightning 828 was given twice daily for 12 weeks. The results were astonishing. Students obtained higher scores in math, logic and physical education.

This new discovery has been a windfall for working and active people that seem to run short of energy around mid-afternoon and need a little extra lift. Lightning 828 when taken in the morning gives a sustained, balanced form of energy throughout the day.

During an interview in Chicago, a beautician stated, "I used to go home exhausted after being on my feet all day. Now it's just incredible. I go home with extra energy and really enjoy my family more." Lightning 828 is a necessary boost for students, professionals and senior citizens.

Lightning 828 is now available at most Kmart Pharmacies including:  
Honolulu—  
4561 Salt Lake Blvd. 486-6449  
500 Nimitz Hwy. 524-1568  
...or ask your favorite Pharmacy!

HAS IT BEEN SO LONG SINCE  
**YOU CALLED**  
THAT PEOPLE THINK YOU'RE HIDING  
**FROM THEM?**

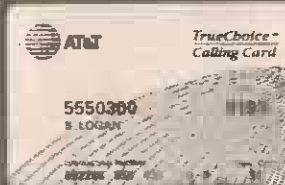


Even though you're out of sight, you don't have to be out of mind.

Give your friends and relatives a call using your AT&T True Choice™

Calling Card. It works from any phone, on or off base, 24 hours a day.

And with AT&T, you'll always get helpful service, competitive rates, and



features like AT&T True Messages™ Service that make staying close even easier. So come out, come out wherever you are. Call anytime,

anywhere with your AT&T True Choice

Calling Card. That's Your True Choice.™



AT&T  
Your True Choice

**CARRY THE CARD THAT TAKES YOU HOME. CALL 1 800 551-3131, EXT. 12298.**

**Habitat for Humanity International**

121 Habitat Street  
Americus, GA 31709-3498  
1-800-HABITAT

# Investigators valued in recent case

## Gear From A-1

LCpl. Steven Williams  
Staff writer

A Marine was sentenced to 10 years in a federal prison Sept. 10 after an investigation in May by two Naval Criminal Investigation Service agents uncovered a potential methamphetamine laboratory and explosive devices and materials.

Special agent Rodney Budd, NCIS, received information in January which tipped off possible drug related activities in the home of Cpl. Jonathan M. Christman here.

"We knew he was very interested in starting a meth lab and he had approached other individuals to go into this venture with him," said Ken L. Minnick, special agent, NCIS.

Working closely with Minnick and Patricia D. Sorenson, forensic chemist, NCIS Regional Forensics Laboratory in San Diego, Calif., the NCIS team used a number of techniques to confirm information about chemicals, materials and literature in the Marine's possession, according to Minnick.

However, in May "the case got cold and we weren't sure what we had, so we pulled the subject in and attempted to interrogate him," said Minnick. "He immediately invoked, which means he either asked for an attorney or requested to remain silent."

Immediately following Christman's automatic withdrawal from questioning, the agents obtained more informa-



LCpl. Steven Williams

Special agent Ken Minnick, Naval Criminal Investigative Service, has served with NCIS for more than seven years. He said this incident was a first for the MCB Hawaii community.

tion which sustained probable cause for a command authorized search warrant.

Along with all the beginning ingredients for a large methamphetamine production lab, said Sorenson, the agents walked into a highly explosive situation.

"We uncovered a number of dangerous items such as three one quarter sticks of TNT, black powder, simulated booby traps, two handguns and a sawed off .22 caliber rifle," said Mark E. Pendell, resident agent in charge, NCIS. "He had expanded to some very dangerous activity."

"He also attempted to manufacture

what we believe is RDX," said Sorenson. "RDX is the concentrated form of C-4. When it is being manufactured, it's highly sensitive and unstable."

His life wasn't the only risk Christman was taking, according to Minnick.

"There are 40 or more families within a 200-foot radius of the building," said Minnick. "He put them all in very serious danger."

"On a still day with no wind at all, if a fire broke out there would've been an immediate explosion," said Sorenson. "Not only would the

immediate area be in danger, but the entire base would have been involved because of the toxic gases given off."

"Who knows what kind of chemical cloud that could have created," Minnick added.

The methamphetamine-related materials recovered included chemicals, glassware, heating devices, breathing apparatuses along with volumes of hooks, notes, papers and recipes on chemical mixtures, Sorenson said.

"He had everything you need to start a meth lab," said Minnick. "But he was stopped short before he got cranked up. Although NCIS was successful in undermining the brewing narcotics operation, Sorenson said Christman passed a deadly chore over to the agents.

"There was evidence uncovered that the chemicals should be destroyed as soon as possible," said Sorenson. "They were very unpredictable and not worth human life trying to figure out what they were."

The chemicals were destroyed in a safe place at the range here, Sorenson said.

A judge sentenced Christman to 25 years confinement, reduction to E-1, forfeiture of all pay and allowances and a dishonorable discharge. Due to a pre-trial agreement, imprisonment was reduced to 10 years while the remaining punishments went unchanged.

offload, have made 45 convoys to to the exercise area, transporting over 295 pieces of equipment and 21 containers," Reitter said. Speed and responsibility during the exercise is a facet the Marines handled well, he added.

"Everything that happens at the port is my responsibility," said 2ndLt. Elizabeth J. Donnell, Port Operations Group officer in charge, CSSG-3. "Speed and accountability make the mission and situational demands dictate everything. Who needs what and where does it need to go? Sometimes the pier operations group and the final destination could be 300 miles apart."

Every day and every offload, the Marines make improvements and changes to become more efficient, Donnell said.

"The most interesting aspect of the exercise is everybody is training together and learning from mistakes now, not when we're called to do a real life mission," Donnell added. "Everybody's learning from this exercise and this enhances our knowledge as duty experts for loading and offloading combat and support assets."

"Enthusiasm to learn procedures and the new scanning equipment is very high," she added. "These Marines are anticipating being included in this year's Freedom Banner and Cobra Gold exercises."

These exercises the lessons learned from this one will make their mission run even smoother."

# NCIS protects quality of life worldwide

LCpl. Steven Williams  
Staff writer

The primary function of Naval Criminal Investigative Service isn't to hunt down bad guys and ensure they are dealt with appropriately. That's a benefit.

The organization's most important function is protecting quality of life issues and contributing to command readiness, according to Mark E. Pendell, resident agent in charge, NCIS, here.

"NCIS serves the community by providing an investigative function to address felony situations," said Pendell.

NCIS has 950 special agents spread through-



Pendell

out 160 offices worldwide including aircraft carriers and other major combatants, according to Pendell. The special agents are civilian professionals serving the Navy and Marine Corps with criminal investigations, counterintelligence and naval security.

Unfortunately, some in the military community view NCIS as the enemy, according to Ken Minnick, special agent, NCIS.

"The only reason they should think we're the enemy is if they're doing bad things," said Minnick.

Although NCIS is forced to become the adversary to trouble-makers, Minnick said commands depend on them.

"Sometimes commands see us as a necessary evil," said Minnick. "Without us they would have a lot of problems. We definitely assist these units by making cases against bad eggs who have no business being Marines."

Recently, an undercover agent busted a ring of more than 30 ser-

vicemembers involved in marijuana. One Marine acted as the primary distributor while others were either sellers or habitual users.

"All of them were punished, ranging from non-judicial punishment to five years in prison," said Minnick.

"We know drugs will be a problem and will require a great deal of vigilance by all involved to stop it," said Pendell. "Drugs are available in Hawaii. People who are looking for trouble will find it."

Many cases NCIS handles are successfully investigated with information from anonymous witnesses or undercover operations, according to Minnick.

"We need the cooperation of citizens, Marines and commands to work our cases effectively," said Minnick. "We can't work without cooperation from the commanding officers on down."

Minnick said NCIS's mission is merely taking out the garbage so innocent people in the military community don't have to worry.

# TRUCKLOAD SALE

SALE: SEPT. 13TH-23RD



WE MAKE THE WORLD'S BEST MATTRESS



AVAILABLE IMMEDIATELY  
SERTAPEDIC ADVENTURE  
TWIN \$199/SET  
FULL \$269/SET  
QUEEN \$339/SET  
KING \$399/SET  
WHILE SUPPLY LASTS

### ALSO ON SALE -

<b>SERTAPEDIC LIMITED</b> Twin ..... \$179/set Full ..... \$220/set Queen ..... \$266/set King ..... \$362/set	<b>PERFECT SLEEPER OPAL</b> Twin ..... \$278/set Full ..... \$348/set Queen ..... \$418/set King ..... \$551/set	<b>PERFECT SLEEPER EXQUISITE</b> Twin ..... \$321/set Full ..... \$398/set Queen ..... \$465/set King ..... \$624/set
<b>PERFECT SLEEPER ULTRA</b> Twin ..... \$395/set Full ..... \$495/set Queen ..... \$582/set King ..... \$782/set	<b>PERFECT SLEEPER ULTRA PILLOW-TOP</b> Twin ..... \$414/set Full ..... \$518/set Queen ..... \$595/set King ..... \$799/set	<b>PERFECT SLEEPER ASTOR</b> Twin ..... \$450/set Full ..... \$578/set Queen ..... \$657/set King ..... \$874/set

Kaneohe Bay  
**Marine Corps Exchange**  
 -AN MWR ACTIVITY-  
**Home Interiors**  
 Monday-Friday 11am to 7pm  
 Saturday-Sunday 10 am to 5pm  
 Phone: 254-7637



# Miss Our Luau And You've Blown it

Everyone should experience a real luau. Ours is considered Oahu's best. Miss this one, and you've really blown it! With the sunset as our backdrop, learn lei-making over cocktails and then feast on luau favorites while entertained by lovely hulas and a Samoan fire knife dance! Dinner call for this dazzling show is every Monday and Thursday at 5:00 PM; \$27.95 adults, children under 12 \$17.95. If you're looking for variety, we also have a spectacular magic show and a superb Polynesian Revue. Call today for reservations.

**HALE KOA HOTEL**  
 2055 Kalia Road • 955-0555

This advertisement was not paid for, in whole or in part, by the Marine Corps or the Marine Corps Exchange. This advertisement does not constitute an endorsement by the Marine Corps Exchange, the Department of the Marine Corps or the United States Government of the products or services advertised.

# Helicopter maintenance at sea remains a priority with HMH-463

LCpl. Steven Williams  
Staff writer

**U.S.S. BOXER** — During flight operations from naval vessels, pilots are normally in the spotlight as they demonstrate how to negotiate wind and a ship's rocking flight deck. Although the pilots are important as front men in operations, it's the Marines behind the curtains who run the show.

"The greatest thing we have working for us is the guys behind the scenes keeping the aircraft up and running," said 1st Lt. Pete McConnell, co-pilot, Marine Heavy Helicopter Squadron 463, here. "There is a high demand on our maintenance effort and they work a lot of overtime. We wouldn't be flying without them."

HMH-463 boarded the U.S.S. Boxer (LHD-4) Sept. 3-10 for some rare shipboard experience with their Navy counterparts, said McConnell. Keeping up with maintenance on 30-year-old CH-53D Sea Stallions is quite a chore for Marines in any area. Shrinking into the tight confines aboard ship and adding the effects of water doesn't help.

"You have to watch the helicopters carefully because of the salt water spray," said Cpl. Allan M. Ziepke, aircraft mechanic. "It's a lot easier for corrosion to start and it will destroy the parts fast."

With the danger of salt water more eminent at sea than here, the Marines put in overtime during both maintenance and inspections.

"We do seven-day inspections, which take an average of one hour," said Cpl. Dillon C. Stone, collateral duty inspector. "During an inspection, we do things like fold the tail, inspect disconnect couplings for excessive wear, corrosion or cracked teeth. We inspect hinge bushings and hinge pins and we make sure bolts have the correct torque."

The Marines spent around 10 hours a day ensuring the aircraft were up to par, according to Stone.

"If anything on the aircraft goes bad, we have to replace it," said Ziepke. "We have to guard all the major components and make sure they don't go



Cpl. Dillon Stone, left; aviation collateral duty inspector, and Cpl. Allen Ziepke, aviation mechanic, HMH-463 perform a preflight inspection on a CH-53D Sea Stallion Helicopter.

bad. For example, we have a lot of problems with drive shafts. They take anywhere from an hour to two hours to replace."

And on a ship, getting to those hard-to-reach places gets even harder.

"We focus a lot more on safety with the stands and working on top of the aircraft because if the ship turns or hits a wave, we can be thrown off," said Ziepke. "It keeps us more aware of what we're doing. Being careful makes us more proficient."

"This training will make us more ship safety oriented for when we go on a ship again," said Stone. "I won't be lost like I was this time."

Besides expanding on the motto "safety is paramount," Ziepke said the Marines also got better with the speed of their service.

"We constantly had to have the aircraft folded on ship for space reasons," said Ziepke. "On land, we can keep them spread most of the time. This training made us better at folding them quickly."

Training wasn't the only advantage to packing the squadron onto a ship for a week, Ziepke added.

"When we do something like this, we seem to get a lot closer and we work better together," said Ziepke. "On base, we're always thinking about what we're going to do when we go home and we concentrate more on after-work activities."

Although the Marines worked a lot of overtime, fought sea sickness from the constant swaying and were confined to small quarters, some said they are anxious to do it again.

"We need to do this training more often," said Cpl. Douglas M. Mania, crew chief. "You don't get proficient at something without doing it often. Doing this training more often would make us more comfortable with deployments."

Squadrons here are discussing unit deployment programs aboard ships, according to McConnell. If squadron UDPs are approved, HMH-463 is already one step closer to preparation.



LCpl. Steven Williams

The leathernecks of Marine Heavy Helicopter Squadron-463, deployed aboard the USS Boxer Sept. 3-11 for Exercise Barking Sands. They found, regardless of the location, inspections and maintenance remain high on their list of priorities.

**Thai Orchid**  
AT AULIKE STREET  
KAILUA, HAWAII

Serving the finest Thai Cuisine and offering vegetarian selections

**LUNCH**  
Mon-Fri 11am-2:00pm  
**DINNER**  
7 Days 5-9:30pm

33 Aulike Street, Kailua  
**263-8281**

**15% Discount Nightly**  
Off Your Entire Bill (excluding alcohol)

Please present coupon

**NON-STOP TRAVEL**

	ONE WAY	ROUND TRIP
SFO	\$154	\$229
LAX	\$154	\$198
Seattle		\$289
Las Vegas		\$309
Raleigh-Durham		\$599
Florida		\$599
New York		\$599
Vancouver		\$299
Paris		\$664
London		\$698

SERVING ALL ARMED FORCES  
**SPECIAL MILITARY RATES AVAILABLE**

**CALL 593-0700**

M-F 8:30 a.m. - 6:00 p.m.  
Sat 9:00 a.m. - 3:30 p.m.

1350 S KING ST. #101  
Across From TACO BELL  
Validated Parking  
CERTAIN RESTRICTIONS APPLY. TA #1076

**OUR LIFELINE IS TOLL-FREE**

Grab the line and let us help you.

THE VOICE OF HOPE

**1-800-572-1717**

**MDA** Muscular Dystrophy Association

Don't Miss The **BIGGEST** Electronics Sale In The **UNIVERSE**

The **POWER ON** Audio Video Photo Sale 1996

NEW MODELS

MANY PRICES LOWEST EVER!

Don't Get Short Circuited!

Don't Get Short Circuited!

BEST SELECTION ON EARTH... OR ANY OTHER PLANET



**IDENTA-KID STATION**  
Schofield Bks. MP'S

Saturday & Sunday **LIVE ENTERTAINMENT**

**POWERFUL FUN FOR THE ENTIRE FAMILY**

**SPECIAL APPEARANCE**  
• McGruff  
• Carebears

Popcorn Only **25¢**  
A Bag

Hotdog **49¢**

**TRIVIA CONTEST**  
(instant winners)

**LIVE! Karaoke Contest Adults**

Saturday Oct. 5

To Enter: Drop Off a cassette of your talent at the Schofield Main Exchange. I.D. Center.

**LIVE! Keiki Karaoke Contest Children**

Sunday Oct. 6

To Enter: Drop Off a cassette of your talent at the Schofield Main Exchange. I.D. Center.

**AAFES**

Only at **SCHOFIELD BARRACKS PX**  
Friday, 4 October - Sunday, 6 October Hours: 0900 to 1900

# 'Dads Only' Class prepares new fathers for parenting

Cpl. Michael Wiener  
Staff writer

Grown men scamper to a table and begin changing soiled baby diapers. Diapers changed, they rush their babies to the finish line, but oops! Clean diapers fall to the floor, revealing baby bottoms still soiled with boo-boo.

Scenes like this, played with dolls as the babies and peanut butter as the boo-boo are part and parcel of the Dads Only Class, part of an eight-week parenting course by the New Parent Support Program.

The class is part of an eight-week parenting course set up by the New Parent Support Program. It is an open discussion on several topics, all of which involve fatherhood.

"The Dads Only Class helps dads or dads-to-be understand what their role is," said Nancy Tahara, New Parent Support Program. "It also gives them a chance to express their concerns and ask other fathers for advice. Hearing stories and getting advice from other fathers who are the same age and in the same profession is more credible than hearing it from me," said Tahara.

"I can learn a lot from the experiences of other fathers," said Sgt. David Adams. "It also teaches first-time dads what to expect and gives them a chance to ask questions."

Many times during a pregnancy, a father-to-be will feel left out or, as though he is not important.

"I like this class because it made me feel more important," said Sgt. Anthony Staley. "I was getting jealous of my wife because it seemed she was getting all of the attention."

The class also involved some



Proud parents found more than they expected during the Dirty Diaper Rodeo.

Cpl. Michael Wiener

discussion on the mother, and the emotions and hormone changes she was going through.

"Talking to other dads gave me a better understanding of what I have to expect, and I learned a lot about what women have to go through," said Staley. "Being a mother is a tough job."

But it wasn't all serious discussion. At the end of the class, the dads compete in the Dirty Diaper Rodeo, a race to correctly change a "dirty" diaper on a doll.

"The rodeo was an excellent practical application," said

Capt. Steve Neary.

While dads were busy cleaning up, moms had their a class as well, but this is the only time throughout the course a couple will be in a separate class.

The Dads Only Class is just one part of the "Expectant Parent Class," and it is recommended that couples start with the first course, "The Last Nine Yards." Free childcare is provided as long as the child has an up-to-date shot record.

"I recommend any parents or parents-to-be take this course," said Tahara. "It is ongoing parenting education."

## Helpful Numbers at MCB Hawaii, K-Bay

Family Service Center	257-8635
TAMP	257-8135
Early Childhood Education	257-7430
Navy Marine Corps Relief Society	254-1327
American Red Cross	257-8150
Military Police Department	257-7114
Legal Assistance	257-0074
Marine Corps Exchange	254-7515
Information, Tickets and Tours	254-7562

## Blotter

• Military police arrested a man after they found a pack of rolling papers and marijuana in his vehicle during a command-authorized vehicle inspection. He was charged with possession of a controlled substance, and the evidence was released to the Honolulu Police Department.

• Military police arrested a man for driving under the influence after stopping his 1995 Nissan for speeding on Bancroft Dr. After smelling alcohol on the man's breath, MPs conducted field sobriety tests, all of which the man failed. A breath test revealed a blood-alcohol content of .053 percent. The man was issued tickets for driving under the influence, speeding, driving without proof of Hawaii no-fault insurance and driving on state/base suspension.

• A man was arrested by MPs for driving under the influence after he was stopped at the H-3 gate during a 100 percent identification check. After smelling alcohol on his breath, MPs administered field sobriety tests, all of which the man failed. He was given a breath test, which revealed a blood-alcohol content of .091 percent. MPs gave the man a ticket for driving under the influence.

### COMMUNITY ACTION LINE

The Military Police Department has a 24-hour recorded Community Action Line set up to assist in any questions or concerns you may have. Call today and take a bite out of crime, 257-6800.

### EVIDENCE/LOST AND FOUND

The lost and found custodian has in his possession bicycles, keys and other miscellaneous items. If any of these items belong to you, contact Sgt. Everette at 257-0055. The MPD disposes of unclaimed property after holding them for 45 days.

★★★★★★★★★★  
**MILITARY LOANS**  
**UP TO \$2,500**  
 • NO ADVANCE FEES.  
 • REPAY MONTHLY.  
 • PROMPT FRIENDLY.  
**24-HOUR HOTLINE**  
**623-3838**  
 U.S.A. FINANCIAL  
 SOME RESTRICTIONS APPLY.  
 ★★★★★★★★★★

**PETER K. BUDNIKAS, D.M.D.**  
 "Dr. Bud"  
**Practicing Family Dentistry**  
*New Patients Always Welcome*  
*Military Families • Local Residents*  
 Pali Palms Plaza • 970 N. Kalaheo Ave., Ste. C-309, Kailua  
 Office Hours  
 By Appointment **254-5503**

**UNCONTESTED DIVORCE!!**  
**\$250** ... w/o children  
**\$275** ... w/ children  
 -Flat Rate. No Hidden Fees-  
 (Work done by experienced Paralegal)  
 Other Paralegal Services Available At  
 Very Reasonable Rates  
**Legal Assistant Services**  
**534-5234** call ext 101

You're invited as **OUT OF AFRICA**  
 AFRICAN • ARTS • GALLERY  
**Celebrates its 3rd Anniversary**  
**Friday, Sept. 27-Tuesday, Oct. 1**  
**31% Off All Merchandise**  
 Pearlridge Mall Downtown 487-2086  
 Ward Warehouse 591-6260

**BELTS & HOSES**  
  
 Russ, Service Manager  
 "Need an estimate? Call me!"  
 A belt slipping around a pulley reduces the efficiency of the components it drives. A worn, defective, or incorrectly tensioned belt can lead to battery failure and engine overheating. Cracks on the undersides of belts can lead to loose belts. This greatly reduces belt life. A belt with cracks can break without warning and should be replaced.  
 A glazed belt with its slick, hard, board-like appearance may fail to grip the pulleys properly and slip. This can also cause a discharged battery, engine overheating, and early belt failure.  
**Belt Deflection Test**  
 After completing belt inspection, check belt tension. Depress the belt with your thumb, midway between the pulleys. If the belt goes in more than one-half inch when applying pressure equal to replacing a crimped bottle cap, the belt needs retightening.  
**Inspection**  
 Squeeze the hoses. They should not feel brittle or spongy. Squeezing the hoses is the only way to check the interior of the hose without removing and visually inspecting them. If a hose is leaking at the connection, tighten the clamp. If tightening does not stop the leak, or if the clamp cannot be tightened, have the hose and clamp replaced. Pay particular attention to the short bypass hose (near the water pump) because this hose is under severe service and should be replaced if it shows signs of deterioration.  
**FREE BELT & HOSE & UNDERCAR INSPECTION**  
 Our experts will inspect your car's belts, hoses, exhaust and brake systems, springs, struts, shocks & CV joints. To keep you trouble-free. No obligation. expires 10-15-96  
 Aikahi Park Shopping Center  
 25 Kaneohe Bay Drive, Kailua  
**254-1150**  
**AUTOMASTERS**

**Fujio Matsuda Education Center**  
 Windward Community College  
 45-720 Kealahala Road • Kaneohe, Hawaii 96744  
**1-2-3 Day Sessions**  
**COMPUTER COURSES MADE EASY!**  
**SEPTEMBER/OCTOBER 1996**

COURSE#	COURSE	DATES	DAY	TIME	TEE
<b>PC/PC COMPATIBLES</b>					
C96 251	Hard Dist Management	9/21	SAT	9-1 pm	\$45
C96 254	Int. WordPerfect 5.1	9/24-26	TWTH	6-9 pm	\$90
C96 257	Advanced Disk Op Sys	9/28	SAT	9-4 pm	\$60
C96 259	Intro PC/Compatibles	10/1 & 2	TW	6-9 pm	\$40
C96 261	Disk Operating System	10/3	TH	6-9 pm	\$35
C96 267	Intro WordPerfect 5.1	10/8-10	TWTH	6-9pm	\$90
C96 279	Intro PC/Compatibles	10/22-23	TW	6-9 pm	\$40
C96 280	Disk Operating System	10/24	TH	6-9 pm	\$35
C96 282	Hard Disk Management	10/26	SAT	9-1 pm	\$45
<b>WINDOWS COURSES</b>					
C96 263	Computers 101	10/5	SAT	9-1 pm	\$60
C96 266	Intro Windows 96	10/8 & 10	TTH	9-12 noon	\$90
C96 269	Hard Disk Mgmt/W95	10/2	SAT	9-12 noon	\$45
C96 273	Intro Windows 95	10/15 & 17	TTH	6-9 pm	\$90
C96 276	Computers 101	10/19	SAT	9-1 pm	\$60
C96 281	Intro On-Line Resources	10/26	SAT	9-12 noon	\$45
C96 284	Intro Windows 95	10/28-29	MT	6-9 pm	\$90
C96 285	Intro Windows 95	10/29 & 31	TTH	9-12 noon	\$90
<b>MACINTOSH COURSES</b>					
C96 252	Intro ClarisWorks	9/21	SAT	9-4pm	\$60
C96 253	Intro MS Excel	9/23 & 25	MW	6-9 pm	\$60
C96 255	Intro to Macintosh	9/24	T	6:30-9:30 pm	\$30
C96 256	Intermediate Macintosh	9/26	TH	6:30-9:30 pm	\$30
C96 258	Intro FileMaker Pro	9/28	SAT	9-4 pm	\$60
C96 260	Intro to Macintosh	10/1	T	6:30-9:30 pm	\$30
C96 262	Intermediate Macintosh	10/3	TH	6:30-9:30 pm	\$30
C96 264	Intro ClarisWorks	10/5	SAT	9-4 pm	\$60
C96 265	Intro MS Word	10/7 & 9	MW	6-9 pm	\$60
C96 270	Intro to Macintosh	10/12	SAT	9-12 noon	\$30
C96 271	Intermediate Macintosh	10/12	SAT	1-4 pm	\$30
C96 272	Intro Excel	10/14 & 16	MW	6-9 pm	\$60
C96 274	Intro ClarisWorks	10/15 & 17	TTH	6:30-9:30 pm	\$60

Special arrangements for the disabled may be made if requested in advance. Contact the WCC Office of Community Services at 235-7433 to make arrangements. Refer to the Catalog of Events for policies and procedures for non-credit courses.  
**To Register, Call 235-7433.**  
**VISA & MasterCard Accepted.**

**EXCLUSIVELY YOURS.**

Buy from GSA's  
**Customer Supply Center,**  
 Hickam AFB, Hawaii.

**LOWEST PRICES**

As a Hawaii, Mid-Pacific or Far East customer, you have special needs. GSA is in business to exclusively serve those needs. We can get supplies to you within 5 to 7 days using USPS Priority Mail!

Your time is valuable as you work to achieve mission requirements. Let us serve you in this effort!

Hickam Customer Supply Center works with you to provide the products you want and need. We exceed all environmental and procurement regulations, so shopping with us is worry free.

Call now for a copy of our new Hickam Customer Supply Center Picture Catalog!

**FAST SERVICE**  
**QUALITY SUPPLIES**

CALL: Commercial (808) 448-8937  
 DSN 448-8937  
 FAX: Commercial (808) 449-1835  
 DSN 449-1835

**COMPETITIVE PRICES**  
**ONE-STOP SHOPPING**

We accept the LHM.P.A.C.® Visa Card.

# Trojan Spirit II gives Marines a new ear

**Cpl. Michael Wiener**  
Staff writer

First Radio Battalion recently benefited from the addition of the latest in communications technology.

Although First Marine Expeditionary Force received an earlier version of the new Spirit system, 1st Radio has gone one better, procuring the updated version. The system can pass intelligence information anywhere in the Marine Corps much quicker than old communication systems.

"The Special Purpose Integrated Remote Intelligence Terminal is a robust communications system to help support operations," said Capt. Soren Ashmall, commanding officer, C Company. "It will facilitate the flow of



Cpl. Michael Wiener  
*Every inch of the Trojan Spirit is used to stow gear inside and out.*

critical information to the component commander and his staff, giving Marines state of the art satellite capability."

The Trojan Spirit II is comprised of two Humvees with shelters, and the satellite antenna. The main Humvee has all the

communication equipment and tows the second Humvee carries spare parts and maintenance gear, but can be utilized as the main communication center. A four-man team runs the \$1.5 million system, and it can be augmented by one general maintenance technician, Ashmall said.

Two Trojan Spirit II communication systems were assigned to the battalion. One of the systems will be designated for III Marine Expeditionary Force, and the other will be for the commander of Marine Forces Pacific.

"The addition of Trojan Spirit II gives the MEF commander a new weapon in his arsenal if called upon for a mission," said Ashmall.

## Salutes



### 3rd Battalion, 3rd Marines

**Promotions**

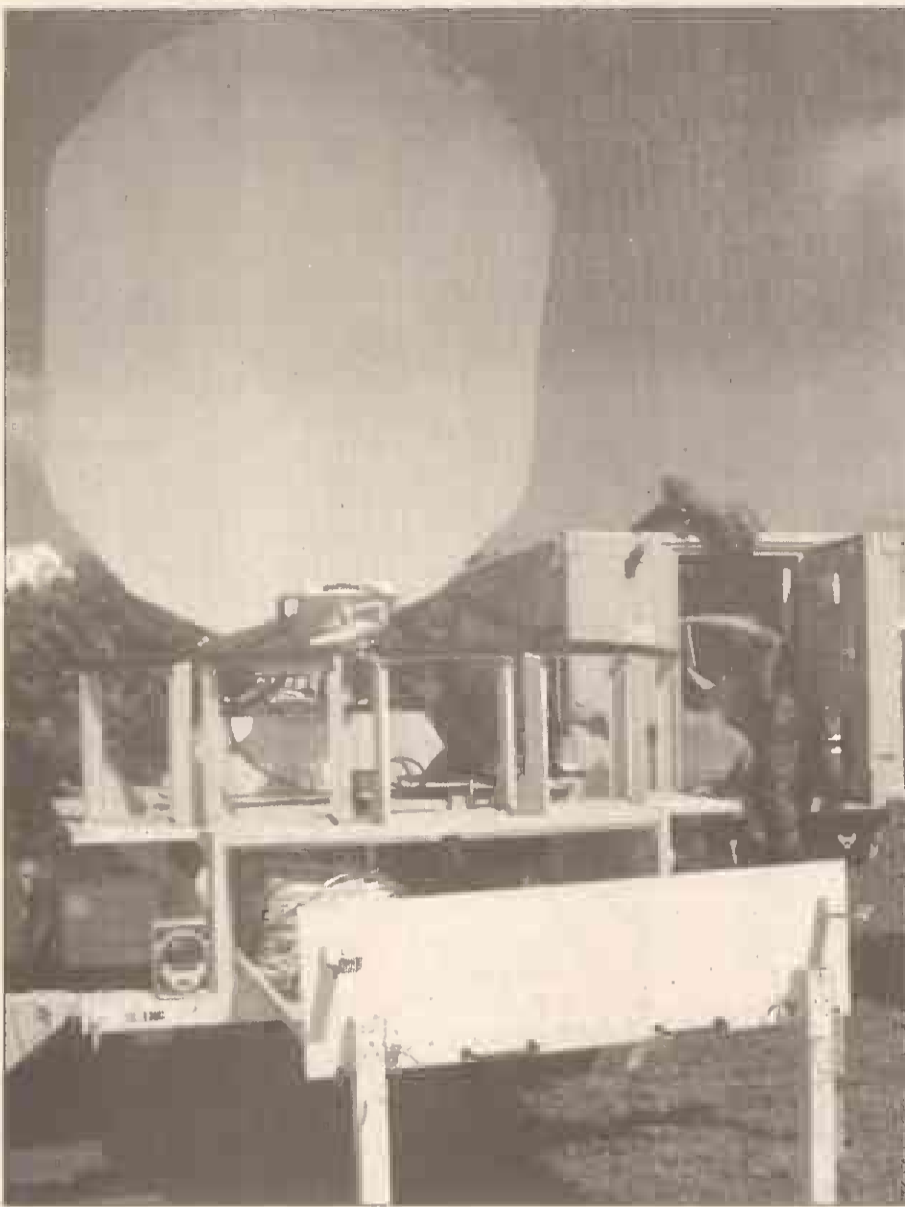
- Cpl. B.R. Bender
- Cpl. B.T. Thrasher
- LCpl. K.C. Anderson
- LCpl. R.L. Watson
- PFC K.R. Eddins
- PFC W.D. Couch



### HMH-463

**Promotions**

- Sgt. B.K. Lynch
- Cpl. E.M. Cole
- LCpl. A. Alvarez



Cpl. Michael Wiener  
*The Special Purpose Integrated Remote Intelligence Terminal is a new intelligence communications satellite recently acquired by 1st Radio Battalion.*

**PAGING SERVICES, INC. SEPTEMBER SPECIALS!!**

**Tutti Pager**  
• Alarm Clock  
• 20 Messages  
• Time Stamp  
& More  
**\$39.95** + Tax  
\*Requires 3 months Airtime & Activation \$84.00 Out the Door + tax.  
FREE Numeric Retrieval (Never Miss a Page!) FREE Maui Coverage.  
900 Maunaloa St. • Corner of Nimitz Hwy & Maunaloa St. • Public Parking Available In Martin Tower, Corner of Smith & Nimitz  
Exclusive Authorized **PAGERNET** Distributor  
PAGERNET is a Registered Trademark of PAGING NETWORK, Inc. **536-8114**

**NEC Exec**  
**\$29.95** + Tax  
• Time Stamp  
• Alarm Clock  
• 16 Messages  
& More  
Add price \$4.00 per month for

**ROYAL ADVENTURE TRAVEL**  
3615 Harding Avenue (Between 12th & Koko Head)  
3229 Koapaka St. (Behind Airport Plaza Hotel)

**INTERISLAND COUPONS** CALL 839-0039/732-2211

**DOMESTIC AIRFARES** CALL 732-5533/839-0039

HAWAIIAN		LOS ANGELES	MIDWEST	EAST COAST
MAHALO \$39	ALOHA \$38	\$198	\$454	\$474
ISLAND AIR \$47		San Francisco \$210	\$265 One Way Little Rock Atlanta Chicago Houston	\$268 One Way Boston New York Washington D.C. Orlando
Air/Car p/p Based on 2. MAHALO AIR \$59		Seattle \$270 Portland \$290	New Orleans Raleigh, New York (Call for other cities)	
Air/Room/Car p/p Dbl. Occ. Based on 2. \$89		Maui, Hilo, Kona, Kauai	(Call for other cities)	

Cash & Carry, No Checks or Charge Cards  
Roundtrip, Midweek, High Season, Subject to availability. Restrictions apply.

**ATTENTION: MARINES**  
**Eyeglass & Contacts Discount**  
Same Day Or Next Day Service  
On Most Single Vision Orders

**50% OFF** All Frames • **\$39.00** Single Vision Lenses  
**\$24.95** Bausch & Lomb or Accuvue Disposables  
**\$69.00** Flat Top 28 Bifocals • **\$99.00** Progressive Bifocals

Please present this coupon and military ID • Offer expires 9/30/96

**Kailua Optical** 315 Uluniu St., Kailua  
In Kailua Square 262-6191

**Marlboro Lights**  
The spirit of Marlboro in a low tar cigarette.

© Philip Morris Inc. 1996  
Kings Men: 10 mg "tar," 0.7 mg nicotine; Kings Box & Soft & 100's: 10 mg "tar," 0.8 mg nicotine av. per cigarette by FTC method.

**SURGEON GENERAL'S WARNING: Smoking By Pregnant Women May Result in Fetal Injury, Premature Birth, And Low Birth Weight.**

# EFMP

From A-1

to a place where they can't take care of their family member."

"When a Marine who hasn't enrolled is sent to a base where his or her family member's needs can't be met, it creates a ripple effect throughout the Marine's entire job field, especially when that person has to be reassigned to somewhere else," said Belinda A. Sims, EFMP manager, Family Service Center Program, Headquarters Marine Corps. "When one Marine gets reassigned, it affects other Marines whose orders and assignments have to be changed to accommodate the other Marine."

The Corps spent \$1.65 million from January to August this year returning 55 Marines from overseas assignments, primarily Okinawa, because they were not enrolled in EFMP and had to be elsewhere to meet a family member's special needs, according to Sims.

"It's about \$30,000 each to reassign a servicemember," said Sims. "It will run to about \$3.3 million for the year." Once the commandant of the Marine Corps, Gen. Charles C. Krulak, heard this news, he wasn't happy, Sims said.

"He had a fit," she said. "He realized the only reason we're spending this kind of money is because these Marines either were not on the program, so their monitors didn't know not to send them, or because they weren't screened properly before they left."

"According to Marine Corps Order P175.4 from October 1992, sponsors must enroll their family members in the program," Sims said. Those who don't will face some form of punishment, as Sims said a proposal is going through the HQMC chain which would allow administrative action against sponsors who don't enroll their exceptional family member.

"We're also looking at a recommendation to hold the sending command responsible for personnel who have to come back due to a screening deficiency," said Sims.

However, there's a simpler solution, Sims said: all Marines with special needs family members should sign up, even in boot camp and Officers' Candidate School.

The Family Service Center would like to get Marines to enroll as soon as they become Marines, whether it's boot camp or OCS, which would boost the number of enrollees by five to 10 percent, according to Sims. A stumbling block to enrollment has always been the perception enrolling in the EFMP would hurt careers, she added.



Sims

"Enrollment has picked up," Sims said. "The word is getting out, but we're finding that we have to get over the perception this will hurt a Marine's career."

In fact, Marines continue to serve just as any other Marine would. Even if a family member is enrolled in EFMP, the Marine can still be deployed.

"In the event a life and death situation comes up," said Sims, "we can take a look at deployment status, but nine times out of 10, if the Marine is in a unit that deploys, he's deploying too."

Even for single Marine parents, the consideration in EFMP is for the family member.

"Sponsors with a family member enrolled in EFMP need to have a family care plan," explained Sims. "Single Marine parents especially need to have a person who will be take care of the family member if the sponsor has to leave."

Once enrolled, sponsor duty station choices fall under one of four categories: Category I means the sponsor can be assigned anywhere; Category II pinpoints an overseas or continental U.S. assignment; Category III means no overseas assignments (however, the Marine can still do one year unaccompanied tour) and Category IV pinpoints assignment near a major Department of Defense medical facility, such as Tripler Army Medical Center here or Bethesda Naval Hospital in Maryland.

"Category IV may also be assigned to a major city, where the sponsor would be covered by CHAMPUS," said Sims.

Family members in the program are grouped in four categories as well. The categories don't necessarily correspond to each other, as in the servicemember's category I being the family member's category I.

Category I includes speech therapy and mild asthma. Category II is for those requiring physical therapy, moderate asthma and special educational needs; category III is for mental health, insulin dependent diabetes, HIV-positive and major depression. Category IV is reserved for those suffering from heart conditions, cancer, and AIDS.

Sims made it clear categories for family members are not for active duty Marines. EFMP is only for family members enrolled in the Defense Enrollment Eligibility Reporting System, she said.

Military sponsors aren't left in the lurch, however. Heather M. Hebdon, an Army spouse, developed Specialized Training of Military Parents, which encompasses issues of special education, rights, wills and guardianships, effective communication and resources and records. "We find that a good percentage of military families don't have or have access to their child's education record, which makes assimila-

# Design

From A-1

use their ideas, but parents did as well. "Kids can have a lot of good input," said Maj. Mark Gander. "They know what they like and many of their ideas can work."

Monday night, Segal talked to the community and gave them background on what his company was about. After a slide show of other super playgrounds, Segal presented a schematic drawing of the base's own playground. He stressed community involvement was the key to building it.

"For 20 years, we have been building playgrounds just using the community," said Segal. "You don't have to be a skilled craftsman to help, there is a job for everyone."

Even the students will take time out of their school day and help on the site. During a question and answer period, parents and kids asked Segal anything they had on their mind. Safety was a key issue.

"It's a great idea to have the kids give their ideas," said Sandy Tisdale, military spouse, "and he was able to use the ideas and keep the playground safe at the same time."

Refreshments were served and volunteer sign-up sheets were handed out at the completion of the meeting, and Segal again stressed community involvement.

"The playground is not just a playground, it is more than that," said Segal. "It really builds a community and those that don't get involved will miss out on something wonderful."

The playground is slated to begin construction Dec. 2 and will be completed on Dec. 6.

tion at a new base or community difficult," said Hebdon.

STOMP was established in 1985 and currently serves 22,000 families in all four services.

"Parents are more aware of what they need to do these days," Hebdon said, "but there's still a need for more of them to be informed."

"I did a study in 1986 looking at military families versus civilian families and how they integrated within their communities," Hebdon added. "Less than half the military families knew their rights about the educational system for children with disabilities. On average, it took 18 months for a military family to get hooked into the community support system, versus six months for civilians."

With the aid of programs like STOMP, Hebdon said assimilation time has come down to between six and eight months.

Hebdon's research includes personal experience.

"We were enrolled in the (Army version of the) program," she said. "I've seen it from a number of different perspectives — as advocate and as a parent. This program is something that is drastically needed, because it keeps the family together, saves the government money and ensures the family member will get whatever service he or she needs."

For more information on the EFMP, call Goodson at 257-3135.

**MEET SEXY SINGLES!**  
 Post ads FREE!  
 Listen to ads FREE!  
**808-596-7222**  
 use code: 8026  
18+ Customer Service 800-825-1598

**SANTELLAN & CHUNG**  
 A Law Firm  
**BANKRUPTCY \* DIVORCES \* CRIMINAL LAW**  
**PERSONAL INJURY \* DEBT COLLECTIONS**  
 Call for a FREE Consultation  
**532-9644**  
 810 Richards St., Ste. 829 Honolulu, Hawaii  
**BANKRUPTCY & FAMILY LAW**

**COUPLES IN CONFLICT**  
 INDIVIDUALS • COUPLES • GROUPS  
 • Communication Problems • Relationship Difficulties  
 • Adjustment To Military Life In Hawaii  
 • Coping with Separation & Deployment Issues  
 • Stress • Depression • Anxiety • Co-Dependency  
 • Self-Esteem • ACOA Issues • Eating Disorders  
*Years Of Experience Counseling Military Couples & Families*  
**PHYLLIS Z. LEVY**  
 MSW, LCSW  
 Psychotherapist Champus Accepted  
**839-7779**  
(5 Minutes from Tripler)  
 2850 Paa St. Suite 217

**LOSE WEIGHT NOW!**  
 Physician supervised medical treatment for easy weight loss with the help of medicines.  
 Phen/Fen and newly approved Dexfenfluramine.  
**Call Today 528-2227**

**MODELS WANTED**  
**POLYNESIAN AND ORIENTAL LOOKS**  
 OPEN CALL FOR LOCAL PRINT/TV COMMERCIALS • ALL AGES NEEDED  
**CALL 955-2271**  
**SusanPageModeling**  
 AGENCY & SCHOOL  
 Model Terri Heya

*Fashion Dream Shots*  
**SITTING SPECIAL**  
**\$20** per person  
(Expires 9/30/96)  
 You've Never Looked Better!  
**Photo Session Includes:**  
 • Makeover & Hairstyling  
 • Wraps & Accessory Changes  
 • High-Fashion  
 • Photography Sold in Packages  
**Make Your Appointment Today!**  
 Hickam Skills Development Center  
 335 Kuntz Ave., Hickam AFB  
**449-1568**  
 Gift Certificates Available.  
\*Portraits sold in a variety of sizes/dollar amounts and are back in about 2 weeks after proof review.

**USPA & IRA**  
**The Largest Independent Providers of Financial Programs to the Professional Military Family**  
**487-7222**  
 Serving Grades E-6 and Above  
©1996 Independent Research Agency for Life Insurance, Inc. (IRA) United Services Planning Association, Inc. (USPA)

**OCEAN CONCEPTS HAWAII**  
**PADI**  
**NOW OPEN! 5 STAR IDC CENTER**  
 • Your Military Scuba Headquarters  
 • Open Water Certification \$99.00  
 • Air  
 • Rentals  
 • Repairs  
 • Equipment Sales  
 • Instruction  
 • Daily Boat Charters  
 • Specializing in Divemaster and Instructor Training!  
 • Tusa Liberator \$69.00  
 • MWR  
 • DPP purchases  
 Open Monday - Friday 10 a.m. - 7 p.m. • Saturday & Sunday 8 a.m. - 5 p.m.  
 Marine Corps Base Hawaii, Kaneohe Bay Bldg. #107 • 254-7668  
 Camp Smith Bldg. #9 • 484-1238

**Trinity Christian School**  
 Announces **NEW**  
**2-, 3- and 5-Day Fall Preschool Programs**  
 2 Day/Week 3-year-olds - 8:30-11:30 OR 6:30 am-6 pm\*  
 3 Day/Week 3- & 4-year-olds - 8:30-11:30 OR 6:30 am-6 pm\*  
 5 Day/Week 3- & 4-year-olds - 8:00- 2:30\*  
 Along with our current 3- & 4-year-old 5 Day/Week - 6:30am-6:00pm  
 5 Day/Week - 8:30-11:30  
 \*Breakfast & Lunch Provided for 2:30 pm & 6:00 pm programs  
**Limited Fall Openings for Elementary K-6**  
 • Qualified Caring Staff  
 • Nurturing Christian Environment  
 • Developmental Approach to Learning  
 • Pre-Kindergarten Skills Emphasized  
 Please call for more information and a tour of our school  
 875 Auloua St., Kailua • 262-8501

**Weekends At Bellows Pau Hana Pub**  
**FREE Pupus & Reduced Drink Prices**  
 5-6 PM Social Hour Every Friday  
**Country Music & Dancing**  
 Fridays September 20 & 27  
**Karaoke with Karen**  
 Saturdays September 21 & 28  
**Entertainment Starts at 8:30**  
 Pool • Electronic Darts  
 Free Popcorn For Bar Patrons  
**NO COVER CHARGE!**

**King's Travel**  
**PHONE: 593-4481 OR 537-5534**  
 IMPERIAL PLAZA BLDG. 725 Kapiolani Blvd., C-103 TA266

WEST COAST	Los Angeles	Round Trip from	One Way from	First Class RT from
		\$239	\$180	\$606
	San Francisco	\$239	\$155	\$606

**MID WEST**  
 Austin Cedar Rapids Chicago Cincinnati Cleveland Columbus Dallas Dayton Des Moines Detroit Houston Indianapolis Kansas City Knoxville Little Rock Louisville Memphis Milwaukee Minneapolis Nashville New Orleans Oklahoma City Omaha San Antonio Sioux Falls Tulsa Wichita  
 CALL FOR MORE CITIES!  
 Round Trip from \$465 One Way from \$263 First Class RT from \$485 First Class RT from \$890

EAST COAST	Atlanta	Round Trip from	One Way from	First Class RT from	First Class RT from
		\$495	\$278	\$500	\$920

**BRING FRIENDS AND FAMILY TO HAWAII FOR VERY LOW FARES!**  
**CALL FOR DETAILS**  
Fares and packages are based on low season, midweek travel & double occupancy. Other restrictions may apply.  
 FARES SUBJECT TO CHANGE WITHOUT NOTICE



# Briefs

## TQL Nominations

Nominations are being accepted for the following courses in Total Quality Leadership training: **Team Skills and Concepts** - Class begins Tuesday and runs through Sept. 26. **Statistical Tools** - New class runs Oct. 9 and 10 at MCB Hawaii, TAVSC classroom one. Registration required for all classes. For more information, call the TQL office at 257-2130.

## TQL Nominations

To sign up for any of the following programs/classes, or for more information, call 254-4719 or 254-4965. **Hula Class** - Hula classes for children ages 4-12. The class meets every Saturday from 8:30-10:30 a.m. at the ASYMCA office in building 216. The fee is \$40 a month. **Women's Hula** - The classes will be held Monday evenings from 5:30 to 7:30 p.m. **Time for Tots** - This exercise program to enhance motor skills and coordination for children just starting to walk up to 3 years old meets Tuesdays and Thursdays from 8:45 - 9:15 a.m. **Lamaze** - Next class is Saturday through Sept. 28 from 9 a.m. to 1 p.m. **Fit for two** - These classes for pregnant women and new moms meet every Monday, Wednesday and Friday from 10 to 11 a.m. **Coupon club** - Karla Robinson

will teach all about coupons, rebates and forms. Meets the fourth Wednesday of each month from 6 to 8 p.m. **Hawaiian quilting** - The next class will be held Wednesday and continue through Nov. 20 from 6 to 8. **Belly dancing** - Classes are held Monday and Thursday from 7:30 to 9 p.m. Classes run continuously. Course fee is \$30 a month for both nights and \$15 a month for one night. **Dog obedience** - This course teaches dog handling techniques for dogs four months and older. The next class will be held every Sunday beginning Sunday through Oct. 13 from 4 to 5 p.m. **Playmorning** - A mobile playschool program with parent/child interaction. All times are from 9 to 11 a.m. Locations are as follows: Monday, behind the 7-Day Store; Tuesday, 2078 B, Champion Street; Wednesday, Cochran and Dodson area; Thursday, Cushman playground area. **Cake decorating** - The ASYMCA is looking for a cake decorating teacher. If interested please contact our office at 254-4719. **Food for families** - Call the ASYMCA if your family receives food stamps, WIC or if your food budget is stretched beyond its limits. Food for families works to bring food into your home for a small donation, shared shopping and child care. Call 254-4719. **Ballroom Dancing** - Classes will be held 7 - 9 p.m., Wednesday

through Oct. 30. Cost is \$45 per couple for the six-week class. Pre-registration is required. Learn the fox-trot, 2-step, waltz, rumba, cha-cha and swing. **Parents without Partners** - A non-profit, non-sectarian educational and social organization, devoted to the interest and welfare of the single parent and their children. You don't need custody of your child to be a member. Call the ASYMCA for upcoming activities. Orientation Oct. 3 at 7 p.m. Children welcome.

## Red Cross

The American Red Cross and the 21st Dental Company will be accepting applications for the Dental Assistance Program through Oct. 18. This will be an 11-week course in dental assistance in addition to 400 clinical hours to be completed over six months. Applications may be picked up at the American Red Cross office located in building 216, room 53. The office is open Monday through Friday from 8 a.m. to 4 p.m. For more information contact call 257-3150. Please call 257-3150 or 471-3155. After hours, weekends and holidays contact the American Red Cross Pearl Harbor Service Center at 471-3155. Pearl Harbor Office is open from 6 a.m. to midnight daily.

## FSC

The Family Service Center is offer-

ing the following courses: **PREP refresher** - If you attended the PREP course and would like to sharpen or revive your skills, call Gail for an appointment at 257-3655. **Conquer your Stress** - This three-part series will be held Tuesdays from 3:30 to 5 p.m. Classes are held at the FSC and you may start at any class. The series includes: Sept. 3, Understanding Emotion; Sept. 17, Building Self-confidence and Sept. 24, Stress management. Call for reservations and information at 257-3655. **Women's Orientation Group** - This education and support group is for women whose partners attend one of the men's domestic violence groups or have unresolved issues because of a prior abusive relationship. The women's group will explore issues and material presented in the men's groups and is held every Thursday from 2 to 4 p.m. Call Melody or Debbie for location and more information at 257-3655. **Parenting Classes** - Parenting education and support classes are held Tuesdays from 6 to 8 p.m.

## NMCRS

Would you like to learn office skills? The Navy/Marine Corps Relief Society is looking for volunteers. Childcare will be provided. This provides an opportunity to learn about the military pay system and household budgeting. The NMCRS is located in building 216 and operates

from 8:30 a.m. to 2:30 p.m. Monday through Friday. For more information, call 254-1327.

## TAMP

The following programs are being offered by the Transition Assistance Management Program Office. **VA Representative Q&A Session** - A representative will be at the TAMP Office Friday from 8:20 a.m. to 3 p.m. to answer questions about home loans, education benefits, disability claims, etc. **Budget Awareness Workshop** - This workshop provides a practical approach on how to budget your money. The class will be held at the Bachelor Officer's Quarters conference room Friday from 9 to 11 a.m. **FBI "Special Agent" Recruitment Brief** - Information on the current efforts of the Federal Bureau of Investigation and recruitment procedures will be available Wednesday from 9 to 11 a.m. in the Bachelor Officer's Quarters. Registration is required.

## Base Library

The Marine Corps Base Hawaii Kaneohe Bay library is looking for someone to paint a mural in the library. Stop by the library for more details. Don't forget StoryTime is every Thursday from 10 to 11 a.m. StoryTime is stories and crafts geared toward preschool children. For more information, call 254-7624.

**Auto Accident-Rust Repair?**  
Quality Service at Competitive Prices  
Insurance Claims Welcomed

**RPMS AUTO BODY & PAINTING, INC.**  
Towing & Loaners Available

46-168 Malina Place, Kaneohe  
(Behind Windward Nissan)

Ask for: Ron or Madison Spotts 247-7767 • 262-2673  
"Personalized Service for Every Customer" Serving Oahu Since 1971

**DRY CLEAN EXPRESS**  
...Quality Dry Cleaning

**GRAND OPENING SPECIALS**

CAMMIE SET  
Light Starch \$6.25  
Heavy Starch \$6.75

CIVILIAN DRY CLEANING  
**\$2.50 OFF**  
on orders of \$25.00 or more  
expires 10/15/96

MARINE CORPS BASE HAWAII  
Camp Smith 488-1695 • Kaneohe, Bldg. 1090 254-3392

**saeng's**  
Thai Cuisine

- new seafood & vegetarian dishes
- nightly fresh island fish
- happy hour 5-6:30pm
- known for healthy cuisine & friendly service since 1987

Lunch: Mon-Fri 11am-2:30pm Dinner: Nightly 5-9:30  
Catering • Plate Lunches Next to Post Office • 315 Hahani St. Kailua  
Eat In or Take Out Present this ad for 10% discount 263-9727 or 9728

**Mind, Medicine & Health**

**A MEDITATION CLASS**

Based on a series of 6 classes and discussions on stress reduction, meditation instruction/practice and psychoneuroimmunology, as seen on the Bill Moyers special: Mind and Body Healing.

Starting October 1 on Tuesday evenings • 6:30 to 8 p.m.  
\$40 for the 6-week class or \$8 per class  
Located at the Boettcher Estate • Kalama Beach Park on Kailua Beach  
248 N. Kalaheo Avenue, Kailua

Dr. Dean Nelson has been an instructor of mindfulness/awareness meditation for 14 years and a practitioner of meditation for 22 years. Dr. Nelson was the previous resident director of Shambhala Training in Minneapolis and is the founder of WindHorse HealthCare.

WindHorse Health Care synthesizes acupuncture, network chiropractic, craniosacral, nutrition counseling and herbology into a single treatment protocol to provide a true holistic approach. Dr. Dean Nelson holds dual degrees and licenses in Chinese Medicine (acupuncture) and Chiropractic.

**WindHorse Health Care**  
For further information, call 261-5566

If It Doesn't Say Jiffy Lube,  
It Just Isn't Jiffy Lube.

**Signature SERVICE**  
NO APPOINTMENT NECESSARY

- Change your oil with Pennzoil (Your choice of up to 5 quarts of Pennzoil 30w, 40w, 10w-30, and 10w-40)
- Install a new oil filter.
- Lubricate the chassis.
- Check and fill transmission fluid.
- Check and fill differential fluid.
- Check and fill brake fluid.
- Check and fill power steering fluid.
- Check and fill window washer fluid.
- Check and fill battery.
- Check the air filter, breather element and PCV valve.
- Check the wiper blades.
- Inflate tires to proper pressure.
- Vacuum the interior.
- Wash your exterior windows.

Performance. Protection. Quality.™  
"Hawaii's Favorite Oil Change"

**NOW THREE LOCATIONS**

**UNIVERSITY**  
2550 S. BERETANIA • NEXT TO BURGER KING • PHONE 951-5433

**DOWNTOWN**  
1489 Punchbowl St. • Off H-1 Fwy. • Phone 599-5433

**PEARL KAI SHOPPING CENTER**  
98-199 Kamehameha Hwy. • Across from Pearlridge • Phone 488-5433

**NEW HOURS:**  
MONDAY TO FRIDAY 7 am to 6 pm  
SATURDAY 7 am to 5 pm • SUNDAY 8 am to 4 pm

© Jiffy Lube International, Inc. 1996

**BRUCE WILLIS**

THERE ARE TWO SIDES TO EVERY WAR.  
AND JOHN SMITH IS ON BOTH OF THEM.

**LAST MAN STANDING**

NEW LINE CINEMA PRESENTS AN ARTHUR SARKISSIAN PRODUCTION LONE WOLF FILM BRUCE WILLIS "LAST MAN STANDING" CHRISTOPHER WALKEN ALEXANDRA POWERS  
DAVID PATRICK KELLEY KARINA LOMBARO AND BRUCE DEAN DAN MADRE GARY COOPER GARY WISNER FREEMAN DAVIES LLOYD AHORN  
RALPH SINGLETON SARA RIGHER MICHAEL DE LUCA WALTER HILL ARTHUR SARKISSIAN RYUZO KIKUSHIMA AKIRA KUROSAWA WALTER HILL

RESTRICTED UNDER 17 REQUIRES ACCOMPANIMENT PARENT OR SOCIETY SUPERVISOR  
DOLBY DIGITAL  
NEW LINE CINEMA  
© 1996 New Line Productions, Inc. All Rights Reserved.

**STARTS SEPTEMBER 20TH AT THEATRES EVERYWHERE**



Whether you're communicating across the state or around the globe, only AT&T can deliver the world's most reliable, innovative, and secure network.

**Launch Your Communications Strategy into the Future with AT&T**

Our cutting-edge solutions have kept the U.S. military on the front lines of telecommunications

for decades. And we stand ready to propel you into the future.

AT&T's global network carries more traffic for more customers to more places than any other network in the world. Why trust your mission-critical applications to any one else? Decades of reliability ... unsurpassed technology ... and industry-leading customer service. That's AT&T's commitment to communications anytime, anywhere, for any mission.

Visit Our Web site at: <http://www.att.com/gov/>



**Government Markets**  
*We Serve the People Who Serve the People*



Cpl. Michael Wiener

This statue of King Kamehameha is just one of the many things to see on the island tour.

## Guide brings island excursion to life

Cpl. Michael Wiener  
*Staff writer*

Island newcomers can get a taste of Oahu through a tour set up by the Family Service Center here. The tour bus leaves base in the morning, and after a trip around the island, arrives back on base in the afternoon.

Liebert O'Sullivan has been the tour guide on these tours for four years. Born on Molokai and raised on Oahu, the 66-year-old is very educated on Hawaii and its history.

"I've always tried to learn everything I could about the islands," said O'Sullivan. "If someone asked me a question about something and I didn't know, I wouldn't be doing my job very well."

Throughout the tour, O'Sullivan not only points out the places of interest, but gives the history behind it as well. For instance, at the first stop, the Pali Lookout, O'Sullivan explained how King Kamehameha and his army pushed their enemies over the cliff in conquest of the island.

"I decided I wanted to be a guide after I went on a tour five

years ago and the guide knew nothing at all about the history and culture of Hawaii," said O'Sullivan.

Because he has lived on the island for so long and had learned so much about it, O'Sullivan knows the more trivial facts as well.

"A lot of people wonder ask me why Tripler is painted pink. In 1948, the Damen family donated the land to the military for a hospital," explained O'Sullivan. "The only stipulation was that the hospital had to be painted pink, and if it was ever a different color, the land would be returned."

"He's a great guide," said Lt. Kirk Marsten, island newcomer. "He is very interesting and I think he hit all the highlights of the island."

The tour included Honolulu, Waikiki and Diamondhead. Then after a stop at Hickam Headquarters and lunch at Burger King, O'Sullivan and his "disciples" headed for the Dole Plantation and the North Shore. After meandering their way down the windward side of Oahu, the tour arrived home with the new-arrivals having gained a new-found knowledge

of the island.

"I thought it was a good tour," said Deborah Holley, military spouse. "I saw many things I probably never would have seen and learned a lot of information about this place."

The monthly tour is free, and snacks and sodas are also provided at no charge. Sign-up is handled by FSC, 257-1931 building 216, and with only 44 seats, reservations should be made early, O'Sullivan said.



Cpl. Michael Wiener

Liebert O'Sullivan points out places interest at the Pali lookout.



Ravings of a Mad Man

SSgt. Stephen Gude

### First year impressions

I've been here a little more than a year now, and I am happy to report I haven't been thrown in jail — yet, as my captain keeps reminding me.

My initial impressions of Hawaii, and particularly Oahu, since I haven't been to any of the other islands, haven't changed from when I was here in 1990 for RIMPAC-90.

### Scenic Beauty

There's no way you can miss the gorgeous scenery. I'm a big fan of mountains and greenery, and here, the Koolau range is particularly compelling. The first time I drove along the windward side of the Likelike Highway, I almost ran off the road, because I couldn't stop staring at the mountains.

It's even more imposing when you're standing outside looking at it. I see just how insignificant I really am, next to these sentinels.

From my desk in my office, I can look out of the window and see the gap in the mountains where Japanese planes flew to attack Pearl Harbor after they attacked here. I'm a big fan of history, too, and seeing spots like that always makes my mind wander. I wonder what the pilots were thinking as they flew their planes through the gap, and what the people who saw the attack were thinking.

Reminds me of Okinawa

To more modern thoughts, Oahu has struck me as a place much like Okinawa, especially walking through Waikiki. It's not just that many of the tourists are Japanese, but the weather's a lot like Okinawa, and there are lots of signs in Japanese, too. The countryside reminds me of Okinawa, too, as do the prices at stores.

### The people

The people here are friendly — but let me qualify that statement. People from the mainland who have transplanted themselves here seem to feel anyone who doesn't know as much about Hawaii as they do is an ignorant cur. People who were born here but whose parents are from other countries call themselves Hawaiian, but really, can they? Are they Hawaiian as in "native, with deep family roots" or as in "I was born here, so I am Hawaiian," although besides knowing a few phrases, they speak not one iota of the Hawaiian language.

Would someone pound me on the head with a koa wood club if I express the feeling that the word "aloha" wasn't used by native Hawaiians as a catch-all phrase, such as "Thank You," "Hello," "Good bye," and "he hit a home run?" Maybe I'm wrong, but it just doesn't seem that way. Perhaps it's a sort of Americanization of a place that shouldn't be Americanized.

### The animals

What are those disgusting creatures that crawl out of the grass every time I wash my car or mow the lawn? They look like roaches but they're not as quick, and they don't hesitate to crawl on people. At least the egrets eat them. I enjoy watching it happen — nature in full effect. If I had a video camera, I'd film some scenes for the Discovery Channel.

I've also found out I'm not the only husband here who has to kill geckos because the wife is scared of them. Other Marines here have told me the same thing, despite the local saying that geckos bring good luck. Ladies, for the good fortune of us all, show a little aloha spirit and let the geckos live.

## Men's varsity basketball team looks to new season, more fan support

Sgt. Michael Terrell  
*Special to the Hawaii Marine*

The Hawaii Marines varsity basketball team is made up of top-level players who compete against other military service teams and college teams here. With several players returning from last year's team, head coach Michael Terrell can afford to let players have an influence on what happens on the court.

"If a player has an idea or complaint, they can go to one of the captains and then come to me or my staff," said Terrell. "If it's a good idea, we'll use it."

This style marks a change for Terrell, who was a player on last year's squad until a knee injury sidelined him. He was asked to fill in the head coach's role when the

former coach was sent on temporary duty.

"I volunteered to coach fifth graders while I was in college," he said. "I was even a player/coach on a few intramural teams, but I never coached on this level."

"It was a challenge," Terrell continued. "I had to prove to myself as well as the team I could handle the job. It's like when you get promoted, your peers become your subordinates, and you have to 'show and prove.' I don't have to do that this year."

Especially not with players like Walter Moore and Kevin Spivey. Moore is a former All-Marine who plays point and shooting guard.

"I feel comfortable when Moore has the ball in his hands at the point," Terrell said. "But I've got other guys who can run the point,



SSgt. Stephen Gude

With forwards like Curtis Brooks (dunking) ready to slam and jam inside the paint, the Hawaii Marine varsity basketball team is poised for a successful season.

too, which will allow me to use Moore primarily as a scoring threat this year. He's one of the best shooters on the team."

The 6'-6" Spivey, who played Division I college ball at Oregon State, is the most versatile player Terrell has.

"He can do it all," said Terrell. "Inside, outside, facing the basket, back to the basket, he can put the ball on the floor and hit the jump shot." Spivey can play all positions, but will be used primarily at forward and center.

Last year's leading scorer, forward Wayne Bryant, returns.

"Doc was injured at the beginning of the season last year," Terrell explained, but he finished strong and was selected to the all-tournament team. Last year, Bryant split his time between center and forward, but with a new crop of big men, like 6'-6" Kenny Nelson and 6'-8" center Victor Collins, Bryant can concentrate on playing forward.

Nelson's strength under the goal gives the team the big-man presence it lacked.

"He plays like Rick Mahorn," said Terrell. "He makes you pay down low, on both ends of the floor. Nelson gives the team that 'bad boy' image, and yeah, we can use that. Opponents need to know we won't get banged up down low."

Collins, who was a MarForPac Regional Tournament All-

Tournament Team member and selected to attend the All-Marine camp last year, is currently deployed. That's why assistant coaches Robert Clarke and Robert Miller suggested to Terrell to keep 20 players on the active roster.

Good thing there are no salary-cap restrictions in varsity ball. "You always have someone out in the field, on duty, in school or on temporary duty somewhere else," Clarke said. "This way, we'll always be sure to have at least 15 players and we won't have to teach a new player our system."

Last year's squad suffered from lack of fan support, and Terrell and his squad is seeking more unit support as well, especially for the MarForPac Regional Tournament, in Okinawa in February.

"We want to bring the gold back to Hawaii," said Terrell. "Hawaii had a string of championships in the early 90s. We can't get back to that level without support from everyone. With understanding regarding unit missions, I hope all the players can be released to spend the 15 days necessary to take the best team to Japan. If this happens, I think we'll see excellent results."

The varsity team's first challenge is a pre-season tournament at Pearl Harbor Sept. 27-29. The season begins in the middle of October.



SSgt. Stephen Gude

6'-6" forward-center Kevin Spivey (with ball) returns as one of the Hawaii Marine varsity basketball team's key starters.

# Hot chow, no waiting

## Marines at PTA eat hot breakfasts, dinners

Sgt. William Poff  
Staff writer

**P**OHAKULOA TRAINING AREA, Hawaii — Marines here will not have to endure a constant bombardment of the meals in the little brown packages known as Meals Ready to Eat, but will have their hunger sated with hot chow, regardless of the training location in the field.

The messing facilities here will support nearly 2,300 Marines daily throughout their deployment to the Big Island.

"This is the most extensive messing operation I've ever seen at PTA," said GySgt. John Negron, acting regimental mess chief. "We will be supporting 27 different ranges by vatting hot chow to the field and this is the first time a full-blown mess has been constructed. We'll be vatting hot chow to other field messes as well."

"Every piece of mess gear in 3d Marine Regiment is here," Negron added. "We have over 220 containers for juices and hot food to be delivered to the various training sites."

Once the vatting process begins a row of vat cans awaiting pickup can stretch more than 100 yards outside the messhall at PTA's base camp, said Negron.

"The units in the field get everything a Marine receives in the base camp messhall," he said. "Each meal will have the standard meats, vegetables, starches, fruits, juice and salad that we normally serve on our 10-day cycle."

Such an extensive operation takes immense preparation to adequately feed everyone, according to Negron.

"Our bakers who prepare the baked goods for the next day begin working in the kitchens at 1 a.m.," said Negron. "The cooks arrive at 3 a.m. to prepare breakfast and at 5:30 a.m. the first vat cans will be picked up for units in the field. Right after we secure from breakfast, preparation for evening chow is started. Since lunch is not served, everyone is required to eat an MRE for that meal."

A fully functional field mess was set up at "Pu'u O," and because of the prehistoric look of the area it was dubbed "Jurassic Park Dining Hall," said Negron.

"The biggest challenge of operating a mess site in the field is sanitation standards," said Negron. "Bad sanitation in a field mess is a quick way to bring a battalion to a screeching halt."

"To ensure cleanliness, a corpsman inspects all food preparation activities every day," Negron continued. "The corpsman also ensures the cooks and messmen bathe and use proper hygiene whenever they are handling food or fresh water in the messing and preparation area."

Even with the lack of the modern convenience messmen have at facilities back at MCB Hawaii, their objective is quality service.

"It's easy to take for granted the convenience of the gear we have in the rear but here, we have to work with what we bring," said LCpl. Tony J. Dahl, cook, 3d Battalion, 3d Marines. "Even with the challenges of getting quality meals prepared here, I like the leadership and responsibility it takes to get the job done. I'm just doing my job, ensuring everyone gets fed the correct portions, and supervising the cooks and messmen from start to finish, ensuring each meal is prepared correctly." Knowing their next meal will be a hot and tasty



Sgt. William Poff

Marines deployed to Pohakuloa Training Area enjoy two hot meals a day, whether it's a sit-down meal in a messing facility or brought to them in vats.

entree from the kitchens at Jurassic Park Dining Facility, Marines here don't have to look upon their morning and evening meals with the drudgery of tearing open the tough brown bag.

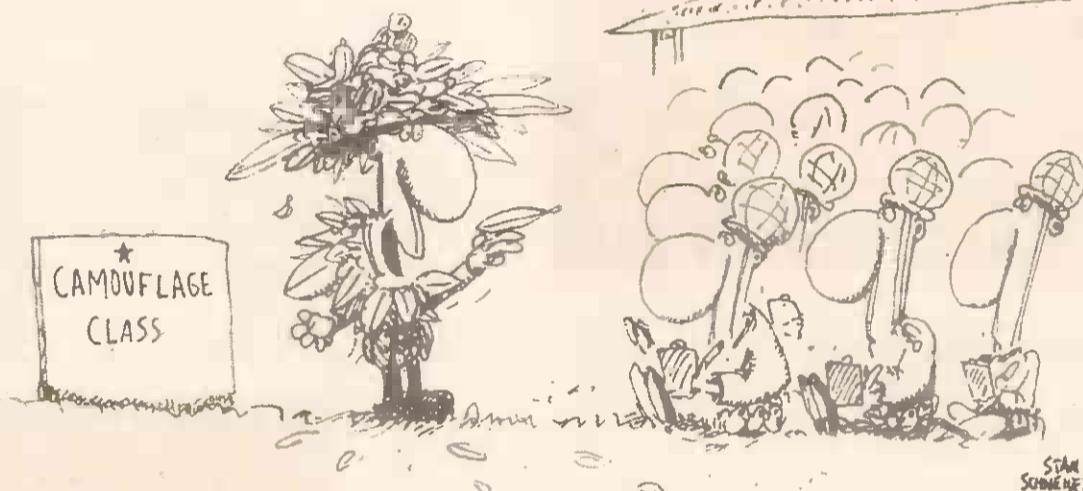
## Chaplain's Corner

Lt. Mark Hendricks  
Base Chaplain's Office

I grew up with a little song that said "This little light of mine, I'm gonna let it shine... hide it under a bushel, no! I'm gonna let it shine..." Whether you realize it or not, you have the ability to light your world. As I am writing this, the Olympics are in full swing, so if you'll pardon me, one more Olympic story.

One of the highlights for me was the opening ceremony and the lighting of the Olympic flame that has burned brightly throughout the Olympic games. What was fascinating is that the flame traveled around the world before it reached Atlanta and Mohammed Ali passed it on one final time. Many people carried the flame as a tremendous symbol of unity and combined effort. It just so happens that one of my very good friends was chosen to carry the flame in Waco, Tex. As he spoke of his experience, he said it was the thrill of a lifetime, something he will always remember. He said, however, that the carrying of the torch pales in comparison to the opportunity he has to enlighten the lives of people with a message of eternal hope. Throughout the Olympics, the flame has burned. When a terrorist bomb exploded in Centennial Park, the flame continued to burn. When injuries occurred, the flame continued to burn.

We too have the ability and often the opportunities to light our world. There is a scripture verse that says "Let your light shine..." Unfortunately there are a good number of people around whose lives are very dark, their pain very great and hopelessness abounds. We may be, and furthermore, must be agents of help and hope. Share a word of encouragement with them, let them know you care and take a moment to help. There may even be explosive tragedies all around and the good news is that in the darkness, the light shines the brightest. Let your light shine.



"Don't forget, Marines, camouflage not only makes good concealment, but a great salad."

# DISCOUNT

SAVE 50% & MORE ON QUALITY NAME BRAND CLOTHES!

COMPARE OUR PRICES & SAVE!

Also ... Save Big On • Electronics TV/VCRs • Stereos • HP Printers Toys Housewares • A Little Bit Of Everything

SOCKS	T-SHIRTS	BOXER SHORTS	MEN'S BRIEFS	WOMEN'S BRIEFS
50¢ pr.	from \$1.50	\$3 ea.	75¢ ea.	NOW 99¢ ea.

Open Mon-Sat 10am-6pm & Sun 11am-4pm

Located next to Nanko's in Kaneohe Corner of Kahuhipa & Alaloa Street 236-7009

## CARRIERS SEEK VOLUNTARY PAYMENT

Beginning September 20th through September 29th, your Hawaii Marine newspaper carrier will be visiting you to ask for a suggested payment of \$1.30 for the four-weeks' delivery service from September 20th through October 17th.

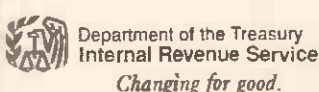
If you enjoy reading the Hawaii Marine and delivery service is satisfactory, your \$1.30 voluntary payment will reward your carrier for a job well done.

Suggested payments provide earnings for our enterprising young carriers and make possible supportive functions by the circulation department.

Upon payment, your carrier will give you a receipt that may be used for one discounted classified ad in all of our Sun Press and Military newspapers during the dates shown on the receipt.

## Even EZ-er than 1040EZ.

Introducing TeleFile from the IRS. If you are single and filed Form 1040EZ last year, you can file your tax return in ten minutes by phone. Anytime. Check your tax booklet for information.



**Pink Pussy Cat**  
EXOTIC DANCERS AND LOTS OF NEW GIRLS!  
NEW Picture Models  
Continuous Show & Deejay • No Cover  
Join us every nite except Sunday  
4 stages/Dance Floor • Open 6:30pm-4:00am  
983 Dillingham Blvd. 848-5665

**NEW Hair Straightened PERMANENTLY** in one treatment!  
**FREE Strand Test** Call for a 10-minute appointment to test this revolutionary process on your hair!  
Available in Hawaii only by Lucrecia at:  
**LUCRECIA'S BEAUTY SALON • 261-5380**  
Call TODAY for appointment.

**90 CHANNELS \$39.99**  
Movies/Sports/Pay Per View  
We deliver more—we cost less!

**AlphaStar** System Includes Satellite Dish, Receiver & Remote \$499<sup>99</sup>  
DIGITAL TELEVISION **FINANCING AVAILABLE**  
**Satellite TV Hawaii, Inc.**  
Visit Our Showroom at the Pali Palms • 970 N. Kalaniana'oli Hwy. Suite C-102 in Kaliua  
Next to the Yum Yum Tree Restaurant & The Aikahi Park Shopping Center **254-7055**

**TOUR RIDE YOUR WAY**  
**NEW PRICES!**  
**Vanpool Hawaii**  
**\$50<sup>00</sup>**  
a month for a comfortable and reliable way to and from work  
**596-VANS**

**BRUCE WILLIS**  
THERE ARE TWO SIDES TO EVERY WAR, AND JOHN SMITH IS ON BOTH OF THEM.

**LAST MAN**

**STANDING**

STARTS FRIDAY, SEPTEMBER 20<sup>TH</sup>

CONSOLIDATED WAIKIKI 1	CONSOLIDATED KAPOLEI 16	CONSOLIDATED KAM DRIVE-IN
CONSOLIDATED KOKO MARINA TWIN	CONSOLIDATED MILILANI 5	CONSOLIDATED AIKAHI TWIN
WALLACE RESTAURANT ROW	WALLACE NANAKULI CINEMAS	CONSOLIDATED PEARLWEST 12
WALLACE ENCHANTED LAKE	SEE DIRECTORY FOR SHOWTIMES / NO PASSES	

**www.lastman.com**

# Tickets

The MWR Ticket Office offers tickets and information on how to get them at special military rates. The office also takes reservations for events and attractions around the island. Call the Entertainment Hotline at 254-7563 or stop by the Marine Corps Exchange for information and reservations. The office is located at building 1090 and is open Monday through Saturday 9 a.m. to 5 p.m. and Holidays 9 a.m. to 2 p.m.

This week's offerings include:

### Movie Tickets

Discount movie tickets are available for all Consolidated and Wallace Theaters. Stop by ITT and pick up tickets.

### Aloha Diners books

A limited supply remains of the Aloha Diners books. Discounts include buy one get one free coupons at many restaurants and night clubs around the island. Cost of the books has been reduced to \$7 each.

### Star of Honolulu

The Star is offering a reduced rate for their Oahu Coastal Cruise Standard Cruise from now to Sept. 30. The cruise travels from the Kewalo Basin to Diamond Head turns back and traverses the coast towards Pearl Harbor, past the Utah and Arizona Memorials. The cost of the three and a half hour cruise is \$17.50 for adults with children under the age of 11 traveling free with a

paying adult. The Star sails daily from 8:30 a.m. to noon. Upgraded packages include breakfast and lunch for an additional \$12.25 per adult and \$7.25 per child.

### Starlet Cruises

The Starlet is offering reasonably priced dinner cruises through Sept. 30. The cost is \$29.50. Enjoy a steak and fish dinner served hot and fresh at your table. Stop by ITT for reservations. Offer ends Sept. 30.

### Polynesian Cultural Center

Stop by ITT to pick up your Kama'aina Military Card. This card entitles the holder to visit the Polynesian Cultural Center at lower than Kama'aina rates. Cost for adults is \$13.95 and children is \$11.95. This cost permits patrons to visit the seven villages, the canoe pageant and various tours of the surrounding area. This price also includes a spectacular evening show.

### Oktoberfest '96

Celebrate an annual tradition of fun at the Hale Koa Hotel in the Banyan Tree "Brauhaus" Wednesday, Sept. 26 and 29 from 5 to 11 p.m. Tickets are \$6 per person. A wide selection of authentic German food and traditional drinks will be available for purchase. Large groups are welcome.

### University of Hawaii Football

Rainbow Warrior football tickets are available from the ITT office. Kick off for all games is 5:07 p.m. Home games are as follows: Boise State, Saturday; Colorado

State, Oct. 5; UNLV, Oct. 19; San Jose State, Nov. 9; BYU, Nov. 16; and Wisconsin, Nov. 30. Tickets are \$16.50 for sideline seats, and \$14.50 for end zone seating.

### Waimea Valley

Visit one of Oahu's most scenic natural places in this 1.8 acre nature park on the North Shore. Visitors can enjoy magnificent tropical gardens, ancient historical sites and colorful wildlife. Take an open-air mini bus to the top of a scenic waterfall, then go on a guided tour back through 30 botanical collections. Tickets are \$9.50 for adults, and \$7 for children age 6-12.

### Ultrazone

Upon entering the Ultrazone Arena, you are transported to a futuristic landscape, where enemies and teammates seem to materialize out of thin air. With a laser beam as your weapon, come enjoy the adrenaline rush as you or your team capture the opponent's bases. Tickets are \$6 per person.

### Star and Magic of Polynesia

Two magical experiences combined: the Star of Honolulu sunset diner cruise and the incredible illusions of a great magician. Drift gently into a Hawaiian sunset, enjoy steak and seafood, entertainment and dancing. Cruises depart daily at 5 p.m.; magic shows begin at 8:30 p.m. ITT special price is \$57 for adults and \$49.50 for children.

## Ads

### Autos

1966 VW Karmann Ghia - Made in Europe, needs little work, \$1,000 or best offer, call 254-4506.

1978 VW Cabriolet - With parts car, 2 barrel Weber 1776, high performance, complete to finish, \$1,200, call 254-0455.

1981 Honda Accord - Rough body, runs great, \$150, call 254-9339.

1984 Nissan - Hatchback, automatic, runs great, \$500, call 254-9339.

1985 Honda CRX - New clutch and tune up, runs and looks great, good stereo system, call 254-2277.

1986 Isuzu Pickup - 4-speed, has rust on body but runs great, \$600, call 254-9339.

1986 Isuzu Trooper II - 5-speed, needs carburetor work and two new tires, great shape, \$1,500, call 254-9339, ask for Iris.

### Miscellaneous

Condo - For rent, 2/2, top floor in Kailua, two parking,

pool, no pets, \$1,100 available now, call Barb at 261-1828.

1995 19' McGregor Powersailer - Fully loaded, beautiful, must see, paid \$20,000, sacrifice at \$12,000, call 254-9339.

Home Furnishings - Blue rug, country braided, \$50; oak desk with hutch, \$100; new exercise bike, \$50; white computer desk, \$50, call 254-9339.

30-gallon Terrarium - Great for chameleons or small animals, comes with top screen and light, \$100, call 254-3033.

Baby Stroller - double size, front and back, good condition, \$50, call Kevin at 254-1809.

Weslo Cardioglide - with computer monitor, excellent condition, one year old, \$100, contact Kevin at 254-1809.

Men's Riding Boots - Like new, size 9 and one-half, pulls and jack included, \$200, call 254-0455.

Dive Gear - Call 247-7106.

To place an ad in the Hawaii Marine stop by the Hawaii Marine office in building 216 to fill out an ad form. Electronic submissions can be addressed to HawaiiMarine@CG@MCBH KBAY. The ad submission must contain a home phone number and a work number. Submissions should be received before noon on Thursday for the following week's publication.

## Sports Briefs

### Basketball

We've waited long enough, now let's play some basketball at the Summer Slam basketball tournament Sept. 27-29 at Pearl Harbor. The tournament features open and intramural divisions (including military, church, park, recreation and 30 and over teams), with team prizes for first through third places and individual prizes for first place teams. The entry fee for the double elimination tournament is \$175, and the entry deadline and coaches meeting is Friday. For more information, call Jason Enrique at 672-0035.

### Fun Run

Register now for the 10th annual McGruff Fun Run Oct. 13 at Kapiolani Park. Runners, walkers, strollers and

others are invited for a day of fun for everyone. There will be an eight- and three-kilometer course. The 8K course begins at 6:30 from Monserrat Avenue, and the 3K course begins on Kalakaua Avenue. Registration fee for one race is \$17 for adults and children over 12 and \$14 for children 12 and under; \$20 for adults and \$17 for children for both courses if registered by Sept. 30. For more information, call Bill Ogawa at 255-4479.

### Golf Tournament

The Aloha chapter of the Army Aviation Association of America will host a golf tournament Sept. 30 at Leilehua Golf Course. The event is open to the public and will begin with a shotgun start at noon. The cost is \$45 per person. Prizes will be awarded to the first through third place teams. For more information, call CWO Gragg at 646-1210.

**"If you're serious about finding a relationship, you must call me."**  
Stop looking in singles bars and in health clubs. Stop wasting precious time on one mob scene after another. People come to me because they know my record of success. Don't put off that phone call. It could lead to the most important introduction of your life. Call today for a confidential appointment.

**COMPUTATE • 536-3804**

Lisa Collin  
Date Counselor 1188 Bishop St., Ste. 611 Downtown Honolulu

**DIVORCE**  
24 hours • Flat Fee  
Trust An Attorney Who Cares  
**Steve Cedillos**  
1088 Bishop #810 • 536-5242

**BANKRUPTCY**

VALUABLE COUPON  
**Save 20% OFF**  
OF YOUR MEAL TICKET  
With this Coupon. Not Good With Any Other Offer. Expires 10/1/96

**Military Discount** from 4pm-Closing **10% OFF** w/ valid military ID Any day without coupon

**Bob's Big Boy**  
Family Restaurant  
Offers also good at our sister restaurant Walkiki Parkside Cafe at 1850 Ala Moana Blvd. 2828 Pao St. 833-3440 • Open 6am-11pm

**HAWAII HANA** TA2302  
1481 S. KING ST. #125 • CALL 951-8448

Interisland Coupons  
'38 for Aloha, '40 for Hawaiian

	O/W	R/T	NASHVILLE	O/W	R/T
ALBUQUERQUE	209	329	NEW ORLEANS	279	409
ATLANTA	289	449	NEW YORK/DCA	293	469
BIRMINGHAM	289	469	NORFOLK	293	469
BOSTON	293	449	OMAHA	259	419
CHARLOTTE	293	469	ORLANDO	293	479
CHICAGO	275	449	PHILADELPHIA	293	469
CINCINNATI	279	449	PHOENIX	199	309
CLEVELAND	279	449	PORTLAND, OR	179	279
DALLAS/FT. WORTH	279	449	SALT LAKE CITY	209	279
DENVER	229	369	SAN ANTONIO	219	359
DETROIT	279	449	SAN DIEGO	215	319
HOUSTON	279	449	SEATTLE	179	269
INDIANAPOLIS	279	449	SHREVEPORT	279	469
KANSAS CITY	219	449	SFO	149	219
LAX	149	219	TAMPA	293	479
MEMPHIS	279	459			
MINNEAPOLIS/ST. PAUL	279	449			

Some Restrictions May Apply PLUS TAX

**PAGER Clearance!**  
maxon  
SND 15  
**39.95** + tax

**FREE ACTIVATION**  
**FIRST 3 MONTHS SERVICE FREE**

\*One year service agreement required While Supplies Last

Our Service starts at only \$7.95 per month.  
Voice mail starts at only \$3.95 per month.

**HAWAII'S PAGER OUTLET**  
**ISLAND PAGE**  
**676-7722**

Located at Waikale Center, next to Computer City

**MARINE MOVES!**

**HAWAII INTERNATIONAL MOVERS, INC.**

Career advancement?  
Military Transfer?  
CALL YOUR TRANSPORTATION OFFICER AND REQUEST THE BEST!  
"Great Job. Best delivery crew in 14 years in the Marine Corps!" -Bonnie F.

**682-2425**  
HAWAII INTERNATIONAL MOVERS, INC.  
91-120 HANUA STREET • KAPOLEI



Let Mom know you're staying warm and dry.

**1-800-COLLECT**  
SAVE UP TO 44%

For long-distance calls. Savings based on a 3-minute AT&T operator-dialed interstate call.

# Why do I need the SMP?

Renee Valdov  
Single Marine Program Coordinator

Single Marine Program, what the heck is it and what can they do for me that I can't do on my own? Why do I need to go to the SMP Center when I have everything I need right here in my room? Single Marine Program, what do they do, find dates for us or something?

These are some of the questions I get asked a lot. The plain and simple fact is I can answer all three at once: the Single Marine Program is everything you want to make it. It's a place to be with others and meet new people. These people do not necessarily mean others in the military. We do a lot of things, including getting together with the community.



Valdov

You see, the SMP is a program the participants take ownership of. The focus and vision of the program overall depend on those who are active — and even the not-so-active — participants. I think the most important thing to remember is the SMP and staff work for the single Marines and Sailors aboard MCB Hawaii K-Bay and Camp Smith.

Is there a thought you've had on how a group could get together and have a fund-raiser, whether it's for a program or a worthy cause? Have you heard of a program in the com-



munity in need of volunteers? Do you want to do more with your time than merely exist? My friends, the SMP Center is where you need to go. I welcome all of your ideas and suggestions.

I want everyone to be sure to come out to the Camp Smith SMP/Rec Center Sept. 27 for a Country and Western barbecue and dance. The music and entertainment will be provided by a great friend of mine, Charlie "The Ghost Rider" Garrett. Keep your eyes and ears open for details.

Don't forget the SMP Center at K-Bay is open seven days a week. Movie nights are still Tuesday and Friday at 7 p.m., so come on out and enjoy a great new video release and some freshly popped popcorn. For more information, call 254-759.

## Religion

MCB Hawaii Kaneohe Bay Chapel  
Catholic Weekday Mass 11:45 a.m. (Monday-Friday)  
Saturday Mass 6 p.m.  
Sunday Mass 7:30 a.m.  
Sunday Mass 9:30 a.m.  
Protestant Liturgical Communion 8:30 a.m. (Sunday)  
Sunday School 9:30 - 10:30 a.m. (Mokapu Elem.)  
Adult Bible Study 9:30-10:30 a.m. (Sunday at Mokapu Elem.)  
Protestant Worship 11 a.m. (Sunday)  
Promise Keepers 11:30 a.m. - 1 p.m. (Friday)  
Single Adults 6 p.m. (Sunday)  
(call 254-6028 for information)  
(call 254-0455 for information)  
Gospel of Holiness Fellowship  
Sunday School 11 a.m. (Boondocker)  
Sunday Worship 1 p.m. (Base Chapel)  
Bible Study 7 p.m. (Tuesday at the Base Chapel)  
Choir rehearsal 7-p.m. (Friday at Base Chapel)  
For more information about MCB Hawaii Kaneohe Bay Base Chapel religious services, call 257-3552.  
MCB Hawaii Camp H.M. Smith Chapel  
Catholic Mass 6:30 a.m. daily and 8 a.m. (Sunday)  
Aloha Jewish Chapel at Naval Base Pearl Harbor  
Shabbat Service 7:30 p.m. (Friday)  
For more information about Jewish services, call 471-3971.

## The Madman's Football Picks

SSgt. Michael Balmer defeated the eight-person pool, losing only two games. MarForPac MWR's Kathleen O'Connor picked Indy to whip Dallas, which tied her second place with Sgt. Nicholas Stitzer. Remember — the tie breaker is used only if someone is tied on Sunday. Whoever wins the most games on Sunday wins. Predict the number of points both teams will score in your tie-breaker game.

- Arizona at New Orleans: Both teams are equally sorry. **NEW ORLEANS**
- Denver at Kansas City: I've got to go with **KANSAS CITY**
- Green Bay at Minnesota: The Pack is awesome. **GREEN BAY**
- Jacksonville at New England: **NEW ENGLAND**
- N.Y. Giants at N.Y. Jets: This better not be on TV. **N.Y. JETS**
- San Francisco at Carolina: Is Carolina for real? Not. **SAN FRANCISCO**
- Seattle at Tampa Bay: Is this really a game? **TAMPA BAY**
- Washington at St. Louis: Two up-and-coming teams. **ST. LOUIS**
- Chicago at Detroit: No matter which way I go, I'll lose. **DETROIT**
- Dallas at Buffalo: Unfortunately, **DALLAS**
- San Diego at Oakland: This one's going to be a war. **OAKLAND**
- Philadelphia at Atlanta: Hello, Falcons? The season's started! It's not preseason anymore! Hello? Hello?? Despite my worries, I've got to go with my hometown squad in an upset. **ATLANTA**
- Tie Breaker: Miami at Indianapolis: Obviously, Dolphins players fear the wrath of Jimmy Johnson. **MIAMI**, 46 points

(Madman's picks in bold)

Standings:

SSgt. Michael Balmer, HQBn.	10	3	(1)
Sgt. Nicholas Stitzer, 1/12	10	3	
GS-7 Kathleen O'Connor, MarForPac	10	3	
JO1 Buchanan/PH3 Bichen, USN	9	4	
LCpl. Paul D. Smith/MCAF	9	4	
Cpl. Mathew Miller, MarForPac	8	5	
Madman	8	5	
LCpl. James Gettings, HQBn.	7	6	



Michael Balmer



Cpl. Michael Wiener

### MARFORPAC Band plays the sound of Aloha spirit

The Marine Forces Pacific Band performed in the 50th Anniversary Aloha Festivals Parade Sept. 14 in downtown Waikiki. The Aloha festival takes place over six weeks with many events all over Oahu. The annual celebration is in honor of traditions and heritage of the Hawaiian culture.

**MONEY MONEY MONEY**

**NEW DONORS**  
(anyone who has not donated for at least 6 months)

**\$25** for first donation  
With This Coupon.

Receive up to  
**\$140** a month  
by donating plasma

For More Information  
Call **836-0647**

Sera-Tec Biologicals  
3179 Koapaka St.  
Mon-Fri Noon till 6pm • Closed Sat. & Sun.

**Contact Lenses & Family Vision Care**

Wear comfortable, problem-free contact lenses home on your first visit.

**TRICARE & TRICARE PRIME**  
Accepted for Dependent Eye Examinations

- Soft & Disposable Lenses
- Guaranteed Lowest Price!
- Free Contact Lens Consultations

"QUALITY THAT'S AFFORDABLE"

**DR. CHARLES DEAN, OPTOMETRIST**

**261-9735** 139 Hekili St.  
Kailua

NCOA Certified

HMSA UNIONS & MOST INSURANCES ACCEPTED

**SUZIE'S ADULT CENTERS**

Aiea Shopping Center 2nd Level  
486-3103

We Have the **LARGEST SELECTION** of Adult Products in Hawaii!

**50% to 70% OFF PURCHASE OF TOP NAME RENTALS**

**RENT \* SELL \* PREVIEW**  
OVER 2,000 TITLES TO CHOOSE FROM

We carry . . . leather, lingerie, magazines, lotions, dolls, adult products to fill any fantasy!!!  
Hundreds of different adult toys and novelties!

**25¢ Private Viewing Booths**

Friendly & Helpful Clerks!

**Food 52** what's new?...

Keep watching ... it's a surprise!

**The RITZ Collections**  
A COMPLETE WEDDING & FORMAL SERVICE

"Prices Discounted For the Military"

**Quality Checklist!**

- Informal & Formal Brides
- Formal Gowns
- Veils, Headpieces, Undergarments
- Military Balls
- Pageant & Sequin Gowns
- Hawaiian Weddings
- Hair & Make-Up
- Petite, Juniors, Misses & Large Sizes
- Day Service & All Brands Available
- Personalized Service
- Serving Brides Formal Wear For 60 Years
- Bridesmaids & Flower Girls
- Tuxedos & Suit Rental
- Gloves, Shoes
- Uniforms
- Invitations
- Photography
- Alterations

**1400 Kapiolani Blvd.**  
**973-3810**  
Across Ala Moana Center  
• Lots of Parking • Hours 9-9 M-Sat • Sun 10-6

**BACK TO SCHOOL SALE**  
NEC EXEC

**ONLY \$39.95\***

MESSAGE MAKER  
**PAGER ONE**

\* Required Quarterly Service \$27, plus \$9 deposit

**PAGER ONE**  
845-1111 238 Sand Island Access Road  
Offer good thru 9/28/96 or while supplies last

**This Week New Arrival Special**

**DOLLAR DAYS DISCOUNT WAREHOUSE**

**BASIC FEATURE**  
90 min Running time **\$5.99**

**2 hrs LONG ADULT MOVIE** **\$6.99**

**4 hrs LONG ADULT MOVIE** **\$7.99**

**ORIENT U.S. ADULT TAPE** **\$8.99**

923-6699 4420 Lawehana St. #2 (BACK OF COSTCO-SALT LAKE)  
MON - SAT 9-7 SUN 9-5

MWR Offerings

Kathy Hayes
Strike... Spare... Gutterball?
Attention all youths! The K-Bay Youth Program is looking for a few good bowlers...

mation, call the E-Club at 254-7660.
Monday nights are rocking in the SNCO Rocker Room. Cheer on a favorite team with friends...

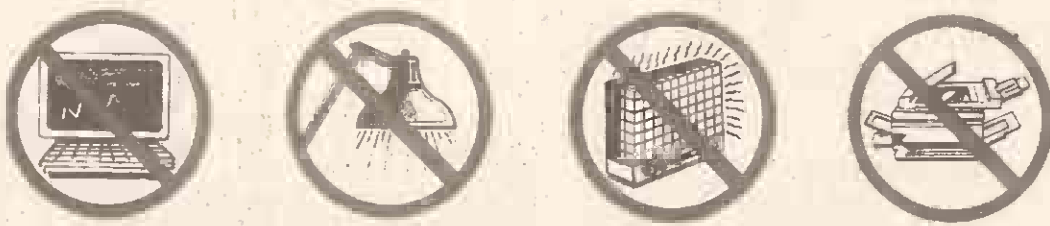
Officers' Host Night
Officers bring your right-hand staff NCO to the Koa Bar and dining room Friday, from 4:30 to 6:30 p.m. and enjoy free pupus.

Meet a Rising Young Star
Join the Celebrate Hawaii promotion by meeting the emerging star of Hawaiian Slack, key 'Ikaiki Brown. At 13 years old, 'Ikaiki has already recorded a compact disc showing off his slack key artistry.

Catch Football Fever
Every Monday night is football madness at the Enlisted Club and Rocker Room. Watch the action on big screen TV at the E-Club.

KILL • A • WATT

IT'S EVERYONE'S RESPONSIBILITY
TURN OFF WHEN NOT IN USE



Movies

All movies shown at the Base Theater, building 219, begin at 7:15 p.m., unless otherwise noted. Movies are subject to change due to circumstances beyond the theater's control.

"The Adventures of Pinocchio" (Action) "G": 96 minutes, plays Friday at 7:15 p.m. Starring Martin Landau as a lonely craftsman who create a wooden puppet which becomes real.

pet which becomes real. Pinocchio is played by Jonathon Taylor Thomas.

"Multiplicity" (Comedy) "PG-13": 115 minutes, plays Saturday at 7:15 p.m. Starring Michael Keaton and Andie MacDowell.

"Chain Reaction" (Thriller) "PG-13": 107 minutes, plays Sunday at 7:15 p.m. Starring Keanu Reeves as a young scientist who has been framed as a spy after a gigantic explosion levels his laboratory.

PALI PALMS DENTAL CENTER
DENTAL SERVICES

General Dentistry • Preventative and Restorative Dentistry
Cosmetic and Esthetic Procedures

INSURANCE ACCEPTED: HDS, HMSA, Delta Dental Services (Military), Hawaii Dental Health Plan

Dr. Alan M. Yagawa, DMD
Office 254-6477
970 N. Kalaheo Ave., A-108
Kailua, Hawaii 96734

Dr. Derek Ichimura, DMD
Office 254-6694
970 N. Kalaheo Ave., A-108
Kailua, Hawaii 96734

PRESTIGE TRAVEL UNLIMITED, INC.
1513 YOUNG ST., SUITE #102 PH 945-7400
OPEN 7 DAYS A WEEK
DISNEYLAND PACKAGE \$337
LAS VEGAS PACKAGE \$329
TULSA CHICAGO WICHITA ST. LOUIS CINCINNATI SIOUX FALLS INDIANAPOLIS OKLAHOMA CITY

ISLAND TINT n' DETAIL
SUMMER SPECIAL
TINT REMOVAL \$25
AUTO TINT \$25
EXTERIOR WASH & WAX \$25
RUST PROOF \$99
INTERIOR SHAMPOO \$40
PAINT SEALANT \$99

THE CLASSIFIED INDEX

Telephone Service 235-5881
Counter Service 45-525 Luluku Rd. Kaneohe
Deadlines: Line Ads due by 12 Noon - Tuesday
Class Display Ads due by 4:00 p.m. Friday
CANCELLATIONS & CORRECTIONS due by 12 Noon - Mon.

Classifieds
Sun Press 1 wk. \$3.12 per line
MidWeek 1 wk. \$5.58 per line
COMBO 1 wk. \$6.90 per line
ASK ABOUT OUR 3-WEEKS-FOR-2 COMBO SPECIAL

LENOX RESOURCES INC.
RECYCLE FOR CASH!
ALUMINUM CANS - 34c
COUPON IS WORTH ADDITIONAL 2c/lb on Aluminum cans

DIVORCE
Serving Oahu Since 1977
\$125.00
595-2533
Staff Attorney Gene Bridges
A Public Service Project

ST. JUDE
PLEASE USE CAUTION
10 Cemetery Plots
EASY MONEY PAWN SHOP

15 Announcements
ADVERTISING STANDARDS
BETTER BUSINESS BUREAU

CLASSIFIED INDEX table with columns: HEADING, CLASS, HEADING, CLASS. Includes categories like Announcements, Jobs Wanted, Real Estate, etc.

HOME & APARTMENT GUIDE

Equal Housing Opportunity
74 Apts. Partly Furnished
83 Houses Partly Furnished
84 Housesitting
88 Rooms For Rent
114 Real Estate For Sale





**ONE STAR**  
SPECIAL  
BANK & IN-HOUSE FINANCING

'86 CAMARO RS \$2,495  
'89 LINCOLN LSC \$3,695  
'89 CRX SI \$3,995

WE HAVE ACCESS TO OVER 200 REPO AUTOS

'90 CIVIC \$3,995  
'92 MERCEDES 600SEL \$4,495  
'92 RANGER SUPER CAB \$6,995  
'91 TOYOTA MR2 \$7,695  
'95 NISSAN XE \$13,495  
'94 EXPLORER XLT \$14,995

530 PAIEA ST. 834-0808  
HY 111 AIRPORT

**SCHUMAN CARRIAGE**  
AUTO & TRUCK CLEARING CENTER

**FALL SEASONAL SAVINGS**

'87 AUDI 4000S 4 Dr. Full Power, A/C, Cass, Alloy, Low Mi, Sporty! (FTE-553) \$2,795

'91 ESCORT #1 Selling Car in the World! 2 Dr. Only 15K Miles (ECW-442) \$3,995

'89 NISSAN SENTRA 2 Dr. 5 Spd, A/C, AM/FM Cass, Won't Last! (FJS-024) \$3,995

'89 VW JETTA Auto, A/C, Sunroof, Low Mil (FIT-994) \$4,995

'93 FORD RANGER XLT LONGBED 4.0 V6, P/V, P/L, Cass, Bedliner, Mags! (GFB-352) MUST SEE! OFFER \$7,995

'92 AEROSTAR XL 7 Pass, Auto, A/C, Clean! (EXU-153) MUST SELL! \$7,995

'95 JEEP WRANGLER 4X4 SE Auto, 4.0 Six, 11K Mil (GBR-687) MUST SEE! \$8,995

'92 CHEVY ASTRO CARGO VAN Auto, A/C, V6, Extra Clean, Low Mil (GGD-857) \$8,995

'89 CHEVY BLAZER 350 V8 Auto A/C Silverado Full Pwr. (ETR728) \$9,995

'91 CADILLAC SEVILLE Excellent Shape White/White Priced to Sell (GFD510) \$10,995

'93 ACCORD LX 4 Dr. Fully Loaded, Low Mi, Warranty! (EWT-205) \$14,995

**Leasing, Special Financing & Military Financing Available**

60 Help Wanted Male/Female

**JANITOR NEEDED**  
Hickam Thrift Shop. 8-10 hrs. per wk., flexible times. Call 421-1285 or Stop in the Thrift Shop for an application.

**MANAGER & ASS'T. MGR.**  
See our ad under Retail, American Nutrition Superstore.

**MODELS WANTED**  
Open Call. All looks/ages, local/national. TV comm./print. Call 955-2271, Susan Page Modeling.

**NEED \$ WANT FUN JOB?**  
Become a Petra Fashions Consultant. Earn \$25+/hr. Free \$600 kit. 499-1622.

**P/T CREW MEMBERS**  
for Kaneohe-Based Sailing School Ship Toie Mour.

**LAUNCH DRIVERS**  
for ship's outboard boat to make shuttle runs in Kaneohe Bay three 6-hr. shifts per wk. between 8am to 8pm.

**BO'S N'S MATES**  
to help maintain paint/rigging onboard. three 6-hr. shifts per wk. between 8am to 8pm. \$8.25/per hr. + lunch. Call Marimed Foundation, 261-8881.

**PHONE RECEPTIONIST**, P/T, 5 to 9 pm., possible weekends hours. Apply in person at 2845 N. Nimitz Hwy., Honolulu.

**AMERICAN NUTRITION SUPERSTORE**  
Management & customer service opportunities available.

An American Nutrition Superstore is opening soon. We are currently recruiting the following:

Store Manager  
Assistant Manager  
Nutrition degree or applicable background. Management experience a plus.

Sales Associates  
Interest in health and nutrition. Retail experience a plus.

Employee Discounts

An exciting retail opportunity with a rapidly growing nutritional company. Products include body-building formulas, vitamins, minerals, natural cosmetics, and herbs. Very successful stores already at Ft. Bragg, Ft. Campbell, Ft. Knox, Andrews AFB, Bolling AFB, and the Navy. Seeking outgoing, enthusiastic people with an interest in health and nutrition.

Fax your resume immediately to:  
Pat Weber  
(212) 645-6983 (fax)  
(212) 645-2448 (phone)

American Nutrition Superstore was recently featured in the Exchange Magazine.

**SALES REPS P/T-F/T**, good commission, own hours, car necessary. College students, housewives, retired. Digital page, 568-6143.

**SALESPERSON: P/T**, Jap./English speaking pref. Hourly + comm. Self-motivated, friendly. Honolulu/Waialae areas. Call 583-8889.

**CORNER DILLINGHAM & MIDDLE STREET**  
**832-7545**  
All prices plus tax, Lic. & \$189 Doc fee. Subject to prior sale.

**120 Home Furnishings**

**\*WANTED\***  
Used furniture in very good condition. Dressers, beds, bookcases, etc.

Paradise Furniture  
235-8056

50% OFF: KOA rockers, chairs, boxes, etc. by master. S. I. K. 283-8392.

DRESSERS, beds, bunk beds, desks, dining sets, sofas, yr. old. 282-4440.

MIKE'S USED BEDS  
twins, \$60 to \$80, delivery avail. 851-7701.

SPANISH carved wood din. table, 6 chairs, hutch, outfit, bar, coffee table & 2 end tables w/linen white marble. 625-0454.

**122 Travel**

FLYING CARPET Travel. Best fares anywhere. We deliver. Hurry! 739-0194.

**123 Moving/Storage**

AMERICAN INT. CARGO. FLY CAR TO LAX, \$1175. FASTER THAN BOAT AND SAFER. FOR MORE INFO, COME TO 111 KEEHI PL., AT HONOLULU AIRPORT. 1-808-836-0656 OR 1-800-642-5121.

**129 Stereo & Video**

SPEAKER BOXES Home or auto. Custom-made to your specs. 834-7922.

131 Bicycle Sales

CANNONDALE TANDEM road bike w/STI shift, Ti B-B, V-brakes & 700 C wheels. Hardly used, \$2200/obo. 287-1810 pgr.

CANNONDALE, \$130. Fuji, \$80. Centurian, \$200. Rd. Bikes. Raleigh, \$150. Min. Bikes. 258-7752.

**132 Computers**

UPGRADE 386/486 computer to a new Pentium, \$450. Pager 289-2044.

**141 Video Taping**

"FILMS TRANSFERRED" TO-VIDEO, Econ Photo Call 239-4295.

**144 Musical Instruments**

BACKUP SINGERS for new country band. Gigs avail. 521-3398, Steve.

BALDWIN PIANO upright, good shape, \$1000/OBO. 429-3180.

**147 Sporting Goods**

WINDSURF BOARD \$325 422-9487.

**148 Water Sports Equipment**

SCUBA, BCD, regulator, weights, belt, planner, cert. bks., \$500. 283-1380.

**151 Pets/Everything**

AKC GOLDEN Retriever puppies, 6 wks., \$400. AKC female, 15 mos., \$350. Call 274-3292.

AKC ROTTWEILERS champ lines, pedigree, OSA. \$850-\$800. 682-3936.

**... I CAN GRANT YOU 3 WISHES ...**

**1 A Great New Or Used Car**

**2 Repair Damaged Credit**  
Bankruptcy, Repo, Divorce, Collections...

**3 FREE Instant Approval By Phone or Fax**

**CALL LEE AT HONDA WINDWARD 247-8544**  
OR FAX FORM TO 235-6522

NAME: \_\_\_\_\_  
ADDRESS: \_\_\_\_\_  
CITY: \_\_\_\_\_ ZIP: \_\_\_\_\_  
HOME PHONE: \_\_\_\_\_ WORK PHONE: \_\_\_\_\_  
SOCIAL SECURITY# \_\_\_\_\_  
TYPE OF CAR INTERESTED IN: \_\_\_\_\_  
CURRENTLY EMPLOYED? YES \_\_\_ NO \_\_\_ WHERE \_\_\_\_\_  
SIGNATURE X \_\_\_\_\_

I understand that my signature authorizes Honda Windward and the banks to check my credit with credit reporting agencies, and to verify employment. I certify that this information is correct.

**FAX THIS APPLICATION 235-6522**

**HONDA WINDWARD 247-8544**  
45-671 Kam Hwy., Kaneohe

**McCallister's Beds & Furniture SALE!**

Mahogany Chests, Bookcases Available

USED BED SETS  
TWIN set... \$189.95  
DOUBLE set... \$229.95  
QUEEN set... \$279.95  
KING set... \$449.95

UNFINISHED CHESTS  
20" Wide... \$49.95  
24" Wide... \$59.95

UNFINISHED BOOKCASES  
\$69-\$132

2333 Alohao Place  
Just Off South Hono Rd  
841-4251

**SFK Cures Credit Problems!**

•BAD CREDIT •NO CREDIT  
•BANKRUPTCY  
•REPOSILIENS •DIVORCE  
•OWE TOO MUCH ON CAR

Call Scott Brown  
**Special Finance Extraordinaire**  
**532-1416 Honolulu**

**171 Motorcycles & Scooters**

'93 GSXR 600 18K mi., red/white, Immac, #333 South Seas Kawasaki Waihipu 671-6711

'95 HARLEY XLH 883 #82. '94 XLH 883 Custom. #83. '95 XLH 1200, #333 South Seas Kawasaki Waihipu 671-6711

GET THERE FAST! '96 ZXR #K13. \$8,999 plus \$75 doc, tax & lic. 831-2617

GET THERE FAST! '96 ZXR #K13. \$8,999 plus \$75 doc, tax & lic. 831-2600

SPEED DEMONI '91 FZR 1000 #P3750. \$5,995 plus \$75 doc, tax & lic. 831-2600

USED HARLEY! '94 Heritage Classic, #P1318, \$14,995 + \$75 doc, tax & lic. 831-2617

**171 Motorcycles & Scooters**

'91 ZRT750 clean, standard, low insurance, retro. #5385. South Seas Kawasaki Waihipu 671-6711

**PLUEGER HONDA COLOSSAL USED CAR CLEARANCE NOW THRU MONDAY!**

'86 FORD MUSTANG \$2,995\*  
Auto, A/C, Special of the Week Lic.#FJ1 559 was \$4,995

'89 DODGE SHADOW \$3,495\*  
Great Car, Great Price. Hurry Lic.#FZ1 745 was \$5,995

'85 BUICK PARK AVENUE WGN \$3,850\*  
A/C, V-6, P/W Lic.#FDW 205 was \$5,995

'87 OLDS CUTLASS SUPREME \$4,995\*  
V-6, Loaded, Low Miles Lic.#FWZ 353 was \$7,995

'93 FORD FESTIVA \$4,995\*  
Great Commuter Car Lic.#FDS 444 was \$6,995

'87 BUICK PARK AVENUE \$5,995\*  
Luxury Ride, A/C, Priced to Sell Lic.#FZG 949 was \$8,995

'87 CHEVY SILVERADO P/U \$5,995\*  
Tu-Tone Paint, Auto, Runs Great Lic.#EWS 165 was \$6,995

'89 HONDA CRX \$5,995\*  
Sharp Car, Sharp Price Lic.#DOLLARS was \$8,995

'89 PONTIAC GRAND PRIX SE \$6,850\*  
Low Miles, Luxury Ride Lic.#FSC 363 was \$9,995

'86 HONDA PRELUDE SI \$6,995\*  
Loaded, A/C, Sunroof Lic.#FNT 296 was \$9,995

'87 HONDA ACCORD LX 4DR \$6,995\*  
Auto, A/C, Nice Car Lic.#FPU 463 was \$9,995

'90 DODGE CARAVAN \$6,995\*  
Cargo Van, V-6, A/C, Hurry Lic.#GBJ 984 was \$9,995

'91 NISSAN 240SX \$7,995\*  
Auto, A/C, Extra Nice Lic.#EAG 925 was \$10,995

'93 MERCURY TRACER 4DR \$7,995\*  
Auto, A/C, Only 15,000 Miles Lic.#FBW 219 was \$9,995

'89 CHEVY CAMARO IROC-Z \$8,995\*  
V-8, Loaded, A/C Lic.#FVW 869 was \$11,995

'91 HONDA CIVIC 3DR \$8,995\*  
A/C, Sharp Lic.#EOR 607 was \$10,995

'94 CHEVY CAVALIER 4DR \$8,995\*  
Auto, A/C, P/W, Low Miles Lic.#FEE 493 was \$10,995

'89 HONDA ACCORD COUPE \$9,995\*  
Body Kit, A/C, Tint Lic.#GDA 486 was \$12,995

'93 FORD MUSTANG LX \$9,995\*  
Auto, A/C, P/W, Extra Nice Lic.#FSP 346 was \$11,995

'93 NISSAN SENTRA 2DR \$9,995\*  
Auto, A/C, Only 29,000 Miles Lic.#EYC 861 was \$12,995

'90 HONDA ACCORD EX 4DR \$10,950\*  
Auto, All Options Lic.#FRX 855 was \$12,995

'91 ACURA INTEGRA LS \$10,950\*  
White, Spoiler, Sunroof, Must See Lic.#GED 777 was \$12,995

'92 MAZDA MIATA CONVERT \$10,995\*  
A/C, Sharp Lic.#ETE 060 was \$12,995

'92 HONDA ACCORD LX 4DR \$12,995\*  
Auto, A/C, White Lic.#GJ 688 was \$14,995

'94 MITSUBISHI ECLIPSE GS \$12,995\*  
Loaded, Like New Lic.#G8E 337 was \$15,995

'92 HONDA ACCORD EX 4DR \$13,995\*  
Luxury Ride, Hurry Lic.#ESP 360 was \$15,995

'94 ACURA INTEGRA \$14,500\*  
White, 5 Spd., Like New Lic.#DOW 817 was \$15,995

'93 HONDA ACCORD EX 4DR \$15,850\*  
Auto, Low Miles, Must See Lic.#ETW 430 was \$18,995

'93 HONDA ACCORD \$15,995\*  
Special Ed., Leather, Low Mi Lic.#FBW 042 was \$16,995

'93 HONDA ACCORD EX CPE \$15,995\*  
Auto, Wheels, Low Miles Lic.#G721 was \$17,995

'94 HONDA ACCORD LX 4DR \$15,995\*  
5 Spd., Sharp Lic.#FV 259 was \$17,995

'95 HONDA ACCORD LX 4DR \$16,995\*  
Auto, Like New, Save Lic.#FXT 480 was \$18,995

**PLUEGER HONDA THE NATION'S FIRST HONDA DEALER**  
777 Ala Moana Blvd. • Honolulu, HI 96813  
**528-7200**  
HOURS: DAILY 9AM to 9PM

**CREDIT PROBLEMS?**  
Ask for our Special Financing Dept.

\*Cash prices + tax, license & \$195 doc fee. All offers on approved credit. Vehicles subject to prior sale. Offers not valid with other discounts or rebates. Offers end 9-23-96.

**Dodge**

'91 SHADOW conv't., 5 spd., maroon, low mi., \$5200/OBO. 283-4347.

'93 COLT A/C, Cass., FD2812, \$7,995. Cutter Mitsubishi 94-149 Farrington Hwy. 871-2626

**Ford**

'91 Probe white, auto., P/W, P/L trunk, 16000, 37K mi., \$6900. 233-6000

'92 T-BIRD auto, A/C, must see! FDJ314, only \$4,999.

'91 Probe white, auto., P/W, P/L trunk, 16000, 37K mi., \$6900. 233-6000

'92 CROWN VIC S/W V-6, auto, P/S, AM/FM, pwr. pkg., EAT586, \$495. Cutter Ford/Izuu 94-149 Farrington Hwy. 871-2626

'96 TAURUS S/W, auto, good cond. Must sell. \$2500/OBO. 254-1820.

'87 BRONCO II Blue, fully loaded, 8900 Miles, \$4800/OBO. 536-2050.

'89 TEMPO 4 dr., loaded, low mi., low pymts. EZ8006, only \$1,999.

**Bulck**

'86 CENTURY LIMITED auto, all pwr., A/C, must sell. \$1650/OBO. 247-0157.

**Cadillac**

'89 SEDAN DeVILLE loaded, excl. cond., 1 owner, 56K mi., \$10,000/OBO. 399-8534.

**Chrysler**

'89 LeBARON conv't., turbo, excl. cond., 53K mi., \$5500/OBO. Call 254-8964.

**Ford**

'90 TAURUS A/C, loaded, a must see! FDJ314, only \$4,999.

'91 Probe white, auto., P/W, P/L trunk, 16000, 37K mi., \$6900. 233-6000

'92 T-BIRD auto, A/C, must see! FDJ314, only \$4,999.

'93 Probe, black beauty, loaded, 5 spd., 37000/OBO. Call 294-6399.

**Geo**

'90 STORM A/C, cass. stereo, dark blue, rune excl. \$4400/OBO. 247-7031.

**Honda**

'90 ESCORT GT 4 cyl., 5 spd., P/S, AM/FM cass. alloy, EJ2571, \$995. Cutter Ford/Izuu 94-149 Farrington Hwy. 871-2626

'85 CIVIC SEI 4 dr. 5 spd., P/S, AM/FM CD pwr. pkg. FSP677, \$1,995. Cutter Ford/Izuu 94-149 Farrington Hwy. 871-2626

60 Help Wanted Male/Female

**JANITOR NEEDED**  
Hickam Thrift Shop. 8-10 hrs. per wk., flexible times. Call 421-1285 or Stop in the Thrift Shop for an application.

**MANAGER & ASS'T. MGR.**  
See our ad under Retail, American Nutrition Superstore.

**MODELS WANTED**  
Open Call. All looks/ages, local/national. TV comm./print. Call 955-2271, Susan Page Modeling.

**NEED \$ WANT FUN JOB?**  
Become a Petra Fashions Consultant. Earn \$25+/hr. Free \$600 kit. 499-1622.

**P/T CREW MEMBERS**  
for Kaneohe-Based Sailing School Ship Toie Mour.

**LAUNCH DRIVERS**  
for ship's outboard boat to make shuttle runs in Kaneohe Bay three 6-hr. shifts per wk. between 8am to 8pm.

**BO'S N'S MATES**  
to help maintain paint/rigging onboard. three 6-hr. shifts per wk. between 8am to 8pm. \$8.25/per hr. + lunch. Call Marimed Foundation, 261-8881.

**PHONE RECEPTIONIST**, P/T, 5 to 9 pm., possible weekends hours. Apply in person at 2845 N. Nimitz Hwy., Honolulu.

**AMERICAN NUTRITION SUPERSTORE**  
Management & customer service opportunities available.

An American Nutrition Superstore is opening soon. We are currently recruiting the following:

Store Manager  
Assistant Manager  
Nutrition degree or applicable background. Management experience a plus.

Sales Associates  
Interest in health and nutrition. Retail experience a plus.

Employee Discounts

An exciting retail opportunity with a rapidly growing nutritional company. Products include body-building formulas, vitamins, minerals, natural cosmetics, and herbs. Very successful stores already at Ft. Bragg, Ft. Campbell, Ft. Knox, Andrews AFB, Bolling AFB, and the Navy. Seeking outgoing, enthusiastic people with an interest in health and nutrition.

Fax your resume immediately to:  
Pat Weber  
(212) 645-6983 (fax)  
(212) 645-2448 (phone)

American Nutrition Superstore was recently featured in the Exchange Magazine.

**SALES REPS P/T-F/T**, good commission, own hours, car necessary. College students, housewives, retired. Digital page, 568-6143.

**SALESPERSON: P/T**, Jap./English speaking pref. Hourly + comm. Self-motivated, friendly. Honolulu/Waialae areas. Call 583-8889.

**61 Salespeople Wanted**

**TELEMARKETERS** Be your own boss! Wk. at hm. \$200/\$350/wk. 398-0711.

**62 Domestic Help Wanted**

WANTED a mature FT nanny to care for a 4- & 3-yr.-old at our Schofield Barracks home. Exp. refs. req'd. nonsmoker. Call Angela, 824-0565.

**64 Domestic Jobs Wanted**

CHILD CARE Kaneohe, Lic. F/T-M-F. 18 mo. + Auntie Nani. 236-1761.

CHILD CARE M-F. 1-2 children. Pm. Rides by apt. Karin, 259-5284.

LIC. CARE HOME with a/c, h. air, h. air, ambulatory, special diet. Private room. 622-2803.

LIC. CHILD CARE Meals. Outdoot play. Lots of TLC. FIT-P/T avail. 247-1063.

LIC. child-care provider, Ewa Beach. Infant/toddler FIT Mon.-Fri. 898-4053.

LOVING EXP. MOM will care for 1-2 children. All ages. Call Marie, 281-5229.

MILANI AREA. Before/after school & res. Refs. Trans. avail. 823-4283.

MILANI Child Care. Before & after school, trans. provided. 923-4283.

MILANI PATCH certified, lic. child care. Fenced yard. Pre-School environment. 825-5301

MOTHER OF 2 Will baby-sit 1-2 children, your home or mine. 487-1282.

WILL BABY-SIT 1-2 children. Halalwa, safe, caring. \$25/00. 637-8468.

WILL-BABY SIT 1 child, 1 yr./older. M-F. 8-5 in my Kaneohe home. 235-6507.

# THE AUTO GIANT OFFERS USED CARS AT ANY PRICE

**PLUS: A 30 DAY NO CHARGE EXCHANGE**  
IF YOU'RE NOT TOTALLY SATISFIED WITH THE CAR WITHIN 30 DAYS, BRING IT BACK.

**ALL THESE VEHICLES**  
**\$995.00**  
TO TWENTY NINE NINETY FIVE  
OR \$95 DOWN FROM \$27.64 A MO.

**ALL THESE VEHICLES**  
**\$3,995.00**  
TO FORTY NINE NINETY FIVE  
OR \$95 DOWN FROM \$110.97 A MO.

**ALL THESE VEHICLES**  
**\$5,995.00**  
TO SIXTY NINE NINETY FIVE  
OR \$95 DOWN FROM \$124.90 A MO.

**ALL THESE VEHICLES**  
**\$7,995.00**  
TO EIGHTY NINE NINETY FIVE  
OR \$95 DOWN FROM \$166.36 A MO.

- '90 DODGE OMNI #87197A/HSR653
- '86 PONTIAC GRAND AM #67146B/FSN309
- '83 OLDS CUTLASS #F2282A/GEK284
- '87 CHEVY CELEBRITY #21420A/CGZ286
- '87 HONDA CIVIC #21802A/FRA260
- '90 NISSAN SENTRA #20993A/FSB113
- '79 BMW B3 #21327B/ETN395
- '91 FORD MUSTANG #67025B
- '89 NISSAN SENTRA #20805A/FRN250
- '88 FORD THUNDERBIRD #87317A/FSZ941

- '91 MITSUBISHI GALANT #21268A/EDS383
- '83 VW RABBIT #8733A/EWY101
- '86 HONDA CIVIC #21443A/FEF726
- '89 DODGE COLT #87287/FPG293
- '87 HONDA ACCORD #20923A/FRX382
- '92 DODGE SHADOW #21197A/EJD467
- '88 VW JETTA #21187A/FSX178

- '93 CHEVY CAVALIER #87049A/KYB26H
- '91 TOYOTA TERCEL #87283/EPG145
- '88 HONDA ACCORD #87333/FVE204
- '92 HONDA CIVIC #87270/EVB448
- '93 GEO METRO #21415A/GFX760
- '91 HONDA CIVIC #20820A/EDP125
- '90 HONDA CIVIC #20870A/FFD375

- '92 NISSAN SENTRA #86974
- '92 NISSAN PICKUP #87218/EPY696
- '93 DODGE COLT #87181/FBW682
- '93 GEO STORM #87336/FTY921
- '94 MAZDA PROTEGE #87272/HJH391
- '91 FORD AEROSTAR VAN #671128B/EZT272
- '95 GEO TRACKER #87310/GDB104
- '93 FORD THUNDERBIRD #87262
- '93 SUBARU IMPREZA #87337/MZD080
- '90 HONDA ACCORD #20764A/FCW434

## TONY HONDA USED CAR CENTER

98-051 KAMEHAMEHA HWY. • PH. 487-5595 DOC. FEES OF \$195

\*Credit on approval. Vehicles subject to prior sale. Terms written at 12-48 mos., 15.9% APR. Prices and payments plus tax, lic., and doc fees of \$195. 30 day exchange for vehicle of equal or greater value.



### IN DEEP WATER?

CREDIT WISE?  
BANKRUPTCY • REPOS  
BAD CREDIT?

WE CAN FINANCE A CAR FOR YOU TODAY.

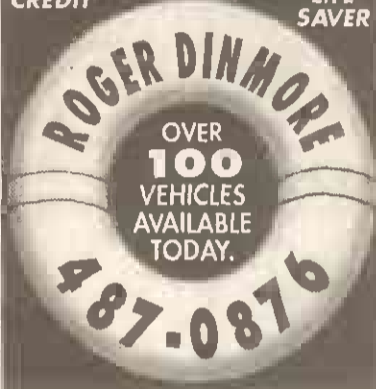
MAIL OR FAX THIS FORM TO ME NOW

Name: \_\_\_\_\_  
Address: \_\_\_\_\_  
City: \_\_\_\_\_  
State: \_\_\_\_\_ Zip: \_\_\_\_\_  
Date of Birth: \_\_\_\_\_  
SSN#: \_\_\_\_\_  
Employer: \_\_\_\_\_  
Gross Income: \_\_\_\_\_ Yrs: \_\_\_\_\_

I hereby authorize Tony Honda to check my credit.

Signature: \_\_\_\_\_  
Phone(home): \_\_\_\_\_  
Phone(work): \_\_\_\_\_

FAX: 487-1095  
MAIL: 98-051 KAM HWY. AIEA, HI 96701



# YES. HERE'S THE MOST AFFORDABLE CARS IN THIS PAPER

ALL VEHICLES \$50 DOWN

ALL \$999 TO TWENTY NINE NINETY FIVE \$50 DOWN FROM \$56 MO.

- '71 CHEVY CHEVILLE P225B/EJA606
- '89 OLDS 88 V6131A/FYT895
- '76 CHEVY MALIBU 61138A/ENU001
- '85 DODGE 600 61126A/FSC349
- '86 BUICK CENTURY 61126AA/EJA633
- '87 CHEVY CAVALIER 87276A/EAV931
- '88 OLDS CALAIS 67276A/FJR386
- '90 DODGE COLT V6137A/FDP568
- '87 MAZDA B2000 P/UP 67296A/FZC793

- '92 CHEVY LUMINA \$5,995 \$124.90/month
- '93 EAGLE SUMMIT \$5,995 \$124.90/month
- '91 PONTIAC BONNEVILLE \$5,995 \$166.33/month
- '90 PONTIAC FIREBIRD \$5,995 \$166.33/month
- '89 PLYMOUTH COLT \$5,995 \$249.79/month
- '93 FORD RANGER \$6,995 \$145.73/month
- '90 CHEVY \$10 P/UP \$6,995 \$194.31/month
- '92 EAGLE SUMMIT \$7,995 \$166.36/month
- '92 HONDA CRX \$7,995 \$166.36/month
- '90 FORD AEROSTAR VAN \$7,995 \$222.08/month
- '95 HONDA ACCENT \$8,995 \$149.82/month
- '95 NISSAN TRUCK \$8,995 \$149.82/month
- '92 VW JETTA \$8,995 \$187.40/month
- '93 FORD ESCORT \$8,995 \$187.40/month
- '94 PONTIAC SUNBIRD \$8,995 \$187.40/month
- '92 NISSAN SENTRA \$8,995 \$187.40/month
- '92 GMC SONOMA P/UP \$8,995 \$187.40/month
- '91 JEEP CHEROKEE \$8,995 \$249.84/month
- '92 JEEP WRANGLER \$9,995 \$208.23/month
- '93 MAZDA 626 \$9,995 \$208.23/month
- '94 NISSAN SENTRA \$9,995 \$208.23/month
- '94 HONDA ACCORD \$10,995 \$229.04/month

\*Credit on approval. Vehicles subject to prior sale. Terms written at 12-60 mos., 15.9% APR. Prices and payments plus tax, lic., and doc fees of \$195.

### DOC. FEES OF \$195

## PACIFIC

OLDSMOBILE • GMC • VOLKSWAGEN USED CAR CENTER  
98-055 KAM HWY. • 487-5526

# FOUR DAYS ONLY USED CARS OPEN \$25.00 DOWN FOR ANY CAR HERE\* ENDS SEPT. 22ND 1996

TWO LOCATIONS WE CAN FINANCE TODAY\* NO CREDIT? BAD CREDIT?

- \$25.00 DOWNPAYMENT DELIVERS**
- '89 FORD TEMPO AUTO, LOW MI., AIR #EZG806 \$1,999 \$99 MONTH
  - '88 FORD TEMPO AUTO, LOW MI., LOADED #FSR666 \$1,999 \$99 MONTH
  - '89 PLYMOUTH ACCLAIM AUTO, A/C, LOW MI. #FNC514 \$3,999 \$138 MONTH
  - '91 CHEVY CAVALIER AUTO, LOADED #D2235 \$4,999 \$138 MONTH
  - '90 FORD TAURUS AUTO, 6CYL, LOADED #FDJ314 \$4,999 \$172 MONTH
  - '92 CHEVY BERETTA AUTO, LOADED #D2257 \$5,999 \$165 MONTH
  - '89 PLYMOUTH VOYAGER VAN AUTO, 6CYL, A/C #FER663 \$5,999 \$206 DOWN
  - '88 PONTIAC FIREBIRD FORMULA AUTO, A/C, T-TOP, V8, CUST. WHLS #FSG547 \$5,999 \$206 MONTH
  - '91 BUICK CENTURY LOADED, 6CYL, LOW MI. #EBS437 \$6,499 \$193 MONTH
  - '92 PONTIAC SUNBIRD AUTO, AIR #HWC654 \$7,499 \$220 MONTH
  - '95 HYUNDAI ACCENT A/C, WARRANTY #GCT835 \$7,999 \$188 MONTH
  - '92 DODGE PICKUP AUTO, AIR #GGZ145 \$7,999 \$220 MONTH

- \$25.00 DOWNPAYMENT DELIVERS**
- '86 NISSAN STANZA WGN. AUTO, A/C, LOW MI. #FJD694 \$2,699 \$89 MONTH
  - '91 PLYMOUTH SUNDANCE LOW MI., FULLY LOADED #EC254 \$2,999 \$99 MONTH
  - '91 OLDS CUTLASS LOW MI., FULLY LOADED #ECZ641 \$4,999 \$139 MONTH
  - '93 ISUZU PICKUP LOW MI., CLEAN #M1439 \$5,999 \$182 MONTH
  - '90 ISUZU TROOPER 4X4 LOW MI. #FZX422 \$5,999 \$206 MONTH
  - '92 DODGE CARAVAN AUTO, A/C, TILT, CRUISE #GCV029 \$6,999 \$193 MONTH
  - '91 NISSAN STANZA AUTO, A/C, LOW MI. #GCD412 \$6,999 \$220 MONTH
  - '90 MAZDA MPV VAN CLEAN, LOADED #FWP620 \$7,999 \$220 DOWN
  - '89 ACURA LEGEND 36K MI., LOADED #FNG979 \$8,999 LOW TERMS
  - '94 EAGLE TALON 20K MI. #FYR622 \$8,999 \$210 MONTH
  - '94 GEO TRACKER AUTO, A/C, LOW MI. #HWK179 \$8,999 \$240 MONTH
  - '93 MAZDA 626 4DR A/C, TILT, CRUISE #FYE961 \$9,999 LOW TERMS

ALL VEHICLES ABOVE AT THIS LOCATION

## WINDWARD DODGE

46-177 KAHUHIPA ST. • 233-6000

\*Credit on approval. Vehicles subject to prior sale. Terms written at 24-60 mos., 12% APR. Prices and payments plus tax, lic., and doc fees of \$175.

DOC. FEES OF \$175

ALL VEHICLES ABOVE AT THIS LOCATION

## WINDWARD

CHRYSLER • PLYMOUTH • JEEP • EAGLE

46-004 KAWA ST., KANEHOE • PH. 233-6064

\*Credit on approval. Vehicles subject to prior sale. Terms written at 24-60 mos., 12% APR. Prices and payments plus tax, lic., and doc fees of \$175.

DOC. FEES OF \$175

### Classi COMMENTS

"Tremendous! Lots of calls from all over."

"People seem to like MidWeek and it's affordable"

Kim Adams  
Sweeping Beauty

"Business has increased since I advertised with MidWeek/Sun Press."

"Everybody gets MidWeek and they don't have to pay for it."

Thomas Vasconcellos  
Roof Masters Inc.

MidWeek Sun Press Classified 235-5881

## GET YOUR WHEELS TODAY

### ALLOTMENT FOR CARS

Low down, Hondas, Toyotas, Fords, Trucks, Chevys, Easy Payments

If You Can Set Up An Allotment or Direct Payment You Can Drive Now!

0% INTEREST NO APPROVAL NEEDED

# 483-4400

AUTO RESALE 98-147 KAM HWY.

Isuzu	Plymouth	Subaru
'96 RED RODEO 4WD V6, take over payments. \$395/mo. must qualify. 625-8878.	'89 ACCLAIM 4 dr., auto, A/C. We finance FNC414, \$3,999.	'88 JUSTY 84K mi., great cond., \$800. 545-3441 after 10 am.
Mercedes	'91 SUNDANCE A/C, low mi. We finance D2198, \$3,999. Windward Chrysler Jeep 233-6068	'90 LEGACY auto., white luxury sdn., new A/C runs excl., \$6500. 628-1294.
'72 250C LIMITED Production coupe, All orig. chrome, ruby red w/ cognac int. P/W, auto on column, 1 owner, first \$4,500 takes it. 261-4923.	'88 FIREBIRD V-8, low mi., A/C, loaded. We finance FSG547, \$5,999.	'84 COROLLA runs great, \$1500. Call Diana, 284-0877.
Mitsubishi	'90 GALANT white, 4 dr., auto., good shape. \$5200/offer. 236-4202.	'86 TERCEL 4 dr., auto. a bargain, FDW842, \$1,195. Cutter Ford/Isuzu 98-015 Kam Hwy. 487-3811
Nissan	'91 STANZA auto, A/C, low mi. We finance. GCD412, \$6,999.	'89 TERCEL auto., A/C, good cond., new trans., \$3000. Call 254-8085.
'92 CIVIC 4 dr., CD, low mi. ETS840, only \$8,999. 396-6788 or 396-6281.	'92 SENTRA 2 dr., A/C, auto., 72K mi., new tires, nice. \$5800/OBO. 839-3417.	NO credit or bad OK. Will fin. Toyotas, Hondas, Trucks, vans, \$795 to \$5995. 2 Lots. Country Cars, Kaneohe, 247-0330, Kahalaui, 239-6754.
'94 CIVIC A/C, cass., #47485, \$9,895. Cutter Mitsubishi 94-149 Farrington Hwy. 671-2626	Oldsmobile	Triumph
NO credit or bad OK. Will fin. Toyotas, Hondas, Trucks, vans, \$795 to \$5995. 2 Lots, Country Cars, Kaneohe, 247-0330, Kahalaui, 239-6754.	'85 CUTLASS SUPREME 2 dr., auto. P/S, chrome wheels, FWZ750, \$1,295. Cutter Ford/Isuzu 98-015 Kam Hwy. 487-3811	'75 SPITFIRE 1500, 23K orig. mi. 99% recon'd., \$4500/OBO. 486-9178.
Hyundai	'86 442 2 DR. MAROON. RUNS GOOD, \$2000/OBO. CALL 262-6881.	Volkswagen
'93 EXCEL very clean, FDY120, \$5,995. Cutter Mitsubishi 94-149 Farrington Hwy. 671-2826	IF A LITTLE extra cash would light up your life, turn on to the Classifieds	'73 THING Rebuilt motor. Extra parts, \$4000. Call 422-8487.
		'87 FOX A/C. AM/FM cass., alarm. Must sell, \$2500/OBO. 254-2365.

NEW 1997S

## HERE IN STOCK

### BUELL & KAWASAKI

In Waipahu off Farrington Hwy. next to Cornet 94-896 Moloalo St.

Sales & Service 671-6711 Parts 671-6781

### ABC Car Care Center

Specializing in Foreign and American Cars  
ASE and State Certified Mechanics

# \$19.99

## Oil Change Special

- Tune-up
- Alr Conditioning
- Transmission
- Muffler
- Safety Check
- Computers
- Brakes
- Engine Overhaul

1336 Dillingham Blvd. Honolulu, HI 96817 (Next to Kapalama Shopping Center)

Call us for an appointment. 847-1300

## the Classifieds!

# 235-5881

## Mike McKenna's

# WINDWARD Mazda

### MILITARY DISCOUNT HEADQUARTERS

**4.8% APR** \* FINANCING ON MOST NEW '96 MAZDA'S

**FINAL DAYS! OUR LOSS IS YOUR GAIN!**



**\$13,988**  
Stock #150013

### NEW MAZDA MPV VAN

Stock #150119

**\$17,688**

Air Conditioning  
36mo/50,000 mi. Factory Warranty  
Driver & Passenger Airbags \*7 Passenger Seating

### '96 Mazda Miata

**\$199** \*  
with A/C

Stock #160120

### Here Now! '97 MAZDA 626

\*MPI Fuel Injection \*60/40 Split Rear Seat \*Dual Airbag Safety  
Better Mileage Than Camry!

### Jetta Treks

We Have Them!

**0.0% APR**

Financing Available

All new Volkswagens include the incredible 10 yr./100,000 mi. VW factory warranty and all scheduled service for 2/24,000!

**JUST GAS AND GO! HURRY! ONLY 3 TREKS LEFT!**

Includes Trek Mountain Bike and Custom Rack with Jetta Trek!



'85 Cad. Deville #7159FRV568 Cold A/C, Leather, Factory Wire Caps, Runs Great! <b>\$3988</b>	'88 Olds Cut Sprm #7167FE348 H/PD V8 Factory Mag. Cold A/C, Sharp Low Miles! EASY FINANCING! <b>\$4488</b>	'85 VW Vanagon #7183FRA162 Hard To Find Like This, Runs Great! EASY FINANCING! <b>\$4988</b>	'89 Honda Accord #7071FZL345 Auto, Power Pkg, More EASY FINANCING! <b>\$5988</b>	'89 Honda CRX SI #7134EG491 5 Spd. A/C, Roof! EASY FINANCING! <b>\$6288</b>	'85 Miss. Sentra #7124GE955 A/C, Truck Wheels! EASY FINANCING! <b>\$6488</b>
'94 Saturn SL2 #7133GUT220 5 Spd. A/C, Nice! EASY FINANCING! <b>\$8688</b>	'90 Ford Mustang #7144FGW838 Auto, A/C, Loaded! EASY FINANCING! <b>\$9488</b>	'91 Honda Accord #7090EBT956 AC, AM/FM Cass. Low Miles! EASY FINANCING! <b>\$9988</b>	'94 Honda Civic #7052FRE195 A/C, Rims, Trick Paint! EASY LEASE PLAN! <b>\$9988</b>	'92 Jeep Wrangler #7097GEB170 5 Spd. V6, Hard Top EASY LEASE PLAN! <b>\$10988</b>	'92 Buick Park Ave #7112FFW947 Ultra Model, Loaded! EASY LEASE PLAN! <b>\$12488</b>
'91 Toyt, Celica #7035EXG837 Auto, A/C, Roof! EASY FINANCING! <b>\$8988</b>				'95 Mazda B2300 #7173GDR291 Cass. Mag. Liner EASY LEASE PLAN! <b>\$12988</b>	'93 VW Eurovan #7158FCR903 A/C Low Miles, Hard To Find! EASY LEASE PLAN! <b>\$17488</b>

\*14.9% on approval of Mazda credit on most new '96 Mazdas in stock. 48 mo. max. term. (+)0.0% APR for 24 mo. or select VW's to qualified customers by VW Credit. See dealer for details. (+)\$199 + tax/mo for 36 mos. Closed end lease. Total pmts. \$7164.00. Residual \$11,150.00 Total due at inception \$2772.00. Lease and APR not combinable. All vehicles subject to prior sale, plus tax, lic. & doc fee. All applicable factory rebates applied. Sale ends 9-22-96

**\$195 DOC FEE**

IN KAILUA TOWN!  
105 ONEAWA • 266-8000

# Mike McKenna's WINDWARD Ford

## WE HAVE '97 EXPLORERS HERE NOW!

### REMAINING BRAND NEW '95 & '96 MODEL BLOWOUT!

NO REASONABLE OFFER REFUSED!

STARTING FROM AS LOW AS **\$6,795\***

OUR LOSS IS YOUR GAIN! **ONLY** **\$6,795\***

#95141 Brand New '95 3 Door Escort!

### '96 Taurus



**6.9% APR**  
OR  
**\$1,000\***  
CASH BACK!  
OR USE AS DOWNPAYMENT!

### '96 Aerostar & '96 Windstar



**6.9% APR**  
OR  
**\$1,500\***  
CASH BACK!  
OR USE AS DOWNPAYMENT!

### All '96 3-Door Escorts



**3.9% APR**  
OR  
**\$1,500\***  
CASH BACK!  
OR USE AS DOWNPAYMENT!



\$195 DOC FEE

725 KAILUA RD. • 266-7000

# Cutter Chevrolet

## Where your Automotive dollar goes farther!

### CLASSIC 1955 CHEVY PICKUP TRUCK

Automatic, Excellent Condition. (#53939)

**\$SAVE**



### 1988 CHEVY S-10 PICKUP

Auto, Good Condition, Great Little Work Truck, Tool Box. (#FZU687)

**\$3988**

### 1988 MAZDA 626

AM/FM, 4 Door, Auto, Low Miles, Great Shape! WOW! (#GAN674/#53711)

**\$2988**

### 1990 FORD PICKUP F-250 4X4

If You Need A Great Work Truck, This Is It! (#288MCC)

**\$8988**

### '93 ACURA INTEGRA

A/C, AM/FM Cass., Auto, Good Condition. Luxury Sports Car! Call For Details. (#53903)

**\$12,888**



\$195 DOC FEE

3060 Kapiolani Blvd., Honolulu 737-0500

# CUTTER ALA MOANA Volkswagen/Mazda

### '96 Mazda Protege DX

- Power Assist Steering
- Dual Air Bags, Dual Mirrors
- 3 Yr./50,000 Mile Warranty

**\$0** **\$169**

#96159

### '96 Mazda MPV

- V6 Automatic
- Air Conditioning
- Power Steering
- AM/FM Cassette
- Power Windows.

**\$1000** **\$299**

#96181, 96218

### '96 Mazda Millenia "L"

- Leather seats
- Alloy Wheels
- Power Seats
- Automatic
- Auto Air
- Dual Air Bags
- Power Moon Roof.

**\$1000** **\$389**

#96321

### '96 Mazda B2300

- Rear Step Bumper
- Rear ABS
- Side Mirrors
- Driver's Side Air Bags
- Intermittent Wipers
- Front & Rear Mud Guards

**\$8,988** **\$0** **\$189**

#96497

### '96 Mazda 626

- Front Mud Guards
- Dual Remote Mirrors
- Intermittent Wipers
- Tinted Glass
- Child Safety
- Rear Door Locks
- Tilt Steering

**\$13,988** **\$0** **\$199**

#96317, 96373

CUTTER ALA MOANA

VOLKSWAGEN/MAZDA

800 Ala Moana Blvd.

537-3386

\$195 DOC FEE

\*96 B2300 Drive Off \$1355.24, Repurchase Option \$3771.48, 24/Mo. Lease. '96 B2300 Drive Off \$1355.52, Repurchase Option \$3820.07, 36/Mo. Lease. '96 Protege. \$0 Down \$169/Mo. \$25/Mo. Drive Off \$1233.24, Repurchase Option \$3774.23, 36/Mo. Lease \$137.39, 30 Down \$199/Mo. @ 3% Max. Drive Off \$1314.51, Repurchase Option \$10,441.25. '96 MPV. \$1000 Down From Customer With \$299/Mo. @ 7% Max. or \$1295 Cash Back and 4.8% Financing @ 48 Mos. Drive Off \$2500.90. Repurchase Option \$13,965.05. '96 Millenia. \$1000 Down \$389/Mo. @ 3% Max. Drive Off \$2203.38. Repurchase Option \$20,150.55. All Leases 10K. Mile for mileage in excess of 36,000 miles. Offer ends 9/26/96

# MIKE SALTA'S USED CAR EXTRAVAGANZA

HURRY - ENDS SEPTEMBER 25TH

'87 PONTIAC FIERO 6 Cyl. Auto, Sporty (#18044)	\$4,495	'92 FORD EXPLORER Most See, Great Value (#19973)	\$10,695
'90 GEO STORM Looks & Runs Great, Must See (#17997)	\$4,695	'91 HONDA ACCORD LX Auto, A/C, Loaded, Must See (#18459)	\$10,995
'90 OLDS CALAIS Auto, A/C, Clean, Great Buy (#17788)	\$4,995	'94 TOYOTA EXT. CAB A/C, P/S, Clean, Like New (#18163)	\$11,995
'93 HYUNDAI Excellent, Auto, A/C, Must See (#17845)	\$5,995	'94 MERCURY SABLE GS Well Equipped, Priced To Go (#18187)	\$11,995
'93 FORD TEMPO GL Well Equipped, Must See, Clean (#17773)	\$6,295	'94 MAZDA MX6 Auto, A/C, Loaded, Like New (#19995)	\$12,995
'91 DODGE DYNASTY Auto, A/C, Great Value! (#17958)	\$6,295	'93 FORD F250 XL Auto, A/C, Clean (#17960)	\$12,995
'94 SUZUKI SWIFT A/C, Low Mi., Great Value (#17953)	\$6,495	'95 PONT. GRAND AM V6, Auto, A/C, Loaded (#17801)	\$12,995
'92 PONT. GRAND AM Great Value, Must See (#17944)	\$6,695	'95 FORD MUSTANG Auto, A/C, Sporty, Well Equipped (#18150)	\$13,895
'89 HONDA CRX Clean, Loaded, Must See & Drive (#17811)	\$6,695	'96 CHEV. CAVALIER Auto, A/C, Loaded, Like New (#18098)	\$13,995
'89 HONDA ACCORD DX Auto, A/C, Clean, Low Mi. (#17816)	\$6,995	'95 FORD TAURUS Auto, A/C, Loaded, Great Buy (#17271)	\$13,995
'93 VW FOX A/C, Clean, Great Buy (#17552)	\$6,995	'95 NISSAN ALTIMA Like New, Low Miles (#17831)	\$13,995
'91 CHRYSLER 5TH AVE Well Equipped, Sharp, Must Drive (#17977)	\$6,995	'96 NISSAN P/U XE Auto, P/S, Like New, Low Mi. (#18136)	\$13,995
'91 DAIHATSU ROCKY SE Great Value, Must See (#17846)	\$7,295	'95 CHEV LUMINA LS Excel. Cond, Well Equipped (#18185)	\$14,295
'91 CHEV CAMARO Looks & Runs Great, Sharp (#18121)	\$7,495	'95 SUBARU LEGACY S/W Auto, A/C, Immac. Low Mi. (#17971)	\$14,995
'82 FORD PROBE Auto, A/C, Clean, Must See (#17865)	\$7,695	'93 MERCURY VILLAGER LS Loaded, Low Mi., Clean (#17921)	\$15,995
'92 PONT. GRAND PRIX Loaded, Clean, Black Beauty (#18109)	\$7,995	'94 MAZDA B4000 LE CAB PLUS V6, Auto, Loaded, Like New (#18138)	\$16,295
'93 MERCURY TRACER S/W Great Value, Must See (#18128)	\$7,995	'93 CHEV 1500 PKUP 4X4 Auto, A/C, Loaded, Immac. Great Buy (#18139)	\$16,995
'93 GEO TRACKER Clean, Great Value, Must See (#17951)	\$7,995	'94 ISUZU TROOPER 4X4 Loaded, Excel. Cond, Looks & Runs Great (#18160)	\$17,995
'92 MITSUBISHI ECLIPSE Great Buy, Must See (#17882)	\$8,995	'89 MERCEDES 420 SEL Great, Low Mi., Must See & Drive (#17959)	\$18,995
'91 HONDA ACCORD LX Auto, P/S, A/C, Loaded, Low Mi. (#17815)	\$10,695	'95 NISSAN PATHFINDER 4X4 Auto, A/C, Loaded, Immac. (#18151)	\$18,995

Vehicles subject to prior sale. Price plus \$197 doc fee, tax and lic.

## MIKE SALTA

## PONTIAC

HONOLULU: 2945 N. Nimitz Hwy. Ph: 836-2441  
 WAIPAHU: 94-212 Leolu St. Ph: 671-8033

# CUTTER FORD • ISUZU 1996 CLEARANCE SALE

**NEW '96 FORD ASPIRE**

Great Value Small Price  
Dual Air Bags #60749

**\$6,988**

**NEW '96 FORD ESCORT**

Top 10 Seller in America!  
#61007

**\$8,988**

**NEW '96 FORD MUSTANG**

Ford's #1 Selling Sportscar  
A/C, Cass. #61541

**\$13,395**

**RED TAG SPECIAL**

**LOW PRICES! HIGHEST TRADE-INS!**

**Cash Rebates up to \$2400**

**Financing As Low As 3.9% APR**

**NO HASSLES! ALL MARKED WITH LOW SALE PRICES!**

**NEW '96 FORD RANGER**

#61537

#1 Selling Small Truck in America

**\$8,688**

**'96 FORD WINDSTAR**

5 Star Safety rating, V6, Auto, A/C. #61892

**\$16,395**

**NEW '96 FORD EXPLORER**

Air Conditioning #61476  
America's Best Selling Sports Vehicle!

**\$17,488**

**ALL ISUZUS**

**'82 FORD CROWN VIC S/W**  
(Full Size) 6 Cyl. Auto, AM/FM, P/S.  
Power Pkg. (EAT1588/2838)

**\$495**

**'90 FORD ESCORT GT**  
4 Cyl. 5 Spd. AM/FM Cass.  
Always (E6257/18281)

**\$995**

**'86 TOYOTA TERCEL**  
4 Dr. Automatic, AM Radio, Bargain!  
(EDW842/2914)

**\$1195**

**'85 OLDS CUTLASS SUPREME**  
2 Dr. Auto, P/S, Radio,  
Chrome Wheels (FWZ750/2817)

**\$1295**

**'85 HONDA CIVIC SEI**  
4 Cyl. 5 Spd. P/S, AM/FM, CD Player.  
Rover Pkg. (FS9677/2828)

**\$1695**

**'89 ISUZU PICKUP TRUCK**  
4 Cyl. 5 Spd. AM/FM Cassette  
(FFR299/2816)

**\$1995**

**'87 ISUZU PICKUP TRUCK**  
Auto, P/S, Camper Top  
(01011N/2843)

**\$2495**

**'88 TOYOTA TERCEL DX**  
2 Dr. Auto, A/C, P/S, AM/FM Cass.  
(EGS298/2886)

**\$2895**

**'89 FORD PROBE**  
Auto, P/S, AM/FM Cass.  
(G6555/2912)

**\$2995**

**'90 FORD TEMPO GL**  
4 Dr. Auto, A/C, P/S, AM/FM Cass.  
(FT8235/2706)

**\$2995**

**'88 FORD MUSTANG LX CONV'T**  
Auto, P/S, Cass. Power Pkg. & More!  
(YAT588/2341)

**\$3895**

**'92 CHEVY CAVALIER**  
4 Cyl. Auto, P/S, Cass.  
(G85857/2884)

**\$3995**

**'91 MERCURY CAPRI CONV'T**  
Auto, P/S, AM/FM Cass.  
Always (E3724/2786)

**\$4895**

**'93 FORD ESCORT**  
2 Dr. 4 Cyl. Standard Trans., AM/FM  
Cass. Cassette (E3724/2786)

**\$4895**

**'91 OLDSMOBILE CUTLASS CALAIS**  
4 Dr. Auto, A/C, AM/FM Stereo, One Owner!  
(E9W625/2820)

**\$5895**

**'89 MAZDA MPV**  
V6, Auto, Front & Rear A/C,  
Power Pkg. & More (FWZ785/2225)

**\$6595**

**'91 FORD T-BIRD**  
V6, Auto, P/S, Cass., Power Pkg.  
(EGU110/2909)

**\$6895**

**'93 TOYOTA PASEO**  
Auto, P/S, A/C  
(EM755/2878)

**\$6895**

**'92 DODGE CARAVAN**  
Auto, P/S, A/C, AM/FM Cass.  
(EGJ905/2836)

**\$6995**

**'94 FORD ESCORT LX**  
S/W, Auto, P/S, AM/FM Cass., A/C  
(EP8559/2749)

**\$7995**

**'91 JEEP WRANGLER**  
Soft Top, 6 Cyl. 5 Spd. P/S  
(Z8A851/47320)

**\$8895**

**'95 PLYMOUTH NEON**  
4 Dr. Auto, P/S, AM/FM Cass.  
Power Pkg. (FVU134/2341)

**\$8995**

**'95 HONDA CIVIC**  
2 Dr. 4 Cyl. AM/FM Cass. One Owner  
Low Miles (GDC299/2752)

**\$10,795**

**'95 FORD CONTOUR**  
4 Dr. GL, Auto, P/S, A/C  
(G85810/2800)

**\$12,795**

**'93 MERCURY VILLAGER**  
V6, Auto, Front & Rear A/C, Cass.  
Power Pkg. & More (WPK834/2788)

**\$12,995**

**'93 HONDA ACCORD LX**  
4 Dr. Auto, A/C, Cass., Power Pkg.  
(GEV178/2484)

**\$12,995**

**'93 FORD MUSTANG CONV'T**  
V6, Auto, A/C, Power Pkg.  
& More (FDY574/2865)

**\$13,895**

**'93 FORD EXPLORER XLT**  
4 Dr. V6, A/C, Cass., Power Pkg. S  
& More (E2C942/2803)

**\$13,895**

**'94 HONDA ACCORD EX**  
4 Dr. Auto, A/C, Cass., Power Pkg.  
& More! One Owner (FBU172/2746)

**\$14,995**

**487-3811 98-015 KAM HWY., AIEA**  
Mon.-Sat. 8:30am-9pm, Sun. 9am-6pm

Prices inc. all factory incentives. \$400 College Grad rebate. \$300 Commercial rebate. Financing thru Ford Motor Credit. O.A.C. \*APR & rebate not combinable. 2.9% APR for 48 mos. on selected models. Prices plus tax, lic. & \$195 doc fee. Vehicles subject to prior sale. Sale ends 9/26/96.

# CUTTER DODGE In Waipahu

The Happiest Place In Waipahu

**LARGEST USED CAR & TRUCK DEPT. IN WAIPAHU**

**CLEARANCE CLEARANCE CLEARANCE**

**'96 AVENGER** \$1,999<sup>00\*</sup>

D1370

**AUTOMATIC** **16" WHEEL GROUP** **AIR-CONDITION** **AM/FM CASSETTE & CD PLAYER**

**'96 RAM P.U. "FULL SIZE"**

DI354

**LAST ONE! LOADED!**

**TWO TONE PAINT** **4 SPEED AUTOMATIC** **5.9 MAGNUM** **AM/FM CD PLAYER**

**'96 DAKOTA 4X4** \$15,995<sup>00\*</sup>

DI103

**LAST WEEK LEFT THIS WEEK 2 LEFT**

**POWER CONVENIENCE PKG.** **AIR-CONDITION** **CHROME WHEELS**

**'96 DODGE "GRAND" CARAVAN SE** \$349<sup>00\*</sup>

Only 36 Miles

**ONLY ONE LEFT LOADED** **3.3 V-6** **DUAL SLIDING DOOR**

**'96 INTREPID** \$15,995<sup>00\*</sup>

**LAST WEEK LEFT THIS WEEK ONLY 2 LEFT**

**AIR-CONDITION** **4 SPD AUTOMATIC** **16" CUSTOM WHEELS** **AM/FM CASSETTE 8 SPEAKERS**

### THE HAPPIEST PLACE IN WAIPAHU

'87 HONDA ACCORD CASSETTE CLEAN (#18072)	\$1995	'88 PONTIAC GRAND PRIX CASSETTE CLEAN (#18072)	\$1995	'93 HYUNDAI XL VERY CLEAN (#18072)	\$5995	'93 DODGE COLT AP CASSETTE (#18072)	\$7995	'94 HONDA CIVIC AP CASSETTE (#18072)	\$9895	'4 CHEVROLET ASTRO VAN D.A.P. CLEAN (#18072)	\$11,595
'94 PONTIAC FIREBIRD V6 CLEAN (#18072)	\$11,995	'92 HONDA ACCORD LX LOOSE (#18072)	\$11,995	'93 MAZDA MPV V6 A/C (#18072)	\$12,995	'94 MAZDA MPV V6 PASSENGER AIR (#18072)	\$14,595	'95 MITSUBISHI ECLIPSE GS V6 WHEELS CASSETTE (#18072)	\$14,995	'95 HONDA PASSPORT 4X4 V6 4.0 (#18072)	\$16,995
'93 FORD F-350 X-CAB V6 4.0 (#18072)	\$16,995	'94 DODGE RAM 4X4 V6 4.0 (#18072)	\$17,995	<b>ON THE SPOT APPROVALS</b>		'95 FORD F-150 4X4 XLT V6 4.0 (#18072)	\$18,995	'95 DODGE STEALTH V6 4.0 (#18072)	\$18,695		

**94-149 Farrington Hwy • Waipahu • 671-2626** **\$195 DOC FEE**

ALL PAYMENTS BASED ON CHRYSLER GOLD KEY PLUS PROGRAM

96 AVENGER \$199 @ 24 MOS. GFV \$11,249 @ \$2,000 DOWN FROM CUSTOMER. SELLING PRICE \$15,000 @ \$1,000 AFTER REBATES. 96 GRAND CARAVAN \$349 @ 36 MOS. GFV \$13,152 @ \$2,000 DOWN FROM CUSTOMER. SELLING PRICE \$21,317 @ \$1,000 AFTER REBATES. VEHICLES MAY NOT BE EXACTLY AS SHOWN. LEASE PRICES MAY DIFFER. ALL PRICES INCLUDE ALL APPLICABLE REBATES. PRICES AND PAYMENTS DOES NOT INCLUDE TAX, LIC., DOC FEE. \*THIS OFFER GOOD THROUGH 9/26/96

# CUTTER DODGE CHRYSLER PLYMOUTH JEEP EAGLE

TWO GIANT LOCATIONS

921 Kamehameha Hwy.  
PEARL CITY 455-1071

735 Dillingham Blvd.  
HONOLULU 842-6300

**NEW '97 JEEP WRANGLER SE**

4X4

Dual Air Bags  
#730029, 730031, 730034

**\$11,988**

**NEW '97 DODGE CARAVAN**

DRIVER'S SIDE SLIDING DOORS

Dual Sliding Door,  
6 Cyl., Dual Airbags,  
A/C, P/S, P/B  
#710021

**\$16,988**

**NEW '97 NEON HIGHLINE**

NOT A LEASE!

Auto, 2.0L 16V Engine,  
AM/FM Stereo, P/S,  
P/B, Dual Air Bags,  
CD Disc. Changer  
#710006

**0 CASH DOWN \$199/MO**  
24 MONTHS

**NEW '97 DODGE STRATUS**

4 Dr. Sedan, Cloth Bucket Seats,  
Personal Security Group, 4 Sp.,  
Auto, 2.4L/16V Engine, Electronic  
Speed control, Dual Airbags, P/S,  
P/B & Much Much More  
#710030, 710032

**0 CASH DOWN \$199/MO**  
24 MONTHS

**NEW '97 CHRYSLER CORUS**

4 Dr. Sedan, 4 Spd., Automatic, 2.5L  
24V/16V Engine, P/W, P/L, P/B & Much  
Much More! #720011, 720014

**0 CASH DOWN \$219/MO**  
24 MONTHS

**NEW '97 GRAND CHEROKEE LAREDO**

NOT A LEASE!

Auto, 4.0L,  
P/Tech Engine,  
A/C, Dual Air Bags,  
P/B, Speed Control, TR. #730049

**0 CASH DOWN \$309/MO**  
36 MONTHS

**\$22,488**

**NEW '96 PLYMOUTH VOYAGER**

7 PASSENGER

Air Cond, P/S, P/B & Much,  
Much More!  
#620517

**\$14,488**

**NEW '96 DODGE CARAVAN**

A/C, P/S, P/B & MUCH MUCH MORE!  
#610951

**\$13,988**

**NEW '96 DODGE AVENGER**

3 TO CHOOSE FROM!

Auto, P/S, A/C Cass., P/B,  
Dual Air Bags, Cloth Bucket  
Seats, P/B, 16V Engine  
#610720, 610726, 610728

**0 CASH DOWN \$199/MO**  
24 MONTHS

**NEW '96 JEEP CHEROKEE 4X4**

NOT A LEASE!

4 Dr. Sport,  
Cloth Bucket  
Seats, Auto, A/C, P/S, P/W, P/L, P/V, 4.0L Engine, Power Tech 6  
Cyl., Sunscreen Glass, AM/FM  
Cass., Conventional Spare Tire,  
6 Disc CD Changer  
#630182, 630183, 630246,  
630247, 630256, 630278, 630283,  
630288, 630289, 630290, 630296

**0 CASH DOWN \$269/MO**  
24 MONTHS

**NEW '96 PLYMOUTH BRUYZA**

6 Disc CD Changer, 4 Dr.  
Sedan, Cloth Bucket Seats, 4  
Spd., Auto, 2.0L 16V Engine,  
Electronic Speed Control, P/S,  
P/B & Much, Much More!  
#620446, 620448

**0 CASH DOWN \$149/MO**  
24 MONTHS

**NEW '96 DODGE STRATUS**

NOT A LEASE!

4 Dr. Sedan, Cloth Bucket Seats,  
Special Edition Pkg., Premium Sound,  
AM/FM CD Player, 14" Air-Lock  
Bridges, 4 Spd., Auto, conventional  
Spare Tire, P/S, P/B & Much Much  
More! #610730, 610727

**0 CASH DOWN \$179/MO**  
24 MONTHS

**NEW '96 CHRYSLER CORUS**

4 Dr. Sedan, Premium Sound,  
AM/FM CD Player, Integrated  
Child Seat, 4 Spd., Auto,  
2.4L/16V Engine, Vehicle  
Security Alarm, P/W, P/L, P/S,  
P/B & Much More!

**0 CASH DOWN \$199/MO**  
24 MONTHS

**NEW '96 CHRYSLER CONCORDE**

4 Dr. Sedan, Cloth Bucket  
Seats, Chrysler Infinity,  
Integrated Child Seats, Auto,  
3.3L V6 Engine, 8 Way Power  
Seats, 16" Sparkle Silver  
Aluminum Wheels, P/S, P/B &  
Much, Much More! #620597

**0 CASH DOWN \$269/MO**  
24 MONTHS

**NEW '96 CHRYSLER LISI**

NOT A LEASE!

Leather Interior

Fully Loaded, Infinity Sound,  
Power Moon Roof  
#620171, 620435, 620431

**0 CASH DOWN \$369/MO**  
24 MONTHS

**\$195 DOC FEE**

**CUTTER DODGE**  
In Honolulu

735 Dillingham Blvd

**CUTTER DODGE**  
In Pearl City

92

Gas Express  
Transfer Bank  
Honolulu

← Ewa KAMEHAMEHA HWY →  
← CUTTER DODGE PEARL CITY →  
← Waianae HOME →