

Hawaii MARINE



Vol. 23 no. 21 Serving Marine Forces Pacific, MCB Hawaii, III Marine Expeditionary Forces, Hawaii and 1st Radio Battalion

June 15, 1995



ATVs are just one of the many exciting things to do at Waimea Falls Park...See B-1.

Oceanic Cable stops free installation

Oceanic Cable has announced that it will no longer provide free cable television installation and transfers to military families, effective immediately. To request Oceanic Cable services, military families should call Oceanic Customer Service at 625-8100.

Tips for skin care

With summer here and everyone enjoying the sun, here are a few tips to skin protection on those hot Hawaiian days:

- Children and fair-skinned people should use a product with a sun protection factor of at least 15.
- Apply sunscreen liberally (a large handful) about 30 minutes before going outside. Reapply sunscreen after swimming or perspiring heavily.
- Limit exposure between 10 a.m. and 3 p.m., when the sun is strongest.
- Sun glasses help protect eyes and may prevent cataracts.
- Avoid exposing babies under 6 months old to direct sunlight. Sunscreens irritate their skin, and their developing eyes are more sensitive to sun damage.

Base cleaners to change

A&P Cleaners has requested to terminate its services aboard Marine Corps Base Hawaii, possibly as early as June 19. MWR is currently in the process of selecting a new vendor in order to provide uninterrupted service, if possible. However, quality of service to MCB Hawaii laundry customers remains the primary consideration.

TQL icons legend for Hawaii Marine

Goal #1 — Enhance Military Readiness



Goal #2 — Advance Risk Management and Loss Prevention



Goal #3 — Enhance Quality of Life



Goal #4 — Continuously Improve



Inside

Ads.....	B-3
Blotter.....	A-2
Briefs.....	A-6
Movies.....	B-2
MWR Offerings.....	B-3
On the HomeFront.....	A-3
Sports commentary.....	B-1
Tickets.....	B-2



Aloha — LtGen. Charles C. Krulak, Commander, Marine Forces Pacific bid farewell to the Marines, Sailors and civilians of Hawaii as he heads to Washington, D.C.



Leaders meet — LtGen. Charles C. Krulak greets Gen. Richard D. Hearney, Assistant Commandant of the Marine Corps, prior to the evening parade in honor of the Assistant Commandant.

Evening parade honors Assistant Commandant bids Aloha to Commander Marine Forces Pacific

MarForPac PAO

General Richard D. Hearney, Assistant Commandant of the Marine Corps, was honored during an evening parade at Marine Corps Base Hawaii, Kaneohe Bay, on June 8. The parade was hosted by LtGen. Charles C. Krulak, the outgoing Commander, Marine Forces Pacific.

The still evening on the Mokapu Peninsula provided a picturesque setting as the sun set behind the emerald backdrop of the Koolau mountains.

The evening parade featured more than 800 Marines from III MEF Forces, Hawaii, Marine Corps Base, Hawaii and 1st Radio Battalion. The MarForPac Band provided musical support. There were also static displays of various Marine Corps fighting equipment and aircraft.

During his remarks to the parade formation and the guests of the evening parade, LtGen. Krulak gave a

farewell to the Marines of his command. "You're magnificent and it's been my honor to command you. I'm on my way to Washington, D. C. to assume the stewardship of the Corps as the 31st Commandant. I will not forget you. I will not forget your sacrifice and I thank you for what you have done."

LtGen. Krulak's duty in Hawaii includes a tour as the commanding officer of 3d Battalion, 3d Marines from 1983-1985, along with his recent

post as Commander, Marine Forces Pacific. MGen. Jefferson Davis Howell Jr. will serve as the acting commander of MarForPac until the confirmation of LtGen. Krulak's replacement is completed by the Senate.

LtGen. Krulak will assume duties as the 31st Commandant of the Marine Corps from General Carl E. Mundy Jr., during a change of command ceremony in Washington, D.C., June 30.

Guidance and supervision is important for a safe summer

Sgt. Jesse Faleris
Staff writer

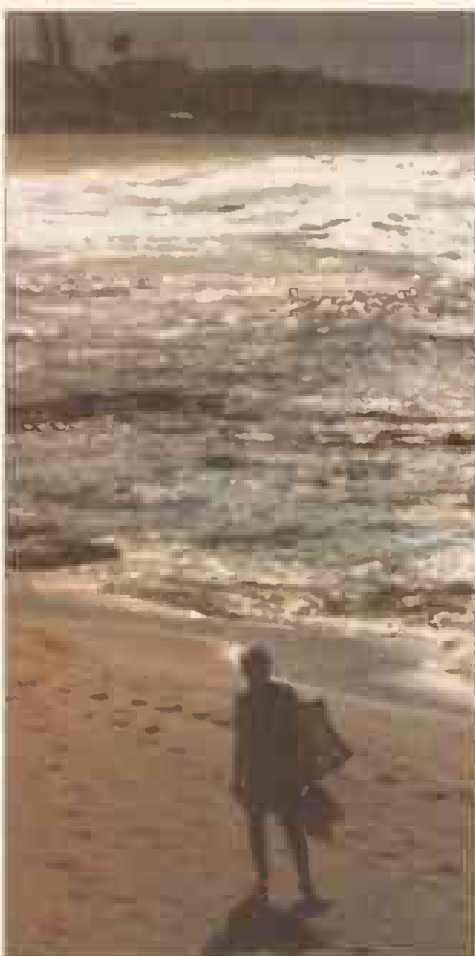
Longer and hotter days serve as an alert to children that days of sun-filled fun have arrived, and a warning to parents that they will soon be met with the challenge of providing necessary guidance and supervision for their children during summer vacation.

With the sudden lack of school time supervision, working parents may find themselves unsure of what their children are allowed to do. Base regulations provide parents with some guidelines to follow.

A child 10 years old or older is authorized to remain in government quarters unattended, and may also supervise a sibling who is at least six years old. Emergency phone numbers must be provided to the attending child. Toddlers five years old or younger, however, must be cared for by a responsible adult.

One of the coolest places to spend Hawaii's hot summer afternoons is at one of the beaches on base. These areas provide families with hours of entertainment, but there are some rules and safety procedures that should be considered.

For starters, access to the beaches aboard the base is restricted to authorized routes. Those who are anxious to hit the surf must use designated routes to get to the beaches. Access through base housing yards or along the flight line and across the golf course is not permitted. According to the regulations, those using the beach facilities are required to carry an identification card. Active duty personnel and spouses are the only persons authorized to sponsor guests on the beaches. Two guests can be sponsored per day. Sponsors must accompany their guests at all times while on MCB Hawaii beaches. In addition,



Summer days — With summer here, many youth will be spending time on the beach. It is important parents explain safety and sponsorship rules to their children.

tion, those who plan to snorkel or dive are required to float a buoy with a flag at their site.

"The lifeguards man the beaches from 10 a.m. to 5 p.m. daily," explained Seamus Kelly, assistant water safety manager, MCB Hawaii, Kaneohe Bay. "Patrons are encouraged to use the beach facilities during those hours."

Often the ocean surrounding Hawaii can be deceptive. What may seem to be relatively calm conditions, may

See Safety, A-5

Outgoing CG discusses accomplishments, future goals for MCB Hawaii

GySgt. Stephane Castangway
Public Affairs Chief

On June 19, 1995 BGen. Richard F. Vercauteren will pass the colors of Marine Corps Base Hawaii to BGen. David F. Bice. The change of command ceremony comes on the heels of a whirlwind of changes that have occurred during BGen. Vercauteren's 10-month tour as commanding general. During a recent interview, BGen. Vercauteren discussed some of these changes and other issues which concern those who work and live aboard Marine Corps Base Hawaii.

Q: Upon taking command, what were your first priorities?

A: Having been here for a year-plus as the MEB commander, I was concerned with the quality of life of our Marines and the technological capability of this base to move into the 21st Century. As a result, within hours of taking command, I met with my managers and laid out my intent. I wanted the executive steering committee to identify their requirements. Ultimately, we came up with a strategic plan. That strategic plan is the foundation for everything we do here at Marine Corps Base Hawaii. That became tied to insuring that our technological upgrades, both hardware and software, would bring us into the 21st Century and beyond. It also addressed the quality of life concerns of the Marines, Sailors, civilians and family members on this base.

Q: Have those goals been accomplished?

A: There have been some significant changes. A lot of this involves military construction money, technology acqui-

sition and maintenance and repair dollars. It's an ongoing effort. There are a lot of things that need to be done on this base. You just have to stick with your plan and keep moving.

Q: During your tour as commanding general, what has given you the most satisfaction?

A: As the CG, I was in a position to directly impact the quality of life of the Marines, Sailors and their families. For example, a Gunny had a house that was flooded by a sewer system backing up. The Sergeant Major came to me and said that the Gunny had been trying to get moved into another house. That was a situation that I felt was unhealthy. I picked up the phone and told housing to move him. Many of those things were done on a day to day basis because the managers realized I would support them, especially when it concerned quality of life issues.

Q: What effect have these changes had on the readiness of the Marines aboard the base?

A: Readiness has probably gone up. In fact, we are constantly looking at ways to improve that. Now that this billet has been designated as the deputy commander, III MEF and commanding general, Marine Corps Base Hawaii, there will be one individual responsible for it all. That will streamline the decision-making process and probably increase the readiness.

Q: Recently, you were a strong influence in getting approval for the new Superblock. (Consolidation of a new exchange, retail outlets and child care facility near the commissary) Why was it so important to get it approved?

See Departing, A-4

The vision of MCB Hawaii: To be the most responsive, efficient and innovative provider of support, training, facilities and services in the Department of Defense now and into the 21st century

Blotter

• Seven victims reported between April 26 and 1:30 p.m. June 1 person(s) unknown entered a secured storage room inside barracks 1032 and stole several television sets, video cassette recorders and compact stereo systems.

• A complainant reported suspects 1 and 3 were involved in a verbal altercation at barracks

1633. Military police then contacted suspects and detected the odor of an alcoholic beverage emitting from their breath. Investigation revealed suspect three was under the legal age to consume alcohol and that suspect two had purchased alcohol for him. The military police apprehended the suspects and suspects one and two became belligerent toward MP's and a witness. The suspects were released to their unit representative.

• A victim reported between 3 p.m. April 29 and an unknown time on May 2 person(s) unknown damaged the rear wiper on the victim's vehicle parked adjacent his quarters.

• An anonymous caller reported suspect and an unidentified male were involved in a verbal altercation adjacent Harris Ct. when they wrestled each other to the ground. The unidentified male departed the area. Military police detected the odor of an alcoholic

beverage on the suspect's breath who was under the legal age to consume alcohol. The military police apprehended suspect and released him to his unit representative.

• A complainant reported she observed a suspect looking through a window at her quarters. The military police arrived on scene when the suspect departed the area in his vehicle. Military police subsequently apprehended the suspect for DUI

on Mōkapu Road. The intoxilyzer results were .173% blood alcohol content. The military police released the suspect to his unit representative.

• The evidence/lost and found custodian has in his possession bicycles, watches, men's gold rings and much more. If you think any of these items belong to you, contact Sgt. Ranke at 257-1306. Unclaimed property will be disposed of 45 days after receipt at MPD.

The Hawaii Marine is an unofficial newspaper published every Thursday by RFD Publications, Inc., 45-525 Luluku Road, Kaneohe, HI 96744, by a private firm not connected with the Department of the Navy or the United States Marine Corps. All advertising is provided by RFD Publications, Inc., 235-5881.

The Hawaii Marine is a free publication delivered each week to all family housing units aboard Marine Corps Base Hawaii and to all Hawaii-based Marine Corps commands. Housing residents may contact the publisher directly if they wish to stop home delivery. Questions concerning circulation policies and services can be answered by calling the publisher.

The Hawaii Marine welcomes stories and photo submissions

from its readers, but submission is not guarantee of publication.

Please call the MCB Hawaii Consolidated Public Affairs Office at 257-5600 for Windward and Leeward activities, FAX 257-1289. Opinions expressed by the publisher and journalists are their own and are not to be considered an official expression of the Department of the Navy or the United States Marine Corps.

Items advertised in the Hawaii Marine must be made available for purchase, use or patronage to everyone without regard to race, creed, color, national origin, religion, age or sex of purchasers, user or patron. The appearance of all advertisements in the Hawaii Marine to include inserts and/or flyers does not constitute endorsement of the firms' products and services by the Department of the Navy or the United States Marine Corps.

Commanding General.....BGen. R.F. Vercauteren
Public Affairs Officer.....Maj. P.A. Sivigny
Public Affairs Chief.....GySgt. Stephane Castonguay
Editor.....Aaron Martin

Serving the following commands

Marine Forces Pacific.....LtGen. C.C. Krulak
III Marine Expeditionary Force.....MGen. W.E. Rollings
Marine Corps Base Hawaii.....BGen. R.F. Vercauteren
3d Marines.....Col. J.D. Lenard
Aviation Support Element, Kaneohe.....Col. M.H. Boyce
Combat Service Support Group-3.....Col. T.E. White
1st Radio Battalion.....LtCol. R. Monreal

STOP LOOK AND LISTEN

Come and Worship with us at
Windward Community Church of God In Christ
with Pastor Grady(Joy Bell) Warren
at Kokokahi YWCA

45-035 Kaneohe Bay Drive
Sunday School • 10:00 a.m. • Morning Worship • 11:00 a.m.
Ph. Res. 247-2705 • Church 284-2035

COUPLES IN CONFLICT

INDIVIDUALS • COUPLES • GROUPS

- Communication Problems
- Relationship Difficulties
- Adjustment To Military Life In Hawaii
- Coping with Separation & Deployment Issues
- Stress • Depression • Anxiety • Co-Dependency
- Self-Esteem • ACOA Issues • Eating Disorders

Years Of Experience Counseling Military Couples & Families

PHYLLIS Z. LEVY
MSW, LCSW
Psychotherapist Champus Accepted

839-7779
(5 Minutes from Tripler)
2850 Paa St, Suite 217

South Seas
Night Endurance Challenge
Friday, June 16th at 7:30pm
Gates open at 5pm
Practice starts at 6pm

Hawaii Raceway Park
Spectator Admission \$5
For info call 845-BIKE

Head toward Waianae on H-1. Take Exit 1 Campbell Industrial Park.
Follow road for about 1 mile, the track is on your left!

Therapeutic Massage

Specializing in:

- Back Pain
- Neck Pain
- Stress Relief

\$10⁰⁰ Off

Regular \$45⁰⁰ One Hour Massage
Unlimited Visits
Expires June 22, 1995

Gifts Certificates Available • **263-0590**

Summer Sizzle Special!

Take some time out from your fun in the sun with a photo session from...

Fashion Dream Shots

Make your appointment today!
Gift Certificates Available
449-1568

Photo Session Includes:

- Makeover & Hairstyling
- Wraps & Accessory Changes
- High-Fashion Photo Session
- Photography Sold in Packages*

\$29⁹⁵ Sitting Fee expires 6/23/95

High-Fashion Photography • Hickam Skills Development Center • 335 Kuntz Ave., Hickam AFB

*Portraits sold in a variety of sizes/dollar amounts and are back in about a week after proof review.

JOINT MILITARY FAMILY ABUSE SHELTER

24 hour Crisis Line
533-7125

Abuse occurs everywhere
You are not alone
We can help!

CONTACT LENSES & FAMILY VISION CARE

There's no mystery to seeing clearly, with style. We've got the ideal eye deal to help you see things through.

CONTACT LENSES:
GUARANTEED LOWEST PRICE!
(Soft & Disposable)

You can wear comfortable, problem-free contact lenses home on your first visit. Call for details.

50% OFF
ALL EYEGLASS FRAMES

TRICARE and TRICARE PRIME
Accepted for Dependent Eye Examinations

DR. CHARLES DEAN,
Optometrist
Since 1976 261-9735
139 Hekili St., Kailua

Eye Examinations Available • One-Stop Vision Care

Happy Father's Day
FROM THE
GOODIE KORNER
Baskets & Leis (made to order)

Wide Variety of Seeds

- Shave Ice • 2¢ candies • Crackseeds • Toys & Gifts
- Party Favors • Li Hing Gummy Bears • Li Hing Mango
- Li Hing Cranberries • Li Hing Mochi Crunch
- Sweet Colored Popcorn

"When You Get The Onos Come See Us!!"

GOODIE KORNER CRACKSEED CENTER
Temple Valley Shopping Center
Next To Times Supermarket
239-6663

SUPPORT RESEARCH.

It Works Wonders.

American Heart Association

THE VIEW.

THE PRICE.
(Starting at \$149,000Fs)

THE HOME.

PERFECTION.

You've always dreamed of owning a home in Hawaii.

Make it happen with one simple phone call.

Your New Beginning at Pualani Estates means just that - the perfect home on the slopes of Hualalai, just minutes from downtown Kailua-Kona.

Six beautifully designed floorplans and one magnificent coastline view.

It's all yours. A home in Hawaii. Perfect.

Pualani Estates
1-800-604-4NEW
On the Big Island
334-0000
NOW UNDER CONSTRUCTION!

"We chose Pualani Estates because of its remarkable value and its exceptional environment."

BENCHMARK INTERNATIONAL
Exclusive Agent
Barrie Parker
 Realtor

On the HomeFront

Before signing a lease agreement, read it

Mary Lynne Wolfe
K-Boy Housing Office

You've decided to take the plunge and find a place to live off base. After a long search for something that's both attractive and affordable you find the home of your dreams. The landlord approves your rental application and you're eagerly awaiting the moment you can move in. All you must do before you can officially call the place "home" is to sign a rental agreement.

The landlord shoves a paper at you and says, "Just sign your name on the bottom line and the place is yours." You glance over the lease and notice that it's filled with a lot of legal mumble-jumble. "What the heck," you think, "these things are all the same." You press your pen to the paper and—

Wait a minute! Not so fast! Not only should you thoroughly read and understand that lease before you sign it, but if there's any



clause with which you disagree you can request the landlord to delete or change it before you sign.

For example, what if the lease prohibits overnight guests, but you know your parents will soon visit and had planned for them stay with you? What will you do with your pet guinea pig if the lease prohibits animals? What if the lease won't allow you to play music during the day because the landlord is a shift worker who sleeps at that time? These are all issues you should discuss with the landlord. If a lease fails to meet your needs then the property might not be the "home of your dreams" after all.

Besides asking for changes or deletions to a lease, you can request that items be added. For military members, perhaps the most important clause in a lease is that which is commonly referred to as a "military clause." A military clause should provide for your release from the rental agreement, without penalty, if you receive

transfer orders. You may also want to request a clause that allows you to sublet the property while you're on deployment or away for training.

Most landlords will require a security deposit. According to the Hawaii Residential Landlord-Tenant Code the security deposit, including deposits for pets or keys, may not be more than one month's rent. When you move out the landlord has the right to use your deposit to return the unit to the level of cleanliness provided when you moved in, to pay for damages (excluding normal wear and tear) and to collect unpaid rent or pay for unreturned keys.

Once you sign a rental agreement you are legally bound to adhere to its conditions. Before signing, you should visit the the Family Housing Department to pick up a copy of the Hawaii Residential Landlord-Tenant Code. A customer service representative can review the lease and answer your questions. For more information, call 257-1257.



Sgt. William Ray

ASE Change of Command

Cal. M.H. Boyce receives the Aviation Support Element colors from Col. R.M. Flanagan. Boyce previously served as the deputy commander, MCB Hawaii.

FOR WOMEN ONLY ARE YOU FED UP WITH RELATIONSHIPS?

Do you feel they are just not worth it anymore? For inner strength, send for the laminated, wallet size, personal advice "Clarity Card" and become a member of "Sisters For Reality" (newsletter to follow).
Send \$15 check or money order to:
Susan Faith Rubin
Box 420, Kilauea, HI 96754

MILITARY LOANS UP TO \$2,500

- NO ADVANCE FEES.
- REPAY MONTHLY.
- PROMPT FRIENDLY.

24 HOUR HOTLINE
623-3838
U.S.A. FINANCIAL

MODELS WANTED

OPEN CALL FOR
Local Print/TV Commercials
ALL AGES & LOOKS NEEDED
For An Interview
Call **955-2271**
SusanPageModeling
AGENCY & SCHOOL



7 Waterfront Plaza, Suite 400
538-0477

San Francisco	\$219 OW	\$319 RT
San Jose	\$217 OW	\$319 RT
Sacramento	\$247 OW	\$349 RT
Ontario	\$217 OW	\$299 RT
San Diego	\$219 OW	\$299 RT
Boston	\$466 OW	\$618 RT

CRUISES

Holland America, Alaska, 7 days, departs wky, Inside Passage or Glacier route. Reg: Bahamas & Netherlands Antilles. RT air incl.
from **\$1560**

Holland America, Mythical Greek Isles, 12 days, departs Sept. 19, Reg: Bahamas. RT air incl.
from **\$4490**

Seabourn, San Juan to Ft Lauderdale, 5 days, departs Dec. 16, Reg: Liberian. RT air incl, transfers, precruise night hotel
from **\$1975**

American Hawaii Cruises Hawaiian Islands, 7 days, departs wky, Reg: American Flagship. Kamaina rate
from **\$995** two

Queen Elizabeth 2, Mediterranean, 10 days, departs Oct. 15, Reg: British Pre & Post Pkg avail. RT air incl.
from **\$3296**

Carnival, Mexican Riviera, 7 days, departs wky, Reg: Liberian. RT air to Los Angeles avail
from **\$599**

INTERISLAND

Air, Room & Car - Starting August, overnight specials on Interisland packages including tours. Now is the time to visit the outer islands before you rotate from Paradise. Various itineraries from **\$235** (Maui includes tour of Lahaina, Iao Valley, Haleakala - a dormant volcano)
Certain restrictions apply, fares subject to change

TO GET ANYWHERE IN THE MILITARY, YOU HAVE TO KNOW THE CODE.



ALWAYS GET THROUGH. NEVER GET OVERCHARGED.

You may not be able to control where the military takes you. But you can control how you get back. Instead of letting some unknown phone com-

pany overcharge you, know the code. Dial 1 800 CALL ATT™. From any base in the U.S., no matter how far away. Whether you are calling collect or

using a calling card or credit card. It is the one way home that you can count on. AT&T. Your TrueVoice™



Departing

From A-1

A: As part of the strategic plan to get us into the 21st Century, you have to get rid of old facilities. At the end of the strategic plan is a demolition plan, and that's what is occurring right now. It was important because when there were discussions at headquarters (Marine Corps) that the base would go away, a lot of military construction dollars were redirected elsewhere. Now that K-Bay is a viable organization, it's important for us to move on and get the things that Marines, Sailors and their families deserve. One of my first efforts was to get on the MWR policy board at Washington. I wanted to be able to participate in the discussion dealing with the decisions that would allow us to get some of those things. The PX issue was decided before I came aboard. However, that was for 14.7 million dollars. The retail outlets (beauty shop, book store, etc.) were going to be a half a mile away. That made no sense, so I went forward with a proposal to get those built in with the new PX and commissary. In a recent decision, the MWR policy board increased our project by six million dollars to build those retail outlets. We also received three million dollars to build a fitness

center.

Q: How has MWR changed under your command?

A: One of the biggest changes was designating the deputy commander of MCB Hawaii as the director of MWR. Also, all managers now have a budget that they are accountable for. The MWR advisory board, comprised of members from all organizations on base, must pass all decisions made by MWR.

Q: Which quality of life issue has been most important to you?

A: The barracks situation is an ongoing effort due to their age. We have put together numerous tiger teams in the 1000 series barracks to try to make them habitable. That's our fundamental priority. In the area of family housing, we've put a lot of money into the Cochran housing area. This housing area is thirty years old and requires a lot of maintenance. They'll be replaced in the near future.

Q: During your tenure as commanding general you've improved and brought back many athletic events, why was this important?

A: If you were to look at the DUI rates from two years ago to the present time, you would see that we only have 18 DUIs this year. Compare that to a couple of years ago when we had 150. Look at what Marines have to do around here on weekends. If we have sporting events that not only have participants but

spectators, then you give people an alternative for the weekend. In addition, under the direction of Lou LeGarie, we instituted the SMART (Single Marines Are Tops) program (a program designed to provide activities for single Marines and Sailors). He told me that last weekend we had Marines at Waimea Falls Park, assisting at Aloha Games and visiting the Polynesian Cultural Center. You can dive, go boating and get involved in a lot of activities on base. It's an effort to get people whatever they want to do on weekends, whether it's the CG's fitness series, varsity sports, tackle football, karate, or horseback riding. It allows people to do something other than sit around the barracks.

Q: What has been your most memorable event of the past year?

A: There were many memorable events. The one that gave me the most satisfaction, because so many people on base helped, was getting the money for the new fitness center, retail outlets, child care center and to be able to upgrade some of the barracks.

Q: What are your feelings about leaving?

A: Gail and I were married at the Base Chapel here in 1972, and we returned 20 years later to the day. We love Hawaii and the aloha spirit. It's a great place to be. We've truly been welcomed with open arms by the people of Hawaii.



BGen. David F. Bice



BGen. R. F. Vercauteren



Marine Corps Base Hawaii Change of Command



BGen. R.F. Vercauteren will relinquish command of Marine Corps Base, Hawaii to BGen. David F. Bice on June 19 at 10 a.m. at Dewey Square. BGen. Bice previously served as the Commanding General, 3d Marine Division, Okinawa, Japan. BGen. Vercauteren will serve as the Assistant Deputy Chief of Staff, Plans Policies and Operations (Plans) at Headquarters Marine Corps, Washington, D.C. The uniform for military personnel is camouflage utilities and aloha attire for civilians.

Now available at the COMMISSARIES
(Not Currently Available at Hickam or Fort Shafter)
by Popular Demand

AMERICAN
Met-RX
Metaform
Original & Chocolate Flavors

AMERICAN BODY BUILDING PRODUCTS
American Bodybuilding
Performance Drinks and Steel Bars.
Plus - Fat Burner Drinks and Fat Burner Supplements
at Unbelievably Low Wholesale Prices

NON-STOP TRAVEL

	ONE WAY	ROUNDTRIP
SFO	\$169	\$299
LAX	\$189	\$329
San Diego		\$319
Seattle		\$379
Las Vegas		\$359
Florida		\$649
New York		\$649
New Zealand		\$748
Vancouver		\$299
Alaska		\$429

New Extended Hours to Serve You Better!
Monday-Friday
8:30 am-6:00 pm
Saturdays
9:00 am-3:30 pm

**SERVING ALL ARMED FORCES
SPECIAL MILITARY
RATES AVAILABLE**

CALL 946-1484
711 KEEAUMOKU STREET - SUITE 209
NEXT TO THE LIKILIKE DRIVE-IN
FREE VALIDATED PARKING
CERTAIN RESTRICTIONS APPLY. TA #1076

DIVORCE-BANKRUPTCY

- Flat Fee
- Quick Court Settings
- Child Support/Visitation
- Custody Disputes
- Flat Fee
- Get Out Of Debt
- Stop Creditor Harassment
- Stop Collector Harassment

"Put your trust in an attorney who cares"

STEVE H. CEDILLOS

Executive Centre
1088 Bishop, Suite 1107
536-5242
(Phone 24 Hours)

HAWAII SPERM BANK

Phone: 487-2988

Single Women Eligible

**Back And Neck Pain Relief
From A Doctor You Can Trust**

MILITARY DISCOUNTS

Dr. Michael C. Young
B.S., D.C.

Dr. Lloyd Paredes
D.C.

HEALTH AND ACCIDENT CLINIC, INC.
262-5555
629 Kailua Road, #104
Kailua Town

YOUNG HEALTH CLINIC, INC.
488-6122
Stadium Mall
451Q Saif Lake Blvd., #85

NEW EXTENDED HOURS TO SERVE YOU BETTER!
Monday-Friday
8:30 am-6:00 pm
Saturdays
9:00 am-3:30 pm

**SERVING ALL ARMED FORCES
SPECIAL MILITARY
RATES AVAILABLE**

CALL 946-1484
711 KEEAUMOKU STREET - SUITE 209
NEXT TO THE LIKILIKE DRIVE-IN
FREE VALIDATED PARKING
CERTAIN RESTRICTIONS APPLY. TA #1076

KAILUA 4TH OF JULY 5K FUN RUN

to Benefit
WINDWARD SPOUSE ABUSE SHELTER

Since opening in 1992, the Windward Spouse Abuse Shelter has provided emergency shelter and counseling services for more than 500 battered women and children. For information about volunteering or donations, call 263-5335.

Sponsored By
Castle Medical Center

COURSE
5K - Single loop around Enchanted Lake in Kailua

STARTING TIME
8 a.m. SHARP! Tuesday, July 4, 1995
Enchanted Lake Park, 770 Keolu Dr., Kailua

ENTRY FEE
\$18 (non-refundable) all of which will benefit the Windward Spouse Abuse Shelter. Castle Medical Center will cover all race costs. T-shirt included with entry fee.

ENTRY DEADLINES
Entries must be received in the Castle Medical Center Marketing Department by Friday, June 23, 1995.

AWARDS, DIVISIONS
First three men and women in the following divisions: Elite: 14 & under, 15-19, 20-24, 25-29, 30-34, 35-39, 40-44, 45-49, 50-54, 55-59, 60-69, 70 and over, Racewalk, Wheelchair

RACE PACKET PICKUP
Race numbers and packets must be picked up between 7:00 a.m. and 7:30 a.m. on race day, Tuesday, July 4, 1995.

MAKE CHECK PAYABLE TO:
Windward Spouse Abuse Shelter

MAIL TO:
Castle Medical Center 4th of July 5K Fun Run
640 Ulukahihi Street, Kailua, HI 96734

INFORMATION
Call 263-5163

KAILUA 4TH OF JULY 5K FUN RUN
• 1995 ENTRY FORM

PLEASE USE INK AND PRINT CLEARLY.

Sex (circle one): M F
Race Division _____
Age on race day _____
Date of birth _____

FEES ENCLOSED:
☐ \$18 (non-refundable entry fee)
☐ \$ _____ donation only -

Last Name _____ First Name _____
Address _____
City _____ State _____ Zip _____
Telephone (daytime) _____ (evening) _____
T-SHIRT (circle one) Adult men's sizes: S M L XL

Signature/Parent or guardian if under 18 _____
Date _____

Let Smitty's Help You Say...

Thanks Dad!

Show your father how much you care by bringing him to Smitty's for a special treat on Father's Day.

— Sunday, June 18th —
Smitty's is Giving Gift Certificates to All Dads*

KANEOHE
Kaneohe Bay S.C.
46-077 Kam Hwy

KAILUA
Next to Foodland
108 Hekili Street

HOURS: 7am - 9:30pm

Smitty's
FAMILY RESTAURANT

*Offer valid at participating Smitty's Locations. While quantities last.

Safety

From A-1

actually be quite dangerous. For this reason, the lifeguards utilize a flag system to alert swimmers of the current water conditions. A red flag indicates that ocean entry is prohibited, and a red and a yellow flag together means that activities are restricted to individuals who are equipped with fins or a surf board. A yellow flag means that individuals should take caution while swimming.

Families can invite their friends to enjoy these activities, but there are certain procedures that must be followed.

Children enjoying the sunny afternoons of summer vacation on playgrounds or at activity centers may want to share the fun with their friends who don't live on base. All visitors who are not military personnel, or a family member, are required to have a sponsor.

Although there are no requirements for the age of a sponsor, if the guest is younger than 17 the sponsor must meet the friend at the Pass House, H-3 gate, Kaneohe Bay, or building 601, MCB Hawaii, Camp H. M. Smith. As

long as the visitor is 17 years old or older, the sponsor may call the Pass House and give advance notice of the visit to the military police.

Sponsors are required to provide their name and telephone number, their guest's name, expected time of arrival and destination. When the guest arrives, the military police will verify the visit with the sponsor by telephone and allow the guest to proceed. The MPD requires that visitors provide a drivers license or other means of positive identification.

Base regulations also state that once guests are admitted to the base, the sponsor is responsible for the visitors actions and are required to ensure base regulations are enforced. One step that is being taken to augment safety is the increase of presence by the military police, and the crackdown on speed violators.

"The number of foot and bicycle patrols will be increasing soon," said Sgt. Woodrow Owens, Crime Prevention, Military Police Department, MCB Hawaii, Kaneohe Bay. "We want to get out into the community so that the residents can become familiar with us."

The Military Police Department will soon have new equipment to handle the increasing problem of

speeding traffic violations. With children starting their summer vacations, there is an increased concern for safety on and near streets.

"We're conducting speeding surveys to determine where the trouble areas are," said SSgt. Theodore Marling, traffic chief, Military Police Department, MCB Hawaii, Kaneohe Bay.

Marling explained that the speeding problem seems to be prevalent in the housing areas where there is a large concentration of pedestrians. A lot of emphasis will be on enforcing the speed limit. Military police will also be enforcing regulations focused on ensuring the safety of the youth after daylight hours.

As the sun begins to settle, there is another regulation that parents should consider. MCB Hawaii adheres to the Hawaii curfew law. This states that children under the age of 16, who are not accompanied by an adult, will be clear of public places and streets between 10 p.m. and 6 a.m. The curfew has a 30 minute tolerance if a child is proceeding directly to or from a scheduled event. Violators of this curfew will be issued a minor offense report or an incident complaint report, and their parents will be notified.



LtCol. Richard J. Ingold



LtCol. Richard Monreal

1st Radio Battalion Change of Command

LtCol. Richard Monreal, commanding officer, 1st Radio Battalion, will relinquish command to LtCol. Richard J. Ingold on Friday at 10 a.m. at Dewey Square, MCB Hawaii. Monreal will be leaving for the Inter-American Defense College, Washington D.C. Ingold served on the staff of the Commander in Chief, Pacific Fleet. The uniform for military personnel is camouflage utilities and for civilians it is aloha attire.



Bring the world into your home.



For more information call Hawaii Homestay at 263-0544

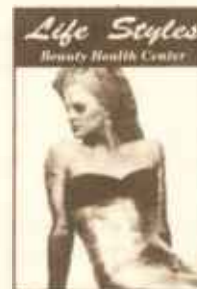


"If you're serious about finding a relationship, you must call me."

Stop looking in singles bars and in health clubs. Stop wasting precious time on one mob scene after another. People come to me because they know my record of success. Don't put off that phone call. It could lead to the most important introduction of your life. Call today for a confidential appointment.

COMPUTDATE • 536-3804

Lisa Collin
Date Counselor 1188 Bishop St., Ste. 611 Downtown Honolulu



PAMPERING BODYWRAPS!
Lose 4 to 14 Permanent Inches In 1 Hour!

Since 1961 Beneficial's European Intensive Contour, Cosmetic, Therapeutic and Cleansing Treatments...

- Guarantee To Take Off Inches On The First Wrap
- Unique Natural Herbs Are Safe, Relaxing And It Works
- Eliminating Toxic Waste That Clogs Your Lymph System
- Restoring Circulation To Problem Areas
- Rejuvenating Loose Skin And Stretch Marks
- Cellulite - Not A Water Loss Treatment

PRIVATE ROOMS AND CLINICAL ATMOSPHERE
Mon-Sat By Appt. 236-4400 • 45-955 Kamehameha, #207

BODYWRAP
\$45⁰⁰ w/ad
Reg. \$70
BOTH WRAP & FACIAL
Reg. \$115
\$59⁰⁰ w/ad
Offer Expires 7/5/95
Gift Certificates

PALI PALMS DENTAL CENTER DENTAL SERVICES

General Dentistry • Preventative and Restorative Dentistry
Cosmetic and Esthetic Procedures

INSURANCE ACCEPTED: HDS, HMSA, Delta Dental Services (Military),
Hawaii Dental Health Plan

Dr. Alan M. Yugawa, DMD
Office: 254-6477
970 N. Kalaheo Ave., A-108
Kailua, Hawaii 96734

Dr. Derek Ichimura, DMD
Office: 254-6694
970 N. Kalaheo Ave., A-108
Kailua, Hawaii 96734



Come DANCE! With Us!

Summer Classes
June 19 Through August 19
Saturday Classes Available
New Students (3 - adult) Now Being
Accepted
Pre-Ballet, Ballet, Pointe, Tap, Jazz, & Hula

254-3116

B.J. Leilani Van Scoy-Martin, Director
2 Masters Degrees In Dance
Nat'l & InterNat'l Teacher/Performer - Member Of:
D.M.A., D.E.A., P.D.T.A., C.N.A.D.M., I.T.A., H.S.D.C.



The Hawaii Academy Of Technology PRESENTS...RIDE THE INFORMATION HIGHWAY

Learn the INTERNET System & How
To Use It For Business & Education!

Topics To Be Covered:

- Electronic Mail (E-MAIL) • Netscape • Turbogopher
- Eudora • Telenet

Classes Held At
St. Mark Lutheran School
45-725 Kam Hwy., Kaneohe

Classes For All Ages • Registration \$45
Small Classes • Individualized Attention • Flexible Schedules
CLASSES START June 26th • Space Is Limited



Call today!
247-5708

Motorola
RENEGADE
•10 message slots
•Single button use
•Music & Vibrate alert
\$39⁹⁵ \$80.73
Complete & includes
1st month service



Just in time for
FATHERS' DAY!



Motorola
BRAVO EXPRESS
•Large display for easy viewing
•15 message slots
•Standard warranty
•Time stamp
•Beep & vibrate options
•Programmable on/off
\$79⁹⁵ \$102.40
Complete & includes
1st month service



Motorola
MEMO EXPRESS
•Large display for easy viewing
•15 message slots
•Standard warranty
•Time & date stamp
•Music & vibrate options
•Programmable on/off
\$89⁹⁵ \$112.82
Complete & includes
1st month service



Motorola
ADVISOR
•4 line display w/ 80 characters
•20 message slots
•Time & date stamp
•Beep & vibrate options
•Retains messages when off
•Built-in alarm clock
•Avail in 8 colors
\$119⁹⁵ \$156.81
Complete & includes
1st month service



Motorola
BRAVO PLUS & LIFE-STYLE PLUS
•15 number memory •Call reminder
•Priority message lock
•Beep & vibration options
•Time stamp •Standard warranty
\$69⁹⁵ \$91.98 - Complete
& includes 1st month service



Complete & includes
1st month service

\$20⁰⁰ OFF ANY PAGER WHEN PURCHASING 1 YEAR ADVANCE SERVICE

The Country Cottage Craft Boutique

4th of July is Just Around the Corner
Come Check Out Our Americana Line
A Sure Bet To Make Your
Holiday More Festive!!!

Mon-Sat 9:30-5:00 • 263-5949

326 Kuulei Rd. across the parking lot from Cinnamon's

Knot Another Tie.

1-800-COLLECT[®]

Call Dad and save him up to 44%.

Briefs

The Transition Assistance Management Program will be offering the following classes in the month of June:

Sponsorship training — This training is mandatory for all those assigned as sponsors to inbound Marines and Sailors; provides a complete outline of duties of a sponsor. The class is scheduled for June 23 from 2-3 p.m. at TAVSC, classroom 2.

DORS workshop — The Defense Outplacement and Referral System workshop will focus on completion of the DD Form 2580, which will allow individuals seeking employment to place their qualifications in a database where up to 6,000 employers have access. The workshop will be held Friday from 9-11 a.m. at TAVSC, classroom 2.

How to get a federal job — Learn how the federal selection and hiring process works. If you are considering federal employment this workshop is a "must." The workshop will be held June 20 from 8-10:30 a.m. at TAVSC, classroom 2.

Financial planning — This workshop covers time value of money, retirement planning, funding methods, investment strategies and goal setting. The workshop will be held June 22 from 9-11 a.m. at TAVSC, classroom 2.

Interviewing basics — This workshop provides a general overview of the interview process. The workshop will be held June 27 from 9-11 a.m. at TAVSC, classroom 2.

For more information or to register for any of the above classes, contact the TAMP office at 257-3135.

TQL nominations

Nominations are being accepted for the following courses in Total Quality Leadership training:

TQL Statistics — This two-day class will be held June 29-30 at Training and Audiovisual Support Center, classroom 1.

TQL Awareness — This one-day non-supervisory class will be held July 14 at TAVSC, classroom 1.

Fundamentals of TQL — This three-day class will be held July 18-20 at TAVSC, classroom 1.

TQL Awareness — This three-day supervisory course will be held Aug. 15-17, classroom 1.

Nominations for these courses should be submitted in writing to Commanding General (TQL), Marine Corps Base Hawaii, Box 63002, Kaneohe Bay, MCB Hawaii, 96863. All inquiries, scheduling and coordination should be directed to Bill Lang, TQL manager at 257-2130.

ASYMCA

To sign up for any of the following programs/classes, or for more information, call 254-4719 or 254-4965. The Armed Services YMCA helps pay for child care while you attend classes.

Dog obedience — This six week class is offered on Sundays from 4-5 p.m. in the courtyard of building 216. Our expert John Skidmore will be starting June 25. The fee is \$25.

Excursions — A special excursion is scheduled on June 27 from 8 a.m. to 1 p.m. The cost is \$7 for adults, \$5 for children 5-10 years old and \$2 for children 2-4 years old. It is free to children under two. The transportation is available for the first 10 people who sign up.

Plus Aquatics — Certified instructor helps you beat the heat and stay fit. Call now to register for this class.

Hula Class — Hula classes for children ages 3-12. The class meets every Saturday at our office from 8:30-10:30 a.m. The fee is \$40 a month. Women's hula class is also Saturdays from 9:30-11:30.

Hawaiian quilting class — Join Mary Haunani Ceaser in learning about designs, how to applique, how to quilt and mark quilt lines Hawaiian style. Sign up now for this 10-week course. The fee is \$40. The class begins June 13 from 6-8 p.m.

Hearts apart — The group meets on the second and fourth Wednesdays between 11:30 a.m. and 1 p.m. Bring your own lunch. Some upcoming events include speakers on marriage in the Marine Corps and excursions to outlet malls.

Creative Twist basket — Instructors Jonna Lengreder and Belinda Garcia will be creating baskets which are sturdy for all occasions using twisted paper, material and paper bags. Bring your own

glue sticks, glue gun, one dozen clothes pins, scissors, a spool of thread/needle and five large grocery bags. The fee is \$15. The class will be held June 20, 9-11 a.m.

Sewing classes — This is your chance to bring your sewing machines out and learn to sew with Debbie Thomas. The two-day workshop will be held June 6-7 from 9 a.m. to noon. The fee is \$15.

Swap meet — The swap meet will be held Saturday from 8 a.m. to 3 p.m. Sellers are welcome. For more information call 254-4719 or 254-4965.

K-Bay FSC

Overeaters anonymous — Group support to help with over eating behavior using the 12-step approach of AA. Meets every Friday at the FSC from 7-8 p.m.

Fighting for your marriage — The Prevention and Relationship Enhancement Program is a research-based approach to teaching couples constructive arguing and problem-solving skills. The six-week course is scheduled to be held on Wednesdays or Thursdays from 5:30-7:30 p.m.

Women's group — Focuses on safety, self-esteem, anger and stress management. The group is held every Thursday from 2-4 p.m. Please call Melody for more information at 257-3655.

Healing your inner child — A weekly support group will be held on Mondays from 3:30-5 p.m. to help people who have had painful childhood experiences that they wish to confront. Participants must call for a screening appointment.

Marriage skills workshop — A 14-hour workshop for newly married couples and people anticipating marriage will be held June 27-28 from 8 a.m. to 4 p.m. at TAVSC. Reservations are required.

Stress Management Workshop — Learn to handle stress effectively at home and at work. The workshop will be held June 28 from 1-4 p.m.

Parenting teens — A brown bagger series of the Active Parenting of Teens video-based program will be held every Thursday until June 29 from 11:30 a.m. to 1 p.m. Call for reservations, 257-3655.

For information on any of the above classes or reservations, call 257-3655.

Red Cross

The Red Cross is offering the following courses in June and July:

Community First Aid and Safety — June 21-23.

CPR for the professional rescuer — June 23-24.

Community First Aid and Safety — July 19 - 21.

CPR for the professional rescuer — July 21-22.

Preregistration is required for the above courses and the cost is \$27 and the civilians cost is \$48.

Teenage volunteers — Join the American Red Cross Summer Youth Program. Volunteer at the many different agencies on board Marine Corps Base Hawaii. Some participating agencies this summer include Base Facilities, Family Housing Department, Base Pool, Medical Clinic, Human Resource Center, and many more. Receive valuable training and learn skills you may need in the near future. American Red Cross courses scheduled for this summer include disaster training, Standard First Aid, HIV Awareness, and a field trip to the American Red Cross Hawaii State Chapter. Come join the fun, meet new people, and fill your summer with a valuable experience you will never forget. Registration through today and orientation is Friday.

VolunTEEN Chairman — The Red Cross is in need of a VolunTEEN Chairman to coordinate in the VolunTEEN program this summer. The program provides teens the opportunity to volunteer for various agencies on the installation, giving them work experience within a specific career field.

Volunteers — The Red Cross is looking for volunteers in several areas. Assistance is needed for filing, light typing and reception work at the Legal Center and Medical clinic. The Red Cross Office needs a volunteer receptionist to check service members in and out from 8 a.m. to noon Monday through Friday.

The Red Cross hours of operation are 7:30 a.m. to 3:30 p.m., Monday-Friday. Check ins/out are 7:30 a.m. to noon, Monday-Friday. For emergencies call 257-3150 or 471-3155. The Pearl Harbor Service Center is open 24 hours a day to include financial assistance. Emergency communication

specialists can do aid society loans after hours. The Red Cross office is located in building 216, next to the Family Service Center.

CREDO

CREDO PGR — The next CREDO Personal Growth Retreat is scheduled for June 22-25. Retreats are open to all active duty, authorized family members and DoD civilians. Only one member of a family may attend any particular retreat so individuals may feel free to be open and honest. Meals, lodging and transportation will be provided. For more information or to reserve a space call 257-3618/1843

CREDO group — CREDO Hawaii will hold a open group meeting today at building 1368 at 6:15 p.m. Open group is a continuation of the follow-up meetings you attended after your PGR (CREDO I). It's a great way to reconnect with the CREDO family. If you have ever been to a CREDO Personal Growth Retreat at any site you are eligible to attend. Call 257-1843/3618 for more information.

Volunteers needed — Are you a trained CREDO team member or facilitator from one of the six sites around the world? CREDO Hawaii needs you! If you are a former participant who is interested in pursuing the requisite training call 257-1675 for more information.

Job hunting

A computerized listing of on-island jobs is available at the Employment Resource Center. Call 257-3135 to make an appointment with a counselor.


Retired activities

A Retired Activities Office has been established in building 216 aboard MCB Hawaii, Kaneohe Bay to provide the retired community with a focal point for information and retiree business aboard the base. The program is in need of retiree volunteers to help meet staffing goals. Office hours are 7:30 a.m. to 4 p.m., Monday-Friday. For more information on services or to volunteer call Mae Ooka at 257-3135.

Serta's Great 1995 Summer SALE



WE MAKE THE WORLD'S BEST MATTRESS®



HURRY IN!

JUNE 16 - JUNE 26

Sertapedic Limited Twin, 2 pc. set (Reg. \$214) . \$148 Full, 2 pc. set (Reg. \$245) . \$184 Queen, 2 pc. set (Reg. \$276) \$227 King, 3 pc. set (Reg. \$427) . \$299	Sertapedic Adventure Twin, 2 pc. set (Reg. \$272) . \$207 Full, 2 pc. set (Reg. \$325) . \$256 Queen, 2 pc. set (Reg. \$401) \$316 King, 3 pc. set (Reg. \$519) . \$407	Serta Perfect Sleeper Opal Twin, 2 pc. set (Reg. \$267) . \$257 Full, 2 pc. set (Reg. \$421) . . \$318 Queen, 2 pc. set (Reg. \$519) \$393 King, 3 pc. set (Reg. \$699) . \$517
Serta Perfect Sleeper Exquisite Twin, 2 pc. set (Reg. \$375) . \$291 Full, 2 pc. set (Reg. \$489) . . \$365 Queen, 2 pc. set (Reg. \$599) \$452 King, 3 pc. set (Reg. \$789) . \$586	Serta Perfect Sleeper Avondale Twin, 2 pc. set (Reg. \$419) . \$300 Full, 2 pc. set (Reg. \$549) . . \$373 Queen, 2 pc. set (Reg. \$679) \$466 King, 3 pc. set (Reg. \$819) . \$601	Serta Perfect Sleeper Ultra Twin, 2 pc. set (Reg. \$449) . \$358 Full, 2 pc. set (Reg. \$599) . . \$449 Queen, 2 pc. set (Reg. \$719) \$559 King, 3 pc. set (Reg. \$929) . \$719

FREE HOME DELIVERY & SET-UP DIRECT FROM THE FACTORY!!

Marine Corps Exchange

MCX

A DIVISION OF MICHAEL, WITKAL & ASSOCIATES • KANELOHE, HAWAII

Making It Easier To Make Ends Meet!

Home Interiors

Hours: Monday-Friday 11am to 7pm
Saturday-Sunday 10am to 5pm

This advertisement was not paid for, in whole or in part, by the Marine Corps or the Marine Corps Exchange. This advertisement does not constitute an endorsement by the Marine Corps Exchange, the Department of the Marine Corps or the United States Government of the products or services advertised.

Volunteer For Active Duty.

When you're in the mood for active good times, make the Hale Koa your top priority. Volunteer your family and friends, too. From R & R on the best stretch of beach in

Waikiki to dancing in the Warriors Lounge, if it's fun, it's here.

If you're ready for fun at the beach, everything's here, including sand volleyball courts. At our Beach Rental Hut, you'll find all you need to snorkel, surf, windsurf, canoe and kayak. Or ride the waves on a Hobie Cat, aquacycle or boogie board.

If you're into physical fitness, work out at our Fitness Center and enjoy a sauna after. If tennis is your game, sharpen your serve on one of our three courts.

Then when it's time to mellow out, retire to one of our lounges, refuel in one of our restaurants, or watch our entertainers get active. Come for Tuesday's Magic show, Wednesday's Polynesian Revue or Thursday's Luau. It's all just for you!



HALE KOA HOTEL

"Come For The Fun Of It"

ARMED FORCES RECREATION CENTER
On The Beach At Waikiki
2055 Kalia Road • Phone: 955-0555



Front and Center



LCpl. Robert E. Hawkins

Sgt. Lou Genzer

Sgt. Lou Genzer

Staff writer

It's natural to expect an adrenaline rush from a roller-coaster ride or a bungi jump, but LCpl. Robert E. Hawkins recently experienced an adrenaline rush of a different sort, while saving the life of another human being.

On their way home from Waikiki, Hawkins and LCpl. Richard Freeman, saw a car impacted into a stone wall just before entering the Pali Highway.

"The car was smoking, so we stopped about 100 feet away from it," said Freeman. "We could see the passengers had injuries so we didn't want to move them."

But when they saw the flames coming out of the car and rapidly engulfing its front end, Hawkins and Freeman knew they were going to have to move quickly. By this time, onlookers had started gathering around the flaming vehicle.

"We were surprised at the lack of help we received," Hawkins said.

The two young Marines from Golf Company, 2nd Battalion, 3d Marines, continued to remain calm and keep the situation under control.

While Freeman pulled the driver out the door and got him to safety,

Hawkins explained much of the

Hawkins was having a difficult time getting the passenger out of the vehicle. The passenger door was jammed shut. Hawkins went in through the window and was able to undo the seat belt. Slowly, Hawkins and a bystander removed the victim through the window.

"We had to do a type of chair carry, because his leg was injured," Hawkins said.

Once the injured sixteen year-old was safely out of the car, Hawkins and Freeman began performing first aid.

According to Freeman, the passenger apparently had a fractured ankle and was also complaining of chest pains.

Hawkins treated him for shock and attempted to keep his mind off the injury while Freeman kept the ankle off the ground.

"We waited there until the fire and police departments arrived," Hawkins said. "The next day we tried to find out how the two kids were doing but were unable to get any information through the police or hospitals."

Hawkins said on their way home they still could not believe what had just happened.

"We used a lot of the training we had learned in the Marine Corps, especially first aid. Everything seemed routine," Hawkins said.

Hawkins explained much of the

knowledge he used to save the two victims was attained in his field as an infantry man. Upon enlisting in the Marine Corps in June 1993, Hawkins knew being in the infantry field was exactly what he wanted to do.

"I couldn't see myself behind a desk. I have always liked the outdoors, so I requested to be a grunt," said the Martinez, Calif., native.

Hawkins is highly enthusiastic about being a Marine. It was his enthusiasm which made him excel in bootcamp and get promoted to the rank of private first class.

He continued to show his motivation throughout the school of infantry at Camp Pendleton, Calif., and was given the position of fire team leader. Upon completion of the school, he was promoted to lance corporal.

"When you are put into leadership positions you want to excel. You want to push harder when you know there are people looking up at you," said the 19 year-old.

Shortly after arriving at G Co., 2/3 in January 1994, Hawkins departed to Okinawa on the Unit Deployment Program, where he deployed throughout the Pacific.

Although only in the Marine Corps two years, Hawkins said he has learned to be more responsible.

PAID ADVERTISEMENT

1995 CONSUMER BUSINESS REVIEW

"Save This Review. These Are Businesses You Can Trust"



LAW OFFICES OF LAURIE A. LOOMIS

Private Placement Adoptions
Representing Birth Parents & Adoptive Parents
Phone 524-5066

When adoption is the best choice for creating or expanding your family, it's important to retain an attorney who concentrates her practice on adoption. LAURIE A. LOOMIS has 10 years experience in adoption. She knows the emotional struggles you are now facing.

Are you pregnant? LAURIE A. LOOMIS offers FREE legal counseling, help with medical expenses, counseling and living expenses, as well as, open adoption (you meet and choose the parents for your baby).

For adopting parents, MS. LOOMIS can assist in matching you with birth parents in an effort to find the perfect child for you.

LAURIE A. LOOMIS invites you to call the office at 524-5066 and make an appointment to visit her at 1001 Bishop, Suite 1360, in Pacific Tower, in Honolulu, and learn more about your legal rights and obligations. Your adoption matters will be handled professionally and confidentially.

No two adoptions are ever the same. You should investigate all your legal options.

The editors of this 1995 CONSUMER BUSINESS REVIEW urge our readers to contact LAURIE A. LOOMIS to handle your adoption matters efficiently and effectively. You'll be glad you have found an attorney with the experience, care and dedication you and your family deserve. With pleasure we recommend LAURIE A. LOOMIS to all of our readers.

KRUEGER AND CAHILL

Attorneys At Law

James Krueger * Peter T. Cahill * John M. O'Neill
Practice Limited To Death And/Or Serious Injury
Phone 536-7474



Being in the wrong place at the wrong time can happen to anyone at any time. If you or someone you care about are involved in an accident, or are a victim of an untimely or unforeseen mishap, you may need the services of KRUEGER AND CAHILL regarding your injury claim.

Many times, these accidents are caused by someone's carelessness or neglect. That's when KRUEGER AND CAHILL can help. Call their office at 536-7474 for an appointment.

They will be glad to help you find answers to your questions and investigate your situation. If justified, KRUEGER AND CAHILL will assist you in obtaining appropriate compensation for your injury. All damage claims, if accepted, will be handled on a contingency basis (you pay only a percentage of the amount awarded to you plus costs).

The worst things can happen to anyone. You should be aware of your legal rights.

The editors of this 1995 CONSUMER BUSINESS REVIEW recommend you seek the assistance of JAMES KRUEGER, PETER T. CAHILL and JOHN M. O'NEILL. They care about your problems, and invite you to call 536-7474 and make arrangements for a free initial consultation. You'll be glad you found a law firm you can depend on.



CUTTER MITSUBISHI DODGE

Sales * Leasing * Parts * Service
Phone 671-2626



An automobile is the second largest purchase you're likely to ever make. It is extremely important to know the reputation of the dealership you will trust this investment to.

How does the new car buyer know which automobile is best for him or her? Well, as the saying goes, "If you don't know cars...know the man you buy from." That means knowing CUTTER MITSUBISHI DODGE at 94-149 Farrington Hwy., in Walpahu, your authorized representative for MITSUBISHI and DODGE cars and hard workin' trucks and vans. Besides offering a full line of quality MITSUBISHI and DODGE products, they base their success on one simple fact of good business: Keep the customer satisfied!

Customer satisfaction only begins in their showroom and continues through their service department where skilled technicians, and the latest diagnostic test equipment assure you that your new automobile will "keep you satisfied" for many years to come.

If your budget can't quite stand the strain of buying new, stop in and look over the lot full of values in previously owned vehicles...they've all been safety checked and will give you many miles of driving pleasure.

The editors of this 1995 CONSUMER BUSINESS REVIEW recommend you take your automotive business to a firm which appreciates it. We, once again, endorse and recommend CUTTER MITSUBISHI DODGE to our readers.

HOT LICKS GUITARS

The Amp & Guitar Specialist

"Hawaii's #1 Music Store As Voted By Readers Of Guitar Magazine"

Honolulu - Mon - Sat 11 AM to 6 PM - Phone 591-8686

Pearl City - Tues - Sat 11 AM to 6 PM * Sun NOON to 4 - Phone 456-1000

*Check Out The Selections Of Ukeleles (Koas) Take One Home

Get it on! With the very latest in fine quality electric guitars and amps from HOT LICKS GUITARS at 1344 Young, Suite 3, in Honolulu, and at 897 Kam Hwy., in Pearl City. This leading supplier of musical equipment features everything in electric guitars, basses, PA sets, amplifiers, and everything else you need to really come across to your audience. You can get enough equipment to fill the largest auditorium or concert hall with your music.

HOT LICKS GUITARS Hawaii now offers expert repairs on guitars, amps and other equipment. One stop does it all! Whether your music requires the "heavy" sound of today's rock or the mellow notes of country or pop...you'll find the perfect combination of guitar and amplifier to make it sound better. They offer liberal trade-ins on your present equipment and rental/purchase plans for those who are undecided. Lessons are available from working pros at reasonable rates. You'll also want to inspect their large selection of music books.

The editors of this 1995 CONSUMER BUSINESS REVIEW, once again, take this opportunity to extend our congratulations to HOT LICKS GUITARS for their excellent service AND their quality lines of musical equipment. They really know where it's at!!!



TAI HSUAN FOUNDATION ACUPUNCTURE & HERBAL CLINIC



Lily Siou, PHD - Clinical Director

Acupuncture, Herbs - College - V.A. Approved

Phone 947-4788 Or Toll Free 1-800-942-4788 * FAX 947-1152

ACUPUNCTURE has been in practice for centuries. The theory of ACUPUNCTURE rests in the thesis that illness is always accompanied or caused by disturbances or imbalances of the body's energy flow. ACUPUNCTURE seeks to restore the normal flows of energy in the energy pathways, called meridians.

Many people do not realize that there have been numerous instances of illnesses which have not responded to Western medicine that have been treated successfully with ACUPUNCTURE.

TAI HSUAN FOUNDATION ACUPUNCTURE & HERBAL CLINIC is in Puck's Alley, 2600 S. King, Suite 206, in Honolulu. They are dedicated to providing qualified treatment for diverse ailments such as: pain control, addictions, headaches, arthritis, stress control, and many other chronic problems, and use only disposable needles.

They have been instrumental in the growth and acceptance of ACUPUNCTURE as an acceptable alternative for chronic disease.

TAI HSUAN FOUNDATION ACUPUNCTURE & HERBAL CLINIC has the only fully accredited program in the state of Hawaii. They offer a Masters Degree in Acupuncture and are V.A. approved. They provide foreign student visas and financial aid is available.

Call today for a complete information package including catalog, application, etc., and see how easy it can be to acquire a career that will benefit you for the rest of your life.

The editors of this 1995 CONSUMER BUSINESS REVIEW highly recommend TAI HSUAN FOUNDATION ACUPUNCTURE & HERBAL CLINIC to our readers.



Tinting Is The Answer * High Quality Personalized Service

Largest Selection Of Metalized Films

"We Always Give Extra Service"

Family Owned & Operated

Honolulu - 593-8852 * Kaneohe - 236-4139

Many companies offer solar tinting. How does the consumer determine which company will give them the most value for their money? Quality products are of the highest importance, of course. Reasonable prices and a proven ability to do the job right are also very important factors. ECLIPSE GLASS TINTING OF HAWAII with 2 locations: 721 Auahi St., in Honolulu; and 48-144 Kahulipsa St., in Kaneohe; is a company you can depend on for all your solar tinting needs.

Heat problems in office buildings, homes and automobiles can be solved with the help of ECLIPSE GLASS TINTING OF HAWAII. Window tinting reduces electrical consumption because the air conditioning in your home or office operates less and at a lower load.

The editors of this 1995 CONSUMER BUSINESS REVIEW urge our readers to explore the advantages of window tinting...and when you do, look to the best...ECLIPSE GLASS TINTING OF HAWAII!

Evening Parade



A candid moment — Gen. Richard Hearney, Assistant Commandant of the Marine Corps and his wife Margaret were greeted with a warm aloha upon their arrival in Hawaii.



Stay motivated — LtGen. Charles C. Krulak, Commander, Marine Forces Pacific, spoke to members of the parade immediately following the ceremony.



Bidding farewell — Mrs. Zandi Krulak, wife of LtGen. Charles C. Krulak, receives a lei from LtCol. Dave Wilson, LtGen. Krulak's aide, during the ceremony.



Leaders standing proud — (From left to right) Gen. Richard D. Hearney, Assistant Commandant of the Marine Corps, LtGen. Charles C. Krulak, Commander, Marine Forces Pacific, and MGen. J.D. Howell Jr., Deputy Commander, Marine Forces Pacific, review the troops during the pass and review portion of the ceremony.



Many representatives — Representatives from Marine units throughout the Pacific were on hand to honor Gen. Hearney and bid farewell to LtGen. Krulak who will be going to Headquarters Marine Corps as the 31st Commandant of the Marine Corps.



Motivating music — The Marine Forces Pacific Band provided musical support for the evening festivities.



Headed to D.C. — LtGen. Krulak pumps his fist enthusiastically as the evening parade ends.



Honored guest — Gen. Hearney, seated along side his wife, Margaret, was the honored guest at the evening parade hosted by LtGen. Charles C. Krulak.



The next Commandant — LtGen. Krulak stands front and center on the parade deck as the cannons fire and members of the ceremonial units render honors. The Koolau mountains provided a picturesque backdrop for the evening parade.



Sgt. Marlon Martin

MarForPac Sergeant Major Post and Relief

SgtMaj. Lewis G. Lee addresses the Marines of MarForPac at the Post and Relief ceremony held Friday at the Camp H.M. Smith flag pole. Lee will be going to Headquarters Marine Corps to serve as the 13th Sergeant Major of the Marine Corps. SgtMaj. Joel S. Williams is the new MarForPac Sergeant Major.



Sgt. Marlon Martin

Marching proud for the King

Members of the Marine Forces Pacific Band march down the streets of Honolulu during the annual King Kamehameha Day parade. The band along with members of Combat Assault Company, 3d Marines and Marines of a Joint Service Color Guard were among those who participated in the largest parade in Hawaii.

HAWAII HANA		Fares Are Applicable From Honolulu or Mainland	
1481 S. KING ST. #125 • CALL 951-8448		TA2302	
	O/W	R/T	
LAX	159	279	MINNEAPOLIS/ST. PAUL 299 509
SFO	159	279	ATLANTA 309 549
SAN DIEGO	189	319	NEW YORK/DCA 309 549
ALBUQUERQUE	229	429	CINCINNATI 299 509
PHOENIX	189	329	SALT LAKE CITY 189 359
SEATTLE	169	279	ORLANDO 309 549
DENVER	279	519	BOSTON 309 549
DALLAS/FT. WORTH	299	519	TAMPA 309 549
CHICAGO	299	509	NORFOLK 309 549
HOUSTON	299	519	SAN ANTONIO 279 509
OMAHA	259	479	CHARLOTTE 309 549
DETROIT	299	519	SHREVEPORT 299 519
INDIANAPOLIS	259	499	CLEVELAND 299 509
NEW ORLEANS	299	509	KANSAS CITY 249 469
MEMPHIS	319	549	BIRMINGHAM 309 549
NASHVILLE	289	509	PHILADELPHIA 309 549
PORTLAND, OR	169	279	

Some Restrictions May Apply
PLUS TAX



Harry's Cafe

*Hawaiian Ambiance
Reminiscent of Days Gone By*

Lunch 11am - 3pm
Mediterranean Dinner 5:30pm - 9pm
Smoke-Free Dining

629 Kailua Road



261-2120

Closed Sunday

COUPON

maxon Pager



\$19.95*

\$50.99
Out The Door!

8# Memory
Alert & Vibrate
Free Chain w/ pager purchase!

ISLAND PAGE

Located at Waikale Center, next to Computer City
Coupon must be presented at time of purchase.

Other Pagers

Bravo Plus '\$56"
Lifestyle Plus '\$56"
Everon '\$49"
*Requires activation & one month service
Limit 5 per household. Good while supplies
last or June 30, 1995

We Turn On Pagers!

Call

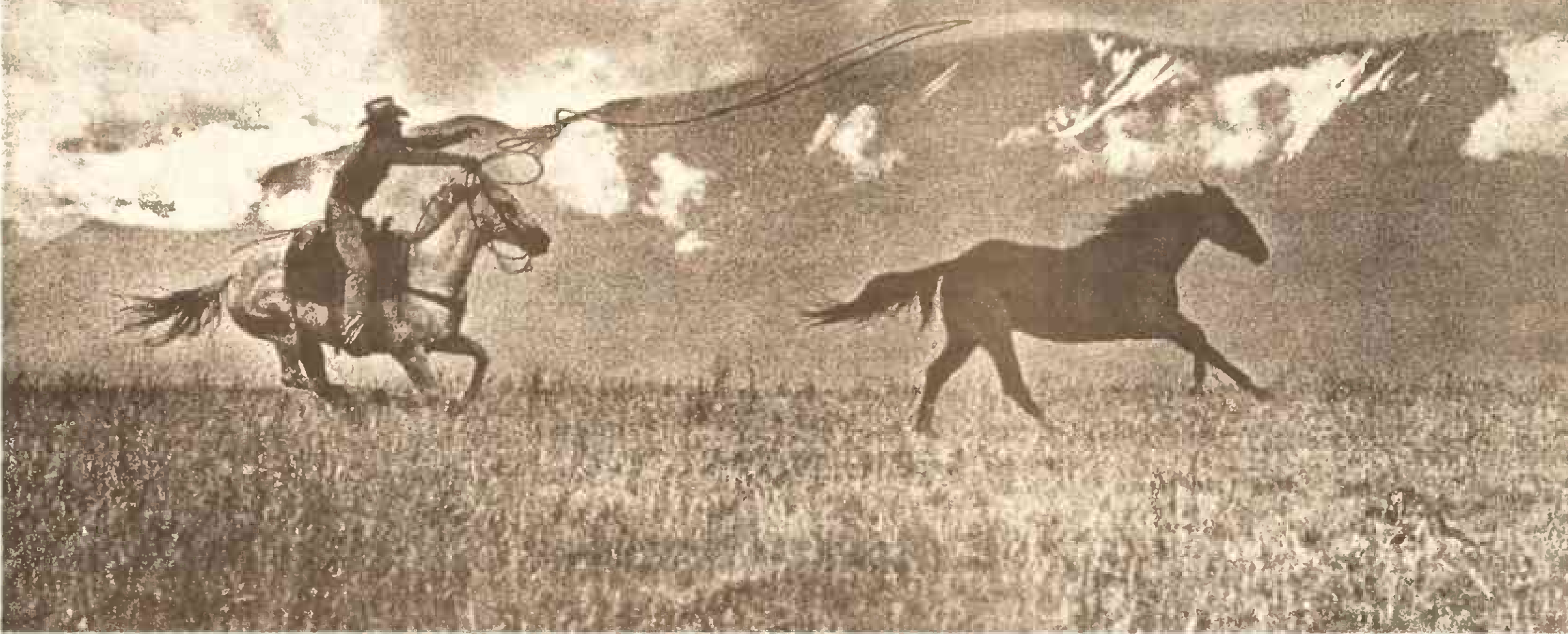
and Compare!

676-7722

SURGEON GENERAL'S WARNING: Quitting Smoking
Now Greatly Reduces Serious Risks to Your Health.

16 mg "tar," 1.1 mg nicotine av. per cigarette by FTC method.
© Philip Morris Inc. 1995

Come to
Marlboro Country.



Marine seamsters at Canvas Repair Platoon keep Corps readiness covered

Sgt. Jesse Faleris
Staff writer

Olive drab, khaki brown and green, cloak all but the white that surrounds the dark pupils of a calm alert face. The eyes dart from left to right and back again, before the body lunges from it's cover of vegetation and darts across a dirt trail. A short deliberate hand signal sends three additional camouflage Marines racing across the danger area. The rumble of mortar fire and the poignant odor of phosphorous become stronger, as the Marines continue their advance. Several miles fall beneath the boots of the troops, who press on toward their objective. Finally, the call, "halt who goes there!" is belowed from the listening/ observation post. With a pistol in his right hand and a sewing kit in his left, the camouflaged Marine replies, "Canvass Repair Platoon."

In the midst of war, the last thing that a Marine wants to deal with is a leaky tent, or a torn flak jacket. The mission of CSSG-3's Canvass Repair Platoon is the repair of

these, and many other types of equipment. They frequently repair items such as troop covers and doors for HMMWV's, gortex gear, and sleeping bags.

Although six weeks at the Fabric Repair Specialist school, Fort Lee Va., prepares a Marine for a variety of seamster repair work, the real training comes with experience.

"I try to teach new Marines to sew a straight line, but some of them can't for a long time," said SSgt. Austin Sampson, staff non-commissioned officer in charge, Canvass Repair Platoon, Maintenance Company, Combat Service Support Group-3, as his large fingers manipulated a piece of gear under a sewing machine. "A lot of people think this isn't a very manly job, let them try to pull one of those huge tents onto a sewing machine, fighting with it while they try to sew a straight line."

Although a majority of the platoon's work comes from the motor pool and supply units, other MCB Hawaii units can request repairs. The procedures for having a piece

of equipment repaired are simple. After giving the Canvass Repair Platoon a call, they will schedule a time to bring the equipment down, and fill out an equipment repair order.

"We want to control the flow of work, so that the repairs don't become backlogged," said Sampson. It generally takes three to five working days for the equipment to be repaired, unless it is a busy time of year for the fabric specialists.

"Before and after a unit goes to PTA [Pohakuloa Training Area] there is a heavy flow of work for us," explained Cpl. Michael Kremlacha, quality control non-commissioned officer, Canvass Repair Platoon.

The Canvass Repair Platoon won't be making a camouflaged house call to make repairs for units, but through the right channels, they will provide timely repairs of combat necessary equipment. The efforts of the fabric repair specialists further bolster the Marine Corps' ability to remain a self-sufficient and cost effective combat ready force for our country.



A stitch in time — Cpl. Michael Kremlacha, quality control non-commissioned officer, repairs fabric, which is a vital part of Marine field operations.

\$

CASH

\$

NOW

WE WILL CASH YOUR PERSONAL CHECK AND WILL NOT DEPOSIT IT TIL YOUR NEXT PAYDAY

Proof of Payroll Direct Deposit Required

3057 Koapaka
(Near Airport, first right off Lagoon Drive)

833-2529

Deploying?

We can help...

Post Office Services - **SAM RATES**

Packing - Get it there in one piece!

UPS & FED EX - Low rates to mainland!

Boxes • Tape • Bubble • Loose Fill

NOW AVAILABLE:

"100 WEIGHT SERVICE" Thru U.P.S.

LOW RATES for over 100 lbs. shipped to one address.

THE POSTAL CONNECTION of Kailua

Aikahi Park Shopping Center
25 Kaneohe Bay Drive • Kailua

254-5094

Mon-Fri: 8am-6pm
Sat: 8am-4pm

FAST EDDIE'S NIGHTCLUB

LIVE!

This Week...

Thursday, June 15th

"BEAT POETS"

Showtime: 10pm

\$1.00 DRINKS 8-10PM

ENTER TO WIN A TRIP FOR 2 TO YOUR CHOICE OF SEVERAL DESTINATIONS!

DRAWING: JUNE 29TH

DOOR PRIZES!

Friday, June 16th

"KA'AU CRATER BOYS"

\$5.00 Cover

Showtime: 10pm

Saturday, June 17th

FUN & GAMES WITH CASH & OTHER PRIZES!!

SIMON SAYS & COORS SOFT SPORT BOWLING

SIMON SAYS' FINALS - TRIP FOR 2 TO YOUR CHOICE OF SEVERAL DESTINATIONS!

DJ PARTY!

10 PM

21 Years & Older Only • Doors Open 8pm • Sports Bar Opens 6pm Daily

52 ONEAWA ST., KAILUA 261-8561

Hurry! These bargains won't last long.

Our Biggest Clearance Event of the Year

Save 40-80% off department store prices on thousands of bargains from the leading brand names. Here are some examples:

FOR EXAMPLE Compare At: ~~\$60~~

Marshalls Everyday Low Price: ~~\$200~~

Marshalls Clearance Price: ~~\$20~~

You save 67% off department store prices.

LADIES

Dresses

Clearance Price \$15-30

You'd Pay Elsewhere \$34-98

Knit Tops

Clearance Price \$5

You'd Pay Elsewhere \$12-22

Casual & Career Wovens

Clearance Price \$8

You'd Pay Elsewhere \$18-36

Pants, Shorts, Skirts & Rompers

Clearance Price \$10

You'd Pay Elsewhere \$24-44

Swimsuits

Reduced Price \$14

You'd Pay Elsewhere \$30-78

Casual Shoes & Sandals

Clearance Price \$7-20

You'd Pay Elsewhere \$22-50

Spring Handbags

Clearance Price \$6-59

You'd Pay Elsewhere \$19-189

MEN

Designer Collections

Clearance Price \$15-25

You'd Pay Elsewhere \$42-68

Activewear

Clearance Price \$5-15

You'd Pay Elsewhere \$15-60

Knits

Clearance Price \$6-15

You'd Pay Elsewhere \$18-55

Shorts

Reduced Price \$9

You'd Pay Elsewhere \$20-30

KIDS

Infant Coveralls

Clearance Price \$6-8

You'd Pay Elsewhere \$14-24

Infant Dresses

Clearance Price \$8

You'd Pay Elsewhere \$20-24

Infant & Toddler Sportswear

Clearance Price \$6-8

You'd Pay Elsewhere \$14-24

Girls 2-6x Swimwear

Clearance Price \$6

You'd Pay Elsewhere \$16-18

Girls 4-14 Knit Tops & Shorts

Clearance Price \$5-6

You'd Pay Elsewhere \$15-17

Girls 4-14 Playwear

Clearance Price \$5-6

You'd Pay Elsewhere \$16-18

Girls 7-14 Dresses

Clearance Price \$15

You'd Pay Elsewhere \$32-38

Boys 4-20 Summer Activewear

Clearance Price \$6

You'd Pay Elsewhere \$14

Boys 4-20 Knit Tops & Shorts

Clearance Price \$8

You'd Pay Elsewhere \$16-24

HOME

Picnic Baskets

Clearance Price \$15

You'd Pay Elsewhere \$30-50

Flags

Clearance Price \$7

You'd Pay Elsewhere \$25

Picture Frames

Clearance Price \$5

You'd Pay Elsewhere \$16-22

Glass Storage Bottles

Clearance Price \$2

You'd Pay Elsewhere \$8-14

Framed Artwork

Clearance Price \$6-35

You'd Pay Elsewhere \$18-80

Garden Accessories

Clearance Price \$3-8

You'd Pay Elsewhere \$8-20

Comforter Sets

Clearance Price \$35-50

You'd Pay Elsewhere \$70-175

Marshall's

Get in On it.

PEARL CITY

Pearl Highlands Center
above Sam's Club
456-1005

HAWAII KAI

Hawaii Kai Towne Center
between Costco and City Mall
395-8077

STORE HOURS:

Mon-Sat 10:00am-9:00pm

Sun 10:00am-6:00pm

PEARL CITY

Map showing location at Pearl Highlands Center

HAWAII KAI

Map showing location at Hawaii Kai Towne Center

MERCHANDISE WILL VARY BY STORE • OVER 480 STORES NATIONWIDE • ©1995 MARSHALL'S

Hawaii LIFESTYLE

Hawaii Marine Section B

Covering Sports, Leisure and Family Events

June 15, 1995

Ballroom dancing?



From the Cheap Seats

John Magnus
Outdoor Recreation Supervisor

Rafer Johnson, Jesse Owens, Wilma Rudolph, Mark Spitz, Arthur Murray. All of those names probably ring a bell with you all as U.S. Olympic heroes. Whoa, Whoa, Whoa. Arthur Murray? What's that all about? Well, as some of you may already know, ballroom dancing is going to be a demonstration sport at the 1996 Olympics in Atlanta. No, you didn't misunderstand this, ballroom dancing is going to be in the Olympics.

Where do I begin? This is simply hysterical. I've tried to justify this decision over and over in my head, but I just don't get it. Ballroom dancing? Ballroom dancing? Ballroom dancing?! Who the.....? What the.....? How the.....? I'm flabbergasted. This is about as brilliant of a decision as any human being beyond the age of 10 minutes old can make. And if a nine minute old made the decision, at least you could shrug it off because hey, the kid's young, what do they know about sports and the Olympics anyway.

Back in ancient Greece when the Olympics were first started, I'm sure this wasn't what they had in mind. The concept was to find the strongest, the most courageous, and most disciplined person on earth. Tests of strength and endurance were the rule. Running, jumping, fighting and all that kind of stuff were, and still are, the basis for the Olympics.

Let's say that 40 years from now I'm watching the Olympics with my grandkids and the ballroom dancing comes on and they ask me about who the great ballroom dancers were when I was their age. What do I tell them? Do I make up names of ballroom dancing Olympians? Or do I tell them the truth? Do I tell them that when I was a kid we didn't have ballroom dancing because ballroom dancing was for wimps? Do I tell them that any guy who was a ballroom dancer was usually the guy getting the stuffing kicked out of him in the gym locker room? Do I tell them that in my day a real Olympian was someone like Jackie Joyner-Kersey, or Matt Biondi, not someone who skipped across a hardwood floor in a tuxedo spinning his female partner around?

As you can tell, I don't think that ballroom dancing is a sport. I'm not going to go through any long explanation, I just, plain and simple, don't think it's a sport. A friend asked me to explain the difference between ballroom dancing and pairs figure skating. Well, one is performed on wood, and the other on ice. Duh! And neither belong in the Olympics!

Man, what a joke! Ballroom dancing? Imagine what all those other athletes must feel like. Consistently weight training and dieting. Using technology to get the cutting edge equipment, eat the right foods, and develop hard core training regimens.

What do these ballroomers do? Spin each other around and slide across the hardwood. Big deal, throw some sawdust down and they can spin themselves for days at a time. Heck maybe they'll spin so much that they'll drill a hole in the ground and spin oil.

I guess I just feel that a leisure time activity like ballroom dancing will detract from the importance of the Olympics and the feats that are accomplished by Olympians. If these types of activities continue to be put into the Olympics, the other events will seem less important. Maybe I haven't given any concrete reasons why ballroom dancing should not be in the Olympics, but for some strange reason I think many of you get my point anyway.

Dive into Waimea Falls Park

Sgt. William Ray
Staff writer

For outdoor enthusiasts Hawaii offers virtually unlimited opportunities for surfing, body boarding, sailing, diving and hiking. For those who lack an adventurous streak, Hawaii is also a mecca of places to dine, dance, tour and shop.

However, many people may wonder where to find a way to experience a slower more natural Hawaii.

On the northern shore of Oahu, lies a lush tropical valley called Waimea. In this 1800-acre park there are 36 different gardens featuring more than 6000 species of rare and beautiful plant life.

Waimea Falls Park features a variety of attractions that can be experienced both day and night.

In the day, visitors might want to explore a Kauhale kahiko (ancient Hawaiian living site) where it's possible to interact with native Hawaiians as they recreate the daily activities that took place in the valley during the early 1700s.

Next, the Waimea Valley Dancers will teach and perform hula dancing as well as include spectators in some ancient Hawaiian games. Another featured attraction is the acrobatic diving which is performed by professional divers at the park's 45-foot waterfall.

This garden can be experienced by walking or riding on one of the tram cars that systematically run through the park.

For the more adventurous, there are some newer attractions at the park. Guests can explore never before seen

areas of Waimea Valley on a ten-mile, all-terrain vehicle ride or on the ATV mini-challenge which includes a downhill obstacle course. There are also downhill mountain bike tours through the northern valley and kayak rides along Waimea River.

Waimea Falls Park offers the Proud Peacock restaurant for dining in addition to several snack bars located throughout the park.

Along with the Makahiki Festival, a two-day cultural celebration in October every year, Waimea Falls Park offers several beautiful locations for weddings and receptions. They also provide wedding coordinators who will help with all the planning.

The newest attraction to the park is titled Waimea Valley by Night. This attraction allows guests to travel back in time by experiencing the life of a young Hawaiian woman around the turn of the century, as told by Auntie Kanani Awai a Kupuna, a storyteller and artisan who works at Waimea Falls Park. During the 90-minute tour through the park, listeners will see various scenes from the young woman's life acted out in a very real setting of ancient Hawaiian lifestyle.

Waimea Valley by Night is offered only on Friday, Saturday, and Sunday evenings. There is an evening package that includes dinner and the show, or a package that only includes the show.

Waimea Falls Park offers special military prices for all tours, activities and admissions. For rates and pricing information, contact the entertainment hotline at ITT at 254-3304.



Touring on an ATV — Traversing through the beautiful park is one of the highlights of a visit to the Falls. Contact ITT for more information at 254-3304.



Awesome — Spectacular night dives are just one of the many shows and forms of entertainment available to visitors at Waimea Falls Park.



Proud as a peacock — Beautiful animals and birds inhabit the park area which is a real setting for the ancient Hawaiian lifestyle.

Visiting USS Bowfin museum is exploring more than 50 years of submarine history

Sgt. Jesse Faleris
Staff writer

The darkness weighs heavily upon your eyes, straining to focus on their surroundings. The engines stopped and voices muted by a command, your ears ring in silence. All that exists are the blips of sonar; a Japanese battleship searching for its submerged enemy. The captain, peering through his periscope, patiently waits for the ship to cross his torpedo trajectory. Fire!!! The first of a barrage of torpedos is released, steaming toward the battleship's certain destruction. The craft would soon join 43 of its comrades at the bottom of the ocean during WWII, sent to their demise by an American submarine commissioned as the USS Bowfin and nicknamed the "Pearl Harbor Avenger".

An educational and entertaining afternoon can be experienced at the USS Bowfin Submarine Museum & Park. From Japanese one-man Kamikazi submarines and hydrogen peroxide driven torpedos to The USS Bowfin itself, the park is alive with pieces from history. Visitors can

climb aboard anti-aircraft guns, peek through periscopes that look upon Pearl Harbor, or walk through the hulls of the USS Bowfin. A moment of silence can be recognized as you gaze upon the Waterfront Memorial; a collection of monuments commemorating the 52 American submarines and more than 3,500 submariners that were lost in World War II.

A walk through the museum unfolds the pages of history to the curious patron. The fact that a submarine is a naval vessel capable of remaining submerged and traveling beneath the water is conveyed in a graphic and enjoyable manner. A person can obtain knowledge of the first attempt in 1776 or the first true submarines in France and the United States in the 19th century, to the USS Nautilus, the first nuclear-powered submarine, and much more.

The USS Bowfin Submarine Museum & Park is open daily from 8 a.m. to 5 p.m., with the last tour of the submarine starting at 4:30 p.m. The museum is located at 11 Arizona Memorial Drive in Honolulu, Hawaii 96818, and can be contacted at (808) 423-1341.



In the driver's seat — The USS Bowfin Museum allows visitors to view the history of submarines which are regarded as one of our nations vital security assets.

Team and individual standings for the CG's fitness series after eight events

Source: MWR Athletics

Team standings	1	2	3	4					Total
Headquarters Bn	20	18	18	16					72
3d Marines	12	20	20	20					72
CSSG-3	16	16	16	16					64
1st MAW/ASE	18	14	10	12					54
1st Radio Bn	14	8	12	18					52
MCAF	0	12	8	10					30
Camp Smith	0	0	14	0					14

Individual standings	1	2	3	4	5	6	7	8	Total
Men's 19 and under									
Jacob Green	0	18	14	16	0	0	0	0	48
J. Stahl	0	0	0	10	20	0	0	0	30
Sean Depaulo	0	0	12	18	0	0	0	0	30
Randolph Martinez	0	0	18	6	0	0	0	0	24
R. Smallze	0	0	0	4	18	0	0	0	22

Men's 20 to 29	1	2	3	4	5	6	7	8	Total
Rick Jones	0	0	20	18	18	16	20	0	92
Christopher Silva	0	20	14	0	6	8	0	0	66
Troy Arndt	0	0	16	8	14	14	0	0	52
Rich Doherty	0	0	0	20	20	0	0	0	40
Thomas Kay	0	10	10	0	0	0	0	16	36

Men's 30 to 39	1	2	3	4	5	6	7	8	Total
Wayne Prebor	0	14	10	10	14	16	16	0	80
Don White	20	0	6	16	8	0	0	0	50
Harvie Smith	0	18	18	14	0	0	0	0	50
John Moffett	18	8	14	2	0	0	0	0	42
F. Hoffman	0	0	0	18	0	0	0	20	38

Men's 40 & Over	1	2	3	4	5	6	7	8	Total
R.K. Flath	20	20	18	16	18	12	0	20	124
Kevin McGuiness	0	18	16	6	8	0	0	0	48
C. Cortez	0	0	20	18	4	0	0	0	42
Richard Vercauteren	0	14	10	4	2	0	0	0	36
Chris Pogdilao, George Wheeler, James Custatson, Joe Buranosky and Patrick Valent are tied for fifth place with 20 points									

Women's 19 & Under	1	2	3	4	5	6	7	8	Total
Angela Kandido	0	0	0	0	0	0	0	20	20
Lara Flath	0	20	0	0	0	0	0	0	20
Leonie Graddy	0	0	20	0	0	0	0	0	18
Jennifer Ober	0	0	0	0	0	0	0	18	18
Tara Hans	0	0	18	0	0	0	0	0	18

Women's 20 to 29	1	2	3	4	5	6	7	8	Total
Heather Connor	0	20	20	0	20	20	0	0	80
Joy Daniels-Digiovanni	0	18	14	0	18	14	0	0	64
Lisa Jones	0	0	8	0	0	16	20	0	44
Jill Daniels	0	0	0	20	16	0	0	0	36
Maureen Murphy	0	10	0	8	0	0	0	14	32

Women's 30 to 39	1	2	3	4	5	6	7	8	Total
Lillian Rodriguez	20	20	20	12	16	0	0	0	108
Regina Ober	0	0	12	0	8	0	0	20	40
Beth Blackburn	0	0	16	0	0	0	0	18	34
Lisa Howard	0	0	18	0	16	0	0	0	34
K. Chase	0	0	0	18	14	0	0	0	32
Natalie McPherson	0	8	2	16	6	0	0	0	32

Women's 40 & Over	1	2	3	4	5	6	7	8	Total
Marcia Kuehl	0	0	16	16	12	18	18	0	80
Mary Buranosky	0	0	20	0	16	0	20	0	56
Charlene Grant	0	0	0	18	18	0	0	0	36
Cheryl Loomis	0	0	0	20	14	0	0	0	34
Jenny Pankovich, Martha Uitto, RoseMarie Gooding, and Susie Braunthal are tied for fifth place with 20 points									

Tickets

The MWR Ticket Office offers tickets and information on how to get them at special military rates. The office also takes reservations for events and attractions around the island. Call the Entertainment Hotline at 254-3304 or stop by the Marine Corps Exchange for information and reservations. The office is located at building 1090 and is open Monday through Friday, 9 a.m. to 5 p.m., and Saturday, 9 a.m. to 2 p.m. effective June 15.

This week's offerings include:

Consolidated Theater— Movie tickets on sale for \$4.75.

Wallace Theaters— Movie tickets on sale for \$4.75.

Sea Life Park/Waimea Valley— Discounted tickets are on sale at ITT. Adult \$9, Junior (6-12 years) \$6.50, Child (4-5 years) \$3.25.

Aloha Diners Club— Enjoy Hawaiian hospitality and entertainment at restaurants and nightclubs at a big discount. The booklets are on sale for \$9.

Let's go to a Luau— Tickets are available through ITT for Hale Koa Hotel, Germaine's, Paradise Cove. Come in to ITT for more information and reservations.

Atlantis Submarine — A kama'aina special is being held through June 15. Buy one adult ticket and receive a free adult or child ticket. Ticket prices are \$50 for adults and \$29 for children. This special is only for kama'aina military, dependents and immediate family.

Charo — This legendary star will be performing at the Outrigger Reef Towers Hotel from now to July 1. Show times are Tuesday through Saturday at 7 p.m. Prices for the 7 p.m. cocktail show have been reduced to \$19.50. The buffet dinner is \$39.50.

Honolulu Comedy Club — The wackiest comedy club in town has extended their military special through the month of June. All shows are \$9.

George Wallace — The Honolulu Comedy Club will be hosting George Wallace June 30 to July 3. General admission is \$21.75 and gold circle admission is \$26.75. Come in early for the best selection and before all the seats are sold out.

Windjammer Cruises — Captain's Deck Buffet Packages on sale now through June 30. The cost is \$30 for adults and \$16.50 for children.

Discovery Zone — ITT has discount tickets available now for \$7. The tickets are good until Dec. 31, 1995.

Coupons books — "Shop Kailua First" coupon books are on sale now for \$12. It contains \$500 worth of valuable coupons. Books are sold to support Kailua Fireworks.

Father's Day — Celebrate this day with Frank Delima and Glenn Medeiros. Cost is \$27 for adults and \$16.50 for children (5-12). The ticket includes all you can eat buffet bar featuring prime rib. A no-host bar featuring standard bar drinks and cocktails. Show time is 11:30 a.m. with seating at 10:30 a.m. The show will be performed at the Polynesian Palace on June 18.

Starlet dinner cruise — During the months of July, August and September the Starlet will be offering their sunset dinner cruise for \$29.

Star of Honolulu — During the months of July, August and September the Star of Honolulu will be offering special rates for their Oahu Coast and Pearl Harbor cruises. The price for an adult ticket includes one child free. Additional children are \$9. The cruise sails daily from 8:30 a.m. to 12 p.m.

Movies

All movies shown at the Base Theater, building 219, begin at 7:15 p.m., unless otherwise noted. Call 254-2113 for more information. Movies are subject to change due to circumstances beyond the theater's control. Children ages 9 and under (age 16 and under for "R" movies) must be accompanied throughout all movies by a guardian 18 years of age or older.

"A Goofy Movie" (Animated) G: 76 minutes, plays Friday at 7:15 p.m. and Sunday at 1 p.m. Disney's favorite cartoon klutz makes his feature debut as an accident-prone dad!

"Bad Boys" (Action/Comedy) R: 106 minutes, plays Saturday and Sunday. Starring Martin Lawrence and "Fresh Prince" Will Smith. A pair of cop buddies track down members of a major crime ring.

A Goofy MOVIE

BAD BOYS



ATTENTION ALL MILITARY DEPENDENTS!!!

FREE Cosmetic Tooth Whitening (Bleaching) For ALL New Patients!!! (A \$200.00 Value!)

- **FREE** Halimeter Breath Analysis.
- **FREE** Toothpaste, Toothbrush and Floss With Every 6-Month Checkup/Cleaning Appointment.
- **FREE** Convenient Parking.
- DDP/DELTA, Military Dental, HDS and HMSA Welcomed.

WE LOVE KIDS AND ADULT PATIENTS!!!

For Over 10 Years of Dedicated, Quality, Gentle, Dental Care ...

CALL US AT 597-1040

FRESH BREATH CENTER OF HONOLULU, 1040 South King, Suite 411.....597-1040



The car might cost too much. The insurance doesn't have to.

As a member of our armed forces, you understand the true meaning of **value**. That's why you'll appreciate car insurance from GEICO. We specialize in offering **lots of ways to save** on car insurance.

We offer **complete 24-hour service** and overseas coverage. Combined with low down payments, money-saving deductibles and easy payment plans, we've got the **policy to fit your budget**.

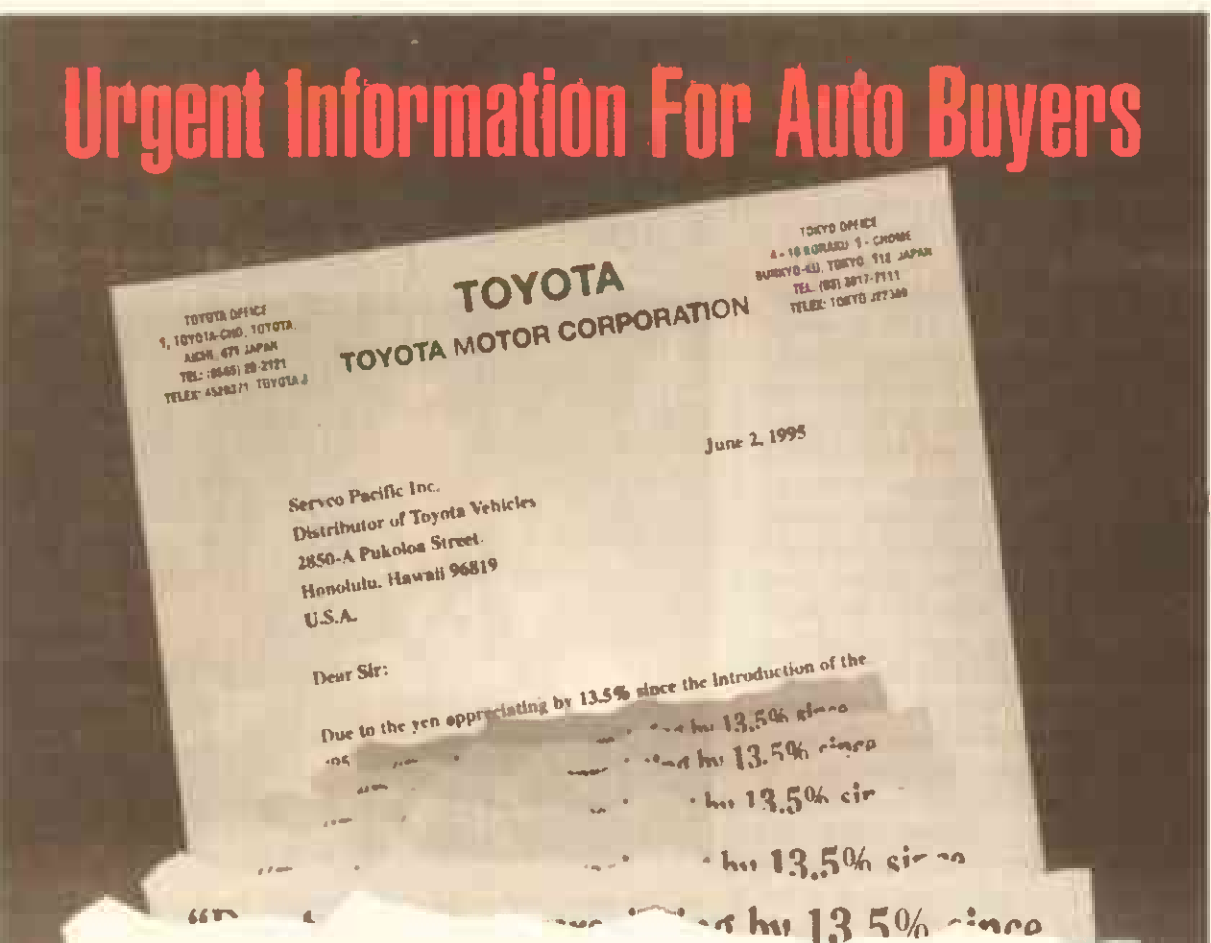
We also provide a variety of **military and federal discounts** that may be available in your state, and have **offices near most military bases**. Be sure to have your current policy handy, so we can tell you, in a matter of minutes, exactly how much you could save with GEICO. Call today for a **free rate quote** and discover why more than half a million active and retired military members and veterans have insured their cars with GEICO for nearly 60 years.

GEICO
The sensible alternative.

808-593-1010
1240 Ala Moana Blvd.
Honolulu
(Across from Ala Moana Beach Park)
Hours: M-F 7:30-4:30

Government Employees Insurance Co. • GEICO General Insurance Co. • GEICO Indemnity Co. • GEICO Casualty Co.
©1995 GEICO

Urgent Information For Auto Buyers



"Due to the yen appreciating by 13.5% since the introduction of the '95 Toyotas, an immediate price* increase is unavoidable."

Toyota-Hawaii has been informed by Toyota Motor Corporation that due to a 13.5% increase in the value of the Japanese yen since the launch of the '95 Toyotas, it is unavoidable that prices* be raised immediately.

Unlike Toyota dealers on the Mainland U.S.A., Toyota-Hawaii will honor current prices* to our dealers through July 1, 1995, by absorbing the factory increase.

Like you, we do not look forward to this price increase. However, we are committed in our efforts to providing the people of Hawaii with the highest quality product at the best possible price. We thank you for your understanding. If you have any questions or concerns, please call any one of your Toyota-Hawaii dealers.

* Manufacturer's Suggested Retail Prices

TOYOTA HAWAII

KAIMUKI TOYOTA
3282 Wai'aleae Ave., Kaimuki • 735-1737

MOTOR IMPORTS TOYOTA
650 Kapiolani Blvd., Honolulu • 591-2688

TOYOTA CITY
2850 A Pukoloa St., Mapunapuna • 837-0400

WAI'PAHU TOYOTA
94-757 Farrington Hwy., Wai'pahu • 677-3161

WINDWARD TOYOTA
45-655 Kam Hwy., Kaneohe • 233-2600

WAI'IAWA AUTO CENTER
141 S. Kam Hwy., Wai'iawa • 622-5544 / 622-4195

KAUAI TOYOTA
4337 Rice St., Lihue • 245-6978

BIG ISLAND TOYOTA
811 Kano'elehewa Ave., Hilo • 935-2920

MAUI TOYOTA
320 Hana Hwy., Kahului • 877-2781

Family Service Center

Relocation Assistance offers many different programs to help families during transition

Brian Goodson
Relocation Assistance Program manager

The Family Service Center's (FSC) Relocation Assistance Program (RAP) can assist all Marines who are in the process of relocating themselves and/or their family members. Whether you are transferring to a new duty station or have recently arrived from another, the RAP can help. We have several specialized services that one can take advantage of.

SITES (Standard Information Topic Exchange Service) provides comprehensive relocation information on over 330 DoD military installations worldwide. The information in SITES is updated every 90 days so one never receives outdated information. So whether your next duty station is at Camp Pendleton or MARFOREUR in Stuttgart, Germany we have got a SITES printout for you.

To supplement SITES we also have on file at the FSC, "Welcome Aboard Packages" from other DoD installations worldwide. These packages are available to checkout for 7 days. However, if one would like a package to be sent to them covering the next installation, they can request one from the gaining command's FSC. It can be sent to either the servicemember's home or work address.

To request a sponsor, Marines should first fill out a Sponsorship Request Form which is enclosure (1) of

MCO 1320.11D and send it to the gaining command's G-1/S-1. We can also assist in requesting a sponsor for a servicemember and his family. This is accomplished by coordinating a request for a sponsor with the gaining command's FSC.

Base Lending Locker Has Moved! The Base Lending Locker has recently moved from Building 460 to Building 216, Room 45. Hours of operation are from 9 a.m. to 2 p.m., Monday thru Friday. The Lending Locker is designed to help if you are newly arrived and are awaiting delivery of your household goods. It also assists those who are leaving and have shipped their household goods but are still waiting to vacate housing. We can provide basic household items such as loaner kitchen packs with pots, pans, and dishes for four, appliance packs, linens, car seats, irons and ironing boards. These items are issued on a first come-first served basis and are available for a 30-day lending period.

To educate all service members regarding their PCS move, the Relocation Assistance Program has a PCS Move Workshop which is designed to give in one 3-hour class all the information you may need to properly plan your PCS move. Several base offices will conduct the brief which includes Housing, TLA, Disbursing, and the Transportation Management Office. Many Marines will see these offices individually after

they have received their orders without considering how they want to execute their move. Transferring PCS from Hawaii gives a Marine and his family options they don't have when transferring from a CONUS based command. It really helps to attend the class, receive information regarding your PCS options and entitlements, and then develop a plan on your own.

For new joins, we have the New Arrivals Orientation held on the first Tuesday of every month. In this half-day orientation we will brief all base programs and services. It will give all new arrivals complete information about the base. Spouses are always welcome.

To supplement the New Arrivals Orientation the monthly Base and Island Tour will give those who sign up a day's excursion around the island of Oahu. All those personnel and family members who have recently arrived should consider going on this tour. It helps orient one to what the island can offer regarding recreation and cultural activities. Conducted by experienced volunteers, one can come away from the Base and Island Tour with a better understanding and appreciation of the island.

To summarize, the Relocation Assistance Program can help those who are leaving and arriving with information and services designed to ease the stress of relocating from one duty station to another. For further information or to register for a class or tour call 257-3135.

Religion

MCB Hawaii Kaneohe Bay Chapel

Catholic Weekday Mass	11:45 a.m. (Monday-Friday)
Saturday Mass	6:00 p.m.
Sunday Mass	7:30 a.m.
Sunday Mass	9:30 a.m.
CCD Preschool	3:45-4:30 p.m. (Monday)
CCD Kindergarten	3:45-4:30 p.m. (Monday)
CCD Grades 1-12	6-7:15 p.m. (Mondays at Mokapu Elem.)
Protestant Lit. Communion	8:30 a.m. (Sunday)
Sunday School	9:30-10:30 a.m. (at Preschool Center)
Adult Bible Study	9:30-10:30 a.m. (Sunday)
Non-lit. Worship	11:00 a.m. (Sunday)
Kaleidoscope	1:30 p.m. (Wednesday)

(An after-school program for elementary age children)
Gospel of Holiness Fellowship at the Boondocker Theater
Sunday School 9:30 a.m.
Sunday Worship 11:30 a.m.
Bible Study 7:00 p.m. (Tuesday at the Base Chapel)
For more information about the MCB Hawaii Kaneohe Bay Base Chapel religious services, call 257-3552.

MCB Hawaii Camp H.M. Smith Chapel

Catholic Mass	6:30 a.m. daily and 8:00 a.m. (Sunday)
Prot. Sunday School	9:00 a.m.
Protestant Worship	10:00 a.m. (Sunday)

For more information about the MCB Hawaii Camp H.M. Smith Chapel religious services, call 477-5098.

Aloha Jewish Chapel at Naval Base Pearl Harbor

Shabbat Service 7:30 p.m. (Friday)
For more information about Jewish services, call 471-3971.

ADULT VIDEO SALE

4-Hr Video... 3 for \$45⁰⁰

2-Hr Video... 3 for \$40⁰⁰

Special Gay Video \$10⁰⁰ ea

Great Selection Of Adult Toys and Novelties

We also have video rentals

Rent 4 Get 2 FREE plus FREE X-tra Day Regular or Adult except new releases

FREE Membership with this ad.

Open 7 Days Noon - Midnight

ROCKET VIDEO

263-7770

167 HAMAKUA DRIVE, KAILUA

WANTED!

Part-Time Delivery Person For Beauty Supply. Must Be Available Thursday, 8am-6pm. Call 236-4805

PETER K. BUDNIKAS, D.M.D.

"Dr. Bud"

Practicing Family Dentistry

New Patients Always Welcome
Military Families • Local Residents

Pali Palms Plaza • 970 N. Kalaniana'oli Hwy., Ste. C-309, Kailua
Office Hours 254-5503
By Appointment

CAMP SMITH KMCBH

Term 4 - 95
7/10/95 - 9/18/95

REGISTRATION IS NOW OPEN

For New and Returning Students Interested in the Associate, Bachelor, and Master Degree Programs

FOR INFORMATION/COUNSELING CONTACT

CAMP SMITH
Steve Kinder M-F 0730-1530 487-1182

KANEOHE MCBH
Dayle McGaha M-F 0830-1630 254-2687/254-4133

My Furry Friends

Dog & Cat Grooming

Styling, Dipping, Warm Oil Conditioning

Your Pet Will PAWS-itively Love You For It!

263-4891

167 Hamakua Drive, Kailua (near Midas)

Love The Outdoors?

Then come to Hawaii Outdoor World! Tents, Camping Gear, Climbing Equipment & More!

Rock Climbing Gym Now Under Construction!

Gloria
"World Speed Climbing Champion"
845-2100
NEW LOCATION
214 Sand Island Access Rd. (Near Kilgo's)

Hawaii's Largest Selection. We Refuse To Be Undersold!

Protect the Aina

AIRFARE SALE

CALL NOW 839-0039

Los Angeles/ San Francisco \$330⁰⁰ \$220⁰⁰ OW

Seattle \$340⁰⁰ \$230⁰⁰ O/W \$362⁰⁰ \$244⁰⁰ T/T

MidWest \$336⁰⁰ O/W \$582⁰⁰ T/T

Mid East \$342⁰⁰ O/W \$598⁰⁰ T/T

East \$354⁰⁰ O/W \$612⁰⁰ T/T

Island Coupons
Mahalo-Call For Best Price! Now Serving Kapahulu!
\$36 Aloha \$39 Hawaiian
Cash & Carry. Restrictions

Low season fares plus tax. Subject to availability and changes.

ROYAL ADVENTURE TRAVEL

3229 Koapaka St., Hon., HI 96819
(Behind Plaza Hotel Off Nimitz)
OFFICE HOURS: Monday thru Friday 9 a.m. to 3:30 p.m.
Call Gerry or Ted
PHONE: 839-0039 FAX: 833-9942

WORLD CHAMPIONSHIP WRESTLING PRESENTS

THE GREAT AMERICAN BASH

SUNDAY, JUNE 18

12:30PM Countdown
1PM LIVE • 4PM REPEAT

\$24.95 includes live and repeat.

only on Pay-Per-View

BACK BY POPULAR DEMAND!

TO ORDER CALL OCEANIC CABLE AT 625-8123. CODE 95.

Channel 45

THE CLASSIFIED INDEX

Telephone Service
235-5881

Mon.-Fri. 8 a.m.-5 p.m.

Counter Service
45-525 Luluku

Kaneohe

Mon.-Fri. 8 a.m.-5 p.m.

Deadlines:

Line Ads due by 12 Noon - Tuesday

Class Display Ads due by 4:00 p.m. Friday

CANCELLATIONS & CORRECTIONS due by 12 Noon - Mon.

Important Information

Please check your ad on the first day and bring any error to the attention of Classified immediately. RFD Publications assumes responsibility for errors in copy for the first insertion only, and any adjustments or credit will not exceed the value of the ad. The publisher assumes no further liability and the advertiser expressly waives any and all claims of consequential damages due to errors. RFD Publications cannot assume responsibility for the claims or performance of advertisers.

TRAFFIC CONTROL DEVICES

Traffic Schedule No. 95-4

IN ACCORDANCE WITH THE PROVISIONS OF ORDINANCE NO. 91-87 AMENDING ARTICLE III, THE DEPARTMENT OF TRANSPORTATION SERVICES, CITY AND COUNTY OF HONOLULU HEREBY ESTABLISHES TRAFFIC SCHEDULE NO. 95-4 TO AMEND SCHEDULE XX OF SECTION 15-13.10 (a) (7) ESTABLISHING TOW ZONES - 24 HOURS; SCHEDULE XXI OF SECTION 15-13.10 (a) (8) ESTABLISHING TOW ZONES - SPECIFIED TIMES; SCHEDULE XXIII OF SECTION 15-14.5 (b) ESTABLISHING PROHIBITED LOADING/UNLOADING; SCHEDULE XXIV OF SECTION 15-15.1 (d) ESTABLISHING CURB LOADING ZONES.

Section 1. Chapter 15 (1990 Traffic Code), City and County of Honolulu, is hereby further amended in the following particulars:

- a. By amending Schedule XX of Sec. 15-13.10 (a) (7) establishing tow zones - 24 hours by adding thereto the following items:
- "North King St., mauka side, distance 45' Koko Head direction from the Koko Head curb prolongation of River St."
 - "North King St., mauka side, distance 40' Koko Head direction from the Koko Head curb prolongation of Kekaulike St."
 - "North King St., mauka side, distance 75' Ewa direction from the Ewa curb prolongation of Kekaulike St."
 - "North King St., mauka side, distance 75' Ewa direction from the Ewa curb prolongation of Maunaloa St."

- b. By amending Schedule XXI of Sec. 15-13.10 (a) (8) establishing tow zones - specified times in the following particulars:

1. By adding thereto the following items:
- "North King St., mauka side, distance 217' Koko Head direction from a point 40' Koko Head of the Koko Head curb prolongation of Kekaulike St., 6:30 to 8:30 a.m. and 3:30 to 5:30 p.m., Monday to Friday, 4:00 to 6:00 a.m., Saturday except Sundays and State holidays."
 - "North King St., mauka side, distance 156' Koko head direction from a point 40' Koko Head of the Koko Head curb prolongation of Kekaulike St., 6:30 to 8:30 a.m. and 3:30 to 5:30 p.m., Monday to Friday except Saturday, Sunday and State holidays."

2. By amending item relating to North King St., mauka side, between River St. and Bethel St., 6:30 a.m. to 5:30 p.m., Monday to Friday except State holidays, to read:

"North King St., mauka side, between Maunaloa St. and Bethel St., 8:30 a.m. to 5:30 p.m., Monday to Friday except State holidays"

- c. By amending Schedule XXIII of Sec. 15-14.5 (b) establishing prohibited loading/unloading for the purpose of street sweeping between the hours of 8:00 p.m. to 10:00 p.m. on specified days, except State holidays in the following particulars:

1. By adding thereto the following items:

"Alakea St., Ewa side, for its entire length on Monday, Wednesday and Friday."

"Alakea St., Koko Head side, for its entire length on Sunday, Tuesday and Thursday."

"Bishop St., Ewa side, for its entire length on Monday, Wednesday and Friday."

"Bishop St., Koko Head side, for its entire length on Sunday, Tuesday and Thursday."

"North King St., both sides, between the junction of N. Beretania/N. King Sts. and River St. from Sunday through Friday."

"North King St., mauka side, between River St. and Nuuanu Ave. on Monday, Wednesday and Friday."

"North King St., makai side, between River St. and Nuuanu Ave. on Sunday, Tuesday and Thursday."

"Nuuanu Ave., Ewa side, between Vineyard Blvd. and S. Nimitz Hwy. on Monday, Wednesday and Friday."

"Nuuanu Ave., Koko Head side, between Vineyard Blvd. and S. Nimitz Hwy. on Sunday, Tuesday and Thursday."

"Pali Hwy., Ewa side, between Vineyard Blvd. and S. Beretania St. on Monday, Wednesday and Friday."

"Pali Hwy., Koko Head side, between Vineyard Blvd. and S. Beretania St. on Sunday, Tuesday and Thursday."

"Paohi St., mauka side, for its entire length on Monday, Wednesday and Friday."

"Paohi St., makai side, for its entire length on Sunday, Tuesday and Thursday."

"Queen Emma St., Ewa side, between Vineyard Blvd. and S. Beretania St. on Monday, Wednesday and Friday."

"Queen Emma St., Koko Head side, between Vineyard Blvd. and S. Beretania St. on Sunday, Tuesday and Thursday."

"Richards St., Ewa side, for its entire length on Monday, Wednesday and Friday."

"Richards St., Koko Head side, for its entire length on Sunday, Tuesday and Thursday."

"South King St., mauka side, between Nuuanu Ave. and Richards St. on Monday, Wednesday and Friday."

"South King St., makai side, between Nuuanu Ave. and Richards St. on Sunday, Tuesday and Thursday."

2. By deleting therefrom the following items:

"Alakea St., both sides, for its entire length from Sunday through Friday."

"Bishop St., both sides, for its entire length from Sunday through Friday."

"North King St., both sides, between the junction of N. Beretania/N. King Sts. and Nuuanu Ave. from Sunday through Friday."

"Nuuanu Ave., Ewa side, between Vineyard Blvd. and Marin St. on Monday, Wednesday and Friday."

"Nuuanu Ave., Koko Head side, between Vineyard Blvd. and Marin St. on Sunday, Tuesday and Thursday."

"Nuuanu Ave., both sides, between Marin St. and S. Nimitz Hwy. from Sunday through Friday."

"Pali Hwy., both sides, between Vineyard Blvd. and S. Beretania St. from Sunday through Friday."

"Paohi St., both sides, for its entire length from Sunday through Friday."

"Queen Emma St., both sides, between Vineyard Blvd. and S. Beretania St. from Sunday through Friday."

"Richards St., both sides, for its entire length from Sunday through Friday."

"South King St., both sides, between Nuuanu Ave. and Richards St. from Sunday through Friday."

- d. By amending Schedule XXIV of Sec. 15-15.1 (d) establishing curb loading zones by adding thereto subsection (b) freight loading zones the following items:

"North King St., mauka side, distance 217' Koko Head direction from a point 45' Koko Head of the Koko Head curb prolongation of River St., 8:30 a.m. to 3:30 p.m., Monday to Friday except Saturday, Sunday and holidays."

"North King St., mauka side, distance 156' Koko Head direction from a point 40' Koko Head of the Koko Head curb prolongation of Kekaulike St., 8:30 a.m. to 3:30 p.m., Monday to Friday except Saturday, Sunday and holidays."

Section 2. This Schedule is hereby attached to and made a part of Article VI hereof and shall take effect on the 10th working day after its publication.

CHARLES O. SWANSON, Director
Department of Transportation Services
City and County of Honolulu

Dated: June 9, 1995

Copies of the Schedule are on file in the City Clerk's Office for use and examination by the public.

(Sun Press, 6/15/95)

BAD CREDIT NO CREDIT BANKRUPTCY DIVORCE DRIVE HOME TODAY!

GET THE CAR YOU WANT AND
THE CREDIT YOU DESERVE!



CALL NOW!
Jim. Atherton 671-5115



INTERISLAND VACATION FOR TWO!

JUST BRING IN THIS COUPON AND RECEIVE A
VACATION FOR TWO WHEN YOU FINANCE
YOUR NEW OR LATE MODEL VEHICLE WITH US!

OFFER NOT SUBJECT TO PRIOR SALES. INTERISLAND VACATION IS A LIMITED TIME
OFFER AND SUBJECT TO CANCELLATION WITHOUT NOTICE. VACATION OFFER DOES
NOT APPLY TO SALE VEHICLES AND MAY NOT BE USED IN CONJUNCTION WITH ANY
OTHER REBATE, SALE, OR PRICE REDUCTION.

94-223 FARRINGTON HWY, WAIPAHU, HI 96797

Classifieds

Sun Press	MidWeek	COMBO
1 wk. \$2.90 per line	1 wk. \$5.13 per line	1 wk. \$6.39 per line
2-4 wks. \$2.79 per line	2-4 wks. \$4.77 per line	2-4 wks. \$6.08 per line
5-8 wks. \$2.65 per line	5-8 wks. \$4.52 per line	5-8 wks. \$5.95 per line
9 wks. + \$2.52 per line	9 wks. + \$4.30 per line	9 wks. + \$5.47 per line

ASK ABOUT OUR 3-WEEKS-FOR-2 COMBO SPECIAL
Commercial advertising, rentals, employment, business sales or services
are NOT eligible for the 3-WEEKS-FOR-2 SPECIAL

Name: _____
Address: _____
Home Ph: _____ Bus. Ph: _____
Exp: _____
Q VISA Q MasterCard No. _____

Allow for each letter, punctuation or space. Please do not abbreviate.
Please run this ad in your next issue of Sun Press Newspapers and/or MidWeek Magazine.

MINIMUM 3 LINES PER AD

FIRST LINE	2	3	4	5	6	7	Classification #	TOTAL COST

MidWeek 45-525 Luluku Rd. 235-5881
Sun Press Kaneohe, HI 96744

1 Legal Notices

0 Free Bees

4 Health & Fitness

10 Cemetery Plots

ETC., ETC., ETC.

15 Announcements

93 Vacation Rentals

114 Real Estate

115 Real Estate

NO MONEY DOWN

RELOCATING TO

GET MORE MILEAGE

FOR YOUR DOLLAR

IN THE CLASSIFIEDS

IF all those odds & ends

are driving you crazy,

sell 'em for extra cash

through the Classifieds.

Call today and place

your ad. Buyers and

sellers agree the

Classifieds are a bargain.

235-5881.

LENOX RESOURCES, INC. RECYCLE FOR CASH!

ALUMINUM
CANS - 43¢ • Shapes, siding - 30¢-40¢/lb.

COPPER
Wire, tubing, sheet - 85¢-80¢/lb.

BRASS
Plumbing, tubing, solids - 30¢-40¢/lb.

BREAKAGE
TVs, microwaves, stereo, computer equip. - 1¢-2¢/lb.

81-445 Komoeha St., Kapolei

Campbell Industrial Park 682-5539

MON. 7 to 4:30

THRU

FRI.

7 to 4:30

Lenox Resources

Recycling Center

Recycling Center

Recycling Center

Recycling Center

Recycling Center

Recycling Center

Recycling Center

Recycling Center

Recycling Center

Recycling Center

Recycling Center

Recycling Center

Recycling Center

Recycling Center

Recycling Center

Recycling Center

Recycling Center

Recycling Center

Recycling Center

Recycling Center

Recycling Center

Recycling Center

Recycling Center

Recycling Center

Recycling Center

Recycling Center

Recycling Center

Recycling Center

Recycling Center

Recycling Center

Recycling Center

Recycling Center

Recycling Center

Recycling Center

Recycling Center

Recycling Center

Recycling Center

Recycling Center

Recycling Center

Recycling Center

Recycling Center

Recycling Center

Recycling Center

Recycling Center

Recycling Center

Recycling Center

Recycling Center

Recycling Center

Recycling Center

Recycling Center

Recycling Center

Recycling Center

Recycling Center

Recycling Center

Recycling Center

Recycling Center

Recycling Center

Recycling Center

Recycling Center

Recycling Center

Recycling Center

Recycling Center

Recycling Center

Recycling Center

Recycling Center

Recycling Center

Recycling Center

Recycling Center

Recycling Center

Recycling Center

Recycling Center

Recycling Center

Recycling Center

Recycling Center

CLASSIFIED

HEADING	CLASS	Domestic	Mopeds & Scooters
Announcements	15	Job Wanted	171
Antiques-Art	130	Domestic	Moving & Storage
Apts. Furnished	73	Job Wanted	123
Apts. Party	74	Employment	144
Furnished	74	Opportunities	Personals
Apts. Unfurnished	75	Free Sec	Pets-Everything
Auto	175	Garage/Land	Photography
Announcements	175	Sale-Moving	Pickups, Trucks
Auto Leasing	172	Health & Fitness	Property
Automobiles	176	Heavy Machinery	Management
For Sale	176	Help Wanted	Real Estate
Auto Service/Parts	156	Male/Female	Announcements
Aldos Wanted	131	Home Appliances	Real Estate Loans
Aviation	3	Home Furnishings	Real Estate for Trade
Bicycle Sales &	131	Houses Furnished	Real Estate Wanted
Service	131	Housesitting	Rentals to Share
Boats, Supplies &	146	Houses Unfurnished	Restaurants, Bars
Service	146	Income Property	Rooms for Rent
Business	50	Houses	Schools & Instruction
Prof. Services/	37	Part. Furnished	Short Term Rentals
Cleaning	37	Income Tax	Sporting Goods
Card of Thanks	8	Jewelry & Clothing	Stereo, Video &
Cemetery Plots	10	Jobs Wanted	Television
Condos	86	Legal Notices	Stores & Offices
Townhouses Furn.	86	Livestock & Horses	for Rent
Condos/Townhouses	109	Lost & Found	Swaps & Exchanges
Part. Furn.	85	Office Equipment	Travel
Condos/Townhouses	87	Miscellaneous	Vacation Rentals
Unfurnished	87	Wanted	Vans, Campers
Computers	132	Investment	Jeeps, 4WD
		Opportunities	Water Sports
		Motorcycles	Equipment
			*COD

INDEX

Apartment Are
Disappearing Everywhere
MIDWEEK/SUN PRESS 235-5881

HOME & APARTMENT GUIDE

<p>73 Apts. Furnished</p> <p>KAILUA Cool, pvt. 1/1, avail. now, prkg., tennis, \$875 incl. utils. 262-4469.</p> <p>KAILUA On laka, deluxe, 1 bdrm. studio \$740/mo. 262-5181.</p> <p>KAILUA new studio, lake view, private, large deck, cable, \$750. 281-4902.</p> <p>LANIKAI pvt. 1 bdrm. cotage, great ocean view! \$1250/mo. incl. utils., W/D, 263-3793.</p>	<p>74 Apts. Party Furnished</p> <p>KANEKOE Val Hala Apt. Special, 1 bdrm. \$875 mo. First 3 mos. elec. paid by landlord. 247-0500, M-F, 8-4.</p> <p>NANAKULI - KANEKOE Nice 2/1, 2 prkg. Avail. now. \$650. 262-0530.</p> <p>WAILUA 2 bdrm. dplx. w/ yd. \$875 water incl. 455-2381 or 537-1170.</p>	<p>82 Houses Unfurnished</p> <p>SUNSET BEACH 2/1, nr. new, garage, oceanside, \$1200. 838-7870.</p>	<p>8</p>
--	---	--	-----------------

ANN PEARL

**INTERMEDIATE-CARE FACILITY
EMPLOYMENT OPPORTUNITIES
EXCELLENT STARTING BENEFITS**

ANN PEARL is a family owned and operated Intermediate-Care Facility committed to providing quality health-care services to the people of the Windward side since 1950.

**RN & LPN ON CALL
CNA NURSE'S ASSISTANT**

- No Long-Term Care Experience Needed
- New Graduates Welcome

BENEFITS

- Medical Plan including Dental, Drug & Vision
- Excellent Starting Pay
- Flexible Schedules
- Full- & Part-Time Positions
- Employer Paid Pension Plans
- Regular Wage Increases
- Paid In-service Training
- FREE CPR Training & Certification
- Supportive Administration
- Participative Management
- FREE PARKING
- NO TRAFFIC HASSLES
- Paid Vacation & Sick Leave

45-181 Waikalua Road Kaneohe, Hawaii 96744

247-8558

Castle Medical Center

SHARE In Castle Medical Center's mission to provide high-quality health care with a Spiritual concern.

SOCIAL WORKER

Part-time position in Home Care. Master's degree in Social Work. Must have knowledge of community services for client referrals & valid Hawaii's driver's license. One year experience in a health care setting preferred.

RESIDENTIAL COUNSELOR - BOBBY BENSON CENTER

Per diem positions for adolescent residential facility. Various shifts. Must have one year experience in a drug/alcohol treatment program and working with adolescents.

HUMAN RESOURCES - (APPLY IN PERSON)

Monday, Wednesday & Thursday only 9 am-12pm • 640 Ulukouhi Street • Kailua, Hawaii 96734-4498
For more information, call our Jobline at 263-5151
An Equal Opportunity Employer

GOOD PEOPLE with BAD CREDIT

WE CAN FINANCE YOU!

Even if you've had...Judgment • Repos
Charge-Offs • Slow Pay • Tax Liens
Bankruptcy • Foreclosures • Student
Loan Defaults or just plain Bad Luck.

**We can put you in a New or
Used Car, Truck or Van**

WE CAN HELP!

OVER \$10,000,000 TO LOAN!

Call David for details at

831-2735

Hurry before the money runs out!

JN AUTOMOTIVE GROUP

CALL

**YOUR TICKET
TO
JOBS
HOMES
EVERYTHING**

235-5881

JOIN THE TEAM

**Immediate Openings for
NEWSPAPER EMPLOYEES**

Progressive company offering excellent wages and benefits has the following positions open:

FULL-TIME POSITIONS

ACCOUNTANT

Immediate opening for experienced Accountant with PC spreadsheet, word processing and communication skills. Must be able to work under pressure and meet deadlines, some overtime required. Accounting experience with financial statement preparation experience required. Excellent company benefits.

PRESSROOM TRAINEE

Entry-level position in the printing trade for mechanically minded individual. Physical work in machinery environment producing MidWeek and Sun Press newspapers as well as commercial printing. Must be capable of heavy lifting and working 12-hour shifts. Full-time only. Starts at \$7.79/hr., up to \$10.06/hr. after one year. Apply in person — no phone calls.

PART-TIME POSITIONS

CIRCULATION REPRESENTATIVES

An energetic and cordial individual is needed to deliver Sun Press Newspapers to businesses each Thursday in the Kaneohe area. Work 4-5 hours per week and earn approximately \$45. Must have own vehicle. Gas allowance is also provided.

DISTRICT MANAGERS

Excellent part-time opportunity for sharp self-starters. Work from your home supervising young business people. Good salary, gas allowance, bonuses. Positions available in Kahaolu and Hawaii Kai.

For further information, contact Ginny

RFD PUBLICATIONS, INC.

45-525 Luluku Road, Kaneohe
Phone 235-5881 • Monday-Friday 8 a.m.-5 p.m.

MidWeek

Sun Press

50 Business Opportunities

WHOLESALE DIRECTORIES

Buy direct from wholesalers at lowest prices. Thousands of products. Free details, write & send SASE & phone #. 98-1268 Kaahumanu St. C-3, #351, Pearl City, HI 96782.

57 Employment Information

AIRLINES WILL TRAIN

\$9,000-\$18,000/yr. HIRING NOW. ALL POSITIONS. 1-800-508-5585, ext. A2505

EARN MONEY Reading books! \$30,000/yr. Income potential. Details: (1) 805-962-8000 ext. Y-4031.

HOME TYPISTS PC users needed. \$45,000 income potential. Call (1) 805-962-8000 ext. B-4031.

POSTAL JOBS \$18,392-\$67,125/yr. Now hiring. Call (1) 805-962-8000 ext. P-4031.

58 Schools & Instruction

BE A Hypnotherapist 2-Day Certificate Course Oahu, 6/24, 1-242-7094

CLASSICAL GUITAR LESSONS Frary Guitar, 944-8108.

IMPROVE YOUR MEMORY GUARANTEED SEMINAR! June 21, Wed., 6-9 pm 1131 Kapotani Blvd. Ste. 201

Remember names, facts, figures, cure absent-mindedness etc. \$29/person 988-8077

Audio tapes also available for \$29.50.

LESSONS 622-4810

Ukulele o' Wahiawa \$12.50 per 1/2 hr.

CLASSIFIEDS are money makers! Call today and place your ad where it'll get fast results. 235-5881.

58 Schools & Instruction

PIANO LESSONS

Exp. established teacher. Openings in Kaneohe. John Schouten, 247-6010

PIANO LESSONS

Kailua. Exp. teacher. All ages, all levels. 263-3323.

SEWING LESSONS Ages 10 thru 18. Kailua. Dian, 262-6387 or 262-4455.

SUPER learning, tutoring K-6. Academics, math & reading. Call 595-8440.

TRAVEL TRAINING

Airlines, Travel Agency Cruises, Tours

HOTELS, COMPUTER KOTTER TRAVEL INSTITUTE 262-7749

Kaneohe 233-1155 Licensed by DOE

TV & FILM ACTING

Be your best on camera. 949-7264.

60 Help Wanted Male/Female

"\$200 - \$2000 A WEEK"

Work at home! Part time. Call Mr. Lee, 949-5000.

"10 CHALLENGING PEOPLE NEEDED" New educational office now open. No exp. req. 678-9888.

"AVON" Buy or sell. Call Asst. Mgr. Mary, Ind. sales rep. 455-8397.

"AVON" BE YOUR OWN BOSS

For the best earnings possible

\$5 CALL \$5 THIS AD ONLY

Kandy 235-7641 or Jo 395-6970

Independent sales rep.

"CHINESE, European-speaking people earn \$5"

Call Mr. Lee, 949-5000.

\$4000/MONTH, P/T

I did it. If serious/motivated, call 455-5311.

WHEN IT'S TIME FOR RESULTS... call the Classifieds, 235-5881.

60 Help Wanted Male/Female

A FRESH START

\$800 - \$5000 a month. P/T, F/T. 486-7222.

A CHIEVERS Overworked? Underpaid?

Nat'l Health/Environmental Co. Rapid growth. Earn your worth! Appt. only 944-0493.

ACTORS/ACTRESSES

9 people needed for TV movie. Open call. Must be motivated. 845-4494.

ASSEMBLE ARTS

Toys in your spare time. Earn extra \$\$ Typing, electronics, & more. Call 1-800-786-0409.

BEAUTY AID

Co. exploding in the USA. Looking for motivated, determined individuals to fill key positions in HI. Sorry no door-to-door or telemarketing. Ask for the director, 677-7744.

BILINGUALS

Needed. P/T & F/T. \$4000/mo. 486-0007.

COMPANY expanding fast. We need people, P/T-F/T avail. Work from your home. 455-2178.

COMPUTER users needed. Work own hours. \$20K to \$50K/yr. 24 Hrs. 1-714-363-4176 x3136.

HEALTH & Environmental Products.

2 offices on Oahu seeking ambitious & responsible individuals. Ideal opportunity for military also. No experience or advanced education needed. We train. 678-9372

ETC., ETC., ETC.

Cars, Homes, Jobs, Merchandise. Professional Services, you name it. Whatever you're looking for to add to, update or improve your life...you'll find in the Classifieds, 235-5881.

CREDIT CARD BLUES?

Earn Extra Income

- Inventory takers
- No experience necessary
- Paid training program
- Competitive wages
- Advancement opportunities

If you are at least 18 yrs. old, have access to reliable transportation & communication, contact us for an interview

**Pearlridge • 484-9299
Honolulu • 941-2282**

RGIS INVENTORY SPECIALISTS

An Equal Opportunity Employer

COMPUTER MAINTENANCE TECHNICIANS

LTTS is bidding on a JICPAC contract requiring personnel experience in IBM 3090-40E mainframe, processor, and associated peripheral O&M.

Send resumes in confidence to:

LORAL

Training and Technical Services
NAVSUBTRACENPAC
Bldg. 1262, Rm. 223
Pearl Harbor, HI 96860
Attn: B. Duplex

EOE M/F/V/D

60 Help Wanted Male/Female

HOUSE OF LLOYD

Earn extra money. \$300 K/U/Training provided. I'm also booking parties. No obligation - call now! Danna, 254-2133.

JANITOR & maint.

opening w/ exp. for commercial bldg. Studio w/ util. + sal. Send resume to P.O. Box 326, Wehiawe, HI 96786.

KIDS! KIDS! KIDS! NEWSPAPER CARRIERS NEEDED

Ages 10 and up

Earn Your Own Money

Delivering Sun Press Newspapers

One Day a Week.

Barbers Point: Immediate openings! Area: P.O. Box 194, Aiea, HI 96701.

LOSE 10 TO 29 LBS.

In 30 days. Oahu. 624-9000 or 423-0100.

MILITARY SALES POSITION F/T, retired military welcome. Windjammer Dinner Cruises, 531-0286 ext. 311 or fax resume to Barbara, 533-2998.

NEED MONEY?

Work from home. Great Pay! Rush SASE: American Pub. Co., P.O. Box 194, Aiea, HI 96701.

NO EXPERIENCE NECESSARY! \$500 to \$1000 weekly potential! Processing mortgage refunds! Own hours! Call 1-213-891-6026 ext. 819 (24 hours).

OPTOMETRIC ASST. P/T, F/T, evs. & wknds.

will train. 236-2668.

P/T - F/T SALES & MANAGEMENT positions open. Apply to be trained for openings for future Windward office. Share company profits. Windward residents welcome. 591-3675.

PIZZA MAKERS, delivery drivers, ass't. mgrs. Japanese/English speaking. SIMONE'S PIZZERIA 870 Kapaehulu, 739-1837.

SALES & SERVICE. We will train. Salary, benefits. Call 735-6454.

SALES PERSONS NEEDED for seminars & audio tapes. Part time. will train. 988-8077.

SERVERS WANTED

Professional, well-groomed, personable. Mid-Pacific Country Club. Call 262-8181 ext. 225 for information.

TEACHER qualified person for Asst. Director, competitive salary; Fall 5th grade & 10 hrs./wk. Art for Christian School in Kailua. 262-8501.

TELEMARKETERS

9 needed. Salary + commissions. Benefits. flex hrs. Call 735-6452.

THE WORLD'S FASTEST growing environmental solutions co. is looking for highly motivated individuals to help with expansion. Call 422-4458.

TRI-CHEM BUY, DONATE OR SELL

Billie Ching, 235-2672.

GET MORE MILEAGE FOR YOUR DOLLAR IN THE CLASSIFIEDS! If all those odds & ends are driving you crazy, sell 'em for extra cash through the Classifieds. Call today and place your ad. Buyers and sellers agree, the Classifieds are a bargain. 235-5881.

Call Today!

60 Help Wanted Male/Female

MOENELUS Housing: Get Debra at 423-1858 or Circulation office at 235-5881.

Pearl Harbor: Routes available in the Halekoku area. Call the Circulation office 235-5881.

Wahiawe: Routes available in all areas. Call Circulation at 235-5881.

Call Today!

McCallister's Beds & Furniture

SALE!

Mahogany Chests, Bookcases and Large Dressers also Available

USED BED SETS

Call for availability

TWIN '\$65' +

DOUBLE '\$80' +

QUEEN '\$100' +

KING '\$125' +

UNFINISHED CHESTS

5 Drawer, Reg. 75

20" Wide '\$59'

KING KOIL

New Bed Set

TWIN SET '\$189'

DOUBLE SET '\$229'

QUEEN SET '\$314'

KING SET '\$449'

6 DRAWER MAHOGANY UNFINISHED DRESSER

28 1/2" x 27 1/2"

Sale! '\$194.25' +

2333 Alahua Place

841-4251

64 Domestic Jobs Wanted

2 EXPER. MOMS will baby-sit in our home. Mon.-Fri. 5:30am-6:00pm. Enchanted Lake area. 263-3759 or 261-5501.

CHILD CARE State Reg.

PATCH cert. 5+ yrs'. exp. Reits. avail. 239-7608.

CHILD CARE, my home F/T/P. Kaneohe, 8 am to 6 pm. M-F. 235-5491.

EXP. CHILD CARE

PATCH/Infant Aid/CPR certified. 235-8409.

EXP. NURSE'S AIDE will care for elderly in my home. Long-term or short-term. 488-7138.

EXPER. CHILD CARE in Milliani. Ages 2 & up. Preschool activities, meals. 626-1202.

FUN, AFFORDABLE

Day-care avail. Crafts, toys. TLC Mon.-Fri., Makakilo. 672-0361.

KANEONE child care. Full time. Call 247-7259.

PROFESSIONAL QUALITY CARE FOR ELDERLY in licensed care home. 247-1139.

TLC & FUN MOM will care for 1 to 4 children start 6/26. 235-1881.

WILL BABY-SIT, my home, all shifts. F/T, P/T, ages 2 & up. 626-0165.

120 Home Furnishings

WANTED

Used furniture in very good condition. Dressers, beds, bookcases, etc.

Paradise Furniture

235-8056

BIG SALE Dining set w/6 chairs, hutch, enter. center, kit. table w/4 chairs, refrig., stove, washer, coffee table, & misc items. All excl. cond. 261-1402.

BIG SALE: Koa rockers & chairs by master chair maker. S. I. K. 293-8392.

BLACK LACQUER & Glass dining set, \$250. Solid oak bookcase, \$25. Single headboard, \$15. 3-drawer dresser, \$15. 2-draw. \$35. 261-5412.

DINING TABLE 6 CHAIRS Queen sleeper/sofa, dresser/mirror w/ matching desk & hutch, rattan chair w/footstool, large rattan shelf, older micro., large magazine rack, kitchen stuff, plants & lots of miscellaneous. 528 Palawiki. 261-4016.

DRESSERS, beds, bunk beds, desks, dining sets, sofas 262-4440.

123 Moving/Storage

AMERICAN INT. CARGO, FLY CAR TO LAX, \$1175. FASTER THAN BOAT AND SAFER. FOR MORE INFO, COME TO 111 KEEHI PL. AT HONOLULU AIRPORT.

1-808-836-0658 or 1-800-642-5121.

GET MORE MILEAGE FOR YOUR DOLLAR IN THE CLASSIFIEDS! If all those odds & ends are driving you crazy, sell 'em for extra cash through the Classifieds. Call today and place your ad. Buyers and sellers agree, the Classifieds are a bargain. 235-5881.

TRI-CHEM BUY, DONATE OR SELL

Billie Ching, 235-2672.

GET MORE MILEAGE FOR YOUR DOLLAR IN THE CLASSIFIEDS! If all those odds & ends are driving you crazy, sell 'em for extra cash through the Classifieds. Call today and place your ad. Buyers and sellers agree, the Classifieds are a bargain. 235-5881.

Call Today!

125 Home Appliances

18 CU. FT. FRIG., \$75;

So fabed, \$250;

microwave, \$50. 262-0434

KENMORE REFRIG. side-by-side w/ice maker. \$350. Elect. stove 30". \$150. Micro/convection make offer. 261-7162.

WESTINGHOUSE white, stackable washer, \$75. 571-4272 pgr., 261-7069. 262-4326

GARAGE SALE

BEACH FRONT HOME MOVING SALE 6/24/95.

Lots of good stuff! Watch new week for details!

BUYERS & sellers agree that the classifieds are a real bargain. 235-5881.

PROFESSIONAL SERVICES

PROFESSIONAL SERVICES:

- Accounting/Bookkeeping - Appliances - Blinds/Drapes - Business Cards - Cabinetry - Carpentry - Carpets - Clearing - Clerical/Typing - Computer Service - Contracting/Construction - Drafting - Electrical - Entertainment - Equipment Rentals - Fencing - Financial Services - Flooring/Tiles - Graphics/Printing - Handyman - Hauling - Insurance - Landscaping - Legal Services - Masonry - Massage Therapist - Painting - Picture Framing - Plastering - Plumbing - Professional Services - Property Management - Remodeling - Repair - Resumes - Roofing - Screens & Jalousies - Sewing & Alterations - Telephone Service - Termite/Pest Control - Towing - Tree Trimming - Vinyl Siding - Wallpaper - Weddings - Yard Service

For as little as \$28.21 per mo. you can place a 3-line Sun Press Professional Service ad. Call today for details. 235-5881.

We'll Go To Your Home and Repair... CDs VCRs

\$50 FLAT

3-Mo. Warranty

JUNE SPECIAL Hazeltel 220-0969

Coupon expires 7-5-95

Carpentry

A CARREIRA Home Repairs & Painting. One call we do it all. Free est. Call 239-4857. To \$1000.

AFFORDABLE QUALITY Repairs. All types. To \$1000. Jerry, 247-0582.

RENT A MAN wall repair, sliding windows, termite, tiles, kitchen & bath, yards. To \$1000. Call Marcel, 261-8301.

Catering

KAMAANA FOOD SERVICE

Local Food, Luau, Lau-lau, Continental Cuisine. Everything from Simple to Formal Catering! 487-3311

We Do It All! 10% MidWeek Discount FREE Consultation

Clerical Typing

RESEARCH, DELIVERY & QUALITY TYPING

Affordable. 422-9700 or pager 641-7984.

BAG & BAGGERS in the Classifieds...Your super marketplace of items for sale, services to offer...and 1001 other things! 235-5881.

Computer Services

COMPUTER DOCTOR

Individual Instruction and System Service. 254-5555

COMPUTER REPAIR

Upgrades & diagnostics. Mil. discount. 456-6809.

COMPUTER WOES? Call PC TUTOR for instruction or repair. Ask about our reduced rates. 9 to 9, 7 days. 528-2156.

Contracting & Construction

BARZILAY CONSTRUCTION

New work, repair, additions. Don. 373-2435 lv. msg. Lic. BC-15260.

GENERAL CONTRACTOR

BC-16813. Specializing in New Additions & New Homes. Plans & Permits. Insured & Bonded 262-1205

Hawaii law, Chapter 444, HRS, prohibits any person, corporation or entity from offering or entering into construction work without a contractor's license issued by the Contractor's License Board. Appearance in this classification does not mean the license issued to the listed contractor may still be current and valid. If you have any questions concerning a contractor's license, please contact the Department of Commerce and Consumer Affairs Licensing Board at 588-3000. To file a current complaint, call 587-3222. To check on a contractor's complaint history, call 586-2677.

Contracting & Construction

LAU'S CONTRACTING

Contract remodeling & repairs. Bldg or mail. C-9044. Call 486-0448.

Fencing

"AMERICAN FENCE"

Galv. alum., aluminumized, & vinyl-coated chain-link. Largest inventory in the Islands. Also have wood, aluminum, ornamental & vinyl fencing. Gate operators for security & convenience avail. for all gates. We will match any written quotation. C-18697 For FREE ESTIMATE call 455-4591

PARADISE FABRICATION. Chain-link, redwood & wrought-iron fencing, railings, security bars. Gen. welding. To \$1000. 261-5944.

Handyman

"AAA J L HANDYMAN"

Home Repairs & Renovation. Carpentry, Water Rot, Termite, Drywall & Ceramic Tiles. To \$1000. Call 236-0052.

"AA PACIFIC MAINT."

Islandwide home repair, est. to \$1000. 637-0674.

ISLAND BEAR HOME REPAIR 1 call does it all. Remodeling. To \$1000. Richard. 262-9573.

WINDWARD FIX IT

Complete Handyman Service. Affordable. To \$1000. Ph. 247-4554.

WHEN IT'S TIME FOR RESULTS... call the Classifieds, 235-5881!

Hauling

"A+" Delivery & Moving, appls. car, 737-9682, dig. 268-9227, 7 days. 24 hrs.

Landscaping

JACOBSEN SERVICES

Landscaping, installation. C-19673. 262-0184.

Legal Services

COURTS-MARTIAL & Military Law. Civil Litigation Ray Allen Findlay, Esq. 1000 Bishop St. 528-2237

LOW LEGAL RATES!

"Divorce" "Evictions" "Work Comp." "Contracts" "Immigration. 946-4164. Sarah Courageous. Esq..

Masonry

ARTHUR MASONRY

driveway, sidewalk, retaining wall/rock/tile, foundation. Free est. C-19367 263-8703, 289-2696 pgr.

L.A.S. FINE MASONRY

Tile wall, marble, concrete, ceramic tile, stone wall, stucco & red brick. C-19212. 678-2523.

Painting

"HOUSE PAINTING"

Interior & Exterior. Repairs/Repair Termite Damage & Lumber. C-16813 - Fully Insured 262-1205

FATHER & SONS PAINTING

Islandwide. Neat & Fast. To \$1000. 254-1329.

L.A. PAINTING Free est. Lic. C-18928. Bert. 623-9577, pgr. 287-8984.

MILANI PAINTING COMPANY

Interior & Exterior Small Company, Small Price. Licensed & Insured. C-17108

Call David 623-0306

QUALITY PAINTING & wallcovering. 24 yrs. exp. To \$1000. 732-6703.

Property Management

JOHN DAUGHTERS & ASSOCIATES, INC.

261-9111.

Remodeling

PATIO new additions, repair, remodel. Clifford Iwane #C-4477. 677-4695.

Painting

"BILL AH NEE Painting"

Mildew treatment, \$375 Shingle treatment, \$500 20 yrs'. exper. Int./ext. houses. Reas.. Refs. Free est. To \$1000. 262-5973

Repair

SINGER SEWING Repairs - Clean, Oil, Adj. tensions. All makes & models. Free est. Hm. 488-0427. 288-1276 pgr.

TV, VCR REPAIR

FREE Service Call 40% Discount 549-7785 (pager) 625-7345 (evenings).

Resumes

AAA RESUME SERVICE

"Get The Winning Edge". All types. 239-4777 24 hr.

ARMED FORCES RESUME SERVICE 18 Yrs. Exp. 521-7901

DIAMOND HEAD RESUME SERVICE

VISA/MC OK. 373-3166.

Roofing

RHINO ROOFING & REPAIRS INC.

Christian Owned Bus. - Free Estimates - All Types of Roofs - New & Repairs "27 Years" Exp. Lic. #C19618 & C18615 668-8878 Fax: 668-7024

Screens & Jalousies

SCREEN MACHINE June 10% off. Screens, jalousies & hardware repair. Great work, great prices! FREE window cleaning per repair. FREE est. Dave 623-4839.

IF A LITTLE extra cash would light up your life, turn on to the Classifieds

Sewing & Alterations

PROFESSIONAL sewing/alter. for all occasions. Free p/u & del. 239-5601.

Welding

WROUGHT-IRON fences, gates, grills, etc., to \$1000. 235-1832/239-8901

Yard Service

ADH BEAUTY YD. SVC.

All kinds. Quality work. Free est. Call 533-8837.

CALL RENO for mowing, hauling rubbish. Free est. 847-3608, pgr. 571-5128

COMPLETE SERVICE

Windward N Trim Free est. 238-3771.

COMPLETE YARD SVC.

& more. Affordable. Free est. Satisfaction guar. 262-5806 or 263-3970.

COMPLETE YD. SVC. & Repairs. Reliable. 843-0063/Pgr. 571-6730.

FLEXIBLE YARD SVC.

Mowing, hedge trimming, bi-weekly, etc. 842-9501. 576-8654 pager.

GEN. YARD SVC.

pruning, mowing, weeding. Free est. 263-0432.

J & D YARD SERVICE

Mowing, trimming, hauling. Free est. 254-9024.

YOU'LL BE AMAZED at the amount of money you can make on things you no longer need. They're someone else's treasure, and the Classifieds bring you together. Phone 235-5881 today!

BRING THIS AD IN AND PAY ONLY

ON ANY OF THE FOLLOWING
QUALITY USED CARS
(OFFER GOOD THRU. 6/22/95)

'94 FORD ESCORT LXs
4 dr, Auto, A/C, & P/S
FPF480 • PPF481
ONE PRICE **\$8,995**

'93 FORD ESCORTs
GT, LX WGN, 3 DR, & LX 4DR
FEE142 • FDY472 • EYP301
ONE PRICE **\$6,995**

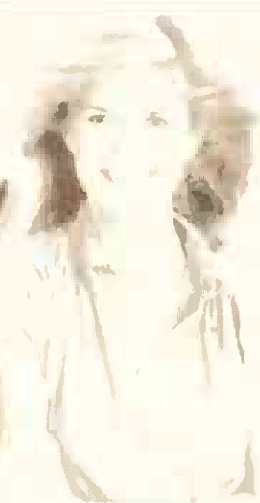
OR **\$199** A MONTH 60 mos.
OR **\$187** A MONTH 48 mos.

VEHICLE	NOW	MONTH
'89 DODGE LANCER A/C, P/S, Power, Cass • FTB893	\$4,795	\$184 30 mos.
'92 FORD TEMPO 2 dr, A/C, 18K • EV2562	\$4,995	\$147 42 mos.
'89 FORD TAURUS WGN 6 cyl, Auto, A/C, P/S, Power • FGB487	\$4,995	\$194 30 mos.
'86 TOYOTA CRESSIDA 6 cyl, Auto, A/C, P/S, & More • EFD362	\$4,995	\$194 30 mos.
'93 DODGE SHADOW Economy Car, Like New • EZW889	\$5,995	\$160 48 mos.
'89 HONDA ACCORD LXI 5 spd, Auto, A/C, P/S, Power • FRB344	\$6,995	\$273 30 mos.
'93 MUSTANG LX Auto, A/C, P/W, AM/FM Cass • FBP316	\$7,995	\$215 48 mos.
'92 FORD F150 6 cyl, P/S, AM Radio • 537TNJ	\$8,395	\$226 48 mos.
'91 NISSAN 240 SX Auto, A/C, P/S, Tilt • ECG741	\$8,995	\$268 42 mos.
'93 PONTIAC GRAND PRIX 6 cyl, Auto, A/C, P/S, Power • EXU426	\$9,995	\$246 54 mos.
'90 DODGE CARAVAN V-6, Auto, A/C, P/S, Power • MTK963	\$9,995	\$298 42 mos.

Credit on approval. Vehicles subject to prior sale. Terms written at 30.60 mos., 13.5% APR. Prices and payments with \$99 down plus tax, lic., and doc. fees. Vehicle not exactly as shown.

HONOLULU **FORD**
711 ALA MOANA • 523-8200 1-800-BUY-FORD

**TODAY
THROUGH MONDAY**
**43
USED CARS
TAKE YOUR CHOICE
YOU CAN
BUY NOW**
WITH JUST
**\$50 CASH
DOWN**



**"OUR
USED CAR
SWEEPSTAKES
SALE"**

NISSAN • FORD • JEEP • TOYOTA • HONDA •
DODGE • MAZDA • PONTIAC • BUICK •
MOST MAKES AND MODELS FOREIGN & DOMESTIC

ALL FROM JUST \$999
WINDWARD DODGE DOC. FEES OF \$175
46-177 KAHUNIPA ST., KANEONE • PH. 233-6000
*Credit on approval. Vehicles subject to prior sale.

"New" Chrysler • Plymouth • Jeep • Eagle • Hyundai

Hawaii's #1 and ORIGINAL
2nd Chance Financing!
All Inquiries Confidential Military Our Speciality
Drive A Car or Truck Home Today!
STOP CALL NOW!
1 HOUR PHONE APPROVAL
Low or No Money Down!

SAME DAY DELIVERY
500 NEW & USED CARS & TRUCKS TO CHOOSE FROM

FAX this completed form to **834-5961**
or you can MAIL or BRING IN to our convenient centrally located office at 2841 N. Nimitz Hwy. Honolulu, HI 96819 corner of Nimitz and Lagoon Drive

ATTENTION SPECIAL FINANCE DEPARTMENT
Name _____
Address _____
City _____
ZIP _____
Hm Ph _____
Work Ph _____
S.S. #/How Long At Present Job? _____
Type of Car Interested In _____
Signature _____

CALL JOHN LOGRASSO 836-0515 for any assistance

SOUTH SEAS Jeep • Eagle • HYUNDAI

"New" Chrysler • Plymouth • Jeep • Eagle • Hyundai

41 Point check for safety and performance before they appear on OUR lot!

SPECIAL ON PRE-OWNED SATURNS - '92-'94 MODELS OVER 30 IN STOCK, ALL EXCEL & PRICED TO SELL!! FIRST COME, FIRST SERVED

'92 Chevy Cavalier \$5,250
'92 Mazda B2200 \$8,750
'91 Ford Taurus Wgn \$8,895
'92 Saturn SL2 Sdn \$9,295
'93 Pontiac Grand Am \$10,488
'92 Saturn SC2 Cpe \$10,995
'93 Saturn SC1 Cpe \$11,595
'92 Saturn SC2 Cpe \$11,595
'93 Ford Ranger \$11,788
'93 Saturn SL2 Sedan \$13,895
'93 Ford Explorer \$17,589

SATURN OF HONOLULU
836-7007 2901 N. NIMITZ BY THE AIRPORT SATURN

Geo
'90 STORM Auto, gray, A/C, 39K mi., custom sunroof, \$5300/OBO. 739-2663.
'93 TRACKER Bk., manual, A/C, stereo, \$9995/OBO. 263-6974.

Lincoln
'80 LINCOLN MARK VI Everything New! \$6,500/OBO. 455-2444.

Mazda
'79 RX7 runs excl., AM/FM cass., 70K mi., \$1800/OBO. 844-7986.
'81 MAZDA Runs OK needs ignition work. \$300/OBO. 259-8310.
'83 RX7 new paint, excl. cond., AM/FM cass., \$2500/OBO. 455-4086.

Mercedes
'65 MERCEDES 220 2 dr. leather, new paint, Koa wd. panels, A/C, stereo, \$11,000/OBO. 735-4961.
'73 SLC red/blk., A/C, pwr., low mi., tour pkg., cash/OBO. 735-4961.

Mercury
'94 TRACER excl. cond., A/C, \$8900. 655-0775, ask for Sgt. Young.

Nissan
'89 MAXIMA 5 spd., A/C, cass./CD, sunroof, \$7000/OBO. 259-9508.

Oldsmobile
'85 CUTLASS V-6, A/C, P/B, P/S, new tires, \$1800/OBO. 261-7639.
'86 TORONADO V-6, new tires, brakes, paint, \$4000/OBO. 455-4086.

Honda
'80 ACCORD H/B, new muffler, current tags, \$300. Call 235-4002.
'83 ACCORD 4 dr., runs great, good cond., \$2200/OBO. 844-7986.
'84 PRELUDE A/C, sunroof, Runs great! \$2000. Must sell. 254-6044.
'89 ACCORD LX 5 spd., Auto, air, excl. cond., \$7300. 262-6947.
'90 HONDA ACCORD Auto, air, excl. cond., \$7300. 262-6947.

Chrysler
'84 NEW YORKER White, 1 owner, 88,000 mi. \$950. 235-0884.

Dodge
'88 COLT 5-dr. wagon, excl. cond., moving, \$2200/OBO. 247-6156.

Ford
'86 BRONCO II "Eddie Bauer." Rebuilt motor needs 1 head. 0 mi., \$3200/OBO. 261-7639.
'87 THUNDERBOLT V-8, all pwr., auto, \$3000. Day 529-7152, eve. 735-4966.
'92 TAURUS 4 dr., auto, low mi., A/C, P/S, airbag, cass., \$7600. 396-4107.

Acura
'91 INTEGRA LS. auto., loaded, excl. cond., \$11,500/OBO. 262-7308.

BMW
'89 735i 4 dr., auto, blue/gray, leather, sunroof, fully loaded, \$17,500. 536-1440.

Buick
'84 LESABRE 4 dr., new headliner, V6, good cond., \$1000/OBO. 235-4002.

Chevrolet
'72 MONTE CARLO good cond., auto., A/C, cass., \$2500. 422-0163.

CUTTER
FORD ISUZU
GO WITH THE WINNER!
#1 Retail Dealer in Hawaii.

New Cars from as low as...

'95 FORD ASPIRE
DUAL AIRBAGS • #B1821
SMALL PRICE • GREAT VALUE!
\$6,878*

'95 FORD ESCORT
#1 SELLING CAR IN THE WORLD! #50481
\$7,282*

'95 FORD RANGER P/U
ANOTHER FORD WINNER! #51781
\$8,274*

'95 FORD CONTOUR
RATED TOPS IN DRIVER SAFETY!
AC DUAL AIRBAGS CASSETTE! #51918
\$12,688

JUNE'S SUPER SPECIAL!
NEW '95 FORD F350 ONE TON CAB & CHASSIS
7.3 LITRE DIESEL
AC, OVR 107,000 L.S. #51481
\$23,479

'95 FORD T-BIRD
AUTO AC
ALL POWER!
\$15,949

'95 FORD WINDSTAR
THE FUTURE OF THE MINIVAN!
AC, 107,000 L.S. #51918
\$16,282

'95 FORD EXPLORER
AC DUAL AIRBAGS
SPECIAL PRICE \$17,396
\$17,489

'95 ISUZU RODEO
V-6 AC, 107,000 L.S. #51918
#1 IN SELLING SPORTS UTILITY VEHICLES
\$18,488

SPECIAL FINANCING AVAILABLE!
From 4.9% APR or CASH REBATES!
NO DOWN PAYMENT
Military Financing our Speciality

YES WE LEASE USED CARS!! CAN...
Lease with option to own. Limited supply. Selected models only. Call us for details.

CLEAN USED CARS & TRUCKS!

'86 PEUGEOT 4 DR. SDN \$1,195
'92 FORD MUSTANG LX \$5,995
'89 FORD F250 CSTM P/U \$9,895
'89 CHEVY S10 P/U \$3,995
'92 TOYOTA COROLLA \$6,595
'91 FORD F150 4X4 P/U \$9,895
'92 FORD ESCORT LX \$4,995
'93 EAGLE TALON \$7,495
'93 FORD T-BIRD LX \$11,995
'89 MAZDA 626 LX 4 DR \$5,995
'91 CHEVY LUMINA APV \$7,895
'94 VW JETTA GL III 4 DR \$11,995
'89 TOYOTA CAMRY \$5,995
'92 CHEVY CAMARO \$7,995
'91 FORD EXPLORER XLT \$12,995
'90 ISUZU P/U 4X4 \$5,995
'93 FORD RANGER XLT P/U \$8,895
'92 HONDA ACCORD EX \$12,995

98-015 KAM HWY • IN AIEA
OPEN: MON-SAT 8:30-9PM
SUNDAY 9AM-6PM
487-3811 Doc. fee **\$195**

GOT A SERVICE TO SELL?

M.A.S.H. Auto Sales
621-6280
152 Wilikina Dr. • Wahiawa • Open Sundays

\$49 DELIVERS*
WE FINANCE EVERYONE
MILITARY OUR SPECIALTY
E-1, E-2 & E-3S WELCOME

✓ GOOD CREDIT?
✓ BAD CREDIT?
✓ NO CREDIT

"In House Financing Available"

'77 CHEVY MALIBU 2DR. \$395
'80 TOYOTA CELICA \$595
'81 HONDA ACCORD \$795
'87 FORD ESCORT \$995
'82 DATSUN P/U \$995
'85 NISSAN SENTRA S/W \$1495
'85 CADILLAC DEVILLE \$1695
'85 CHEVY MONTE CARLO \$1995
'87 PLYMOUTH VOYAGER \$1995
'85 CHEVY S-10 BLAZER \$2695
'86 ISUZU TROOPER \$3995

WE BUY CARS FOR \$\$\$\$
WE DON'T CHARGE DOC FEES!
All prices plus tax & license. Subject to prior sale. Prices Good till 6/22/95 *O.A.C.

Volvo
'81 240DL S/W excl. cond., all maint. records, \$3000/OBO. 455-4086.
'85 740 TURBO Silver, 4 dr., Excl. cond. \$6500. 247-2665, 595-3687.

Volkswagen
'72 GHIA Runs great, \$2000/OBO. Call 595-7757 or 545-2812.
'74 SUPERBEETLE good cond., semi-auto, \$2000. 524-2035 lv. msg.
'76 CONVI. BUG, new eng., good cond., wht./whi., \$4800/ovr. 678-8815.
'81 RABBIT convt., 5-sp., runs great, no rust, \$3000/OBO. 236-4115.
'86 JETTA, standard, sunroof, AM/FM cassette, \$4000. 584-6534 pager.

Toyota
'85 TERCEL H/B, auto., air, 63K mi., \$1200/OBO. 732-5756 or 395-9972.
'87 TERCEL Does not run, used for parts. \$400/OBO. 945-3529.

Rolls-Royce
'73 SHADOW looks & runs excl. New exterior. \$20,900/OBO. 395-8209.

Mercedes
'76 240D Runs good, \$2000/OBO. 595-7757 or pgr. 541-6918.
'77 280E Outstanding cond. All original. 6 cyl. \$5900/OBO. 395-3773.

Mercury
'94 TRACER excl. cond., A/C, \$8900. 655-0775, ask for Sgt. Young.

Nissan
'89 MAXIMA 5 spd., A/C, cass./CD, sunroof, \$7000/OBO. 259-9508.

Oldsmobile
'85 CUTLASS V-6, A/C, P/B, P/S, new tires, \$1800/OBO. 261-7639.
'86 TORONADO V-6, new tires, brakes, paint, \$4000/OBO. 455-4086.

For the Best in Home, Apartment & Condominium Listings, check the classifieds.

126 Miscellaneous

"VIDEO GAMES"
Buy-Sell-Trade-Rent
Sega-NEOS-Game Boy
3DO-32X-Game Gear
Nintendo-Game Boy
Makiki Video &
Game Exchange
1249 Wilder Avenue
537-6611

AIKIDO SPARRING gear,
\$25. Patrick Nagel ser-
graph, \$150. 261-5412.

**BEAUTIFUL HIDE-A-
BED**, \$300. Oak entertain-
ment center, \$200. Other
stuff, 263-0954.

CARPET 22 x 12 & hall,
Scotchguard, excl. con-
d., \$200. 833-6768.

CLIFF'S Economy Furn. &
Thrill Shop, 1716 N.
King St. Ph. 841-4443.

FISHER STEREO system,
dual cass., turntable,
\$200/OBO. 254-2895.

HAWAIIAN King quilts
with shams, \$550 ea.
Call 487-3700.

MARANTZ Tuner &
Amp., \$50. Large wetmap
bucket, \$25. 825-7833.

MISC. WOOD DOORS,
2 Blinks appt booth w/
exhaust fans, display
cases, modular office
units, whse, wall racks.

V & L Enterprises
922-C Austin Lane. (Near
Tamashiro's Market.)
Hours 9-5. Ph. 538-3553.

MOVING MUST SELL
Caldera spa, seats 6,
New 6-ft. glass sliding
door, Furniture, clothes,
baby items. 395-7986.

NECCHI SEWING
Machine \$20.
Call 373-1121.

NINTENDO GAMES
\$5 each. Wide variety to
choose from. 825-5301.

OPIHI FROM ISLE
for Luau, \$189 per gal.
\$99 per 1/2 gal.
Phone Oahu, 262-7887.

**ROESKI KAYAK & pad-
dle**, \$500. Rattan furn.,
\$700. 262-5351.

SEARS 10' x 14' SHED
w/metal foundation.
\$300/OBO. 422-5754.

**SLEEPER couch, coffee/
end table, recliner, air
hockey**, 6' 9" surfboard.
Makiki area. 872-3801.

WEIGHT BENCH w/ all
wts. & access., \$150/
OBO. 254-2895.

ZENITH CAMCORDER
perfect cond., all access.,
\$200/OBO. 254-2895.

127 Miscellaneous

Wanted

40TH STATE LABEL 78
rpm record, #131, by
William Namahoe,
"Stranded of the
Strings". Leonard
Kwan's "Opini Moe
Moe". (45 rpm only).
And others. 395-5205.

WANTED
DON BLANDING Dishes
Looking for patterns w/
fish, or water lilies.
Dishes, cups & saucers.
237-8276.

WANTED

Collectibles, antiques,
HAWAIIAN items, books,
papers, jewelry,
anything of value.

THE HUNTER

262-4668
764 Kailua Rd., Kailua

132 Computers

IBM COLOR MONITOR
\$50. Monochrome
monitor \$30. 625-5301.

**DON'T get swamped by
inflation. Let the
Classifieds keep you
afloat.** Phone 235-5881

141 Video Taping

FILMS TRANSFERRED
to video. VHS & Ni-
ntendo machines repaired.
Econ Photo, 239-4295.

144 Musical Instruments

GODIN ARTISAN New,
never played, Protec bag.
\$1000/OBO. 422-6162.

147 Sporting Goods

BOW-HUNTING equip-
ment - bow-hunters dis-
count warehouse. Amer-
ica's largest archery
supplier. Stocks over
5000 bow-hunting items
@ 20-40% Off retail. Call
1-800-735-2697 for free
160-page catalog.

OLYMPIC WEIGHT SET
New lat machine w/
benches. \$600. 247-6536.

SOLOFLEX All attach-
ments. Excl. cond. \$500.
Call 254-0500.

148 Water Sports Equipment

WAVE MAST heavy
duty, \$35. "Windservic"
glass, 9'1" sailom board,
\$300. 261-5412.

151 Pets/Everything

ADORABLE SPRING KIT-
ten, all colors, 2-mos.-
old, long-haired, \$35/ea.
269-6878.

AKC MINI SCHNAUZER
pups, 2 M, 2 F. \$500. Pay-
ments OK. 682-5641.

AKC SCOTTIES 8 wks.,
shots, blk. female, wheat
male, \$500 ea. 239-5453.

ALL PRIVATE obedience
training! Puppies &
Adults. Dog learns both
Basics & Advanced for
\$150. LIFETIME GUAR.
NO ABUSE! 696-4357.

CAT/BIRD VET MOBILE
Affordable house calls.
All pet doctor. 623-5466.

COCKATOO w/ large
cage, was \$1200, now
\$800 cash. 839-1258.

FEMALE COCKER
SPANIEL AKC, 2 yrs.,
moving. 395-7986.

GROOMING Cocker, pod-
dle, schnauzer, etc. \$25,
on Hickam. 422-4009.

IN need of quality
affordable vet care? Dr.
Eric Pearson's Home Pet
Svc. 261-6000 islandwide.

166 Pickup Trucks

'86 ISUZU PICKUP
Runs. \$500/OBO
422-5754.

'87 NISSAN TRUCK w/
camper shell. Runs great.
\$2900/OBO. 396-1193.

'88 CHEVY SILVERADO
350 ci V-8, tow pkg.,
fully loaded, 54K mi.
Excl. cond. must see.
\$10,400/OBO. 487-2804.

'91 NISSAN KING CAB,
5 spd., low mi., AM/FM,
camper, \$8000. 988-4269.

171 Motorcycles & Scooters

'70 HARLEY-DAVIDSON
California Chopper.
#20110, \$5,995 plus
DOC, Tax & Lic.

'87 KAWASAKI 600
ELIMINATOR #P5935,
\$2,495 plus. DOC, Tax &
Lic.

172 Motorcycles & Scooters

'84 LESABRE 4 dr., new
headliner, V6, good cond.,
\$1000/OBO. 235-4002.

Chevrolet

'72 MONTE CARLO
good cond., auto., A/C,
cass., \$2500. 422-0163.

Chevrolet

'72 MONTE CARLO
good cond., auto., A/C,
cass., \$2500. 422-0163.

Chevrolet

'72 MONTE CARLO
good cond., auto., A/C,
cass., \$2500. 422-0163.

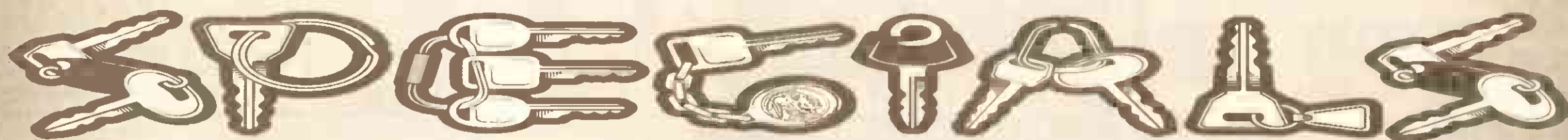
Chevrolet

'72 MONTE CARLO
good cond., auto., A/C,
cass., \$2500. 422-0163.

Chevrolet

'72 MONTE CARLO
good cond., auto., A/C,
cass., \$2500. 422-0163.

FATHER'S DAY



Surprise Dad With A New Set of Wheels! Great Deals! Savings! Financing Available!

'89 MERCURY TRACER 4 Door Wagon, Low Mileage, Hurry! FYY-616 \$3,995	'85 TOYOTA TERCEL 2 Door Hatch Back, Automatic, Super Clean! FDX-512 \$2,995	'84 HONDA CIVIC 4 Door 5 Speed, Low Gas Mileage, Won't Last! FCE-263 \$3,695	'91 ISUZU PKUP 5 Spd, AM/FM Cass, Chrome AWheels, Low Mi. EXN-944 \$5,295	'91 CHEVY S10 BLAZER Auto, V6, A/C, Pwr Windows, Tilt Cruise, 4 Dr. 642-TGR \$8,995
'85 TOYOTA TERCEL 2 Door Hatchback Automatic, Priced To Sell! FNC-800 \$2,995	'87 TOYOTA TERCEL 2 Door Hatchback, Super Shape Hurry! FHG-183 \$3,795	'88 DODGE CARAVAN A/C, Tilt, Cruise, Low Mi., Cherry! FSU-117 \$8,995	'85 MAZDA 626 2 Door Automatic, A/C, Power Windows. FVX-253 \$2,995	'89 FORD BRONCO II Auto, V6, AM/FM, New Paint GBY-314 \$5,995
'84 HONDA CIVIC 2 Door Automatic, Low Mileage, Great Shape! FDA-669 \$3,695	'93 CHEVY S-10 XTRA CAB Std., AM/FM Cass., EVN-819 \$9,995	'93 JEEP WRANGLER Conv., 4WD, AM/FM Cass., EXE-462 \$10,995	'86 CHEVY NOVA 4 Door Automatic, Super Clean, Must See! CDX-527 \$3,900	'91 NISSAN PKUP 5 Spd, Super Clean Truck EJJ-229 \$5,295
'92 MAZDA B2600 SES AM/FM Cass, A/C, 4WD ENE-225 \$11,995	'93 GEO TRACKER Convertible, Super Nice, Clean. FXS-019 \$8,995	'88 VW VANAGON Automatic, A/C, Seats 7, Won't Last! FYG-031 \$6,995	'93 FORD RANGER XL, 5 Speed, Alpine Stereo, Super Condition! EXP-464 \$8,695	'90 CHEVY ASTRO CARGO VAN V6, Auto, New Paint, Great Condition 476-TJP \$6,995

Vehicles subject to prior sale Price + tax, lic. & DOC fee

STOP HERE FIRST!

Mon-Sat 9am-9pm ■ Sunday 10am -6pm
94-097 Farrington Hwy. Waipahu

676-2220

\$2000 Off or \$2500 Guarantee Trade-In Value

Only valid if presented to salesman before deal is negotiated. One coupon per purchase. Not applicable on sale items.

PFLUEGER CAR & TRUCK CENTER



**THE NEW VERDICT
IS IN.....**

**YES. YOU CAN BUY
AND FINANCE
A NEW HONDA**

OR ANY OF FIFTY PRIME USED CARS AND TRUCKS

EVEN IF YOU ARE.....

✓ BANKRUPT **✓ BEEN REPOSSESSED**

✓ CHARGED OFF ✓ HAVE TAX LIENS

OR YOUR CREDIT STINKS!

CALL ME

EXT 3

ROGER DINMORE 487-5595

ABOUT OUR ALL NEW

"9 LIVES" CREDIT "LIFE SAVER" PROGRAM

WE'RE THE ONLY HONDA DEALER THAT HAS IT.

YOU CAN HAVE THE CAR OF YOUR CHOICE TODAY. 1 HOUR APPROVAL.

TONY HONDA
PEARL RIDGE

98-051 KAMEHAMEHA • 487-5595

TO APPLY BY FAX OR MAIL SIMPLY FILL OUT FORM BELOW

APPLY BY PHONE, FAX, MAIL, or IN PERSON
TONY HONDA 98-051 KAMEHAMEHA HWY., AIEA HI 96701

CALL: 487-5595 Ext 3. ASK FOR MR. ROGER DINMORE
OR FAX: 488-8803 for your auto loan APPROVAL

Name: _____ Spouse: _____
 Address: _____
 City: _____ State: _____ Zip: _____
 Date of Birth: _____ Spouse: _____
 Social Security #: _____ Spouse: _____
 Employer: _____ Gross Income: _____ Years: _____
 Spouse Employer: _____ Gross Income: _____ Years: _____
 I hereby authorize Tony Mondo to check my credit
 Signature: _____ Joint Signature: _____
 Phone Hm: _____ Wk: _____

HOTTEST SALE OF LOW PRICED USED CARS

IN THE HONOLULU MARKET

4 DAYS ONLY

**\$95 DOWN DELIVERS ANY CAR
MILITARY OR CIVILIAN**

VEHICLE	NOW!	TERMS
'85 NISSAN SENTRA FDJ135	\$1,499	\$163. ⁸⁰ MONTH
'86 CHRYSLER LeBARON FTC073	\$1,666	\$124. ⁴⁵ MONTH
'87 PONTIAC SUNBIRD FRF279	\$1,777	\$102. ⁶¹ MONTH
'88 FORD ESCORT EUS450	\$1,899	\$90. ³⁹ MONTH
'87 PLYMOUTH SUNDANCE FEJ186	\$1,999	\$146. ³⁸ MONTH
'87 NISSAN SENTRA CJB131	\$2,555	\$142. ⁵¹ MONTH
'88 MAZDA MX-6 FEA024	\$2,666	\$123. ⁰⁵ MONTH
'84 HONDA ACCORD ESA585	\$2,999	\$306. ⁴¹ MONTH
'83 HONDA PRELUDE EFG535	\$2,999	\$165. ²⁸ MONTH
'85 HONDA ACCORD EXW531	\$2,999	\$212. ⁴⁴ MONTH
'84 BUICK RIVIERA FDA402	\$3,999	\$216. ⁵⁷ MONTH
VEHICLE	NOW!	TERMS
'90 FORD TEMPO FZT331	\$4,222	\$189. ³¹ MONTH
'88 BUICK PARK AVENUE FTP661	\$4,444	\$171. ⁶² MONTH
'88 OLDS CIERA FSJ755	\$4,555	\$175. ⁹¹ MONTH
'90 CHEVY CELEBRITY WAGON MTT218	\$4,777	\$184. ⁰⁶ MONTH
'88 ACURA LEGEND FUR054	\$4,999	\$267. ⁹⁸ MONTH
'90 FORD TEMPO FFR588	\$4,999	\$170. ⁸⁵ MONTH
'92 SUBARU LOYALE ESE616	\$7,999	\$243. ⁸⁹ MONTH
'93 SUBARU IMPREZA MZD012	\$8,999	\$273. ⁵⁶ MONTH
'94 HYUNDAI EXCEL FYX	\$8,999	\$251. ⁴⁴ MONTH
'94 SUBARU IMPREZA FF538	\$10,999	\$306. ⁴⁶ MONTH
'93 TOYOTA CAMRY FBU251	\$13,999	\$361. ⁸⁵ MONTH

DOC. FEES OF \$195

*Credit on approval. Vehicles subject to prior sale. Terms written at 12-54 mos., 15.9% APR. Prices and payments plus tax, lic., and doc. fees of \$195.

TONY HONDA
USED CAR CENTER
98-051 KAMEHAMEHA • 487-5595

MIKE SALTA PONTIAC • LINCOLN MERCURY • ISUZU

ISUZU

'95 ISUZU AMIGO

2 IN STOCK
2 AT THIS PRICE

JUST LOOK WHAT YOU GET FOR THIS PRICE!

- 2.6L Engine
- 4 Wheel Drive
- Power Steering
- Removable Vinyl Top
- AM/FM Stereo Cassette
- Rear Anti-Lock Brakes
- Tinted Glass
- Reclining Bucket Seats
- Power Mirrors
- Center Console With Storage

\$15,995

PONTIAC

'95 FIREBIRD

12 IN STOCK
1 AT THIS PRICE

JUST LOOK WHAT YOU GET FOR THIS PRICE!

- Automatic Trans
- 3.4L SFI V6 Engine
- Air Conditioning
- Dual Air Bags
- Anti-Lock Brakes
- Center Console
- Carpeted Floor Mats
- Power Windows
- Power Door Locks
- 24 Hr. Roadside Assistance
- Keyless Remote Entry
- Sport Mirrors

\$17,995

PONTIAC

'95 MERCURY TRACER

20 IN STOCK
15 AT THIS PRICE

JUST LOOK WHAT YOU GET FOR THIS PRICE!

- 1.9 Liter SEI Engine
- This Package (on most)
- Alloy Wheels, Rear Spoiler, Leather Wrapped Steering Wheel
- Power Steering
- Rear Window Defogger
- Light Group
- Air Conditioning
- Remote Lock/Unlock
- Auto Trans

\$11,995

ISUZU

'95 ISUZU RODEO

30 IN STOCK
15 AT THIS PRICE

JUST LOOK WHAT YOU GET FOR THIS PRICE!

- V-6 Engine
- Auto Trans
- Air Conditioning
- Power Steering
- Rear Anti-Lock Brakes
- AM/FM Stereo Cassette
- Aero Roof Rack
- Tinted Glass
- Rear Window Defogger
- Side Impact Door Beam
- Outside Spare Carrier With Cover

\$19,995

PONTIAC

'95 GRAND AM

28 IN STOCK
4 AT THIS PRICE

JUST LOOK WHAT YOU GET FOR THIS PRICE!

- 2.3L Quad 4 Engine
- Power Steering
- Air Conditioning
- Tilt Steering Wheel
- 16" Alum. Wheels
- 4 Wheel ABS
- Power Door Locks
- AM/FM Stereo Cassette
- Driver's Air Bag
- 24 Hr. Roadside Assistance

\$12,995

PONTIAC

'95 MERCURY VILLAGER

19 IN STOCK
3 AT THIS PRICE

JUST LOOK WHAT YOU GET FOR THIS PRICE!

- 3.0 L V6 Engine
- Power Rack & Pinion Steering
- Power Anti-Lock Brakes
- Front & Rear A/C
- Driver's Air Bag
- AM/FM Stereo Cassette
- 7 Passenger Seating
- Tilt Steering Wheel
- Alum. Wheels
- Dual Power Mirrors
- Power Windows
- Privacy Glass (Tinted)
- Power Door Locks
- Dual Vizion Mirrors
- Cruise Control
- Power Drivers Seat
- Front & Rear Floor Mats

\$19,995

MIKE SALTA
28th Anniversary
HAWAII

STORE HOURS:
MON.-FRI. 8:30am-9:00pm
SAT. 9:00am-9:00pm
SUN. 10:00am-6:00pm

MIKE SALTA

PONTIAC
LINCOLN
MERCURY
ISUZU

HONOLULU:
2945 W. Ilihi Dr.
Ph: 836-2281

WAIKAPU:
24-212 Leolu St.
Ph: 871-8033

All vehicles subject to prior sale. All factory rebates & incentives to be retained by the dealer. Prices are plus tax, license & \$197 doc fee. Offer ends 6/21/95

CUTTER

DODGE CHRYSLER PLYMOUTH JEEP EAGLE

Dillingham Dodge Pearl City

#1 in the State in Sales • Service • Parts!

Receive a one month's membership at any Gold's Gym location when you come in & test drive any vehicle today!

'95 Dodge Dakota Sport

4 TO CHOOSE! Just

P/S, P/B, SPORT PACKAGE & MORE!
#10598
#10597
#10570

\$99/mo.
24 mo

NEW! '95 Neon

AIRBAG, POWER STEERING, POWER BRAKES, & MUCH MORE!
#10214

STARTING AT... \$9,988

New '95 Dodge 1500 Fullsize Truck

MAGNUM ENGINE, REAR STEP BUMPER, P/S, P/B & MUCH MORE!
#10825

STARTING AT \$11,988

'95 DODGE CARAVANS or '95 Plymouth Voyagers

210 AVAILABLE! A/C

UP TO \$2100 in REBATES! 2 TO CHOOSE!

A/C, AM/FM STEREO, P/S, P/B, AIRBAGS AND MORE!
#10241B
#10720

\$12,988 or \$199/mo.
24 mo

'95 Dodge Avengers

A/C, FLOOR MATS, AM/FM CASSETTE, W/LOCK CRUISE CONTROL, P/S, P/B & MORE!
#10241B
#10720

2 TO CHOOSE!
\$13,488

'95 Eagle Summit WAGON!

CLOTH BUCKET SEATS, A/C, AUTO, PSPV FLOOR MATS & MUCH MORE!
#10241B
#10720

5 TO CHOOSE!
\$13,488 or \$219/mo.

CUTTER DODGE WAS THE FIRST DEALER IN HAWAII TO PERFORM Credit Magic

WE HAVE ALWAYS RECOGNIZED THE DEMAND ON YOUR TIME IN TODAY'S BUSY WORLD. TO ASSIST YOU IN THE PURCHASE OF YOUR NEXT VEHICLE, USE THIS HANDY FORM AND WE WILL CHECK YOUR CREDIT AND PRE-APPROVE YOUR AUTO LOAN. IT'S THAT EASY!

COMPLETE AND MAIL OR FAX TO:
CUTTER DODGE • 921 KAMEHAMEHA HWY. PEARL CITY 96782 • FAX 455-1416 OR...
CUTTER DODGE • 735 DILLINGHAM BLVD. HONOLULU 96817 • FAX 841-7830

All prices are after factory rebates & \$400 recent college graduate rebate + tax license. Caravans & Voyagers include a \$500 loyalty rebate for Chrysler Van trade in. *Dodge Caravan/Gold Key Plus & \$2,800 Cash from Customer, 24 mo. with GFV \$10,299.56. All factory rebates apply Dodge Dakota-24 mo. lease at \$99/mo. + customer responsible for \$1,500 cash down & drive off, tax fee & \$195 doc fee GFV \$6,612. Summit-24 mo. cash, 48 mos. \$219, GFV \$7,164.34. Subject to prior sale OAC. Sale ends 6-20-95. Pearl City Location Dodge only.

\$195 DOC FEE

CUTTER DODGE IN HONOLULU
735 Dillingham Blvd
842-6300

CUTTER DODGE IN PEARL CITY
921 Kamehameha Hwy.
455-1071

Mike McKenna's WINDWARD Mazda

LOOK WHO JOINED THE MCKENNA FAMILY!

MAZDA NOW OPEN IN KAILUA

AT 105 ONEAWA STREET

COME IN AND DRIVE A MAZDA TODAY AT MCKENNA'S

We're Out To Be #1

'95 PROTEGE

\$1000 REBATE

\$10,688**

#150017

'95 MIATA

\$1000 REBATE

\$199* mo.

- 16 valve DOHC power
- Dual air bags
- 4 wheel power brakes
- Best sports car buy in America!

'95 626

\$1000 REBATE

- Fuel injected engine - V-6 available
- Dual air bags
- Excellent value for the money
- World class sport sedan w/luxury features!

PARTS • SALES • SERVICE • RIGHT HERE IN KAILUA • 266-8000

'95 Millenia

SAVE UP TO \$30,000

'95 929

- 193 HP V-6 Power
- Dual airbags
- Multi-link 4 wheels suspension
- Best new car - best in class award winner
- Based on pre-tariff pricing

'95 PICKUP

\$500 REBATE

\$8,988*

#150029

- 5 sp. • Dual wall box
- \$36/\$50,000 Limited Warranty

'95 MPV

\$2000 REBATE

\$269* mo.

#V-6 • Air • Auto • More!

WE'RE HERE TO STAY

We've Been Serving You Over

10 YEARS

WITH QUALITY SALES & SERVICE

WE WILL BEAT ANY DEAL ON A NEW MAZDA IN HAWAII!+

Directions to Mike's from town; H1 to Pali Hwy. Pali Hwy. to Kailua Town. Left on Hamakua Dr. Go to the end of the street, turn right & you're there.

OUR BANK • YOUR BANK OR CREDIT UNION DOC FEE \$150

Mike McKenna's WINDWARD Mazda

105 ONEAWA STREET KAILUA 266-8000

A Makena Automotive Group Family Operation

ALL PRICES/PAYMENTS PLUS TAX, LIC, DOC FEES. SUBJECT TO PRIOR SALE. *\$199 MO. + TAX FOR 36 MO. LEASE THRU MAZDA AMERICAN CREDIT FOR A 5SPD. MIATA REQ \$1400 DOWNPAYMT AND \$450 ACO FEE GFV \$10244. **\$8 AFTER ALL AVAILABLE REBATES INCLUDING \$300 COLLEGE GRAD BONUS. @MPV #150005 \$269 MO + TAX FOR 36 MO LEASE THRU MAZDA AMERICAN CREDIT REQ \$3201 DOWNPAYMT AND \$450 ACO FEE GFV \$12232 OTHER RESTRICTIONS APPLY SEE DEALER FOR DETAILS. +PRICE GUARANTEE OFFER IS FOR A LIKE KIND/EQUIPMENT MAZDA IN STOCK AND AVAILABLE FOR IMMEDIATE SALE IN HAWAII. MUST PRESENT SIGNED PURCHASE INVOICE BY AUTHORIZED MANAGEMENT INDIVIDUAL. EXP. 6/22/95.

CUTTER DODGE in Waipahu

COME JOIN OUR CELEBRATIONS

Flag Day

FATHERS DAY SPECIAL 18th

FLAG DAY SPECIAL 14th

1.9% FINANCING

ALL FATHERS AND/OR ANYONE WHO BRINGS IN THEIR AMERICAN FLAG WILL RECEIVE AN ADDITIONAL \$200 OFF! *AFTER YOU NEGOTIATED YOUR BEST DEAL*

'95 NEON 4-DOOR

FUN TO DRIVE!

#D0654

Air Condition, Tilt Steering Plus More

\$9,988

'95 AVENGER

#D0580

Smoker's Group Pkg. Air-Condition "Driver & Passenger Air Bags"

\$13,588

'95 CARAVAN'S

ALL ON "SALE" FATHERS GET THE OPTIONS LOOK AT THESE REBATES

- \$1000 REBATE
- \$500 OWNERS LOYALTY
- \$400 RECENT COLLEGE GRAD
- PLUS IN-HOUSE DISCOUNTS

MILITARY/LEEWARD DISTRICT COUPON

\$2000 OFF or \$2500* Guaranteed Trade-In Value

Only Valid If Presented to Salesman Before Deal Is Negotiated. Not Valid On Sale Items. One Coupon per purchase.

GOOD CREDIT...FAIR CREDIT...BAD CREDIT

We'll Help Start You With New Credit! Take Your Car Off Island... "Military Financing"...No Hassles

*1.9% on Neons, Stratus, Intrepids Up To 24 Mos. Prices Include \$400 Recent College Grad Rebate \$500 Owners Loyalty

'85 FORD ESCORT GREAT BUY GBA334/5648 \$695	'89 HYUNDAI EXCEL GS CLASS. VERY CLEAN EW726/5647 \$895	'86 CHEVROLET NOVA AUTO, AIR WORKS, CLEAN FYU71/5661 \$1295	'88 FORD TAURUS LOW MILES, WELL KEPT FBC64/5645 \$2295	'92 GEO METRO LSI A/C, AUTO, P/S GB550/5662 \$4895
'87 DODGE "CUSTOMIZED VAN" FULL LOADED, 7 PASS PY302/5653 \$5495	'89 PONTIAC GR. PRIZ LEATHER, ABS BRAKES, PREMIUM SOUND EXR21/5628 \$6995	'91 MITSUBISHI GALANT CLASS. P/W, CHERRY EXR18/5628 \$7995	'92 BUICK CENTURY THIS CAR LOOKS NEW! GREAT COND PY765/5642 \$8995	'92 FORD RANGER XLT A/C, 6 CYL. LOADED, CUSTOM PKG! PY765/5642 \$8995
'93 NISSAN X-CAB P/U LOW MILES, CAMPER SHELL, RMS GAY929/5644 \$9895	'92 MAZDA MPV VAN 6 CYL, 7 PASS, YES, ALSO HAS REAR A/C EF366/5659 \$10,495	'94 NISSAN MAXIMA FULLY LOADED FE544/5619 \$15,595	'94 NISSAN PATHFINDER LOW MILES, 6 CYL E2P616/5637 \$16,595	'94 FORD F150 4x4 LOADED, X-CAB, XLT, LOADED 429K/5651 \$20,995

94-149 Farrington Hwy • Waipahu • 671-2626

CUTTER MITSUBISHI in Waipahu

DOWN FINANCING AVAILABLE

TEST DRIVE ANY VEHICLE AND RECEIVE A MEMBERSHIP AT GOLD'S GYM FOR "1" MONTH!

How Do I Get There?
Take The Ewa Beach Exit From H-1, Then Take The Waipahu Exit & You're A Stone's Throw Away!

'95 GALANT \$12,988

#7185

AIR-CONDITION
AM/FM CASSETTE
FLOOR MATS

'95 ECLIPSE RS \$13,988

#7130

AIR-CONDITION
AM/FM CASSETTE W/6 SPKRS
REAR CARGO COVER

'95 DIAMANTES

"GET THIS LUXURY CAR BEFORE ANY SANCTIONS"

LOADED LEATHER & DOOR BEAUTY

#7067

*This price is based on an additional \$500 rebate if financed through Mitsubishi Motors.

94-149 Farrington Hwy • Waipahu • 671-2626

\$195 DOC FEE