

HAWAII MARINE



Taking the time to talk with "his" Marines was a major goal for the Commandant during his visit here.

CMC reactivates HMM-364 during visit to Hawaii

The Commandant of the Marine Corps, Gen. P.X. Kelley, visited the Air Station, Oct. 12, and participated in a wide-range of troop-oriented activities.

Accompanied by the Sergeant Major of the Marine Corps, Robert E. Cleary, the Commandant discussed current Marine Corps issues in sessions with junior enlisted NCOs, staff NCOs and officers.

The Commandant also reactivated HMM-364 when he

presented the unit's colors to LtCol. T.W. Holden, the squadron's CO.

Commodore J.S. Cassells, medical officer of the Marine Corps, also accompanied the Commandant. Cassells talked with Brigade medical officers and corpsmen, and was the reviewing officer for the Navy Day Parade held at Dewey Square last Friday.

The traditional Navy cake-cutting ceremony ended with Cassells presenting the first piece of cake to the oldest and

youngest sailors, here, Master Chief Furman R. Watt and Fireman Apprentice Bobbi D. Davis.

Additionally, Mrs. P.X. Kelley, Mrs. C.G. Cooper, Mrs. O.K. Steele, and Mrs. C.D. Robinson attended a presentation by the Family Service Center at Kansas Tower.

Representatives of Navy Relief, Red Cross and FSC's Outreach presented their programs in relation to the unique aspects of duty in Hawaii, such as isolation, high

cost of living and cultural problems.

HMM-364

by Sgt. Christopher Wood

The Commandant of the Marine Corps, Gen. P.X. Kelley, officially reactivated Marine Medium Helicopter Squadron 364 during his visit here, Oct. 12, when he presented the unit's colors to

Cont. on Page A-3



SSgt. R.A. Olan photo

LtCol. T.W. Holden receives HMM-364's colors from Gen. P.X. Kelley, Commandant of the Marine Corps, during a reactivation ceremony here. See story on Page A-3.

CFC contributions continue to grow

The fourth week of the Honolulu Area Combined Federal Campaign ended with approximately \$128,000 donated by Hawaii Marines.

This year donors may specify any human health and welfare charity as benefactor, or contribute to the general CFC fund. The annual fund drive ends Nov. 1.

Although no official monetary goals were set for this year's drive, most units are striving to contact 100 percent of its members. The chart shows the percentage for the number of people contacted, not the number who have contributed.

Unit	Percent Contacted	Amount
Camp Smith	83.4	\$18,756
Marine Barracks	90.6	\$8,451
MCAS Kaneohe Bay	52.9	\$29,579
1stRadBn	91	\$10,106
BSSG	100	\$8,418
CommSptCo	99	\$1,870
HqCoBde	22.2	\$1,662
MAG-24	100	\$31,036
3d Marines	25.4	\$18,503

For more information on the CFC drive, call 1stLt. Edwards, Camp Smith, at 477-6331; CWO-3 Johnson Jr., Marine Barracks Hawaii, at 474-9242; Maj. Warlick, MCAS, at 257-3500; and Maj. Diviney, 1st Marine Brigade, at 257-2528.



FLIP THE SWITCH ON

ENERGY WASTE!

"All Stop-Energy Waste" is the theme for the 7th Annual Department of the Navy Energy Awareness Week, Oct. 22-28.

Energy Awareness Week 1984 is an event in which military personnel, civilian employees and the Navy/Marine community can

participate.

Although the Navy and Marine Corps energy management programs have improved, according to a recent message from the Secretary of the Navy, more achievements in energy savings can be realized through individual efforts.

Through awareness and education, energy efficiency can remain a high priority item for military and civilian personnel, providing low cost opportunities for saving energy.

The Air Station will observe Energy Awareness Week with an Energy Saving display by

Hawaiian Electric Company at the Main Exchange Oct. 23 and a poster contest by the Mokapu School students.

For more information on energy awareness call Mr. Bill Buck at 257-3319.

Civilian-Military Fun Day slated

A Civilian-Military Fun Day is being held Sunday at the Kailua Recreation Center from 10 a.m. to 4 p.m., and everyone is invited to attend. There is no charge for admission.

The event, planned to create better understanding between the civilian and military communities, will feature team competition on a modified obstacle course; Hawaiian, rock and country and western music; a martial arts demonstration; a bikini contest; and refreshments.

Teams competing on the obstacle course will consist of three civilians and three military persons. Some teams still need military members, and you can compete by calling Bill Buck at 257-3319. Prizes will be awarded to each participant.

Bus transportation will be available from the Main Exchange to the Kailua Rec Center every hour on the hour from 8 a.m. to 4 p.m.

Schedule of events

10 a.m. — Opening ceremony
10:30 a.m. — Field events
10:30 to 11 a.m. — Ken Snyder

11 to 11:30 a.m. — Martial arts demonstration
11 to 11:45 a.m. — Hawaiian Music - Ka'eo
Noon to 12:45 — Rock music - Red to White
1 to 1:45 p.m. — Western music - J.L. Country Band
2 to 2:30 p.m. — Bikini contest
2:30 to 3 p.m. — Awards
3 to 3:45 p.m. — Hawaiian music - Kamalamalama

The Rec Center is located on Kainalu Rd., between Kailua Intermediate School and the Fire Station on Kuulei Road. When exiting the Air Station through the Mokapu Gate, turn left at North Kalaheo, and proceed down Kalaheo to the first light at Kuulei Rd. and turn right on Kuulei. Turn left onto Kainalu Street at the first light.

If exiting the Air Station through the H-3 Gate, turn onto Kaneohe Bay Drive, towards Kailua, and proceed through the Mokapu Boulevard/Kaneohe Bay Drive intersection. Continue down Kalaheo and follow the same directions from the Mokapu Gate. Parking should be available in the Rec Center parking lots.

For more information call Bill Buck at 257-3319.

What's inside

MCCRES Tests

'B' 1/12 A-4
HMH-262 B-1

Pay raise chart A-7

Comm SptCo
at work A-14

- and play A-13

Youth football
on the
move B-7

Weekly items

At a glance A-8
Salutes A-11
Education A-12
Island Happenings B-3

Stability was the subject

Upcoming mission changes was one of the topics discussed by BGen. O.K. Steele, Commanding General, 1st Marine Brigade, who was the guest speaker for the OWC luncheon held at Kaneohe Bay Yacht Club.

"Next month, BLT 2/3, MSSG-31 and HMH-262 will embark on a 5½-month deployment, which will mark the last cycle in a five-year operational commitment of the 31st Marine Amphibious Unit. This change is dictated by operational commitments," said the general. Starting next March, units for the MAU will be furnished by installations located in southern California. The change will also improve the quality of family life for brigade Marines by drastically reducing deployed time.

"We have been furnishing these forces based on the strength of three battalions," said the general. That was the reason for the quick turn-around time. Units from southern California will be able to do the same mission, but they will have four battalions and more squadrons, so their turn-around time will be longer. They'll be going out for 5½ months and have at least 12-14 months back home," said BGen. Steele.

"We are trying to build more stability in families at home as well as the stability in units," said the CO. "Units who have trained together work better together."

The general also discussed trends he's noticed in the Marine Corps. According to BGen. Steele, the officers corps has never been more solid than what it is today. "It's no accident that four cabinet members in this administration are former Marines," said the general.

The enlisted ranks have made the most dramatic changes the last few years, according to the general. "For example, 10 years ago the drug problem affected 50-55 percent of the enlisted and only 50 percent of the enlisted were high school graduates."

Today, 95 percent of the enlisted personnel are high school graduates; drug use, as indicated by urinalysis tests, is approximately 4-5 percent. Of 9,000 Marines on Station, only 14 are UA or deserters. "The good guys are winning out," said the general.

Another trend noted was the increase in married Marines. "This is a blessing in that it produces more stable Marines. Once Marines get married they seem to settle down," said the general.

"Some of the challenges of marriage, such as meeting commitments, being torn between family and Marine Corps, come about because the spouse often doesn't understand deployment separations. Challenges are especially prominent here in Hawaii with the high cost of living, a different culture and a

sense of isolation," the general commented.

General Steele encouraged the women to take the lead in stabilizing family affairs. "I don't want to sound like an alarmist, because I'm not. I'm probably more optimistic about the status of our defense posture and foreign relations than I've been in years,"

BGen. Steele said. "But we must understand that we are part of the operating forces and are frequently instruments when there's a crisis in the world."

In closing, the general urged the wives to be good listeners, establish solid relationships long before a deployment, exchange ideas and get involved with activities while husbands are away.

OOOPS!!

Right info, wrong place

In an article published in the Hawaii Marine last week, it was reported that Trans World Airlines joined more than a dozen airlines in offering a 50 percent leave discount fare to all military family members.

Although the information is correct, none of the airlines offer the discount to or from Hawaii.

Of the 13 airlines listed, only four service Hawaii: Northwest Airlines, Pan American World Airways, United Airlines and World Airways. Delta Air Lines begins Hawaiian service in mid-December.

According to Scheduled Airlines Ticket Office officials here, one airline does offer a discount to military family

members, but it isn't in conjunction with the family member leave fare. World Airways offers discounts of about 50 percent.

Even though the family member leave fare isn't available in Hawaii, the program helps cut the cost of travel on the mainland. The airlines offering the family 50 percent discount are: Delta Air Lines, Eastern Airlines, Empire Airlines, Frontier Airlines, Northwest Airlines, Ozark Air Lines, Pan American World Airways, Piedmont Aviation, Republic Airlines, Trans World Airlines, United Airlines, USAir and World Airways.

For more information on travel arrangements and fares, call SATO at 254-1564.

SOMS Marines help - you can too!

There is an old saying that Marines take care of their own, and Sgt. Tony Oliva, of SOMS, probably couldn't agree more. Oliva's 6-year-old son, Matthew, is a cancer victim undergoing chemotherapy treatments at Tripler's Pediatric Clinic. His prognosis is unknown.

The Marines at SOMS, aware of the mounting bills the Oliva's were incurring, decided to "take care of one of their own" and have been collecting donations to help defray the added expenses.

In addition, an account in Matthew Oliva's name has been opened at the Bank of Hawaii on the Air Station so anyone who wishes may contribute to the fund.

To the SOMS' Marines, it's a matter of taking care of one of their own in the Marine Corps tradition.

Pali Palms
DENTAL GROUP
FAMILY
DENTISTRY
OPEN
SATURDAYS
AND
EVENINGS

Moms, Dads, keikis, tutu wahines... everybody loves Pali Palms Dental Group! Special kids play area stocked with zoo of furry animals. Most modern office in Windward. Tender loving dental care!

- All areas of family dentistry
- Really reasonable fees
- Immediate appointments
- Open daily, nights and Saturdays

We Welcome all Insurance:

■ DSSH ■ HMSA ■ DDS-82

■ Dentaguard ■ HDS ■ All others

Pali Palms Plaza
Next to Yum Yum Tree
970 N. Kalaheo Ave. - 1st Floor
Across from Alkahi Shp. Bldg.

Phone
254-1541

Windward Enlisted Club presents A FLOCK OF SEAGULLS

Doors Open At 7:00 P.M.

Friday 16 Nov. '84
Show 10:00 P.M.

\$10.00
All Ranks



The Hawaii Marine is an unofficial newspaper published every Thursday by RFD Publications, Inc., 48-016 Alaloa St., Kaneohe, Hawaii 96744, in the interest of the U.S. Marine Corps personnel in Hawaii. All advertising is handled by the publisher, RFD Publications, Inc., telephone 236-6881. Circulation is 8,000.

All news content is prepared by the Joint Public Affairs Office, Marine Corps Air Station, Kaneohe Bay, Hawaii 96744, telephone 257-2178. Articles for publication must be submitted no later than noon Thursday for the following week's publication. The Hawaii Marine solicits articles and photographs from all Marine Corps organizations; however, it reserves the right to edit or rewrite

material submitted.

Everything advertised in this publication must be made available for purchase, use or patronage without regard to race, creed, color, national origin, age or sex of the purchaser, user or patron. A confirmed violation or rejection of this policy of equal opportunities by an advertiser will result in the refusal to print advertising from that source.

San Press carriers delivering the Hawaii Marine may request a voluntary monthly contribution of \$1 from residents of government housing at the Air Station; however, the contribution is strictly voluntary and residents will receive the Hawaii Marine whether they voluntarily contribute or not.



Gen. P.X. Kelley, Commandant of the Marine Corps, troops the line during reactivation ceremonies for HMM-364. Accompanying the commandant are BGen. O.K. Steele, commanding general, 1st Marine Brigade, and LtCol. T.W. Holden, the squadron's CO.



The Sergeant Major of the Marine Corps, Robert E. Cleary (c), is greeted by Station SgtMaj. W.F. Trawick, Brigade SgtMaj. J. McGuirk, and FMFPac SgtMaj. Lee M. Bradley.



Commodore J.S. Cassells, Medical Officer of the Marine Corps, accepts the first piece of Navy Birthday cake from Capt. Herbert Stanton. Cassells reviewed the Navy Day Parade here Friday.

Commandant visits

Cont. from Page A-1

LtCol. T.W. Holden, the squadron's commanding officer.

HMM-364's reactivation was directed by Headquarters Marine Corps to enhance the rotational capability of Marine Aircraft Group-24, which now has four medium

helicopter squadrons instead of three.

The squadron will be comprised of CH-46 Sea Knight helicopters and supported by approximately 156 enlisted personnel, 29 naval aviators, and 3 ground officers. Most personnel are being transferred to 364 from other MAG-24 units, except for

some pilots who are coming from East and West Coast commands.

After it was first activated in 1961, HMM-364 served at MCAS Santa Ana, Calif.; MCAS(H) Futenma, Okinawa, Japan; and in the Republic of Vietnam. It left Vietnam in 1971, and was deactivated at Santa Ana.



Gen. P.X. Kelley, accompanied by LtGen. C.G. Cooper, is greeted by BGen. O.K. Steele, Brigade commanding general, and Col. C.D. Robinson, Air Station commanding officer, upon his arrival here Oct. 12.

ASK ABOUT OUR \$3900 FAMILY EYE EXAMINATION PLAN!

SOFT CONTACT LENSES From **\$79**
EXTENDED WEAR LENSES From **\$129**
PRESCRIPTION GLASSES From **\$49**

All Contact Lens Fees include Lenses, Care Kit, Follow-up Care and 90 DAY TRIAL PERIOD.

COMPLETE PROFESSIONAL VISION SERVICES
DEDICATED TO QUALITY AND SERVICE IN VISION CARE

Dr. Charles Dean
Optometrist

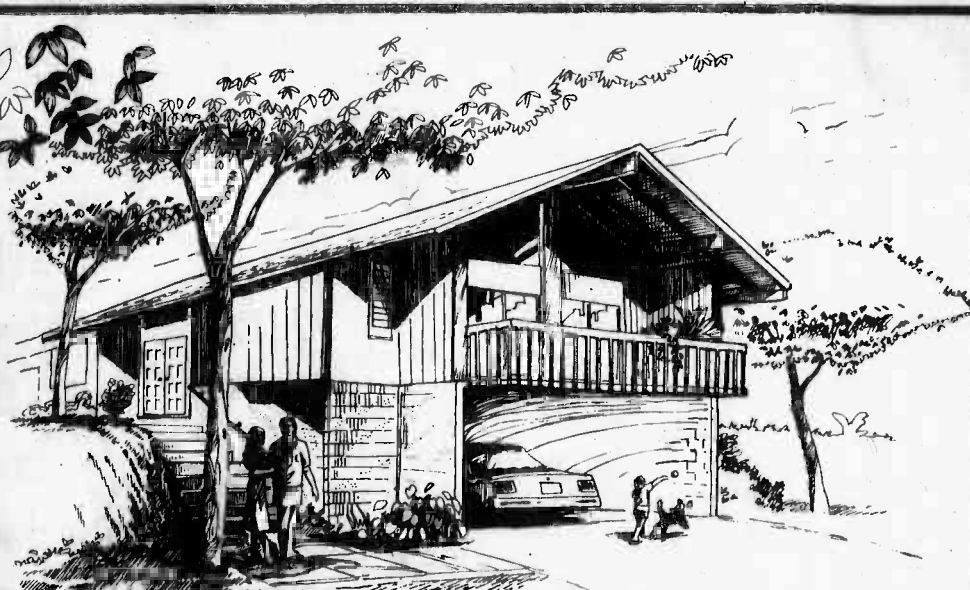
KAILUA
139 Hekuli St
261-9735



Raise home entertainment to a new level of satisfaction

Add impact with a new TV/FM/AM Stereo Receiver from Technics. They deliver a spacious stereo effect that can make ordinary TV sound extraordinary with one simple connection. And, of course, these advanced receivers are all born ready for digital audio, VCR, video disc, cable TV and cable FM hook up. The Computer Drive New Class A Receiver is the ideal Amp circuit for demanding digital sources like the Compact Disc.

Technics
The science of sound



YOUR HOME AND OUR LONG-TERM, FIXED-RATE LOANS ADD UP TO LOW PAYMENTS.

Interest rates are on the rise again, and people with variable-rate loans are beginning to hear the bad news. The good news comes from Finance Factors: a home equity loan you can depend on not to catch you by surprise with interest rate increases and big balloon payments. Get the money you need today, and a loan you can live with tomorrow. Stop by any of our 22 convenient locations.

- Long Terms
- Fixed Rates
- No Balloon Payments
- No Pre-Payment Penalty
- Flexible Plans
- Fast Service
- Low Rates
- No Points

Finance Factors

Member FDIC



A FINANCIAL INSTITUTION YOU CAN DEPEND ON



A "grunt" unit needs their support, and another round is packed into the Howitzer for its arching flight to its target while the gunner makes his final adjustment.

Fire mission!!

Bravo leaves its mark

by Cpl. Pat Lewandowski

"Following a limited nuclear strike, a division of enemy airborne and naval infantry seized the Pearl Harbor/Hickam Air Force Base complex. After a heavy counterattack by friendly forces, the enemy conducted an amphibious withdrawal by hovercraft to Waianae.

"The enemy, backed into the Waianae Range, was waiting for reinforcements. Offensive operations have been limited to small patrols in the foothills. The only effective way to inflict casualties on them is to shower the area with artillery fire."

Battery B, 1st Battalion, 12th Marines answered the call for supporting fire as they demonstrated their ability to shoot, move and communicate — the primary mission of a Marine artillery unit.

The battery used this exercise to evaluate their combat effectiveness during a Marine Corps Combat Readiness Evaluation Systems test conducted late last month. The cannoneers of "B" Btry practiced nearly every type of fire mission and evasive maneuver, including a night displacement and battery airlift.

According to MSgt. Gerald Harvey, Headquarters Battery, 1/12, the MCCRES tested the ability of the battery to accomplish mission performance standards established by Headquarters Marine Corps. Each mission was designed to test the flexibility and speed of the battery. Although a MCCRES was already completed during a

recent combined arms exercise, the Marines were enthusiastic about another one.

"This evaluation was a little different from most," said Harvey. "Not only is this the second test for the battery, but it is also the last time a 1/12 unit will deploy taking the 105mm Howitzer. We came out here to evaluate the battery's combat readiness. From what we have seen, this is one of the best units we will send afloat," Harvey continued.

The Marines of "Bravo" Btry started firing by registering their weapons on the target area. As the big guns roared, a call came from the Fire Direction Center to move the guns to another position because enemy fire was expected.

The gun crews immediately took down the camouflage nets covering the guns and vehicles, ammunition was loaded onto 5-ton trucks, and the guns were readied for transport and hooked up.

The new position had been surveyed prior to offensive operations and was in range of the primary target. Before using the site, the team checked for mines, traps and enemy activity.

Within minutes of their arrival there, the base gun was set and a fire suppression mission was called. Shortly afterwards, all guns were in position and hurling well-placed rounds at the enemy.

As night fell, the "cannon cockers" breathed a little easier; the enemy had been beaten back for a moment. They tended to their guns,

Cont. on Page A-5



Fine tuning his 105mm Howitzer, PFC James Wells boresights the piece with an elbow telescope to ensure the consistently accurate delivery of rounds on target.



Their position possibly compromised, cannoneers from "B" Btry, 1/12 hurriedly assemble their gun before moving to a safer alternate position.



The deft hands of LCpl. Wayne Fender and PFC Jesus Martinez place timed fuses on 105mm rounds prior to their delivery.



Battery Marines pack up to move to a safer position and more missions.

Bravo...

Cont. from Page A-4

placed fuses on rounds and ate a quick meal.

After an illumination mission was conducted for friendly troops, the battery prepared for another move. This one proved to be more difficult as they maintained light and sound discipline in an effort to conceal themselves from the enemy and deadly counter-battery fire. They reached a new position and quickly answered another call for artillery support.

While the sun was making its first appearance of the day, the Marines were already hard at work, surveying other possible positions and planning another move.

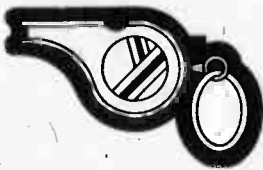
During the move, an order was issued to shoot as soon as possible. The maneuver consisted of moving to an unknown area, setting the guns up by using a known point, and immediately shooting rounds toward the enemy. Accuracy, as well as timing, was evaluated during and after the move.

The battery then regrouped for what was to be their final test — a helicopter airlift of men and equipment. Three guns were lifted internally by three CH-53 Sea Stallions from Marine Heavy Helicopter Squadron 463, which had no problem lifting the men and their guns to a simulated ship offshore.

"Although the battery was evaluated during the CAX last month, it operated with an infantry element and was limited," said Maj. Rocky Chavez, operations officer for

1/12. "Having our own MCCRES gave us a chance to closely monitor the action without interfering with someone else's game plan. "We gave the battery its own problems and scenario," Chavez continued. "They executed the plans well, and maintained a fighting organization despite numerous attacks and constructive problems. Battery B proved that they could successfully shoot, move and communicate under combat conditions."

LET'S BLOW THE WHISTLE ON ENERGY WASTE



GENERAL ELECTRIC COMPANY
Factory Service

WE OFFER THESE SERVICES

- Scheduled Service Mon.-Sat./
- Emergency Service
- Service Contracts
- Step-by-Step Repair
- Manuals/Parts
- Factory Trained Technicians
- Refrigerator/Freezer
- Washer/Dryer
- Range/Microwave
- Dishwasher/Disposal
- Compactor
- T.V.
- Room Air Conditioner

Service
Emergency
Parts

533-7462
533-7462
538-1141

Chris

404 Cooke St.

Now's your chance

Marines. Every year around this time, a festive spirit descends upon us as we all go into full swing preparing for our annual celebration — the birthday ball in honor of our Corps' beginning.

I vividly recall my days as a young Marine — hoping that my sergeant major would bestow upon me the honor of asking for my participation in the numerous ceremonies which take place every year.

I cannot recall a birthday ball in which the heritage of our Corps failed to swell my chest with pride as the birthday cake was paraded between Marines with drawn swords. I am not ashamed to admit that a few tears even fell down my cheeks.

Once again, it is time to make those last minute

preparations and it is my pleasure to screen volunteers to participate in the enlisted birthday ball ceremony.

I know there are many sergeants, corporals, lance corporals, PFCs, and some privates, on this Station who have Dress Blues. It is these Marines whose support I need.

If you would like this celebration to be a special one for you, I can think of no better way than to be a front row spectator and participant during this year's events.

Please feel free to call me at 257-3443 anytime to volunteer for this honor, or stop me wherever you see me.

"Semper Paratus"
SgtMaj. W. Trawick
MCAS Sergeant Major



We Save You More Than Time

ALL SPECIALS EFFECTIVE NOW
THRU OCTOBER 21, 1984
All items plus tax, while supply lasts.

VALUABLE COUPON

Limit 1 case per customer

ICE COLD CASE SODA Reg. 8.99

24, 12 oz. cans

639

With Coupon

Limit 1 Coupon Per Customer

Coupon Expires October 21, 1984

- Pepsi
- Diet Pepsi
- Pepsi Free
- Diet Pepsi Free
- Pepsi Light
- Mountain Dew

NEW! STROH'S BEER Reg. & Light

12/12 oz. Cans

559

EVERYDAY LOW PRICE

Carton

NEW

699

carton

NEW! ★ SUPER ★ BIG GULP

44 fl. ounces All flavors

79¢

2 LITER SODA

Regular or Diet 7-Up

179 each

FRESH ISLAND EGGS

Rocky Road Grade A

Extra Large

149 Dozen

EVERYDAY LOW PRICE

LOVE'S KING WHITE BREAD

1 lb.

85¢

EVERYDAY LOW PRICE

NEW LOCATION!

KAM HWY

7-11

OLD LOCATION

PET MEDICAL CLINIC

NEW CAMELOT FLOWERS

NOW AT 45-1123 KAM HWY.
247-5677

BOUQUETS ★ LEIS ★ BALLOONS ★ WORLDWIDE DELIVERY



Camelot Flowers

MICHAEL JACKSON CONCERT ★ CONTEST ★

Information available at your favorite neighborhood 7-ELEVEN food store.

OPEN 24 HOURS EVERYDAY!

Competitive Prices on Gasoline 24 Hours Everyday
at Selected 7-Eleven Stores

All items plus tax, while supply lasts.

FREEDOM



BENSON & HEDGES

Lights



The Deluxe 100.

Discover just how rich a light cigarette can be.
Regular and Menthol.

10 mg "tar," 0.7 mg nicotine av. per cigarette, FTC Report Mar. '84.

Warning: The Surgeon General Has Determined
That Cigarette Smoking Is Dangerous to Your Health.

A breakdown of the Jan 1 pay raise

Pay grade	Under										Commissioned officers									
	2	2	3	4	6	8	10	12	14	16	18	20	22	26	28	30	32	34	36	38
O-10	5089.40	5247.90	5247.90	5247.90	5247.90	5247.90	5449.20	5533.20	5533.20	5533.20	5533.20	5533.20	5533.20	5533.20	5533.20	5533.20	5533.20	5533.20	5533.20	5533.20
O-9	4483.10	4610.70	4708.80	4708.80	4708.80	4708.80	4828.50	5029.50	5029.50	5029.50	5029.50	5029.50	5029.50	5029.50	5029.50	5029.50	5029.50	5029.50	5029.50	5029.50
O-8	4069.50	4191.30	4290.90	4290.90	4290.90	4290.90	4410.70	4610.70	4610.70	4610.70	4610.70	4610.70	4610.70	4610.70	4610.70	4610.70	4610.70	4610.70	4610.70	4610.70
O-7	3381.60	3611.40	3611.40	3611.40	3611.40	3611.40	3773.10	3992.10	3992.10	3992.10	3992.10	3992.10	3992.10	3992.10	3992.10	3992.10	3992.10	3992.10	3992.10	3992.10
O-6	2506.20	2753.70	2934.00	2934.00	2934.00	2934.00	2934.00	2934.00	2934.00	2934.00	2934.00	2934.00	2934.00	2934.00	2934.00	2934.00	2934.00	2934.00	2934.00	2934.00
O-5	2004.60	2354.10	2516.40	2516.40	2516.40	2516.40	2516.40	2516.40	2516.40	2516.40	2516.40	2516.40	2516.40	2516.40	2516.40	2516.40	2516.40	2516.40	2516.40	2516.40
O-4	1689.60	2057.40	2194.80	2194.80	2194.80	2194.80	2235.30	2334.30	2334.30	2334.30	2334.30	2334.30	2334.30	2334.30	2334.30	2334.30	2334.30	2334.30	2334.30	2334.30
O-3	1570.20	1755.30	1876.50	2076.30	2175.60	2254.20	2375.70	2493.30	2554.80	2554.80	2554.80	2554.80	2554.80	2554.80	2554.80	2554.80	2554.80	2554.80	2554.80	2554.80
O-2	1389.20	1495.20	1796.10	1856.70	1895.70	1895.70	1895.70	1895.70	1895.70	1895.70	1895.70	1895.70	1895.70	1895.70	1895.70	1895.70	1895.70	1895.70	1895.70	1895.70
O-1	1188.60	1237.50	1495.20	1495.20	1495.20	1495.20	1495.20	1495.20	1495.20	1495.20	1495.20	1495.20	1495.20	1495.20	1495.20	1495.20	1495.20	1495.20	1495.20	1495.20

Monthly Basic Allowance for Subsistence		
Officers (including commissioned officers, warrants and aviation cadets.)	\$106.18	
Enlisted		
When rations in kind are not available	\$5.29	\$5.72
When leave or granted permission to mess separately		4.68
When assigned under emergency conditions where no government messing is available		7.00

Commissioned officers with more than 4 years active duty as enlisted or warrant officer

O-1E	2076.30	2175.60	2254.20	2375.70	2493.30	2592.90	2592.90	2592.90	2592.90	2592.90	2592.90	2592.90	2592.90	2592.90
O-2E	1856.70	1895.70	1955.70	2057.40	2136.00	2194.80	2194.80	2194.80	2194.80	2194.80	2194.80	2194.80	2194.80	2194.80
O-3E	1495.20	1597.20	1656.00	1716.00	1775.70	1856.70	1856.70	1856.70	1856.70	1856.70	1856.70	1856.70	1856.70	1856.70

Warrant officers

W-4	1599.60	1716.00	1716.00	1755.30	1835.10	1916.10	1996.50	2136.00	2235.30	2313.90	2375.70	2452.50	2534.70	2732.10
W-3	1453.80	1577.10	1577.10	1597.20	1616.10	1734.30	1835.10	1895.70	2014.20	2076.30	2076.30	2157.00	2235.30	2313.90
W-2	1273.50	1377.60	1377.60	1417.80	1495.20	1577.10	1636.80	1696.80	1755.30	1816.80	1876.50	1935.90	2014.20	2014.20
W-1	1061.10	1216.50	1216.50	1317.90	1377.60	1436.70	1495.20	1557.30	1616.10	1675.80	1734.30	1796.10	1796.10	1796.10

Enlisted members

E-9	1860.60	1902.90	1945.80	1990.50	2034.90	2074.50	2183.70	2395.80						
E-8	1605.00	1647.00	1690.20	1734.60	1774.80	1818.30	1928.10	2139.90						
E-7	1390.20	1433.40	1486.20	1540.80	1584.00	1634.70	1744.40	1925.10						
E-6	1236.60	1300.20	1341.00	1384.20	1405.20	1405.20	1405.20	1405.20						
E-5	1129.80	1171.20	1192.80	1192.80	1192.80	1192.80	1192.80	1192.80						
E-4	960.90	960.90	960.90	960.90	960.90	960.90	960.90	960.90						
E-3	824.70	824.70	824.70	824.70	824.70	824.70	824.70	824.70						
E-2	695.40	695.40	695.40	695.40	695.40	695.40	695.40	695.40						
E-1	620.40	620.40	620.40	620.40	620.40	620.40	620.40	620.40						

Monthly Basic Allowance for Quarters

Pay grade	Without		With	Pay grade	Without		With
	Full	Partial			Full	Partial	
O-10	\$537.30	\$50.70	\$660.90	W-2	297.00	15.90	379.50
O-9	537.30	50.70	660.90	W-1	251.40	13.80	220.90
O-8	537.30	50.70	660.90	E-9	315.30	18.60	429.90
O-7	537.30	50.70	660.90	E-8	292.20	15.30	400.50
O-6	493.20	39.60	599.40	E-7	249.30	12.00	372.60
O-5	465.30	33.00	552.30	E-6	221.40	9.00	337.80
O-4	428.60	28.70	504.90	E-5	204.90	8.70	300.30
O-3	345.30	22.20	420.90	E-4	177.60	8.10	259.50
O-2	278.10	17.70	360.90	E-3	172.50	7.80	238.50
O-1	238.50	13.20	323.70	E-2	146.40	7.20	238.50
W-4	391.20	25.20	453.90	E-1	133.50	6.90	238.50
W-3	330.30	20.70	405.90	E-1*	122.70	6.90	213.60

*Less than four months of service.

HARRY'S cafe & deli

SUN LOVERS, SAILORS AND BEACH GOERS:

Fill Your Coolers and Picnic Baskets with Good, Wholesome Foods From HARRY'S. Over 30 "Hand-Built" Sandwiches, Burgers, and Subs to Choose From; Plus Salads, Soups and The Finest Home-Baked Cheesecakes This Side of the Pali!

LET HARRY'S PACK THE LUNCH for Your Day in the Sun!

Open 10:00 A.M.-8:00 P.M. Daily
Closed Mondays

Aikahi Shopping Center
Next to Firestone

SEWING MACHINE SALE

A 40-foot container has arrived at our warehouse. Over 400 machines will be sold at PRACTICALLY WHOLESALE COST!

BERNINA • VIKING • RICCAR SINGER • PFAFF

4 DAYS ONLY

•ZIG ZAG
•BUTTONHOLE
•MONOGRAM
•OPEN ARM
•FULLY GUARANTEED

•STRETCH STITCHES
•BLIND-HEM
•TWIN NEEDLE

SALE ENDS SUN. 10/21/84 p.m.

FREE Machine Instruction w/Purchase

\$169

SUG. RETAIL **399**

PACIFIC SURPLUS DISTRIBUTORS LTD.

262-8131 MON-FRI 9:30-6:00 p.m. 455-9010
1247-F KAILUA RD. SATURDAY 9:30-5:00 p.m. 98-593 KAM HWY
KAILUA SUNDAY 11:00-5:00 p.m. PEARL CITY
THURSDAY CLOSED

BANQUETS & PRIVATE PARTIES... DONE YOUR WAY!

The Hale Koa Hotel has just made planning your next special function a "piece of cake!"

We've recently completed our new banquet and private party guide that has every detail you'll need to arrange your party including over 100 menu items to choose from! You'll love the prices, and they're guaranteed from now through August, 1985.

Call Catering Manager Cheryl Aho or one of her staff and ask them about the hotel's available dates. And be sure they send you very own copy of our beautiful new booklet. Then, plan your next function your way!

Phone 955-0555

HALE KOA HOTEL
2055 Kalia Road ♦ Waikiki
Honolulu, Hawaii 96815-1998

Palehua Heights III

The Vanda model, featured above, is the perfect first home. With the quality of the larger homes in Palehua Heights, the Vanda is designed to expand as your needs grow. The basic home has three bedrooms, 1 1/2 baths and 1,272 square feet of comfortable family living space. Later you can add a family room to give an extra 240 square feet. Or a family room and master bedroom to increase the size of your home to 1,824 square feet.

LOOK AT THESE FEATURES!

- Fee-Simple
- Two car garage with storage space
- Wall-to-wall carpeting
- All-electric kitchen
- Tiled entryway
- Priced from \$141,800

VANDA MODEL V 3 bedrooms, 1 1/2 bath

Floor Area	1,272 sq. ft.	
Garage & Storage	430 sq. ft.	\$141,800
Option 1 Lanai	300 sq. ft.	\$6,500
Option 2 Family Room	240 sq. ft.	\$12,000
Option 3 Family Room Master Bedroom	240 sq. ft. 312 sq. ft.	\$29,400

PALEHUA NANI

LOOK AT THESE FEATURES!

- Fee-Simple
- Priced from \$99,400
- Private entry
- Resident Manager
- Fully landscaped
- Wall-to-wall carpeting
- All-electric kitchens
- Spacious lanais
- Fence-enclosed yards
- Aluminum window frames
- Insect screens on all windows and sliding doors
- Double wall wood frame construction

Model Bedroom/ Bath Sq. Feet Price Range

A	3/2	1248	\$122,300-\$124,800
A-1	3/2	1242	\$120,800-\$123,000
B & D	2/2	912	\$99,400-\$103,300
C	2/2	1062	\$114,000

PALEHUA VILLAS

LOOK AT THESE FEATURES!

- Fee-Simple
- Panoramic views
- Landscaped gardens
- Priced from \$78,700
- Wall-to-wall carpeting
- All electric kitchens
- Pass-thru counter
- Stainless steel sink
- Range oven
- Cultured marble bath counter tops
- Stacking washer/dryer
- Garbage disposal
- Smoke detector
- Concrete finish for all floors
- CMU hollow tile block party walls
- Gypsum board interior partitions
- Hardboard siding exteriors
- Sliding windows with anodized aluminum frames
- Insect screens on all windows

Model Bedroom/ Bath Sq. Ft. Price Range

A	2/1	743	\$ 78,700-\$ 84,700
B	2/1 1/2	794	\$ 85,600-\$ 93,800
C	2/1 1/2 + Den	887	\$ 97,200-\$104,200
D	3/2	912	\$104,600-\$110,600

Drawings and renderings are not to scale and are subject to change.

Construction begins this fall for occupancy next summer (1985). Scale models are on display at the Makakilo Sales Office.

Finance Realty

Makakilo Sales Office open daily, 10 a.m. to 5 p.m.
Telephone 672-3555/672-3531
Courtesy to Brokers (Broker must accompany client.)

FHA, VA, Kula Mae and Conventional Financing Available

Makakilo is 20 miles from downtown Honolulu, 15.2 miles from Pearl Harbor and 2 miles from Campbell Industrial Park. Commute via freeway or bus.

At a glance

MSG screening

The Marine Security Guard Battalion Information/Screening Team will be at the Air Station Theater Oct. 22-23 at 10:15 a.m.

The team will provide briefings, screening of Marines on orders to Marine Security Guard duty, and conduct interviews of all potential volunteers. Interested personnel from Camp H.M. Smith, Marine Barracks Hawaii, and the Air Station should contact their unit career planner for more information.

SNCO ball

This year's Staff NCO Birthday Ball, held in observance of the Corps' 209th birthday, will be at the Ilikai Hotel, Honolulu, on Nov. 24. Guest of Honor will be the Commanding General for

FMFPac, LtGen. Charles G. Cooper, and all active duty or retired Staff NCOs and their guests are invited.

Tickets are \$21 per person, and 1stSgt. W.J. Haire is in charge of seating (he can be reached at 257-3661/3237). Dress will be Summer Service "A" or Dress Blue "A" or "B" for active duty personnel, black tie for civilians and formal attire for the ladies.

Hotel rooms will be available for those who wish to reserve them. There are 100 available at \$49 for a single and \$63 for a double. Advance room reservations and ball tickets may be obtained by contacting the sergeant major or first sergeant of your unit.

Bonus extended

The temporary suspension of the SRB program on Oct. 1 has prompted HQMC officials to extend the date the revised multiples will take effect.

Some Marines may not have been able to reenlist because of the suspension; and to preclude any possible injustices, the present SRB multiple list is extended to Oct. 23.

Toys for Tots

Marines from 4th Force Reconnaissance Company in Honolulu have started this year's Toys for Tots drive to collect thousands of toys to

bring a happier Christmas to underprivileged children in Hawaii.

Individuals wanting to donate toys or gifts should contact HN2 Bob Easton from 7 a.m. to 4 p.m., Monday through Friday, at 471-0220.

Professional women

A business meeting for women officers to form a Hawaii Area Professional Association is scheduled from 11 a.m. to 1 p.m. tomorrow at the Pearl Harbor Officers Club.

Those interested in attending should contact Lt. Jan Hamby at 471-3084, Lt. Cathy

Morgan at 471-9029 or Ensign Sheila Scarborough at 471-9576.

NCO promotions clarified

HQMC - Numerous requests for remedial promo-

tion have prompted Manpower officials at HQMC to clarify corporal and sergeant advancements. ALMAR 193/84 provides a wrap-up explanation of the Corps' new monthly NCO promotion policy.

Cont. on Page A-9

CALL DIAL-A-JOB

1-976-9999

1-976-9999

1-976-9999

FREQUENTLY UPDATED JOB OPPORTUNITIES.

50¢ a call, H.I. add appl. rates

WINDWARD MALL

October & November Special Events

S	*	M	*	T	*	W	*	T	*	F	*	S
21		22		23		24		25		26		27
WINDWARD ARTIST GUILD 2ND ANNUAL FALL FESTIVAL		WINDWARD ARTIST GUILD 2ND ANNUAL FALL FESTIVAL		WINDWARD ARTIST GUILD 2ND ANNUAL FALL FESTIVAL		WINDWARD ARTIST GUILD 2ND ANNUAL FALL FESTIVAL		WINDWARD ARTIST GUILD 2ND ANNUAL FALL FESTIVAL		WINDWARD ARTIST GUILD 2ND ANNUAL FALL FESTIVAL		WINDWARD ARTIST GUILD 2ND ANNUAL FALL FESTIVAL
28		29		30		31		1		2		3
WINDWARD ARTIST GUILD 2ND ANNUAL FALL FESTIVAL		COMMENTS OR QUESTIONS ON OUR CALENDAR? CALL 247-8767		IT'S OUR BIRTHDAY, BUT YOU GET THE PRESENTS! <small>Coming in November! Watch our calendar weekly for details.</small>		HAPPY HALLOWEEN!		OPENING SOON! 14 Karat Plum A & A Diamond The Hobby Company Windward Beauty Supply		NOVEMBER 2-12 ART EXHIBIT by ED FURUIKE Center Court		ED FURUIKE ART EXHIBIT

MALL HOURS: MON.-FRI. 10 AM-9 PM SAT. 9:30 AM-5:30 PM SUN. 10 AM-5 PM

WINDWARD ENLISTED CLUB

Kaneohe Marine Corps Air Station

Presenting

Special Guest Star From the Grand Ole Opry

"LITTLE DAVE FARMER"

Country

Pig Pickin'

Saturday, October 20, 1984

Windward Enlisted Club (KMCAS)

Only \$5.00 Advance!
\$7.50 At the Door

All you can eat —

Roast Pig, Bar-B-Que Chicken, Chili, Cornbread, Corn on the Cob, Salads

6 p.m.-8 p.m.

Showtime 8:30 p.m.

Enjoy More Country Music with 2 other Bands

FOR TICKET INFORMATION PLEASE CALL 257-2657

At a glance

Cont. from Page A-8

In the past, corporal and sergeant promotions were made on a quarterly basis. Under the new system, an individual's composite score will be valid for a three-month period. The cutting score will increase or decrease monthly, according to the needs of the field.

What this means to prospective corporals and sergeants is that all data used in computing their composite scores, such as MCI course completions and off-duty educational points, must be reported on time.

In June, HQMC published an October 1984 sergeant promotion announcement by ALMAR message. Commanding officers were to ensure that all information for composite scores on each Marine corporal was up to date as of Aug. 15. This information was entered through the unit diary into the JUMPS/MMS system. On Aug. 31, JUMPS/MMS calculated a composite score on each corporal, including time-in-grade and time-in-service credit up to Sept. 30.

The scores were then sent to each unit by message and also appeared on the individual's Visual Audit. These composite scores will be used for sergeant promotions in October, November and December.

On Oct. 1, HQMC announced cutting scores for promotion to sergeant in each MOS. Marines with composite scores to match will be promoted, if otherwise qualified. On Nov. 1 and Dec. 1, HQMC will again publish cutting scores by MOS for promotion to sergeant.

The quarterly cycle starts over again in December when Marines receive new composite scores to be used in January, February and March.

The same cycle applies to lance corporals eligible for promotion to corporal. After the October 1984 corporal promotions, new composite scores will be calculated and remain effective for the November, December and January corporal advancements.

Responsibility rests on administration personnel to make unit diary entries quickly and accurately, but individual Marines should help by making sure all information about their MCI and off-duty education is up to date and turned in as quickly as possible.

Sock Hop

A teen dance Sock Hop, featuring music of the '50s and

'60s, will be held Saturday at Dependent Recreation from 7-11 p.m. Teens are encouraged to bring their parents and join in the fun.

Halloween dance

Dependent Recreation will hold a Teen Halloween Dance from 7-11 p.m. Oct. 27 at Dependent Recreation. Teens attending should wear costumes.

Intramural Rifle Competition

The First Quarter FY-1985 Intramural Rifle and Pistol Competition is scheduled for Oct. 26-Nov. 2 at the Camp H.M. Smith Training Facility. A briefing and safety lecture will be held at the training facility classroom at 9 a.m. Oct. 26.

Division, branch and section heads should submit names of competitors to the OIC of the training facility by Monday.

Career/jobs seminar

Service men and women who are contemplating retirement from military duty can attend a free "Career Alternatives" Seminar sponsored by the Chamber of Commerce of Hawaii at the Prince Kuhio Federal Building's 5th floor cafeteria from 5:30 to 9:30 p.m. Tuesday.

A panel of business leaders in industry will speak and answer questions on various career alternatives and job possibilities in Hawaii, on the mainland and worldwide. Experts will explain how to set realistic goals, identify job prospects, prepare resumes and be able to conduct effective interviews.

Each participant will receive a free 20-page workbook provided by the Chamber of Commerce and a booklet containing a complete list of sources for transition assistance put out by the

HAWAII MARINE

For more information call CWO-2 Gary Matthews at 474-6200 or 471-8530.

Hawaii State Veterans Affairs Advisory Council.

Reservations are not necessary. Spouses and the public are welcome. Dress is casual and there's plenty of free parking around the Federal Building.

For more information call Duke Pambrun at 531-4772.

Preparing for parenthood

The Personal Assistance

Center at Pearl Harbor has developed a class for active duty personnel especially designed for expectant mothers.

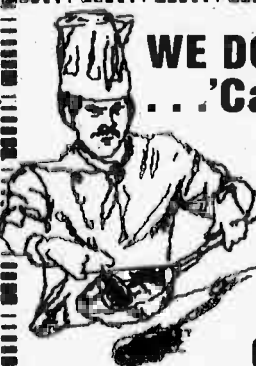
Subjects to be covered are physical and emotional changes; fetal growth and development; planning for labor and delivery; process of labor and delivery; and post partum concerns.

This course will also cover the necessary forms and plans needed to prepare, as an active

duty parent, on how to look for child care, when, and where; and other issues about returning to duty after childbirth.

Classes will be held from 10:30 a.m. to 12:30 p.m. Oct. 29 through Nov. 2, in Classrooms 1 and 2 at the Pearl Harbor Chapel complex. Classes will be taught by a registered nurse.

For more information and to register call 471-0052/0834.



WE DO PARTIES BETTER! ... 'Cause We're Professional!

Catering and Food Service!
To Your Home or Barracks...
No party Too Big or Too Small!

for more Information,
Call 257-2657/257-2873

Mr. Keith Ward or Mr. Tim McDonald

WINDWARD ENLISTED CLUB
KMCAS

Rest and Relax for just \$25

Lie by our cool, clean pool or lounge on the sundeck. Survey the sparkling Pacific from our secluded beach. Or just unwind on your own lanai or in your

comfortable room, complete with color TV. Get away from it all—one night and two days—just \$25 for two adults. (And bring the two kids along—free!)

Laniloa Lodge (next to the Polynesian Cultural Center in Laie) Call 293-9282

With FirstLine of Credit, when you need money for an investment, there's always someone you can depend on.

You can't wait to buy that real estate.
You can't wait to buy that stock.
You can't wait. Period.

Luckily, there's someone who can help you move fast. Yourself! With your FirstLine of Credit from First Hawaiian Bank, you just grant yourself a loan anytime by writing a FirstLine check. After you've applied and qualified there'll be no more applications to fill out and no trips to the bank everytime you need money.

And since FirstLine is secured against the untapped equity in your home, you get lower interest rates and lower monthly payments than with other loans.

FirstLine has a minimum line of \$10,000 which you use for purchases of \$500 or more.

And not just for investments. But when you just can't wait to take a vacation.

And when you just can't wait to buy

some new furniture.

And when you just can't wait to fix the roof, build the pool, buy a home computer, pay the tuition...



FirstLine of Credit

FIRST HAWAIIAN BANK
We say yes to you.
Member FDIC.

FirstLine is available with either a fixed or a variable interest rate. The variable interest rate is equal to the previous month's average 91-Day Treasury Bill rate, plus 4 1/2%. If the average 91-Day Treasury Bill rate were 9.5%, then the interest rate would be 14.00% Annual Percentage Rate (9.50 + 4.50 = 14.00). The Annual Percentage Rate may vary. The fixed rate will be the First Hawaiian FirstLine fixed rate in effect at the time you sign up. For the current variable or fixed rates call any First Hawaiian Branch.

hot,
dry
eyes
need
cool,
wet
eye
wash

Lavoptik

AT LONGS DRUG

LOW COST DIVORCE

Divorce & Family
Law Services

Law Office of
Ray Asasaki
& Associates

680 Ala Moana Blvd.
Suite 304

545-5755

**FOR
SALE**

October 18, 1984



Come up to Kool.

Kool gives you extra coolness
for the most refreshing sensation in smoking.
A sensation beyond the ordinary.



Warning: The Surgeon General Has Determined
That Cigarette Smoking Is Dangerous to Your Health.

Salutes

EDITOR'S NOTE: Salutes recognizes individuals for their achievements and exceptional performance and to welcome arrivals to Hawaii. The information is compiled by Unit Information Officers in conjunction with Fleet Home Town News releases submitted to the Joint Public Affairs Office.

SOMS

Promotions

PFC S.J. Ciresi
LCpl. J.A. Clair
LCpl. K.S. Larson
Cpl. B.K. Wadsworth
Sgt. J.J. Brahan
Sgt. M.A. Hiltz
Sgt. G. Skala III

Good Conduct Medals

LCpl. D.R. Cockrum
Cpl. J.J. Reardon

1/12

Welcome aboard

PFC B.J. Bailey
PFC E. Jefferson
Cpl. B.K. Gordon
Cpl. J.H. Leech

Promotion

Cpl. T.W. Swearingen

Good Conduct Medal

Cpl. T.W. Swearingen

CommSptCo

Promotions

Cpl. M.A. Flores
Cpl. K.E. Jenkins
Cpl. T.E. Keyser

Meritorious Masts

LCpl. G.R. Love
LCpl. D. Rosales
Cpl. K.T. Hanson
Sgt. J.B. DeLeon

Letters of Appreciation

PFC L.W. White
LCpl. D.J. Albin
LCpl. D. Atkins
LCpl. R.H. Brown
LCpl. J.J. Cole
LCpl. J.L. Holmes
LCpl. A.G. Kates
LCpl. J.D. McNeal
LCpl. M.T. Stewart
LCpl. T.A. Williams

LCpl. D. Zavala
Cpl. T.E. Keyser

Good Conduct Medals

Cpl. V.G. Kiggins
Cpl. R.D. Salinas
Sgt. J.B. DeLeon
SSgt. R.A. Graves

BSSG

Welcome aboard

Pvt. N.P. Gilbert
Pvt. P. Martin
Pvt. J.D. Wilson
PFC W.S. Costen
PFC R.D. Hennigh
PFC W.H. Long
PFC J.A. Romero
PFC D.D. Snyder
PFC T.M. Walker
LCpl. D.E. Dunning
LCpl. J.D. Vaden
Cpl. M. Boyer
Cpl. R.L. Bridgeman
Cpl. J.E. Dempsey
Sgt. B.L. Gilbert
SSgt. T.L. Brown
SSgt. R. Moreno Jr.
SgtMaj. A.J. Viera

Promotions

PFC L.D. Shields
LCpl. R.H. Mundy Jr.
Cpl. C.C. Banks
Cpl. R.M. Blair
Cpl. F.T. Cassidy
Cpl. T.A. Lewis
Cpl. S.N. Rinehardt
Cpl. A.M. Shulman
Cpl. J.P. Warren
Cpl. D.M. Yoder III
Sgt. G. Garcia Jr.
Sgt. T.T. Sordan

Meritorious Masts

LCpl. R.O. Jackson
Cpl. J.C. Clark
Sgt. D.L. Allen

Certificates of Appreciation

Cpl. W. Cumbie Jr.
Sgt. C.L. Cortes
Sgt. T.T. Sordan
GySgt. W.E. Daley
MSgt. G. Juare

Letter of Appreciation

SSgt. C.J. Spittler

Good Conduct Medal

Sgt. R.L. Whitlock II

Reenlistment

Cpl. P.D. Exum

H&MS-24

Welcome aboard

Cpl. R.A. Cook
Cpl. E.G. Diaz
Cpl. T.B. Gasca
Cpl. M.L. Walker

Promotion

SSgt. T.M. Anthony

VMFA-235

Welcome aboard

LCpl. K.P. Ryan
LCpl. J.W. Willey

Good Conduct Medals

Cpl. B. Deharack
Cpl. D. Lowrance
Cpl. D. Skaife

HMM-262

Certificates of Commendation

LCpl. J.S. Sharp
Cpl. D.A. Croene
Cpl. R.A. Weaver

Good Conduct Medals

LCpl. M.D. Deever
LCpl. G.D. Meier
Cpl. J.M. Alexander
Cpl. O.V. Ford
Cpl. M. Guzman
Cpl. W.F. Marek
Cpl. K.R. McKinney
Cpl. M.T. Rodgers
Cpl. R.A. Weaver
Cpl. T.L. Williamson
HM2 P.S. Briggs
Sgt. J.R. Britton
Sgt. J.A. Denton
Sgt. R. Mendez

1stRadBn

Welcome aboard

PFC M.A. Branning
PFC J.A. Leonard
PFC M.S. Loundrie
PFC J.G. Minnich
PFC L.L. Neuman
PFC D.R. Pollock
PFC F. Rivera Jr.
PFC W.E. Travers Jr.
LCpl. L.H. Anderson
LCpl. P.J. Brouse
LCpl. D.G. Brumbaugh
LCpl. M.G. Crow
LCpl. T.L. Cullison
LCpl. K.A. Erskine
LCpl. C.L. Jewitt
LCpl. R.A. King
LCpl. A.S. Swanson
LCpl. D.D. Torbedson

LCpl. N.R. Vieira
LCpl. D.D. Willis



MSgt. Salvatore N. Misiano listens as BGen. O.K. Steele, commanding general, 1st Marine Brigade, comments on his 24-year career, of which seven years have been served with Comm Spt Co. here. The retirement ceremony, was held at Dewey Square last Thursday.

Cpl. K.E. Pifer
Sgt. J.R. Hanna Jr.
Sgt. W.H. Holder
Sgt. W.S. Laird
Sgt. C.A. Peterson
SSgt. D.G. Nagy
SSgt. K.L. Peterson
SSgt. J.C. Sheppard
SSgt. C.A. Williams
2ndLt. C.R. Beaird Jr.
2ndLt. K.K. Papp
2ndLt. E.R. White
Capt. W.E. Hires

Meritorious Promotions

Cpl. H.R. Camarena
Cpl. T.C. Thompson

Promotions

LCpl. N.R. Ace
LCpl. D.G. Eldridge
LCpl. S.T. Schlabsz
Sgt. S.T. Schwartz
GySgt. E.R. Adams

Capt. W.S. Hakala
Capt. A.D. Kinslow

Navy Commendation Medal

SgtMaj. J.T. Turner

Certificate of Commendation

GySgt. C.M. Lockwood Jr.

Meritorious Mast

Cpl. P.E. Bradford
Letters of Appreciation

Sgt. J.S. Darr

Sgt. B.D. Dolley

SSgt. J.D. Smith

SSgt. M.J. Stoker

GySgt. G.A. Stewart

Reenlistments

Cpl. M.L. Flynn
Cpl. E.L. Salas
Sgt. B.K. Buckles

COMPLETE EYEGLASSES

\$45⁵⁰
SINGLE
VISION
(Clear)

THE
ORIGINATORS
OF QUALITY
AFFORDABLE
EYEWEAR

\$65⁵⁰
BIFOCALS
(Clear)

Start that optical wardrobe you've always wanted.
Included in our low price and at no extra charge whatsoever.

PLASTIC OR GLASS LENSES (1-6)	OVERSIZED OR REGULAR	PLASTIC OR METAL FRAMES	ALL LENSES COMPLY WITH FED 280 STANDARDS
INCLUDED	INCLUDED	INCLUDED	INCLUDED
Spectacle Shoppe		436 Piikoi St. 524-2730 (Corner of Waimanu & Kailua Holiday Plkoi - Across from Mart Aiea Moana Center) 261-4454	

Maui

for \$27.00

with our new
discount coupon book!
Fly direct, non-stop Honolulu-Maui
for only \$27.00
Or roundtrip
for only \$54.00

Buy a book of ten coupons
for just \$135,
tax included and use them anytime.

Two coupons (valued at \$13.50 each)
will allow you to fly from Honolulu to Maui
one way, non-stop, or with one coupon you can
fly from Honolulu to Molokai. They're even transferable,
so your friends or business associates can also use them!

Tropic Airlines/Air Molokai: the easy, dependable way to fly.

You'll prefer the hassle-free convenience of Tropic Airlines/Air Molokai. And you'll appreciate the experienced personnel who've given us a perfect record for our entire 15 years of service to Hawaii. We look forward to flying with you!

- 210 flights weekly in DC-3 and Cessna aircraft
- Free parking at the Honolulu terminal on Lagoon Drive
- Complimentary shuttle service to and from the main Honolulu airport terminal
- Complimentary in-flight beverage service on our DC-3's

Quick! Mail in your order and payment as indicated below and receive 2 free "continental breakfasts" at the Tropic Airlines/Air Molokai Honolulu terminal coffee shop. We will accept MasterCard, VISA, money orders or personal checks. Please do not enclose cash.



**TROPIC
AIRLINES**
AIR MOLOKAI

Honolulu 536-0611

Neighbor Islands call toll free 1-800-357-5616

Mail to: Tropic Airlines/Air Molokai • 216 Lagoon Drive • Honolulu, HI 96819

I would like to order _____ discount coupon book(s) at \$135.00 each. Also, include my continental breakfasts for 2 continental breakfasts.

Check this box if you wish to pay by credit card.

Card No. _____ Expires _____

Name _____ Signature _____

Address _____

City _____ State _____ Zip _____

Phone _____

Order for \$ _____

Thank you for your order.

L & Derrig & Son
BUILDERS INC.
HONSADOR MODEL
#720 32,950.00
#1104 39,950.00
#2208 78,950.00
ON YOUR LEVEL LOT
RESIDENTIAL • COMMERCIAL
REMODELING & REPAIRS
DEMOLITION & HAULING
262-5957 FREE ESTIMATES

ROSS'S APPLIANCES & FURNITURE
ON SALE NOW!
14 cubic foot REFRIGERATORS ONLY \$199⁹⁵
(While They Last)
RATTAN SHELVES STARTING AT \$39⁹⁵
Imported from Thailand
NEWLY ARRIVED!
BEAUTIFUL NEW 3 PIECE BURI SETS \$129⁹⁵
Set incl. 2 Chairs & Table
"AT ROSS'S
WE DON'T FIGHT
INFLATION,
WE BEAT IT!"
HONOLULU STORE
(Corner of Himitz Hwy. & Kalihl Street)
841-7336

KAILUA SUPER SAVER SALON
OUR SPECIALTIES FOR WOMEN, MEN & CHILDREN
• PRECISION HAIRCUT \$6
• SHAMPOO/CONDITIONER/FINISH \$6
• PERMANENT WAVE
with either or both of the above additional \$6
NO APPOINTMENT! COME IN TODAY!
Monday, Tuesday, Wednesday, Saturday, 9:30 a.m. - 4:30 p.m.
Thursday, Friday, 9:30 a.m. - 4:30 p.m.; Sunday, 10 a.m. - 4 p.m.
(Services subject to time availability)
Must be 18 years or older for permanent wave.
Long hair slightly higher.
LIBERTY HOUSE
AN ALOHA COMPANY

Voting reps

The following is a list of voting officers for Station and Brigade units:

Unit	Name	Phone
H&HS	Capt T.H. Gawiner	2912
SOMS	1stLt E. Espiritu	2931
HQC, Bde	1stSgt I.E. Black	3304
HQC, 4d Marines	1stLt J. Cromwell	2893/2559
1 S	2ndLt M. Alles	3107
2 S	1stLt M. Leveque	2071
1 12	1stLt J. Davis	2810
3dAAVBn	2ndLt S. Harris	2563
3dReconBn	1stSgt L. Neer	3160
CommSptCo	SSgt J. Polanco	3587
1stRadBn	CWO-2 A. Costanzo	2725
BSSG	2ndLt D.E. Chapman	3413
H&MS-24	CWO-3 C.A. Harris	2321/2359
MARS-24	Capt S.E. Allen	3191
MACS-2	WO R.G. Pace	2044
VMFA-232	1stLt R. Menton	2021
VMFA-235	Capt R. Trombador	2417
HMM-262	1stLt S.L. Cash	2777
HMM-265	Capt S. Wellman	2489
HMH-463	1stLt D.D. MacLean	2352

Moving voters

Absentee voters who have already requested absentee ballots should notify the appropriate election officials if their mailing address has changed.

These ballots are usually not forwarded to new addresses, so election officials must have a current mailing address so voting materials

can be delivered.

All current mailing addresses must be indicated on item 11 of the Federal Post Card Application when requesting registration or an absentee ballot.

For more information on military absentee voting procedures, contact your unit voting officer.

SUSAN H. CHAPMAN, M.D.
Obstetrics & Gynecology
HMSA - CHAMPUS
Participating Physician
Pali Palms Plaza Suite A305
Kailua, Hawaii
Hours by appointment 254-1588

KDEO COUNTRY RADIO

TOP 10 COUNTRY SONGS

OCTOBER 14, 1984

LAST WEEK	THIS WEEK	TITLE	ARTIST
1	1	City of New Orleans	Willie Nelson
2	2	I've Been Around Enough To Know	John Schneider
3	3	Give Me Just One More Chance	Exile
4	4	She Sure Got Away With My Heart	John Anderson
5	5	Second Hand Heart	Gary Morris
6	6	If You're Gonna Play In Texas	Alabama
7	7	You Could Have Heard A Heart Break	Johnny Lee
8	8	I Don't Know A Thing About Love	Conway Twitty
9	9	The Lady Takes The Cowboy Everytime	Larry Gatlin & The Gatlin Brothers
10	10	Fools Gold	Lee Greenwood

Here's the Top Country Songs in the Nation on the WEEKLY COUNTRY MUSIC COUNTDOWN SUNDAY MORNINGS at 9 A.M. on AM94 at KDEO Country Radio.

THE FUTURE OF COMPUTERS COULD BE



COMPUTER UNIVERSITY is a computer training center that provides a wide range of computer training programs. The center is located in Honolulu, Hawaii, and offers courses in a variety of computer applications.

UNIQUE ADVANTAGES

- Comprehensive training programs
- Hands-on experience with the latest computer technology
- Flexible scheduling to accommodate your needs
- Affordable tuition and fees

For more information, call 535-1111



Education

Reference room

The reference room of the Joint Education Center has a large number of college catalogues, brochures and schedules from local schools. Information is available on various scholarship programs and financial aid.

St. Louis High School offers a high school program to

dependents, and an English class and math class are also available. Cost for each course is \$40.

Career & college fair

The Tenth Anniversary Hawaii Career & College Fair will be held Nov. 16 & 17, from 9:30 a.m.-4 p.m. at the Blaisdell

Center exhibition hall.

The free fair helps high school juniors, seniors and recent graduates, counselors, parents, college students and adults planning career/education changes to determine career education opportunities or methods.

For more information contact SSgt. Moravetz at 257-3572.

Free refresher courses

Do you want to review algebra, math, computer awareness, Hawaiian history, accounting, shorthand, English, Japanese, Spanish or sign language?

These and other courses are available locally to persons 18

Cont. on Page A-13

SHAPE IT UP AND SHOW IT OFF

WITH
MADEMOISELLE'S

1/2 OFF
ENROLLMENT PLUS

**ONE
YEAR
FREE!**

OFFER GOOD ON
FIRST VISIT ONLY

Mademoiselle® Spa Lady



Energize with the hottest aerobic and jazz classes anywhere. **shape it up** with Lifecycles® modern exercise equipment and more... then relax in our steam, sauna, whirlpool and Wolff® tanning beds. We've got it all and it's waiting for you now... so join Mademoiselle today because where you **shape it up** is our business... where you **show it off** is yours! **Shape it up and show it off at Mademoiselle...**

WINDWARD CITY
SHOPPING CENTER

CALL NOW

235-3511

HOURS: 9-9 Mon.-Fri. 9-6 Sat.
12-6 Sun.

BABYSITTING • AMPLE FREE PARKING
OFFER EXPIRES 10/31/84

WINDWARD ENLISTED CLUB

Kaneohe Marine Corps Air Station

Presents

Superstar Millie Jackson

WORLD TOUR

"Queen of Sass"



L.A. Times says: "(Millie Jackson) is better than (Bette) Midler and just about any other female entertainer you can name — Donna Summer, Barbara Streisand, Diana Ross, Linda Ronstadt, etc. ... (Millie)... electrifies audiences with both her vocals and outrageous patter... sings with so much fury that you can almost see fire flaming out of her mouth."

I.P.A. WORLD PRODUCTIONS
2153 North King Street, Suite 311-A
Honolulu, Hawaii / (808) 841-5490

October 27, 1984 — Showtime 8 & 11 p.m.
*All Ranks *2 Big Shows
*Only \$5.00 Advance —
\$10.00 AT THE DOOR
Doors Open 1800
Reserved Seating Available

Education

Cont. from Page A-12

years of age or older who are not in high school. Classes normally meet two nights a week, for eight weeks, and are conducted at local high schools.

If you have completed high school and college, you still qualify for these free courses. There are no military forms to complete. The programs are offered by the Windward School for Adults, which also offers English For The Foreign Born at the Family Services Center here. For more information call the school at 254-1534, or the Joint Education Center at 257-2061. Free schedules and simple short application forms are available.

Tuition assistance

HQMC — Marine Corps officials are convinced that an individual interested in self-improvement is the kind of person who will shoulder responsibility.

Perhaps that philosophy is why nearly 43,000 Marines enrolled for off-duty education under the Tuition Assistance Program in 1984, and why officials at HQMC expect that figure to hit more than 45,000 by the end of 1985.

Tuition assistance makes good sense for those active duty Marines who need money

for off-duty education. The program covers 75 percent of the tuition costs for Marines, with the exception of sergeants and above, with less than 14 years of service, who receive 90 percent of the tuition charges.

Marines applying for TA must enroll in classes at a college or university accredited by a regional association — New England, Middle States, North Central, Northwest, Southern or Western. Additionally, students are limited to a maximum of two concurrent courses, the off-duty education load determined by HQMC officials as being manageable by the student.

Marines interested in pursuing higher education, but who haven't graduated from high school, may use the TA program to get their diploma. A 100 percent tuition rate will be approved if the courses are applicable to a high school credential and are undertaken at approved public high schools or regionally accredited educational institutions. The maximum of two concurrent courses rule also applies.

Information on the TA program can be found in ALMAR 199/84 or by contacting SSgt. Moravetz at 257-3572.



Kion Tolbert, son of Cpl. W. Tolbert, takes a break from the festivities of Comm Spt Co.'s Family Day.

Getting acquainted

Comm SptCo hosts family day

by SSgt. W.S. Saunders

"Discovery Day" for most was a day of fun in the sun. For the family members of the Marines from Communication Support Company, fun in the sun was a time to discover how to cope with living in Hawaii.

"Oftentimes, many sacrifices and hardships are endured by our Marine Corps family," said Maj. E.C. Walke, Com Spt Co's CO. "Doing without their spouse on duty days, field problems and deployments, problems or situations often crop up which leaves them unprepared and not knowing where to turn.

"In Hawaii, a variety of professional services are available to military dependents free of charge," Walke added. "Not all of us are aware of what is available and how the service

can assist in their daily problems."

Representatives from Navy Relief, Family Service center, Special Services, R&I Cross, Provost Marshal's Office, Counseling and Assistance Center, and the Brigade Chaplain provided information on their respective areas of expertise.

The highlight of the day was a chili-cooking contest, which pitted individual platoons of Comm. Spt. Co. against one another. The competition was "hot" and heavy, and the winning decision was on the taste buds of the commanding officer. After the taste test, Wire Platoon emerged

victorious.

"Family activities are a major concern of the Commandant," said BGen. O.K. Steele, "and it's activities like this that keep our Corps healthier and happier."

SAVING ENERGY IS SAVING MONEY



HAWAII'S BIGGEST USED FURNITURE LIQUIDATION EVER

HAPPENING NOW!
Two major hotel renovations offer you quality used furnishings at bargain prices!

desk-dresser	89.00
mirror	12.00
nightstand	29.00
headboards	12.00
rattan occ. chair	45.00
rattan side chair	29.00
floor lamps	19.00
table lamp	15.00-39.00
lanai chairs	19.00-29.00
lanai occ. tables	10.00
twin bed	39.00
double bed	49.00
queen bed	59.00
king bed	79.00
bedspreads	14.00-19.00
drapery panel	12.00-18.00
carpet approx. 11x17	22.00

INTERISLAND FURNITURE, CO.

717 Moowaa Street
Back of Kapalama Shopping Center

CALL 847-1361 FOR DETAILS Monday thru Saturday 9 a.m.-5 p.m.

Support the Combined Federal Campaign
Give to National Right To Life



National Right To Life
Educational Trust Fund

Suite 402 419 7th Street NW Washington DC 20004
(202) 426-8800

ROYAL OAK • ROYAL OAK • ROYAL OAK • ROYAL OAK • ROYAL OAK

CONTAINER LOAD SALE SOLID OAK FURNITURE



**SOLID OAK
DINING CHAIRS**
Late detailing comfortable
saddle seat
Special from \$99.00
6 Styles to Choose From



**SOLID OAK ROUND
DINING TABLES**
Come with ball and claw or plain
leg, in sizes 36", 42", 44", 48" with
extension leafs



**SOLID OAK ROUND
DINING TABLES**
Come with ball and claw or plain
leg, in sizes 36", 42", 44", 48" with
extension leafs

OPEN SUN.
10-4

Hawaii's Largest Selection of Quality Antique Replicas

307 KAMANI 533-7666
ROYAL OAK CO. M.S. 9:30 p.m. Sun. 10-4 p.m. M-S
Prices Good Thru Oct. 31, 1984

KUHIO 2 TONIGHT: 6:30-8:30-10:30
941-4422 SAT. & SUN. - 12:30 CONT.

Out of nowhere came a scrawny colt no one wanted. Then came the victories and speed that made a nation cheer. When he couldn't lose he became a champion and when he couldn't be bought he became a target.



PHARLAP

His name means lightning.



Fly American to the other Big Island.



Our specially discounted military fares make it easier than ever to reach home.

You can fly American direct to Los Angeles, San Francisco or Dallas/Fort Worth, then connect to any of more than 75 destinations on the Mainland. And our Dallas/Fort Worth

non-stop service is the most convenient way to the South.

For information and reservations call your nearest SATO or American Airlines at 526-0044.

SAVE!

20% to 25%

RETAILERS!
You traditionally depend on the Christmas Shopping Season for up to 45% of your Gross Annual Sales. Target YOUR CLIENT, in YOUR Community, fast & effectively...

Call now for details on how you can advertise your products and services in the best possible way — during the busiest season of the year — and **SAVE!**

235-5881

Sun Press

Publishers of Hawaii Navy News, Hawaiian Palcon, Hawaii Marine, Waipaho Sun News, Waipaho Sun Times and Sun Press
45-018 Aloha St., Kaneohe, HI 96744

American Airlines

Something special in the air.™

Maintaining a party line

by SSgt Grog Berry

The Essential Subjects Test covers field sanitation, and even lists the dimensions for a sanitary hole, but not how to erect a general purpose tent.

Another section covers individual tactical measures, but doesn't list any suggestions on how to conduct defensive measures and continue performing "normal" duties.

With this in mind, Communications Support Company, 7th CommBn., spent five days in the field last week experiencing long nights and the discomforts and hardships of field life.

"This is my first time in the field," said Sgt. Sharon Scott, a seven-year veteran and one of six women who accompanied their 80 male counterparts. "It's not too bad, but I do miss

hot showers."

"This is the best way for us to find out what we have to do in a combat environment," said Sgt. Joe White, whose section was responsible for supplying electricity for the camp set up at Bellows Air Force Station.

"Two men in my section haven't been in the field before, and this is helping them tremendously," White said. "I've encountered field problems I haven't dealt with before, so it's good training for everyone."

White and his crew laid more than 2,000 feet of cable, and constantly provided the camp with electricity.

"The name of the game is training," said 1st Sgt. William Haire, company first sergeant. "For this to get any better, they'd have to be shooting at us. Everyone here is where they belong, and we're working a three-shift system to maintain communications."

The three shifts kept several sections short-handed, but the idea behind the exercise was to give the Marines a taste of what it would be like in combat. Daily routines, such as Unit Diary feeds and routine message traffic, continued despite the added tasks of running a "field mess," maintaining security and providing routine and secure communication networks.

Every section of CommSpt-

Co. participated in the exercise, with motor transport, supply, security, admin and repair technicians taking their place alongside wiremen and other communicators. "The teamwork is necessary for the unit to perform its mission," Haire said.

"We support the field headquarters with complete communications capability," said 2nd Lt. Gary Burton, Comm Center platoon commander. During the training exercise, the communicators proved the reliability of their equipment by maintaining open lines of communication to a retransmission site at Kansas Tower, to the Naval Communications Area Master Station Eastern Pacific at Wahiawa, and to the

satellite-equipped defense communications system.

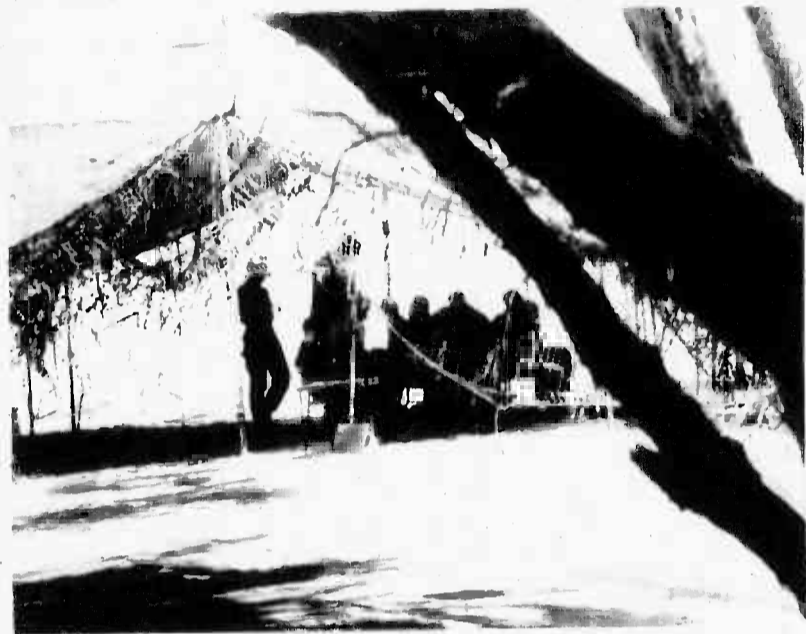
The Marines used a communications van to keep the words flowing, and offered the simulated task force with a secure message circuit, via satellite, to anywhere in the world. A cryptographic machine provide the key for security of message traffic.

"We made a few mistakes this time, but that won't happen again," Burton said. "The more time we spend in the field, the closer we get to perfection."

Perfection may be difficult to obtain, but if they couldn't accomplish the unit's mission in combat, it would be a silent world for units commanders and, according to Haire, "If we can't talk, no one else can."



LCpl Julian Haywood, a field wireman, checks the circuits on a 30-line switchboard which allows Comm Spt Co. the flexibility of voice communications within the compound at Bellows Air Force Station, as well as between the compound and the Air Station by commercial telephone lines during the unit's 5-day field exercise.



Marines from Comm Spt Co. gather beneath camouflage netting for a meal when the company spent five days at Bellows Air Force Station last week improving its field performance.

Is Your Auto Insurance being
If so . . . CALL

AVNET Insurance Associates, Inc.

Representing various Insurance Companies
to select the perfect insurance plan for you

- ✓ YES - We give auto quotes on the phone
- ✓ YES - We have good driver rates
- ✓ YES - We use computer search for the lowest rates
- ✓ YES - We have immediate coverage



254-3511

25 Kaneohe Bay Drive • Aikahi Park Shopping Center
"It pays to Compare"

MICROWAVE OVEN SALE

SALE STARTS
TODAY!

A CONTAINER OF NEW MICROWAVE OVENS
HAVE ARRIVED FOR IMMEDIATE LIQUIDATION.
ALL ARE REDUCED AT PRACTICALLY WHOLESALE COST.

SALE ENDS
SUN. 10/21/5 p.m.

VALUES TO \$498

\$236

Limit 2 per
customer

FREE!

cookbook
with oven
purchase

WE GUARANTEE

The lowest prices in Hawaii
including all Military Exchange
outlets

166

Sug. Retail \$299

497

Sug. Retail \$599

NEW! TAPPAN SPACE SAVER — Sug. Retail \$299 **NOW \$199**

PACIFIC SURPLUS & DISTRIBUTORS LTD.

MON THRU FRI 9:30-6:00 p.m.
SATURDAY 9:30-5:00 p.m.
SUNDAY 11:00-5:00 p.m.
THURS CLOSED

262-8121

1212 KANEIUA RD

KAILUA

TELE 3010

5571 KAHUKOUE

PEARL CITY



CAREER SEMINARS

MAJOR NATIONAL AND INTERNATIONAL CORPORATIONS
SEEKING PROFESSIONAL MANAGERS WILL BE INTERVIEWING
IN HAWAII IN OCTOBER 1984.

CAREER SEMINARS will be seeking Junior Military Officers with a college education (or the equivalent) and the added experience and discipline of military service. During our October 20-29 visit, we will be selecting and preparing applicants for interviews with the representatives of major corporations accompanying us. A few of the companies represented by us are:

AIR PRODUCTS	GALLO	PFIZER
AMERICAN HOSPITAL SUPPLY	JOHNSON & JOHNSON	PROCTER & GAMBLE
APPLIED MATERIALS	MICHELIN	RICHARDSON-VICK
AVANTEK	MOBIL	TEXAS INSTRUMENTS
CORNING GLASS	NALCO CHEMICAL	VARIAN

Our schedule will be as follows:

INFORMATION SESSION: Saturday, October 20, 1984 - 1:00 to 3:00 p.m.
in the Garden Lanai Room of the Ala Moana Hotel. Open to all interested Junior Military Officers and their spouses. Included will be information on current market conditions, interviewing skills, major industry in general and a question and answer period.

INDIVIDUAL INTERVIEWS: Saturday - Thursday, October 20-25, 1984.
Appointments may be arranged following the INFORMATION SESSION or by contacting Susan Rau in San Francisco, (415) 986-1429 before October 18, or at the Ala Moana Hotel starting October 18.

COMPANY INTERVIEWS: Selected applicants will be prepared and may interview with corporate representatives the week following the seminar.

PLACE: Ala Moana Hotel, 410 Atkinson Dr., Honolulu - 955-4811

NOTE: all CAREER SEMINARS' costs are paid by our client companies

CAREER SEMINARS • 260 CALIFORNIA ST., SUITE 405 • SAN FRANCISCO, CA 94111 • (415) 986-1429

Get

ONE YEAR FREE!

SAVE \$100! **

2 Year Time Offered



Great exciting aerobic classes
complete Fitness
center with the largest Nautilus &
free weights in Hawaii.
Perfect for better time than right
now to join your friends at
the most complete

INTERNATIONAL

GIVES YOU

the best

of fitness

center

in Hawaii

at the

International

Fitness & Racquetball Center

at the

International



Marines from Co. G, 2/3 race toward HMM-262 helicopters at LZ Boondocker. The aircraft inserted the infantry Marines at locations in the Kahukus training area.

MCCRES evaluates airworthiness

By SSgt. Bob Torres
Early morning briefings took place in a crowded, hot, ready room recently as HMM-262 prepared for their participation in the Marine Corps Combat Readiness Evaluation System Test "Cree Satyr-1984."

Intelligence reports of enemy strengths and possible strikes were passed. Reports on weather situations and points of attack, paths of regress, code words and problem situation maneuvers were discussed. Intelligence updates, as more information was received, were passed as the sun began to peek over the Mokapu peninsula.

As the ready room briefs were completed, pilots and crews prepared their helicopters for the mission. Cautious, yet confident, they began their day.

Helicopters left the pad for LZ Boondocker to pick up a contingent of "G" Co., 2/3 Marines for insertion into the Kahuku training area on the North shore of Oahu. With quick precision, the infantry Marines boarded the helicopters and were flown to their objectives. As pilots neared drop zones, they monitored their screens and visually searched for aggressor forces.

The Marines were offloaded and the helicopters prepared for another segment of their operation. More intelligence reports were received. The squadron was tasked with evacuating an American ambassador and a group of people that had been rescued by Marines.

Maps were pulled and locations for pickup were plotted. As the helicopters swooped into the area, Marines quickly escorted their "guests" aboard the helicopters and were extracted. Another part of the operation had been completed successfully.

Earlier in the week, however, there had been a surprise waiting for one of the helicopters.

"Basically, what we (the squadron) had was an insertion at Pukapu," said 1stLt. Steve Bennett. "Just prior to departure from the zone, we had a simulated gas attack. We received chemical agents of some type and on return to the pad, we went through a decontamination process. The aircraft called in and said they had gas. The area was quarantined, the pilots had their gas masks on and stayed in their aircraft until they were told to get out."

The squadron NBC team used several solutions of soap and water to wash the aircraft down. The pilots were then instructed to go through a field shower and then remove their NBC gear. "This was a test for the squadron decontamination team," continued Bennett. "This is the first time they had worked together, and they did alright. We used one aircraft for the purpose of the drill. There were a few minor problems but it was good training."

"This year, we had a lot of new people in as key personnel," related 1stLt.

Chuck Wright. "This was a learning experience for a lot of the pilots. Some of us saw basically how to do it last year, but most of the experienced personnel have been transferred. We used new people, and let them get out there and make a few mistakes. That's what the evaluators look for."

"They judge us on things like, did we brief everything, or did we continue to march if it wasn't briefed. Nighttime flying is difficult at best, but when we went out Wednesday night, everything about the mission had changed. We got out there (Kahukus) and things were different than what we had planned. But by making two 15 to 20 second radio transmissions, everyone knew exactly what we were going to do. That's what the evaluators wanted to see; that's realistic," Wright said.

"Overall, we got to the right place at the right time," said 1stLt. Mitch Bauman. "We picked up the people that we were supposed to, and it went well. Whether we got every detail perfect wasn't what mattered. The overall mission was done, and that's what did," Bauman related.

"We got all our aircraft in the air," said LtCol. D.M. McSorley, commanding officer, HMM-262. "The entire squadron flew. Overall, everything went well. We had strong maintenance of the aircraft, the morale is high — we're combat ready," concluded McSorley with a smile.



Four CH-46 helicopters from HMM-262 approach the helo pad as they return from the Kahukus training area.



Dust and debris are strewn about as Marines from Co. G, 2/3 board an HMM-262 helicopter during "Cree Satyr-1984" at Kahukus.



Terrorists no longer terrorize as Co. G, 2/3 Marines stand guard over them near a Kahukus landing zone. When HMM-262 helicopters arrived, the Marines quickly escorted their "guests" aboard the aircraft and returned to the Air Station.

Pig pickin — Hawaiian style

by Sgt. Christopher Wood

BELLOWS AIR FORCE STATION, Hawaii — Golden sunshine beamed through the foliage as approximately 1,400 H&MS-24 Marines and dependents celebrated esprit de corps — Hawaiian style — on Oct. 6.

A luau, featuring entertainment by the local band "Hawaiian Four," hula girls, softball and fun on the beach, was conducted to bring H&MS-24 Marines together. A variety of food and drink was offered, but the day's highlight was when a huge Kalua pig was "resurrected" from a smoking pit.

"Lauas are very Hawaiian, and watching that pig come out of the sand was nice," said LtCol. M.M. Sheedy III, H&MS-24 commanding officer. According to Sheedy, the luau was organized as a tribute to the squadron's sergeants and below.

"The officers and staff NCOs decided that they'd do something for the enlisted Marines," Sheedy explained.

"You can always tell Marines that they're doing a good job, but it's a little bit nicer to reward them for the good job they're doing."

Squadron personnel were encouraged to bring friends and relatives to the festivities. "If somebody showed up, we were going to feed them," Sheedy said. "It's tough for a unit as big as ours to get together very often, but I think it's very important for us to do so."

Both Marines and family members reacted enthusiastically to the luau. "I think it's fun," said Debra, wife of GySgt. Danny Vinson. "It's good for all of the families to get together. And it's nice to get to know other wives in the squadron."

Those who attended the luau could be found playing softball, dozing in the shade or joining their spouses in the ocean. But no matter what activity they were involved in, each shared the knowledge that they were part of a larger family: the family of H&MS-24.



Playing on the beach — a favorite pastime for Marine families attending the H&MS-24 luau.



5¢ PITCHER OF BEER!

With The Purchase Of One Pitcher At Regular Price
EVERY SUN. THRU THURS. — DAY OR NITE
OPEN 11 AM — 2 AM

CHER'S BUNKHOUSE

Waimanalo Shopping Center

Entertainment with
DONNA WHITE & THE HIRED HANDS
EVERY FRI. & SAT. 9 PM - 1 AM

Bring This Coupon!



Schedules effective Nov. 1

FLY DELTA FROM CALIFORNIA TO OVER 80 U.S. CITIES. YOU'LL ENJOY THE DIFFERENCE!

Delta has nonstops, thru-jets and other service from both Los Angeles and San Francisco to cities across the U.S.

Delta fans out from Los Angeles with flights to cities in the South, Midwest and Northeast. Fly nonstop to Atlanta, Cincinnati, Dallas/Ft. Worth, New Orleans or San Francisco. Or straight through to New York, Washington, Cleveland, Raleigh/Durham, Shreveport, Ft. Lauderdale, Tampa/St. Pete, West Palm Beach, Orlando (home of EPCOT Center/Walt Disney World) or San Juan.

From Ontario fly Delta nonstop to San Diego, Atlanta or Dallas/Ft. Worth. Or through to New York's LaGuardia Airport, Boston, Cincinnati or Baton Rouge.

From Delta's San Francisco hub, we've also got flights to cities nationwide. Nonstops to Atlanta, Cincinnati, Dallas/Ft. Worth and Los Angeles. Straight through to New Orleans, Orlando, Boston and New York's LaGuardia.

Enjoy the extra comfort of Delta's Wide-Ride Superjets. Delta flies the TriStar to most of the cities we serve with nonstops from L.A. and San Francisco. And many of our thru-jets are TriStars. From Ontario, our great new Wide-Ride Boeing 767s fly nonstop to both Atlanta and San Diego.



Save up to 50% with Supreme Super Saver Fares. You and your family can save up to half of the regular Day Tourist Fare with Supreme Super Saver Fares. Seats are limited, and there are special requirements. So book your reservations as early as possible.

Or save 25% off with our special Military Fare. No advance purchase requirements. You don't fly stand-by. You can get on any flight, at any time, that has available space.

Check your on-base Scheduled Airline Ticket Office (SATO) or Delta for further details and current fares. All schedules are subject to change without notice.

Starting December 14
DELTA WILL FLY NON-STOP FROM HONOLULU TO DALLAS/FT. WORTH, THROUGH TO ATLANTA.
Leave any evening at 6:40pm and arrive the next morning.



THAT'S THE DELTA SPIRIT™

Lex Brodie's

**OUR TIRE
EXPERIENCE
MAKES THE
DIFFERENCE!**

SEE US SOON!

You Save up to 30% on High Mileage Steel Radial Tires, and with our Full Service Prices, you get Free Mounting, Balancing, Wheel Weights, Valve Stems, Repairs, Rotation, Alignment Checks and Accurate Tire Records. No One has a Better Tire Deal! Yes, Come See Us!

The following tire prices are firm until Sat., October 20. If your size is not listed below, please call us. We can help you.

GOOD!

**AURORA
FIRST QUALITY*
APPROX. 35,000 MILES*
BLACK STEEL RADIALS**

TIRE SIZE	NO SERVICE PRICE	FULL SERVICE PRICE
155-12	20.25	35.25
155-13	22.75	37.75
165-13	26.75	41.75
185-14	35.25	50.25
165-15	30.50	45.50
175/70-13	26.25	41.25
185/70-13	31.00	46.00
185/70-14	34.25	49.25

**NATIONAL
FIRST QUALITY*
APPROX. 35,000 MILES*
WHITETALL STEEL RADIALS**

175/80-13	39.00	54.00
185/80-13	40.50	55.50
185/75-14	41.25	56.25
195/75-14	43.50	58.50
205/75-14	46.75	61.75
215/75-14	49.00	64.00
225/75-14	51.00	66.00
205/75-15	47.75	62.75
215/75-15	51.75	66.75
225/75-15	53.50	68.50
235/75-15	57.00	72.00

BETTER!

**TOYO
SEMI-PREMIUM QUALITY*
APPROX. 40,000 MILES*
BLACK STEEL RADIALS**

155-12	29.00	44.00
145-13	30.00	45.00
155-13	31.00	46.00
165-13	36.00	51.00
175-13	37.00	52.00
175-14	42.25	57.25
185-14	43.75	58.75
165-15	42.00	57.00

**70 SERIES BLACK STEEL
RADIALS**

175/70-13	41.75	56.75
185/70-13	46.75	61.75
185/70-14	49.25	64.25
195/70-14	52.75	67.75

**75 SERIES WHITETALL
STEEL RADIALS**

185/80-13	48.50	63.50
175/75-14	47.25	62.25
185/75-14	52.25	67.25
195/75-14	56.50	71.50
205/75-14	60.50	75.50
215/75-14	68.25	83.25
195/75-15	57.50	72.50
205/75-15	62.75	77.75
215/75-15	66.25	81.25
225/75-15	70.00	85.00

MICHELIN
BECAUSE SO MUCH IS RIDING ON YOUR TIRES.



BEST!

**MICHELIN
PREMIUM QUALITY*
APPROX. 50,000 MILES*
BLACK STEEL RADIALS**

155-12	41.00	56.00
145-13	36.75	51.75
155-13	44.00	59.00
165-13	51.25	66.25
175-14	61.75	76.75
185-14	67.75	82.75

**70 SERIES BLACK STEEL
RADIALS**

175/70-13	59.00	74.00
185/70-13	67.00	82.00
185/70-14	73.50	88.50
195/70-14	78.00	93.00

Note: Our No-Service prices for outer island and over-the-counter sales do not include services. Hawaii 4% state tax and air freight charges for shipments to the outer islands must be added. Easy pay plan available. VISA and MasterCard are accepted.

*Lex Brodie Quality Designation
*Mileage expected on smaller cars under average Hawaii driving conditions.

Lex Brodie's
TIRE COMPANY
HAWAIIAN ISLANDS
HONOLULU
841-101 Honolulu Hwy. 701-80 Queen St.
(Next to McDonald's) Ph. 871-4541 Ph. 130-9281

Island Happenings

Learn modeling

Le Elegance, a fashion troupe comprised of military personnel and dependents, will conduct auditions from 10 a.m. to 1 p.m. on Saturday at Fort Shafter's Kalani Recreation Center.

Le Elegance, a nonprofit organization, was formed to give servicemembers and military dependents an opportunity to learn modeling techniques and present fashion shows to the military and civilian community.

Models do not receive pay for participating in fashion shows, but gain valuable

knowledge and experience which may lead to a professional career. Proceeds from each show are given in part to local charitable organizations with the remainder, excluding expenses, going into a scholarship fund set aside to assist models who plan to attend college.

Membership in Le Elegance is open to all servicemembers and military dependents. The minimum age required for membership is 16. No prior modeling experience is necessary; however, prospects must have the ability to learn simple routines which may be required during the audition.

Models selected for member-

ship are taught fundamental modeling techniques and routines for upcoming shows. Fashions worn by models in each show are donated by various military exchanges and civilian boutiques throughout Oahu.

Silver Beaver Award nominations

The Aloha Council, Boy Scouts of America, is asking the public to recommend outstanding adults for the Silver Beaver Award to be presented at the Annual Meeting and Recognition Dinner on Jan. 30, 1985.

All 4,500 registered volunteers of the Council are eligible, except those who have previously received the Silver Beaver Award, which recognizes both men and women who have given distinguished service of exceptional character to the youth in the Pacific Basin.

Leadership given to other youth-serving agencies and organizations, as well as Scouts, is considered by the committee chaired by Gov. George R. Ariyoshi. Deadline for submitting recommendations is Nov. 30.

For recommendation forms and information call the Aloha Council at 595-6366.

Military children's education forum

The Pearl Harbor Personal Assistance Center will present a forum on special education and military children on Wednesday, from 9 to 11 a.m.,

in building 150.

Specialists in the diagnosis and placement of children in Oahu's Central District schools, and representatives of agencies who advocate for children and their families will be on the panel.

The purpose of this forum is to inform participants of the

Cont. on Page B-4

DEERS Update

Family members not enrolled in the Defense Enrollment Eligibility Reporting System will now be denied nonemergency medical care at military health treatment facilities, according to DoD officials.

September Leave and Earnings Statements listed information contained in DEERS. Marines with incomplete information should contact their unit administrative office as soon as possible.

There are exceptions to this policy. People who will not be denied routine care for nonenrollment are children younger than one; families of Marines stationed overseas; and newly acquired (less than 120 days) family members. These individuals will be treated upon the presentation of a valid DD Form 1173. Parents/guardians may use their DD Form 1173 for children younger than 10.

Marines whose dependents are denied care can update the DEERS information through their unit administrative office without much time being wasted.

BONUS COUPON

HAWAII RECYCLING SERVICES
ANNOUNCING THE OPENING OF OUR NEW PLANT IN "Kaneohe"

We already pay top dollar for your aluminum cans, newspaper, computer paper, IBM cards, office ledger and car batteries. Now, get a 33% bonus for your newspaper when you bring this coupon to one of our 7 convenient locations.

LOCATIONS: Kaneohe, Sand Island, Waipahu, Hale, Puhukua, Moanalua & Milliani
For more information call 841-0967
offer expires 10/31/84

BONUS COUPON

NEW 1985 ZENITH Advanced SYSTEM 3 THE SMART SET
The Color TV with a Computer Brain!

25" Diagonal ULTRAMODERN STYLING PLUS ZENITH SPACE COMMAND® 7000
Into a world of unsurpassed TV performance comes this Advanced System 3 Smart Set in an exquisite console cabinet finished in simulated Rosewood on top and ends. Its Computer remote control, besides its customary remote control functions, also provides Zenith's newest Parental Control and Flashback features, plus Full-Use Dual TV/CR convenience... and more in Zenith Advanced System 3!

\$75 DIRECT FACTORY REBATE TO CONSUMER

18" Diagonal DUAL SPEAKER SOUND PLUS ZENITH SPACE COMMAND® 6000
Four speakers, two on each side, are arranged inward for optimum sound-centering. Great remote control convenience, too, with Zenith Space Command and 6000 which even controls Zenith VHS video recorders.

\$50 DIRECT FACTORY REBATE TO CONSUMER

NEW CHROMACOLOR CONTRAST PICTURE TUBE
Provides a picture with exceptional contrast and extraordinary color fidelity.

Z-TECH CHASSIS
Zenith's most automatic chassis ever. So automatic it monitors itself to assure constant peak performance.

EXCLUSIVE COMPUTER BRAIN
Maintains color fidelity year after year automatically.

ON-SCREEN CHANNEL NUMBER AND TIME DISPLAY
Lets you check the number of the channel you are watching...and the time.

PATENTED VIDEO FILTER
Reduces picture noise and snow effect in the color picture. Especially effective in weather signal areas.

178 CHANNEL TUNING
Select all VHF and UHF plus up to 122 cable channels without a converter (except scrambled channels).

NEW FLASHBACK FEATURE
One-button control for switching back and forth between shows on two different channels (Model SA251X only of sets shown).

FOUR SPEAKER SOUND SYSTEM
For rich, dramatic TV sound.

NEW REM-PLUS
Allows easy connection of currently available and anticipated developments such as Stereo TV, sound decoder, Teletext Decoder and selected Cable TV decoders.

ADVANCED COLOR SENTRY
8 automatic sub-systems work together to control the color picture, correct it 30 times a second automatically.

25" Diagonal FAMOUS ZENITH SYSTEM 3 WITH SPACE COMMAND® 2000
Charming country-style cabinet in richly grained Pecan finish featuring Chromacolor Contrast Picture Tube, Electronic Keyboard Tuning featuring 187 Channel capability, and Space Command 2000 to provide all the normal remote control functions besides operating Zenith VHS Video Recorders.

\$50 DIRECT FACTORY REBATE TO CONSUMER

NEW AT YOUR PX...or available thru your Special Order Desk

VOTE FOR:
MALINA-WRIGHT, VerlieAnn
STATE BOARD OF EDUCATION
CANDIDATE AT-LARGE

- Qualified
- Experienced
- Dedicated

EDUCATION IS EVERYONE'S BUSINESS - YOURS & MINE!
(Paid for by friends of Malina-Wright - Ph. 538-1981 or 261-5588)

PASSION IN PARADISE!
FEATURING THE ALL MALE REVUE!
TUES. & FRI.
8-10 / \$3 cover, front tables extra \$2. No guys allowed until after show!

MONDAYS / Tequila Shots \$1.50 / New Talent!
WEDNESDAYS / 99¢ Drinks (9 pm-Midnight)
THURSDAYS / 5¢ BEER NITE
SUNDAYS / HENRY'S Draft \$1 Glass/\$2.50 Pitchers

FAST EDDIE'S
DRESS CODE

SATURDAY
1st NIGHT OF FAST EDDIE'S NEW "CRAZY" Competition
"THE SATURDAY NIGHT SPOTLIGHT"
Contestants Wear Headsets and Sing Along to Favorite Songs
Win CASH & PRIZES!
FINALS DECEMBER 1st!

IN KAILUA!
52 Onewawa St. / 261-8561

HONSPORT 63rd Anniversary Sale
Division of Oshman's Sporting Goods Inc.

Welder Olympic Weight Set 308 lb.
SAVE 34%
279⁹⁷
Reg. 425.00

BODY TONE 300
More than a rower — a deluxe multi-gym. Converts from a rower to a vertically positioned multi-gym.
Reg. 179.99
139⁹⁷
SAVE 23%

DP Multi-Action Exercise Bicycle
Reg. 179.95
129⁹⁷
SAVE 28%

40-in. Jogging Trampoline
Reg. 89.99
29⁹⁷
SAVE \$60.00

Vinyl Conditioning Suits, Elastic closures.
Reg. 15.99
12⁹⁷

PRO-MATE® Leather Skip Rope
Reg. 11.99
9⁹⁷

Nylon Skip Rope
Reg. 9.99
7⁹⁷

MacGregor 70 lb. Canvas Training Bag
Reg. 108.00
59⁹⁷

40 lb. Karate Bag
Reg. 72.00
39⁹⁷
SAVE 44%

AR-7 SPORTING/SURVIVAL RIFLE
Reg. 99.99
79⁹⁷

Tasco Binoculars 8X30 ZCF
#308 Reg. 39.99
29⁹⁷

Mach 7-7 Boogie Board
Reg. 79.99
59⁹⁷

AMF Kauai Mask
Reg. 23.99
18⁹⁹

AMF Hawai Mask
Reg. 21.99
16⁹⁹

SEVYLOR Two-Person Boat Kit. #KK54
Reg. 41.99
33⁹⁷

St. Pierre Horseshoe Set
Drop forged steel horseshoes, steel stakes, plus rules.
Reg. 27.99
21⁹⁷

DP Power Pro Tennis Racket
Reg. 79.99
44⁹⁹

St. Pierre Horseshoe Set
Drop forged steel horseshoes, steel stakes, plus rules.
Reg. 27.99
21⁹⁷

Wilson 1200 LT Pro Golf Clubs
Investment cast irons, fore-weighted woods for fine performance.
3 Woods ... Reg. 129.00 ... 104⁹⁷
8 Irons ... Reg. 269.00 ... 219⁹⁷

Pearlridge, 487-1517 • Windward Mall 247-8733 • Kailua Shopping Center 261-9751
Prices good thru Oct. 28, unless otherwise noted, while quantities last. Use your Visa, American Express, MasterCard.

Island Happenings

Cont. from Page B-3

law as it applies to special children; how to find out if your child needs help; how to problem-solve along the way; and who can assist you and how.

For reservations call PAC at 471-0552/0834. Seating is limited.

Honolulu Academy of Arts

"From Light to Image: The Art of Photography" is the topic of a lecture by University of Hawaii professor of art, Duane Preble, starting at 10 a.m. and 5 p.m. today. Tickets are \$3.50.

"The Fine Art of Collecting," and all-day workshop/conference on issues relating to private and public collections of art, begins at 9 a.m., Saturday. Afternoon sessions feature hands-on activities at Bishop Museum and a visit to artists' studios.

"Shame" (1967: Swedish with English subtitles), a seldom shown classic by director Ingmar Bergman about the effects of war on domestic life and romance, will be shown at 7:30 p.m., Saturday and Monday. Tickets are \$3.

Hsiao Hsi Yuan Puppet Troupe of Taiwan presents two complete plays — "General Kuan Covered Thousands of Miles on Horseback Alone" and "Char Kuangyin Overpowered the Unconquerable on the Peach Blossom Mountain" — at 3 p.m. Sunday and 8 p.m. Tuesday. The program is part of an American tour sponsored by the Michigan China Council (Asia Society) and the Chinese-American Educational and Cultural Center of

Michigan. Tickets are \$5, \$3 for students.

"Jewel Robbery" (1932) and "Lady by Choice" (1933), starring, respectively, charming sophisticates William Powell and Carole Lombard, will be shown in the "Film Buff's Corner" series at 7:30 p.m. Sunday. Tickets are \$2.50.

Pianist Jeffrey Swann, a top prize winner in every competition he has entered, presents a recital featuring works by Schubert, Debussy and Liszt on Wednesday at 8 p.m. Tickets are \$8, \$5 students.

SNCO wives installation dinner

The Staff NCO Wives Club will be holding their installation of officers dinner tomorrow at 6:30 p.m. at the club. Guest speaker will be SgtMaj. W. Trawick, MCAS Sergeant Major.

Anyone interested in joining the staff NCO or enlisted wives

club, contact Joann Molloy at 254-5697 or Linda Martin at 254-2768, or attend any of the monthly meetings held on the second Monday of every month at the SNCO Club.

Mokapu PTSA

Advance ticket sales for the Mokapu PTSA Special Services Halloween Carnival will end tomorrow. The tickets are 5 for \$1 in advance, 4 for \$1 at the door, and can be purchased

before and after school in front of the school office.

Aluminum cans will also be collected on Oct. 26 on the grass parking area before school. Bring the clean cans in a trash bag marked with the child's name and room number. Of course, donations of cans from those who do not have children in Mokapu are always welcomed.

Cont. on Page B-6

ACCIDENT CASES

INCLUDING
WRONGFUL
DEATH CLAIMS
AND
CATASTROPHIC INJURIES

You may qualify if you or any member of your family has been injured.

524-5400

Law Offices of
GARY GALIHER & ASSOCIATES

No Charge For Initial Consultation
No Recovery - No Fee

333 Queen Street, Suite 800 Validated Parking

PRE-INVENTORY SALE!! UP TO 50% OFF

ELECTRIC
CLASSICAL
BASS
FOLK GUITARS



PEAVEY T-45

REG. 543⁰⁰

SALE 399⁰⁰

HOHNER HGK-294

89⁰⁰

SALE 45⁰⁰

GIANNINI AWNE-6

200⁰⁰

SALE 99⁰⁰

VANTAGE - AVENGER

400⁰⁰

SALE 229⁰⁰

CORT

250⁰⁰

SALE 125⁰⁰

SAGA - 4140

99⁰⁰

SALE 49⁰⁰

CARLOS - 260

140⁰⁰

SALE 70⁰⁰

SEVILLE - S62

100⁰⁰

SALE 50⁰⁰

• GUITAR LESSONS AVAILABLE •
LAY-A-WAY PLAN/FLEXIBLE TERMS

SALE ENDS
NOV. 1st

"GIVE THEM THE GIFT OF MUSIC... AT THAYER'S"

HOURS: MON-FRI.

9:30 AM-6:00 PM

WED.

9:30 AM-9:00 PM

SAT.

9:30 AM-5:00 PM

1020 AWAHI STREET

Ample Free Parking PH. 536-6161



• Full line of musical instruments & accessories
• Largest selection of sheet music in Hawaii
• Used pianos from

\$695⁰⁰

The bonus you miss may be your own.

What a shame it would be to give up a \$3,298 to \$16,000 bonus just because you thought your MOS didn't rate one or the bonus money was gone? Because all the information you need to know is in this ad. The Ground MOSSs that are covered and the range of bonuses that are currently being offered are here for you to take advantage.

MOSSs 1345, 1371 and 3381 offer from \$3,298 to \$4,948. If you're in 1142, 3043 or 3521/22/23/24, the range is from \$9,894 to \$14,844. A range of \$6,596 to \$9,896 is being offered to Marines in MOSSs 1391 and 1833. A bonus of \$13,192 to \$16,000 is available to qualified Marines in MOS 2841. And MOSSs 084X, and 592X rate \$16,000.

These bonuses listed are for zone A Marines with the rank of corporal and at least 21 months of service completed but not more than 72 months at the time of reenlistment. And as you can see, the bonus money is substantial and worth getting.

So make your move now. Make sure you get what you have coming to you. If you need help and more information, your career planner has all the information at his fingertips. As you can see, a bonus is a real good incentive to stay Marine.

You can count on the Corps.



STAY MARINE.

See your Career Planner

You'll get straight talk. Answers to your questions. And a fair look at all the Corps has to offer.

HQCC 1st MAR BDE

SGT White

257-3607

3/3

SGT Jackson/SSGT Miclotto

257-3580

BSSG

GySgt Mendoza/SSGT Stinson

Sgt Ballzan

257-3127

MACS-2

SSgt Hosea

257-2995

VMFA-212

Sgt Doyle

257-2417

CommSptCo

Sgt Fernandez

257-3632

FmfPac

GySgt Blackwell

477-5090

HQCO 3D Mar

SSgt Alldredge

257-2758

1/12

SSgt Loftis

257-3225

MAG-24

GySgt Wrede

257-2285

HMM-165

Sgt Hughes

257-2436

VMFA-232

SSgt Pietrzak

257-3827

H&HS

SSgt Drost

257-2841

MARBKS HI

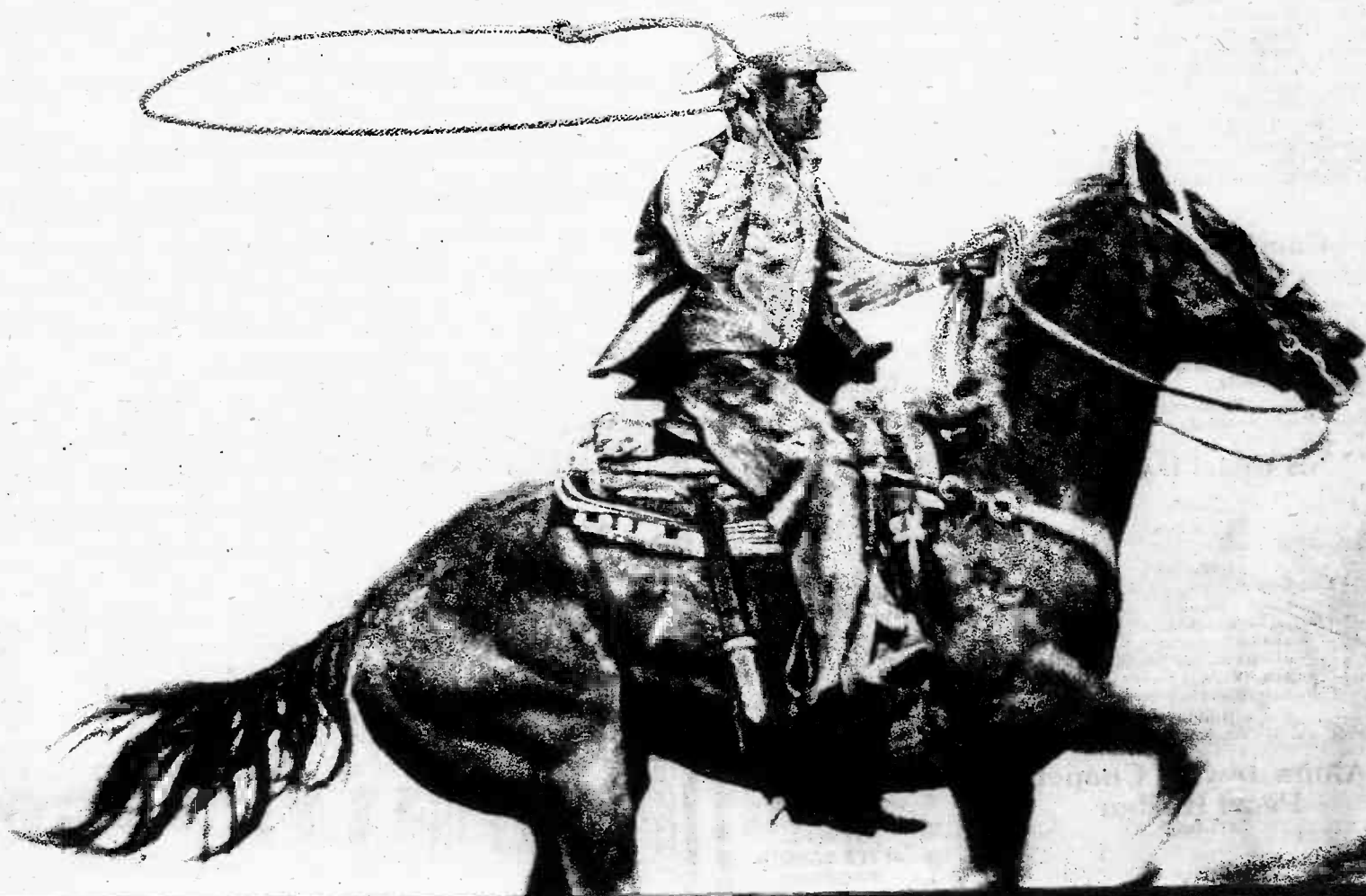
SSgt Hall

471-9518

Stay Marine.

October 18, 1984

The spirit of Marlboro in a low tar cigarette.



Marlboro Lights



Also available in Flip-Top[®] box.

Warning: The Surgeon General Has Determined
That Cigarette Smoking Is Dangerous to Your Health.

Kings & 100's: 11 mg "tar," 0.7 mg nicotine—Kings Box: 10 mg
"tar," 0.7 mg nicotine av. per cigarette, FTC Report Mar '84—
100's Box: 11 mg "tar," 0.7 mg nicotine av. per cigarette by FTC method.

Religious services schedule

MCAS Kaneohe Bay

257-3552/3506

- Weekdays**
11:45 a.m. — Catholic Mass
- Saturday**
6 p.m. — Catholic Mass
7 p.m. — Catholic Reconciliations
- Sunday**
7:30 a.m. — Catholic Mass
8:30 a.m. — Protestant Liturgical Communion
9:30 a.m. — Catholic Mass
9:30 a.m. — Protestant Sunday School
10:45 a.m. — Catholic CCD Classes
11 a.m. — Protestant Worship
1 p.m. — Samoan Congregation

The Station Chapel is located in the right rear corner of the Marine Corps Exchange, building 1090. Sunday School and CCD are held in the pre-school area, building 1391.

Camp H.M. Smith

477-5098

- Sunday**
8 a.m. — Catholic Mass
9:30 a.m. — Protestant Worship
9:30 a.m. — Protestant Sunday School
- Monday**
11:30 a.m. — Bible Study
- Wednesday**
6:45 a.m. — Prayer breakfast

NS Pearl Harbor

471-3971

- Weekdays**
11:30 a.m. — Daily Catholic Mass
- Saturday**
6 p.m. — Catholic Mass
- Sunday**
7:30 and 9:30 a.m. — Catholic Mass
8:30 a.m. — Protestant Communion Service
9:30 a.m. — Protestant Sunday School
11 a.m. — Protestant Worship Service
7 p.m. — Protestant Gospel Service
- Holidays**
11:30 and 5 p.m. — Catholic Mass

Aloha Jewish Chapel, Pearl Harbor

471-0050

- Friday**
8 p.m. — Shabat
- Saturday**
9:30 a.m. — Shabat and Torah Study
- Sunday**
9 a.m. to noon — Religious School

Island Happenings

Cont. from Page B-4

Upcoming classes

The following classes/activities are beginning soon.

Hawaiian Quilting — will be offered in November with classes scheduled for Friday mornings at 9:30.

Miniatures workshop — is scheduled for Nov. 6. The children's class will make gingerbread houses with candy canes; \$3 fee. The adult's class will make Christmas trees with skirts and ornaments; \$10 fee. Registration deadline is Oct. 30.

Aquatics class — will begin Nov. 5 and be held Mondays and Thursdays from 9 to 10 a.m. at the Station pool. The cost is \$2.50 per class and a free demonstration and introduction will be given Nov. 1 at 9 a.m.

Smocking — A class in smocking will be offered for beginners and advanced levels beginning Nov. 5. Classes will be held on Mondays at 9 a.m. and 7:30 p.m.; cost for the three-week session is \$20.

Hula — An eight-week session will begin Wednesday for children and Thursday for adults. Registration deadline is tomorrow, and it costs \$15 a

month.

Tahitian dance — A class is now forming; call for information.

Swimming — Lessons will be offered beginning Tuesday and classes will be held at the Station pool, Tuesday-Friday, from 3 to 5:30 p.m. Registration is 2 p.m. Saturday at the pool; cost is \$25.

Leis — The art of making Haku, Kui, Wili and PoePoe leis will be taught Friday from 9:30 a.m. to 2:30 p.m., and all flowers and materials will be provided. Fee is \$15 and the registration deadline is tomorrow.

Computers — A new computer class begins Nov. 4. Cost for the six-week session is \$20, with a special family rate of \$35.

Dolls — A soft sculpture doll class will begin Nov. 7 at 9 a.m. and 6:30 p.m. Cost is \$35.

For more information and to register call Dependent Recreation at 257-3501.

Concert tickets

Special Services Ticket Sales has information on Dancing and Romancing at the Ticket Sales Office, building 219, from 9 a.m. to 3:30 p.m., Monday through Friday.

Tickets for Menudo, REM and the Celebrity Masquerade Ball, with Tom Selleck and other celebrities, are also available.

A special attraction Nov. 7 for country and western fans is Charley Pride at Schofield Barracks.

A Flock of Seagulls will be appearing at the Andrews Amphitheater Nov. 17. Tickets are also available for this event.

OWC Iolani Palace Tour

The Kaneohe OWC will sponsor an Iolani Palace Tour on Nov. 7.

Carpools will form at 8:30 a.m. in the parking lot behind

the BOQ and depart at 8:45. The tour of the Palace begins at 10 a.m.

The cost is \$4 and reservation deadline is Oct. 27. Space is limited, so mail in your reservations now to JoAnn Biszak at 1756 Lawrence Road, Kailua, HI 96734. You may also drop off your reservation in the box located at the same address.

Give your name, telephone number, number of reservations, amount enclosed, and if you are willing to drive.

Family films

A five-part film series, "Creating Family Intimacy, Love and Sex," will begin Sunday and continue for five consecutive Sundays at 7 p.m. at the Station Chapel.

The series will begin by focusing on husband/wife relationships and continue on Oct. 28 with Creating Family; Nov. 4 — male/female crisis; Nov. 11 — Teens, Singles and Love vs. Sex; and Nov. 18 — Parents as Role Models.

INCREDIBLE—BUT TRUE

WE HAVE MOVED 400 FANS IN TWO WEEKS WITH THIS INCREDIBLE SALE. 100 FANS ARE LEFT AND MUST BE SOLD THIS WEEK. DON'T MISS OUT, THIS COULD BE THE BEST CEILING FAN OFFER IN THE COUNTRY.

BUY 1 GET 1 FREE!



30% OFF ALL LIGHT KITS!

2 FOR \$88 (35" 4 BLADE MOD. RB-26)
2 FOR \$118 (FLUSH MT. 32" SIERRA MOD. 880F)
2 FOR \$268 (32" SAN FRANCISCO 5 BLADE)

CASABLANCA • HUNTER • SAN FRANCISCO

on display for comparison only

PACIFIC SURPLUS & DISTRIBUTORS LTD.
MON. THRU FRI. 9:30-6:00 p.m. 262-8131
SATURDAY 9:30-5:00 p.m. 1247-F KAILUA RD. KAILUA
SUNDAY 11:00-5:00 p.m. 455-9010
THURS. CLOSED PEARL CITY

COUPON

HILLTOP RANCH

UNGUIDED TRAIL RIDES
BRING THIS COUPON FOR ONE FREE RIDE WITH GROUPS OF 4 OR MORE.

AFTER SCHOOL PROGRAM
8 WEEK SESSIONS
2, 3 OR 5 DAY PROGRAMS

RESERVATIONS:
259-8463

COUPON

Neck Pain? Backache?

Don't Suffer Needlessly!

Pacific Chiropractic

TRAINED IN 5 RECOGNIZED TECHNIQUES INCLUDING "LOW FORCE"



COMPLETE PHYSICAL EXAM

X-RAY FACILITIES

COMMON SYMPTOMS:
• BACK PAIN
• HEADACHES
• NECK PAIN
• ARM & LEG PAIN
• JOINT PAIN
• MUSCLE SPASMS
• NUMBNESS
• PINCHED NERVES

DR. JEANNE MICHAELS
R.N. DC.

SPECIALIZING IN:
• ON THE JOB INJURIES
• AUTO ACCIDENTS
• SPORTS INJURIES
• CHRONIC & DIFFICULT CASES
• GENERAL PRACTICE
• FAMILY CARE PLAN
• PERSONALIZED CARE

261-0831

602 KAILUA RD. NO. 207, KAILUA (between Cornet & Hardware Hawaii-2nd floor rear)
NO CHARGE FOR BRIEF SPINAL ANALYSIS

Fall Home Furnishing SALE!

Hurry to Pearl Harbor or Barbers Point Navy Exchanges and get the bargain you've been looking for at our Fall Home Furnishing Sale! Everything you need to turn your house into a home is on sale now! Get beautiful new floor-coverings or window treatments to add beauty and comfort to your home at these great savings! Plus, choose from our huge selection of styles, colors and fabrics! But at these low prices you'd better hurry for the best selection!



HORIZONTAL BLINDS
SAVE 44%

Over 45 beautiful colors to choose from! Get softly diffused light by day and complete privacy by night. These sleek, slim blinds are sturdy and easy to care for too!

SHEET VINYL
SAVE 25%

on Honolulu stock only. Perfect for your bathroom, kitchen, hallway or den! Durable and easy to care for, choose from a variety of colors and patterns — plus save 25%!

WALL TO WALL CARPET SPECIALS
Save up to \$14⁷⁰ per sq. yd.

Solid Saxony Cut Pile
Sug. Retail \$13.95
Save \$6.45

\$7⁵⁰ sq. yd.

Multitone Saxony Plush
Sug. Retail \$15.95
Save \$7.10

\$8⁸⁵ sq. yd.

Multicolor Sculpture Pile
Sug. Retail \$21.95
Save \$9.70

\$12²⁵ sq. yd.

Elegant Styled Sculpture
Sug. Retail \$27.95
Save \$12.45

\$15⁵⁰ sq. yd.

Multitone Sculpture
Sug. Retail \$15.95
Save \$7.70

\$8²⁵ sq. yd.

Lint Free Saxony Plush
Sug. Retail \$21.95
Save \$10.15

\$11⁸⁰ sq. yd.

Popular Luxurious Sculpture
Sug. Retail \$27.95
Save \$12.45

\$15⁵⁰ sq. yd.

Thick Saxony Cut Pile
Sug. Retail \$31.95
Save \$14.70

\$17²⁵ sq. yd.

Carpet only. Pad and professional installation available.

CUSTOM DRAPERY
SAVE 33%

You choose the fabric, color and style to perfectly accent your windows. We've got a huge selection to choose from now at these great savings!

VERTICAL BLINDS
SAVE 33%

Choose from hundreds of fabrics and textures to turn your windows into the elegant showcase you've always wanted them to be! Great for homes or offices!

Pearl Harbor Navy Exchange
Interiors Plus
Phone: 422-2767
422-2768
Regular Store Hours:
Mon-Sat 9:30 am to 7:00 pm
Sunday 9:30 am to 5:30 pm

Visa and Mastercard accepted
Sorry no layaways

Sale starts October 18, 1984
Sale ends October 28, 1984

Barbers Point Navy Exchange
Rainbow Annex Furniture Store
Bldg. 1141
Phone: 682-5525
Regular Store Hours:
Mon-Fri 10:00 am to 5:00 pm
Saturday 10:00 am to 4:00 pm
Sunday closed

NAVY Exchange PEARL

NAVY Exchange BARBERS PT.

This ad was not paid for by the Navy Exchange.

Come sing a song of Christmas with us!
Retailers and Advertisers Remember . . .
There Are Only 10 More Weeks Till Christmas!

Call Your Area

SUN PRESS Representative
235-5881



Monarch's Arnel Valbuena makes his way outside for a 15 yard gain. The Monarchs went on to score on the drive, leading the Generals 22-0 at the half.

Monarchs dump Generals

by Cpl. Pat Lewandowski

The Kaneohe Bay Generals failed to break a four-game losing streak when they were bested by the Kalakaua Monarchs, 38-0, in Youth Athletic Football action Saturday.

The Generals had problems dethroning the Monarchs since they dominated play almost scoring at will. The 1:35 lb. Midget Division game was played at Maunawili Elementary School before an enthusiastic morning crowd.

The Generals took the first possession of the game, but failed to produce any points. The offense couldn't get any momentum and was forced to punt.

The 25-yard punt put the Monarchs in good field position and they promptly marched down field for a touchdown. Jerry Ednilao added two points on the conversion with a sweep around the left side, making the score 8-0.

Joey Schwartz gave the Generals excellent field position on the ensuing

kickoff but they failed to take advantage of it and were forced to punt again. The punt was slowed by strong winds, giving the Monarchs another opportunity to score. They used two plays and 45 seconds to add another 6 points to the board.

The Generals defense stood tall on the goal line, however, and refused to give up any more points. The Kalakaua Monarchs walked away with a 14-0 lead near the end of the first quarter.

The wind was blowing in the Generals favor at the change of the quarter but they failed to produce any yards in the air. The fierce Monarch defense put pressure on General quarterback, Richard Laskowski, shutting down their offense.

The Monarchs used the last possession of the half to march down the field for a touchdown and extra points, giving them a commanding 22-0 lead.

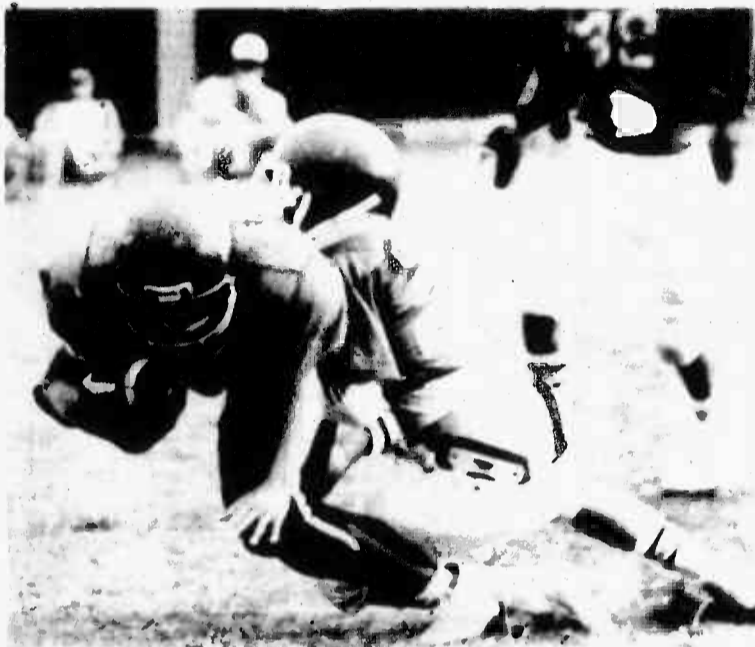
The second half was much of the same, as the Monarchs

marched down the field at will scoring another 16 points making the final tally 38-0. The win gave the Monarchs a 1-3 record, and the Generals kept their winless 0-5 record.

"We executed our plays poorly, but I can chalk that up to a lack of live-play experience," said General's coach, Don Galvin. "We have a small team and get little scrimmage time among ourselves; these kids don't practice the way I'd like them to."

"Sixty percent of my players play both offense and defense and they get tired and some have only played football this year," continued Galvin. "Individually, every boy made a play; if he does his job once in a game, it's worth being out here."

In other action, the Pee Wee Generals lost to the Waipahu Raiders 14-0, lowering their record to 1 tie and 3 losses. The Termites also lost Saturday to Ewa Beach 21-0. Their record stands at 1-3 for the season.



General's Thomas Rowland stops a Monarch ball carrier just short of the end zone. The Monarchs boosted their record to 1-3 with the 38-0 victory over the Generals.

Sportsnotes

Slow pitch softball

A unit slow pitch softball tournament will be held Saturday and Sunday at the Risley Field complex, with 20 teams competing. The all-day series of games begins at 8:30 a.m., both days.

All-Marine wrestling

All-Marine wrestling tryouts start Tuesday from 5 to 7 p.m., and will continue on every Tuesday and Thursday for several months.

Wrestlers of all abilities are encouraged to enter, and an assistant coach is also needed to help train and, in the near future, take over complete training responsibility for the team.

For more information contact Maj. Rocky Chavez at 257-3115/3206.

Volleyball tourney

A one-day pool play unit volleyball tournament will be held Oct. 28 at the Station gym. Sign up or call the Athletics office starting Monday. The unit coaches

meeting will be held at noon, Oct. 26, in the Station theater.

Bad Company 8, T-Birds 4.

Intramural basketball

The intramural basketball preseason starts Tuesday at 6 p.m. If your unit isn't already entered, contact Athletics.

Intramural programs are conducted after normal duty hours and on weekends to permit maximum participation. Units are encouraged to enter two or more teams whenever possible.

Women's softball

Scores posted in Women's Dependent Softball league action Sunday were:

Redball Express 5, Ten plus 4;
Ragdolls 4, Redball Express 0;
Lady Lites 2, Classy Chassis 1;
Wiki Wiki Wahines 10, Magic Rainbow 4;

WATER QUALITY EXCEPTIONS

On 2 October 1984, officials at Marine Corps Air Station, Kaneohe Bay learned that five of fifteen water quality samples of potable water taken on 1 October 1984, had positive coliform bacterium readings. The five locations and their respective coliform counts were as follows: Rifle Range - 3, Building 1387 at the Naval Ocean Systems Center - 87, Officers' Club pool - 6, Staff Noncommissioned Officers' Club kitchen - 21 and 2464 Cochran - 1. Although by law only those counts above 4 required subsequent samples, additional samples were taken at all five locations on 2 and 3 October 1984 as a precautionary measure. All locations except the Rifle Range, had 0 coliform readings from the samples taken on 2 and 3 October. The Rifle Range had a count too numerous to count from its 2 October sample and a count of 12 from its 3 October sample. As a result of the second consecutive positive reading at the Rifle Range officials secured the drinking water system at the Rifle Range about 1100 on 3 October 1984. The drinking system at the Rifle Range has since been returned to use.

The positive readings from the 1 October samples exceeded standards of the Safe Drinking Water Act in two ways: (1) the monthly average of samples resulted in a count of more than one colony of coliform per sample and (2) more than 5% of the samples had more than four colonies. Despite the aforementioned exceptions, officials at Marine Corps Air Station, Kaneohe Bay stressed the following:

1. There were negative check samples from four of the five positive sites during follow-up testing on 3 and 4 October. Hence, there is no concern over the quality of the drinking water at building 1387, the Officers' Club pool, the Staff Noncommissioned Officers' Club kitchen and at 2464 Cochran Street.

2. The potable water system at the Rifle Range was secured from 1100 on 3 October until 1100 on 11 October. Signs were posted warning personnel not to drink from the potable water system and water tanks were placed at three sites as a source of potable water during the period when the potable water system was secured.

3. Before the potable water system at the Rifle Range was returned to use, the system was superchlorinated, flushed thoroughly, and had two consecutive days with negative readings on 10 and 11 October.

4. From discussions with medical officers at Marine Corps Air Station, Kaneohe Bay there has been no higher incidence of gastrointestinal disorders, something which might occur if personnel were to be adversely affected.

Although there is no reason for alarm, this notice is being issued as a precautionary measure and because it is required by the Safe Drinking Water Act.

Birthday 10K

The Marine Corps Birthday 10K Fun Run will be held at 6:30 a.m. on Nov. 9.

Sign-up starts Nov. 2 at the Station Gym. T-shirts will be available at \$4 to participants after the race, near Dewey Square.

Chiropractic can show you the way to
FEEL LIKE A NEW PERSON...NATURALLY



Dr. Lawrence J. Connors, M.A., D.C.



Dr. Michael L. Clervo, D.C.

FAMILY CHIROPRACTIC CENTER, INC.

45-1144 KAM HWY., SUITE 200-200A

LOCATED IN HONOLULU FEDERAL SAVINGS & LOAN BLDG. 2nd FLOOR

OPEN 6 DAYS A WEEK
MON.-FRI. 8:00 AM-6:30 PM
SAT. 8:00 AM-1:30 PM
235-6677

Chiropractic Benefits

•THOROUGH EXAM
AND X-RAY

•CHIROPRACTIC
ADJUSTMENT

•SPINAL
REALIGNMENT

•EXERCISE
REGIMEN

•PHYSIOTHERAPY
Chiropractic can
revitalize you

Chiropractic's most important concern is the entire body. It deals with the relationship of nervous system, the brain and spinal column and their effect on the rest of your body.

Chiropractic for Athletic Injuries

Sports are here to stay, and so, unfortunately, are injuries that accompany them. A chiropractor can ease the aches and pains of spinal injuries with adjustment. Whether the pain is in your neck, back or somewhere else, a chiropractor can help you.

Vote for

 **LEDWARD,**
MASAKO HORIUCHI

BOARD OF EDUCATION (AT LARGE)



- Retired Public School Teacher
- CHAIR, Hawaii Educational Council
- COMMISSIONER, Educ. Commission of the States
- VICE CHAIR, Democratic Party of Hawaii

PAID FOR BY FRIENDS OF MASAKO LEDWARD
2455 Woodlawn Dr. Honolulu, HI 96822

HOUSES PART. FURN.

KAILUA 4 bdrm, 2 bath \$1150 a month. Near beach, no pets. Ph. 263-4273.

3 BDRM, 2 bath house, Equestrian Lake view \$1800. 6 bdrm, 3 bath, 2 car garage. Ph. 8-8 p.m. 261-1133.

DUPLICATE NEAR UH. 3 bath, covered water heating, carpeting, min. 192 sq. ft. ref. disposal, coin-op washer/dryer. \$1500 + util. Call 445-1136 Jim

KANELOHE 1 1/2 bath with view 3 bdrm, 2 bath suite, unit incl. Ph. 942-8759

CHOOSE one Aiea home \$490 1000 or 2 bdrm, Salt Lake \$525 yard 943-0092 Rent Mart

DEAL 2 bdrm, Kaneohe \$535 3 bdrm, 2 bath, Pearl City \$595 3 bdrm, 2 bath, 943-0092 Rent Mart

WAILUA: 1 bdrm, cottage, across beach, \$350 incl. util. 837-4367

HOUSE SITTING
MATURE dependable woman will care for your home, pets, plants, refs. Ph. 261-5267

CONDO/TOWNHOUSE PART. FURN.

MILILANI patio home, Opehale, 2 bdrm, 1 b, w/lot, high assumable at 10.5% \$116,000 fee. 621-7863

MAKAKOHI, 3 bdrm, 1 1/2 bath, new drapes, pool, parking \$780 mo. 623-0364, 347-5308

MILILANI townhouse, golf view, 3 bdrm, 2 bath, available Nov. 1. 623-0173 3 wks & weekends

ROOMS FOR RENT

WAIHANA 10 rms. bath, own entrance, no pets, refs. \$150 mo. units 622-2389

KANELOHE - master bdrm, w/lot & complete bath, \$1000. Non-smoker pref. 261-2494

WORKING single person, own room, share living space, private entrance, \$300 incl. util. deposit. Ph. 261-1478

LANIKAI Beach, no lot, to Cool/Open/Arise/Quel/Private 3 bdrm, 16500. 262-9119

KAILUA: rooms in beautiful custom home with view, pool, washer & dryer, units, all included only \$350 & \$300 a mo. Ph. 262-7435

RENTALS WANTED

KAILUA: cozy 1 bdrm, cottage or breezy 3 bdrm, home just steps to gorgeous sandy beach, clean & fresh. Avail. Oct. 18. TLA welcome. 261-2293

MOLOKAI Wave Crest, sleeps 4, pool, \$500, \$150 per week. Ph. 235-8699

NR. Castle Hono, 3 bdrm, house w/lot. Available now. Call 261-2603.

KAILUA: nr. beach room w/private bath, king bed, small ref. linens 262-5445.

RENTALS WANTED

KAHALU, Kaneohe, Kailua - Working couple with 2 children need 1 to 3 bedroom house w/yard by Dec. 1st. Excellent references. Handy & clean. To \$500/month. 293-5635.

BEAUTIFUL upgraded studio across from the ocean, great assumable loan at 9 1/2% low mo. payments. Kasewa Dawn Soderquist (RA) 521-0351. Locations MLS 51368 LH

KANELOHE: completely remodeled 2 bdrm, 2 bath home w/own carpeting & many extras \$139,000 Lease. MLS52383 Noe Petre Properties 486-5040 or 621-9334

WAIHANA: highly upgraded 3 bdrm, home w/ceramic tile entry, plush beige carpeting, custom drapes. Large liv. rm. addition. Desirable location on a cul-de-sac street. FEE M/Snow Don't Miss Out! Call Noe Petre Properties 621-9334, 486-5040

WAIHANA: Pokena Bay Marina. Your chance to own immaculate fully furn. unit at low price. Secure water-front building, ocean & mountain views. Call now to see: Wendy Lawson (R) 261-4371 Dicks & Jacobs Inc.

LOW OR NO DOWN
Home or VA New Loan. Payments like rent. Choice of 2 or 3 bdrm. down home or apt. near SCHOFIELD/WHEELER in KIRKLAND.
Priced from \$85,250
Don't Miss! Call Today!
SHERLOCK HOLMES REALTY
234-1100 or 254-2770

181 PET SUPPLIES
SALES & SERVICE

ADORABLE AKC standard Dachshund, female, 6 months old, healthy \$175, 254-3708

120 FURNITURE

FREE PICKUP
CASH \$
for good used furniture
Rattan, wicker & beds
261-8492 or
261-1406

QUEEN Size Sofabed \$175
solid papers, good cond.
254-3490

FOR SALE: 7' couch & matching loveseat, gold floral print \$75. Ph. 458-1806

3 CHEST of drawers; gas BBQ; books & other miscellaneous. Call 261-6211, 946-1738

OPEN WEEKDAYS 11:00 a.m. - 5:00 p.m.

USED FURNITURE
Large selections of quality home furnishings at low prices. Come browse! 3165 Nimitz Hwy. (between Holiday Inn & Culler Dodge). Call 834-1080.

DREXEL desk \$65; dresser \$65; tables - coffee \$45, end \$25, corner \$30, dining & 6 chairs \$195; bookcase \$30; server \$45; hideabed \$85; student desk \$40. Ph. 247-1243

REWARD
to find furniture in good condition. Will pay \$1000 and pick up. Call 486-1883

120 FURNITURE

FREE PICKUP
CASH \$
for good used furniture
Rattan, wicker & beds
261-8492 or
261-1406

QUEEN Size Sofabed \$175
solid papers, good cond.
254-3490

FOR SALE: 7' couch & matching loveseat, gold floral print \$75. Ph. 458-1806

3 CHEST of drawers; gas BBQ; books & other miscellaneous. Call 261-6211, 946-1738

OPEN WEEKDAYS 11:00 a.m. - 5:00 p.m.

USED FURNITURE
Large selections of quality home furnishings at low prices. Come browse! 3165 Nimitz Hwy. (between Holiday Inn & Culler Dodge). Call 834-1080.

DREXEL desk \$65; dresser \$65; tables - coffee \$45, end \$25, corner \$30, dining & 6 chairs \$195; bookcase \$30; server \$45; hideabed \$85; student desk \$40. Ph. 247-1243

REWARD
to find furniture in good condition. Will pay \$1000 and pick up. Call 486-1883

120 FURNITURE

FREE PICKUP
CASH \$
for good used furniture
Rattan, wicker & beds
261-8492 or
261-1406

QUEEN Size Sofabed \$175
solid papers, good cond.
254-3490

FOR SALE: 7' couch & matching loveseat, gold floral print \$75. Ph. 458-1806

3 CHEST of drawers; gas BBQ; books & other miscellaneous. Call 261-6211, 946-1738

OPEN WEEKDAYS 11:00 a.m. - 5:00 p.m.

USED FURNITURE

Large selections of quality home furnishings at low prices. Come browse! 3165 Nimitz Hwy. (between Holiday Inn & Culler Dodge). Call 834-1080.

DREXEL desk \$65; dresser \$65; tables - coffee \$45, end \$25, corner \$30, dining & 6 chairs \$195; bookcase \$30; server \$45; hideabed \$85; student desk \$40. Ph. 247-1243

REWARD
to find furniture in good condition. Will pay \$1000 and pick up. Call 486-1883

120 FURNITURE

FREE PICKUP
CASH \$
for good used furniture
Rattan, wicker & beds
261-8492 or
261-1406

QUEEN Size Sofabed \$175
solid papers, good cond.
254-3490

FOR SALE: 7' couch & matching loveseat, gold floral print \$75. Ph. 458-1806

3 CHEST of drawers; gas BBQ; books & other miscellaneous. Call 261-6211, 946-1738

OPEN WEEKDAYS 11:00 a.m. - 5:00 p.m.

USED FURNITURE

Large selections of quality home furnishings at low prices. Come browse! 3165 Nimitz Hwy. (between Holiday Inn & Culler Dodge). Call 834-1080.

DREXEL desk \$65; dresser \$65; tables - coffee \$45, end \$25, corner \$30, dining & 6 chairs \$195; bookcase \$30; server \$45; hideabed \$85; student desk \$40. Ph. 247-1243

REWARD
to find furniture in good condition. Will pay \$1000 and pick up. Call 486-1883

120 FURNITURE

FREE PICKUP
CASH \$
for good used furniture
Rattan, wicker & beds
261-8492 or
261-1406

QUEEN Size Sofabed \$175
solid papers, good cond.
254-3490

FOR SALE: 7' couch & matching loveseat, gold floral print \$75. Ph. 458-1806

3 CHEST of drawers; gas BBQ; books & other miscellaneous. Call 261-6211, 946-1738

OPEN WEEKDAYS 11:00 a.m. - 5:00 p.m.

USED FURNITURE

Large selections of quality home furnishings at low prices. Come browse! 3165 Nimitz Hwy. (between Holiday Inn & Culler Dodge). Call 834-1080.

DREXEL desk \$65; dresser \$65; tables - coffee \$45, end \$25, corner \$30, dining & 6 chairs \$195; bookcase \$30; server \$45; hideabed \$85; student desk \$40. Ph. 247-1243

REWARD
to find furniture in good condition. Will pay \$1000 and pick up. Call 486-1883

120 FURNITURE

FREE PICKUP
CASH \$
for good used furniture
Rattan, wicker & beds
261-8492 or
261-1406

QUEEN Size Sofabed \$175
solid papers, good cond.
254-3490

FOR SALE: 7' couch & matching loveseat, gold floral print \$75. Ph. 458-1806

3 CHEST of drawers; gas BBQ; books & other miscellaneous. Call 261-6211, 946-1738

OPEN WEEKDAYS 11:00 a.m. - 5:00 p.m.

USED FURNITURE

Large selections of quality home furnishings at low prices. Come browse! 3165 Nimitz Hwy. (between Holiday Inn & Culler Dodge). Call 834-1080.

DREXEL desk \$65; dresser \$65; tables - coffee \$45, end \$25, corner \$30, dining & 6 chairs \$195; bookcase \$30; server \$45; hideabed \$85; student desk \$40. Ph. 247-1243

REWARD
to find furniture in good condition. Will pay \$1000 and pick up. Call 486-1883

120 FURNITURE

FREE PICKUP
CASH \$
for good used furniture
Rattan, wicker & beds
261-8492 or
261-1406

QUEEN Size Sofabed \$175
solid papers, good cond.
254-3490

FOR SALE: 7' couch & matching loveseat, gold floral print \$75. Ph. 458-1806

3 CHEST of drawers; gas BBQ; books & other miscellaneous. Call 261-6211, 946-1738

OPEN WEEKDAYS 11:00 a.m. - 5:00 p.m.

USED FURNITURE

Large selections of quality home furnishings at low prices. Come browse! 3165 Nimitz Hwy. (between Holiday Inn & Culler Dodge). Call 834-1080.

DREXEL desk \$65; dresser \$65; tables - coffee \$45, end \$25, corner \$30, dining & 6 chairs \$195; bookcase \$30; server \$45; hideabed \$85; student desk \$40. Ph. 247-1243

REWARD
to find furniture in good condition. Will pay \$1000 and pick up. Call 486-1883

120 FURNITURE

FREE PICKUP
CASH \$
for good used furniture
Rattan, wicker & beds
261-8492 or
261-1406

QUEEN Size Sofabed \$175
solid papers, good cond.
254-3490

FOR SALE: 7' couch & matching loveseat, gold floral print \$75. Ph. 458-1806

3 CHEST of drawers; gas BBQ; books & other miscellaneous. Call 261-6211, 946-1738

OPEN WEEKDAYS 11:00 a.m. - 5:00 p.m.

USED FURNITURE

Large selections of quality home furnishings at low prices. Come browse! 3165 Nimitz Hwy. (between Holiday Inn & Culler Dodge). Call 834-1080.

DREXEL desk \$65; dresser \$65; tables - coffee \$45, end \$25, corner \$30, dining & 6 chairs \$195; bookcase \$30; server \$45; hideabed \$85; student desk \$40. Ph. 247-1243

REWARD
to find furniture in good condition. Will pay \$1000 and pick up. Call 486-1883

120 FURNITURE

FREE PICKUP
CASH \$
for good used furniture
Rattan, wicker & beds
261-8492 or
261-1406

QUEEN Size Sofabed \$175
solid papers, good cond.
254-3490

FOR SALE: 7' couch & matching loveseat, gold floral print \$75. Ph. 458-1806

3 CHEST of drawers; gas BBQ; books & other miscellaneous. Call 261-6211, 946-1738

OPEN WEEKDAYS 11:00 a.m. - 5:00 p.m.

USED FURNITURE

Large selections of quality home furnishings at low prices. Come browse! 3165 Nimitz Hwy. (between Holiday Inn & Culler Dodge). Call 834-1080.

DREXEL desk \$65; dresser \$65; tables - coffee \$45, end \$25, corner \$30, dining & 6 chairs \$195; bookcase \$30; server \$45; hideabed \$85; student desk \$40. Ph. 247-1243

REWARD
to find furniture in good condition. Will pay \$1000 and pick up. Call 486-1883

120 FURNITURE

FREE PICKUP
CASH \$
for good used furniture
Rattan, wicker & beds
261-8492 or
261-1406

QUEEN Size Sofabed \$175
solid papers, good cond.
254-3490

FOR SALE: 7' couch & matching loveseat, gold floral print \$75. Ph. 458-1806

3 CHEST of drawers; gas BBQ; books & other miscellaneous. Call 261-6211, 946-1738

OPEN WEEKDAYS 11:00 a.m. - 5:00 p.m.

USED FURNITURE

Large selections of quality home furnishings at low prices. Come browse! 3165 Nimitz Hwy. (between Holiday Inn & Culler Dodge). Call 834-1080.

DREXEL desk \$65; dresser \$65; tables - coffee \$45, end \$25, corner \$30, dining & 6 chairs \$195; bookcase \$30; server \$45; hideabed \$85; student desk \$40. Ph. 247-1243

REWARD
to find furniture in good condition. Will pay \$1000 and pick up. Call 486-1883

120 FURNITURE

FREE PICKUP
CASH \$
for good used furniture
Rattan, wicker & beds
261-8492 or
261-1406

QUEEN Size Sofabed \$175
solid papers, good cond.
254-3490

FOR SALE: 7' couch & matching loveseat, gold floral print \$75. Ph. 458-1806

3 CHEST of drawers; gas BBQ; books & other miscellaneous. Call 261-6211, 946-1738

OPEN WEEKDAYS 11:00 a.m. - 5:00 p.m.

USED FURNITURE

Large selections of quality home furnishings at low prices. Come browse! 3165 Nimitz Hwy. (between Holiday Inn & Culler Dodge). Call 834-1080.

DREXEL desk \$65; dresser \$65; tables - coffee \$45, end \$25, corner \$30, dining & 6 chairs \$195; bookcase \$30; server \$45; hideabed \$85; student desk \$40. Ph. 247-1243

REWARD
to find furniture in good condition. Will pay \$1000 and pick up. Call 486-1883

120 FURNITURE

FREE PICKUP
CASH \$
for good used furniture
Rattan, wicker & beds
261-8492 or
261-1406

QUEEN Size Sofabed \$175
solid papers, good cond.
254-3490

FOR SALE: 7' couch & matching loveseat, gold floral print \$75. Ph. 458-1806

3 CHEST of drawers; gas BBQ; books & other miscellaneous. Call 261-6211, 946-1738

OPEN WEEKDAYS 11:00 a.m. - 5:00 p.m.

USED FURNITURE

Large selections of quality home furnishings at low prices. Come browse! 3165 Nimitz Hwy. (between Holiday Inn & Culler Dodge). Call 834-1080.

DREXEL desk \$65; dresser \$65; tables - coffee \$45, end \$25, corner \$30, dining & 6 chairs \$195; bookcase \$30; server \$45; hideabed \$85; student desk \$40. Ph. 247-1243

REWARD
to find furniture in good condition. Will pay \$1000 and pick up. Call 486-1883

120 FURNITURE

FREE PICKUP
CASH \$
for good used furniture
Rattan, wicker & beds
261-8492 or
261-1406

QUEEN Size Sofabed \$175
solid papers, good cond.
254-3490

FOR SALE: 7' couch & matching loveseat, gold floral print \$75. Ph. 458-1806

3 CHEST of drawers; gas BBQ; books & other miscellaneous. Call 261-6211, 946-1738

OPEN WEEKDAYS 11:00 a.m. - 5:00 p.m.

USED FURNITURE

Large selections of quality home furnishings at low prices. Come browse! 3165 Nimitz Hwy. (between Holiday Inn & Culler Dodge). Call 834-1080.

DREXEL desk \$65; dresser \$65; tables - coffee \$45, end \$25, corner \$30, dining & 6 chairs \$195; bookcase \$30; server \$45; hideabed \$85; student desk \$40. Ph. 247-1243

REWARD
to find furniture in good condition. Will pay \$1000 and pick up. Call 486-1883

120 FURNITURE

FREE PICKUP
CASH \$
for good used furniture
Rattan, wicker & beds
261-8492 or
261-1406

QUEEN Size Sofabed \$175
solid papers, good cond.
254-3490

FOR SALE: 7' couch & matching loveseat, gold floral print \$75. Ph. 458-1806

3 CHEST of drawers; gas BBQ; books & other miscellaneous. Call 261-6211, 946-1738

OPEN WEEKDAYS 11:00 a.m. - 5:00 p.m.

USED FURNITURE

Large selections of quality home furnishings at low prices. Come browse! 3165 Nimitz Hwy. (between Holiday Inn & Culler Dodge). Call 834-1080.

DREXEL desk \$65; dresser \$65; tables - coffee \$45, end \$25, corner \$30, dining & 6 chairs \$195; bookcase \$30; server \$45; hideabed \$85; student desk \$40. Ph. 247-1243

REWARD
to find furniture in good condition. Will pay \$1000 and pick up. Call 486-1883

171 MOTORCYCLES
SALES & SERVICE

'77 YAMAHA 400, like new with only 6,000 actual miles. \$650. Call Ken, 261-4854 or 235-5883.

'79 KAWASAKI KZ1000, 25,000 miles, excl. cond. \$2,000. Call AWH 923-9275. DVMH Maj. Howard 257-3476.

'81 HONDA CM400E, clean, like new, spare parts, many extras \$950. 450-1490 evans.

172 AUTOS FOR LEASE

THRIFTY Rent A Car is offering "Golden Oldies" from \$75 per week. \$225 per month. Ph. 836-2388.

FOH Rent pickup truck \$18.50 a day. Call 235-5778.

173 AUTO ANNOUNCEMENTS

WILL Detail your vehicle interior/exterior, compound, waxing, clear coating for complete new shine. 395-6812.

'84 HONDA CB750K \$1800. Firm. Call 474-8137 work or 487-5338 home.

174 RENT A CAR

CAR RENTALS
Admiral R-A-C!

2849 Kukumoku St. in our new location where we can serve your needs better.

Offering Low Daily/Weekly/Monthly Rates — starting \$11.95 daily while they last. Only 5 min. from airport & Tripler, featuring Free Pickup from airport & most military installations in the area.

836-6886 or 836-7796

175 VANS, CAMPERS & JEeps

'84 VW Van \$500 or best offer. Call 487-3425 after 6 p.m.

176 AUTOS FOR SALE

I HAVE transportation cars. '76 Mercury Monarch & '80 Plymouth Horizon. \$250 & up. Ph. 388-6668, 682-1395.

DAHU LEASING & USED CARS

'75 Granada \$495
'73 Cutlass Supreme \$795
'75 Ford LTD \$795
'77 Datsun 210 \$1295
'77 Pontiac wagon \$1595
'78 Chevy 1/2 Ton P/U \$3595

967 Kapiolani Blvd. 967-1220 • 967-3477

AMC

'74 AMC Hornet Wagon, auto, p/s, best offer. 239-9234.

BUICK

'73 BUICK Century loaded with extras, good shape. Call 247-3938.

'82 Riviera \$10,775

1 owner, pure elegance (ATV367)
J.N. CHEVROLET/MAZDA
836-1222 2999 N. Nimitz Hwy.

CADILLAC

'71 CADILLAC Seville \$550. Call 474-8137 work 487-5337 home.

LOTS OF CADILLACS

'79 Cad. Limo \$15,975
'79 Cad. Eldorado \$8975
'79 Cad. Limo \$16,500
'66 Cad. Fleetwood \$1275

J.N. CHEVROLET/MAZDA
836-1222 2999 N. Nimitz Hwy.

CLASSICS

'56 T-BIRD restored near "mint" by Vintage Cars. Air, cont.-kit, portfolios, wht. turquoise inter. trim as orig. Great showcar for wife/companion, self. See list 732-1024.

CHEVROLET

'71 MALIBU 4dr. family car. Excl. engine, good tires, brakes, mufflers, transportation. \$575. 732-1024.

HAWAIIAN ISLE

Used Cars
'81 Chevette \$2395
Auto, 4 dr., good tires, clean in & out. Lic. BEA783
Financing Available O.A.C.
3103 N. Nimitz Hwy.
836-1754

DOLLAR

CAR SALES
We Want Your Business!
CHOOSE FROM OUR GREAT SELECTION OF CARS LIKE THESE
'81 Chevy Citation

\$2495
PRICED TO SELL!
926-4256
Down Payment Drive (near Airport)

GOING TO OREGON to buy a new car or pickup?

—contact—
ROBERTS & REDFIELD
PORTLAND
Write for price lists and full information.
ANY MAKE • ANY MODEL
Delivered — road tested at Portland International Airport
ROBERTS & REDFIELD
Suite #102
8620 N.E. 82nd
Portland, Oregon
97220
(503) 257-0551
Conveniently located just 3 minutes from Airport!

CHEVROLET

'84 CELEBRITY (#3801) \$9975
8 passenger wagon, V6 auto, front wheel drive, power steering/brakes/door locks, air cond. & more.
J.N. CHEVROLET/MAZDA
836-1222 2999 N. Nimitz Hwy.

DATSUN

'76 DATSUN 210 4 dr., 5 spd., good cond., \$1600/best offer 833-7420.

'71 DATSUN 510, 4 dr., AM/FM cassette, good cond., \$900. Call 247-8160.

'82 DATSUN B210, 2 dr., 5 spd., excl. cond., \$3000. Call 262-6195 or 261-2203.

'77 DATSUN, runs great, AM/FM case, \$1500 or best offer. (H) 871-2496, (W) 684-9283 ask for Dave Beauchemin.

1971 DATSUN 1200 4 spd., AM/FM tape, rebuilt engine, many new parts \$500 ph. Taylor 261-8267 or 526-2336.

'73 DATSUN wagon, a/c, new tires, case, player, good cond., \$550. (H) 623-5693 (W) 655-0588.

DODGE

'75 DODGE Coronet, very good condition. Call 735-4693.

'71 DODGE many new parts runs good, looks bad \$125. Call 235-4002.

'77 DODGE 6 cyl., a/c, good cond., auto, trans., 4 door. \$2500. Ph. 623-3966.

DODGE

'80 OMNI \$2475
4 spd. hatchback (JH5492)
J.N. CHEVROLET/MAZDA
836-1222 2999 N. Nimitz Hwy.

FORD

'70 FORD Fairlane 2 dr., good cond., rebuilt trans., \$700/off. for 833-7420.

'79 THUNDERBOLT loaded AM/FM cassette, good cond., gray & red \$2100 or best offer 833-7420.

'84 BRONCO II-XLT 4X4, a/c, manual trans., AM/FM stereo, Super \$13,500 offer. 623-9196.

'79 PINTO, excl. cond., no rust \$1500/best offer. Call 261-7193.

HONDA

'83 HONDA Accord, 5 spd., 15,000 mi., sun roof, good cond., \$7750/off. 263-4288.

'85 HONDAS NOW AT TONY HONDA PEARLRIDGE

98-057 Kam Hwy 487-5599

HONDA

'76 HONDA Civic, new clutch, runs good. Best offer. 239-9234.

'84 HONDA Accord LX. Assume payments Save \$400! off dealer price. Call for details. 495-1983.

'81 Civic \$3475
2 dr., 4 spd., clean (BF8635)
J.N. CHEVROLET/MAZDA
836-1222 2999 N. Nimitz Hwy.

MAZDA

'76 MAZDA wagon, 4 spd., peppy. Good transportation. \$600/off. 235-5424.

'83 RX7, low mileage, 7800, a/c, AM/FM, mags, car cover, 5 spd., rustproofed, \$9750. 524-0034 or 988-7649.

LOTS OF USED MAZDAS

RX7 GLC. 626
'79 GLC. \$2475
Wagon auto, clean (BF0080)
J.N. CHEVROLET/MAZDA
836-1222 2999 N. Nimitz Hwy.

MERCEDES

'80 450SEL \$26,975
Luxuriously accessorized wall paper incl sunroof. AM/FM cassette, leather seats, alloy wheels, leather. (ASC428) NO DOWN LONG TERM FINANCING O.A.C.
J.N. CHEVROLET/MAZDA
836-1222 2999 N. Nimitz Hwy.

MG

'78 Midget \$975
convertible 4 spd., AM/FM cassette requires some work (AFN724)
J.N. CHEVROLET/MAZDA
836-1222 2999 N. Nimitz Hwy.

MERCURY

'73 MERCURY Montego 2 dr., loaded, good running cond., \$1400/off. for 833-7420.

LEAVING Island Must Sell! '78 Montego 6 cyl., auto, p/s, air cond., tilt wheel, AM/FM 8-track, tinted windows, clock & more. \$2300. Call anytime 624-4306.

HAWAIIAN ISLE

Used Cars
'81 Mercury Lynx 4 spd., AM Radio, Clean Car. Super Deal Lic. #BB8822 \$2495
Financing Available O.A.C.
3103 N. Nimitz Hwy.
836-1754

'82 Capri \$5275

2 dr. (AT8004) 6 cyl., auto steering, air, stereo
J.N. CHEVROLET/MAZDA
836-1222 2999 N. Nimitz Hwy.

TOYOTA

'73 COROLLA SR5, fair condition \$2000/off. call 671-1083 Aaron.

'78 TOYOTA Corolla, good running condition \$1500. Call 235-4129.

LOTS OF TOYOTAS

Celica, Corolla, Corona, Tercel
'78 Celica (AA074) \$2975
Limbo, auto, sharp
J.N. CHEVROLET/MAZDA
836-1222 2999 N. Nimitz Hwy.

OLDSMOBILE

'78 CUTLASS Supreme, good condition, low mileage, \$2000. Ph. 523-3747 after 4 p.m.

PLYMOUTH

'71 PLYMOUTH Valiant Slant 6, good cond., \$500. David 262-4324.

'81 PLYMOUTH Champ, perfect condition, AM/FM case, \$3200 or best offer. (H) 671-2496 (W) 684-9283 ask for Dave Beauchemin.

PONTIAC

'78 Firebird \$2975
Tag - at the top (BF5807)
J.N. CHEVROLET/MAZDA
836-1222 2999 N. Nimitz Hwy.

TOYOTA

'73 COROLLA SR5, fair condition \$2000/off. call 671-1083 Aaron.

'78 TOYOTA Corolla, good running condition \$1500. Call 235-4129.

LOTS OF TOYOTAS

Celica, Corolla, Corona, Tercel
'78 Celica (AA074) \$2975
Limbo, auto, sharp
J.N. CHEVROLET/MAZDA
836-1222 2999 N. Nimitz Hwy.

VOLKSWAGEN

'73 VW Super Beetle, excl. engine & tires. \$2000. Call 254-1305.

'73 VW Bug, good condition \$1500 or best offer. Call 668-1696.

1972 VW BUG — No Engine. Parts or whole — Make offer 261-2560.

'70 BUG, clean, rebuilt eng./int., AM/FM case, oversized radials \$2500. 262-8954.

'69 VW Squareback, 261-0090.

'74 Bug \$1975
4 spd., sportabout (BCP728)
J.N. CHEVROLET/MAZDA
836-1222 2999 N. Nimitz Hwy.

VOLVO

'84 VOLVO station wagon, fully equipped, \$17,000. Call 526-6062.

'71 VOLVO Station Wagon, new paint, tires, stereo, runs good \$1200/off. 946-7168.

CUTTER FORD

TRANSPORTATION SPECIALS

'69 COUGAR \$395
'73 TORINO \$495
'76 AMC \$595
'71 DUSTER \$695
'72 MONTEGO \$695
'75 TOYOTA \$795
'73 FIESTA \$795
'73 DATSUN P/U \$895
'71 VOLVO \$995

Oct. 18, 19, 20

98-015 Kam Hwy., AIEA • Ph: 487-3811

WAIPAHU SHELLY MAZDA

No Down O.A.C. 100% Financing Available

'74 DART \$1295
4 dr. auto
AE1253

'81 CHEVETTE \$2495
auto, good, clean
transportation AWU777

'79 RX7 \$4895
5 spd., clean
BCP405

'79 DATSUN \$1595
3 dr. super deal ANR146

'80 AMC \$2795
4 dr. auto, a/c, 6 cyl.
MOP862

'82 MALIBU \$4995
4 dr. auto, a/c, 6 cyl.
80J358

'75 DATSUN P/U \$1695
auto, runs great
ACP917

'80 SUZUKI 4X4 \$4195
new brakes
MBP932

'81 MAZDA 626 LX \$5495
2 dr. auto, sunroof
ATE254

'79 RABBIT \$1895
4 dr. 4 spd., 22,000 miles
AAB828

'81 FORD Van \$4695
6 cyl. auto
913TCG

'82 CHEVY Sport Van \$8395
7 pass., a/c
8VN709

94-212 Leoku St., Waipahu 677-0761

Offer Good Till Oct. 24

OPENING SALE! HAWAIIAN ISLE

Used Cars
Call 836-1754

'78 Pinto \$695
Auto, 4 cyl., nice transportation car
Lic. #AFK970

'79 Honda S/W \$2495
4 spd., AM Radio, Door Tires,
New Paint! Super Clean in & Out
Must See Lic. #AKC057

'81 Subaru \$2595
4 spd., AM Radio, Clean Car,
Lic. #BEW081

'79 Mustang \$2695
4 spd., a/c, AM radio, Sharp Car
Lic. #BING017

Many More Cars to Choose From
Financing Available On Approved Credit
3103 N. Nimitz Hwy., Honolulu
Prices good thru Oct. 31, 1984

'76 OLDS Cutlass Supreme \$1295

auto, V8, p/s, p/b, AM/FM, AXX767

'77 HONDA Civic \$1495
2 dr., 4 spd., AM/FM case, AA280

'72 TOYOTA Pickup \$1595
auto, 4 cyl., AA731

'76 CHEVY Monte Carlo \$1695
auto, AM/FM case, p/w, ASY018

'80 DATSUN Pickup \$2495
5 spd., AM/FM case, ANA321

'83 JEEP CJ7 \$7495
4 spd., 4 cyl., BW565

Offer good Oct. 18 thru Oct. 24

PEARLHARBOR

AMC/Jeep

Waipahu We buy cars too! 677-0709

CUTTER DODGE

AIRPORT

'66 Valiant \$195
Wgn. ADV811

'68 Montego \$295
AYAB10

'74 Ventura \$395
BCJ268

'73 Maverick \$395
AGG141

'71 Scamp \$495
ADJ065

'75 Starfire \$595
BNG981

'71 Bug \$1395
AVUR31

'73 Cutlass Supreme \$1395
DNA90h

'74 Cutlass Supreme \$1395
ATN655

'77 Honda \$1495
Wgn. A1X619

'77 Cordoba \$1795
AKA100

'72 GMC \$1895
Pickup BSS627

'77 Granada \$1995
BSF533

'70 Monte Carlo \$2195
ANT060

'79 Datsun \$2495
B210 APV479

'77 Camaro \$2795
BSW789

'78 Celica \$2995
RTSD46

'82 Chevette \$3195
AVB908

'78 T&T \$3795
AWB561

'79 Accord \$3995
ARF112

'81 Tercel \$4395
BCS445

'83 400 Convertible \$8595
BWP689

Prices good through Oct. 22, 1984
Your Only Intown Dodge Dealer
3149 NIMITZ HWY.
836-0626

OUR CUSTOMERS... OUR FRIENDS

TONY HONDA

PEARLRIDGE

'74 MUSTANG \$695
Hatchback (APP307)

'75 DATSUN \$795
2 dr. auto, radio (ACC878)

'76 HONDA Civic \$795
std. radio (AEX115)

'75 OLDS Omega \$1195
2 dr. hatchback, std. radio (AAR211)

'77 HONDA Civic \$1295
(AAT031)

'78 DODGE Aspen \$1295
7 dr. auto, clean (ESP578)

'77 DATSUN B210 \$1495
2 dr. hatchback, std. (BSJ808)

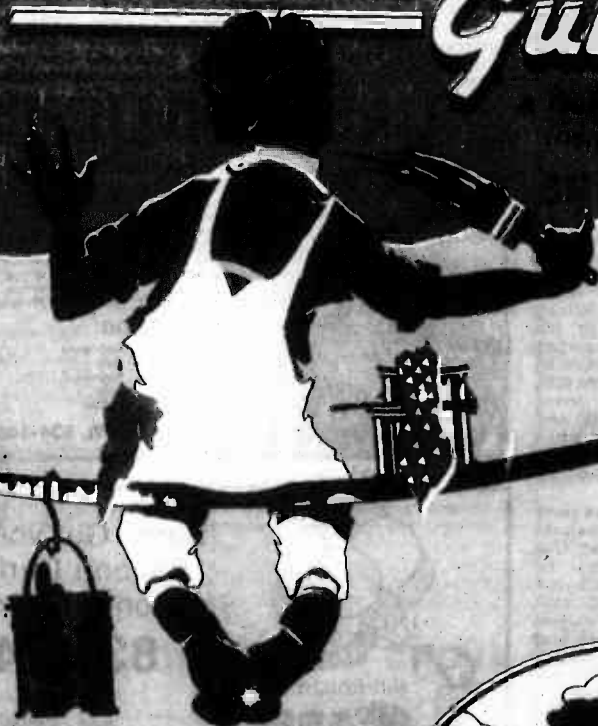
'73 VW Bug \$1595
std. (ABE929)

'77 AUDI Fox \$1595
4 dr. auto, radio (ABV074)

'77 MAZDA GLC \$1695
2 dr. (ADY376)

'79 T-BIRD \$2195
loaded (ATY109)

Fall IMPROVEMENT Guide



Advertising supplement to the Windward Sun Press, Hawaii Marine, Sun-Flyer, Waiānē Sun News, Navy News, Central Sun Press, East Oahu Sun Press, Military Sun Press, Hawaii Kai Sun Press and MikiWeek.



The modern family room uses cabinetry to create attractive, functional storage and a unique bar alcove. Shown here is the Hallmark cabinetry line accessorized with matching wine rails and two handy corner appliance garages.

Cabinets organize areas

Now more than ever, the key word in designing or remodeling a home is *functional*. One way to make your rooms both functional and glamorous is through the creative use of cabinetry. Attractive and versatile, cabinets feature a multitude of special options, that can be put to work efficiently all around your home.

Here are some suggestions for organizing your home with style:

• Garden room or potting area

Base cabinets with an easy-care countertop are perfect. Use roll-out wire baskets to hold bags of potting soil, stackable clay pots and gardening tools.

• Living room storage

Consider lining your living room with cabinets and bookshelves. Store your

seasonal decorations and family memorabilia out of sight but within easy reach.

• Built-in storage for a child's room

A well-planned storage wall eliminates the need for other furniture, with ample space for clothing and a desk surface for homework. Also, consider including an extra-deep roll-out wire basket to serve as an individual laundry hamper.

• Entertainment center

Every family room needs an organized system to house entertainment essentials. Television cords can be hidden behind cabinet doors, shelves above the cabinetry hold your stereo turntable and speakers, and a pull-out cutting board under a liquor cabinet is ideal for mixing drinks and slicing garnishes.

• Built-in buffet

Consider creating a built-in buffet with shelves to hold china and linens. An attractive laminate or tile countertop is perfect for serving buffet-style. And wall cabinets with stained-glass doors store your crystal and serving pieces while adding a decorative touch to the room.

• Bar

Turn an unused corner or a spare closet into a stylish bar. Use extra options to personalize your bar: a matching wine rail, panels with a classic stained-glass look and an appliance garage for your blender, for example.

• Corridors

In uneven or extra-wide hallways, cabinets keep everything from extra towels to vacuum cleaners out of sight but handy. Use open shelving above base cabinets for a mini-library.

Bring kitchen back to life

When it comes to remodeling and redecorating, the kitchen is one of the most popular places to start. Many of us would like to have more kitchen work space, but can't afford to add on. With a little organization and creativity, we can make the most of what we already have.

• When you need an additional cutting surface, place your large cutting board

directly over the flatware drawer. Many cabinets now feature cutting boards that are built in to extend work space.

• If you've decided new cabinets are your best bet, be sure to include some of the latest convenience options. Buy cabinets that offer roll-out wire storage baskets, handy appliance garages, pull-out shelves, matching wine rails and

many other step-saving options.

• For easy access to your most-used recipes and phone numbers, attach clear plastic divider pages, such as those found in photo albums, to the inside of a cabinet door.

• For cookbook storage, build a church-pew type bookshelf onto an island cabinet, the backside of a peninsula of cabinets or on the end of a row.

HARDWOOD LUMBER

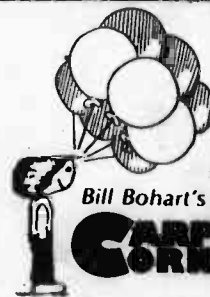
LUMBER

Alamosa	Cedar	Manson	Sapir
Anglo	Cherry	Maple	Shedua
Aplong	Damar	Oak	Spruce
Ash	Eucalyptus	Obache	Teak
Balsu	Hickory	Pau Ferro	Vermilion
Balsa	Iroko	Pine	Walnut
Beech	Ironbark	Poplar	Wenge
Birch	Jelutong	Purpleheart	Willow
Bubinga	Koa Mahogany	Rosewood	Zebrawood

PLYWOOD

Particle Board	Mahogany
Marine Plywood	Oak
Birch	Rosewood
Fir	Teak
Koa	Walnut

638-Kakoi St. Ph. 834-1463



Come Get your **FREE** Balloon During the Month of October

834-1456

Hours

9:00 - 5:00 M-F

9:00 - 4:00 Sat.

Closed Sunday

SALE! SALE! SALE!

SAXONY PLUSH
in 4 COLORS

\$6⁹⁵ s/y

HEAVY PLUSH
in 12 Colors

\$12⁹⁵ s/y

SCULPTURED NYLON
5 Yr. Wear Warranty

\$8⁹⁵ s/y

OUR MOST EXPENSIVE
DELUXE NYLON PLUSH

\$16⁹⁵ s/y

970 Ahua Street

(across from Gibsons)

"To Our Many Happy Carpet Customers, We Say ... 'Thank You!'"

NEW COVENANT GLASS TINTING

638-7795 by Appointment Only. ☎

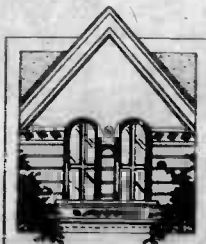
We Are Offering "GUARANTEED BEST Prices On Island" Through October For Your Home or Car.

WE OFFER

- ★ ISLANDWIDE SERVICE TO ANY HOME
- ★ 5-YEAR GUARANTEE
- ★ FREE ESTIMATES
- ★ PROFESSIONAL TINTING JOB
- ★ VARIOUS SHADES OF TOP-QUALITY TINT

94-119 FARRINGTON HWY.

(Behind Datsun of Waipahu)



Plastic: a tough idea

"Plastics. There's a great future in plastics." When a businessman uttered these famous words in the 1968 film *The Graduate*, he thought he was making a profound statement. But many people knew better. Plastic was already an integral part of American life; it was the present.

In the 16 years since that classic prediction, plastic has flexed its versatile muscles in a myriad of applications and industries. It's shown its toughness, cost-efficiency, suppleness and attractiveness in a variety of products from football helmets to dashboards.

Even so, plastic still carries some negative connotations: You don't like plastic people, and that certain someone wouldn't be too tickled if you sent a bouquet of plastic flowers. Of course, when you drop the shampoo bottle, you're glad it's plastic, and an astronaut wouldn't protect his head with anything else. And if you build \$200,000 homes, you'll certainly want plastic faucets throughout.

Plastic is elegant: Wait a minute. Plastic faucets in \$200,000 homes? That's right. One manufacturer reports that more and more builders are using plastic bathroom, kitchen and laundry faucets almost exclusively in their elegant and architecturally rich homes. The builders are impressed with the ease of installation and with their customer's response; the homeowners are impressed with how the faucets maintain their good looks after years of service.



Little hands make big demands, but both the faucet and the football helmet, each made of tough ABS plastic, stand up under years of service.

Plastic's advantage: Plastic's main advantage over metal is that mineral deposits in the water cannot stick to the slick plastic surface of the faucet's waterway, the chamber that carries water to the spout. These mineral deposits cling to metal waterways causing the unsightly, corrosive buildup that eventually ruins the interior seal and allows the faucet to drip.

Good idea to replace old caulk

The next time you see unsightly seams around the tub and vanity, don't despair. Fixing the cracks is easy. You'll need only a few tools to close up the seam line: putty knife, cleanser, rag and a high-quality caulk made especially for bathroom applica-

tions.

First remove the old caulk. Latexes and butyls become brittle and inflexible in as little as one or two years. Use a putty knife to pry out the old material. Wash the surface with a good disinfecting cleanser. After a couple of

practice passes on an old newspaper, you will learn the proper combination of pressure and speed needed to produce an even, continuous bead. Make sure the caulk comes in contact with both the fixture and the wall to ensure a watertight seal.

LEVOLOR® BLINDS



Consolidated Interiors

A Division of John's Upholstery

46-144 Kahuhipa St.

531-4553 or 247-5339

Serving All Of Oahu



Offer Expires Nov. 1, 1984

the Koa Showroom Your One Stop Koa Shop

SOLID HAWAIIAN KOA FURNITURE IN ALL NEW DESIGNS

KOA VENEER PLYWOOD

1/4" - Veneer 1 side — \$45⁰⁰

1/2" - Veneer 2 side — \$65⁰⁰

3/4" - Veneer 2 side — \$85⁰⁰

4' x 8' Sheets

4' x 6' x 3/4" - Veneer 2 sides — \$65⁰⁰

(Teak 1/4" & 3/8" Ply also available @ \$20 & \$55)

KOA PLANK FLOORING

A Revolutionary New Design for
Koa Flooring
Random Length— T & G

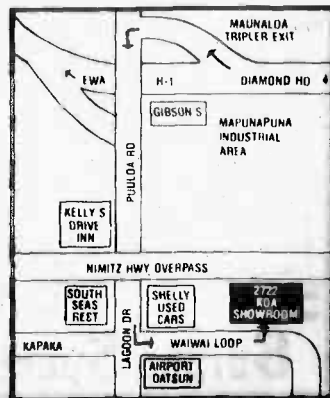
KOA PICTURE FRAME MOULDING & CABINET PULLS

Call or Have Your Builder Contact

Us for More Details

834-1003

2722 Wai Wai Loop
Monday-Friday
10:00-4:30
Saturday 10:00-4:00



Do-it-yourself quiz on home safety

Is your home attractive to burglars? Or do your precautions tell potential crooks to look elsewhere for an easy mark?

Despite the fact that burglary statistics are down by nearly 9 percent nationwide, according to recent FBI statistics, approximately one out of 14 homes will be burglarized this year.

The following do-it-yourself Home Security Survey, provided by Honeywell Protection Services, will take only a few minutes and can help you correct some of the most obvious danger points.

Simply mark the boxes with your answers and then score yourself as directed.

Home Security Survey

- 1) Does your home have exterior lighting?
 - A. No lighting.
 - B. Some lighting.
 - C. Lighting, front, back and garage area.
- 2) Do you leave these lights on from sundown to sunup?
 - A. No.
 - B. Yes, turn on and off manually.
 - C. Yes, automatic timer automatically turns lights on and off.
- 3) Is your home fairly isolated, far from neighbors, or not easily visible to neighbors?
 - A. Yes, neighbors cannot see my home, or hear noises.
 - B. House is hidden from view by fences, trees, shrubbery, etc., but is close enough to neighbors for them to hear a disturbance.
 - C. No, neighbors can see my home clearly and are within eashot.
- 4) Do you have an attached garage?
 - A. Yes.
 - C. No.
- 5) Do you have shrubbery around your home?
 - A. Yes.
 - B. Yes, but not near windows or doors.
 - C. No, not near house or garage.
- 6) Do you have windows that can be reached from the ground?
 - A. Yes.
 - C. No.
- 7) Do you have a basement?
 - A. Yes, with an outside entrance or windows.
 - B. Yes, with windows only.
 - C. No.
- 8) Have there been burglaries or incidents



C. No, neighbors can see my home clearly and are within eashot.

4) Do you have an attached garage?

A. Yes.

C. No.

5) Do you have shrubbery around your home?

A. Yes.

B. Yes, but not near windows or doors.

C. No, not near house or garage.

6) Do you have windows that can be reached from the ground?

A. Yes.

C. No.

7) Do you have a basement?

A. Yes, with an outside entrance or windows.

B. Yes, with windows only.

C. No.

8) Have there been burglaries or incidents

of vandalism in your neighborhood?

A. Yes; frequently.

B. A few.

C. None.

9) What are your doors made from?

A. Wooden, hollow or lightweight.

B. Wooden, solid or heavy.

C. Metal.

10) Do any of your doors have windows in them?

A. Yes.

B. Front door has adjacent window.

C. No, none.

11) What kinds of locks do you have on your doors?

A. Spring locks (simple lock in the knob).

C. Deadbolt.

12) How many locks do you have on your windows?

A. One, standard.

C. Two on each window.

13) Do any of the adults in your house travel regularly?

A. Yes.

C. No.

14) Do you take vacations away from home?

A. Yes.

C. No.

15) Are there times during the day when no adults are at home?

A. Yes, often.

B. Rarely.

C. Almost never.

16) Do you have children living at home?

A. Yes.

C. No.

17) Do you have an elderly person living with you?

A. Yes.

B. No.

Here's how to score your safety answers:

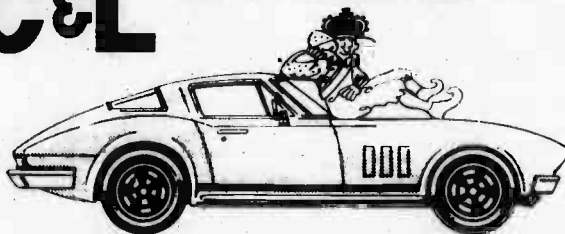
1. Add up all your "A" answers, your "B" answers, and your "C" answers.

2. Subtract 10 points for each "A" answer and 5 points for each "B" answer. Add 10 points for each "C" answer.

3. Scoring:
—105 and lower: Be careful! Your home is an open invitation to burglars.

—104 to 0: A determined thief could break into your home.

C&L Custom Interiors



COMPLETE AUTO & FURNITURE UPHOLSTERY



Free Estimates

235-4918

46-216 KAHUHIPA ST., KANEHOE



YOUR COMPLETE GARDEN CENTER

Lawn Grasses

Hybrid Bermuda
Zoysia
Centipede
Sod & Stolon

Landscape Plants

Ground Covers
Shrubs
Hedges
Trees

Orchids

Blooming Plants
Seedling Starters

Pesticides

Herbicides
Insecticides
Fungicides

Indoor Plants

Ferns
Dieffenbachia
Aglaonema
Ficus Beniamina
Dracaena
Rhipis Palms

Cut Flowers

Anthurium
Dendrobium
Red Ginger
Bird of Paradise
Heliconia
Carnations
Chrysanthemums
Roses-Mainland and local
Leis
Others when in season

Fertilizers

Organic
Inorganic
Time Release
Water Soluble

Fruit Trees

Mangoes
Bananas
Papayas
Citrus a wide variety
Mountain Apple
Avocado
Litchie
Bread Fruit

Lawn Care Tools
A well-stocked home garden tool center.

FRIENDLY & HELPFUL ADVICE

KANEHOE - 247-3911
45-580 Kam Hwy.

KAILUA - 262-4387
1127 Kailua Road

AMPLE FREE PARKING

\$825

**PER ROOM
3 ROOMS
OR MORE**



**CARPET
STEAM
CLEANING**

FREE

1 room of
SCOTCHGARD
with purchase
of wd

**OFFER EXPIRES
11-8-84**

1. INSURED PROFESSIONAL TECHNICIANS
2. SOFA & CHAIR STEAM CLEAN \$44.00
3. CARPET REPAIR & STRETCHING
4. WE MOVE THE FURNITURE
5. SPOT & STAIN REMOVER AVAILABLE
6. OPEN SATURDAYS & EVENINGS
7. WE SERVICE ALL OF OAHU

488-6364

Carpet Specialist "in Paradise"

Home improvement: first step is to take inventory

Fall is an excellent time for home improvements. The autumn is a transitional season which, like spring, is neither too hot nor cold to accomplish major projects. During these seasons, people are more adventurous and desirous of trying new things or improving their current lot.

Besides satisfying an inner need to do "something," working on home repairs is productive. Before the winter cold sets in, analyze the "anatomy" of your house.

Beginning with the exterior, does your roof allow for proper drainage after heavy precipitation? Is the siding sturdy and aesthetically pleasing?

Are there any air leaks from the windows? Do the windows fit their frames? Do they open and close properly? If you don't have them, you may

want to consider adding storm windows.

Are there security locks or gates on windows to discourage burglars from entering? An alarm system might be worth the investment to deter criminals and provide personal security.

Is there adequate insulation? Does the thermostat regulate the heat efficiently? With the government's suggestion of lowering thermostats to save energy, it might be worthwhile to stock up on decorative afghans and woolen blankets for the cooler rooms.

There's as much to do on the inside as on the outside. If you've been procrastinating, this is the perfect time to fix up the attic or basement. Investigate refinishing alternatives. If there are teenagers living at home, why not create a

living space for them?

Or, consider using parts of these rooms as studios for hobbies. Wood and metal working shops would be great for working on home repair projects through the winter.

Sandwiched between the upstairs and downstairs are the main living quarters. Take a kitchen inventory. Are there sufficient appliances and work areas to aid you in your culinary expression? Is there a way of reorganizing your available space to make it more efficient?

Inspect the living room and den. Does any of the furniture need to be reupholstered or replaced? How about sprucing up these rooms with house plants?

Has each room's appearance been maintained?

**HONOLULU
ROOFING**
Serving Hawaii Since 1946



SAVE On Everything Under the Roof!

Our new Home Interiors Center offers you a wide selection of quality:

- Window Coverings
- Wood and Vinyl Flooring
- Draperies
- Ceramic Tile
- Carpeting
- Specialty Coatings/Waterproofing

Remodel with the Professionals.

First 3 purchasers of 150 sq. yds. of carpet will receive a free 8' x 8' mini-blind!

FINANCING AVAILABLE

Sale prices in effect Oct. 15 thru Nov. 3.

Visit our showroom at

3015 Koapaka Street • Open Mon.-Sat. 8am-5pm

Phone: 833-6366

A Watkins Pacific Company
LIC. NO. EBC 02840

Universal Paints WHAT A BARGAIN

FACTORY BRANCH DIRECT TO YOU



**INTERIOR/EXTERIOR OIL BASE
SEMI GLOSS**
#4400 Series
Pastel & Deep Colors
Reg. \$19.99

13.37



EXTERIOR LATEX SEMI GLOSS ENAMEL
#4900 Series
Pastel & Deep Colors
Reg. \$18.99

12.19

INTERIOR LATEX SEMI GLOSS ENAMEL
#4700 Series
Pastel & Deep Colors
Reg. \$17.99

9.99

INTERIOR/EXTERIOR LATEX FLAT
#999 Series
White or Off-Whites Only
Reg. \$8.99

5.95

(No Charge For Mixing Pastel & Deep Colors)

SAVE 10% to 50%
(Prices Good Until 11/3/84)

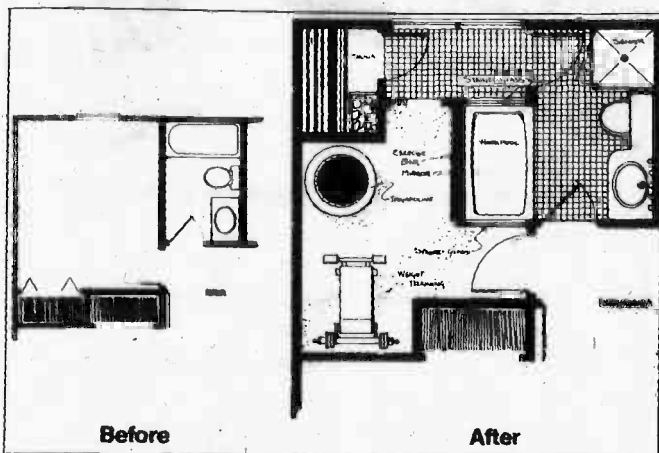
WE AIM TO PLEASE — MONEY-BACK GUARANTEE.
PERSONAL CHECKS — MASTERCARD — VISA — WE WELCOME CHARGE ACCOUNTS

**MANY MORE ITEMS
TO CHOOSE FROM!**

MAIN BRANCH
PH. 847-5744
STORE HOURS

1409 COLBURN
Mon.-Fri. 7 am - 4 pm
Sat. 7:30 am-noon
Closed on Sunday

Expansion ideas: Extra bathroom space



A plain bedroom and bathroom can become a luxurious health spa. Convenience, in the tiled "wet area" and in the compartmentalized design that allows for privacy, has not been forgotten in this remodeling idea.

Make bedroom a spa

If you like to work out, but don't have the time or energy to travel to a health club, here is a remodeling idea that will help keep you in shape. You can have your own health spa at home by converting a spare 10-by-12 bedroom next to a 9-by-5 bathroom into a luxurious area for daily workouts.

The bedroom becomes the main workout area by removing the closet to make room for weightlifting equipment. A trampoline and an exercise bar are also included to round out your routine of aerobic exercises. A mirrored wall behind the exercise bar visually expands space in the fitness area.

One corner of the bedroom becomes a sauna. By removing the wall between the two rooms and replacing the original tub with a shower, access to the bathroom is created and the entire "wet area" can be tiled. The extra space created by removing the wall also makes room for a whirlpool in the expanded bathroom. To maintain privacy, a door separates the main bathroom area from the sauna and fitness area.

The new construction in the two rooms

will go quickly if your remodeler uses quality pneumatic tools. Power driven tools do a quality job in about half the time needed to hand-nail.

These ideas and many more are included in a collection of design ideas called

"Design Directions: A Portfolio of Architectural Concepts."

This colorful portfolio is available for \$8.50 from Duo-Fast Corporation through Juhl Associates, Dept. BV, 121 W. Franklin Street, Elkhart, Ind. 46516.

Ceiling fans save

Before air conditioning, there was the ceiling fan. Now there is still the ceiling fan, but with advantages of greater efficiency and modern design to help with summer heat and energy costs.

You can really beat the heat when you have both an air conditioner and a ceiling fan.

Simply set the fan to blow downward from the ceiling to set up a mild wind-chill factor. This cooling effect allows you to operate the air conditioner at a higher thermostatic temperature without discomfort.

A 52-inch fan with four or five blades will use approximately 26 watts — less than most light bulbs — when operated at low speed. The fan allows you to set a higher tempera-

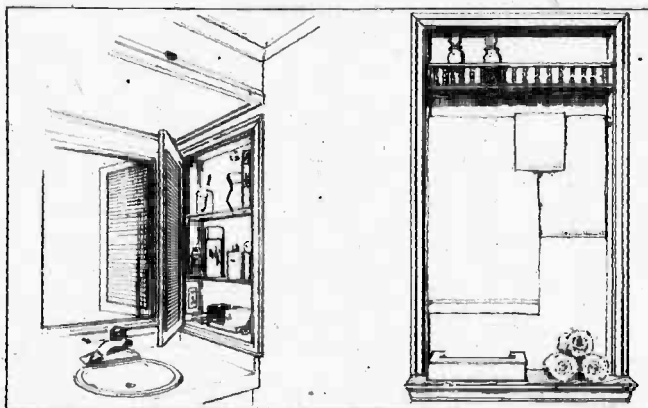
ture on the air conditioner and substantially reduce energy use and cost.

Today's bathrooms are as luxurious and dramatic as any other room in the house; and any old, plain bathroom can easily be transformed into

stylish living space.

One good idea is to use the stud area to add useful storage in an eye-catching way. A medicine cabinet recessed into the stud

area can hold hair dryers and electric contact lens cleaners used every day, and an outlet can be included right inside for convenience.



This medicine cabinet and towel bar are two ideas for creating a beautiful and useful bathroom.

•New Construction •Remodeling •Renovation

Specializing in Restoration of Old or Antique Homes

Residential & Commercial

Free Estimates

Serving Hawaii Since 1971

INTERESTING INTERIORS

247-1945

Lic. BC11190

GENERAL CONTRACTORS
LEONARD A. PETERS

1. FAMILY RM. (12'0" x 24'0") PRE-CUT

BUILT WITH 2x4 DB'L WALL QUALITY CONSTRUCTION • CONC. SLAB • BUILT-UP ROOFING
• ELECTRICAL WIRING AND ELECTRICAL FIXTURES • COMPLETE

\$5995

PERMIT AND
4% TAX EXTRA



2. OPEN LANAI (10'0" x 20'0")

\$1395

PERMIT AND
4% TAX EXTRA

SAME AS DESCRIBED ABOVE W/OUT INTERIOR AND EXTERIOR WALLS, CONC. SLAB AND ELECTRICAL
• COMPLETE FINANCING CAN BE ARRANGED WITH SMALL MONTHLY PAYMENTS TO FIT YOUR BUDGET.
• TAKE ADVANTAGE OF THE EQUITY IN YOUR HOME AND OUR SPECIAL ONE-TIME OFFER. PRICES WILL CONTINUE TO RISE!

KEN ITAMURA CONTRACTING

"GENERAL CONTRACTOR"

PHONE

247-8701

CONT. LIC. BC-9608

46-158 MALINA PLACE,
KANEHUE, HI. 96744

Yes, We Do Roofing Too:

• ROOFER • PITCH AND GRAVEL
• ALUMINUM • COMPOSITION SHINGLE
• COPPER • CEDAR SHAKES

**HELD
OVER
BY
POPULAR
DEMAND**

Caulking stops leaks

Water that leaks in around pipes, flashings and gutters can cause a great deal of damage to your home. Caulking is an efficient, easy way to stop leaks and save money. Most caulking compounds will effectively seal joints that are one-half inch or less in length or depth.

Successful caulking starts with proper surface preparation and the correct caulking material, according to researchers at Geocel Corporation, a leading manufacturer of caulks.

The surface must be thoroughly cleaned first to remove dirt and grimy residue. It's best to chip away any old caulk, remove old paint with sandpaper and then wash the area with a household detergent.

Areas where dissimilar materials

form a seam, such as a brick chimney to metal flashings, a flexible caulk works well. This type of caulk is very elastic and accommodates the natural expansion and contraction of construction seams.

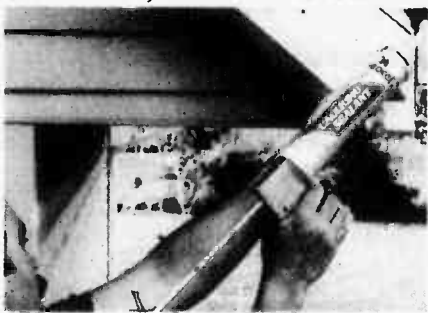
Caulking is not difficult, but it may take a little practice to feel comfortable during application.

Begin at the top or end of the joint.

Holding the cartridge nozzle at a 45-degree angle slowly pull down or across the joint, gently squeezing to leave a smooth bead.

Try to avoid making jerky stops and starts.

After you complete your first successful caulking job, go through your house and check for all the other places where caulking can supply an effective solution to air and water leaks.



How to buy paint

There is a saying that people will buy cheap paint once, but they'll buy quality paint again and again. But how can you be assured you're purchasing a good-quality paint — one that will adhere to the surface and be easy to clean when scuffed? There are a few guidelines that will assure you've bought a good-quality paint that will perform as you expect.

One of the first steps is to identify what characteristics you

want and need in a paint. Do you need a paint that can be scrubbed? Do you need a coating for high-humidity rooms like the kitchen and bath? A tough coating for the porch floor?

In formulating coatings to meet this variety of needs, paint manufacturers must provide the benefits you expect, such as easy soap-and-water cleanup, quick drying, scrubability, stain resistance and strong hiding power. The

result should be a good-quality coating that meets the need for which it is designed and also satisfies your expectations.

One of the best ways to ensure that you are buying a good-quality paint designed for your specific application is to consult a professional paint dealer. He can help you avoid costly mistakes such as using exterior-trim paint on metal downspouts, which may require a coating for galvanized metal.



Some tips for wood

The subtle warmth of real wood enhances almost any decor. Whatever the style — a Victorian theme with fine wood furniture, a contemporary setting with sleek wood floors or a dazzling 21st-century look with rich wood accents — wood finishes bring out the natural beauty of fine wood furniture.

To get the best results with a wood stain, follow these finishing tips from the experts at Fuller-O'Brien Paints:

Getting started
Remove all knobs, drawer handles and other hardware. Mask off the areas not to be stained. Doors and drawers should be removed and finished separately. Do not forget to place drop cloths under your staining project.

• Use good-quality, clean tools for the best staining results. A 3-inch pure bristle brush is perfect for most jobs. A soft cloth or cheesecloth is best for wiping surfaces. You can also use a spray gun for objects that can be finished in a large, well-ventilated room such as a basement or garage.

Woods and finishes
• Remember: Always sand with the wood grain, never against it.

• To prepare unfinished wood surfaces, sand the surface smooth. It must be completely clean and dry before staining.

• To stain a dark wood to a lighter color, you must sand and then bleach the surface.

Sealing windows valuable

If your home improvement schedule includes repainting windows, there are several steps that will ensure a better-looking, longer-lasting finish.

Proper surface preparation is essential. It will make painting easier and faster. Scrape away all loose paint, brush completely with a wire brush and smooth any paint edges by sanding lightly. Thoroughly clean all surfaces with detergent and water and let dry.

For added protection, coat the wood with a transparent, water-repellant which contains waterproofing solids that form a barrier against water penetration. For maximum protection, apply two coats of sealer. Brush on the sealer with a clean paintbrush.



ROOFING SPECIAL
CONT. LIC. C6465
ON ALL TYPES OF ROOFS

**RESIDENTIAL
COMMERCIAL • INDUSTRIAL**

MEMBER OF HAWAII ROOFING CONTRACTORS ASSOCIATIONS

- PITCH & GRAVEL REROOF:** for example 1,500 sq. ft. **\$1,275⁰⁰** plus tax
Spec. SCRAPE OFF EXISTING GRAVEL AND DISPOSE. MOP ON SOLID WITH ASPHALT 3 PLY 15# FELT. FLOOD COAT WITH ASPHALT AND GRAVEL IN WITH A ROOFING CHIPS. CLEAN UP ALL DEBRIS CAUSED BY REROOFING LIFE EXPECTANCY 10 YEARS.
- FIBERGLASS SHINGLES REROOF:** 1,500 sq. ft. **\$1,425⁰⁰** plus tax
Spec. NAIL ON 1 PLY 15# FELT NAIL OVER 225# ASPHALT. SHINGLES COMPLETE WITH STARTER AND HIP & RIDGES LIFE EXPECTANCY 20 YEARS.
- HEAVY SHAKES CEDAR REROOF:** 1,500 sq. ft. **\$3,000⁰⁰** plus tax
Spec. TEAR OFF EXISTING SHAKES AND DISPOSE NAIL ON 2 PLY 30# SHAKELINER FELT. NAIL OVER 1/4" 24 HEAVY SHAKE COMPLETE WITH STARTERS AND HIP & RIDGE

CALL FOR A FREE ESTIMATE 456-5990
For This Month Only
Serving All of Oahu

WHITE PAPER SUBJECT TO ACCESSIBILITY PRICES GOOD THRU NOVEMBER 30, 1994

HONOLULU FAN SHOP — HONOLULU FAN SHOP — HONOLULU

END OF SUMMER SALE

50% OFF



36" LAGUNA

- White or Brown w Brass & Wood Blades
- 3 Speed Reversible
- True — Line Ball Hanger
- 5 Year Warranty
- Light Adjustable
- Limited Quantities

NOW \$59⁹⁵

Reg. \$119. 9

Hawaii's Lowest Price

PATTON

AMERICAN MADE QUALITY FAN

PATTON Ceiling Fans do it beautifully

- Rich brass finish — all metal construction
- Reversible Motor For Both Cooling or Heating
- Solid, Hand Rubbed, Hardwood Blades
- 5 Year Warranty



HONOLULU FAN SHOP

1236 SOUTH KING STREET

TELEPHONE: 521-FANS/521-3267

Monday-Thursday 9 a.m.-5:30 p.m.
Friday-Saturday 9 a.m.-6 p.m.
Sale Ends Oct. 25, 1994

HONOLULU FAN SHOP — HONOLULU FAN SHOP — HONOLULU

**We're not just a Pool place
anymore . . .**

. . . Home Improvements **are more** than
just fixing what's wrong. (It is that, — but
so much more!)

Home Improvement can encompass a
[redacted] as well as an attractive

Or, it CAN mean a **complete change** in the
outward look of your home.

Now is the time to enhance all the
attractive qualities of your home [redacted]

SAFARI STONE.

The look of water-glazed brook
paving. A [redacted] fine-grain gravel that
forms a new and beautiful, as well as
hardy, surface for decks, patios, entry-
ways, driveways, walks, [redacted]

Bonded with the highest-quality in-
dustrial epoxy to your existing surface,
SAFARI STONE forms [redacted]
[redacted] with the underlying structure and
[redacted] It is naturally porous,
weather- and wear-proof, and [redacted]
than carpeting and other less durable
surfaces.

See or call us today for a [redacted]
on your new **SAFARI STONE** improve-
ment.

The beauty of a **SAFARI STONE**
surface is limited only by [redacted]

ALL POOL & SPA

Kailua

776 Kailua Rd. • 261-8991

Kahala

4210 Waialae Ave. • 737-8406

Aiea

98-1277 Kaahumanu St. • 487-1141

Hawaii Kai

Koko Marina Ctr. • 395-5130