

HAWAII MARINE

Voluntary payment for delivery to MCAS housing/\$1 per four week period.

VOL. 11 NO. 38

KANEOHE BAY, HAWAII, SEPT. 22, 1982

SIXTEEN PAGES

Stray animal laws enforced

by Sgt Christine Tonegatto

The number of stray or lost animals picked up by military police at the air station has increased. Enforcement of regulations concerning leash laws has also become more intense.

"Sixty-four animals were picked up during August," reported Sergeant George Doyle, noncommissioned officer in charge of the Security Department's Animal Control. "When that number was broken down it showed that 34 of them were cats, 25 were dogs and five were other animals."

"Unfortunately, only 11 of these animals were claimed by their owners. That left 52 animals listed as strays or turn-ins," Doyle said. "These animals had to be transported to the Hawaii Humane Society."

The following control measures will help base residents heed the regulations.

All dogs and cats must be on a leash (voice control does not constitute restraint) while in the owner's yard and not accompanied by the owner or when outside of the owner's yard and in control of a responsible person.

Owners are responsible for the daily removal and sanitary disposal of their pet's dropping from any site on the air station.

Pets are considered to be a nuisance when they become offensive to the senses of others. Owners must keep pets under control at all times. Proper control means that unattended animals be kept indoors, enclosed in a fenced area with approval of fence and permit from the Station Housing Office) or attached to a line or leash. Such a line or leash must restrain the animal within the confines of the owner's yard.

Some examples of animal nuisances are: generating of offensive odors; unprovoked vicious temperament; excessive

noise or barking; scattering of trash and garbage; soiling other persons premises or public places and damaging shrubbery or flowers.

When violations of regulations occur, pet owners will receive a letter of warning from the station's commanding officer via the commander of the individual involved.

In serious cases where the health or safety of station residents deem it necessary, immediate removal of the animal will be required.

Military police will pick up any unlicensed, stray or lost animal on the station. If an owner no longer desires to keep a pet, the owner may call the military police to have the animal picked up and delivered to the Hawaii Humane Society.

Owners should observe the following ten rules of kindness to pets:

1. Make sure your pet has clean, fresh water at all times.
2. Give your pet an appropriate diet of healthful, nutritious food.
3. Make sure your pet is properly identified by tags and licenses to ensure they will be returned to you if lost.
4. Sterilize your pet so it does not unnecessarily contribute to animal overpopulation problems.
5. Take your pet to the veterinarian regularly for shots and checkups.
6. Spend some time with your pet each day, playing, exercising or training it.
7. Never allow your dog or cat to bark, meow or howl annoying. Noise is a nuisance to your neighbors.
8. Never allow your pet to soil sidewalks or neighbor's lawns. If it does, clean it up immediately.
9. Pet and praise your animal daily.
10. Make your pet's life as interesting and happy as possible. A bored pet can be a destructive pet.



ROAMING CAT— Garfield never had it so good. However, this stray cat, if caught by the Security Department's animal control unit, will be transported to the Hawaii Humane Society. (Photo by Sgt Chris Taylor)

Coming soon



The world famous Blue Angels precision flying team will come into view in Windward skies Oct. 30 and 31, as they highlight the MCAS Kaneohe Bay Open House.

The open house, 9:30 a.m. to 4 p.m. each day, will include static displays of Marine Corps air and ground equipment, rappelling and SPIE rigging (Special Patrol

Insertion/Extraction) demonstrations and aerobatics in privately owned planes.

The Blue Angels' flight demonstrations begin at 1 p.m. both days.

This visit by the Blues will mark the first time in 12 years that the team has performed in Hawaii.

Making sure "John Doe" is John Doe

Army Central I.D. Lab identifies war dead

by Sgt Pepper Davis

U.S. ARMY CENTRAL IDENTIFICATION LABORATORY, Hawaii — The United States and Vietnamese governments recently inked a pact to locate and return the remains of U.S. servicemen believed to be buried in Vietnam.

Since World War I, through Vietnam, more than 92,000 U.S. servicemen were lost in combat. One hundred forty-two thousand were captured and 17,000 of them died while in captivity.

As of September this year, the bodies not recovered count stood at 2,476: Air Force, 935; Army, 703; Navy, 507; Marine Corps, 293; U.S. civilians, 19; Third Country Nationals, 18, and Coast Guard, 1.

This venture is expected to be lengthy and at times, frustrating. It is also possible that not all the remains will be recovered, but for those that are, the identification process will be monumental, meticulous, and time-consuming.

For the record, and the sake of any next of kin, positive I.D. is paramount. While the rest of the country wait, this lab will be engrossed in ensuring those remains assumed to be those of "John Doe," are actually the remains of John Doe.

According to Major Johnnie Webb, laboratory commander, this lab is the only one of its kind in the world to perform this mission. Its primary function is to search, recover, and identify the remains of American servicemen killed while serving in World War II, Korea, and Vietnam.

During World War II, the CIL headquarters was at Schofield Barracks, but was reestablished in Thailand in March 1973. Hawaii became its permanent home in May 1976. Webb said Hawaii was chosen because of its prominence in the Pacific.

Twelve people — six civilians and six soldiers — comprise the lab's staff. "Our physical anthropologist has a lot of expertise in the field. He's been in it for more than 32 years. The lab chief is a trained mortician with 33 years experience," boasted the major.

The military workers are divided into a Casualty Analysis section that maintains records of all casualties from Vietnam, and some from Korea and World War II; and a Search and Recovery team of highly-trained retrievers and investigators. They venture into designated areas to search for remains and are usually dispatched for weeks, following leads here and there. Their most recent searches have taken place in New Guinea and Canada.

Most of the remains they recover are skeletal, which creates a problem with identification. Webb explained that it is easy for them to determine if the deceased was of either the Caucasoid, Negroid, or Mongoloid race, by examining the skull. Other than that, more in-depth tests are required. "We need a starting point; we must have background information on age, height and body structure," said Webb.

Doctor Tadao Furue, the anthropologist, invented a seemingly fool-proof I.D. method called the Cranial-Facial Superimposition System.

Using a 35mm camera, strategically set-up with lights, mirrors, a wire screen and control switch, Furue can superimpose a skull and a photograph believed to be of the deceased, in an attempt to match the skull's bone structure with the contour of the face in the photograph.

If the pairing coincides, it is a strong indication that the cranium belongs to the person in the photo. But that does not satisfy Furue. He employs a similar camera and mirror arrangement to check the remain's teeth

against dental X-rays.

More tests follow, and when he is positive of his findings, he makes his decision. "If there is any doubt about the identification, we will not make recommendation," cautioned Webb.

Webb explained that their findings are not technically final. The results are forwarded to the Armed Services Grave Registration Office in Washington, D.C. A board reviews the lab's evidence and, if they accept the report, the I.D. is considered legitimate. But on occasion the CIL has been disputed. "We've been challenged, but we've always won. It's very hard to accept our findings, and we understand that."

When the identification is accepted, an extensive search is launched for any primary next of kin of the deceased. Webb said in cases involving remains from Korea or World War II, the search is usually long because of the time lapse. He said locating family of Vietnam era remains is simpler because of it being a recent event.

Meanwhile, the remains are sent to the Army Mortuary in Oakland, Ca., where they are placed in a casket with a uniform of the respective service, appropriate decorations, and await to be escorted to their destination.

If no relatives have been found, the deceased is given a military funeral with full honors, and interred in a national cemetery. Those remains that are united with next of kin may also, upon request, be buried in the cemetery with honors.

Webb said it would be difficult to pinpoint how much the government spends on this program, but he indicated that it is not a cheap endeavor. "We (Americans) honor our dead servicemen very highly, and regard them as heroes. So we bear any expense to bring them home."

SgtMaj Trawick assumes top enlisted post

by Sgt Marie Woods

Sergeant Major Earl R. Davis relinquished his duties as the station sergeant major here to Sergeant Major Willie F. Trawick, during ceremonies Thursday.

Davis, who came here in June 1979, will report to the 8th Marine Corps District, New Orleans, and will assume the duties as sergeant major there.

Trawick last served as the sergeant major of Station Operations and Maintenance Squadron here. He enlisted in the Marine Corps in January 1958. Upon completion of recruit training at Parris Island, S.C., he was transferred to Training Command, ITR, Camp Lejeune, N.C.

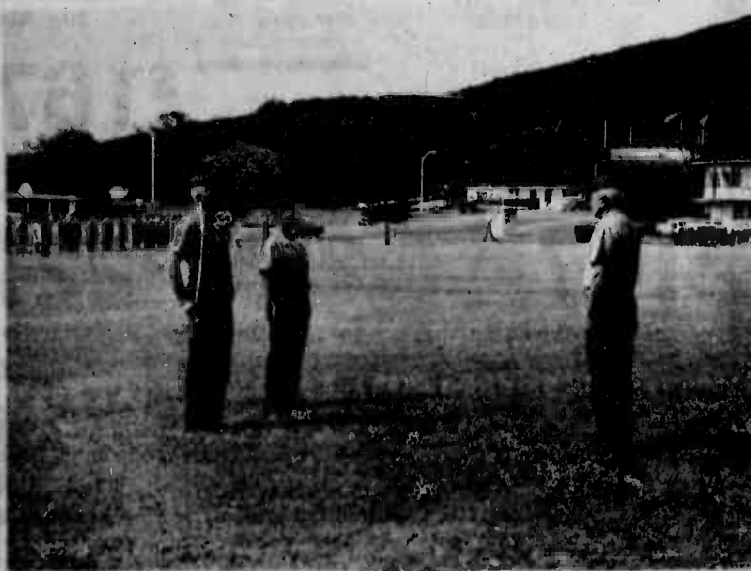
He served at Marine Corps Recruit Depot,

Parris Island, S.C.; with 3d Battalion, 9th Marines in Vietnam; and with 1st Marine Brigade here as first sergeant of Company B, 1st Battalion, 3d Marines.

Subsequent tours of duty include HqCo, HqBn, 3d Marine Division in Okinawa; HqCo, HqBn, 2d Marine Division; and upon selection to sergeant major in 1976, he was transferred to Marine Corps Logistics Support Base, Albany, Ga.

His personal decorations include the Navy Commendation Medal and the Combat Action Ribbon.

Trawick is married to the former Faustine Smith of Eastman, Georgia. They have five sons: David, Jeffrey, Kenneth, Kevin, and Marine Lance Corporal Michael Trawick.



CHANGE OF SENIOR ENLISTED — Sergeants Major Earl R. Davis (left) and Willie F. Trawick report to Colonel Charles Robinson, commanding officer of

Marine Corps Air Station Kaneohe Bay. Davis relinquished his duties as station sergeant major to Trawick on Thursday. (Photo by LCpl Patrick Lewandowski)

Consumer's Choice

Supermarket strategy — don't let it fool you

EDITOR'S NOTE: Consumer's choice is a column designed to bring all aspects of a subject to the consumer's attention. Part one of this subject is based on an original television script written by Cherrill Alfou Anson. It deals with the consumers and supermarket strategy.

Knowing how to buy food intelligently is just part of the battle in getting the most of your food dollar. For better or worse, most of us spend that dollar in the supermarket — that American institution where scores of statisticians and market researchers study consumers quite closely to find out what sells and why. The object of the game is to get you to buy things you didn't know you needed.

Let's look at three primary factors dealing with the money you spend and how you spend it.

First of all, believe it or not, groceries are the least profitable merchandise in the supermarket. The gross profit margin on some nonfood items is almost twice the

profit on groceries. This explains the reasons why you can now go into any supermarket today and find expanded greeting card sections, clothing departments, cosmetics and plants in your local grocers or supermarket.

In 1974, when the throes of a recession were upon us, some 74 percent of shoppers used a list while shopping. But in 1977 studies indicated that the percentage has dropped back to 1969 levels and only 40 percent of the consumers used lists. That made good news for marketers, for it meant that more unplanned purchasing was going on.

And to prove this the same study cited above shows that about half our supermarket purchases are unplanned, or made "on impulse". Supermarkets have developed lots of ways of encouraging use to make those impulsive purchases. For example, most stores are arranged so that in order to find necessary items such as lettuce, milk, bread, and meat, the shopper has to walk around the perimeter of the store.

This way, consumers are exposed to the aisle displays filled with high-profit items like junk-food or munchies.

The marketers have even found that special displays may sell nearly as well at regular prices as similar displays offering reduced prices. With a little observation you'll notice that high-profit items are usually at eye level, or when they're aimed at children, the display case is arranged at a child's eye level.

The most effective marketing techniques work on the consumer's subconscious. Most shoppers think while they are

shopping, rational decisions are being made as far as buying power. This isn't always the case unless the consumer realizes with the conscious mind what the marketers are doing. Some come to the supermarket primed by advertising and once the consumer is in the market, packaging takes place over what is really needed in most cases. The marketers know that women are attracted to red and men to blue that green attracts shoppers who long for greenery and yellow tempts the ones who love the warmth of sunshine. They also know buyers have an emotional

response to fragrance. Marketers have learned that by adding a fragrance to any product they can boost sales. Now lemon and other fruits along with herbal scents have been added to everything from floor polishes to shampoo simply to hype sales.

The experts know that display space in the supermarket plays a major role in advertising. The more rows of the product, the more sales. It's also a fact that people can absorb and process only so much information during any given time period. The cereal aisle, for example, may display 76

different kinds of cereal. On each box are at least 30 different pieces of information. Making a rational decision under these circumstances requires a strong preplanned strategy.

Being able to outsmart the marketer and get the most from your hard earned food dollars isn't always easy but if you choose to be a wise consumer you have taken the first step at being a conscious-buyer. The best way to get more for your money in the supermarket is to avoid impulse buying by using a prepared shopping list and shop specials when they really are specials.

Don't get caught uncovered.

Retire after 30 years and get 75% of your base pay from the day you retire. Not at age 55, 62 or 65 like most civilian jobs.



FAMILY CHIROPRACTIC CENTER



Dr. Lawrence J. Connors, M.A., D.C.

- Headache
- Nervousness
- Neck Pain
- Shoulder-Arm Pain
- Bursitis
- Arthritis
- Backache
- "Pinched Nerve"
- Numbness in Hands or Feet

X-RAY FACILITIES
WORKER'S COMPENSATION
INSURANCE
HEALTH LECTURES
1ST & 3RD SAT. 9:30 A.M.

No Charge For Consultation
CHIROPRACTIC... THE NATURAL
SOLUTION TO HEALTH PROBLEMS

KANEOHE BUSINESS &
PROFESSIONAL CENTER
46-005 Kawa St., Suite 201
235-6677

25% OFF
ON EYEWEAR,
LENSES, FRAMES
SUNGLASSES
Effective until Sept. 30, 1982



Super Values In Sight!

- One year guarantee on all glasses.
- One day service available on single vision.
- Dedicated to quality and service in vision care.

Dr. Charles Dean
Optometrist

KAILUA
139 Hekili St.
261-9735



THE VIDEO EXPERTS! THE BEST VIDEO LIBRARY! FINEST SERVICE! BEST DEALS!

ZENITH Hi-Tech SALE VIDEO DIRECTOR



This superb Beta video cassette recorder features electronic tuning at a super value price! Features 1-day auto record, Speed Search and electronic "feather touch" controls.

WHEN YOU WANT THE BEST IN VIDEO EQUIPMENT... YOU WANT ZENITH

The quality goes in before the name goes on

ONLY \$489.

PLUS receive \$50.00 FREE Movie Rentals (1 per week for 10 weeks)

HAWAII'S LEADING VIDEO STORES
OUR SERVICE IS SECOND TO NONE!

- Lowest prices
- Video Experts
- Reliability

VIDEO CENTER

OF HAWAII
The Video Specialty Stores

Main Store 836-5056 Kailua 961-2012 Waikehu 671-6706

ONLY
*27.50
PER MONTH
NO INTEREST
OR FINANCE
CHARGES

SPECIAL ARMED FORCES OFFER Hawaii's Hottest Action Package

Offer Expires Sept. 30, 1982

*Minimal Downpayment Required
Offer Applies to Active Duty Personnel & Dependents Only.

When ACTION is a way of life, you expect more during your off-duty hours. More fun. More excitement. And now, Hawaii's Action Place has a Special Armed Forces Membership Offer that will put more dynamite features at your fingertips than ever before...ALL AT A SPECIAL PRICE NEVER OFFERED BEFORE!! Here are just some of the many features waiting for you:



- Co Ed Conditioning Area
- Nautilus, Universal and Free Weight Equipment
- Dance and Aerobics
- Championship Racquetball Courts
- Babysitting Facilities
- Basketball
- Volleyball
- Sauna
- Whirlpool
- Pro Shop



SPECIAL BONUS OFFER

FREE
UNLIMITED RACQUETBALL
FOR NEW MEMBERS WHO JOIN BEFORE SEPT. 30, 1982

Courthouse RACQUETBALL AND HEALTH CLUB HAWAII'S ACTION PLACE

Paa Club 833-6619 Kaneohe Club 235-5839 Kapiolani Club 942-8990
Open 24 Hours Open 6:00 a.m.-11:00 p.m. Under Construction

Call or Come In Today and Ask For
The Action Package

Ceiling Fan CONTAINER SALE



A delayed container of new ceiling fans have arrived for immediate liquidation. All fans must be sold by Sunday. Therefore, we are offering contractor prices to the public. These prices are guaranteed to be the lowest in Hawaii!

48" S.M.C.
Sug. Retail \$169⁰⁰

\$47

- 5 speed
- 5 year warranty
- Metal body
- Metal blades

48" PRIMA FAN
Sug. Retail \$199⁰⁰

\$97

- 5 year warranty
- 3 speed
- White or brown
- Whisper quiet

52" COMFORT BREEZE
Sug. Retail \$309⁰⁰

\$147

- 5 year warranty
- Reversible
- Whisper quiet

4 light kit with purchase \$39

48" FULL BRASS
Sug. Retail \$209⁰⁰

\$97

- Sealed bearings
- 5 year warranty
- Variable reostat

52" CASABELLA W/GOLD
Sug. Retail \$409⁰⁰

\$167

- High quality cast iron housing
- Reverse air
- Variable reostat
- 5 year warranty

52" HUNTER
Sug. Retail \$419⁰⁰

\$227

- 2 speed
- Hunter quality
- Limited lifetime warranty
- Brown



single light kit with purchase \$19

PACIFIC SURPLUS & DISTRIBUTORS CALL NOW 262-8131

CLOSED TUESDAY
Monday thru Saturday 9:30-6:00 pm
Thursday 9:30-9:00 pm
Sundays 11:00-5:00 pm

1247 F Pali Hwy (1 block east of Castle Hospital)
in the new 7 Eleven Complex in Kailua

HAWAII MARINE

The Hawaii Marine is an unofficial newspaper published every Wednesday by RFD Publications, Inc., 46-016 Alaloe St., Kaneohe, Hawaii 96744, in the interest of U.S. Marine Corps personnel in Hawaii. All news copy is prepared in the Joint Public Affairs Office, Marine Corps Air Station, Kaneohe Bay, Hawaii 96863, 257-2179.

Copy must be submitted no later than noon Thursday for the following Wednesday publication. Hawaii Marine solicits contributions of information and photographs from all Marine Corps organizations. However, it reserves the right to edit or rewrite material submitted. All advertising is arranged by the publisher, RFD Publications, Inc., telephone 235-5881. Circulation is 8,000.

Everything advertised in this publication must be made available for purchase, use or patronage without regard to race, creed, color, national origin, age or sex of the purchaser, user or patron. A confirmed violation or rejection of this policy of equal opportunities by an advertiser will result in the refusal to print advertising from that source.



CLOWNING AROUND — Sergeant Thomas Glenn, Marine Medium Helicopter Squadron-265, entertains children in his clown costume at one of the locations for the Muscular Dystrophy Association's annual telethon. The event was held Sept. 5 at Windward Shopping

Mall in Kaneohe from 3-6 p.m. Glenn helped raise approximately \$250. Muscular Dystrophy is one of more than 140 agencies funded by the Combined Federal Campaign, that runs until Oct. 20.

Ombudsman

If you have a question or complaint about the content of the *Hawaii Marine* — or a suggestion or compliment — please telephone our Ombudsman, Gunnery Sergeant Don Gilbert, at 257-2179.

Gilbert, the Joint Public Affairs media operations chief, will endeavor to answer your questions and complaints through impartial investigations. He will accept calls between 7:30 a.m. and 4:30 p.m.

HISPANIC HOMEWORK

The *Hawaii Marine* needed to do more homework on the "Hispanic American..." article in last week's issue, according to Master Sergeant Ramiro Cuellar, Communications Electronics Office. The article didn't mention the Spanish conquest of North America, the top said. And, the descendants of North America didn't immigrate, they were already there.

Last week's article wasn't intended to be a lesson in history — only a profile of several Hispanic Americans serving as U.S. Marines at MCAS Kaneohe Bay.

Cuellar was correct about some Hispanic Americans not immigrating to the United States. After the Mexican-American War, those Mexicans who remained in California, Nevada, Utah, Arizona, and half of Colorado could not have immigrated... they were already there. But, since then, many Mexicans have immigrated to the United States.

SOFTBALL SUIT

The Summer Recreation Slowpitch Softball game contained several typos. HMM-265's Sgt Dennis Suit's last name should have read "Sult," and Caffero should have read, First Lieutenant John Caffiero.



At a glance

Military Camp

If you're looking for a weekend retreat or a place to spend a few days while on leave, try the Kilauea Military Camp Hawaii Recreation Area, on the island of Hawaii.

The camp is a rustic mountain resort for military families, located in the Hawaii Volcanoes National Park. It overlooks one of the most active volcanoes in the United States.

The resort offers activities such as bike and auto rentals, a theatre, nursery, guided bus and walking tours, package stores and a bowling alley. A library, cafeteria and lectures are also available.

For more information and reservations, call the resort office at 534-2826.

English and math classes

St. Louis High School is offering English and math courses for students interested in completing their high school requirements.

Registration for the October/November classes is Sept. 29-Oct. 8. For more information, call the Joint Education Center at 257-3572.

Sunset Parade

A sunset parade will be conducted at the Marine Barracks

Parade Grounds, Pearl Harbor Oct. 8 as part of the celebration of the Navy's 207th birthday. This year's reviewing officer will be Admiral Robert J. Long, Commander in Chief, Pacific.

Spectators are requested to be seated at 5:45 p.m. The program will begin with evening colors at 5:55 p.m. with the Fleet Marine Force, Pacific Band playing the national anthem.

School physicals

The Kaneohe Medical Clinic will offer school physical appointments Oct. 20. Appointments can be made by visiting the Immunization Clinic

for pre-screening matinee will be presented Oct. 10 starting during the following hours: Monday 8:30-11:15 a.m., 1-3:15 p.m.; Tuesday 8:30-11:15 a.m., 1-2:15 p.m.; Wednesday 8:30-11:15 a.m., 2-3:15 p.m.; Thursday 8:30-11:15 a.m.; Friday 8:30-11:15 a.m., 1-2:15 p.m.

GMAT The Graduate Management Admission Test will be given Oct. 15 at the Joint Education Center here, and is open to everyone.

Due to school physical appointments, The GMAT measures the general verbal and mathematical skills associated with graduate school in management. Test fees are \$30 and must be paid before the test date.

For more information on the GMAT, call the Marines Training Facility. A special First Lieutenant John Chester at 257-2061.

manoa chiropractic center
2nd Level Manoa Market Pl.
Hawaii Bank of Honolulu

- WORKERS COMPENSATION
- NO FAULT INSURANCE
- ATHLETIC INJURIES
- INDIVIDUALLY DESIGNED EXERCISE PROGRAMS

25% Military Discount

SPECIALIZING IN HEALTH MAINTENANCE AND PREVENTION OF DIS-EASE

Dr. Stephen A. Tarek 988-6113
2851 E. MANOA RD.

TLA SPECIAL
\$3500 plus tax
OUR HOTEL YOUR HOME BASE

Hotel Features Include

- Lei Maker's Garden Restaurant
- Kalama Lounge w/live entertainment
- Room Service
- Free Color TV
- Pool
- Babysitting Referrals
- Deluxe Air Conditioned Rooms
- Rental Cars Available
- 3 Hotel Laundromats
- Free 24 Hour Airport Shuttle Service
- Located on Bus Line minutes away from Military Installations, Major Attractions and Waikiki.

For Reservations And Information Call
836-0661
Holiday Inn
3401 Nimitz Hwy. Honolulu, HI 96819

SCHEDULED AIRLINES TICKET OFFICE (SATO)

Staffed by full time Airline personnel
To assist in your travel requirements

- Individual leave
- Family travel to the Mainland
- Neighbor Island
- International
- Dependent travel to West-PAC
- Fares
- Flight Information

Contact SATO for reservations and airline tickets at any one of our three convenient on base locations.

Pearl Harbor Bldg. 487 -- Tele: 422-0571
Office hours - Mon. thru Fri. 0730-1600

Camp Smith - Bldg. 2D - Tele: 487-1567
Office hours - Mon. thru Fri. 0800-1600

Kaneohe MCAS - Bldg. 209 -- Tele: 254-1564
Office hours - Mon. thru Fri. 0730-1530

CONTAINER SALE MICROWAVE OVENS

A CONTAINER OF NEW MICROWAVE OVENS HAVE ARRIVED FOR IMMEDIATE LIQUIDATION. ALL ARE REDUCED AT PRACTICALLY WHOLESALE COST!

5 DAYS ONLY!

INDIVIDUAL FEATURES INCLUDE:
ROTOWAVES
CAROUSELS
DIGITALS
PROBES

VALUES TO \$498
\$248
Limit 2 per customer

BUILT-IN BROWNER
218
Sug. Retail \$348

DIGITAL W/BROWNER & PROBE
398
Sug. Retail \$598

DIGITAL W/BROWNER & PROBE
498
Sug. Retail \$698

OUR GUARANTEE:
Simple, we guarantee you the lowest prices in Hawaii on any oven including military exchanges. This applies to the Microwave/Convection Ovens from SHARP & PANASONIC. In addition, we have 22 models on display.

PACIFIC SURPLUS & DISTRIBUTORS
CALL NOW 262-8131

Monday thru Saturday 9:30-6:00 pm
Thursday 9:30-9:00 pm
Sundays 11-5 pm
CLOSED TUESDAY

1247 F Pali Hwy. (1 block east of Castle Hospital in the new 7-Eleven Complex in Kailua)

SELECT FROM EITHER:
PANASONIC
TAPPAN
AMANA
LITTON

NOTICE
HAWAII CHILD CENTERS
DOOR-TO-DOOR PRESCHOOL TRANSPORTATION

HAWAII CHILD CENTER ENCHANTED LAKE
1425 Keolu Dr. Serving Enchanted Lake, Edna Logan Keolu Hills, Pohakapu, 262-4955 and Maunawili.

HAWAII CHILD CENTER KAILUA
1333 Mokuia Dr. Serving Kailua Town Janet Lee 261-9151

\$5 PER MONTH FOR ONE WAY TRIPS

Hawaii Child Centers, a non-profit educational organization with other Centers in Millam, Ewa Beach, Waimanalo, Salt Lake and the Windward Side.

SOFT CONTACT LENSES ARE:

- Soft, flexible and comfortable
- Easy to wear from the start
- Do not pop out easily

STANDARD SOFT LENSES \$95
CONTINUOUS WEAR LENSES \$195

fees include lenses, care kit, follow up care by Dr. Dean and 90 DAY TRIAL PERIOD. Effective until September 30, 1982

Also Available BIFOCAL SOFT LENSES
COMPLETE PROFESSIONAL VISION SERVICES
DEDICATED TO QUALITY AND SERVICE IN VISION CARE

Dr. Charles Dean Optometrist KAILUA 139 Hekili St. 261-9735

Fun in the sun and beach landings at Bellows

by Sgt Marie Woods
Photos by SSgt Lono Kollars

Whether it's camping, swimming, or amphibious landings, Bellows Air Force Station has training and recreational facilities to accommodate the military and civilian community.

Located on the Windward side of Oahu in the Waimanalo district, Bellows is approximately 13 miles from Marine Corps Air Station Kaneohe Bay.

Along with other Oahu-based military organizations MCAS and 1st Marine Brigade personnel use the facilities at Bellows for many types of training. Air, ground, and amphibious operations can be conducted there.

What makes Bellows important to the Marine Corps? It has the only beach on Oahu available for use in amphibious training, according to Air Force Tech Sergeant James Walker, director of recreation. "It's only a short trip across Kailua Bay from MCAS Kaneohe Bay's Fort Howe beach to the training site."

Training facilities there are divided into six separate areas. Areas 1A, 1B, 1C, make up the beachfront section, where all amphibious landings and exercises are conducted.

Areas two, three, and four are used for various training purposes with emphasis on small unit tactics, helicopter crew training, and communication/command post exercises. There is also an airstrip for

conducting daytime helicopter operations.

Some training deficiencies exist at Bellows. The area itself is limited in size and ordnance not allowed on the beachfront area. According to Walker, it's close proximity to the community of Waimanalo, prohibits live firing at the training sites.

Bellows, however, is primarily used as a recreation facility. The beachfront is divided by Waimanalo Stream that serves as a natural boundary between the first portion of the beach for use by the public and the second area for military personnel and their dependents only.

"We have 102 cottages located along 1 1/2 miles of beach," said Walker. These can be

rented for a nominal fee and are equipped with linen, televisions, dishes, utensils, pots and pans, and sleeps four to six people. Bath houses, picnic tables, and barbecue pits are also positioned along the beach.

Bellows also offers 37 family campsites and four larger sites for youth groups.

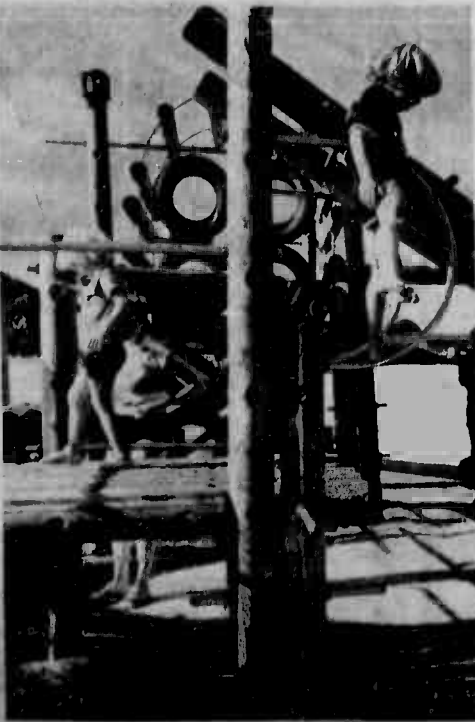
Outdoor sport enthusiasts will find a golf driving range, tennis courts, softball fields, and several fishing areas. In addition, the Marina, which has a fleet of Laser Class sailboats and one Hobie Cat, rents boogie boards, snorkles, masks and swim fins.

The base exchange, beachclub, and package store furnish necessities for people who use the recreation facilities.

An all-ranks club has a snack bar, dining room, lounge, and provides free movies to the approximately 53 military personnel permanently assigned to Bellows.

Active duty and retired members of the Armed Forces of the United States; Department of Defense civilians working for the Air Force in Hawaii and their dependents and guests may use the recreation facilities.

For reservations and more information about Bellows recreation facilities, contact the reservation office at 259-7271 (enlisted) or 259-9474 (officer), 8 a.m. to 6 p.m., Monday through Thursday; 8 a.m. to 8 p.m., Friday, and 9 a.m. to 6 p.m., Saturday, Sunday, and holidays.



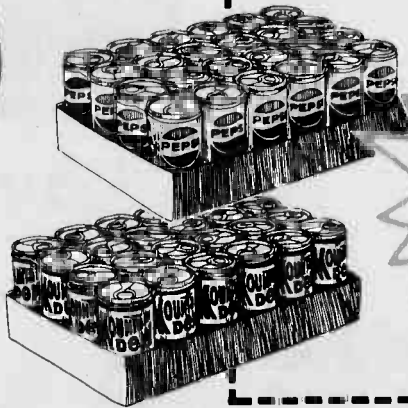
7-ELEVEN FREEDOM SUPER PRICES

All items plus tax,
while supply lasts!
SPECIALS
GOOD THRU TUESDAY
9/28/82

COLD
SOFT DRINKS



PEPSI-DIET PEPSI-PEPSI LIGHT-MOUNTAIN DEW



24 12-oz Cans
Reg. \$8.99
SAVE
\$2.60

629

With this coupon
Limit one case
per coupon
Offer good thru
9/28/82

-----VALUABLE COUPON-----



CRUSH SOFT DRINKS

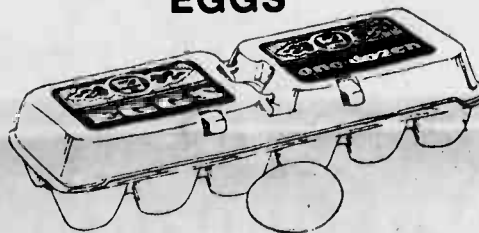
169

REG. \$2.79

6 pack
12-oz. Cans
Orange
Grape
Strawberry



**GRADE A
FRESH ISLAND
EGGS**



**OLD FASHION ICE CREAM
ALL FLAVORS**



109
Quart
REG. \$2.29

**GRANNY GOOSE
NATURAL CHIPS**

•Reg. •Dip •Unsalted 5 1/2 oz.

99

REG. \$1.59



109

Dozen
Medium Size
REG. \$1.39

**PURITY PORTUGUESE
SAUSAGE**



119
7 1/2 oz.
Mild & Hot
REG. \$1.89

Every Day Low Prices

COLD

**BUDWEISER AND
MILLER LITE**

1199
Case
24 12-oz.
Cans or Bottles



**CIGARETTES ALL
BRANDS
AND SIZES**

739
CARTON



MILK 1/2 GALLON

167
each



CHIPWICH
A Delicious Ice Cream Delight!

89 ¢
each

BIG GULP®
32 Ice Cold Fluid Ounces

69 ¢

The One Place Where Freedom and Super Prices Meet



LEAPS AND BOUNDS — Master Sergeant Andrew Deal, Station Operations and Maintenance Squadron's weather service chief, leaps up to block a shot from Gunnery Sergeant David Bratcher, SOMS administration chief, while team members look on. Deal's active life also includes volleyball, snorkeling, and running. He scored his 20th perfect physical fitness test May 23. (Photo by Sgt Chris Taylor)

Fitness ace believes in technique

by Sgt Marie Woods

He has 100 yards left to reach the finish line. Sweat is pouring off his face. His breathing is rapid, and his feet hurt, but he says to himself, "push past it, push past it."

With a burst of speed, Master Sergeant Andrew Deal, weather service chief for Station Operations and Maintenance Squadron here crossed the finish line of the three mile run with a time of 17:50. Along with 20 pull-ups and 80 sit-ups, his finished time marked the 20th perfect physical fitness test (PFT) for the 38 year old Marine. The date was May 23.

He scored his first perfect PFT when he was stationed in Tustin, Calif., in 1973. "Once you get 300 you can no longer settle for anything less, because you have to prove to yourself it wasn't a fluke," said Deal.

Deal, 5 feet 10 inches tall, tanned and slender, first became interested in physical fitness in Okinawa in 1971. He was 26 years old and joined a boxing team there. "I saw so many guys go into the ring. By the end of the third round they were so tired they couldn't get their hands up to protect themselves," said Deal. "That's pretty scary, so I became active in boxing." After his first year, he won the Far East Middleweight Championship.

A short time later the Marine Corps changed the PFT requirements for males to the ones used now, consisting of pull-ups, sit-ups, and the three mile run. Deal, tired of boxing, began concentrating his efforts on the PFTs.

"Once you get 300 you can no longer settle for anything less, because you have to prove to yourself it wasn't a fluke."

The first time he took that PFT, he could only do nine pull-ups. "I thought to myself, this doesn't make sense," said Deal. "I have strength in my arms and can fight up to 10 rounds, but couldn't do 20 pull-ups. That's when I really started developing myself for it." "Being physically fit is part of being a Marine and that's my job."

To prepare for a PFT, Deal eats meat, preferably steak, with his breakfast the day before. On the morning of the PFT, he'll drink a cup of tea with four teaspoons of honey to give him energy. Deal isn't sure if drinking tea with honey for energy is psychological or actually beneficial, but whatever it does for him, he still scores 300.

Deal also tries to run about three days a week, between four and six miles each time. The best surface to run on is dirt and grass, according to Deal. "It may slow down your time, but it's easier on your body," he said. "I have bone spurs on both heels and running on concrete irritates them."

Deal too plays basketball with some of the Marines he works with during his lunch hour. He enjoys snorkeling, volleyball, and sometimes on the weekends he runs with his wife, Miyo. They also go backpacking together.

One thing Deal believes strongly in, for doing well on a PFT, is technique. "You have to be comfortable and relaxed to concentrate," he said. "You can easily psyche yourself down just like you can psyche yourself up."

Deal's reason for attaining good physical fitness is leadership. He feels that setting an example is an important part of leadership. "I go to a PFT with a positive attitude, and try to pass that attitude on to the people out there with me," he said.

Although Deal says he's in better shape now than when he

first came into the Corps, continually scoring perfect PFTs has never been easy for him. "Most people don't understand that there's a night and day difference between scoring 299 and 300," he said. "That extra 10 seconds, or one pull-up or sit-up, really counts."

Besides staying physically fit, Deal is working on a degree in Business Management and has five classes left in his present course to earn it. After 21 years in the Corps he is also looking forward to joining the Honolulu Police Department. He retires in January, and will attend eight months of training classes with HPD.

His attitude towards physical fitness seems to have paid off. According to Deal, most applicants for HPD are 22 years old. "I'll be a few years older than that when I join," he said. "But my philosophy is, if you really want to, you can do anything."

Attention Military Personnel

QUALITY VALVE GRINDING

Any American or Foreign Car cylinder head hot tank, glass bead, reface valves, reset and resurface heads.

20% OFF

Retail labor price with the purchase of cylinder head gasket set WITH THIS AD

AIKAI 254-3535 KAILUA 262-8146
Aikahi Shopping Center 119 Hekili Street

TAX SCHOOL

BASIC KNOWLEDGE IN

- Personal Income Tax Preparation & Planning (State & Federal)
- Employment Possibilities
- Understanding Forms & Principals

8 WEEKS NIGHT CLASSES
6:30-9:30

Begins Oct. 12th

For More Info
Phone 262-0708

OLIVE SOUZA

Bookkeeping & Tax Service Kailua

OKTOBERFEST!

Event Of The Year

September 30, October 1, 2 & 3
Phone: 955-0355

PFAFF Salutes NATIONAL SEWING MONTH

SAVE UP TO 25% Every Pfaff in Stock

Join the Pfaff Savings Celebration

Now is the time to treat yourself to the Pfaff sewing machine you've always wanted.

Savings apply to all Pfaff models.

HURRY IN!
Sale ends September 30.

Come in for a FREE Demonstration.

STANLEY SEWING CENTER

KALIHI
847-2211
1270 N. King St.
(Across from Kapalama Post Office)

KAILUA
261-2020
155 Hekili St.
(Across from Holiday Mart)

SAFEWAY Where Everything's Right Including The Price

Assorted Pork Chops (Chop Suey Pork lb. \$2.39) \$1.99 lb.	Pink Salmon Whole Frozen Or Thawed (Halves lb. \$1.59) (Fillets or Slices lb. \$1.99) \$1.49 lb.	Standing Rib Roast Large End (Small End lb. \$3.39) \$2.79 lb.	Tide Detergent 49 oz. 15c Off Label Limit 2 \$2.29 SUPER SPECIAL	Campbells Tomato Soup 10.75 oz. 3 for 89¢ SUPER SPECIAL
Round Steaks Full Cut Boneless (Teriyaki Steak lb. \$3.99) \$2.39 lb.	Beef Oxtails Cut-Up Frozen or Thawed (Honeycomb Tripe lb. 99c) \$1.49 lb.	Beef Shortribs Frozen Korean Style (Thin Cut Strips lb. \$1.49) \$1.49 lb.	12 oz. 6 Pack Cans (Limit 2 Cases) \$1.79 SUPER SPECIAL	Calrose Rice 25 lb. Minode or Town House Limit 2 \$4.79 SUPER SPECIAL
Oscar Mayer Franks Meat or Beef lb. \$1.99	Spencer Steaks Safeway Quality Beef lb. \$5.49		Natural Ice Cream 1/2 Gallon Gourmet \$2.79 SUPER SPECIAL	Coral Tuna 6.5 oz. (Limit 2) 89¢ SUPER SPECIAL
Fresh Broccoli U.S. No. 1 Fresh Buds Available Wednesday P.M. 59¢ lb.	Papayas Hawaii Grade A 59¢ lb.	New Crop Apples Washington Red Delicious, Jonathans, California Golden or Pippins 49¢ lb.	Tokay Grapes U.S. No. 1 Fresh New Crop Crisp and Sweet 59¢ lb.	Lucerne Yogurt 8 oz. Prestir or Low Fat 2 for 89¢ SUPER SPECIAL
				Medium Eggs Grade A Lucerne Mainland Shelltreated Dozen 99¢ SUPER SPECIAL

YOUR SPECIAL STORE ...

Items and prices in this ad are effective Sept. 22-25, 1982

848 Ala Lihua St. Honolulu
1171 S. Seward St. Honolulu
2825 S. Moana Dr. Honolulu
1000 Pali Highway, Honolulu

88 1277 Kalia Highway, Ala Moana
1000 Kalia Dr. Kailua
45 985 Kalia Highway, Kaneohe
25 Kaneohe Bay Drive, Kaneohe

SAFEWAY



CHOWTIME — A leatherneck cadet enjoys his canned lunch while on patrol at Camp Lejeune, N.C. (Photo by Christopher P. Grey)

New Haven cadets visit Camp Lejeune, challenge tough Marine Corps training

by Sgt Christopher P. Grey

CAMP LEJEUNE, N.C. — Camp Lejeune Marines got an early glimpse of the Corps' future last week. Sixty highly motivated Marine Corps Cadets, commanded by Cadet Captain Anthony J. Debiase, a former Marine sergeant, assaulted the base in full combat kit recently challenging adult Marines to put them through a series of hectic training paces.

The mini-Marines from New Haven, Conn., are members of the "oldest continuous Marine youth group of its kind in the country," according to Debiase.

Unlike many other tour groups that frequent Camp Lejeune to sight-see or reminisce, the youngsters ranging in age from 8-18 were here for a rugged version of a busman's holiday. The

kids were full of questions and anxious to learn all they could about their older, active-duty counterparts.

Aside from their size, it was difficult to tell them apart from any other Marine at Camp Lejeune. Complete with dog tags, identification cards and service record books, these cadets are members of a mini-Marine Corps within itself. They have their own administrative section that handles paperwork; two 1952 fully tactical M-38 Studebaker trucks restored completely by the cadets; and for their NCO's, sets of dress greens.

SOME WERE OLD SALTS ON A second or third visit to Camp Lejeune. They wanted to get things started off right, Marine-wise. Veteran cadets, with young boots close on their spit-shined heels, stopped by a barber shop for skin tight regulation haircuts.

"We are a strictly volunteer organization," explained Debiase. "The city of New Haven gives us \$3,000 a year out of their Community Development Act and every penny of it goes to the kids."

The trip to North Carolina this year cost the organization almost \$6,000. Coming up with the \$165 per child is pretty tough for some families, so an alternate plan of attack was devised.

"We have quite a melting pot of kids in this group," said Debiase. "Just like in the real Corps — we have people from the ghetto and the plush town houses, so we came up with a fund-raising plan. A few car washes, a dance and some other activities helped us pay our way. We worked it so each kid that helped on the different projects received a portion of the profits. If they helped on all of them they had their \$165 right there."

DEBIASE EXPLAINED THE units treasury won't support any high-volume recruiting efforts. They rely mostly on word of mouth which seems sufficient to keep the ranks filled. To join the outfit kids simply submit an application. Once accepted, they can go through recruit training, which consists of attending classes three hours a week for 12 weeks.

"We stress discipline and general military knowledge," explained Debiase. "Friday night training is complete with drill and inspections. We even have our own revised edition of the Guidebook for Marines. At the end of the 12-week boot camp we even have a graduation. 'The kids have to want to be with our group. We aren't terribly hard on them, but we do demand a lot of discipline. We want kids who want to be here.'"

Crimestop

PMO 257-2123

ALA MOANA • PEARLRIDGE • KANEHOHE
Sears Portrait Studio
BABIES • CHILDREN • ADULTS • FAMILY GROUPS

touch a loved one

Far away or near, someone you love is anxious to see your child's changes, so for a special occasion or just because... share today with professional keepsake portraits taken at Sears.



23 color portraits **14.95** total
includes 95¢ deposit

No age limit. Photographic portrait package includes two 8x10s, three 5x7s, 15 wallet size, and 3 color miniatures in charms. 95¢ for each add'l. subject in portrait. Choice of backgrounds. Pines our selection.

Now Thru Saturday, September 25.

ALA MOANA • 947-0545
PEARLRIDGE • 487-4397
KANEHOHE • 247-8384

Call Your Nearest Store for Studio Hours

INSTANT PASSPORT PHOTOS **Sears** COPY AND RESTORATION
Ask about Sears Charge Satisfaction guaranteed or your money back.

THE AMERICAN CONNECTION!



Convenience to the East and all across the mainland. More and more of Hawaii's military travelers are finding that American Airlines is a great way to travel all across the mainland.

We've got great connections. Whether you're headed home, to your next base or on vacation, you can fly from Honolulu on any of American's widebody non-stop flights to San Francisco, Los Angeles or Dallas-Fort Worth. And from these cities, American offers over 250 flights daily to more than 60 other cities all across the mainland. Add our international destinations in Canada, the Caribbean, the Bahamas, Mexico and London and you've got some of the best connections going.

Special low military fares. As an American serving with the military you are entitled to fly American Airlines at

specially discounted military fares with confirmed reservations. Additional low fares such as super saver and excursion fares may also apply.

We're giving you our best. Wherever you're going, American will get you there with the kind of service that makes American Airlines, time after time, the preferred choice of frequent flyers. We make traveling easy with our convenient pre-reserved seating, one-stop check-in and round trip and connecting boarding passes all issued right here in Honolulu for your entire trip.

Next time you say aloha to Hawaii use the American Connection with our special low military fares. Contact your SATO office or call American Airlines. On Oahu, 526-0044. From all Neighbor Islands call 1 (800) 232-0980.

We're American Airlines. Doing what we do best.

American

When the kids go back to school, start a new life.

LOSE UP TO A POUND A DAY

Without hunger
While losing up to 30 pounds in 30 days
you'll be enjoying delicious, satisfying
Nutri/System portion and calorie controlled meals, cereals, soups, snacks, smoothies and meatballs, chicken, a la king, even puddings and milkshakes.

Failure proof
You can't make mistakes because there's no fasting, counting calories, measuring or weighing foods. No strenuous exercise. No drugs or injections.

Trained supervision
The professional Nutri/System Weight Loss Consultants give you all the help, support and counseling you need. Behavior Education teaches you how to stay slim. And the free Maintenance Program helps keep the weight off forever.

The "Weightmaster" guarantee
Follow the Nutri/System program and you must reach the goal or get your money back. Weightmaster - Compromise or there's no additional charge for our services until you do.
CALL TODAY FOR A FREE, NO-OBLIGATION CONSULTATION.



CALL TODAY FOR A FREE, NO-OBLIGATION CONSULTATION

nutri/system
weight loss centers
Over 550 Centers Nationwide
KAILUA
254-5811
Pali Palms Plaza
970 North Kelaheo Ave., Suite A 105
AINA-HAINA
373-2101
Aina-Haina Professional Bldg.
850 West Hina Drive Suite 110
PEARL CITY
488-1919
88-1254 Keahumanu
Suite 101
Times Square Shopping Center
As people vary, so do their weight needs.



HQMC News

Uniform board changes

WASHINGTON — In its most recent meeting, the Permanent Marine Corps Uniform Board made some significant changes and decisions on numerous uniform regulations.

Here are some of them:

— A 75 percent polyester/25 percent wool shirt will be adopted as a replacement for the current 65 percent polyester/35 percent cotton shirt now in the supply system. It could be at least two years before the new shirts come into the system, according to Board members.

— The service frame cap will not be re-adopted for recruit issue.

— Marines may not wear their doubleknit uniforms after Oct. 1, 1983.

— Women Marines will soon be authorized to wear small (about 1/4 inch) spherical white pearl or pearl-like earrings with the dress uniform "for social occasions."

— Women may no longer wear slacks unless they are performing duties that require running or climbing or would make wearing of the skirt impractical or immodest. They may wear slacks under extreme weather conditions when utilities are not worn; when riding in a government airplane configured for cargo; while driving a government vehicle, such as a truck, when the utility uniform is not

considered necessary or appropriate; or when specifically prescribed for ceremonial formations, parades or other ceremonies. Women must wear oxfords with slacks, not pumps.

— After Oct. 1, women Marines may not wear the beret. — Enlisted women may not wear serge dress blues after Jan. 1, 1985.

The board's decisions will become effective when implementing directives are mailed to the field.

Annual photo contest

WASHINGTON — The U.S. Naval Institute's annual naval and maritime photo contest is under way. The contest is open to all civilian and military people, and both amateur and professional photographers may participate. Entries must pertain to naval or maritime subjects and may be black and white prints, color photographs or color transparencies.

Awards of \$100 each will be given to the top 10 photographs selected by the institute as prize winners. Winning photos will be published in *Proceedings*, the monthly magazine published by the Naval Institute, and will be displayed at the institute's annual meeting.

Deadline for entries is Dec. 31, 1982. Contest rules are available by contacting the Membership Services Department, U.S. Naval Institute, Annapolis, Md. 21402, phone (301) 268-6110.

FREE

**POSTURAL ANALYSIS
AND CONSULTATION**



**Pacific
Chiropractic**

DANGER SIGNALS—

1. Frequent Headaches
2. Low Back or Hip Pain
3. Dizziness or Loss of Sleep
4. Numbness in Hands or Feet
5. Nervousness
6. Neck Pain or Stiffness
7. Arm and Shoulder Pain



J.C. Michalis, D.C.



J.B. Manning, D.C.

602 KAILUA RD.
SUITE #207

PHONE
261-0831

THE CROWBAR

Third Anniversary
Sept. 23 - Oct 3

happy hour 10-8pm daily
dollar beer
drink o' day a dollar

guest artists during celebration 9-Jan.

Open daily 10-2 a.m. 261-0065

Munchie Menu

27 hoolai - kailua

Godfather's Pizza

Please present this coupon for discount.

ANY LARGE PIZZA

\$2.00 OFF

\$1.00 OFF ANY MEDIUM PIZZA

Stadium Mall 487-0032

NEW LOCATION
1 Block Diamond Head
Of Kulo Theatre

2139 Kuhlo Ave.
922-5748

MAINLINER and TRAVEL HOLIDAY Award Winners

L'Auberge

French Cuisine

Superb Dining In A
Charming Country
French Manner

RESERVATIONS
AFTER 2 P.M.

Open:
Wed. thru Sun.
6 p.m. to 10 p.m.

117 HEKILI
STREET,
KAILUA

Your Hosts -
Marcel & Elvi Baltzer

262-4835

Free degree.

The Marine Corps gives you plenty of educational opportunities. If you can qualify, you could earn a college degree free!

You can count on the Corps.

GET OUT OF DEBT

through Chapter 13
A federal law which helps to pay off your debts without borrowing and in payments you can afford, stops creditor harassment and law suits, protects your job, co-signers and property. Information packet without obligation.

Please call:

HOWARD Y. TANAKA

Attorney versed in Chapter 13 filings

Suite 703, Ala Bishop Bldg
1136 Union Mall, Honolulu

Phone: 526-1544

CONSOLIDATED THEATRES

KAM DRIVE-IN "SUPER" SWAP MEET

EVERY WED. THUR. SAT. & SUN. 7 AM to 3 PM • 488-5822

WALKER
800-224-2244
In 70mm/Stereo
SORRY, NO PASSES
12:45 • 3:00
8:30 • 8:15 & 10:30 PM

KAM DRIVE-IN
800-224-2244
In 70mm/Stereo
TOUGH ALL OVER (R)
7:00 & 10:45 PM
STRIPES (R)
8:45 PM Only
Gates Open at 8:15 PM

WALKER
800-224-2244
In 70mm/Stereo
"PINK FLOYD THE WALL" (R)
12:30 • 2:30 • 4:30
8:30 • 8:45 & 10:45 PM

PEARLBRIDGE
800-224-2244
In 70mm/Stereo
"CONCRETE JUNGLE" (R)
12:30 • 2:30 • 4:30
8:30 • 8:45 & 10:45 PM
Show Starts at 7:00 PM

KAM DRIVE-IN
800-224-2244
In 70mm/Stereo
"PINK FLOYD THE WALL" (R)
12:30 • 2:30 • 4:30
8:30 • 8:45 & 10:45 PM

PEARLBRIDGE
800-224-2244
In 70mm/Stereo
"CONCRETE JUNGLE" (R)
12:30 • 2:30 • 4:30
8:30 • 8:45 & 10:45 PM
Show Starts at 7:00 PM

KAM DRIVE-IN
800-224-2244
In 70mm/Stereo
"PINK FLOYD THE WALL" (R)
12:30 • 2:30 • 4:30
8:30 • 8:45 & 10:45 PM

PEARLBRIDGE
800-224-2244
In 70mm/Stereo
"CONCRETE JUNGLE" (R)
12:30 • 2:30 • 4:30
8:30 • 8:45 & 10:45 PM
Show Starts at 7:00 PM

KAM DRIVE-IN
800-224-2244
In 70mm/Stereo
"PINK FLOYD THE WALL" (R)
12:30 • 2:30 • 4:30
8:30 • 8:45 & 10:45 PM

PEARLBRIDGE
800-224-2244
In 70mm/Stereo
"CONCRETE JUNGLE" (R)
12:30 • 2:30 • 4:30
8:30 • 8:45 & 10:45 PM
Show Starts at 7:00 PM

KAM DRIVE-IN
800-224-2244
In 70mm/Stereo
"PINK FLOYD THE WALL" (R)
12:30 • 2:30 • 4:30
8:30 • 8:45 & 10:45 PM

PEARLBRIDGE
800-224-2244
In 70mm/Stereo
"CONCRETE JUNGLE" (R)
12:30 • 2:30 • 4:30
8:30 • 8:45 & 10:45 PM
Show Starts at 7:00 PM

KAM DRIVE-IN
800-224-2244
In 70mm/Stereo
"PINK FLOYD THE WALL" (R)
12:30 • 2:30 • 4:30
8:30 • 8:45 & 10:45 PM

PEARLBRIDGE
800-224-2244
In 70mm/Stereo
"CONCRETE JUNGLE" (R)
12:30 • 2:30 • 4:30
8:30 • 8:45 & 10:45 PM
Show Starts at 7:00 PM

KAM DRIVE-IN
800-224-2244
In 70mm/Stereo
"PINK FLOYD THE WALL" (R)
12:30 • 2:30 • 4:30
8:30 • 8:45 & 10:45 PM

PEARLBRIDGE
800-224-2244
In 70mm/Stereo
"CONCRETE JUNGLE" (R)
12:30 • 2:30 • 4:30
8:30 • 8:45 & 10:45 PM
Show Starts at 7:00 PM

KAM DRIVE-IN
800-224-2244
In 70mm/Stereo
"PINK FLOYD THE WALL" (R)
12:30 • 2:30 • 4:30
8:30 • 8:45 & 10:45 PM

PEARLBRIDGE
800-224-2244
In 70mm/Stereo
"CONCRETE JUNGLE" (R)
12:30 • 2:30 • 4:30
8:30 • 8:45 & 10:45 PM
Show Starts at 7:00 PM

KAM DRIVE-IN
800-224-2244
In 70mm/Stereo
"PINK FLOYD THE WALL" (R)
12:30 • 2:30 • 4:30
8:30 • 8:45 & 10:45 PM

PEARLBRIDGE
800-224-2244
In 70mm/Stereo
"CONCRETE JUNGLE" (R)
12:30 • 2:30 • 4:30
8:30 • 8:45 & 10:45 PM
Show Starts at 7:00 PM

KAM DRIVE-IN
800-224-2244
In 70mm/Stereo
"PINK FLOYD THE WALL" (R)
12:30 • 2:30 • 4:30
8:30 • 8:45 & 10:45 PM

PEARLBRIDGE
800-224-2244
In 70mm/Stereo
"CONCRETE JUNGLE" (R)
12:30 • 2:30 • 4:30
8:30 • 8:45 & 10:45 PM
Show Starts at 7:00 PM

KAM DRIVE-IN
800-224-2244
In 70mm/Stereo
"PINK FLOYD THE WALL" (R)
12:30 • 2:30 • 4:30
8:30 • 8:45 & 10:45 PM

PEARLBRIDGE
800-224-2244
In 70mm/Stereo
"CONCRETE JUNGLE" (R)
12:30 • 2:30 • 4:30
8:30 • 8:45 & 10:45 PM
Show Starts at 7:00 PM

KAM DRIVE-IN
800-224-2244
In 70mm/Stereo
"PINK FLOYD THE WALL" (R)
12:30 • 2:30 • 4:30
8:30 • 8:45 & 10:45 PM

PEARLBRIDGE
800-224-2244
In 70mm/Stereo
"CONCRETE JUNGLE" (R)
12:30 • 2:30 • 4:30
8:30 • 8:45 & 10:45 PM
Show Starts at 7:00 PM

KAM DRIVE-IN
800-224-2244
In 70mm/Stereo
"PINK FLOYD THE WALL" (R)
12:30 • 2:30 • 4:30
8:30 • 8:45 & 10:45 PM

PEARLBRIDGE
800-224-2244
In 70mm/Stereo
"CONCRETE JUNGLE" (R)
12:30 • 2:30 • 4:30
8:30 • 8:45 & 10:45 PM
Show Starts at 7:00 PM

KAM DRIVE-IN
800-224-2244
In 70mm/Stereo
"PINK FLOYD THE WALL" (R)
12:30 • 2:30 • 4:30
8:30 • 8:45 & 10:45 PM

PEARLBRIDGE
800-224-2244
In 70mm/Stereo
"CONCRETE JUNGLE" (R)
12:30 • 2:30 • 4:30
8:30 • 8:45 & 10:45 PM
Show Starts at 7:00 PM

KAM DRIVE-IN
800-224-2244
In 70mm/Stereo
"PINK FLOYD THE WALL" (R)
12:30 • 2:30 • 4:30
8:30 • 8:45 & 10:45 PM

PEARLBRIDGE
800-224-2244
In 70mm/Stereo
"CONCRETE JUNGLE" (R)
12:30 • 2:30 • 4:30
8:30 • 8:45 & 10:45 PM
Show Starts at 7:00 PM

KAM DRIVE-IN
800-224-2244
In 70mm/Stereo
"PINK FLOYD THE WALL" (R)
12:30 • 2:30 • 4:30
8:30 • 8:45 & 10:45 PM

PEARLBRIDGE
800-224-2244
In 70mm/Stereo
"CONCRETE JUNGLE" (R)
12:30 • 2:30 • 4:30
8:30 • 8:45 & 10:45 PM
Show Starts at 7:00 PM

KAM DRIVE-IN
800-224-2244
In 70mm/Stereo
"PINK FLOYD THE WALL" (R)
12:30 • 2:30 • 4:30
8:30 • 8:45 & 10:45 PM

PEARLBRIDGE
800-224-2244
In 70mm/Stereo
"CONCRETE JUNGLE" (R)
12:30 • 2:30 • 4:30
8:30 • 8:45 & 10:45 PM
Show Starts at 7:00 PM

KAM DRIVE-IN
800-224-2244
In 70mm/Stereo
"PINK FLOYD THE WALL" (R)
12:30 • 2:30 • 4:30
8:30 • 8:45 & 10:45 PM

PEARLBRIDGE
800-224-2244
In 70mm/Stereo
"CONCRETE JUNGLE" (R)
12:30 • 2:30 • 4:30
8:30 • 8:45 & 10:45 PM
Show Starts at 7:00 PM

KAM DRIVE-IN
800-224-2244
In 70mm/Stereo
"PINK FLOYD THE WALL" (R)
12:30 • 2:30 • 4:30
8:30 • 8:45 & 10:45 PM

PEARLBRIDGE
800-224-2244
In 70mm/Stereo
"CONCRETE JUNGLE" (R)
12:30 • 2:30 • 4:30
8:30 • 8:45 & 10:45 PM
Show Starts at 7:00 PM

KAM DRIVE-IN
800-224-2244
In 70mm/Stereo
"PINK FLOYD THE WALL" (R)
12:30 • 2:30 • 4:30
8:30 • 8:45 & 10:45 PM

PEARLBRIDGE
800-224-2244
In 70mm/Stereo
"CONCRETE JUNGLE" (R)
12:30 • 2:30 • 4:30
8:30 • 8:45 & 10:45 PM
Show Starts at 7:00 PM

KAM DRIVE-IN
800-224-2244
In 70mm/Stereo
"PINK FLOYD THE WALL" (R)
12:30 • 2:30 • 4:30
8:30 • 8:45 & 10:45 PM

PEARLBRIDGE
800-224-2244
In 70mm/Stereo
"CONCRETE JUNGLE" (R)
12:30 • 2:30 • 4:30
8:30 • 8:45 & 10:45 PM
Show Starts at 7:00 PM

KAM DRIVE-IN
800-224-2244
In 70mm/Stereo
"PINK FLOYD THE WALL" (R)
12:30 • 2:30 • 4:30
8:30 • 8:45 & 10:45 PM

PEARLBRIDGE
800-224-2244
In 70mm/Stereo
"CONCRETE JUNGLE" (R)
12:30 • 2:30 • 4:30
8:30 • 8:45 & 10:45 PM
Show Starts at 7:00 PM

KAM DRIVE-IN
800-224-2244
In 70mm/Stereo
"PINK FLOYD THE WALL" (R)
12:30 • 2:30 • 4:30
8:30 • 8:45 & 10:45 PM

PEARLBRIDGE
800-224-2244
In 70mm/Stereo
"CONCRETE JUNGLE" (R)
12:30 • 2:30 • 4:30
8:30 • 8:45 & 10:45 PM
Show Starts at 7:00 PM

KAM DRIVE-IN
800-224-2244
In 70mm/Stereo
"PINK FLOYD THE WALL" (R)
12:30 • 2:30 • 4:30
8:30 • 8:45 & 10:45 PM

PEARLBRIDGE
800-224-2244
In 70mm/Stereo
"CONCRETE JUNGLE" (R)
12:30 • 2:30 • 4:30
8:30 • 8:45 & 10:45 PM
Show Starts at 7:00 PM

KAM DRIVE-IN
800-224-2244
In 70mm/Stereo
"PINK FLOYD THE WALL" (R)
12:30 • 2:30 • 4:30
8:30 • 8:45 & 10:45 PM

PEARLBRIDGE
800-224-2244
In 70mm/Stereo
"CONCRETE JUNGLE" (R)
12:30 • 2:30 • 4:30
8:30 • 8:45 & 10:45 PM
Show Starts at 7:00 PM

KAM DRIVE-IN
800-224-2244
In 70mm/Stereo
"PINK FLOYD THE WALL" (R)
12:30 • 2:30 • 4:30
8:30 • 8:45 & 10:45 PM

PEARLBRIDGE
800-224-2244
In 70mm/Stereo
"CONCRETE JUNGLE" (R)
12:30 • 2:30 • 4:30
8:30 • 8:45 & 10:45 PM
Show Starts at 7:00 PM

KAM DRIVE-IN
800-224-2244
In 70mm/Stereo
"PINK FLOYD THE WALL" (R)
12:30 • 2:30 • 4:30
8:30 • 8:45 & 10:45 PM

PEARLBRIDGE
800-224-2244
In 70mm/Stereo
"CONCRETE JUNGLE" (R)
12:30 • 2:30 • 4:30
8:30 • 8:45 & 10:45 PM
Show Starts at 7:00 PM

KAM DRIVE-IN
800-224-2244
In 70mm/Stereo
"PINK FLOYD THE WALL" (R)
12:30 • 2:30 • 4:30
8:30 • 8:45 & 10:45 PM

PEARLBRIDGE
800-224-2244
In 70mm/Stereo
"CONCRETE JUNGLE" (R)
12:30 • 2:30 • 4:30
8:30 • 8:45 & 10:45 PM
Show Starts at 7:00 PM

KAM DRIVE-IN
800-224-2244
In 70mm/Stereo
"PINK FLOYD THE WALL" (R)
12:30 • 2:30 • 4:30
8:30 • 8:45 & 10:45 PM

PEARLBRIDGE
800-224-2244
In 70mm/Stereo
"CONCRETE JUNGLE" (R)
12:30 • 2:30 • 4:30
8:30 • 8:45 & 10:45 PM
Show Starts at 7:00 PM

KAM DRIVE-IN
800-224-2244
In 70mm/Stereo
"PINK FLOYD THE WALL" (R)
12:30 • 2:30 • 4:30
8:30 • 8:45 & 10:45 PM

PEARLBRIDGE
800-224-2244
In 70mm/Stereo
"CONCRETE JUNGLE" (R)
12:30 • 2:30 • 4:30
8:30 • 8:45 & 10:45 PM
Show Starts at 7:00 PM

KAM DRIVE-IN
800-224-2244
In 70mm/Stereo
"PINK FLOYD THE WALL" (R)
12:30 • 2:30 • 4:30
8:30 • 8:45 & 10:45 PM

PEARLBRIDGE
800-224-2244
In 70mm/Stereo
"CONCRETE JUNGLE" (R)
12:30 • 2:30 • 4:30
8:30 • 8:45 & 10:45 PM
Show Starts at 7:00 PM

KAM DRIVE-IN
800-224-2244
In 70mm/Stereo
"PINK FLOYD THE WALL" (R)
12:30 • 2:30 • 4:30
8:30 • 8:45 & 10:45 PM

PEARLBRIDGE
800-224-2244
In 70mm/Stereo
"CONCRETE JUNGLE" (R)
12:30 • 2:30 • 4:30
8:30 • 8:45 & 10:45 PM
Show Starts at 7:00 PM

KAM DRIVE-IN
800-224-2244
In 70mm/Stereo
"PINK FLOYD THE WALL" (R)
12:30 • 2:30 • 4:30
8:30 • 8:45 & 10:45 PM

PEARLBRIDGE
800-224-2244
In 70mm/Stereo
"CONCRETE JUNGLE" (R)
12:30 • 2:30 • 4:30
8:30 • 8:45 & 10:45 PM
Show Starts at 7:00 PM

KAM DRIVE-IN
800-224-2244
In 70mm/Stereo
"PINK FLOYD THE WALL" (R)
12:30 • 2:30 • 4:30
8:30 • 8:45 & 10:45 PM

PEARLBRIDGE
800-224-2244
In 70mm/Stereo
"CONCRETE JUNGLE" (R)
12:30 • 2:30 • 4:30
8:30 • 8:45 & 10:45 PM
Show Starts at 7:00 PM

KAM DRIVE-IN
800-224-2244
In 70mm/Stereo
"PINK FLOYD THE WALL" (R)
12:30 • 2:30 • 4:30
8:30 • 8:45 & 10:45 PM

PEARLBRIDGE
800-224-2244
In 70mm/Stereo
"CONCRETE JUNGLE" (R)
12:30 • 2:30 • 4:30
8:30 • 8:45 & 10:45 PM
Show Starts at 7:00 PM

KAM DRIVE-IN
800-224-2244
In 70mm/Stereo
"PINK FLOYD THE WALL" (R)
12:30 • 2:30 • 4:30
8:30 • 8:45 & 10:45 PM

PEARLBRIDGE
800-224-2244
In 70mm/Stereo
"CONCRETE JUNGLE" (R)
12:30 • 2:30 • 4:30
8:30 • 8:45 & 10:45 PM
Show Starts at 7:00 PM

KAM DRIVE-IN
800-224-2244
In 70mm/Stereo
"PINK FLOYD THE WALL" (R)
12:30 • 2:30 • 4:30
8:30 • 8:45 & 10:45 PM

PEARLBRIDGE
800-224-2244
In 70mm/Stereo
"CONCRETE JUNGLE" (R)
12:30 • 2:30 • 4:30
8:30 • 8:45 & 10:45 PM
Show Starts at 7:00 PM

KAM DRIVE-IN
800-224-2244
In 70mm/Stereo
"PINK FLOYD THE WALL" (R)
12:30 • 2:30 • 4:30
8:30 • 8:45 & 10:45 PM

PEARLBRIDGE
800-224-2244
In 70mm/Stereo
"CONCRETE JUNGLE" (R)
12:30 • 2:30 • 4:30
8:30 • 8:45 & 10:45 PM
Show Starts at 7:00 PM

KAM DRIVE-IN
800-224-2244
In 70mm/Stereo
"PINK FLOYD THE WALL" (R)
12:30 • 2:30 • 4:30
8:30 • 8:45 & 10:45 PM

PEARLBRIDGE
800-224-2244
In 70mm/Stereo
"CONCRETE JUNGLE" (R)
12:30 • 2:30 • 4:30
8:30 • 8:45 & 10:45 PM
Show Starts at 7:00 PM

KAM DRIVE-IN
800-224-2244
In 70mm/Stereo
"PINK FLOYD THE WALL" (R)
12:30 • 2:30 • 4:30
8:30 • 8:45 & 10:45 PM

PEARLBRIDGE
800-224-2244
In 70mm/Stereo
"CONCRETE JUNGLE" (R)
12:30 • 2:30 • 4:30
8:30 • 8:45 & 10:45 PM
Show Starts at 7:00 PM

KAM DRIVE-IN
800-224-2244
In 70mm/Stereo
"PINK FLOYD THE WALL" (R)
12:30 • 2:30 • 4:30
8:30 • 8:45 & 10:45 PM

PEARLBRIDGE
800-224-2244
In 70mm/Stereo
"CONCRETE JUNGLE" (R)
12:30 • 2:30 • 4:30
8:30 • 8:45 & 10:45 PM
Show Starts at 7:00 PM

KAM DRIVE-IN
800-224-2244
In 70mm/Stereo
"PINK FLOYD THE WALL" (R)
12:30 • 2:30 • 4:30
8:30 • 8:45 & 10:45 PM

PEARLBRIDGE
800-224-2244
In 70mm/Stereo
"CONCRETE JUNGLE" (R)
12:30 • 2:30 • 4:30
8:30 • 8:45 & 10:45 PM
Show Starts at 7:00 PM

KAM DRIVE-IN
800-224-2244
In 70mm/Stereo
"PINK FLOYD THE WALL" (R)
12:30 • 2:30 • 4:30
8:30 • 8:45 & 10:45 PM

PEARLBRIDGE
800-224-2244
In 70mm/Stereo
"CONCRETE JUNGLE" (R)
12:30 • 2:30 • 4:30
8:30 • 8:45 & 10:45 PM
Show Starts at 7:00 PM

KAM DRIVE-IN
800-224-2244
In 70mm/Stereo
"PINK FLOYD THE WALL" (R)
12:30 • 2:30 • 4:30
8:30 • 8:45 & 10:45 PM

PEARLBRIDGE
800-224-2244
In 70mm/Stereo
"CONCRETE JUNGLE" (R)
12:30 • 2:30 • 4:30
8:30 • 8:45 & 10:45 PM
Show Starts at 7:00 PM

KAM DRIVE-IN
800-224-2244
In 70mm/Stereo
"PINK FLOYD THE WALL" (R)
12:30 • 2:30 • 4:30
8:30 • 8:45 & 10:45 PM

PEARLBRIDGE
800-224-2244
In 70mm/Stereo
"CONCRETE JUNGLE" (R)
12:30 • 2:30 • 4:30
8:30 • 8:45 & 10:45 PM
Show Starts at 7:00 PM

KAM DRIVE-IN
800-224-2244
In 70mm/Stereo
"PINK FLOYD THE WALL" (R)
12:30 • 2:30 • 4:30
8:30 • 8:45 & 10:45 PM

PEARLBRIDGE
800-224-2244
In 70mm/Stereo
"CONCRETE JUNGLE" (R)
12:30 • 2:30 • 4:30
8:30 • 8:45 & 10:45 PM
Show Starts at 7:00 PM

KAM DRIVE-IN
800-224-2244
In 70mm/Stereo
"PINK FLOYD THE WALL" (R)
12:30 • 2:30 • 4:30
8:30 • 8:45 & 10:45 PM

PEARLBRIDGE
800-224-2244
In 70mm/Stereo
"CONCRETE JUNGLE" (R)
12:30 • 2:30 • 4:30
8:30 • 8:45 & 10:45 PM
Show Starts at 7:00 PM

KAM DRIVE-IN
800-224-2244
In 70mm/Stereo
"PINK FLOYD THE WALL" (R)
12:30 • 2:30 • 4:30
8:30 • 8:45 & 10:45 PM

PEARLBRIDGE
800-224-2244
In 70mm/Stereo
"CONCRETE JUNGLE" (R)
12:30 • 2:30 • 4:30

Relays

Marines stop Sub-Six domination with 2nd and 3rd place finishes

Sub-Six International, a group of civilian runners who pride themselves in running a sub six-minute mile, would have dominated the Arizona Memorial Relays Sunday if it weren't for the Marines.



OH, WHAT A FEELING — Sheryl Raferty crosses the finish line completing the last leg of the 26.2-mile Arizona Memorial Relays. Raferty and Sergeant Farley Simon, Corporals Joe Flannery, Bruce Hall and Carmie Wood, were the first mixed team to finish and placed third overall. (Photo by Sgt Pepper Davis)

Two Marine teams, finishing second and third overall, prevented Sub-Six from placing one, two and three in the annual race.

The Camp Smith Harriers borrowed Sergeant Farley Simon and Corporal Joe Flannery from the Marine Gold Mixed Team and trailed six minutes behind Sub-Six's platinum team who won the event in 2:29:00.

Cpl Bruce Hall, Carmie Wood, Sheryl Raferty, Simon and Flannery, the Marine Gold Mixed Team, finished in third place, but won their division.

Sub-Six's gold and silver teams finished the 26.2-mile race fourth and fifth, respectively, out of a field of 270 teams.

The masters category was won by the Honolulu Advertiser Election Return in 2:41:42.

The Waianae Coaster Wahines took the women's division in 3:20:37.

The Harriers, Lieutenant Colonel Nick Hoskot, Major Bancroft McKittrick and Gunnery Sergeant Charles Ayers, used Simon and Flannery to run on their team after the Marines ran the first and second legs with the mixed team.

At the conclusion of the race, Simon said that if they didn't run with the mixed team first the men's team would have won.

Instead, Simon and Flannery both shared a second place in the men's division and a first place in the mixed.



TURNING ON THE STEAM — Sergeant Buzz Stewart, quarterback for Marine Air Base Squadron-24, avoids one tackler as he turns the corner to gain more yards. MAHS-24 suffered their first loss of the season Thursday to Headquarters Base Squadron-24, avoids one tackler as Company, 1st Marine Brigade 6-0. (Photo by Sgt Greg Berry)

NATIONAL DIVISION		
Team	W	L
Supply Co, BSSG	4	1
MAHS-2	4	2
SOMS	4	2
Maint Co, BSSG	3	2
CommSptCo	1	3
Amtracs	1	3
HMH-463	0	4
AMERICAN DIVISION		
Team	W	L
MAHS-24	4	1
1st Radio Bn	4	1
HqCo, 1/12	4	2
HqCo, Bde	3	3
H&MS-24	2	4
H&S Co, BSSG	1	4
Btry K, 1/12	0	3

Team suffers first loss

Marine Air Base Squadron-24 suffered its first loss of the season Thursday to Headquarters Base Squadron-24, avoids one tackler as Company, 1st Marine Brigade at Pop Warner Field.

Lance Corporal Ken Higoreda kicked two second half field goals

to lead his team to the 6-0 upset.

The game was a defensive battle with neither team advancing past the other's 10-yard line.

Last year, MAHS-24 was the only team to finish the regular season undefeated.

Stay Marine.

You can count on the Corps.

Join our host
Chuck E. Cheese
and the
Pizza Time Players,
for an
evening
of pizza,
games and
musical
entertainment.



PizzaTimeTheatre
family entertainment
centers...
where pizza's
never been so much fun!

98-1258 Kaahumanu St.

PEARL CITY

Times Square-Waimalu
(Next to Times Supermarket) Phone 488-8487

HOURS:
Sun.-Thurs. 10 a.m.-11 p.m.
Fri.-Sat. 10 a.m.-12 p.m.

All Minors MUST
be accompanied
by adult.

Chuck & Cheese's
Pizza Time Theatre

The Microwave Oven That Makes You a Genius!

Panasonic's NE-9930 adds a new dimension to microwave oven cooking...it's convection cooking for excellent baking or browning. Cook by microwave, convection or an automatic combination of both. With the NE-9930, every meal you cook will be a hit and make you a Genius.



DIMENSION 3



Available at your
military exchange.

Panasonic
just slightly ahead of our time

KDEO COUNTRY RADIO

TOP 10 COUNTRY SONGS

SEPTEMBER 15, 1982

LAST WEEK	THIS WEEK	TITLE	ARTIST
1	1	Love Will Turn You Around	Kenny Rogers
5	2	What's Forever For	Michael Murphy
7	3	She Got The Goldmine	Jerry Reed
6	4	Put Your Dreams Away	Mickey Gilley
7	5	Big Ole' Brew	Mel McDaniel
10	6	I Just Came To Dance	Frizzell & West
9	7	This Dream's On Me	Gene Watson
4	8	Dancin' Your Memory Away	Charly McClain
14	9	I Wish You Could Have Turned My Head	Oak ridge Boys
15	10	Hey Baby	Anne Murray

Get on the road again with Tom Dancer on weekday afternoons, 3-7 p.m. on AM94 KDEO Country Radio

IT'S ALL SET...

NO MORE BEING A FOOTBALL WIDOW ON MONDAY NIGHT! FROM NOW ON LET'S PAMPER OURSELVES AT "SHERRY'S HAIR CARE." SHE'S GOING TO STAY OPEN TILL 9 P.M. JUST FOR US! AND WE WILL GET \$2 OFF ON ANY HAIR CARE PURCHASE OF \$10 OR MORE JUST FOR MENTIONING THIS AD.

Call For An Appointment With

Wendy Magoon
at
SHERRY'S HAIR CARE

IT'S ALL NEW...
GET A RELAXING MASSAGE, TOO!
Introducing Eilly
STATE LICENSED THERAPEUTIC MASSEUSE

\$15
by app't.

39C MALUNIU AVE. KAILUA

261-1131

(NEXT TO AARON'S DIVE SHOP)

FOOTBALL FANS...
YOUR TURN
TUESDAY AND
THURSDAY TILL
9 ALSO!



IT'S ABOUT TIME!

SUNWIZARD

IS HERE!!

SUNWIZARD

IS DIFFERENT
AT LAST!

A Solar System Without The Hassle



Works On Cloudy Days

120 Gallons Of Hot Water Available

10 Year Full Factory Guarantee

Cut Electric Bills 50%

Uses Direct & Diffuse & Reflected Sunlight

We do all commercial locations where hot water is used. Call us for commercial process. Ask us about our new cockroach and rodent eliminator.

No Moving Parts

No Panels On Your Roof

No Pumps

No Secondary Storage Tanks Needed

No Electricity Needed

No Maintenance

No Flushing Needed

No Controls

No Special Fluids

No Heat Exchangers

No Rust

No Leaks

No Boiling

Not Attached To Your Home

Completely Self Contained

Horizontal models slightly higher

includes all installation

everything. No hidden charges.

includes all taxes. NO EXTRA

Qualifies for 50% tax credit.

**SPECIAL! HELD OVER BY
POPULAR DEMAND**

\$2995 COMPLETE!!

REG. \$3495

THIS OFFER GOOD FOR
1 WK. ONLY
TILL 9-29-82

SUNWIZARD

OF HAWAII

526-9541

NO MONEY DOWN
100% FINANCING* *OAC

Located in Maui,
Molokai, Lanai,
Kauai, Big Island

Neighbor Island
Call Collect

NEW OFFICE

WAILUA

SHIP CENT

67-208 GOODSDALE

#201, 637-6288

Sunwizard Home Office

470 Nimitz Hwy.

Ph. 528-9541

Women return for rematch

KAILUA-KONA, Hawaii—The race in the women's division of the Oct. 9 Ironman Triathlon World Championship is predicted to be the race to watch, thanks in part to the explosive finish in the February 1982 race between Kathleen McCartney and Julie Moss.

In February, Julie Moss, a 23-year old student from Carlsbad, Calif. took over the lead about halfway through the marathon, but less than a half-mile from the finish line, her legs gave out and she collapsed. Determined, she willed herself to get up and continue the race. With a quarter-mile left to go and the crowds raucously urging her on, the slender redhead fell again. But once again, she found the energy to stand up and totter toward the Kailua-Kona pier finish line.

Forty feet from the finish line, Moss fell a third time. This time, while she struggled to get to her feet, Kathleen McCartney, a 23-year-old student from Newport Beach, Ca., ran past her and became the first place woman finisher. Her time was 11 hours, 9 minutes and 40 seconds.

Moss crawled across the finish line 29 seconds later.

Both Moss and McCartney will be back on Oct. 9, along with nearly 80 other women who will pit themselves against the ultimate test of physical endurance, a 2.4-mile rough water

swim, followed by a 112-mile bicycle race and finishing with a 26.2-mile marathon.

Since last February, both Moss and McCartney have been training daily for their second go-around. McCartney has won two of the U.S. Triathlon Series races (1.2-mile swim, 21.7-mile bike and 9.3-mile run) and is putting in 250-miles of bike work, 1500-yards of swimming and 40-miles of running every week, in addition to competing in various races.

Moss is also following a grueling training schedule and vows to win the women's division title she missed by just 29 seconds in February.

McCartney and Moss will not have the field to themselves. Seven of the top 10 women from February's race are returning, as well as 28-year old champion swimmer and biker Pat Hines from Los Angeles.

Hines was one of the first two women out of the water in the February race and was the first woman to finish the bike race by a wide margin. Due to a hairline fracture in her ankle, she was forced to drop out of the Ironman Triathlon after 15 miles into the marathon. "After coming so close to winning, and having to drop out is something that I think about every minute," said Hines, who works as an advertising and promotional director at a Los Angeles radio station. "Eat, sleep

and think Ironman day and night."

Hines recently beat McCartney in the California state championship 25-mile bike time trials in a time of 1:02, with the added handicap of having broken her collar bone in a bike accident.

Several women entering the Ironman for the first time have very impressive track records in smaller, regional triathlons. Sue Gladney, 25, of Manitou Springs, Colo., was the first woman in the Estes Park Triathlon (2-mile swim, 50-mile bike, and 27-mile run) and the first woman in the Pikes Peak Marathon. Kathie Rivers, 28, of Eugene, Ore., was the first woman in the Tri-Elephanton in Ketchum, Idaho, a 1.5-mile swim, 35-mile bike and a 12-mile run. Kathy Souverow, 29, from Amarillo, Texas, was the winner of the women's division in the Liberty National Triathlon.

The 80-plus women entered this October range in ages from 19-year old Shawn Wilson from Sacramento, Calif., who placed 10th in the Women's Division in February, with a time of 12:25:34, to 59-year old Helen Klein from Hopkinsville, Ky., who holds the U.S. age record for the 50-mile ultra-marathon, 9:27:58.

Slowpitch Softball

The final round standings of the Recreational Slowpitch Softball league are:

ISLAND DIVISION				PACIFIC DIVISION			
Team	W	L		Team	W	L	
*MAC-2	10	6		*SOMS	15	2	
*Bry A. 1/12	10	7		*H&HS	15	3	
*Amtracs	10	8		*1st Radio Bn	13	5	
All Navy	8	10		*1/3	10	7	
CommSptCo	4	6		*HqCo, Bde	9	9	
Fire Dept.	5	11		SOMS ACM	7	10	
Special Service	0	17		HMM-265	4	13	

*clinched a playoff berth

The playoffs will start Thursday.

Allen Spruance
TLA APPROVED
PepperTree
APARTMENT HOTEL
We're nicer here... 98-150 Lipua Place

- 2 & 1 Bedrooms
- Children Welcome
- TV, Pool, Laundromat
- Maid's Service, Free Phone
- Close to most buses with transportation available

PEARL RIDGE SHOPPING CENTER
488-1993

1981 TOP SALESPERSON OF THE YEAR, OAHU
1980 MOST EFFECTIVE LISTOR, OAHU
1980 SALESPERSON OF THE YEAR, OAHU

Now is the Time!
As a buyer or investor, you are in a great position today. You have many houses from which to choose. You'll find a wide choice of terms available with most sellers. If you're in a position to buy properly... **ACT NOW!**

CALL
NOE PEREA 621-9334
REALTOR, G.R.I. 488-1991
MIKE MCGORMACK, REALTORS 623-6161

Maui Marriott's Great Hawaiian Room Sale!

\$45⁰⁰ SINGLE OR DOUBLE OCCUPANCY AT HAWAII'S NEWEST RESORT.

It's a Marriott made in heaven. And now a limited number of rooms are available to active duty and retired military* at a very down to earth price!

The Great Hawaiian Room Sale is good for single or double occupancy, with a \$15 charge for each additional adult per room (maximum of four to a room).

This special package also includes:

- 50% discount on all hotel recreation, including tennis
- 10% discount in all participating hotel shops
- Children under 18 stay free with parents

Enjoy everything that makes Kaanapali Hawaii's favorite resort



destination while you save money at Hawaii's newest resort. Sail, swim, sun and snorkel along three golden miles of Kaanapali Beach. Take in an early jog or moonlit stroll. Enjoy distinctive, affordable dining and island entertainment. It's all yours for only \$45 per room per night, plus tax, for a limited time during Marriott's Great Hawaiian Room Sale!

For reservations, see your travel agent, favorite airline, or call Maui Marriott toll free from anywhere in Hawaii: 1-800-542-6821.

Marriott does it right in Paradise.
*Must show valid military or equivalent identification for proof of eligibility.



Maui Marriott
RESORT

WHEREVER YOU'RE GOING,

WORLD

THE MILITARY COMES FIRST WITH WORLD.

AIRWAYS

I've always felt a special kinship toward military people. So you can be sure you get a real break on my airline. Special consideration. VIP treatment. And the very best deal on air fare. For you and your dependents.

So check our schedules and air fares with SATO, your military office, or call World, 800-227-1527 or (California only) 800-772-3569.

SATO
SATO, J. DAILY
President and
Chairman of the Board
SATO AIRWAYS, INC.

WORLD AIRWAYS

Why Pay More!!
\$42⁰⁰ PER DAY

MILITARY ROOM & WHEELS

Special Military Rate (Room Only) \$27 DBL. OCC.

HOTEL FEATURES:

- All rooms are air conditioned.
- Swimming Pool
- Kitchenettes
- Laundry Room
- 24-Hour Courtesy Car Service to and from Honolulu Int'l Airport.
- T.L.A. Approved.
- Waikiki Beach just 20-minutes away from Pearl Harbor just 10-minute from hotel.

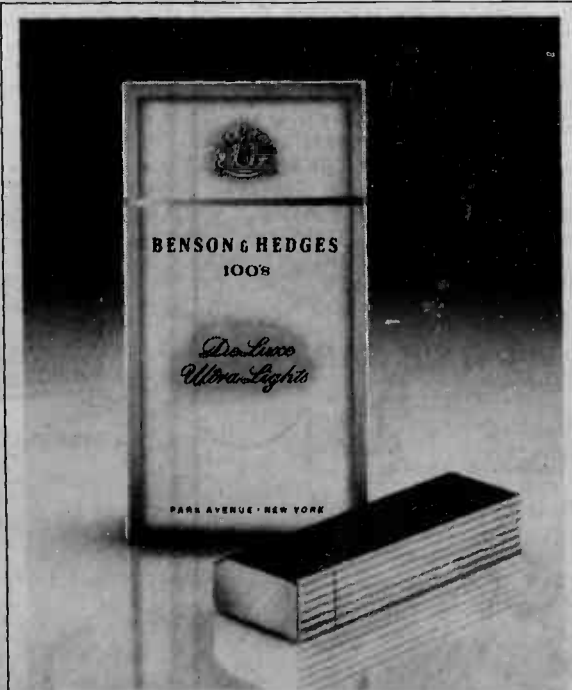
RENT-A-CAR PRICED RIGHT FOR YOU

PACIFIC Marina INN
AT THE AIRPORT
836-1131

2628 Waiwai Loop
Honolulu, Hawaii 96819

BENSON & HEDGES

*Introducing
Deluxe Ultra Lights*



Only 6 mg yet rich enough to be called deluxe.
Regular and Menthol.
Open a box today.

Warning: The Surgeon General Has Determined That Cigarette Smoking Is Dangerous to Your Health.

6 mg "tar," 0.6 mg nicotine av. per cigarette, by FTC method.

Triathlete's pride keeps him running

Life affords no higher pleasure than that of surmounting difficulties, passing from one step of success to another, forming new wishes and seeing them gratified.

—Samuel Johnson

by Cpl Charlie Marshall

"Why I run triathlons?" repeated Staff Sergeant Michael Camm, veteran of two tri-event races. "The personal achievement... the pride in saying, I finished the Ironman."

Camm, a 26-year-old reservist assigned to the 4th Force Reconnaissance Battalion, cut almost 30 minutes off his 1981 time when he completed February's triathlon in 12:59. In October, he hopes to complete the 140-mile course in just over 12 hours.

"Experience is the key in running a

triathlon," continued the Marine. "You have to know how to run the race, how to pace yourself, the in-and-outs of biking and how to take advantage of the terrain."

"Doing all three of the events is easy if you're in shape," added the 5-foot-11-inch 160-pounder, "but it takes endurance to run them back-to-back."

Statistics compiled from previous Ironman Triathlons show athletes train an average of four to six months for the event and devote between 30-40 hours a week. However, being a fulltime student at Kapiolani Community College, holding down a part-time job and the duties of being a "weekend warrior" do not allow Camm to put in the desired hours of training.

"I have a busy schedule, so I do all my training early in the morning," Camm finds cycling at 2 a.m. an advantage

because "there are no cars or traffic." After putting in three to four hours he returns home to prepare for the day's classes.

"Not that I have a running partner, I run at night three times a week. It's a lot better to train with someone because I hate to run and he keeps me motivated." During the actual race, Camm relies on his friends for motivation. "When you're running the marathon you're really tired and want to quit. But, when you hear a friend cheering for you, it's a big confidence builder and you say to yourself, 'I've got to finish.'"

So far Camm has completed two triathlons and hopes to make October's event his third. "You have to want to do it. You make a commitment and you have to follow through. The race itself is fun, but the best part is saying you have done it."

Second Volksmarch scheduled for Sunday

HICKAM AIR FORCE BASE, Hawaii — Global II, an Air Force-wide Volksmarching event held this year in conjunction with the Air Force's 35th anniversary celebration here, is scheduled from 7 a.m. to 5 p.m. Sunday at Hickam Harbor.

According to Capt. Jack Nemceff, local Air Force Volksmarch coordinator, the start and finish point for the six-mile (10 kilometer) Volksmarch will be Foster Point. Participants must start the event between 7 a.m. and 1 p.m.

The Air Force Morale, Welfare and Recreation Division-sponsored event, is sanctioned by the International Federation of Popular Sports and the American Volkssport Association. Lewis Foster, director of Outdoor Recreation, and Senior Master Sergeant J.R. Martinez of Recreation Services are co-chairmen of this noncompetitive event.

The 50th State Wanderers volksmarching club members will assist the chairmen. "They're the only volksmarching club in Hawaii at this time," observes Nemceff. "We're hoping to generate enough interest to spark more volksmarching clubs and events. Some of the other states have as many as 25 clubs."

The Volksmarch is basically a free event. The only participants who have to pay the \$4 preregistration fee are those wishing to receive the commemorative medal and stamp. An additional dollar will be charged to those registering for the medal and stamp of the day of the event. There is no discount family plan.

Experienced marchers generally chose to preregister to receive a specially designed commemorative award, which include the IVV stamp at no extra charge, Nemceff pointed out. "Preregistration generally assures receipt of

the award immediately after the event rather than waiting for it to be mailed."

Last year 106 bases with more than 24,000 people from around the world got involved with the fun and physical fitness of the first volksmarching events.

"The Hawaii Medical Services Association encourages the Walk Hawaii '82 program as a way for non-runners to improve their fitness," said the captain. "Walk Hawaii '82 is a monthly nonprofit program that promotes walking as a great exercise."

Sportsnotes

Try outs for the Hawaii Marine Varsity Basketball Team are conducted Tuesdays and Thursdays at 6:30 p.m. at Hangar 103 Gym.

The Women's Varsity Basketball Team try-outs will start Oct. 4 and will be held Mondays and Wednesdays starting at 6 p.m. in Hangar 103 Gym.

Supervised tryouts for the Hawaii Marine Wrestling Team are being conducted Mondays through Thursdays at 5:30 p.m. at Hangar 103 Gym. A team will be formed to compete in the upcoming Amateur Athletic Union season. For more information contact 1st Lieutenant Thomas Brandt at 257-2717 or 257-3107.

Upcoming running events:

2nd Volksmarch 10K
Dash for the Dolphins
Val Nolasco Half Marathon
Marine Corps Marathon, Va.
Honolulu Marathon

Entry forms for these and other races are available in the Athletic Office.

Sunday
Oct. 17
Oct. 17
Nov. 7
Dec. 12

The Hawaii Armed Service Athletic Council Volleyball competition will start Sunday with games being played at Fort Shafter Gym. Wednesday night games will be held at Whitmore Gym in Wahiawa. For more information contact Gunnery Sergeant Ed Arita at 257-3439.

The Recreational Slowpitch Softball play-offs will start Thursday.

The National Military Rodeo Finals will be held Nov. 12 through 14 in Yuma, Ariz. Applications are available in the Athletic Office.

The MCAS Ladies' Tennis will have a welcome luncheon Friday at 11 a.m. at the 19th Puka. The event will present an opportunity for the returnees to meet and welcome new members and the tennis pro. All women, civilian and service-related, are asked to bring a salad. For more information, contact Mary Anna Sammet at 254-2827 or Anita Wilson at 254-5300.

FINAL WEEK

SAVE 40-50%

ON BEAUTIFUL 14K HAWAIIAN JEWELRY

FINAL WEEK

Barrel Bracelets

5mm Reg. \$650	Sale \$390
6mm Reg. \$675	Sale \$405
8mm Reg. \$900	Sale \$465
10mm Reg. \$1050	Sale \$575

PRICES INCLUDE UP TO SIZE 7 1/2. BRACELETS 10 LETTERS RINGS-7 LETTERS

Barrel Rings

4mm Reg. \$196	Sale \$98
5mm Reg. \$210	Sale \$105
6mm Reg. \$270	Sale \$135
8mm Reg. \$330	Sale \$165
10mm Reg. \$378	Sale \$189

INITIAL PENDANTS

\$39

FREE DELUXE SCROLLING

Horizontal Pendants with chain

6mm Flat Reg. \$250	Sale \$135
6mm Barrel Reg. \$260	Sale \$139
8mm Barrel Reg. \$290	Sale \$155

EXTRA HEAVY WEIGHT

Bar Pendants All 1 1/2" long

6mm Barrel Reg. \$225	Sale \$120
8mm Flat Reg. \$175	Sale \$105
10mm Barrel Reg. \$300	Sale \$159

20mm tapered sculptured ring with .24 ct. tw. diamonds \$550

3 WEEK DELIVERY

Prices expire 9/28/82

SHOP NOW FOR CHRISTMAS 90 day no interest layaway

Golden Dimensions

WAIMALU PLAZA SHOPPING CENTER
98-1277 KAAHUMANU ST.
487-1536

MON-SAT 9:30-6:00
SUN 11:00-4:00

If your eyes need to be open soothe them with STERILE ISOTONIC BUFFER

Lavoptik EYE WASH

AT PAY 'N SAVE

Travel Career?

TRAVEL AGENT
RESERVATIONIST
COMPUTER TRAINING

NEW CLASSES BEGIN
NOV. 1 KAILUA
OCT. 1 PAN AM BLDG.

955-0030 262-8121
262-7749 evs./wkends.

KOTTNER
TRAVEL INSTITUTE

Antilles Red Carpet Travel

GRAND OPENING SPECIAL

25% OFF EVERYTHING

To Celebrate Our New Location

Eurasian Antiques

307 Kamani Street 533-7274, 533-7666

9,000 Sq. Ft., an Antique Shopping Center — American and European Antique Furniture and Collector's Items — Hawaii's Largest Antique Store.

Free Verbal Appraisals done on anything you bring in!!! Also "THE INDICH COLLECTION" Hawaii's largest selection of Oriental Rugs will have all "DHURRIE" Carpets at 25% Off and "JADE EAST" our Oriental Antique Jade and Porcelain Dept. all at 25% Off. EURASIAN ANTIQUES has it all!!!

LOCATED 1 BLOCK EWA OF WARD AVE. NEAR WARD WAREHOUSE

Oak Desks - Tables - Chairs - French Louis XV Furniture - Sterling Silver - Paintings - Antique Nautical Items - Art Nouveau - Fountains - Dining Room Suites - Statuary - Garden Benches - Stained Glass - Lamps - Jewelry - Cut Glass - Phonographs - Music Boxes - Old Toys - Flint Lock Pistols - Canes - Gold Leafed Furniture - Beer Steins - Hawaiiana - Carpets

Valuable Coupon — Clip & Save

CARPETS STEAM CLEANED

We Recommend Scotchguard Carpet Protector!

Commercial Rates Available!

Our Work Includes:

- Workmanship Guaranteed
- One Day Service Avail.
- Color Brighteners
- Quick Drying
- Pet Deodorizers
- Controls Fleas
- Licensed and Insured
- Ask for References

WHY DO MORE CUSTOMERS SELECT HAWAII CARPET CLINIC

- Certified Firm & Operators Providing Professional Service Since 1976
- We Pre-Vacuum
- Move Furniture
- Expert Spotting
- Brushed or Raked
- Hand Edging

ANY SIZE ROOM Normally \$34.95

\$9.95 PER ROOM

HAWAII CARPET CLINIC

922-2222

SERVICES AVAILABLE: Pre-Conditioning, Flood, Mud, and Water Damage Control

NOW ONLY 3 ROOMS OR MORE

EXPIRES OCT. 13, 1982

BULLETIN:

Every Goodyear tire in stock, is on sale for two days only.

For domestic & import cars & light trucks.

If you really want a great deal and a great tire, starting tomorrow and for 2 days, every Goodyear tire in our store will go on sale. Arriva All-Season Radials, Tiempo, Custom Polysteel, White Letter Hi Performance Eagle Radials, Light Truck Tires and more.

But hurry. The sale ends Saturday at 6:00* P.M.

*NOTE: Some Stores and Dealers Have Different Hours. Please Check Listing Below for Exact Hours.

Two Day Sale Friday, Saturday Only.

GOODYEAR

AUTO SERVICE CENTERS

Kaneohe Bay

Shopping Center
48-047 Kam Hwy., Kaneohe
HI. 96744 247-6868
Mgr. Philip G. Smith

STORE HOURS:
SAT. 7:30 A.M. to 5 P.M.
MON. THRU FRI. 7:30 A.M. to 6:00 P.M.

Waimalu Plaza

Shopping Center
98-1277 Kaahumanu St.
Aiea, HI. 96701 487-0066
Mgr. Wayne Nagai

Salutes

EDITOR'S NOTE: Salutes is designed to recognize individuals for their achievements and exceptional performance of duty as well as welcome new arrivals to Hawaii.

The information is compiled from Fleet Home Town News releases submitted to the Joint Public Affairs Office by unit information officers.

HqCo, 1st-MarBde

Welcome aboard:
Sgt J. A. Nelson
Sgt D. E. Smelser
PFC C. A. Higgins
PFC M. L. McKay
Pvt D. R. Dolph
Pvt I. J. Cornelius Jr.
Pvt R. O. Howard Jr.
Pvt S. R. Olsen
Pvt L. A. Schlack
Promotion:
Cpl T. L. Adams

LCpl C. R. Denton
LCpl D. L. Kopec
Meritorious Mast:
Sgt P. N. Garland
Reenlistment:
MSgt R. J. Hofmann

1stRadBn

Welcome aboard:
LCpl M. G. Blyzniuk
LCpl M. T. Henshaw
LCpl D. E. Robinson
PFC W. H. Camara
PFC A. S. Johnson
PFC H. G. Stole

PFC D. R. Sullivan
Promotion:
SSgt R. L. Parker
SSgt R. D. Rice
Cpl B. K. Anderson
Meritorious promotion:
Cpl J. L. Parsons
Cpl J. F. Werth

MACS-2

Promotion:
Cpl J. R. Cooper
Cpl S. Hanley
Cpl R. D. House

LCpl M. C. Perez
Meritorious Mast:
LCpl D. P. Danke
1/12
Welcome aboard:
2ndLt M. J. Healer
2ndLt T. A. Quintero
2ndLt M. S. Toupin
Cpl J. Thomas
LCpl H. R. Felts
LCpl W. J. James Jr.
LCpl K. H. Kusche
LCpl J. M. Paliath
LCpl H. Ross

PFC L. R. Munoz
PFC D. M. Shatas Jr.
PFC J. D. Soriano
Meritorious promotion:
Cpl V. R. Holt
Cpl S. E. Negowsky
Cpl A. A. Roman
Cpl R. A. Theilman
Cpl W. L. Jones
LCpl E. L. Spurgeon
Meritorious Mast:
Cpl A. Owens
LCpl R. K. Farley

Localmotion

K-BAY OFFICER'S CLUB

TODAY — Lunch in the Pacific Room from 11 a.m. to 1 p.m. features special, hot carved sandwiches, soup and salads. Mongolian barbecue served on the lanai from 6 to 8:30 p.m.

THURSDAY — Lunch in the Pacific Room. Beefsteak buffet from 6 to 8:30 p.m. features steamship round, seafood item, rice or potatoes, vegetable and a salad bar.

FRIDAY — Lunch in the Pacific Room. Happy Hour in the Tapa Bar runs from 4:30 to 6:30 p.m. Mongolian barbecue on the Lower Lanai from 6 to 9 p.m. "Lukes Pineapple" plays in the Tapa Bar from 6 p.m. to 12:30 a.m.

SATURDAY — Hotel round of beef and Alaskan king crab buffet in the Pacific from 6 to 8:30 p.m. "Lukes Pineapple" plays in Tapa Bar from 6 p.m. to midnight.

SUNDAY — Champagne brunch in the Pacific Room from 10 a.m. to 1 p.m. features a mini buffet, menu orders, and all the juice and champagne you desire. In the evening prime rib and peel your own shrimp buffet from 6 to 8:30 p.m.

MONDAY — Lunch is served in the Pacific Room from 11 a.m. to 1 p.m. Join us Monday through Friday for lunch specials, hot carved sandwiches, soup and salads. Monday evening the club is closed.

TUESDAY — Lunch is served in the Pacific Room from 11 to 1 p.m. The Tapa Bar opens from 4 to 10 p.m. Happy Hour from 4:30 to 6:30 p.m. Tuesday evening the dining room is closed.

SNCO CLUB

TODAY — Lunch from 11 a.m. to 1 p.m. Family Night Buffet served from 5:30 to 8:30 p.m. "Oldies Nite with TC & Co." plays from 8 p.m. to 1 a.m.

THURSDAY — Lunch is served from 11 a.m. to 1 p.m. Mongolian barbecue served from 5:30 to 8:30 p.m. "Soul Night" plays from 8 to 11 p.m.

FRIDAY — Lunch is served from 11 a.m. to 1 p.m. Candlelight dining featuring peel and eat shrimp served from 6 to 9 p.m. Request Line with TC & Co. features \$1,000 Dance Contest.

SATURDAY — Prime rib and crab served from 6 to 9 p.m. "Free Style" plays from 9 p.m. to 1 a.m.

SUNDAY — Buffet brunch is served from 10 a.m. to 1 p.m. Mongolian barbecue from 5:30 to 8:30 p.m.

MONDAY — Lunch is served from 11 a.m. to 1 p.m. Happy Hour is from 5 to 6 p.m.

TUESDAY — Lunch is served from 11 a.m. to 1 p.m. Happy Hour is from 5 to 6 p.m. Early bird buffet from 5 to 7:30 p.m. Request Line with Rocky Rhodes is featured from 8 to 11 p.m.

WINDWARD ENLISTED CLUB

TODAY — Lunch is served from 11 a.m. to 1 p.m. Dining room opens from 5 to 9 p.m. Every Wednesday the chef's special includes salad bar. Every Wednesday night D.J. plays rock and roll in the Moongate Lounge from 7:30 to 11:30 p.m.

THURSDAY — Lunch is served from 11 a.m. to 1 p.m. Dining room opens from 5 to 9 p.m. with all the beef ribs you can eat. Every Thursday night is country and western night. This month features

"Country X Express" from 7:30 to 11:30 p.m.

FRIDAY — Lunch is served from 11 a.m. to 1 p.m. Dining room opens from 5 to 9 p.m. "Unexpected" plays from 8:30 p.m. to 12:30 a.m.

SATURDAY — Dining room opens from 5 to 9 p.m. "Culinary Jam" plays from 8:30 p.m. to 12:30 a.m.

SUNDAY — Club opens at 11 a.m. Breezy Inn opens at 2 p.m. until 8 p.m. In the Moongate Lounge guest D.J. from New York spins discs from 7:30 to 11:30 p.m.

MONDAY — Lunch from 11 a.m. to 1 p.m. Dining room opens from 5 to 9 p.m. with "Italiano Night", all the spaghetti you can eat. Happy Hour is from 5:30 to 7:30 p.m. with free popcorn.

TUESDAY — Lunch from 11 a.m. to 1 p.m. Dining room opens from 5 to 9 p.m. with all you can eat smorgasbord every Tuesday night. In the Moongate Lounge D.J. plays rock and roll from 7:30 to 11:30 p.m.

UNCONTESTED DIVORCES — \$96 + tax
(fair terms to which both parties agree)
(no children of the marriage & no real property interest)
ADDITIONAL CHARGE FOR CHILDREN \$28 + tax
ADDITIONAL CHARGE FOR REAL PROPERTY \$48 + tax

DIVORCE CONSULTATION — \$48 + tax
UNCONTESTED ADOPTIONS — \$240 + tax

SIMPLE WILLS — \$384 + tax
OTHER FEES UPON REQUEST
BARBARA LEE MELVIN
National Secretary — National Association of Women Lawyers
521-7496
evenings and weekends by appointment

Cinema

MCAS Theater
Camp Smith Theater

1. **VIRUS** — Glenn Ford, Chuck Connors, PG, drama.
2. **THE FOUR SEASONS** — Alan Alda, Carol Burnett, PG, comedy.
3. **I OUGHT TO BE IN PICTURES** — Walter Matthau, Ann Margaret, PG, comedy drama.
4. **THE FINAL CONFLICT** — Sam Neill, Rossano Brazzi, R, horror drama.
5. **BEDFORD INCIDENT** — Richard Widmark, Sidney Potier, PG, drama.
6. **FROM HELL TO VICTORY** — George Peppard,

George Hamilton, PG, war drama.
7. **PARADISE** — Willie Aames, Phoebe Cates, R, romantic adventure.
8. **SUPERMAN II** — Christopher Reeve, Margot Kidder, PG, adventure.
9. **THE AWAKENING** — Charlton Heston, Susannah York, R, horror drama.
10. **BATTLE HYMN** — Rock Hudson, Anna Kashfi, PG, biographical drama.
11. **PLAY DEAD** — Yvonne De Carlo, Stephanie Dunham, R, thriller.
12. **VICTOR/VICTORIA** — Julie Andrews, James Garner, PG, comedy.

KIRK

OFFICIAL HAWAIIAN MUSIC REPORT SEPT. 16, 1982

LAST WEEK	THIS WEEK	TITLE	ARTIST
1	1	Hard To Say I'm Sorry	Chicago
2	2	Even The Nights Are Better	Air Supply
3	3	What Was In That Kiss	Scott Baio
4	4	Eye Of The Tiger	Survivor
5	5	Do You Wanna Touch Me	Joan Jett
6	6	Nice Girls	Eye To Eye
7	7	Planet Rock	Soulsonic Force
8	8	Under The Boardwalk	Tom Tom Club
9	9	I'll Love You Through It All	The Society of Seven
10	10	Who Can It Be Now	Men At Work

The Official Hawaii Music Report is determined by weekly ballots you fill in, local record sales, caller requests and KIRK research.

BEDROOM EYES
NEW! Two Week Sleep-In Lens!
Wear up to 2 weeks without removing.
Special Introductory Price
\$199 Permalens by Coopervision
Reg. \$265
Inquire also about standard soft lenses \$99
Includes lenses, care kit, solution & case. All follow up visits with the Doctor. All required visits. Same day service in most cases.
MUST BRING THIS AD IN FOR THE SPECIAL!!!
DR. TIM TOGIKAWA PEARL CITY
Optometrist
1146 Union Mall
538-6226
Dr. Edwin Endo
98-1238 Kauhuanu St.
Suite 301
487-7907

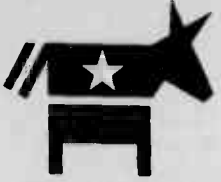
TLA SPECIAL \$3500 + TAX
per night for a family of four when occupying the same room
FREE IN-ROOM MOVIE
ECONOMICAL and extensive Children's menu
PAYMENT — arranged to suit your requirements. One night's deposit, then charge room and meals till your Temporary Living Allowance comes in CONVENIENTLY — located in all Military Areas on Oahu
COMPLIMENTARY — welcome cocktail drink
additional features
Whaler's Post Restaurant
entertainment
Red Whaler's Lounge
Air conditioned Rooms
Guest Synchronization
Non-Smoking Pool
Cable TV
Room Service
Call Nippon Family Hotel
RAMADA INN
An IHG WORLDWIDE HOTEL
2241 N. Nimitz View, Honolulu, HI 96813 Phone (808) 836-1636

RENT TV'S RENT WASHERS RENT STEREOS RENT REFRIGERATORS RENT APPLIANCES
2nd Week FREE on TV's only
CALL COLORTYME ABOUT OUR 5-STAR RENTAL PLAN
Name Brands like: GE, Gibson, RCA, Hotpoint, Fisher, Sansui, Whirlpool
ALL RATES E-1 AND ABOVE WELCOME
★ NO CREDITORS CHECKED
★ NO LONG TERM OBLIGATION
★ DELIVERY AND SERVICE INCLUDED
★ RENT-TO-OWN PLAN
★ E-1 AND ABOVE WELCOME
AMERICA'S LARGEST RENT TO OWN SYSTEM
TYME
TV • Video • Audio • Appliances
INDEPENDENTLY OWNED AND OPERATED
COLORTYME
10-7 Mon.-Sat.
487-6421
RENT TV'S RENT WASHERS RENT STEREOS RENT REFRIGERATORS RENT APPLIA.

FREE OFF-SEASON DISCOUNTS
WITH A COMPACT CAR, GET A DELUXE ROOM FREE.
STAND-BY OR REGULAR AIR FARES OK TO BOOK
a room, a car and free gas for two. \$33. FROM
Kauai Maui Hilo Kona
KAUAI SANDS \$39 per night including standard room for two, \$4.00 free gas per day per car and a U-Drive car with no mileage charge.
MAUI HUKILAU \$35 per night including standard room for two, \$4.00 free gas per day per car and a U-Drive car with no mileage charge.
MAUI SEASIDE \$39
HILO HUKILAU \$33 per night including standard room for two, \$4.00 free gas per day per car and a U-Drive car with no mileage charge.
KONA HUKILAU \$35 per night including standard room for two, \$4.00 free gas per day per car and a U-Drive car with no mileage charge.
KONA SEASIDE \$39
ROOMS ONLY from \$20 single; \$22 double
See your travel agent or call — Groups Qualify
ALOHA AIRLINES HUKILAU HOTELS
836-1111 922-1228

Vote for the Winner!
Classified Want Ads
We'll help you save money AND make money...
Call 235-5881 or 622-3966.
• 13 AIRCRAFT
1971 CESSNA 150 owner financing available. Call 235-3790 after 5 p.m.
• 15 ANNOUNCEMENTS
PENNY STOCKS
Offers great investments and opportunity. For free brochures call 523-0833.
Ask for G. Kobayashi, Chasley & Dunn, Inc.
• 20 LOST & FOUND
LOST: 16" Hobie Cat sailboat, orange sail bag, 9-12 on route to Kailua from Kaneohe. Call 235-2599.
LOST: Akita puppy, Kailua beach area, \$100 REWARD. Ph. 261-4123.
• 25 PERSONALS
SEEKING responsible mature loving person(s) to care for well-behaved, healthy, older dog for up to a month. "Sage" is a special friend. Will pay you. Please write c/o Clea, P.O. Box 1372, Kailua, 96734. ATTRACTIVE couple seek young military friends. Bob 823-9642.
• 25 PERSONALS
IF you want to drink, that's your business. If you want to stop, that's ours. Alcoholics Anonymous. Ph. 948-1438.
• 35 PROFESSIONAL SERVICES
CARPENTRY, Home repairs. Call Nick 261-7176.
FACIALS by a Massage Therapist. Look your best. Feel your best. E. Revelly 259-8581.
SKILLFULLY applied massage is one of the most effective means of treating stress, backache, headache, muscle soreness. Work comp. & auto accident welcome. Helena 941-0372.
PREGNANT AND WORRIED? WE'LL HELP.
FREE P.G. TEST
MON.-WED. 8:00-3:00
487-7087, 538-3577
262-2171, 622-1532

LEGAL NOTICE
NOTICE
PROPOSED CHARTER AMENDMENT CITY AND COUNTY OF HONOLULU FOR THE 1982 GENERAL ELECTION
In accordance with the petition submitted by the INITIATIVE COMMITTEE pursuant to Section 15-101(b) of the Revised City Charter, the following question will be submitted to the people of the City and County of Honolulu to be voted upon at the next General Election on Tuesday, November 2, 1982:
"SHALL THE REVISED CITY CHARTER BE AMENDED TO ALLOW FOR ADOPTION OF ORDINANCE (CITY LAW) BY INITIATIVE?"
YES _____
NO _____
The text of the proposed Charter amendment is reproduced as follows:
PETITION FOR PROPOSAL TO AMEND ARTICLE III OF THE REVISED CHARTER OF THE CITY AND COUNTY OF HONOLULU 1973 (RCH), AS AMENDED, BY ADDING A NEW CHAPTER RELATING TO ORDINANCES BY INITIATIVE POWER.
Pursuant to Article XV RCH (1979 Supp.), the petitioners submit the following amendment to the RCH to the electors of the City and County of Honolulu [City] for consideration at the 1982 General Election, subject, however, to the conditions as imposed by the applicable provisions contained in Article XV RCH (1979 Supp.):
SECTION 1. Article III RCH is hereby further amended by adding thereto a new chapter to read as follows:
Chapter 4
ORDINANCES BY INITIATIVE POWER
Section 3-401. Declaration—
a. Power. The power of electors to propose and adopt ordinances shall be the initiative power.
b. Limitations. The initiative power shall not extend to any ordinance authorizing or repealing the levy of taxes, the appropriation of money, the issuance of bonds, the salaries of county employees or officers, or any matter governed by collective bargaining contracts.
Section 3-402. Procedure for Enactment and Adoption—
a. Petition. An Ordinance may be proposed by petition, signed by qualified electors equal in number to at least ten percent of the entire vote cast for mayor in the last preceding mayoralty election.
b. Form of Petition. Each elector signing such petition shall add to his signature, his printed name, his residence and the date of signing.
c. Affidavit on Petition. Signatures may be on separate sheets, but each sheet shall have appended to it the affidavit of some person, not necessarily a signer of the petition, that, to the best of the affiant's knowledge and belief, the persons whose signatures appear on the sheet are qualified electors of the city, that they signed with the full knowledge of the contents of the petition and that their residences are correctly given.
d. Proposed Ordinance. Such petition shall set forth the proposed ordinance, or a draft of the proposed ordinance may be attached and made part of such petition.
Section 3-403. Filing and Examination of Signatures on Petition—
a. Duty of Clerk. Upon filing of such petition with the council, the clerk shall examine it to see whether it contains a sufficient number of apparently genuine signatures of qualified electors. The clerk may question the genuineness of any signature or signatures appearing on the petition, and if he finds that any such signature or signatures are not genuine, he shall, after his public disclosure of the signatures in question, disregard them in determining whether the petition contains a sufficient number of signatures.
b. Clerk to Reject Petition. When the clerk shall eliminate any sheet of the petition which is not accompanied by the required affidavit, the invalidity of any sheet shall not affect the validity of the petition if a sufficient number of signatures remains after eliminating such invalid sheet. The clerk shall complete his examination of the petition within fifteen days after the date of filing with the council.
c. Review by the Court. A final determination as to the sufficiency or validity of the petition may be subject to court review.
Section 3-404. Submission of Proposal to Electors—
a. For General Elections. Any petition for proposed ordinance which has been filed with the Council at least ninety days prior to a general election and which has been certified by the clerk, shall be submitted to electors for the aforementioned general election.
b. For Scheduled Special Election. If any petition for proposed ordinance is filed at least ninety days before a scheduled special election within the city and which has been certified by the clerk, it shall be submitted to the electors for the aforementioned special election.
c. For Initiative Special Elections. A special election for an ordinance by initiative power shall be called within ninety days of filing of the petition if signed by qualified electors equal to at least fifteen percent of the number of entire vote cast for mayor in the last preceding mayoralty election, and if such petition specifies that a special election be called; provided that if the clerk certifies less than fifteen percent but at least ten percent, the proposed ordinance shall be submitted at the next general election or scheduled special election. No special initiative election shall be held if an election is scheduled within one hundred eighty days of submission of the proposal.
d. Adoption by the Council. If the council introduces and adopts after three separate readings, including a public hearing, the proposed ordinance which was the basis for a petition on or before ten days prior to date of publication of the proposed ordinance as required in this charter, then the proposed ordinance need not be submitted to the electors.
Section 3-405. Adoption, Effective Date and Limitations—
a. Adoption and Effective Date of Ordinance. Any proposed ordinance which is approved by the majority of voters voting thereon shall be adopted, and shall become effective ten days after certification of the results of the election, or at the time and under the conditions specified in the ordinance.
b. No Veto. No ordinance adopted by the initiative power shall be subject to mayoral veto.
c. Limitation Against Council. No ordinance adopted by initiative power shall be amended or repealed by the council within two years after adoption, except as a result of subsequent initiative or by an ordinance adopted by the affirmative vote of at least three quarters of the entire council after public hearing.
Section 3-406. Approval of Alteration—
a. Amendments Made by Corporation Counsel. The petition shall designate and authorize not less than three nor more than five of the signers thereto to approve any alteration in form or language, or any restatement of the text of the proposed ordinance which may be made by the corporation counsel.
b. Restatement of Proposed Ordinance on Ballot. The same designated and authorized signers shall approve any restatement of the proposed ordinance on the ballot.
Section 3-407. Inconsistent Provisions — All rules, ordinances and Revised Charter provisions which are inconsistent with this chapter shall be superseded by the provisions of this chapter from its effective date.
SECTION 2. Petitioners to review any amendments to proposal. The petition shall designate and authorize not less than three nor more than five of the signers thereto to approve any alteration in form or language, or any restatement of the text of the proposed amendment which may be made by the Corporation Counsel.
SECTION 3. Duty of the Clerk. The Clerk, pursuant to the provisions of Section 15-101(b), RCH (1979 Supp.), shall:
1. Examine the petition to see whether it contains a sufficient number of apparently genuine signatures of registered voters;
2. Question the genuineness of any signatures or signatures appearing on the petition, and if he finds that any such signature or signatures are not genuine, he shall disregard them in determining whether the petition contains a sufficient number of signatures;
3. Eliminate any sheet of the petition which is not accompanied by the required affidavit. The invalidity of any sheet shall not affect the validity of the petition if a sufficient number of signatures remain after eliminating such invalid sheet, and
4. Complete his examination of the petition within fifteen days after date of filing with the council.
SECTION 4. Submission to Electorate. The Clerk as prescribed in Section 14-102.2, RCH (1979 Supp.), is hereby requested to:
1. Publish at length the proposed amendments to the RCH in a daily newspaper of general circulation in the City at least forty-five (45) days before its submission to the electors of the City at the 1982 General Election; and
2. Prepare the necessary ballot for presentation of the proposal contained in this petition to the electors at the 1982 General Election.
SECTION 5. Effective Date. Upon approval by a majority of the voters for amendment of the Revised Charter of the City and County of Honolulu as indicated by the total number of votes cast for and against the amendments and upon official certification of such result, the amendments proposed herein shall take effect upon the date of such certification.
Copies of the foregoing Proposed Charter Amendment, in full, are available at the Office of the City Clerk, City Hall, Honolulu, Hawaii 96813.
CITY AND COUNTY OF HONOLULU
Run Print (All Areas):
Wednesday, 9/22/82
WILFRED M. MITA, Esq.
City Clerk



Vote for the Winner!

Classified Want Ads



We'll help you save money AND make money . . . Call 235-5881 or 622-3966.

35 PROFESSIONAL SERVICES

DESIGNER custom-made, all types of garments and alterations. Ph. 262-4949

FURNITURE Refinishing, Antique Restorations, Repairs, Estimates. 261-9705, ans. serv.

PORCELAIN, FIBERGLASS AND MARBLE REPAIRS AND REFINISHING. Permanent, durable restorations. Refinish or repair instead of replacing. Call John 537-4501 or 261-6497

FELIPE Yard and Housecleaning. Call 261-5050 between 2:00 and 8:00 p.m.

PLANTATION RENTALS - YARD MAINTENANCE, landscaping, hauling, plant sales, we do it for less! John & Norman 262-5395

WE SEW large size shirts, XXL, XXXL, XXXXL, XXXXXL Your material. We do the rest. Call 254-3765

CLOWNS for birthdays, Games, prizes, balloons, more. Low prices. Military discount. Call 422-1519

PROFESSIONAL Yard Services, landscaping, monthly maintenance at home care. Low individual rates. Call 239-6287

GIGI ESCORTS & MASSAGE Beautiful Girls Ph. 487-9008, 487-1362

"ISLAND WIDE MASONRY" Patios, sidewalks, driveways, block wall, stone wall, stucco, fire places, very reasonable. FREE estimates 671-4942

DON'S ROOF REPAIRS, most repairs under \$100. Free estimates. Ph. 456-2491.

DIVORCE Serving Oahu, Since 1977 *105 533-4533
Staff Attorney Gene Bridges
A Public Service Project

REALTOR ASSOCIATES Join a fast growing company, with over \$37,000,000 in inventory. Paying highest commissions in Windward area. Ideal location. All inquiries strictly confidential. Call Bill at 262-2302.

NEAL REALTY, INC. 262-2302

35 PROFESSIONAL SERVICES

WINDWARD HANDYMAN SERVICE: No job too small!!! Carpentry, plumbing, repair, rental maintenance. FREE estimates. Call 264-1987.

DRESSMAKING, alterations, sewing, patternmaking. Waipio Gentry, Ph. 877-8858.

HEALING Massage, Reflexology. Relieve neck & back pain & sports injuries. Relaxation. Elizabeth Revely 259-8561.

CONCERNED COUNSELING

Help For Families Troubled With Drugs or Alcohol related problems.

Also GENERAL COUNSELING, FREE CONSULTATION

For Recorder Message. 262-0284

HOME Improvement - Ceramic Tile, counter tops, floor/janals, concrete slabs, hollow tile, fences, remodeling, painting. Free est. Charles 488-3340 BC-7828

WINDWARD Vacuum Cleaner. Repairs, parts & Service. Free Pick-up and delivery. New & reconditioned w/1 yr. warranty. Patricia M. Duran 239-8876.

WILL do sewing & upholstery 15 yrs. experience. Call 422-8302.

YARD Service, paint house & mason work, sidewalk, slab, driveway, landscaping. Free Estimates. Call John 671-1633

HOUSECLEANING, \$150 per house, including yard. Inspection gtd. Ph. 688-5315

SPIRITUAL ADVISOR

Help and Advice on all problems of life. Revelations on your past, present and future. If you have looked for help for your problems, but have found no solution.

*Sister Nancy will help Call for Appointment

487-8905

35 PROFESSIONAL SERVICES

GETTING READY TO ROTATE???? Specializing in cleaning of KMCAS housing. Valid business license, approved by housing office. Call Monday thru Thursday 5-8 p.m. for free estimate.

LOW RATES AND PROFESSIONAL SERVICE

Work is guaranteed. Serving Kailua-Kaneohe areas. Apartments, condos, & carpet cleaning available.

ALOHA CLEANING COMPANY

254-2039

HAULING. Reasonable Rates. Free Est. Ph. 237-8030

SWEET Relief, temporary general office services, filing, typing, light bookkeeping. Hourly rates, no benefits. Call 262-8786

WANT TO TAKE OFF WEIGHT—AND KEEP IT OFF? Try the Nutrilite Weight control plan. Ph. 839-1721 for details.

LAWNKEEPERS Hawaii. The professional Landscaper, gardener, commercial & residential. Landscaping, sprinkler system, tree trimming, plant pest & disease control, Weeding & other phases of maintenance. Call for consultation & estimates, free of course. Ph. 247-2495. Lic. C-08446.

CLEANING Specialists, free estimates. Home, office, bar, military quarters. B & J 696-7685

PIANO Lessons. Beginners. Call Sandy 261-2252

MARGARET LOCKRIDGE, INC. SHOWN BY OWNER REAL ESTATE SERVICE 1 1/2 %

YOU SHOW

Member of Honolulu Board of Realtors. National Association of Realtors

WE TRANSACT

Our fee is 1 1/2% of the selling price. There is no initial charge for activating our service.

YOU SAVE

Are You Interested? Give Us A Call 262-3403 or 262-8307
829A Kailua Road, Suite 109, Kailua (Behind Kailua Hardware)

(Behind Kailua Hardware)

Island Wide Service

SELLERS: Call For A Brochure

BUYERS: Inquire Into Our Numerous Listings

35 PROFESSIONAL SERVICES

HEALTHCARE, help for head/neck/backache, stress, pain, injuries, insomnia, Relax, fry massage therapy, reflexology. Family rates. Barbara Ruitstom (lic.) 262-7254

RETIREE Dependable Yard Service. Call 262-7588

"Busybodies" —LET US DO IT!— Rent A Housewife Cleaning, water plants, feed dogs, tutor, painting, wash windows, shopping, visit elderly, parties, etc., etc. 537-4858, 261-4896

MASON Needs work. If you are in need of any block tile, cement work or home repairs, call Tony for a free estimate. Days 235-1395, evens 235-4141

QUARTERS cleaned, all work guaranteed, reasonable rates. Call 824-3689

SUKI'S CLEANING SERVICE

Specializing in Military houses & yards. Reasonable rates. FREE Estimates. 422-2535/422-6814

CABINETS & Counters failing apart — need shelves or custom work? Free Estimates 395-8336 Creative Woodwork & Design

PIANO & ORGAN LESSONS. Successful method for adults and teenagers. Studio in Kaneohe or downtown. A few slots open for home-lessons. Call John Schouten at 247-6010

WAHIAWA Chinese School - Conversational Mandarin course. Call 621-6387, 621-8251

PIANO Lessons Beginners. Call Sandy 261-2252

for a HOME IMPROVEMENT JOB WELL DONE

START HERE!!

SPRINKLER SUPPLIES

TIRED OF WATERING YOUR LAWN?

40% OFF

regular price

CALL LAWN SYSTEMS, INC.
488-7721 FREE ESTIMATES
AUTOMATIC SPRINKLER SYSTEM

Sale Ends September 30th, 1982

LUMBER

Beautify your home with one of these exotic woods.

Lumber	Plywood
Algonquin	Pine
Angico	Pine
Aspen	Pine
Ash	Pine
Balsa	Pine
Beech	Pine
Birch	Pine
Bubinga	Pine
Cedar	Pine
Cherry	Pine
Damar	Pine
Hickory	Pine
Iroko	Pine
Japong	Pine
Jelutong	Pine
Koa	Pine
Koa	Pine
Mahogany	Pine
Maple	Pine
Oak	Pine
Obeche	Pine
Pau Ferro	Pine
Pine	Pine
Purpleheart	Pine
Rosewood	Pine
Sapele	Pine
Sedua	Pine
Spruce	Pine
Teak	Pine
Vermilion	Pine
Walnut	Pine
Wenge	Pine
Willow	Pine
Zebra Wood	Pine

HARDWOOD LUMBER
2620 Waiwai Ln. PH. 836-3757

ASK AN EXPERT ABOUT WINDWARD ESTATES.

J.M. Urner, Inc., Realtors, has been one of Hawaii's leading general brokerage firms since 1970. Their in-depth experience in meeting the needs of military families has helped many service personnel relocate to island residential communities, townhomes and condominiums. Here's what J.M. Urner says about Windward Estates:

"I've been involved with dozens of quality real estate developments through the years, and I've never seen a better value than Windward Estates. If your family is searching for a spacious new home with very affordable financing, you must see Kaneohe's Windward Estates."

LET RENT-PLUS HELP BUY YOUR NEW TOWNHOME!

Windward Estates' outstanding financing means your monthly payments will be as low as rent. Your rent-plus allocation can actually help you own a two, three or four bedroom townhome in the quiet community of Kaneohe . . . without going overboard!

10% INTEREST

We're going all-out to help military families qualify for a luxurious 1,231 to 1,744 sq.ft. townhome at Windward Estates.

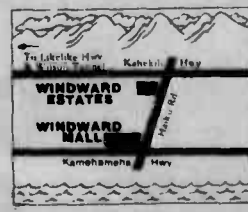
- ★ 10% interest*
- ★ 10% down payment
- ★ 30-year adjustable rate mortgages
- ★ 1980 prices from \$126,500
- ★ Multiple ownerships invited

*Expires 11/15/82. PMI required. 10.06% A.P.R. first year.

TYPICAL EXAMPLE:

2 Bedroom 2 Bath Townhome Estate. 1,231 square feet	
Purchase Price	\$126,500
10% Down Payment	-12,650
First Mortgage	\$113,850
Monthly Principal/Interest @ 10%* for 1st year	\$999.60
Monthly Lease Rent	\$48.00
Estimated real property tax	\$97.00
Estimated Maintenance Fee	\$48.70

Open 11 a.m. to 5 p.m. daily. Leasehold. Phone 235-1125. J.M. URNER, INC., Realtors. Courtesy to brokers.



Check Your SERVICE DIRECTORY For Fast, Quick Results

Attorney

DIVORCE from \$175. Evening appointments available. Kishiy J. Gumpel, Attorney. 235-5680

General Contracting

PATIOS AND NEW ADDITIONS Repair-garage. Free Est. Clifford Iwene C-4477 Ph. 877-4895

Painting

KAMAAINA PAINTING Free Estimates Lic. 04787 Ph. 247-6621

Roofing

STATE ROOFING General Roofing. Free Estimates. Ben Pascal 37 yrs Exp. Lic. C-2036 Ph. 247-2421

Construction

Quality Remodel - Additions Carpentry Masonry Painting. All work guaranteed BC10813 Stavig Const. 262-4417

Handyman

THE Complete Handyman Carpentry, painting, home repairs. Ph. 235-5357

Federal Painting Co.

See the Yellow Pages. Call 396-0784

Weight Loss

LOSE weight now. 100% satisfaction guaranteed. Herbalife Call 671-9454.

Dirt

SCREENED or Fill for sale Ph. 238-6069 even. 239-9883

Masonry

SLABS, paths, driveways brickwork, hollow tile, fences, remodeling, additions Free Est. Charles Dyer Ph. 488-3340 BC7828

Word Processing

STORE Text for future use. Letter quality/modem/mail merge. Classes also. Reasonable rates. Ph. 825-1172.

Finance

NO CREDIT/Bad Credit — we can help you get a new start in life. Don't wait any longer send \$2 today to CGR Associates, suite 3659, Century Ctr. 1750 Kalaheua, Hon., HI 96828

Massage

Takushi Therapeutic Shinkai Massage back problems or pinched nerves? 1048 Kan Hwy, Rm. 207 Ph. 247-2773 or 235-3215 by appointment only License No. MAS 00252

Piano Tuning

POBANZ PIANO SERVICE 262-4260 Dependable tuning & repair service on Oahu for 37 years.

Yard Services

RAINBOW Lawn Service and Landscaping, complete Commercial and Residential care. Ph. 235-0543

Floorcovering

MUTUAL FLOORCOVERING C-1082. Carpets, sheet vinyl, wood flooring, tile. Free est. Brian Taruya 521-3390 or message 839-0233

Moving

LIGHT Moving Jobs including furniture. Reas. rates. Call weekday mornings 538-3009

Plumbing

FRED Domingo Gen. Yard Care, hauling, lot & apt. cleaning. Free Est. Ph. 422-7428

For Fast Results . . .
Call 235-5881 To Place
Your Service Directory Ad

3 Lines
for only
\$4.95 week

• 45 SCHOOLS & TRAINING

SCUBA DIVING - Become certified! Private/semi-private courses. Basic-advance. Call 235-4483.

JOHN Pillani Watkins Polynesian dance studio ages 3 & up. Reasonable rates. Men, women & children. Phone 688-1395 or 877-0307. Classes now open. Hawaiian, Tahitian, Samoan, Maori. Knife dances. SP routines.

PIANO, accordion, voice and guitar lessons. All ages and levels. Call 423-1252.

TRAVEL Career classes - starting Oct. 4. For more information call 848-1758.

PIANO Lessons, Classical, Popular or chord method. Ph. 235-4432.

PIANO Lessons, Beginners to Intermediate. Call 235-1854 evenings.

CONVERSATIONAL Japanese lessons. Openings for 2 students. Call 247-6552.

STAPLES Swim School. 25 yrs. in Kailua. children & adult class. heated pool. 261-1982.

CHINIKY Mahoe's Halau Kawai'ule is opening classes for boys and girls ages 7 and up. Call 261-2113. Call now. Classes soon.

• 50 BUSINESS OPPORTUNITIES

HOME DECOR. If you ever sold or are selling by party or individually and want to increase your income \$200 per week. Ph. 806-8792.

POLYNESIAN Supper club in Arizona, low down, please call 935-8464.

WANT to earn big money? Fashion counselor full/part time. Call 235-0605.

• 60 HELP WANTED MALE & FEMALE

MILITARY BROKE? EVEN ON PAY DAY

Earn extra money pay day 5:30 to 10 p.m. Mon. thru Fri. Workers needed in discount outlets specializing in stereo, televisions, microwave ovens & many more appliances. Also buying service for furniture, clothing, sporting goods, etc. Following areas available: Honolulu, Pearl Harbor, Salt Lake, Wahiawa, Barber's Point & KMCAS.

Sb/hr. or incentive pay. Call 833-4576 speak to Mary.

OPTOMETRIC assistant. optical experience required. Call 261-9735.

SALES Person wanted. Must be reliable, honest & willing to work. Apply in person. Kapoliand Furniture, 747 Kapoliand Blvd., no phone calls.

LOST Your Tri-Chem Instructor? Services, classes, advice. 235-3084, 5 p.m. time jobs. Christmas catalog.

MEDICAL Office Assistant for Kailua physician, full or part time. knowledge of insurance, billing & bookkeeping. sal. open. Call days 261-1515. eves. 261-1414.

• 60 HELP WANTED MALE & FEMALE

SALES Person wanted. Must be reliable, honest & willing to work. Apply in person. Kapoliand Furniture, 747 Kapoliand Blvd., no phone calls.

LOST Your Tri-Chem Instructor? Services, classes, advice. 235-3084, 5 p.m. time jobs. Christmas catalog.

MEDICAL Office Assistant for Kailua physician, full or part time. knowledge of insurance, billing & bookkeeping. sal. open. Call days 261-1515. eves. 261-1414.

• 60 HELP WANTED MALE & FEMALE

SALES Person wanted. Must be reliable, honest & willing to work. Apply in person. Kapoliand Furniture, 747 Kapoliand Blvd., no phone calls.

LOST Your Tri-Chem Instructor? Services, classes, advice. 235-3084, 5 p.m. time jobs. Christmas catalog.

MEDICAL Office Assistant for Kailua physician, full or part time. knowledge of insurance, billing & bookkeeping. sal. open. Call days 261-1515. eves. 261-1414.

• 60 HELP WANTED MALE & FEMALE

SALES Person wanted. Must be reliable, honest & willing to work. Apply in person. Kapoliand Furniture, 747 Kapoliand Blvd., no phone calls.

LOST Your Tri-Chem Instructor? Services, classes, advice. 235-3084, 5 p.m. time jobs. Christmas catalog.

MEDICAL Office Assistant for Kailua physician, full or part time. knowledge of insurance, billing & bookkeeping. sal. open. Call days 261-1515. eves. 261-1414.

• 60 HELP WANTED MALE & FEMALE

SALES Person wanted. Must be reliable, honest & willing to work. Apply in person. Kapoliand Furniture, 747 Kapoliand Blvd., no phone calls.

LOST Your Tri-Chem Instructor? Services, classes, advice. 235-3084, 5 p.m. time jobs. Christmas catalog.

MEDICAL Office Assistant for Kailua physician, full or part time. knowledge of insurance, billing & bookkeeping. sal. open. Call days 261-1515. eves. 261-1414.

• 60 HELP WANTED MALE & FEMALE

SALES Person wanted. Must be reliable, honest & willing to work. Apply in person. Kapoliand Furniture, 747 Kapoliand Blvd., no phone calls.

LOST Your Tri-Chem Instructor? Services, classes, advice. 235-3084, 5 p.m. time jobs. Christmas catalog.

MEDICAL Office Assistant for Kailua physician, full or part time. knowledge of insurance, billing & bookkeeping. sal. open. Call days 261-1515. eves. 261-1414.

• 60 HELP WANTED MALE & FEMALE

SALES Person wanted. Must be reliable, honest & willing to work. Apply in person. Kapoliand Furniture, 747 Kapoliand Blvd., no phone calls.

LOST Your Tri-Chem Instructor? Services, classes, advice. 235-3084, 5 p.m. time jobs. Christmas catalog.

MEDICAL Office Assistant for Kailua physician, full or part time. knowledge of insurance, billing & bookkeeping. sal. open. Call days 261-1515. eves. 261-1414.

• 60 HELP WANTED MALE & FEMALE

SALES Person wanted. Must be reliable, honest & willing to work. Apply in person. Kapoliand Furniture, 747 Kapoliand Blvd., no phone calls.

LOST Your Tri-Chem Instructor? Services, classes, advice. 235-3084, 5 p.m. time jobs. Christmas catalog.

MEDICAL Office Assistant for Kailua physician, full or part time. knowledge of insurance, billing & bookkeeping. sal. open. Call days 261-1515. eves. 261-1414.

• 60 HELP WANTED MALE & FEMALE

SALES Person wanted. Must be reliable, honest & willing to work. Apply in person. Kapoliand Furniture, 747 Kapoliand Blvd., no phone calls.

LOST Your Tri-Chem Instructor? Services, classes, advice. 235-3084, 5 p.m. time jobs. Christmas catalog.

MEDICAL Office Assistant for Kailua physician, full or part time. knowledge of insurance, billing & bookkeeping. sal. open. Call days 261-1515. eves. 261-1414.

• 60 HELP WANTED MALE & FEMALE

SALES Person wanted. Must be reliable, honest & willing to work. Apply in person. Kapoliand Furniture, 747 Kapoliand Blvd., no phone calls.

LOST Your Tri-Chem Instructor? Services, classes, advice. 235-3084, 5 p.m. time jobs. Christmas catalog.

MEDICAL Office Assistant for Kailua physician, full or part time. knowledge of insurance, billing & bookkeeping. sal. open. Call days 261-1515. eves. 261-1414.

• 60 HELP WANTED MALE & FEMALE

SALES Person wanted. Must be reliable, honest & willing to work. Apply in person. Kapoliand Furniture, 747 Kapoliand Blvd., no phone calls.

LOST Your Tri-Chem Instructor? Services, classes, advice. 235-3084, 5 p.m. time jobs. Christmas catalog.

MEDICAL Office Assistant for Kailua physician, full or part time. knowledge of insurance, billing & bookkeeping. sal. open. Call days 261-1515. eves. 261-1414.

• 60 HELP WANTED MALE & FEMALE

SALES Person wanted. Must be reliable, honest & willing to work. Apply in person. Kapoliand Furniture, 747 Kapoliand Blvd., no phone calls.

LOST Your Tri-Chem Instructor? Services, classes, advice. 235-3084, 5 p.m. time jobs. Christmas catalog.

MEDICAL Office Assistant for Kailua physician, full or part time. knowledge of insurance, billing & bookkeeping. sal. open. Call days 261-1515. eves. 261-1414.

• 60 HELP WANTED MALE & FEMALE

SALES Person wanted. Must be reliable, honest & willing to work. Apply in person. Kapoliand Furniture, 747 Kapoliand Blvd., no phone calls.

LOST Your Tri-Chem Instructor? Services, classes, advice. 235-3084, 5 p.m. time jobs. Christmas catalog.

MEDICAL Office Assistant for Kailua physician, full or part time. knowledge of insurance, billing & bookkeeping. sal. open. Call days 261-1515. eves. 261-1414.

• 60 HELP WANTED MALE & FEMALE

SALES Person wanted. Must be reliable, honest & willing to work. Apply in person. Kapoliand Furniture, 747 Kapoliand Blvd., no phone calls.

LOST Your Tri-Chem Instructor? Services, classes, advice. 235-3084, 5 p.m. time jobs. Christmas catalog.

MEDICAL Office Assistant for Kailua physician, full or part time. knowledge of insurance, billing & bookkeeping. sal. open. Call days 261-1515. eves. 261-1414.

• 60 HELP WANTED MALE & FEMALE

SALES Person wanted. Must be reliable, honest & willing to work. Apply in person. Kapoliand Furniture, 747 Kapoliand Blvd., no phone calls.

LOST Your Tri-Chem Instructor? Services, classes, advice. 235-3084, 5 p.m. time jobs. Christmas catalog.

MEDICAL Office Assistant for Kailua physician, full or part time. knowledge of insurance, billing & bookkeeping. sal. open. Call days 261-1515. eves. 261-1414.

• 60 HELP WANTED MALE & FEMALE

SALES Person wanted. Must be reliable, honest & willing to work. Apply in person. Kapoliand Furniture, 747 Kapoliand Blvd., no phone calls.

LOST Your Tri-Chem Instructor? Services, classes, advice. 235-3084, 5 p.m. time jobs. Christmas catalog.

MEDICAL Office Assistant for Kailua physician, full or part time. knowledge of insurance, billing & bookkeeping. sal. open. Call days 261-1515. eves. 261-1414.

• 60 HELP WANTED MALE & FEMALE

SALES Person wanted. Must be reliable, honest & willing to work. Apply in person. Kapoliand Furniture, 747 Kapoliand Blvd., no phone calls.

• 60 HELP WANTED MALE & FEMALE

NEED a Resume? Call Mr. Pool 9 a.m./9 p.m. 235-5112 or 595-4908. Mobile Resume Services.

NURSES

needed now for Home Care assignments. Excellent wages and benefits.

NO FEES

Call 955-1102

Medical Personnel Pool

NEED Extra Income? Earn it in your spare time. Call 488-5667 for app'l.

KAILUA/KANEHOE JOBS

Bank Teller start \$700. Laboratory trainee \$600 mo. 2 Sales Clerks to \$700.

Med. Recept. wages open. Part time Bookkeeper \$55. Part time Dental Asst. \$33.35.

RN or LPN to \$800. Auto body person \$55.

Kokua Employment Service 767 Kailua Rd., 2nd Fl. 207. Service wages welcome.

MODELS

Male or female, no experience necessary. New York West Agency is now interviewing in photo testing for models to work with our agency. For appointment call 523-0735. Not a school.

KEYPUNCH Operators - full time. For immediate openings in Pearl Harbor area. Exp. required. Also supervisory position available. For interview call 923-7671 ext. 337. ask for Mr. Joseph or apply at State Employment Service, 1040 So. King St.

EXCL Childcare, Milliani 18 mos. or older, teacher. Activities, etc. Mon.-Sat. days/eves. 623-3040.

• 60 GARAGE & LANAI SALES

WORLD'S Largest Yard Sale, a cavalcade of junk & junk never used. Gerrard turntables, ladies clothes, housewares, books, 52 gal. hot water tank, air cond., bathtub, dbl. bed; B&W TV, turn; loads of plants Sat & Sun. 8-2 p.m., 232 Awekeke Rd. Kailua.

HUGE Sale: bikes; TV; baby items; toys; plants; misc. 875 Kane St., Kailua, Sat. 9-2.

350 AUWINALA Rd., Kailua, nr. Enchanted Lake. Mormon Ch., beds, rattan furn., books, kitchen misc. Sat. 9/25, 9-12 p.m.

GARAGE Sale: Baby crib; body building set; couch; table; radio. 45-878 Keneko St., Kaneohe.

3 FAMILY Garage Sale! Plants, clothes, children's toys, games. 274 N. Kalaheo Ave. 9 a.m. to 1 p.m., Sun., Sept. 26.

MULTI-Family yard sale, 9/25, 9-5, toys, clothes, furn., fence. 1943 Benfold, Catlin Park.

Former AMWAY Distributors WANTED for NEW PROFITABLE Marketing Plan. 239-7267.

MODELS

Male or female, no experience necessary. New York West Agency is now interviewing in photo testing for models to work with our agency. For appointment call 523-0735. Not a school.

TYPIST part time approx. 4 hrs. a day. Word proc. exp. required \$5 per hr. 262-0626.

NEEDLECRAFTER - creative circle needs instructors, exciting & bookkeeping. sal. open. Call 422-0821.

COSMETOLOGIST-Hair Dressers needed for Wai'aleale Beauty Salon. Call 677-8609. 689-5506, eves.

MANAGEMENT Trainees in necklace & costume jewelry. Kailua. Ph. 262-7116.

GOOD JOBS ARE AVAILABLE!

Professional resume open doors. Military Specialists. Free Consultation. PROFESSIONAL RESUME SERVICE. 735 Bishop St. #238 - 521-7901. 25 Years Experience.

• 62 DOMESTIC HELP WANTED

WANTED: Ambitious, honest, housekeeper, 1 day a week. Wai'aleale/Seaview area. Refs. requested. 671-0407.

WHEELCHAIR person need help personal care attendant. Call Judy 537-3451.

YOUNG student or retired person needed for light house work, 4 to 8 hrs. per wk. for 12 to 16 wks. Small household with 2 adults located behind Windward Shopping Center. Min. wage or better. Negotiable. 247-0939 between 9 & 6 p.m.

• 63 SITUATIONS WANTED

EXPERIENCED Licensed baby-sitter looking for children, any age. Call 262-9445.

EXPERIENCED Child care, any age. Ahulimua School transp. T.L.C. Ph. 239-9488.

EXPERIENCED Sitter will care for your child in my home. Ph. 235-4311.

GARDENER (University AG Graduate) seeks employment Windward/Hawaii Kai area. Refs. 262-5752.

CHRISTIAN nurse's aid/companion looking for live-in elderly/invalidd person. my home exp. T.L.C. 262-9455.

BABYSITTING KMCAS, large fenced yard, drop-ins welcome. 254-5856.

LIVE in your home baby sitter, cook, housekeeper \$50 a week. Call days 624-4176 (Schoolfield area).

EXCL Childcare, Milliani 18 mos. or older, teacher. Activities, etc. Mon.-Sat. days/eves. 623-3040.

• 68 GARAGE & LANAI SALES

WORLD'S Largest Yard Sale, a cavalcade of junk & junk never used. Gerrard turntables, ladies clothes, housewares, books, 52 gal. hot water tank, air cond., bathtub, dbl. bed; B&W TV, turn; loads of plants Sat & Sun. 8-2 p.m., 232 Awekeke Rd. Kailua.

HUGE Sale: bikes; TV; baby items; toys; plants; misc. 875 Kane St., Kailua, Sat. 9-2.

350 AUWINALA Rd., Kailua, nr. Enchanted Lake. Mormon Ch., beds, rattan furn., books, kitchen misc. Sat. 9/25, 9-12 p.m.

GARAGE Sale: Baby crib; body building set; couch; table; radio. 45-878 Keneko St., Kaneohe.

3 FAMILY Garage Sale! Plants, clothes, children's toys, games. 274 N. Kalaheo Ave. 9 a.m. to 1 p.m., Sun., Sept. 26.

MULTI-Family yard sale, 9/25, 9-5, toys, clothes, furn., fence. 1943 Benfold, Catlin Park.

Former AMWAY Distributors WANTED for NEW PROFITABLE Marketing Plan. 239-7267.

MODELS

Male or female, no experience necessary. New York West Agency is now interviewing in photo testing for models to work with our agency. For appointment call 523-0735. Not a school.

TYPIST part time approx. 4 hrs. a day. Word proc. exp. required \$5 per hr. 262-0626.

NEEDLECRAFTER - creative circle needs instructors, exciting & bookkeeping. sal. open. Call 422-0821.

COSMETOLOGIST-Hair Dressers needed for Wai'aleale Beauty Salon. Call 677-8609. 689-5506, eves.

MANAGEMENT Trainees in necklace & costume jewelry. Kailua. Ph. 262-7116.

GOOD JOBS ARE AVAILABLE!

Professional resume open doors. Military Specialists. Free Consultation. PROFESSIONAL RESUME SERVICE. 735 Bishop St. #238 - 521-7901. 25 Years Experience.

• 68 GARAGE & LANAI SALES

WORLD'S Largest Yard Sale, a cavalcade of junk & junk never used. Gerrard turntables, ladies clothes, housewares, books, 52 gal. hot water tank, air cond., bathtub, dbl. bed; B&W TV, turn; loads of plants Sat & Sun. 8-2 p.m., 232 Awekeke Rd. Kailua.

HUGE Sale: bikes; TV; baby items; toys; plants; misc. 875 Kane St., Kailua, Sat. 9-2.

350 AUWINALA Rd., Kailua, nr. Enchanted Lake. Mormon Ch., beds, rattan furn., books, kitchen misc. Sat. 9/25, 9-12 p.m.

GARAGE Sale: Baby crib; body building set; couch; table; radio. 45-878 Keneko St., Kaneohe.

3 FAMILY Garage Sale! Plants, clothes, children's toys, games. 274 N. Kalaheo Ave. 9 a.m. to 1 p.m., Sun., Sept. 26.

MULTI-Family yard sale, 9/25, 9-5, toys, clothes, furn., fence. 1943 Benfold, Catlin Park.

Former AMWAY Distributors WANTED for NEW PROFITABLE Marketing Plan. 239-7267.

MODELS

Male or female, no experience necessary. New York West Agency is now interviewing in photo testing for models to work with our agency. For appointment call 523-0735. Not a school.

TYPIST part time approx. 4 hrs. a day. Word proc. exp. required \$5 per hr. 262-0626.

NEEDLECRAFTER - creative circle needs instructors, exciting & bookkeeping. sal. open. Call 422-0821.

COSMETOLOGIST-Hair Dressers needed for Wai'aleale Beauty Salon. Call 677-8609. 689-5506, eves.

MANAGEMENT Trainees in necklace & costume jewelry. Kailua. Ph. 262-7116.

GOOD JOBS ARE AVAILABLE!

Professional resume open doors. Military Specialists. Free Consultation. PROFESSIONAL RESUME SERVICE. 735 Bishop St. #238 - 521-7901. 25 Years Experience.

• 68 GARAGE & LANAI SALES

WORLD'S Largest Yard Sale, a cavalcade of junk & junk never used. Gerrard turntables, ladies clothes, housewares, books, 52 gal. hot water tank, air cond., bathtub, dbl. bed; B&W TV, turn; loads of plants Sat & Sun. 8-2 p.m., 232 Awekeke Rd. Kailua.

• 68 GARAGE & LANAI SALES

GARAGE/PLANT Sale. Ige. size mums/plants & other goodies. 10-5 p.m. Sept. 25. 822 Kailua Dr., Kailua.

SAT. 10-2 p.m. 146-1 Noke St. New 45 pc. Mikasa china \$99. sm. desk, \$30, port. dishwash- er, dresser w/mirror. Many household & baby items.

MOVING Sale Sat 9 a.m. 444 Dune Cir. child's lg. wood swing set; compl. home office w/all system; lawn mower; 628 '80 Mazda; 79 Buick Century sta. wagon. many more items.

BABy items, pones, misc. household items. Sat. 9/25, 9-1 p.m. 1411 Kupua St., Kailua.

YOUTH Bed, matching chest; lawn mower, color TV, much more. 181 Alkali Lp. Fri./Sat. 254-5739.

3 FAMILY Garage Sale. Sat. and Sun. only. 9/25 & 26. 9-5; typewriter, 6 drawer chest; lamps, hide-a-bed; antiques; Hawaiian quilts; paintings; Nihao Shells; and misc. 48-334 Ilili Street.

GARAGE Sale, plus Avon inflatable boat, Sat., 9/25, 8-2 p.m. 721 Wanaao Pl., Kailua.

SAT. 9/25, 9-2 p.m. Couch, chair, baby items, toys, clothes. 1919 Kailua Dr., Kailua.

• 75 APTS. PARTLY FURN.

LANIKAI: studio, kitchen, bath, separate entrance, yard, 1/2 block to beach, emete preferred, refs. employed a must \$250 mo. 262-2707.

KAILUA. 614 Wai'aleale, 2 bdrm. cool & clean, parking, \$400. Ph. 235-0551, 261-0446.

KAILUA Studio, no pets, rent plus \$325. 262-6462.

• 76 RENTALS TO SHARE

KANEHOE: Male to share w/same, 2 bdrm., \$212 + utils. Call 235-2976 or 923-0277.

AIEA Heights, house to share, private room & bath, quiet. Prefer male non-smoker. Mountain view. \$350 per month. Call 467

103 OFFICES FOR RENT

KANEHOE OFFICE SPACE
[Excellent location across new Windward Mall Shopping Center.] 3-story beautiful garden bldg. Present tenants: Cattle Memorial Hosp., X-Ray and Health Center. Physicians of many specialties. Territorial Savings & Loan, Beautician, Travel Bureau, Real Estate Developers.
ONLY ONE VACANCY AVAILABLE.
Area: 1,521 sq. ft. Beautiful open beam ceilings.
WALTER ZANE REALTY, INC.
4605 Kawa St., Kaneohe
PH. 235-6020

108 BUSINESS PROPERTY FOR SALE OR RENT

FOR Lease or rent, Kure's Auto Repair Shop in Waialeale, Kauai, Oct. 1, Call 622-2857 or 623-8745 Peter.

114 REAL ESTATE FOR SALE

MINNESOTA, the possible dream: 5 fabulous tree covered acres. Incredible hunting, fishing, farming & snomobile. Many lakes, close to major city. Electric and phone available. \$5000 full price \$5000 down, \$59.13 a mo. including 10% interest. Call 595-3692.

40 ACRES COLORADO \$10,500 \$145,000. 1000 ft. of acre, silverware, old pocket watches, autos. Owner. 806-376-9690.

ASSUME \$40,000 VA LOAN at 9 1/4%, 1.477 Acres - Sunset Hills, Haleiwa 3 bdrm. 2 bath Architecturally Designed Coastal Home with separate maid's quarters. Flexible terms, make us an offer Catherine Aiu, Realtor 696-6648

2-BDRM., 1-bath home on large lot in peaceful Kaawala for sale by owner. Near ocean with breathtaking mountain and ocean views. Big deck, sliding glass doors. Old garage/workshop with water, electricity. Short term lease with purchase in fee possible. 20 minutes from new shopping center. \$80,000 or best offer. Call Ken, 237-8567 or 235-5883.

WAIHAWA Specious 1 bdrm. 1 bath, fee unit at North Brook, \$81,000. ML51071. Glen Fontillas (RA) 456-1346. Tenaga Realty 488-7769.

WAIHAU, 3 bdrm., 1 bath homes w/fenced yards, \$87,000-\$75,000, lease. MLS 6730 & 6287. Glen Fontillas (RA) 456-1346. Tenaga Realty 488-7769.

BIG ISLAND - Volcano Nali, Park border 3 bdrm. cedar house on large lot, electric (FS) \$65,000. Excl. financing. Call Bill Eisenhart (RA) Foxfire Realty, Hilo, 935-5765

HAUKU Village - choice 3 bdrm., 2 bath home w/mountain & ocean view, quiet location within walking distance of schools, college & new shopping center. 235-0836 for app't.

KAAAWA 2-bdrm. home. \$77,500. Large lot with palms, ocean and mountain views. Walk-to-walk carpet, sliding glass doors, large spacious wrap-around deck. Lease \$2000. Call 235-5883 or 237-8567 or 239-7758

RENT Plus counseling. Should you buy or rent? Call today for free personal analysis. You may be surprised with results. Preferred Properties 526-3943. After 8 488-8715

WIN A HOME
Send \$1 for contest rules to: Creative Ownership, P.O. Box 2828, Deak 5, Kailua Kona, Hawaii 96740

ANSWER TO SEPT. 15 CROSSWORD IN THE SUN PRESS NEWSPAPER

Across: 1. MASHING, 2. PLEAS, 3. BULL, 4. ALIEN, 5. ENRAGE, 6. TUB, 7. STINGING, 8. PEN, 9. PANTHER, 10. MURKIN, 11. STOLE, 12. TUSSE, 13. SMITH, 14. CORE, 15. STIMUL, 16. ANO, 17. STUARD, 18. OTHER, 19. COLOR, 20. WAG, 21. HATCH, 22. BIRD, 23. BIRD, 24. BIRD, 25. BIRD, 26. BIRD, 27. BIRD, 28. BIRD, 29. BIRD, 30. BIRD, 31. BIRD, 32. BIRD, 33. BIRD, 34. BIRD, 35. BIRD, 36. BIRD, 37. BIRD, 38. BIRD, 39. BIRD, 40. BIRD, 41. BIRD, 42. BIRD, 43. BIRD, 44. BIRD, 45. BIRD, 46. BIRD, 47. BIRD, 48. BIRD, 49. BIRD, 50. BIRD, 51. BIRD, 52. BIRD, 53. BIRD, 54. BIRD, 55. BIRD, 56. BIRD, 57. BIRD, 58. BIRD, 59. BIRD, 60. BIRD, 61. BIRD, 62. BIRD, 63. BIRD, 64. BIRD, 65. BIRD, 66. BIRD, 67. BIRD, 68. BIRD, 69. BIRD, 70. BIRD, 71. BIRD, 72. BIRD, 73. BIRD, 74. BIRD, 75. BIRD, 76. BIRD, 77. BIRD, 78. BIRD, 79. BIRD, 80. BIRD, 81. BIRD, 82. BIRD, 83. BIRD, 84. BIRD, 85. BIRD, 86. BIRD, 87. BIRD, 88. BIRD, 89. BIRD, 90. BIRD, 91. BIRD, 92. BIRD, 93. BIRD, 94. BIRD, 95. BIRD, 96. BIRD, 97. BIRD, 98. BIRD, 99. BIRD, 100. BIRD, 101. BIRD, 102. BIRD, 103. BIRD, 104. BIRD, 105. BIRD, 106. BIRD, 107. BIRD, 108. BIRD, 109. BIRD, 110. BIRD, 111. BIRD, 112. BIRD, 113. BIRD, 114. BIRD, 115. BIRD, 116. BIRD, 117. BIRD, 118. BIRD, 119. BIRD, 120. BIRD, 121. BIRD, 122. BIRD, 123. BIRD, 124. BIRD, 125. BIRD, 126. BIRD, 127. BIRD, 128. BIRD, 129. BIRD, 130. BIRD, 131. BIRD, 132. BIRD, 133. BIRD, 134. BIRD, 135. BIRD, 136. BIRD, 137. BIRD, 138. BIRD, 139. BIRD, 140. BIRD, 141. BIRD, 142. BIRD, 143. BIRD, 144. BIRD, 145. BIRD, 146. BIRD, 147. BIRD, 148. BIRD, 149. BIRD, 150. BIRD, 151. BIRD, 152. BIRD, 153. BIRD, 154. BIRD, 155. BIRD, 156. BIRD, 157. BIRD, 158. BIRD, 159. BIRD, 160. BIRD, 161. BIRD, 162. BIRD, 163. BIRD, 164. BIRD, 165. BIRD, 166. BIRD, 167. BIRD, 168. BIRD, 169. BIRD, 170. BIRD, 171. BIRD, 172. BIRD, 173. BIRD, 174. BIRD, 175. BIRD, 176. BIRD, 177. BIRD, 178. BIRD, 179. BIRD, 180. BIRD, 181. BIRD, 182. BIRD, 183. BIRD, 184. BIRD, 185. BIRD, 186. BIRD, 187. BIRD, 188. BIRD, 189. BIRD, 190. BIRD, 191. BIRD, 192. BIRD, 193. BIRD, 194. BIRD, 195. BIRD, 196. BIRD, 197. BIRD, 198. BIRD, 199. BIRD, 200. BIRD, 201. BIRD, 202. BIRD, 203. BIRD, 204. BIRD, 205. BIRD, 206. BIRD, 207. BIRD, 208. BIRD, 209. BIRD, 210. BIRD, 211. BIRD, 212. BIRD, 213. BIRD, 214. BIRD, 215. BIRD, 216. BIRD, 217. BIRD, 218. BIRD, 219. BIRD, 220. BIRD, 221. BIRD, 222. BIRD, 223. BIRD, 224. BIRD, 225. BIRD, 226. BIRD, 227. BIRD, 228. BIRD, 229. BIRD, 230. BIRD, 231. BIRD, 232. BIRD, 233. BIRD, 234. BIRD, 235. BIRD, 236. BIRD, 237. BIRD, 238. BIRD, 239. BIRD, 240. BIRD, 241. BIRD, 242. BIRD, 243. BIRD, 244. BIRD, 245. BIRD, 246. BIRD, 247. BIRD, 248. BIRD, 249. BIRD, 250. BIRD, 251. BIRD, 252. BIRD, 253. BIRD, 254. BIRD, 255. BIRD, 256. BIRD, 257. BIRD, 258. BIRD, 259. BIRD, 260. BIRD, 261. BIRD, 262. BIRD, 263. BIRD, 264. BIRD, 265. BIRD, 266. BIRD, 267. BIRD, 268. BIRD, 269. BIRD, 270. BIRD, 271. BIRD, 272. BIRD, 273. BIRD, 274. BIRD, 275. BIRD, 276. BIRD, 277. BIRD, 278. BIRD, 279. BIRD, 280. BIRD, 281. BIRD, 282. BIRD, 283. BIRD, 284. BIRD, 285. BIRD, 286. BIRD, 287. BIRD, 288. BIRD, 289. BIRD, 290. BIRD, 291. BIRD, 292. BIRD, 293. BIRD, 294. BIRD, 295. BIRD, 296. BIRD, 297. BIRD, 298. BIRD, 299. BIRD, 300. BIRD, 301. BIRD, 302. BIRD, 303. BIRD, 304. BIRD, 305. BIRD, 306. BIRD, 307. BIRD, 308. BIRD, 309. BIRD, 310. BIRD, 311. BIRD, 312. BIRD, 313. BIRD, 314. BIRD, 315. BIRD, 316. BIRD, 317. BIRD, 318. BIRD, 319. BIRD, 320. BIRD, 321. BIRD, 322. BIRD, 323. BIRD, 324. BIRD, 325. BIRD, 326. BIRD, 327. BIRD, 328. BIRD, 329. BIRD, 330. BIRD, 331. BIRD, 332. BIRD, 333. BIRD, 334. BIRD, 335. BIRD, 336. BIRD, 337. BIRD, 338. BIRD, 339. BIRD, 340. BIRD, 341. BIRD, 342. BIRD, 343. BIRD, 344. BIRD, 345. BIRD, 346. BIRD, 347. BIRD, 348. BIRD, 349. BIRD, 350. BIRD, 351. BIRD, 352. BIRD, 353. BIRD, 354. BIRD, 355. BIRD, 356. BIRD, 357. BIRD, 358. BIRD, 359. BIRD, 360. BIRD, 361. BIRD, 362. BIRD, 363. BIRD, 364. BIRD, 365. BIRD, 366. BIRD, 367. BIRD, 368. BIRD, 369. BIRD, 370. BIRD, 371. BIRD, 372. BIRD, 373. BIRD, 374. BIRD, 375. BIRD, 376. BIRD, 377. BIRD, 378. BIRD, 379. BIRD, 380. BIRD, 381. BIRD, 382. BIRD, 383. BIRD, 384. BIRD, 385. BIRD, 386. BIRD, 387. BIRD, 388. BIRD, 389. BIRD, 390. BIRD, 391. BIRD, 392. BIRD, 393. BIRD, 394. BIRD, 395. BIRD, 396. BIRD, 397. BIRD, 398. BIRD, 399. BIRD, 400. BIRD, 401. BIRD, 402. BIRD, 403. BIRD, 404. BIRD, 405. BIRD, 406. BIRD, 407. BIRD, 408. BIRD, 409. BIRD, 410. BIRD, 411. BIRD, 412. BIRD, 413. BIRD, 414. BIRD, 415. BIRD, 416. BIRD, 417. BIRD, 418. BIRD, 419. BIRD, 420. BIRD, 421. BIRD, 422. BIRD, 423. BIRD, 424. BIRD, 425. BIRD, 426. BIRD, 427. BIRD, 428. BIRD, 429. BIRD, 430. BIRD, 431. BIRD, 432. BIRD, 433. BIRD, 434. BIRD, 435. BIRD, 436. BIRD, 437. BIRD, 438. BIRD, 439. BIRD, 440. BIRD, 441. BIRD, 442. BIRD, 443. BIRD, 444. BIRD, 445. BIRD, 446. BIRD, 447. BIRD, 448. BIRD, 449. BIRD, 450. BIRD, 451. BIRD, 452. BIRD, 453. BIRD, 454. BIRD, 455. BIRD, 456. BIRD, 457. BIRD, 458. BIRD, 459. BIRD, 460. BIRD, 461. BIRD, 462. BIRD, 463. BIRD, 464. BIRD, 465. BIRD, 466. BIRD, 467. BIRD, 468. BIRD, 469. BIRD, 470. BIRD, 471. BIRD, 472. BIRD, 473. BIRD, 474. BIRD, 475. BIRD, 476. BIRD, 477. BIRD, 478. BIRD, 479. BIRD, 480. BIRD, 481. BIRD, 482. BIRD, 483. BIRD, 484. BIRD, 485. BIRD, 486. BIRD, 487. BIRD, 488. BIRD, 489. BIRD, 490. BIRD, 491. BIRD, 492. BIRD, 493. BIRD, 494. BIRD, 495. BIRD, 496. BIRD, 497. BIRD, 498. BIRD, 499. BIRD, 500. BIRD, 501. BIRD, 502. BIRD, 503. BIRD, 504. BIRD, 505. BIRD, 506. BIRD, 507. BIRD, 508. BIRD, 509. BIRD, 510. BIRD, 511. BIRD, 512. BIRD, 513. BIRD, 514. BIRD, 515. BIRD, 516. BIRD, 517. BIRD, 518. BIRD, 519. BIRD, 520. BIRD, 521. BIRD, 522. BIRD, 523. BIRD, 524. BIRD, 525. BIRD, 526. BIRD, 527. BIRD, 528. BIRD, 529. BIRD, 530. BIRD, 531. BIRD, 532. BIRD, 533. BIRD, 534. BIRD, 535. BIRD, 536. BIRD, 537. BIRD, 538. BIRD, 539. BIRD, 540. BIRD, 541. BIRD, 542. BIRD, 543. BIRD, 544. BIRD, 545. BIRD, 546. BIRD, 547. BIRD, 548. BIRD, 549. BIRD, 550. BIRD, 551. BIRD, 552. BIRD, 553. BIRD, 554. BIRD, 555. BIRD, 556. BIRD, 557. BIRD, 558. BIRD, 559. BIRD, 560. BIRD, 561. BIRD, 562. BIRD, 563. BIRD, 564. BIRD, 565. BIRD, 566. BIRD, 567. BIRD, 568. BIRD, 569. BIRD, 570. BIRD, 571. BIRD, 572. BIRD, 573. BIRD, 574. BIRD, 575. BIRD, 576. BIRD, 577. BIRD, 578. BIRD, 579. BIRD, 580. BIRD, 581. BIRD, 582. BIRD, 583. BIRD, 584. BIRD, 585. BIRD, 586. BIRD, 587. BIRD, 588. BIRD, 589. BIRD, 590. BIRD, 591. BIRD, 592. BIRD, 593. BIRD, 594. BIRD, 595. BIRD, 596. BIRD, 597. BIRD, 598. BIRD, 599. BIRD, 600. BIRD, 601. BIRD, 602. BIRD, 603. BIRD, 604. BIRD, 605. BIRD, 606. BIRD, 607. BIRD, 608. BIRD, 609. BIRD, 610. BIRD, 611. BIRD, 612. BIRD, 613. BIRD, 614. BIRD, 615. BIRD, 616. BIRD, 617. BIRD, 618. BIRD, 619. BIRD, 620. BIRD, 621. BIRD, 622. BIRD, 623. BIRD, 624. BIRD, 625. BIRD, 626. BIRD, 627. BIRD, 628. BIRD, 629. BIRD, 630. BIRD, 631. BIRD, 632. BIRD, 633. BIRD, 634. BIRD, 635. BIRD, 636. BIRD, 637. BIRD, 638. BIRD, 639. BIRD, 640. BIRD, 641. BIRD, 642. BIRD, 643. BIRD, 644. BIRD, 645. BIRD, 646. BIRD, 647. BIRD, 648. BIRD, 649. BIRD, 650. BIRD, 651. BIRD, 652. BIRD, 653. BIRD, 654. BIRD, 655. BIRD, 656. BIRD, 657. BIRD, 658. BIRD, 659. BIRD, 660. BIRD, 661. BIRD, 662. BIRD, 663. BIRD, 664. BIRD, 665. BIRD, 666. BIRD, 667. BIRD, 668. BIRD, 669. BIRD, 670. BIRD, 671. BIRD, 672. BIRD, 673. BIRD, 674. BIRD, 675. BIRD, 676. BIRD, 677. BIRD, 678. BIRD, 679. BIRD, 680. BIRD, 681. BIRD, 682. BIRD, 683. BIRD, 684. BIRD, 685. BIRD, 686. BIRD, 687. BIRD, 688. BIRD, 689. BIRD, 690. BIRD, 691. BIRD, 692. BIRD, 693. BIRD, 694. BIRD, 695. BIRD, 696. BIRD, 697. BIRD, 698. BIRD, 699. BIRD, 700. BIRD, 701. BIRD, 702. BIRD, 703. BIRD, 704. BIRD, 705. BIRD, 706. BIRD, 707. BIRD, 708. BIRD, 709. BIRD, 710. BIRD, 711. BIRD, 712. BIRD, 713. BIRD, 714. BIRD, 715. BIRD, 716. BIRD, 717. BIRD, 718. BIRD, 719. BIRD, 720. BIRD, 721. BIRD, 722. BIRD, 723. BIRD, 724. BIRD, 725. BIRD, 726. BIRD, 727. BIRD, 728. BIRD, 729. BIRD, 730. BIRD, 731. BIRD, 732. BIRD, 733. BIRD, 734. BIRD, 735. BIRD, 736. BIRD, 737. BIRD, 738. BIRD, 739. BIRD, 740. BIRD, 741. BIRD, 742. BIRD, 743. BIRD, 744. BIRD, 745. BIRD, 746. BIRD, 747. BIRD, 748. BIRD, 749. BIRD, 750. BIRD, 751. BIRD, 752. BIRD, 753. BIRD, 754. BIRD, 755. BIRD, 756. BIRD, 757. BIRD, 758. BIRD, 759. BIRD, 760. BIRD, 761. BIRD, 762. BIRD, 763. BIRD, 764. BIRD, 765. BIRD, 766. BIRD, 767. BIRD, 768. BIRD, 769. BIRD, 770. BIRD, 771. BIRD, 772. BIRD, 773. BIRD, 774. BIRD, 775. BIRD, 776. BIRD, 777. BIRD, 778. BIRD, 779. BIRD, 780. BIRD, 781. BIRD, 782. BIRD, 783. BIRD, 784. BIRD, 785. BIRD, 786. BIRD, 787. BIRD, 788. BIRD, 789. BIRD, 790. BIRD, 791. BIRD, 792. BIRD, 793. BIRD, 794. BIRD, 795. BIRD, 796. BIRD, 797. BIRD, 798. BIRD, 799. BIRD, 800. BIRD, 801. BIRD, 802. BIRD, 803. BIRD, 804. BIRD, 805. BIRD, 806. BIRD, 807. BIRD, 808. BIRD, 809. BIRD, 810. BIRD, 811. BIRD, 812. BIRD, 813. BIRD, 814. BIRD, 815. BIRD, 816. BIRD, 817. BIRD, 818. BIRD, 819. BIRD, 820. BIRD, 821. BIRD, 822. BIRD, 823. BIRD, 824. BIRD, 825. BIRD, 826. BIRD, 827. BIRD, 828. BIRD, 829. BIRD, 830. BIRD, 831. BIRD, 832. BIRD, 833. BIRD, 834. BIRD, 835. BIRD, 836. BIRD, 837. BIRD, 838. BIRD, 839. BIRD, 840. BIRD, 841. BIRD, 842. BIRD, 843. BIRD, 844. BIRD, 845. BIRD, 846. BIRD, 847. BIRD, 848. BIRD, 849. BIRD, 850. BIRD, 851. BIRD, 852. BIRD, 853. BIRD, 854. BIRD, 855. BIRD, 856. BIRD, 857. BIRD, 858. BIRD, 859. BIRD, 860. BIRD, 861. BIRD, 862. BIRD, 863. BIRD, 864. BIRD, 865. BIRD, 866. BIRD, 867. BIRD, 868. BIRD, 869. BIRD, 870. BIRD, 871. BIRD, 872. BIRD, 873. BIRD, 874. BIRD, 875. BIRD, 876. BIRD, 877. BIRD, 878. BIRD, 879. BIRD, 880. BIRD, 881. BIRD, 882. BIRD, 883. BIRD, 884. BIRD, 885. BIRD, 886. BIRD, 887. BIRD, 888. BIRD, 889. BIRD, 890. BIRD, 891. BIRD, 892. BIRD, 893. BIRD, 894. BIRD, 895. BIRD, 896. BIRD, 897. BIRD, 898. BIRD, 899. BIRD, 900. BIRD, 901. BIRD, 902. BIRD, 903. BIRD, 904. BIRD, 905. BIRD, 906. BIRD, 907. BIRD, 908. BIRD, 909. BIRD, 910. BIRD, 911. BIRD, 912. BIRD, 913. BIRD, 914. BIRD, 915. BIRD, 916. BIRD, 917. BIRD, 918. BIRD, 919. BIRD, 920. BIRD, 921. BIRD, 922. BIRD, 923. BIRD, 924. BIRD, 925. BIRD, 926. BIRD, 927. BIRD, 928. BIRD, 929. BIRD, 930. BIRD, 931. BIRD, 932. BIRD, 933. BIRD, 934. BIRD, 935. BIRD, 936. BIRD, 937. BIRD, 938. BIRD, 939. BIRD, 940. BIRD, 941. BIRD, 942. BIRD, 943. BIRD, 944. BIRD, 945. BIRD, 946. BIRD, 947. BIRD, 948. BIRD, 949. BIRD, 950. BIRD, 951. BIRD, 952. BIRD, 953. BIRD, 954. BIRD, 955. BIRD, 956. BIRD, 957. BIRD, 958. BIRD, 959. BIRD, 960. BIRD, 961. BIRD, 962. BIRD, 963. BIRD, 964. BIRD, 965. BIRD, 966. BIRD, 967. BIRD, 968. BIRD, 969. BIRD, 970. BIRD, 971. BIRD, 972. BIRD, 973. BIRD, 974. BIRD, 975. BIRD, 976. BIRD, 977. BIRD, 978. BIRD, 979. BIRD, 980. BIRD, 981. BIRD, 982. BIRD, 983. BIRD, 984. BIRD, 985. BIRD, 986. BIRD, 987. BIRD, 988. BIRD, 989. BIRD, 990. BIRD, 991. BIRD, 992. BIRD, 993. BIRD, 994. BIRD, 995. BIRD, 996. BIRD, 997. BIRD, 998. BIRD, 999. BIRD, 1000. BIRD, 1001. BIRD, 1002. BIRD, 1003. BIRD, 1004. BIRD, 1005. BIRD, 1006. BIRD, 1007. BIRD, 1008. BIRD, 1009. BIRD, 1010. BIRD, 1011. BIRD, 1012. BIRD, 1013. BIRD, 1014. BIRD, 1015. BIRD, 1016. BIRD, 1017. BIRD, 1018. BIRD, 1019. BIRD, 1020. BIRD, 1021. BIRD, 1022. BIRD, 1023. BIRD, 1024. BIRD, 1025. BIRD, 1026. BIRD, 1027. BIRD, 1028. BIRD, 1029. BIRD, 1030. BIRD, 1031. BIRD, 1032. BIRD, 1033. BIRD, 1034. BIRD, 1035. BIRD, 1036. BIRD, 1037. BIRD, 1038. BIRD, 1039. BIRD, 1040. BIRD, 1041. BIRD, 1042. BIRD, 1043. BIRD, 1044. BIRD, 1045. BIRD, 1046. BIRD, 1047. BIRD, 1048. BIRD, 1049. BIRD, 1050. BIRD, 1051. BIRD, 1052. BIRD, 1053. BIRD, 1054. BIRD, 1055. BIRD, 1056. BIRD, 1057. BIRD, 1058. BIRD, 1059. BIRD, 1060. BIRD, 1061. BIRD, 1062. BIRD, 1063. BIRD, 1064. BIRD, 1065. BIRD, 1066. BIRD, 1067. BIRD, 1068. BIRD, 1069. BIRD, 1070. BIRD, 1071. BIRD, 1072. BIRD, 1073. BIRD, 1074. BIRD, 1075. BIRD, 1076. BIRD, 1077. BIRD, 1078. BIRD, 1079. BIRD, 1080. BIRD, 1081. BIRD, 1082. BIRD, 1083. BIRD, 1084. BIRD, 1085. BIRD, 1086. BIRD, 1087. BIRD, 1088. BIRD, 1089. BIRD, 1090. BIRD, 1091. BIRD, 1092. BIRD, 1093. BIRD, 1094. BIRD, 1095. BIRD, 1096. BIRD, 1097. BIRD, 1098. BIRD, 1099. BIRD, 1100. BIRD, 1101. BIRD, 1102. BIRD, 1103. BIRD, 1104. BIRD, 1105. BIRD, 1106. BIRD, 1107. BIRD, 1108. BIRD, 1109. BIRD, 1110. BIRD, 1111. BIRD, 1112. BIRD, 1113. BIRD, 1114. BIRD, 1115. BIRD, 1116. BIRD, 1117. BIRD, 1118. BIRD, 1119. BIRD, 1120. BIRD, 1121. BIRD, 1122. BIRD, 1123. BIRD, 1124. BIRD, 1125. BIRD, 1126. BIRD, 1127. BIRD, 1128. BIRD, 1129. BIRD, 1130. BIRD, 1131. BIRD, 1132. BIRD, 1133. BIRD, 1134. BIRD, 1135. BIRD, 1136. BIRD, 1137. BIRD, 1138. BIRD, 1139. BIRD, 1140. BIRD, 1141. BIRD, 1142. BIRD, 1143. BIRD, 1144. BIRD, 1145. BIRD, 1146. BIRD, 1147. BIRD, 1148. BIRD, 1149. BIRD, 1150. BIRD, 1151. BIRD, 1152. BIRD, 1153. BIRD, 1154. BIRD, 1155. BIRD, 1156. BIRD, 1157. BIRD, 1158. BIRD, 1159. BIRD, 1160. BIRD, 1161. BIRD, 1162. BIRD, 1163. BIRD, 1164. BIRD, 1165. BIRD, 1166. BIRD, 1167. BIRD, 1168. BIRD, 1169. BIRD, 1170. BIRD, 1171. BIRD, 1172. BIRD, 1173. BIRD, 1174. BIRD, 1175. BIRD, 1176. BIRD, 1177. BIRD, 1178. BIRD, 1179. BIRD, 1180. BIRD, 1181. BIRD, 1182. BIRD, 1183. BIRD, 1184. BIRD, 1185. BIRD, 1186. BIRD, 1187. BIRD, 1188. BIRD, 1189. BIRD, 1190. BIRD, 1191. BIRD, 1192. BIRD, 1193. BIRD, 1194. BIRD, 1195. BIRD, 1196. BIRD, 1197. BIRD, 1198. BIRD, 1199. BIRD, 1200. BIRD, 1201. BIRD, 1202. BIRD, 1203. BIRD, 1204. BIRD, 1205. BIRD, 1206. BIRD, 1207. BIRD, 1208. BIRD, 1209. BIRD, 1210. BIRD, 1211. BIRD, 1212. BIRD, 1213. BIRD, 1214. BIRD, 1215. BIRD, 1216. BIRD, 1217. BIRD, 1218. BIRD, 1219. BIRD, 1220. BIRD, 1221. BIRD, 1222. BIRD, 1223. BIRD, 1224. BIRD, 1225. BIRD, 1226. BIRD, 1227. BIRD, 1228. BIRD, 1229. BIRD, 1230. BIRD, 1231. BIRD, 1232. BIRD, 1233. BIRD, 1234. BIRD, 1235. BIRD, 1236. BIRD, 1237. BIRD, 1238. BIRD, 1239. BIRD, 1240. BIRD, 1241. BIRD, 1242. BIRD, 1243. BIRD, 1244. BIRD, 1245. BIRD, 1246. BIRD, 1247. BIRD, 1248. BIRD, 1249. BIRD, 1250. BIRD, 1251. BIRD, 1252. BIRD, 1253. BIRD, 1254. BIRD, 1255. BIRD, 1256. BIRD, 1257. BIRD, 1258. BIRD, 1259. BIRD, 1260. BIRD, 1261. BIRD, 1262. BIRD, 1263. BIRD, 1264. BIRD, 1265. BIRD, 1266. BIRD, 1267. BIRD, 1268. BIRD, 1269. BIRD, 1270. BIRD, 1271. BIRD, 1272. BIRD, 1273. BIRD, 1274. BIRD, 1275. BIRD, 1276. BIRD, 1277. BIRD, 1278. BIRD, 1279. BIRD, 1280. BIRD, 1281. BIRD, 1282. BIRD, 1283. BIRD, 1284. BIRD, 1285. BIRD, 1286. BIRD, 1287. BIRD, 1288. BIRD, 1289. BIRD, 1290. BIRD, 1291. BIRD, 1292. BIRD, 1293. BIRD, 1294. BIRD, 1295. BIRD, 1296. BIRD, 1297. BIRD, 1298. BIRD, 1299. BIRD, 1300. BIRD, 1301. BIRD, 1302. BIRD, 1303. BIRD, 1304. BIRD, 1305. BIRD, 1306. BIRD, 1307. BIRD, 1308. BIRD, 1309. BIRD, 1310. BIRD, 1311. BIRD, 1312. BIRD, 13

• 166 PICKUPS, TRUCKS

'78 FORD 150 custom 4x4, excel. cond., 1740x15. Brand-new, part job, now motor. \$800/offer. Call 235-2566

'70 FORD F600 truck, tractor, and 18' moving van, sell or trade for Ford pickup-same value. Call 262-4965.

'72 CHEVY Luv. V8, many extras, needs a little work. \$1800/best offer. 202-2241 AWH.

'70 DODGE Pickup, 8 cyl., runs good \$800. Call 262-9887 or 261-8066.

'79 DATSUN, great gas mileage \$2000. Call 281-8066

'70 INTERNATIONAL Pick-up long bed, heavy duty, excel. cond., \$1400. Ph. 261-8828

'72 TOYOTA Pickup, good condition, \$1200/best offer. Call 668-1874 anytime.

LOTS OF 4x4s
PRICE REDUCED
TO SELL AT
WHOLESALE MOTORS
2990 N. Nimitz Hwy. 836-1222

• 171 MOTORCYCLE SALES & SERVICE

'81 YAMAHA HOPPER needs little work, \$150. Ph. 395-6027

'81 YAMAHA 400SH Special, been in storage, like new. Make offer. \$250-3408.

'80 HONDA Hawk w/crash bars, excel. cond., \$1250/offer. Call 672-4748

'78 HONDA 750-Ford, 9,000 mi. faring, 2 helmets \$1600. Ph. 422-5370 after 5 p.m.

1980 HONDA Twinstar, good cond. low mileage, \$750. Call 423-2583

MOPED Puch-Maxi, general overhaul, like new, \$350/offer. Ph. 261-8608, 261-2772

'72 HONDA 350, excel. cond., \$400. Call 254-5645

'77 YAMAHA 750-Skate drive, 18,000 mi. \$1000 or offer. Call 239-8184

'78 SUZUKI RM125 \$600. Call 262-7188

'79 HARLEY ElectraGlide Excl. cond. low mile, AM/FM cassette. Lots of extras \$5500/offer. Ph. 254-4853

• 175 VANS, CAMPER & JEEPS

'79 FORD Van Econo 150, 6 cyl., p/s. Asking \$5995. Call 261-0349.

LOTS OF VANS
PRICE REDUCED
TO SELL AT
WHOLESALE MOTORS
Ph. 836-1222 2990 N. Nimitz Hwy.

5% DOWN
up to
60 mo. financing
with LOANPOWER financing you can take your car to the mainland, paid for or not, OAC.
Above Financing
Available on any Car
\$1500 to \$2500
at
Wholesale Motors
Example
'80 Jeep \$5475

Down payment
\$289.22
Monthly payments
\$159.06
for 60 mos APR 21.7%
WHOLESALE MOTORS
836-1222 2990 N. Nimitz Hwy.

5% DOWN
up to
60 mo. financing
with LOANPOWER financing you can take your car to the mainland, paid for or not, OAC.
Above Financing
Available on any Car
\$1500 to \$2500
Wholesale Motors
Example
'80 B210 Wagon \$3475
auto., radio, roof rack, B&B 378 * tax & lic

Down payment
\$185.05
Monthly payments
\$101.77
for 60 mos APR 21.7%
WHOLESALE MOTORS
836-1222 2990 N. Nimitz Hwy.

5% DOWN
up to
60 mo. financing
with LOANPOWER financing you can take your car to the mainland, paid for or not, OAC.
Above Financing
Available on any Car
\$1500 to \$2500
Wholesale Motors
Example
'80 B210 Wagon \$3475
auto., radio, roof rack, B&B 378 * tax & lic

Down payment
\$185.05
Monthly payments
\$101.77
for 60 mos APR 21.7%
WHOLESALE MOTORS
836-1222 2990 N. Nimitz Hwy.

5% DOWN
up to
60 mo. financing
with LOANPOWER financing you can take your car to the mainland, paid for or not, OAC.
Above Financing
Available on any Car
\$1500 to \$2500
Wholesale Motors
Example
'80 B210 Wagon \$3475
auto., radio, roof rack, B&B 378 * tax & lic

Down payment
\$185.05
Monthly payments
\$101.77
for 60 mos APR 21.7%
WHOLESALE MOTORS
836-1222 2990 N. Nimitz Hwy.

5% DOWN
up to
60 mo. financing
with LOANPOWER financing you can take your car to the mainland, paid for or not, OAC.
Above Financing
Available on any Car
\$1500 to \$2500
Wholesale Motors
Example
'80 B210 Wagon \$3475
auto., radio, roof rack, B&B 378 * tax & lic

Down payment
\$185.05
Monthly payments
\$101.77
for 60 mos APR 21.7%
WHOLESALE MOTORS
836-1222 2990 N. Nimitz Hwy.

5% DOWN
up to
60 mo. financing
with LOANPOWER financing you can take your car to the mainland, paid for or not, OAC.
Above Financing
Available on any Car
\$1500 to \$2500
Wholesale Motors
Example
'80 B210 Wagon \$3475
auto., radio, roof rack, B&B 378 * tax & lic

Down payment
\$185.05
Monthly payments
\$101.77
for 60 mos APR 21.7%
WHOLESALE MOTORS
836-1222 2990 N. Nimitz Hwy.

• 176 AUTOS FOR SALE

AMC

'73 AMC Hornet wagon, 6 cyl., 4 dr., auto., p/s, body fair \$650. 235-2785

AUDI

'77 AUDI Fox, 2 dr., 4 spd., 4 cyl., good cond. \$2495. Call Glen 422-4488 or 423-1867.

BMW

'69 BMW coupe, 41,000 orig. mi., 1 owner, 4 spd., good cond. \$2500 261-4923

CHEVROLET

'71 EL CAMINO \$1500. Phone 237-8030

'74 BLAZER, s/c, p/s, mech. good, needs body work, must sell. \$1800/BO. 621-1037.

LOTS OF CHEVYS
PRICE REDUCED
TO SELL AT
WHOLESALE MOTORS
Ph. 836-1222 2990 N. Nimitz Hwy.

'81 MALIBU, good condition, \$500/best offer. Call 668-1874, anytime.

'78 CORVETTE Anniversary Special, T-top, air, auto., new paint \$8600. 282-2090

'77 CHEVETTE, 2 dr., 4 spd., BRX829 \$1295. Car City 833-3017

LOTS OF CORVETTES
PRICE REDUCED
TO SELL AT
WHOLESALE MOTORS
836-1222 2990 N. Nimitz Hwy.

CHRYSLER

'76 CORDOBA, loaded with all accessories AY7919 \$1295. Car City 833-3017

DATSUN

'80 DATSUN 210, 4 dr., 5 spd., AM/FM stereo, 22,000 mi. ABSOLUTELY MINT COND. \$4100. Call 398-8032 evens. after 6.

'75 DATSUN B210, 4 dr., auto., BPX976 \$895. Car City 833-3017

'80 DATSUN 510, 4 door hatchback, 5 speed, FM stereo, 18,000 miles, 30 mpg, \$4800. Phone 847-9125 or 239-6561

'75 DATSUN B210 hatchback, very good cond. \$1700. Call 521-1191, 948-8558

'78 ACCORD LX 5 spd., air, Michelin tires, \$4800, excl. cond. Call 261-1111.

HONDA

'82 HONDA Accord LX, brown, 5 spd., \$6600. Call 261-1111

'78 ACCORD LX 5 spd., air, Michelin tires, \$4800, excl. cond. Call 261-1111.

WE HAVE A STRAIGHT DEAL FOR YOU . . .

'77 MONTE CARLO Auto. power steering, really clean. (JTC1509) \$2995

'76 VENTURA 4 dr., 6 cyl., air, radio. (JTC1509) \$2195

'76 CAMARO Auto, power steer. (JTC1509) \$3495

'70 GMC PICKUP Auto, power steer. (JTC1509) \$4795

'81 ESCORT Luv. Linda. (JTC1509) \$3595

'78 DATSUN WAGON Auto, AM, VTEC clean. (JTC1509) \$2695

'77 RABBIT Auto, AM, VTEC clean. (JTC1509) \$2895

'78 T-BIRD Tuffy Linda. (JTC1509) \$3495

'79 JEEP CJ5 6 cyl. w/ing. AM radio. (JTC1509) \$5795

PEARLHARBOR
AMC/Jeep
Waipahu We buy cars too! 677-0709

CUTTER FORD
TRANSPORTATION SPECIALS

'74 HORNET Wagon, #1243 \$695

'75 BUICK Skylark, #1240 \$1295

'76 LUV Pickup, #1218 \$1495

'75 DATSUN 710 Station wagon, #1187 \$850

'70 DATSUN 4 dr., #1259 \$295

'74 PINTO Hatchback, #1257 \$395

'75 OLDS Cutlass Supreme, #1256 \$2450

'75 CORDOBA #1295 \$995

'77 GRANADA 4 dr., auto., #1254 \$1895

'77 SUBARU Wagon, auto., #1253 \$1995

'76 BUICK 49,950 mi., #1251 \$13450

'77 CELICA GT 5 spd., #1250 \$2995

'78 HONDA Civic station wagon, #1247 \$2995

'71 FORD F350 Flatbed, 12' bed, #1245 \$2995

'81 FAIRMONT Station wagon, auto., #1225 \$4995

'79 CAPRICE 4 dr. auto., #1217 \$3995

'77 DATSUN Pickup, #1180 \$2995

'81 MALIBU Station wagon, auto., #1223 \$4995

Prices good Sept. 22 to 26

98-015 Kam Hwy., AIEA * Ph: 487-3811

WAIPAHU AUTO
CHEVROLET SALES & SERVICE
671-2871 Division of Service Pacific Inc. Prices Good 9/15 to 9/18

'70 PONTIAC LeMans s/w \$595

'75 PINTO 2 dr., auto., AAE294 \$895

'77 VOLARE 2 dr., auto., p/s, B&B 730 \$1295

'78 CHEVETTE 2 dr., 4 spd., APN852 \$1595

'78 RABBIT 4 spd., ACJ300 \$2395

'78 BUICK OPEL CPE. 2 dr., 4 spd., A/C \$2595

'78 FIAT X-19 4 spd., B7129 \$2795

'78 PINTO s/w Auto, 4 cyl., p/s, 1/6, B&B 400 \$2895

'79 FIAT BRAVA 4 dr., 4 spd., HEC382 \$3295

'80 DATSUN 210 s/w B&B 378 \$4395

'78 TR-7 5 spd., B00363 \$3595

'79 CAMARO BERLINETTA Auto, 8 p/s, VTEC \$5795

'81 VW JETTA 4 dr., 5 spd., AB8503 \$8495

'81 CHEV. P/U 1/2 TON 750TDC \$6995

'82 CAVALIER 4 DR. s/w 4 cyl., auto., AJB108 \$7895

'82 8-10 PICKUP Auto, s/c, B15744 \$8295

Many More to Choose From: Corvettes, Cutlass Supreme, Grand Prix, Trucks, M-720 Farrington Hwy

DODGE

'69 DODGE Dart Convertible \$900. Call 247-2513 after 5:30 p.m.

'77 COLT, 4 dr., auto., BPX827 \$1495. Car City 833-3017

'78 DODGE Aspen, 2 door, blue, 5 spd., stick shift standard. Call 247-2314

'81 DODGE 024, 18,000 mi., 4 spd., air, reardeck spoiler, excl. cond. \$5700. 239-8686

FIAT

'75 FIAT 124 Sports coupe, asking \$1950, priced \$100 below low book. Ph. 521-5578.

FORD

'78 FORD PINTO Wagon, auto. \$1995. DATSUN OF WAHIAWA 621-0751

'77 FORD GRANADA 4 dr., auto. \$1995. DATSUN OF WAHIAWA 621-0761

'75 FORD PINTO Wagon, 4 spd. \$1195. DATSUN OF WAHIAWA 621-0751

'74 FORD Pinto, 2 dr., auto., 4 cyl., \$495. Call 422-4488 or 423-1887 Glen.

'80 FORD Fairmont station wagon, auto., air, rustproofed, excl. cond. \$4900 or offer. 247-3555 or 247-3616

'80 MUSTANG Convertible excl. cond. rust top, paint, tires, \$4300/best offer. 833-6955 after 2 p.m.

HONDA

'82 HONDA Accord LX, brown, 5 spd., \$6600. Call 261-1111

'78 ACCORD LX 5 spd., air, Michelin tires, \$4800, excl. cond. Call 261-1111.

MAZDA

ASK ABOUT OUR WARRANTY 80 MOS./80,000 MI.

LOTS OF MAZDAS
NEW & USED
SLE 825 A/C, Pickup
PRICE REDUCED TO SELL AT
WHOLESALE MOTORS
1000 AIRPORT MAZDAI

MERCURY

'78 ZEPHYR, Must Sell, 6 cyl., air AM/FM \$2405; Call 488-7737, 735-6151 after 5.

MG

'77 MGB, excl. cond., new paint \$4,000 mi. \$3500. Eves. 247-3740

PORSCHE

MUST Sell -- '56 SPEEDSTER Super 1800, \$12,500 -- only serious inquiries. 235-4895.

PONTIAC

'71 FIREBIRD, factory restored, low mileage, new paint, rustproofed, AM/FM cassette w/3 way speaker, excellent in & out, \$2100/best offer. Call 247-2495 after 4 p.m.

'77 PONTIAC Grand Safari wagon, 9 passenger. Make offer. Ph. 823-6561, after 5 p.m.

1978 PONTIAC Sunbird, 2 door, V-6, 5 speed, new paint, \$1200. Call 261-5221.

SUBARU

'81 SUBARU GL, 2 dr. hatchback, blue, 5 spd., air, AM/FM, \$5300. Ph. 833-7323 ask for Dave or Susan.

TOYOTA

'78 CELICA GT, 5 spd., AM/FM, dependable, good cond., \$1850/offer. Ph. 282-0369, 247-5018

'74 CELICA GT, 5 spd., AM/FM, dependable, good cond., \$1850/offer. Ph. 282-0369, 247-5018

'78 TRIUMPH Spitfire, 28,000 miles, new brakes, muffler & top, radio & cassette, no rust \$2800. 254-2010

'74 COROLLA, 4 dr., auto. BPX833 \$1495. Car City 833-3017

'74 CELICA GT, 5 spd., AM/FM, dependable, good cond., \$1850/offer. Ph. 282-0369, 247-5018

'78 TRIUMPH Spitfire, 28,000 miles, new brakes, muffler & top, radio & cassette, no rust \$2800. 254-2010

'74 COROLLA, 4 dr., auto. BPX833 \$1495. Car City 833-3017

'74 CELICA GT, 5 spd., AM/FM, dependable, good cond., \$1850/offer. Ph. 282-0369, 247-5018

'78 TRIUMPH Spitfire, 28,000 miles, new brakes, muffler & top, radio & cassette, no rust \$2800. 254-2010

'74 COROLLA, 4 dr., auto. BPX833 \$1495. Car City 833-3017

'74 CELICA GT, 5 spd., AM/FM, dependable, good cond., \$1850/offer. Ph. 282-0369, 247-5018

'78 TRIUMPH Spitfire, 28,000 miles, new brakes, muffler & top, radio & cassette, no rust \$2800. 254-2010

'74 COROLLA, 4 dr., auto. BPX833 \$1495. Car City 833-3017

'74 CELICA GT, 5 spd., AM/FM, dependable, good cond., \$1850/offer. Ph. 282-0369, 247-5018

'78 TRIUMPH Spitfire, 28,000 miles, new brakes, muffler & top, radio & cassette, no rust \$2800. 254-2010

'74 COROLLA, 4 dr., auto. BPX833 \$1495. Car City 833-3017

'74 CELICA GT, 5 spd., AM/FM, dependable, good cond., \$1850/offer. Ph. 282-0369, 247-5018

'78 TRIUMPH Spitfire, 28,000 miles, new brakes, muffler & top, radio & cassette, no rust \$2800. 254-2010

'74 COROLLA, 4 dr., auto. BPX833 \$1495. Car City 833-3017

'74 CELICA GT, 5 spd., AM/FM, dependable, good cond., \$1850/offer. Ph. 282-0369, 247-5018

'78 TRIUMPH Spitfire, 28,000 miles, new brakes, muffler & top, radio & cassette, no rust \$2800. 254-2010

'74 COROLLA, 4 dr., auto. BPX833 \$1495. Car City 833-3017

'74 CELICA GT, 5 spd., AM/FM, dependable, good cond., \$1850/offer. Ph. 282-0369, 247-5018

'78 TRIUMPH Spitfire, 28,000 miles, new brakes, muffler & top, radio & cassette, no rust \$2800. 254-2010

'74 COROLLA, 4 dr., auto. BPX833 \$1495. Car City 833-3017

'74 CELICA GT, 5 spd., AM/FM, dependable, good cond., \$1850/offer. Ph. 282-0369, 247-5018

'78 TRIUMPH Spitfire, 28,000 miles, new brakes, muffler & top, radio & cassette, no rust \$2800. 254-2010

'74 COROLLA, 4 dr., auto. BPX833 \$1495. Car City 833-3017

'74 CELICA GT, 5 spd., AM/FM, dependable, good cond., \$1850/offer. Ph. 282-0369, 247-5018