

**To the top
Heaven's only
3,922 steps away
Page A-8**



**Fund drive
Units add sport
to Navy Relief effort
Page A-10**

**Hobby shops
Inflation savers offered
by Special Services
Page B-1**

**Party
H&MS-24 pigs out
at day-long luau
Page B-6**

HAWAII MARINE

Voluntary payment for delivery to MCAS housing/\$1 per four week period.

VOL. 11 NO. 23

KANEOHE BAY, HAWAII, JUNE 9, 1982

TWENTY-FOUR PAGES



Squad conquers combat competition

by LCpl Jose Esparra

QUANTICO, Va. — The 1982 Marine Corps Annual Rifle Squad Combat Competition is over and has become a part of history. But, to the members of 1st Squad, 1st Platoon, Company "E", 2d Battalion, 3d Marines it will forever be judged in their memory as an event to remember.

They were crowned with the honor of being the Corps' top rifle squad for 1982. Coming out on top of eight other units proved to be no small task, but their esprit de corps and determination as a unit propelled them to seek the top honor. The Super Squad trophy will remain with the 3d Marines for the rest of the year until it is time for next year's Super Squad to take possession of it.

Led by Sergeant Jack Lawrence, the squad representing the 1st Marine Brigade were honored for their performance during an Evening Parade at Marine Barracks, Washington, D.C. May 14.

The 1982 Super Squad members are: squad leader, Sgt Jack Lawrence; 1st team leader, Cpl James Rogers; automatic

rifleman, LCpl Robert Jones; grenadier, LCpl Joe Williams; rifleman, PFC Anthony Mathis; 2nd team leader, Cpl Daniel Durant; automatic rifleman, Cpl Robert Bozica; grenadier, LCpl Thomas Forbes; rifleman, LCpl Jeffery Ferguson; 3rd team leader, Cpl Lawrence Denecke; automatic rifleman, LCpl Lawrence Trujillo; grenadier, LCpl Keith Helsel; rifleman, LCpl John Richard; corpsman, HM3 Francis Bell; and alternate, PFC Ian McManus.

The officer in charge was First Lieutenant James Sanders and the staff noncommissioned officer was Gunnery Sergeant W.W. Harris.

Lawrence said, "I attribute our success to our leaders and the way we trained. The basic difference from last year's training was that less emphasis was placed on 'in the rear' training, more emphasis was on actual combat training."

"I set my sights on winning, but thought we had only taken third or fourth place. There were two squads that gave us trouble but we ended up blowing them away."

Lieutenant General Richard Carey, commanding general, Marine Corps Development and Education Command,

presented the trophy to the winning squad. He also awarded each squad member a gold rifle squad combat competition badge authorized for wear with the service uniform.

Coming in second place and receiving silver badges were the Marines and corpsman from the 3d Squad, 1st Platoon, Company "B", 1st Battalion, 9th Marines. They were led by Sgt Joseph Torres.

Coming in third place and receiving bronze badges were the men from the 3d Squad, 3d Platoon, Company "L", 3d Battalion, 5th Marines. They were led by Sgt Daniel Alba.

The ceremony at 8th and "I" culminated many months of training for the more than 120 Marines and sailors representing each of the Corps' nine active regiments.

Though there are 13 men in a squad; the responsibility for all the men falls upon the shoulders of the squad leader.

It is the squad leader who leads his men through whatever obstacle that comes in the way of executing the mission... and that's what occurred a few weeks ago as the nine squad leaders led their men through seven events, which were as close to combat as simulation can permit.

The first event of the competition was divided into six phases and tested the marksmanship of each individual.

The first phase involved firing the M-16 while phase two tested the effectiveness of the automatic rifleman who fired at silhouette targets. Phase three saw the squads demonstrate their prowess with the LAAW while the grenadiers tested their claim to fame in phase four.

In phase five, the squad leader was tasked with calling in fire support. He was evaluated for effectiveness. Phase six saw the Marines on a night shoot to show their ability to engage in night combat.

The squads tackled the Basic School Stamina Course during the second event of the competition.

The 2.8-mile course has 22 obstacles and while it takes endurance to complete, physical strength isn't necessarily the key to finishing the course with a good time.

At the conclusion of the course, each squad was inspected for gear that might have dropped while running the course.

The third event took each squad on a daytime security patrol where they faced an ambush by enemy forces. This tested the squads' response to sniper fire and their handling of enemy prisoners and

confidential information.

Event No. 4 placed each squad on the attack. Dropped into a landing zone by a CH-46, the squads received their five-paragraph orders to attack the enemy and eliminate their defenses. At one point in the event, they were issued live ammunition to fire at pop-up targets.

Combat Town was the scene for event five as the squads attacked enemy forces occupying the town. After routing the enemy, treating their casualties, they set up in the defense, anticipating a counter attack.

In the sixth event of the competition, each squad was tasked with conducting a mechanized attack.

On the final day of the competition, the squad leaders and fire team leaders from each squad had to traverse a land navigation course that tested their knowledge of the compass and map.

Now that the competition is over, the squads have gone back to their units. They've taken with them a sense of accomplishment that comes with knowing they made it to the final nine. Though only one squad received the title "Super Squad 1982," deep in their camouflaged hearts they gave their all.

Brigade

Change of command scheduled for Friday

Brigadier General Jacob W. Moore will become the new commanding general of the 1st Marine Brigade during a change of command ceremony Friday at 3 p.m. The ceremony will be held at the flight line here.

Present commanding general, BrigGen L.H. Buehl, who has commanded the brigade since April 9, will report to Headquarters Marine Corps, Washington, D.C. as the Director of the Facilities and Service Division, Installation and Logistics Department.

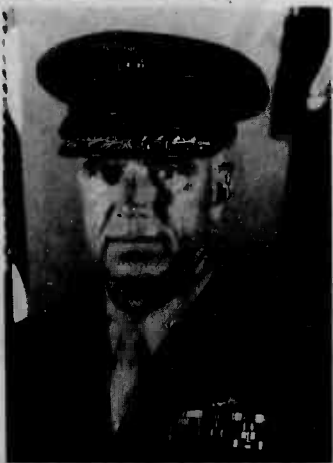
BrigGen Moore flew 350 combat missions during the Vietnam War and holds the Distinguished Flying Cross and the Bronze Star Medal among his many decorations.

BrigGen Moore, a versatile pilot, has accumulated 7,000 flight hours in numerous aircraft, including the F-8 Crusader, the F-4 Phantom, AV-8 Harrier and the F-18 Hornet.

The general is also a designated helicopter pilot and has qualified in numerous rotary wing aircraft. He has also flown several experimental models.

BrigGen Moore participated in the first trans-Pacific flight of a Marine Corps fixed wing squadron and was also a flight instructor at Corry Field and Forest Sherman Field, Pensacola, Fla.

During his 32-year career, Moore has served as a platoon commander, Air/Naval Gunfire Platoon (Camp Lejeune, N.C.); squadron executive officer, squadron commander and brigade operations officer (all at the 1stMarBde);



Brig Gen Jacob Moore

and wing operations officer and aircraft group commander (MCAS Beaufort, S.C.). He also served two tours at HQMC as an aviation monitor and as Head, Aviation Plans, Programs and Budget Branch.

He is presently Deputy Chief of Staff for Research, Development and Studies, HQMC.

BrigGen Moore is married to the former Gail Coulter of Catawba, N.C. They have two children, Traci and Jacob Jr.



Federal Week Program

QUESTIONS AND ANSWERS — Corporal Melanie Henderson, Marine Barracks, Hawaii, tells Elizabeth Swain, 8, and Joshua Tabor, 10, about the Marine Corps. The display was part of the federal government's

displays at Kahala Shopping Center during Federal Week. The special week gives the government the opportunity to show the public how their taxes are used. (Photo by Sgt Greg Berry)

ATTENTION

The Honolulu Police Department requests that the caller with code number 255 please contact HPD Crime Stoppers. Please use your code number.

Quarters

Yuma's housing policy changes

by Sgt R. C. Cordes

MARINE CORPS AIR STATION, YUMA, ARIZ. — If you're a noncommissioned officer with orders to MCAS Yuma, then a change to the station housing policy will be of interest to you.

Beginning with personnel having housing assignment dates of April 9, 1982 or later, there will be mandatory assignment to station housing for all sergeants and corporals with over two years of service.

According to Jean Mancel, housing division director here, "There must be a 98 percent occupancy rate to allow married personnel the option of residing off-station. At the present time, with the projected summer orders and the new housing opening up, there is no way that a 98 percent rate can be achieved without mandatory assignment."

"While we won't rule out the possibility of redesignating some of the new quarters for staff NCOs and officers someday and making it mandatory for them also, there are no plans at the present time for that."

"There will be exceptions in the

policy of course, but they will be on a case-by-case basis with no blanket exemptions given out," concluded Mancel.

One reason for the over abundance of quarters is the planned opening of 132 sets of two-bedroom NCO quarters, 128 in a separate housing area approximately three miles from the station.

The remaining four units will be on station and are officially designated environmental experimental modular housing. In reality, these are considered underground housing.

While not entirely underground, the quarters are built five feet below ground level, and unlike futuristic housing, these have windows.

According to Willard Patterson, supervisory civil engineer with ROICC here, "The units are being constructed to see how effective it is in keeping temperatures comfortable in the rooms without constantly running the air conditioning (or heat). The units will also measure the effect that the partially underground construction will have on the amount of noise that can be heard in the quarters from aircraft taking off and landing."

Ombudsman



If you have a question or complaint about the content of the *Hawaii Marine* — or a suggestion or compliment — please telephone our Ombudsman, Gunnery Sergeant Theresa Gallagher, at 257-2178.

GySgt Gallagher, the Joint Public Affairs media operations chief, will endeavor to answer your questions and complaints through impartial investigations. She will accept calls between 7:30 a.m. and 4:30 p.m. Mondays through Fridays. Selected complaints and responses will be printed on a weekly basis.

Would you
be as proud of
any other job?

Marine.



HANGAR GYM — Marines take time out to enjoy the facilities at the Hangar 103 Gymnasium. The gym is the only indoor court available; however, a new multi-million dollar gym under construction adjacent to Barracks 1633 is scheduled to open by early next year. (Photo by Sgt Chris Taylor)

CONSOLIDATED THEATRES

KAM DRIVE-IN "SUPER" SWAP MEET EVERY WED, THUR, SAT. & SUN. • 7 AM to 3 PM • 488-5822	
WAIKIKI Beside Ft. Kalahele • 923-2204	KAM DRIVE-IN Moanalua rd. Kam Hwy. • 488-3835
STARTS FRIDAY In 70mm Stereo SORRY, NO PASSES "E.T." (PG) Call Theatre For Show Times	ENDS TOMORROW CONAN THE BARBARIAN (R) 7:30 & 11:45 PM "THE ISLAND" (R) 9:45 PM Gates Open at 6:30 PM
2 In 70mm Dolby Stereo SYLVESTER STALLONE "ROCKY III" (PG) 12:30 • 2:30 • 4:30 NO PASSES 6:30 • 8:45 & 10:45 PM	STARTS FRIDAY NO PASSES "E.T." (PG) "ELECTRIC HORSEMAN" (PG) Gates Open at 6:15 PM Show Starts at 7:30 PM
WAIKIKI #3 Kalahele rd. Beside • 923-5352	PEARL RIDGE Pearlridge Center • 487-5561
LAST 9 DAYS CONAN THE BARBARIAN (R) 12:15 • 3:00 5:45 • 8:30 & 11:00 PM	STARTS FRIDAY MARINO LOVE (R) A LITTLE SEX (R) Call Theatre For Show Times
KUHO 2095 Kuho • 941-4422	WINNER OF 4 ACADEMY AWARDS "CHARIOTS OF FIRE" (PG) Tonight 5:45 • 8:00 & 10:30 PM
"VISITING HOURS" (PG) Tonight 6:30 • 8:45 & 10:45 PM	WINNER OF 3 ACADEMY AWARDS "ON GOLDEN POND" (PG) Tonight 6:15 • 8:30 & 10:30 PM
CINERAMA King rd. Kalahele • 941-5291	KAM Adah Park Shopping Ctr. • 254-1330
ENDS TOMORROW "DORIS" (R) Shows 6:30 • 8:30 & 10:30 PM	FRIDAY, TUESDAY "ARTHUR" (PG) "RICHARD PRIOR LIVE ON SUNSET STRIP" (R) Call Theatre For Show Times
VARSITY University rd. Beside • 946-4144	KAILUA DRIVE-IN 917 Pal Highway • 261-6032
STEVE MARTIN DEAD MEN DON'T WEAR PLAID (PG) Tonight 6:30 • 8:15 & 10:00 PM	NO PASSES "ROCKY III" (PG) 7:30 • 11:30 PM "CLASH OF THE TITANS" (PG) 9:30 PM ONLY Gates Open at 6:30 PM
KAPOLANI 1868 Kapaolu • 955-5115	LIBERTY 1178 Nuuanu • 537-1686
NO PASSES "POLTERGEIST" (PG) In Dolby Stereo Shows 6:00 • 8:15 & 10:45 PM	STARTS TOMORROW ALL NEW "4 INFERNO TO CROSS" "KILLER FROM ABOVE" Call Theatre For Show Times
ASIAN CINEMA Beside Ft. Kalahele • 946-9644	TOYO 1220 College Wb. • 538-1654
STARTS FRIDAY "HOMING PIGEON" PART I With Subtitles Call Theatre For Show Times	STARTS TOMORROW Fleming Film "DART KILLING" KITA UTOS NI TALE HINOI MABALIAN Call Theatre For Show Times
HAWAII 1130 Berni • 536-3300 All Seats \$1.80 FRIDAY THRU SUNDAY	"RICHARD PRIOR LIVE ON SUNSET STRIP" (R) "STIR CRAZY" (R) Call Theatre For Show Times

STANLEY SEWING MACHINE

IS BACK IN KANEOHE WITH A SAVINGS SPECTACULAR!

CLEANING • OILING • ADJUSTING TENSIONS

REGULAR PRICE — \$19.95

• WITH COUPON — \$9.95

OR
10% OFF FULL SERVICE & REPAIR

Offer good at all four locations

SPECIAL SAVINGS!
COUPON
good thru 6/30/82

KANEHE
45-773 Kam Hwy. • 235-0222
Located before HONDA STORE

HONDA STORE

KAM HWY. 45-773

AIEA-99-149 Moanalua Rd. next to Alea Library • 487-1090
KAILUA across from Holiday Mart Theater • 261-2020
KALIHU-1270 N. King St. across from Kapalama Post Office • 845-0328

BULLETIN:

Every Goodyear
tire in stock,
is on sale
for two days only.

If you really want a great deal and a great tire, starting tomorrow and for 2 days, every Goodyear tire in our store will go on sale. Arriva, All-Season Radials, Tiempo, Custom Polysteel, White Letter Hi Performance Eagle Radials, Light Truck Tires and more.

But hurry. The sale ends
Saturday at 6:00* P.M.

* NOTE: Some Stores and Dealers Have Different Hours. Please Check Listing Below for Exact Hours.



Car card for identification and honored only at Goodyear Service Stores
Use any of these ways to buy: Goodyear Revolving Charge Account
• MasterCard • Visa • American Express • Carte Blanche
• Diners Club • Cash

GOODYEAR

COME
UP TO
GOODYEAR
QUALITY
& INNOVATION

UNCONTESTED DIVORCE

(far terms to which both parties agree)

\$225 including tax and court fees

UNCONTESTED ADOPTIONS

\$225 including tax and court fees

SIMPLE WILLS

\$50 single, \$75 couple

OTHER FEES UPON REQUEST

BARBARA LEE

MELVIN

National Delegate — National Association
of Women Lawyers

521-7496

evenings and weekends by appointment

TLA SPECIAL

FREE
IN HOUSE
MOVIES

\$3500
+ TAX

per night for a family of four when occupying the same room
ECONOMICAL — and extensive — Children's menu.
PAYMENT — arranged to suit your requirements — first
night's deposit, then charge room and meals till your
Temporary Living Allowance payment comes in.
CONVENIENTLY — located to all military bases on Oahu.
COMPLIMENTARY — welcome cocktail party.

Whaler's Port Restaurant
w/Entertainment
Red Whalers Lounge
Air Conditioned Rooms
Guest Laundromat
Swimming Pool
Color TV
Room Service
Gift Shop
Barber & Beauty
Shop
On-Premises Car Rental
Free Guest Parking
Meeting & Banquet Facilities
Free 24 Hour Airport
Shuttle Service

"Call Us A Family Hotel"

3253 S. Nimitz Hwy
Honolulu, HI 96819

Phone (808) 846-4636

An IRONWOOD Resort

**RAMADA
INN A**



BEDROOM EYES

NEW! Two Week
Sleep-In Lens!

Wear up to 2 weeks without removing.
Special Introductory Price

\$199
Reg. \$265

Permalens
by
CooperVision

Inquire also about standard soft lenses \$99

Includes lenses, care kit, solution & case. All follow up visits with the
"Doctor. All required visits. Same day service in most cases.

MUST BRING THIS AD IN FOR THE SPECIAL!!

DR. TIM TOGIKAWA

PEARL CITY

Optometrist
DOWNTOWN
1146 Union Mall
538-6226

Dr. Edlin Endo
96-1238 Kakaheanu St.
Suite 301
487-7907

June 30, 1982

After
Springs

TLA
APPROVED

Pepper Tree
APARTMENT HOTEL

• 2 & 1 Bedrooms
• Children Welcome
• TV, Pool, Laundromat
• Maid's Service, Free Phone
• Close to most bases with
transportation available



488-1993

HAWAII MARINE

The Hawaii Marine is an unofficial newspaper published every Wednesday by RFD Publications, Inc., 46-016 Alaloa St., Kaneohe, Hawaii 96744, in the interest of U.S. Marine Corps personnel in Hawaii. All news copy is prepared in the Joint Public Affairs Office, Marine Corps Air Station, Kaneohe Bay, Hawaii 96863, 257-2179.

Copy must be submitted no later than noon Thursday for the following Wednesday publication. Hawaii Marine solicits contributions of information and photographs from all Marine Corps organizations. However, it reserves the right to edit or rewrite material submitted. All advertising is arranged by the publisher, RFD Publications, Inc., telephone 235-5881. Circulation is 8,000.

Everything advertised in this publication must be made available for purchase, use or patronage without regard to race, creed, color, national origin, age or sex of the purchaser, user or patron. A confirmed violation or rejection of this policy of equal opportunities by an advertiser will result in the refusal to print advertising from that source.

Kaneohe Bay

Shopping Center
46-047 Kam Hwy., Kaneohe
HI, 96744 247-6668
Mgr. Philip G. Smith

STORE HOURS:
SAT. 7:30 A.M. to 5 P.M.
MON. THRU FRI.
7:30 A.M. to 8:00 P.M.

Waimalu Plaza

Shopping Center
98-1277 Kaahumanu St.
Alea, HI, 96701 487-0066
Mgr. Wayne Nagai

New engine test facility upgrades performance

The A-4 Skyhawks and F-4 Phantoms flying over Marine Corps Air Station, Kaneohe Bay will soon be operating only after careful examination by a new testing system.

The new testing system, T-6, or A-F32T-6 Gas Turbine Engine Test System, is a modernized, improved version to the Class "C" Gas Turbine Engine Test Facility located in Building 1178. It is used to examine aircraft engines for malfunctions. The system was installed June 1 and should be in use by July 15, according to First Lieutenant Dave Winandy.

Winandy, coordinator for the Facilities Department, said the T-6 tests fixed wing engines, such as the A-4 and F-4. It will also be used on the new F-18 Hornet.

Aircraft engines are dismantled from airframes of the aircraft and taken to H&MS-24 Power Plants to be checked. Before it is put back into the plane after maintenance, the engine is taken to the test cell facility.

There the engine is mounted on a thrust-bed

and hooked up to the instrumentation from the control booth. The engine is then run inside the building while Power Plant personnel check for leaks and electrical problems, as well as for fuel and oil consumption, pressures, and vibrations.

Engines that malfunction are brought back to H&MS-24 Power Plant for maintenance.

Gunnery Sergeant Henry Polomo, staff noncommissioned officer in charge of the Power Plant, explained that the T-6 System is more accurate than the old system.

"The old system used an open dial," he said. "The T-6 system is digital. It is easier to read and follow-up. All the dials have been consolidated into computer modules. If you happen to take your eyes off the module and miss something, the readout will come back to you. On the old system, if you take your eyes off the open dial, you will lose where you're at."

First Lieutenant Don Warmke, Power Plants officer in charge, said that eventually all Class "C" Cells will be using the T-6 System.



THE STATION'S BEST — A Federal Day luncheon Thursday honored 68 nominees for Federal Day awards. The Station's nominees, and other Marine candidates, are (from left): Jack Richardson (Citizen of the Year); Sergeant Steven Peabody (Fleet Marine Force, Pacific, Enlisted Service Member of the Year); Gunnery Sergeant John Lord (Naval Supply Center, Enlisted Service Member of the Year); Warren LeGarie (Federal Manager of the Year); Captain Stan

Sheats (FMP, Pacific, Exceptional Community Service); Lynn Burke (Federal Employee of the Year); Sgt Michael Brock (Enlisted Service Member of the Year); Capt Bill Wood (Military Officer of the Year); and First Lieutenant Lee Halverson (Exceptional Community Service). Richardson was the only one of the group to be selected by the Honolulu-Pacific Federal Executive Board as an award winner. (USMC photo)

At a glance

POV allowance

Service members in receipt of permanent change-of-station orders and who are shipping their vehicles from designated water ports, are entitled to a privately-owned motor vehicle delivery allowance.

The POV delivery allowance implemented Feb. 10, entitles members to 16 cents per mile for driving their POV's from their old permanent duty station to the port designated for loading the vehicle for over-water shipment; and from the port where the vehicle is unloaded to their new permanent duty station.

Also, for members

who are going on temporary additional duty, en route to a new permanent duty station, will be paid the POV delivery allowance from the TAD station to the nearest appointed vehicle port facility.

To receive this allowance, members must present a copy of the shipping document along with their travel claim to the Disbursing Office at their new permanent duty station.

Exchange hours
Effective June 19, the Fort Shafter Main Exchange will be open an hour longer than usual on Sundays. In addition, the store will begin opening an hour

later in the mornings on Saturday.

The new operating hours will be Tuesday through Friday, 10 a.m.-5:30 p.m.; Saturday 10 a.m.-5 p.m.; Sunday, 11 a.m.-4 p.m.; and closed Mondays and holidays.

Timing Lights Recall

Cal Custom/Hawk, manufacturer of automotive products is voluntarily recalling timer lights, models 817 and 822.

The lights, sold through many retailers, including the Army and Air Force Exchange Service, have a non-hazardous defect which might cause them to break down after a short

time. Not all units sold under model numbers 817 and 822 are defective and all timing lights produced since May 15, 1982 have been improved to prevent the defects.

AAFES customers who have purchased a defective Cal Custom/Hawk auto timing light with model numbers 817 and 822 through the Hawaii Area Exchange may return them to their nearest HAAEX service station for a refund or replacement.

Hawaiian Masses

Catholic Hawaiian Masses will be held at the Fort DeRussey Beach June 12 through Sept. 4 each Saturday at 6 p.m.

FAMILY CHIROPRACTIC CENTER



Dr. Lawrence J. Connors, M.A., D.C.

- Headache
- Nervousness
- Neck Pain
- Shoulder-Arm Pain
- Bursitis
- Arthritis
- Backache
- "Pinched Nerve"
- Numbness in Hands or Feet

X-RAY FACILITIES
WORKER'S COMPENSATION
INSURANCE
HEALTH LECTURES
1ST & 3RD SAT. 9:30 A.M.

No Charge For Consultation
CHIROPRACTIC... THE NATURAL
SOLUTION TO HEALTH PROBLEMS

KANEOHE BUSINESS &
PROFESSIONAL CENTER
48-005 Kawa St., Suite 201
235-6677

SOFT CONTACT LENSES ARE:

- Soft, flexible and comfortable
- Easy to wear from the start
- Do not pop out easily



SOFT CONTACT LENSES

\$95

includes standard soft contact lenses, care kit, follow-up care by Dr. Dean and 90 DAY TRIAL PERIOD

EFFECTIVE UNTIL JUNE 30, 1982

Also Available • Soft Contact Lenses for Astigmatism and Continuous Wear • One Day Service for Glasses and Hard Contact Lenses • Immediate Service for Soft Contact Lenses

ONE YEAR GUARANTEE ON ALL GLASSES
COMPLETE PROFESSIONAL VISION SERVICES

DEDICATED TO QUALITY AND SERVICE IN VISION CARE

Dr. Charles Dean
Optometrist

KAILUA
139 Hekili St.
261-9735



BIB's

Family Restaurant

SUMMER TIME DINNER SPECIALS

OPEN 7 DAYS A WEEK

Monday: Country chicken at a country price! Broiled tender half chicken basted with our delicious Bar-B-Que sauce, complete with corn-on-the-cob, rice or country fries and a crisp salad. Only

\$4.75

Tuesday: Down Home Night consisting of grilled liver and onions, corn-on-the-cob with our crisp green salad

\$5.45

BREAKFAST DAILY
7 a.m. to 11 a.m. Sun. 7 a.m. to 1 p.m.
Phone 261-8724

LUNCH DAILY
11 a.m. to 5 p.m.
315 Uluniu St.

DINNER DAILY
5 p.m. to 9 p.m.
Kailua Square

WHEREVER
YOU'RE
GOING,

WORLD

THE MILITARY COMES FIRST WITH WORLD.

AIRWAYS

I've always felt a special kinship toward military people. So you can be sure you get a real break on my airline. Special consideration. VIP treatment. And the very best deal on air fare. For you and your dependents. So check our schedules and air fares with SATO, your military office, or call World, 800-227-1527 or (California only) 800-772-3569.

WORLD AIRWAYS



Holiday Store Hours
Friday, June 11,
Kamehameha Day
9 A.M. to 5 P.M.

Sears

Windward Mall

16 HOUR SALE

Friday, June 11, 9 A.M. to 5 P.M.
Saturday, June 12, 9 A.M. to 5:30 P.M.

BIG SAVINGS

Throughout the Store During
Our 16-hour Sale. Hundreds
of items on sale . . .

Furniture • Major Appliances
TV's • Vac Cleaners • Hardware
Sporting Goods • Housewares
Automotive Needs • Wearing
Apparel and More

Use your SearsCharge account

Prices In This Ad Effective
Friday and Saturday
June 11 and 12

You can count on **Sears**
Satisfaction Guaranteed or Your Money Back

WINDWARD MALL
Please Refer to the Phone
Directory For Our Direct Dial
Department Phone Numbers



PASSING THE COLORS — Colonel Marcel Dube passes the colors to Captain Eric Nielsen after receiving them from Col Frank Koethe. Dube assumed command of Marine Barracks Hawaii Friday. (Photo by Sgt Greg Berry)

Parade

Marine Barracks receives new CO

By Sgt Greg Berry

Colonel Marcel Dube assumed command of Marine Barracks, Hawaii from Col Frank Koethe during a change of command ceremony Friday.

Koethe, who assumed command of the barracks in October 1979, retired after more than 36 years service to the Corps and will remain in Hawaii.

Dube, a former enlisted Marine, is the fifth commanding officer of Marine Barracks, Hawaii and was deputy assistant chief of staff, Fleet Marine Force, Pacific, before assuming command.

The colonel enlisted in the Corps during the Korean conflict and served as a platoon sergeant "C" Company, 1st

Battalion, 5th Marines. He also served as a drill instructor at Parris Island and was stationed with Marine Barracks, Washington, D.C. before being commissioned in 1958.

The Marine officer has been stationed on both coasts and several overseas posts, including combat tours in Korea and Vietnam. His professional training includes several high-level schools with the Marine Corps and two schools with other nations. Dube attended the Royal Marine Commando Course in Malta and the Australian Joint Services Staff College in Canberra, Australia.

The colonel's awards are numerous and include four Bronze Star Medals with combat "V," and four Purple Hearts.

He and his wife Patricia have twin eight-year-old sons, Erik Sean and Marc Christopher.

ADM Foley assumes command of U.S. Naval Pacific Fleet

by JO3 J.G. McLaughlin

PEARL HARBOR, Hawaii — Admiral Sylvester Foley Jr. assumed command of the U.S. Pacific Fleet May 28 in a 10 a.m. ceremony aboard the nuclear powered submarine USS New York City (SSN696).

During the ceremony ADM Foley said, "My emphasis will be on readiness — fleet readiness — just as it was with Admirals Jim Watkins and Tom Hayward who guided this fleet through some rough waters during some very uncertain times. I feel particularly fortunate to inherit a fleet at such a high level of readiness."

SPEAKER FOR THE EVENT was Chief of Naval Operations ADM Thomas Hayward — the Navy's highest ranking officer.

"We're not the largest Navy in the world by any measure," ADM Hayward said. "But we are the finest Navy in the world by every measure. And as long as we, in uniform, are able to find the spirited, talented, dedicated, loyal leaders like Jim Watkins and Bob Foley, to guide this

country in the future, there is reason for us to be very optimistic."

A native of Manchester, N.H., ADM Foley is the 20th admiral to command the U.S. Pacific Fleet since 1941, when the command was established and headquartered here.

ADM Foley, a U.S. Naval Academy graduate, was commissioned an ensign in 1950. In 1952 he was designated a naval aviator.

ADM Foley received a masters degree in International Affairs from George Washington University in 1968 after graduating with distinction from the Air War College, Maxwell Air Force Base, Ala.

He is a former Commander, U.S. Seventh Fleet whose other tours of duty have included command tours at Attack Squadron 106, Attack Carrier Wing 11, USS Coronado (LPD 11) and USS Midway (CV 41). Foley's last assignment was Deputy Chief of Naval Operations for Plans, Policies, and Operations.

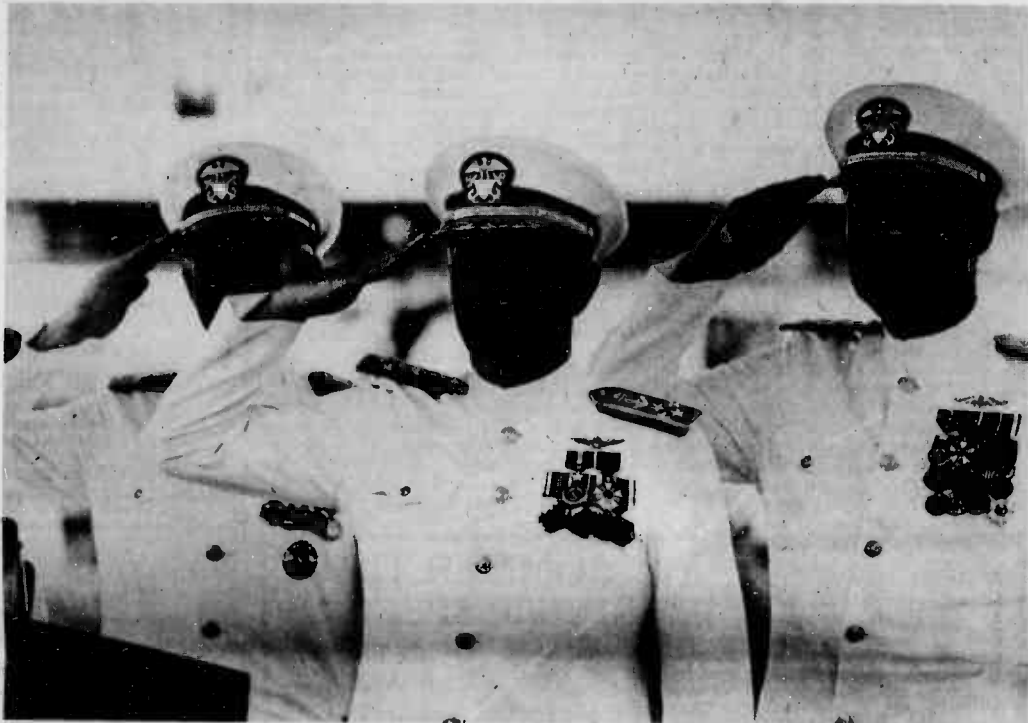
THE FORMER Commander in Chief of the U.S. Pacific Fleet ADM James

area of responsibility covering 102 million square miles, or roughly half the world. Nearly 300,000 active duty, reserve and civilian Navy and Marine Corps members, and about 240 ships, 1,800 aircraft and 65 shore facilities made up the Navy's largest fleet, which ADM Watkins had commanded since July 1981.

ADM Watkins will report to Washington for duty as Chief of Naval Operations, as previously announced. ADM Watkins is a U.S. Naval Academy graduate and was commissioned ensign in 1949. Much of his naval service has been associated with submarines and nuclear power.

The CinCPacFLT band was on hand for the change of command, as was a full-dress honor and color guard. Also included in the ceremony were 17-gun salutes honoring Admirals Watkins and Foley and a 19-gun salute honoring ADM Hayward.

Hundreds of spectators, including military and civilian dignitaries and honored guests, witnessed the change of command.



CHIEF OF NAVAL OPERATIONS Admiral Thomas Hayward, new Commander in Chief, U.S. Pacific Fleet, Admiral Sylvester Foley Jr.,

and the new CNO designate Admiral James Watkins salute colors during the recent Pacific Fleet change of command ceremony aboard the

nuclear-powered submarine USS New York City (SSN 696). (U.S. Navy photo by PH1 Harold Gerwien)



Maj John Morrison
VMFA-212



LtCol Augustus Fitch III
VMFA-232



Maj Richard Ryan
HMH-463



LtCol John Alexander
HMM-262



Capt James Wright
HqCo 1st MarBde



Capt William Miller
3d AAV Bn



Maj Thomas Swindell
H&HS

Change of command ceremonies

by Sgt Corrina Martell

Seven change of command ceremonies took place within the last two weeks.

Four of the seven ceremonies happened within Marine Aircraft Group-24, 1st Marine Brigade.

Lieutenant Colonel Thomas Conley turned over command of Marine Fighter Attack Squadron-212 May 26 to Major John Morrison.

Conley's next assignment will be as the executive officer of Marine Aircraft Group-24.

Morrison completed the Command and Staff College, Quantico, Va. in May 1981 and has served as the executive officer of Headquarters and Maintenance Squadron-24 since August 1981.

LtCol Augustus Fitch III assumed command of VMFA-232 May 27. He relieved LtCol Kevin O'Mara who will report to Twentynine Palms, Calif. as air officer of the 7th Marine Amphibious Brigade.

Fitch also graduated from the Command and Staff College before reporting to Hawaii, and

has served as the assistant chief of staff, G-1, 1st Marine Brigade for the past 11 months.

Also on May 27, the helm of Marine Heavy Helicopter Squadron-463 was turned over to Maj Richard Ryan. Former commanding officer, LtCol D.O. McGaha, will report for duty as the executive officer of Marine Aircraft Group-36, Okinawa, Japan.

Ryan has been selected for lieutenant colonel, and has been the XO of HMH-463 since May 1981.

Thursday, LtCol W.R. Campbell Jr. relinquished command of HMH-262 to LtCol John Alexander. Campbell will be assigned to MAG-24 while awaiting orders.

Alexander served as the MAG-24 operations officer for the past year, and has been selected to attend the Naval War College, Newport, Rhode Island.

The other three change of commands were from ground and station units.

Major H.H. Myers relinquished the helm of Headquarters Company, 1st Marine Brigade to

Captain James Wright May 28.

Myers will be reassigned to Camp Pendleton, Calif. as project officer at the Marine Corps Tactical Systems Support Activity.

Wright was the safety officer at Marine Medium Helicopter Squadron-262.

Captain William Miller took command of Detachment, Company "A", 3d Assault Amphibious Battalion June 4. He relieved Capt Richard Roan, who will report to Houston, Texas as a Marine Officer Instructor at Rice University.

Miller recently graduated from the Armor Officer Advanced Course at the U.S. Army Armor Center, Fort Knox, Ky.

On the station side of the house, LtCol G.W. Boston passed the command of Headquarters and Headquarters Squadron to Maj Thomas Swindell June 4.

Boston will retire July 1 at Treasure Island, Calif. Swindell was the Station Communications Electronics Officer with Station Operations and Maintenance Squadron since July 1981.

Near Term Prepositioning Force

HQMC — One of the most important factors allowing U.S. Armed Forces to respond rapidly and flexibly in areas of potential conflict is the presence of 13 cargo ships currently based in the Indian Ocean. The ships are known as the Near Term Prepositioning Force. They contain the material and supplies which will initially outfit and sustain elements of the Rapid Deployment Joint Task Force if it is ever called into action.

Of these 13 ships, seven directly support the Marine Corps' main contribution to the RDJTF, the 7th Marine Amphibious Brigade. The NTPF carries equipment and supplies to support the 12,000-man MAB, an Air Force wing and a 5,000-man Army brigade for approximately 30 days of sustained combat operations.

NTPF REFERS TO WHAT was formerly known as the Near Term Prepositioning Ship/Expanded Near Term Prepositioning Ship program. The NTPS/ENTPS program grew out of an idea proposed by the Secretary of Defense in August 1979 called the Maritime Prepositioning Ships program. The concept created a new option for increasing the responsiveness of Marine Corps forces requiring immediate and rapid deployment.

The MPS program called for the prepositioning of the majority of the

equipment for a heavily mechanized MAB on board commercial ships deployed to forward areas and manned by Military Sealift Command crews. Then, for a specific contingency or crisis, the equipment would be administratively off-loaded and "married up" with MAB personnel and other equipment which would be flown to the area.

While events were proceeding in the development of the MPS program, global events dictated that immediate steps be taken to enhance U.S. strategic mobility in the near term. The NTPF grew from that requirement.

The first seven ships deployed contained the equipment and supplies earmarked for the 7th MAB, plus some Army and Air Force ammunition and were referred to as the NTPS program. Six additional ships were added to the program and contained equipment, ammunition and supplies for use by the Army and the Air Force as well as Marine Corps units. These additional ships comprised the ENTPS program. Now that both the NTPS and ENTPS programs are operational, they are collectively referred to as the NTPF.

BEYOND THE EXISTING NTPF, the more mature Maritime Prepositioning Ships, with self-contained operating features and on-board

"... the MPS/NTPS (Maritime Prepositioning Ships program/Near Term Prepositioning Ship) initiatives are ones of mobility enhancement... not new forms of amphibious operations."

lighterage, will be phased into service. Enough ships and selected unit equipment and supplies to support three ships will be available by the end of FY84. The strategic deployment and employment concept used for NTPS will be essentially the same as the concept for MPS.

MPS shipping will consist of a total mix of 12 to 15 ships (four-five per brigade) converted by industry to the appropriate design characteristics, and chartered by the Military Sealift Command. The 13 ships of the NTPF consist of three roll-on/roll-off ships, three breakbulk ships, five tankers (one water, four fuel), and two LASH (Lighterage Aboard Ship) vessels. The ships are all manned by civilians.

The administrative nature of the introduction of maritime prepositioning forces requires a "friendly" environment in which to off-load. If the NTPS/MPS forces are to enter a hostile area, then a suitable port and airfield must be seized by amphibious, airborne or other means.

"This requirement, for secure conditions ashore, underlines the primary difference between MPS/NTPS and amphibious operations," said Commandant of the Marine Corps Gen Robert H. Barrow in an ALMAR released early last year. "Simply stated, the MPS/NTPS initiatives are ones of mobility enhancement, not new forms of amphibious operations."

The commandant continued, "forward-deployed MAGTFs (Marine Air-Ground Task Forces) could secure the necessary airfield and port/beach prior to the arrival of the MPS/NTPS MAB. The airlifted MAB could then join the amphibiously landed MAGTF in a reinforcing role, thus providing a force with credible and sustainable combat power."

TO BE READY FOR SUCH a crisis, most of the 13 NTPF ships remain on station (at the island of Diego Garcia) in the Indian Ocean. Routine, periodic maintenance of equipment and

ammunition embarked on the ships is conducted at two locations: Naha Port Facility, Okinawa, Japan; and Subic Bay, Republic of the Philippines. Major tactical equipment and rolling stock requires preventive maintenance every year while ammunition and other equipment is checked about 18 months. The ships themselves require drydocking about every two years.

Periodically, about 200 Marine maintenance specialists from 1 Marine Amphibious Force are deployed from California to inspect and refurbish embarked Marine Corps tactical and communication equipment. These 200 Marines augment Okinawa and Philippine-based specialists in conducting the maintenance, normally drawing on personnel and equipment from the 3d Force Service Support Group.

The results of recent maintenance cycles have indicated that the preventive maintenance program is highly successful.

While the NTPF is not a substitute for the Corps' ability to conduct amphibious operations or its vital need for more amphibious lift, it can significantly improve strategic mobility. Most importantly, it will reduce the time needed for the Marines to reach the battlefield should the RDJTF be called into action.

Stay Marine.



see your
Career Planner
...he can do you
some good.

Reenlistment

Corps establishes retention awards

HQMC, WASHINGTON — The Marine Corps achieved an unprecedented accomplishment during Fiscal Year 1981 — retaining 16,000 Marines through reenlistments.

To foster competition and pride among commands while recognizing superior performance, annual MC Awards for Command Retention Achievement were established.

The program, which began Oct. 1 will recognize commands in three different categories: major, intermediate and small. Major and intermediate commands that attain their goal in each retention category will receive the Commandant's Certificate of Commendation. In addition, the command with the highest total goal percentage will be awarded a plaque-mounted certificate endorsed by the Commandant.

Small commands receive the same recognition except that the plaque will be awarded to the command that reaches the highest goal percentage.

A total of 63 commands have been designated for competition by manpower officials here. There are 20 major commands, 23 intermediate commands and 20 small commands as broken down by Marine Corps Order 1650.33.

Gen Barrow issued a challenge for FY82 — 16,000 reenlistments. "Retention of our quality Marines will continue to be one of the Marine Corps' top priorities," he said. "It is the key to a strong and ready force and vital to our ability to achieve and maintain authorized strength levels."

"Specific goals for each command have been published in the Marine Corps Bulletin 1160 series.

NATO medical meeting scheduled for August

Reserve medical officers from a dozen NATO countries will meet here in early August for the 36th congress of the Interallied Confederation of Medical Reserve Officers.

Otherwise known as CIOMR, for its French title, Confederation Internationale des Officiers Medicaux de Reserve, the organization represents the reserve medical officers of all NATO countries which have reserve forces.

Meeting simultaneously will be the 5th annual conference of the Interallied Confederation of Reserve Officers, representing 360,000 NATO reserve officers.

More than 1,000 are expected for the Aug. 8-15 sessions at the Shenton Washington Hotel. CIOR military athletic competitions will be at Fort Meade, Md., and CIOMR hospital conferences will include Walter Reed Army Medical Center, D.C.; the Uniformed Services University of the Health Sciences and the National Naval Medical Center, Bethesda, Md., and the Air Force Aerospace Physiological Training Facility at Andrews Air Force Base, Md.

The tentative CIOR program includes presentations by Caspar W. Weinberger, Secretary of Defense; Army General Bernard Rogers, Supreme Allied Commander in Europe; and Navy Admiral Harry Train, II, Supreme Allied Commander, Atlantic.

Marine Corps Commandant General Robert H. Barrow will host the Marine Barracks Evening Parade during the conference. Guest of honor at the parade will be Army Gen. John Vessey, Jr., new chairman of the Joint Chiefs of Staff.

The reserve chiefs of all NATO countries will participate in the CIOR sessions while the surgeons general of the Army, Navy, and Air Force will speak to the medical officers' conference.

Events will include ceremonies

at Fort Myer, Va., a wreath laying at nearby Arlington Cemetery, and a Reserve Forces day at Andrews Air Force Base, Md. This will feature displays and demonstrations of personnel and equipment presently assigned to the U.S. reserve components.

The military competitions at Fort Meade will include marksmanship shooting of the pistol, rifle, and submachine gun; obstacle course and utility swimming; and a day-long land navigation orienteering exercise against an aggressor enemy. About 200 officers are expected to participate in these competitions, both as individuals and as teams representing their parent countries.

CIOR was founded in Brussels in 1948 to promote cooperation between the NATO country reserve officers associations and to strengthen the basic solidarity of NATO. The current international president is Lieutenant Colonel Peter J. Jorgenson of Denmark. CIOR vice president for the United States is retired Army Reserve Major General Richard Cooper, Orlando, Fla., assisted by Army Colonel Joseph Gaston, Millersville, Md., Assistant Secretary General for the United States.

President of the medical officers' association, CIOMR, is Surgeon Commander M. J. Allwood of the United Kingdom. Chairman of the U.S. CIOMR delegation is retired Army Reserve Col. Harry Becker, a doctor from Indianapolis, Ind.

Chairman of the congress and representing ROA as the host is retired Air Force Reserve Major General Ted Sorenson of LaGrange, Ill. Information on reservations for the congress is available from his CIOR/CIOMR office at 1 Constitution Ave., N.E., Washington, D.C. 20002.

Military House Cleaning
FREE ESTIMATES
"We're present inspection day"
SUE & DON Cleaning Service
536-4249

REMEMBER...
TOKYO IN THE 60's?
KOREA IN THE 50's?
BANGKOK IN THE 70's?
It's Still Out There!
At Bargain Prices!
THE GREAT ESCAPE TRAVEL CLUB
CALL: 523-1083

IT TAKES MORE THAN BRAINS TO GO TO COLLEGE.
It takes money. For tuition, room and board, and books. And that's just the beginning.
To help meet these costs, the Army proudly introduces the Army College Fund. You can join it, upon qualifying, when you join the Army.
For every dollar you put in, Uncle Sam puts in five. Or more. So, after just two years in the Army, you can have up to \$15,200 for college. After three years, up to \$20,100.
Call for your free copy of the Army College Fund booklet. It could be the most important book you've ever read. Call toll free 800-423-2244.
ARMY. BE ALL YOU CAN BE.
Kaimuki ... 762-6681 Pearl City ... 847-3905
Waiolu ... 671-3934 Wahiawa ... 622-2769
Kalihi ... 847-3905 Kaneohe ... 235-6491

MILITARY RENTERS!
See us about "pooling" your way to home ownership. Use your Rent-Plus program to own a home of your own!
FIRST HOME BUYERS!
1. New Graduated payment plan!
2. No down-payment or minimum \$1900 down on \$75,250 price (VA)
3. New Fabulous 2nd Mortgage Plan with no payment 1st year!
4. From only \$75,250 — Fee Simple 2 bedroom apartment!
5. No escrow costs!
6. Your interest payments and real estate taxes are 100% deductible!
CALL NOW! 623-3111
Sales office open daily 10-5pm
MIKE McCORMACK, REALTORS
A Division of MICHAEL BARNARD, LTD.
Courtesy to Brokers
Waikalani Woodlands
A Planned Community
*See your tax advisors

For the Girls' Day Out
For showers, socials and small talk, pamper yourself in style.
Call Catering, 955-0555.
Events must have a military sponsor.
HALF KOA HOTEL
DON'T THIS JUST DIVINE! HEAVENLY!

1981 TOP SALESPERSON OF THE YEAR, OAHU
1980 MOST EFFECTIVE LISTOR, OAHU
1980 SALESPERSON OF THE YEAR, OAHU
NOE PEREA 621-9334
REALTOR, G.R.I. **488-1991**
MIKE McCORMACK, REALTORS 623-6161

Sears
Sears Tire & Auto Centers
WE INSTALL CONFIDENCE
SAVE \$10
Expert Alignment and Lubrication
Regular \$28.99 **18.99**
We'll set caster/camber and toe to manufacturer's specifications and lubricate the chassis. For most American-made cars. Long Mileage Cars \$8 Extra.
SAVE \$4.41
Oil 'n Filter Change
Regular \$15.29 **10.88**
We'll install up to 5 quarts of Spectrum 10W-40 motor oil and a new Sears oil filter. For most American-made cars.

Complete Brake Job
Disc or Drum
Sears Regular Low Price **139.99**
We'll replace shoes or disc pads, brake fluid and front oil seals. Turn and true drums or rotors. Rebuild wheel cylinders or calipers. Adjust emergency brakes. For most American-made cars. Additional charges for front wheel drive, four wheel disc cars.
FREE Power Team Check
Regular \$5... NOW FREE
We Will Check on Your Cars:
•Battery •Starter •Alternator •Regulator
Ask about Sears Charge
Car Car Savings
Sears Auto Service Coupon Book
For Only **1.99**
Save on repairs. Use all coupons and save a total of \$88.
You can count on Sears
WINDWARD MALL
PHONE 247-8228 AUTO PARTS
AUTO SERVICE 247-8291
Prices in This Ad Effective Wednesday Thru Saturday, June 9 Thru 12

Bankruptcy—highly technical area with serious consequences

All too many of the problems seen by legal assistance officers involve clients who have let debts get out of hand. It goes without saying that the best remedy against winding up in that situation is to manage your financial affairs prudently: in other words, use credit sparingly and only when necessary, and do not live beyond your means. No amount of "easy credit" can change the fact that somewhere down the road the money has to be paid back.

By putting money aside into a savings account on a regular basis, you have some assurance that it will be there to help cushion unexpected expenses, such as a car needing major repairs or a trip home to deal with a family emergency. If debts do mount up, it is usually possible to get out of a temporary tight situation by careful pruning of unnecessary expenses and by communicating with creditors to arrange extensions of payments.

Whatever the situation, trying to hide from creditors is definitely not the answer. Besides being dishonorable, such behavior will make it difficult or impossible to negotiate any accommodations with a creditor, a surprisingly large number of whom are willing to be reasonable when debtors are frank concerning the reason payment cannot be made when due. (And even when the creditor is not cooperative, nothing has been lost by trying.)

Whether bankruptcy is the answer depends on your individual financial situation. Beware the seductive pitch of "do-it-yourself" books. Bankruptcy is not a matter to be embarked upon lightly. The new Bankruptcy Code, which Congress in 1979 makes more attractive than the old one, is nevertheless designed to seek competent financial counsel to determine whether any solution

short of bankruptcy would be workable. Despite what you may have heard, bankruptcy will not necessarily wipe out all your debts nor necessarily is it always true that you will be able to keep most or all of your property. Bankruptcy is a highly technical area of the law, and mistakes can have serious consequences, so it is foolish not to obtain professional advice.

The policy behind the present Federal Bankruptcy Code is twofold: to ensure that one creditor is

not "preferred" to the detriment of another, and to give an honest debtor a "fresh start" by releasing him or her from liability for most kinds of past debts. In the area of consumer bankruptcy, there are two basic approaches: (1) the so-called "straight" or Chapter 7 bankruptcy; and (2) the "wage earner" or Chapter 13 plan.

In a Chapter 7 bankruptcy, the debtor is allowed to keep certain "exempt" property and the excess, if any, is divided among the creditors in proportion to the

amount of the debts owed them. In a Chapter 13 bankruptcy, by contrast, the debtor agrees to make regular payments over a period of time to a bankruptcy trustee who then pays the creditors.

In many cases, the Chapter 13 creditor will receive, over the

period of the plan, 100 percent of the debt owed, but the law also permits repayment plans that pay less than 100 percent if certain conditions are met.

The next two columns in this series will discuss each of these types of bankruptcy proceedings in more detail.

MAINLINER and TRAVEL HOLIDAY Award Winners

L' Auberge

French Cuisine

Superb Dining In A Charming Country French Manner

RESERVATIONS AFTER 2 P.M.

262-4835

117 HEKILI STREET, KAILUA

Your Hosts - Marcel & Elvi Baltzer

Dr. Louann Miele Suppa
Podiatrist - Foot Specialist

- Sports Medicine
- Foot Surgery
- Foot Trauma
- General Footcare
- Diabetic Footcare

Consultation and Treatment By Appointment

PHONE 261-9931

KAILUA 35 Kalnehe St.

MYODONTIC DENTURES

For those people who want superior dentures, we highly recommend this method. We are getting excellent results and they eliminate most of the conventional denture problems.

Kailua Professional Ctr. Suite 503

WINDWARD DENTAL GROUP INC. Lee Hardy, DDS 261-4694

SCHEDULED AIRLINES TICKET OFFICE (SATO)

Staffed by full time Airline personnel To assist in your travel requirements

- Individual leave
- Family travel to the Mainland
- Neighbor Island
- International
- Dependent travel to West-PAC
- Fares
- Flight Information

Contact SATO for reservations and airline tickets at any one of our three convenient on-base locations.

Pearl Harbor Bldg 487 - Tele 422-0571
Office hours - Mon. thru Fri. 0730-1600

Camp Smith - Bldg 2D - Tele 487-1567
Office hours - Mon. thru Fri. 0800-1600

Kaneohe MCAS - Bldg 209 - Tele 254-1564
Office hours - Mon. thru Fri. 0730-1530

Ziebart

APPEARANCE & PROTECTION SERVICES

FREE Rust Inspection

If you have just moved here from the part of the United States west of the Mississippi River, chances are you are not familiar with rust protection. It won't take long for you to become acquainted with the problem of rust in our island climate. Stop in at **WINDWARD AUTO-TRUCK RUSTPROOFING** for a free rust inspection and let us give you the full details of how ZIEBART can make your new OR present car last longer and look better.

SPECIAL PRICE FOR HAWAII MARINES
\$179.00 plus tax
(on most passenger cars—vans and trucks slightly higher)

Call or drive in today!

Ziebart

APPEARANCE & PROTECTION SERVICES
WINDWARD AUTO-TRUCK RUSTPROOFING
789 Kailua Road Kailua, Hawaii Ph. 261-4414

There's only one way to play it...

Wherever the music is hot, the taste is Kool. At any 'tar' level, there's only one sensation this refreshing.

Original

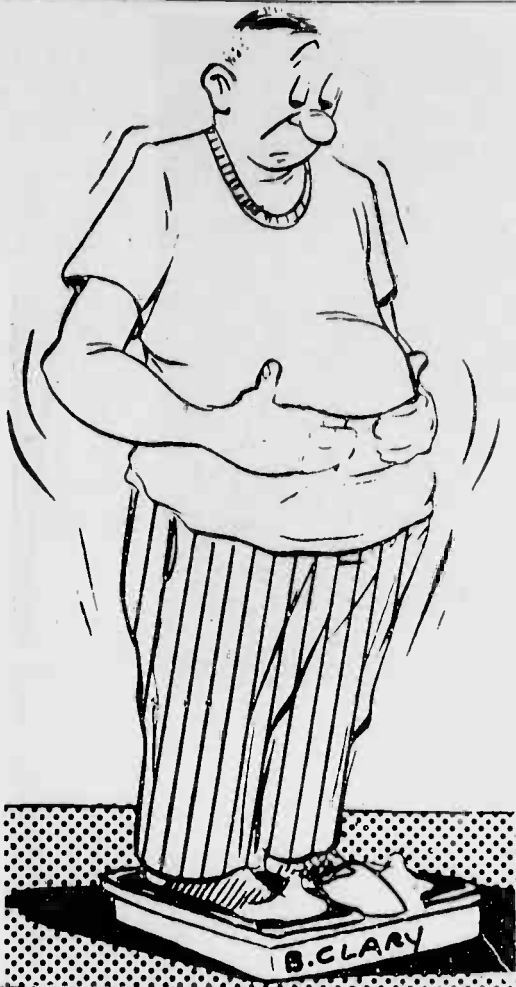
Low 'tar'

2 mg.

Ultra Kings, 2 mg. "tar", 0.3 mg. nicotine; Lights Kings, 9 mg. "tar", 0.8 mg. nicotine av. per cigarette by FTC method; Filter Kings, 16 mg. "tar", 1.1 mg. nicotine av. per cigarette, FTC Report Dec. '81.

Warning: The Surgeon General Has Determined That Cigarette Smoking Is Dangerous to Your Health.

Exercise can combat obesity



SCHOFIELD BARRACKS, Hawaii — Obesity: What is it? Many people think obesity and overweight are the same thing. They're close, but not the same. Obesity is much more serious than simply being overweight.

The American Medical Association defines obesity as "excessive body fat; more than 15 percent over average weight." A person whose correct weight is 150 pounds would be considered obese if his weight increased 22 or 23 pounds.

Overweight is simply defined as, "weight over and above what is required," which can be a matter of one or two pounds over a person's ideal weight. Another difference is that overweight is usually judged in terms of pounds, whereas obesity describes the amount of body fat a person has, as well as excess poundage.

No matter what definition is used, the important facts are the same. Obesity, which was once only a problem of the rich, has attained the stature of a major public health menace. Obesity can destroy your health — and your life.

THE PHYSICAL disadvantages of obesity are obvious. Society in general frowns on the appearance of an excessively fat person, and that person is only too aware of the physical conditioning problems his or her obesity causes.

Small tasks tire out an obese individual. Excessively obese people find it hard to perform even the easiest physical exercise, such as climbing a flight of stairs or walking a short distance. Their hearts beat alarmingly fast as a result of minor activity.

Heart attacks are, in fact, major threats to obese people. There are many other reasons to combat obesity, as well.

The AMA considers obesity an extremely important factor in personal health because of increased sickness and death rates, heart, circulatory, kidney metabolic disorders, and surgical and obstetrical complications which obese persons commonly experience.

Muscle cells are active cells. They are busy all the time, even when a person is resting. For this reason, a well-trained athlete uses

more calories at rest than a sedentary individual does.

PHYSICAL ACTIVITY makes the heart pump more blood and work harder. This increased circulation to the heart muscles protects one from heart attack. The vital artery network stays clear as the blood moves through the arteries quickly and efficiently.

EXERCISE INCREASES the volume capacity of the heart. The individual with a rapid resting heart rate (the result of inactivity) is likely to have a small heart with a limited capacity. Circulatory efficiency is also increased, as those organs and the heart do less work than those of a person in poor condition.

Because exercise decreases obesity and lowers the amount of fat particles in the blood, it helps to prevent the build-up of athero-

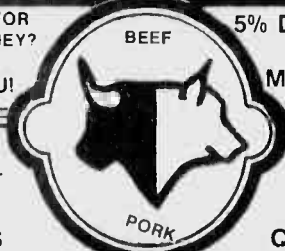
sclerosis, which causes blockage of the arteries. Atherosclerosis often results in heart attacks.

We all know the importance of preventing high blood pressure. Exercise results in a lowering of a person's blood pressure at resting rates.

Finally, exercise requires the lungs to provide more oxygen, which helps maintain lung capacity. The muscles in the chest wall are also put to more vigorous use as they expand and contract the chest cavity.

Now that you're convinced obesity is dangerous, you may be asking yourself why people allow themselves to get that way. Part of this series will look at the psychological and environmental factors that enter into an obese person's life. Part two will show that many obese problems start in the head and home, not in the mouth.

LOOKING FOR
EXTRA MONEY?
WE CAN
HELP YOU!



5% DISCOUNT
ALL
MILITARY

WE
ACCEPT
FOOD
STAMPS

SIDES
AND
QUARTERS

HOW MUCH DO YOU SPEND A
WEEK ON MEAT?

BUY BEEF SIDES AND
FREE SAVE! BONUS
WE'RE

K.C. MEATS

638 N. KING ST.

AND WE CAN SAVE YOU MONEY ON YOUR MEAT
LET US SHOW YOU HOW!

WE OFFER

QUALITY MEAT
TREMENDOUS SAVINGS
PERSONALIZED SERVICE
ALL MEAT CUT TO ORDER!
A FULL GUARANTEE
NEW OWNER

SO CALL

847-1144

848-2484

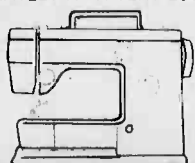
AND SAVE

FACTORY AUTHORIZED
GOOF SALE

RICCAR

A QUANTITY OF SEWING MACHINES DESTINED FOR THE EUROPEAN MARKET WAS MISTAKENLY ELECTRICALLY WIRED FOR THE U.S. MARKET. THE FACTORY HAS AUTHORIZED US TO LIQUIDATE THESE MACHINES IMMEDIATELY AT A VERY LOW PRICE

GOVERNMENT
RATED AHEAD
OF
BERNINA
ELNA
PFaff
SINGER



* OPEN ARM
* ZIG ZAG
* BUTTON HOLES
* BLIND HEMS
* MULTIPLE STRETCH
* DOUBLE GEARING
FOR HEAVY DUTY
* COVER INCLUDED

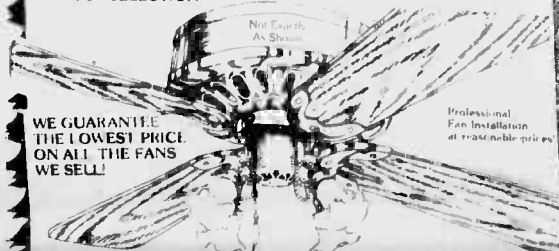
NORMAL
RETAIL
\$475
SALE
ENDS
SUN., 6/13/5 p.m.
\$189

**MAC'S SEWING
REPAIR**
Open Daily 9:00-5:00 a.m. Closed Tuesday
488-9966

PACIFIC SURPLUS
Mon.-Sat. 9:30-6:00, Thurs. till 9:30 p.m.
Sundays 11:00-6:00, Closed Tuesdays
1247 F. Pali Hwy. (1 block Makai of Castle Hosp.)
262-8131

**FIRE
AND
WAREHOUSE
CLEARANCE
SALE**

A major ceiling fan distributor has had a fire in their warehouse, some cars were smoke damaged. "ALL" fans are in perfect condition with FULL FACTORY WARRANTY. HURRY FOR BEST SELECTION.



WE GUARANTEE
THE LOWEST PRICE
ON ALL THE FANS
WE SELL!

Professional
Fan Installation
at reasonable prices

Top of the line Full Brass 52" Zephyr
Loaded with maintenance-free features
Sug. Retail \$399

* Variable Reostat
* Whisper Quiet
* Energy Efficient
* 52" Walnut Wood Blades

\$178

* 5 Yr. Parts & Labor Warranty
* Sealed Bearings
* Reverse Air
* Full Brass Anti-Tarnish

52" HUNTER

Suggested Retail \$358



\$228

Features
* 2 speed
* Hunter quality
* Wide selection
* Limited lifetime warranty

48" S.M.C. UTILITY

Suggested Retail \$126

Features
* 5 year warranty
* Metal blades

\$58

* Metal body
* 5 speed

52" CASABELLA

Suggested Retail \$348

Features
* High quality
cast iron housing
* Super energy
efficient

\$168

* 5 year warranty
* Whisper quiet
* Reverse air flow
* White or brown
* Variable reostat

42" G.A.C. SPECIAL

Suggested Retail \$198

* 5 year warranty
* Super energy
efficient

\$88

* Whisper quiet
* Variable reostat
* Reverse air flow
* High quality

36" HUNTER

Suggested Retail \$298



\$158

Features
* 2 speed
* Hunter quality
* Wide selection
* Limited lifetime warranty

52" CASABELLA W/GOLD

Suggested Retail \$398

Features
* High quality
cast iron housing
* Super energy
efficient

\$178

* 5 year warranty
* Whisper quiet
* Reverse air flow
* White or brown
* Variable reostat

SALE ENDS SUN. 6/13/6 p.m.

RAIN CHECKS AVAILABLE

PACIFIC SURPLUS & DISTRIBUTORS
CALL NOW 262-8131

OPEN Mon-Sat 9:30-6:00, Thurs. 9:30-9:00 p.m., Sunday 11:00-6:00



1247 F. Pali Hwy. (1 block east of Castle Hospital
in the new 7-Eleven Complex in Kalia)



KIKI

83 am

The station that
gives IT free.



THE "HAUNTED" VALLEY — A Hawaiian legend almost halted construction of a Navy Communications Station in the Haiku Valley 40 years ago. It's told that King Kamehameha I, some 100 years prior, had cornered a number of his enemies in this valley and ended their existence,

ancient Hawaiian style. The valley is now the site of Omega Station, Hawaii, one of eight Omega stations around the world transmitting a continuous navigation signal available to anyone using an Omega receiver. (Photo by SSgt Lee Goodson)

"Stairway to heaven"

Mountain valley mystery unfolds

by SSgt Lee Goodson

While looking at the towering Koolau Mountain Range, above the Likie Highway, Kaneohe bound, you can almost hear the "Chariots of Fire" movie theme song as the clouds majestically clear from the dual microwave repeater dishes mounted there.

Anyone who's lived on the Windward side has, no doubt, heard stories about a huge antenna, called "Omega Station" used to transmit navigation signals around the world.

WITH JUST THAT much information and the sighting of the "dishes", the 2+2 factor could easily convince the unknowing that the microwave repeater dishes are, in fact, the mysterious Omega Station, at this very moment transmitting away. Word of a "stairway to heaven" has also leaked out.

What lies within the Haiku Valley is certainly no secret.

FACT: The building directly beneath the microwave repeater dishes, at one time, housed Navy remote control equipment for the operation of the Very Low Frequency Naval Communications Station in the Haiku Valley, below. At the termination of the communications station, all equipment was removed.

FACT: The U.S. Air Force mounted dual microwave repeater dishes on the building as a means of linking Bellows Air Force Station to Hickam Air Force Base. These dishes, dormant since 1959, are not connected with the operation of Omega Station in any way.

FACT: A ladderway does exist in the Haiku Valley that leads up the mountain to the dormant repeater station. The ladderway, nicknamed the "stairway to heaven" by those who have seen the view from the top, was made of wood in the 1940s and '50s. It was replaced by the now visible metal "stairway" in 1955 and '56 by the Navy to provide accessibility to the control building and, at the same time, to the huge "A"-frame antenna span-anchors supporting each span of the long wire antenna.

THE CLIMB ITSELF, going up and coming down the 3,922 steps is exhilarating, action-packed and

exhausting. Taking into consideration the view from the top, some 2,800 feet up, the climb is worth it.

FACT: Omega Station, Hawaii is one of eight Omega stations strategically positioned around the world providing a continuous, radio navigation system available to those navigators on land, at sea and in the air possessing a properly installed Omega receiver. Omega provides an all-weather, continuous, medium accuracy capability of determining position at 95 percent accuracy, or within 2 miles daytime and 4 miles at night. To use Omega, a navigator initiates his automatic receiver properly and then plots his position in latitude and longitude at any time during the voyage.

The United States operates and maintains two Omega stations; one on Oahu, the other in North Dakota. Each station is operated by the partner country in which it's located. These countries include Norway, Liberia, La Reunion, Argentina, Japan and the newest station, Australia, scheduled to begin transmission in August of this year.

THE BUILDING HOUSING

Omega Hawaii's equipment was built in 1942 when the U.S. Navy established a VLF Fleet Communications Station in Haiku Valley. Because of the attack on Pearl Harbor Dec. 7, 1941, the transmitter building was built of bombproof construction with five-foot thick, reinforced, concrete ceilings and four-foot thick reinforced walls. The transmitter building was positioned in the natural horseshoe-shaped Haiku Valley, which proved to be excellent for a long-wire span antenna (which explains the huge "cables" seen traversing the valley from ridge to ridge).

The valley was virtually a jungle of vegetation which hampered construction and caused many delays, however the undergrowth wasn't all. A legend surrounded Haiku Valley.

Into its dripping jungle a century ago, King Kamehameha I drove his enemies and butchered them, every one. Ever since, the valley had been "haunted." This was a complication the contractors would have liked to avoid. But when they began thrashing a road into the amphitheater, they began to dig up skulls and bones. Some Hawaiian truck drivers refused to go in at all and

would dump their machinery and equipment in the village of Kaneohe and promptly leave.

THE NATIVE WORKERS who did go in were so uneasy that the only solution was to give every skeleton an official burial as soon as it was unearthed.

Work continued and progress was made. The completed transmitter with a 4-span wire antenna provided communications throughout the Pacific. The original VLF communications station transmitted at 16.6 kilohertz with 150 kilowatts of power. Omega experiments began in Haiku Valley in the early 1950s with the addition of a fifth span.

In 1957, the Navy Communications Station ceased operation.

Omega operations continued however, with a power increase to 100kw. Testing also continued into the 1960s when the 4-span antenna was overhauled and the fifth span was removed. Testing continued until September 1971.

Then work began to renovate the station to its present configuration, with remodeling to provide office space and a third floor was constructed for the antenna tuning equipment.

OMEGA STATION, HAWAII was operated solely by civilian contractor personnel from its beginning in the early 50s until July 1972 when a contingency group of Coast Guard personnel arrived in preparation of taking over operation of the station. In February 1973 transmissions were secured to remove the 4-span antenna in anticipation of erecting a new 6-span long wire model.

Intermittent transmissions began in mid-1974 and on Feb. 27, 1975, Omega Station, Hawaii was commissioned as a Coast Guard unit and full time operations began.

The station is manned today by a crew of 17 Coast Guard electronic watch standers and two supervisors. Anyone interested in climbing the "stairway to heaven" can do so by contacting the Coast Guard Omega Station Commanding Officer, Chief Warrant Officer-4 William Richardson, at 235-3041. The climbs are by appointment only and are limited to 50 people per day and groups no larger than 12.



ONE STEP AT A TIME — Descending the "stairway to heaven" can be as exciting and thrilling as the climb up. At the top lies the goal of the climb, a dormant microwave repeater station. (Photo by Sgt Chris Taylor)



ONE OF 12 — A lone "A" frame antenna span anchor silently supports one end of the six, long wire span antennas as the Omega Station-Hawaii transmits a continuous navigation signal. (Photo by SSgt Lee Goodson)



A VIEW FROM THE TOP — A bird's-eye view of Kaneohe Bay, plus many areas of Oahu, can be expected by anyone interested in climbing the "stairway to heaven." As one of the dual microwave repeater dishes looms overhead, Corporal

Susan Gentry, of the 1st Marine Brigade's administration section, seems to ask, "... now, how do I get down?" as she sits at an elevation of 2,800 feet. (Photo by Sgt Steven Dixon)



THE MOUNTAIN TOP — The microwave repeater dishes, dormant for more than 20 years, is the end of the line of the "stairway to heaven." The building once contained remote control equipment for the Navy Communication Station in the Haiku Valley below. (Photo by SSgt Lee Goodson)

Quality of life factors affect retention

HQMC — Many factors determine the success of retention of qualified Marines in today's Corps. Perhaps the most prevalent and significant aspects affecting a Marine's decision to reenlist or "go elsewhere" are those areas equated with the Corps' "quality of life."

That subject, among others, was addressed by Lieutenant General Edward Bronars, Deputy Chief of Staff for Manpower, here, before the Subcommittee on Military Personnel and Compensation, Committee on Armed Services, U.S. House of Representatives, last month.

"A SIGNIFICANT consideration in a Marine's career decision is his perception of what he and his family can expect in terms of affording a life style that satisfies fundamental requirements for housing, schooling, medical care and recreation. The steps taken by Congress have had a positive impact on this perception and, as a result, retention has improved. . . I feel confident that personnel deficiencies, both in terms of skills and numbers, can be gradually eliminated. We are almost there and need only make a few additional improvements to be successful."

One of the most important areas that LtGen Bronars alluded to was "pay comparability," and in doing so, he

"The response to recent pay raises has been good, and would indicate that we are at, or very near, competitive levels of the private sector."

emphasized the continuing need for competitive military pay.

"The response to recent pay raises has been good, and would indicate that we are at, or very near, competitive levels of the private sector. Every effort should be made to retain this relative position so that military personnel can feel confident that a career in the military will provide a reasonable standard of living for themselves and their families. They need this sense of confidence in order to justify the personal and family sacrifices that are inherent in a military career."

ON PERMANENT CHANGE of station reimbursements, LtGen Bronars highlighted a particular problem that affects Marines during relocation moves.

"A significant problem that plagues military personnel during the execution of government-ordered relocation is the high

cost of today's travel, a significant part of which is subsidized by the individual. This subsidy of the government on the part of our Marines is particularly difficult to accept since civilian federal employees who are transferred are reimbursed at a higher rate, as are employees in the private sector. The 13 cents per mile rate (current rate for military personnel) should be increased and we should stop requiring the service member to subsidize the government for travel performed in compliance with orders issued."

An increasingly important aspect of Marine Corps life is one's educational background and the continuing need for quality personnel, coupled with the individual's desire for continuing education.

"It's not too early to put in place an

effective educational assistance program that would provide the type of inducement to meet manpower requirements," stated LtGen Bronars. "The ideal educational assistance program would be non-contributory and incentive-oriented, requiring honorable service that could also be transferred to dependents under certain circumstances. The universally recognized long-term benefit to the nation that would result from this type of GI Bill makes the investment doubly attractive."

LTGEN BRONARS discussed other areas including special and incentive pay improvements, the need for a CHAMPUS dental program, increased accompanied tours for career Marines to WestPac, Family Service Centers and increased morale, welfare and recreation programs.

Regarding the military retirement system, LtGen Bronars stressed the fact that the current system is "an important factor in enabling the military services to maintain adequate force levels in a peacetime environment . . . while remaining . . . a very important part of our overall mobilization system and is regarded as something more than just another pension plan."

Further, he pointed out that military retirement is considered by most career Marines to be "a part of their contract,"

and should not be modified without considering the possible adverse effects on personnel and readiness.

"If the decision is made to modify the system, appropriate grandfather provisions should be included as part of the legislation to ensure that promises made . . . to career military personnel who have served, or are now serving, their country in uniform, are honored."

In conclusion, LtGen Bronars underscored the Corps' leadership and professional traits and its "always ready" posture, while emphasizing the need for continued congressional support to maintain those high standards.

"THE OVERALL MARINE Corps personnel situation and all of its supporting programs are healthy and fully capable of satisfying the personnel needs of the Marine Corps, both in peacetime and in the event of mobilization. I thank you for your past support and solicit your continuing support for the requested budget levels necessary to maintain our high standards."

In return, the Marine Corps will continue to field a professional, highly-trained, superbly-disciplined fighting force that is fully capable of accomplishing all missions assigned to this nation's force-in-readiness."

Is there life after the Corps?

Stay Marine.



FREE POSTURAL ANALYSIS AND CONSULTATION



Pacific Chiropractic

DANGER SIGNALS—

1. Frequent Headaches
2. Low Back or Hip Pain
3. Dizziness or Loss of Sleep
4. Numbness in Hands or Feet
5. Nervousness
6. Neck Pain or Stiffness
7. Arm and Shoulder Pain



602 KAILUA RD. SUITE #207 PHONE 261-0831

The personal computer for people who take success personally.



OSBORNE 1

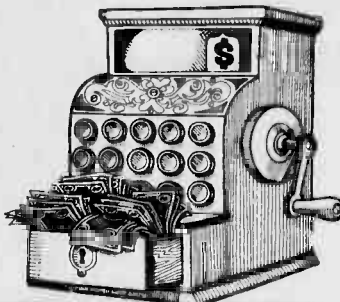
And Epson MX 80 C/F/T

Father's Day Special \$2395.00

ComputerLand

567 S. King St. 521-8002 46-202 Kahuhipa St. 247-8941
4510 Salt Lake Blvd. 487-0031

LOAN SALE 18%



LIMITED TIME NEW SIGNATURE LOANS ONLY

SAVING RATE	5% APR	6% APR	7% APR	12.75% APR	13% APR
WITH \$5-\$499	WITH \$500-\$4999	WITH \$5000+	WITH TERM: 1 MONTH MIN. \$1000 MIN.		IRA

LOAN RATE	21% APR	18% APR	16.5% APR	15% APR
UP TO \$5000 SIGNATURE	USED AUTO	UP TO \$7500 HOME IMPROVEMENT	UP TO \$10,000 NEW AUTO	

Windward Community Federal Credit Union
KMCAS 401 O'Neal Street 254-3566 Membership Fee \$3
Kailua 35 Kalnehe Street 261-3442

SAFEWAY

Where Everything's Right

Including The Price

Sirloin Steaks

(Bone In) Canadian Grade A or Safeway Quality Beef



\$3.29
lb.

Whole Fryers

Frozen Patti Jean Government Inspected (Fresh Foster Farm Whole lb. 79c)



69¢
lb.

Pork Butts

Extra Lean Canadian Frozen (Spareribs Meaty Country Style Fresh Thawed lb. \$1.69)



\$1.17
lb.

Top Sirloin Steaks

Boneless Canadian Grade A or Safeway Quality Beef Your choice



\$4.29
lb.

Crossrib Roasts

Boneless Pot or Oven Roasts From Safeway Quality Beef or Canadian Grade A



\$2.98
lb.

Chuck Steaks

Blade or 7 Bone Cut From Canadian Grade A or Safeway Quality Beef



\$1.98
lb.

Pork Chops

Fresh Blade or Loin Ends

\$1.99
lb.

Pork Spareribs

Small Lean Canadian Porkers

\$2.09
lb.

Fresh Peaches

U.S. No. 1 Premium Quality From California



79¢
lb.

Cantaloupes

U.S. No. 1 Large Size



2.89¢
lbs. for

Fresh Corn

U.S. No. 1 Great For Barbecues



3 FOR \$1

Watermelons

U.S. No. 1 Red, Ripe Sweet and Juicy



27¢
lb.

Large Eggs

Lucerne Grade A Mainland Shelltreated



\$1.09
Dozen SAFEWAY Low Price

C & H Sugar

5 lb.



\$1.59
Limit 3 SUPER SPECIAL

Pepsi

Regular, Diet & Light, Mountain Dew



\$1.79
6/12 oz. Cans SUPER SPECIAL

Cottage Cheese

16 oz. Lucerne



99¢
SUPER SPECIAL

Numade Mayonnaise

Quart



\$1.49
SUPER SPECIAL

M.D. Toilet Tissue

4 Roll



99¢
SUPER SPECIAL

Libby's Corned Beef

12 oz.



\$1.39
SUPER SPECIAL

Jello Gelatin

3 oz.



4 FOR \$1
SUPER SPECIAL

YOUR SPECIAL STORE

Items and prices in this ad are effective June 5-June 12, 1982.
948 Ala Lihua St. Honolulu 88-1227 Kahuwaimo St. Aiea
1121 S. Beretang St. Honolulu 88-1227 Kahuwaimo St. Aiea
2855 E. Mauna Rd. Honolulu 48-085 Koa Highway, Kaneohe
1360 Pali Highway, Honolulu 75 Kaneohe Bay Drive, Kaneohe



SAFEWAY

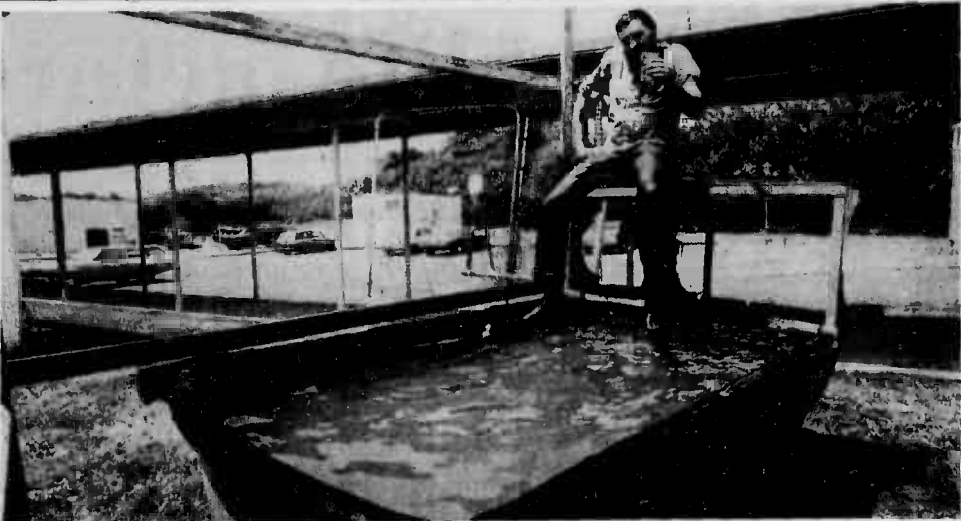
Good deeds done for Navy Relief



UP AND OVER — Corporal Jim Mann puts his all into the ball during Station Operations and Maintenance Squadron, Crash Fire and Rescue's volleyball triumph against Weather Service, also in SOMS, here. The charitable contest ended with CFR victorious in three of five games, but the Navy Relief Fund Drive was the real winner Friday. Navy Relief received \$25 from the losers. (Photo by Sgt Greg Berry)



ENJOY GIVING — Sergeant Wayne Flanders, Marine Air Traffic Control Squadron-18, Det. B, Marine Air Control Squadron-2 challenges Atari's "Space Invaders" game at the MACS-2 carnival for Navy Relief. Flanders maintained the high score at the carnival May 28. (Photo by Sgt Chris Taylor)



A SPLASH FOR NAVY RELIEF — Wade Richardson, a civilian employee, awaits being dunked at the Marine Air Control Squadron-2 carnival. The May 28 event was held to raise money for the Navy Relief Fund Drive. (Photo by Sgt Chris Taylor)

Free degree.
You can count on the Corps.
Stay Marine.

if your eyes need to be open

soothe them with **Lavoptik** eye wash
AT LONGS DRUG

"THE ORIGINAL"
PEEL-A-GRAM
THE ULTIMATE MESSENGER SERVICE WITH APPEAL

"WE REALLY PEEL FOR YOU"
Anytime • Anywhere
THE PERFECT GIFT . . .
for ALL OCCASIONS

- BIRTHDAYS • OFFICE PARTIES • ANNIVERSARIES •
- BACHELOR/BACHELORETTE PARTIES •
- CONVENTIONS • GET WELL • GET EVEN •
- ALOHA • OR CREATE YOUR OWN REASON!

"A TASTEFUL GIFT THEY'LL NEVER FORGET!"

our **MALE/FEMALE PROFESSIONAL DANCE MESSENGERS** are trained and groomed for your satisfaction! **"OUR COSTUMES ARE ORIGINAL!"**

THE SHOWS ARE FANTASTIC and are rated
"G" • "PG" • "R" • "X" • "XX" • "XXX"

239-5751 Father's Day Special, **\$10 OFF** ANY PEEL-A-GRAM

BURI AND RATTAN SALE

SAUCER CHAIR \$25.00 reg. 31.65
LOUNGE CHAIR \$65.00 reg. 77.17
ROUND TABLE \$25.00 reg. 32.58
PEACOCK CHAIR \$49.00 reg. 61.75
RATTAN LAMPS 20% OFF reg. 64.06 to 127.09

15% OFF our entire stock of **3-SEAT SOFAS**

MILITARY ID. REQ.
SALE NOW EXTENDED TO JUNE 15TH

HICKAM AFB Bldg. 1709 (rear of Toyland)
Ph. 422-1175
SCHOFIELD, Bldg. 874
Ph. 624-4116

BURI RATTAN HUT

This ad was not paid for or sponsored by AAFES

Cinema

	W	T	F	S	S	M	T
MCAS Theater	1	2	3	4	5	6	7
Camp Smith Theater	8	7	6	9	10	11	12

1. **THE GREAT ALLIGATOR** — Barbara Bach, Claudio Cassinelli, R, horror drama.
2. **BRUBAKER** — Robert Redford, Yaphet Kotto, R, drama.
3. **FOUR FRIENDS** — Craig Wasson, Judi Thelan, R, drama.
4. **TERROR TRAIN** — Jamie Lee Curtis, Ben Johnson, R, horror drama.
5. **THE BIG SHOW** — Gene Autry, Smiley Burnette, G, western.
6. **ARISTOCATS** — Phil Harris, Eva Gabor, G, musical drama.
7. **GHOST STORY** — Fred Astaire, Melvyn Douglas, R, horror drama.
8. **LOVING COUPLES** — Shirley MacLaine, James Coburn, PG, romantic comedy.
9. **TRIBUTE** — Jack Lemon, Robby Benson, PG, drama.
10. **LEAVE HER TO HEAVEN** — Gene Tierney, Cornel Wilde, PG, drama.
11. **SUPER FUZZ** — Ernest Borgnine, Terence Hill, PG, action comedy.
12. **RAGTIME** — James Cagney, Elizabeth McGovern, PG, drama.

PRIVATE COUNSELING
Individual, marriage, family, alcohol and drug counseling.

Richard W. Holmes, M.A.
Military and their dependents welcome.

CHAMPUS Certified For appointment Call 941-7812

DO NOT READ THIS!!

IF you already have a satisfying, lucrative business.
IF you already achieved your financial goals.
IF you have no ambition.

"Professional sales people are not born, they are trained."
Tom Hopkins the #1 sales trainer in the nation has developed a comprehensive training program titled **"How To Master The Art Of Selling Anything."**

Mooney Management has recently opened a training center in Honolulu featuring this most complete, professional **"How To"** sales training program ever produced.

My name is **Vivian Bertalan**. I am looking forward to assisting you **"Master The Art Of Selling Anything."**

For a **FREE** training introduction phone **Vivian Bertalan — 532-1030**

The Friendship Store
& The Marine Corps
Exchange present;

The 'China Pavilion'

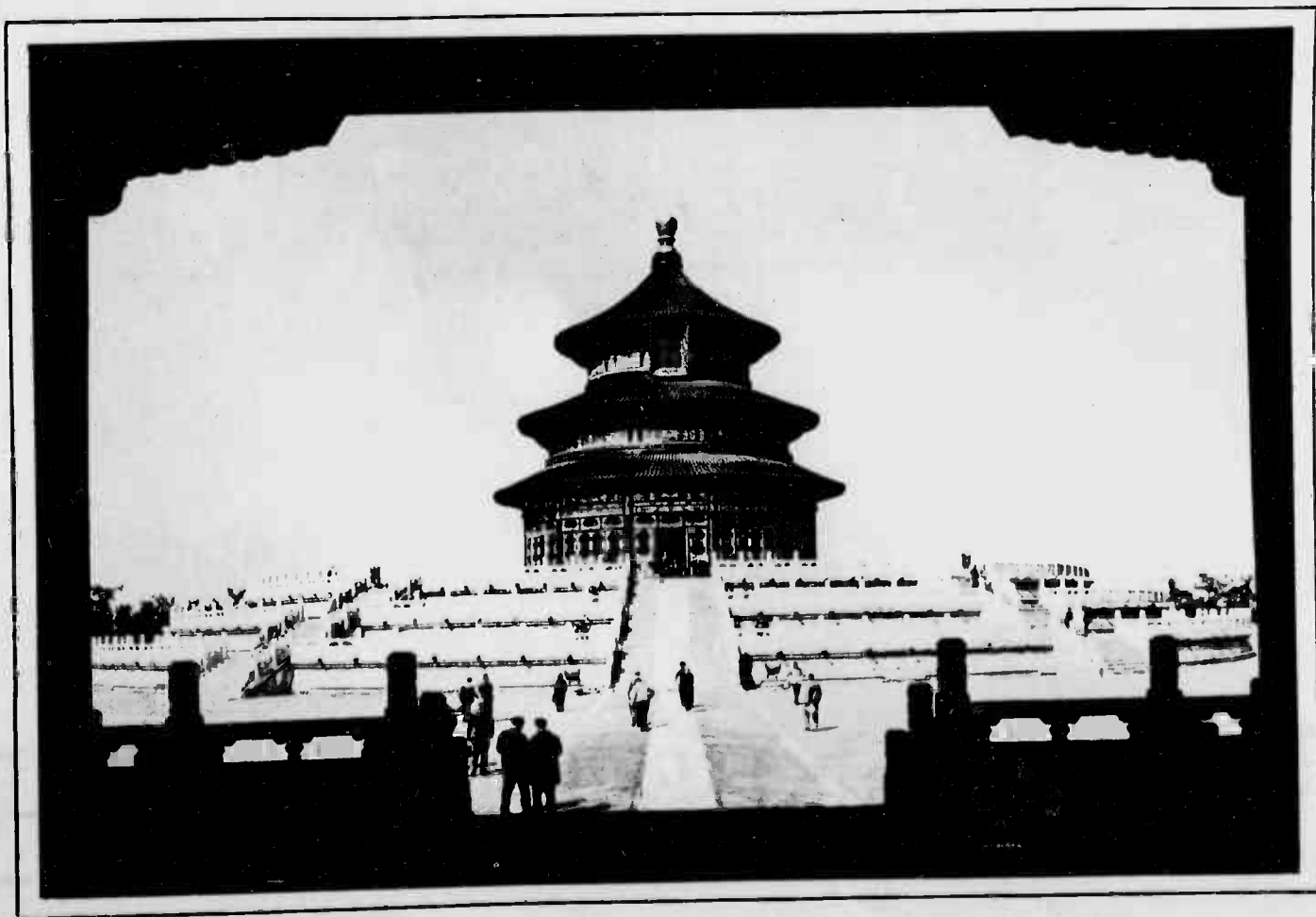
Artisans & Goods from China

Giftware, Jewelry, Table Linens, Apparel,
Rugs, & Furniture at Exchange Prices!

*CASH & CARRY, NO LAYAWAYS

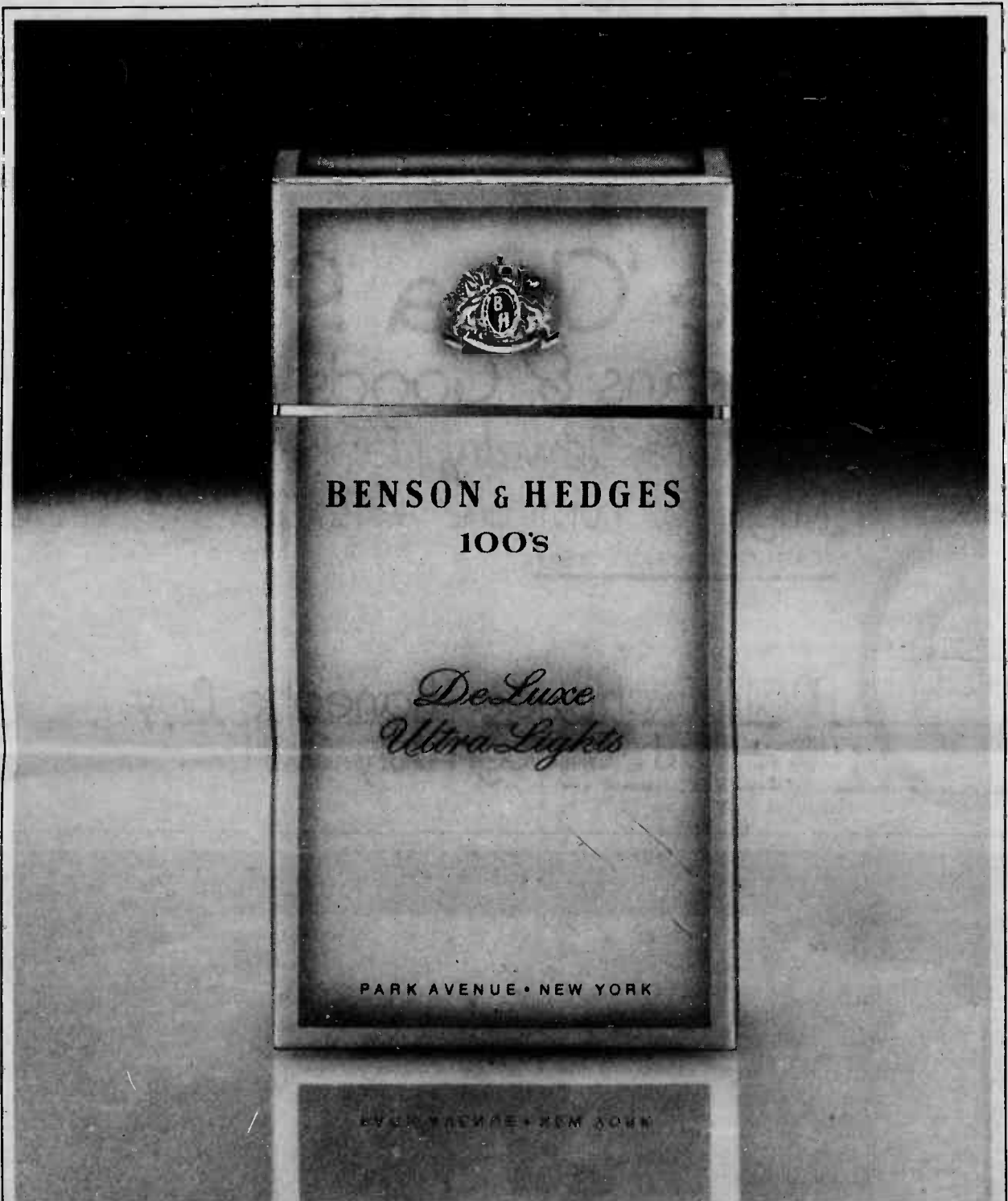


Main Exchange - Kaneohe Bay
June 15th through July 3rd!



CHINA

Introducing Deluxe Ultra Lights



Only 6 mg yet rich enough to be called deluxe.
Regular and Menthol.
Open a box today.

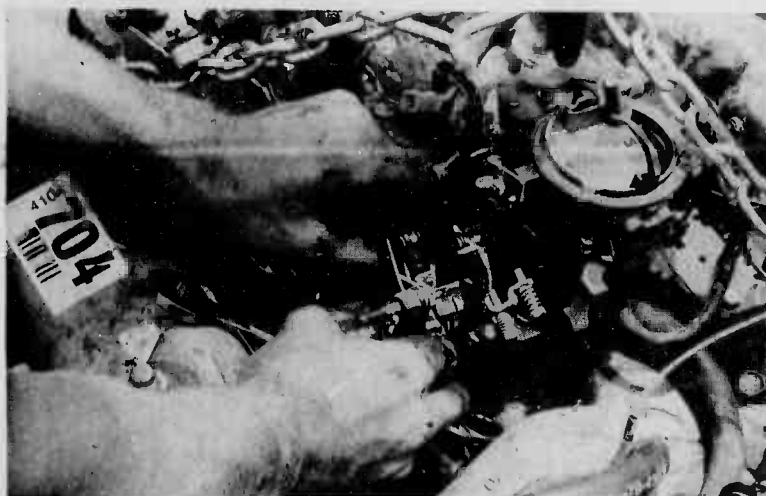
BENSON & HEDGES

Warning: The Surgeon General Has Determined
That Cigarette Smoking Is Dangerous to Your Health.

8 mg "tar," 0.6 mg nicotine av. per cigarette, by FTC method.



GETTING INTO IT — Lance Corporal Dave Heming, Motor Transport Company, Brigade Service Support Group, gets his hands greasy as he applies his automotive skills to a friend's car at the Auto Hobby Shop. (Photo by Sgt Chris Taylor)

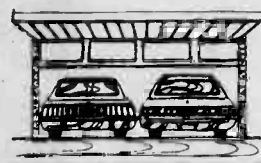
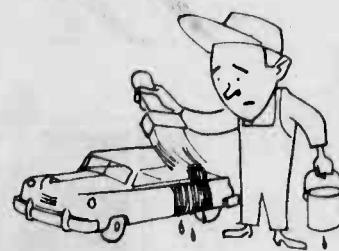


CHEAP FIX — Making simple adjustments to a carburetor can save on gas and money. This is one of the many car repairs motorists can do at the Auto Hobby Shop. (Photo by Sgt Chris Taylor)

"We Can't Afford It"



MECHANICAL FACE-LIFT — Sergeant Dennis Peterson, Motor Transport Company, Brigade Service Support Group, works on an engine while it's suspended from the engine hoist at the Auto Hobby Shop. (Photo by Sgt Chris Taylor)



Marine Auto Hobby Shop answers would-be-mechanics' cry for help

by Cpl Marie Woods

Leaving a car at the mercy of a repair shop, being without transportation and managing to afford the bill, are problems for many people with car trouble.

The Special Services Auto Hobby Shop is an inexpensive alternative.

Whether it's a paint job, repair work, or just remodeling, the Auto Hobby Shop offers the tools, space, and assistance to get the job done while saving money.

"MARINES, WHO HAVE the automotive skills or who want to develop them, will find the shop a good area to learn in," said Staff Sergeant Wayne Jackson, noncommissioned officer in charge. "We offer a variety of services that are inexpensive to use," he added.

Those services include a steam cleaner, \$7 per engine; a paint booth, \$4 an hour; and the No. 1 weapon used in the battle of rust, undercoating, that runs anywhere from \$25 to \$35 depending on the size of the car or truck. In addition, for use on shocks, a McPherson Strut Suspension tool has been ordered.

Also available are: sanders, \$1 an hour; chargers, \$2; grinders, \$1 an hour; drills, 25 cents an hour; torches,

\$2 an hour; and welders, \$2.

If knowing what part is needed or where it should go is a problem, the shop keeps a collection of Chilton auto manuals on hand for cars born from 1964 to 1981.

"The only problem we have is with abandoned cars," Jackson said. People will leave their cars at the shop and never return to claim them. "It costs us \$45 to have one vehicle towed," Jackson mentioned. Cars that need a lot of work can be stored at the shop for as little as 50 cents a day.

"DOING THE WORK on their cars can save people from paying high labor costs," Jackson said. "I hate seeing someone get ripped off."

Sergeant Robert Dunn, Headquarters Company, 3d Marines, discovered that the paint booth saved him money and gave him the satisfaction of doing the work himself. "NAPA (auto supply center) held a class here on painting a car. I went and that's what helped me understand what to do," said Dunn.

Having an average-size car painted can cost anywhere from \$316.80 to \$550. That's not including any bodywork or changing the color.

The materials needed to paint a car can cost \$6 for a quart of primer, and \$34 for a gallon of paint.

Buying these items and using the

paint booth at the Auto Hobby Shop can save the car owner a considerable amount of money that would otherwise be spent on labor.

Sgt Dennis Peterson, Brigade Service Support Group, found that using the Auto Hobby Shop's engine hoist gave him the opportunity to save time and money. Peterson could work on the engine himself and not pay a garage fee to have a mechanic do the same thing.

CAR PARTS ARE basically inexpensive items. Motofists who purchase a needed part and replace it themselves, can find that car repairs need not be a costly and drawn out process.

"The people who use the shop are mostly familiar faces," said Jackson. "But, we're here to assist anyone who uses the shop," he added.

Safety is a must for people who use the Auto Hobby Shop. Shirts and protective shoes are required when working there. "Too many people come here wearing shower shoes," said Jackson.

Also, for those car enthusiasts who enjoy a "cold one" while working, forget it. No alcoholic beverages are allowed.

The Auto Hobby Shop is open from 11 a.m. to 8 p.m., Wednesday through Friday, and from 9 a.m. to 5 p.m., Saturday and Sunday.

Woodworker

Marine whittles away furniture's inflated price

by Cpl Dawn Bowman

When you are married, 22 years old, a lance corporal living in a high cost area and watching the budget, furniture shopping is probably not high on the priority list.

It is a sink or swim situation and most people do a barely passable doggie-paddle.

SERGEANT PHIL Gould, Marine Air Traffic Control Squadron-18, Detachment B, Marine Air Control Squadron-2 has found a way to beat the waves of inflation. he builds his own furniture at a fraction of the price.

Gould said, "I tried working with wood when I was in junior high and I made a plaque with my family name on it. I think the only reason my parents kept it up on the wall was so my feelings wouldn't be hurt. When I came back from boot camp it was gone. I don't blame my parents for taking it down. I wouldn't hang it on my wall, that's for sure."

He didn't touch wood again until he had no choice. "My wife wanted a waterbed," said the 25-year-old radar repairman, "but I wasn't prepared to pay \$1,800 for something that would fall apart in a year."

That's when he came up with his build-it-yourself idea.

He pointed out, "People in furniture stores are always over-helpful. We went from store to store looking at the different types and asked questions. Then we drew up plans and built it in our living room."

SINCE THEN, GOULD has completed a dresser and a hutch and smaller items. However, because tools are too expensive, he decided to forsake his living room workshop for the Wood Hobby Shop courtesy of Uncle Sam.

"I've worked at quite a few of the military hobby shops here on Oahu," explained Gould. "If you can't find the tools you need in one, they're bound to be at another. The shop here on station is in the midst of ordering new parts and equipment. I honestly feel that when they finish getting everything refurbished, this shop will be one of the best on the island."

Gould normally uses the wood hobby shop here, but until it's refurbished, he uses the one at Hickam Air Force Base for more intricate work.

He has saved a picture from Popular Mechanics since 1979 — a majestic dining room table. Just by looking at the picture and using tools and advice provided by the hobby shop, his three-year-old dream is coming true.

The wood he has chosen is Pau Ferro, a Brazilian type

that sells for \$10 a board foot. Although he spent approximately \$500 for the amount he needs, the table, when completed, will be worth an estimated \$1,200.

IT'S NOT THAT HARD to build furniture," remarked Gould. "It's just a matter of patience."

Patience is something he needs a lot of too. As a radar repairman, when something doesn't work right, it could be days before the problem is located and fixed. As a wood worker, if the job is rushed, the whole project could be ruined.

Even with extreme care, a few mistakes or imperfections undoubtedly occur. But this doesn't discourage the 5-foot, 5-inch New Hampshire native. "It's the little flaws that give a piece character," he said. Tensely he added, "Besides, when someone notices a mistake, I just say, 'That one's my wife's.'"

Gould and his wife, Pam, a Navy photographer, do their projects together. "It gives us a chance to catch up on the day's events and it also keeps us feeling close," he said.

There is some confusion as to what the next project will be. "I'd like to start on a living room set or a four poster bed, but my wife wants a bread box," Gould remarked. "I might think of something less we want, but I have a feeling the bread box will win."



Sgt Phil and Pam Gould

"It's the little flaws that give a piece character . . . Besides, when someone notices a mistake, I just say, 'That one's my wife's.'"



BATTER UP! — Rudy Lucero, warehouse employee at the Commissary, swings hard during a softball game held at Risely Field. Soda, beer, and hot dogs were sold at the Friday game by Headquarters and Headquarters Squadron Supply 19-18 to raise money for the Navy Relief Fund Drive. The Commissary defeated H&HS, 19-18. (Photo by Cpl Terry Clark)



BUY 'EM AND EAT 'EM — Private First Class Curtis Burch, Headquarters and Headquarters Squadron Supply 19-18, serves a hot dog to Commander Harry Wareham, H&HS Supply Officer. Hot dogs, soda, and beer were sold at Friday's softball game to raise money for the Navy Relief Fund Drive. The game was held at Risely Field, where Commissary workers defeated H&HS Supply 19-18. (Photo by Cpl Terry Clark)

Commissary workers edge H&HS

Navy Relief emerges as winner

Despite the drizzling rain, air station Commissary workers defeated Headquarters and Headquarters Squadron Supply 19-18 in a softball game Friday at Risely Field.

The game was a fund-raiser for Navy Relief. H&HS Supply sold refreshments and hot dogs to spectators and players. A total of \$51.50 was collected.

H&HS jumped to a 9-2 lead at the top of the third inning. However, at the bottom of the third, the Commissary scored 9 runs, putting them in the lead 11-9.

H&HS gained the lead again (15-13) at the top of the fifth inning and continued to hold it by one or two points.

At the bottom of the seventh inning the Commissary caught up in a muddy fight to the finish and slid to a 19-18 victory.

WE BUY

GOLD · SILVER · PLATINUM
DIAMONDS · WATCHES
U.S. & FOREIGN COINS

Prestige

HONOLULU 746 KAPAHULU 735-2368
KANEHOE 46-215 KAHUHIKA 247-9477

Inquire on Delivery Service
FREE PERSONALIZED SERVICE

INDIVIDUAL OR GROUPS

- Outer-Island
- Las Vegas
- Disneyland
- East Coast
- Alaska/Canada
- Orient
- Europe

Open Mon.-Sun. (Alea)

BUDGET TRAVEL

845-9742 (Dillingham)
488-1627 (Alea)

Credit Cards Accepted
CALL US BEFORE U-BUY

**FINANCIAL AID
FOR HIGHER EDUCATION
IS
AVAILABLE**

But hard to find

Computerized service will
search for you

EDUCATIONAL FUND FINDERS
\$50.00 Refundable Fee
5 TO 25 SOURCES GUARANTEED

CALL OR WRITE
Dr. Jack F. Byrne
Educational Fund Finders
1221 Kapiolani, Suite 346
531-1433

GET WET!
WITH

SEA URCHIN SCUBA SHOPS

SATURDAY, JUNE 12TH
4th Annual Underwater
POGO STICK RACES
SHARK'S COVE
8:00 A.M. to 1:00 P.M.
COME JOIN US!!!

<p>Wahiawa 622-4632 10-6 8-8 Sat. Closed Wed. 8-1 Sun.</p>	<p>Aiea 467-9080 10-6 8-8 Sat. Closed Tues. 8-1 Sun.</p>	<p>Kaneohe 235-3677 8-6 7:30-8 Sat. Closed Wed. 7:30-1 Sun.</p>
--	--	---

For the Big Event

From nuptials on the beach, in the chapel, to scrumptious delights, we'll make your big event one you'll never forget.

Call Catering, 955-0555.
Events must have a military sponsor.

HALE KOA HOTEL

CHEERS!

The pleasure is back.



99% tar free.

1 MG TAR

Available in Regular and Menthol

BARCLAY

Regular Kings, 1 mg. "tar", 0.2 mg. nicotine av. per cigarette, FTC Report Dec. '81.
Menthol Kings, 1 mg. "tar", 0.2 mg. nicotine av. per cigarette by FTC method.

**Warning: The Surgeon General Has Determined
That Cigarette Smoking Is Dangerous to Your Health.**

Hawaii Marine varsity routs Camp Smith team

by Sgt Pepper Davis

FORT SHAFTER, Hawaii — The Hawaii Marine varsity softball team boosted its season record by two games, with a double-header victory here over Camp H.M. Smith June 2.

Returning from a tournament on Molokai the night before, in which the Hawaii Marines placed third, the varsity squad routed Camp Smith 16-10 in the first game, and shut them out 19-0 in the second. Those wins gave them sole possession of second place in their division with a standing of 18-10.

AS DEFENDING state champions, a title they have copped for the past two years, the Hawaii Marines are now in the rebuilding stages. Last season

they boasted a powerhouse club that ruled softball diamonds throughout the state. Under Master Gunnery Sergeant Dave Burnett's coaching, the squad was practically a household word in the softball community.

This year with only a handful of returnees and an abundance of new faces, Burnett is regrouping. "I've been juggling players in and out of the lineup this season, so we can see where our strengths and weaknesses are," he commented.

He said his team is lax on defense, but if the contest with Camp Smith was indicative of anything, it appeared as though their strengths were in clubbing the ball, as homer after homer sailed over the fence.

This was the third meeting between the two teams, and the Hawaii Marines went three-for-

three. Sergeant Guillermo "Panama" Foster belted a three-run homer to give the varsity squad an early 3-0 lead in the bottom of the first inning.

In the top of the second, Camp Smith rallied to rack up seven runs, and step in front 7-3, capitalizing on errors by the Kaneohe club.

BEHIND THE long-ball hitting of Sgt Scotty Nobles and Staff Sergeant Steve Schmidt, who smashed home runs, and Foster who connected with a grand slam, the bottom of the second was all K-Bay. It stayed that way for the next five innings and the Hawaii Marines clinched the first game. Final score: Hawaii Marines, 16, Camp Smith 10.

As the 19-0 score would indicate, game two was extremely one-sided — in K-Bay's favor. Six of their 19

runs were homeruns, but the others came just as easily. Burnett said he did not want to rub it in, but he was still experimenting and told the players to go for it. He added that after the second game, he discovered his starting formula.

Couch Burnett does not seem to be too concerned with the regular season. Sure, he wants to win, and the chances are excellent; however, the veteran coach has his sights set on the state tournament scheduled for July 4. After that, he knows that next year they will be in terrific form.

"The guys are playing better each time out, so by next year they should have more cohesiveness," he said. Gunnery Sergeant Jerry Morrison, assistant coach, put it more bluntly. He interjected, "Next season we'll be bad!"

Sportsnotes

The Hawaii All-Services Surfing Championships at Barbers Point attracted several Marines, but only one found his way to the top... and he dominated two divisions.

Sergeant Kelly Rhode, Camp Smith, rode the waves to first place finishes Sunday in the Masters and Longboard divisions. Meet Director Jean Espina wasn't surprised. "Kelly always wins," she said, adding that the leatherneck has taken first several times at the National All Services Surfing Championships at Camp Pendleton, Calif.

Rhode is also a member of the Hawaii All-Star Surfing Team, which took first in the nationals last year, and promises to do the same this year since the team has managed to stay intact.

The next Station Catfight is scheduled for Tuesday. Entry deadline is 4 p.m. today. Entry fee is \$6 plus cart and green fees. Entry forms are available at the Athletics Office and the Golf Course.

Allcomers track meets will be held at the University of Hawaii on Saturdays noon to 1:30 p.m. from June 19-July 24. The Hawaii Masters Track Club has meets on Sundays starting at 7:30 p.m. For more information contact Jan at Athletic Office 257-3108, 3520, 3258.

Intramural Tennis Tournaments have been postponed until July because no one showed for the Organizational meeting on May 26. Next meeting will be noon June 23 in the

Station Theater lobby. Special Services representatives and interested Marines please contact the Athletics Office or the program might be canceled due to lack of interest.

The 3rd Annual United Service

Organizations Golf Tournament will start with a 12:30 p.m. shotgun start at Hamala Bay Golf Course, Hickam Air Force Base June 17.

Entry fee is \$35 and is a donation to the USO. The entry fee includes the awards banquet to immediately follow the tournament.

For more information and entry forms contact the Athletics Office.

Localmotion

K-BAY OFFICERS' CLUB

TODAY — Lunch in the Pacific Room from 11 a.m. to 1 p.m. featuring special, hot carved sandwiches, soup and salads. Mongolian barbecue on the Lower Lanai.

THURSDAY — Lunch in the Pacific Room from 11 a.m. to 1 p.m. Beefsteak buffet from 6 to 8:30 p.m. features steamship round, seafood item, rice or potatoes, vegetable and salad bar.

FRIDAY — Lunch in the Pacific Room. Happy Hour in the Tapa Bar from 4:30 to 6:30 p.m. Mongolian barbecue will not be served. A smorgasbord with chicken, hotel round, mahi mahi, roast pork, rice or potatoes, vegetable and salad bar will be served instead. "Venus" plays in the Tapa Bar from 5 p.m. to 12:30 a.m.

SATURDAY — Beef and Crab Buffet from 6 to 8:30 p.m.

SUNDAY — Champagne brunch from 10 a.m. to 1 p.m. with a mini buffet and menu orders and all the juice and champagne you desire. Prime rib and shrimp buffet from 6 to 8:30 p.m.

MONDAY — Lunch in the Pacific Room from 11 a.m. to 1 p.m. Monday evening the club is closed.

TUESDAY — Lunch in the Pacific Room from 11 a.m. to 1 p.m. The bar opens from 4 to 10 p.m. Happy Hour from 4:30 to 6:30 p.m. Tuesday evening the dining room is closed.

K-BAY SNCO CLUB

TODAY — Lunch from 11 a.m. to 1 p.m. Family Night buffet from 5:30 to 8:30 p.m. "Oldies But Goodies" plays from 8 p.m. to midnight.

THURSDAY — Lunch from 11 a.m. to 1 p.m. Mongolian barbecue served from 5:30 to 8:30 p.m. "Spaceman Disco" from 8 p.m. to midnight.

FRIDAY — Lunch from 11 a.m. to 1 p.m. Candlelight Dining featuring peel and eat shrimp is served from 6 to 9 p.m. "Electric Rangers" plays from 9 p.m. to 1 a.m.

SATURDAY — Prime rib and crab served from 6 to 9 p.m. "Kiddie Disco" plays from 2 to 5 p.m.

SUNDAY — Buffet brunch served from 10 a.m. to 1 p.m. Cook our steak to your perfection over a charcoal grill from 4 to 7 p.m.

MONDAY — Lunch from 11 a.m. to 1 p.m. Happy Hour is from 5 to 6 p.m.

TUESDAY — Lunch from 11 a.m. to 1 p.m. Happy Hour is from 5 to 6 p.m. Early Bird buffet 5 to 7:30 p.m.

WINDWARD ENLISTED CLUB

TODAY — Lunch from 11 a.m. to 1 p.m. Dining Room opens from 5 to 9 p.m. Every Wednesday the Chef's Special includes a salad bar. Every Wednesday night D.J. plays rock and roll in the Moongate Lounge from 7:30 to 11:30 p.m.

THURSDAY — Lunch from 11 a.m. to 1 p.m. Dining Room opens from 5 to 9 p.m. with all the beef ribs you can eat. Thursday night is country and western night. This month "Electric Rangers" plays from 7:30 to 11:30 p.m.

FRIDAY — Lunch from 11 a.m. to 1 p.m. Dining Room opens from 5 to 9 p.m. with prime rib special, prime rib and king crab or just king crab special. "Sapphire" plays from 8:30 p.m. to 12:30 a.m.

SATURDAY — Dining Room opens from 5 to 9 p.m. with prime rib special, prime rib or king crab special or just king crab special. In the ballroom D.J. plays from 8:30 p.m. to 12:30 a.m.

SUNDAY — Club opens at 11 a.m. Breezy Inn opens from 2 p.m. to 8 p.m. with prime rib special, prime rib and king crab special or just king crab special. Guest D.J. from New York spins discs from 7:30 to 11:30 p.m. in the Moongate Lounge.

MONDAY — Lunch from 11 a.m. to 1 p.m. Dining Room opens from 5 to 9 p.m. with "Italiano Night" featuring all the spaghetti you can eat. Happy Hour from 5:30 to 7:30 p.m. with free popcorn.

TUESDAY — Lunch from 11 a.m. to 1 p.m. Dining Room opens from 5 to 9 p.m. with all you can eat smorgasbord every Tuesday night. In the Moongate Lounge D.J. plays rock and roll from 7:30 to 11:30 p.m.

GET OUT OF DEBT

through Chapter 13
A federal law which helps to pay off your debts without borrowing and in payments you can afford, stops creditor harassment and law suits, protects your job, co-signers and property. Information packet without obligation.

Please call:

HOWARD Y. TANAKA
Attorney versed in Chapter 13 filings
Suite 703, Ali Bishop Bldg
1136 Union Mall, Honolulu

Phone: 526-1544

We're seeking people

PEOPLE MEETING PEOPLE

P.O. Box 10558, Honolulu, HI 96816-0558

If you would like your ad printed, free of charge, send it to Kelli Lee. It will be printed as space permits. To answer ads, enclose \$5.00 with each letter you want forwarded (for three letters for \$12.00). Letters should be placed in separate unmarked STAMPED envelopes with the identification number clearly marked on the back of the envelope. Kelli Lee reserves the rights to edit or reject any copy.

LADIES

L272: I'm Japanese/Hawaiian 24 yrs old, 5'4", 120 lbs. I enjoy quiet romantic evenings & long talks with a very special person. I'm looking for a man who has good manners & grooming, a positive thinker, who enjoys life.

L273: Attractive Filipino 47, non-smoker, non drinker, seeks kind gent of any nationality who is financially & emotionally secure for friendship, possibly marriage.

L251: I love meeting people, traveling, quiet romantic evenings, long talks & walks, movies, & discos. I'm 24 yr old, 5'6", 120 lbs. dark brown hair & big brown eyes. I'm a student, beginning acrobatic/japanese, 5'4" tall, 120 lbs. dark brown hair & big brown eyes. I admit good manners & good grooming in a man.

L243: Thriving professional, would like to meet the man I wouldn't expect to meet like this. I'm svelte, dark hair, 5'6" tall, 120 lbs. a desirable 5' in my tennis. I look to mesh with a whole grown up with sensibilities intact, with brains, candor, tender heart. Looking, but no looking, & you just might answer this because the time is right.

L235: Caucasian 32, 5'6", 120 lbs. Enjoys swimming, jogging, reading, cooking, movies, animals, & houseplants. Non smoker. Seeks sincere, intelligent man with sense of humor.

GENTLEMEN

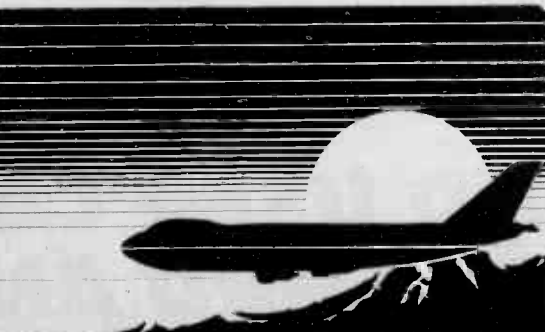
M200: Outgoing 27 yr old Oriental, 5'11", 175 lbs. would like to meet a woman who is friendly, honest & flexible. 24 yrs. or older. I enjoy traveling, dining out in nice restaurants, all sports, including body surfing.

M209: Everyone's looking for Greek Gods & Goddesses. What chance does a plain average guy have? I'm 5'4", 175 lbs., Caucasian divorced & not into jogging, tennis, polo, flying, or bars. I own my home, business, & auto (new & clean) & would like to meet a lady between 40 & 50... no glamour gal, just a nice plain lady who laughs & cries, blushes & giggles. I don't like dogma alone. If you're out there, please write.

M181: Part-time businessman, 32, 5'9", 190 lbs. desires to meet a sincere, mature, affectionate lady. Prefer a non-smoking, self-sufficient, sport-minded lady between 25-35. I enjoy dancing & quiet evenings at home.

M188: Writer, 38, 6'0", 180 lbs. Divorced, well-traveled, well-off. Would like to meet sincere, intelligent woman, any age or race. Object: Good friendship & more.

M211: 41 yr old Chinese/Russian professional, would like to meet someone to share an interest in music, dancing, sports, current events, politics and more.



TLA SPECIAL
\$3500 plus tax

OUR HOTEL
YOUR HOME BASE

Hotel Features Include

Payment Schedule To Suit Your Needs
Lei Maker's Garden Restaurant
Kalama Lounge w/live entertainment
Room Service
Free Color TV
Pool
Babysitting Referrals
Deluxe Air Conditioned Rooms
Rental Cars Available
3 Hotel Laundromats
Free 24 Hour Airport Shuttle Service
Located on Bus Line minutes away from
Military Installations, Major Attractions and
Walkiki.

ASK ABOUT OUR KIDS EAT FREE PROGRAM

For Reservations And Information Call

836-0661

Holiday Inn

3401 Nimitz Hwy, Honolulu, HI 96819

COME PARTY!



In A Secluded Country Atmosphere

Office Picnic • Business Meeting • Workshop Seminar
Mail and Farewell • Baby Luau • Promotion Party

Featuring a 24' Salon Bar

Place a business meeting, party, or picnic at TROPICAL RANCH. We have 17 acres at the foot of the Koolau mountains overlooking Mt. Diamond. You'll thoroughly enjoy the relaxed, secluded country atmosphere.

Tropical Ranch

836-0141

Ask for Valerie

Our 82 Calendar is rapidly filling up, so call now to reserve your party date.

PARTY-GRAM-EXOTICA

HAWAII'S MOST UNIQUE MESSENGER SERVICE

SENDER	LOCATION	DATE	TIME
???	You Name It!	That Special Occasion	Just in time to make your party!

FOR INFORMATION & RESERVATIONS CALL **638-9167**

TO: Your Victim!

Aloha, Have you been searching for the ultimate gift? Why not dazzle them with a gift they'll always remember?

PARTY-GRAM EXOTICA
Whatever the occasion, Birthday Party, Bachelor/Bachelorette Party, Get Well, or even "no reason", just tell us where and we'll be there to please! Our exotic messengers will dance their way into your hearts with a unique novelty act that will excite and delight everyone.

PARTY-GRAM EXOTICA
Features an array of characters from which to choose: Male & Female professional performers rated G, PG, R, X!

PARTY-GRAM EXOTICA
Will Sweep You Away... and with every performance, an "Exotica Lei"!

GIVE THEM A LEI, THE "PARTY-GRAM-EXOTICA" WAY — MAHALO NUI LOA

TWO WEEKS ONLY

25% OFF

OUR ENTIRE INVENTORY!

15 JUNE - 3 JULY

KANEOHE MARINE CORPS
MAIN EXCHANGE

Caribe
Diamonds

MAJOR CREDIT CARDS ACCEPTED

SORRY... NO SPECIAL ORDERS

THIS AD NOT PAID FOR BY MARINE EXCHANGE

*Celebrate
with Cutter's Ford!*

**Cutter Ford is proud to announce
the opening of
TWO NEW Cutter Dodge locations!**

**GRAND OPENING
SALE!**



CUTTER DODGE
Across from Pearl City Tavern



CUTTER DODGE
Airport

**EVERY NEW AND USED CAR AT
BOTH CUTTER FORD AND
CUTTER DODGE IS ON SALE!**

June 12th through June 20th
Watch for our commercials on
9 kgmbtv

Come celebrate with us!

Great Rebates! Special Warranties! Military Financing Our Specialty!

Salutes



arrivals to Hawaii. The information is compiled from Fleet Home Town News releases submitted to the Joint Public Affairs Office by unit information officers.

SOMS

Welcome Aboard:
Maj M.R. Massie
2nd Lt K.J. Nally
SSgt J.L. Adams
Sgt C.H. Campbell
Sgt M.L. Carpenter
Sgt J.E. Momant
Sgt V.C. Onorato
Sgt R.A. Parpa
Sgt L. Vega
Sgt B.T. Vincent
Cpl E.J. Allen
Cpl N. Burgosrivera
Cpl E.E. Campos
Cpl P.L. Dawkins
Cpl D.A. Hoover
LCpl K.R. Brown
LCpl R.D. Lupton
LCpl J.Q. Schneider
LCpl L.G. Schwalie
LCpl L. Villanueva
PFC C.J. Evans
Pvt R.K. Breland

Promotion:
LCpl C.J. Evans
LCpl R.D. Lupton
Meritorious Mast:
Sgt F.J. McGuire
Sgt C.M. Romero
Cpl C.B. McCreary
Cpl D.W. Staggs
LCpl K.L. Kosmala

Good Conduct Medal:
Cpl A.N. Brindley

Letter of Appreciation:

Cpl M.L. Peppers
Navy Commendation Medal:
1st Sgt T.W. Hertz

3d AAV Bn

Promotion:
Sgt P.A. Bennett
Cpl G.E. Tompkins
Good Conduct Medal:
Sgt W.R. Strivens

2/3

Promotion:
LCpl E.L. Browner
LCpl P.J. Gabriel
PFC D.M. Fanelli
PFC G.G. Harvey
PFC R.L. Humphries
PFC A.C. Lippman
Meritorious Mast:
Cpl C.J. Puffenberger
LCpl M.N. Alvin
LCpl K.P. Crisp

1/12

Welcome Aboard:
LCpl S.A. Kveritt
LCpl D.M. Sprigle
HM3 G.S. Arcibal
HM3 J.A. Widdler
Pvt R.D. Mason
Pvt J.M. Curry
Promotion:
Sgt R.D. Ronch
Cpl T.J. Callahan
Cpl A.L. Fajardo
Cpl J.L. McCarthy
Cpl G.B. Shepherd Jr.
LCpl T.A. Carpenter
LCpl T.D. Harris
LCpl B.A. Hust
LCpl R.F. Silva Jr.

Carrier of the Week



Scott Wright

Scott Wright is this week's Hawaii Marine "Carrier of the Week." He is an eighth grader at Kailua Intermediate and has been a SUN PRESS carrier for about 11 months. You may have seen Scott delivering his papers to the residents on Camplon Drive and Elrod Drive. When he isn't busy on his route he plays football and soccer and also likes to listen to music. Scott says he likes a lot about delivering the SUN PRESS. He's saving his earnings for a Walkman stereo and also to buy tapes. If Scott ever wins a trip he'd like to go to Australia and take his friend Melani.



Carrier of the Week receives a FREE Big Mac® from McDonald's.

McDONALD'S ASTOUNDING HAMBURGER STATISTICS
Enough shakes to wash down 18 billion hamburgers will fill every gas tank in the U.S. and that doesn't even include the countless gallons of soft drinks and coffee consumed at McDonald's.



Support

CRIME STOPPERS

If you know of, or see a crime call 955-6300 immediately. Crime Stoppers is a new system that keeps you anonymous and if your tip leads to an indictment or conviction you could earn up to \$1,000.

SPEAKER CLEARANCE

A major speaker manufacturer has asked us to liquidate all current stock of the below illustrated speakers. Brand names may not be mentioned in our ads as per manufacturer's request. You may call for more information.

<ul style="list-style-type: none"> 12" Woofer 5" Midrange 3" Tweeter 8 OHMS Impedance 15 Wood cabinet 25" high, 15" wide 65 Watts RMS Removable grill <p>Suggested Retail \$249 ea. LIQUIDATION PRICE \$79</p>	<ul style="list-style-type: none"> 12" Woofer 5 1/2" Midrange 3" Piezo Tweeter Ported 8 OHMS Impedance Adj. for midrange & high range 110 Watts RMS Removable grill <p>Suggested Retail \$359 ea. LIQUIDATION PRICE \$109</p>	<ul style="list-style-type: none"> 2-12" Woofers 5 1/2" Midrange 3 1/2" high force-super tweeter 3" Piezo Tweeter Adj. for highs 120 watts RMS Removable grill <p>Suggested Retail \$399 ea. LIQUIDATION PRICE \$139</p>
---	--	--

HURRY, SALE ENDS
SUN., 6/13/82 5 p.m. or while supply lasts

PACIFIC SURPLUS & DISTRIBUTORS
CALL NOW 262-8131

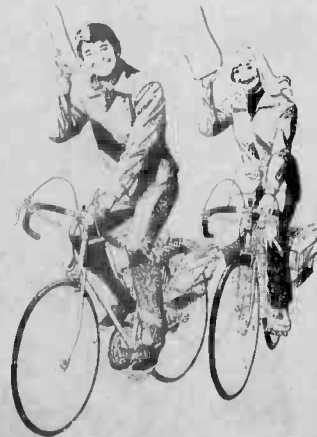
1247-F Pali Hwy. (1 block east of Castle Hospital in the 7-Eleven Complex in Kailua)

Monday through Saturday 9:30-6:00 pm
Sundays 11:00-5:00 pm
CLOSED TUESDAY

"You tell him his Overseas Deployment ribbon is in the wrong place!"

HAWAII MARINE CIRCULATION POLICY

Each week, the HAWAII MARINE is delivered to all homes and apartments. Your carrier delivers the HAWAII MARINE and will call on you every few weeks. If delivery service is satisfactory, and you enjoy the HAWAII MARINE, your voluntary payment will be a reward to our young businessman for a job well done. It's an incentive to work hard, and it's a way of letting our circulation department know which boys and girls are giving the best service. The young carrier pictured above is a local businessman... a HAWAII MARINE carrier. Most likely, this is his first business venture, and it is an important educational experience. As one of his customers, you can make his route a way to genuine personal achievement and growth. If you have any complaint about your HAWAII MARINE or the delivery service, please call 247-8755



CARRIER APPLICATION

The HAWAII MARINE has openings for carriers. Responsible HAWAII MARINE workers earn as much as \$10 per week for only a few hours work. If you want a business route of your own near your neighborhood, please mail in the application for information.

NAME _____
ADDRESS _____
PARENT'S NAME _____
TELEPHONE _____
AGE _____

Mail to: Circulation, Sun Press, 46-016 Alaloe St., Kaneohe, HI.

IF THE L.A. RAMS CAN DO IT... SO CAN YOU!

Come on Marines
GET TOUGH
with Sports Conditioning



IT'S COED
and its a workout
FIRST CLASS FREE
3 times a week - \$17 per month
Unlimited Classes - \$20 per month

FAMILY SERVICES GYM (next to the 7 Day Store)

Class Schedule
M., W., F. - 11:30am; M., Sat. - 8:30am
Tues., Thurs. - 6:30pm-7:30pm
For More Information Call
262-6880, 254-2876
257-3108

BODY DYNAMICS



kailua bike shop Summer Sale

June 11th-27th, 1982

FREE
HIC Visor with any purchase over \$20. (Supplies Limited)



Selected Sale Items
SURFBOARDS
\$10-\$20 OFF
BIKES
\$10-\$18 OFF
SURF & BIKE Accessories
10-50% OFF CLOTHING
10-50% OFF
HIC STICKERS
50% OFF

GIFT CERTIFICATE
PRESENTED TO: Sun Press Reader
FROM: Hawaiian Island Creations Kailua Bike Shop
This gift certificate, in the amount of \$2.00 is good toward any purchase of \$20.00 or more when presenting this certificate.
hawaiian island creations
June 9, 1982
Purchase Date (non-transferable) (non-refundable)
No sale
Offer expires June 27, 1982
Hawaiian Island Creations 354 Hahione Street Kailua, HI 96734 Telephone 262-7277

LUNCH TIME LUNACY

WE'RE GEARED TO SERVE THE LUNCH BUNCH!

30-MINUTE FREE DELIVERY

ARMADILLO PIZZA

2810 PAA ST. HONOLULU

836-1400

SUN. THRU THURS. 11AM-1AM
FRI. SAT. 11AM-2AM

LUNCHTIME LUNACY COUPON

\$200 OFF ANY 16" PIZZA

NAME _____
PHONE _____

VALID BETWEEN 11 AM and 4 PM ONLY

DRIVERS WANTED



'GGIN' OUT — Members of Headquarters and Maintenance Squadron-24 luau, some of the audience tried their luck with the ancient Hawaiian dance. More than 2,000 people were treated to a "big ol' all-you-can-eat" at the May 22.



OLD SWIVEL HIPS — Master Gunnery Sergeant Bob Morley dances the hula with a member of the Keolaulani Hula Olapa O' Laka. During the Headquarters and Maintenance Squadron-24 luau, some of the audience tried their luck with the ancient Hawaiian dance.



SCHOLARLY MAGICIAN — Professor Fun, of Channel 13's TV Pow, performs a magic trick with a youngster. The funny professor was one of many attractions at the Headquarters and Maintenance Squadron-24 luau at Bellows Air Force Station.

Marines throw a party

Unit says "thank you" with luau

Story and photos by Sgt Pepper Davis

BELLOWS AIR FORCE STATION, Hawaii — More than 2,000 people blanketed two adjacent parking lots here May 22 for a day-long luau when Headquarters and Maintenance Squadron-24 throws a luau the old-fashioned way with a capital "L."

Gunnery Sergeant Henry Laka, the coordinator, said he believed the luau was the largest party ever held at an air station unit.

Aside from having a good old-fashioned luau, the luau was held at the Bellows Air Force Station.

It was a "well done" to the junior Marines. The troops only had to show up. The officers and staff did all the work. The officers did all the work. The officers did all the work.

Two months of planning went into this luau, and it showed. The air was filled with the smell of barbecued chicken, hula hoops and hamburgers. Beverages flowed almost endlessly.

While lounging at tables under the stars, the crowds were treated to a variety of Hawaiian music by Hui Hula and a band from Kailua.

The Keolaulani Hula Olapa O' Laka Hula Dance Troupe captivated everyone with their sizzling routines. As a highlight, members of the audience were invited to try their hands — and hips — at the hula. Many of them discovered that the ancient dance required more than swivel joints.

After romping through a series of children's games, the youngsters gathered to watch Channel 13's Professor Fun go through his antics.

As the sun settled on the ocean, it quietly signaled the end of the festival. Folks bade farewell to their friends and headed home — satisfied.

Children at play
School's out
Drive
carefully

MILITARY ONLY!

TIRED OF WALKING? SAVE BIG \$\$\$ ON MOTORCYCLES!

Introducing **FEDERAL MOTORCYCLE SALES**

We Sell

- HONDA • BMW • YAMAHA
- SUZUKI • VESPA • KAWASAKI

Shop around...
Get your best price and CALL US

We're **FEDERAL MOTORCYCLE SALES, INC.**
Bougainville Road, Bldg #276,
Makai of Moanalua Center
Pearl Harbor

Call Us at 422-4131

MANOA CHIROPRACTIC CENTER
2nd Level, Market Pl.
Above Bank of Honolulu

- Workman's Comp./No Fault
- Athletic Injuries
- Individually Designed Exercise Programs

25% Military Discount

Specializing in Health Maintenance And Prevention of DIS-EASE

Dr. Stephen Tarek
988-6113
2851 E. Manoa Rd

KIKI

OFFICIAL HAWAII MUSIC REPORT June 6, 1982

LAST WEEK	THIS WEEK	TITLE	ARTIST
1	1	Ebony and Ivory	P. McCartney/S. Vonder
2	2	It's Gonna Take A Miracle	Deniece Williams
3	3	A Love So Right	Alis
4	4	Let It Whip	Dazz Band
5	5	Starmaker	The Klds From "Fae"
6	6	Rosanna	Toto
7	7	I've Never Been To Me	Charlene
8	8	Making Love	Roberta Flack
9	9	Don't You Want Me	The Human Leagu
10	10	Always On My Mind	Willie Nelson

The Official Hawaii Music Report is determined by weekly ballots you fill in, local record sales and requests and KIKI research.



When it comes to safety, why lay your life on the line?

At Hawaiian Electric, we believe there's more to safety than meets the eye. Fact is, many times tall trees can hide power lines. And, if you happen to touch these lines with metal or any other conductor of electricity, your fruit picking days could be over.

That's why we recommend that you use dry wooden or plastic poles when picking fruit. And, always be on the lookout for hidden power lines. As they say, it's better to be safe than sorry.

To find out more about electrical safety around your home, call us at 548-3511. And remember, we're doing everything in our power to see that you're not left up a tree.

Hawaiian Electric

Old Glory stands for freedom and liberty

by Cpl Mario Woods

The flag of the United States will celebrate its 205th birthday Monday.

It was June 14, 1777, that the Continental Congress passed a resolution adopting the 13 stars and stripes banner.

As the country grew and more states entered the Union, the number of stars and stripes also grew on Old Glory.

By 1794, the flag had 15 stars and 15 stripes. Realizing that the

flag would become awkward to handle with a stripe for each state, Captain Samuel Reid, U.S. Navy, suggested to Congress that the stripes remain 13 in number to represent the Thirteen Colonies, and that a star be added to the blue field for each new state entering the Union.

Congress took Capt. Reid's suggestion and a law was passed April 4, 1818 that required a star to be added for each new state on the 4th of July after its admission.

With the joining of Arizona and New Mexico in 1912, a 48-star flag was created. Alaska added a 49th star in 1959, and Hawaii paved the way for 50 stars in 1960.

Old Glory is flown 24 hours a day at four places in the United States, authorized by presidential proclamation. They are: Fort McHenry, Md.; Flag House Square, Baltimore; the Capitol and the Marine Corps Memorial at Arlington, Va.

The American flag has been looked upon

as a symbol of national unity. Marines have followed it into battle with pride, seeing it as a banner representing hope and freedom. But the most important symbol that the Star-Spangled Banner portrays is the one of life, liberty and the pursuit of happiness.

Daily respect for the flag is shown on military bases throughout the world. Flag Day is the one day set aside for all Americans to show their respect and honor the flag of freedom.

DON'T USE IT? SELL IT! IN THE CLASSIFIED 235-5881

20 LOST & FOUND

LOST Doberman Pinscher, female, Enchanted Lake/Mid Pac area. Sat. May 8, please call 261-2683.

LOST Gray Cockatoo Reward Call 422-2921 over.

FOUND 6/6/82, female part Shepherd, blonde hair, on Kaimali Dr. Ph. 261-9188.

25 PERSONALS

YOUNG European Gentleman seeks discreet older woman for day activities. Box 29124 Hon. HI 96820.

25 PERSONALS

HOUSE Cleaning \$65 for a house Call 889-5315 evenings.

NUDIST Park open house, Sat. and Sun. July 19th and 20th. Call Ms. Nude Hawaii 949-9230.

NUDIST Park free visit membership info Send \$1.00 mailing and handling to box 8417, Honolulu, 96815.

35 PROFESSIONAL SERVICES

SPOTLES - General House Cleaning/windows. Dependable/Honest. Res. 235-6704.

MOBILE RESUME SERVICES All Career Fields 9 am-5 pm 235-5112 595-4908

DIVORCE Serving Oahu Since 1977 \$100, 533-4533

Still Attorney Gene Bridges A Public Service Project

DESIGNER custom made all types of garments and alterations Ph. 262-4949

UPHOLSTERY work, free estimates, reasonable prices, Joe's Upholstery Ph. 262-9664

NARMADA Licensed Massage Therapist utilizing techniques from Chakra, polarity, deep muscle, lymphatic, and herbal remedies. Windward 235-0913, 261-4511, Honolulu 947-9822

CABINETS & Counters falling apart? need shelves or custom work? Free Estimates 395-8336 Creative Woodwork & Design

"Busybodies" - LET US DO IT! Cleaning, water plants, feed dogs, tutor, painting, wash windows, shopping, visit elderly, parties, etc. 537-4658, 261-4966

HEALING massage. You deserve to feel good. Relieve neck and back pain. Relaxation. Elizabeth Revely 262-9493

GORILLA Repair Service Professional painting Satisfaction guaranteed or you don't pay labor or price 247-1000

GUARANTEED AMWAY PRODUCTS for every need are just a phone call away. We deliver. Ph. Lelane 395-0065

WALLPAPER installer, expert, neat, reasonable Licensed. 247-1133

FELIPE Yard and Housecleaning. Call 261-5050 between 2:00 and 8:00 p.m.

PREGNANT AND WORRIED? WE'LL HELP FREE P.G. TEST MON, WED, FRI 9:00-3:00 487-7087, 538-3577 262-2171, 622-1532

RETIREE Dependable Yard Service Call 282-7588

PAINTING, carpentry, door, window repair, excellent work, low price 247-1745

45 SCHOOLS & TRAINING STAIN Glass class, Beginner and advanced. Call 487-1343

AUDIO UNLIMITED

6650 Hawaii Kai Dr.
395-3383

Just What Hawaii Was Listening For... An Alternative in finding Audio value. Offering a Professional, Personable approach to Your interest in listening to music.

CROWN-KLIPSCH-SAE-BOSTON-INFINITY-ADC-DBX-TDK-ADS-TEAC-THORENS-MESA-MAXELL-MICRO SEIKI-PLATTER MATTER-AIWA-MONSTER CABLE & INTERLINK-SCOTCH-MARIANI-DYNAVECTOR-GRACE-ASTATIC-NIKKO AUDIO-LORAN-OTARI-KOSS-and more.

Stop by Today and discover music reproduction at it's finest or CALL: 395-3383

Our Systems start as low as \$530 and INSTALLATION IS INCLUDED ANYWHERE IN HAWAII.

SPECIAL MILITARY DISCOUNTS

SALE HITACHI VT-9700A:

Now with 4 Video Heads for extraordinary picture quality at any speed

4 head system for amazing picture quality
Electronic digital counter display
Program search
Visual Search in two playback modes
Special viewing effects menu
Microcomputerized timer
Bi-program 3 track (max 1 price)
Wireless remote control

sale priced TOO LOW TO ADVERTISE! BONUS VALUE Purchase sale item and receive \$100.00 Entertainment Pack \$50.00 Free Membership \$50.00 Free Movie Rentals

VIDEO CENTER 2810 Pao Street Ph. 625-5050 415-G. Kuaia Rd. Ph. 261-2022

The Video Specialty Stores

HOLLYWOOD MOVIES

See us—enjoy full length, uncut, commercial-free movies with all the excitement, glamour, action and thrills intact.

For the Love of Pleasure Kate and the Indians Blondes Have More Fun China Sisters Exposed Champagne for Breakfast Baby Cakes

94-903 Farrington Hwy Ph. 671-6206

WAIPAHU STORE

94-903 Farrington Hwy Ph. 671-6206

KDEO COUNTRY RADIO

TOP 10 COUNTRY SONGS

June 6, 1982

Cast Week	This Week	Title	Artist
2	1	Finally	T.G. Sheppard
3	2	Tears Of The Lonely	Mickey Gilley
7	3	I Don't Know Where To Start	Eddie Rabbit
5	4	For All The Wrong Reasons	Bellamy Brothers
9	5	Listen To The Radio	Don Williams
1	6	Just To Satisfy You	Nelson & Jennings
1	7	You'll Be Back	Stallier Brothers
13	8	I Don't Think She's In	Charlie Pride
10	9	Love Any More	Tammy Wynette
15	10	Another Chance	Conway Twitty
		Slow Hand	

Hear the top country songs in the nation on the Weekly Country Music Countdown Every Sunday Morning at 9 A.M. on KDEO Country Radio - AM 94!

THIRD ANNUAL
REACH FOR THE STARS
CABARET SHOW
LOYAL GARNER
FRANK DELIMA
MICHAEL W. PERRY
SURPRISE GUEST STARS

FRIDAY, JUNE 25, 1982 - 7:30 PM
ALA MOANA AMERICANA HOTEL - HIBISCUS BALLROOM
A BENEFIT FOR
REACH
RECREATION FOR ADULTS AND CHILDREN WITH HANDICAPS
TICKET PRICE: \$12.50
(\$7.50 Tax Deductible - Price of ticket includes two cocktails, the show and validated parking.)

MAIL ORDER FORM
"REACH FOR THE STARS" - FRIDAY, June 25, 1982
NUMBER OF TICKETS _____ Amount Enclosed \$ _____
NAME _____
ADDRESS _____
CITY _____ ZIP CODE _____
Please make check or money order payable to: REACH
200 No. Vineyard Blvd.
Suite 605
Honolulu, Hawaii 96817
Please enclose a stamped, self-addressed envelope. And send to: Suite 605 Honolulu, Hawaii 96817

Now you can be a
Better Woodworker
with our unique system.



The Shopsmith MARK V
The tool to start with... the system you grow with.

See how the MARK V will give you the accuracy you need to make home repairs or remodel, build fine furniture and cabinets, create gifts for family and friends - and do it as well as the woodworking experts! You can even start your own money-making business. The Shopsmith MARK V is a versatile and complete home workshop that takes no more space than a bicycle. In this compact and economical

unit you get the five most needed workshop tools:
• 10" Table Saw
• 16 1/2" Vertical Drill Press
• Horizontal Boring Machine
• 34" Lathe
• 12" Disc Sander
Come and see it in use and find out how you can save during this limited-time factory direct sale

Stop by at our demonstration and learn about...
Limited-Time Summer Sale Savings

PLUS
FREE Bonus Merchandise
yours with the purchase of a MARK V!
FREE GIFT for attending!

Bring along the coupon below and claim your FREE Shopsmith Woodworking Gift after the demonstration... a handy miter finder/board feet calculator (it will help you determine the proper angles needed for professional-looking results and help eliminate wasted wood) PLUS a FREE one-year subscription to the national woodworking magazine, HANDS ON! Just stop by and see the most versatile wood-working tool in operation. There's no obligation.

Shopsmith Inc.
The Home Workshop Company
Shopsmith Inc. 1982

SEE LIVE DEMONSTRATIONS DAILY AT:
Fifth Annual Better Home Show
Neal Blaisdell Center
Honolulu
Wed., June 9 thru Sun., June 13
Daily 5-10,
Sat. 12-10,
Sun. 12-6

ATTEND THIS DEMONSTRATION AND RECEIVE YOUR FREE WOODWORKING GIFT!
Bring this coupon to the demonstration and we'll give you a FREE miter finder/board feet calculator and a one-year subscription to the national woodworking magazine, HANDS ON! Just stop by and see the most versatile wood-working tool in operation. There's no obligation.

Name _____
Address _____
City _____
State _____ Zip _____
Phone () _____
☐ I currently own a Shopsmith power woodworking tool.
NO PURCHASE NECESSARY. HZRU

Scene Stealer



Panasonic's VHS Home Video Cassette Systems make a career of saving TV's best for your own command performance. And the Omnimotion PV-1275 features a cast that calls for encores.

• 2-4-6 Hour Recording with Forward Search, which lets you view recorded material many times the speed of normal playback
• Frame Advance
• Soft-Touch Controls

Why leave TV's best moments to memory? Record them for your own collection and watch them whenever you want.

Panasonic

Available at your Military Exchange

Coupon
Why Wait For Problems?
Clean Your
Main Drain Line For
Only \$18.95
Offer Limited With This Coupon
Call 262-6338, Bob

Grand Opening
PEARL CITY HEALTH SPA
• Massage Expertise
• In Call Specialty
Pearl City Business Plaza
803 Kam Highway
455-2585
\$5 OFF WITH COUPON

HULA TAHITIAN MAORI
Puka'i-Kapuaokalani Hula Studio
Register now 3 years and above.
Also accepting boys 7 to 10 years.
Entertainment also available for your special parties.
Call Ellen Castillo
261-6514 Bus. 259-5606 Res.
39 Malunlu Avenue, Kailua.

Kamehameha HOLIDAY HOURS
The Sun Press offices will be closed June 11, 12 & 13 in observance of Kamehameha Day.
Retail & Classified Display Advertising Deadline: 4 P.M., Thursday, June 10 for June 16th Issue
Classified Line Ad Deadline: 4 P.M., Monday, June 14 for June 16 issue.



The point is . . .

Father's Day is just around the corner! If you need extra cash for that special gift or looking for a great buy, read and use the classifieds! We'll help you "get to the point."

Ph. 235-5881 or 622-3966

Reaching over 121,000 Oahu suburban/military households

45 SCHOOLS & TRAINING

PIANO & ORGAN LESSONS. Successful method for adults and teenagers. Studio in Kaneohe or downtown. A few spots open for home-lessons. Call John Schoulen at 247-6010.

STAPLES Swim School. 25 yrs in Kailua, children & adult classes. heated pool. 261-1982

WINDSURFING LESSONS. One on one instruction at Lanikai Beach. Ph. 261-1370

PIANO Lessons. classical, Popular or Chord method. Ph. 235-4432

PIANO & Accordion lessons. all ages & levels. Call 423-1252.

LEARN conversational Japanese. Call 247-6952

HAWAII BROADCASTING SCHOOL
Want to be a Disc Jockey, news or sportscaster? Hawaii Broadcasting School offers you the training you need. Call for free audition. 922-5153

FOLK Painting! Beginner & Intermediate classes. Phone 261-4383 Ask for Janet.

GENE'S MUSCLE MILL
Beginning & advanced body building. \$149 per year. Students \$59 per year. Open 6 a.m. to 10 p.m. 677-9372 or 677-3893

PHONICS. Spelling, Reading, All English skills. Children and adults. Spanish, French, high school level. 262-7242

50 BUSINESS OPPORTUNITIES
EARN extra money in your own business. Part or fulltime. 262-5555

ALOE VERA JUICE
for good health
COLLAGEN/ELASTIN & PLACENTAL
for beautiful skin
For more information
Call
235-8395
9 a.m.-4 p.m.
Independent
Representative For
McHoven Products

WANT to be your own BOSS? Full or part time. growing company. ENHANCE can help you build your CASTLE. For more information call 455-2204

CAREER opportunity — no experience necessary. Call 624-4977 for appointment

60 HELP WANTED MALE & FEMALE

INSTRUCTOR Life Guard wanted for preschool summer program. Call Teddy Bear Day Care. 235-1044.

MILITARY BROKE? EVEN ON PAY DAY
Earn extra money part time \$30 to 10 p.m. Mon. thru Fri. Workers needed in discount outlets specializing in stereo, television, microwave ovens & many more appliances. Also buying service for furniture, clothing, sporting goods, etc. following areas available. Honolulu, Pearl Harbor, Salt Lake, Wahiawa, Barber's Point & KMCAS.
\$6/hr. or incentive pay.
Call 833-4576

LOST your Tri-Chem Liquid Embroidery instructor? Service classes. New Baby Stuff. 247-1987, 624-2302, 487-1723, 254-3019, 836-8541. F/Part time. Openings

HIRING For Fall. experienced Pre-School teachers & assistant teachers. Call 254-4074 between 12-2 p.m. daily

60 HELP WANTED MALE & FEMALE

SUPERB NEW COSMETICS
Top commission, will train
Ph. 531-2623

SHUTTLE drivers needed. Living on or around Hickam AFB. Must be 25 years old, have valid drivers license, good driving record. Great opportunity for housewives. Ph. 423-1057 after 7 p.m.

JRD King Gong Talent show. Over \$850.00 in cash prizes. Singers, Dancers, Actors, Comics, everything and anything. Call 261-4146 for entry information. Call Now.

TEENS
Make \$\$\$ selling DODGE-TO-DOOR subscriptions NOW! Join HAWAII SPORTS KULEANA. EXCLUSIVE crew making BIG commission money this summer. Apply in person any day between 3 and 7 to:

HSK Merchandise Mart
Bldg. #439,
1100 Alakea Street

RNs LPNs AIDES & COMPANIONS
NEEDED FOR ALL SHIFTS
HOSPITAL STAFF RELIEF AND PRIVATE DUTY — TOP DAILY PAY — BENEFIT PACKAGE
License & recent experience required
WESTCLIFF NURSES REGISTRY
707 Kailua Rd., Suite 101 Kailua 262-2392

TELEPHONE sales. Pleasant atmosphere. Salary or commission. Days/eve. Pro's welcome. No exp. Call Tony 523-9577.

SUBSTITUTE teachers needed for 82-83 school year. Call School Personnel Services at 261-6992 and find out how we can put you to work.

FANTASTIC Opportunity. Will train to earn \$2000+ monthly part time. Serious inquires only. Call Mark 262-9665.

PART time Janitress needed. Kaneohe area. Call 247-2614.

MILITARY WIVES
We need part-time workers immediately to train for our newly established discount outlets. Now is the time to start making extra money for your summer trip home or to bring Grandma over for a Hawaiian vacation. 5:30 p.m.-10 p.m. \$8.00 per hour/incentive plan. For interview ask for Judy. Call 833-2228

GOOD JOBS ARE AVAILABLE!
Professional resumes, open doors. Military Specialists
PROFESSIONAL RESUME SERVICE
735 Bishop St., #238 — 521-7901
26 Years Experience

61 HELP WANTED SALES
SALES persons wanted, no experience necessary. Sell new exciting products. Will train. Set own hours. Commission. Possible \$500 and up weekly. Call 689-7944.

62 DOMESTIC HELP WANTED
BABYSITTER NEEDED FOR 7 1/2 yr. old girl, summertime, nr. Area Elem. 488-6217. oves.

FULL/PART TIME HELP
Armadillo Pizza is now accepting applications for full and part time help. Flexible hours; Wage, Commission, Tips, and Bonuses
Apply in person between 3-5 p.m. at 2810 Paa Street. See Tony. Immediate openings for our Moanalua and Wahiawa locations.

62 DOMESTIC HELP WANTED

NEED KMCAS person willing to pickup/drop-off elementary student (both parents military) at St. Anthony's summer school in Kailua. School starts 8:30 ends 11:30. Also must drop-off at Day Care Center. KMCAS. Will consider person willing to baby sit. Price negotiable. 254-1164 after 6 p.m.

MOTHER'S Helper. permanent position. 10-5, M-F. Positive attitude a must. Neat, responsible, hardworking. flexible. Prefer driver & non-smoker. Local references. Start \$300. 261-2058

WANTED housekeeper. 1 day a wk. Waiipahu/Savaii area, refs. pref. 871-0407.

NEED siller from Sunset to Laie. Call 638-8072

63 SITUATIONS WANTED
WILL Babysit in your home \$30 a week. 624-4176 7 a.m.-7 p.m. Schofield

BABYSITTING KMCAS needed yard, drop-ins welcome. 254-5856

WE WILL work for you! Housecleaning and/or typing service. Kailua area. Call 254-3059

HATE house work/no time? Will do thackam homes weekly. Have ref. 833-5907

QUAL experienced teacher will babysit in my home, near Windward Shopping Ctr. 247-1028

RELIABLE exper. person will do excellent housecleaning exel rates. 536-1136

BABY sitting — loving mom will take care of your child aboard MCAS Kailua. Will provide meals. supervised play, nap & love. 254-5744.

63 SITUATIONS WANTED

SECRETARY/Writer/Editor Educ. UCLA/LACC. resumes, manuscripts, informal invites, art, all comp/writing. srvc. my home or Flex. arrngmt. 521-3953, 822-9137 B.C.

MOVING! Saturday 9-6 94-081 Puuane Loop, Mililani. 2 Spanish sofas, lanai furn. & numerous other items.

9 to 4 SAT: Clothes, toys, plants, tool assembly of Naval officer's uniforms wait 34-36, 873 Auwahi St. Kailua

MULTI-Family garage sale: furniture, antiques; household items; baby furniture & clothing. 525 Ilmiano St. Kailua. 9 to 1, Sat. 6/12

QUALITY items. complete L. room, recliner, organ a/c, wall unit, desk, bookcases, washer, dryer, surfboard, sectional (recovered) misc. June 12-9 4 p.m. 804 Kaha Pl.

GARAGE Sale: Sat. June 12 8 to 3 p.m., twin mattress & box spring, lamps, baby items, etc. 46-328 Kam Hwy., Kaneohe 253-0302

GIANT Yard Sale. 3 families, furniture, clothes, etc. 8-4 Sat. only. 6/12, 140A N. Kalehuo Ave.

SAT., June 12, 9 to 2: Aquarium, twin bed, 45-199 Nankulu Dr., Kaneohe

TOOLS, elec. equip., display cases, misc. Sat., Sun. 6/12, 6/13, 320 Popu Dr., Hawaii Kai.

SUNDAY only, 6/13, 8:30-4: Lantak, 1038 Mokulus Dr., Kailua, bookshelves, desk, clothing, misc. household items.

SAT., June 12, 9 a.m.-5 p.m., 063 Lualaba St., Maunawili Park, Kailua. misc. household items, clothing.

MAINLAND move: Furniture and miscellaneous, Sat., 9 to 4, 1103 Ulupohi Pl., Kailua

68 GARAGE & LANAI SALES

GARAGE Sale: 9 to 2, Sat. June 12, 46-311 Kauhaua Place, Kaneohe

MOVING! Saturday 9-6 94-081 Puuane Loop, Mililani. 2 Spanish sofas, lanai furn. & numerous other items.

9 to 4 SAT: Clothes, toys, plants, tool assembly of Naval officer's uniforms wait 34-36, 873 Auwahi St. Kailua

MULTI-Family garage sale: furniture, antiques; household items; baby furniture & clothing. 525 Ilmiano St. Kailua. 9 to 1, Sat. 6/12

QUALITY items. complete L. room, recliner, organ a/c, wall unit, desk, bookcases, washer, dryer, surfboard, sectional (recovered) misc. June 12-9 4 p.m. 804 Kaha Pl.

GARAGE Sale: Sat. June 12 8 to 3 p.m., twin mattress & box spring, lamps, baby items, etc. 46-328 Kam Hwy., Kaneohe 253-0302

GIANT Yard Sale. 3 families, furniture, clothes, etc. 8-4 Sat. only. 6/12, 140A N. Kalehuo Ave.

SAT., June 12, 9 to 2: Aquarium, twin bed, 45-199 Nankulu Dr., Kaneohe

TOOLS, elec. equip., display cases, misc. Sat., Sun. 6/12, 6/13, 320 Popu Dr., Hawaii Kai.

SUNDAY only, 6/13, 8:30-4: Lantak, 1038 Mokulus Dr., Kailua, bookshelves, desk, clothing, misc. household items.

SAT., June 12, 9 a.m.-5 p.m., 063 Lualaba St., Maunawili Park, Kailua. misc. household items, clothing.

MAINLAND move: Furniture and miscellaneous, Sat., 9 to 4, 1103 Ulupohi Pl., Kailua

68 GARAGE & LANAI SALES

GARAGE/CRAFT Sale. 1092 Hele St. Kailua. Sat. 6/12, 10-2, Sun. 6/13, 11-3.

SAT. 6/12, 8 a.m. stereo, youth bed, cloth, misc. 7545 Manulolo, Kailua Valley.

MOVING! Sat. 9-3, June 12 and 13, plants, pocketbooks, furniture etc. 95-2052 Waiakama Place apt. B102

FURNITURE. garden tools, pool table, plants, misc. Sat. & Sun. 9-4 3 Ukupono St. Kailua

NEIGHBORHOOD Garage Sale - Sat. and Sun. 9-5, 94-1095 Anahulu Circle, Mililani

GARAGE Sale: No Junk. All kinds of sporting equip., Home & remodeling items, much more. 7:30 to 4 p.m. Sat. 6/12, 177 Kuukama St. Kailua

HUGE 3 Family Garage Sale: 1510 Kailua Way, Kailua. 8:30 to 2 p.m. Sat. 6/12

SALE & Craft Sale: Furniture, redwood chairs; wicker; lamps; stereo; clothes; all sizes; trash compactor \$60; materials; new craft items. misc. Sat. June 12, 7 to 2, 738 Kanaha St. Kailua

MOVING. orchids, plants, card table & chairs, pictures, twin spreads, quilt, etc. Sat. 6/12, 9 a.m.-3 p.m. 663 Keolu Dr. Kailua

MAKAKA Valley Towers, 1 bdrm., pool, ocean view, parking, color TV, incl. utils. 6 mo. lease. \$375. Ph. 696-2895

68 GARAGE & LANAI SALES

67 KR7 COUGAR. \$300 offer. engine good. A/c. size washer. \$30; weight & bench set, \$100. 78 Kawasaki 250, on-off road motorcycle, \$450 & other items. Ph. 262-4159.

73 APTS. FURNISHED
MAKAKA VALLEY PLANTATIONS, OCEAN VIEW from this beautiful large airy 2 bdrm. apt. on the top floor w/rattan furn. & tropical decor. Wall to wall carpet, drapes, dishes, etc. All amenities incl. swimming pools, whirlpools, saunas, tennis courts, Bar-B-Q areas. 24-hr. security guards. Military welcome. Just \$395 per mo. on a 6 mo. lease. Call 525-7443 8:30-5:00 p.m. weekdays. 946-8638 eves. for appl. to see.

LANIKAI: Studio, block to beach, lease, util. incl. Call after 262-5528

PEARL City. 3 bdrm. 1 1/2 bath. furn. \$600 mo. Ph. 689-8555

MAKAKA Valley Towers, 1 bdrm., pool, ocean view, parking, color TV, incl. utils. 6 mo. lease. \$375. Ph. 696-2895

75 APTS. PARTLY FURN.

WAIKIKI: 1 bdrm., upgrade, pool, security, view, utils. incl. avail. 7/1 \$500 nr. bus. Call 955-6745

KAILUA: Studio, quiet tenants, no pets, apt bldg \$325. 262-6462

PUNALUU: Beach front studio, pool, parking, utils. \$300 mo. Lease, Peggy 254-3994 or 261-5807

KANEKOE: 1 and 2 bdrms., \$325/\$375. Call 247-0500, 8-4 p.m. only.

78 RENTALS TO SHARE
MAKAKILO Townhouse, own room, \$225 plus utilities. Ph. 672-9328 evenings.

KANEKOE: Room, private entrance, ocean view \$200, quiet, clean man. 239-7336

NORTH SHORE: Rm. in new 3 bdrm./1 1/2 bath, deck & rug, walk to beach. 638-7288

MOANALUA VALLEY: Rm. in 4 bdrm. home, male/female, \$185 utils. incl. 877-414, 8-4

78 RENTALS TO SHARE

ROOM For rent, \$280 incl. pool, phone, cable, utils. on room/share house. 1 bd tropical estate, private w/convenience, Kaneohe Bldg. 247-5131

KAILUA near beach, friendly atmosphere, mature adult \$275 incl. utils. Avail. July 1, 262-9457

KANEKOE: room for rent \$190 mo., own bathroom, share kitchen, female preferred. Must like children. Ask for Patricia. 247-2495 or 237-8567

KAILUA - 2 roommates to share house, close to beach, shopping and bus. Responsible, \$230 + util/dep. Avail. 7/1 262-8329 after 6.

KANEKOE: Responsible woman/same. 2 bdrm. townhouse. View, pool, tennis \$270 plus utils. Ph. 247-3109

OWN Room, bath, entrance, Kailua home with pool. \$325 includes utils. 239-9268 or 262-5538 Lease/Dep.

KANEKOE, executive to share warm, cheerful home, \$275 plus electricity, non-smoker. Rhonda 524-7400, 955-3484

Kamehameha Holiday SPECIAL

Mention "Holiday Special" when you call and place your classified want ad before 4 P.M. Thursday, June 10 and you'll receive one

Free AD!

The private party ad you place for June 16 will run FREE on June 23.

LEGAL NOTICE

NOTICE

DRAFT SECOND SUPPLEMENT ENVIRONMENTAL IMPACT/40 STATEMENT

NOTICE IS HEREBY given that the Draft Second Supplement Environmental Impact/40 Statement for the proposed Interstate Route H-3 project between the Haleiwa Interchange and the Halekua Interchange is being published. The statement has been prepared pursuant to the U.S. District Court Judgment and contains new and significant information on the proposed project and the Draft Second Supplement EIS/40 Statement.

The formal public and agency review period for the Draft Second Supplement EIS/40 Statement has begun, and will continue through July 28, 1982. Written comments on the project or on the Draft Second Supplement EIS/40 Statement will be accepted only until July 28, 1982. If you wish to comment, please mail or deliver any comments you may have — together with a request if you would like to receive a copy of the Final Supplemental EIS/40 Statement — to the following address:

Mr. H. Kusumoto
Division Administrator
Federal Highway Administration
U.S. Department of Transportation
P.O. Box 50206
Honolulu, Hawaii 96850

All written comments should be legible and include your name (individual and/or organization) and address.
The Draft Second Supplement EIS/40 Statement is available at the following locations for your review:

U.S. Department of Transportation
Federal Highway Administration
Hawaii Division
Room 4119
Prison J.K. Kahin Building (New Federal Building)
300 Ala Moana Boulevard
Honolulu, Hawaii

State of Hawaii
Hawaii State Library (Main Branch)
Reference Desk
178 South King Street
Honolulu, Hawaii 96813

State of Hawaii
Department of Transportation
Highways Division
800 Punchbowl Street, 4th Floor
Honolulu, Hawaii 96813

State of Hawaii
Office of Environmental Quality Control
500 Haleakala Street
Room 301
Honolulu, Hawaii 96813

State Clearinghouse
Department of Planning and Economic Development
Kamamala Building
1010 Richard Street
Honolulu, Hawaii

Department of General Planning
Arenwile Clearinghouse
600 N. King Street
Honolulu, Hawaii

Other State Public Libraries (At Reference Desk)
Ala Library
Kailua Library
Kaneohe Regional Library
Pearl City Regional Library

Informational Meetings

NOTICE IS HEREBY given that informational meetings will be held on the proposed project and the Draft Second Supplement EIS/40 Statement. Copies of the Draft Second Supplement EIS/40 Statement will also be available for public review at these informational meetings and State Department of Transportation staff will be available to discuss and answer questions on the project and the Draft Second Supplement EIS/40 Statement from 5:00 p.m. to 9:00 p.m. at the following locations:

June 22, 1982
J.H. Castle High School Cafeteria
45-388 Kaneohe Bay Drive
Kaneohe, Oahu

June 23, 1982
Hartford High School Cafeteria
1301 Salt Lake Boulevard
Honolulu, Hawaii

Location/Design Public Hearings

LASTLY, NOTICE IS HEREBY given that combined location/design hearings will be held for the purpose of receiving testimony on the proposed project and the Draft Second Supplement Environmental Impact/40 Statement for the project. Maps, drawings, and other pertinent information as well as written views received during prior coordination are published in the Draft Second Supplement EIS/40 Statement. The availability of this information for public inspection and copying was previously described.

All public hearings will start at 7:00 p.m. and the dates and locations of the hearings are as follows:

July 6, 1982
J.H. Castle High School Cafeteria
45-388 Kaneohe Bay Drive
Kaneohe, Oahu

July 7, 1982
Hartford High School Cafeteria
1301 Salt Lake Boulevard
Honolulu, Oahu

Tentative schedule for right-of-way acquisition construction, with relocation assistance programs will be discussed.

All those wishing to testify at the public hearings will be asked to fill out a speaker information card. Testimony will be received in the order that cards are received. In order to give everyone wishing to testify an opportunity to testify, speakers will be limited to 5 minutes the first time around. After that, speakers have testified once, persons wishing additional time may have an additional 5 minutes. Verbatim written transcripts of the oral proceedings at each public hearing will be prepared.

All interested persons desiring further information or wishing to comment on the proposed project or the Draft Second Supplement Environmental Impact/40 Statement are invited to attend.

Parties unable or desiring not to appear at the public hearing are urged to file signed statements presenting their views on the subject. Such statements may be submitted by July 28, 1982 and should be addressed to: Director, Department of Transportation, 800 Punchbowl Street, Honolulu, Hawaii 96813.

Your interest and assistance in this review is greatly appreciated
HYEKICHI HIGASHIONNA
Director of Transportation

Advised: Honolulu Star-Bulletin
June 4, 1982
Honolulu Advertiser
June 4, 1982
Sun Press
June 9, 1982



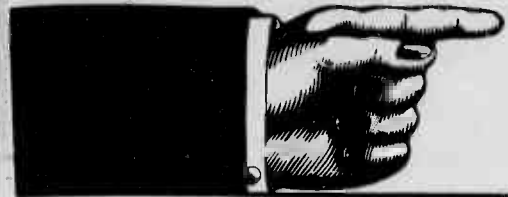
It Only Takes A Few Minutes To Place Your CLASSIFIED ADS

Simply write your ad on the handy order blank describing each item you want to sell and be sure to give the price you want for it. List your phone number and the hours to call. Be sure to print, using a pencil, ballpoint pen or typewriter. Your ad will reach over 109,680 suburban homes: on Oahu via the SUN PRESS, Waipahu Sun News, Hawaii Navy News, Hawaiian Falcon and Hawaii Marine.

Deadline: Monday 4 P.M. for following Wednesday edition.
★Deadline: Monday 11 A.M. for following Wednesday edition.

Name _____
Address _____
City _____ Zip _____
Phone Number _____
Classification Number _____

First Line	2	3	4	5	6	7	8	9	10	11	12	13	14	15	16	17	18	19	20	21	22	23	24	25	26	27	28	29	3
------------	---	---	---	---	---	---	---	---	----	----	----	----	----	----	----	----	----	----	----	----	----	----	----	----	----	----	----	----	---



The point is . . .

Father's Day is just around the corner! If you need extra cash for that special gift or looking for a great buy, read and use the classifieds! We'll help you "get to the point."

Ph. 235-5881 or 622-3966

Reaching over 121,000 Oahu suburban/military households

• 78. RENTALS TO SHARE

KAILUA: Couple/single, rm. in 2 bdrm./2 bath apt. Ph. M. Roberts 247-5333/261-2205 eves.

KANEONE: n/a, working, resp. clean to share 3 room w/1 person, own bath, washer/dryer, \$225 + utils. 247-2592

SHARE a townhouse in Kailua off Keolu Dr., easy access to town \$250 including utilities, no children, no pets. Call 254-1107 after 5 p.m.

TWO Rooms, \$150, \$225 + util. available in luxury townhouse. Own bath, sauna, pool, jacuzzi. Professionals. Larger room has adjoining space for den/dorm, etc. Child O.K. 247-3779.

• 82. HOUSES UNFURN.

LANIKAI Beach studio unfurnished, \$380 per mo. Pets okay, excl. wind-dancing. Call 261-9495

POKAI Bay Estates, 3 bdrm., 2 bath large lot, long lease \$600 mo. \$235-8449 after 5 or 1v. msg.

• 83. HOUSES PARTLY FURNISHED

KAILUA 2 bdrm. cottage, near beach, \$450 + elec. 261-3934 after 7 p.m. or weekends.

MILILANI, well maintained, 3 bdrm., 2 bath, w/appliances, large carport & back yard. \$650. Ph. 623-2265.

FOSTER Village: 3 bdrm., 2 bath, large liv. rm., family rm., big backyard \$650. Call 422-9719

KAILUA, Maunawili, 3 bdrm., 3 bath duplex, avail. 8/30. \$400, appliances, carpet, water, yard work incl. no pets or water beds, rfs, req. \$625. Ph. 261-4374

KANEONE/Kahaluu: \$550, 3 bdrm., 2 bath, pets, kids, view. Call 395-1567

KAHALUU: 3 bdrm., 2 bath, 4 bdrm., boat ramp, ideal lot, 3-4 or more military to share. Nr. KMCAS \$1,000 mo. Ph. 254-5441

KAILUA: Beach studio cottage, all utilities, singles only, must be able to help with pet care \$275 per mo. Call 261-1112 aves.

KAHALUU - Newer 3 bdrm. rustic, secluded cedar pole house. Mountain & ocean views. Washer, dryer, refrigerator included. Kids OK but no pets. Avail. 15 June \$750. 239-5406

KAILUA, July 1-31 only, nice 3 bdrm., 2 bath, big pool, large priv. yard, \$800. Ph. 261-8537

WAHIAWA Heights, furn. 1 bdrm. elderly preferred. \$250. Ph. 622-2292

ALLI Shores Kaneohe 3 bdrm., 2 bath, no pets. Call 235-4806

• 83. HOUSES PARTLY FURNISHED

PEARL CITY 3 bdrm. attached unit, no pets, \$550 + utils. Ph. 455-8017

FOR RENT 4 bdrm., 2 bath, formal dining, 2 car gar., pool, tennis courts, Hukilau area, call 254-3786.

MILILANI: 4 bdrm., 2 bath, 2 car garage, big yard, partly furn. w/frig., washer/dryer, disposal \$500/mo. no pets, 1 yr. lease, 94-277 Kupuia Pl., Call 239-6519 or 623-2319.

• 84. HOUSESITTING

ATTENTIVE quiet woman to give excel. care to house & yard. Non smoker. Ph. 373-1870

• 85. TOWNHOUSES PARTLY FURNISHED

KAME Kai: 2 bdrm., 1 bath \$365 plus utilities. Call 955-7838

FOR rent Pearl Regency, across from Pearlridge, 1 bdrm. condominium, partly furnished. Call 239-6287 after 5:30 p.m. for more information.

• 86. TOWNHOUSES FURN.

CLUBVIEW Garden: 3 bdrm., 2 bath, split level, pool, \$595. Call 261-2165.

• 87. TOWNHOUSES UNFURN.

YACHT Club Terrace, top unit w/bay view, covered lanai, 3 bdrm., 2 bath \$725 mo. 262-9292 11:30 a.m. to 5 p.m.

• 88. ROOMS FOR RENT

KAILUA: share 3 bdrm. home furn., rm. \$225 incl. utils. eves. 262-8561

WAHIAWA Heights, large room, bath, quiet residential. Own entrance, \$175 incl. utils. Ph. 621-0370 12-5 p.m.

KAILUA, 2 large rooms for rent, \$200 ea. 262-4531 after 5 p.m.

KAILUA: Single quiet, mature working person, refrig., hot plate, share bath, utils. incl. rent \$200, deposit \$100. 261-1478

ROOM for rent with private entrance \$150 plus util. Call after 5 235-1159.

ROOM with bath, refrigerator, private entrance for quiet, clean, mature, responsible non-smoking. 261-6296

KEOLU Hills, furn. room avail. for approx. 2 mos. start 6/15-20. \$225/mo. incl. utils. 261-5259

KANEONE, small studio view room w/priv. bath & ent. Refs. Pool, single only, \$195 + deposit. 247-1141.

KAILUA 2 rooms for rent \$175 and \$185, working man preferred. Military welcome. Ph. 262-5634.

• 93. VACATION RENTALS

KUILIMA: 1 bdrm., fully furnished apt., no pets. Call 239-8539

BEACHFRONT Condo., near Crouching Lion, Week, month, pool. Ph. 235-6196

KONA on ocean, 2 bdrm., 2 bath condo. Real luxury, up to 6. No pets, \$220/wk., \$800/mo. Call 1-324-1342

BEACH House Kaaawa, 3 bdrm., \$300 per week. Call Lyman 281-4332

MOLOKAI Wave Crest, sleeps 4, beach, pool, \$30 per day. \$190 per week. Ph. 395-6085

KAAWA: 3 bdrm. house, across sandy beach, Day, Week, Month. Call 235-8540. 237-8895

KUILIMA: 1 bdrm., apt., sleeps 4, amenities. Daily/wkly/mo. Call 235-1481

KAILUA Beachside cottage for 2 on private road \$225 wk. 261-4343

• 98. RENTALS WANTED

A QUIET, clean responsible, senior couple, want 2-bdrm. cottage or share larger home in Kailua/Lanikai. Consider any arrangement to reduce rent. 262-5592

• 98. RENTALS WANTED

MATURE lady seeks two bedroom apt., section 8, Wahiawa/Mililani area. 624-2253

KAILUA Rental/Office, 340 square feet - 2000 square feet, from 576. First Stop Realty 536-1002

OFFICE, 216 square feet-700 square feet. Reasonable. Call Phil 533-7468.

WAREHOUSE/Office/Showroom, 2700 square feet. Call Phil 533-7468.

KAILUA Shop space 1600 sq. ft. with power and parking. First Stop Realty, Ph. 536-1002

BOY SCOUTS OF AMERICA - Aloha Council, boats for sale, 18' Glastron-Molinar outboard race boat. Docking part, removed. Good ski boat conversion \$250/off. 17' Schultz outboard raceboat, similar to above, but in better cond. \$500/off. trailer avail. \$150, requires modifications. 15' Snipe sailboat, fiberglass over wood, old, but in good cond. excl. for beginner \$550/off. trailer incl. Ph. Wes Hau 595-6366 8:30-4, M-F.

• 114 REAL ESTATE FOR SALE

WAIPAHU, 3-bdrm., 1 bath house, \$70,000 or \$10,000 down a/s 55 year lease. MLS 6730. Glen Fonillas (RA) 456-1346. Tanaga Realty 488-7769

KAILUA Gardens - Poinciana Manor, 2 bdrm., 2 bath condo, furnished, near shopping cirs. & schools. \$89,500. For Sale by Owner. Call after 6:30 p.m., 261-0489

HAUKU Hale apt. C-201, 46-283 Kahupia St., 3 bdrm., 2 bath, parking, pool, sauna, close to schools, shopping, busline. By owner \$82,000. Wes 623-4337 Barrett 941-3630

DESPERATE SELLER! Sacrifice on up, added 2 bdrm., townhome in prestigious Puu Alii. Beautiful view of ocean & hills. Asking \$119,500/off. Super terms possible. Gene Yoshinaga (R) 235-4446, 247-6681. Mike McCormack Realtors

OWNER DESPERATE, must sell, Kailua home, pool, jacuzzi, buy w/low down payment. Call Judy Anderson (R) 247-5829, Mike McCormack Realtors

• 114 REAL ESTATE FOR SALE

HOUSE for sale, 3 bdrm., 1 1/2 bath, new \$43,000/off. You move, 239-6009 after 5.

MILILANI: Motivated seller says bring us an offer. We need to sell this month 3 bdrm., 2 1/2 bath townhouse. Only \$108,000. Assume \$47,500 VA at 8 1/2% and let's talk about the balance.

No money down! A give away 2 bdrm. condo. Assume \$80,500 VA and pay escrow costs.

FANTASTICALLY upgraded 2 bdrm. 1 1/2 bath townhouse. Only \$20,000 down will get us talking. Bring your offers to Rod Valverde (RA) Pacific World ERA 488-5733, 232-1434

KAHALUU: Newer 3 bdrm., rustic, secluded cedar pole house. Mountain & ocean views. Fee. Price reduced to \$200,000. By owner - Open daily. Flexible Financing. 239-5406

• 114 REAL ESTATE FOR SALE

KANEONE: Prime area Fee cottage, spacious lot, Courtesy \$119,000 235-6813.

REDUCED \$25,000 Kailua Gardens Poinciana Manor, 3 bdrm., 2 bath, 800 sq. ft. lanai, new carpet, vinyl in kitchen & bath, new paint, washer/dryer, 3 years A/S at 12% mt. Call 261-1500 or 261-4843.

PEARLRIDGE 2 rooms avail. for male and/or female to share in comfortable, quiet 3 bdrm. townhse., \$225 + share utils. 487-2823 after 4 p.m.

KANEONE: Haiku Village room in large home, share kitchen \$200 + utils. & dup. avail. 7-1, 247-5541 eves 847-2186 days.

• 114 REAL ESTATE FOR SALE

MILILANI: 1 lge. furnished bdrm., private sun deck, view, utils. incl. \$240. 623-8671.

LILIHAI Puunui nr. bus, own room, responsible female/same, non-smoker \$200 to \$250. Avail. July 1. 595-3331

BY OWNER, was \$153,500. NOW \$136,500, well kept, spacious 4 bdrm./2 baths, lg. fenced yd., nice Enchanted Lake area, 261-9613

MINNESOTA, the possible dream: 5 fabulous trees covered acres, incredible hunting, fishing, farming & snowmobiling. Many lakes, close to major city. Electric and 3 phone available. \$6000 full price \$900 down, \$59.13 a mo. including 10% interest. Call 595-3692

• 114 REAL ESTATE FOR SALE

BY OWNER, was \$153,500. NOW \$136,500, well kept, spacious 4 bdrm./2 baths, lg. fenced yd., nice Enchanted Lake area, 261-9613

MINNESOTA, the possible dream: 5 fabulous trees covered acres, incredible hunting, fishing, farming & snowmobiling. Many lakes, close to major city. Electric and 3 phone available. \$6000 full price \$900 down, \$59.13 a mo. including 10% interest. Call 595-3692

MINNESOTA, the possible dream: 5 fabulous trees covered acres, incredible hunting, fishing, farming & snowmobiling. Many lakes, close to major city. Electric and 3 phone available. \$6000 full price \$900 down, \$59.13 a mo. including 10% interest. Call 595-3692

MINNESOTA, the possible dream: 5 fabulous trees covered acres, incredible hunting, fishing, farming & snowmobiling. Many lakes, close to major city. Electric and 3 phone available. \$6000 full price \$900 down, \$59.13 a mo. including 10% interest. Call 595-3692

HOME IMPROVEMENT



HANDYMAN



Work done by the hour, day or on contract. Get the job done . . .

At An Affordable Cost! Call us at 262-9775

AFFORDABLE LOW COST BUILDERS

LUMBER



Beautiful your home with one of these exotic woods.

Lumber
Almond Hickory
Angio Ironbark
Aplong Jelutong
Ash Koa
Balsa Mahogany
Beech Manisla
Birch Maple
Bubinga Oak
Cedar Obeco
Cherry Pau Ferro
Damir Pine

Plywood
Particle Board
Marine Plywood
Birch
Spruce
Fir
Koa
Mahogany
Oak
Rosewood
Teak
Walnut
Zebra wood

HARDWOOD LUMBER

2620 Waiwai Ln. PH. 836-3757

WINDWARD PROPERTY MANAGEMENT

Ken Mesa CALL 254-5888

WAHIAWA 410 Kilani Center.

Office space available for lease. Covered parking, air cond., elevator. Ideal for professionals. Call 622-4354 or 621-6418.

MAINLAND BOUND???

ERA Magnum Properties introduces the

MOVING MACHINE™

This exclusive electronic referral system arms you with actual pictures and descriptions of homes in the city you're moving to that fits your needs, and budget.

INTERESTED? CALL....

ERA® MAGNUM PROPERTIES
98-211 Pali Momi Street, Suite 735
Aiea, Hawaii 96701 487-9925

SOLD

If we don't sell your home, we'll buy it.*

KEITH DELONG 254-3235 JOHN PACE 623-9602

ERA® MAGNUM PROPERTIES
98-211 Pali Momi St., #735
Aiea, Hawaii 96701 487-9925

*Some limitations apply. Call the above Certified Specialists for details.

LIZ BENTON REALTORS Presents **The Presidents Club**

CALL NOW 487-7961

Wayne Benton (R) 488-3772 John McFadden (R) 623-6280 Pete Paternmann (RA) 623-6869 George Vickers (R) 625-0177

FREE RENT PLUS SEMINAR

Find out how rent plus + your tax savings can pay your mortgage payments
Thurs., Jun. 10 @ 7:20 p.m. Sat., June 12 @ 9:00 a.m. Tues., June 15 @ 7:20 p.m.

*Tax Consultant will be available

Location: 98-211 Pali Momi Street #411, Aiea, HI 96701
Limited Space Available
CALL FOR RESERVATIONS NOW!!
Principals Only

If we don't sell your home, we'll buy it.*

Your ERA® Real Estate Specialist is now offering a worry-free way to buy and sell a home — the Sellers Security Plan™

First, the Sellers Security Plan can advance up to \$100,000 on the equity in your present home to use as a down payment on your next home, providing you purchase that house through an ERA approved broker and your present home qualifies.

Then if your house hasn't sold after 210 days, ERA will buy it, at a price and terms you agree to when you accept the plan.

A minimal application fee and certified appraisal are required to see if your home qualifies.

The ERA Sellers Security Plan. Equity advance and assured sale at a price you can live with.

*Some conditions and limitations apply. To see if you qualify, call your ERA Real Estate Specialist and review the Sellers Security Plan contract.

ERA® STOTT REAL ESTATE ISLAND-WIDE SERVICE 254-1515

© 1982 Electronic Realty Associates, Inc.

ANSWER TO JUNE 2 CROSSWORD IN THE SUN PRESS NEWSPAPER.

Across
1. FIRE MARSHALS
2. LONE TATES
3. EAT GINE
4. DENIM DRIVING
5. GOROS NIECE
6. OESTOR STONE
7. ATEASE HELO
8. CAL SORARE
9. ELLIE IVAN
10. THIRTEEN
11. ARSE JONT
12. DOORWAYS
13. ZIP AOT
14. FLOORSANILERS
15. TELE AIRE
16. AVISO ANNA
17. LEFT HAND
18. CLEANSER
19. SLEETV
20. SOLERS

Down
1. BARGES
2. AGNOSTIC
3. DIALSTONE
4. DELEED
5. RAZE
6. GRAINS
7. MNO TYRE
8. VEALC TOP
9. MANN YETI
10. WARDERS
11. ERIE ATBAT
12. ENAGED EZO
13. CHAT SARYRE
14. AHAHAYLES
15. OSSA LEI
16. VALUE ALTE
17. DRILLMASTERS
18. EPOPEE ARRET
19. MISSA

America's Greatest Puzzle . . .
Every Week from the New York Times

BUSINESS & SERVICE DIRECTORY

<p>Attorney</p> <p>DIVORCE from \$185. Evening appointments available. Kathy J. Gumpel, Attorney 235-5880</p>	<p>General Contracting</p> <p>REMODELING, Additions, Repairs, New Construction, Quality Carpentry. FREE estimates. Ph. 261-5922, C-11350, Roland.</p>	<p>Handyman</p> <p>HANDYMAN Repairs, no job too small or too big! Call Gue or Earl 262-9942, 455-7200</p>	<p>Landscaping</p> <p>DESMOND YARD SQUAD All jobs large & small, general cleaning, trimming & hauling, etc. Preparation & grass planting, soil gravel & red chips. Monthly maintenance. Fast reliable service. Free estimate. Call 262-7571 Ask for Desmond</p>	<p>Mail Boxes</p> <p>Apt. - Comm. - Residential New Boxes - repairs - all areas The Mailbox Man - 247-4732</p>	<p>Moving</p> <p>HAULING Island Wide S & S DELIVERY, INC. Apartments & Office Moves Piano Furniture Appliances Large Or Small Jobs 239-9118 Lic. 124C 833-1857</p>	<p>Painting</p> <p>S. UMENO PAINTING Free Est. Lic. C-10211 Ph. 621-6523, 621-6393</p>	<p>Piano Tuning</p> <p>POBANZ PIANO SERVICE A Family Tuning & Repair Service in Kailua for 25 years 262-4260</p>	<p>Window Awnings</p> <p>Cools your house and protects your rugs & drapes C.P.B. Inc. 247-4732</p>
<p>Construction</p> <p>HARDWOOD DESIGN CO. Kitchen & bath remodeling. Lic. C-11352, Ph. 638-7861</p>	<p>Home Repairs</p> <p>REPAIRS-Renovations - remodeling & new homes. All drafting & designing necessary for bldg. permits, etc. FREE est. for construction. Quality workmanship. Arnold's General Contracting (BO4987) 735-4962.</p>	<p>Home Repairs</p> <p>ELECTRICAL: Home repairs, electrical, screens, glass, locks, doors, fixtures, etc. 737-8565.</p>	<p>Locksmith</p> <p>BONDED Locksmith: Keys made, locks repaired, emergency openings. Pap's Locksmith Serv. 261-9681</p>	<p>Masonry</p> <p>CHARLES Dysart Masonry All types of block brick & wood fences, additions new construction, slabs paths. 488-3340 BC7828</p>	<p>Painting</p> <p>U & R PAINTING Free Est., Reas. Rates C-09724 Phone 247-4807</p>	<p>Patio Covers</p> <p>Alean - Hommet - A-Fab Free Estimates - Low prices C.P.B. Inc. 247-4732</p>	<p>Pool Service</p> <p>PRIMO Pool Service Low rates FREE delivery discount with ad. 261-9084</p>	<p>Roofing</p> <p>STATE ROOFING General Roofing, Free Estimates, Ben Pascal 37 years Exp. Lic. C-2036 Ph. 247-2421</p>
<p>Kailua Construction</p> <p>Complete home remodeling, additions, garage, etc. Call 262-8221 or 262-8278</p>	<p>PATIOS AND NEW ADDITIONS</p> <p>Repair-garage. Free Est. Clifford Iwane C-4477 Ph. 877-4695</p>	<p>Christopher's Cooking Class</p> <p>Intensive Course • Basics MODIFIED FRENCH CUISINE For Info Call 239-5581</p>	<p>Takushi Therapeutic Shinkai Massage</p> <p>back problems or pinched nerves? 45 1046 Kaimly, Rm. 207 Ph. 247-2773 or 236-3216 By Appointment Only License No. H45 00732</p>	<p>KAMAIIA PAINTING</p> <p>Free Estimates Lic. 04787 Ph. 247-8621</p>	<p>OLD RELIABLE</p> <p>J. PAUL DILLINGER TUNER TECHNICIAN 261-0457</p>	<p>KOKUA TREE TRIMMER & YARD SERVICE</p> <p>We do all kinds of yardwork: Tree pruning or removing, lot clearing, mowing, grass planting. Low bi monthly yard care. Free Estimates. Any Time. Any Place 261-1889</p>	<p>FRED Domingo Gen. Yard</p> <p>Care, hauling, lot & apt. cleaning. Free Est. 422-7496</p>	

114 REAL ESTATE FOR SALE
 WAIPAHU, 3 bdrm, 1 bath house, \$67,000. 55 yr. lease. MLS #730. Glen Fontillas (RA) 456-1346. Tanaga Realty 488-7769

UPPER MAKAKILO, Palahua Vista, 92-1138 Makani Loop, 30 YEAR FIXED RATE
 Financing available at 12.9%
 IMMACULATE, highly upgraded 3 bdrm, 2 bath home w/ig, family rm, island & 2 car garage, \$145,500. fee simple, shown by owner, 672-9494

115 REAL ESTATE ANNOUNCEMENTS

MARGARET LOCKRIDGE
 Real Estate Service
 You Show We Transact 1 1/2%
 You Save
 262-5403 or 262-5307

117 REAL ESTATE FOR TRADE
 VIRGINIA Owner desires equity trade, 4 br 2 1/2 bath 6 1/2 VA \$48K. \$45K Equity. 5 min Langley Ave. Ft. Monroe 230 min. Ft. Eustis, Nev. Base Norfolk, I.C. Col. G. Pool 102 Bear Creek, Hampton, Va. 23069 804-850-2237

120 FURNITURE
 DON'T pay for showroom. Buy direct & save. It's guaranteed. Waterbeds & stereos 671-6057
 DINING set, large wood table, 6 pc. back fabric chairs, excl. cond. \$200. King bed, excl. quality and cond. \$100. 395-1734 eve.

TWIN Bed, w/headboard, \$100
 239-7491

KAMA'AINA USED FURNITURE
 (Behind Culler Ford Area)
 Double bed \$69; single bed \$79; colonial style sofa \$125; walnut bookcase unit w/built-in desk \$148; La-Z-Boy recliner, rocker \$125; 5 pc. dinette \$49.75; 2 pc. dinette \$149; console stereo \$99; black vinyl love seat \$79; 6 drawer dresser w/mirror \$69; oak din. rm. set, 7 pc. \$449; ipe oak china cabinet \$499; sofa, chair, coffee & 2 end tables \$149; lamps \$10 ea.; much more. 488-1985

STANDARD Double bed, good cond., \$45
 Ph. 239-9307
8' LIGHT Green couch, \$100
 Ph. 235-2956

EXECUTIVE Desk - 6', Philippine Mahogany, 2 pc. drawers, \$250. High back swivel exel. chair \$75 Ph. 261-2056

DINING room set - table, 6 chairs & buffet, Call 261-5112
BABY crib w/mattress & bumper pad, very good cond., \$65. Call 261-2871

LIVING rm. set, 3 pc., white wicker, like new cushion, pillows, top cond. \$550. 488-9404 after 5 p.m.

PARADISE USED FURNITURE
 Queen size sofa bed, excl. \$300; double bed \$200 complete; twin bed \$50-\$150; 3 pc. queen bed set \$400; king size water bed \$395; 7 pc. natural rattan din. set \$600; student desk \$75; sofa & matching love seat like new \$550; antique headboard & footboard double size \$300; koa rocker \$450; 3 section rattan couch \$125; 5 pc. rattan dining set \$250; fruitwood buffet \$200; ipe king headboard new \$125; queen headboard \$50; antique Victorian style vanity \$750; also lamps, tables & more. 261-8492. 320 Ulunui St., Kailua. WE ALSO BUY USED FURNITURE

KAPIOLANI USED FURNITURE
 Large selections of pre-owned home furnishings at rock bottom prices. Come browse. 747-B Kapiolani Blvd., Ewa between Cooke & Ward. Open every day. 537-9181

KING size bed, \$100
 Ph. 235-8371
MONGOOSE bike \$50, weight bench (leg lifts squat rack) \$45, desk \$20, Hoover vac. \$30, misc. items. Ph. 395-7780

SQUARE Table & 2 side chairs, \$79
 719 Paopua Pl., Kailua

DINETTE set w/4 chairs; two 2-drawer low boys; hanging lamp. 261-1870. 262-8298

\$\$\$ CASH \$\$\$ for used furniture - beds Rattan & Wicker
 533-1323
 537-3212 anytime

RATTAN bar 6, 5 stools, built-in refrigerator \$230 after 4 p.m. 396-6029

GARAGE Sale, 9-2, Sat. 12 Sun. 13 beds, sofa, plants & misc. 44-721 Alakali, Kaneohe. 247-5049

GARAGE Sale, June 11, 12 & 13. Old style metal dresser w/mirror, white rolltop desk; file cabinet; collectible items & lots of misc., 1119 Manulani St., Kailua.

COLONIAL style Maple Pedestal table & 4 captains chairs \$375. Hutch \$225. Perfect cond. Ph. 395-4753.

FOR SALE Queen size sofa sleeper in good cond. Sleeper unused \$300. Ph. 422-0433

FINE Furniture, draperies, odd end ends, plants. Call 261-8489 after 4 p.m. Good bargains.

120 FURNITURE
 KING size redwood bookcase waterbed, good cond. \$150.00 8-9 623-3094

CUSTOM WOOD bunk beds, make offer.
 Bob 524-5822/235-5435.

126 MISCELLANEOUS
 MARY Kay Cosmetics for Free Facial and/or hair color Call Elizabeth 262-0463

MOVING, MUST SELL: Asst'd lamps, Mongoose bike, stereo, nightstands, student desk, queen size water bed, piano, rattan bar w/stools, sofa bed, many garage sale items. 623-6888

VCD
 We take almost anything in on trade. Please see business in children. **Vacuum Cleaners \$19.95 & up.**
 Kirby, Filter Queen, Electrolux, Rainbow, etc.
 In house financing available. **Vacuum Cleaner Doctor**
 (Behind Culler Ford Area) 488-7749

DINING Rm. table, 4 chairs, nutch, maple, good cond. \$1500; sofa hide-a-bed, gold, \$85; Recliner, gold \$150, table, 4 chairs, \$65; stereo stand \$35; organ, Lowrey \$50; drum tables (2) \$35 ea.; coffee table, \$35; TV, RCA, 23", \$300. Labor chair, \$15; stereo cabinet, amplifier, turntable, \$75; slat stools, \$30, bed frames, twin (2) \$15 ea.; desk, \$10, desk chair, \$25; lawn mower \$50; chest of drawers, \$25; microwave \$150; ironing board \$15; dishes, glasses, small appliances, curtains & bric-a-brac. Ph. 487-3472

60 FEET plus chain link fence, \$40; baby car seat \$10. Ph. 235-8940

SELLING Maple rockers, lamps, lawn mower, pine bureau, desk, window shades and more. 235-2438

DINING table & 8 chairs, \$360; a/c, \$80; trampoline exerciser \$85; frost free refrig. \$120; freezer \$40; power mower \$40; wall system \$100. Call 377-5030

BEAUTIFUL raw silk hand-made & embroidered wedding dress, size 8. \$150.00. Once. \$75. Ph. 638-7082 eves.

POKER Table w/3 chairs, \$40; 2100 BTU A/C, needs work \$50; GM Infant & love seat, \$7 ea.; baby carrier \$3, plants. 455-4861

CURTIS Mathis 6' home entertainment center console w/25" color TV, stereo, 8 track & cassette player & recorder. AM/FM radio, 1 yr. old, walnut finish. Cost \$3000 now, excl. cond. Make offer. 261-2120

AIR CONDITIONERS - New & used for sale with warranty. Service & repair on all makes & models of room air conditioners. We pay cash for used & broken air conditioners. CALL AIEA AIR CONDITIONING 487-7479

LADIES Fun! Fun! Fun! Have your Naughty Lady's Panti-Creeps & Lotion Bottoms! Best prices! Hottest lingerie! Ask about Hostess credits. Call Now! 235-8022. Sales Rep's wanted

WATER Bed, King size 6 dr. pedestal \$600/best offer. Eves. ph. 262-8561

CARRIER Air cond., 32 BTU \$200/off; Akai tape deck \$125 to reel, offer; Metaltica Palms & other beautiful plants for landscaping or house. Call 623-0626

BROWN Rug w/pad, yellow rug; fencing, air cond., bar stools, dishwasher, lawn chairs. Ph. 422-1144

28 GAL. aquarium w/filtration system, salt or fresh water, accessories \$60. 396-6094

BUTTONS
 manufactured by SCHIELER-APOLAN
 Quick Service
 239-7155
 17-406 E. Kaneohe Blvd., Kailua. We also supply buttons (artie)

THERMADOR Char-grill gas bar-b-q, built in type, cost over \$500, unused \$375. Ph. 262-8660

MEN'S 10 speed bicycle \$95, good condition. Call 395-5527

LINGERIE & Specialty Boutique, newly opened at 1342 Kapiolani or call 949-7114 for a home party.

BALDWIN Upright Piano, \$1800/off. 235-2535

PANASONIC Video tape recorder, late model, excl. cond. \$450. 395-8993

ALMOST New 2 way exercising cycle & Singer sewing machine, \$70 ea. g piece used carpet & padding, excl. cond., offer. 235-3187

Vacuum Cleaner Doctor
 Vacuum Cleaner Sales & Repair
 All Makes-Free Estimates
 Pickup and delivery islandwide
 We make house calls
 Sat. & Sun. Free Market
 Aloha Stadium #122
 (Behind Culler Ford Area) 488-7749

126 MISCELLANEOUS
 1 CAMPER'S BOATERS' HIKERS!
 This multi-purpose camping knife weighs only 2 1/2 oz. It has a knife, fork, spoon, bottle/can opener, Super for camping or for hot lunches on the job. Top quality stainless steel. Reg. \$9.98 - until 7/31 \$7.99 plus 4% sales tax. Satisfaction guaranteed. N.E. 901 Koko Isle, Hono., 96825.

FREE Lanel enclosure. You take down and haul. 624-3511 after 5 p.m.

TOY Poodles, registered \$50 and up. 823-9736 2 tea cups - Best offer.

SINGER Sewing machine, 1 yr. old, zip-zag blind hem, overlock, stretch stitches, built-in buttonhole, cabinet incl., like new. Must sell. \$195. Call 488-9966

NEED A BED?
 Quality Englewood Construction With beautiful floor on Outfitted Cover
 Warranty, Satisfaction Guaranteed.
 Twin Set \$165
 Full Set \$189
 Queen Size \$219
 King Size \$279
 Waterbeds from \$175
 Bed Sets from \$396
 Cribs - Pedestal Beds - Rollaways
FREE DELIVERY - C.O.D. PHONE ORDERS ACCEPTED 735-2448

BED RENTALS & SALES OF HAWAII
 3632 Waiwae Ave. (Behind Bank of Hawaii off Center Street in Kaimuki)
 \$150.00. Credit. Low Down Payment
 Remember - Portuguese Beds Make Better Lovers

VACUUM Cleaners, with guarantee, \$19.95 & up. Ph. 456-4211, 955-8854.

MARY KAY COSMETICS. For re-orders & FREE facials, call Yolanda 259-9021

HOTPOINT refrig., \$40, pool tbl. needs repair \$40, pottery kiln \$25, 2 wheel trailer \$45. 261-9952 eves.

ROY'S LAWN MOWER REPAIR
 Free Estimate
 Lawn mowers for sale
 Rotary \$65. Reel \$125
 Guaranteed
 259-5927

WEDDING dress size 6, ivory organza, lace applique with seed pearls, headpiece to match, detachable long veil \$250 261-2412

GIRL'S 3 piece French Provincial bedroom suite \$170; bunk bed \$95, papasan chair \$15; Whirlpool washer/dryer matching set 2 yrs. old, harvest gold excl. cond. \$400. Call after 6:30 261-2146.

SEARS Kenmore air conditioner, used 3 months, like new cond. 14,000 BTU \$300. Call 254-4778 after 5 p.m.

9' HYPALON inflatable raft \$150. Call 262-9213

2 HAW N quilts overcasted but needs quilting \$350 ea. or offer. 7' sofa very good cond. \$250 or offer. 247-2318.

SAMOAN coconut plants for sale. 2 feet to 5 feet. Call 261-5694.

GOLF clubs, bag & cart \$130; amp, turntable, speakers \$150; 15" galvanized pipe rack \$15; 1 ton \$75; Pinto bucket seats, pair \$40; '71 Buick skylark \$200, high Performance boss 302 engine complete rebuild w/iron \$500. Ph. 293-8212

BICYCLE 3 spd. 26", good condition \$50. Call 261-9992

HAVE A BAG PARTY! Organizations, exciting new fun way to earn money! or receive FREE GIFT. For more info, call 488-1265 eves.

WASHER \$150; dryer \$110 hand mower \$20. Call 262-0324.

HEAT Pump, efficiency 11, unused in original carton \$750. Evenings 536-0433.

RAINBOW Vacuum, like new, cost \$500, must sell \$175. Ph. 455-8441, 923-7843

DOUBLE bed, Sears \$125 double slide glass door 8' x 6' Call 623-8675

LIVINGROOM set, 3 pc., excl. cond., \$600/off. coffee tbl. gd cond. \$80, crib w/mattress, \$40, air cond. \$200, sewing mach. \$120 Ph. 625-266 or 623-8955

127 APPLIANCES
 UPRIGHT FREEZER, Sears 15 ft. like new, \$275. Ph. 456-3243

WASHER and/or dryer, guaranteed, delivery available. \$100 ea. Ph. 624-2565

1 1/2 yr. HEAVY Duty Whirlpool washer, excl. cond. \$200. Ph. 262-8327.

CHEST freezer - Admiral 15 cu. ft. good cond. \$250. Call 422-1506

LARGE Frost-Free Kolvinator refrigerator, excl. cond. \$250. Orbi-on gas range good cond. \$150. Both 2 years old/gold Ph. 422-0754 anytime.

127 APPLIANCES
 FRIGIDAIRE, frost proof, freezer & icebox, refreshment center, 30.9 cu. ft., has 2 beverages, ice water & ice cubes on door. Avocado green asking \$700 or offer. Value \$1700 Ph. 261-7402, 538-2191

FREE Adorable all white and calico kittens looking for good home. Litter trained. 262-7496

FREE domestic kittens (4), loving, litter trained, 7 weeks old to good homes 734-1698.

136 MISCELLANEOUS
 WE BUY and sell furniture. We pay cash and pickup Call 261-8492 or 261-1408

CASH for Lawn Mowers & Outdoor Motors.
 Any Condition. Ph. 259-5927

KAMA'AINA USED FURNITURE
 Now buying all types of furniture. Top cash. 488-1985
 FLYING to Boston? Would like to ship my dog on your ticket. Will pay \$25. DWH 287-3621, John Knapp.

WANTED TO BUY, used mag card typewriter. Contact Corinne 533-4185.

WANTED: Small dinette set w/woodgrain top, in good cond. Please call 235-5861, 9-5, ask for Robin.

WANTED: Unserviceable RCA, Zenith & Motorola color TVs. 823-2328

WANTED: 6mm Movie film of Empire Strikes Back (Star War II). Will pay fair price. Call 239-9510

WANTED: Lg. size Airline dog carrier for German Shepherd 638-7082 eves.

WANT to buy 3 wheel adult bicycle. Call 456-5470

141 BUILDING SUPPLIES
 FIBERGLASS-Acrylic showers, tubs, vanity wash bowl. CHEAP. 247-3328.

144 MUSICAL SALES & SERVICE
 RECONDITIONED Buscher Alto saxophone \$210 or offer. Ph. 262-0732.

UPRIGHT Piano, very good tone & cond. 1920 vintage \$650. Ph. 261-6634.

PEAVEY PA Speakers, monitors, 3 microphones, saffire \$12,000. Ph. 422-0425

Ovation 12 string, \$400/off; Yamaha 30 watt guitar amp, \$250. Excl. cond. 247-3396

CHET ATKINS MODEL GREY GUITAR
 DIAMOND ANNIVERSARY EDITION
 SELL OR SWAP FOR BETAMAX
 1925 GIBSON BANJO MOTHER OF PEARL NECK RESTORED
 Ph. 239-7367 AFTER 8 PM

146 BOAT SUPPLIES & SERVICE
 CI 41, KETCH Alt cockpit model, beautiful condition Perkins Diesel, American Rugging 1 size overize. Fully equipped for world cruising. RVG windvane, VHF and SSB Radios. Seller will help finance. \$85,000 or offer. For appointment to inspect call Mick McMurdo 955-5403

FREE: Kitten, 1 multi/white, 1 orange/whit. Call 261-6230.

FREE: Labrador puppies, to good homes. Ph. 682-3864.

FREE: Puppies, cute and loving, very healthy with shots. Call 395-9998.

FREE: Kittens, 1 multi/white, 1 orange/whit. Call 261-6230.

FREE: Kitten, 1 multi/white, 1 orange/whit. Call 261-6230.

FREE: Kitten, 1 multi/white, 1 orange/whit. Call 261-6230.

FREE: Kitten, 1 multi/white, 1 orange/whit. Call 261-6230.

FREE: Kitten, 1 multi/white, 1 orange/whit. Call 261-6230.

FREE: Kitten, 1 multi/white, 1 orange/whit. Call 261-6230.

FREE: Kitten, 1 multi/white, 1 orange/whit. Call 261-6230.

131 WIKI WIKI FREE BEE
 FREE Adorable all white and calico kittens looking for good home. Litter trained. 262-7496

FREE domestic kittens (4), loving, litter trained, 7 weeks old to good homes 734-1698.

136 MISCELLANEOUS
 WE BUY and sell furniture. We pay cash and pickup Call 261-8492 or 261-1408

CASH for Lawn Mowers & Outdoor Motors.
 Any Condition. Ph. 259-5927

KAMA'AINA USED FURNITURE
 Now buying all types of furniture. Top cash. 488-1985
 FLYING to Boston? Would like to ship my dog on your ticket. Will pay \$25. DWH 287-3621, John Knapp.

WANTED TO BUY, used mag card typewriter. Contact Corinne 533-4185.

WANTED: Small dinette set w/woodgrain top, in good cond. Please call 235-5861, 9-5, ask for Robin.

WANTED: Unserviceable RCA, Zenith & Motorola color TVs. 823-2328

WANTED: 6mm Movie film of Empire Strikes Back (Star War II). Will pay fair price. Call 239-9510

WANTED: Lg. size Airline dog carrier for German Shepherd 638-7082 eves.

WANT to buy 3 wheel adult bicycle. Call 456-5470

141 BUILDING SUPPLIES
 FIBERGLASS-Acrylic showers, tubs, vanity wash bowl. CHEAP. 247-3328.

144 MUSICAL SALES & SERVICE
 RECONDITIONED Buscher Alto saxophone \$210 or offer. Ph. 262-0732.

UPRIGHT Piano, very good tone & cond. 1920 vintage \$650. Ph. 261-6634.

PEAVEY PA Speakers, monitors, 3 microphones, saffire \$12,000. Ph. 422-0425

Ovation 12 string, \$400/off; Yamaha 30 watt guitar amp, \$250. Excl. cond. 247-3396

CHET ATKINS MODEL GREY GUITAR
 DIAMOND ANNIVERSARY EDITION
 SELL OR SWAP FOR BETAMAX
 1925 GIBSON BANJO MOTHER OF PEARL NECK RESTORED
 Ph. 239-7367 AFTER 8 PM

146 BOAT SUPPLIES & SERVICE
 CI 41, KETCH Alt cockpit model, beautiful condition Perkins Diesel, American Rugging 1 size overize. Fully equipped for world cruising. RVG windvane, VHF and SSB Radios. Seller will help finance. \$85,000 or offer. For appointment to inspect call Mick McMurdo 955-5403

FREE: Kitten, 1 multi/white, 1 orange/whit. Call 261-6230.

FREE: Labrador puppies, to good homes. Ph. 682-3864.

FREE: Puppies, cute and loving, very healthy with shots. Call 395-9998.

FREE: Kittens, 1 multi/white, 1 orange/whit. Call 261-6230.

FREE: Kitten, 1 multi/white, 1 orange/whit. Call 261-6230.

FREE: Kitten, 1 multi/white, 1 orange/whit. Call 261-6230.

FREE: Kitten, 1 multi/white, 1 orange/whit. Call 261-6230.

FREE: Kitten, 1 multi/white, 1 orange/whit. Call 261-6230.

FREE: Kitten, 1 multi/white, 1 orange/whit. Call 261-6230.

FREE: Kitten, 1 multi/white, 1 orange/whit. Call 261-6230.

FREE: Kitten, 1 multi/white, 1 orange/whit. Call 261-6230.

146 BOAT SUPPLIES & SERVICE
 27' FAIRLANE completely rebuilt, fishing/pleasure full equip. excl. cond., survey at 15,500 w/o fishing gear. Leaving. 7495/422-7744

21' CLIPPER w/trailer, all accessories, 20hp Chrysler outboard \$3600 Firm. 254-3795.

14' SUNFISH sailboat & trailer, excl. cond. \$540. Ph. 487-881

CHEVROLET

'74 MONTE Carlo, p/s, p/b, a/c, new tires, good cond., clean interior, needs paint, \$500 or best offer. 262-5793

'70 CHEVY 4-door station wagon, Best Offer. Ph. 261-9636 — Raymond.

'73 CUTLASS Supreme, \$1500/best offer. Good condition Blue and white vinyl top. Ph. 458-1347 June.

'86 MALIBU 327, 2-dr., automatic, radio, good cond. \$850. Evenings ph. 455-8221

DATSUN

'73 DATSUN 810 wagon, new red paint, mint condition \$1800/negotiable. 254-2076

'76 DATSUN B210 4-door sedan, \$1600. Ph. 262-0536 or 261-5764.

DODGE

'74 DODGE Colt, auto, wgn. good 2nd or beach car, \$650 or offer. 395-2502

'72 DODGE Dart, good cond., original owner. Call 261-6297

'71 DODGE Charger, complete eng/trans overhaul. Asking \$2100. 677-6761, 471-3579.

FIAT

'76 FIAT Sport-Spyder, convertible, good condition. New tires, good mi., FUN CAR! \$2500. Ph. 262-1261 Errol.

'78 FIAT 131S, 4-door, 5 speed, \$2500/offer. Ph. 262-4027 or 261-1237.

FORD

'74 PINTO Wagon, whole or parts, no engine, 247-1858, 254-2415 Jim

'71 FORD LTD 2-door hardtop, V8, auto., excel. cond., no rust, full power, stereo \$595. 621-5616 after 2 p.m.

'73 GRAN Torino station wagon, good condition, needs battery \$500.00 or offer 254-4797 anytime.

'65 MUSTANG, rebuilt engine, needs minor parts \$400 Ph. 261-9636, Raymond.

'77 GRANADA, red, new carpet/tires, real beauty. \$2000/best offer 262-6538 or 239-9266

'85 FAIRLANE, Good condition, 2-dr., 6-cyl. Very recent engine overhaul, receipts, \$890/offer. Call before 6/7/82, 526-1448.

HONDA

'70 HONDA AN800, runs great, body good, leaving island, must sell. 422-5892.

LINCOLN

'78 MARK IV, 2 dr., white/tan, all power, AM/FM radio/8 track, moon roof, top cond. \$2500. 488-9404 after 5 p.m.

'71 LINCOLN, p/s, p/b, p/w, a/c, very little rust, real luxury \$600/offer. 254-3183

MAZDA

'79 626, 4 dr., 4 spd., a/c, AM/FM, very nice, one owner \$5195. 261-3250.

MAZDA

BANK REPOSSESSION
'81 GLC 3 dr. auto., radio, heater, immac. (BPN320) \$375 cash dn. pymt. + tax & lic. OAC. Repossession price \$4893.51. See repossession mgr.

WHOLESALE MOTORS
836-1222 2999 N. Nimitz Hwy.

BANK REPOSSESSION
'81 GLC 3 dr. auto., radio, heater, immac. (BPN320) \$375 cash dn. pymt. + tax & lic. OAC. Repossession price \$4893.51. See repossession mgr. Wholesale Motors.

WHOLESALE MOTORS
Ph. 836-1222 2999 N. Nimitz Hwy.

ASK ABOUT OUR WARRANTY
60 MOS/80,000 Mi. on

'82 MAZDAS

BUY OR LEASE
RX7, 626, GLC
From \$5349 on
Hawaii's Oldest Mazda dealer
WHOLESALE MOTORS
836-1222 2999 N. Nimitz Hwy.

Going to OREGON to buy a new car or pickup?
— contact —
ROBERTS & REDFIELD
PORTLAND
Write for price lists and full information
ANY MAKE - ANY MODEL
Delivered - road tested at Portland International Airport
ROBERTS & REDFIELD
Suite #102
8829 N.E. 82nd
Portland, Oregon 97220
(503) 287-0551
Conveniently located just 3 minutes from Airport

MAZDA

1973 MAZDA RX-3, 4 dr. wsg. auto. trans., 43,000 miles \$1200. 471-9196/422-7747

MERCEDES

GREAT gift for Father's day 450 SEL Mercedes Benz sedan, original owner, must see to appreciate \$11,000 firm 262-7484.

MERCURY

'76 MONARCH, white, 4 dr. sdn., excel. cond., \$1,700/offer. Call 672-3616

'74 COUGAR XR-7, excel. cond., All options \$1942/offer. Must sell 624-4401

MG

'74 MGB, Convertible, good runner, \$2750. 455-4861

MG

'51 MGTO Replica, 38 mpg., excel. mechanical cond., custom interior, AM/FM cassette, many extras, beautiful show car \$12,000 or best offer. Call 422-5370

'78 MG Midget, blue, great cond., no rust, new tires, \$3800. Call 926-1146

OLDSMOBILE

'71 OLDS Cutlass, needs body work but excl. mech. cond. \$450/best offer. Call 455-9154

'76 CUTLASS Supreme, air cond., top cond., maroon vinyl roof, white body, \$2600 or best offer. 283-5382 or 293-8441.

PLYMOUTH

'78 VOLARE, 4-door, excel. cond. \$2450. Call 621-3311 or 821-3356

'74 DUSTER 318, 4 barrel, mechanics special \$580 Ph. 833-3681

PONTIAC

'76 GRAND Le Mans, all power, a/c, AM/FM, clean \$2200. Call 262-6872

'79 GRAND PRIX, low mileage, excel. cond. \$5000/offer. Major Bickley 477-6850

'77 PONTIAC Lemans, 2 dr. gd. running cond., AM/FM cassette stereo, \$2000 Ph. 254-1987, evenings.

TOYOTA

'71 TRIUMPH, needs transmission, best offer. Ph. 261-9636, Raymond.

VOLKSWAGEN

'74 VW Thing, convertible, good condition, \$1800. Ph. 624-2667.

'73 THING, good cond. \$2000 or best offer. Call 262-6292 1:30 a.m. to 5 p.m.

'73 VW wagon \$1800 call 833-2487 or 841-3971 good condition.

'69 VW BUG, newly rebuilt engine, really good body \$1600 Ph. 262-5463

'80 RABBIT, convert. bronze w/many extras, low miles \$8500. Ph. 239-9307

'76 VW RABBIT, 4 dr., 4 spd., excel. cond. \$2500 Ph. 524-6955

VOLKSWAGEN

'88 VW Bug, excel. cond. Best offer. Call 621-3358 after 6 p.m.

'78 VW Convertible, a/c, Michelin, \$8195, 455-4861

'85 VW BUG, exterior & engine excel. interior fair \$2100 or best offer. 821-1037

'80 DIESEL Rabbit, 2 dr., only 14,000 mi. w/80,000 miles warranty \$5300 235-6597

VOLVO

'70 VOLVO wgn. needs new engine \$550. Call 259-5982

MILITARY!!

\$200 DISCOUNT on any car with this Ad!

'74 REGAL 2-dr. auto., p/s, nice car. (BPF244) \$995	'73 CAMARO Auto., p/s, excellent transportation (BRT972) \$995	'73 LTD SQUIRE Loaded, excel. family car (BNY874) \$995
'77 LTD II Auto., p/s, a/c, excel. cond. (MCT609) \$1795	'75 NOVA Hard to find! 6-cyl. p/s, auto. (BPC834) \$1995	'73 OLDS Cutlass Supreme, 2 dr., black on black (B8N573) \$1995
'78 MUSTANG GHIA 4-spd., 6-cyl. p/s, excel. cond. Red with white (BNT275) \$3495	'79 SUNBIRD 4 spd., air conditioning. Super nice. (BNO148) \$3495	'77 DODGE Colt, auto., air conditioning excellent (AOY277) \$1995
'79 CIVIC CVCC 5 spd., 4 cyl. immaculate (ASV807) \$3895	'80 SCIROCCO Loaded, a/c, cassette. Only 10,000 mi. (AGE604) \$5995	'79 RX7 Popular GS model, 5 spd., sunroof, alloys, immaculate (BAC011) \$6995

WAIPAHU'S SHELLY MAZDA

94-212 Leoku St., Waipahu 677-0761

All units subject to prior sale

ANNOUNCING ALL NEW 1982 310's

IN STOCK ONLY **\$40*** OVER FACTORY INVOICE

NEW '82 720 TRUCKS FROM ONLY **\$5982***

NEW '82 STANZAS FROM ONLY **\$6195***

ROAD & TRACK MAGAZINE on the New Nissan Stanza — "State of the art. Combination of space, comfort, performance, road ability & fuel economy."

All Prices Plus Accessories (if any), Tax and Lic.
Offer Good 6-15-82. Cars Subject To Prior Sale.

DATSUN WAHIAWA

671-0761
1912 Wilikina Dr.

NATIONAL CAR WORLD

OPEN EVERY DAY

18 MO./18,000 MILES WARRANTY INCLUDED

'81 CUTLASS Supreme, loaded, mint cond., (X100)	\$7995
'78 FORD Fairmont, auto., air., 4 dr., (U1129)	\$2295
'80 DATSUN 210 4 dr., auto., radio (N525)	\$2995
'79 FIAT X19 Excl. cond., (X200)	\$3595
'80 TOYOTA Corolla, auto. trans., radio, 2-tone, (U1104)	\$4195

SAVE Must Go **\$5995** 1980 JEEPCJ5, mint cond. (N456) **\$**

'79 MAZDA GLC, standard shift, radio (U1125)	\$2695
'79 BOBCAT Hatchback (N374)	\$2395
'77 CADILLAC Eldorado, low miles, loaded, mint condition (U1021)	\$5995
'80 PLYMOUTH Horizon, 4 dr., auto., air., 4 dr., (U309)	\$3695

1095 DILLINGHAM BLVD. 841-4261

Hours: Mon-Fri 8:30-7, Sat 9-6, Sun 10-4

VOLVO HAWAII PRE-OWNED AUTO-MOBILES

Loan Power Financing Available
5% down up to 60 mo. to pay. O.A.C.

Open 9 AM to 9 PM
We Will Buy your Prestige or Sports Car!

All cars are available for lease. MILITARY with short rotation welcome. O.A.C.

PORSCHES YOU CAN AFFORD!

'79 930 TURBO 20K miles. (AGC509)

'79 924 Red. (JAXV720)

'77 924 Green. (ANG615)

'76 911 S White. (BCS977)

'68 912 Silver grey. (BCR236)

CORVETTES YOU CAN AFFORD!

'80 Beige Smoked top, leather, factory mags. (CA, IAKH459)

'80 Blue Loaded. (JWIM)

VOLKSWAGENS YOU CAN AFFORD!

'75 RABBIT Red. (BRS418)

'75 BUG Sunroof, yellow. (Sik, P395)

'73 BUG Auto. green. (JAGC396)

'77 BUG Convertible, red. (ANR456) (B8C776)

'74 BUG Convertible, blue. (ANNR456)

'75 SCIROCCO Blue. (BPN003)

'69 BUG Yellow. (BEC360)

MERCEDES YOU CAN AFFORD!

'79 6.9 13K miles. (MP8)

'78 450 SL White. 2 tops. (AT027)

'77 450 SEL Dk blue. (SOS4)

'75 450 SL Green. 2 tops. (APT545)

'74 450 SL Dk blue. (JAAV360)

'70 280 SL White. (ANF123)

'67 280 SE White. (AXN629)

'66 230 SL Silver 2 tops. (ATU389)

'63 220 SC Convertible, white. (BFP087)

Parts Dept. is open on Saturday from 9:00-1:00

18 month/18,000 mile warranty Available

All units subject to prior sale

Jim Simons-IMPORTS
98-075 Kam Hwy., Alaia
Opposite Pearlridge 487-7974

WAIPAHU AUTO CHEVROLET SALES & SERVICE

671-2871 Division of Service Pacific Inc. Prices good from 6/9-6/13

'77 PINTO S/W 4 cyl., VFA804	\$795
'76 CHEVETTE 2 dr., 4 spd., AXU771	\$795
'74 BUICK CENTURY 4 dr., auto., p/s, BPD777	\$795
'75 VW RABBIT 2 dr., auto., AFT259	\$1595
'77 PINTO Auto., 6 cyl., p/s, BAF853	\$1695
'77 ASPEN S/W Auto., 8 cyl., p/s, a/c, AJY312	\$2295
'78 FORD FIESTA 2 dr., 4 spd., AFN657	\$2395
'74 VW BUG 4 spd., BEV549	\$2395
'75 MGB 4 spd., ASV995	\$2895
'77 MUSTANG 2 dr. highbk., auto., 6 cyl., p/s, a/c, BNR124	\$2995
'79 PONTIAC SUNBIRD 2 dr., 4 cyl., 4 spd., BEX151	\$3295
'79 MUSTANG II 4 spd., Turbo, 4 cyl., p/s, BCF599	\$3995
'80 PONTIAC PHOENIX 4 dr., 4 cyl., auto., p/s, a/c, AFE489	\$4795
'80 DATSUN 210 S/W K8F376	\$4795
'80 MUSTANG Auto., 6 cyl., a/c, AYN067	\$4995
'81 CHEVETTE 4 dr., auto., a/c, AGD022	\$5295

Many More to Choose From: Corvettes, Cutlass Supreme, Grand Prix, Trucks, 94-729 Farrington Hwy.

SHELLY MAZDA HAS A CAR AND PRICE FOR EVERY BUDGET!

\$149 a month

1982 MAZDA ISLAND SUNDOWNER TRUCK

- Lifetime Rustproofing
- 5-Speed
- AM Radio
- Step-Bumper
- Steel Belted Radials
- Tinted Glass
- Bench Seat
- 3-yr./36,000-Mile Shelly Warranty

\$999 down, 60 mos. financing, A.P.R. 18.95%, Cash price, \$6,315. Del. price, \$9,939. Plus tax & lic. On approved credit

\$159 a month

1982 GLC CUSTOM WAGON

With Automatic Transmission

Talk to us about this special offer

\$1,099 down, 60 mos. financing, A.P.R. 18.75%, Cash price, \$6,899. Del. Price, \$10,619. Plus tax and lic.

\$179 a month

1982 MAZDA 626 4-DR. DELUXE SEDAN

- 5-Speed
- Wide Radiat Tires
- AM/FM Stereo
- Power Steering, Tilt Wheel
- Body Side Molding
- Tinted Glass
- Digital Quartz Clock
- Velour or Vinyl Seats
- Split "Fold-Down" Seating
- 3-yr./36,000-Mile Shelly Warranty

\$1,649 down, 60 mos. financing, A.P.R. 18.75%, Cash price, \$8,199. Del. price, \$12,389. Plus tax & lic. On approved credit

Includes 3-yr./36,000-mile Shelly Warranty

SHELLY MAZDA

Waipahu
Next to Sunset Drive-In
Ph: 677-0761

SUPER DEALER SAVE NOW!

<p>'82 CIVIC 4 Door Sedan 5 spd. Life Time Rustproofing. Side Mouldings (P-5540)</p> <p>TONY'S PRICE '7933 DISCOUNT '1000 NOW \$6933</p>	<p>'82 ACCORD HATCHBACK 5 spd. Life Time Rustproofing. Side Mouldings (P-5588)</p> <p>TONY'S PRICE '8683 DISCOUNT '1000 NOW \$7683</p>
<p>'82 PRELUDE 5 spd. Life Time Rustproofing. Side Mouldings (P-5714)</p> <p>TONY'S PRICE '9278 DISCOUNT '1100 NOW \$8178</p>	<p>'82 CIVIC WAGON 5 spd. Life Time Rustproofing. Side Mouldings (P-5566)</p> <p>TONY'S PRICE '7283 DISCOUNT '720 NOW \$6563</p>

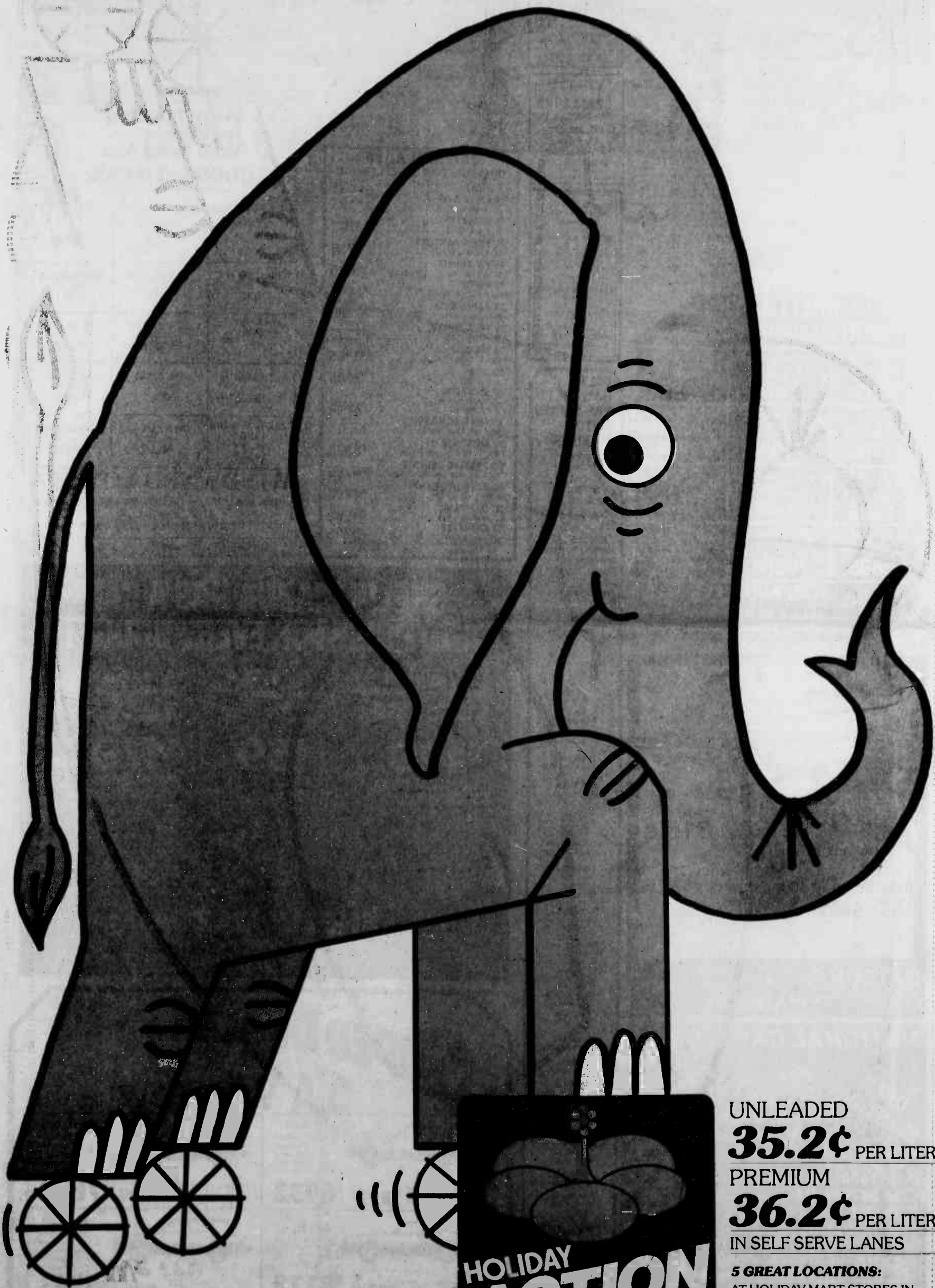
Plus Tax & Lic. Cars Subject To Prior Sale NOW THRU MONDAY

Tony Honda of Waipahu

authorized sales, service, parts
"You don't really have a Honda 'til you have a Tony Honda Honda"
94-281 Farrington Highway • Phone: 671-4761

June 9, 1982

We try hard to hold down the cost of gasoline.



You can expect low prices at

UNLEADED
35.2¢ PER LITER
PREMIUM
36.2¢ PER LITER
IN SELF SERVE LANES

5 GREAT LOCATIONS:
AT HOLIDAY MART STORES IN
HONOLULU • KAILUA • PEARL CITY
AND STATIONS IN
NANAKULI • WAIMANALO