

Milk recall affects Station

The Commissary here accepted more than 2,500 half-gallons of milk for refund during last week's milk recall, according to Commissary Officer Captain James Morris.

The milk, which had been contaminated with heptachlor (a pesticide used by pineapple growers to control ants), was recalled March 18 by state health officials. The milk never posed a health threat, officials said, but was recalled because the heptachlor level exceeded stringent federal regulatory standards.

THE RECALL only affected homogenized milk, half and half and 2 percent milk from Oahu dairies.

"The trend is toward imitation and powdered milk," Capt Morris said. He also speculated that some people might continue using powdered and imitation milk after the recall because it is cheaper than whole milk.

EXCHANGE OUTLETS, including the 7-Day Store and all vending operations, stopped sales of whole milk when the recall

started. The 7-Day Store continued selling skim milk and other non-contaminated milk products, while other outlets quit selling milk until supplies become available.

Other institutions that switched to alternate sources of milk were the dining facilities here. They began serving recombined milk because of the recall, according to Master Sergeant Larry Lair, Food Services Office. The recombined milk will be used until supplies of homogenized whole milk become available.



WHOLE MILK — Sazie Scarbroagh gets a carton of homogenized milk from the 7-Day Store here. Whole milk is in scarce supply now because of the milk recall.

HAWAII MARINE

Voluntary payment for delivery to MCAS housing/\$1 per four week period.

VOL. 11, NO. 13

KANEOHE BAY, HAWAII, MARCH 31, 1982

SIXTEEN PAGES



HERE'S ONE — Staff Sergeant Leonard Halak, Marine Fighter Attack Squadron-212, picks up a discarded strap. Items such as this contribute to Foreign Object Damage. (Photo by Sgt Chris Taylor)

Marines stamp down on 'FOD'

by Sgt Pepper Davis

Approximately two thousand air wing Marines scoured the Marine Aircraft Group-24 area March 24, in an attempt to minimize "FOD."

According to Colonel John Solan, group commanding officer, the mass cleanup of Foreign Object Damage was to "educate the troops, and let them know what's out there. That way they could see the magnitude of the (FOD) problem."

FOD is characterized as anything capable of being sucked into an aircraft's intake system: washers, wire, nuts and bolts, screws, nails, wood, paper, rocks, glass, tile, etc. It is a deadly and dangerous foe of aviators.

IN FACT, if items as small as nuts or screws work themselves into the right position, they can destroy a \$200,000 engine. Aside from engine troubles, FOD can contaminate oil and fuel. Worse yet, it can cause the loss of a life.

The FOD problem is more common to fixed-wing aircraft because of their open intakes. Helicopters are constructed very differently, therefore almost eliminating FOD. However, it does happen.

Col Solan said that of the 13 aircraft engines damaged within the past nine months, 10 were fixed wing. "FOD can also degrade combat readiness over a period of time, and it places an additional workload on aircraft maintenance," he said.

Headquarters and Maintenance Squadron-24's power plant is

tasked with repairing the MAG's aircraft engines. Gunnery Sergeant Henry Palomo, division chief, supported Col Solan's remarks on the work increase FOD causes. He said, "No one knows FOD better than the power plant. Almost anytime an engine comes here for unscheduled repairs, it's FODded."

GySgt Palomo said the manhours required to repair FODded engines are extraordinary, and on many occasions his repairmen have used jeweler files to try and smooth chips on engine blades. He said that process is extremely tedious.

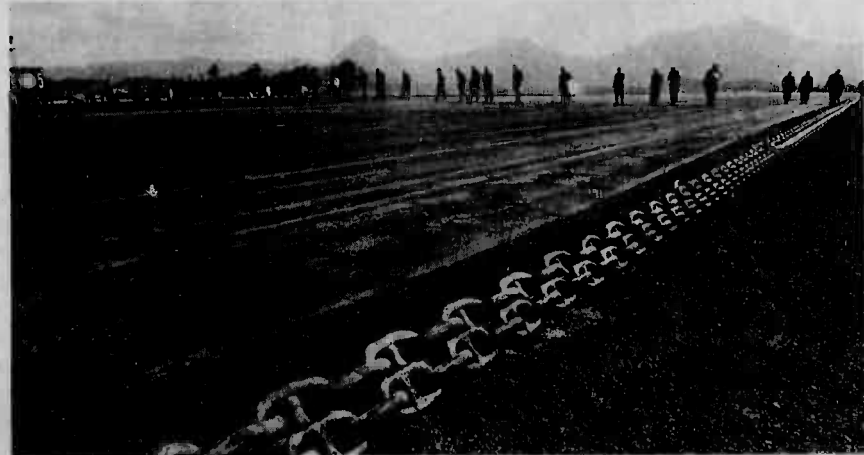
TO DETECT FOD, technicians at HMS-24's Non Destructive Laboratory use X-ray equipment. According to Staff Sergeant Daniel West, a

technician, their sophisticated system works similar to the X-ray apparatus used for medical purposes.

"Our system is more powerful because it has to penetrate metal, and we use industrial film," he said. The intake and the starter pan are the prime areas of concern he said.

When the film is processed, next comes the chore of searching for the foreign matter. SSgt West said to distinguish FOD from the normal structure, they look for irregular patterns. If FOD is confirmed, repairs will begin as soon as possible.

There is no remedy for FOD. It is a perpetual problem that receives priority attention. But, air wing Marines know that the best way to fight the menace is by exercising conscientiousness.



ON LINE — Marines from Marine Aircraft Group-24 move along the Air Station's runway, picking up debris. Approximately two thousand MAG-24 leathernecks scoured the area March 24 for Foreign Object Damage items. (Photo by Sgt Chris Taylor)

Bill now in House of Representatives

Hawaii tuition bill passes state senate

Secretary of Defense Caspar Weinberger has stated in a memorandum to all service secretaries and the chairman of the Joint Chiefs of Staff that he is opposed to the possible imposition of tuition charges on military members for the public school education of their dependents.

"This matter has my close personal attention," the secretary

said. "Please advise your members that I am determined that no soldier, sailor, airman, or Marine will be forced to pay tuition for the public school education of his or her dependents."

Some local, state, and county jurisdictions, including Hawaii, have been considering charging tuition for the public school education of service members.

That action is in response to proposed legislation for reduction in federal impact aid administered by the U.S. Department of Education.

Secretary Weinberger expressed his opposition to the idea by saying, "I want to make clear my view that any such action by states, counties, or school districts is completely unwarranted and that the Department of Defense

will take every possible measure to prevent it."

The Hawaii state House Education Committee was to have heard public testimony Monday on the tuition bill authored by state Senators Neil Abercrombie and Joe Kuroda. The bill (S.B. 2346-82) passed the senate March 17 and is now in the committee chain in the state House of Representatives.

Progress

Construction for lodging facility begins

The first shovelful of dirt for the construction of a new temporary lodging facility here was turned March 22 by Colonel Lou Piantadosi, Head of Morale, Welfare and Recreation, Headquarters Marine Corps. Col Piantadosi was aboard the Air Station to assist and observe club operations.

The \$900,000 facility will be for military members who are awaiting permanent housing. It will consist of 24 units, with kitchen facilities and central air conditioning, according to Major M.R. Massie, Special Services officer.

"Two units will be designed exclusively for the handicapped," said Maj Massie.

Laundry facilities and cable television will also be included.

The single-story facility is being built across from the Air Station Windward Enlisted Club under a one-year construction contract with Ralph S. Inouye Company, Limited. The contractor hopes to complete the new facility shortly after December.

The Showboat, which is currently the temporary lodging facility, will be shut down when the new facility is completed and opened.



DIGGING IN — Colonel Lou Piantadosi, Head of Morale, Welfare and Recreation, Headquarters Marine Corps, shovels the first load of dirt at a ground-breaking ceremony aboard MCAS Kaneohe Bay. (Photo by Chris Taylor)

Change

ADM Watkins selected as Chief of Naval Operations

Admiral James D. Watkins, the Commander in Chief, U.S. Pacific Fleet, has been nominated by President Reagan to serve as the next Chief of Naval Operations.

ADM Watkins, a 1949 graduate of the U.S. Naval Academy, first served on destroyers and then submarines. He reported to his present job in July 1981 after serving nearly two years as Vice Chief of Naval Operations. His past assignments have included duties as Chief of Naval Personnel; Commander, U.S. Sixth Fleet; Commander, Cruiser-Destroyer Group One; and commanding officer of the USS Snook.

The Admiral's awards include the Distinguished Service Medal, the Legion of Merit with two gold stars, and the Bronze Star Medal. He earned his Master of Science

Degree in mechanical engineering at the Naval Postgraduate School in 1959.

ADM Watkins will relieve ADM Thomas B. Hayward as the CNO this summer.



DEERS planners implement Phase X

HQMC, WASHINGTON — Phase X of the Defense Enrollment/Eligibility Reporting System began last month. Active duty and retired personnel, surviving spouses and dependents from all uniformed services living in Minnesota, Wisconsin, Iowa, Missouri, Illinois, Michigan and Indiana will be affected during Phase X enrollment, according to A1.MAR 022 82. Intensified enrollment for the period ends May 4. In 1974, DoD was tasked by Congress to implement a program

which would assist future benefit programs by estimating the cost of these benefits. Also, DoD was tasked to reduce the amount of undetected fraud, abuse and misuse of military benefits by ineligible people. DEERS planners believe the system will determine how many people in each community qualify for military health care and benefits; enable better estimates to be made on the number of doctors, nurses and technicians needed, and quickly verify the

individual's eligibility for military health care through telephone-computer links at either Monterey, Calif., or Alexandria, Va. Scheduled to be completed in the continental U.S. by September, DEERS is anticipated to involve nine to 12 million beneficiaries, all military medical and dental facilities, and the Civilian Health and Medical Program of the Uniformed Services. Active duty and retired service members are automatically enrolled in the DEERS program based on existing service records.

Dependent enrollments are the responsibility of the sponsor. Active duty sponsors will enroll their dependents at the military facilities where they work. Retired members should receive a letter from their parent service instructing them how to enroll their dependents in DEERS. Planners of the program hope to eventually include exchange and commissary privileges in the system, thus cutting down the number of people illegally using military benefits.

Foreign law imposes stiffer penalties

Drug users in the Philippines face stiffer sentences now that a revised Philippine Dangerous Drugs Act has become effective. The new law, which applies to service members, now requires a mandatory prison term for all who are convicted of any drug offense. In the past, service members have received probation in Philippine courts, but the new law will automatically place those service persons behind bars. The law carries a minimum

sentence of six years and a maximum of 12 years imprisonment for any amount, no matter how small, of marijuana. Possession of marijuana seeds, however, carries a separate sentence of 12 to 20 years. Possession or even use of regulated drugs, such as barbiturates, carries a 6- to 12-year penalty — and the law requires an individual who is arrested on drug charges to submit to a test of bodily fluids. Refusal only adds to the charges,

and can mean even more time behind bars. Maintenance of a residence in which drugs are used carries a 12- to 20-year sentence. What that means is if dope is smoked in someone's apartment, then that someone could spend a long time

in jail, even if that person didn't use drugs himself. There are heavier sentences for people convicted of selling drugs. The sale of marijuana will get a person 12 to 20, but if the sale is made to a minor, or if a person dies from the drug being sold, then it's life imprisonment or death.




FIT TO BE TIED

Send him sizzling signals in a seductive charmois suede-cloth play set, with beaded feathers and lace-up ties. S-M-L. Top \$22 Shorts \$17

frederick's
OF HOLLYWOOD

PEARLRIDGE SHOPPING CTR.



COUNTRY RADIO

TOP 10 COUNTRY SONGS

March 28, 1982

Last Week	This Week	Title	Artist
3	1	The Clown	Conway Twitty
1	2	Bobby Sue	The Oak Ridge Boys
4	3	Another Sleepless Night	Ann Murray
2	4	Big City	Merle Haggard
6	5	Through The Years	Kenny Rogers
7	6	Tennessee Rose	Emmylou Harris
10	7	Same Ole Me	George Jones
8	8	Be There For Me Baby	Johnny Lee
12	9	A Country Boy Can Survive	Hank Williams Jr.
11	10	I Lie	Loretta Lynn

Hear the top country songs in the nation on the Weekly Country Music Countdown Every Sunday Morning at 9 A.M. on KDEO Country Radio - AM 94!

SPECIAL

SERVICEMAN'S DISCOUNT

Are You Truly Fit?

Natural Man
HEALTH & FITNESS CENTER
in Kailua

is looking for
a few good Marines

Come Challenge
Natural Man's
"Circuit Training Program"

- Personalized Training
- Aerobic Exercise
- Group Exercise Classes
- Steam, Sauna, Whirlpool
- Outside Activities (Hiking, Running, etc. . .)

WORLD WIDE AFFILIATION
OVER 1500 CLUBS
Float Freeze On Memberships

CALL NOW
FOR FREE VISIT

1090 Keolu Dr.
Enchanted Lake
near 7-11

261-7905

M-F
6:30 am-9:00 pm
Sat. 9 am-5 pm



Two new ways to play it...



KOOL LIGHTS

LOW TAR - MINTHOL

New Kool Lights
There's only one low 'tar' with a sensation this refreshing. Kool Lights. The taste doesn't miss a beat.



KOOL ULTRA

ULTRA LOW TAR

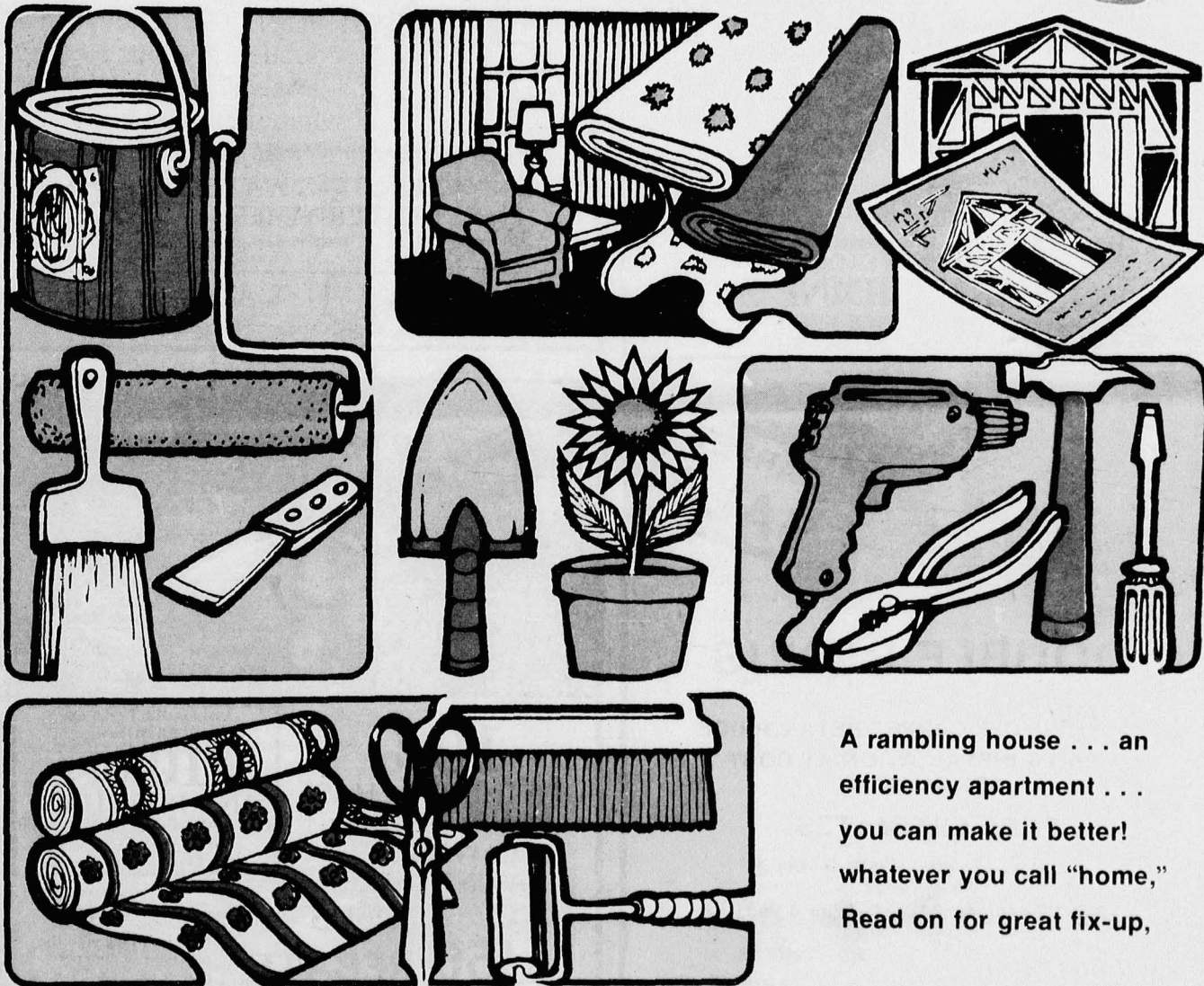
New Kool Ultra
One ultra has taste that outplays them all. New Kool Ultra. Even at 2 mg., you get the refreshing sensation of Kool.

Ultra Kings, 2 mg. "tar", 0.3 mg. nicotine; Lights Kings, 9 mg. "tar", 0.8 mg. nicotine av. per cigarette by FTC method.

Warning: The Surgeon General Has Determined That Cigarette Smoking Is Dangerous to Your Health.

The Hawaii Marine is an unofficial newspaper published every Wednesday by RFD Publications, Inc., 46-016 Aialoa St., Kaneohe, Hawaii 96744, in the interest of U.S. Marine corps personnel in Hawaii. All news copy is prepared in the Joint Public Affairs Office, Marine Corps Air Station, Kaneohe Bay, Hawaii 96863, 257-2179. Copy must be submitted no later than noon Thursday for the following Wednesday publication. Hawaii Marine solicits contributions of information and photographs from all Marine Corps organizations. However, it reserves the right to edit or rewrite material submitted. All advertising is arranged by the publisher, RFD Publications, Inc., telephone 235-5881. Circulation is 8,000. Everything advertised in this publication must be made available for purchase, use or patronage without regard to race, creed, color, national origin, age or sex of the purchaser, user or patron. A confirmed violation or rejection of this policy of equal opportunities by an advertiser will result in the refusal to print advertising from that source.

IT'S ALWAYS A GOOD TIME FOR **HOME IMPROVEMENTS** *and Gardening!*



A rambling house . . . an
efficiency apartment . . .
you can make it better!
whatever you call "home,"
Read on for great fix-up,

Roof warning signs

You can avoid expensive problems by knowing the early warning signs of a damaged roof.

Leaks, unseen moisture and seepage can rot roof boards and rafters, reduce the effectiveness of insulation, and ruin stored possessions if a damaged roof remains unrepaired.

Since most homeowners may never have had to replace a roof, they are frequently not as well informed as they could be about available materials, their characteristics and costs. Hasty or uninformed decisions could be

costly in the years to come.

Putting a roof over your head is no longer a simple matter of selecting a durable material at an affordable price.

The wide variety of colors, styles and textures currently available adds new dimensions to roofing selection which homeowners will want to consider.

A thorough examination of your roof will help you decide whether it is ready for retirement or simply in need of minor repairs.

Bare spots where

granules have worn off, shingles with broken or curled edges and missing tabs are all signs of roofing damage. Wooden shingles may be rotted, warped or split.

It may be a little more difficult to detect problems in the attic which are caused by water damage.

If there are any doubts about a roof's condition, it is advisable to call a reliable home improvement contractor. Most likely he will inspect your roof at no charge and prepare a cost estimate for

con't. on pg. 3

GRASSCLOTH WALL COVERING

1¢ SALE

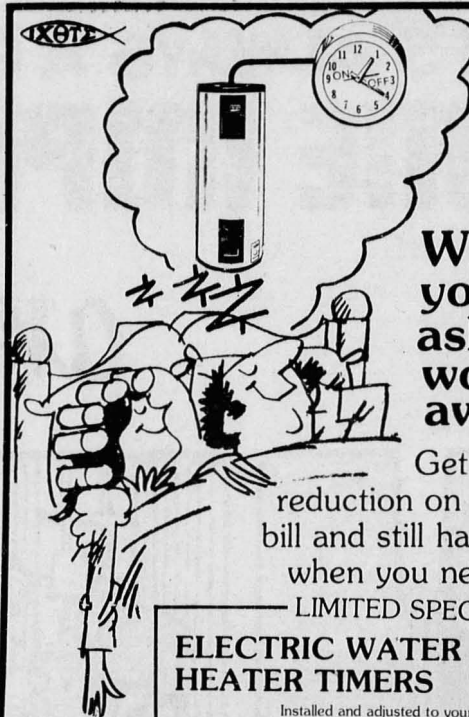
BUY ONE ROLL
AT REG. PRICE
GET 2ND ONE
FOR 1¢.

14 patterns to select from
ALL IN STOCK

CONSIDINE'S

AT KAILUA SQUARE
315 Uluniu St. 261-9818

OFFER
EXPIRES
4/30/82



**While
you're
asleep, at
work or
away . . .**

Get a noticeable
reduction on your electric
bill and still have hot water
when you need it.

LIMITED SPECIAL

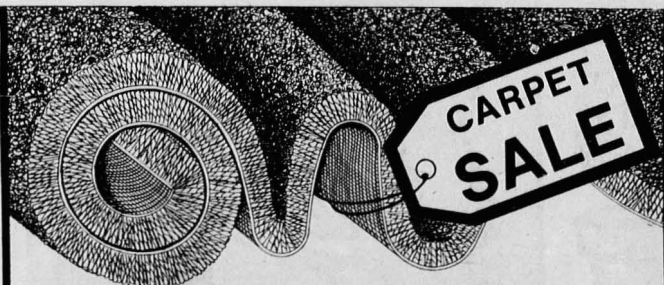
ELECTRIC WATER HEATER TIMERS \$5900

Installed and adjusted to your needs.
(Timer included)

PHONE
487-3305

GE License
#10205018

SATISFACTION
GUARANTEED



DOUBLE BONUS

*** 25% OFF CARPET RETAIL PRICE**
****PAD & INSTALLATION AT COST**
1ST QUALITY

FREE ESTIMATES

*SAVE \$423.75 on 100 yds. Carpet @
\$16.95 Retail

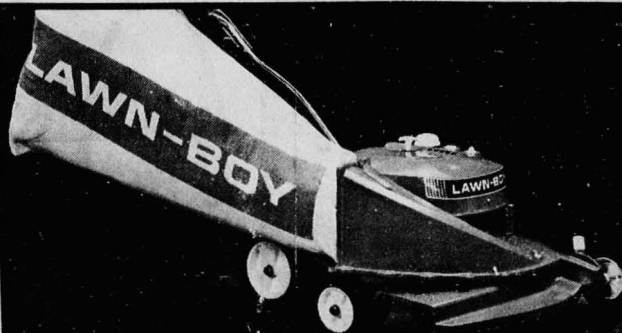
**SAVE another \$2.00/yd. (labor & pad)

Select from
HUNDREDS
of styles and colors in stock

Abbey Carpet

OFFER GOOD
THRU 4/16/82

177 Hamakua Dr.,
Kailua
261-9663 261-9852



10%
OFF THE PURCHASE
PRICE OF ANY
LAWNBOY
LAWNMOWER

- PLUS -

\$50 REBATE

VALUABLE COUPON
ADDITIONAL
\$10 OFF
ANY PURCHASE
OF A LAWNBOY LAWN MOWER
WITH THIS COUPON
Offer Expires April 30, 1982

from Lawnboy with the
purchase of commercial
mower sk. #'s 6259, 6300

SOUTH SHORE
LAWN MOWER OF HAWAII
156-D Hamakua Dr. 261-2600

Tight Mortgage monies brings surge in home remodeling

Homeowners today are anything but "on the move."

Tight mortgage monies, spiraling interest rates and rising inflation have caused them to take a second look at their homes. The result has led to a surge in home remodeling that the U.S. Census Bureau estimates will equal or exceed that of homebuilding expenditures this year.

According to John Hammon, executive vice

Signs of roof damage

con't. from pg. 2
repair or reroofing.

If it develops that your roof does need repair or replacement, asphalt shingles offer exceptional durability and fire resistance.

Asphalt has been used as a waterproofing agent for more than 5,000 years, and walls built with asphalt binder in ancient Babylon are still standing.

Today, high quality asphalt shingles manufactured in the United States are available in a wide range of weights, textures, colors and styles.

An organic felt or a fiberglass based mat is saturated with special asphalts and covered with a thick coat of rock granules that protect a shingle from its worst enemy, the sun.

Then, spots of adhesive are evenly spaced on each shingle. Set into sticking action by the sun, these thermoplastic dots seal down every shingle.

president of the National Home Improvement Council, "All signs indicate that remodeling, which has consistently been on the rise for the past 30 years, will continue to grow at a rate of approximately 15 percent in the next few years."

And, although the do-it-yourself segment of the remodeling market seems to be growing at a rapid rate, Hammon added that, "70.4 percent of the total market is still professionally installed remodeling."

But, if money is so tight, why are people willing to remodel?

One reason is the aging housing stock. Although there are more than 78 million homes and apartments in this country, at least half are

more than 17 years old. To maintain this aging housing stock, remodeling is essential.

Secondly, the growing concern for energy conservation, sparked by ever increasing utility and fuel costs, has motivated homeowners into updating their homes' energy efficiency through remodeling.

"The fact that re-insulation and replacement windows, storm doors and windows remain two of the most popular home improvement projects easily verifies this point," according to Hammon.

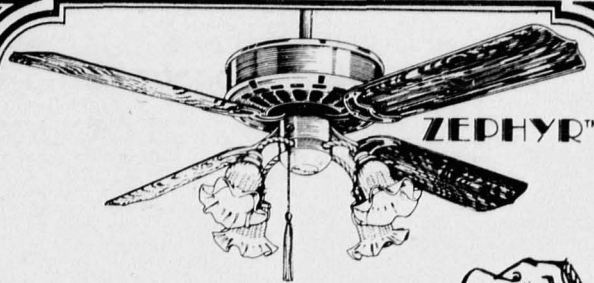
"And, since a house is probably the largest investment a family or individual is likely to make, remodeling is a way of investing in an investment," he added.

Lilly/Miller Potting Soil is preferred by professionals. It has superior



moisture retention, is pH balanced and pasteurized. If yours isn't, buy ours!

LILLY/MILLER
For all you need to grow...



RELAX, DAD!



The Casa Blanca Fan Company has made ceiling fan installation a breeze. You don't need an electrician nor do you have to be a mechanical wizard. A minimum time for installation . . . Plenty of time for relaxation.

OUR FANS ARE IDEAL FOR CONDOMINIUMS

SPECIAL PURCHASES!

40" BROWN 3-SPEED	\$79
48" BROWN 3-SPEED	\$99
48" WHITE 3-SPEED w/LIGHT	\$129
48" BROWN & ANTIQUE BRASS 3-SPEED REVERSIBLE w/LIGHT	\$149

LIMITED QUANTITIES
Sale Ends April 7, 1982

Two locations to serve you!

PACIFIC FAN SHOP

HONOLULU
800 S. Beretania St.
(above Sean Design-2nd floor-rear)

M-F 10 am-6 pm
Sat. 10 am-5 pm

PEARL CITY
450 Kam Hwy.
(between Zippy's and The Beef Up)

523-5136

(parking in rear of Kinau St. entrance)

488-7743

Ample Free Parking

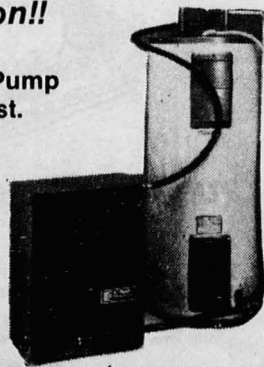
A Winning Combination!!

Your existing water heater
+ E-Tech Efficiency II Heat Pump
— 50% off your hot water cost.

HEAT PUMP ENERGY, LTD.

Call now for information
Phone: 235-6621

"Kula i Ka Makaukau"
"We strive for efficiency, too"



SPRING SPECIAL

For Sun Press readers, \$75.00 OFF On uninstalled unit. Offer expires 4/30 and does not apply to group rates. We will be giving a demonstration of the Heat Pump at Union Building Materials in Aiea Park, April 3, 10:00 a.m.-12:00 p.m.

Come see the savings on our Heat Pump!

Basic points on selecting contractor

A wise consumer takes the guesswork out of shopping by knowing what to look for.

When it comes to shopping for a capable and reliable remodeling contractor, a wise homeowner does the same.

Because your home is probably the largest investment you'll ever make, you should take as much care in selecting the contractor as you do in planning the remodeling.

Know what to look for and what to avoid. In the long run it will mean savings in time, worry and — above all — money.

Beware of a contractor touting a "bargain." His low bid could be either a result of low-quality building materials or the addition of "extra" costs once the job is underway.

Avoid someone who moonlights as a contractor. A person who does remodeling "on the side" may be less expensive, but he may also be less professional and able.

To eliminate the guesswork in selecting a professional remodeling contractor, the National Home Improvement Council offers the following suggestions:

• Since professional contractors have estab-

lished their reputations on satisfied customers and longevity in business, one of the best sources of information could be word of mouth.

Ask friends and neighbors who've recently completed a remodeling project. They should be an excellent source for leads and you'll be able to inspect the work that was done.

• If you've hired an architect or designer to plan your home improvement, ask them for the names of several contrac-

tors. Lumber dealers, home centers and hardware stores may also be good sources.

• Once you've compiled a list of prospective contractors, check their references with local building or planning departments, the Chamber of Commerce and the Better Business Bureau.

Reputable contractors should be willing to provide you with references. Those who hesitate probably have something to hide.

con't. on pg. 8

15¢ GALLON

Build you own LEGAL Solar powered still for under \$80.00. Make your own alcohol fuel out of easy to get materials: sugar cane, corn, etc. For simple plans, construction notes, material list and federal license information send \$10.00 to:

ALBA FUELS UNLIMITED
P.O. BOX 22478
HONOLULU, HI 96822

Beautify
your home
with one of
these exotic
woods.



Lumber

Aformosia
Angico
Apitong
Ash
Balau
Balsa
Beech
Birch
Bubinga
Cedar
Cherry
Damar

Hickory
Iroko
Ironbark
Jelutong
Koa
Mahogany
Mansonia
Maple
Oak
Obeche
Pau Ferro
Pine

Plywood

Poplar
Purpleheart
Rosewood
Sepetr
Shedua
Spruce
Teak
Vermillion
Wainut
Wenge
Willow
Zebrawood

Particle Board
Marine Plywood
Birch
Fir
Koa
Mahogany
Oak
Rosewood
Teak
Walnut

HARDWOOD LUMBER
2620 Waiwai Lp. **PH. 836-3757**

SUNNY MONEY FROM GRUMMAN

**YOU COULD SAVE UP TO 80%
ON HOT WATER FUEL COSTS WITH
A GRUMMAN SUNSTREAM SOLAR SYSTEM.***



GrummanSunstream®

*SAVINGS VARY DEPENDING UPON HOME LOCATION, HOT WATER USAGE, AND SYSTEM SIZE.
SEE YOUR GRUMMAN SUNSTREAM DEALER FOR YOUR ESTIMATED SAVINGS.

Authorized Dealer

**CENTRAL PACIFIC
SOLAR**

A Division of Central Pacific Ecology Resources, Inc.

DECK PENTHOUSE
1221 KAPIOLANI BLVD.

HONOLULU, HI 96814
LIC. C-9335

521-2391

Do-it-yourself wooden planters

There are probably as many shapes and sizes of planters as there are species of flowers. Building the special outdoor planter that's perfect for your needs is easy and fun. The plans shown here can help you get started.

Building basics
There are also some building basics to keep in mind. Planters should be sturdy enough to hold up outdoors, and tightly constructed so that excess moisture will seep through drainage holes and not joints. It is most important to protect the wood from

soil contact hazards. A solid choice for almost any outdoor building project is pressure treated lumber.
Pressure treated lumber resists insects and decay with minimum maintenance. It is also economical, easy to work with, and can be stained, painted or left to weather naturally.
Protect planter
If using redwood, cedar or another species of wood, it's a good idea to protect the planter by lining the inside with a sheet of plastic or painting soil contact areas with asphaltum.

You can improve the durability of your planter by using a waterproof glue in the joints, along with galvanized nails. For the best job, make all cuts carefully.
Use the right glue, reinforce with proper fasteners, then seal inside joint lines with a caulking compound.
Good drainage is important, too. Excess moisture can damage your plants. To provide drainage, drill 3/8" or 1/2" holes through the bottom of the planter, spaced 5" to

con't. on pg. 7

...sell it in Classified and inflate your money supply!

Bicycle pumps, baby strollers, various toys and equipment, all are remnants of a treasured childhood. But now they are taking up space around the premises. The smart way to clean out and clean up is to advertise these articles in Classified. Call us, and we'll help you compose a sure-fire selling message.
622-3966
or 235-5881
Classified Advertising

PRE SEASON POOL CARE \$39.95.

Let Blue Champagne put sparkle back into your pool. Here is what we will do. 1. Thoroughly test water chemistry. 2. Scrub tile. 3. Thoroughly clean pool. 4. Remove all algae from pool. 5. Treat pool w/algaeicide to retard the return of algae. 6. Service filter includes complete disassembly of filter (when filter design allows it), lube all o-rings and backwash valves. 7. Inspect pool recirculating equipment for possible trouble areas and give instruction on what has to be done & how much it will cost to remedy problem. So if you really want your summer to get off to a good start, give Blue Champagne a call today at **395-7666**



COUPON

LAWNS INC.

LANDSCAPE MAINTENANCE

P.O. Box 7168 • Honolulu, Hawaii 96821 • PHONE: 677-4216

"Specializing In Complete Lawn Care"

Does your lawn have: Compacted Soil, Spongy or Thick Texture Weeds, Browning Patches, An Unhealthy Appearance Insect Problems Or Drainage Problems???

THEN YOU NEED US!!!

CALL NOW FOR FREE ESTIMATE

677-4216

20% OFF AERATING VERTI-CUTTING

OFFER EXPIRES 4/30/82

<div>COUPON</div> <div> <div>\$1.00 OFF each single roll Wallpaper</div> </div>	<div>COUPON</div> <div> <div>1¢ Sale grasscloth wallpaper sale. Buy 1 single roll at \$29.95, get 2nd single roll for 1¢.</div> </div>
<div>COUPON</div> <div> <div>\$2.00 OFF each sq. yard GAFSTAR Sheet vinyl flooring</div> </div>	<div>COUPON</div> <div> <div>25% OFF Draperies mini & verticle blinds, woven woods, Nettle Creek Bedsprads</div> </div>
<div>COUPON</div> <div> <div>\$3.00 OFF each sq. yard Carpet</div> </div>	<div>COUPON</div> <div> <div>walls, windows & floors</div> <div>finest in home decorating across from city mill</div> </div>

UNIVERSAL

exterior VINYL ACRYLIC HOUSE PAINT

exceptional quality

UNIVERSAL

exterior ALKYD HOUSE & TRIM PAINT

exceptional quality

UNIVERSAL

exterior ACRYLIC STAIN

exceptional quality

UNIVERSAL

interior LATEX FLAT WALL

exceptional quality

UNIVERSAL

interior SATIN ENAMEL

exceptional quality

UNIVERSAL PAINT

HOME DECORATING CENTERS

WHAT-A-BARGAIN

EVERY ITEM SOLD CARRIES UNIVERSAL PAINTS UNCONDITIONAL MONEY-BACK GUARANTEE

COMPARE OUR EVERYDAY LOW PRICES

ALKYD HOUSE & TRIM

FEATURING:

Gloss Finish

Extreme Durability

Fade Resistant

Mildew Resistant

REG. 19.99

15²⁵

ACRYLIC STAIN SOLID COLOR

FEATURING

Matte Finish

Non-Settling

1/2 Hour Dry

Mildew Resistant

Blister Proof

Water Clean Up

REG. 13.99

8⁷⁵

INTERIOR LATEX FLAT

REG. 15.99 GAL.

9⁹⁹

ACRYLIC HOUSE & TRIM

FEATURING:

One Coat Hide

3-Year Durability

3-Year Colorfast

3-Year Fade Resistant

3-Year Mildew Resistant

REG. 19.99

13²⁵

INTERIOR/EXTERIOR LATEX FLAT WALL

REG. 8.89

5⁸⁹

INTERIOR SATIN ENAMEL

REG. 19.99 GAL.

12⁹⁹

BUY DIRECT & SAVE

FRESH UP YOUR HOME WITH GOOD QUALITY PRODUCTS FROM PAINT UNIVERSAL WE COLOR MATCH

FEATURING:

OUR 5-WAY WARRANTY

One-Coat Hide

5-Year Washability

5-Year Durability

5-Year Colorfast

5-Year Spot Resistant

MAIN BRANCH—1409 COLBURN—PH. 847-5744

AIEA BRANCH—98-023 HEKAHA—PH. 487-8739

TWO LOCATIONS TO SERVE YOU

STORE HOURS:

MON.-FRI. 7:30 AM-4:30 PM

SAT. 7:30 AM-12:00 NOON

CLOSED ON SUNDAYS

Tab-5

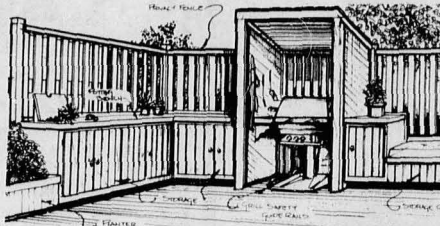
Island living with economical decks . . .

Need more living space but can't afford a room addition right now? Or do you need a new place for the children to play, since the spare bedroom isn't spare anymore?

Decks can be an economical way to have the space you need. These sketches show an overall concept of how separate decks can perform specific

functions, while at the same time fit into an eye-pleasing plan.

There's a central 12x14-foot deck for barbecue equipment and gardening tools, with plenty of floor space for guests; a trellis deck; a deck just for sunbathing; and a children's deck that you can clean up quickly and use for extra entertaining



space. Features in these decks may spark ideas you'd like to suggest to the professional remodeler you select to do the construction.

Here are some tips to keep your project in budget:

- Have one deck built per year, instead of an entire system. Or build into one deck the features that best

suit your needs.

- Designs like these that make use of stock lumber can cut your costs. Your professional remodeler won't waste time cutting, and scrap lumber will be minimal.

- Check local ordinances for restrictions on decks — it could save you money on alterations in the future if you should sell your house.



LANDSCAPING HOKUAHI LAWNS, INC.

WE SPECIALIZE IN

New Lawn Installation & Lawn Renovation
Commercial Property Maintenance
Design & Installation of Sprinkler Systems
98-025 HEKAHA ST., AIEA 488-7047



IT'S TIME TO FIX-UP FOR SPRING

Aurora Glass will give your home a bright new look!

We're Offering Special Low Prices On
Custom-Cut Glass Table Tops
QUANTITIES ARE LIMITED

Bring in the exact dimensions on the table top you need and we'll cut it to your order. Protect the expensive finish of your tables and desks with Aurora Custom-Cut plate glass tops, no more burns and scratches to worry about!

Double Your Home's Beauty With Aurora Mirrors

Aurora will custom-cut a top quality plate glass mirror to fit any space or any place in your home. You'll double the beauty and create a feeling of more space by reflecting your rooms with Aurora mirrors.

Glass To Fit Every Opening

Jalousies, windows and sliding glass doors custom made to fit every need and every opening. **BRING IN THIS AD FOR A 15% DISCOUNT.** You'll save money and get top quality at Aurora Glass Hawaii.

ANY SIZE CUSTOM AQUARIUMS
BUILT TO SUIT YOUR REQUIREMENTS

Let The Light In -- Keep The Heat Out! With Double Layer Plastic Dome Skylights

Two layers of protective plastic in these superior quality skylights keep the heat outside while they let the light in to brighten your home. Limited quantities in a variety of sizes available. Several combinations of clear, opaque white and bronze domes presently in stock. Prices range from \$30 to \$120, depending on size. For best selection, come in now!

FINANCING AVAILABLE*
ALL PRICES ARE F.O.B. AIEA WAREHOUSE

AURORA GLASS HAWAII, INC.

98-790 Moanalua Rd.
AIEA

487-2486

Lic. #C-8321

*on approved credit.



HANDYMAN

SALE EFFECTIVE THRU APRIL 7th, 1982

TEMPLE VALLEY

MON.-SAT. 9-5
SUNDAY 9:30-2:30

PH. 239-6695

HAWAII KAI

M-W 9:00-7:30 • T/F 9-9
SAT. 9-5 • SUN. 9-4

PH. 395-1212

KAHALA

MON.-FRI. 8-9
SAT. 9-6 • SUN. 8-4

PH. 732-1944

**FREE
SILVER
DOLLARS**



FOR ANY \$10 PURCHASE \$100 SILVER DOLLAR
YOU GET
FOR ANY \$20 PURCHASE \$200 SILVER DOLLARS
YOU GET
FOR ANY \$30 PURCHASE \$300 SILVER DOLLARS
YOU GET

OFFER GOOD WHILE SUPPLY LASTS

... BUT WE WILL HONOR WITH DOLLAR BILLS THEREAFTER
OFFER GOOD AT ALL HANDYMAN STORES—SALE ITEMS INCL.



HANDYMAN RENTAL

• KOKO MARINA 395-1212
• TEMPLE VALLEY 239-6695
• KAHALA STORE 732-1944



WE NOW SERVICE & REPAIR SMALL ENGINES

• CHAIN SAWS • LAWN MOWERS
• WEED EATERS • VARIOUS OTHER ITEMS

Wooden planters

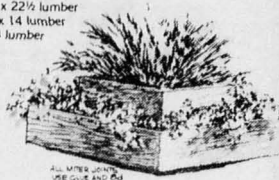
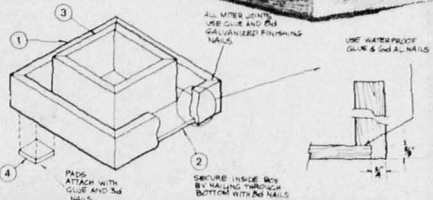
con't. from pg. 5

6" apart.
Cover the holes with some pieces of aluminum or copper insect screen so soil won't fall through the bottom. If a plastic liner is used, drill the holes before placing the liner. Then slit the plastic over each hole before placing the screen. Place a layer of small stones in the bottom of the planter before filling with soil. This provides even better drainage. And don't completely fill the planter with soil.

Allow about 1" of space from the top of the soil to the top of the planter.

TIERED PLANTER
Materials List

- 1 4 pcs. 1 1/2 x 6 x 24 lumber
- 2 1 pc. 3/4 x 22 1/2 x 22 1/2 lumber
- 3 4 pcs. 1 1/2 x 10 x 14 lumber
- 4 4 pcs. 3/4 x 4 x 4 lumber



CARPET CLEANED

\$29⁹⁵

THIS WEEK ONLY
any living room and
hall (regardless of size)

ADDITIONAL ROOMS \$19.95 ea.

CARPET DYEING can be done right in your home, and the results are fantastic! We will also TINT your carpet while it is being cleaned at slight additional charge. You will be amazed at the appearance!

CALL NOW
FOR
APPOINTMENT

395-8027

NOT
DELIGHTED,
DON'T PAY



RAINBOW CARPET DYEING
& CLEANING CO.

703 Ahukini Street

- Driveways
- Lanai Decks
- Carport Slabs



ON SALE!

Ameron HC&D—for as little as \$1,995—
will help you get:

A recommended, licensed contractor to level
the ground, build the forms, pour the concrete,
and finish it on any site accessible to
our trucks . . .

A BIG, BIG, BIG SAVING TO DO IT NOW!

Call Ameron HC&D today at 841-0911.

Ameron
HC&D

811 Middle Street

Call today for a FREE ESTIMATE.

We'll leave a lasting impression!

TILES
TILES
TILES

STORE HOURS
Monday-Friday
7:30 A.M.-4:30 P.M.
Saturday
8:00 A.M.-12 Noon

Ceramic Tile
Sheet Vinyl
Hardwood Flooring

PRICES LIMITED TO IN STOCK MERCHANDISE ONLY

TYPE	SIZE	REG.	SALE
Italian Tile	8x8	\$3.70	\$2.89 \$2.35
Italian Tile	12x12	4.35	3.05 2.75
International	8x8	3.52	2.82 2.55
American Ceramics	4x8	3.29	2.83 2.40

WOOD FLOORING

Pre-Finished	12x12	\$2.46	\$1.85 \$1.70
Pre-Standard	12x12	2.20	1.65 1.50

(full cartons only)

BETTER HURRY . . .

SUBJECT TO PRIOR SALE



Prohala	Mokuaea	Kalihi	Dillingham
			Nimitz

Hawaii Pacific Sales

HAWAII PACIFIC
120 MOKAUEA ST.
845-9581
SALES

Paint rejuvenates siding

Many homeowners are facing springtime with aging aluminum siding that they would like to make fresh and new-looking again. You can repaint aluminum siding yourself with beautiful, money-saving results. You can even give it a new color scheme. Here are suggestions for repainting aluminum siding.

First be sure you're using the paint that is best suited to the job. One paint

manufacturer has developed a 100-percent latex paint particularly good for aluminum siding. Latex paint coats and protects your siding without a heavy, smothering film.

How much paint?

To figure the amount of paint you'll need, measure the distance around your house and multiply by the average height. Subtract about 10 percent for windows and doors. That's the approximate

number of square feet to be painted. Divide this figure by the square-foot coverage shown on the paint-can label to get the number of gallons you'll need.

The most enjoyable part of painting is choosing your new paint colors. First, make sure the color you choose is resistant to fading. Then look at the "unchangeable" factors, such as the color of your roof and the neighboring houses.

Light colors will make a house appear larger. Contrasting color for trim is eye-catching, but "cluttered" features should be painted the same color as the siding. Very bright colors should be reserved for small accents, such as window boxes, shutters and the main entrance. The days of the traditional white house are long gone, and sky's the limit with the beautiful array of paint colors available.

Prepare the surface

Good surface preparation is vital. When homeowners get unsatisfactory results from their paint jobs, the fault is rarely with the paint, but with improperly prepared surfaces.

"Why should I read my Sun Press newspaper? I can't even find time to read the dailies!"



We know the feeling. In order to really read the Honolulu dailies, you have to block out an hour or so and really have at it. And a lot of people — probably you're among them — just don't have the time.

So, you rely on radio and TV for your news bulletins from around the world. That's O.K.... but the only place you can read news and views about your community is in your community Sun Press newspaper.

You'll find mostly local merchants and services advertising in our pages, and the people you find in your Sun Press newspaper are the people you find in your community. Handy. Ready to help.

So if the thought crosses your mind: why should I read the Sun Press — those are just a couple of the reasons. It's your community newspaper. It gets you where you live!

Helpful Contractor Selection

con't. from pg. 4

•Another good source is local chapters of professional contractors' associations. The National Home Improvement Council, for example, is comprised of more than 3,000 professionals nationwide. Contractors belonging to NHIC pledge to observe the "highest standards of integrity, frankness and responsibility in dealing with the public."

•Before you decide on any one contractor, request preliminary bids

from a few likely candidates. Make sure, however, that all are bidding on the same job — specify the materials to be used, labor requirements, the time it will take to complete the project, and other pertinent factors.

•After you've settled on a specific contractor, be sure a contract agreement is signed before work begins. The contract should be specific and to the point. If you don't fully understand the contract, don't hesitate to show it to your lawyer.

SUPERBATH

A Division of Hawaii Pipe and Supply



InfinityBath™

Whirlpool Tub For Two. 60" x 42" x 20" deep. Available in a wide variety of Kohler colors.

"We Feature"

THE
BOLD LOOK
OF KOHLER

Once upon a time bathrooms were small, bathtubs were white, and bathing was a Spartan ritual. Times have changed.

Today, bathrooms are showplaces and bathtubs are colorful and deep and designed for enjoyable whirlpool bathing and luxurious stretch-out soaking baths.

To help make your new bathroom or kitchen a reflection of your lifestyle, Kohler makes bathtubs, lavatories, toilets and kitchen sinks in a variety of designs and 18 beautiful colors... one or more of which will match your individual decor... and they are available for you to see at SUPERBATH or our other showroom locations.

**KOKO MARINA SHOPPING CENTER
WATERFRONT VILLAGE - 2nd FLOOR**

PHONE: 395-4481

SHOWROOM HOURS

SUPERBATH

Div. of Hawaii Pipe & Supply
Koko Marina Shopping Center
Mon.-Fri. 9:5 a.m.
Saturday: 10:2 a.m.

HAWAII PIPE & SUPPLY

Main Office: 847-4851
290 Sand Island Access Rd.
Mon.-Fri. 7:5 p.m.
Saturday: 8-12 Noon

HAWAII PIPE & SUPPLY

Hilo Branch: 935-9376
500-A Kalaniana'ole Ave.
Mon.-Fri. 7:5 p.m.
Saturday: 8-12 Noon

OTHER HOURS BY APPOINTMENT



FILLING THE GAPS — Arellano Arturo (left) and Oswaldo Gusman of Eddie's Construction Incorporation, use a concrete sawing machine to remove residue from spaces in the concrete slabs on the Air Station's runway. Once the residue is removed, the spaces are then filled with polyethylene foam, followed by a polyurethane joint sealant and allowed to cure, which normally takes 48 hours.

According to Lieutenant Commander Robert Evans, resident officer in charge of construction, Facilities Department, the repairs are performed to keep water from seeping between the spaces, and to prevent foreign object damage problems. It also allows for concrete expansion. LCDR Evans said the repairs should last for a few years. (Photo by Sgt Pepper Davis)

At a glance

Post office closure

Unit Post Office 1, Building 1090, will be closed from April 12 through 23 due to operational commitments. It will reopen April 26 at 8 a.m. Postal transactions can be performed at the Main Post Office, Building 835, during Unit Post Office 1's closure.

Primary elections

Nine states will hold

primary elections in May to elect candidates who will appear on the ballot of the Nov. 2, 1982 general election. Those states are: Arkansas, Idaho, Indiana, Kentucky, Nebraska, North Carolina, Oregon, Pennsylvania and Texas.

Individuals claiming residency in any of these states and desiring to vote should complete a Federal

Post Card Application and forward it to the appropriate voting jurisdiction.

Except for Idaho, each of the above states will hold its primary by party. Voters must indicate their party affiliation in item eight of the application. Failure to complete this item may cause the ballot request not to be processed. Voters in Idaho do not have to

provide their political party affiliation

For more information, see your activity voting assistance officer or counselor.

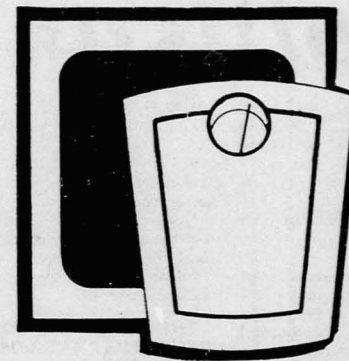
Preschool Extravaganza

A Preschool "Extravaganza" for children 2 to 4, is scheduled for Saturday at 10 a.m. The event will be held in the Family Theater, and will offer a free

movie and mini preschool experience for parents and children interested in enrolling in the Menhune Rainbow Preschool this fall.

As a reminder, Preschool registration will be held the week of April 5 at the Preschool from 10 a.m. until 1 p.m. For age requirements and more information, call the Preschool at 257-2253.

WIN AT LOSING!



WEIGHT MANAGEMENT

Few people know what is the best weight for them, let alone how to achieve and maintain it. Castle's Weight Management program is an eight session course designed to help you reach your optimal weight through proper nutrition, moderate exercise, and modification of behavior.

Each session will begin with a "weigh-in," followed by a period of moderate exercise. A tasty, low calorie dinner will be prepared for you at each class meeting.

This program is taught by health professionals including; Physicians, health educators, dietitians, physical therapists and psychologists.

- Nutritional Information
- Behavior Modification
- Exercise

Beneficial

The plasma in your blood can

The other tax service.

We know 500 ways to reduce taxes.

And help you get your share of the new tax cuts

Out-of-state tax returns, second income, travel expenses, non-taxed allowances... Beneficial tax preparers are in step with all the special requirements of military tax returns.

This year, switch to Beneficial Income Tax Service. Our Full Deductions Checklist shows more than 500 deductions, credits and exclusions provided by IRS. Beneficial tax preparers dig for every break military filers are entitled to and check for the new tax cuts, too. No appointment necessary.

Come in for your free Full Deductions Checklist.

Beneficial Income Tax Service

Special service for service personnel. Most offices open evenings and Saturdays. HONOLULU — (5 offices)

- 36 N. King Street..... 533-4202
 - 1451 S. Beretania Street..... 941-7702
 - 3427 Waiālae Ave..... 734-1947
 - 1947 N. King Street..... 841-3671
 - 1283 Kapiolani Blvd..... 536-3565
- See Telephone White Pages for other offices in area.

EARN UP TO \$85 PER MONTH
You possess a precious commodity — plasma. Hemophiliacs, burn and shock victims need plasma. Donors are needed. You can help and also earn cash by your donations. Come in soon and find out how you can help.

Alpha

PLASMA CENTERS
3179 KOAPAKA
BEHIND AIRPORT
RAMADA INN
Ph. 836-0647



ORTHOPEDIC ORTHODONTICS



Some orthodontic cases can be treated with nighttime appliances, so that the child can grow out of his orthodontic problems. Children 9 thru 13 yrs. old are ideal ages.

Kailua Professional Ctr.
Suite 503

WINDWARD DENTAL GROUP INC.
Lee Hardy, D.D.S. 261-4694

FAMILY CHIROPRACTIC CENTER



Dr. Lawrence J. Connors, M.A., D.C.

- Headache
- Nervousness
- Neck Pain
- Shoulder-Arm Pain
- Bursitis
- Arthritis
- Backache
- "Pinched Nerves"
- Numbness in Hands or Feet

X-RAY FACILITIES
WORKER'S COMPENSATION
INSURANCE
HEALTH LECTURES

1ST & 3RD SAT. 9:30 A.M.

No Charge For Consultation

CHIROPRACTIC... THE NATURAL
SOLUTION TO HEALTH PROBLEMS

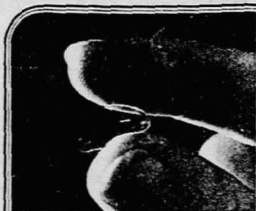
KANE OHE BUSINESS &
PROFESSIONAL CENTER

46-005 Kawa St., Suite 201

235-6677

SOFT CONTACT LENSES ARE:

- Soft, flexible and comfortable
- Easy to wear from the start
- Do not pop out easily



SOFT CONTACT LENSES

\$95

includes standard soft contact lenses, care kit, follow-up care by Dr. Dean and 90 DAY TRIAL PERIOD.

Effective until 3/31/82



Also Available • Soft Contact Lenses for Astigmatism and Continuous Wear
• One Day Service for Glasses and Hard Contact Lenses • Immediate Service for Soft Contact Lenses

ONE YEAR GUARANTEE ON ALL GLASSES
COMPLETE PROFESSIONAL VISION SERVICES

DEDICATED TO QUALITY AND SERVICE IN VISION CARE

Dr. Charles Dean
Optometrist

KAILUA
139 Hekili St.
261-9735



- Low Fat Recipes
- Computerized Body Composition Analysis (Your % of body fat)
- Tasty dinner at each session

**STARTS WEDNESDAY,
APRIL 7TH
7-9 P.M.
\$55.00**

(Includes course syllabus, 8 sessions,
8 meals and 2 follow-up sessions)
Held in Hospital Auditorium

RESERVATIONS REQUIRED

**261-0841
EXT. 287**

**"YOU HAVE A FRIEND
IN THE HOSPITAL"**

CASTLE MEMORIAL HOSPITAL



**Community Health
Education Centers
Kailua-Kaneohe**

EDITORIAL/OPINION

Pot, pills and parents

EDITOR'S NOTE: The following information is from the University of Texas Medical Branch's newsletter "University Medical" in Galveston, Texas.)

WHY ARE SO MANY TEENAGERS TRYING DRUGS

Adolescents try using substances for various reasons just like adults do. Adolescence is a difficult time. Teen-agers are commonly upset by the normal changes in their bodies and emotions. Teenagers think that because they are no longer "children" they can try everything they have been waiting for.

Marijuana seems to be their prime recreational drug, like alcohol is for many adults. Also, from economic necessity, both parents are working outside the home in more than 50 percent of families with children. When the parents come home, they want to collapse — there is simply less time and energy to tend to the needs of children. Today more young people are left alone to tend for themselves.

HOW CAN PARENTS KNOW IF THEIR CHILDREN ARE USING DRUGS?

It is important for parents to keep their eyes and ears open and be aware. There are clues from the children's behavior. There are two booklets that are recommended reading for parents: "Adolescent Development: A Life Span Perspective," by Richard Lerner and Graham B. Spanier, offers ideas of what is normal behavior for adolescents; and "For Parents Only," a booklet on marijuana written for parents, that parents can give their children; and "This Side Up," a booklet for children on substance use and abuse.

These booklets are available free from the National Institute of Drug Abuse, office of communications and public affairs, 5600 Fisher Lane, Rockville, MD 21857.

TALKING ABOUT DRUGS: Good two-way communication is essential in talking with children about drug dangers in an atmosphere in which children feel accepted by the parents and can make comments or ask questions without fear of condemnation or punishment.

If a parent is so violently opposed to drugs that a child feels he can't talk, the child will not talk.

- Become informed on drug use and drug dangers so you will have a realistic view.

- Share these facts with your children in a matter-of-fact way, being honest and being ready to listen.

- Set reasonable limits for your children within your control and enforce those limits consistently.

- Encourage positive activities for your children.

THE FOLLOWING IS A LIST OF DRUGS THAT ARE MOST COMMONLY MISUSED.

Narcotics, depressants (sedatives), stimulants, tobacco, alcohol, marijuana, inhalants, hallucinogens, phenylcyclidine.

ALCOHOL: Estimates show that about 10 million people are dependent on this drug. It is the number 1 drug of abuse in this country.

MARIJUANA: A common plant (biological name is *Cannabis sativa*) which is called "grass" or "pot" or "weed." The mild effects of smoking marijuana include a temporary euphoria often combined with a feeling of relaxation. Marijuana can distort perception, weaken critical judgment and interfere with the ability to concentrate. Scientific evidence indicated that marijuana's effects on the body are at least as harmful as alcohol and tobacco.

NARCOTICS: These are drugs that relieve pain and often induce sleep. These are narcotics derived from opium (the opiates) and synthetic narcotics with similar action. These include heroin, morphine, methadone, codeine, neparadine, demerol and darvon. Individuals can develop physical dependence on narcotics and when the drug is withheld, can cause withdrawal symptoms (shaking, sweating, vomiting, chills, abdominal pains, diarrhea). The most commonly abused narcotic is heroin, also called "junk" and "smack." It accounts for 90 percent of narcotic abuse in the U.S. according to DHHS statistics.

STIMULANTS: Stimulants do what their name implies: They stimulate the central nervous system producing alertness and activity. They include amphetamines, cocaine and caffeine. They're also called "uppers."

commonly inhaled as a powder through the nose. It produces a euphoric feeling. Regular and/or high dose can have an effect ranging from irritation to the nostril and nasal membrane to cocaine psychosis characterized by hallucinations and paranoid fears. While evidence does not support the notion that cocaine produces a physical dependence, psychological dependence may result.

DEPRESSANTS (also called sedatives): These depress the central nervous system. They're also known as tranquilizers and sleeping pills. The most popular slang term is "downers." All sedatives can produce a physical dependence and are addictive. Barbiturates ("reds" or "barbs") withdrawal can be more severe than heroine withdrawal. The most commonly abused non-barbiturate drugs are methaqualone (quaalude), glutethimide (doriden), and meprobamate (miltown). According to DHHS, barbiturates overdose accounts for nearly one-third of all reported drug-induced deaths in the U.S. Taken together, alcohol and sedatives can be fatal.

HALLUCINOGENS: Also called psychodelics, affect perception sensation, thinking, self-awareness and emotions. Changes in perception of time and space delusion and hallucinations can occur. LSD, a synthetic hallucinogen, is potent and also the best studied.

WHEN TO CALL FOR HELP: The classic symptoms of youthful drug abuse include change in attitude, mood swings, secretiveness, change in friends, isolationism, financial problems, loss of interest in school & other responsibilities and actual possession of unauthorized drugs or drug-related equipment. Parents should be concerned but not panic at the suggestion of drug abuse — It helps if the parent and child have a good rapport and can talk. If a parent needs more help in sorting things out, it's good to get in touch with someone you trust — someone to help evaluate the situation. It could be a clergyman, relative, social worker, or school counselor, close friend or family friend. From there can come referrals to a mental health clinic, psychiatrist or other specialist as needed.

Parents in Hawaii who believe their child has a drug problem or who wish to seek counseling should contact the Child & Family Service Ph. 521-2377 (200 N. ...)

Please Hold!



Marine suffers recurring nightmare

by LCpl Todd Ramsburg

I have an incredible fear of a little red button located on most office phones ... it's called HOLD.

At least once a week, I have this recurring nightmare in which I am put on terminal HOLD. As the drama unfolds, I'm locked in the top story of a burning skyscraper. (Believe it or not, I never saw the "Towering Inferno.") Anyway, the fire slowly creeps up, story by story, as I frantically call the fire department.

A DEEP, STRONG, REASSURING voice promptly answers and says, "All lines are busy now, please HOLD and our operator will be with you momentarily."

Then comes the Muzak ... how I hate that Muzak. As the musical drone continues, the fire inches closer and closer to the top. The sweat is now running down my face in tiny rivers as the last strains of "The Girl From Ipanema" die out. I think the reason I haven't panicked by this time is that I'm basically an optimist. The calm, reassuring voice helps by returning once every five minutes to remind me I'm not forgotten and that their operator will be with me momentarily.

Keeping the receiver glued to my ear, I begin scanning the room for long curtains, tablecloths, anything to shorten my inevitable fall by a few feet. So much for optimism.

As I unconsciously tap my feet to "Do You Know The Way To San Jose," I try to think back to the days of my high school physics lab. The particular lecture I'm searching for dealt with terminal velocity of falling objects. If I jumped through the window, which would hit first, me or the broken glass?

The flames are now licking underneath the door, and my faith in the fire department is fading fast. Suddenly,

images of Christmas' past flash through my mind.

"CHESTNUTS ROASTING ON an open fire, Jack Frost nipping at your nose." (You're supposed to have flashbacks when faced with certain death.)

"Hello, may I help you?" asked a voice that didn't sound like a tape recorder.

"Yes, yes! I'm trapped on top of a burning building and I don't think I have much time left!" I excitedly replied.

"You're talking fire, right?" the voice questioned.

"Yes, yes!" I yelled.

"Well this is Search and Rescue, please hold."

The yellow plastic Princess phone began to melt through my fingers as Percy Faith serenaded me with his version of "Here Comes The Sun."

The smell of burning acrylic carpet is beginning to give me a terrible headache. I quickly reach for a rather large paperweight and heave it at the window. Ahhh ... the miracles of modern science ... plexiglass. If Bob Gibson couldn't shatter it with 100 fastballs, you can imagine what my paperweight did.

As usual, my alarm clock arrives before the fire department to rescue me from the Ray Conniff Singers and almost certain disaster. How I hate waking up in a cold sweat. Before I can completely regain my composure, the phone rings.

"Hello," I said as I wiped the cobwebs off my face.

"YES HAWAII, we have a long-distance phone call from a Mrs. Ramsburg, will you accept the charges?" asked the operator.

"Yes, put her on!" I said.

"Thank you, please HOLD," was the response.

Now I only have one question: "Who's the wise guy?"

accepted by the parents and can make comments or ask questions without fear of condemnation or punishment.

If a parent is so violently opposed to drugs that a child feels he can't talk, there's a good chance he is going to sneak off and try things. It is most important for parents to listen and not to overreact.

Also, the encouragement of positive activities — the band, clubs, hobbies, volunteer work, part-time jobs or sports — are the best deterrents to serious drug abuse by young people.

IN SUMMARY

- Set good examples for your children in the use of all drugs.

their name implies: They stimulate the central nervous system producing alertness and activity. They include amphetamines, cocaine and caffeine. They're also called "uppers."

AMPHETAMINES: Usually refers to three closely related drugs: amphetamine, dextroamphetamine, methamphetamine. All promote a feeling of alertness and an increase in speech and general physical activity. Habitual users can become dependent on amphetamines and in some people, it can produce toxic effects.

COCAINE: A stimulant made from the leaves of the coca plant and most

specialist as needed.

Parents in Hawaii who believe their child has a drug problem or who wish to seek counseling should contact the Child & Family Service Ph. 521-2377 (200 N. Vineyard Blvd.); the Catholic Social Services — Debbie Anton, 537-6321 (250 S. Vineyard); the Salvation Army has an Addiction Treatment Facility — Call Jack Anderson the Outreach Counselor at 595-6371, Hawaii Committee on Alcoholism 524-1144; TEL-MED for taped information — Oahu 521-0711 Mon.-Sat. 12-8 p.m. & the Detached Counselors Program through the YMCA — Ph. 536-3556 Ext. 141, Windward Clinic Ph. 262-5857.



"I haven't figured it out yet Jones, but I just know you're up to something!"

broken glass."

The flames are now licking underneath the door, and my faith in the fire department is fading fast. Suddenly,

response.

Now I only have one question: "Who's the wise guy?"

My Turn

Thank you

Financially, 1981 was a banner year for Naval Service personnel. Congress voted you the largest pay raise in years. For the first time in nearly a decade your increase in pay and allowances exceeded the national inflation rate. Your vital contribution to our nation's security was tangibly recognized by the substantial increase in sea pay, a recognition of the hardship you endure to protect our freedom. A grateful nation said "thank you," in real money.

There remain, however, times when military pay just can't cover the special circumstances of military living. Life and death emergencies occur when you are far from home. PCS transfers wreak havoc with the most carefully planned budget. Medical bills, home fires, car repair bills, thefts of paychecks, even pay problems occurring through no fault of your own, can and do tax your ingenuity and finances.

That is the reason for the existence of the Navy Relief Society — the Navy and Marine Corps' own self-help organization. For 78 years you have donated to Navy Relief to help in their time of need both active and retired members of the Navy and Marine Corps as well as their

dependents, or survivors.

1981 was again, your year. You contributed five and a half million dollars. Your help enabled the Society to provide about twelve million dollars in financial assistance (interest-free loans or grants) to 56,000 eligible personnel. Another hundred thousand of your peers received free layettes, visiting nurse services, budget counseling, child care in hospital affiliated Children's Waiting Rooms, and other types of personal service.

Your Society, through the 3,000 volunteers whom you provide to our Branches, Auxiliaries and Shipboard Office around the world, uses your donation to help those in need. Navy Relief does not, and should not, subsidize those who are unwilling to adjust their standard of living to their income. But the Society will hold to its course of providing assistance for all valid requests for help from those of our shipmates in need.

Navy Relief says "thank you" for your support of its goals. In turn, the Society pledges to remain responsive to the valid needs of our servicemembers. We need each other.

**The Navy Relief Society
Hawaiian Auxiliary**

Street Scoop

Why did you join the Junior Reserve Officers' Training Corps (Corps (JROTC) or the Royal Canadian Army Cadets (RCAC)?



SSgt Candace Mikelsen, ROTC: "I joined the unit as I had heard a lot of good things about it. I have learned many things about the services, other people and myself as well as having fun doing it."



LCpl W. Michael Hansford Jr., ROTC: "I joined because of all the things we do as a unit; wear uniforms and travel to different places. It will also help me prepare for Annapolis after I graduate."



LCpl Paul Grey, JROTC: "I want to go to the Air Force Academy when I get out of high school. JROTC will teach me leadership, discipline, and responsibility. Those are some of the things I'll need at the academy. JROTC is also a heck of a lot of fun."



MWO Ken Prince, RCAC: "I joined the RCAC because I was interested in the military. I heard from friends the kinds of activities and training they do, and also I thought it would be a challenge to see what I could do with myself."



WO David MacPherson, RCAC: "I decided to join the Army Cadets because I wanted to learn something new. It gave me a chance to travel and get some military experience for what I want to do in the future (Canadian Armed Forces pilot)."



Cpl Gary Hollender, RCAC: "The reason I joined the army cadets was so I could do something worthwhile while learning something important. I also wanted the chance to travel and see different places. I wanted to get a bit of military experience to see what it was like in the armed forces."

**Satisfaction Guaranteed
or Your Money Back**

Frigate named in "Chesty" Puller's honor

HQMC, WASHINGTON — The USS Louis B. Puller (FFG-23) will be commissioned April 17 at Pier 9, Long Beach Naval Shipyard, Long Beach, Calif.

Named in honor of one of the Corps' most heralded individuals, the Puller is the 15th ship in the "Oliver Hazard Perry" class of frigates. The 445-foot guided missile frigate has a beam of 45 feet and a draught of 24½ feet. Construction of the ship began in 1979.

THE SHIP IS EQUIPPED with the

"Harpoon" missile system and one single-barrel 76mm (62 calibre) rapid-fire, automatic naval gun mount. In addition, the ship has two triple torpedo tubes (MK-32), and can carry two light airborne multi-purpose helicopters.

The Puller is powered by two LM 2500 gas turbines on one shaft. She can reach speeds of 30 knots and has a maximum range of 4,500 miles when traveling at an average speed of 20 knots per hour. The ship's crew includes 11 officers and 153 enlisted personnel.

Lieutenant General Louis B. "Chesty"

Puller, the only Marine to receive five Navy Crosses, was born in West Point, Va., June 26, 1898. A veteran of Korea, numerous World War II campaigns and expeditionary forces in China, Nicaragua and Haiti, LtGen Puller attended Virginia Military Institute in Lexington, Va. until enlisting in the Marine Corps in August 1918. He was appointed a Marine Reserve second lieutenant June 16, 1919 and was placed on inactive duty 10 days later when the Corps was reduced after World War I. LtGen Puller won his first Navy Cross in Nicaragua in 1928, while serving with

the Nicaraguan National Guard Detachment. He won his second Navy Cross in Nicaragua in 1932. In February 1933, he served with the Marine detachment of the American Legation at Peiping, China, and commanded the famed "Horse Marines."

HIS THIRD NAVY CROSS was awarded while he was serving as the commanding officer, 1st Battalion, 7th Marines, 1st Marine Division in 1942 Guadalcanal. His fourth Navy Cross was won when he served as the executive

officer of the 7th Marines at Cape Gloucester in the South Pacific in 1944. Puller commanded the 1st Marine Regiment at the landing at Inchon, Korea in September 1950 and was awarded his fifth Navy Cross at the Chosin Reservoir in December of the same year. He retired as a lieutenant general in 1955 and died Oct. 11, 1971 in Hampton, Va., after a long illness.

The Puller is commanded by Commander Ralph K. Martin, former Navy aide to Gen Robert H. Barrow, Commandant of the Marine Corps.



FREE SPINAL ANALYSIS AND CONSULTATION



- Danger Signals of Pinched Nerves:
1. Frequent Headaches
 2. Low Back or Hip Pain
 3. Dizziness or Loss of Sleep
 4. Numbness in Hands or Feet
 5. Nervousness
 6. Neck Pain or Stiffness
 7. Arm and Shoulder Pain

FREE ANALYSIS DOES NOT INCLUDE X-RAYS OR TREATMENT

Pacific Chiropractic

602 KAILUA RD. #207
261-0831



DR. JEANNE MICHAELS
RN, DC

Can't get a P.O. Box?
Give us a call at...



HERE ARE SOME OF THE SERVICES WE OFFER...

- P.O. Box Rentals
- Message Service
- Parcel Receiving
- Business Lic. Display
- Convenient 24 hr. Lighted Access
- Friendly Personnel
- Ladies, Protect Your Privacy and Home Address

261-4805

Call Us or Stop By The

HAMAKUA CENTER

WE ALSO OFFER AT THE SAME CONVENIENT LOCATION

KAILUA MINI STORAGE

"Clean, Secure Storage Lockers For All Your Needs At Low Rates 24 Hours Available"

261-1137

150 HAMAKUA DRIVE

BERNINA

50% OFF

- Demo Model
- Exclusive 25 Year Written Warranty
- Open Arm

- Self Adjusting Tension
- Buttonholes
- Monograms

SALE ENDS SUN., 4/4/5 p.m.

Sug. Retail

\$650



SUPER SALE

\$325

ALSO SUBSTANTIAL DISCOUNTS ON BERNINA MODELS 801-E, 830-E and 840 ALL NEW, AND IN FACTORY BOX. NO PHONE QUOTES PLEASE.

Exclusively Available at

PACIFIC SURPLUS

CALL NOW 262-8131

1247-F Pali Hwy. (1 block east of Castle Hospital) in the new 7-Eleven Complex in Kailua

Monday thru Saturday 9:30-6:00 pm
Thursday 9:30-9:00 pm
Sundays 11:00-5:00 pm

CLOSED TUESDAY

SAFEWAY



Where Everything's Right

Including The Price

Round Steaks Boneless Full Cut Safeway Quality Beef lb. \$2.39	Whole Fryers Patti Jean Frozen Government Inspected lb. 69¢	Pork Butts Lean, Tender Pork Frozen Canadian lb. 98¢	Sea Trader Tuna 6.5 oz. 85¢ SUPER SPECIAL	Coca Cola, Tab, Sprite Sugar Free 12 oz. Cans \$1.79 SUPER SPECIAL
Pork Chops Lean, Tender Assorted Family Pack, Both Ends and Centers lb. \$1.98	Crossrib Roasts Boneless Pot or Oven Roasts Safeway Quality Beef lb. \$2.98	Pink Salmon Pacific Pinks Frozen Whole or Half lb. \$2.09	Gourmet Ice Cream Lucerne 1/2 Gallon \$2.99 SUPER SPECIAL	Gold Medal Flour 10/5 lb. \$1.19 SUPER SPECIAL
Sliced Bacon Smok-A-Roma lb. \$1.89	Tom Turkeys USDA Grade A Broth Basted Armour lb. 84¢		9 Lives Cat Food 6 oz. 39¢ SUPER SPECIAL	Frozen Fried Chicken Manor House 2 lb. \$2.89 SUPER SPECIAL
Broccoli U.S. No. 1 Young and Green lb. 59¢	Mushrooms U.S. No. 1 8 oz. Brollers ea. 98¢	Spinach U.S. No. 1 Horensa Minimum 10 oz. ea. 39¢	Navel Oranges Jumbo Size Sunkist Sweet and Juicy U.S. No. 1 lb. 39¢	Large Eggs Mainland Shelltreated Lucerne Grade A Dozen \$1.15 SAFeway Low Price
				Orange Juice Scotch Buy 12 oz. 89¢ SUPER SPECIAL

YOUR SPECIAL STORE

Items and prices in this ad are effective March 31-April 3, 1982

848 Ala Ilika St., Honolulu
1121 S. Beretania St., Honolulu
1285 S. Maile Rd., Honolulu
1300 Pali Highway, Honolulu

96-1227 Kalia Highway St. Ala
1080 Kalia Dr., Kalia
48-065 Kani Highway, Kaneohe
25 Kaneohe Bay Drive, Kaneohe



SAFEWAY



BOWL 'EM OVER — Corporal Ron Hughes, Headquarters and Headquarters Squadron, displays the form which enabled him to roll 19 strikes during the intramural championships at K-Bay Lanes. Although he averaged a 216 for the three games Saturday, 1st Radio Battalion nicked H&HS in total pins and were crowned the champions. (Photo by Sgt Chris Taylor)

Radio Battalion clinches bowling crown

First Radio Battalion swept all three games and the high series from Headquarters and Headquarters Squadron Saturday at K-Bay Lanes, behind the bowling of Private First Class Glenn Helm who rolled an average of 215.

By winning all the games, the radiomen, who had a season record of 43-17 and collected 59 points, were crowned the Air Station Intramural Champion.

The first two games of the championship were decided in the last frames as 1st Radio edged out H&HS in the first by five pins and then again in the second by 30 pins. In the final game PFC Helm didn't leave an open frame and Gunnery Sergeant Terry Small rolled a 223 to

lead their team to a decisive 59-pin victory.

H&HS, who finished first in the Friday afternoon league with a record of 42-18 and 58 points, found the competition tough as the majority of the team bowled under their averages. But they went pin-for-pin against the evenly matched radiomen until the third game.

"It was the best bowling as far as competition goes," commented GySgt Frank Livingston of 1st Radio Bn.

"It was close," stated Corporal Ron Hughes of H&HS who rolled 19 strikes and had the high series for the tournament. "Each game was decided in the last frame ... It was definitely close," he added.

TEAM STANDINGS

1st Radio Bn	
GySgt Frank Livingston	143-168-156—467
GySgt Terry Small	191-201-223—615
SSgt Ray Rascua	145-159-176—480
PFC Glenn Helm	230-211-189—630
SSgt Rich Richardson	(deployed)

Headquarters and Headquarters Squadron

Capt Ron Isa	155-141-146—438
MGySgt C. Zombro	145-149-181—475
MSgt Larry Lair	179-168-146—493
SSgt Bob Resner	185-186-166—537
Cpl Ron Hughes	201-226-211—638

Sam Gotcha Cryin' Uncle?



When you are digging down deep to meet your income tax payments, every bit of extra cash can help. So this is a good time to look around the house for disposable, but still usable, articles. Then call our Classified Advertising Department and ask for your Advisor. She will help you with a selling message in the Miscellaneous For Sale listing. It's the easy way to find extra money with a minimum effort.

CALL
235-5881
or 622-3966

Here's Kimo to explain

How to Fly a Kite Safely.

- 1 Always use wood and paper in your kite ... not wire or metal.
- 2 Always use dry string ... not wire or anything metallic.
- 3 Always fly your kite on days when there is no rain.
- 4 Always fly your kite FAR FROM ELECTRIC POWER LINES ... and remember these rules when flying your model airplane, too.
- 5 Always avoid busy streets and highways while flying your kite.

- 6 Always keep away from fallen wires.
- 7 Always fly your kite far from TV and radio antennas.
- 8 Always call us if your kite gets snagged in a power line. Do not pull the string or climb power poles.



**Hawaiian
Electric**



SCHEDULED AIRLINES TICKET OFFICE (SATO)

Staffed by full time Airline personnel
To assist in your travel requirements

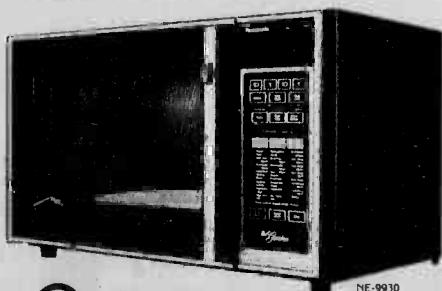
- Individual leave
- Family travel to the Mainland
- Neighbor Island
- International
- Dependent travel to West-PAC
- Fares
- Flight Information

Contact SATO for reservations and airline tickets at any one of our three convenient on base locations.

Pearl Harbor	Bldg. 487 -- Tele: 422-0571 Office hours - Mon. thru Fri. 0730-1600
Camp Smith	Bldg. 2D - Tele: 487-1567 Office hours - Mon. thru Fri. 0800-1600
Kaneohe MCAS	Bldg. 209 -- Tele: 254-1564 Office hours - Mon. thru Fri. 0730-1530

YOUR COMPLETE COOKING CENTER

Panasonic's Dimension 3 Microwave/
Convection Oven with the Genius
Auto Sensor Control



Panasonic presents an exciting new dimension in cooking versatility ... an oven that not only lets you cook by microwave, convection, or combination microwave/convection, but also programs its own cooking times, power levels and temperature settings for you with a touch of a single control.

From the speed and convenience of microwave cooking to browning and baking with convection heat and automatic combination microwave/convection cooking, your complete cooking center the NE-9930 can be so easy, so creative ... and so much fun.

Available at your military exchange.

Panasonic
just slightly ahead of our time.

**5TH
LOCATION
COMING
SOON!**

**CELEBRATE
WITH US**

**Pre-
GRAND
OPENING**

**1/2
OFF**
VIP & 2 YEAR
MEMBERSHIPS



**JOIN US....
IN THE GALA
CELEBRATION OF OUR
WAIPIO LOCATION**

SPA

Health & Fitness Centers

FACILITIES

- Hydro Whirlpool
- Sauna Bath
- Jogging Machines
- Private Showers
- Private Lockers
- Vanity Area
- Hair Dryers

- \$80,000 in Modern Exercising Equipment
- Supervised Programs Designed For Reducing, Gaining or Muscle Toning
- Worldwide Facilities
- Nutritional Guidance

PUNAHOU
1212 Punahou Street
in the Banyan Tree Plaza
949-0026

PEARLRIDGE
420 Pearlridge
Shopping Center
487-5551

**WAIPIO
LOCATION
COMING
SOON!**

AINA HAINA
850 W. Hind Drive
Aina Haina Prof. Bldg.
373-9836

KANEOHE
46-161 Kahuipo St.
across from Kaneohe Detum
235-6461

Amtracks crush Motor T, Weapons zap H&MS-24

by LCpl Charlie Marshall

Two second-inning home runs by Corporal Mark Fetter paved the way for Amtracks to romp over Brigade Service Support Group's "Motor T" 130 in intramural softball action at Pollock Field.

The Trackers knew from the start that it was their game Thursday night as lead-off hitter, Lance Corporal Tyler King ripped an inside-the-park home run deep into right field.

THE WIN BOOSTED the Amtrack Detachment's record to 3-2, which places them in a three-way tie for second place in the American Division.

Hospitalman 3rd Class Reid Baynard, Amtrack's pitcher, had his no-hitter enhanced by two strike-outs. The farthest advance Motor T made was to first base, courtesy of HM3 Baynard who gave up four walks.

The Amtrackers did most of their damage in the second inning as Cpl Fetter led off with a home run. Cpl Sam Swensen singled and later went to third as Cpl Russell

Anderson singled. Cpl Svensen scored the game's third run on a base hit by LCpl Dainton Rahn.

A LCpl King single brought in Cpl Anderson while LCpl Rahn moved to third. With Lance Corporals King on first and Rahn on third, LCpl Bruce Hunter collected two RBIs as he singled up the middle.

LCPL HUNTER scored as Private First Class Jeff Abrams doubled into center field and then came home as HM3 Baynard popped a single into right. Starting the batting order again Cpl Fetter connected his second home run of the inning.

Motor T finally retired the side but not until Amtracks had scored nine runs from nine hits.

Amtracks added three more runs in the fourth inning and waited out the fifth to win the game by the 12-run rule.

Weapons 10
H&MS-24 0

Weapons Company, 2d Battalion, 3d Marines won their first game of the season and at the same time handed the Bandits of Headquarters

and Maintenance Squadron-24 their first lost Thursday night.

After the 10-0 upset, Gunnery Sergeant James Brechlin said, "it feels good to win and we're going to try it again next time."

WEAPONS COMPANY simply outplayed the Bandits. Making good use of the old philosophy, "you can't win unless you hit the ball," Weapons squeezed out 12 hits, two being triples. The Bandits had four.

After Weapons jumped out to a one run lead in the first, they returned in the third with four more. LCpl Antonio Rosado walked to start off the inning and went to second on a Cpl Rick Miller single. LCpl Steve Hoffman smacked a triple deep into center field which allowed both runners to score. A LCpl Ken Ervin single allowed LCpl Hoffman to cross the plate. In turn, LCpl Ervin scored as Cpl Phil Dameron connected with a hit.

Weapons added two more in the fourth and three in the fifth inning to shut out the Bandits, 10-0.



HIGH AND OUTSIDE — Sergeant Joe Johnson, Communications Support Company's catcher, leaps for the sky to catch an overthrown ball as Gunnery Sergeant Vic Mendiola, Marine Air Control Squadron-2, approaches the plate. MACS-2 won the game 11-4 but lost to Station

Operations and Maintenance Squadron's Crash Crew in the finals of the second Annual Hawaii Marine Softball Tournament held Friday through Monday. (Photo by LCpl Charlie Marshall)

MILITARY SPECIAL "ROOM & CAR PACKAGE"

Includes:

- RENTAL CAR by Trans-lense Hawaii Rent-A-Car
- DELUXE, Spacious Rooms with:
 - Air Conditioning
 - FREE Color Television
 - Room Service Available
 - FREE Parking, Baby-sitter Referral
 - Hotel Laundromat
 - Swimming Pool
 - FREE 24-Hour Airport Shuttle Service
- CREDIT CARDS: American Express, VISA, Bank Americard, Carte Blanche, Diner's Club & MasterCard.
- Location on main bus line convenient to all military installations.

ROOM ONLY \$38.00 Plus Tax per night

For Reservations & Information Call: 836-0661

WAIKIKI, MAJOR ISLAND ATTRACTIONS AND AIRPORT. *Holiday Inn AIRPORT*

Additional Conveniences:
Lei Maker's Garden Restaurant
Kalama Lounge
(with nightly entertainment)

Room & Car \$51⁹⁵ Per Day

Richard W. Holmes, M.A.

Wishes to announce the opening of his private practice. Services include individual, marriage and family counseling. Alcohol and drug counseling also available. Military and their dependents welcome.

CHAMPUS For appointment call 941-7812

the law center
of michael pence

emphasis: **divorce**
bankruptcy & adoption

century center 1750 kalakaua ave. suite 1308
955-4496

low rates

SPRING FOR GOODYEAR POLYSTEEL

SAVE ON RADIALS

- Steel and polyester — Custom Polysteel gives you both!
- Gas-saving radial construction.
- Sure-footed traction, rain or shine.

\$49 Whitewall Sure P175/75R14 No trade needed

Whitewall Size	SALE PRICE	FET No trade needed
P175/75R14	\$59.00	\$1.83
P185/75R14	\$63.00	\$2.04
P205/75R14	\$69.00	\$2.34
P215/75R14	\$76.00	\$2.48
P225/75R14	\$79.00	\$2.68
P215/75R15	\$78.00	\$2.59

Sale ends April 3

RAIN CHECK — If we sell out of your size we will issue you a rain check, assuring future delivery at the advertised price.

Not all hub and sidewall styling vary with size. Not all tires look exactly like tire shown.

ARRIVA RADIALS FOR IMPORTS!

- Saves gas with easy-rolling design and radial construction.
- Beats tire changeover and cost of snow tires.
- Smooth, quiet ride — good news for imports.

\$47⁹⁰

Blackwall Size	Everyday Low Price	Plus FET and old tire
P165/80R13	\$61.80	\$1.52
P165/80R13	\$65.35	\$1.67
P165/80R13	\$66.55	\$1.79
P165/80R13	\$68.85	\$1.48

Other Sizes Also Low Price

YOU'RE OUT AHEAD WITH TRACKER LT FOR LIGHT TRUCKS.

WHEEL ALIGNMENT

\$21 (Guaranteed 100 days or 2,000 miles, whichever comes first)

- Inspect all four tires, correct air pressure. Set front and rear wheel caster, camber, and toe to proper alignment. Inspect suspension and steering systems. Most U.S. cars and imports with adjustable suspension include front wheel drive. Shimmy, light trucks and cars requiring MacPherson Strut correction extra. Pads and additional services extra if needed.

1. Lifetime Alignment Agreement \$44

For as little as you own your car, we will recheck and align the front end every 6 months or 5,000 miles, or whenever needed. Valid only at the Store where purchased. Offer does not cover the replacement of tires and/or parts that become worn or damaged. Agreement void if service work affecting the alignment is performed by any other outlet.

BRAKE SERVICE YOUR CHOICE

\$88

Import or domestic cars. Additional parts and services extra if needed.

Includes: Install new front grease seals, pack front wheel bearings, inspect hydraulic system, add fluid, road test.

2-Wheel Front Disc: Install new front brake pads, resurface front rotors in special calipers.

OR

4-Wheel Drum: Install new brake lining and resurface all four drums.

Warranted 12 months or 12,000 miles, whichever comes first!

\$55

178 14 Blackwall, 1500mm C, 1500mm FET, no trade needed

Size	Load Range	Type	SALE PRICE	FET No trade needed
7.00-14	D	TL	\$60.40	\$2.05
7.75-15	C	TL	\$68.80	\$3.10
8.25-15	C	TL	\$68.80	\$3.30
8.75-15	C	TL	\$72.00	\$3.43
9.00-15	D	TL	\$72.00	\$3.34
9.75-15	D	TL	\$78.50	\$3.79
10.00-15	D	TL	\$80.50	\$4.21
11.00-16	C	TL	\$79.50	\$3.52

Sale ends April 3

KANE OHE BAY SHOPPING CENTER

Manager Philip G. Smith

GOODYEAR

Just Say "Charge It!" with approved credit.

Goodyear Revolving Charge Account. Use any of these other ways to buy: MasterCard, Visa, American Express, Carte Blanche, Diners Club, Cash.

Phone: 247-6668

Store Hours

Mon - Fri 7:30 am to 6:00 pm
Sat 7:30 am to 4:00 pm

Support The Program That Helps Protect Your Community

CRIME STOPPERS

If you know of, or see a crime, call 955-8300 immediately. Crime Stoppers is a new system that keeps you anonymous and if your tip leads to an indictment or conviction, you could earn up to \$1,000.

FRESH EASTER CHOCOLATES

The Easter Bunny orders his special Easter Basket from the Kailua Candy Co. Individual Easter Baskets just for you (with tender loving care) • Big Beautiful Solid Chocolate Easter Bunnies • Solid Hawaiian Style Easter Eggs; Dark Chocolate filled with Guava and Coconut, Milk Chocolate filled with Passion Fruit and White Chocolate filled with Chocolate Macadamia Nut Fudge.

We ship to the mainland...

418C
Kuulei Rd.
262-2100
The Windward Side's Only Candy Shop

Susan Beers' Salon

proudly announces the addition of Nancy Higa to their staff...

Ms. Nancy Higa has just returned from working 3 years in Europe where she specialized in European & New Wave cuts. She is a licensed specialist in "The Black Hair Is" program. Before leaving for Europe, she was formerly with Glemby of Liberty House, Kailua, where she specialized in relaxing, curly curls, & press & curl. We invite you to come in to meet & consult with her for any of your hair care needs.

Susan Beers' Salon

116-C Hekili St., Kailua

Phone 261-8571

Marine strides for goals

by LCpl Charlie Marshall

"One of the goals I set for myself before I came into the Marine Corps was to qualify for the Boston Marathon," revealed the lean road runner from Station Operations and Maintenance Squadron.

Now, after he completed the Maui Marathon in 2:47 (three minutes under the qualifying time) Crash, Fire and Rescueman Corporal Thomas Ray is qualified to run any marathon in the world.

"Most people say you can't run back-to-back marathons," the 5-foot 10-inch, 150-pounder stated, "but I just proved them wrong."

Cpl Ray finished the Maui Marathon first in his age group and eighth overall then left for Schofield two weeks later to complete their 50-mile ultramarathon second with a time of 6:44.

Cpl Ray has the same attitude toward his work. "Next week I'm going to California for a four-week course to become a Search and

Rescue swimmer. After I'm certified I'll be working for SOM's Crash Crew one day and then the Search and Rescue section the next.

When asked about his heavy work load, Cpl Ray responded, "I wouldn't have it any other way. There's no question in my mind I can do it."

Planning to "Run to the Sun," Cpl Ray's next race is going to be the Mount Haleakala run. "I was intrigued by the thought of running a marathon and then up

the side of a 10,000-foot dormant volcano."

In preparation for this, Cpl Ray runs 15 to 25 miles a day. Up in the morning before the rising sun, he puts in his miles then is to work by 7 a.m.

Describing his running as moody, Cpl Ray has been at it since high school but has been seriously jogging for the past six months. "Doing the best I can do is what I strive for... not all the trophies and the fame. Some people are so engrossed with first place, but that's not me. Winning

just keeps me motivated and motivation keeps me running."

Coming up in October is one of the biggest tests of endurance, the Ironman World Triathlon. Cpl Ray plans on being in Kailua-Kona on the island of Hawaii to test himself against the grueling open-water swim, bike race and marathon.

"I'm not looking to win or place in the top 10 finishers. I'm just going to be there to finish. Some of the top world-class athletes will be there and I'm going to try to compete at their level."

Running

Leathernecks compete for racing titles

by LCpl Todd Ramsburg

"I feel surprisingly fantastic, I'm ready to do it again!" said Corporal Thomas Ray, Station Operations and Maintenance Squadron, moments after he finished the grueling 50-Mile Ultra-Marathon held at Schofield Barracks March 21.

It took Cpl Ray 6:44 to cover the course, just two minutes behind the Elite Class winner Dennis Mahoe. When covering 50 miles, a two-minute spread is a very close race.

Immediately following his second-place finish, Cpl Ray dashed back on the course to give moral support to Sergeant Chuck Cisler, Headquarters and Headquarters Squadron, who had eight miles to go.

"THE SUN WENT" under and it started to rain, otherwise I don't think I could have made it," said Sgt Cisler after he finished with a time of 8:34. "It was the toughest race I've ever run," added the second-place military finisher.

The first-place military finisher was another Kaneohe Bay Marine. Sergeant Mike Webb, Marine Air Control Squadron-2, completed the contest in 8:07. The three travel-weary leathernecks took turns congratulating each other at the awards ceremony.

Also held at the same time was the 57-Mile Relay Race made up of

six-man teams. In this competition, each team member ran 8.2 miles.

THE TOP THREE finishing teams in the Military Division were Marines. Hawaii Marine Red finished first, with a time of 5:36. Second place was awarded to Marine Barracks Plus, a Marine team from Pearl Harbor, and Hawaii Marine Blue came in third.

The biggest story of the day was the disappointing finish of the Hawaii Marine Gold Team.

"They told us to go the wrong way," said Sgt Dean Staring, 1st Radio Battalion. "The race officials blew it."

The direction signs were confusing and hard to see, and many runners made wrong turns. The signs were approximately two inches high by a foot long, and they were taped to existing poles with other signs on them.

To add insult to injury, or rather injury to insult, Sgt Staring was forced off the road by a truck at the six-mile mark. As he jumped off the road, he sustained an injury to his ankle.

"FOR THE LAST two miles I tried to skip-step, skip-step, just hoping I could make it in," he said. He finally did make it, but the Marines lost a lot of time.

Even with these setbacks, the team managed to place third in the Elite Class with a time of 5:27.

KANEOHE MARINE CORPS AIR STATION CLUB SYSTEMS' MARCH CALENDAR EVENTS

Officers' Club April 1982						
SUNDAY	MONDAY	TUESDAY	WEDNESDAY	THURSDAY	FRIDAY	SATURDAY
<p>*NEW LUNCH SPECIALS: Features Lamb Burger, Pacific Burger and Goshu Burger.</p> <p>*SPECIAL NOTE: OWC Art Auction Saturday 8 May. Viewing from 1800 to 2000. Auction begins at 2000 on Lower Level. Dining Room will serve Beef 'N' Crab. Buffet 1700 till 2100. Reservations requested for planning purposes.</p>				1 Lunch Special Liver 'n' Onions	2 Lunch Special Seafood	3 Alaskan King Crab & Hotel Round of Beef \$10.95
4 Every Sunday Champagne Brunch with a mini buffet & menu orders.	5 Lunch Special Mexican Plate Dining Room Closed For Dinner	6 Lunch Special Salisbury Steak Bar open 4-10 Dining Room Closed For Dinner	7 Lunch Special Sweet 'n' Sour Pork Dinner — Mongolian BBQ 30¢ ounce	8 Lunch Special Liver 'n' Onions Dinner — Beefsteaks \$4.95	9 Lunch Special Seafood Luk's Pineapple Store — Variety Dinner — Mongolian BBQ & Steak Out	10 Alaskan King Crab and Hotel Round \$10.95
11 SEE FLVER FOR SPECIAL EASTER BRUNCH	12 Lunch Special Mexican Plate Dining Room Closed For Dinner	13 Lunch Special Fried Chicken Bar open 4-10 Dining Room Closed For Dinner	14 Lunch — Chopped Steak Dinner — Mongolian BBQ 30¢ ounce	15 Lunch Special Liver 'n' Onions Dinner — Beefsteaks \$4.95	16 Lunch Special Seafood Sassy Mustang Oldies Dinner — Mongolian BBQ & Steak Out	17 Alaskan King Crab and Hotel Round \$10.95
18 Champagne Brunch & mini buffet. In the evening Prime	19 Lunch Special Mexican Plate Dining Room Closed For Dinner	20 Lunch Special Salisbury Steak Bar open 4-10 Dining Room Closed For Dinner	21 Lunch Special Shrimp 'n' Chicken Dinner — Mongolian BBQ 30¢ ounce	22 Lunch Special Liver 'n' Onions Dinner — Beefsteaks \$4.95	23 Lunch Special Seafood Luk's Pineapple Store — Variety Dinner/Mongolian BBQ & Steak Out	24 Alaskan King Crab and Hotel Round \$10.95
25 Prime Rib & Peel Shrimp For 9.95	26 Lunch Special Mexican Plate Dining Room Closed For Dinner	27 Lunch Special BBQ Beef Bar open 4-10 Dining Room Closed For Dinner	28 Lunch Special Sweet 'n' Sour Pork Dinner — Mongolian BBQ 30¢ ounce	29 Lunch — Liver & Onions Dinner — Beefsteaks \$4.95	30 Lunch/Seafood Sassy Mustang Oldies/Goodies Dinner/Mongolian BBQ & Steak Out	

Staff NCO Club April 1982						
SUNDAY	MONDAY	TUESDAY	WEDNESDAY	THURSDAY	FRIDAY	SATURDAY
<p>STEAK OUT — Charcoal grill out steak to your liking from 4 p.m. till 7 p.m.</p> <p>PRIME RIB AND CRAB 6 till 9 p.m. Saturdays Dining featuring PEEL AND EAT SHRIMP & till 9 p.m. Fri.</p> <p>* Mongolian Barbecue served from 5:30 till 8:30 p.m. every Thursday</p> <p>* Family Night Buffet served from 5:30 till 8:30 p.m. every Wednesday</p>				1 Bacon, Liver & Fishons	2 Fish and Chips 11 a.m. till 1 p.m.	3 Request Night 9 p.m.-1 a.m.
4 Buffet Brunch Served Every Sunday From 10 a.m. till 1 p.m.	5 Happy Hour 5:00 till 6:00 p.m. Mexican Plate served from 11 a.m. till 1 p.m.	6 Happy Hour 5:00 till 6:00 p.m. Meat Loaf	7 BBQ ribs Oldies But Goodies 8:30-12 p.m.	8 Teriyaki Chicken "Katie Russell" 8-11 p.m.	9 Fish and Chips 11 a.m. till 1 p.m.	10 "Request Night" 9 p.m.-1 a.m.
11 Easter Kiddie Bingo with the Bunny	12 Happy Hour 5:00 till 6:00 p.m. Mexican Plate served from 11 a.m. till 1 p.m.	13 Happy Hour 5:00 till 6:00 p.m. Baked Chicken	14 Stuffed Shrimp "Oldies But Goodies" 8:30-12 p.m.	15 Liver, Bacon & Onions "Crystal Rose" 8-11 p.m.	16 Fish and Chips 11 a.m. till 1 p.m.	17 "Request Night" 9 p.m.-1 a.m.
18 Buffet Brunch Served Every Sunday From 10 a.m. till 1 p.m.	19 Happy Hour 5:00 till 6:00 p.m. Mexican Plate served from 11 a.m. till 1 p.m.	20 Happy Hour 5:00 till 6:00 p.m. Short Ribs	21 Veal Patties "Oldies But Goodies" 8:30-12 p.m.	22 Spaghetti & Meatballs "Katie Russell" 8-11 p.m.	23 Fish and Chips 11 a.m. till 1 p.m.	24 "Request Night" 9 p.m.-1 a.m.
25 Buffet Brunch Served Every Sunday From 10 a.m. till 1 p.m.	26 Happy Hour 5:00 till 6:00 p.m. Mexican Plate served from 11 a.m. till 1 p.m.	27 Happy Hour 5:00 till 6:00 p.m. Roast Turkey	28 Sweet & Sour Meatballs "Oldies But Goodies" 8:30-12 p.m.	29 Liver, Bacon & Onions "Crystal Rose" 8-11 p.m.	30 Fish and Chips 11 a.m. till 1 p.m.	31 "Request Night" 9 p.m.-1 a.m.

Enlisted Men's Club April 1982						
SUNDAY	MONDAY	TUESDAY	WEDNESDAY	THURSDAY	FRIDAY	SATURDAY
<p>*Soul Night in the Moongate Lounge every Wed. for your listening pleasure. "Rocky" will play only your favorites every Wed. At dinner the Chef's Special is only \$4.25 includes salad bar.</p> <p>*Stop by the "Moongate Lounge" for lunch and see who is going to be customer of the day.</p> <p>*Prime Rib Special \$6.95. Prime Rib and King Crab Special \$9.85. Or just King Crab Special \$9.85. Every Friday, Saturday and Sunday.</p> <p>*Don't miss the Rock and Roll sounds of the "P" Boy April 30th. Also appearing in Gallery.</p>				1 Key Willie 7:30-11:30 p.m. Moongate Lounge	2 Main Ballroom Movies 10:10 8:30 p.m.-12:30 a.m. D.J. Moongate Lounge	3 Band Star 8:30 p.m.-12:30 a.m. Moongate Lounge
4 Enjoy a meal in the "Breezy" Inn from 2 till 8 p.m. Every Sunday featuring Prime Rib Special for \$6.95	5 "Italiano Nite" all the spaghetti you can eat for only \$3.50 Monday Happy Hour from 5:30 to 7:30 p.m. Free Popcorn	6 Smorgasbord All you can eat for \$5.00 D.J. playing Rock and Roll 7:30-11:30 in the Moongate Lounge	7 Band Harlow 7:30-11:30 p.m.	8 Silver Dollar 7:30-11:30 Moongate Lounge	9 Band Dragons 8:30 p.m.-12:30 a.m.	10 Band Charity Ann 8:30 p.m.-12:30 a.m. Moongate Lounge
11 Prime Rib and King Crab for \$9.85 or just King Crab \$9.85	12 "Italiano Nite" all the spaghetti you can eat for only \$3.50 Monday Happy Hour from 5:30 to 7:30 p.m. Free Popcorn	13 Smorgasbord All you can eat for \$5.00 D.J. playing Rock and Roll 7:30-11:30 in the Moongate Lounge	14 Band Harlow 7:30-11:30 p.m.	15 Key Willie 7:30-11:30 p.m. Moongate Lounge	16 Band Galleys 8:30 p.m.-12:30 p.m. Ballroom	17 Movies Ballroom 8:30 p.m.-12:30 a.m. D.J. Moongate Lounge
18 Enjoy a meal in the "Breezy" Inn from 2 till 8 p.m. Every Sunday featuring Prime Rib Special for \$6.95	19 "Italiano Nite" all the spaghetti you can eat for only \$3.50 Monday Happy Hour from 5:30 to 7:30 p.m. Free Popcorn	20 Smorgasbord All you can eat for \$5.00 D.J. playing Rock and Roll 7:30-11:30 in the Moongate Lounge	21 Band Harlow 7:30-11:30 p.m.	22 Silver Dollar 7:30-11:30 Moongate Lounge	23 Band Charity Ann 8:30 p.m.-12:30 a.m. Moongate Lounge	24 Venus 8:30 p.m.-12:30 a.m. Moongate Lounge
25 Prime Rib and King Crab for \$9.85 or just King Crab \$9.85	26 "Italiano Nite" all the spaghetti you can eat for only \$3.50 Monday Happy Hour from 5:30 to 7:30 p.m. Free Popcorn	27 Smorgasbord All you can eat for \$5.00 D.J. playing Rock and Roll 7:30-11:30 in the Moongate Lounge	28 Guest Night bring the Roe for a drink or dinner	29 Key Willie 7:30-11:30 p.m. Moongate Lounge	30 2 Bands Galleys 8:30-10:30 p.m. Prime Rib 11:30 p.m.-12:30 a.m. Ballroom	31 Charity Ann 8:30 p.m.-12:30 a.m. Ballroom

"PUBLIC NOTICE"

Over 600 new 1982 ceiling fans have just arrived, factory direct at Pacific Surplus & Distributors. All will be sold at wholesale-based prices. 30 fans on display. Examples:

- 36" S.M.C. w/5 spd., wall control, sealed bearing motor. 5 yr. warranty. Suggested Retail \$129.00 — only **\$49.50**
- 48" S.M.C. w/5 spd., wall control, sealed bearing motor. 5 yr. warranty. Suggested Retail \$149.00 — only **\$69.50**
- 48" S.M.C. w/wood blades, variable reostat, reversible motor. Suggested Retail \$199.00 — only **\$110.50**
- 36" HUNTER w/wood blades, 2 spd. motor. Suggested Retail \$248.00 — only **\$148.00**
- 52" HUNTER w/wood blades, 2 spd. motor. Suggested Retail \$398.00 — only **\$218.00**
- 52" CASABELLA, heavy duty housing, variable reostat, reversible motor, redwood blades. Suggested Retail \$385.00 — only **\$238.00**
- 52" Zephyr antique or polished brass. Top of the line. Suggested Retail \$478.00 — only **\$278.00**

Bring in this ad for \$10 discount on selected light kits.

NO FREE DELIVERY'S. HURRY FOR BEST SELECTION.

OUR GUARANTEE: Time limited to 30 days. If not satisfied, return for full refund. No questions asked.

LIMITED LIFETIME WARRANTY ON HUNTER FANS

PACIFIC SURPLUS & DISTRIBUTORS
CALL NOW 262-8131

CLOSED TUESDAY
Monday thru Saturday 9:00-6:00 p.m.
Thursday 9:00-9:00 p.m.
Sunday 11:00-5:00 p.m.

1247 F Pali Hwy. (1 block east of Castle Hospital) in the new 7-Eleven Complex in Kailua



VIDEO CENTER & ZENITH

OFFER YOU

FREE

United States Savings Bonds

- when you purchase any of these models of Video Cassette Recorders from ZENITH:
- ZENITH VR 9780 Receive \$100 Savings Bond FREE!
- ZENITH VR 9775 Receive \$100 Savings Bond FREE!
- ZENITH VR 9800 Receive \$100 Savings Bond FREE!
- ZENITH VR 8900 Receive \$50 Savings Bond FREE!
- ZENITH VR 8500 Receive \$50 Savings Bond FREE!

Receive \$200 Savings Bond FREE with the purchase of the 45 Inch Big Screen ZENITH SN 45451

HURRY: Offer ends May 12, 1982. Allow 4-6 weeks delivery on savings bonds.

"Island Video Club"

Video Center's "Island Video Club" offers you more, including:

- 50% discount of film rental
- 10% discount on accessories!
- Cost, plus 10% on all brands!
- Film trade-in program!
- Equipment rental!
- Special Discounts!
- We're Your Factory-Authorized Service Center!

VIDEO CENTER

2010 PAA ST. HAWAII

836-5050

261-2022

124 501 E. KAPAHULU AVE. #200

671-4206

The Video Specialty Stores

Sportnotes

The First North Beach Surf Classic, for active duty service members only, is scheduled for Saturday and Sunday.

This classic, which consists of four 20-minute heats, will award medals to the top five finishers and a trophy to the branch of service with the most people in the top eight finishers.

All boards must be under eight feet long and leashes are required.

Check-in time is 7:30 a.m., Saturday at the lifeguard stand, where participants will receive the judging rules and scoring brief. Surf jerseys will be provided at this time for identification.

Applications are available in the Athletics Office.

For more information contact Sgt Mich Earls at 257-2922.

The University of Hawaii will sponsor an All-Comers Track Meet April 7 starting at 6:30 p.m. at their track complex. All interested athletes should contact Jan Young at the Athletics Office.

Experienced wrestlers interested in trying out for the Hawaii Marine Wrestling team are urged to contact Jerry Price in the Athletics Office at 257-3108/3520/3258. The next scheduled matches are the Army Open Invitational to be held at Fort Shafter Gym April 9 and 10.

MARINE CORPS AIR GROUND COMBAT CENTER, TWENTYNINE PALMS, Calif. — The Marine Corps Air Ground Combat Center here will hold its Fifth Annual Rodeo April 23 through 25 and invites all military personnel, their families and friends to come and have fun.

Aside from the rodeo side of the house, two dances will be sponsored by the Combat Center Stable during the festivities. Also included in the competition is a team championship for the top scoring military team. The Commanding General's Trophy will be awarded.

One team who will be vying for the distinguished Commanding General's Trophy

will be the Hawaii Marine Rodeo Team. At the present, the team is recruiting new members. Interested cowboys should contact Staff Sergeant Cecil Stout at work 257-2512 or at home 239-9287.

For more information or to order entry forms, contact Roy Madden, stable manager, at autovon 952-6360 or commercial (714) 368-6360.

The Women's Varsity Slowpitch Softball team is now being formed and all interested Marines should contact the coach, Staff Sergeant Sam Davis at 257-2045 or 254-3951 after duty hours. The season starts in late April.

NAVAL AIR STATION, BARBERS POINT, Hawaii — The Navy Flying Club here has announced the convening of its Federal Aviation Administration approved Commercial/Instrumental Ground School course for military personnel, their dependents and civilian employees of the Department of Defense.

The course provides instruction in the subject areas necessary to complete the FAA written examination for commercial and instrument ratings.

Classes meet Tuesday and Thursday from 6 to 9 p.m. in the Flying Clubhouse, Building 1868 here. Course registration fee is \$75 and enrollment is limited to 25 students. For more information call 684-8221/8222.

The Hawaii Marine Athletic Council's bowling roll-off to select a team to participate in the Fleet Marine Force, Pacific competition ended March 19. After playing 24 games the six team members and one alternate are:

Name	Average	Retire after 20 years and get 50% of your base pay from the day you retire. Not at age 55, 62 or 65 like most civilian jobs.
Cpl Ron Hughes	206	
Cpl Craig Gilliam	205	
PFC Glen Helm	205	
Cpl John Fitzgerald	204	
GySgt Butch Matson	203	
LCpl Curt Sands	202	
GySgt Terry Small	200	

Stay Marine.

CAMOUFLAGE SHOP

- PARACHUTES
- JUNGLE HAMMOCKS
- JUNGLE BOOTS
- CAMOUFLAGE CLOTHING
- JUNGLE FATIGUES
- COMMANDO SWEATERS
- NEW CAMOUFLAGE FIELD JACKETS

AND MUCH MORE

76 WILIKINA DR.
WAHIAWA
622-5538

Hours: Mon.-Fri. 10:30-7:30
Sat. & Sun. 10-5

OFFICIAL HAWAII MUSIC REPORT MARCH 27, 1982

LAST WEEK	THIS WEEK	TITLE	ARTIST
1	1	I Love Rock 'n Roll	Joan Jett
2	2	Open Arms	Journey
3	3	My Guy	Sister Sledge
8	4	We Got The Beat	Go-Go's
13	5	That Girl	Stevie Wonder
4	6	Grapevine/So Ruff, So Tuff	Roger
9	7	Tonight I'm Yours	Rod Stewart
19	8	Honey, Honey	Manhattans
18	9	Freeze Frame	The J. Geils Band
11	10	Make A Move On Me	Olivia Newton-John

The Official Hawaii Music Report is determined by weekly ballots you fill in, local record sales, caller requests and KIKI research.

Robert Fishman, Ph.D.
Licensed Psychologist

Specializing in Short-Term Therapy
with Adults, Children and Families

**WISHES TO ANNOUNCE
THE OPENING OF A NEW OFFICE**

415 Uluniu Street
Kailua, Hawaii 96734

*Services covered by HMSA, CHAMPUS, Medicaid
and most other Health Insurance Plans*

Phone: 247-5552

See your Career Planner

You'll get straight talk. Answers to your questions. And a fair look at all the Corps has to offer.

HqCo. 1st Marine Brigade
GySgt Johnson R.E.
Sgt Bennett
257-3670/3404

3/3
SSgt Szweda
Sgt Jackson
257-2673

BSSG
SSgt Allen
Sgt Duncan
257-3127

MACS-2
SSgt Denoi
257-2995

VMFA-212
GySgt Colbert
247-2024

CommSptCo
SSgt Bustamante
257-3143

FMFPac
GySgt Perry
477-6226

HqCo. 3d Marines
Sgt Piche W.E.
257-2758

1/12
Sgt Allen
257-3225

MAG-24
GySgt Malconian
257-2285/2012

HMM-165
Sgt Jeffra
257-2489

VMFA-232
SSgt Pietrzak
257-2623

H&HS
SSgt Garcia
257-2841/3653

Marine Barracks Hawaii
SSgt Tubbs
471-9519

Stay Marine.

You can count on the Corps.

Last year 5,000 Marines got new jobs...right here in the Corps.

If you've considered looking for a job outside the Corps, see your career planner. Because the job, skill and training you're looking for are probably right here. All you have to do is make a lateral move. Your career planner can tell you if you qualify and he'll start the ball rolling.

If you qualify, there are over 150 enlisted undermanned skills into which you could make a lateral move. Many of the openings are within occupational fields like: Ordnance; Data/Communications and Maintenance; Motor Transport and Aircraft Maintenance and Avionics. And by making a lateral move you won't be losing rank. Nor your many benefits...benefits you may have to pay for in a civilian job.

You'll keep your low cost medical coverage which takes care of the whole family. You'll keep your educational benefits and retirement plan, which pays 50% of your base pay when you retire after 20 years...75% after 30. And you'll keep a job you're truly proud of.

See your career planner. There're a lot of good reasons to...

Stay Marine.



Localmotion

K-BAY OFFICERS' CLUB

TODAY — Lunch in the Pacific Room from 11 a.m. to 1 p.m. features special, hot carved sandwiches, soup and salads. Mongolian barbecue on the Lower Lanai from 6 to 8:30 p.m.

THURSDAY — Lunch in the Pacific Room from 11 a.m. to 1 p.m. Beefsteak buffet from 6 to 8:30 p.m. featuring steamship round, a seafood item, rice or potatoes, and a salad bar.

FRIDAY — Lunch in the Pacific Room from 11 a.m. to 1 p.m. Happy hour in the Tapa Bar from 4:30 to 6:30 p.m. Mongolian barbecue on the Lower Lanai from 6 to 9 p.m. with a steak out and shrimp. "Randy's Mustang" plays oldies but goodies in the Tapa Bar from 6 p.m. to midnight.

SATURDAY — Beef and crab buffet in the Pacific Room from 6 to 8:30 p.m.

SUNDAY — Champagne Brunch in the Pacific Room from 10 a.m. to 1 p.m. with a mini buffet and menu orders. In the evening, Prime Rib and shrimp buffet served.

MONDAY — Lunch in the Pacific Room from 11 a.m. to 1 p.m. Join us Monday through Friday for lunch specials, hot carved sandwiches, soup and salads. Monday evening the club is closed.

TUESDAY — Lunch in the Pacific Room from 11 a.m. to 1 p.m. The Tapa Bar opens from 4 to 10 p.m.

Happy hour from 4:30 to 6:30 p.m. Tuesday evening the dining room is closed.

K-BAY SNCO CLUB

TODAY — Luncheon special is sweet and sour pork. Family Night Buffet is served from 5:30 to 8:30 p.m. "Oldies But Goodies" plays from 8:30 p.m. to midnight.

THURSDAY — Luncheon special is liver, bacon and onion. Mongolian barbecue is served from 5:30 to 8:30 p.m. "Crystal Rose" plays from 8 to 11 p.m.

FRIDAY — Luncheon special is fish and chips. Candlelight dining featuring peel and eat shrimp is served from 6 to 9 p.m. "Wizard" plays from 9 p.m. to 1 a.m.

SATURDAY — Prime rib and crab is served from 6 to 9 p.m. "Request Night" runs from 9 p.m. to 1 a.m.

SUNDAY — Buffet brunch is served from 10 a.m. to 1 p.m. Cook our steak to your perfection over a charcoal grill from 4 to 7 p.m.

MONDAY — Luncheon special is Mexican plate. Happy Hour is from 5 to 6 p.m.

TUESDAY — Luncheon special is meatloaf. Happy Hour is from 5 to 6 p.m.

WINDWARD ENLISTED CLUB

TODAY — Lunch from 11 a.m. to 1 p.m. Dining

Room opens from 5 to 8 p.m. Every Wednesday the Chef's special includes a salad bar. Soul Night featured in the Moongate Lounge.

THURSDAY — Lunch from 11 a.m. to 1 p.m. Dining Room opens from 5 to 8 p.m. with all the beef ribs you can eat. In the Moongate Lounge "Key Willie" plays from 7:30 to 11:30 p.m.

FRIDAY — Lunch from 11 a.m. to 1 p.m. Dining Room opens from 5 to 8 p.m. with prime rib special, prime rib and king crab special or just king crab special. "Movies" plays in the ballroom from 8:30 p.m. to 12:30 a.m.

SATURDAY — Dining Room opens from 5 to 9 p.m. with prime rib special, prime rib and king crab special, or just king crab special. "Star" plays in the Moongate Lounge from 8:30 p.m. to 12:30 a.m.

SUNDAY — Club opens at 11 a.m. Breezy Inn open from 2 to 8 p.m. with prime rib special, prime rib and king crab special, or just king crab special.

MONDAY — Lunch from 11 a.m. to 1 p.m. Dining Room opens from 5 to 8 p.m. with "Italiano Nite" featuring all the spaghetti you can eat. Happy Hour from 5:30 to 7:30 a.m. with free popcorn.

TUESDAY — Lunch from 11 a.m. to 1 p.m. All you can eat smorgasbord every Tuesday night. D.J. plays rock and roll in the Moongate Lounge from 7:30 to 11:30 p.m.



IN MEMORY OF EARLINE — Juanita Schiltz, president of the Kaneohe Outdoor Circle, plants a Royal Poinciana in memory of her late sister, Earline. Two other members of the Outdoor Circle assist during the emotional moment. The tree, located near the Commissary parking lot, will eventually bear scarlet and gold blossoms. The Kaneohe Outdoor Circle consists of 160 members and was founded 26 years ago. Their motto is: "Keep Hawaii Green and Clean." (Photo by Sgt Chris Taylor)

LOW BACK SCHOOL

By
Dr. K.A. Mariano

RATHJEN CLINIC

Spinal Diagnostic and Rehabilitation Center

A FOUR
SESSION
COURSE

For information and
reservations call
524-8655

WED. EVENINGS
BEGINNING
APRIL 7TH



The Lingerie Shop

SPRING IS HERE...SOFT & SEXY!

Come see our new spring merchandise, and ask about our "Preferred Customer Cards" that can save you up to 25% off your next purchase.

944-3994
1423 Kapiolani Blvd.

Mon.-Sat. 10-6, Sun. 10-4 (Parking on Kona St.)
Savory style teddy in leopard print.
S-M-L.

\$2500

Cinema

	W	T	F	S	S	M	T
MCAS Theater	1	2	3	4	5	6	7
Camp Smith Theater	8	7	6	5	4	3	2

- 1. BRUCE LEE'S DEADLY KUNG FU** — Bruce Li, Wang Chue Ta, R. action-drama.
- 2. ANY WHICH WAY YOU CAN** — Clint Eastwood, Sandra Locke, PG, comedy.
- 3. PRINCE OF THE CITY** — Treat Williams, Jerry Arbach, R. drama.
- 4. THE GODSEND** — Malcolm Stoddard, Cyd Hayman, R. horror-drama.
- 5. VON RYAN'S EXPRESS** — Frank Sinatra, Trevor Howard, PG, drama.
- 6. AMERICAN GIGOLO** — Richard Gere, Lauren Hutton, R. drama.
- 7. TATTOO** — Bruce Dern, Maud Adams, R. drama.
- 8. SEEMS LIKE OLD TIMES** — Goldie Hawn, Chevy Chase, PG, comedy.
- 9. THE RIPOFF** — Lee Van Cleef, Karen Black, R. drama.
- 10. THE FIGHTING SULLIVANS** — Anne Baxter, Thomas Mitchell, G. drama.
- 11. FINAL EXAM** — Cecile Bagdadi, Joel S. Rice, R. horror-drama.
- 12. BUDDY BUDDY** — Jack Lemmon, Walter Matthau, R. comedy.

*The Family Theater will present a special showing of JESUS as a Sunday matinee. This free showing starts at 2:30 p.m. and doors open at 2 p.m.

WIN

- 1ST PRIZE \$400**
- 2ND PRIZE \$300**
- 3RD PRIZE \$200**
- 4TH PRIZE \$100**

* PLUS *

- 5000 precious & semi-precious gem stones
- hawaii discount card (lifetime membership)
- tickets to leading shows
- dinners at fine restaurants

BIG DRAWING ON APRIL 15, 1982
no obligation of any kind.
must be 18 years of age to enter.

PHONE 949-2051

OR SEND REGISTRATION
TO: CREATIVE PLANNING CORP.

1750 KALAKAUA AVENUE
CENTURY CENTER, SUITE #3203
HONOLULU, HAWAII 96826

NAME _____

ADDRESS _____

PHONE _____

OCCUPATION _____

AGE _____ MARRIED _____ SINGLE _____

Winston

Nobody does it better.

New 100's pack.

**This is your world.
This is your Winston.
Smooth. Rich.
Taste it all.**

Warning: The Surgeon General Has Determined That Cigarette Smoking Is Dangerous to Your Health.

Salutes



PRESENTED WITH GRATITUDE — First Sergeant James Lewis (right), 3d Reconnaissance Battalion, receives a letter of appreciation from E.C. Phillips, director of Red Cross, MCAS Kaneohe Bay. First Sergeant Lewis is a Water Safety Instructor with the Red Cross. The annual presentation ceremony was held at the Windward Enlisted Club March 21 in appreciation for the many hours of service by Red Cross Volunteers. (Photo by Sgt Chris Taylor)

EDITOR'S NOTE: Salutes is designed to recognize individuals for their achievements and exceptional performance of duty as well as to welcome new arrivals to Hawaii. The information contained herein is compiled from Fleet Home Town News releases submitted to the Joint Public Affairs Office by unit information officers.

H&HS

Promotion:
LCpl D.G. Rapoza
Meritorious Mast:
Sgt D.H. Docktor
Cpl R.A. Gress
PFC C.L. Cottingham
Navy Achievement Medal:
Sgt R.M. Attridge
Letter of Appreciation:
Sgt C.L. Martin

2/3

Welcome Aboard:
2dLt R.L. Brealit
2dLt B.J. Leist
HM1 D.E. Monhaut
Sgt W.C. Gaddy
LCpl B.A. Matheson
LCpl D.C. Pangelinan
PFC R.D. Green
PFC T. Manning
Pvt A.C. Lippman
Promotion:
LCpl R.F. Cole
LCpl R.C. Duha
LCpl J.A. Edwards
LCpl O. Garcia
LCpl R.C. Kelly
LCpl T.E. Phelan
LCpl L.E. Wrice
PFC R. Buckheit
Navy Commendation Medal:
Capt R.S. Rea

3/3

Welcome Aboard:
GySgt J.R. Troglin
SSgt M.R. Maralusha
Sgt R.A. Dominguez
Sgt H.H. Hapin
HM3 R.D. Bingham
Cpl C.L. Cains
Cpl J.A. Eckels Jr.
HN H.A. Gorder
LCpl M.A. Heger
LCpl M.G. Myers
LCpl J.B. Parker
PFC T.M. Booth
PFC D.A. Ferguson
PFC G.R. Leonhardy
PFC G.L. McDonald
PFC W.D. Rose
PFC M.A. Oliphant
PFC D.L. Whetstone
Promotion:
Cpl J.B. May
Cpl F.A. Pinter
Cpl J.E. White
LCpl J.E. Clement
LCpl E. Guarnero III
LCpl D.C. Murphy
LCpl M.T. Schuler
LCpl T.A. Woodward
Certificate of Commendation:
1stLt J.L. Welsh
Completed NBC School:
Sgt L.D. Johnson
LCpl R.J. Brundage
LCpl M.R. Morgan
LCpl W.M. O'Brien
LCpl T.D. Scearce
LCpl S.E. Zinn
PFC L.E. Brengle
PFC S.P. Gargan
PFC M.J. Moriarty Jr.
Completed First Aid and Safety Course:
LCpl W.T. Habacivch
LCpl J.D. Hill
LCpl R.G. Lawson
LCpl B.T. Timblin
LCpl J.A. Vava
PFC J.D. Hatfield
Reenlistment:
SSgt J.H. Matusko
SSgt V.A. Renna Jr.
Sgt J.B. Woolsey
Cpl C. Cardenas Jr.
Cpl J. Turner

Welcome Aboard:
2dLt D.E. Bascom
2dLt M.H. Stroman
Sgt J.R. Hester
PFC A. Louie
Promotion:
Sgt J.L. Palomo
Cpl C.A. Brown
LCpl D.A. Baker
LCpl J.E. Brumfield

Cpl K.A. Lincke
Cpl M.P. Tukuafu
LCpl M.E. Wood
PFC J.E. Balowski
PFC J.W. Martin
PFC D.R. Strohecker
Good Conduct Medal:
Cpl R.L. Brooks

Comm Spt Co

Welcome Aboard:
LCpl D.E. Edmonds
PFC W.C. Hardy
PFC S.S. Petrick
Promotion:
LCpl D.M. McKendrick
PFC S.A. Schoening
Meritorious Mast:
Cpl D.M. Hashida
Cpl D.L. Kauna
Cpl R.P. Ryan
LCpl A.P. Bonus

Letter of Recognition:
Cpl T. Daniels
Cpl J.A. Mowery
LCpl A.P. Bonus
LCpl T.J. Shaw
Marine of the Month:
PFC E.A. Nieves

HMH-463
Welcome Aboard:
PFC K.L. Forbes
Promotion:
Sgt C.L. Johnson
LCpl H. Oliva
PFC J.L. Navarro
Meritorious Promotion:
LCpl W. Cruz
Certificate of Commendation:
Sgt B.C. Wood Jr.
Cpl J.T. Hamilton
Cpl J.S. Hayes
Cpl M.D. Vanover
Courses Completed:
Sgt B.C. Wood Jr.

LCpl P.V. Gallagher
LCpl J.F. Gil
LCpl W.J. Goecke
LCpl N.P. Hanes
LCpl J.W. Lowe
LCpl R. Simms
LCpl D.R. Stemen
LCpl M.A. Towner
LCpl R.L. Worley

HqCo, Bde

Welcome Aboard:
GySgt D.W. Doherty
Sgt C.W. Ogles
Pvt J.N. Maloney
Pvt P.K. Sariego
Promotion:
CWO2 D.L. Robins
LCpl R.M. Babauta
LCpl C.E. Carroll
LCpl L. Nakamura

Meritorious Mast:
LCpl R.J. Murphy
LCpl C.M. Rebeiro
PFC T.L. Adams
PFC M.K. Weik
Navy Achievement Medal:
SSgt M.U. Fejeran
Sgt R. Ricks
Letter of Appreciation:
Capt W.F. Blankenship
MSgt N.R. Kiplinger
Sgt B.E. Moseley
Reenlistment:
Cpl M.A. Simpson

BSSG

Welcome Aboard:
PFC R.J. Carter
Promotion:
Cpl M.A. Simpson



A FORMAL THANK YOU — In appreciation for her service with the Red Cross, Lieutenant Commander Bobbie Graham, Senior Nurse, Kaneohe Branch Clinic, is presented the Mahalo Certificate by Flora Porter, Dispensary Chairwoman with the Red Cross Volunteers, MCAS Kaneohe Bay. (Photo by Sgt Chris Taylor)

Sears



Special Appearance by Winnie-the-Pooh & Tiger

A Benefit Affair presented by Kokokahi YWCA

Entertainment by . . .

- Leeward YWCA Teens — Filipino Dance Groups
- Kokokahi Gymnastics Team
- YWCA Aerobics Group
- YWCA Displaced Homemakers (Clown Act)
- Ka Kapua — Kaneohe Senior Center Slack Key Guitar Group
- Koolau Senior Hui Entertainers
- Choral Chordsmen (Barbershop Quartet)
- Body Dynamics

Door Prizes

- Microwave Oven
- Record Albums
- Coffee Maker
- Digital Watch
- Merchandise Gift Certificates
- Table Fan
- Clock Radio
- Pocket Calculator
- And other prizes

Tickets available at the door and . . .

Kokokahi YWCA
45-035 Kaneohe Bay Drive
247-2124

Sears Kaneohe
Windward City Shopping Center
235-3677

WE BUY

GOLD • SILVER • PLATINUM
DIAMONDS • WATCHES
U.S. & FOREIGN COINS

HONOLULU 746 KAPAHULU 736 2368
KANEHOE 46-218 KAHUHA 247-8477
OPEN 6 DAYS • SAT 8-5

Prestige

CONSOLIDATED THEATRES

KAM DRIVE-IN "SUPER" SWAP MEET
EVERY WED. THUR. SAT. & SUN. 7 AM TO 3 PM • 488-5822

WAIKIKI
Seaside nr. Kaneohe • 923-2304

KAM DRIVE-IN
Moanalua nr. Kam Hwy. • 488-3835

WAIKIKI #3
Kalahehi nr. Seaside • 923-5333

KUMIO
2091 Kumu • 941-4422

PEARL RIDGE
Pearlridge Center • 487-5581

WAIKIKI #4
Kalahehi nr. Seaside • 923-5333

KUMIO
2091 Kumu • 941-4422

PEARL RIDGE
Pearlridge Center • 487-5581

WAIKIKI #5
Kalahehi nr. Seaside • 923-5333

KUMIO
2091 Kumu • 941-4422

PEARL RIDGE
Pearlridge Center • 487-5581

WAIKIKI #6
Kalahehi nr. Seaside • 923-5333

KUMIO
2091 Kumu • 941-4422

PEARL RIDGE
Pearlridge Center • 487-5581

WAIKIKI #7
Kalahehi nr. Seaside • 923-5333

KUMIO
2091 Kumu • 941-4422

PEARL RIDGE
Pearlridge Center • 487-5581

WAIKIKI #8
Kalahehi nr. Seaside • 923-5333

KUMIO
2091 Kumu • 941-4422

PEARL RIDGE
Pearlridge Center • 487-5581

WAIKIKI #9
Kalahehi nr. Seaside • 923-5333

KUMIO
2091 Kumu • 941-4422

PEARL RIDGE
Pearlridge Center • 487-5581

WAIKIKI #10
Kalahehi nr. Seaside • 923-5333

KUMIO
2091 Kumu • 941-4422

PEARL RIDGE
Pearlridge Center • 487-5581

WAIKIKI #11
Kalahehi nr. Seaside • 923-5333

KUMIO
2091 Kumu • 941-4422

PEARL RIDGE
Pearlridge Center • 487-5581

WAIKIKI #12
Kalahehi nr. Seaside • 923-5333

KUMIO
2091 Kumu • 941-4422

PEARL RIDGE
Pearlridge Center • 487-5581

WAIKIKI #13
Kalahehi nr. Seaside • 923-5333

KUMIO
2091 Kumu • 941-4422

PEARL RIDGE
Pearlridge Center • 487-5581

WAIKIKI #14
Kalahehi nr. Seaside • 923-5333

KUMIO
2091 Kumu • 941-4422

PEARL RIDGE
Pearlridge Center • 487-5581

WAIKIKI #15
Kalahehi nr. Seaside • 923-5333

KUMIO
2091 Kumu • 941-4422

PEARL RIDGE
Pearlridge Center • 487-5581

WAIKIKI #16
Kalahehi nr. Seaside • 923-5333

KUMIO
2091 Kumu • 941-4422

PEARL RIDGE
Pearlridge Center • 487-5581

WAIKIKI #17
Kalahehi nr. Seaside • 923-5333

KUMIO
2091 Kumu • 941-4422

PEARL RIDGE
Pearlridge Center • 487-5581

WAIKIKI #18
Kalahehi nr. Seaside • 923-5333

KUMIO
2091 Kumu • 941-4422

PEARL RIDGE
Pearlridge Center • 487-5581

WAIKIKI #19
Kalahehi nr. Seaside • 923-5333

KUMIO
2091 Kumu • 941-4422

PEARL RIDGE
Pearlridge Center • 487-5581

WAIKIKI #20
Kalahehi nr. Seaside • 923-5333

KUMIO
2091 Kumu • 941-4422

PEARL RIDGE
Pearlridge Center • 487-5581

WAIKIKI #21
Kalahehi nr. Seaside • 923-5333

KUMIO
2091 Kumu • 941-4422

PEARL RIDGE
Pearlridge Center • 487-5581

WAIKIKI #22
Kalahehi nr. Seaside • 923-5333

KUMIO
2091 Kumu • 941-4422

PEARL RIDGE
Pearlridge Center • 487-5581

WAIKIKI #23
Kalahehi nr. Seaside • 923-5333

KUMIO
2091 Kumu • 941-4422

PEARL RIDGE
Pearlridge Center • 487-5581

WAIKIKI #24
Kalahehi nr. Seaside • 923-5333

KUMIO
2091 Kumu • 941-4422

PEARL RIDGE
Pearlridge Center • 487-5581

WAIKIKI #25
Kalahehi nr. Seaside • 923-5333

KUMIO
2091 Kumu • 941-4422

PEARL RIDGE
Pearlridge Center • 487-5581

WAIKIKI #26
Kalahehi nr. Seaside • 923-5333

KUMIO
2091 Kumu • 941-4422

PEARL RIDGE
Pearlridge Center • 487-5581

WAIKIKI #27
Kalahehi nr. Seaside • 923-5333

KUMIO
2091 Kumu • 941-4422

PEARL RIDGE
Pearlridge Center • 487-5581

WAIKIKI #28
Kalahehi nr. Seaside • 923-5333

KUMIO
2091 Kumu • 941-4422

PEARL RIDGE
Pearlridge Center • 487-5581

WAIKIKI #29
Kalahehi nr. Seaside • 923-5333

KUMIO
2091 Kumu • 941-4422

PEARL RIDGE
Pearlridge Center • 487-5581

WAIKIKI #30
Kalahehi nr. Seaside • 923-5333

KUMIO
2091 Kumu • 941-4422

PEARL RIDGE
Pearlridge Center • 487-5581

WAIKIKI #31
Kalahehi nr. Seaside • 923-5333

KUMIO
2091 Kumu • 941-4422

PEARL RIDGE
Pearlridge Center • 487-5581

WAIKIKI #32
Kalahehi nr. Seaside • 923-5333

KUMIO
2091 Kumu • 941-4422

PEARL RIDGE
Pearlridge Center • 487-5581

WAIKIKI #33
Kalahehi nr. Seaside • 923-5333

KUMIO
2091 Kumu • 941-4422

PEARL RIDGE
Pearlridge Center • 487-5581

WAIKIKI #34
Kalahehi nr. Seaside • 923-5333

KUMIO
2091 Kumu • 941-4422

PEARL RIDGE
Pearlridge Center • 487-5581

WAIKIKI #35
Kalahehi nr. Seaside • 923-5333

KUMIO
2091 Kumu • 941-4422

PEARL RIDGE
Pearlridge Center • 487-5581

WAIKIKI #36
Kalahehi nr. Seaside • 923-5333

KUMIO
2091 Kumu • 941-4422

PEARL RIDGE
Pearlridge Center • 487-5581

WAIKIKI #37
Kalahehi nr. Seaside • 923-5333

KUMIO
2091 Kumu • 941-4422

PEARL RIDGE
Pearlridge Center • 487-5581

WAIKIKI #38
Kalahehi nr. Seaside • 923-5333

KUMIO
2091 Kumu • 941-4422

PEARL RIDGE
Pearlridge Center • 487-5581

WAIKIKI #39
Kalahehi nr. Seaside • 923-5333

KUMIO
2091 Kumu • 941-4422

PEARL RIDGE
Pearlridge Center • 487-5581

WAIKIKI #40
Kalahehi nr. Seaside • 923-5333

KUMIO
2091 Kumu • 941-4422

PEARL RIDGE
Pearlridge Center • 487-5581

WAIKIKI #41
Kalahehi nr. Seaside • 923-5333

KUMIO
2091 Kumu • 941-4422

PEARL RIDGE
Pearlridge Center • 487-5581

WAIKIKI #42
Kalahehi nr. Seaside • 923-5333

KUMIO
2091 Kumu • 941-4422

PEARL RIDGE
Pearlridge Center • 487-5581

WAIKIKI #43
Kalahehi nr. Seaside • 923-5333

KUMIO
2091 Kumu • 941-4422

PEARL RIDGE
Pearlridge Center • 487-5581

WAIKIKI #44
Kalahehi nr. Seaside • 923-5333

KUMIO
2091 Kumu • 941-4422

PEARL RIDGE
Pearlridge Center • 487-5581

WAIKIKI #45
Kalahehi nr. Seaside • 923-5333

KUMIO
2091 Kumu • 941-4

• 35 PROFESSIONAL SERVICES

KAMAHUA HAULING, reasonable rates. Ph. 235-4206.

GARDENER (University AG Graduate) seeks employment. Windward/South Shore area. Refs. Call 262-5752.

BOOKKEEPER, will reconcile your monthly bank statements for businesses or individuals. \$10. Windward, 262-0263.

PARKER BOOKS: Used paperbacks, new & collectible comics. Buy, sell, trade. 909-A Lehua St., Pearl City. Hours: Tues.-Fri. 10-6 p.m., Sat./Sun. 10-5, closed Mon. 456-4996.

CARPENTRY & home repairs, window, door, free estimates. Ph. 254-2814.

EXPERIENCED student painter, interior/exterior. Free est. Call Howard 262-7841.

CARPENTRY, home repairs. Call Nick 261-7176 or 262-5711.

ROOF REPAIR Gen. Carpentry "We specialize in Difficult jobs" The King's carpenter & repair wk. 845-0397

DOES SOMEONE YOU LOVE NEED HELP? Private duty nursing care in your home or at the hospital. From New Baby to Elderly. No matter what the problem. Fully insured - Professional NURSES & COMPANIONS 24 HOUR SERVICE WESTCLIFF NURSES REGISTRY 262-2392

BOOKKEEPING services for small businesses. Payroll, taxes, bank reconciliation, etc. Call 261-3678.

HANDYMAN, home repairs, painting, plumbing, etc. Call Jim 539-0000 p.m. daily, 261-1823.

HOUSECLEANING by competent, responsible cleaner. Temp. jobs welcome. Call Wendy 261-4926 or mss. 261-4738.

PROFESSIONAL Exp home repair & painting. Reas. rates. Free est. No job too small. Call The Complete Handyman 235-5357.

HAIRSTYLING in your own home, exp. in latest men's & women's hair fashions. Day-evening. Manoa to Kalaheo. Call Linda 531-3161 or 395-3082, ret.

KAUAI'S LEIS & Flowers for all occasions. Specializing in exotic leis. Ph. 261-7184

"ISLAND WIDE MASONRY" Patios, sidewalks, steps, driveways, block wall, stone wall, stucco, fireplaces, very reasonable. FREE Est. 671-4942

ORGAN-PIANO lessons. Kanohe or Honolulu. Private or group lessons. Special programs for adults. Call John Schouten at 247-6010.

PIANO & accordion lessons. Call 423-1252, Pearl Harbor & Foster Village areas.

PIANO Lessons, exp. teacher, Kailua area. Ages 7 & older. Ph. 262-5152.

DANCE Classes, Teens and adults. Jazz. Children combination of Ballet, Tap & Acrobatic. Alina Malina, Hawaii Kai, Kailua. Call 262-9233.

• 45 SCHOOLS & TRAINING

VARGA Flight Training Simulator IFR Training. Rent at low rates. 833-9255 days, 821-3574 even.

YOGA and Massage classes. Tues., Thurs. & Sat., AM/PM. Beginning April 13, Elizabeth Revley 262-9493 Kailua.

STAINED Glass Classes. Beginners and advanced. 4 to 8 weeks. Call 487-1343.

PHONICS, Spelling, Reading. All English skills. Children and adults. Spanish, French, high school level. 262-7242.

FREE Clinic presented by Dr. H. Team Hawaii. Coming to your area the recently acclaimed Dr. H. Team of Hawaii who has just returned from National Competition in Dallas, Texas. Clinics to be presented in Kanohe, Hawaii Kai, Leeward area & town on Apr. 3, 10, 17 & 24. Dr. H. Team Hawaii will have openings for girls 6 to 10 in 1982 and 1983 school year. Call Penny Young 395-6490 or Diane Ackerman 247-4218 for information & reservation.

• 50 BUSINESS OPPORTUNITIES

AMBITIOUS individual to manage own business, full/part time, truly the latest plan, will train. Call for app't. 262-4718.

VIDEO game machine room, all placed & operating, any or all. Ph. Jim, 456-5142.

FOR Better Health & nutrition, call your independent Shaklee Dist. Call today 833-2679.

COCKTAIL Lounge for sale. One of San Bernardino's (Call) finest. Only 2 owners in 31 years. \$120,000 cash income. Inventory, lease, if interested & can qualify. Please call 838-7082 evs.

EARN \$3000 plus \$180 a mo. \$15,000 investment required. Well secured for 11 months. Earn \$9000 plus \$363 mo. \$25,000 investment required. Well secured for 36 months. Call 838-7285.

SMALL INVESTMENT GREAT RETURN Own your own skin care business with Concepti Non Cosmetics. For details, call Jeannette Harris (Unit manager) 624-3723.

THE GLASS SHACK, 25 yr. old cottage Co., manul. glass & resin gifts, \$5900/sacrifice. Incids. glass, work counters, machinery, active accounts & instruction. Call 261-3918.

GOOD Nutrition is hard to find. Let us show you how to make good money & stay healthy too. Call 833-2679.

ALOE VERA JUICE for good health Try our unique McCHOVEN skin care program for beautiful skin.

Retail/Wholesale 235-8395 Independent Representative For McCHOVEN Products

FAMILY Why Hawaii has the perfect product for you MEADOW FRESH — the milk alternate. Tastes like milk, save 1/2 on your milk bill - low calories - low cholesterol - free samples - selling at wholesale to make room for new inventory. Call 239-7922, 239-8744, or 239-5034.

LOOKING FOR THE SECURITY a second income can provide? The path of security is only a decision - a phone call - away! We show you how. Ph. Amway Dist. Sonny at 922-3973 or 833-5821.

WINDWARD PROPERTY MANAGEMENT Ken Mesa CALL 254-4774

• 50 BUSINESS OPPORTUNITIES

AVON GOING INTO THE BEAUTY BUSINESS IS GOOD BUSINESS! Sell Avon and start your own beauty business. Set your own hours. Be your own boss. Earn good money. For details, call 940-3285.

COCKTAIL Lounge for sale. One of San Bernardino's (Call) finest. Only 2 owners in 31 years. \$120,000 cash income. Inventory, lease, if interested & can qualify. Please call 838-7082 evs.

START YOUR OWN BUSINESS Invest less than \$500 Rewarding work Call Harvest 261-8937

• 55 LOANS, LOANS WANTED GET your next loan by mail and phone. No advance fees. No collateral or co-signer needed. Funds can be used for any purpose. Loans from \$1500 to \$10,000. You may qualify. Call 395-1860 between 4-8 p.m. Mon. to Fri.

• 60 HELP WANTED MALE & FEMALE TELEPHONE Solicitors. Call from your home, will average \$5-8 hr 735-6603.

DIRECTOR & Teachers for a Christian Pre-school, BA degree required. 261-0229 or 264-4042.

LOST your TRI-CHEM Liquid embroidery instructor? NEW 1982 SPRING CATALOG Full/part time openings. Ph. 824-9548, 254-4784, 422-9300, 623-0902, 833-7804, 293-9185.

NEED 10 Women to train as fashion stylists. No exp. nec. free wardrobe for those who qualify. Ph. 833-9727.

EXTRA MONEY Military & Local Welcome Part time \$3010 p.m. Nation's largest discount shopping service outlet has sales & delivery positions avail. Duties: sales, stereo, televisions, microwave, etc. Also the buying service for clothing, furniture, sporting goods, auto accessories. Serving well in West, Pearl Harbor, Salt Lake, Waikanae, Two Beach, Barbera Point & KMCAS. Start at \$4.10/hr. or incentive pay plan varies. Call Karol Personnel Office for interview. 833-4576 ask for Mary or 947-5556.

BAND Wanted. Country/Western & 50's. Hauoli Chona Lounge, call for audition 261-5116.

WINWARD COMMUNITY FEDERAL CREDIT UNION Collection person. Experience required. Starting at \$4.75 per hour. Apply: 35 Kameh St., Suite 105 Kailua.

MILITARY WIVES We need part-time workers immediately, to train for our newly established discount outlets. Now is the time to start making extra money for your summer trip home or to bring Grandma over for a Hawaiian vacation. 5:30 p.m.-10 p.m. \$4.50 per hour/incentive plan. For interview ask for Judy. Call 833-2228.

PRE-SCHOOL Teacher, Christian preschool, Assoc. Degree required. Ph. 488-1951.

KUAPAKAI Receptionist-Assist. New optometric otc. must be gregarious w/excl. communication & otc. skills. Will train. 896-7021.

HOUSE CLEAN Maintenance, plumbing & painting. Guarantee Inspection. FREE Estimates. Lower than civilian rates. Call 422-2535 or 422-8914.

• 62 DOMESTIC HELP WANTED BABY sitter wanted for infant in home, Kanohe home. Call 235-1689.

BABYSITTER Needed for 3 month old infant, variable hours. Military area. 623-8328 evs.

• 63 SITUATIONS WANTED WILL BABYSIT in my home. Infant & up, experienced. Ph. 261-3890.

CHRISTIAN mother will do babysitting in my home. 75c hr. for 1 child. 254-5714.

WILL take care of elderly woman during the day, hourly Mon.-Fri. Kailua 261-1382.

CARE given to toddlers in my home, fenced yard, refs. Call 261-7406.

FOR thorough and efficient housecleaning. Call Renee's Detail cleaning. 261-3931.

• 60 HELP WANTED MALE & FEMALE

HOME Partly sales rep or home needed with or without experience. 14K gold jewelry. Call 262-5132.

PEARL CITY, part time driver for weekly newspaper delivery. 455-3868.

NAT'L SALES OFFICE Needs office administrator auto required. 60 WPM, SH pref, heavy phones, TV, inventory control, Gen. clerical duties. Excellent Co. benefits. Salary \$800-\$900 mo. Will accept Mil Dep. w/2-3 yr. tour (incl. HAFB or PH area) Call 833-2795.

MASSAGE Needed for massage parlor in Pearl City Ph. 488-5825, 487-1382.

PROFESSIONAL Phone persons needed, part time, low pressure. Hourly & commission basis. Call 235-6622.

NEEDED Temporary telephone recruiter, night shift only. Must be enthusiastic & reliable. Ph. 262-5124.

RELIABLE person needed for plant nursery work which includes watering, weeding, transplanting, some delivery & other general nursery work. Call 259-7886 between 7:30 a.m. to 4:30 p.m. for interview.

GOOD JOBS ARE AVAILABLE! Professional resumes open doors. Military Specialists. Free estimates. PROFESSIONAL RESUME SERVICE 735 Bishop St. 428 -- 521-7901 26 Years Experience

JOB in Kailua/Kanohe. Call 262-8137, Kailua Employment Service, 787 Kailua Rd., Rm. 207.

FLORAL designer needed. Immediate. Barbers Pt. Flower Shop. Call 624-6173 or 684-5293, must be exp.

WANTED Management trainees, willing to manage own business. Training provided. Serious applicants only. Call 235-8555 for interview.

EARN MORE MONEY NOW Help others & yourself! Full or part time Call Harvest 261-8937

TELEPHONE Solicitors. From your home, call on Military for Federal association, \$5 for a appt. Ph. 247-3166.

NEED Extra income? Earn it in your spare time. Call 488-5667 for appt.

HOW would you like to lose weight & earn money, while doing it? Call 422-6767 and ask for Mike for appt.

• 62 DOMESTIC HELP WANTED BABY sitter wanted for infant in home, Kanohe home. Call 235-1689.

BABYSITTER Needed for 3 month old infant, variable hours. Military area. 623-8328 evs.

• 63 SITUATIONS WANTED WILL BABYSIT in my home. Infant & up, experienced. Ph. 261-3890.

CHRISTIAN mother will do babysitting in my home. 75c hr. for 1 child. 254-5714.

WILL take care of elderly woman during the day, hourly Mon.-Fri. Kailua 261-1382.

CARE given to toddlers in my home, fenced yard, refs. Call 261-7406.

FOR thorough and efficient housecleaning. Call Renee's Detail cleaning. 261-3931.

• 63 SITUATIONS WANTED

EXPERIENCED Babysitter will sit part-time. Ph. 254-1347.

I WILL do child care in my home, fenced yard, hot meals, activities. CR1 254-5178.

WILL Babysit in my home Mon.-Fri. Call 235-4359.

EXP Health food store clerk seeks employment. Prefer Kailua/Kanohe. 261-3125.

• 68 GARAGE & LANAI SALES PLANT Sale Moving, Sat. & Sun, 9 to 5, 47-740-A Hul Kulu St., Kanohe.

GARAGE Sale to help Job! Daughter's, Sat. 4/3, 9-5, 112 Mokapu Blvd., Kailua.

GARAGE Sale, 45-596 Paleka Rd., Kanohe. Ph. 235-3973.

MOVING, turn, misc., cheap! Sat. 1022 Lunalui Pl., Kailua. 262-8695.

GARAGE Sale: 70 PLY. MOUTH station wagon \$500, refrigerator \$140, dryer \$85, washer \$100, color TV \$60, desk \$90, file cabinet \$100, sewing machine, w/cabinet \$125, rattan table & chair, padded mailing envelopes 10' x 16' 35c ea., large dining rm. table \$40, toys & misc. Sat., Apr. 4, 9 to 5, Sun, Apr. 5, 11 to 5, 430 Manono St., Kailua. Ph. 262-9455.

SEVERAL Family garage Sale, 9-3 p.m., Sat. 4/3, 1144 Illiana St., Kailua.

GIANT Garage Sale, T.V., radios, gadgets, baby items, lots of clothes, plants, misc. Sat. only, 8-2 p.m. Corner of Mokapu & Illiani St.

FRI. & SAT., 9-3 p.m. 1633 Ulueo St., Kailua. 261-6685. Sofa \$50, Suva chair \$60, dbl. bed \$20, 2 sm. dressers, mixer, misc. books, toys & kitchen items.

GUARANTEED no roaches, fleas, other pests! Ultrasonic "PET FREE" Solid State \$69.95, Jono Enterprises 537-4311 or 537-5724.

SAT., April 3, Bourbon barrel dinette, coffee & end table, lamps, recliner, scuba equip., antique parlor cabinet, bar stools & misc. 2137 Vancroft Dr. 254-4166 KMCAS.

• 73 APTS. FURNISHED KAILUA, 1 bdrm., bath, Meridian East, pool, amenities, security, view \$275 incl. utils. 261-5002 after 5.

PUNALUU 1 bdrm. on the beach, large covered private lanai, \$400 mo incl. utils, no pets. DWH 737-5571 after 5:30 p.m. 261-2419.

MAKAHA Beach Cabanas, 1 bdrm. lanai, \$315, parking. 261-1962.

9-5, THURS., Fri. & Sat. Household, decorator, collectibles, etc. 377 Aulinala Rd., Kailua.

DON'T Miss This One! Nr. Ench. Lake Shop. Ctr. 1130 Hui St., Sat. 8 to 12.

GARAGE Sale, April 3, 8-2 p.m. Household, clothes, toys, books, Sunline School 354 Ulunui St., Kailua.

YARD SALE, Sat. April 3, 9-3 p.m., 1965-B Dawert Cir., Cailin Park.

MOVING Sale, April 2, 5-8 p.m. April 3, 8-12 noon, 98-1038 Moanaloa Rd., #408, Aiea.

• 68 GARAGE & LANAI SALES

GARAGE Sale, 219 Kakahele St., Kailua, April 3, 9:30 am-2:30 pm, Misc. items.

1178 AKUMU St., Sat. 9-2 p.m. Clothes, coins, desk, cabinets, books, misc.

GARAGE Sale: Doll furn. dols., 18 unit track light system; bicycle, all kinds of goodies, 8 to 4, Sat. April 1, 1343 Kahlili St., Kailua.

9-5, THURS., Fri. & Sat. Household, decorator, collectibles, etc. 377 Aulinala Rd., Kailua.

DON'T Miss This One! Nr. Ench. Lake Shop. Ctr. 1130 Hui St., Sat. 8 to 12.

GARAGE Sale, April 3, 8-2 p.m. Household, clothes, toys, books, Sunline School 354 Ulunui St., Kailua.

YARD SALE, Sat. April 3, 9-3 p.m., 1965-B Dawert Cir., Cailin Park.

MOVING Sale, April 2, 5-8 p.m. April 3, 8-12 noon, 98-1038 Moanaloa Rd., #408, Aiea.

GARAGE SALE Crib, mattress & pad \$45 & up; Stroller \$100; twin, double & single car seats; high chairs, walkers & playpens; 2000 Carter's & Health-Tex children's clothes, sizes 0 to 12 years; diapers; plastic pants; vests; blankets; all babies' needs; changing table; crib sheets; baby swings; biker; periscope; Fisher Price toys & others; Puch moped, runs great. NO PRE-SALES, Sat. & Sun. Apr. 3 & 4, from 9 to 3 p.m., 95-203 Kaopua Ln., Milliani (across from Milliani Golf Course). Call between 9 & 6 623-9863

• 73 APTS. FURNISHED KAILUA, 2 bdrm., bath, unfurn., pool, cable, security, parking, non-smoker, \$450. 262-6955, 262-9945.

KANEOHE, 3 bdrm. apt., \$240. Ph. 235-3840.

KAAAWA, 2 bdrm. apt., \$400/mo., utils. incl. + dep 237-9298.

PARK AT PEARL RIDGE - Penthouse 2 bdrm., 2 bath, 2 cov. parking \$700/mo. Lease Ph. 395-6723, 395-6612.

• 76 RENTALS TO SHARE KANEOHE, partly furnished room, own bath and share kitchen. Female preferred. \$190. Call 235-3743, 247-2495 or 235-5681.

PUNALUU, beachfront studio, pool, parking, utils. \$290/lease. Ph. 261-1574, 261-5807.

PUNALUU Studio on ocean, lanai, pool, \$240 mo. Lease utils. incl. 395-2198.

• 76 RENTALS TO SHARE KANEOHE, 4 bdrm., 2 bath, custom built home, large landscaped yard, pool, 2 car garage, pool & yard serv. incl. \$975 Ph. 262-7130.

KAILUA, 3 bdrm., 2 bath, custom built home, large landscaped yard, pool, 2 car garage, pool & yard serv. incl. \$975 Ph. 262-7130.

KAILUA, 3 bdrm., 2 bath, custom built home, large landscaped yard, pool, 2 car garage, pool & yard serv. incl. \$975 Ph. 262-7130.

KAILUA, 3 bdrm., 2 bath, custom built home, large landscaped yard, pool, 2 car garage, pool & yard serv. incl. \$975 Ph. 262-7130.

KAILUA, 3 bdrm., 2 bath, custom built home, large landscaped yard, pool, 2 car garage, pool & yard serv. incl. \$975 Ph. 262-7130.

KAILUA, 3 bdrm., 2 bath, custom built home, large landscaped yard, pool, 2 car garage, pool & yard serv. incl. \$975 Ph. 262-7130.

KAILUA, 3 bdrm., 2 bath, custom built home, large landscaped yard, pool, 2 car garage, pool & yard serv. incl. \$975 Ph. 262-7130.

KAILUA, 3 bdrm., 2 bath, custom built home, large landscaped yard, pool, 2 car garage, pool & yard serv. incl. \$975 Ph. 262-7130.

KAILUA, 3 bdrm., 2 bath, custom built home, large landscaped yard, pool, 2 car garage, pool & yard serv. incl. \$975 Ph. 262-7130.

KAILUA, 3 bdrm., 2 bath, custom built home, large landscaped yard, pool, 2 car garage, pool & yard serv. incl. \$975 Ph. 262-7130.

KAILUA, 3 bdrm., 2 bath, custom built home, large landscaped yard, pool, 2 car garage, pool & yard serv. incl. \$975 Ph. 262-7130.

KAILUA, 3 bdrm., 2 bath, custom built home, large landscaped yard, pool, 2 car garage, pool & yard serv. incl. \$975 Ph. 262-7130.

KAILUA, 3 bdrm., 2 bath, custom built home, large landscaped yard, pool, 2 car garage, pool & yard serv. incl. \$975 Ph. 262-7130.

KAILUA, 3 bdrm., 2 bath, custom built home, large landscaped yard, pool, 2 car garage, pool & yard serv. incl. \$975 Ph. 262-7130.

KAILUA, 3 bdrm., 2 bath, custom built home, large landscaped yard, pool, 2 car garage, pool & yard serv. incl. \$975 Ph. 262-7130.

KAILUA, 3 bdrm., 2 bath, custom built home, large landscaped yard, pool, 2 car garage, pool & yard serv. incl. \$975 Ph. 262-7130.

KAILUA, 3 bdrm., 2 bath, custom built home, large landscaped yard, pool, 2 car garage, pool & yard serv. incl. \$975 Ph. 262-7130.

KAILUA, 3 bdrm., 2 bath, custom built home, large landscaped yard, pool, 2 car garage, pool & yard serv. incl. \$975 Ph. 262-7130.

KAILUA, 3 bdrm., 2 bath, custom built home, large landscaped yard, pool, 2 car garage, pool & yard serv. incl. \$975 Ph. 262-7130.

K

• 83 HOUSES PARTLY FURNISHED

KALIHU Valley 2 bdrm. house, water included \$350 + dep. Avail. anytime. 261-0443

HAUULA: convenient, 1-bedroom cottage, sundeck, yard. \$295. 949-3441.

KANELOE: 3 bdrm., \$550 a month. Call 235-3202

KAILUA/Lanikai: Cozy cottage, many conveniences, nr. beach, bus. store. Perfect for short term needs. 282-0854

KAILUA: Maunawili, clean, quiet, 3 bdrm., 3 bath duplex in garden setting \$800 mo. water, yard work, drapes, appl. incl. no pets. Refs. required. 281-4374

LANIKAI: Block from beach, 3 bdrm., 2 bath, recently remodeled, \$700 mo. Call 261-3238.

• 84 HOUSESITTING

PROFESSIONAL house sitter, local references, lived Hawaii 8 yrs. 949-4711, 737-5028

• 85 TOWNHOUSES PARTLY FURNISHED

KANELOE, luxury 2 bdrm., 2 bath quiet, view, garage, tennis, pool. \$650. Ph. 215-1973

KAILUA Cove, 3 bdrm., 2 bath, tennis, security, view, \$700. 422-2647, 422-2443

KANELOE Makani Kai 3 bdrm., 2 bath townhouse. All appliances, security gate, pool, like new, view \$650. 235-5767

COLONADE on the Green: 2 bdrm., 2 bath condo, view, trash compactor, refrigerator, washer/dryer, covered parking stall & building security \$575 plus deposit. Call for info after 5 p.m. 455-7976 or 672-4601.

• 87 TOWNHOUSES UNFURN.

EWA BEACH: 2 bdrm. unit, private lanais, military only \$395. 499-2039

• 88 ROOMS FOR RENT

KAILUA room for rent w/kitchen privileges & washing machine. Call 261-3630

2 ROOMS available, townhouse, Kailua access, kitchen, living & laundry \$225 ea. w/ utility deposit required. 254-1107, 839-2795, 261-5057.

KAILUA: Room to rent in house near beach w/pool. \$250 incl. utility. Call 261-2915.

PEARL City: Furnished 2 bdrm. \$250 monthly. Call 689-5315 or 455-4389

• 83 VACATION RENTALS

KULIMA: 1 bdrm., apt., sleeps 4, amenities. Daily/weekly. Mo. Call 235-1481

KAILUA beachside cottage for 2, on private road. \$225 week. Ph. 261-4343

MOLOKAI Wave Crest, sleeps 4, beach, pool, \$30 per day. \$190 per week. Ph. 395-6065

KAILUA: Spacious homes on or near beach. Short or long term. Call 262-0871

KAILUA/Lanikai: Windsurfers, island visitors/cozy cottage many conveniences, nr. beach, bus. store. Weekly & monthly rates. 282-0864

PRIVATE entrance, room & bath, daily/weekly/mo. rates, 1 b.k. to Kailua Bch. 261-5174.

LANIKAI, swim beach, sail, windsurf, deck, gardens, 1 bdrm. \$20 day, \$550 mo. 262-7254.

KAILUA Beach, lovely 3 bdrm. home, avail. June/Aug./Sept. \$1600 mo. 261-8851.

KAILUA: 1 bdrm. cottage, 2 quiet adults only, 1 b.k. to beach \$175/wk., days/mo. rates also. 282-4287

EXCHANGE/rent from owners. Private beach homes, mountain chalets, condos, Hawaii, elsewhere. Free brochure. Holiday Ventures, Box 1510, Kaneohe, HI. 96744

BEACH HOUSE IN Kaaawa 3 bdrm., pool, \$300 per week. Call Cathy Lyman 261-4332

BEACHFRONT Condo, near Crouching Lion, Week, month, pool. Ph. 235-8196

LANIKAI 1 b.k. to beach deck, view, 2 bdrm. furn. w/d linens w/ car incl. April 21-end May. 262-7249.

• 88 RENTALS WANTED

RESPONSIBLE Working couple seek cottage or house in Lanikai or Kailua Beach area. Part time, or unfurn. Under \$500. Call 281-8497

NEED covered parking for 1 car. Vicinity Aiea Maina - Hawaii Kai. 396-8176

• 108 BUSINESS PROPERTY FOR SALE OR RENT

SMALL Spaces in our office in old P.O. Bldg., \$175 incl. utility. Call Sylvia (R) M. Lockridge, inc. 262-5403

SPACIOUS room in Bank of Hawaii Bldg. in Peardridge, avail. for meetings. Call Bea. 487-7961

OFFICE SPACE for rent 550 Sq. Ft. Kailua Pk. Center - 1. Call Pat 262-8107.

• 113 INCOME PROPERTY

PUNA: Very rare 3 acres, low down, long terms, 10 to 20 owner financing, no balloon payment. For sale by owner. 638-7288

• 114 REAL ESTATE FOR SALE

KAILUA GARDENS: Poinciana, 2 bdrm., 2 bath apt., 930 sq. ft. inside, 350 sq. ft. of astro turf lanai. Furnished. \$89,500. Call after 6:30 p.m., 261-0489. For Sale by owner.

13.8% INTEREST 30 year fixed mortgage, qual. ratio at 24 to 1 \$143,000 Private Cui-de-sac... 3 br., 2 ba. 10,675 sq. ft. Bayview/Lilipale Rd. Fee Avail. Owner 521-7772 (B)

ALI Shores, 3 bdrm 2 bath, large deck, wall to wall carpet. Surrounded by fruit trees & coconut trees. Enjoy the cool trade breezes. FHA & VA financing avail. Also A/S for 4 years. 46-167 Hilinea St. \$189,500. Call Gary (RA) 365-4466

• 114 REAL ESTATE FOR SALE

FOSTER Village, 4 bdrm., 2 bath, home 2142 sq. ft. VA. lgn. lanai \$175,000. Assume VA at 10% A/S ok. By owner. 422-9595

BUY With low down payment Get a VA or FHA loan today! Call Judy Anderson (R) 247-5629 Mike McCormack Realtors.

KAILUA: Beautiful view, lg. 3 bdrm. home 2142 sq. ft. VA. \$158,000 by owner. 282-4544.

MINNESOTA: 5 fabulous tree covered acres. Incredible hunting, fishing, farming & snowmobiling. Many lakes. Close to major city. Electric & phone available. \$5000 full price. \$500 down, \$50 a mo. including 10% interest. Call 585-3692

MILANI: Spacious 4 bdrm., 2 1/2 bath townhouse. Tastefully updated w/many extras. Assumable 8% VA \$129,500 Fee. Shown by owner. 623-4498, M. Lockridge, inc. (R) 262-5403

UPPER Makalo: Patehau Vista, 3 bdrm., 2 bath, family room, lanai, 2 car garage, all appliances, priced at appraisal \$145,500. Fee simple, terms open. Shown by owner. Ph. 672-9494 Margaret Lockridge (R).

BROKERS: Open 10 a.m.-12 noon, owners reduction \$133,500 + \$500 to buyers agent. 98-272 U.S. St. #K-2, owners welcome. Flexible financing, graduated VA, FHA lease re-negotiated for 30 yrs. Larger units w/screened in lanai. Every unit you want you'll find an upgrade. Storage garage & your car will be snug in your enclosed garage. 3 bdrm., 2 bath, sheer luxury. Leasehold - MLS43. Karen Prentiss (R) 623-4106 Century 21 Pacific Ltd. 538-3831.

HALAWA Valley, 3 bdrm., 1 1/2 bath, family room, \$124,000/offer. Easy terms, lease, courtesy. 671-4281.

NORTH SHORE-Pupukea/Sunset Hills, custom designed cedar polehouse. 3 Bdrm., 2 bath, tile, custom tub, 3 decks, with 1/3 ocean view, 1.477 acre fee incl. also separate outbuilding w/lot. By owner, courtesies. 638-7082 avcs, or 638-8198.

WANTED: Used or new Army languages. Call 672-9852 after 7 p.m.

SUPER Queen size mummy. For catalog send \$1.00 refund w/order, to Box 122, 1290-D Maunakea, Honolulu, HI 96817

21" COLOR TV \$100. TV Tennis \$15; 8 track portable stereo \$30. 254-2990

ROTO-tiller Sears 4hp motor w/iron drive - like new \$250. commercial huller 17" \$100. Regal 6 home butter & shampooer \$100. Sears canister vacuum cleaner w/all attachments \$35. Call 455-3245.

PORTABLE Toshiba tape player, 2 AM/FM portable radios, \$15 ea. Toshiba juicer/blender, \$40. Ph. 257-0222

CONSULE stereo, 3 yrs. old, \$150/best offer. Call 896-6220

HAVE lingerie party! Invite your friends to see now line of affordable "sexy" lingerie. First 6 to have party will receive \$20 lingerie gift cert. Call today The Lingerie Shop 944-3994

• 116 REAL ESTATE WANTED

HAVE Buyers for properties w/existing VA loans. Catherine Ali (R) 696-6648.

• 120 FURNITURE

KAPOLIANI USED FURNITURE Quality furnishings at rock bottom prices. Come browse. Open Mon. to Sat., 9 to 6, Sun. 10 to 4, 747 Kapiolani Blvd. Ewa between Cooke & Ward. Master & VISA honored. 537-9181

7-PIECE formal dining set, \$599, large matching china cabinet \$399. 488-1985 dir.

BURR settee w/2 matching chairs \$150, maroon recliner \$45, small table w/4 chairs \$60. Kailua call 261-4014

DREXEL Bdrm. set, queen hdd, frame, 5 drawer chest; 2 nite chests. \$275/offer. 833-1879 days. 261-6573 evs.

CUSTOM Family rm. dining set w/6 chairs, \$425; lg. round coffee table, \$125. Ph. 833-1879 days. 261-6573 evs.

ELEGANT 5 pc. wicker living rm. set \$599. Call 488-1985 dir.

TEAK table w/3 leaves & 8 chairs & buffet, \$650/offer. Crib, \$20. 261-8479

BEAUTIFUL Teak rollout desk - new, \$1400. Our price \$1000. 488-1985 dir.

CANE & Rattan living room set, 7 pieces, new. Ph. 254-1042

ZENITH Stereo system w/4 speakers, \$450, waterbed, king, \$450. 526-7156 evs.

WATERBED, flotation, queen, pad \$500 1 yr. ago, \$350 or best offer. Moving, must sell. Ph. 239-8598

RATTAN living room set 5 pcs. \$399. Call 488-1985

7-PIECE Bedroom suite in queen, 4 piece mattress, springs, headboard, bedside tables, dresser and mirror and stackable unit, asking \$1000/best offer. Call 235-8172 or 254-4487 ask for R.C.

WICKER style chest bed with matching 6 drawer dresser \$299. Queen size mattress & box spring - new \$500. Our price \$300. 488-1985 dir.

PARADISE USED FURNITURE Rattan Art Gilding sets \$495, \$675; 4 pc. custom white wicker patio set \$850, 6 pc. rattan bdrm. set w/queen mattress, 4 piece mattress, springs, headboard, bedside tables, dresser and mirror and stackable unit, asking \$1000/best offer. Call 235-8172 or 254-4487 ask for R.C.

HERBALIFE Slim & Trim, all natural herbs supplies all daily nutrients, burns off calories, curb appetite, effective weight loss of 10 to 29 lbs./mo., safe & nutritional product to help you lose weight & maintain a balance diet. Fully guaranteed. Earn money while you lose. Call now 422-4334 after 3 p.m.

6 TRACK Player w/2 speakers, exercise bike, single bed, green shade, dresser, 10 spd. bike. Ph. 261-4265.

STAINED glass window 20 x 31 Air Force command pilot wings, call Steve 422-4548 after 5 p.m.

AMANA Refrigerator, 16 cu. ft., top freezer, warranty, \$395; G.E. Pot scrubber dishwasher, \$75; 14" W.T.V., \$25; 14" single glass doors w/fridge, \$75. Ph. 247-3403

LET'S Have a party. Have a showing of the Princess House Collection in your home & you could get up to 25% buying gifts. 623-1552

NEW BED SALE! TWIN SET COMPLETE \$185.00 DOUBLE SET COMPLETE \$189.00 QUEEN SET COMPLETE \$219.00 KING SET COMPLETE \$325.00 BUNK BEDS \$399.00

Quality Engineer Construction With Quicker Cover "Ask about our purchase option rental plan"

FREE DELIVERY BED RENTALS, HAWAII 3632 WAIALAE AVE (near Bank of Hawaii at Center St. & Kalia Rd.) 735-2666

SPECIALTY Manufacture for "BUTTONS" "RADDERS" "YOUNG" Quick Service 239-7155

• 126 MISCELLANEOUS

HEAT PUMPS Used, re-built, E-Tech efficiency 11 water heating heat pumps at less than 50% cost. SAVE ON ELECTRICITY. Call 247-4601. Service and repair work done.

GLASS TOP cocktail tables \$45 to \$65 custom-made choice of colors. 677-5159, 677-9007.

KAMA'AINA USED FURNITURE Bookcase bunk bed set \$150. w/queen mattress bed \$200. excel. cond. cedar chest \$125; Drexel bookcases \$59 ea.; 6 pc. brown velvet modular liv. rm. set \$399; bar stools; lamps; nightstand & beds - all sizes & much more. 488-1985 (behind Corder Ford Aiea)

KAMA'AINA USED FURNITURE Now buying all types of furniture. Top cash. 488-1985

\$\$\$ CASH \$\$\$ for used furniture - beds, Rattan & wicker. 537-9181, 537-3212 anytime

VACUUM Cleaners, with guarantee, \$19.95 & up. Ph. 456-4211, 955-8854.

AIRPLANE rides, take a one hour flight around Oahu. 3 people \$45 total. 254-5090

• 126 MISCELLANEOUS

ROY'S LAWN MOWER REPAIR "Free Estimate" Lawn mowers for sale. Rotary \$85, Reel \$125. Guaranteed 259-5927

WANTED: Used or new Army languages. Call 672-9852 after 7 p.m.

SUPER Queen size mummy. For catalog send \$1.00 refund w/order, to Box 122, 1290-D Maunakea, Honolulu, HI 96817

21" COLOR TV \$100. TV Tennis \$15; 8 track portable stereo \$30. 254-2990

ROTO-tiller Sears 4hp motor w/iron drive - like new \$250. commercial huller 17" \$100. Regal 6 home butter & shampooer \$100. Sears canister vacuum cleaner w/all attachments \$35. Call 455-3245.

PORTABLE Toshiba tape player, 2 AM/FM portable radios, \$15 ea. Toshiba juicer/blender, \$40. Ph. 257-0222

CONSULE stereo, 3 yrs. old, \$150/best offer. Call 896-6220

HAVE lingerie party! Invite your friends to see now line of affordable "sexy" lingerie. First 6 to have party will receive \$20 lingerie gift cert. Call today The Lingerie Shop 944-3994

WANTED: Used or new Army languages. Call 672-9852 after 7 p.m.

SUPER Queen size mummy. For catalog send \$1.00 refund w/order, to Box 122, 1290-D Maunakea, Honolulu, HI 96817

21" COLOR TV \$100. TV Tennis \$15; 8 track portable stereo \$30. 254-2990

ROTO-tiller Sears 4hp motor w/iron drive - like new \$250. commercial huller 17" \$100. Regal 6 home butter & shampooer \$100. Sears canister vacuum cleaner w/all attachments \$35. Call 455-3245.

PORTABLE Toshiba tape player, 2 AM/FM portable radios, \$15 ea. Toshiba juicer/blender, \$40. Ph. 257-0222

CONSULE stereo, 3 yrs. old, \$150/best offer. Call 896-6220

HAVE lingerie party! Invite your friends to see now line of affordable "sexy" lingerie. First 6 to have party will receive \$20 lingerie gift cert. Call today The Lingerie Shop 944-3994

WANTED: Used or new Army languages. Call 672-9852 after 7 p.m.

SUPER Queen size mummy. For catalog send \$1.00 refund w/order, to Box 122, 1290-D Maunakea, Honolulu, HI 96817

21" COLOR TV \$100. TV Tennis \$15; 8 track portable stereo \$30. 254-2990

ROTO-tiller Sears 4hp motor w/iron drive - like new \$250. commercial huller 17" \$100. Regal 6 home butter & shampooer \$100. Sears canister vacuum cleaner w/all attachments \$35. Call 455-3245.

PORTABLE Toshiba tape player, 2 AM/FM portable radios, \$15 ea. Toshiba juicer/blender, \$40. Ph. 257-0222

CONSULE stereo, 3 yrs. old, \$150/best offer. Call 896-6220

HAVE lingerie party! Invite your friends to see now line of affordable "sexy" lingerie. First 6 to have party will receive \$20 lingerie gift cert. Call today The Lingerie Shop 944-3994

WANTED: Used or new Army languages. Call 672-9852 after 7 p.m.

SUPER Queen size mummy. For catalog send \$1.00 refund w/order, to Box 122, 1290-D Maunakea, Honolulu, HI 96817

21" COLOR TV \$100. TV Tennis \$15; 8 track portable stereo \$30. 254-2990

ROTO-tiller Sears 4hp motor w/iron drive - like new \$250. commercial huller 17" \$100. Regal 6 home butter & shampooer \$100. Sears canister vacuum cleaner w/all attachments \$35. Call 455-3245.

PORTABLE Toshiba tape player, 2 AM/FM portable radios, \$15 ea. Toshiba juicer/blender, \$40. Ph. 257-0222

CONSULE stereo, 3 yrs. old, \$150/best offer. Call 896-6220

HAVE lingerie party! Invite your friends to see now line of affordable "sexy" lingerie. First 6 to have party will receive \$20 lingerie gift cert. Call today The Lingerie Shop 944-3994

WANTED: Used or new Army languages. Call 672-9852 after 7 p.m.

SUPER Queen size mummy. For catalog send \$1.00 refund w/order, to Box 122, 1290-D Maunakea, Honolulu, HI 96817

21" COLOR TV \$100. TV Tennis \$15; 8 track portable stereo \$30. 254-2990

ROTO-tiller Sears 4hp motor w/iron drive - like new \$250. commercial huller 17" \$100. Regal 6 home butter & shampooer \$100. Sears canister vacuum cleaner w/all attachments \$35. Call 455-3245.

PORTABLE Toshiba tape player, 2 AM/FM portable radios, \$15 ea. Toshiba juicer/blender, \$40. Ph. 257-0222

CONSULE stereo, 3 yrs. old, \$150/best offer. Call 896-6220

HAVE lingerie party! Invite your friends to see now line of affordable "sexy" lingerie. First 6 to have party will receive \$20 lingerie gift cert. Call today The Lingerie Shop 944-3994

• 127 APPLIANCES

REFRIGERATOR 17 cu. ft. white \$150, 1 refrigerator 6 cu. ft. \$75; electric range white, 21" \$175. All in good condition. Ph. 235-8286

SEARS Black & white TV, \$35; Ping-Pong table + acc., \$20; Red head racket, unstrung, \$15; 235-8371.

CEILING FANS, best buy this year, 50% Off. Ph. 261-8813

GUARANTEED no roaches, fleas, other pests. Ultraonic "PEST-FREE" Solu State. \$69.95 Jono Enterprises 537-4311 or 537-5724

\$500 for #3 or #8 in \$1000 game of Foodland Bingo. Call 628-2245.

3 OF The best buys on the Island! Minolta SRT200 camera 3 lenses & carrying case, \$275 firm. Double mattress, box & frame, extra clean, \$99; 13" color TV, \$125; & other items. 625-2288 weekdays after 4 p.m., weekends anytime.

COLLECTOR'S Items 7 old books around 1908 Chaucer, Melville, etc. 239-6085

TWIN Bed, like new, \$75; Hobie Cat, 12', \$1000. Ph. 281-3238.

SOLID Oak upright piano, very good cond., \$900/offer. 262-4322

8 OZ. Pol towels: 1-throw net, 2" mesh; 1-8" mounted Texas Longhorn. Call 261-6069.

BEDROOM Set, \$180; Boys' bike, \$700; Lamp, \$15. Ph. 395-7786.

SANKYO EMOBOX, super 8mm movie camera, used once, tripod worth \$450 now, asking \$250 firm. Surfboard, 6'2" H.I.C. like new, \$90 firm. Call Howard 262-7841.

• 127 APPLIANCES

MAYTAG washer \$125/offer good working order. 625-0054.

SEARS Coldspot 19.4 refriger./freezer, frostfree, auto. ice maker, \$125. Ph. 262-7039.

WHIRLPOOL Dryer, G.E. Washer, \$300 both. Ph. 422-9619.

9 CU. ft. refrigerator, good condition \$100. Call 254-5475

FREEZER, Sears frostless, 16 cu. ft., perfect cond., \$250. Ph. 696-2726.

• 136 MISCELLANEOUS WANTED

CASH for Lawn Mowers & Outdoor Motors. Any Condition. Ph. 239-5927

WE BUY used furniture. We pay cash and pickup. Call 261-8492 or 261-1406

WANTED: used Merryllite, Call Leona 235-5881 a.m., 732-2

151 PET SUPPLIES & SERVICE

EASTER bunnies (different colors), ducklings (Peking), chicks (different varieties). Limited quantities 637-6638, no calls after 9 pm.

HERD of goats for sale, Toggs, Nubians, & Goats w/ kids. For info, call 668-1495.

AKC, Doberman pups, 6 gen pedigree 250, rads & black, males/females. 250-1774

GERMAN Shepherd pups, 6 gen pedigree 6 wks, no papers \$20. Call Now! 488-4426

WANTED: Shetland pony w/ no tack, trained or not. Call 621-6104 morn. & late evenings.

GUARANTEED no roaches, fleas, other pests. Ultrasonic "Pest-Free" Solid State. \$99.95 Jono Enterprises 637-4311 or 537-5724

156 AUTO PARTS & SERVICE

'66 VW ENGINE, best offer. Ph. 261-3773.

MOPAR 140D3 transmission/parts, ED 7, rims/wires \$100. Mark, 373-2472

BATTERY FACTORY AUTO BATTERIES '20
747 Kapiolani Blvd. Ph. 533-3317

161 AUTOS WANTED

WANTED: Car or truck, running or not. Will pay up to \$500 Ph. 396-8182

166 PICKUPS, TRUCKS

'71 DATSUN Pickup \$300. As is. Call 261-6661 or 262-8502

'77 TOYOTA SR5 pick-up, mags, slide back window, new paint, 37,000 mi., excel cond., Ph. 261-3892 eves/wkends.

BANK REPOSESSION
'76 Dodge Pickup, auto, power steering, camper top, mags/wheel tires 14561C1 \$275 cash down pymt. - tax & lic. OAC Repossession price \$3981.42. See repossession mgr.

WHOLESALE MOTORS
Ph. 836-1222 2999 N. Nimitz Hwy.

'79 CHEVY Pickup
std., 6 cyl., power steering, stereo, excel. clean [JB27BU]
\$4975
WHOLESALE MOTORS
836-1222 2999 N. Nimitz Hwy.

171 MOTORCYCLE SALES & SERVICE

'75 HONDA CB360, headers, windshield, new battery \$375/offer. 261-9458 eves.

'81 YAMAHA XS40011
[H1252]. Need a low cost, low mi., bike that's sharp looking.
THIS IS IT!
Sale price \$886 + tax, lic. & OH.
CYCLE CITY LTD.
836-3901

BANK REPOSESSION
'78 KAWASAKI 750cc. (H621) \$193.83 down pymt. - tax, lic. & OH. OAC Repossession price \$986.36.
CYCLE CITY LTD.
836-3901

'78 HONDA Hawk, 400cc, in excel. cond., \$900. Call Mac, 235-1732 eves.

'81 PUCIT, low milo., excel. cond. \$695. Call 395-6870 after 5 p.m.

'80 YAMAHA, 650 special, mint, only 2800 mi., many extras, \$1895, 395-4793

CYCLE CITY WE BUY BIKES
Harley Davidson-Kawasakis
2965 N. Nimitz 836-3901

'82 KAWASAKI KZ750cc
All new & best in its class with phenomenal performance. Introductory price \$2299 - tax, lic. & OH. Bank financing available.
CYCLE CITY LTD.
2965 N. Nimitz Hwy. 836-3901

FOR Sale: 1981 Yamaha XS400 Special 3000 ml. 125 new, Asking \$1800. Call Torri 872-8771

'78 HONDA CX500 custom 13,000 mi. \$1800/best offer. 471-9693 days, 487-3057 eves.

TS 125 Suzuki dirt & road bike, \$900 or best offer. Call after 6 pm, 239-5462

DEMO SALE
'81 KZ1000, 1200, 1984. This long, low lean & mean machine is something special. From the rubber engine mounts to the pull back handgrips & low-slung seats, this is the ultimate street cruiser. Yours for \$3499 - tax, lic. & OH. We can help you with financing.
CYCLE CITY LTD.
836-3901

BANK REPOSESSION
'81 KAWASAKI 550L TD [H985] \$206.41 down pymt. - tax, lic. & OH. OAC Repossession price \$1986.83.
CYCLE CITY LTD.
2965 N. Nimitz Hwy. 836-3901

YAMAHA moped for sale, new \$400. After working hrs. 487-3425.

'80 YAMAHA XT100, black low milo., excel. cond. Call AWB 621-5177 \$3200.

'78 HARLEY Davidson Sportster, low milo., \$3300. Ph. 456-4732

NEW '81 KAWASAKI KZ250
If you want the best in a 250cc Cycle this is it! Only 8 units left at **THE SALE PRICE OF \$1099** - tax, lic. & OH.
CYCLE CITY LTD.
2965 N. Nimitz Hwy. 836-3901

'78 HONDA 750K
[H982] This black beauty has it all, custom exhaust, saddle bags, power windows, mags, crash bars & more! This sharp machine is yours for \$1275 - tax & lic. OH.
CYCLE CITY LTD.
836-3901

171 MOTORCYCLE SALES & SERVICE

'82 YAMAHA 175 Enduro, great condition. Runs great. \$450, 254-5122

'85 HONDA ATC, \$1200 or best offer. Call Carl after 6 p.m., 281-6050

'81 KAWASAKI KZ1000
[H1031] This factory fresh red rock w/ leather lining is the highest & latest sport bike in its class. This machine is yours for \$3295 - tax, lic. & OH. We can help you with financing.
CYCLE CITY LTD.
836-3901

175 VANS, CAMPERS & JEEPS
82 SUZUKI 4 wheel drive, hardtop, tinted glass, rustproofed, AM/FM. Earl 524-6150 or 395-8627

JEEPS, CARS, PICKUPS
from \$35. Avail. at local Gov't Auctions. For Directory call Surplus Data Center (415) 390-7900.

'73 VW CAMPER Pop-Top, auto, trans., excellent interior. AM/FM, 8 track, \$3000/offer. 624-4582

'80 JEEP
4 x 4 Pickup J20, loaded. w/only 10,200 mi. Clean [H697CV]
\$6975
WHOLESALE MOTORS
836-1222 2999 N. Nimitz Hwy.

'77 RAM Charger
4 x 4 hdp., loaded with accessories, extra sharp! [P2130D]
\$4975
WHOLESALE MOTORS
836-1222 2999 N. Nimitz Hwy.

'77 CUSTOMIZED Chevy van, 10n, excel. accessories/parts, as is \$1000/offer. 239-6017 eves.

176 AUTOS FOR SALE

AMC
'73 AMBASSADOR, 4 dr., a/c, p/b, p/s, now brakes/tires. \$1195. 833-7323

'80 CONCORD
Wagon DL, 6 cyl., auto, steering, air, stereo, rock, etc. [BAU15B]
\$4775
WHOLESALE MOTORS
Ph. 836-1222 2999 N. Nimitz Hwy.

AUDI
'78 AUDI 5000, sunroof, power windows, power lock, AM/FM tape, newly painted, mint cond. \$6850 262-6097.

DAVE'S BEST CHEVY BUY
STK #R172 DAVE BARRETT
'80 CITATION coupe, 4 spd., sunroof, yellow, black interior, low mileage, Kelly High 5545.
BAY'S LOW - \$4685
RAY CHEVY-MAZDA Kaneohe 235-3621

'78 CAMARO
auto., steering, air, stereo, clean [JAB250]
\$4275
WHOLESALE MOTORS
836-1222 2999 N. Nimitz Hwy.

'79 VETTE
T-top, all power, air, stereo - 68 radio, auto cruise control, 111 wheel, mags/wide 6T radials with only 13,455 mi. [H6B519] \$11,475
WHOLESALE MOTORS
2999 N. Nimitz Hwy. Ph. 836-1222

'79 NEWPORT
5 dr., auto., power steering, air, clean [MD512]
\$3775
WHOLESALE MOTORS
Ph. 836-1222 2999 N. Nimitz Hwy.

'78 CORDOBA
Take Ricardo's word & own one of these reasonably priced cars. Loaded: air, p/w, tilt steering, 2 vinyl top, & AM/FM [BJV969] \$2495. Jim Simons Imports 487-7974

'79 DART
4 door, sedan, 6 cyl., auto. Great for the large family.
BAY'S LOW - \$2295
RAY CHEVY-MAZDA Kaneohe 235-3621

GOING TO OREGON to buy a new car or pickup?
- contact -
ROBERTS & REDFIELD PORTLAND
Write for price lists and full information.
ANY MAKE - ANY MODEL
Delivered - road tested at Portland International Airport
ROBERTS & REDFIELD
Suite #102
6629 N.E. 82nd
Portland, Oregon 97220
(503) 257-0551
Conveniently located just 3 minutes from Airport

'79 DART
4 door, sedan, 6 cyl., auto. Great for the large family.
BAY'S LOW - \$2295
RAY CHEVY-MAZDA Kaneohe 235-3621

'79 DART
4 door, sedan, 6 cyl., auto. Great for the large family.
BAY'S LOW - \$2295
RAY CHEVY-MAZDA Kaneohe 235-3621

'79 DART
4 door, sedan, 6 cyl., auto. Great for the large family.
BAY'S LOW - \$2295
RAY CHEVY-MAZDA Kaneohe 235-3621

'79 DART
4 door, sedan, 6 cyl., auto. Great for the large family.
BAY'S LOW - \$2295
RAY CHEVY-MAZDA Kaneohe 235-3621

'79 DART
4 door, sedan, 6 cyl., auto. Great for the large family.
BAY'S LOW - \$2295
RAY CHEVY-MAZDA Kaneohe 235-3621

'79 DART
4 door, sedan, 6 cyl., auto. Great for the large family.
BAY'S LOW - \$2295
RAY CHEVY-MAZDA Kaneohe 235-3621

'79 DART
4 door, sedan, 6 cyl., auto. Great for the large family.
BAY'S LOW - \$2295
RAY CHEVY-MAZDA Kaneohe 235-3621

'79 DART
4 door, sedan, 6 cyl., auto. Great for the large family.
BAY'S LOW - \$2295
RAY CHEVY-MAZDA Kaneohe 235-3621

'79 DART
4 door, sedan, 6 cyl., auto. Great for the large family.
BAY'S LOW - \$2295
RAY CHEVY-MAZDA Kaneohe 235-3621

'79 DART
4 door, sedan, 6 cyl., auto. Great for the large family.
BAY'S LOW - \$2295
RAY CHEVY-MAZDA Kaneohe 235-3621

'79 DART
4 door, sedan, 6 cyl., auto. Great for the large family.
BAY'S LOW - \$2295
RAY CHEVY-MAZDA Kaneohe 235-3621

'79 DART
4 door, sedan, 6 cyl., auto. Great for the large family.
BAY'S LOW - \$2295
RAY CHEVY-MAZDA Kaneohe 235-3621

'79 DART
4 door, sedan, 6 cyl., auto. Great for the large family.
BAY'S LOW - \$2295
RAY CHEVY-MAZDA Kaneohe 235-3621

'79 DART
4 door, sedan, 6 cyl., auto. Great for the large family.
BAY'S LOW - \$2295
RAY CHEVY-MAZDA Kaneohe 235-3621

'79 DART
4 door, sedan, 6 cyl., auto. Great for the large family.
BAY'S LOW - \$2295
RAY CHEVY-MAZDA Kaneohe 235-3621

AUSTIN HEALEY

'60 CLASSIC Austin Healey (Bugeye) Sprite, rebuilt, excel. condition, body, red beauty, excel cond. \$3500 696-2934

BUICK

'74 BUICK Regal, 4 dr., AM/FM radio, good running condition \$1100/offer. Call 247-3016 9 a.m. to 9 p.m.

'77 BUICK Regal, sunroof, stereo, extra clean. BFJ100 Only \$2995 Jim Simons Imports 487-7974

'67 BUICK Special, 4 dr., showroom condition, must see! \$1200/offer. Ph. 955-4256

BANK REPOSESSION
'79 Regal 4 dr., luxuriously eqpt [H6310] \$125 cash down pymt. - tax & lic. OAC Repossession price \$3798.23. See repossession mgr.
WHOLESALE MOTORS
Ph. 836-1222 2999 N. Nimitz Hwy.

DAVE'S BEST CHEVY BUY
STK #2949A DAVE BARRETT
'81 SHORT WB Carpet, custom cassette stereo, only 13,000 miles, automatic. Make your offer! I can't refuse.
BAY'S LOW - \$3995
RAY CHEVY-MAZDA Kaneohe 235-3621

'79 ELECTRA
Park Avenue 4 dr. luxuriously eqpt. [P21301] \$125 cash down pymt. - tax & lic. OAC Repossession price \$3995.82. See repossession mgr.
WHOLESALE MOTORS
Ph. 836-1222 2999 N. Nimitz Hwy.

'75 IMPALA
4 dr., \$895, Ph. 261-1962.

'74 CHEVY Monte Carlo, 2 dr. sdn, good cond, clean, \$2000 or best offer. Ph. 259-7232 after 5 pm

'71 MALIBU 350, 4 dr. hdp. power steering, good cond., \$900. Ph. 737-2374

'67 CHEVROLET \$600. Call 239-7749.

'78 Monte Carlo with warranty \$3895. National Car World 841-4261

DAVE'S BEST CHEVY BUY
STK #R172 DAVE BARRETT
'80 CITATION coupe, 4 spd., sunroof, yellow, black interior, low mileage, Kelly High 5545.
BAY'S LOW - \$4685
RAY CHEVY-MAZDA Kaneohe 235-3621

'78 CAMARO
auto., steering, air, stereo, clean [JAB250]
\$4275
WHOLESALE MOTORS
836-1222 2999 N. Nimitz Hwy.

'79 VETTE
T-top, all power, air, stereo - 68 radio, auto cruise control, 111 wheel, mags/wide 6T radials with only 13,455 mi. [H6B519] \$11,475
WHOLESALE MOTORS
2999 N. Nimitz Hwy. Ph. 836-1222

'79 NEWPORT
5 dr., auto., power steering, air, clean [MD512]
\$3775
WHOLESALE MOTORS
Ph. 836-1222 2999 N. Nimitz Hwy.

'78 CORDOBA
Take Ricardo's word & own one of these reasonably priced cars. Loaded: air, p/w, tilt steering, 2 vinyl top, & AM/FM [BJV969] \$2495. Jim Simons Imports 487-7974

'79 DART
4 door, sedan, 6 cyl., auto. Great for the large family.
BAY'S LOW - \$2295
RAY CHEVY-MAZDA Kaneohe 235-3621

'79 DART
4 door, sedan, 6 cyl., auto. Great for the large family.
BAY'S LOW - \$2295
RAY CHEVY-MAZDA Kaneohe 235-3621

'79 DART
4 door, sedan, 6 cyl., auto. Great for the large family.
BAY'S LOW - \$2295
RAY CHEVY-MAZDA Kaneohe 235-3621

'79 DART
4 door, sedan, 6 cyl., auto. Great for the large family.
BAY'S LOW - \$2295
RAY CHEVY-MAZDA Kaneohe 235-3621

'79 DART
4 door, sedan, 6 cyl., auto. Great for the large family.
BAY'S LOW - \$2295
RAY CHEVY-MAZDA Kaneohe 235-3621

'79 DART
4 door, sedan, 6 cyl., auto. Great for the large family.
BAY'S LOW - \$2295
RAY CHEVY-MAZDA Kaneohe 235-3621

'79 DART
4 door, sedan, 6 cyl., auto. Great for the large family.
BAY'S LOW - \$2295
RAY CHEVY-MAZDA Kaneohe 235-3621

'79 DART
4 door, sedan, 6 cyl., auto. Great for the large family.
BAY'S LOW - \$2295
RAY CHEVY-MAZDA Kaneohe 235-3621

'79 DART
4 door, sedan, 6 cyl., auto. Great for the large family.
BAY'S LOW - \$2295
RAY CHEVY-MAZDA Kaneohe 235-3621

'79 DART
4 door, sedan, 6 cyl., auto. Great for the large family.
BAY'S LOW - \$2295
RAY CHEVY-MAZDA Kaneohe 235-3621

'79 DART
4 door, sedan, 6 cyl., auto. Great for the large family.
BAY'S LOW - \$2295
RAY CHEVY-MAZDA Kaneohe 235-3621

'79 DART
4 door, sedan, 6 cyl., auto. Great for the large family.
BAY'S LOW - \$2295
RAY CHEVY-MAZDA Kaneohe 235-3621

'79 DART
4 door, sedan, 6 cyl., auto. Great for the large family.
BAY'S LOW - \$2295
RAY CHEVY-MAZDA Kaneohe 235-3621

'79 DART
4 door, sedan, 6 cyl., auto. Great for the large family.
BAY'S LOW - \$2295
RAY CHEVY-MAZDA Kaneohe 235-3621

'79 DART
4 door, sedan, 6 cyl., auto. Great for the large family.
BAY'S LOW - \$2295
RAY CHEVY-MAZDA Kaneohe 235-3621

'79 DART
4 door, sedan, 6 cyl., auto. Great for the large family.
BAY'S LOW - \$2295
RAY CHEVY-MAZDA Kaneohe 235-3621

'79 DART
4 door, sedan, 6 cyl., auto. Great for the large family.
BAY'S LOW - \$2295
RAY CHEVY-MAZDA Kaneohe 235-3621

CHEVROLET

DAVE'S TOPLESS CHOICE
STK #6648 DAVE BARRETT
'79 BLAZER 4 WD only 13,000 miles, no top high profile. Knobby tires.
BAY'S LOW - \$3795
RAY CHEVY-MAZDA Kaneohe 235-3621

'81 IMPERIAL
2 dr., silver/red leather seats. luxuriously eqpt. w/only 1981 mi. like new [BRE185]
\$17,775
WHOLESALE MOTORS
Ph. 836-1222 2999 N. Nimitz Hwy.

DAVE'S BEST CHEVY BUY
STK #2949A DAVE BARRETT
'81 SHORT WB Carpet, custom cassette stereo, only 13,000 miles, automatic. Make your offer! I can't refuse.
BAY'S LOW - \$3995
RAY CHEVY-MAZDA Kaneohe 235-3621

'79 ELECTRA
Park Avenue 4 dr. luxuriously eqpt. [P21301] \$125 cash down pymt. - tax & lic. OAC Repossession price \$3995.82. See repossession mgr.
WHOLESALE MOTORS
Ph. 836-1222 2999 N. Nimitz Hwy.

'75 IMPALA
4 dr., \$895, Ph. 261-1962.

'74 CHEVY Monte Carlo, 2 dr. sdn, good cond, clean, \$2000 or best offer. Ph. 259-7232 after 5 pm

'71 MALIBU 350, 4 dr. hdp. power steering, good cond., \$900. Ph. 737-2374

'67 CHEVROLET \$600. Call 239-7749.

'78 Monte Carlo with warranty \$3895. National Car World 841-4261

DAVE'S BEST CHEVY BUY
STK #R172 DAVE BARRETT
'80 CITATION coupe, 4 spd., sunroof, yellow, black interior, low mileage, Kelly High 5545.
BAY'S LOW - \$4685
RAY CHEVY-MAZDA Kaneohe 235-3621

'78 CAMARO
auto., steering, air, stereo, clean [JAB250]
\$4275
WHOLESALE MOTORS
836-1222 2999 N. Nimitz Hwy.

'79 VETTE
T-top, all power, air, stereo - 68 radio, auto cruise control, 111 wheel, mags/wide 6T radials with only 13,455 mi. [H6B519] \$11,475
WHOLESALE MOTORS
2999 N. Nimitz Hwy. Ph. 836-1222

'79 NEWPORT
5 dr., auto., power steering, air, clean [MD512]
\$3775
WHOLESALE MOTORS
Ph. 836-1222 2999 N. Nimitz Hwy.

'78 CORDOBA
Take Ricardo's word & own one of these reasonably priced cars. Loaded: air, p/w, tilt steering, 2 vinyl top, & AM/FM [BJV969] \$2495. Jim Simons Imports 487-7974

'79 DART
4 door, sedan, 6 cyl., auto. Great for the large family.
BAY'S LOW - \$2295
RAY CHEVY-MAZDA Kaneohe 235-3621

'79 DART
4 door, sedan, 6 cyl., auto. Great for the large family.
BAY'S LOW - \$2295
RAY CHEVY-MAZDA Kaneohe 235-3621

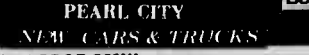
'79 DART
4 door, sedan, 6 cyl., auto. Great for the large family.
BAY'S LOW - \$2295
RAY CHEVY-MAZDA Kaneohe 235-3621

'79 DART
4 door, sedan, 6 cyl., auto. Great for the large family.
BAY'S LOW - \$2295
RAY CHEVY-MAZDA Kaneohe 235-3621

'79 DART
4 door, sedan, 6 cyl., auto. Great for the large family.
BAY'S LOW - \$2295
RAY CHEVY-MAZDA Kaneohe 235-3621

'79 DART
4 door, sedan, 6 cyl., auto. Great for the large family.
BAY'S LOW - \$2295
RAY CHEVY-MAZDA Kaneohe 235-3621

'79 DART
4 door, sedan,



CUTTER DODGE

PEARL CITY

NEW CARS & TRUCKS

'81 DODGE OMNI As Del. #18081. Retail \$7863. Sale Price:	'6699
'81 D-150 DODGE Upline 1/2 ton pickup #18184 Retail \$9313. Sale Price:	'6967

SELECTED USED CARS

'71 PLYMOUTH Valiant AS7564. Sale Price	'295
'77 DODGE Aspen BNR318. Sale Price	'1795
'71 DODGE Demon ACV087. Sale Price	'995
'73 MERCURY Marquis BBJ647. Sale Price	'495
'75 PONTIAC Firebird ASM999. Sale Price	'1595

Offer good Mar. 31 to Apr. 5

History Financing Our Specialty
 First Hawaiian Bank Branch of Hawaii Financing
 Cars Sold \$5.11 * Plus Tax & Lic

922 Kaim Hwy. 455 1071

PEARL CITY (Across Pearl City Tavern)

Mon. Sat. 10:30 - 5:00 Sun. 10 - 6

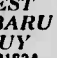
WE'RE BUYING USED CARS

BUY A USED CAR WITHOUT GETTING USED

NEWER USED CARS FOR EVEN GREATER DEPENDABILITY

<p>'80 SCIROCCO 4 spd. air. AM/FM CASSSETTE. Main dealer car. Like New! (BGG071)</p>	<p>'80 CHEVY CHEVETTE 4 spd. AM radio, air. Main dealer car. MUST SEE IT TO BELIEVE IT! (C14506)</p>
\$6588	'2995
<p>'81 SUBARU WAGON air. 5 spd. with auto. p.s. p.w. like New! (BGG474)</p>	<p>'74 PONTIAC FIREBIRD Original miles. 28,093. AM radio. Like New! SPORTY! 'EXCELLENCE' (ASPT11)</p>
'6988	'3199
<p>'77 TRANS AM 4 speed 4 spd. air. 110hp. CB radio. AM FM stereo cassette. Black. (JFS070)</p>	<p>'79 BUG CONVERTIBLE The last year made for this summer. White on white. Can't get the mileage. (4517) 4 spd. AM radio. GREAT INVESTMENT! (JMR29)</p>
\$5895	'6888
<p>'80 AMC SPIRIT GT Great look. 4 spd. 5 spd. air. radio. 2800. FM stereo cassette. Black. (BGG474)</p>	<p>'77 HONDA ACCORD 5 spd. AM/FM low low miles. Especially sharp car for the low cost! (J416011)</p>
'3988	'4795
<p>PEARL HARBOR VOLKS</p>	<p>'74 COROLLA 1 spd. AM radio. RUNS GREAT! (ASB168)</p>
677-0777	'1688
Farringdon Hwy.,	
Waipahu	tax & lic. not included

WAIPAHU AUTO CHEVROLET SALES & SERVICE	
671-2871	Division of Service Pacific Inc.
Prices good from 3/24/44	
'66 VALIANT 3/W Auto., 6. BRJ053	\$195
'75 IMPALA 2 DR. Auto., p/s. BNN219	\$795
'74 DUSTER Auto., p/s. ARP650	\$1595
'74 DATSUN B210 4 dr., auto. ATE790	\$1695
'78 TR-7 4 spd., BRG121	\$2595
'78 FAIRMONT 2 DR. Auto., 6. a/c, p/s. BNR012	\$3195
'78 GRANADA 4 DR. VB., a/c BPV722	\$3295
'80 CITATION 4 dr., p/s. 6 cyl. BCG702	\$3895
'79 VW RABBIT 4 dr., 4 spd. ANE757	\$3895
'78 DATSUN 280Z 4 spd. BCC081	\$4295
'78 NOVA CUSTOM 4 dr., auto., VB., p/s. a/c. BVA755	\$4295
'80 CHEVETTE 4 DR. 4 spd., air BEB335	\$4495
'81 FORD ESCORT 4 dr., Hitchbk., p/s. air BPU786	\$4995
'78 DODGE 4x4 1/4 TON P/U Auto., A1D061	\$4995
'80 FIAT BRAVA 4 dr., 6 spd., a/c. sunroof BFF431	\$5495

<p>PONTIAC</p> <hr/> <p>DAVE'S BEST S/WGN. BUY</p> <p>STK #2008A</p> <p>DAVE BARRETT</p> 	<p>PLYMOUTH</p> <hr/> <p>'68 PLYMOUTH \$150 247-4752</p> <p>73 PLYMOUTH Duster, Holly carb., headers, 318 V8, p/s, p/b, AM/FM cassette, no dents or rust, \$800. 235-3985.</p>	<p>SUBARU</p> <hr/> <p>DAVE'S BEST SUBARU BUY</p> <p>STK 21B3A</p> <p>DAVE BARRETT</p> 
<p>'79 SUBURD</p> <p>5 passenger S/w, automatic, Burgundy with maroon interior, low miles</p> <p>BAY'S LOW - \$2988</p> <p>RAY CHEVY-MAZDA</p> <p>Kaneche 235-3621</p>	<p>PORSCHE</p> <hr/> <p>79 914 PLYMOUTH Needs a little. Save a lot \$1995. Jim Stemons Imports 487-7974</p> <p>78 PORSCHE 924. TURBO CHARGED, bright orange. Only 20,000 miles. Factory metal, sunroof, air, 4 spd. BDB#943 \$\$\$ Jim Stemons Imports 487-7974</p> <p>'75 PORSCHE 914 Cam, AM, 5 sp., special paint & wheels, Peralti P-7 tires, one of a kind APD#08 \$\$\$ Jim Stemons Imports 487-7974</p>	<p>'77 DL Front Wheel Front wheel drive coupe, auto., red with black interior.</p> <p>BAY'S LOW - \$1885</p> <p>RAY CHEVY-MAZDA</p> <p>Kaneche 235-3621</p>
<p>PLYMOUTH</p> <hr/> <p>'67 PLYMOUTH in excl. running condition. Clean, with good tires \$450 or best offer. Call 235-3743, 247-2495, or</p>	<p>SUBARU</p> <hr/> <p>'81 SUBARU GL Hatchback, bluo, 5 spd, a/c. 833-7323</p>	<p>TOYOTA</p> <hr/> <p>'77 TOYOTA Corolla, stan- dard, needs a little. Save a lot \$1995, Jim Stemons Imports 487-7974</p> <p>'80 COROLLA, excl. cond, \$400 + take over payments. 235-5173 after 5 p.m.</p> <p>'80 TOYOTA Tercel, 2 dr., auto, new battery, radio. \$700. 941-9848.</p>

<h1>YOUR CHANCE TO STEAL A CAR!!!</h1>	
'76 MUSTANG 4-cyl., auto., p/s, air. SUPER CLEAN! (APT197) \$1995	'77 MERCURY MARQUIS Brghm. Fully Loaded: mags. split seat, AM/FM. Cruise control, ill. wheel, p/w. vinyl top, & MORE! Immaculate! (ABC722) \$1995
'74 AUDI 100 LS Super Nicel (BEJ467) \$1995	'76 CADILLAC DeVille. Loaded. A Classic in its own right. (VPA629) \$595
'77 HONDA CIVIC CVCC 3-dr., 4-cyl., 4 spd., new paint. Excellent Economy! (ASV50B) \$2795	'76 COUGAR a/t, p/s, p/b a/c. Includes A T 18 mo./18,000 Mile Warr. BEX373 Below whste. \$1995
'77 GLC 3-dr., H/B, automatic. (AEB995) \$2488	'76 DODGE ASPEN Station Wagon H/T, p/s p/b, luggage rack. Good Family Transportation. Includes A-T 18 mo./ 18,000 Mile Warr. BJG-411 \$1695
	'79 RAM CHARGER 4x4 Dodge auto., p/s, p/b, a/c. mags. wide tires. A BEAUTY! (KCN853) \$5595
<h1>WAIPAHU'S SHELLY MAZDA</h1> <p> <small>All units subject to prior sale!</small> 94-212 Leoku St., Waipahu </p>	

#1 VOLUME CHEVROLET CAR & TRUCK DEALER IN THE STATE Feb. '82

NEW CHEVROLET

\$4450

INCLUDES \$500 REBATE
SK #2131

PRICE
SLASHER
SPECIAL

\$1500

DISCOUNT

1982 MONTE CARLO SK#2694

PRICE
SLASHER
SPECIAL

\$1700

DISCOUNT

1982 4x4 BLAZER SK#2421

PRICE
SLASHER
SPECIAL

\$1700

DISCOUNT

1982 SPORTSVAN
SK#2970

80 MONTH
80,000 MILES
NEW CAR
WARRANTY
at extra cost

CAMARO Z28

MOTOR TREND MAGAZINE'S
"CAR OF THE YEAR"

"CAR OF THE YEAR"

★ All Prices Plus Tax & Lic. Fees.
Some Models Excluded From GM Rebate, Details Available.

BAY CHEVROLET

"Home of the Price Slasher"

In Beautiful Kaneohe

235-3621

**APRIL
SHOWER OF
SAVINGS**

'65 CHEVY IMPALA
BJV216, automatic **\$295**

'71 DODGE DEMON
BRX156, automatic **\$295**

'70 DART SWINGER
AXV088, automatic **\$395**

'73 BUICK APOLLO
BPB072, automatic **\$895**

'76 CHEVY NOVA
ABU944, automatic **\$995**

'75 RABBIT
BGN397, 4-spd., air. **\$1195**

'74 FIAT RALLY
BJB063, 4-dr. sedan,
1600 Special **\$1295**

'77 VOLARE WAGON
BRY661, automatic, air. **\$1595**

'76 PINTO
APD697, 4-spd., airipes. **\$1799**

'76 SUBARU
4-dr., automatic **\$1875**

**WINDWARD
VOLKSWAGEN**
KAILUA ROAD, KAILUA **262-6576**

TOYOTA 3 TOYOTA Corona wagon, 4 cyl., auto, air, \$2000 488-6675 ter 7 mp	VOLVO 71 VOLVO 144S, 4 dr. standard, \$1850 Ph. 623-4406	VOLKSWAGEN 75 VW BUG, radio, new paint, sky blue, \$2500/offer. Must sell 261-8344
8 TOYOTA Corolla \$4195 with warranty. National Car World 841-4231	73 VOLVO 1425 One of the best values available. Has some safety features as a new one! (BBP339) \$\$\$ Jim Siemons Imports 487-7974	73 PEOP BEETLE, very good condition, new paint, low mileage, \$2400 Ph. 261-1722
80 TERCEL \$3995 with warranty. National Car World 841-4261 80 CORONA Mark II, 2 dr., 4 cyl., paint, overhauled, tires 4400/offer. 944-5157.	73 VOLVO 1800 ES Have a sports car, a sedan, and a wagon all in the same car. Loaded w/ plenty of Volvo extras. Must see to appreciate (18J566) \$\$\$ Jim Siemons Imports 487-7974	72 VW BUG, good cond., \$1295 or \$1095 if we drive 1111 May 5 Call 487-9617



WHY PAY AN ARM & A LEG ELSEWHERE? ALL WE WANT IS YOUR EAR!!!

MAKE	LOWEST HAWAII PRICES	DON SHAW PRICE	SAVINGS
'82 CELICA SUPRA	\$17,142	\$13,870	\$3,272
'82 VOLVO 2440L	\$12,437	\$11,308	\$1,129

We can order any make, model, and color available in the United States.
Many accessories to choose from at factory prices.

So save yourself hundreds of dollars on the purchase of any new car or truck at ...

DON SHAW NEW CARS & TRUCKS INC.

905 Nimitz Hwy. **836-0141**

When You Ask the Right People You Get the Right Car. . . ASK US!!!



<p>'73 VW CONVERTIBLE 4 spd., AM/FM cassette. Hot item on the market! Call today! \$4395</p>	<p>'74 PINTO Radio, good transportation at a fair price. See for yourself! Only \$795</p>	<p>'74 BUICK CENTURY 2-dr. auto., good transportation (BRN029) \$995</p>
<p>'73 CAPRICE Mags, auto., radio. Just for the economy minded buyer. \$795</p>	<p>'80 MG 4-spd., AM/FM STEREO. Only 15,000 miles. Travel in style! \$6675</p>	<p>'71 COROLLA Automatic, radio, runs. Better Hurry! A Real Deal for someone! \$375</p>
<p>'74 260Z 4 spd., Mag wheels. Sporty. (FFS786) \$4195</p>	<p>'72 MG-BT 4-spd. SUPER CLEAN CLASSIC \$2895</p>	

**SPECIALIZING IN 100% FINANCING FOR
MILITARY UPON APPROVED CREDIT**
Don't Delay . . . All units subject to prior sale

DATSUN

OF WAHIAWA

1924 Wilikina Drive
Phone 621-0761



"1ST IN HAWAII"

5%

DOWN

ON NEW OR USED CARS

UP TO 60 MONTHS TO PAY

WITH **LOANPOWER[®]** FINANCING

TONY HONDA OF WAIPAHU IS THE FIRST DEALER TO BE AUTHORIZED BY CITY BANK TO OFFER THIS NEW PROGRAM TO THE PUBLIC. YOU DON'T HAVE TO EARN \$10,000 OR \$15,000 A YEAR TO QUALIFY, JUST HAVE GOOD CREDIT AND A REASONABLE DEBT TO INCOME RATIO. MILITARY PERSONNEL INCLUDED. OFFER SUBJECT TO CREDIT APPROVAL.

**PLEASE NO PHONE QUOTES
COME IN FOR YOUR SUPER DEAL!**

SUPER DEALER

**Tony Honda
of Waipahu**

authorized sales service parts
You don't really have a Honda 'til you have a Tony Honda Honda

LEX BRODIE'S TIRE SPECIALS

SAVE UP TO 35%*

Prices firm until April 30, 1982.
Please carefully read notes at base of this ad.

TOYO TIRE QUALITY*

IMPORTED STEEL RADIAL BLACKWALLS**

Tire Sizes	Also Available	No. in Package	Service Price	Full Service Price
155-12	600-12	3	\$4.25	\$4.25
155-13	520-13	3	\$4.75	41.75
155-13	610-13	3	\$5.25	45.25
165-13	710-13	3	\$6.00	48.00
175-13	810-13	3	\$6.50	50.50
175-14	C78-14	3	\$1.50	\$1.50
185-15	600-15	3	\$1.50	\$1.50

IMPORTED STEEL RADIAL WHITEWALLS

155-13	615-13	3	\$7.75	47.75
165-13	A78-13	3	\$6.75	50.75
175-13	B78-13	3	\$7.25	52.75
175-14	C78-14	3	\$1.50	\$4.50
185-14	E78-14	3	\$5.50	55.50
185-15	600-15	3	\$4.50	\$4.50

IMPORTED STEEL RADIAL WHITEWALLS P METRIC SERIES

195-75-14	C78-14	\$1.00	\$1.00
195-75-14	D78-14	\$3.00	63.00
195-75-14	F78-14	\$5.25	65.25
195-75-14	G78-14	\$5.50	65.50
195-75-15	H78-15	\$5.50	65.50
195-75-15	I78-15	\$7.75	72.75
195-75-15	J78-15	\$7.75	72.75
195-75-15	K78-15	\$7.75	72.75
195-75-15	L78-15	\$5.50	65.50
195-75-15	M78-15	\$5.50	65.50

IMPORTED STEEL RADIALS TOYO SERIES BLACKWALLS

175-70-13	155-13	46.25	56.25
185-70-13	A78-13	50.00	59.00
185-70-13	C78-14	50.25	59.25
195-70-14	D78-14	52.25	62.25

*Low Brodie quality designation.

MICHELIN XX-ZX PREMIUM STEEL RADIAL BLACKWALLS

135-10	520-10	30.25	50.25
145-12	600-12	48.50	58.50
155-12W	600-12	56.25	66.25
165-13	520-13	55.50	65.50
165-13	560-13	50.75	60.75
165-13	610-13	57.50	67.50
165-14	878-14	57.50	67.50
175-14	C78-14	62.25	72.25
185-14	E78-14	66.25	76.25
185-14	560-14	55.50	65.50
185-15	560-15	60.50	70.50
185-15	610-15	62.50	72.50
185-15	650-15	62.50	72.50

**Low Brodie quality designation of a superior tire.

MICHELIN X PREMIUM STEEL RADIALS ALPHA SERIES Whitewalls (Close-out)

B78-13	155-13	73.00	83.00
D78-14	175-14	74.50	84.50
D78-14	175-14	75.25	85.25
E78-14	185-14	78.75	88.75
H78-13	215-13	83.75	93.75
H78-15	205-15	85.75	95.75
H78-15	215-15	88.25	98.25

MICHELIN X PREMIUM STEEL RADIALS METRIC SERIES Whitewalls (Close-out)

185-14	E78-14	78.25	88.25
195-14	F78-14	81.25	91.25
215-14	H78-14	87.75	97.75
205-15	H78-15	77.50	87.50
205-15	H78-15	85.75	95.75
215-15	H78-15	88.25	98.25

MICHELIN XX-ZX PREMIUM STEEL RADIALS TOYO SERIES BLACKWALLS

175-70-13	155-13	64.00	74.00
185-70-13	A78-13	69.25	79.25
195-70-14	C78-14	73.25	83.25

MICHELIN XV5 HI-PERFORMANCE STEEL RADIALS TOYO SERIES BLACKWALLS

185-70-14	A78-13	91.75	101.75
195-70-14	B78-14	106.50	116.50
195-70-14	C78-14	105.75	115.75
175-14	C78-14	92.75	102.75
185-14	E78-14	98.50	108.50

MICHELIN TRX PREMIUM STEEL RADIALS METRIC SERIES

100 65HR 93 70 TL N 119.75 119.75
220 55HR 93 70 TL N 119.75 119.75

NATIONAL WHITEWALLS* 4 PLY POLYESTER

A78-13	155-13	24.75	31.75
B78-13	175-13	27.25	34.25
C78-14	175-14	32.50	37.50
D78-14	185-14	37.75	42.75
E78-14	195-14	42.75	47.75
F78-14	205-14	46.25	51.25
G78-15	215-15	50.75	55.75
H78-15	225-15	54.25	59.25
I78-15	235-15	58.75	63.75

*Other sizes also available.

**Note: Full service prices include tire mounting, balancing, weights, valve stems and tack-up service. Our no-service prices for