

HAWAII MARINE

Voluntary payment for delivery to MCAS housing/\$1 per four week period.

VOL. 10 NO. 16

KANEHOE BAY, HAWAII, NOV. 18, 1981

EIGHTEEN PAGES

Marines honor tradition

MARINE BARRACKS, PEARL HARBOR, Hawaii — With the sounding of the Adjutant's Call Marines from Marine Barracks and West Loch marched onto the

parade field here to begin the Sunset Parade and Uniform Pageant. Preceded by a 40-minute concert by the Fleet Marine Force Pacific Band, the Nov.

6 ceremony was in honor of the 206th anniversary of the Corps. During the uniform pageant leathernecks wore uniforms depicting each era of the Corps

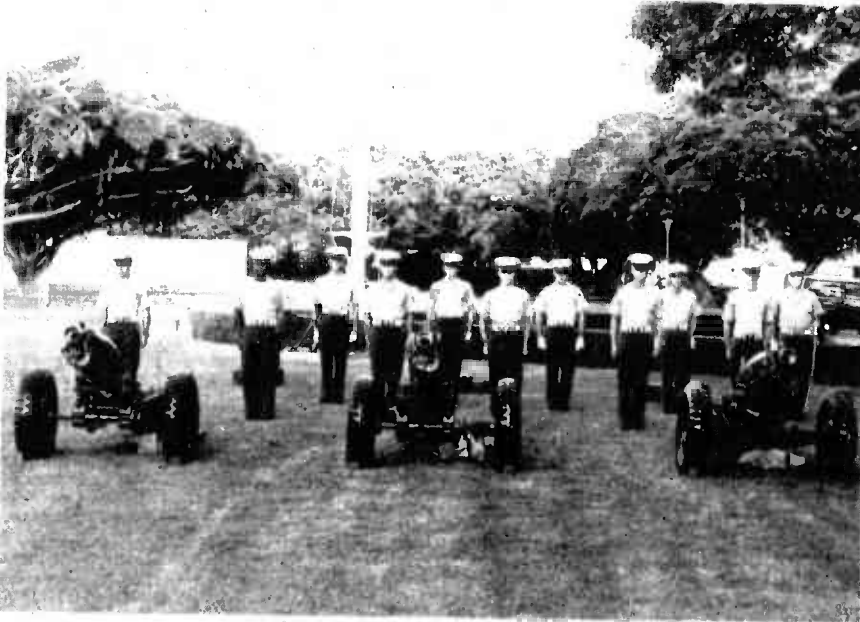
while respective history was read. Lieutenant General John K. Davis, Commanding General, Fleet Marine Force, Pacific, was the guest speaker for the oc-

casión. The event was witnessed by many honored guests including Marine Medal of Honor recipients who were in Honolulu for their biennial conven-

Once the General concluded his speech, the troops passed in review. Taps was played, ending the evening of tradition, but beginning a new year for Marines.

STANDING BY — Members of the Fleet Marine Force, Pacific saluting Battery stand by to participate in the Sunset Parade at Marine Barracks, Pearl Harbor.

Photo by Sgt. Nora Parrish



Safety Award

Chief of Naval Operations cites accident-free flights

Marine Fighter Attack Squadron-212, along with four other Fleet Marine Force, Pacific squadrons, is the recipient of the Chief of Naval Operations Safety Award for 1980. A total of 44 Navy and Marine Corps squadrons were selected this year for the prestigious safety award.

Brigadier General Bain McClintock, Commanding General, 1st Marine Brigade, presented the certificate and plaque to the squadron during a formation Nov. 2.

ACCORDING TO Captain Fred Allison, safety officer for VMFA-212, this is not the first time the squadron has earned the award. VMFA-212 also received the award in 1976, 1977 and 1979.

The award is based on a number of safety measures including accident free flying hours. As of the end of October, VMFA-212 had logged nearly 13,500 accident free flying hours. "They don't just look at flying time, but also the type of flying that is done,"

explained First Lieutenant Jim Bourne, Unit Information Officer. "For example, combat maneuver flying lately."

The award is also based on safety programs within the squadron, investigation procedures on accidents and a general safety awareness throughout the squadron. "It's an all-hands effort," said Capt. Allison, "and has a lot to do with the overall attitude within the squadron."

VMFA-212 HAS A number of safety programs including enlisted and officer safety counseling meetings and an assistant safety officer program. This program gives officers from other sections of the squadron a chance to spend two weeks going over safety procedures, studying surveys and making safety checklists.

The squadron also has a quarterly safety stand-down, the last one was held Nov. 2. "During the safety

stand-down, the day is devoted, entirely to safety," said Capt. Allison. The first half of the day is spent attending lectures and films and listening to guest speakers while the afternoon is spent with actual hands-on safety training.

"There's a lot of emphasis on safety training within the individual shops in the squadron. The troops also spend time training with the ground support equipment," explained Capt. Allison.

A NEW PROGRAM starting at VMFA-212 has the pilots and Radar Intercept Officers doing training.

"The pilots and RIOs trade each others seats in a simulation trainer," said Capt. Allison.

"This gives them the chance to learn what the other one does during a flight."

At VMFA-212, "safety is a continual thing," said the captain. "Hopefully we'll get the award again this year."

Accidental firearm discharges kill two

Order provides deadly force guide

HQMC, WASHINGTON — Recently, two Marines died and another was seriously wounded when military firearms were accidentally discharged.

Officials here are concerned that future incidents of this type do not occur, and have issued an ALMAR regarding it. ALMAR 213/81 references Marine Corps Order 5500.6D (Deadly Force Order) and provides specific guidelines on the proper handling of military firearms.

According to the ALMAR, these

incidents might have been prevented. Initial investigations reveal that each of these incidents resulted directly from disregard for the provisions of the order.

The portion of the order dealing with the arming of the M16A1 rifle and the .45-caliber pistol, merits special attention. Marines armed with military firearms should thoroughly familiarize themselves with the Deadly Force Order. Armed sentries should also be aware of the potential consequences of mishandling firearms.

"Carelessness and 'horseplay' are constant possibilities that will result in some instances of injury or death to Marines," states a law enforcement official here. "Many Marines are young and relatively inexperienced. They do not always realize the potential consequences of mishandling their weapon. Only vigorous command attention can minimize the instances of improper use of weapons."

Effective upon receipt of the ALMAR, commanders are to

ensure that all personnel armed with military firearms are instructed and understand the contents of the Deadly Force Order.

In addition, the contents of the paragraphs dealing with the arming of the .45-caliber pistol, M16A1 and other nonmagazine fed weapons are to be included in guard school briefings prior to posting any armed sentry, according to the ALMAR.

For more information, see Marine Corps Order 5500.6D.

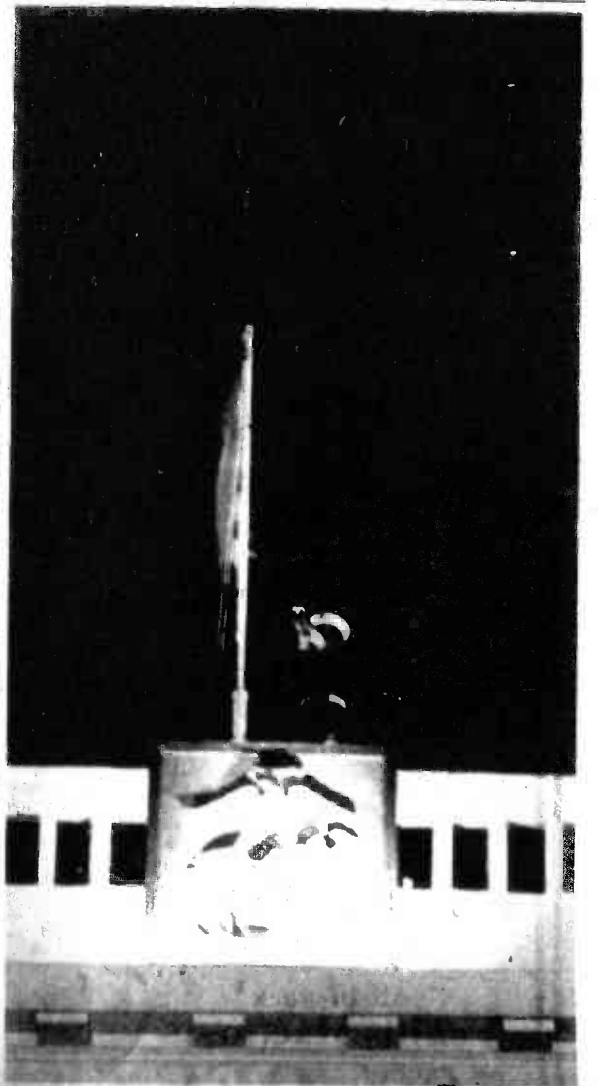


Photo by GySgt Robert Hoffman

DAY IS DONE — A lone bugler plays taps above Marine Barracks, Pearl Harbor concluding the Sunset Parade honoring the Marine Corps' 206th Birthday.

Fighter pilots gain combat tactics title

by Sgt Inez J. Stoner

Approximately once a year uncertified pilots and radar intercept officers from Marine Fighter Attack Squadron-212 attend an Air Combat Tactics program. Upon completion of the program the pilots and RIOs are certified Combat Tactics Instructors and are classified as mission commanders for air combat maneuvers.

It is a Marine Corps-wide program but is conducted from within the squadrons by instructors who have already received their certification.

The purpose of the program, according to First Lieutenant Jim Bourne, Unit Information Officer and a student in the program, "is to demonstrate situation awareness and the ability to instruct in an air combat maneuvering, high stress environment."

First Lieutenant William Guilfoyle, pilot, and 1stLt Jim Bourne, RIO; 1stLt Anthony Valentino, pilot, and Captain Terry Robling, RIO; 1stLt Mike Plumer, pilot, and 1stLt Ed Finn, RIO; and Major James Collins, pilot, and 1stLt Michael Atwell, RIO, participated in this year's Air Combat Tactics instruction.

The pilots and RIOs go through an intense month-long work-up that includes instruction in tactical proficiency, air combat maneuvers, aircraft, weapons and missile systems, and the operational design of the aircraft. They also compare American and Soviet aircraft and their capabilities.

present. The aircrews visually identified the bogeys and then performed air combat maneuvers with a total of four aircraft.

After each of the three sorties are flown, "the potential instructors are evaluated on their ability to effectively brief, lead and then debrief the sorties, for maximum training value and in a safe manner," explained Capt. John Graham, one of the instructors in the program.

THROUGHOUT the flying stage of the program, radar surveillance was provided by the Marine Air Weapons Tactics Control Squadron-2.

Upon completion of the program, the aircrews begin preparing for the Navy Fighter Weapons School, known as Top Gun, at the Naval Air Station, Miramar, Calif. "It's like this," said Capt. Graham, "the air crews have a bachelor's degree when they come here. The Air Combat Tactics instruction is like a Master's Degree and Top Gun is like a Ph.D."

There are plans for VMFA-212 to conduct another Marine Air Combat Tactics instruction program early next year. According to 1stLt Bourne, "We're going to try to get some more air crews certified in February."

UNTIL THEN, VMFA-212 has eight pilots and RIOs newly certified in air combat tactics.



Photo by SSgt Joe Blackburn

BANG... AND THEY'RE OFF — Colonel Charles Robinson, Commanding Officer, MCAS Kaneohe Bay, fires the starting gun as 511 runners begin the Air Station's 10K Birthday Run. The winners' circle for the Nov. 10 event was shared by Sergeant

Vernon Moseley, Brigade Service Support Group and Corporal Steven Vanguilder, 1st Battalion, 12th Marines, who crossed the finish line stride for stride in a time of 33:33.

Program expands Marines' knowledge and provides educational opportunities

HQMC WASHINGTON — The Marine Corps encourages its Marines to expand their knowledge of the world. There are various means used to achieve this goal. Experience is one and education is another.

The Defense Activity for Non-Traditional Education Support, better known by the acronym DANTES, helps Marines expand their knowledge and also provides them an opportunity to pursue a college degree regardless of their military assignment.

IT ALSO HELPS FILL a void

created when the U.S. Armed Forces Institute was disestablished in 1974.

The program serves two main purposes: to provide nationally recognized scholastic testing and certifying programs, and to increase the opportunity to take independent study courses and programs offered by civilian institutions.

Tests offered by DANTES are available to all active duty service members. Reserve Marines can join the program only when they have served on active duty for 120 or more successive days. Retired

members and dependents are ineligible for DANTES tests.

A major function of DANTES is the independent study program. The program is designed for service members stationed at isolated sites, working shift hours, transferred before completing programs to places where required courses are not offered and those who have advanced to a level in their program where courses they need are not locally available.

MANY COLLEGES AND universities have set limits on the amount of independent study they

will accept towards a degree. Marines interested in taking independent studies should check with the college of their choice to find out the school's policy for accepting independent study credits.

Marines applying for independent study courses are required to pay the cost of the course, or if eligible, can use in-service Veterans Administration benefits.

For more information, see your unit education officer or Marine Corps Order 1560.27A.

MAINLINER and TRAVEL HOLIDAY Award Winners

L'Auberge

French Cuisine

Superb Dining In A Charming Country French Manner

RESERVATIONS AFTER 2 P.M.

262-4835

117 HEKILI STREET, KAILUA

Your Hosts - Marcel & Elvi Baltzer

PRE-HOLIDAY sale

At

Sears

KANEOHE

FRIDAY and SATURDAY . . . November 20 and 21

Most Items At Reduced Prices

All In-stock Artificial Christmas Trees
20% OFF

Sears Regular Prices

Spruce up your home with an artificial Christmas tree. Flame-resistant needles. Easy-to-assemble.

All In-stock Tennis Racquets
50% OFF

Sears Regular Prices

Enjoy the game of tennis indoors or out with a new tennis racquet. Several models to choose from.

Selected Reconditioned Power Tools And Weedwackers
50% OFF

Sears Regular Prices

Save big on Sears power tools. All professionally reconditioned. Many models of power tools and weedwackers to select from.

Reconditioned Chain Saws
50% OFF

Sears Regular Prices

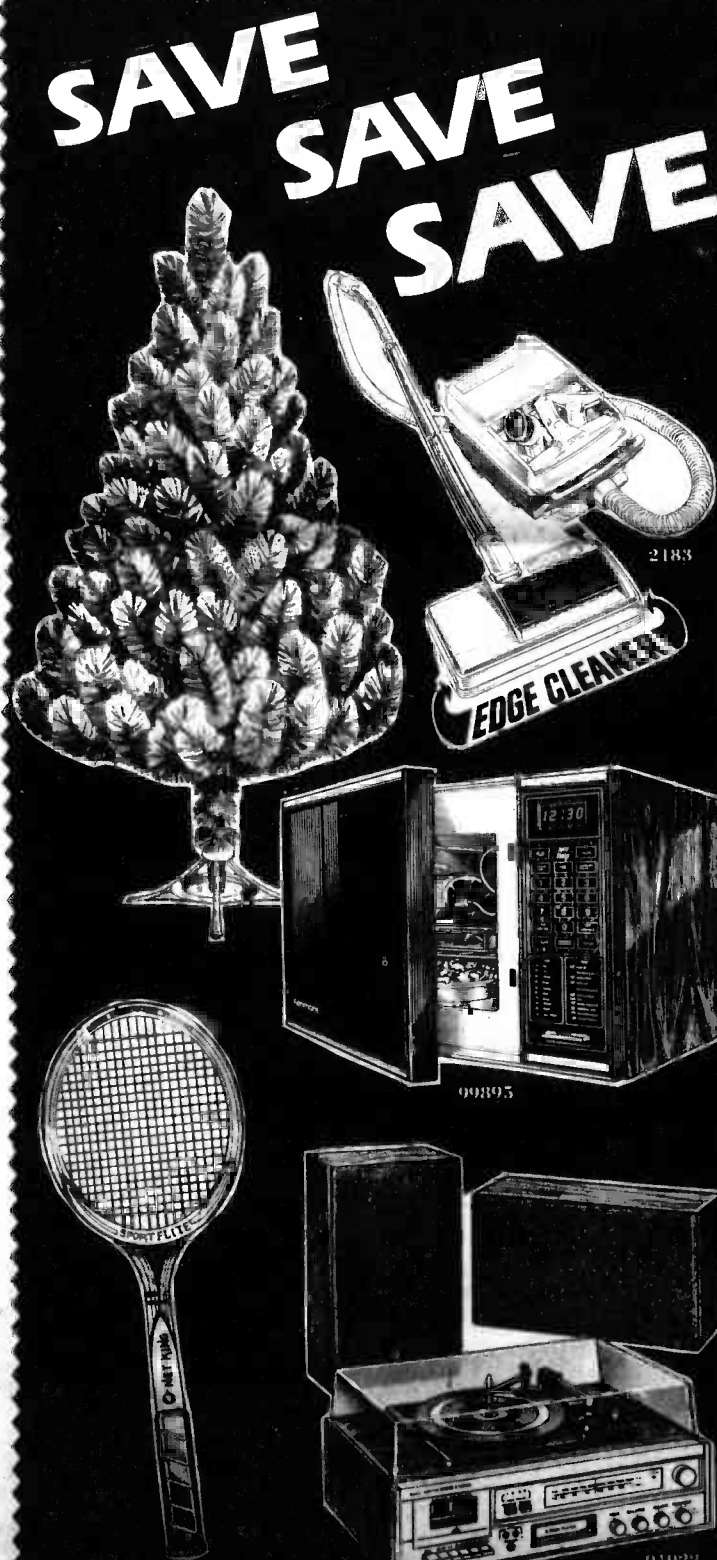
Get your chain saw at great reduction. Professionally reconditioned. Choose from several models.

Selected Light Fixtures
50% OFF

Sears Regular Prices

Light up your home with a new light fixture. From elegant to casual, take your pick.

Use your SearsCharge account



\$60 OFF
Powermate® Vacuum

Was \$229.95
Model 2183 **169⁹⁵** (6 Only)

Canister vacuum has powerful suction and a beater-bar-brush for thorough cleaning. Choose from 4 rug pile heights.

\$15 OFF
Upright Vacuum

Was \$59
Model 3140 **\$44** (6 Only)

Revolving beater-brush loosens deep down dirt which is swept away by powerful twin fan suction. Large 1 1/4-qt. bag capacity.

\$130 OFF
Microwave Oven

Was \$529.95
Model 99895 **399⁹⁵** (6 Only)

Memory feature lets you defrost, cook, hold-warm or any 3 functions. Whole meal cooking.

\$90 OFF
Compact Stereo

Was \$259.95
Model 91922 **169⁹⁵** (5 Only)

Play and record cassette tapes, play 8-track tapes. With AM/FM receiver, full-size record changer, two air-suspension speakers.

\$70 OFF
Compact Stereo

Was \$199.95
Model 91429 **129⁹⁵** (4 Only)

Listen to your choice of 8-track, AM, FM stereo or records. Has two speakers.

Each of These Advertised Major Appliances Is Readily Available For Sale As Advertised.

You can count on

Sears

SEARS, ROEBUCK AND CO.

Satisfaction Guaranteed or Your Money Back

WINDWARD CITY SHOPPING CENTER
PHONE 235-3677

STORE HOURS Monday, Tuesday, Thursday 9:30 A.M. to 6:30 P.M.
Wednesday, Friday 9:30 A.M. to 8 P.M.
Saturday 9 A.M. to 5 P.M.
Sunday 10 A.M. to 3 P.M.

Delivery Not Included In Selling Prices Of All Items In This Ad

HAWAII MARINE

The Hawaii Marine is an unofficial newspaper published every Wednesday by RFD Publications, Inc., 46-016 Alaloe St., Kaneohe, Hawaii 96744, in the interest of U.S. Marine Corps personnel in Hawaii. All news copy is prepared in the Joint Public Affairs Office, Marine Corps Air Station, Kaneohe Bay, Hawaii 96863, 257-2179.

Copy must be submitted no later than noon Thursday for the following Wednesday publication. Hawaii Marine solicits contributions of information and photographs from all Marine Corps organizations. However, it reserves the right to edit or rewrite material submitted. All advertising is arranged by the publisher, RFD Publications, Inc., telephone 235-5881. Circulation is 8,000.

Everything advertised in this publication must be made available for purchase, use or patronage without regard to race, creed, color, national origin, age or sex of the purchaser, user or patron. A confirmed violation or rejection of this policy of equal opportunities by an advertiser will result in the refusal to print advertising from that source.

Correctional facility now accepts women

CAMP S.D. BUTLER, Japan—To guarantee impartial administration of law, as well as save the military services thousands of dollars, the Joint Forces Correctional Facility here, administered by the U.S. Marine Corps, recently began accepting women inmates from military organizations throughout the Western Pacific.

According to Colonel Robert Monfort, Commanding Officer, Headquarters and Service Battalion here, the primary reason for opening a women's correctional facility on Okinawa is to insure a system of justice that is equitable for male and female service members.

FOR EXAMPLE, women Marines and sailors were treated differently from their male

counterparts by regulation, specifically Secretary of the Navy Instruction 1640-9, when it comes to confinement. Though the regulation states that men and women will be treated the same regarding apprehension, arrest, restriction and confinement, it expressly forbids imprisoning women in confinement facilities used only for male personnel.

Furthermore, women could not be awarded correctional custody as a punishment during "office hours," Article 15 of the Uniform Code of Military Justice. If officials felt very strongly that a woman service member should receive confinement as a result of court-martial, a request giving specific reasons for desiring such a disposition had to be sent to the Commandant for Marines and Secretary of the

Navy for sailors to designate a place of confinement.

IN THE STATES, permission to confine women Marines in civilian female institutions is normally granted by Headquarters, U.S. Marine Corps. However, there was no appropriate facility in the Western Pacific to confine women prisoners from Okinawa, necessitating either confinement in the nearest available continental U.S. institution or awarding women punishment less severe than their male counterparts who committed the same offense.

Captain Herbert Stafford, Commanding Officer of the Joint Forces Correctional Facility, noted that the cost of sending just one woman to San Diego involved air fare for the prisoner, round-trip air fare for two chasers, incidental costs and the cost of paying the prisoner's keep-in jail.

"AS YOU CAN IMAGINE, it's astronomical. Having a women's correctional facility here will save us literally thousands of dollars."

Though their cells are segregated from those of the male prisoners, women will work, eat, and attend counseling sessions, religious services and things of that nature with the men.

Under Col Monfort's direction, a few changes, mainly to afford some privacy for women prisoners, were made before the first woman was incarcerated.

THERE IS ONE THING women prisoners will have to do before entering the correctional facility that male prisoners won't. According to Col Monfort, women prisoners must take a pregnancy test before being confined, as such a condition would influence the type of duties they would be required to perform.

Thanksgiving . . .

the time to be thankful for the peace of our nation preserved and protected by the Armed Services. Share your Thanksgiving with a Marine. Call 257-2170 for information.

Super
Values
In
Sight!



- Large savings on high fashion frames and lenses, sunglasses and eyewear for men and women. (limited to current stock while supply lasts)
- One year guarantee on all glasses.
- One day service available on single vision.
- Dedicated to quality and service in vision care.

Dr. Charles Dean
Optometrist

KAILUA
139 Hekia St.
261-9735



At a glance

Great American Smokeout

The Great American Smokeout, a good-natured effort to encourage smokers to give up cigarettes for 24 hours, will be held Thursday.

The nationwide smokeout, now in its fifth year, is held to dramatize the concern of local health agencies for the critical link

between smoking and lung diseases.

The 1981 goal of the Great American Smokeout is to get at least one in every five smokers to give up cigarettes from midnight to midnight Thursday.

Watering hours

To regulate the rate of water consumption and to maintain

reservoir supplies for fire protection, the following water/irrigation guidelines are now in effect.

Family housing: 7:30 to 11:30 a.m., or 3:30 to 5:30 p.m. Thursday and/or Saturday.

Unaccompanied housing, industrial and administrative areas: 7:30 to 11:30, Monday and Friday.

Areas irrigated by treated sewage effluent (Golf Course, H-

3 entrance, Building 1633), are not restricted.

These guidelines supersede the temporary amendment to the lawn irrigation schedule.

Post office hours

The Unit One Post Office in the Exchange Complex will be closed from 8 a.m. until 1 p.m. Nov. 25, due to training commitments.

EAST COAST \$275 ROUND TRIP

West Coast \$183, Chicago \$230!
Christmas & New Years on the Mainland.
Call Kippe or Lisa
HAWAIIAN PATHFINDERS
487-0056

Christmas Special!

6 classes for only \$10

Begins Nov. 30, 1981
Locations Islandwide

PHONE 488-6773



The Exercise To Light

the law center
of michael perle

low rates

emphasis divorce

bankruptcy & adoption

955-4496

THE OFFICIAL 9th ANNUAL HONOLULU MARATHON PROGRAM

We're off to another exciting 9th Annual Honolulu Marathon! This year on December 13th, this annual event will encourage national and local runners to challenge this grueling 26 mile event beginning at the Aloha Tower and ending at Kapiolani Park. The SUN PRESS and the Honolulu Marathon Association will again publish the official program for our readers and Marathon participants, giving all businesses the opportunity to reach 108,000 Oahu suburban and military homes plus approximately 8,000 participants. Featuring world famous runners, exhilarating photography and unrivalled editorial coverage, plus a list of runners and their standings. This tabloid will surely be read and re-read. Reserve your space today!

Publication Date: December 2

Space Reservation: November 23

Camera Ready: November 25

PUBLISHED BY

Sun Press

Including Waipahu Sun News, Hawaii Navy News, Hawaii Falcon and Hawaii Marine

235-5881



FAMILY CHIROPRACTIC CENTER



Dr. Lawrence J. Connors, M.A., D.C.
CHIROPRACTIC... THE NATURAL SOLUTION
TO HEALTH PROBLEMS

- Headache
- Nervousness
- Neck Pain
- Shoulder-Arm Pain
- Bursitis
- Arthritis
- Backache
- "Pinched Nerves"
- Numbness in Hands or Feet

X-RAY FACILITIES
WORKER'S COMPENSATION
INSURANCE
HEALTH LECTURES
1ST & 3RD SAT. 9:30 A.M.

No Charge For Consultation

KANE OHE BUSINESS &
PROFESSIONAL CENTER
48-005 Kawa St., Suite 201
235-6677

WAREHOUSE SUPER SALE

We are clearing out Hawaii's most requested fans for the Holidays. Now is the time to buy.

5 DAYS ONLY

Offer Expires
Sun. 11/22/81 5 p.m.

OUR GUARANTEE

If you find your fan advertised at a lower price within 30 days of purchase we'll refund the difference in cash.

Professional
Fan Installation
at reasonable prices!

S.M.C.

Sug. Retail \$129⁹⁵

\$58

Features:
• 48" Blade
• 48" Motor
• 48" Blade
• 48" Motor

Sug. Retail \$299⁹⁵

\$168

CASABELLA

Sug. Retail \$405⁹⁵

\$238

Features:
• 48" Blade
• 48" Motor
• 48" Blade
• 48" Motor

PACIFIC SURPLUS & DISTRIBUTORS
CALL NOW 262-8131

1247 F. Pali Hwy. (1 block east of Castle Hospital)
in the new 7 Eleven Complex in Kailua
OPEN: Mon-Sat 10:00-6:00 Wed-Thurs 8:00 p.m.

Wake up to
BREAKFAST
AT BURGER KING® — KAILUA

START OFF YOUR DAY WITH A DELICIOUS BREAKFAST MADE ESPECIALLY FOR YOU!

BURGER KING

You can get your choice of delicious farm fresh egg sandwiches with ham or sausage. And if you want more, we've got three big breakfast platters: golden French Toast or scrambled eggs with sausage enough to handle any size appetite! Ask for your hot hash brown potatoes to go along with it, and there's plenty of hot coffee and cool, refreshing, fresh squeezed orange juice.

BREAKFAST AT BURGER KING® • Kailua • 6 Hoolai St.
OFFER GOOD MONDAY THRU FRIDAY
SERVED 6:30 AM 10:30 AM DAILY
CLIP THESE MONEY SAVING COUPONS FOR...
A GREAT WAY TO START YOUR DAY

1 1/2

HALF PRICE BREAKFAST
Good for one Breakfast Sandwich* at Half Price
*Must be used by 11:59 p.m. on the day of purchase. Not to be used with other coupons. Void where prohibited by law.

Breakfast Served Every Day
6:30-10:30 a.m.
COUPON GOOD ONLY AT
Kailua
6 Hoolai St.
*10 Ham & Egg w/cheese & Sausage & Egg w/cheese

OFFER VALID MON-FRI 12/2-12/5/81

1 1/2

BUY ONE
FRENCH TOAST PLATTER
WITH SAUSAGE
GET ONE FREE!

COUPON GOOD ONLY AT
Kailua
6 Hoolai St.

OFFER VALID MON-FRI 11/25-12/1/81

1 1/2

HALF PRICE BREAKFAST
COUPON
Good for one Breakfast Platter* at Half Price
*Must be used by 11:59 p.m. on the day of purchase. Not to be used with other coupons. Void where prohibited by law.

Breakfast Served Every Day
6:30-10:30 a.m.
COUPON GOOD ONLY AT
Kailua
6 Hoolai St.
*10 Ham & Egg w/cheese & Sausage & Egg w/cheese

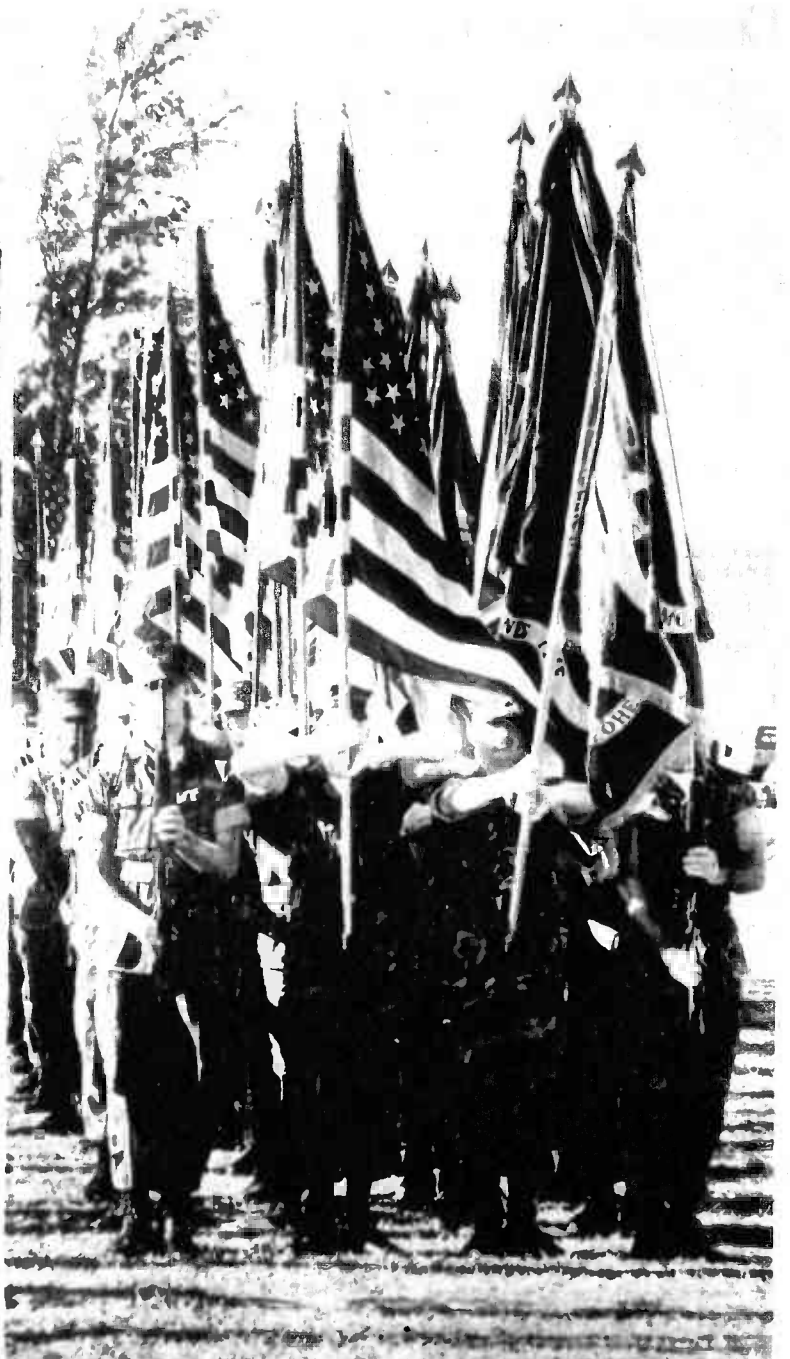
OFFER VALID MON-FRI 11/25-12/1/81



And they celebrated



Photos by SSgt Joe Blackburn.



Marines salute 206th birthday

by PFC Todd Ramsburg

It was some party! Now that our 206th birthday is but a snapshot in the Marine Corps album, it's time to reflect on some of the events which made our birthday what it was ... a day-long celebration.

The party started at dawn with the Marine Corps 10K Birthday

Run at Dewey Square. Sergeant Vernon Moseley and Corporal Steven Vanguilder took top honors in a field of more than 500 runners. The pair finished the race in a dead heat, with a time of 33:33.

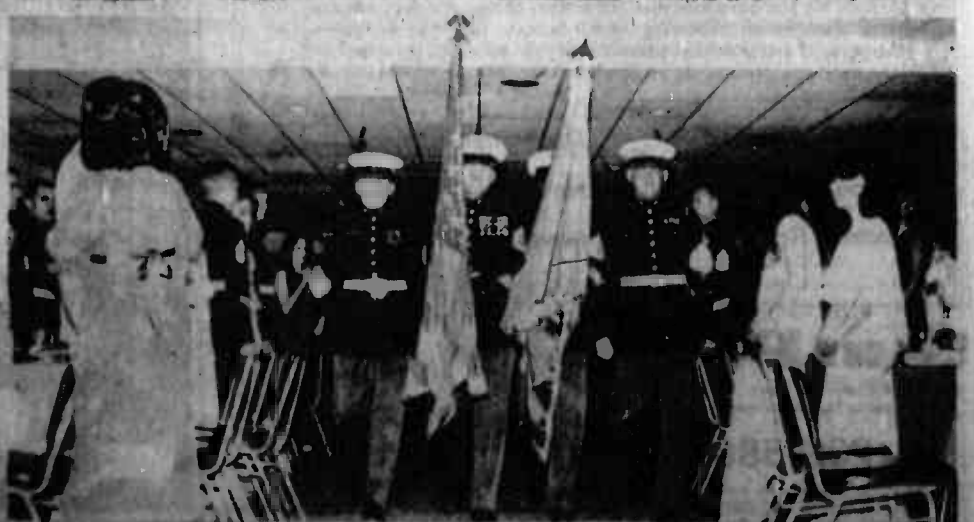
The 10K contestants barely had time for a shower before the

Birthday Pageant began at Pop Warner Field. The colorful event included a uniform parade, which vividly displayed the many changes our uniform has undergone throughout the years. During the traditional cake cutting ceremony, Brigadier General Bain McClintock, Commanding General, 1st Marine Brigade, accepted the first piece of cake.

Two Marine Master Sergeants were also retired at the pageant, concluding almost 50 years of combined service.

But of course, no leatherneck birthday would be complete without the Marine Corps Ball. The officers celebrated at the Hawaiian Hilton in Waikiki, while the enlisted Marines partied at the Air Station, Marine Barracks, and at Camp H.M. Smith.

The feelings shared by most Marines now is, "Bring on 207!"



Leathernecks leave valuables vulnerable

HQMC, WASHINGTON — Battling theft is a continuing problem for all Marines. According to Personnel Claims officials here the motel-style quarters seem to be particularly vulnerable.

It appears that Marines who live in the motel-style rooms may be lulled into a false sense of security. The following tips may help eliminate the theft of valuable property:

- High value property such as stereo component systems and portable televisions should be locked in a wall-locker whenever absent for more than a "long-weekend";
- If the key to a room has been lost or stolen, it should be reported immediately (Officials say more thefts appear to be caused by poor key control than by forcible entry);
- Whenever a room is left unattended, even for short periods of time, all valuables should be secured (a room may be entered during the day without the resident's knowledge);
- A "lock it up daily" rule should be adopted and items such as portable cassette players should be included on the list; and
- Maintenance defects should be reported and followed up until they are repaired. The time and effort taken to stow it safely is worth it.

AIKAHI AUTO PARTS

OPEN:
Mon. thru Fri.
9:30-7:00
Sat. 9:00-4:00
Sun. 9:00-1:00



Shock Value
at NAPA



Where your "Auto Showcase" publication is still FREE!

CALL NOW
254-3535

KAILUA AUTO PARTS

OPEN:
Mon. thru Fri.
8:00-5:30
Sat. 8:00-4:00
Sun. 8:00-1:00



\$10.00 Off
the price of a new NAPA original equipment muffler.

CALL NOW
262-8146

KDEO COUNTRY RADIO

Official Top 10 Songs

LAST WEEK	THIS WEEK	TITLE	ARTIST
2	1	My Baby Thinks He's A Train	Roseanne Cash
3	2	All My Rowdy Friends	Hank Williams Jr.
6	3	Wish You Were Here	Barbara Mandrell
8	4	Emily's Picture	John Conlee
5	5	Share Your Love With Me	Kenny Rogers
9	6	Get Your Heart On Me	Johnny Lee
10	7	My Favorite Memory	Merle Haggard
14	8	If I Needed You	Emmy Lou Harris and Don Williams
11	9	Heart On The Mend	Sylvia
13	10	It's All I Can Do	Anne Murray

Listen to BILLBOARD Magazine's Top 40 Country Songs
Saturdays and Sundays at 9 a.m. on

KDEO Country Radio AM 94

The Best of Country, from the Country, 24 hours a day.

Security department takes public for ride

by PFC Todd Ramsburg

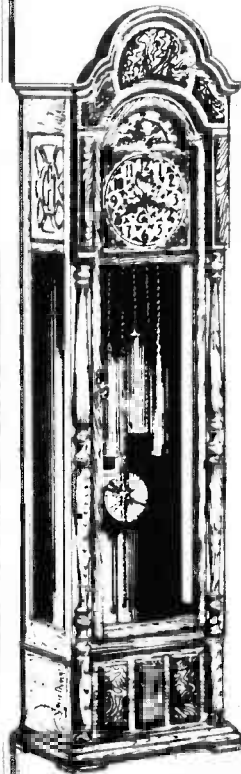
The Security Department aboard Marine Corps Air Station, Kaneohe Bay recently began a Ride-Along Program. This program, which has been quite successful in civilian law enforcement agencies, allows individuals the chance to experience the normal routine of a military policeman.

"The idea is to give people a first hand look at what we're up against," said Operations Chief, Master Sergeant Gwinn Henry. "The program is simple," he added, "it gives Marines from different units a chance to see what we're doing by actually riding with a patrolman."

MSgt Henry stressed that a Marine cannot take time off the job to participate in the program.

Anyone wishing to take part in the Ride Along Program must first notify the Desk Sergeant by calling 257-2125.

An Investment in Lasting Elegance



Beautiful hurl overlays embellish this magnificently styled, 79 1/2" high, solid ash cabinet with medium oak finish. Long spindle columns, crown pediment add to the Quincy's intrinsic charm. Harmonious 8 day Westminster movement can be seen through beveled glass door and side panels. Make an investment today... the Quincy is one investment you can bank on.

6007 The Quincy

SPECIALY PRICED

\$1325.00

from the
Hubbell
floor clock collection



A CLOCK HOUSE

PEARLRIDGE SHOPPING CENTER
PHASE I - 487-8825

28 OTHER MODELS TO CHOOSE FROM



Orson's
QUALITY SEAFOOD
Ward Warehouse

ENCHANTED TRAVEL, INC.

Joy Joaquin
Manager

Servicing all your travel needs at No Charge!

1051 Keolu Dr. in Kailua 261-7947
(Next to Dairy Queen)

OPEN M-F 9:00-5:00, SAT. 9:00-12:00

WESTINGHOUSE SOLAR PANELS

Warehouse Clearance
Opportunity for do-it-yourself & contractors.
(\$450 3 ft. x 8 ft.
selective coating)

Call 395-9509 836-1526



HOLIDAY SHOWS FRANKIE VALLI & THE FOUR SEASONS

Tuesday, Dec. 29, 1981

8:00 & 10:30pm \$20.00 per person

Thursday, Dec. 31, 1981

8:00pm \$20.00 per person

10:30pm NEW YEAR'S EVE SPECIAL
\$25.00 per person (includes party favors)

HAWAII BALLROOM
Sheraton-Waikiki Hotel

For preferred seating use mail order coupon below.
Send check or money order to:
FRANKIE VALLI & THE FOUR SEASONS SHOW
Sheraton Waikiki Hotel
Honolulu, Hawaii 96815

Please send me _____ tickets at \$ _____

Please check one:

Tuesday, Dec. 29: ☐ 8:00pm ☐ 10:30pm ☐ \$20.00

New Year's Eve: ☐ 8:00pm/\$20 ☐ 10:30pm/\$25

Name _____ Phone _____

Address _____

City _____ Zip _____

Please enclose self-addressed, stamped envelope.

PRODUCED BY FRANKIE VALLI & THE FOUR SEASONS.

Guess who leads the list of PEPPERS!

That's Right, Hawaii's Military!



Dr Pepper \$2.00 Holiday Special

Buy 24 - 12 oz. cans of Dr. Pepper and/or Sugar Free Dr. Pepper and get a \$2.00 refund by mail. Details available at most military retail outlets in Hawaii, and... save 50¢ per case with the coupon below.

Thank You... Army, Navy, Air Force, Marine Corps, and Coast Guard

Be a Pepper Drink Dr Pepper



Exam team assists disbursing offices

by Sgt Ernie Carter

MCDOSSET is coming! MCDOSSET is coming! This cry sometimes means burning the midnight oil to prepare and update records before the Marine Corps Disbursing On-Site Exam Team arrives.

The team is a tool to assist local pay clerks and disbursing offices, not to cause them extra work.

ACCORDING TO Marine Corps Order 7220.13D, the MCDOSSET is "to provide the Commandant of the Marine Corps with direct field representation by furnishing assistance, guidance and liaison, when required, in interpretation and application of disbursing

instructions; and to perform assigned phases of examination, and conduct annual reviews of disbursing offices within the Fleet Marine Force."

Major Richard Lovelace, Officer-in-Charge of MCDOSSET-West Coast, added, "While conducting the exam, we encourage clerks to sit down with the examiners to learn what we look for and how to correct discrepancies."

The major heads a team of 10 hand-picked Marines, consisting of three officers, six staff noncommissioned officers and one enlisted statistician. Each member is an expert disbursing

IN FACT, that is how the team members get chosen. Maj Lovelace related that information about the best disbursers "filters" in to the MCDOSSET OIC and he weighs that information with the Marines' service record book and then makes his choices. The members of the team have from 10 to 28 years of experience as disbursers.

Maj Lovelace said that when his team arrives at an installation, their examination involved two phases. First they screen personnel records at unit administration offices, and then pay records and procedures at disbursing offices. During the admin phase, the team looks

at operations and control procedures of the unit diary, pay, unit punishment books, promotions and leave. After carefully perusing the unit's records, the team makes appropriate recommendations to the admin personnel.

THE SECOND phase of the examination is quite similar to the first, but is conducted at the disbursing office and includes the general security of that facility.

The MCDOSSET visit

each installation annually to perform its mission. The team randomly examines records at each admin office and disbursing office.

The team's statistician works out the figures on a basis of numbers. For instance, his equations may read for a unit of 350 Marines the second, fifth, 18th, 19th, 47th record, etc. should be examined.

To get a good representation of the unit's records 10

percent or 30 records, whichever is greater, are examined.

After the MCDOSSET has completed their examination, they issue discrepancy notices to the units involved. The notices describe the errors and how to correct them.

A REPORT IS also made to the appropriate unit commanders and within 30 days, an official report is made to the Commandant of the Marine Corps. The report to CMC is coded to the

Fiscal Division Disbursing Branch.

Discrepancies noted by the team during its examination are usually corrected by the time the report is sent to CMC.

There are two MCDOSSETS maintaining the watch on the application of disbursing laws and rules. One team resides on the east coast and

the other on the west coast.

Because there are only two teams in the Corps, the members spend a great deal of their time on the road.

They go wherever a disbursing unit is located. The task encompasses the globe and may take the MCDOSSET aboard ship in an isolated port, or, as has been

the case, even to Mt. Fuji, Japan.

BECAUSE OF the hardships involved, a selectee has the option of turning down the three-year tour with MCDOSSET.


But, according to Maj Lovelace, most disbursers are glad to join the team and support the corps through their efforts.

STEFFY'S AUTO BODY & PAINT, INC.

Complete Paint & Body Reconditioning Foreign & Domestic Cars. Collision Insurance.
★ FREE LOANERS
Guy Cayetano —Owner— **261-8195**
U.S. Navy Retired Call Now **262-5060**
131 Hekill St. in Kailua (Next to NAPA)

Dr. Louann Miele Suppa FOOT SPECIALIST

• Sports Medicine
• Foot Surgery
• Foot Trauma
• General Footcare
• Diabetic Footcare
Consultation and Treatment By appt.
261-9931
TWO Convenient locations:
KANEOHE 46-005 Kawa St.
KAILUA 35 Kanehe St.

General Development Corp. Presents An Evening in Florida

Mr. Cliff Cowles, a noted speaker and real estate expert, will discuss current trends, financing, and prices in the State of Florida. A short color film will be shown. To reserve your place at one of the seminars call U.S. Properties at 946-2148.

Seminar Dates	Times
Sun., Nov. 22	6:30 p.m.
Mon., Nov. 23	6:30 p.m.
Wed., Nov. 25	6:30 p.m.
Fri., Nov. 27	6:30 p.m.

At the Airport Holiday Inn

BUY FACTORY DIRECT Special Overseas Military Program
SAVE 40%
FREE AMERICAN FURNITURE

Shop at home catalog
• Free USA Delivery—No Taxes
• No Storage or Interest Charges
• Money Back Guarantee
STATESIDE Buying Service
Box 2221 La Jolla, California 92038
NAME.....RANK.....
ADDRESS.....
APO/FPO.....TEL.....
BURLINGTON • HENREDON • KIMBALL • THOMASVILLE
CENTURY • MAGNAVOX • LANE & OTHERS
14,000 Satisfied Customers H-SP

Ingenius.

DIMENSION 3 MICROWAVE/ CONVECTION OVEN NE-9900

3 Different ways to cook quickly, naturally and evenly. PLUS Panasonic's Unique COOK-A-ROUND Magnetic Turntable.

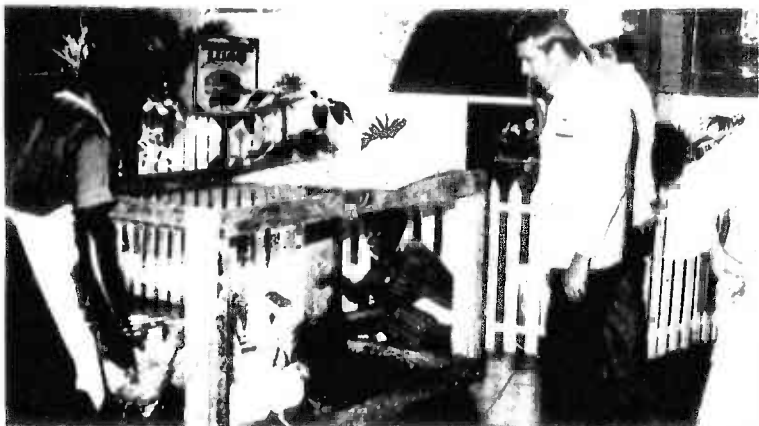
- The Convenience of MICROWAVE COOKING**
 - Defrost, thaw and cook foods in a flash.
 - Cook by Power and Time or by Temperature Probe
- The Tasty Appeal of CONVECTION COOKING**
 - For Browning and Baking
 - Meats come out tender and evenly browned
 - Breads, pastries, cakes and pies done by constant circulation of dry, heated air.
- The Unmatched Speed & Versatility of COMBINATION MICROWAVE/CONVECTION COOKING**
 - The best of both worlds... fast cooking with eye appeal for meats, roasts, pork, lamb or poultry.

Panasonic
just slightly ahead of our time.
Available At Your Military Exchange

THE PRIME FARE TO CALIFORNIA.
\$230
ONE-WAY TO LOS ANGELES, SAN FRANCISCO OR SAN DIEGO.
Fare is subject to change without notice.
When you need to hit the West Coast, take off on Western. Our low \$230 one-way fare gives you Los Angeles, San Francisco or San Diego. (Seats are limited. Fare Code: Y2.) Every flight features comfortable widebody jets and Islander Service, with choice of entrees, complimentary Champagne for adults, movies and stereo (at a small charge to Coach passengers).
WE'RE IN THE AIR AT PRIME TIME.
Western has scheduled its flights in the prime hours of the morning, afternoon, and evening. So our schedule can be your schedule. That's what Prime Time scheduling is all about.
Times are changing in the airline industry. At Western, we're changing for the better, putting you in the air with a prime low fare.

Western Airlines
USA/Canada/Mexico/Great Britain

YOUR TRAVEL AGENT KNOWS—JUST SAY YOU WANT TO FLY THE WESTERN WAY. Or call us at 946-7711; visit our convenient offices in the Royal Hawaiian Center in Waikiki, at 1046 Bishop St., in the Pearlridge Shopping Center, and at 1600 Kapiolani Blvd., 9th floor. For Air Cargo information only, call 836-1336.



THANKSGIVING DINNER? — It might look as though the Hale Koa Hotel's Executive Chef, Rolf Walter, is personally selecting the best goose to serve at

Thanksgiving Dinner, but actually he's helping set up the Hale Koa's Annual Thanksgiving Barnyard Display.

Hotel features holiday meals

The Hale Koa Hotel traditionally offers a wide selection of Thanksgiving dining experiences and this year is no exception. A bountiful Thanksgiving Buffet, special holiday menu selections in the Hale Koa Dining Room and a Hawaiian-style Luau are among the offerings this year.

The annual Banyan Tree Buffet will be served from 11 a.m. till 4 p.m., featuring a selection of roast turkey, baked ham, and all the trimmings.

The award-winning Hale Koa Dining Room will exclusively serve a special menu featuring such Thanksgiving favorites as young Vermont roast turkey and roast prime rib of

steer beef, au jus. The Dining Room will be open for dinner from 5 p.m. till 9 p.m.

A Hawaiian-style Thanksgiving Luau feast will be available on the beach, starting at 5:30 p.m., followed by a display of South Seas pageantry.

Reservations are now being accepted for both the Buffet and the Hale Koa Dining Room dinner. Call the Hale Koa Activities Desk at 955-0555.

The whole family will also enjoy the Hale Koa's traditional Thanksgiving Barnyard Display. Live barnyard animals and a fresh fruit and vegetable display will be on view in the hotel lobby from 9 a.m. till 6 p.m.

Study offered for viewing

HQMC, WASHINGTON — The Amphibious Warfare Presentation Department at Marine Corps Development and Education Centers, Quantico, Va., has developed a new study emphasizing the strategic and tactical mobility of amphibious forces.

The presentation, showing how such forces are used to satisfy our national maritime strategy, is unclassified and available for military and civilian and

audiences throughout the United States and abroad.

Narrated by a team of six officers, the study is presented in two parts. The first hour provides the rationale for the continuing need of Navy/Marine Corps amphibious forces and shows the utility of the Marine Air-Ground team. Additionally, it describes the organization, current capabilities and equipment of the Marine Air-Ground Task Force and

shows new developments in equipment and systems designed to improve our capabilities on the modern battlefield.

The second hour of the presentation describes a hypothetical future landing against a highly sophisticated enemy force (from planning through execution). It shows how new Navy and Marine Corps equipment under development will enhance our current capabilities, with

greater emphasis on operations ashore. This segment runs approximately 35 minutes, followed by a question and answer period. In addition, a one-hour, condensed presentation is available.

To schedule the presentation, contact the Amphibious Warfare Presentation Department at AUTO-VON 278-2486/2487 or (703) 640-2486/2487. Specific details on scheduling are in MCO 3340.6K.

Recruits may rate bonus

HQMC, WASHINGTON — People contemplating joining the Marine Corps for the first time may be \$5,000 richer when they initially join, thanks to the Enlistment Bonus Program.

According to ALMAR 206/81, individuals enlisting in specially designated military occupational specialties will receive a bonus of between \$2,500 and \$5,000.

The minimum length of service an individual can enlist for and receive the bonus money is four years and the maximum is six.

The full \$5,000 bonus is issued only to those enlisting for six years in the following occupational fields: signal

intelligence/ground electronics warfare; data/communications maintenance; electronic maintenance; avionics; aviation ordnance; air control/air support/anti-war warfare; and air traffic control and enlisted flight crews.

Besides a minimum term of enlistment, individuals must score at least 50 on the Armed Forces Qualification Test. The minimum acceptable score for other male individuals enlisting is 21. Women enlistees still need to score at least 50 on the AFQT.

A complete breakdown of all MOSs eligible for a bonus is listed in ALMAR 206/81.

The SUN PRESS and KCC support



If you know of, or see a crime call 955-8300 immediately. Crime Stoppers is a new system that keeps you anonymous and if your tip leads to an indictment or conviction you could earn up to \$1000.

CRIME STOPPERS



The Windward Side's Only Candy Store

Top off your great Thanksgiving dinner with a box of luscious Kailua Candy Co. chocolates and a cup of our own rich Kona blend.

Someone else cooking? Take a unique and delicious gift — a pound of blended Dutch Chocolate and Jamaican Almond coffee or a box of our Nutty Hawaiian Turtles.

Prep. XMAS Mail Orders 10% Off For Christmas Delivery

OPEN SUNDAY 11-3

located at 418C KUULEI ROAD • KAILUA PHONE: 262-2100

Next to McDonald's in the Municipal Parking Lot (Where Pizza Pete's used to be)

IS BUSINESS SLOW?

Advertising in the Sun Press can boost your business. We are the most cost efficient print medium serving Windward Oahu.

For more information feel free to call Chris at 235-6881.

50% OFF BERNINA 50% OFF VIKING

BERNINA 800	THANKSGIVING SPECIAL	VIKING 5710
Sug. Retail \$650 • Demo Model • Exclusive 25 Year Written Warranty • Makes Buttonholes	Demo Sale \$325 • Open Arm • Monograms • Self Adjusting Tension	Sug. Retail \$596 • Viking Electronic w/ Built-in Cams • Overlock • Blind Hem
Quantities Limited	Hurry Sale Ends Sun. 11/22/5 pm	Quantities Limited

PACIFIC SURPLUS 1247-F Pali Hwy. (1 block east of Castle Hospital in the new 7-11 Complex in Kailua)

CALL NOW 262-8131

GET OUT OF DEBT

through Chapter 13 A federal law which helps to pay off your debts without borrowing and in payments you can afford, stops creditor harassment and law suits, protects your job, co-signers and property. Information packet without obligation.

HOWARD Y. TANAKA
Attorney versed in Chapter 13 filings
Suite 703, Ali Bishop Bldg.
1136 Union Mall, Honolulu
Phone: 526-1544

Real Estate

By Eileen Hanohano REALTOR®

IMPROVEMENT CAN BE COSTLY

You can make a million mistakes trying to sell your own home. And one of them is making the wrong improvements. Many times, an expensive addition or repair can be the kind of thing that'll cost you far more than you get back.

True, the house should present a favorable appearance — mowed lawn, trimmed shrubs, and no obvious indications of neglect, but it's rare when a large financial undertaking will bring more than its cost in the final selling price.

There is always the financial risk of miscalculation too. Home repair costs frequently end up a lot higher than originally anticipated. You may end up with a faster sale and less inconvenience if you lower the selling price an equivalent amount.

Instead of guessing as to how much, if any, repair work, to undertake, see a Realtor. He can tell you what to do to make your home more salable. And what not to do so you won't lose money.

If there is anything we can do to help you in the field of real estate, please phone or drop in at the office of ERA HANOHANO REALTY, 785 Kam Hwy., #208, Pearl City. Phone: 486-6272 or 823-4041. We're here to help.

5 WEEK INTRODUCTORY COURSE FOR ORGAN

Easiest and Fastest Method Known

Designed Especially for Persons with No Musical Knowledge. Whatsoever from Ages 16 to 80.



Class Meets Weekly For 5 Consecutive Weeks on Tues., Fri., and Saturday. You need not own an organ. All music & materials are furnished.

REGISTER NOW! This Entire Program \$19.95 per person.

Call THAYER'S 536-8101

1020 Aiea St. FREE Parking

Jan Takushi
As your instructor, may I personally invite you to join us — it will be an experience to last a lifetime. (Private lessons also available.)

CONSOLIDATED THEATRES

KAM D.I. "SUPER" SWAP MEET EVERY WED. - THURS. - SAT. & SUN. 7:00 AM to 3:00 PM Opp. Pearlridge Cntr. • Ph. 847-1985 or 488-5822

WAIKIKI #1
Seaside nr. Kalaheo
923-2394
MERYL STREEP
"FRENCH
LIEUTENANTS
WOMAN" (R)
12:45 • 2:30
5:30 • 8:00 & 10:30 PM

WAIKIKI #2
STARTS FRIDAY
RICHARD BENJAMIN
PAULA PATTON
"SATURDAY
THE 13TH" (PG)
Call Theatre
For Show Times

WAIKIKI #3
Kalaheo nr. Seaside
923-5353
JAMIE LEE CURTIS
DONALD PLEASANCE
"HALLOWEEN II" (R)
12:30 • 2:30 • 4:30
6:30 • 8:30 & 10:30 PM

KUHIO #1
2095 Kuhio
941-4422
STARTS FRIDAY
ROBERT DUVALL
TREAT WILLIAMS
"THE PURSUIT
OF D.B. COOPER" (PG)

KUHIO #2
DUDLEY MOORE
"ARTHUR" (PG)
TONIGHT:
6:45 • 8:45 & 10:45 PM

KAPIOLANI
1446 Kapiolani
955-5115
STARTS FRIDAY
"AMIN
THE RISE AND FALL" (R)
Call Theatre
For Show Times

MAKIKI
ASIAN CINEMA #1
Baretania STARTS TONIGHT
ISLAND
OF HELL
944-9644
"OUTLAW KARATE
EXPERT PRIEST"
Subtitles
Call Theatre
For Show Times

ASIAN CINEMA #2
STARTS TONIGHT
SWORD OF
PART I and II
Subtitles
Call Theatre
For Show Times

UNIVERSITY • PUNAHU
UNIVERSITY
nr. Baretania
946-4144
GALILEO
TONIGHT:
8:30 • 9:30 & 10:30 PM
Subtitles

CINERAMA
King nr. Kalaheo
941-5291
STARTS FRIDAY
"FOOT SHOT" (R)
Call Theatre
For Show Times

WINDWARD
KAILUA D.I.
917 Pali Highway
261-6032
STARTS FRIDAY
"SAUNDERS"
TONIGHT:
8:45 • 10:00 PM
"SMOKEY BITES
THE DUST" (PG)
GATES OPEN AT 8:30 PM
SHOW STARTS AT 8:30 PM

AIKAKI
Aikahi Park Shopping Center
254-1330
STARTS FRIDAY
"SUPERMAN II" (PG)
"WONCO BILLY" (PG)
Call Theatre
For Show Times

EMERGENCY MEDICAL CARE 24 HOURS A DAY / 7 DAYS A WEEK INCLUDING ALL HOLIDAYS



Hawaii Emergency Physicians Associated, Inc.

Serving the Windward Oahu Community at



CASTLE MEMORIAL HOSPITAL

We accept CHAMPUS and all private, State and Federal Medical Insurance Plans.

Phone 261-0841

for Castle Hospital

Ask for your personal Emergency Medical Identification Card.

Hawaii Emergency Physicians Associated, Inc. • Established 1971

(clip this ad and place next to your phone where this number will be handy.)

Hairstyling for men and women
Manicures
Jettie Nails
Waxing and Make-up

Phil Ventura
Sharon Pearson
Verna Soga
Polly Orr
Debi Clay
Candy Maynes
Keala Uemoto
Lori Maddams
Kathleen Kennedy
Cara Carter

Susan Beers' Salon INC.

featuring REDKEN & NEXUS

Please call for a FREE consultation.

116-C Hehli St. Kailua 261-8571

Paradise Pastimes

WITHIN THE GATES—The Koolau Players will hold auditions for *M*A*S*H* Saturday and Sunday from 7 till 10 p.m. at the Boondocker Theater. Roles for men, women, and older teens are open for anyone who would like to audition. Production dates are scheduled for Feb. 12, 13, and Feb. 19 and 20. For more information, call Georgia Buehl at 254-4612 or Marilyn Boston at 254-2424.

BEYOND THE GATES—It's magic time as the splendor of Camelot starring Terence Knapp and Kristen McClelland comes to Honolulu Community Theater. The benefit performance of Camelot for the Hawaii

Association for Children and Adults with Learning Disabilities is scheduled for Dec. 5 at 8 p.m. Tickets are now on sale for \$10 each (\$6 is tax deductible). There will be a reception after the show to meet the cast, free pupus and a no-host bar. For tickets, call HACLD at 536-9684.

CHEAPSHOTS — Is there a special event coming up in December that could use a fantastic singing group for entertainment?

The University of California Men's Octet, an eight-voice acapella singing group are presently seeking opportunities for performances during their stay from Dec. 10 through 21.

The octet sings music from a multitude of

styles and eras, including old time gospel, classical music and barbershop.

The group will perform free of charge and look only for opportunities to entertain. Courtesy meals would be accepted for events held during meal hours such as, dinner parties, office parties, or club engagements.

To sign-up this group for a December engagement, contact Earl Greathouse, CINCPAC, 477-6282.

New dimensions in modern dance grace the Leeward Community College Theatre stage as the **Erick Hawkins Dance Company** performs Nov. 27 and 28 at 8 p.m.


Reservations are being accepted by calling 455-0385.

OFFICIAL HAWAII MUSIC REPORT • NOV. 14			
LAST WEEK	THIS WEEK	TITLE	ARTIST
1	1	Here I Am	Allys
2	2	Oh No	Commodores
3	3	Physical	Olivia Newton-John
4	4	Just Once	Quincy Jones/James Ingram
5	5	Why Do Fools Fall In Love	Diana Ross
6	6	Super Freak	Rick James
7	7	Let's Groove	Earth Wind & Fire
8	8	Take My Heart	Kool & The Gang
9	9	All I Have To Do Is Dream	A. Gibb/V. Principal
10	10	Start Me Up	Rolling Stones

The Official Hawaii Music Report is determined by weekly ballots you fill in, total record sales, caller requests and KIKI research.

Trivia

1. What is the only city in the United States named after a radio or television show?
 2. What is the most popular dog breed?
 3. Who was the last U.S. president born in a log cabin?
 4. Which state had the first cowboys?
 5. Who was the first black man to serve in the U.S. Senate?
 6. What's the windiest site in the U.S.?
 7. Who said, "I can get up at nine and be rested or I can get up at six and be president?"
 8. What was the title of W.C. Fields' first movie?
 9. Who is the only pitcher who has pitched three shutouts in a single World Series?
 10. Where do Chinese gooseberries come from?
 11. What were the real first names of the four Marx Brothers?
 12. In which one of his plays did Shakespeare make his only mention of America?
 13. What state has the greatest percentage of its state boundary in shoreline?
 14. What army is considered the world's oldest?
 15. What is the poorest country in the world?
 16. How much did the U.S. Government spend last year on veterans benefits?
- with 89 per person annual income of \$70
16. Rwanda with an origin to before 1400 in Vatican City traces 14. The Swiss Guard 13. Hawaii 12. The Comedy of Errors (Zeppo) (Groucho) and Herbert Adolph (Harpo), Julius (Chico), Leonard (Chico), 10. New Zealand Series son in the 1905 World 9. Chatty Matthew 8. Pool Sharks 7. Jimmy Carter 1934 Washington, N.H. in 6. 231 mph atop Mt. 5. Hiram Revels of 4. New York 3. James Garfield 2. Poodle 1. Truth or Consequences, New Mexico



RAMS

VS

SAN FRANCISCO

49'ers

10:35 A.M.

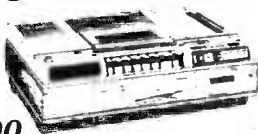
PLAY BY PLAY WITH
BOB STARR/DICK BASS
WITH **STEVE BAILEY**

KDEO

COUNTRY RADIO

PRESENTING THE GREATEST
VIDEO BUY IN HAWAII !!

Save **\$400** OFF the
suggested
list price
of the
Zenith 9000.



BUY NOW & RECEIVE **\$185** VALUE FREE

with the purchase of the Zenith 9000.

- ★ **\$125 FREE** Movie Rentals!
more than 1,000 movie titles to choose from!
- ★ **\$50 FREE** Video Club Membership
with discounts on film rentals, equipment and accessories!
- ★ **\$10 FREE** Video T-shirt!

Save a total of **\$585** on the
above package!

VIDEO CENTER

2810 Paa Street
Ph. 836-5050

418-G Kuulei Rd
Ph. 261-2022

The Video Specialty Stores

SEWING MACHINE HEADQUARTERS

Featuring:

BERNINA

For the wife or mom during Football season... There isn't a better time to buy than Now!

5 Days Only
Offer Expires Sun.
11/22/81 p.m.
Hurry! Limited Quantities



MODEL 800

• 25 yr. Exclusive Warranty
• Demo Model
• Buttonholes

NOW ONLY

\$325

Features

- Monograms
- Self-Adjusting Tension
- Open Arm

Sug. Retail

\$650

PACIFIC SURPLUS & DISTRIBUTORS
CALL NOW 262-8131 1247-F Pali Hwy.
OPEN Mon. Sat. 10 A.M. Wed. 11-8 p.m.
Sundays 11-5 p.m. 11 block east of Castle Hospital & the 7-11 complex

Why Pay More!!

\$3600 PER DAY

When leaving Honolulu, why not try our . . .

TLA Special

Complete Room & Car Package

Deluxe Room at the Pacific Marina Inn
Rental car from Trans-Lease Hawaii Rent-A-Car

Call Now For Reservations:
836-1131

PACIFIC *Marina* INN

ROOM ONLY
MILITARY RATE
\$24.00

HOTEL FEATURES:

- All rooms are air conditioned.
- Kitchenettes.
- Laundry Room.
- 24-Hour Courtesy Car Service to and from Honolulu Int'l Airport.
- T.L.A. Approved.
- Waikiki Beach just 20-minutes away and Pearl Harbor just 10-minutes from hotel.

2628 Waiwai Loop
Honolulu, Hawaii 96819

Storewide Savings Now Through November 21.

SAVE WITH CONFIDENCE! POWER STREAK 78

Strength and resilience of polyester cord... performance dependability of bias ply construction

Size & Type	SALE PRICE	Plus FET, no trade needed
D78-14 Whitewall	\$34.70	\$1.77
F78-15 Blackwall	\$36.85	\$2.20
F78-15 Whitewall	\$38.75	\$2.20

DT8-14 Blackwall Plus \$1.77 FET. No trade needed.

FREE Rand McNally Road Atlas
including \$98 worth of auto service discount coupons!
When You Buy Any Two Tires!
WHILE THEY LAST!

RADIAL SAVINGS FOR YOUR CAR

Size & Type	SALE PRICE	Plus FET, no trade needed
P155/80R13 Viva Radial Blackwall	\$38.95	\$1.43
P155/80R13 Viva Radial Whitewall	\$40.95	\$1.43
P195/75R14 Viva Radial Whitewall	\$49.95	\$2.11
P205/75R15 Viva Radial Whitewall	\$54.95	\$2.44
P225/75R15 Viva Radial Whitewall	\$62.95	\$2.68
P235/75R15 Viva Radial Whitewall	\$64.95	\$2.68

SAVINGS FOR YOUR TRUCK

Size & Type	SALE PRICE	Plus FET, no trade needed
700-15 Rib Hi-Miler Blackwall TT LRC	\$49.95	\$2.77
750-16 Rib Hi-Miler Blackwall TT LRD	\$68.95	\$3.53
G78-15 Tracker LT Blackwall TL LRC	\$57.00	\$3.11
800-16 S Tracker LT Blackwall TL LRD	\$68.95	\$3.38
G78-15 Tracker XG Blackwall TL LRD	\$68.75	\$3.23

TIEMPO RADIAL SALE!

P155/80R15 Blackwall Plus \$1.66 FET. No trade needed.

P165/75R13 Blackwall Plus \$1.61 FET. No trade needed.

P165/75R13 Whitewall Plus \$1.61 FET. No trade needed.

Rain Tire, Sun Tire... One Tire Does It All!

Just Say 'Charge It' With Approved Credit.

Goodyear Revolving Charge Account

Use any of these other ways to buy Our Own Customer Credit Plan:

- MasterCard • Visa • American Express
- Carte Blanche • Diners Club • Cash

AUTOMOTIVE STEREO BY KRACO

3 DAY SALE Your Choice

In/under-dash AM/FM radio & tape player—8-track or cassette: 1003-1004

Save \$3.95 a pair on speakers! 6" x 9" or 8" x 10" round coaxial speakers. Reg. Price \$32.95

Sale Ends Saturday

CUSTOM WHEELS WESTERN WIRE X/L

13 x 5" FMS SOME PINTO MUSTANG VEGA

The classic look of spokes. Lug's extra.

14 x 6" FMS some Ford Chevy Plymouth Dodge Toyota Cam

15 x 7" FMS some Ford Chevy Plymouth

Sale Ends Saturday

WINTERIZE TODAY AT EVERYDAY LOW PRICES

Lube and Oil Change

Includes up to 50% major brand motor oil. Oil filter extra if needed.

INCLUDES OUR 9-PT. MAINTENANCE CHECK

Wash & change oil, perform checks:

- Air and clutch
- Transmission fluid
- Power steering fluid
- Brake fluid
- Battery cables
- Air filter
- Belts and hoses
- Differential levels
- Tire pressure and condition

Includes major repairs and light trucks. Please call for an appointment.

12 Month Gas-Saving Tune-Up

Electronic analysis of starting, charging and engine systems. Plus:

- Install new rotor, new spark plugs
- 12-MONTH TUNE-UP SERVICE AGREEMENT

Get your car checked out by a trained technician and receive a FREE Engine Analysis. This analysis is good for one year from the date of the tune-up. ANY TIME within ONE YEAR of your tune-up take your vehicle and engine oil back to the shop that performed the tune-up and Gas-Saving will provide you with a FREE 12-month gas-saving guarantee.

Four cylinder cars reduced with electronic system: 8 CYLINDER CARS \$47 6 CYLINDER CARS \$49

Most U.S. Cars Imports & Light Trucks Cars with standard ignition add \$10.00 for required parts, condition and additional labor.

Got Cold Weather-Ready!

Auto Winterizing

- Prepare your cooling system
- Drain radiator and add with up to 2 gallons antifreeze/glycol
- Inspect belts and condition of fan belt
- Check oil levels, tighten as needed

KANEOHE BAY SHOPPING CENTER

Phone: 247-6668 Manager: Phillip G. Smith

Store Hours: 10:00 A.M. - 6:00 P.M.

SPORTS

Duece earns football title for 3 consecutive years

by LCpl Charlie Marshall

Faced with fourth down and the ball one foot in front of the goal line, Marine Fighter Attack Squadron-212 made a decision that determined the Air Station's flag football championship.

With seventeen minutes on the clock, they could either go for the touchdown, which would give them a five-point edge over the twice defending champions, Marine Air Control Squadron-2. Or, VMFA-212 could attempt a field goal and place the burden of keeping Corporal T.J. Rahmburg out of kicking range on the defense.

But, the fighter squadron elected to "go for broke."

THE BALL was snapped and quarterback First Lieutenant Ray Ponnath faded back into the pocket. He turned to his right as an open receiver streaked into the end zone. He let go with a bullet pass and out of nowhere Cpl John Moore stepped in front of the pass and knocked it to the ground.

MACS-2 stopped VMFA-212 on their own one foot line.

Not only were they halted for two downs on the goal line, but they were still on the losing end of a 10-8 score.

Earlier in the game 1stLt Ponnath connected with Sergeant Jim Free for the first score. They added two

points when the quarterback lobbed the ball over the defensive line and into the hands of Cpl Russ Wiederholt.

MACS-2's drive to tie the score came when a screen pass put the ball on the two yard line. After two incomplete passes Cpl Tim Bougher found Cpl Kelton Schohe over the middle for the TD. Cpl Rahmburg's kick was good and the score was 8-7.

During the closing seconds of the first

half, a roughing the passer penalty followed by an encroachment call moved the ball from the MACS-2 49 yard line to VMFA-212's 24. On the next play '212 was called for holding and the referees stepped off half the distance to the goal line. Cpl Bougher dropped back to throw a pass but was sacked with two seconds left.

Cpl Rahmburg returned to the field and booted a 35 yarder to end the first half 10-8.

AFTER '212's futile attempt to score from the one foot line, they were given a

second chance late in the second half. With the ball on the 35 yard line and second down with 15 yards to gain for a first, '212 fell apart. As 1stLt Ponnath's pass blocking collapsed, he desperately tried to throw, only to have the ball picked off by Lance Corporal James Balthis who returned it to VMFA-212's 28 yard line.

A routine pass play by Cpl Bougher to Cpl Schohe added another touchdown for MACS-2 and Cpl Rahmburg's kick ended the Station's "superbowl" 17-8, MACS-2.



A FREIGHT TRAIN ACOMIN' — Corporal Russ Wiederholt of Marine Fighter Attack Squadron-212, turns on the steam to round the corner and avoid a Marine Air Control Squadron-2 tackler. MACS-2 won the Nov. 10 football game and the Station flag football championship.

Photo by SSgt Joe Blackburn

BIB's
Family Restaurant

Invites You To A
Complete Thanksgiving Dinner Nov. 26

Delicious Turkey roasted to perfection, served with stuffing, whipped potatoes, vegetables, cranberry sauce, plenty of brown gravy, your choice of soup or salad and pumpkin pie.

Reg. \$6.25 Junior \$4.50 Keiki \$1.95
Serving from 3 p.m. till 8 p.m.

• BREAKFAST 7 to 11 a.m. (Sun. 7 a.m. to 1 p.m.)
• LUNCH 11 a.m. to 5 p.m.
• DINNER 5 p.m. to 9 p.m.

315 Uluniu St. Kailua Square
Reservations Preferred 261-8724

YOUR MICROWAVE OVEN HEADQUARTERS FOR THE HOLIDAYS

Individual Features Include

DIGITALS

PROBES

CAROUSELS

ROTOWAVES

NEW VALUES TO \$528

\$287

Limit 2 per customer

PANASONIC TAPPAN AMANA LITTON

OUR GUARANTEE: If you find your microwave advertised at a lower price within 30 days of purchase — we'll refund the difference — in cash!

Monday thru Saturday 10:00-6:00
Wednesday 10:00-8:00
Sundays 11-5

Pacific Surplus
Your Microwave Specialists
1247-F Pali Hwy. (1 block east of Castle Hospital in the 7-11 complex)

Act Now offer good for 5 DAYS ONLY till Sun. 11/22/81 pm

Financing Available

CALL NOW 262-8131

SAFeway

Where Everything's Right

Including The Price

Whole Fryers Patti Jean Frozen (Fresh Fryer Thighs Foster Farm) lb. \$1.39 LB. 65¢	3# Canned Hams Farmland Brand (5# Cans Safeway) ea. \$8.98 LB. \$6.59	Sliced Bacon Smok-A-Roma (Morrell's Pride) lb. \$2.19 LB. \$1.98	Vanilla Ice Cream Homestyle ½ Gallon \$2.73	Pumpkin Pie Mrs. Smith's Frozen 46 oz. \$2.69
Pork Butts Lean, Mainland Porkers Frozen (Ground Pork Fresh Daily) lb. \$1.59 LB. 98¢	Link Sausage Farmer John 8 oz. (Hormel Brown 'n Serve) 8 oz. ea. \$1.69 2/\$1.39	Crossrib Roasts Boneless Safeway Quality Beef (Crossrib Steaks) lb. \$3.29 LB. \$2.89	Gold Medal Flour 5 lb. \$1.09	Cranberry Sauce Ocean Spray 16 oz. 49¢
Porterhouse Steaks Safeway Quality Beef LB. \$4.29	Pork Chops Lean, Assorted Family Pack LB. \$1.89	Frozen Vegetables Bel-Air 32 oz. Corn, Mixed Vegetables, Peas, Peas & Carrots \$1.59	Cool Whip Birdseye 8 oz. 85¢	Stuffing Mix Mrs. Wright's 7.5 oz. 69¢
HEAD LETTUCE U.S. No. 1 Iceberg LB. 39¢ (Save 30¢)	DEL MONTE BANANAS U.S. No. 1 Golden Ripe LB. 49¢ (Save 30¢)	CELERY U.S. No. 1 LB. 35¢ (Save 34¢)	CRANBERRIES 12 oz. Pkg. U.S. No. 1 PKG. 89¢ (Save 50¢)	Cut Yams Princella 16 oz. 73¢

Prices and prices to this ad are effective Nov. 18-Nov. 21, 1981.
848 Ala. Ln., St. Louis
1171 S. Grand St., St. Louis
2885 S. Grand St., St. Louis
1300 Patti Hwy., St. Louis



SAFeway

Sportnotes

The University of Hawaii will put on an exhibition/scrimmage game and will host a clinic Thursday at 7 p.m. in Hangar 103. During half-time Coach Larry Little and his assistant coaches will answer questions and talk basketball with intramural and varsity coaches. At the conclusion of the game, he and his coaches will conduct a 30-minute clinic with all spectators.

The Kalaheo High School Swimming and Dive Team has begun workouts at the Air Station Pool for the upcoming season. Practices are held from 4 until 6 p.m. Monday through Friday. Coached by Fred Tester, the team is beginning its fifth year. More swimmers and an assistant coach are needed. Anyone interested may contact the coach at the pool, or by calling 262-7545.

The Athletics Office is looking for qualified

officials for the upcoming sports. Interested people are urged to contact the Athletics Office

Hangar 103's new hours are Monday through Friday 11 a.m. till 9:30 p.m., Saturday 11 a.m. till 9:30 p.m. and Sunday 1 till 9:30 p.m. The minigym will be temporarily closed on Sundays.

A free joggers clinic will be held in classroom 6 of the Joint Education Center tonight at 7 p.m. For more information call Gunnery Sergeant Herbert Baer at 257-2880, or Special Services at 257-3108.

The Women Marine Varsity Basketball Team is practicing Tuesdays and Wednesdays at 6 p.m. in Hangar 103. Interested people are urged to contact Coach Staff Sergeant Sam Davis at 254-3951 or 257-2045. The season starts Dec. 7.

Master Sergeant Al Hanly of Marine Air Control Squadron-2 teamed with retired Army Colonel Les Ihara have been seeded No. 2 in men's doubles for the 50 year old bracket of the Hawaii State Tennis Association.

The seeding resulted from computerized scoring of the duo's 1981 performances. MSgt Hanly and Col. Ihara's wins include the Hawaii State Regionals. Col. Ihara was not available for all United States Tennis Association tourneys held on Oahu this year due to military commitments. Even though the team defeated the top contenders in their last meeting, they placed second overall.

The Hawaii Armed Services Flag Football Championships will be conducted Nov. 23, 25 and 27 at Ward Field at Pearl Harbor. All games will start at 6:30 p.m. on Fields One and Two. The Hawaii Marines won the event last year.

\$12 **COUPON**
For First Plasma Donation
NEW Donors Only!

GET DOWN TO ALPHA

Alpha
PLASMA CENTERS

3129 KOAPAKA
BEHIND AIRPORT RAMADA INN
Ph. 836-0647

EARN AT LEAST \$17 EVERY WEEK
DONATING LIFE-GIVING PLASMA
IT'S AN EASY WAY TO HELP
OTHERS WHILE HELPING
YOURSELF

Our Hours Have Been Changed
Just For You!
M-F 10-6:00 p.m. Sat 8-2 p.m. Closed Sun

Chairman of the Board

D&D Headquarters of
Hawaii
featuring

TSR Basic Set

and accessories to
lead you into higher
levels of FUN
& FANTASY.

Pearlridge Phase I

(Upstairs) Near Liberty House & McDonald's

487-9445



From Sensible to Sensational

FINAL OFFER

Perm Special

includes
Conditioner
Shampoo
Cut
Perm
and
Blowdry

Only
\$35.00

with this ad

Offer good till
Nov. 25, 1981
Aikahi Shop Only



international haircutters

Koko Marina
Second Floor, Waterfront Village
395-7551

Aikahi Park Shopping Center
Kailua
254-1585

Monday-Saturday 9 am-9 pm
Sunday 10 am-4:30 pm

Monday & Saturday 9 am-5:30 pm
Tuesdays thru Fridays till 7:30 pm

See your Career Planner

You'll get straight talk. Answers to your questions. And a fair look at all the Corps has to offer.

HqCo, 1st Marine Brigade
GySgt Johnson R.E.
257-3670/3404

3/3
SSgt Szveda
257-2673

BSSG
SSgt Allen
257-3127

MACS-2
Sgt Denol
257-2995

VMFA-212
Sgt Hokans
257-2024

CommSptCo
SSgt Braxton
257-3143

FMFPac
GySgt Adams
477-6226

HqCo, 3d Marines
Sgt Piche W.E.
257-2758

1/12
Sgt Welsh
257-3225

MAG-24
GySgt Hansen
257-2285/2012

HMM-165
GySgt Malconien
257-2489

VMFA-232
Sgt Swan
257-2623

H&HS
SSgt Garcia
257-2841/3853

Marine Barracks Hawaii
SSgt Tubbs
474-3138

Stay Marine.

You can count on the Corps.

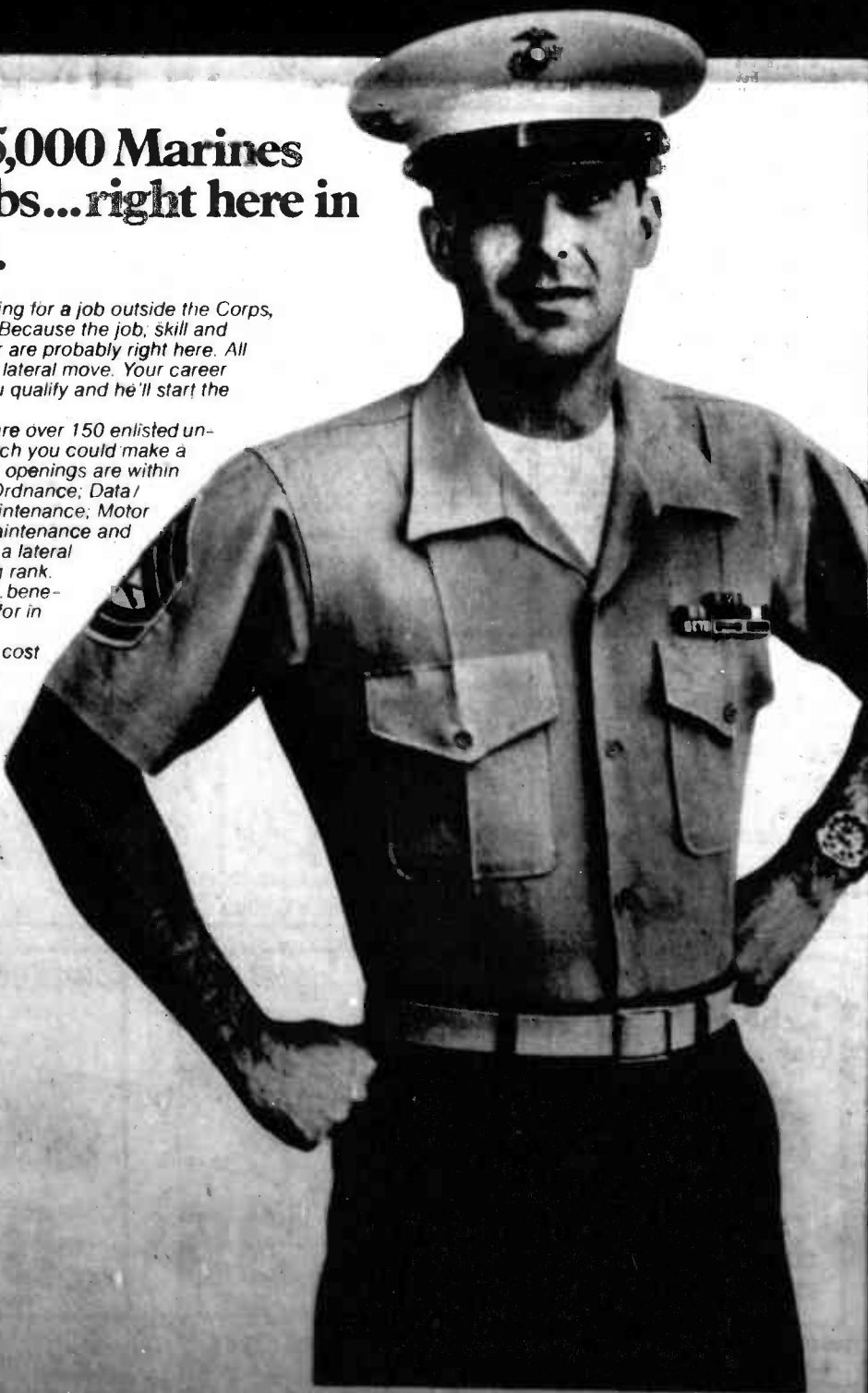
Last year 5,000 Marines got new jobs...right here in the Corps.

If you've considered looking for a job outside the Corps, see your career planner. Because the job, skill and training you're looking for are probably right here. All you have to do is make a lateral move. Your career planner can tell you if you qualify and he'll start the ball rolling.

If you qualify, there are over 150 enlisted undermanned skills into which you could make a lateral move. Many of the openings are within occupational fields like: Ordnance; Data/Communications and Maintenance; Motor Transport and Aircraft Maintenance and Avionics. And by making a lateral move you won't be losing rank. Nor your many benefits...benefits you may have to pay for in a civilian job.

You'll keep your low cost medical coverage which takes care of the whole family. You'll keep your educational benefits and retirement plan, which pays 50% of your base pay when you retire after 20 years...75% after 30. And you'll keep a job you're truly proud of. See your career planner. There're a lot of good reasons to...

Stay Marine.



Marines dump Fort Shafter 102-87

by LCpl Charlie Marshall

FORT SHAFTER, Hawaii — The varsity basketball game is like trying to find a parking spot on the main street in Waikiki. But, as fate would have it, the Hawaii Marines demolished the soldiers from Fort Shafter 102-87 Thursday night. As the game started, it appeared that the same ol' Marine team was playing, giving up the opening tip and then falling behind. But with their center, Corporal James Chandler back in the lineup, they started playing like a ball club and took the lead 13-11.

THE SOLDIERS started making mistakes and the Marines capitalized on them. Within four minutes, the leathernecks widened their lead.

Suddenly the game broke open. Cpl Chandler made a lay up. Cpl Walter Edmonds completed a three point play. Lance Corporal Leonard Vermeulen hit for two more points. Cpl Edmonds added two more. Sgt Norris Chapell followed suit with a bucket and the Marines took a substantial lead, 32-21.

To break the Marines' momentum Fort Shafter's coach called a time out. When play resumed the soldiers went to work whittling down the lead. They managed to come within four points but a hustling Marine team kept up the pace and the half time score was 53-40 Marines.

DURING THE first half, Sergeant Tommy Davis was the leading scorer for the Marine varsity team with 17 points. Specialist 4 Robert Bennet of Fort Shafter chalked up 11 for his team, but in doing so committed

four fouls. Two and one half minutes into the second half SP4 Bennet fouled out and the Marines had no worries. They were almost assured of their third win of the season. With the big man gone, the Marines went to work again. Fifteen minutes left in the game and the score

was 65-46, Marines. Then Fort Shafter stirred up a little bit of motivation themselves as they pressured the Marines into making mistakes. The Army closed the gap to within 13 points, but lost it when they fouled Private First Class Ricky Hicks. PFC Hicks missed both foul shots, however, Cpl Edmonds got the rebound, sank the shot

and was fouled again giving him another attempt at a three point play. The 6-foot 1-inch guard went to the line and completed his third foul shot of the evening. **WITH 10 MINUTES** left to play the Marines had a 20 point lead, 75-55. The clock moved slowly. All the Marines had to do was keep a cool head and finish

the game. At seven minutes left the score was 81-63. Edmonds yelled, "You haven't busted one hundred yet!"

Shafter 65. With two minutes left Cpl Edmonds yelled, "You haven't busted one hundred yet!"

That was all it took. Instantly the game came to life and the varsity team tried to make it over the

hundred-point mark. **BOTH TEAMS** scrambled up and down the court until

the final buzzer. As it sounded the Marines looked at the score board and read: visitors 102, home 87.

WE BUY

**GOLD • SILVER • PLATINUM
DIAMONDS • WATCHES
U.S. & FOREIGN COINS**

PRESTIGE

HONOLULU
746 KAPAHULU
735-2368

KANEHOE
46-216 KAHUHIPA
247-8477

OPEN 9-5 DAILY • SAT. 9-2

SCHEDULED AIRLINES TICKET OFFICE (SATO)

Staffed by full time Airline personnel
To assist in your travel requirements

- Individual leave
- Family travel to the Mainland
- Neighbor Island
- International
- Dependent travel to West-PAC
- Fares
- Flight Information

Contact SATO for reservations and airline tickets at any one of our three convenient on base locations.

Pearl Harbor	Bldg. 487 - Tele: 422-0571 Office hours - Mon. thru Fri. 0730-1600
Camp Smith	Bldg. 2D - Tele: 487-1567 Office hours - Mon. thru Fri. 0800-1600
Kaneohe MCAS	Bldg. 209 - Tele: 254-1564 Office hours - Mon. thru Fri. 0730-1530

**H&R
BLOCK**

Income Tax
Preparation
Phone

537-9945
or
487-8531

**Real Estate
School**

**\$195
plus books**

Salesman
Prelicensing
Classes Only

Classes start
Nov. 23 with State
Exam in February.

Class size minimum of 10.

**Fahrni
School
of Real
Estate Inc.**

Pearl City, Hawaii
Tel: 465-4522/4166

Kaneohe Travel Agency, Inc.
Phone 247-2113

Arrange Your Travel To

Depart 1-25 Dec., Return 5-20 Jan.

\$183.00 ROUND TRIP — UAL WESTERN CITIES
\$225.00 ROUND TRIP — UAL CENTRAL CITIES
\$267.00 ROUND TRIP — UAL EASTERN CITIES

PER PERSON WHEN TRAVELING IN A GROUP OF SIX
Mon. thru Sat. 9-5 p.m. Windward City Shopping Center

INVISIBLE BRACES

Ask about this amazing,
painless method of straight-
ening teeth through ortho-
pedics.

For Adults and Children

Kailua Professional Ctr. Suite 503 WINDWARD DENTAL GROUP INC.
Lee Hardy, D.D.S. 261-4694

WINDWARD FRAME SHACK

WITH THIS
COUPON

10% OFF

**DO-IT-YOURSELF
FRAMING &
CUSTOM FRAMING**

(Materials only)

109 Hekili St. 261-3141
KAILUA

WINDWARD FRAME SHACK

WITH THIS
COUPON

25% OFF

**ALL UNFRAMED
ART POSTERS
IN STOCK**

**20%
OFF**

ALL FRAMED
ART POSTERS
IN STOCK

109 Hekili St. 261-3141
KAILUA

On Jan.1, the military will finally become eligible for an IRA.

By law, your military pension plan has kept you from having an IRA account. But on January 1, a new law will let you have both: your pension plus a tax shelter on up to \$2,000 annually for retirement. Call your nearest branch or our Pension and Retirement Department at 546-2223. Honfed. It's a better way to bank.

Insured to
\$100,000

Honolulu Federal
Savings and Loan Association

Main Office: 188 Merchant Street / Honolulu / Branches everywhere

FSLIC

HONFED

Waterbedroom SALE!

FREE!

ONE NITE STAND

With the purchase of a
CORONA I WATERBED.
Now thru Nov. 30th.

THE TIMBERLINE WATERBED

Traditional
Styling for those
of us who want
the combination
of styling plus
comfort.

* COMPLETE LINE
OF ACCESSORIES

SAVE 20%

* NO LAYAWAYS ON CONTEMPO WATERBEDS

**On All Contempo
Waterbeds**
Prices Begin at \$216.00
Good thru Nov. 30th only.

Available now at Kaneohe Marine Corps Air Station

HOME IMPROVEMENT CENTER

Limited Quantities
On All Items

Advertisement not paid for by the Kaneohe Marine Corps Exchange.



Photo by Sgt. Ernie Carter

YOU'VE GOT TO KEEP IT STEADY — Henry Oda, senior barber at the main exchange barbershop, instructs leathernecks from Marine Amphibious Unit Service Support Group-37 in the art of cutting hair. Oda gave a crash course in barbering Nov. 6 to six MSSG-37 Marines.

They are: (from left) Lance Corporal Keith Billingsley, Corporal Darrel Caldwell, LCpl Warren Stanley, Cpl Carlos Ramos and in the chair LCpl Harold Finn. Not pictured was Sergeant Joe Itibus. The six Marines will be barbers for MSSG-37 on the upcoming deployment.

Salutes

EDITOR'S NOTE

Salutes is designed to recognize individuals for their achievements and exceptional performance of duty as well as to welcome new arrivals to Hawaii. The information herein is compiled from Fleet Home Town News releases submitted to the Joint Public Affairs Office by unit information officers.

BSSG

Promotion:
Sgt A.N. Palmer
Sgt E.L. Vest
Sgt E. Talley
Sgt R.D. Myland
Sgt A.M. Haney
Sgt M.R. Diprete
Sgt J.P. Johns
Sgt G. Brassel
Sgt W.T. Norton
Cpl M.J. Boyd Jr.
Cpl D.R. Coleman
LCpl P.A. Jarek
LCpl C.E. Lahti
LCpl R.W. Morreirn
PFC M.L. Anderson
PFC B. Cahill
PFC S.A. Kellison
Reenlistment:
Sgt E. Talley
Sgt E.L. Vest
Cpl L.G. Tumlin

SOMS

Welcome Aboard:
Sgt D.A. Frederes
Sgt L.D. Lipowski
Sgt J.H. McCartney
LCpl M. Neemia
LCpl J.A. Pardee
LCpl M.E. Peck
LCpl D. Pittman
Promotion:
Sgt J.R. Conway
Sgt P.W. Harper
Cpl N.I. Kraeszig
Cpl J.M. Montalvo
Cpl M.A. Rethwisch
Cpl S.L. Smith
Cpl M.R. Wright
LCpl T.A. Glaasper
LCpl K.J. Kosmala
Marine of the Month:
LCpl J.A. Endslo

1stRadBn

Welcome Aboard:
Sgt. B.N. Prazire
Cpl B.C. Asher
LCpl B.R. Jackson
LCpl S.K. Perreank
PFC R.M. Woods
Reenlistment:
Cpl C.M. Lockwood
Cpl J.H. Roberts
Sgt J.J. Alexander
Sgt C.R. Dillworth
Cpl M.G. Johnson
Cpl B.E. Stood

MABS-24

Welcome Aboard:
PFC G.D. Aurrend
PFC K.R. Felt
Promotion:
PFC G.K. Hagler

Meritorious Mast:

LCpl D.R. Reed
LCpl D.J. Reilly
Good Conduct:
SSgt R.D. Frost
Cpl D.L. Menlendez
LCpl D.A. Banks
LCpl E.A. Ferro Jr.
LCpl R.L. Johnson
NCO of the Month:
Cpl M. Rolland

MACS-2

Welcome Aboard:
LCpl S. Hanley
LCpl C.M. Zangerle
Promotion:
Capt B.J. Olivett
Cpl P.M. Griggs
Cpl C.E. Hessler
Cpl M.P. Petrucci
Cpl D.S. Tate
Cpl C.S. Veal
PFC W.P. Norris
Meritorious Mast:
Cpl W.V. Watkins
Good Conduct:
Cpl R.W. Conti
3000 Mile Club:
Sgt M.J. Webb

1/12

Welcome Aboard:
GySgt A. Duran
Sgt C.M. Robles
Sgt R.D. Stillman
LCpl C.A. Brown
LCpl S.B. Taylor
LCpl W. Kornegay
LCpl G.M. Rowan
LCpl G.W. Hedgecoth
LCpl D.B. Pleasant
LCpl W.D. Mauer
LCpl M.L. Packer
LCpl M.J. Notar
LCpl R.J. Gouge
PFC C. Washington
Jr.
PFC R.C. Cox
PFC W.R. Martin
PFC J.J. Hubert
PFC J. Rourke
PFC A.L. Hunt
PFC J.L. Sneed
PFC J.W. Franklin
PFC G.B. Shaw
Pvt D.J. Walton

Promotion:
LCpl R.W. Hartsell
LCpl K.T. Franks
LCpl R.A. Theilman
LCpl S.E. Negowski
LCpl A.F. Carba
LCpl V.R. Holt
LCpl J.A. Criger

H&HS

Promotion:
MSgt R.A. Johnson
MSgt B.R. Miller
MSgt S.D. Hollins
Sgt E.Z. Delacruz
Cpl M.S. Allen
Cpl K.W. Briley
Cpl S.E. Campbell
Cpl D.L. Charity
Cpl P.L. Deters
Cpl A. Gutierrez
Cpl J.R. Hartsell
Cpl K.E. Haselkamp
Cpl P.D. Hospodar
Cpl B.K. Johnson
Cpl M.C. Leblanc

Meritorious Mast:

Sgt E.E. Delecruz
Cpl L.D. Crotley
NCO/Marine of the Month:
Cpl J.E. Sword Jr.
LCpl J.R. Haragos
Certification of Commendation:
Sgt S. Mastalo
LCpl P.F. Silva
LCpl K.M. Wall

Realism enhances new memorial film

HONOLULU — Superintendent Gary Cummins of the USS Arizona Memorial announced that the National Park Service is now showing an improved version of the film that is now a part of the Memorial's program. Cummins stated that the new film, like the current one, was produced by the U.S. Navy. However, the new film is a wide-screen production that also uses a Dolby "surround" sound system. In addition, the new film contains more actual World War II film. "The Navy made a real effort to locate historic footage depicting Japanese aircraft of the type involved in the 1941 attack on Pearl Harbor, and to eliminate scenes in the old film which utilized U.S. aircraft with Japanese markings," Cummins emphasized. The 20-minute film is shown in two modern, air-conditioned theaters in the USS Arizona Memorial Visitor Center as part of the Memorial's interpretive program. The program schedule

calls for daily programs except on Mondays, beginning at 8:15 a.m. and approximately every 20 minutes, with the last program at 3 p.m. Immediately after each film showing, the U.S. Navy transports visitors by launch to the USS Arizona Memorial. All visitors must obtain tickets for these programs, which are available, free of charge, only at the information desk at the USS Arizona Memorial visitor Center. Cummins reminded visitors that while the film is open to all visitors, Navy regulations prohibit children under age 6 from riding the Memorial launches.



TLA SPECIAL "ROOM & CAR PACKAGE"

Includes:

- RENTAL CAR by Trans-lease Hawaii Rent-A-Car
- DELUXE, Spacious Rooms with:
Air Conditioning
FREE Color Television
Room Service Available
- FREE Parking, Baby-sitter Referral
- Hotel Laundromat
- Swimming Pool
- FREE 24-Hour Airport Shuttle Service
- Kennels
- CREDIT CARDS: American Express, VISA, Bank Americard, Carte Blanche, Diner's Club & MasterCard.
- Location on main bus line, convenient to all military installations, WAIKIKI, MAJOR ISLAND ATTRACTIONS AND AIRPORT.

ROOM ONLY

\$3800

Plus Tax per night

For Reservations & Information Call:

836-0661

Holiday Inn AIRPORT

Additional Conveniences:
Lei Maker's Garden Restaurant
Kalama Lounge
(with nightly entertainment)

TLA Approved
Room & Car \$51⁹⁵ Per Day



WE'VE BEEN FLYING FROM HONOLULU TO DALLAS-FORT WORTH AND BEYOND FOR TWELVE YEARS.

Fly Braniff's 747 nonstops to Dallas-Fort Worth any day of the week. From there, you can connect to Braniff cities in Britain, South America, Canada, Mexico and throughout the U.S.A. Without ever changing airlines or terminals.

U.S.A.

Amarillo
Austin
Chicago
Corpus Christi
Dallas-Fort Worth
Des Moines
Fort Lauderdale
Hartlingen
Houston
Kansas City
Lubbock
Memphis
Miami

Midland-Odessa
Minneapolis-St. Paul
Nashville
New Orleans
New York-Newark
Oklahoma City
Omaha
Orlando
Philadelphia
San Antonio
Tampa-St. Petersburg
Tulsa
Washington, D.C.-Baltimore
Wichita

CANADA

Montreal
Toronto

BRITAIN

London

SOUTH AMERICA

Asuncion
Bogota
Buenos Aires
Cali
Caracas

Guayaquil

La Paz
Lima
Maracaibo
Panama City
Quito
Rio de Janeiro
Santiago
Sao Paulo

MEXICO

Acapulco
Mexico

FREE SPINAL ANALYSIS AND CONSULTATION



- Danger Signs of Pinched Nerves:**
1. Frequent Headaches
 2. Low Back or Hip Pain
 3. Dizziness or Loss of Sleep
 4. Numbness in Hands or Feet
 5. Nervousness
 6. Neck Pain or Stiffness
 7. Arm and Shoulder Pain

FREE ANALYSIS DOES NOT INCLUDE X-RAYS OR TREATMENT

Pacific Chiropractic

685 KANOA RD. #207
261-0831



DR. WILLIAM L. LIPPMAN
M.D., D.C.

For reservations, call your travel agent, corporate travel office or Braniff in Hawaii toll-free at (800) 527-5090.

BRANIFF

• 60 HELP WANTED
MALE & FEMALE

PRE-SCHOOL teacher, part time, mornings, education and experience required. Call Hawaii Child Center, Ewa Beach, Call 689-0072.

LOST Your Tri-Chem liquid Embroidery instructions? Velvut and brush clothes. Full/part time job opportunities. 833-6800, 582-4607, 422-8255, 247-1997, 462-3652, 833-1396.

DRIVERS WANTED
HONOLULU RESIDENT (1)
LEAWARD RESIDENT (2)
CENTRAL RESIDENT (1)
Delivery and check-up of local sports magazine, work every 5 days, 2 hours at a time, 10 days total \$100 for the term. Must have car. Referrals welcome. Call Chip at 732-7655 evenings best time.

ISLAND Employment
Preschool teacher \$77.40/ month.
Clerk Typist \$725/month.
Cashiers \$350/hr.
Manager Trainee \$450/hr.
Secretaries D.O.E.
Cooler D.O.E.
Cocktail Servers \$5
Stereo installer \$30/hr.
Melina 21-9782.

MODELS Needed to model for good agency. Mainly for TV commercials or fashion modeling. Children welcome! Morgan Talent, Ent. 944-2035.

KOKUA Employment Service
767 Kailua Rd. Rm 207
Kailua, Hawaii

OPPORTUNITY for ambitious people. Print & TV International. GK-P.O. Box 88209, Honolulu, HI 96815.

• 62 DOMESTIC HELP
WANTED

PART Time Kameohe, yard/house work, after school, call in a.m. 247-6118.

BABY sitter wanted for 1 child over Kailua vacation. Call 472-8363 before 3 p.m. or 422-8177 after 3 p.m.

BABY sitter wanted for 1 child over Kailua vacation. Call 472-8363 before 3 p.m. or 422-8177 after 3 p.m.

• 63 SITUATIONS WANTED

ATTENTION MILITARY
MOTHERS! In need of a sister? For more information call 836-4616.

NURSE companion for elderly, day live out. Call 422-4864.

GET ready for the Holidays! Experienced house cleaner available. 247-6916.

• 64 GARAGE & LANAI SALE

POTTERY FAIR
Exhibition & Sale of pottery & ceramic sculpture by THE WINDWARD POTTERS at Lanikai Community Center on Aiea Drive. November 21 from 9 a.m. to 3 p.m. Refreshments for Xmas Shoppers.

• 65 MOVING SALE

MOVING Everything must go, 11/21 & 22, microwave, organ, furniture, sewing machine, mooded, 47-6924 Hui Kulu St. Kaneohe 239-6432.

CLOSE OUT — Wrangler kids samples an even greater price reduction. Sat., Nov. 21, 9-5 p.m., Sun., Nov. 22, 9-3 p.m., 830 Waiwae Rd., Kailua.

• 66 GARAGE & LANAI SALE

MOVING Everything must go, 11/21 & 22, microwave, organ, furniture, sewing machine, mooded, 47-6924 Hui Kulu St. Kaneohe 239-6432.

CLOSE OUT — Wrangler kids samples an even greater price reduction. Sat., Nov. 21, 9-5 p.m., Sun., Nov. 22, 9-3 p.m., 830 Waiwae Rd., Kailua.

• 67 GARAGE & LANAI SALE

MOVING Everything must go, 11/21 & 22, microwave, organ, furniture, sewing machine, mooded, 47-6924 Hui Kulu St. Kaneohe 239-6432.

CLOSE OUT — Wrangler kids samples an even greater price reduction. Sat., Nov. 21, 9-5 p.m., Sun., Nov. 22, 9-3 p.m., 830 Waiwae Rd., Kailua.

• 68 GARAGE & LANAI SALE

MOVING Everything must go, 11/21 & 22, microwave, organ, furniture, sewing machine, mooded, 47-6924 Hui Kulu St. Kaneohe 239-6432.

CLOSE OUT — Wrangler kids samples an even greater price reduction. Sat., Nov. 21, 9-5 p.m., Sun., Nov. 22, 9-3 p.m., 830 Waiwae Rd., Kailua.

• 69 GARAGE & LANAI SALE

MOVING Everything must go, 11/21 & 22, microwave, organ, furniture, sewing machine, mooded, 47-6924 Hui Kulu St. Kaneohe 239-6432.

CLOSE OUT — Wrangler kids samples an even greater price reduction. Sat., Nov. 21, 9-5 p.m., Sun., Nov. 22, 9-3 p.m., 830 Waiwae Rd., Kailua.

• 70 GARAGE & LANAI SALE

MOVING Everything must go, 11/21 & 22, microwave, organ, furniture, sewing machine, mooded, 47-6924 Hui Kulu St. Kaneohe 239-6432.

CLOSE OUT — Wrangler kids samples an even greater price reduction. Sat., Nov. 21, 9-5 p.m., Sun., Nov. 22, 9-3 p.m., 830 Waiwae Rd., Kailua.

• 71 GARAGE & LANAI SALE

MOVING Everything must go, 11/21 & 22, microwave, organ, furniture, sewing machine, mooded, 47-6924 Hui Kulu St. Kaneohe 239-6432.

CLOSE OUT — Wrangler kids samples an even greater price reduction. Sat., Nov. 21, 9-5 p.m., Sun., Nov. 22, 9-3 p.m., 830 Waiwae Rd., Kailua.

• 72 GARAGE & LANAI SALE

MOVING Everything must go, 11/21 & 22, microwave, organ, furniture, sewing machine, mooded, 47-6924 Hui Kulu St. Kaneohe 239-6432.

CLOSE OUT — Wrangler kids samples an even greater price reduction. Sat., Nov. 21, 9-5 p.m., Sun., Nov. 22, 9-3 p.m., 830 Waiwae Rd., Kailua.

• 73 GARAGE & LANAI SALE

MOVING Everything must go, 11/21 & 22, microwave, organ, furniture, sewing machine, mooded, 47-6924 Hui Kulu St. Kaneohe 239-6432.

CLOSE OUT — Wrangler kids samples an even greater price reduction. Sat., Nov. 21, 9-5 p.m., Sun., Nov. 22, 9-3 p.m., 830 Waiwae Rd., Kailua.

• 74 GARAGE & LANAI SALE

MOVING Everything must go, 11/21 & 22, microwave, organ, furniture, sewing machine, mooded, 47-6924 Hui Kulu St. Kaneohe 239-6432.

CLOSE OUT — Wrangler kids samples an even greater price reduction. Sat., Nov. 21, 9-5 p.m., Sun., Nov. 22, 9-3 p.m., 830 Waiwae Rd., Kailua.

• 75 GARAGE & LANAI SALE

MOVING Everything must go, 11/21 & 22, microwave, organ, furniture, sewing machine, mooded, 47-6924 Hui Kulu St. Kaneohe 239-6432.

CLOSE OUT — Wrangler kids samples an even greater price reduction. Sat., Nov. 21, 9-5 p.m., Sun., Nov. 22, 9-3 p.m., 830 Waiwae Rd., Kailua.

• 76 GARAGE & LANAI SALE

MOVING Everything must go, 11/21 & 22, microwave, organ, furniture, sewing machine, mooded, 47-6924 Hui Kulu St. Kaneohe 239-6432.

CLOSE OUT — Wrangler kids samples an even greater price reduction. Sat., Nov. 21, 9-5 p.m., Sun., Nov. 22, 9-3 p.m., 830 Waiwae Rd., Kailua.

• 68 GARAGE & LANAI SALE

MOVING Sale, 45-708 Waiwae St. Ph. 235-4829, Sat. & Sun. 9 a.m.-4 p.m.

GARAGE Sale 9 to 5 Nov. 21, 315 Kaimake Ln., Kailua. Handcrafted items, Xmas gifts, items, baked goods, plants & misc. items. Call 262-7943.

KOKUA Pottery, Hui Fall Show & Sale, Nov. 22, Sun. 9 to 4 at the Koko Kai YWCA, 45-035 Kaneohe Bay Dr.

CHRISTMAS Craft & gift boutique, Nov. 21, 9-3 p.m., 239 Ilihu St., Akahi Park. Ceramic angels, picture frames, soft sculptures, ornaments, wreaths, turkey centerpieces, handmade dolls, miniature canaries, Christmas items, Discovery Toys, table placemats, napkins & much more.

GUTTERS lights, boys shirts, odds & ends. Ph. 261-0153.

CHRISTMAS CRAFT SALE: 120 Omoa St., Kailua, Nov. 21-22, inexpensive. Handmade gifts, Christmas cards, note paper and ornaments, Bakits-Plants and Pots, Petroliq rubbings and jewelry.

CHRISTMAS Boutique & Crafts, Fri. & Sat., Nov. 20 & 21, 412 Keolu Drive, Kailua 9 to 4 Everyone welcome.

SALE Books for children. NEW not used! Discovery Toys & handcrafted original Christmas cards. Sat. Nov. 21, 11 a.m.-2 p.m. at Maunawili Elementary School cafeteria. Sponsored by Parent Participation Nursery School.

MOVING Sale, Stereo/color TV console \$200, Trundle bed, \$250, rattan couch, \$350, bumper pool table, \$25, baby items, children's books & games, clothes, household items, plenty more. 118 Kailua Pt., 9-9 p.m., Sat. & Sun.

• 69 GARAGE & LANAI SALE

SALE Books for children. NEW not used! Discovery Toys & handcrafted original Christmas cards. Sat. Nov. 21, 11 a.m.-2 p.m. at Maunawili Elementary School cafeteria. Sponsored by Parent Participation Nursery School.

MOVING Sale, Stereo/color TV console \$200, Trundle bed, \$250, rattan couch, \$350, bumper pool table, \$25, baby items, children's books & games, clothes, household items, plenty more. 118 Kailua Pt., 9-9 p.m., Sat. & Sun.

• 70 GARAGE & LANAI SALE

SALE Books for children. NEW not used! Discovery Toys & handcrafted original Christmas cards. Sat. Nov. 21, 11 a.m.-2 p.m. at Maunawili Elementary School cafeteria. Sponsored by Parent Participation Nursery School.

MOVING Sale, Stereo/color TV console \$200, Trundle bed, \$250, rattan couch, \$350, bumper pool table, \$25, baby items, children's books & games, clothes, household items, plenty more. 118 Kailua Pt., 9-9 p.m., Sat. & Sun.

• 71 GARAGE & LANAI SALE

SALE Books for children. NEW not used! Discovery Toys & handcrafted original Christmas cards. Sat. Nov. 21, 11 a.m.-2 p.m. at Maunawili Elementary School cafeteria. Sponsored by Parent Participation Nursery School.

MOVING Sale, Stereo/color TV console \$200, Trundle bed, \$250, rattan couch, \$350, bumper pool table, \$25, baby items, children's books & games, clothes, household items, plenty more. 118 Kailua Pt., 9-9 p.m., Sat. & Sun.

• 72 GARAGE & LANAI SALE

SALE Books for children. NEW not used! Discovery Toys & handcrafted original Christmas cards. Sat. Nov. 21, 11 a.m.-2 p.m. at Maunawili Elementary School cafeteria. Sponsored by Parent Participation Nursery School.

MOVING Sale, Stereo/color TV console \$200, Trundle bed, \$250, rattan couch, \$350, bumper pool table, \$25, baby items, children's books & games, clothes, household items, plenty more. 118 Kailua Pt., 9-9 p.m., Sat. & Sun.

• 73 GARAGE & LANAI SALE

SALE Books for children. NEW not used! Discovery Toys & handcrafted original Christmas cards. Sat. Nov. 21, 11 a.m.-2 p.m. at Maunawili Elementary School cafeteria. Sponsored by Parent Participation Nursery School.

MOVING Sale, Stereo/color TV console \$200, Trundle bed, \$250, rattan couch, \$350, bumper pool table, \$25, baby items, children's books & games, clothes, household items, plenty more. 118 Kailua Pt., 9-9 p.m., Sat. & Sun.

• 74 GARAGE & LANAI SALE

SALE Books for children. NEW not used! Discovery Toys & handcrafted original Christmas cards. Sat. Nov. 21, 11 a.m.-2 p.m. at Maunawili Elementary School cafeteria. Sponsored by Parent Participation Nursery School.

MOVING Sale, Stereo/color TV console \$200, Trundle bed, \$250, rattan couch, \$350, bumper pool table, \$25, baby items, children's books & games, clothes, household items, plenty more. 118 Kailua Pt., 9-9 p.m., Sat. & Sun.

• 75 GARAGE & LANAI SALE

SALE Books for children. NEW not used! Discovery Toys & handcrafted original Christmas cards. Sat. Nov. 21, 11 a.m.-2 p.m. at Maunawili Elementary School cafeteria. Sponsored by Parent Participation Nursery School.

MOVING Sale, Stereo/color TV console \$200, Trundle bed, \$250, rattan couch, \$350, bumper pool table, \$25, baby items, children's books & games, clothes, household items, plenty more. 118 Kailua Pt., 9-9 p.m., Sat. & Sun.

• 76 GARAGE & LANAI SALE

SALE Books for children. NEW not used! Discovery Toys & handcrafted original Christmas cards. Sat. Nov. 21, 11 a.m.-2 p.m. at Maunawili Elementary School cafeteria. Sponsored by Parent Participation Nursery School.

MOVING Sale, Stereo/color TV console \$200, Trundle bed, \$250, rattan couch, \$350, bumper pool table, \$25, baby items, children's books & games, clothes, household items, plenty more. 118 Kailua Pt., 9-9 p.m., Sat. & Sun.

• 77 GARAGE & LANAI SALE

SALE Books for children. NEW not used! Discovery Toys & handcrafted original Christmas cards. Sat. Nov. 21, 11 a.m.-2 p.m. at Maunawili Elementary School cafeteria. Sponsored by Parent Participation Nursery School.

MOVING Sale, Stereo/color TV console \$200, Trundle bed, \$250, rattan couch, \$350, bumper pool table, \$25, baby items, children's books & games, clothes, household items, plenty more. 118 Kailua Pt., 9-9 p.m., Sat. & Sun.

• 78 GARAGE & LANAI SALE

SALE Books for children. NEW not used! Discovery Toys & handcrafted original Christmas cards. Sat. Nov. 21, 11 a.m.-2 p.m. at Maunawili Elementary School cafeteria. Sponsored by Parent Participation Nursery School.

MOVING Sale, Stereo/color TV console \$200, Trundle bed, \$250, rattan couch, \$350, bumper pool table, \$25, baby items, children's books & games, clothes, household items, plenty more. 118 Kailua Pt., 9-9 p.m., Sat. & Sun.

• 79 GARAGE & LANAI SALE

SALE Books for children. NEW not used! Discovery Toys & handcrafted original Christmas cards. Sat. Nov. 21, 11 a.m.-2 p.m. at Maunawili Elementary School cafeteria. Sponsored by Parent Participation Nursery School.

MOVING Sale, Stereo/color TV console \$200, Trundle bed, \$250, rattan couch, \$350, bumper pool table, \$25, baby items, children's books & games, clothes, household items, plenty more. 118 Kailua Pt., 9-9 p.m., Sat. & Sun.

• 80 GARAGE & LANAI SALE

SALE Books for children. NEW not used! Discovery Toys & handcrafted original Christmas cards. Sat. Nov. 21, 11 a.m.-2 p.m. at Maunawili Elementary School cafeteria. Sponsored by Parent Participation Nursery School.

MOVING Sale, Stereo/color TV console \$200, Trundle bed, \$250, rattan couch, \$350, bumper pool table, \$25, baby items, children's books & games, clothes, household items, plenty more. 118 Kailua Pt., 9-9 p.m., Sat. & Sun.

• 81 GARAGE & LANAI SALE

SALE Books for children. NEW not used! Discovery Toys & handcrafted original Christmas cards. Sat. Nov. 21, 11 a.m.-2 p.m. at Maunawili Elementary School cafeteria. Sponsored by Parent Participation Nursery School.

MOVING Sale, Stereo/color TV console \$200, Trundle bed, \$250, rattan couch, \$350, bumper pool table, \$25, baby items, children's books & games, clothes, household items, plenty more. 118 Kailua Pt., 9-9 p.m., Sat. & Sun.

• 82 GARAGE & LANAI SALE

SALE Books for children. NEW not used! Discovery Toys & handcrafted original Christmas cards. Sat. Nov. 21, 11 a.m.-2 p.m. at Maunawili Elementary School cafeteria. Sponsored by Parent Participation Nursery School.

MOVING Sale, Stereo/color TV console \$200, Trundle bed, \$250, rattan couch, \$350, bumper pool table, \$25, baby items, children's books & games, clothes, household items, plenty more. 118 Kailua Pt., 9-9 p.m., Sat. & Sun.

• 83 GARAGE & LANAI SALE

SALE Books for children. NEW not used! Discovery Toys & handcrafted original Christmas cards. Sat. Nov. 21, 11 a.m.-2 p.m. at Maunawili Elementary School cafeteria. Sponsored by Parent Participation Nursery School.

MOVING Sale, Stereo/color TV console \$200, Trundle bed, \$250, rattan couch, \$350, bumper pool table, \$25, baby items, children's books & games, clothes, household items, plenty more. 118 Kailua Pt., 9-9 p.m., Sat. & Sun.

• 73 APTS. FURNISHED

LG studio apt., priv. entrance, bath, w/ kitchen. Call afternoons/eves 262-9439.

DYNAMITE Units, available now, all amenities, furn., or unfurn., \$200-\$240. Ph. 536-0412, 942-3831.

KAILUA 2 bdrm., 2 bath, furn., avail. 11/1, \$550 month. 261-9111.

75 APTS. PARTLY FURN.
KANEHOE, Nani Koolau, 2 bdrm., 1 1/2 bath Avail. 1 Dec. 5475 + elec 955-7838.

KAILUA studio, apt. building, water, quiet tenants wanted \$300 262-6462.

76 RENTALS TO SHARE
KANEHOE, Room for rent, relaxed atmosphere, \$200 mo. Ph. 335-3571.

KAILUA - share furn., 1 bdrm., w/ pool, \$250/mo., avail., 12/1. Call 251-1781 after 5 p.m.

KAILUA, nicely furnished room for rent in large happy home \$200 + util., evenings 262-9489.

KAILUA Gardens, modern comfy, spacious apt., own rm./bath, full amenities. Ph. Phyllis days 942-8831.

PAOLO, 2 females/same, 3 bdrm. house, ocean view, no smokers \$185-\$200, + util., dep. 734-2930.

KAILUA, Room for rent \$200 + util., dep. 261-2142, 261-6168 female pref.

• 73 APTS. FURNISHED

KANEHOE, Hailu, share 2 bdrm., 2 bath furn., 1 1/2 util. Quiet, pro \$225, 235-1142 early a.m. or late eve.

KAILUA, Quiet, neat, working woman to share w/same 2 bdrm apt. \$175/mo., util., \$175 dep. Avail. Nov. 25, 261-7464 eves.

• 74 GARAGE & LANAI SALE

KANEHOE, Hailu, share 2 bdrm., 2 bath furn., 1 1/2 util. Quiet, pro \$225, 235-1142 early a.m. or late eve.

KAILUA, Quiet, neat, working woman to share w/same 2 bdrm apt. \$175/mo., util., \$175 dep. Avail. Nov. 25, 261-7464 eves.

• 75 GARAGE & LANAI SALE

KANEHOE, Hailu, share 2 bdrm., 2 bath furn., 1 1/2 util. Quiet, pro \$225, 235-1142 early a.m. or late eve.

KAILUA, Quiet, neat, working woman to share w/same 2 bdrm apt. \$175/mo., util., \$175 dep. Avail. Nov. 25, 261-7464 eves.

• 76 GARAGE & LANAI SALE

KANEHOE, Hailu, share 2 bdrm., 2 bath furn., 1 1/2 util. Quiet, pro \$225, 235-1142 early a.m. or late eve.

KAILUA, Quiet, neat, working woman to share w/same 2 bdrm apt. \$175/mo., util., \$175 dep. Avail. Nov. 25, 261-7464 eves.

• 77 GARAGE & LANAI SALE

KANEHOE, Hailu, share 2 bdrm., 2 bath furn., 1 1/2 util. Quiet, pro \$225, 235-1142 early a.m. or late eve.

KAILUA, Quiet, neat, working woman to share w/same 2 bdrm apt. \$175/mo., util., \$175 dep. Avail. Nov. 25, 261-7464 eves.

• 78 GARAGE & LANAI SALE

KANEHOE, Hailu, share 2 bdrm., 2 bath furn., 1 1/2 util. Quiet, pro \$225, 235-1142 early a.m. or late eve.

KAILUA, Quiet, neat, working woman to share w/same 2 bdrm apt. \$175/mo., util., \$175 dep. Avail. Nov. 25, 261-7464 eves.

• 79 GARAGE & LANAI SALE

KANEHOE, Hailu, share 2 bdrm., 2 bath furn., 1 1/2 util. Quiet, pro \$225, 235-1142 early a.m. or late eve.

KAILUA, Quiet, neat, working woman to share w/same 2 bdrm apt. \$175/mo., util., \$175 dep. Avail. Nov. 25, 261-7464 eves.

• 80 GARAGE & LANAI SALE

KANEHOE, Hailu, share 2 bdrm., 2 bath furn., 1 1/2 util. Quiet, pro \$225, 235-1142 early a.m. or late eve.

KAILUA, Quiet, neat, working woman to share w/same 2 bdrm apt. \$175/mo., util., \$175 dep. Avail. Nov. 25, 261-7464 eves.

• 81 GARAGE & LANAI SALE

KANEHOE, Hailu, share 2 bdrm., 2 bath furn., 1 1/2 util. Quiet, pro \$225, 235-1142 early a.m. or late eve.

KAILUA, Quiet, neat, working woman to share w/same 2 bdrm apt. \$175/mo., util., \$175 dep. Avail. Nov. 25, 261-7464 eves.

• 82 GARAGE & LANAI SALE

KANEHOE, Hailu, share 2 bdrm., 2 bath furn., 1 1/2 util. Quiet, pro \$225, 235-1142 early a.m. or late eve.

KAILUA, Quiet, neat, working woman to share w/same 2 bdrm apt. \$175/mo., util., \$175 dep. Avail. Nov. 25, 261-7464 eves.

• 83 GARAGE & LANAI SALE

KANEHOE, Hailu, share 2 bdrm., 2 bath furn., 1 1/2 util. Quiet, pro \$225, 235-1142 early a.m. or late eve.

KAILUA, Quiet, neat, working woman to share w/same 2 bdrm apt. \$175/mo., util., \$175 dep. Avail. Nov. 25, 261-7464 eves.

• 84 GARAGE & LANAI SALE

KANEHOE, Hailu, share 2 bdrm., 2 bath furn., 1 1/2 util. Quiet, pro \$225, 235-1142 early a.m. or late eve.

KAILUA, Quiet, neat, working woman to share w/same 2 bdrm apt. \$175/mo., util., \$175 dep. Avail. Nov. 25, 261-7464 eves.

• 85 GARAGE & LANAI SALE

KANEHOE, Hailu, share 2 bdrm., 2 bath furn., 1 1/2 util. Quiet, pro \$225, 235-1142 early a.m. or late eve.

KAILUA, Quiet, neat, working woman to share w/same 2 bdrm apt. \$175/mo., util., \$175 dep. Avail. Nov. 25, 261-7464 eves.

• 86 GARAGE & LANAI SALE

KANEHOE, Hailu, share 2 bdrm., 2 bath furn., 1 1/2 util. Quiet, pro \$225, 235-1142 early a.m. or late eve.

KAILUA, Quiet, neat, working woman to share w/same 2 bdrm apt. \$175/mo., util., \$175 dep. Avail. Nov. 25, 261-7464 eves.

• 87 GARAGE & LANAI SALE

KANEHOE, Hailu, share 2 bdrm., 2 bath furn., 1 1/2 util. Quiet, pro \$225, 235-1142 early a.m. or late eve.

KAILUA, Quiet, neat, working woman to share w/same 2 bdrm apt. \$175/mo., util., \$175 dep. Avail. Nov. 25, 261-7464 eves.

• 76 RENTALS TO SHARE

KAILUA, own room, in lovely quiet family home, pool, \$225 plus util. Ph. 261-9656.

81 HOUSES FURN.
HONEYMOON Cottage, charming 1 bdrm., \$365 + elec. Adults only, Aiea area 239-6807.

KAILUA 3 bdrm., bch 1 blk, town 3 bks, on bus line, \$780, 154 Mahealani, 262-8028.

82 HOUSES UNFURN.
KANEHOE 2 bdrm., water incl., \$330/mo. 247-3254.

83 HOUSES PARTLY FURNISHED
WAI'AHU Estates, 3 bdrm., 2 bath, carpets, drapes, yard, patio, \$550, 677-9614.

KANEHOE 1 bdrm., fenced yard, 2 car garage, married couples, no kids/pets, \$325, avail. 12/15 247-1872.

KAILUA, Aiea park, 5 bdrm., 2 story, 2,400 sq. ft. pool, \$850, 261-1111.

SUNSET Beach, ocean view,

• 114 REAL ESTATE FOR SALE

KAILUA: Aikahi Park, 5 bdrm., 2 bath, 2400 sq. ft., pool, 2nd floor, \$195,000 value. Priced \$148,000. Call 261-1111

WELL CONSTRUCTED hollow tile 3 bedroom home in the country. This one is in excellent condition. Just 1/2 block to the beach and backyard is completely fenced. Small down payment to \$50,000. \$115,000. FEE MLS82326. Betty Oliver (R) 487-1095

LIZ BENTON Realtors 487-7961

HOKULOA: 3 bdrm., 1 1/2 bath, 1000 sq. ft., pool, 2nd floor, \$115,000. Super financing \$115,900. \$115,900. Name your terms \$141,900. Mike McCormack Realtors 235-4424 or 247-6681

Kailua: 2 bdrm., 2 bath, 1100 sq. ft., pool, 2nd floor, \$115,000. Super financing \$115,900. Name your terms \$141,900. Mike McCormack Realtors 235-4424 or 247-6681

Kailua: 2 bdrm., 2 bath, 1100 sq. ft., pool, 2nd floor, \$115,000. Super financing \$115,900. Name your terms \$141,900. Mike McCormack Realtors 235-4424 or 247-6681

Kailua: 2 bdrm., 2 bath, 1100 sq. ft., pool, 2nd floor, \$115,000. Super financing \$115,900. Name your terms \$141,900. Mike McCormack Realtors 235-4424 or 247-6681

Kailua: 2 bdrm., 2 bath, 1100 sq. ft., pool, 2nd floor, \$115,000. Super financing \$115,900. Name your terms \$141,900. Mike McCormack Realtors 235-4424 or 247-6681

Kailua: 2 bdrm., 2 bath, 1100 sq. ft., pool, 2nd floor, \$115,000. Super financing \$115,900. Name your terms \$141,900. Mike McCormack Realtors 235-4424 or 247-6681

Kailua: 2 bdrm., 2 bath, 1100 sq. ft., pool, 2nd floor, \$115,000. Super financing \$115,900. Name your terms \$141,900. Mike McCormack Realtors 235-4424 or 247-6681

Kailua: 2 bdrm., 2 bath, 1100 sq. ft., pool, 2nd floor, \$115,000. Super financing \$115,900. Name your terms \$141,900. Mike McCormack Realtors 235-4424 or 247-6681

Kailua: 2 bdrm., 2 bath, 1100 sq. ft., pool, 2nd floor, \$115,000. Super financing \$115,900. Name your terms \$141,900. Mike McCormack Realtors 235-4424 or 247-6681

Kailua: 2 bdrm., 2 bath, 1100 sq. ft., pool, 2nd floor, \$115,000. Super financing \$115,900. Name your terms \$141,900. Mike McCormack Realtors 235-4424 or 247-6681

Kailua: 2 bdrm., 2 bath, 1100 sq. ft., pool, 2nd floor, \$115,000. Super financing \$115,900. Name your terms \$141,900. Mike McCormack Realtors 235-4424 or 247-6681

Kailua: 2 bdrm., 2 bath, 1100 sq. ft., pool, 2nd floor, \$115,000. Super financing \$115,900. Name your terms \$141,900. Mike McCormack Realtors 235-4424 or 247-6681

Kailua: 2 bdrm., 2 bath, 1100 sq. ft., pool, 2nd floor, \$115,000. Super financing \$115,900. Name your terms \$141,900. Mike McCormack Realtors 235-4424 or 247-6681

Kailua: 2 bdrm., 2 bath, 1100 sq. ft., pool, 2nd floor, \$115,000. Super financing \$115,900. Name your terms \$141,900. Mike McCormack Realtors 235-4424 or 247-6681

Kailua: 2 bdrm., 2 bath, 1100 sq. ft., pool, 2nd floor, \$115,000. Super financing \$115,900. Name your terms \$141,900. Mike McCormack Realtors 235-4424 or 247-6681

Kailua: 2 bdrm., 2 bath, 1100 sq. ft., pool, 2nd floor, \$115,000. Super financing \$115,900. Name your terms \$141,900. Mike McCormack Realtors 235-4424 or 247-6681

Kailua: 2 bdrm., 2 bath, 1100 sq. ft., pool, 2nd floor, \$115,000. Super financing \$115,900. Name your terms \$141,900. Mike McCormack Realtors 235-4424 or 247-6681

Kailua: 2 bdrm., 2 bath, 1100 sq. ft., pool, 2nd floor, \$115,000. Super financing \$115,900. Name your terms \$141,900. Mike McCormack Realtors 235-4424 or 247-6681

Kailua: 2 bdrm., 2 bath, 1100 sq. ft., pool, 2nd floor, \$115,000. Super financing \$115,900. Name your terms \$141,900. Mike McCormack Realtors 235-4424 or 247-6681

Kailua: 2 bdrm., 2 bath, 1100 sq. ft., pool, 2nd floor, \$115,000. Super financing \$115,900. Name your terms \$141,900. Mike McCormack Realtors 235-4424 or 247-6681

Kailua: 2 bdrm., 2 bath, 1100 sq. ft., pool, 2nd floor, \$115,000. Super financing \$115,900. Name your terms \$141,900. Mike McCormack Realtors 235-4424 or 247-6681

Kailua: 2 bdrm., 2 bath, 1100 sq. ft., pool, 2nd floor, \$115,000. Super financing \$115,900. Name your terms \$141,900. Mike McCormack Realtors 235-4424 or 247-6681

Kailua: 2 bdrm., 2 bath, 1100 sq. ft., pool, 2nd floor, \$115,000. Super financing \$115,900. Name your terms \$141,900. Mike McCormack Realtors 235-4424 or 247-6681

Kailua: 2 bdrm., 2 bath, 1100 sq. ft., pool, 2nd floor, \$115,000. Super financing \$115,900. Name your terms \$141,900. Mike McCormack Realtors 235-4424 or 247-6681

Kailua: 2 bdrm., 2 bath, 1100 sq. ft., pool, 2nd floor, \$115,000. Super financing \$115,900. Name your terms \$141,900. Mike McCormack Realtors 235-4424 or 247-6681

Kailua: 2 bdrm., 2 bath, 1100 sq. ft., pool, 2nd floor, \$115,000. Super financing \$115,900. Name your terms \$141,900. Mike McCormack Realtors 235-4424 or 247-6681

Kailua: 2 bdrm., 2 bath, 1100 sq. ft., pool, 2nd floor, \$115,000. Super financing \$115,900. Name your terms \$141,900. Mike McCormack Realtors 235-4424 or 247-6681

Kailua: 2 bdrm., 2 bath, 1100 sq. ft., pool, 2nd floor, \$115,000. Super financing \$115,900. Name your terms \$141,900. Mike McCormack Realtors 235-4424 or 247-6681

Kailua: 2 bdrm., 2 bath, 1100 sq. ft., pool, 2nd floor, \$115,000. Super financing \$115,900. Name your terms \$141,900. Mike McCormack Realtors 235-4424 or 247-6681

Kailua: 2 bdrm., 2 bath, 1100 sq. ft., pool, 2nd floor, \$115,000. Super financing \$115,900. Name your terms \$141,900. Mike McCormack Realtors 235-4424 or 247-6681

Kailua: 2 bdrm., 2 bath, 1100 sq. ft., pool, 2nd floor, \$115,000. Super financing \$115,900. Name your terms \$141,900. Mike McCormack Realtors 235-4424 or 247-6681

Kailua: 2 bdrm., 2 bath, 1100 sq. ft., pool, 2nd floor, \$115,000. Super financing \$115,900. Name your terms \$141,900. Mike McCormack Realtors 235-4424 or 247-6681

Kailua: 2 bdrm., 2 bath, 1100 sq. ft., pool, 2nd floor, \$115,000. Super financing \$115,900. Name your terms \$141,900. Mike McCormack Realtors 235-4424 or 247-6681

Kailua: 2 bdrm., 2 bath, 1100 sq. ft., pool, 2nd floor, \$115,000. Super financing \$115,900. Name your terms \$141,900. Mike McCormack Realtors 235-4424 or 247-6681

Kailua: 2 bdrm., 2 bath, 1100 sq. ft., pool, 2nd floor, \$115,000. Super financing \$115,900. Name your terms \$141,900. Mike McCormack Realtors 235-4424 or 247-6681

Kailua: 2 bdrm., 2 bath, 1100 sq. ft., pool, 2nd floor, \$115,000. Super financing \$115,900. Name your terms \$141,900. Mike McCormack Realtors 235-4424 or 247-6681

Kailua: 2 bdrm., 2 bath, 1100 sq. ft., pool, 2nd floor, \$115,000. Super financing \$115,900. Name your terms \$141,900. Mike McCormack Realtors 235-4424 or 247-6681

Kailua: 2 bdrm., 2 bath, 1100 sq. ft., pool, 2nd floor, \$115,000. Super financing \$115,900. Name your terms \$141,900. Mike McCormack Realtors 235-4424 or 247-6681

Kailua: 2 bdrm., 2 bath, 1100 sq. ft., pool, 2nd floor, \$115,000. Super financing \$115,900. Name your terms \$141,900. Mike McCormack Realtors 235-4424 or 247-6681

Kailua: 2 bdrm., 2 bath, 1100 sq. ft., pool, 2nd floor, \$115,000. Super financing \$115,900. Name your terms \$141,900. Mike McCormack Realtors 235-4424 or 247-6681

Kailua: 2 bdrm., 2 bath, 1100 sq. ft., pool, 2nd floor, \$115,000. Super financing \$115,900. Name your terms \$141,900. Mike McCormack Realtors 235-4424 or 247-6681

Kailua: 2 bdrm., 2 bath, 1100 sq. ft., pool, 2nd floor, \$115,000. Super financing \$115,900. Name your terms \$141,900. Mike McCormack Realtors 235-4424 or 247-6681

• 120 FURNITURE

DINETTE: Set table with 2 leaves and 6 chairs, good condition \$50. Call anytime 262-4130.

SOFA, loveseat & chair almost brand new, hardly used. Rust with mixed colors, \$550. Ph. 487-0773.

RATTAN, 3-pc. living room set. Nearly new covers on cushions 281-9952 after 5 p.m.

EASTERN king-size bed w/Sealy mattress/box spring & Ethan Allen canopied headboard. \$350/offer. 622-4955.

5 PC. bdrm. set: sofa & chair, coffee & end tables, console stereo, single bed, king size bed w/headboard, crib w/mattress, wood play pen; 3 directors chairs; bookcases; double end, adjust a bed; vinyl swivel rocker, boys bike. 623-7074.

SOFA: chair, loveseat; coffee table; 2 end tables, excl. cond. Ph. 422-2394.

ANTIQUE White twin bed frame & dresser, \$95. All walnut desk, \$95. Maple canopy crib, complete, \$85. Green slipcovered chair, \$20. Ph. 259-5313.

CHEST of drawers \$30; bar/valet/2 swivel chairs \$175. Call 623-1552.

ANTIQUE 6 pc. dinette set, table w/2 bar stools & matching buffet \$450. 262-5902.

• 123 RENTALS

• NEW BED SALE •

TWIN SET COMPLETE \$159.00

DOUBLE SET COMPLETE \$179.00

QUEEN SET COMPLETE \$195.00

KING SET COMPLETE \$289.00

BABY CRIBS \$175.00

WATERBEDS FROM \$379.00

Quality English Construction With Durable Cover

FREE DELIVERY BED RENTALS, HAWAII

3632 WAIALAE AVE HONOLULU, HI 735-2448

"Remember, Portuguese Beds Make Better Lovers"

• 126 MISCELLANEOUS

125 GALLON Aquarium, all glass, stand, hood, light, gravel, 2 pumps, plants, make offer. 254-3607.

UPHOLSTERY Fabric remnants for sale. Fri. & Sat. 675 Kaimali St., Kailua.

SURFING isn't just for boys. It's for ladies' too. Join us. Call Surf in Slim Club. 487-2638.

DRESSER/mirror, chest, nightstand, full size headboard \$350 for set, drapes \$50; pole lamp, \$25; crock pot \$10; deep fat fryer \$15. Will take offers. 254-4245.

Alea Air Conditioning & Refrigeration

We pay cash for used/unused/ broken air conditioners, refrigerators & freezers. Sales, service & repairs on all makes & models. Free on-site air conditioning, refrigerators & freezers. Ph. 487-7479.

LADIES Golf clubs, 1981 Lynx Tigress Elegance, 1, 3, 4 & 5 wood. Used 3 times, excl. cond. \$120. Ph. 257-3321. DWH. or 254-2894 eves.

SCOTT Brothers bicycle, mint condition. Offer. Call 623-2416.

20,000 BTU WESTERN Auto air conditioner, \$400/best offer. Ph. 254-5078.

2-28" suitcases, used only once \$25 each. Call 395-1681.

LAWN MOWER, gas, 3 h.p., rotary, runs well, \$35. Ph. 262-8821.

YOLY KAY COSMETICS. For re-orders & FREE facials, call YOLY 259-9021.

• 126 MISCELLANEOUS

REPO KIRBY Vacuum Cleaner complete attachments 9 months old. Best offer Ph. 262-6584

2 SEARS MX bicycles 16" \$60 each; Mongoose blue Max 20" new \$180. 623-7724.

BEAUTIFUL Xmas Gift! 10 strand Kamelelani Nihau shell necklace-opera length. \$350. Eves 488 7048.

WHIRLPOOL frost free refrigerator 23 cu. ft., avocado, excl. cond., no rust \$350; Kirby vacuum w/shampoo attachments \$250. 239-8149.

ROY'S LAWN MOWER REPAIR "Free Estimate" Lawn mowers for sale Rotary \$85, Reel \$125. Guaranteed 259-5927

MINI TRAMPOLINES from \$59-\$139 & 1 month FREE membership at Skinies. 955-5916.

AIRPLANE rides around Oahu \$35 for 3 people on a 1 hour flight. Call Clay or Gail 254-5090 AWH.

CONTACT LENS 30% OFF HARD LENS 50% OFF PH. 456-2622

10 SPEED Schwinn Varsity boys bike, \$60. Ph. 262-4765.

ATTENTION Military Families, Armed Forces Benefit and Aid Association offers excellent savings on Dental, appliances, furniture, & much more. Call 261-6728 for more info.

GE washer & dryer, excl. cond. \$500; Jalousie louvers & windows \$80. Xmas tree w/all trimmings \$80. Call 836-5851 after 5 p.m.

SCHELLER-APOIAN Specialties Manufacturers "BUTTONS" "BADGES" Quick Service 239-7155

SEARS Cement mixer, 2 1/2 wk cap. \$150. Call 261-5027.

CARPET 9 x 15, green, \$100. Call 239-5695.

KIRBY Vacuum, cost \$600, like new, must sell, \$195. Ph. 455-5841, 923-7943.

NEO-LIFE NEST FOOD STORAGE PLANS 40% DISCOUNT SAVE UP TO \$495! WHILE CURRENT STOCK LASTS CALL 395-1814

FREEZER, 20 cu. ft., avocado, upright, 3 mos. old, new \$800, asking \$375. Heavy duty lawn mower, \$145. Men & women's golf clubs, incl. bag & cart, never used, \$85 ea. Misc. items incl. chairs, tables, fan, drapes. 262-2591.

WASHERS/dryers, set \$310; dishwasher, \$175; RCA 25" Accucolor Tv, \$200, all excl. Ph. 623-1543.

EUROPEAN Delicacies, the finest cakes and pastries. Holiday Specials: Buch Noel, Croquembouche, Cream Filled Wreath, Brandy Fruit Cake. Call 261-7058 will deliver.

SEARS Frostless refrig. 17 cu. ft., auto, ice maker, model 623-0870.

SCASHS For your GOLD SILVER DIAMONDS WINDOW GOLD (Above Satellite City Mall)

WASHER \$120, dryer \$100, refrig. \$70, hand mower \$16, can vacuum no attachments \$20, stereo combo \$240. 262-0324.

VACUUM Cleaners, Holiday Sale, reconditioned w/ warranty \$1850 & up. Trade ins welcome. Ph. 239-8678.

• 126 MISCELLANEOUS

76 VESPA Grande 780 cc moped \$450. Call 422-5180.

MAKE Xmas shopping easy! You can save time & postage. Free Brochure. 239-8995

RUM Cakes baked daily. Will deliver. Ph. 239-7070.

POTTERY FAIR Exhibition & Sale of pottery & ceramic sculpture by THE WINDWARD POTTERS at Lanikai Community Center at Lanikai, Hawaii. November 21 from 9 a.m. to 3 p.m. Hargains for Xmas Shoppers.

VACUUM Cleaners, like new, with gas, \$19.95 & up. 456-4211, 765 Kam. Hwy.

BEST Video Library in Hawaii! Sales, Service & Rentals. Video Center of Hawaii, Ph. 836-5050 or 261-2022.

Big Money on your Milk Bill! 14 Half Gals. milk after \$14 Food Stamps welcome. Food & Nutrition Service. Meadow Fresh Certified Distributor. #6923399. 247-2645, 247-8481 eves. 261-7768 Bu.

POOL table w/accessories \$450; ping pong table \$60, misc. items. 293-5838.

MARY Kay Cosmetic for re-order and Free Facial. Call Elizabeth. 262-0463.

EASY Xmas money, will pay 10¢ ea. for old coconuts w/milk, will pick up anywhere on the island w/minimum of 100 Ph. 261-1134, or drop off locations at Kaneohe District Park, Kailua District Park, Pearl City District Park, Aiea Haina Shopping Center & Hahaione Park, Waipahu, Sat. Nov. 14 8 a.m.-1 p.m.

"XMAS MAGIC" a Potpourri of Handmade Crafts Fri. Nov. 27; Sat. Nov. 28 9 a.m. to 1 p.m. Corner of Nahu St. & Heala St. (Alii Shores)

CLOWN For parties, birthdays, Xmas, special events, animal balloons, party goods for every child. Special balloons for the special child. Low prices, 10% discount w/this ad. Ph. 488-0702.

AM/FM stereo receiver Concept 45 watts per channel \$175. Call 239-9253.

SEWING machines, reconditioned \$59.95 and up. Call 488-9966.

CHRISTMAS GIFT! Movie camera, 26" 10 speed mm bike, push mower, call 625-0062 for information.

AMF Pro Tour 10 spd bike, like new \$125. Call 239-7291.

9 x 9 L.T. GREEN rug. \$45.00 After 6 p.m., call 262-5177.

HOT Tub, triangular redwood & stainless steel pump & cover, best offer over \$700. Call 237-8281.

DOLL HOUSES Crafts Miniature Furniture Gifts Country Cousin 333 Ulukou Kailua - 267-4288

WROUGHT-iron, glass-top table 35" x 61", 4 chrs., \$275/offer. Table lamp, elect. fry pan, misc. 239-8118.

PANELING (over bought) 6 new sheets, walnut color, \$6.50 ea., or trade for 77 261-0404.

TOSHIBA 20 watt receiver, BSR auto, turntable, & 2 speakers, \$150, loveseat & chair, \$50. 262-9378.

• 127 MISCELLANEOUS

BEVELED mirror \$50, bunk bed \$150, double like new w/frame \$125; posturepedic twin \$90, 5 dr chest \$40, rattan sw. rocker \$60, antique sofa appraised over \$4000, now \$1800, unusual Victorian loveseat excl. cond. \$900, elegant carved Chinese hall table & matching mirror \$900, also '68 International aluminum, a great buy at \$1500. Call 261-9994.

4 x 6 FOAM mattress \$10; Sears exercise bike \$35; bookshelves \$25; lg mirror \$15; bed spreads, lamps, curtains, macramé. 254-2622.

WHIRLPOOL Dishwasher, hardwood, top Only 8 mos. old, excl. cond. \$275. Ph. 456-9075.

SEARS washer/dryer, 6 yrs. old, \$150/offer. Call anytime. 623-9270.

18 cu. ft. GE refrig. \$350, 10 cu. ft. Amana freezer, \$225. Call 623-8701.

• 131 WIKI WIKI FREE BEE

FREE Kittens, 1 male, 1 female, grey & white, 7 weeks old, need good homes Ph. 845-9163 or 262-2275.

FREE 2-3 yr. old sisters, part German Shepherd, part Akita. Trained & disciplined. Ph. 261-9163 or 262-2275.

FREE 1 calico kitten left. Please someone give her a home. Call 262-8396.

FREE Benji like Silky mix, male, 1 yr., excl. house dog for children. 734-7764.

• 127 MISCELLANEOUS

SEARS washer & dryer, for sale, like new \$500 for both. 235-6633, 841-5857.

KENMORE washer, good condition \$195. Call 262-0687.

DON'T BE FOOLED into believing you have to pay \$4000 or more for a quality Solar system - shop around, then call Western Pacific. NAME BRANDS/Low overhead/YOU SAVE. WESTERN PACIFIC 735-4619.

REFRIG. (12

146 BOAT SUPPLIES & SERVICE

12' FIBERGLASS Fishing boat, Oars Johnson 6 h.p. motor very good cond. \$650. 261-0404.

20' SPORTCRUISER w/ trailer, no engine, 3 penn senator 12-0 reel w/line, 1 ocean city 6-0 reel w/line, various other trolling equipt., call 261-8477.

30' TRIMARAN, full cruise equipt., \$12,500. Ph. 254-4030.

14' HOBIE, \$1400. Ph. 262-4765.

2 MAN Kayak including paddle & pump. Best offer. Call 261-7440 eves.

19'6" RANGER, for fishing, diving, skiing, 140 Evinrude, many extras. \$5500. Call 235-2206.

151 PET SUPPLIES & SERVICE

AKC DOBERMAN Pinscher pups, black & rust with papers. 456-4472 \$250.

UKC American Pitbulls for sale, shots & papers, \$140 ea. Serious inquiries only 261-8356 evenings.

PIT/Boxer pups \$25, mother PIT/Boxer, Father Pitbull Assorted Koi's 5-7 inches \$3. Ph. 239-7261.

COCKATIE young plus 1 breeding pair. Ph. 261-3103.

AKC LHASA Apso pups, 12 weeks, call evenings 261-2067.

SEALPOINT Siamese kittens, 7 weeks old, w/out papers, \$45. Ph. 487-0409.

5 MONTH Female, Ridgeback good w/children. Call 422-2318.

156 AUTO PARTS & SERVICE

73 VW Squareback engine \$150, body & trans \$100. Call 254-2529.

FORD Transmission, all Ford engine parts. Offer 477-6986 7-4 p.m. Gary.

(1) T400 TRANS, (4) 15 x 8.5 lug, 160 x 15 for truck & van. 235-4707.

75 VW RABBIT Eng. trans. & misc. body parts 237-8030 after 5 p.m.

WINDWARD V.W. CLINIC

Mobile Volkswagen Repair Shop. Repairs done at your home by appointment only. Island Wide Service. PHONE 247-2525.

BATTERY FACTORY AUTO BATTERIES

20 1001 Kapiolani Avenue. PH. 734-6723.

161 AUTOS WANTED

USED Foreign car. Low miles. No rust. 70 and up. Will pay up to \$800. Kaneohe bank must see car. 235-4087 after 6 p.m. Sue.

161 AUTOS WANTED

WANTED: Car or truck, running or not. Will pay up to \$500. Ph. 396-8182.

166 PICKUPS, TRUCKS

78 CHEV. Blazer, 350 Automatic, 4 x 4 new paint, KCM556, UCD301, Ph. 841-4261.

80 CHEV. 1/2 Pickup, 4 x 4, 6 cylinder, 4 spd., AM/FM Stereo, Chrome speakers, 10 x 15 tires, 15,000 miles. FHS871, UCD301, Ph. 841-4261.

Overstocked in CHEVYS

Citation, Van, Blazer, Pickup. We are reaching for trade-ins. BIG SAVINGS. No reasonable offer refused AT. WHOLESALE MOTORS 836-1222 2999 N. Nimitz Hwy.

AAAAA SUPER DEALS AAAAA

LOTS OF PICKUPS AT WHOLESALE MOTORS Ph. 836-1222 2999 N. Nimitz Hwy.

AAAAA SUPER DEALS AAAAA

LOTS OF 4x4s at WHOLESALE MOTORS Ph. 836-1222 2999 N. Nimitz Hwy.

Overstocked in PICKUPS, 4x4s, VANS

We are reaching for trade-ins. BIG SAVINGS. No reasonable offer refused AT. WHOLESALE MOTORS Ph. 836-1222 2999 N. Nimitz Hwy.

Overstocked in 4x4s, PICKUPS, VANS

We are reaching for trade-ins. BIG SAVINGS. No reasonable offer refused AT. WHOLESALE MOTORS 836-1222 2999 N. Nimitz Hwy.

171 MOTORCYCLE SALES & SERVICE

81 YZ 80 \$700 offer. Call after 4 671-7871 or 671-7698.

81 SUZUKI Moped, two speed, auto, less than 200 mi. \$475. Call 235-5210 eves.

74 HONDA 550, good cond, reliable \$650. Call 499-1436 anytime.

78 HONDA Hawk, Cherry cond. Best offer. Ph. 624-5058.

77 SUZUKI GS400, good cond., \$450 best offer. Ph. 396-0545.

South Seas Cycle Exchange

TUNE-UP SPECIALS HARLEY KAWASAKI \$59.95 \$47.95

171 MOTORCYCLE SALES & SERVICE

81 YZ 80 \$700 offer. Call after 4 671-7871 or 671-7698.

171 MOTORCYCLE SALES & SERVICE

79 HONDA Express moped, good cond., \$350 offer. Ph. 235-3498.

173 AUTO ANNOUNCEMENTS

JEEPS, Cars, Pickups from \$35. Available at local Gov't. Auctions. For Directory call Surplus Data Center 415-330-7800.

174 RENT-A-CAR

RELIABLE Used Cars. Low Monthly and Weekly rates. Collision waiver extra. Auto Mart Car Rental, 98-068 Kam Hwy., Ala. Ph. 487-9991.

175 VANS, CAMPER & JEEPS

75 VW VAN, good shape, need tires. \$3500 or offer. Ph. 262-7679.

78 CHEVY 1/2 ton pickup 6-cyl., 4 spd., with compound low, fifties, new wide track tires (710TCR) \$2995 Shelly Used 836-0466 See today!

Overstocked in Vans, Pickups, 4x4s

We are reaching for trade-ins. BIG SAVINGS. No reasonable offer refused AT. WHOLESALE MOTORS 836-1222 2999 N. Nimitz Hwy.

176 AUTOS FOR SALE

BMW

77 530i \$8975. Excl. cond. 1 spd. 10/72/251.

76 530i \$7975. Excl. cond. auto. 10/72/251.

76 2002 \$6475. Fully accessorized 10/72/251.

WHOLESALE MOTORS Ph. 836-1222 2999 N. Nimitz Hwy.

BUICK

77 SENTRY wagon, auto, air, gnd. cond., \$1700 offer. Call 622-2433, 8-5 p.m.

78 BUICK Regal, sport cpe AM/FM radio, auto, AIR/48 \$5295 or best offer. VIP Auto 537-9921.

CADILLAC

70 EL DORADO Cadillac, needs some work, \$1200. Ph. 262-8708 after 5 p.m.

78 CADILLAC Coupe D'Ville, loaded with luxuries, metallic red with red leather, 100% financing 3x/1 (AYX627) \$5995 Shelly Used Cars 836-0466 Open til 9 p.m.

CHEVROLET

73 CHEVY Malibu, mags, RWL tires, 2 dr. hdp. a/t, p/s, \$650 261-5496.

67 NOVA wagon, power steering, V8, auto., \$550. Ph. 247-1778 eves.

74 CHEVY Vega, runs good, needs work \$350. Call 254-4152.

78 CAMARO, T-top, auto, 2/3 air, like new \$4000. Call 235-3180.

DATSUN

69 DATSUN, runs well, needs body work \$300. Call 254-1881.

73 240Z, 71,000 miles, new paint, radials, good mechanical cond., \$3000 best offer. 237-8424 after 6 p.m.

Overstocked in DATSUNS

2 dr. 4 dr. wagon, pickup. We are reaching for trade-ins. BIG SAVINGS. No reasonable offer refused AT. WHOLESALE MOTORS Ph. 836-1222 2999 N. Nimitz Hwy.

DODGE

78 DODGE Omni, 4 spd., 7418 \$2550 235-0068.

70 DODGE Dart, need starter/battery exc. interior, body good. As is \$300 or offer. 919-2600 eves.

78 DODGE Omni, excl. cond., std., 4 dr. low mileage, \$3400 Ph. 262-5897 after 5 p.m.

FIAT

74 FIAT Spider New top, front seat and battery \$2500 offer. Call 839-0892.

FORD

70 MUSTANG 2 dr. exc. trans & tires, runs well \$900. Call 821-5538.

79 FORD LTD station wagon 24,000 mi., excl. buy \$4700. Firm 261-4784.

65 FORD LTD, good running condition, good tires, excl. shape \$750, 923-7224 or 261-1211 ask for James.

67 MUSTANG convertible, excl. new valve job \$2995 offer. 523-4485, 623-4106.

FORD

70 MUSTANG 2 dr. exc. trans & tires, runs well \$900. Call 821-5538.

79 FORD LTD station wagon 24,000 mi., excl. buy \$4700. Firm 261-4784.

65 FORD LTD, good running condition, good tires, excl. shape \$750, 923-7224 or 261-1211 ask for James.

67 MUSTANG convertible, excl. new valve job \$2995 offer. 523-4485, 623-4106.

FORD

70 MUSTANG 2 dr. exc. trans & tires, runs well \$900. Call 821-5538.

79 FORD LTD station wagon 24,000 mi., excl. buy \$4700. Firm 261-4784.

65 FORD LTD, good running condition, good tires, excl. shape \$750, 923-7224 or 261-1211 ask for James.

67 MUSTANG convertible, excl. new valve job \$2995 offer. 523-4485, 623-4106.

FORD

70 MUSTANG 2 dr. exc. trans & tires, runs well \$900. Call 821-5538.

79 FORD LTD station wagon 24,000 mi., excl. buy \$4700. Firm 261-4784.

65 FORD LTD, good running condition, good tires, excl. shape \$750, 923-7224 or 261-1211 ask for James.

67 MUSTANG convertible, excl. new valve job \$2995 offer. 523-4485, 623-4106.

FORD

70 MUSTANG 2 dr. exc. trans & tires, runs well \$900. Call 821-5538.

79 FORD LTD station wagon 24,000 mi., excl. buy \$4700. Firm 261-4784.

65 FORD LTD, good running condition, good tires, excl. shape \$750, 923-7224 or 261-1211 ask for James.

67 MUSTANG convertible, excl. new valve job \$2995 offer. 523-4485, 623-4106.

FORD

70 MUSTANG 2 dr. exc. trans & tires, runs well \$900. Call 821-5538.

79 FORD LTD station wagon 24,000 mi., excl. buy \$4700. Firm 261-4784.

65 FORD LTD, good running condition, good tires, excl. shape \$750, 923-7224 or 261-1211 ask for James.

67 MUSTANG convertible, excl. new valve job \$2995 offer. 523-4485, 623-4106.

FORD

70 MUSTANG 2 dr. exc. trans & tires, runs well \$900. Call 821-5538.

79 FORD LTD station wagon 24,000 mi., excl. buy \$4700. Firm 261-4784.

65 FORD LTD, good running condition, good tires, excl. shape \$750, 923-7224 or 261-1211 ask for James.

67 MUSTANG convertible, excl. new valve job \$2995 offer. 523-4485, 623-4106.

FORD

70 MUSTANG 2 dr. exc. trans & tires, runs well \$900. Call 821-5538.

79 FORD LTD station wagon 24,000 mi., excl. buy \$4700. Firm 261-4784.

65 FORD LTD, good running condition, good tires, excl. shape \$750, 923-7224 or 261-1211 ask for James.

67 MUSTANG convertible, excl. new valve job \$2995 offer. 523-4485, 623-4106.

FORD

70 MUSTANG 2 dr. exc. trans & tires, runs well \$900. Call 821-5538.

79 FORD LTD station wagon 24,000 mi., excl. buy \$4700. Firm 261-4784.

65 FORD LTD, good running condition, good tires, excl. shape \$750, 923-7224 or 261-1211 ask for James.

67 MUSTANG convertible, excl. new valve job \$2995 offer. 523-4485, 623-4106.

FORD

70 MUSTANG 2 dr. exc. trans & tires, runs well \$900. Call 821-5538.

79 FORD LTD station wagon 24,000 mi., excl. buy \$4700. Firm 261-4784.

65 FORD LTD, good running condition, good tires, excl. shape \$750, 923-7224 or 261-1211 ask for James.

67 MUSTANG convertible, excl. new valve job \$2995 offer. 523-4485, 623-4106.

FORD

70 MUSTANG 2 dr. exc. trans & tires, runs well \$900. Call 821-5538.

79 FORD LTD station wagon 24,000 mi., excl. buy \$4700. Firm 261-4784.

65 FORD LTD, good running condition, good tires, excl. shape \$750, 923-7224 or 261-1211 ask for James.

67 MUSTANG convertible, excl. new valve job \$2995 offer. 523-4485, 623-4106.

FORD

70 MUSTANG 2 dr. exc. trans & tires, runs well \$900. Call 821-5538.

79 FORD LTD station wagon 24,000 mi., excl. buy \$4700. Firm 261-4784.

65 FORD LTD, good running condition, good tires, excl. shape \$750, 923-7224 or 261-1211 ask for James.

67 MUSTANG convertible, excl. new valve job \$2995 offer. 523-4485, 623-4106.

FORD

70 MUSTANG 2 dr. exc. trans & tires, runs well \$900. Call 821-5538.

79 FORD LTD station wagon 24,000 mi., excl. buy \$4700. Firm 261-4784.

65 FORD LTD, good running condition, good tires, excl. shape \$750, 923-7224 or 261-1211 ask for James.

67 MUSTANG convertible, excl. new valve job \$2995 offer. 523-4485, 623-4106.

FORD

69 MUSTANG, Fastback 302-4v, p/s, 6/7, magnum 500s, many new parts & extras \$1795 offer. 422-7246.

77 MUSTANG Mach I
4 spd. w/all the flares & scoops. Pretty (BEE127) \$2975
WHOLESALE MOTORS 2999 N. Nimitz Hwy. 836-1222

Overstocked in FORDS

T-Bird, Granada, Fairmont, Mustang, Van, Pickup, LTD. We are reaching for trade-ins. BIG SAVINGS. No reasonable offer refused AT. WHOLESALE MOTORS Ph. 836-1222 2999 N. Nimitz Hwy.

OUR '82 HONDAS ARE IN!

Tony Honda Waipahu 94-081 Farrington Hwy. Call 671-1761. ORDER YOURS TODAY!

WEEKEND SPECIALS

69 PONTIAC FIREHOLD hdp, epc, auto., power steering. (AYG053) Was \$1895 \$1395

73 CHEV CORVETTE, 4 spd., power steering, air cond. (ADU216) Was \$795 \$6495

74 PONTIAC LeMANS, 2 dr. auto., power steering. (AYY980) Was \$1795 \$595

68 PLYMOUTH VALIANT, 4 dr. auto., power steering. (ACV378) Was \$795 \$495

75 CHEV NOVA, 4 dr. auto., power steering. (HAF569) Was \$2195 \$1595

76 VW DASHER station wagon, auto. (HJ3003) Was \$595 \$2595

78 CHEV CAMARO sport epc, 4 spd., power steering/brakes, air cond. (BUG778) Was \$495 \$3995

79 FIAT SPIDER CONVERTIBLE, epc, 5 spd. 13,500 mi., like new. (ARE449) Was \$6595 \$5495

78 FORD FIESTA, 2 dr. 4 spd. (AHT534) Was \$195 \$2395

78 AUDI 5000 4 dr. auto., power steering, air cond., power windows. (ACX049) Was \$6995 \$5895

80 OLDS OMEGA, 1 dr. V6, auto., power steering, air cond. (ANV518) Was \$6295 \$5495

80 MAZDA RX7 GS epc, 5 spd. (HXY079) Was \$9395 \$8295

TOYOTA CITY

Hawaii's Largest Toyota Dealer. MANY, MANY MORE TO CHOOSE FROM. 2310 Kam Hwy., End of Dillingham Blvd. PHONE: 848-1811. A Division of Service Pacific, Inc.

FINAL 1981 CLOSEOUT! PRICE CUT TO THE BONE...

BRAND NEW 1981 PLYMOUTH RELIANT "K" STATION WAGON \$6995 \$499 DOWN & \$166.75 Mo. 60 mos. at \$166.75 Annual percentage rate 18.5%. Deferred price \$10,504. All prices are plus Tax & License. \$12181. All cars subject to prior sale.

Honolulu DATSUN

630 Pihol 531-3721

WAIPAHU AUTO CHEVROLET SALES & SERVICE

Division of Service Pacific, Inc. Mon.-Fri. 8:30-9:00 671-2871 Sat. 8:00-9:00 Prices good from Sun. 10:00-5:00 11/18-11/22

70 MUSTANG

"Mech. Special." AJD003 \$595

74 COLT S/W AYY164 \$895

76 SUBARU S/W BNU343 \$995

75 MALIBU CLASSIC 2 dr. BPV676 \$995

72 CAMARO BRU986 \$1095

73 DUSTER 2 dr. BRD739 \$1095

75 GRANADA 4 dr. AEA512 \$1095

78 MAVERICK 4 dr. BJJ197 \$1395

74 DUSTER 2 dr. BNC732 \$1395

75 PINTO S/W AKW897 \$1695

78 FIAT 128 BFA065 \$2495

74 VW BUS 8 passenger, BFY780 \$2695

70 MUSTANG

"Mech. Special." AJD003 \$595

74 COLT S/W AYY164 \$895

76 SUBARU S/W BNU343 \$995

75 MALIBU CLASSIC 2 dr. BPV676 \$995

72 CAMARO BRU986 \$1095

73 DUSTER 2 dr. BRD739 \$1095

75 GRANADA 4 dr. AEA512 \$1095

78 MAVERICK 4 dr. BJJ197 \$1395

74 DUSTER 2 dr. BNC732 \$1395

75 PINTO S/W AKW897 \$1695

78 FIAT 128 BFA065 \$2495

74 VW BUS 8 passenger, BFY780 \$2695

70 MUSTANG

"Mech. Special." AJD003 \$595

74 COLT S/W AYY164 \$895

76 SUBARU S/W BNU343 \$995

75 MALIBU CLASSIC 2 dr. BPV676 \$995

72 CAMARO BRU986 \$1095

73 DUSTER 2 dr. BRD739 \$1095

75 GRANADA 4 dr. AEA512 \$1095

78 MAVERICK 4 dr. BJJ197 \$1395

74 DUSTER 2 dr. BNC732 \$1395

75 PINTO S/W AKW897 \$1695

78 FIAT 128 BFA065 \$2495

74 VW BUS 8 passenger, BFY780 \$2695

70 MUSTANG

"Mech. Special." AJD003 \$595

74 COLT S/W AYY164 \$895

76 SUBARU S/W BNU343 \$995

75 MALIBU CLASSIC 2 dr. BPV676 \$995

72 CAMARO BRU986 \$1095

73 DUSTER 2 dr. BRD739 \$1095

75 GRANADA 4 dr. AEA512 \$1095

78 MAVERICK 4 dr. BJJ197 \$1395

74 DUSTER 2 dr. BNC732 \$1395

75 PINTO S/W AKW897 \$1695

78 FIAT 128 BFA065 \$2495

74 VW BUS 8 passenger, BFY780 \$2695

70 MUSTANG

"Mech. Special." AJD003 \$595

74 COLT S/W AYY164 \$895

76 SUBARU S/W BNU343 \$995

75 MALIBU CLASSIC 2 dr. BPV676 \$995

72 CAMARO BRU986 \$1095

73 DUSTER 2 dr. BRD739 \$1095

75 GRANADA 4 dr. AEA512 \$1095

78 MAVERICK 4 dr. BJJ197 \$1395

74 DUSTER 2 dr. BNC732 \$1395

75 PINTO S/W AKW897 \$1695

78 FIAT 128 BFA065 \$2495

74 VW BUS 8 passenger, BFY780 \$2695

70 MUSTANG

"Mech. Special." AJD003 \$595

74 COLT S/W AYY164 \$895

76 SUBARU S/W BNU343 \$995

75 MALIBU CLASSIC 2 dr. BPV676 \$995

72 CAMARO BRU986 \$1095

73 DUSTER 2 dr. BRD739 \$1095

75 GRANADA 4 dr. AEA512 \$1095

78 MAVERICK 4 dr. BJJ197 \$1395

74 DUSTER 2 dr. BNC732 \$1395

75 PINTO S/W AKW897 \$1695

78 FIAT 128 BFA065 \$2495

74 VW BUS 8 passenger, BFY780 \$2695

70 MUSTANG

"Mech. Special." AJD003 \$595

74 COLT S/W AYY164 \$895

76 SUBARU S/W BNU343 \$995

75 MALIBU CLASSIC 2 dr. BPV676 \$995

72 CAMARO BRU986 \$1095

73 DUSTER 2 dr. BRD739 \$1095

75 GRANADA 4 dr. AEA512 \$1095

78 MAVERICK 4 dr. BJJ197 \$1395

74 DUSTER 2 dr. BNC732 \$1395

75 PINTO S/W AKW897 \$1695

78 FIAT 128 BFA065 \$2495

74 VW BUS 8 passenger, BFY780 \$2695

FORD

69 MUSTANG, Fastback 302-4v, p/s, 6/7, magnum 500s, many new parts & extras \$1795 offer. 422-7246.

77 MUSTANG Mach I
4 spd. w/all the flares & scoops. Pretty (BEE127) \$2975
WHOLESALE MOTORS 2999 N. Nimitz Hwy. 836-1222

MAZDA	MG	SUBARU	TOYOTA	VOLKSWAGEN	VOLKSWAGEN	VOLKSWAGEN	VOLKSWAGEN
'77 MAZDA 808 S/W Auto., 1741 \$2450 235-0068	'71 MG convertible excellent condition \$2000 call 239-8286 evenings	'79 SUBARU station wagon, excellent condition Bargain \$3900. 254-3846	'76 CELICA GT. auto., air, radio, AM/FM, low miles. \$3200 Call 293-2080 evenings ask for Alan.	'79 VW Convertible, 4 spd. Blue/black top, 30,000 miles. MAX545 UCD301. Ph. 841- 4261	'65 VW squareback, needs some work, or good for parts. \$150. '66 VW BUG \$300 Ph 237-8424 after 6 p.m.	'69 VW Bug, front end smashed, good engine \$850/best offer. 262-8631	'73 VW Super bug, 1982 plates, good cond., \$1800 or best offer Ph 262-4538
'78 MAZDA GLC 4 Spd. 7389 \$2350. 235-0068	OLDSMOBILE 74 OLDS CUTLASS Auto., 7242 \$1500 235-0068	'79 SUBARU, 4 dr. sdn., new paint, 4 spd., KBW892, \$2595. UCD301. Ph. 841-4261	TRIUMPH '76 TR7-Yellow with black stripes and hardtop \$2900 or offer. Call nites 395-4705	'73 VW 412 SEDAN, excl. interior, dependable, \$2000 Ph. 261-4273 or 235-3641. Lindy	'75 VW Rabbit, auto., AM/FM good transportation \$2600/ best offer AFT259, VIP Auto 537-5921	'72 VW CAMPER 4 Spd. / 7396 \$1750 235-0068	'70 VW Station wagon, new paint & body work, engine overhauled, needs tune up. \$1000/offer. Ph. 845-8583
'74 MAZDA RX3, good cond. \$1700. Contact Steve at 257- 2461 or 254-5015 AWH-1	'73 OLDS Cutlass supreme, air, p/s, \$1500 or best offer. Ph. 439-1459	81 TOYOTA Starlet 5 spd. \$4500 or best offer. Call 677- 8070	'68 VW BUG 4 Spd., 7388, \$1850 235-0068	'77 DASHER WAGON Auto., air cond., (ANL 382) \$3775 WHOLESALE MOTORS Ph. 836-1222 2999 N. Nimitz Hwy	CYCLE CITY LTD. Annual Garage Sale Used shop equipment. Used Harley Parts. Used gas tank & fenders. Used tires in good cond. Brand new Harley take off parts. Save up to 80% off on carbs. Exhaust systems \$20 per set. Ruckus rim seat bags. Springs save \$5-100. Stock Harley air cleaners. complete assemblies \$10 ea. New MX1000 from \$10 ea. free mounting. Display T-shirts \$2 ea. Custom Harley T-shirts \$7.95. Sale hours only.	WE PAY MORE! MORE! MORE! FOR CLEAN LATE MODEL CARS, VANS & TRUCKS AT SHELLY PH. 836-0466 CORNER NIMITZ & LAGOON	'78 CADILLAC Coupe DeVille, loaded with luxuries, metal- lic red with red leather. 100% financ- ing avail. A gorgeous motor car. View today! (AYX627) \$5995 '77 TRANS AM T-top, auto., radio, black on black, mags, glass roof. This price is no mistake. SEE NOW! (BBF130) \$2995 '74 PORSCHE 914 2.0 litre, 5 spd., air cond., stereo tape, metallic blue, collec- tor's item. Immac. First Time offered. (BBA685) \$6995 '75 DATSUN B211, 2-dr. sedan, standrad, 4 cyl., clean as a pin. Finest selection of small cars in Hawaii. See today! (AJX889) \$2222
Demonstration Sale '81 626 4 dr. sport sdn., auto., stereo, just proof - more! (M1865) \$6775 * high trade in allowances at Hawaii's Oldest Mazda Dealer WHOLESALE MOTORS 836-1222 2999 N. Nimitz Hwy	PONTIAC '73 PONTIAC LeMans, very good running cond. \$700. Ph. 439-1459	'71 TOYOTA Corona, 4 dr., auto., new radiator/water pump/paint job, \$1200/best offer. Call 262-8631	SEXY*SPORTY*MPG ANY CAR BUT NOT A LEMON CAR LEMON DETECTORS 523-3923 THE USED CAR INSPECTION SERVICE COMPLETE 60 POINT PROF. MECHANIC USED CAREVALUATION Engine • Trans • Exhaust • Steering • Body Rust • Brakes • Accidents • Much More! WE GO ANYWHERE *Protect yourself before you buy with "the service that pays for itself" \$40 SPECIAL WITH THIS AD	'77 DASHER WAGON Auto., air cond., (ANL 382) \$3775 WHOLESALE MOTORS Ph. 836-1222 2999 N. Nimitz Hwy	Save 40% OFF all brand-new 1981 FLH - 80 classics & wide glides. Hurry while they last! Low bank rate financing available Place: Cycle City's driveway Day: Saturday Date: Nov. 21 Time: 9 a.m. - 4 p.m. No earlybirds or pre-sales please Cycle City, Ltd. 2995 N. Nimitz Hwy	ARE YOU DRIVING A TURKEY? '75 VW RABBIT 4 spd., 7355 \$1501 '77 CHEV. S/W Auto., 7261 \$1701 '75 DATSUN 4 spd., 7345 \$1891 '75 TOYOTA COROLLA Auto., 7353 \$1901 '76 DATSUN S/W 4 spd., 7361 \$2201 '77 PLY. VOLARE Auto., 7270 \$2201 '77 MERCURY MONARCH Auto., 7254 \$2301 '77 VW RABBIT 4 spd. 7336 \$2501 '77 BUICK SKYLARK Auto. 7139 \$2501 '78 MERCURY ZEPHYR Auto., 6 cyl., 7279 \$2701 '75 VW BUG 4 spd., 7294 \$2901 '77 TOYOTA CELICA L/B 5 spd., 7334 \$3701 '80 SUZUKI JEEP 4WD, 7337 \$3991 '80 CHEV. CITATION 4 spd., 7350 \$4801 WINDWARD TOYOTA Prices good thru Nov. 24, subject to prior sale. Corner of Kam & Likelike Hwys. PH. 235-0068 OPEN 7 DAYS A WEEK	'78 CADILLAC Coupe DeVille, loaded with luxuries, metal- lic red with red leather. 100% financ- ing avail. A gorgeous motor car. View today! (AYX627) \$5995 '77 TRANS AM T-top, auto., radio, black on black, mags, glass roof. This price is no mistake. SEE NOW! (BBF130) \$2995 '74 PORSCHE 914 2.0 litre, 5 spd., air cond., stereo tape, metallic blue, collec- tor's item. Immac. First Time offered. (BBA685) \$6995 '75 DATSUN B211, 2-dr. sedan, standrad, 4 cyl., clean as a pin. Finest selection of small cars in Hawaii. See today! (AJX889) \$2222
MERCEDES '76 450SE Forest green, w/leather interior. If you are shopping for an excl. buy in a Mercedes sdn., then this is it. (BFS291) \$13,975 WHOLESALE MOTORS Ph. 836-1222 2999 N. Nimitz Hwy	PORSCHE 80 924 Turbo \$18,975 5 spd., silver w/black leather interior air. Grunting 4477 HP street cassette power windows mags. Piston 10 1176 mi. (Like new thruout). Check the price of a new one right here & you will know why this is a buy. (BFS291) \$13,975 The husky Porsche will let the luxury cop. in storage for 2 yrs. (BBS951) Above cars have 80 max 80,000 mi. limited warranty on engine, trans, drive unit, brakes, steering, front suspensions, air cond. - rental & towing. WHOLESALE MOTORS 836-1222 2999 N. Nimitz Hwy	'71 TOYOTA Corona, 4 dr., auto., new radiator/water pump/paint job, \$1200/best offer. Call 262-8631	PUBLIC NOTICE BANK REPOSSESSIONS—OWNER TRANSFERS NO CASH Needed with approved credit Ask about our 18-month or 18,000-mi. warranty '80 DATSUN \$3476.15 8210 4 dr. many extras (BAW597) '78 CHEVY VAN \$4481.93 12 passenger, air (BRB294) '77 CENTURY \$2773.57 2 dr. many extras (HEF561) '76 GRANADA \$1791.16 2 dr. many extras (AP649) ALL CARS STORED AT WHOLESALE MOTORS dba Airport Mazda Trade In Accepted Financing Avail. Ph. 836-1222 ALSO OPEN SUNDAY 2999 N. Nimitz Hwy	Going to OREGON to buy a new car or pickup? — contact — ROBERTS & REDFIELD PORTLAND Write for price lists and full information ANY MAKE - ANY MODEL Delivered - load tested at Portland International Airport ROBERTS & REDFIELD Suite #102 6628 N.E. 82nd Portland, Oregon 97220 (503) 257-0551 Conveniently located just 3 minutes from Airport	'77 DASHER WAGON Auto., air cond., (ANL 382) \$3775 WHOLESALE MOTORS Ph. 836-1222 2999 N. Nimitz Hwy	WE PAY MORE! MORE! MORE! FOR CLEAN LATE MODEL CARS, VANS & TRUCKS AT SHELLY PH. 836-0466 CORNER NIMITZ & LAGOON	'78 CADILLAC Coupe DeVille, loaded with luxuries, metal- lic red with red leather. 100% financ- ing avail. A gorgeous motor car. View today! (AYX627) \$5995 '77 TRANS AM T-top, auto., radio, black on black, mags, glass roof. This price is no mistake. SEE NOW! (BBF130) \$2995 '74 PORSCHE 914 2.0 litre, 5 spd., air cond., stereo tape, metallic blue, collec- tor's item. Immac. First Time offered. (BBA685) \$6995 '75 DATSUN B211, 2-dr. sedan, standrad, 4 cyl., clean as a pin. Finest selection of small cars in Hawaii. See today! (AJX889) \$2222
MERCURY '50 CLASSIC Cougar, runs good, p/s, p/b, auto., radio. Call 261-2337.	SUBARU '70 COUGAR, air, AM/FM, new paint/brakes/battery & more. \$1250/offer. 737-9933	'75 TOYOTA Corona, 5 spd., new paint, clean, \$2795/offer. Ph. 477-6749, 623-7176	WHOLESALE MOTORS 836-1222 2999 N. Nimitz Hwy	'77 DASHER WAGON Auto., air cond., (ANL 382) \$3775 WHOLESALE MOTORS Ph. 836-1222 2999 N. Nimitz Hwy	WE PAY MORE! MORE! MORE! FOR CLEAN LATE MODEL CARS, VANS & TRUCKS AT SHELLY PH. 836-0466 CORNER NIMITZ & LAGOON	'78 CADILLAC Coupe DeVille, loaded with luxuries, metal- lic red with red leather. 100% financ- ing avail. A gorgeous motor car. View today! (AYX627) \$5995 '77 TRANS AM T-top, auto., radio, black on black, mags, glass roof. This price is no mistake. SEE NOW! (BBF130) \$2995 '74 PORSCHE 914 2.0 litre, 5 spd., air cond., stereo tape, metallic blue, collec- tor's item. Immac. First Time offered. (BBA685) \$6995 '75 DATSUN B211, 2-dr. sedan, standrad, 4 cyl., clean as a pin. Finest selection of small cars in Hawaii. See today! (AJX889) \$2222	'78 CADILLAC Coupe DeVille, loaded with luxuries, metal- lic red with red leather. 100% financ- ing avail. A gorgeous motor car. View today! (AYX627) \$5995 '77 TRANS AM T-top, auto., radio, black on black, mags, glass roof. This price is no mistake. SEE NOW! (BBF130) \$2995 '74 PORSCHE 914 2.0 litre, 5 spd., air cond., stereo tape, metallic blue, collec- tor's item. Immac. First Time offered. (BBA685) \$6995 '75 DATSUN B211, 2-dr. sedan, standrad, 4 cyl., clean as a pin. Finest selection of small cars in Hawaii. See today! (AJX889) \$2222

FINAL 1981 CLOSEOUT!
PRICE CUT TO THE BONE....



**BRAND NEW 1981 DATSUN
STD. DIESEL PICKUP**
30 TO CHOOSE FROM
\$5995

\$499 DOWN - \$141/mo.

Honolulu DATSUN
630 Piikoi 531-3721

**THERE'S NEVER
BEEN A
BETTER TIME TO BUY**

'75 MONZA 2 dr., 4 cyl., 4 spd., AM/FM cassette, (Viny) Rally wheels. (BRN791) \$995	'70 OLDS DELTA 88 Good solid transportation! BJF147 \$595	'72 VW 411 4-cyl., excellent gas economy. Excellent running condition. (JAC421) \$895
'74 MERCURY COUGAR Loaded! Black Beauty! (BNC384) \$1695	'78 DATSUN F-10 Fastback, AM/FM 8- track A STEAL! Below wholesale blue book! (BGF908) \$1995	'69 PLYMOUTH FURY III 2-dr., solid transportation 8FW725 \$495
'73 OLDS DELTA 88 ROYALE Low miles loaded to the Max! Excellent condition (BGW163) \$1295	'72 CHEVY MALIBU 2-dr., auto., p/s, AM/FM cassette, rally wheels. Blackout windows RUNS LIKE A TOP! (BCW601) \$995	'69 DODGE DART Custom p/s, auto. SOLID! (AER138) \$795

**WAIPAHU'S
SHELLY MAZDA**
All units subject to prior sale
94-212 Leuku St., Waipahu 677-0761

**ARE YOU
DRIVING A
TURKEY?**

'75 VW RABBIT 4 spd., 7355	\$1501
'77 CHEV. S/W Auto., 7261	\$1701
'75 DATSUN 4 spd., 7345	\$1891
'75 TOYOTA COROLLA Auto., 7353	\$1901
'76 DATSUN S/W 4 spd., 7361	\$2201
'77 PLY. VOLARE Auto., 7270	\$2201
'77 MERCURY MONARCH Auto., 7254	\$2301
'77 VW RABBIT 4 spd. 7336	\$2501
'77 BUICK SKYLARK Auto. 7139	\$2501
'78 MERCURY ZEPHYR Auto., 6 cyl., 7279	\$2701
'75 VW BUG 4 spd., 7294	\$2901
'77 TOYOTA CELICA L/B 5 spd., 7334	\$3701
'80 SUZUKI JEEP 4WD, 7337	\$3991
'80 CHEV. CITATION 4 spd., 7350	\$4801

**WINDWARD
TOYOTA**
Prices good thru Nov. 24, subject to prior sale.
Corner of Kam & Likelike Hwys.
PH. 235-0068 OPEN 7 DAYS A WEEK

**CUTTER FORD
TRANSPORTATION SPECIALS**

'67 MUSTANG Convertible BDC150	\$995
'75 CHEVY Cargo Van 135TBM	\$995
'69 CADILLAC El Dorado HBR323	\$595
'75 PONTIAC Grand Prix Mechanic's special, BRT763	\$1295
'74 CADILLAC Deville 2 dr., BB5946	\$795
'74 CHEVY Custom Pickup 711TBD	\$1895
'76 FORD LTD Station Wagon, BRN585	\$1195
'73 CHEVY Monte Carlo 4XW367	\$295

OPEN VETERANS DAY
Prices Good Nov. 18 to 22, 1981
98-015 Kam Hwy., AIEA * Ph: 487-3811
All cars sold as is. Plus tax & lic.
BANK OF HAWAII/FIRST HAWAIIAN BANK FINANCING
Military Financing Our Specialty

FINAL 1981 CLOSEOUT!
PRICE CUT TO THE BONE....



**BRAND NEW 1981 DATSUN
200 SX HATCHBACK SL**
7 TO CHOOSE FROM
**\$2000
DISCOUNT**
OFF HONOLULU DATSUN'S LIST PRICE.

\$167⁴⁰ MO.
60 mos. at \$167.40

Honolulu DATSUN
630 Piikoi 531-3721

"WHOLESALE" PRICES
"ALL CARS PRICED BELOW "KELLY BLUEBOOK"
SALE ENDS NOV. 23

<p>Cash: \$2595</p> <p>69⁵⁶ a month on approved credit. \$800 down, 18.75% 36 months, \$3304.60 deferred, cash plus tax & license</p> <p>(1) '79 Strada 4 dr., 5 spd., AM, U-377 (2) '78 Volare 4 dr., 6 cyl., AM, air, U-303 (2) '79 Aspen 4 dr. wagon, 8 cyl., air, U-637, U-638 (2) '79 Subaru 4 dr. sdn 4 cyl. KBW892, KBW881 (2) '79 Subaru 4-dr. station wagon. KBW896, KBW895</p>	<p>Cash: \$3795</p> <p>89⁶⁴ a month on approved credit. \$1500 down, 18.75% 36 months, \$4727.04 deferred, cash plus tax & license</p> <p>(1) '79 Zephyr 2 dr., automatic, AM, N-202 (4) '79 Cougar 2 dr. "XR-7", N-163, N-174, N-204 (1) '79 Zephyr 4-dr station wagon, automatic, AX7526</p>
<p>'79 CADILLAC SEVILLE d-elegance model, two tone metallic Burgundy/Silver Burgundy on deep Burgundy, leather seats, panels, full power, AM/FM cassette, air with climate control, wire wheels, 35,000 miles. U-263. "MUST SEE!!!" \$13,300</p>	<p>'79 VW Van \$6495 9 pass., automatic, air., 25,000 miles, BRW241 '79 VW Convertible \$6995 4 spd., AM radio, blue/black, MAX545 '79 CHEV. Nova \$3195 6 cyl. automatic, power steering, AM radio, ATC413</p>

**Open Everyday at
1095 Dillingham Blvd.
FINANCING AVAILABLE**

National Car World, Inc.

**Makai of Honolulu
Community College
WE TAKE TRADES**

Ph: 841-4261

**SHELLY
WILL NOT BE
UNDERSOLD**

'78 CADILLAC
Coupe DeVille, loaded
with luxuries, metal-
lic red with red
leather. 100% financ-
ing avail. A gorgeous
motor car. View
today! (AYX627)
\$5995
'77 TRANS AM
T-top, auto., radio,
black on black, mags,
glass roof. This price
is no mistake. SEE
NOW! (BBF130)
\$2995
'74 PORSCHE
914 2.0 litre, 5 spd.,
air cond., stereo tape,
metallic blue, collec-
tor's item. Immac.
First Time offered.
(BBA685)
\$6995
'75 DATSUN
B211, 2-dr. sedan,
standrad, 4 cyl.,
clean as a pin. Finest
selection of small
cars in Hawaii. See
today! (AJX889)
\$2222

**100%
FINANCING OAC
250 Additional
Cars on Display**

'77 CORVETTE
T-top, auto., air,
mags, trunk rack,
metallic blue with
black interior.
(BPV890)
\$7995
'77 RABBIT
4 dr. auto., 4-cyl.,
metallic brown with
sunroof, meticulously
cared for. This
week's special!
(ACF517)
\$2995
'77 DATSUN
Pickup, 5 spd., radio,
4 cyl., sliding rear
window, mechanical-
ly perfect.
(AAJ307)
\$2995
'78 TOYOTA
COROLLA 4 dr.,
perfect cond., 4 cyl., 4
spd., 100% financ-
ing avail. Must see.
(AES344)
\$2995
'79
BERLINETTA
Hdtp., fully loaded,
power windows, air
cond., charcoal
metallic, mag wheel
covers. Priced for
week sale.
(BBA778)
\$4995
'80 SUBARU
BRAT, 4x4, roll bar,
sliding rear win-
dows, mags, stereo
cassette, fire engine
red, special stripe
package, immac.
(ACV532)
\$4995
FREE SHIPMENT
To OUTER ISLES.

**SHELLY
CARS**
Corner
Nimitz & Lagoon
836-0466
Open 7 & 8 Days a Week

Important News For Smokers:

New Merit Research Released!

New survey results prove MERIT delivers in key areas of taste, ease of switch, and long-term satisfaction.

Rigorous new MERIT research proves it.

MERIT smokers confirm taste a major factor in completing a successful switch from higher tar cigarettes.

MERIT Switch Clicks.

Nationwide survey reveals over 90% of MERIT smokers are glad they switched from higher tar cigarettes. In fact, 94% don't even miss their former brands.

Further Evidence: 9 out of 10 former higher tar smokers report MERIT an easy switch, that they didn't give up taste in switching, and that MERIT is the best-tasting low tar they've ever tried.

2 Of 3 Smokers Prefer MERIT.

In the second part of this study, new tests confirm that MERIT delivers a winning combination of taste and low tar when compared with higher tar leaders.

Confirmed: The overwhelming majority of smokers reported MERIT taste equal to—or better than—leading higher tar brands.

Confirmed: When tar levels were revealed, 2 out of 3 chose the MERIT combination of low tar and good taste.

Year after year, in study after study, MERIT remains unbeaten. The proven taste alternative to higher tar smoking—is MERIT.



MERIT

Kings & 100's

Warning: The Surgeon General Has Determined That Cigarette Smoking Is Dangerous to Your Health.

© Philip Morris Inc. 1981

Reg: 8 mg "tar," 0.6 mg nicotine—Men: 7 mg "tar," 0.5 mg nicotine—100's Reg: 9 mg "tar," 0.7 mg nicotine—100's Men: 10 mg "tar," 0.8 mg nicotine av. per cigarette, FTC Report Mar '81