

# HAWAII MARINE

Voluntary payment for delivery to MCAS housing/\$1 per four week period.

VOL. 10 NO. 45

KANEOHE BAY, HAWAII. NOV. 11, 1981

TWENTY-FOUR PAGES

## Pass in Review

### Hornets log 5,000 hours

WASHINGTON — Since the first flight of the F/A-18 in 1978, the "Hornet" has logged over 5,000 flight operations, averaging 150 hours a month. Fleet operations account for 1,000 of those hours.

The multi-mission strike fighter is in the final stage of development at the Naval Air Test Center, Patuxent River, Md. It is undergoing initial operational testing and evaluation by VX-4 at Point Mugu, Calif., and training under the Fleet Replacement Squadron, Fighter Attack Squadron-125, Naval Air Station, Lemoore, Calif.

Recent flights at the test center have assessed bombing accuracy. Pilots have scored direct hits on their initial attempts. Flight tests of the forward-looking infrared and laser spot tracker/strike camera pods have produced near-photographic quality imagery and highly accurate tracking. VFA-125 has now acquired a fifth F/A-18 with seven Hornets due by the end of this year for training of fleet pilots and maintenance personnel.

"Fleet pilots are very enthusiastic about the performance of the F/A-18 and surprised by the exceptional reliability and ease of maintenance," says Captain J. Partington, VFA-125 Commanding Officer.

Currently, 22 F/A-18s have been delivered, with the Navy and Marine Corps planning to buy a total of 1,366. The Secretary of Defense recently approved production of aircraft for fighter squadrons, and attack production approval is expected in the fall of 1982.

### Recruiter aides needed

HQMC, WASHINGTON — Marines may request up to 30 days temporary additional duty to the recruiting station or substation nearest their hometown to assist the local recruiters, according to Marine Corps Order 1130.62.

Under the Marine Corps Command Recruiting Program, Marines can originate TAD requests and submit them to their commanding officers. They must be permissive orders (no expense to the government).

All Marines, regardless of rank, can participate in the program if authorized by their parent unit. Officers will work with officer selection officers and all enlisted Marines will work with the local recruiter.

Before orders are issued, coordination between the Marine's commander and the commanding officer of the recruiting station requested must be accomplished.

Marines are allowed to take annual leave in connection with permissive TAD orders; and if they already are on annual leave in their hometown, Marines may request permissive TAD from their parent units. However, they must have enough leave remaining to allow time for a reply from the parent unit.

Marines on permanent change of station orders cannot participate in the program.

Marines interested in the program should contact their officer in charge, unit administrative office or see MCO 1130.62.

### Corporal promotions

HQMC, WASHINGTON — Quotas and cutting scores needed for promotion to corporal during November have been released by manpower officials here.

A total of 5,790 promotions have been approved. The number of promotions and cutting scores, by Occupational Fields (OF) are:

OF	QUOTA	SCORE	OF	QUOTA	SCORE	OF	QUOTA	SCORE
01	403	1512	26	35	1473	58	53	1543
02	8	1382	28	81	1370	59	54	1392
03	1099	1536	30	475	1499	60	395	1519
04	22	1450	31	57	1358	61	204	1535
08	356	1498	33	253	1454	63	152	1519
11	200	1488	34	54	1479	64	35	1453
13	275	1541	35	406	1564	65	52	1518
14	10	1331	50	20	1504	68	2	1436
15	4	1384	43	6	1376	70	108	1529
18	234	1454	44	12	1519	72	21	1458
21	53	1443	46	14	1440	73	26	1488
23	54	1462	55	21	1476			
25	535	1551	57	1	1394			

According to officials here, no composite scores for OF 41 were submitted.

### Basic skills education

HQMC, WASHINGTON — According to ALMAR 188/81, Marines identified as deficient in any of the basic skills of reading, mathematics or English may participate in the Basic Skills Education Program to meet military occupational specialty requirements.

Marines who want to enroll in BSEP must ensure that it is directly related to military requirements such as remedial or skill training.

If English is a Marine's second language, and English skills are required in his/her job, English can be taken through BSEP.

The program cannot be conducted to prepare an individual to obtain a high school diploma, according to the ALMAR. Marines participating in the program should enroll in an off-duty high school completion program upon finishing BSEP training.

Guidelines have been set for screening eligible BSEP participants. Requirements include motivation, level of basic skills required for satisfactory performance in a specific MOS, and military classification test scores.

The program is Marine Corps funded and no expenses are charged to individual Marines. For more information, see ALMAR 188/81.

## Meal payment reduces work

TRIPLER ARMY MEDICAL CENTER, Hawaii — Active duty enlisted service members will be paying for their subsistence when they are admitted to Tripler Army Medical Center, according to Department of the Army and Health Services Command officials.

"The procedure, basically, is an accounting procedure," says a TAMC Patient Administration Division spokesperson. "If the service members are currently drawing separate rations when admitted to the hospital they will continue to draw the funds. In the past, these service people would be taken off separate rations upon being admitted to TAMC," said Master Sergeant John Bielawski, Noncommissioned Officer-in-Charge, Patient Administration Division.

He went on to say, "Active duty service members who are not currently drawing separate rations will, upon being admitted to the hospital, be placed on separate rations. When they are

discharged from the hospital, they will be required to pay a subsistence charge at the hospital treasurer's office, Unit B, 1st floor, across from the bank. If a service member is unable to pay the bill at the time of discharge, that individual will be required to sign DD Form 139 authorizing the service member's finance office to

deduct the cost from the next pay check. This is a flat rate and no credit will be given for meals not consumed."

Simply put, the service member's next pay voucher will show where he was given funds for separate rations in block 6.

In another part of the pay voucher, listed under deductions,

it will show where the servicing finance office deducted the amount of the food bill from the service member's stay at TAMC.

"This new procedure doesn't affect retired enlisted or officer personnel," says Bielawski. "It's basically an accounting procedure to reduce some of the paperwork," he said.

## General stresses rifle care

HQMC, WASHINGTON, D.C. (MCNews) — Since all Marines are "basic riflemen," the care and upkeep of rifles and other weapons must be of utmost importance to them.

The Commandant of the Marine Corps, General Robert H. Barrow, has noticed a trend in unsatisfactory care of weapons, including rifle team equipment, and recently addressed the problem in White Letter 8-81.

"This situation is deplorable and is particularly difficult to understand since team shooters are ostensibly the epitome of marksmen, sensitive to the proper use and care of their weapons," said Gen. Barrow.

"The apathy which permits not only the unsatisfactory care of rifle team equipment, but also individual weapons must be corrected," he added.

This problem must be

eliminated, according to the Commandant. "I expect an immediate, Corps-wide concentrated leadership and training effort to eliminate this problem," said Gen. Barrow.

"Further, once corrected, I expect everyone to exert a continuing effort to ensure that there are no similar lapses in Marine-like behavior in the future," concluded the Commandant.



Photo by Roy Thompson

ARE THESE YOUR CHILDREN? — It's not what you see, but what you don't see, that can kill you. These two children wade carelessly through flood waters on the Kaneohe Klipper golf course. The water looks safe but what kind of flood-carried debris lies beneath its placid surface? Children only see fun in the deep water. They often overlook the dangers of flood-covered

ground, or misjudge the swift currents of rain-gorged drainage systems like the major storm drain adjacent Lawrence Road. The rainy season is here, and areas of Oahu have already been flooded. Parents are reminded to watch their children carefully, because any area that is flooded is a potential danger.

## Corps evaluates Israeli mine plows

By GySgt Don Gilbert

QUANTICO, Va. — The Marine Corps has begun testing its own plow — not for farming, but for clearing land mines.

The M-60 Tank-mounted, Track Width Mine Plow was demonstrated Oct. 16 at the Marine Corps Development and Education

Center. In its efforts to improve mine clearing capability for armored units within the Fleet Marine Force, specifically the tank, the Corps is testing and

evaluating two mine plows purchased from the Israeli government.

"We've paid approximately \$74,000 for the two plows," said Major M.G. Foore, Development Project Officer, Mobility and Logistics Division, Development

Center. NOW THAT THE Corps is the owner of

two mine plows, brought through the American Embassy in Tel-Aviv, further testing will have to wait until one simple problem is solved: the technical manual needs to be translated into English — it's now in Hebrew.

Once the technical manual is translated, actual field testing will

begin in late November at the Marine Corps Air Ground Combat Center, Twentynine Palms, Calif.

"We'd like to test the plows for several months during the combined arms exercises at Twentynine Palms," Maj Foore said. "According to the Israelis, the plow is the best method for

clearing mines and is effective against all types of mines.

"THE TRACK lane width of the plow is 38 to 40 inches and the cutting depth is adjustable from 8 to 12 inches." To make a breach lane through a mine field, the tank crew need only drop the plow and proceed ahead," Maj Foore added.

For the demonstration on Oct. 16, a three-man tank crew assembled and mounted the 6000 pound plow in approximately 37 minutes. "With a normal four-man tank crew, it can be done in under 30 minutes," Maj Foore continued.

Although the Corps is testing and evaluating the plow, it is already a fielded item within the Israeli Army. If approved for service use by the Marine Corps, the plow would provide armored units with increased operational capability to breach a mine field during the assault and lessen their dependence on the services of engineer and the infantry to accomplish this mission.



USMC Photo

MINE PLOW — The M-60 Tank-mounted, Track Width Mine Plow turns the earth during a demonstration of its capabilities Oct. 16. Two of the

plows were recently purchased from the Israeli government.



# Former '235 pilot earns aviation award

by LCpl Jose Esparra Jr.

QUANTICO, Va. — Major George P. Sweeney III, was recently named the recipient of the Marine Corps Aviation Association's Robert Guy Robinson Award which is given yearly to the Naval Flight Officer of the Year.

The 37-year-old Radar Intercept Officer was so honored for his exploits with Marine Fighter Attack Squadron-235 for the period July 1, 1980 to June 20, 1981.

Maj Sweeney, now an instructor at the Amphibious Warfare School, served with VMFA-235 for four years. He served his

first three years as the Squadron Maintenance Officer and rounded out his tour there as the Squadron's Executive Officer.

Having joined the Squadron in May 1977, Maj Sweeney participated in the Marine Corps first fixed wings squadron six month unit deployment as his squadron left the palm trees of MCAS, Kaneohe Bay, Hawaii for the far eastern shores of Iwakuni, Japan.

They made a second deployment in March 1979 while Maj Sweeney was still the Maintenance Officer which was then followed by another WestPac

deployment in September 1980. It was during this last deployment that Maj Sweeney distinguished himself as a top-notch NFO worthy of the prestigious MCAA award.

"Major Sweeney's dynamic leadership and flawless coordination of his squadron's staff officers resulted in an outstanding unit deployment by all standards by which a squadron may be judged," read the citation presented to Maj Sweeney at the MCAA Awards Banquet which was held Oct. 10 in Detroit. "His extensive tactical expertise... and his superb performance... set the standards for

squadron crewman to emulate."

During that last deployment, Maj Sweeney ensured that his unit was prepared in all phases to handle and ensure a smooth movement to Japan. To accomplish that, Maj Sweeney conceived, implemented, and supervised a predeployment preparation program that influenced the troops as well as the squadron staff.

When deployed to the Western Pacific, Maj Sweeney and his pilot, Captain James E. Cartwright, logged

the squadron's 10,000th accident free flight hour Nov. 18. Presently, that figure should be well over 13,000 flight hours largely due to the professionalism and dedication of the 15-year Marine veteran.

Four months later on Feb. 22, 1981, Maj Sweeney set another first as he achieved personal milestone of 2,000 flight hours in the F-4 Phantom II aircraft.

Even with the impressive statistics and steadfast manner with which he pursued his duties with the

squadron, Maj Sweeney elects to take minimal credit for his endeavors.

"It's very nice to be recognized," said Maj Sweeney. "But, the people who deserve the credit for the outstanding readiness and safety record are the Marines in the squadron. They deserve this award."

He cited evidence of that in the fact that VMFA-235 also captured two other MCAA awards for the year. They were awarded the prestigious title of Marine Fighter Squadron of the Year while

one of its enlisted men, GySgt J.O. Stephens, received the Electronic Technician of the Year Award.

"VMFA-235 was absolutely the finest group of Marines I've ever been associated with," commented Maj Sweeney. "The enlisted men were dedicated in maintaining the highest qualities of readiness."

"I can't begin to tell you what an honor it was to associate with the caliber of Marines in that squadron. Serving with VMFA-235 has definitely been one of the high points

of my career," Maj Sweeney admitted.

Maj Sweeney first entered the Corps after graduation from the College of St. Thomas in St. Paul, Minn. in 1966. After completing Basic Naval Flight Officer Training and Radar Intercept Officer Training, he reported to MAG-32 for duty with two squadrons — VMFA 312 and VMFA-333.

In July 1969, he joined VMFA-122 at Iwakuni, Japan and shortly thereafter found himself deployed with his unit to Vietnam. While there, he flew 324 combat

missions in the F-4 and was subsequently awarded the Air Medal with numeral 23 and the Navy Commendation Medal with Combat 'V'.

In August 1970, Maj Sweeney was then assigned as an instructor at the Radar Intercept Operator Course at the Naval Air Technical Training Center at NAS, Clynco, Ga. Four years later, he joined VMFA-101 at Yuma, Ariz. where he served as the Assistant Operations Officer until reporting to VMFA-235 in 1977.

## Safety

Residents can remedy dwelling's darkness

When the lights in your home go out, do you immediately call public works to come fix them? If so, you may be in the dark longer than necessary.

OFTEN THE problem occurs from a blown fuse or a tripped circuit breaker. Both problems can easily be remedied by the resident.

Fuses and circuit breakers are safety devices for electrical wiring. They both serve to protect the wiring from overloads, which are caused by electrical appliances in the home using more current than the circuit can handle. Overloads may also result from short circuits, caused by defective appliances or home wiring.

When there is an overload or short circuit on an electrical line protected by a fuse box, the fuse will open

the circuit by melting or blowing out.

IF THE LINE is protected by a circuit box, a circuit breaker opens the circuit by moving into the "trip" position.

Once the problem has been determined as a blown fuse, or a tripped circuit breaker, it is easily fixed. If the home is equipped with a fuse box the fuse need only be replaced. When changing fuses people should ensure the replaced fuse has the correct amperage rating (the strength of an electric current) for the circuit.

With a circuit box the switch should be flipped from the "trip" position to the on position. People should also attempt to determine what appliance is defective or overloading circuit.

TO FIND THE

appliance a person may disconnect all appliances on the circuit and check for frayed or otherwise defective wiring. If a defective appliance cannot be found, residents can check for an overload.


If it is discovered that there is an appliance overload, then the additional appliances should be plugged in on a circuit with a lighter load.

When resetting circuit breakers or replacing fuses persons should make sure the floor is dry.

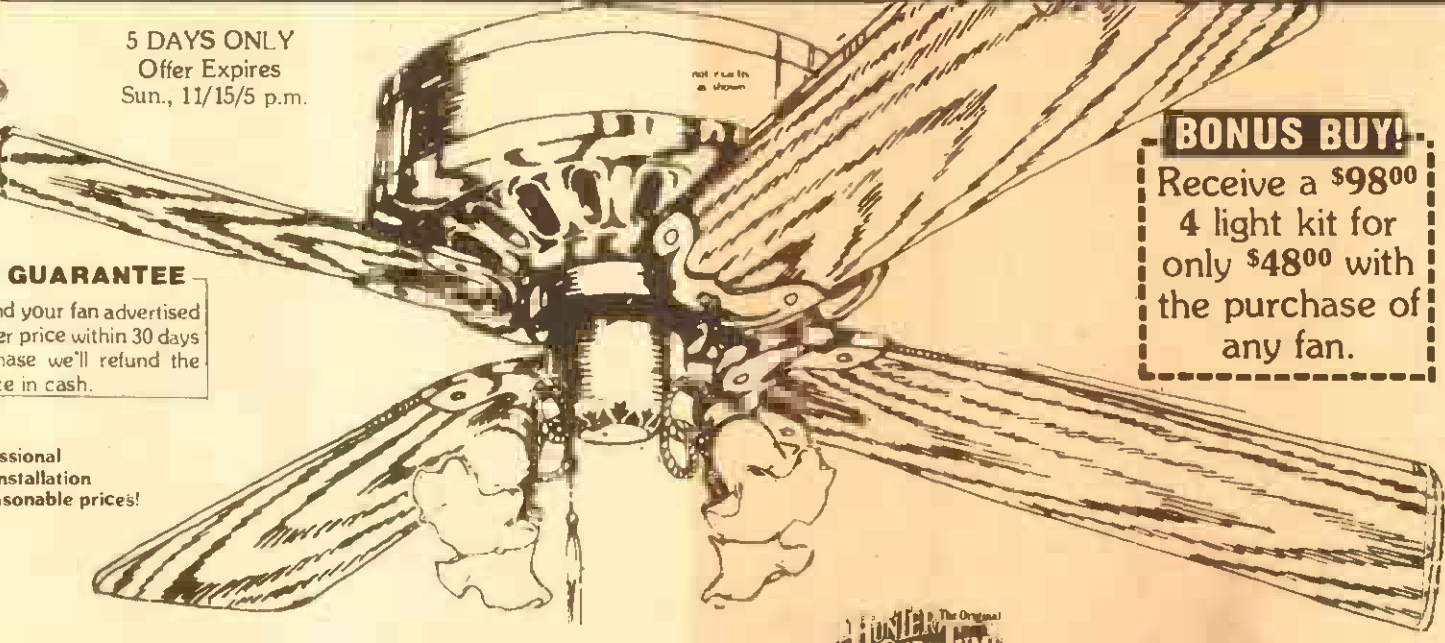
If unsuccessful in determining why the circuit breaker continues to trip or, the fuse to blow, the problem may be defective home wiring. Residents should not attempt to check their wiring. Instead they should call the trouble desk and ask for assistance.

# FAN CLEARANCE

Due to the unexpected low temperatures on the mainland, our Nationwide stores have shipped 500 fans that will be sold at a fraction over cost



5 DAYS ONLY  
Offer Expires  
Sun., 11/15/5 p.m.



**BONUS BUY!**

Receive a \$98<sup>00</sup>  
4 light kit for  
only \$48<sup>00</sup> with  
the purchase of  
any fan.

OUR GUARANTEE

If you find your fan advertised at a lower price within 30 days of purchase we'll refund the difference in cash.

Professional Fan Installation at reasonable prices!

S.M.C.  
Sug. Retail \$129<sup>00</sup>

\$58

Features:  
• 5 Year Warranty  
• Metal Blades  
• Variable Speeds  
• Metal Body

G.A.C. SPECIAL  
Sug. Retail \$189<sup>00</sup>

\$108

Features:  
• 2 Year Warranty  
• Wood Blades  
• Variable Speeds  
• Remote  
• 12" Blades

CASABELLA  
Sug. Retail \$405<sup>00</sup>

\$238

Features:  
• Variable Speeds  
• Energy Efficient  
• 5 Year Warranty  
• Whisper Quiet  
• Wide Selection  
• Sealed Bearings  
• Reverse Air


PACIFIC SURPLUS & DISTRIBUTORS

CALL NOW 262-8131

1247-F Pali Hwy. ( 1 block east of Castle Hospital)  
in the new 7-Eleven Complex in Kailua  
OPEN: Mon.-Sat. 10:00-6:00 Wed. till 8:00 p.m.

**No Other Medium Can Match The Selling Power of Newspapers**

**ADVERTISE IN THE HAWAII MARINE!**



# KDEO

## COUNTRY RADIO

WAIPAHU, HAWAII





**MARINE CORPS APPRECIATION** — Honolulu's Mayor Eileen Anderson expresses her gratitude for the contribution the Marine Corps has made to the community and the nation. A proclamation was signed in her office Thursday which designated Nov. 10 as Marine Corps Day in Honolulu. On hand for the

signing of the proclamation were (left to right) Sergeant Major Raymond Morgan, Fleet Marine Force, Pacific, Sergeant Major, Major Marvin Wilson, Aide-De-Camp to the Commanding General; and Lieutenant General John K. Davis, Commanding General, Fleet Marine Force, Pacific.

Photo by Sgt. Nora Parrish

## At a glance

**Host families**  
The Windward Community/Military Relations Council initiated a holiday Host Family Program in 1979 to give young military members a "place to go" for Thanksgiving and Christmas. Many residents of the Windward Com-

munity have participated by inviting single Marines into their homes each year since the program's inception.

Anyone interested in inviting a single Marine to share a Thanksgiving dinner can make arrange-

ments by calling the Kailua Chamber of Commerce at 261-2727.

**Watering hours**  
To help control the rate of water consumption and to maintain reservoir supplies for fire protection, the following water/irrigation guidelines are

immediately effective:

**Family housing:** 7 to 11:30 a.m. or 3:30 to 5:30 p.m. Thursday and/or Saturday.

**Unaccompanied housing, industrial and administrative areas:** 7:30 to 11:30, Monday and Friday.

Areas irrigated by treated sewage effluent (Golf Course, H-3 entrance, Building 1633); are not restricted.

These guidelines supersede the temporary amendment to the lawn irrigation schedule.

## Courts Martial Report

**EDITOR'S NOTE:** The information contained in *Courts Martial Report* is compiled by the Joint Legal Services Center and is published as a source of information for all Marines.

**Lance Corporal Kirk J. Robasz-kiewicz**, Headquarters and Service Battalion, Camp Smith, was convicted at trial by special court-martial of unlawfully striking another Marine by jumping on him and hitting him on the back of his head and on his head with his fists; and of wrongfully threatening the same Marine.

He was sentenced to five months confinement at hard labor, forfeiture of \$300 pay per month for five months, reduction to private, and a bad conduct discharge from the Marine Corps.

**Lance Corporal Dean A. Hollister**, Headquarters and Service Battalion, Camp Smith, was convicted at trial by special court-martial of unlawfully striking a fellow Marine by grabbing him, shoving him, throwing him, and jumping on top of him.

He was sentenced to two months confinement at hard labor, forfeiture of \$300 pay

per month for four months and reduction to private first class.

**Private First Class Jackie L. Farris**, 1st Battalion, 3rd Marines, was convicted at trial by special court-martial of unauthorized absence from May 18 to 22, 1981; failure to go to his appointed place of duty on May 10, 1981; of twice disobeying the lawful orders of superior non-commissioned officers;

and of twice being disrespectful in language toward superior non-commissioned.

He was sentenced to two months confinement at hard labor, reduction to private, and a bad conduct discharge from the Marine Corps.

**Private John Howard**, Headquarters Company, 3rd Marines, was convicted at trial by special court-martial of unauthor-

ized absence from July 5 to 27, 1981, August 3 to 7, 1981, August 13 to 14, 1981, and Sept. 25 to Oct. 8, 1981; of failing to go to appointed places of duty on Aug. 17 and 18, 1981; and of missing movement through neglect on July 7, 1981.

He was sentenced to five months confinement at hard labor and forfeiture of \$250 pay per month for four months.

**GLASSES OR SOFT LENSES?**  
SUCCESSFUL CONTACT LENS WEAR REQUIRES:

- Properly Fitted Lenses
- High Quality Materials
- Thorough Follow-Up Care By Your Doctor During Adaptation

**SOFT CONTACT LENSES**

**\$105**

EFFECTIVE UNTIL NOVEMBER 30, 1981

Also Available • Soft Contact Lenses for Astigmatism and Continuous Wear • One Day Service for Glasses and Hard Contact Lenses • Immediate Service for Soft Contact Lenses

**ONE YEAR GUARANTEE ON ALL GLASSES**  
COMPLETE PROFESSIONAL VISION SERVICES

**Dr. Charles Dean**  
Optometrist

KAILUA  
139 Hekili St.  
261-9735



## Some states offer military tuition rates

**WASHINGTON (NES)** ... Thirty-nine states now offer lower in-state college tuition rates to service members and their families living in the state but whose legal residence is elsewhere. The following states also place no restrictions on their offer: Arizona, Arkansas, Florida, Georgia, Hawaii, Idaho, Iowa, Kansas, Kentucky, Louisiana, Maine, Minnesota, Mississippi, Missouri, Montana, Nebraska, Nevada, New Hampshire, New Mexico, North Dakota, Ohio, Oklahoma, Oregon, Rhode Island, South Carolina, South Dakota, Tennessee, Texas, Utah, Washing-

ton and Wisconsin.

The states that have restrictions are:

- **Alabama.** Auburn (excluding dependents) and the University of Alabama do not offer in-state tuition rates.

- **Alaska.** Lower in-state rates are provided for part-time students only.

- **California.** Service members receive in-state rates the first year.

- **Connecticut.** In-state rates are not available for non-resident service members living on a military installation.

- **Indiana.** University of Indiana and Indiana State University deny in-state rates

to the spouses of military members; Purdue University offers non-in-state rates.

- **Maryland.** University of Maryland offers in-state rates to full-time service members or their spouses; St. Mary's College and the community college system offer in-state rates to all military families.

- **Michigan.** Only Central Michigan University charges out-of-state rates.

The following states grant only out-of-state

tuition rates: Delaware, Colorado, Massachusetts, New York, Vermont, West Virginia and Wyoming; in this area.

**CREATIVE EXPRESSION**  
3-7 1/2 yrs.  
from CREATIVE THEATER CLASSES  
A Basic Communication Skills Class. ACTIVE FUN  
Waialae, Waipahu, Mililani  
PH. 941-2798, 261-0808, 737-5544  
Acting For Adults Pali Area.

**Orson's QUALITY SEAFOOD**  
Ward Warehouse

**Ski WHISTLER MOUNTAIN, BLACKCOMB, BRITISH COLUMBIA**  
JANUARY 21st-27th, 1982  
• 5 DAYS LIFT PASSES ON TWO MOUNTAINS •  
5 nights in a LUXURY CONDO FIREPLACE JACUZZI  
ONLY \$62500 TOTAL  
Reservations No Later Than Dec. 7th  
**A DAY IN KAUAI**  
December 29th  
Air fare, Waimea Canyon, Waialae River, Cocoa Palms, Buffet Lunch All For Only \$7500  
Special Services  
TRAVEL AND TOUR  
BLOCH ARENA  
422-9444 & 423-1000

**FAMILY CHIROPRACTIC CENTER**  
  
**Dr. Lawrence J. Connors, M.A., D.C. CHIROPRACTIC ... THE NATURAL SOLUTION TO HEALTH PROBLEMS**  
• Headache • Arthritis • Backache • "Pinched Nerve" • Neck Pain • Numbness in Hands or Feet • Shoulder Arm Pain • Bursitis  
**X RAY FACILITIES**  
**WORKER'S COMPENSATION INSURANCE**  
**HEALTH LECTURES**  
1ST & 3RD SAT. 9:30 A.M.  
No Charge For Consultation  
**KANEOHE BUSINESS & PROFESSIONAL CENTER**  
46-006 Kawa St., Suite 201  
235-6877

**Ingenius.**  
  
**DIMENSION 3 MICROWAVE/ CONVECTION OVEN NE-9900**  
3 Different ways to cook quickly, naturally and evenly. PLUS Panasonic's Unique COOK-A-ROUND Magnetic Turntable.  
1. The Convenience of MICROWAVE COOKING  
• Defrost, thaw and cook foods in a flash  
• Cook by Power and Time or by Temperature Probe  
2. The Tasty Appeal of CONVECTION COOKING for Browning and Baking  
• Meats come out tender and evenly browned  
• Breads, pastries, cakes and pies done by constant circulation of dry, heated air.  
3. The Unmatched Speed & Versatility of COMBINATION MICROWAVE/CONVECTION COOKING  
• The best of both worlds ... fast cooking with eye appeal for meats, roasts, pork, lamb or poultry.  
**Panasonic**  
just slightly ahead of our time.  
Available At Your Military Exchange

**PRE-HOLIDAY CARPET SALE**  
  
**Pearl Harbor Navy Exchange CARPET CENTER**  
**Save up to \$8.00 per sq. yd.**  
**Multicolor Cut n' Loop** \$7.50 sq yd  
Sug. retail \$12.95  
**Tone On Tone Sculpture** \$8.00 sq yd  
Sug. retail \$14.95  
**Monsanto's Wear Dated Carpeting**  
**Cut Pile Saxony** \$10.75 sq yd  
Sug. retail \$16.95  
**Multicolor Sculpture** \$11.50 sq yd  
Sug. retail \$17.95  
**Luxurious Ultron Plush** \$13.25 sq yd  
Sug. retail \$21.25  
Carpet only. Padding and installation available.  
Sale starts November 13, 1981  
ends November 22, 1981  
No Layaways.  
Visa and Mastercard accepted  
  
**NAVY Exchange PEARL**  
Phone 422-2768  
422-2767  
This ad was not paid for by the Navy Exchange



# EDITORIAL / OPINION

## Street Scoop

Where would you like to be stationed and why?



**MGySgt Robert Morley, H&MS-24:** "Naval Air Station, South Weymouth, Mass. You can witness the four seasons, all the major sporting events and it's a good area for fishing and hunting. Plus, I plan to retire there."



**PFC Arthur Lopez, 1/12:** "Yuma, Ariz. It's closer to home and my girl."



**1stLt Robert Sellers, 1/3:** "MCRD, San Diego. The recruits coming from basic training are not as good as they could be, and I would like to be near my wife's parents."



**HM3 Michael Coleman, 1/3:** "Texas. Physical therapy school is located there and I would like to get a degree."



**PFC Jose Ortiz, 3/3:** "I would like to be stationed on the East Coast because that would put me closer to my family."



## Messmen battle tedium of duty

by PFC Todd Ramsburg

The alarm goes off before the crack of dawn. Every day it seems like zero four thirty comes earlier and earlier. Unconsciously I search for the alarm clock, knocking over everything within a one-foot radius of it. Silence at last!

I stumble down the long, dark, open squad bay toward the head. As I open the door, I'm overcome by the bright lights and shining white porcelain. I suddenly feel like Dracula at high noon.

My first stop is the mirror, to see if I look as lousy as I feel. I'm not disappointed. It's time for a shower.

**AFTER MY DAILY RITUAL** IN the head, it's back into the pitch black squad bay. My eyes, which have adjusted to the blinding glare of the head, are now thrust back into total darkness.

I proceed to run into anything and everything in my path on the way back to my bunk. Quickly I throw on my cammies and begin playing "Find the Missing Boot Band."

Oh no, zero four fifty-seven. I'm gonna be late!

As I run out the door, I'm still buttoning my cammie coat. One more minute to go, I gotta make it!

I hurry up the steps of Pless Hall just in time for the five o'clock formation. Another day of mess duty begins.

Let's face it, nobody likes mess duty. Take a look at some of the jobs the messmen are asked to perform.

**FIRST OF ALL, THERE IS THE** deck. This job requires very little physical labor and it's probably one of the easiest tasks in the mess hall. But it's extremely boring!

There are only a few different ways you can wipe off a table! Another thing the Marines on the deck must contend

with is public ridicule. There you are, in front of God and everybody, with that cute white hat on your head and a sponge in your hand. It tends to deflate one's ego rather quickly.

Next stop, the scullery. Just by the sound of the word you can guess it's not a pleasant experience. The Marines chosen for this job are distinguished from other messmen by a faint aroma which usually arrives a couple seconds before they do.

**IT'S NOT THEIR FAULT** HOWEVER, it just goes with the job. Their work of course, is washing the dishes. They do the dirty work. If you didn't clean your plate, it's their job to do it for you.

During my two-week "sentence" in the scullery, my fellow "scullerites" and I devised many clever ways to pass the time. Among them, shooting down flies with the power sprayer. A crude, but effective way to combat extreme boredom.

The only thing worse than the scullery is the infamous pot shack. You always wonder who the Marine in the pot shack made angry. The threat of being sent to the pot shack is constantly held over the messmen's head.

But these are only a few of the many tedious jobs that mess duty has to offer. There's always the gally rat, who does nothing but clean up after the cooks; the G.I. men, who do nothing but empty trash cans; the line men, who do nothing but serve the food; and finally the meal card monitors, who simply do nothing.

Although mess duty is unpleasant, it is necessary. Marines must be fed. Imagine giving someone the MOS of "Basic Dishwashing Man." It would be unfair to subject anyone to such cruel and unusual punishment, but just think of the reenlistment bonus!

## Is he just another general?

by Sgt Nora Parrish

**CAMP H.M. SMITH, Hawaii**—As the aircraft pulled in front of the building, the stairs were rolled into place and the red carpet was laid at the foot of them. While people moved into place in the receiving line my anticipation mounted.

**IN A FEW MOMENTS**, a man who many people only see in photographs, would step off the plane right before my eyes. He's a man who has worked hard through the years to obtain the position he now holds; a man whom I have great respect for as a person, a Marine and a general. He's General Robert H. Barrow, Commandant of the Marine Corps.

It wasn't the first time I'd waited for Gen Barrow to arrive, but it was just as exciting since I was waiting this time to

see him as the Corps' senior Marine.

I never thought my excitement at seeing the Commandant was a unique feeling. In fact, I always thought all Marines would be, not only proud to see him, but also a little apprehensive. But as the aircraft taxied to its place Sept. 17, I realized I was wrong.

I made a comment to a Marine who stood next to me about having the opportunity to see the Commandant and, that I felt it was an honor.

I was taken aback by the reply this Marine gave me. In a flippant manner he commented, "He's just another general and I've met and seen lots of them."

**JUST ANOTHER GENERAL!** Wait a minute, he is the Commandant of

the Marine Corps! He is one of two, four-star generals in the corps, and the senior one at that.

As I thought of the remark I felt it similar to the President of the United States arriving and having someone comment, "He's just another civilian and I've met and seen lots of them."

These are our leaders. We've been taught to look up to them, to respect them. Yes, the Commandant is a general but he is not "just another general."

It's hard to explain the feeling of meeting one of the Corps' greatest men, a Marine who reminds me of poster-perfect leathernecks.

He's a man, who one day, people will tell their children, "I served in the Marine Corps when Gen Barrow was Commandant." They will be able to

recall the times he stood up for what he believed was in the Corps' best interest.

**MARINES WHO SAY** they want to meet people like Archibald Henderson or Major General John A. Lejeune, both legends in Marine Corps history, will have the opportunity to say they served in the Corps while a Marine legend was Commandant. A Commandant who's name will stir memories of this man stand tall and proud. Proud of the country, Corps and for what they stand.

I wonder what the Corps will be like 10 or 15 years from now if the young Marine of today become the senior leatherneck of tomorrow who tell the new privates entering the Corps, "The Commandant, big deal he's just another general."

## My Turn

Dear Editor:

Living in the Air Station's Ulupau housing, we have two days a week for trash pickup. Depending on where you live, it's either Monday and Thursday, or

Tuesday and Friday. Yet, every week there is a lot of trash that doesn't get set out.

I put my trash out the night before trash day. Usually I end up putting

everyone's trash out. If I don't, it piles up. I get tired of wading through trash just to get to mine. Half of the time the trash isn't even put in cans, it's just thrown into the room.

I realize a person can forget to set their

trash out occasionally; I have forgotten a few times, too, but not week after week. I have one neighbor that hasn't set his trash out more than 10 times in almost two years, if that often. They don't even put the empty cans back in the room.

The trash men aren't much help either, they just throw the cans down in the street and they roll down the street. Then the kids ride over them on their bikes.

For the people that are guilty of not setting out your own trash, why not do it for a change? It would give everyone else a break from doing your job.

I would prefer my name not be used because I want everyone that doesn't set out their trash to think one of their neighbors complained. Maybe this will help all of us.

Knee Deep

Dear Editor,

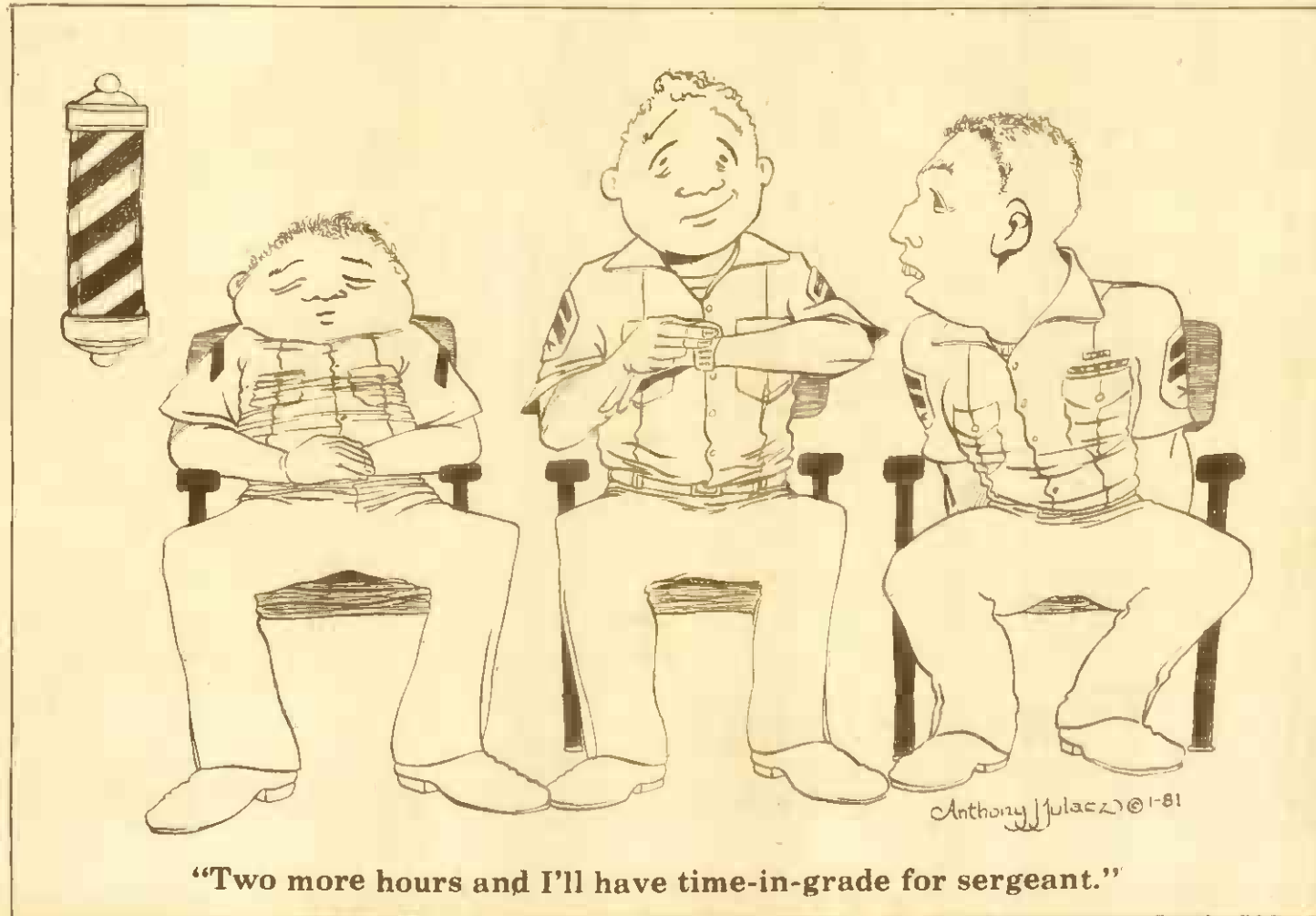
Halloween spirit is one thing but, there were some people who took this "costume" thing way too far.

On payday the Exchange workers were wearing many cute costumes however, I was outrageously shocked to see people at the bank wearing Marine Corps uniforms! Some of these ladies wearing our uniform were also wearing high-heeled dress shoes, flip-flops and sandals.

I emphasize our uniform meaning — we MARINES! We have worked hard and proved ourselves worthy of wearing a Marine Corps uniform.

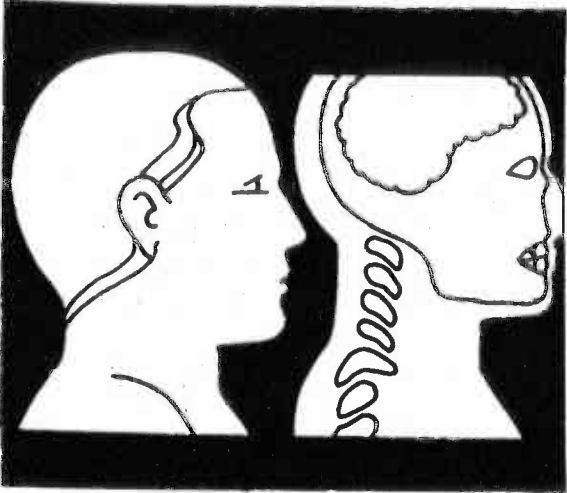
Our Marine Corps uniform is not a "costume" to be worn by everyone and I feel the very least these Ladies could do is to learn the uniform regulations, wear the uniform correctly and with pride as we real Marines do.

A Concerned Sergeant



"Two more hours and I'll have time-in-grade for sergeant."





# Veterans Administration aims studies at retarding the human aging process

Juan Ponce de Leon could not find the fountain of youth though he searched throughout Florida. Poor man. He was ahead of his time and he was using the wrong map.

TODAY'S seeker would do well to set his sights on California and the Wadsworth Veterans Administration Medical Center

where Dr. Takashi Makinodan's work in immunology and aging is taking place.

As Wadsworth's director of the Geriatric Research Education and Clinical Center, Makinodan is a leader among those explaining the process of aging and finding ways to retard its progress. The affable scientist says, "The VA's the place to be. It

is a pacesetter in geriatric research."

WHILE HE HAS not yet found the fountain of youth, Dr. Makinodan is close enough to hear its splash. In fact, no longer are his test tubes filled with animal cells. Now it is human blood cells he is studying, the first step toward seeing if his successful exper-

iments with laboratory mice will be of benefit to mankind.

The aim of his research Dr. Makinodan says, is not to extend life as such, but to extend one's productive life — to make the middle years better, longer. Otherwise, he says, we will continue to fill nursing homes as the body's immune system breaks down.

The immune system

is composed of a network of organs throughout the body, including the bone marrow, thymus, spleen, and white blood cells.

WHILE working at the Oak Ridge National Laboratory in Tennessee, Makinodan became intrigued with aging.

"I was dealing with radiation and its

immediate effects on humans. That led to thinking about long term effects, which made me realize very little was known about the aging process," he says, adding, "so, I decided to look into it."

AS TO THE future Dr. Makinodan will focus on the underlying bases for infectious diseases and how to increase immunity

**the law center**  
of michael pence  
emphasis **divorce**  
**bankruptcy & adoption**  
century center 1750 kalakaua ave. suite 1308  
**955-4496**

**SUZUKI STATE WIDE CLEARANCE!**  
**LO-RIDERS AT HI-VALUE**

In Kaneohe  
46-144 Kahului  
235-3300

Downtown  
818 Iwilei Rd.  
536-7023

**A DIVISION OF MONTGOMERY MOTORS**

Even though you already have a government retirement plan

# You can also have a Bankoh Individual Retirement Account.

Contribute up to \$2,000 annually. Even though you already have a government retirement plan, you may be able to contribute up to \$2,000 annually to a Bankoh Individual Retirement Account (IRA) starting January 4, 1982.

**Enjoy tax benefits.** You may deduct your annual contribution from each year's taxable income. And you don't pay taxes on the contributions or interest earned until you make withdrawals at retirement—when the rate at which you're taxed may be lower.

**Earn money market interest rates.** Bankoh IRAs pay rates equal to those available on 2½-year U.S. Treasury Notes for contributions with maturities of 3 years. (For maturities of 6 years, the interest rate is currently lower.)

No one can predict future interest rates, but here are some examples: Suppose you're 35 years old and you contribute \$2,000 on January 4 each year until you reach age 60. Based on the following annual interest rates, you could accumulate:

Annual Interest Rate	10%	12%	14%
Amount You Could Accumulate Over 25 Years	\$216,363	\$298,668	\$414,665

**Bankoh Automatic Transfer makes it easy.** You can have periodic contributions made automatically from your Bankoh Checking or Savings account with Automatic Transfer. Nothing could be easier!

**You can sign up now.** Just fill out and return the coupon or phone 537-8266 with any questions. We'll get all the paperwork taken care of. Then, when January 4 rolls around, you can start making your contributions.

Substantial interest penalty for early withdrawal. Individual Retirement Accounts continue to be subject to all Internal Revenue Service laws and regulations.

**FIND OUT HOW.**

Yes, I want to know more about your new Bankoh Individual Retirement Account. Please contact me.

NAME \_\_\_\_\_

ADDRESS \_\_\_\_\_

CITY \_\_\_\_\_ ZIP \_\_\_\_\_

BUSINESS PHONE \_\_\_\_\_ HOME \_\_\_\_\_

Mail to: Bank of Hawaii Bankoh Retirement Plans  
P.O. Box 2900, Honolulu, Hawaii 96846

HM 11/11

**h Bank of Hawaii**  
We've got winning ways.

**CONSOLIDATED THEATRES**

**KAM D.I. "SUPER" SWAP MEET**  
EVERY WED. - THURS. - SAT. & SUN.  
7:00 AM to 3:00 PM  
Opp. Pearlridge Cntr • Ph. 847-1965 or 488-5822

**WAIKIKI**

**WAIKIKI #1**  
Seaside nr. Kalakaua 923-2394  
MERYL STREEP  
"FRENCH LIEUTENANTS WOMAN" (R)  
12:45 • 3:00  
5:30 • 8:00 & 10:30 PM

**WAIKIKI #2**  
KEITH CARRADINE  
"SOUTHERN COMFORT" (R)  
12:30 • 2:30 • 4:30  
8:30 • 8:45 & 10:45 PM

**WAIKIKI #3**  
Kalakaua nr. Seaside 923-5353  
JAMIE LEE CURTIS  
DONALD PLEASANCE  
"HALL HENRI" (R)  
12:30 • 2:30 • 4:30  
8:30 • 8:30 & 10:30 PM

**KUHIO #1**  
2095 Kuhio 941-4422  
STARTS FRIDAY!  
Sissy Spacek  
"RAGGEDY MAN" (PG)  
Call Theatre For Show Times

**KUHIO #2**  
DUDLEY MOORE  
"ARTHUR" (PG)  
TONIGHT!  
8:45 • 8:45 & 10:45 PM

**KAPOLANI**  
1645 Kapiolani 955-5115  
STARTS TONIGHT!  
JACQUELINE BISHOP  
"RICH AND FAMOUS" (R)  
Call Theatre For Show Times

**MAKIKI**

**ASIAN CINEMA #1**  
Beretania at Keweenaw 944-9644  
STARTS TONIGHT!  
"DICK TRACY"  
WANTED DEAD OR ALIVE  
"SHADOW OF SEVEN"  
Call Theatre For Show Times

**ASIAN CINEMA #2**  
STARTS TONIGHT!  
"TORABAN"  
GOOD BARRIBAN  
"SPEED LIMIT 0"  
Call Theatre For Show Times

**UNIVERSITY • PEARL**

**VARSITY**  
University nr. Beretania 946-4144  
"GALIN"  
TONIGHT!  
8:20 • 8:20 & 10:20 PM

**CINERAMA**  
King nr. Kalakaua 941-5291  
JACQUELINE BISHOP  
"RICH AND FAMOUS" (R)  
TONIGHT!  
8:45 • 8:45 & 10:45 PM

**DOWNTOWN**

**HAWAII**  
1130 Bethel 536-6300  
FRIDAY-SUNDAY  
"WILL SQUAD" (R)  
"DEAD Y STRIKE" (R)  
Call Theatre For Show Times

**TOYO**  
1230 College Walk/Purple Film 538-1654  
ALBA MORENO  
ELIZABETH OROPEZA  
"SI MACAMBA"  
SI MALAKAS  
AT SI MAHININ  
Call Theatre For Show Times

**LIBERTY**  
1179 Nuuanu 537-1686  
STARTS TOMORROW  
"KURO FU KILLER IN PARIS"  
"18 CLAWS OF SHAGOL"  
Call Theatre For Show Times

**AIEA • PEARL CITY**

**KAM D.I. #1**  
Moanalua nr. Kam Hwy. 488-3835  
MOVED OVER!  
"HALLOWEEN II"  
"GRADUATION DAY" (R)  
GATES OPEN AT 5:45 PM  
SHOW STARTS AT 8:30 PM

**KAM D.I. #2**  
STARTS TONIGHT!  
"SHARK FISH FIGHTER" (R)  
"MASTER OF THE FLYING GUILLOTINE" (R)  
GATES OPEN AT 5:45 PM  
SHOW STARTS AT 8:30 PM

**PEARLRIDGE 1**  
Pearlridge Center 487-5581  
"LOOKER" (PG)  
"GALLERY OF TERROR" (R)  
Call Theatre For Show Times

**PEARLRIDGE 2**  
MOVED OVER!  
ON ANY SUNDAY!  
Call Theatre For Show Times

**PEARLRIDGE 3**  
JOHN REYES  
BLAIR BROWN  
"CONTINENTAL DIVIDE" (PG)  
TONIGHT!  
8:00 • 8:00 & 10:00 PM

**PEARLRIDGE 4**  
HEAVY METAL (R)  
TONIGHT!  
8:45 • 8:45 & 10:30 PM

**KAILUA D.I.**  
917 Pal Highway 261-6032  
STARTS FRIDAY!  
"CHECK AND CHARGE"  
"CHECK AND CHARGE"  
NEXT MOVIE (R)  
"UP IN SMOKE" (R)  
GATES OPEN AT 5:30 PM  
SHOW STARTS AT 8:30 PM

**AIKAI**  
Aikahi Park Shopping Center 254-1330  
STARTS FRIDAY!  
"BODY HEAT" (R)  
"PRIVATE BENJAMIN" (R)  
Call Theatre For Show Times





USMC photo

These three C-117 Skytrains which are operational are among six the Operational Maintenance Division, MCAS Iwakuni has aboard. The three Skytrains that are not operational are used for

salvage to keep the others in flying condition. The only remaining Marine Corps C-117s still log their fair share of flight hours as they have for more than 30 years.

## Skytrains still haul their weight

# Airplanes carry more than cargo

by Cpl Steve Williams

MCAS IWAKUNI, Japan — They aren't fast, fancy, or ultra-modern in design and there aren't many of them left, but they have a past, a long and rich past, and after more than 30 years the Marine Corps' remaining C-117D Skytrains still log their fair share of flight hours here.

Korea and Vietnam. Some of them still have the bullet holes to prove their venerable service records.

"There's not another aircraft like them," said Master Sergeant D.M. Milhoan, a long-standing admirer of the C-117s and an aircrew member since 1962.

TOGETHER the planes fly up to 80 to 100 hours per month making many logistics runs to Korea, Okinawa and the Philippines. The planes are flying much the same now as they did in

According to MSgt Milhoan, Skytrains have dropped flares for combat support, dropped parachutists, hauled troops and cargo, been equipped for medical evacuations, been used for aerial reconnaissance

and even been modified for special cold weather assignments by adding skis.

BUT SKYTRAINS to the crews at least, also carry memories. Just ask MSgt Milhoan. "C-117s are slow and low flying. They fly through the weather instead of above it. Thunderstorms can get a little bumpy," he said with a smile.

Lance Corporal Don Moon, first mechanic, said, "We were at Misawa Air Base in northern Japan one time when a prop governor suddenly wouldn't work — we

had to fix it so we could leave — so we were out there in the roaring wind and snow. The good times are really good, but the bad times, well . . ."

Crew Chief, Sergeant Mike Philibert explained, "People think that the C-117s are down a lot, but that's not true. It's just that when we are down it's complicated because parts are hard to come by. And there aren't new parts anyway, except for the parts that you have specially made. All parts are off other aircraft.

RECENTLY, three C-117s were retired

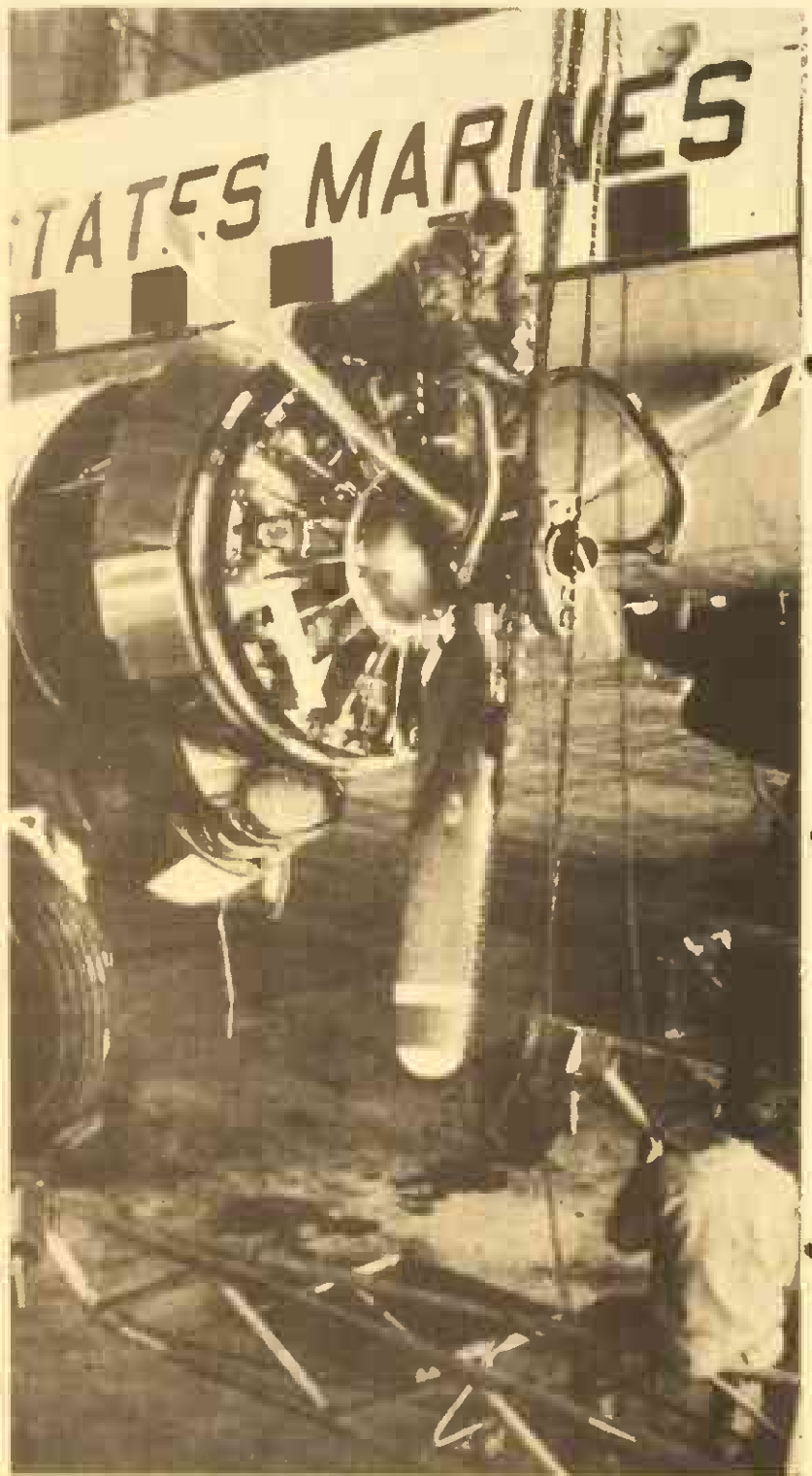
from active service, making spare parts from those aircraft available to the H&HS Operational Maintenance Division. Currently there are three C-117s operational here.

However, flying C-117s "Isn't just kicking the tires and going," according to Crew Chief, Staff Sergeant M.D. Scott. With four to six crew members, 20 passengers and cargo, the plane must be balanced precisely so that it will maintain a 50 foot per minute rate of climb with just one engine. To do so takes experienced figuring by the crew chief, and

is only one part of the two or more hours of pre-flight checks to be performed before each flight.

Speaking of the many hours the aircrews work each week and the ingenuity taken to make parts on the spot he added, "It's enjoyable, but you've got to love to fly."

FOR THE C-117 Skytrains flying, under all types of conditions and purposes, has been their mission for more than 30 years. They aren't fast, fancy or modern in design, but they are still flying.



USMC Photo

REPAIRS — Sergeant Melvin Urbanski (on the engine) and Staff Sergeant M.D. Scott prepare to remove a prop from one of three operational C-117D Skytrains remaining in the Marine Corps, based at MCAS Iwakuni, Japan. The Skytrains have more than 30 years of venerable service logged on the books.

To move... or not to move?

see your Career Planner... he can do you some good.

## PRE-CHRISTMAS SPECIAL

# THE "ULTIMATE"

SALE \$595<sup>00</sup>  
WHILE SUPPLY LASTS

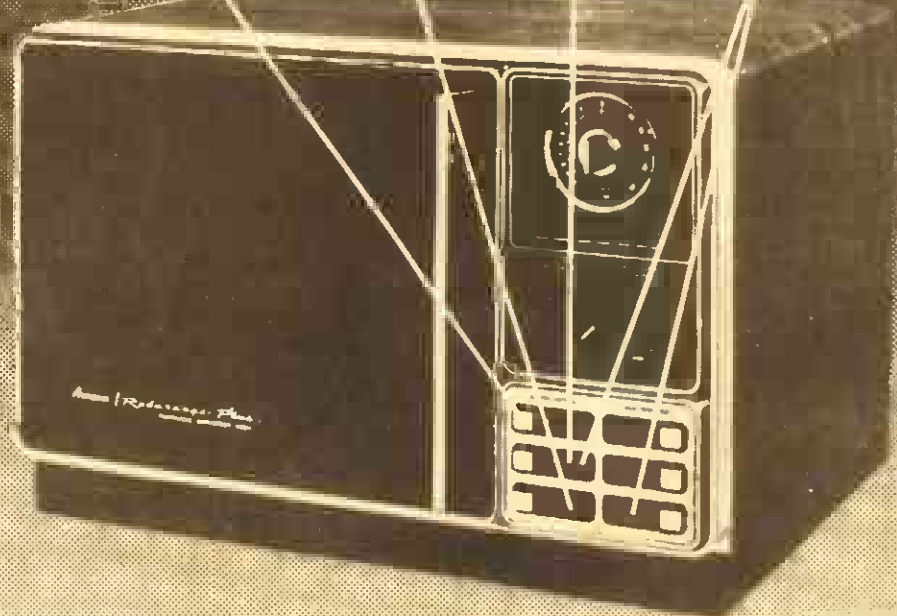
Press the first button  
IT'S A MICROWAVE OVEN.  
Save 75% of normal cooking time. Dramatically reducing electrical bills.

Press a second button  
IT'S A CONVECTION OVEN.  
Browns, bakes, crisps in half the time.

Press a third button  
IT'S A COMBINED MICROWAVE CONVECTION OVEN.  
Fantastic for speed, browning, crisping, and cooking food moist and tender.

Press the fourth and fifth buttons  
IT'S A DEHYDRATION OVEN.  
Dehydrates and preserves vegetables, meats, fruits, and fish, without additive.

IT'S UNBELIEVABLY EASY TO USE!



Model RMC-20

Limited supply

Amana Radarange Plus.  
Exclusive AMANA  
MICROWAVE—CONVECTION—DEHYDRATION—PORTABLE OVEN

NOW  
At Your Marine Exchange

# Wailuna



Above.. and beyond the call of duty.

The hilltop community of Wailuna has a special financing opportunity for service families stationed in Hawaii for the next three years. Now it is easier than ever to own a two- or three-bedroom leasehold townhome on the quiet, cool slopes above Pearlridge. You'll enjoy swimming, tennis, a wilderness park, tot-lot and more. Especially the financing.

3-year mortgage note with a renegotiable rate — Wailuna will reduce the rate to 12½% A.P.R. for the first three years.

Visit our model townhomes this weekend for complete details.

Townhomes affordably priced from \$111,000 to \$141,000

Take Exit 10 from H-1 to Waimalu and travel to the very top of Kaahumanu Street.

Sales pavilion open daily Noon to 5 p.m.

Telephone: 455-9093

Principal Broker: Paula Withrow





ATLAS

Name \_\_\_\_\_  
Address \_\_\_\_\_  
Phone \_\_\_\_\_  
Entries accepted Nov. 11-Nov. 21  
One entry per family per store.

Name \_\_\_\_\_  
Address \_\_\_\_\_  
Phone \_\_\_\_\_  
Entries accepted Nov. 11-Nov. 21  
One entry per family per store.

Name \_\_\_\_\_  
Address \_\_\_\_\_  
Phone \_\_\_\_\_  
Entries accepted Nov. 11-Nov. 21  
One entry per family per store.

Name \_\_\_\_\_  
Address \_\_\_\_\_  
Phone \_\_\_\_\_  
Entries accepted Nov. 11-Nov. 21  
One entry per family per store.

HAWAIIAN TRAVEL  
AGENCY

Name \_\_\_\_\_  
Address \_\_\_\_\_  
Phone \_\_\_\_\_  
Entries accepted Nov. 11-Nov. 21  
One entry per family per store.

Name \_\_\_\_\_  
Address \_\_\_\_\_  
Phone \_\_\_\_\_  
Entries accepted Nov. 11-Nov. 21  
One entry per family per store.

Name \_\_\_\_\_  
Address \_\_\_\_\_  
Phone \_\_\_\_\_  
Entries accepted Nov. 11-Nov. 21  
One entry per family per store.

Name \_\_\_\_\_  
Address \_\_\_\_\_  
Phone \_\_\_\_\_  
Entries accepted Nov. 11-Nov. 21  
One entry per family per store.

BASKIN-ROBBINS  
ICE CREAM

Name \_\_\_\_\_  
Address \_\_\_\_\_  
Phone \_\_\_\_\_  
Entries accepted Nov. 11-Nov. 21  
One entry per family per store.

Name \_\_\_\_\_  
Address \_\_\_\_\_  
Phone \_\_\_\_\_  
Entries accepted Nov. 11-Nov. 21  
One entry per family per store.

Name \_\_\_\_\_  
Address \_\_\_\_\_  
Phone \_\_\_\_\_  
Entries accepted Nov. 11-Nov. 21  
One entry per family per store.

Name \_\_\_\_\_  
Address \_\_\_\_\_  
Phone \_\_\_\_\_  
Entries accepted Nov. 11-Nov. 21  
One entry per family per store.

SANDY'S BAKERY

Name \_\_\_\_\_  
Address \_\_\_\_\_  
Phone \_\_\_\_\_  
Entries accepted Nov. 11-Nov. 21  
One entry per family per store.

**Windward  
City  
Shopping  
Center**

**Give Away**

**Nov. 11-Nov. 21**

Deposit entry blanks at each of the participating Windward City stores for your chance to win a Thanksgiving turkey. There is no limit to the number of Turkey Drawings that you may win! One entry per family per store, please.

\*Windward City merchants and their families are not eligible.  
\*Need not be present to win.

Name \_\_\_\_\_  
Address \_\_\_\_\_  
Phone \_\_\_\_\_  
Entries accepted Nov. 11-Nov. 21  
One entry per family per store.

ASSOCIATES FINANCIAL  
SERVICES

Name \_\_\_\_\_  
Address \_\_\_\_\_  
Phone \_\_\_\_\_  
Entries accepted Nov. 11-Nov. 21  
One entry per family per store.

Name \_\_\_\_\_  
Address \_\_\_\_\_  
Phone \_\_\_\_\_  
Entries accepted Nov. 11-Nov. 21  
One entry per family per store.

TIKI TOPS

Name \_\_\_\_\_  
Address \_\_\_\_\_  
Phone \_\_\_\_\_  
Entries accepted Nov. 11-Nov. 21  
One entry per family per store.

PARADISE SUN 'N SURF

Name \_\_\_\_\_  
Address \_\_\_\_\_  
Phone \_\_\_\_\_  
Entries accepted Nov. 11-Nov. 21  
One entry per family per store.

Name \_\_\_\_\_  
Address \_\_\_\_\_  
Phone \_\_\_\_\_  
Entries accepted Nov. 11-Nov. 21  
One entry per family per store.

Name \_\_\_\_\_  
Address \_\_\_\_\_  
Phone \_\_\_\_\_  
Entries accepted Nov. 11-Nov. 21  
One entry per family per store.

WINDWARD BOWL

Name \_\_\_\_\_  
Address \_\_\_\_\_  
Phone \_\_\_\_\_  
Entries accepted Nov. 11-Nov. 21  
One entry per family per store.

WINDWARD SHOE REPAIR

Name \_\_\_\_\_  
Address \_\_\_\_\_  
Phone \_\_\_\_\_  
Entries accepted Nov. 11-Nov. 21  
One entry per family per store.

FIRST CHEVRON II

Name \_\_\_\_\_  
Address \_\_\_\_\_  
Phone \_\_\_\_\_  
Entries accepted Nov. 11-Nov. 21  
One entry per family per store.

TOWN PUMP

Name \_\_\_\_\_  
Address \_\_\_\_\_  
Phone \_\_\_\_\_  
Entries accepted Nov. 11-Nov. 21  
One entry per family per store.



KOOLAU PETS

Name \_\_\_\_\_  
Address \_\_\_\_\_  
Phone \_\_\_\_\_  
Entries accepted Nov. 11-Nov. 21  
One entry per family per store.

WINDWARD TWIN  
THEATERS

Name \_\_\_\_\_  
Address \_\_\_\_\_  
Phone \_\_\_\_\_  
Entries accepted Nov. 11-Nov. 21  
One entry per family per store.

CIT FINANCIAL SERVICES

Name \_\_\_\_\_  
Address \_\_\_\_\_  
Phone \_\_\_\_\_  
Entries accepted Nov. 11-Nov. 21  
One entry per family per store.



# Localmotion

**K-BAY OFFICERS' CLUB**  
**TODAY** — Veterans Day — Club closed.  
**THURSDAY** — Lunch in the Pacific Room from 11 a.m. till 1 p.m. Beefsteak a la mode from 6 till 8:30 p.m. features steamship round, a seafood item, rice or potatoes, vegetable and a salad bar.

**FRIDAY** — Lunch in the Pacific Room from 11 a.m. till 1 p.m. Happy Hour in the Tapa Bar from 4:30 till 6:30 p.m. Mongolian barbecue and steak out on the Lower Lanai from 6 till 9 p.m. "Illinois" plays in the Tapa Bar from 8:30 p.m. till 12:30 a.m.  
**SATURDAY** — King crab and hotel round of beef with salad bar, rice, potatoes, vegetable, rolls, coffee and iced tea.

**SUNDAY** — Champagne brunch in the Pacific Room from 10 a.m. till 1 p.m. with a mini buffet and a complimentary glass of champagne. In the evening, prime rib buffet with all the trimmings. Children's special - \$3.25.

**MONDAY** — Lunch in the Pacific Room from 11 a.m. till 1 p.m. Join us Monday through Friday for lunch specials, hot carved sandwiches, soup and salads. Monday evening, the dining room is closed. During football season, the Tapa Bar will open from 4 till 8 p.m. Halftime prices will mean half off on all drinks.

**TUESDAY** — Lunch in the Pacific Room from 11 a.m. till 1 p.m. Tuesday evening the dining room is closed. The Tapa Bar opens from 4 till 10 p.m. Happy Hour from 4:30 till 6:30 p.m. Chili and pupus are available at the bar.

**STAFF NCO CLUB**  
**TODAY** — Bar services only from 11 a.m. till 11 p.m.  
**THURSDAY** — Luncheon special is veal parmesan. Mongolian barbecue is served from 5:30 till 8:30 p.m. "Crystal Rose" entertains from 7:30 till 10:30 p.m.  
**FRIDAY** — Luncheon special is fish and chips. Aloha Happy Hour is from 4 till 6 p.m. Candlelight dining featuring peel and eat shrimp is served from 6 till 9 p.m. "Horizon" plays from 9 p.m. till 1 a.m.

**SATURDAY** — Prime rib and crab is served from 6 till 9 p.m. "Lukes Pineapple Store" plays from 9 p.m. till 1 a.m.  
**SUNDAY** — Buffet brunch is served from 10 a.m. till 1 p.m. Cook your own steak over a charcoal grill from 4 till 7 p.m.

**MONDAY** — Luncheon special is Mexican plate. Happy Hour is from 5 till 6 p.m.  
**TUESDAY** — Luncheon special is barbecue beef. Happy Hour is from 5 till 6 p.m.

**WINDWARD ENLISTED CLUB**  
**TODAY** — Lunch from 11 a.m. till 1 p.m. Dining room opens from 5 till 8 p.m.  
**THURSDAY** — Lunch from 11 a.m. till 1 p.m. Dining room opens from 5 till 8 p.m. "Country Lane" plays in the Moongate Lounge from 7:30 till 11:30 p.m.

**FRIDAY** — Lunch from 11 a.m. till 1 p.m. Dining room opens from 5 till 9 p.m. with a prime rib special and prime rib and crab special. "TBA" band plays in the Ballroom from 8:30 till 12:30 p.m.

**SATURDAY** — Dining room opens from 5 till 9 p.m. with a prime rib special and prime rib and crab special. "Master" plays in the Ballroom from 8:30 till 12:30 a.m.

**SUNDAY** — Club opens at 11 a.m. Dining room opens from 2 till 8 p.m.

**MONDAY** — Lunch from 11 a.m. till 1 p.m. Dining room opens from 5 till 8 p.m. with Italiano Nite, all the spaghetti you can eat for \$3.50. Monday Night Football with free popcorn and Happy Hour prices from 6:30 till 8:30 p.m.

**TUESDAY** — Lunch from 11 a.m. till 1 p.m. Dining room opens from 5 till 8 p.m. with all you can eat smorgasbord in the "Breezy Inn."

# Cinema

	W	Th	F	S	S	M	T
MCAS Theater	1	2	3	4	5	6	7
Camp Smith Theater	3	7	8	9	10	11	12

1. **DEADLINE** — Barry Newman, Bill Kerr, R, drama.

2. **THE LEGEND OF THE LONE RANGER** — Klinton Spilsbury, Michael Horse, PG, western drama.

3. **THE GREAT MUPPET CAPER** — Charles Grodin, Diana Rigg, G, adventure.

4. **THE CHANGELING** — George C. Scott, Trish Van Devere, R, horror suspense.

5. **RACQUET** — Bert Convy, Lynda Day George, R, comedy.

6. **HOW TO BEAT THE HIGH COST OF LIVING** — Jane Curtin, Jessica Lange, PG, comedy drama.

7. **HAPPY BIRTHDAY TO ME** — Melissa Sue Anderson, Glenn Ford, R, horror drama.

8. **NOBODY'S PERFECT** — Gabe Kaplan, Alex Karras, PG, comedy.

9. **THE ONLY WAY HOME** — Bo Hopkins, Beth Brickell, PG, drama.

10. **DYNAMO** — Bruce Lee, R, action drama.

11. **SEPARATE WAYS** — Karen Black, Tony Lo Bianco, R, drama.

## Stay Marine.

MAINLINER and TRAVEL HOLIDAY Award Winners

### L'Auberge

French Cuisine

Superb Dining In A Charming Country French Manner

RESERVATIONS AFTER 2 P.M.

262-4835

Open: Wed. thru Sun. 6 p.m. to 10 p.m.

117 HEKILI STREET, KAILUA

Your Hosts - Marcel & Elvi Baltzer

**MAINLAND \$295 ROUND TRIP!**  
Christmas & New Years on the mainland for as little as \$295, East Coast \$395.  
You can't afford not to call!  
**HAWAIIAN PATHFINDERS**  
487-0056

**GET OUT OF DEBT**

through Chapter 13  
A federal law which helps to pay off your debts without borrowing and in payments you can afford, stops creditor harassment and law suits, protects your job, co-signers and property. Information packet without obligation.  
Please call:

**HOWARD Y. TANAKA**  
Attorney versed in Chapter 13 filings  
Suite 703, Alii Bishop Bldg.  
1136 Union Mall, Honolulu  
Phone: 526-1544

## Waterbedroom Sale

### 1776<sup>00</sup>

Sound Sleeper Super Savings Sale  
thru Nov. 30th.

### COMPLETE WATERBEDROOM PACKAGE SALE!



**Independence Frame & Head Board King Size**

- Dresser/Hutch
- One Five Drawer Chest
- One Nite Stand Without Hutch
- Mark VI Heater
- Padded Side Rails
- Tuckaliner
- Liner
- Radial Lapmattress
- King Size Sheet Set

**Special Sale ONLY 1776<sup>00</sup>**  
IT'S A CELEBRATION.  
Does not include 12-drawer pedestal.  
**Every Day Low Price \$1923<sup>00</sup>**  
• Financing Available

Advertisement not paid for by the Navy Exchange.

**NAVY Exchange**  
MAS BARBERS POINT HI

Limited quantities on all items.

**AIKAHI AUTO PARTS**

OPEN: Mon. thru Fri. 9:30-7:00 Sat. 9:00-4:00 Sun. 9:00-1:00

**COMPLETE INVENTORY**  
For Domestic And Foreign Cars & Trucks

CALL NOW **254-3535**

**NAPA**  
KAPI DBA

★Where your "Auto Showcase" publication is still FREE.

**PROFESSIONAL MACHINE SHOP SERVICES**  
Available on anything Including:  
Heads Rebuilt  
Radiators Recored

CALL NOW **262-8146**

**KAILUA AUTO PARTS**

OPEN: Mon. thru Fri. 8:00-5:30 Sat. 8:00-4:00 Sun. 8:00-1:00

## BEST BUY OVERSEAS

BRAND NAME AMERICAN FURNITURE

Desks	Bedroom	Burlington	Harden
Lamps	Dining Room	Henredon	American/Drew
Pianos	Youth Room	Kimball	Leathercraft
Organs	Sofas & Chairs	Century	Stanley
Bedding	Leather	Magnavox	Hooker
Clocks	Bookcases	Thomasville	Hickory Lane
Brass Beds		Bennington	

**SAVE to 50%**  
Plus free USA Delivery

Your STATESIDE MILITARY BUYING SERVICE offers you Brand Name U.S. Home Furnishings at 35-50% savings.  
No taxes, storage, U.S. delivery or interest charges. Money back guarantee.  
Write for free DECORATOR BROCHURES (\$7.00 value) — & contact your local STATESIDE SERVICE.

**STATESIDE FURNITURE CORPORATION**  
Box 2221 La Jolla, California 92038  
Over 14,000 Satisfied Customers • Since 1967

\*Linda Kinney ph. 499-1425  
\*Francine Kemp 422-9586  
\*Arlene Knapp 624-4907

## GOOD YEAR POLYGLAS SALE!

**\$39.95**

B78-13 whitewall, plus \$1.80 FET. No trade needed.

**Cushion Belt Polyglas**

- The strength of fiberglass cord belts
- The cushioned ride of resilient polyester.
- The mileage of double-belted construction

**Sale Ends Nov. 14th**

RAIN CHECK — If we sell out of your size we will issue you a rain check, assuring future delivery at the advertised price.

**More Savings... All Whitewalls!**

Whitewall Size	SALE PRICE	Plus FET. No trade needed.
D78-14	\$45.30	\$2.04
E78-14	\$47.25	\$2.14
F78-14	\$47.50	\$2.28
G78-14	\$49.75	\$2.44
H78-14	\$53.20	\$2.62
G76-15	\$50.95	\$2.50
H76-15	\$55.40	\$2.72
L78-15	\$59.60	\$2.95

### STEEL RADIALS FOR IMPORTS

Arriva... Low, Low Priced **\$44.95**

P155/80R12 Blackwall, Plus \$1.40 FET, and old tire.

Blackwall Size	Fits	OUR PRICE	Plus FET and old tire.
P155/80R13	155SR13	\$48.90	\$1.51
P165/80R14	165SR14	\$62.30	\$1.76
P165/80R15	165SR15	\$62.30	\$1.82
P165/70R13	165/70SR13	\$54.50	\$1.47
P165/70R13	165/70SR13	\$59.05	\$2.03
P165/70R14	165/70SR14	\$62.40	\$1.82

Arriva. Even Its Footprint Tells You It's Different

### TRACKER LT — FOR PICKUPS VANS, CAMPERS, RV's

**\$51** **\$57**

E78-14 Load Range C, Tubeless Blackwall, Plus \$2.64 FET No trade needed.

G78-15 Load Range C, Tubeless Blackwall, Plus \$3.11 FET No trade needed.

- A light truck favorite that's all muscle
- The strength of tempered, long-wearing nylon cord
- The dependability of rugged bias-ply construction.
- Flat tread radius promotes long, even wear

**SALE**

**SAVE NOW THRU NOV. 14th**  
OTHER SIZES SALE PRICED TOO!

PROLONG TIRE LIFE, BOOST MPG

### Front-End Alignment

**\$21**

Parts and additional services extra if needed.

- Inspect all four tires
- Correct air pressure
- Set front wheel camber, caster, and toe to proper alignment
- Inspect suspension and steering systems • U.S. cars and imports with adjustable suspensions. Includes front-wheel drive Chevettes, trucks and cars requiring MacPherson Strut correction extra.

MAINTAIN STOPPING DISTANCE

### Brake Service Your Choice

**\$88**

Additional parts and services extra if needed.

2-WHEEL FRONT DISC: Install new front brake pads and grease seals • Resurface front rotors • Repack front wheel bearings • Inspect calipers and hydraulic system • Add fluid & road test car. (Does not include rear wheels)

OR

4-WHEEL DRUM: Install new brake lining, all 4 wheels • New front grease seals • Resurface drums • Repack front wheel bearings • Inspect hydraulic system • Add fluid & road test car • Most U.S. cars, some imports

Just Say "Charge It!"

Goodyear Revolving Charge Account

Use any of these other ways to buy: MasterCard • Visa • American Express Card • Card Blanche • Diners Club • Cash

## GOOD YEAR

**KANEOHE BAY SHOPPING CENTER**

Phone: 247-6668

**Store Hours:**  
Mon.-Fri. 7:30 a.m. to 6:00 p.m.  
Sat. 7:30 a.m. to 4:00 p.m.

Manager: Philip G. Smith



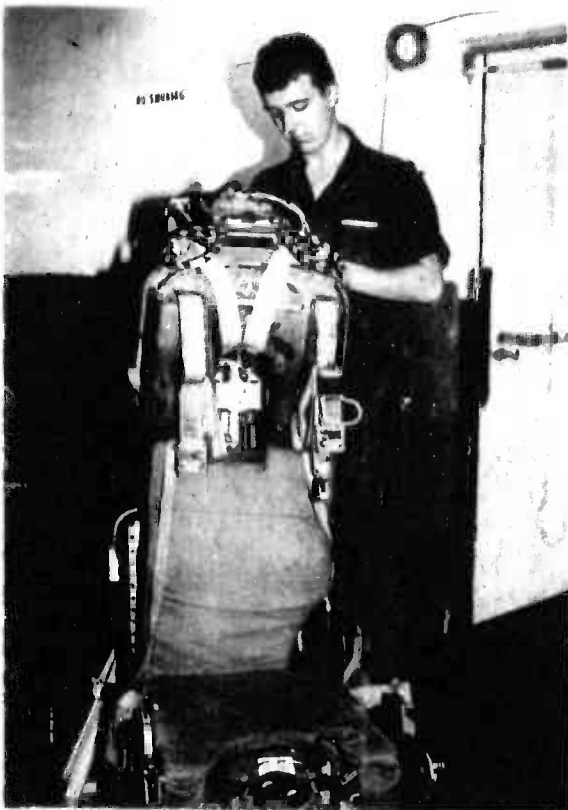


Photo by SSgt Joe Blackburn.

**ONE MORE ADJUSTMENT** — Lance Corporal Kenneth Jones, Marine Fighter Attack Squadron-212 Seat Shop, adjusts a strap to hold a parachute on the F-4S ejection seat. Members of the seat shop work to maintain the safety of crew members in the squadron.

## Leathernecks ensure pilot's safe escape

by Sgt Nora Parrish

While on a routine patrol, the pilot encountered an enemy aircraft. A "dog fight" began and the pilot's plane sustained heavy damage. He had only one alternative — to abandon it. He ejected and floated gently through the air. The plane nosedived to the ground, where it exploded. The pilot made a safe descent.

**ALTHOUGH THIS** situation is hypothetical, the eight Leathernecks of Marine Fighter Attack Squadron-212's seat shop work diligently to

ensure that their pilots, have the same opportunity to escape injury in case of an aircraft malfunction during flight.

"Our duty is to repair the planes' escape system, cabin air conditioning units and liquid oxygen system," explained SSgt William Ezell, Noncommissioned Officer-in-Charge of the Seat Shop.

"After a part is repaired it is inspected to verify that the work is done properly," SSgt Ezell added.

Some of the work performed by the seat shop may be accomplished inside the hangar, while others work on the aircraft.

**"WE TAKE THE** seats out of the aircraft once every 210 days," explained SSgt Ezell. "They are completely disassembled and thoroughly checked for proper working conditions."

Work performed on the aircraft includes examining the electrical system and checking for corrosion.

"Everyone in the shop works on a different system at one

time or another," said SSgt Ezell.

Training for a job in the seat shop is two-fold. Eleven weeks are spent at Naval Air Station Memphis, Tenn., followed by on-the-job training at a major air station.

**"A MARINE IS** usually OJT for about six weeks," said SSgt Ezell, "but it really depends on when a squadron needs someone for their seat shop. Some people wait six months or more to be assigned."

According to SSgt Ezell, if a seat shop repairman is used for

other duties for six months, he must revert to on-the-job training.

"For example," said SSgt Ezell, "I was once out of the seat shop for more than six months. When I came back I had to be recertified to work with liquid oxygen, handle explosives, and to do a lot of other work in order to be efficient."

SSgt Ezell also said that when an aircraft is preparing to take off, a seat shop Marine has to be present in case something goes wrong.

**"MOST OF THE** time we can repair the

item right away, and not have to abort the flight," he said.

Marines working in the seat shop must be aware of safety procedures, because they normally work with highly volatile liquid oxygen.

They work almost daily with explosive devices. The explosives make the ejection seats work, and allow no room for mistakes.

"The maintenance we do here has to be essentially perfect. Of course nothing is perfect but we have to be pretty darn close to it," SSgt Ezell said.

**WE BUY**

**GOLD • SILVER • PLATINUM**

**DIAMONDS • WATCHES**

**U.S. & FOREIGN COINS**

**PRESTIGE**

HONOLULU • KANEHOE

746 KAPAHULU 46-216 KAHUHIPA

735-2368 247-8477

OPEN 9-5 DAILY • SAT. 9-2

**COUPON**  
For First Plasma Donation  
NEW Donors Only!

\$12

**GET DOWN TO ALPHA**

**alpha**

PLASMA CENTERS

3179 KOAPAKA  
BEHIND AIRPORT RAMADA INN  
SP Ph. 836-0647

EARN AT LEAST \$17 EVERY WEEK  
DONATING LIFE-GIVING PLASMA.  
IT'S AN EASY WAY TO HELP  
OTHERS WHILE HELPING  
YOURSELF.

Our Hours Have Been Changed  
Just For You!

M-F 10-6:00 p.m. Sat. 8-2 p.m. Closed Sun.

\$1350

a month

Rent a  
Washing  
Machine  
or Dryer

SERVICE INCLUDED  
WE PICKUP  
AND DELIVER  
PH. 847-1344

TW SYSTEMS  
2522 Rose St. in Kalihi  
off Middle St.



**Get Carried Away...  
With Yamaha  
Portable Keyboards**

Get carried away by entertaining your friends at the beach, the park, or anywhere else with Yamaha Portable Keyboards. Their unique features make them easy and fun to play, even if you've never played before. The full range of musical sounds comes complete with automatic bass player, drummer and 3-part harmony.

Models range from \$160 to \$570.

YAMAHA

Yamaha Music Center  
1314 Kapiolani Blvd.  
(at Piikoi St.) Phone: 524-5675

CAMEL

Where a man belongs.

Warning: The Surgeon General Has Determined That Cigarette Smoking Is Dangerous to Your Health.

**Camel Lights or Camel Filters.**  
Experience the Camel taste.



**GOURMET CHEFS** — Sergeant R.W. Funk, left, and Gunnery Sergeant W.M. Boswell, Battalion Landing Team 2/3, cook steaks and hamburgers over a fire during a "steel beach" party last August aboard the USS Denver.

USMC photo



**TAKING A BREAK** — Battery B, Battalion Landing Team 2/3 takes a break while hiking on Diego Garcia in the Indian Ocean, last September.



USMC photo

**MODEL MARINE** — Captain W.A. Lachapelle, Commanding Officer, Battery G, Battalion Landing Team 2/3, poses in the field while participating in training exercises in the Philippines last August.

## Shipboard restrictions rule unit's regimen

Compiled by Sgt Inez J. Stoner

**AFLOAT IN THE WESTERN PACIFIC** — The sun is finally setting behind the Marines of Battalion Landing Team 2/3. This means that three months after leaving Pearl Harbor for a six-month deployment, BLT 2/3 has finally reversed its westward heading and is due home in time for Christmas.

Several days of extensive preparations preceded their departure for the Western Pacific and the Indian Ocean last July. In addition to the tactical preparations, the Marines were busy making last minute purchases, tying up a few loose ends and saying goodbye to friends and family.

**SEVERAL WEEKS** after leaving home port, the Marines of BLT 2/3, aboard the ships USS Okinawa, USS Denver and USS Schenectady, landed on Okinawa. There, the Marines participated in training exercises with Marines already based on Okinawa.

The BLT then headed for Subic Bay in the Republic of the Philippines where they also participated in field exercises. They moved from Pacific and into the Indian Ocean, heading toward their next port, Mombasa, Kenya on the east coast of Africa. Sept. 14 they turned the ships around and headed back toward the island of Diego Garcia in the Indian Ocean.

During their six-month, 25,000-mile deployment, the Marines of BLT 2/3 participate in a number of amphibious landings that involved landings that involve an enormous amount of preparation.

**ON THE DAY OF** an amphibious landing, the ship must ballast down to receive boats. Flight quarters are prepared to receive helicopters. The Marines pack last minute items into their packs and camouflage their faces before drawing their weapons and ammunition.

A perfectly planned and executed landing results in every Marine and every piece of equipment being in the right place at exactly the right time. Armored personnel carriers and helicopters with more troops must arrive on the beach at precisely the right time to support each other.

Reinforcements must arrive soon after that. Command posts must be set up and communications quickly established.

**AFTER THE FIRST** wave of troops and equipment hits the beach, back-up equipment and personnel are brought on with supplies necessary to support a Marine landing team in the face of enemy resistance.

"I think the troops really like to do their jobs," said Lieutenant Colonel M.W. Rakow, Commanding Officer, BLT 2/3. "They like the chance to go to the field and work in their MOS (military occupational specialty)."

When they are not assaulting the beach and participating in training exercises, the Marines of BLT 2/3 spend numerous weeks aboard ship. Ship troop compartments are usually less than half the space allowed for prison cells.

**OFTEN AS MANY** as 15 Marines live in an area 20 feet long by 10 feet wide. There are no chairs and locker space is minimal. It is a cramped way to live for weeks at a time in between ports.

Added to the lack of adequate sleeping quarters aboard ship is the lack of fresh water in the middle of the ocean. Not only is fresh water used for drinking, cooking and bathing, but it is also essential in the operation of the ships' engines. Fresh water is manufactured aboard ship by evaporators and usually there is plenty to go around. Sometimes, because of mechanical problems or overuse of fresh water, the pipes run dry. This is when Navy showers and water hours are put into effect.

**DURING WATER** hours the crew may use fresh water for drinking, washing and bathing only at certain times of the day. Water hours are maintained until the supply of fresh water returns to a safe level. It is during water hours that Marines learn the true meaning of a quick, cold shower. The water is turned on only to get wet and then again only to rinse off.

The threat of malaria, a serious problem in the tropics, is added to these discomforts. It is a problem that has plagued men fighting in jungle

environments for centuries. Today more is known about the malaria-carrying mosquito and its habits.

**BECAUSE OF** this knowledge, Marines participating in field exercises know when and where to protect themselves with gloves, head nets and by rolling down their cammie sleeves. Marines also sleep under mosquito netting and further protect themselves with an insect repellent that is six times stronger than any found on the market. As a final measure of precaution against malaria the Marines periodically swallow the "big, pink pill" known to prevent most forms of malaria.

It's not all mosquitos, water hours, cramped living quarters and big pink pills for the Marines of BLT 2/3. As one Marine put it, "give me liberty or give me death." The Marines of BLT 2/3 have enjoyed an abundance of liberty in many exciting ports. "We've gone from exercise to liberty ports

fairly quickly and there has been a good balance of work and fun," explained LtCol Rakow.

**BETWEEN THE** musical entertainment and the fantastic shopping, the Philippines is by far the favorite liberty port for Marines on deployment to the Western Pacific. "It's like nothing I ever dreamed of," said one of the Marines, about Olongapo City in the Philippines.

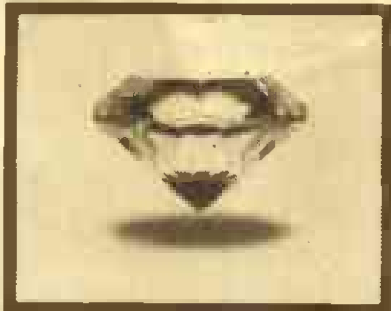
While in Kenya many Marines took advantage of one- and two-day photographic safaris to the Tsavo and Amboseli National Game Parks. They traveled by van to take pictures of lions, zebras, elephants and giraffes. Mombasa was also a favorite spot for bargaining with the street merchants for souvenirs.

Also in Kenya, the corpsmen supporting BLT 2/3 traveled into the jungle to open a civilian clinic and treated more than 100 people there.

**SOME MARINES** passed time cooking hamburgers and steaks at a "steel beach" party aboard ship. They also participated in the traditional initiation of the polywogs on the day the ship crossed the equator. The shellbacks, those who have crossed the line before, initiate the polywogs into the "mysteries of the deep." According to one polywog, "It will all be worth it, next year!"

With most of their training and nautical miles behind them, it's just a matter of time until BLT 2/3 returns. The Marines who step off those ships this December will have grown in many ways from the Marines who boarded the ships last July.

It has been a growing experience for the Marines of BLT 2/3. Not only have they received invaluable training, but they have also had the opportunity to meet, work with and get to know some of the people who are our allies.



### FINE JEWELRY AT YOUR MARINE CORPS EXCHANGE

- BEST SELECTION ON WINDWARD SIDE
- FREE GIFT WRAPPING
- EXCELLENT LAYAWAY PLAN
- LET OUR TRAINED STAFF HELP YOU



*Caribe*  
Diamonds

MARINE CORPS  
EXCHANGE BRANCH  
254-5370

MAIN STORE  
615 PIKIOI  
523-6915

THIS AD NOT PAID FOR BY MARINE CORPSEXCHANGE

OPEN  
THANKSGIVING  
DAY  
Nov. 26th  
All 24 HOURS

# 7-ELEVEN SAVES YOU MONEY WHERE YOU SAVE TIME



## COLD BEER

at  
Super Low  
CASE Prices

BUDWEISER or MILLER  
Handi 12 pack

\$5.99



24 - 12 oz.  
cans or  
bottles

\$10.99

EVERYDAY LOW PRICE

MILLER PARTY  
PACK CASE

\$9.99

24 - 12-oz. cans

## CIGARETTES

ALL  
BRANDS

\$6.49

Only CARTON

EVERYDAY LOW PRICE

### ICE COLD SOFT DRINKS

\$8.99

CASE

EVERYDAY LOW PRICE



HOLIDAY  
NOG

\$1.29

Qt.



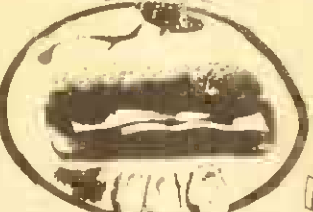
MILK  
HALF GAL

\$1.65

EVERYDAY LOW PRICE

OPEN 24 HOURS  
EVERYDAY  
Specials good thru 11/30/81

Instead of hassling with a turkey for lunch, try our delicious  
**LARGE HOT  
HAM & CHEESE**



\$1.39

each



THE SOUTHLAND CORPORATION



# Peer pressure measures inner strength

by Capt. Paul Stichick

WASHINGTON — One of the most difficult times to show that inner strength is when the element of peer pressure is present. If "the gang" is doing something that you feel is wrong, illegal or socially unacceptable, then often it is very hard to say no. Too often, you end up doing what "they" do, while ignoring your better judgment. This is most frequently the case with drugs.

Peer pressure plays a powerful and influential role in the development of a person, and it takes a special kind of person to stand alone in a crowd and say, "I don't get high." Such a response proves to yourself and shows others just how much you can resist the influence of "the gang."

Refusing to do something that you feel is harmful to your physical and mental health is merely common sense. Is it

sensible to put a bullet in a pistol, spin the chamber, put the gun to your head and pull the trigger? No. And regardless of what people may say, common sense dictates that drugs are not good if they are abused. Only under medical supervision can certain drugs be beneficial.

It's no big deal to tell someone what you don't want to do. You do it every day. The only difference is whether you are dealing with your friends or with someone from whom you seek no status or approval. When you are known for "having a good head on your shoulders," you command respect and admiration from those around you. You may even become the leader in your circle of friends. And remember, those people who tend to "follow the crowd" usually do just that for the rest of their lives. Stand and be a leader, say no to drugs.



Photo by Sgt. Ernie Carter

**ELECTRIC ENLIGHTENMENT** — Sergeant Howard Muller, Headquarters and Maintenance Squadron-24, contemplates energy information displayed by the Hawaiian Electric Company at the Marine Corps Exchange. The display included energy tips for home and work, water restrictors and a slide presentation of alternate energy sources being researched by Hawaiian Electric. The display was one program highlighting Energy Awareness Week, Oct. 25-31.

Applications are being accepted during November for inclusion in the upcoming book:

## LEADERS OF HAWAII 1982 Edition

Leaders of Hawaii will contain the biographies of outstanding men and women in business, government, the professions, community service and the arts.

Leaders of Hawaii will be richly bound with a gold stamped hard cover. Distribution is scheduled for February, 1982.

There is no charge for the publication of any biography in Leaders of Hawaii. If a photograph is submitted with the biography, \$25 is requested to cover the cost of publishing the photograph.

To request an application contact:

**LEADERS OF HAWAII**  
Ala Moana Building, Suite 2020  
1441 Kapiolani Boulevard  
Honolulu, HI 96814

Or phone the Publisher, Dr. Peter F. Senecal, at 531-7619

Leaders of Hawaii is a publication of Senecal & Associates, A Hawaii Corporation.

## KDEO COUNTRY RADIO Official Top 10 Songs

LAST WEEK	THIS WEEK	TITLE	ARTIST
2	1	Fancy Free	Oak Ridge Boys
3	2	My Baby Thinks He's A Train	Roseanne Cash
7	3	All My Rowdy Friends	Hank Williams, Jr.
5	4	Sleepin' With The Radio On	Charly McClain
6	5	Share Your Love With Me	Kenny Rogers
11	6	Wish You Were Here	Barbara Mandrell
8	7	Teach Me To Cheat	The Kendalls
12	8	Emily's Picture	John Conlee
20	9	Bet Your Heart On Me	Johnny Lee
16	10	My Favorite Memory	Merle Haggard

Listen to **BILLBOARD** Magazine's Top 40 Country Songs Saturdays and Sundays at 9 a.m. on

**KDEO Country Radio AM 94**

The Best of Country, from the Country, 24 hours a day.

The **SUN PRESS**  
and **KCC** support

## CRIME STOPPERS



If you know of, or see a crime call 955-8300 immediately. Crime Stoppers is a new system that keeps you anonymous and if your tip leads to an indictment or conviction you could earn up to \$1000.

### IS BUSINESS SLOW?

Advertising in the Sun Press can boost your business. We are the most cost efficient print media serving Windward Oahu. For more information feel free to call Chris at 235-5881.



SOFT CONTACTS

**\$98**

Includes tax, fitting instructions, starter kit, 120 day guarantee w/coupon

**10% OFF**  
**20% OFF**

First pair of Glasses  
Second pair of glasses

Over 100 Frames in Stock

**KAILUA OPTICAL**

262-6191

332 ULUNIU ST., IN KAILUA



The Windward Side's Only Candy Store

### ORIGINAL XMAS ORNAMENTS

• Beautiful Handmade Stained Glass Ornaments  
Priced from 13" to 15"

• Colorful Handwoven Wicker Ornaments from 9" to 14"

• Miniature Wicker Chests for that Precious Small Gift.

OUR ORNAMENTS WILL BECOME YOUR FAMILY KEEPSAKE

Prepaid XMAS Mail Orders For Christmas Delivery **10% OFF**

OPEN SUNDAY 11-3

located at 418C KUULEI ROAD • KAILUA PHONE: 262-2100

Next to McDonald's in the Municipal Parking Lot (Where Pizza Pete's used to be)

## NAILE'S CUSTOM UPHOLSTERY

Now Carrying RATTAN FURNITURE!



• Assorted Rattan Furniture at Warehouse sale prices.

• Baskets and Fans \$1 to \$10

• Foam Furniture Double Bed only \$259.95

Come in early for these excellent Christmas gifts.

**CALL NOW 261-7125**

153 Hamakua Dr. Kailua

## EMERGENCY MEDICAL CARE 24 HOURS A DAY/ 7 DAYS A WEEK INCLUDING ALL HOLIDAYS



Hawaii Emergency Physicians Associated, Inc.

Serving the Windward Oahu Community at



CASTLE MEMORIAL HOSPITAL

We Accept CHAMPUS, HMSA, MEDICARE and All Other Major Medical Insurance Plans.

**Phone 261-0841**

for Castle Hospital

Ask for your personal Emergency Medical Identification Card.

Hawaii Emergency Physicians Associated, Inc. • Established 1971

(Clip this ad and place next to your phone where this number will be handy.)

## 50% OFF BERNINA and VIKING 50% OFF

BERNINA 800

PRE-CHRISTMAS SPECIAL

VIKING 5710

Sug. Retail  
**\$650**

- Demo Model
- Exclusive 25 Year Written Warranty
- Makes Buttonholes

Demo Sale  
**\$325**

- Open Arm
- Monograms
- Self Adjusting Tension

Sug. Retail  
**\$596**

- Viking Electronic w/Built-In Cams
- Overlock
- Blind Hem

Demo Sale  
**\$298**

- Embroideries
- Self-Adjusting Tension
- Free Arm

**WE GUARANTEE THE LOWEST PRICES ON ALL OUR MACHINES**

Quantities Limited



MODEL 800

Hurry Sale Ends Sun. 11/15/82 pm

Quantities Limited



Model 5710

Hurry Sale Ends Sun. 11/15/82 pm

Monday thru Saturday 10:00-8:00

Wednesday 10:00-8:00 Sundays 11-5

**PACIFIC SURPLUS**

1247-F Pali Hwy. (1 block east of Castle Hospital) In the new 7-11 Complex in Kailua

**CALL NOW 262-8131**



IT'S A MAN'S WORLD SINCE 1939

## VETERAN'S DAY SALE

SPORT SHIRTS

**12.99**

Reg. to 32.00 Assorted short sleeved, button front style. Men's sizes S-XL.

Famous Makers BIKE SHORTS

**9.99**

Reg. to 20.00 Good looking, assorted bike shorts in sportive colors. Men's broken sizes 28-36.

Fashion KNIT SHIRTS

**10.99**

Reg. 22.00 Assorted short sleeved knits in pull-over style with shoulder stripe design. Men's sizes S-XL.

660 Kailua Road

Sale November 11-14

## Susan Beers' Salon INC.

featuring REDKEN & NEXUS

Please call for a FREE consultation. 116-C Hekili St. Kailua 261-8571

Hairstyling for men and women

Stylists: Phil Ventura Sharon Pearson Verna Soga Keala Doiera Keala Uemoto Polly Orr Debi Clay Candy Maynes

Manicures Juliette Nails & Lady Fingers Acrylic Nails

Manicurist: Lori Maddams Kathleen Kennedy

Make-Up Artist: Keala Doiera Waxing





Photos by SSgt Joe Blackburn

**VIPS VISIT** — (Above) Lieutenant General John Miller, Deputy Chief of Staff, Policies, Plans and Operations, Headquarters Marine Corps, accompanied by Brigadier General Bain McClintock, Commanding General, 1st Marine Brigade, extends a handshake to Colonel Michael Keane, Commanding Officer, 1st Radio Battalion, following a welcoming ceremony

at Dewey Square. LtGen Miller visited the Air Station and the 1st Marine Brigade Nov. 2. (Left) BrigGen Harry Hagaman, Director of Intelligence at HQMC, talks with Corporal Christopher Beebe, 1st RadBn, about the function of a radio direction finding system. The former Commanding General of the 1st MarBde, toured the Marine community here, Nov. 4.

## Physicians strive to convince cigarette smokers to kick the habit

When it comes to quitting cigarettes doctors obey the injunction "physician heal thyself." But it's much harder for doctors to convince patients to kick the habit, according to information compiled by the American Lung Association.

In a survey of the Los Angeles County Medical Association, only nine percent were smokers. This compares with a nationwide figure of 22 percent for all physicians, and 33 percent for the population as a whole.

In the poll, more than 90 percent of the respondents indicated they

felt an obligation to get their smoking patients to quit. But there's many a slip between the advice and the cure. Teenagers are the worst offenders, reluctant to give up the immediate pleasure because of distant problems.

"Trying to get young people to quit is like trying to tell people they should move out of California because there might be an earthquake. 'They just laugh,' said one physician. 'Youngsters are convinced it won't happen to them.'"

All of the doctors agreed that the truth about smoking should be

taught in the schools, starting with 6-year-olds. "No punches should be pulled," one physician wrote. "Children must be taught the facts about smoking, the dangers and risks to their health and their bodies."

Fear of disease, the survey indicated, didn't persuade young


people to quit or prevent non-smokers from starting. Young

TV announcements, a poster and magazine ad may have a better answer. Only 16 years old, Brooke appeals as one teenager to another. "Smokers are losers," she says in her TV messages and

"smoking spoils your looks," she says on the poster.

The Brooke Shields' materials are widely distributed by the

American Lung Association. Call the American Lung Association at 537-5966 for a Brooke Shields poster to display.



**SCHEDULED AIRLINES TICKET OFFICE (SATO)**

Staffed by full time Airline personnel  
To assist in your travel requirements


- Individual leave
- Family travel to the Mainland
- Neighbor Island
- International
- Dependent travel to West-PAC
- Fares
- Flight Information

Contact SATO for reservations and airline tickets at any one of our three convenient on base locations.

**Pearl Harbor** Bldg. 487 - Tele: 422-0571  
Office hours - Mon. thru Fri. 0730-1600

**Camp Smith** - Bldg. 2D - Tele: 487-1567  
Office hours - Mon. thru Fri. 0800-1600


**Kaneohe MCAS** - Bldg. 209 - Tele: 254-1564  
Office hours - Mon. thru Fri. 0730-1530



**RAMS**  
VS  
**CINCINNATI BENGALS**  
7:35 A.M.

---

PLAY BY PLAY WITH  
**BOB STARR/DICK BASS**  
WITH **STEVE BAILEY**



**KDEO**  
**COUNTRY RADIO**



**Leimana's**  
The Original  
Hawaiian Heritage  
Jewelry

**PRE-CHRISTMAS BRACELET SALE**



CUSTOM MADE IN 14K GOLD FREE SCROLL BACK ON BRACELET MADE ON LOCATION

**ORDER RIGHT NOW FOR CHRISTMAS DELIVERY BRACELETS**

8mm FLAT	REG. \$589.95	NOW \$395.00
10mm FLAT	REG. \$729.95	NOW \$495.00
8mm BARREL	REG. \$749.95	NOW \$529.00
10mm BARREL	REG. \$829.95	NOW \$595.00

**25% OFF**  
ALL RINGS AND PENDANTS

SALE HELD OVER TIL SAT., NOV. 14

NEWTOWN SQUARE BLDG.  
98-1247 KAAHUMANU ST. SUITE 308  
PEARL CITY, HAWAII  
OFFICE HOURS 10-5 MON.-SAT.  
PHONE 487-3572

WELCOME



WELCOME

**PRESENTING THE GREATEST VIDEO BUY IN HAWAII !!**

Save **\$400 OFF** the suggested list price of the **Zenith 9000.**



**BUY NOW & RECEIVE \$185 VALUE FREE** with the purchase of the Zenith 9000.

- ★ \$125 FREE Movie Rentals! (more than 1,000 movie titles to choose from)
- ★ \$50 FREE Video Club Membership with discounts on film rentals, equipment and accessories!
- ★ \$10 FREE Video T-shirt!

Save a total of **\$585** on the above package!



**VIDEO CENTER**  
The Video Specialty Stores

From Sensible to Sensational

**Perm Special**

includes:  
Conditioner  
Shampoo  
Cut  
Perm  
and  
Blowdry

Only **\$35.00** with this ad

Offer good till Nov. 18, 1981  
Aieahi Shop Only



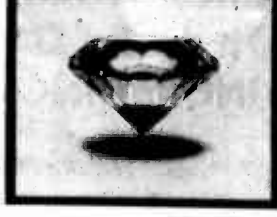
**international haircutters**

Koko Marina  
Second Floor, Waterfront Village  
395-7551

Aieahi Park Shopping Center  
Kailua  
254-1585

Monday-Saturday 9 am-9 pm  
Sunday 10 am-4:30 pm

Monday & Saturday 9 am-5:30 pm  
Tuesdays thru Fridays till 7:30 pm



**FINE JEWELRY**  
AT YOUR  
**MARINE CORPS EXCHANGE**

- BEST SELECTION ON WINDWARD SIDE
- FREE GIFT WRAPPING
- EXCELLENT LAYAWAY PLAN
- LET OUR TRAINED STAFF HELP YOU



**Caribe**  
Diamonds

**MARINE CORPS EXCHANGE BRANCH**  
254-5370

**MAIN STORE**  
615 PIKOI  
523-6915

THIS AD NOT PAID FOR BY MARINE CORPS EXCHANGE





Demonstrating a kick



All together now

## Kids kick out

Story and photos by Sgt Pepper Davis

Tiny feet and hands penetrate the air with make believe punches and kicks. High-pitched voices squeak out forceful grunts.

The instructor weaves in and out of each row of white-clad, perspiring youngsters. Occasionally he stops at random to observe someone. If he sees something wrong, he corrects it on the spot and give encouragement. If a student is performing exceptionally, he offers praise.

Approximately 40 students attend Scott Alexander's Children's Unified Taekwon-Do class. Alexander, a 3rd Degree Black Belt martial artist, governs his class with a firm — yet gentle — hand.

The children's class meets Mondays, Wednesdays and Fridays in the Family Services Center Gymnasium. They range in age from four to 13 years, and consists of 10 white belts; seven yellow belts; four green belts; eight brown belts; 10 red belts, and two black belt holders. Almost every other week, another youngster is added to the roster.

According to Alexander, new students are treated basically the same as the others, but he tries to make the transition as smooth as possible.

"The first thing I instill in new students is discipline. That's very important. Then I teach them coordination and some basic kicks and punches," he commented.

Spectators who pause to watch the youngsters usually marvel at the energy and enthusiasm they exhibit. When summoned by the instructor, a student smartly acknowledges with a resounding "Sir," then hustles to the front of the class.

For one hour there's no time for play, just serious, hard work. And when the session is over, the joking begins and Alexander entertains questions.

Although Alexander teaches an adult class, he says he gets his kicks out of the youngsters. "Working with the kids is a challenge. It's also very rewarding," he said.



Charge!!



Bending over backwards to please

## Sportnotes

The University of Hawaii will put on an exhibition/scrimmage game and will host a clinic Nov. 19 at 7 p.m. in Hangar 103. During half-time Coach Larry Little and his assistant coaches will answer questions and talk basketball with intramural and varsity coaches. At the conclusion of the game, he and his coaches will conduct a 30-minute clinic with all spectators.

The Hawaii Marine Athletic Council Flag Football Championships will be decided Saturday and Sunday at 3 p.m. at the Pop Warner Field. The Air Station will host Camp Smith in the best out of three series with

the winner pitted against the Army, Navy and Air Force for the interservice title.

The Intramural Basketball season kicks off Monday with the first game at 5:30 p.m. Three games a night will be played every Monday, Thursday and Friday with afternoon games Saturday and Sunday. There are 18 teams participating in three divisions.

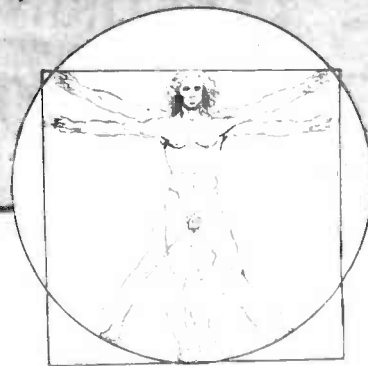
The Men's Golf Association will host a tournament Saturday with a shot-gun start at 7:15 a.m.

The Marine Corps needs qualified coaches

for both men's and women's basketball, softball, volleyball and men's soccer. This year only two applications were received for each sport and in one case only one application was submitted.

Qualified coaches are reminded that applications can be submitted via the chain of command in accordance with MCO 1710.21B at least 60 days before the commencement of the trial camp. Basketball trial camps are tentatively scheduled for March 1982, so applications should be in no later than Jan. 1. For more information, call Marine Corps Sports Unit, Major J.B. Egan or Mrs. Pam Hodge at AUTOVON 224-2655/2450.

## MEN, COME JOIN OUR CLUB



## Natural Man

Not to be confused with "just another Health Spa"

Our club is dedicated to men who care about themselves, and know the value of good health. We have programs that will get you in shape and outdoor activities to help you stay in shape.

**Call or Come In Today and Join  
THE WINNERS  
at  
Natural Man**

**SPECIAL  
LIMITED  
MEMBERSHIP \$99**

Personal Exercise & Nutritional Programs  
Complete Facilities • Individual Fitness Analysis  
**ACTIVITIES INCLUDE**

Running • Hiking • Cycling • Pooling • Volleyball • Scuba Diving • Parachuting

**RESULTS GUARANTEED  
CALL 261-7903 NOW**

1090 Kalia Dr., Enchanted Lakes



# MACS-2, VMFA-212 emerge winners

by LCpl Charlie Marshall

MACS-2 started an upward swing Nov. 3 when they defeated Maintenance Company, Brigade Service Support Group in the final seconds of the game. The score was tied 3-3 until Corporal T.J. Rahmberg booted a 62-yard field goal to qualify his team for the semi-finals.

In the playoffs, quarterback Cpl Tim Bougher led his team

to victory over Communications Support Company 17-14 Saturday at the Station Training Field.

Cpl Bougher connected with short passes over the middle and out in the flats to gain first downs and keep control of the game.

Their defense was so effective Comm Support's deepest penetration in the first half

was to the MACS-285-yardline.

Early in the first half Cpl Bougher found Cpl J.C. Payne for a 40-yard gain. On the next play hit Sergeant Steve Moberly over the middle to bring the ball to the 2-yardline. After being set back by a penalty, Cpl Bougher rolled left and ran the ball into the endzone. Cpl Rahmberg's kick made the score 7-0.

Following this scor-

ing drive, Communications Support Company was unable to move the ball out of their own territory after Private Calvin McCrary dropped the kick-off on his own two yardline.

MACS-2 set up their second scoring drive when Cpl Bob Conti caught a pass for a first down. As the quarterback fell back into his pocket, on the next play, Cpl Payne streaked into the endzone and Cpl Bougher connected for his second touchdown.

After a penalty was enforced on the kick-off, Cpl Rahmberg kicked the ball deep into Comm Support's endzone. On the first play quarterback cpl Samuel Barber threw the ball up for grabs and MACS-2 came down with it.

Two sets of downs put MACS-2 in field goal range and Cpl Rahmberg returned to the field to shut Comm Support out of the first half 17-0.

As Communications Support Company returned for the second half, so did the passing combination of Cpl Barber to Lance Corporal Fred Rainey. Cpl Barber hit LCpl Rainey on an important fourth down conversion play and later for the touchdown. Down by 11 points they elected to pass the ball for the two point conversion which put them on the scoreboard 17-8.

As the final seconds ticked down Cpl Barber connected with Pvt McCrary for long yardage. After several attempts at the bomb, Comm Support came up with a pass interference call which brought the ball to the nine yardline. Cpl Barber threw to LCpl Kevin Tucker for the final scoring play and MACS-2 once again emerged the winners, 17-14.

Kilo, 1/12 vs Amtracs In the following

game Private First Class Rickey Williams was on the receiving end of a Pvt Oltha Wallace pass to put an end to the scoreless deadlock which left football fans asleep. With less than five minutes left in the game, Battery K, 1st Battalion, 12th Marines' touchdown assured themselves of a semi-final berth.

Amtracs almost made it on the scoreboard, but their field goal attempt was wide.

As a finale Pvt Wallace, acting as a one-man team, came down with an interception and returned it 10 yards. The quarterback, unable to find an open receiver at his pass protection crumbled, scrambled and outran the entire Amtrac defense to score the touchdown. His final effort capped off a 14-0 victory.

**MACS-2 vs MABS-24**  
For the past two years Marine Air Control Squadron-2 has dominated flag football and this year is no different as they upset the winningest team in the league, Marine Air Base Squadron-24, 21-8 at the Station Training Field Sunday.

**VMFA-212 vs Kilo, 1/12**  
1/12's luck did not carry over into the semifinals as they lost their shot at the championship Sunday, relinquishing it to an aggressive Marine Fighter Attack Squadron-212.

On the first play of the game, 1/12's touchdown was called back on a penalty.

VMFA-212 earned their chance to dethrone the twice defending champion MACS-2 when Sgt Jim Freel caught up with a Cpl Arnold Vice pass for a touchdown. The conversion attempt failed, however, VMFA-212 triumphed over Kilo, 1/12.



Photo by Sgt Pepper Davis

**SAME TEAM! . . . SAME TEAM!** — Teammates Corporal Vernon Collins (left) and No. 36 Private First Class Rickey Williams of Battery K, 1st Battalion, 12th Marines battle for the football during a

playoff game against Marine Fighter Attack Squadron-212. Neither player caught the ball and their team lost the match 14-0 Saturday.



Photo by Sgt Pepper Davis

**HIGH STEPPIN'** — Corporal Tim Bougher, quarterback for Marine Air Control Squadron-2, tries to tip-toe away as his pass blockers ward off the oncoming Communications Support Company's rush. MACS-24 won both of their play-off games defeating Comm Support Saturday 17-14 and Marine Air Base Squadron-24 Sunday 21-8.

## SEND HAWAII HOME FOR CHRISTMAS!

Discover Hawaii's scenic beauty—22 color photographs.

- Give one gift to the entire family for less than \$15.00.
- Mailed directly to friends and relatives on the Mainland. Gift card included.
- Christmas delivery if order is received by December 7th.
- Not available at Post Exchange.

### DISCOVER HAWAII GAME

The Imagination Factory, Inc./2525 16th St./Columbus, IN. 47201

Please send me \_\_\_\_\_ games. I enclose \$14.95 for each game ordered. MONEY ORDER, CASHIER'S CHECK, MC, OR VISA ONLY. CHARGE CARD NUMBER \_\_\_\_\_  
SORRY, NO PERSONAL CHECKS ACCEPTED. MAINLAND DELIVERY ONLY.

SHIP TO: PLEASE PRINT  
Name \_\_\_\_\_  
Street \_\_\_\_\_  
City \_\_\_\_\_ State \_\_\_\_\_ Zip \_\_\_\_\_  
(List extra names and addresses on separate sheet.)  
FROM: \_\_\_\_\_ (Name to appear on gift card.)

**ONLY \$14.95**  
Includes shipping

## Feeling smart?

Education Programs  
what does the Corps offer?  
Correspondence courses?  
College programs?  
Good question!  
For good answers...  
see your Career Planner...

## HURRY . . . ONLY 20 DAYS LEFT!

### OWNER RETIRING!

### GOING OUT OF BUSINESS!

# EVERYTHING MUST BE SOLD

- ALL VITAMINS and SUPPLEMENTS **25% OFF**
- GROCERIES **25% OFF**

Here's your chance to buy vitamins below Supermarket prices!

### LEASE PAU!

### AMBASSADOR GREETING CARDS 50% OFF

### YOUR LIFE

Windward City Shopping Center  
Kaneohe Bay Dr. at Kam Hwy.  
Mon. - Sat. 9 - 5 p.m.

We Accept Visa and Master Charge

## THE FUTURE IS IN FLORIDA

Now is the time to buy a beautiful 10,000 sq. ft. home in any one of eight spectacularly developed Florida communities. General Development Corp. — one of the country's largest community developers and home-builders — offers homes starting at \$82,950 with a low down payment and interest rates as low as 6%. If you wish you had purchased in Hawaii five years ago, you'll find Florida is the answer for you today.

U.S. Properties, Inc.  
Century Center  
Suite 200  
1700 Kalia Rd.  
988-2148

# GOOD YEAR

## ROCK BOTTOM PRICES

Shop And Compare! Our Low Prices Are Your Very Best Buy.

### OUR MOST POPULAR BLACKWALL Power Streak 78

Bias Ply Polyester

**\$22.95**

SIZE	BLACK WALL PRICE	WHITE WALL PRICE	Plus FET and old tire
600-12	\$27.99	\$36.99	\$1.39
670-13	\$26.99	\$31.99	\$1.61
670-14	\$31.99	\$33.99	\$1.68
670-14	\$32.99	\$36.99	\$1.77
670-14	\$33.99	\$38.99	\$1.75
670-14	\$33.99	\$38.99	\$2.28
670-14	\$37.99	\$40.99	\$2.32
670-15	\$36.99	\$39.99	\$2.36
670-15	\$38.99	\$41.99	\$2.37
670-15	\$38.99	\$41.99	\$2.84

A78-13 Blackwall, plus \$1.50 FET and old tire

### Double Glass-Belted WHITEWALL

CUSHION BELT POLYGLAS

**\$34**

White Wall Size	PRICE	FET and old tire
670-14	\$44.99	\$2.08
670-14	\$47.99	\$2.14
670-14	\$49.99	\$2.28
670-14	\$52.99	\$2.44
670-14	\$54.99	\$2.62
670-15	\$53.99	\$2.50
670-15	\$54.99	\$2.72
670-15	\$57.99	\$2.95

Big in performance, low in price... that's the Custom Built Polyglas story. Smooth-riding cushion belt body, firm fiber glass belts for strength, handling and puncture resistance in the tread area. White sidewall design!

### COME FLY WITH THE EAGLES

Glass-belted gas-saver for street machines and vans

**EAGLE ST RADIAL**

Speed White Letters Size	SALE PRICE	Plus FET No trade needed.
P185/70R13	\$67	\$2.00
P195/70R14	\$66	\$2.27
P215/70R14	\$69	\$2.45
P225/70R14	\$76	\$2.85
P225/70R15	\$78	\$2.90
P235/70R15	\$85	\$3.20

### ALL SEASON STEEL RADIALS

Tempo Radial—Double Steel Belts

**\$35**

White Wall Size	PRICE	FET and old tire
P155/80R12	\$45	\$1.31
P165/75R13	\$49	\$1.61
P185/80R13	\$56	\$1.95
P195/75R14	\$60	\$2.23
P205/75R14	\$69	\$2.34

OTHER SPECIAL LOW PRICES

### PREMIUM QUALITY RETREADS

FOR MANY SMALL CARS

**14.95**

670-13-670-14  
670-13-670-13  
670-13-670-13

UNIVERSAL RETREAD—FETES Plus Tax, \$1.00  
RETIRED TIRE—FETES Plus Tax, \$1.00

### COMPARE and SAVE TYPE BRAKES

**\$49.95**

4-Wheel All 4-Wheel Disc Brake  
4-Wheel Disc Brake  
4-Wheel Disc Brake

4-Wheel Disc Brake \$49.95  
4-Wheel Disc Brake \$49.95  
4-Wheel Disc Brake \$49.95

### SHOCK SPECIAL

**\$16.95**

4-Wheel Disc Brake  
4-Wheel Disc Brake  
4-Wheel Disc Brake

### BATTERY

**\$27.95**

4-Wheel Disc Brake  
4-Wheel Disc Brake  
4-Wheel Disc Brake

## MOTOR SUPPLY

Serving Hawaii For Over 50 Years

Conveniently Located In Kailua  
724 Kailua Rd.  
Call Now  
**261-1741**

OPEN  
M-F 8:00-5:00  
SAT. 8:00-4:30  
SUN.-CLOSED



# Two leathernecks complete emergency medical course

by Sgt Inez J. Stoner

Two Marines from the Crash, Fire and Rescue, Station Operations and Maintenance Squadron, were among 12 people who graduated Oct. 19 from the Emergency Medical Technician Course at the Naval Regional Branch Clinic, Pearl Harbor.

Corporal Thomas Ray and Lance Corporal Gerard Thompson were graduated fourth and third respectively in the class that began Aug. 17. The two Marines are now registered in 39 states including Hawaii as qualified Emergency Medical Technicians.

**ON THE JOB** at Crash, Fire and Rescue, the two Marines respond to every type of emergency on the airfield here at the Air Station. "We're here if they need us," said Cpl Ray, "and we're constantly ready."

According to LCpl Thompson, "We don't get a lot of medical problems here but it's nice to know that we have people who are

qualified to take care of it if we do have an emergency."

The first four weeks of the course involved classroom study for the two Marines along with two airmen, two civilians and 12 Navy corpsmen. The last four weeks of the course was the clinical phase, during which the students participated in a number of ambulance runs, observing actual emergencies. They also observed emergency room procedures of several civilian hospitals and the Tripler Army Medical Center.

"ONE THING I found through the entire course," said Cpl Ray, "was the stress they put on each individual. We learned about how we react to stress and how other people react to stress. Everybody has a certain stress point and it benefits us to know that." He continued, "Stress wasn't taught as an individual subject, it was just the way the whole course was taught." Subjects studied

during the course included human anatomy, reading electrocardiograms, cardiopulmonary resuscitation and ambulance technician procedures.

"THE CLASS is designed so that you can't cheat," explained LCpl Thompson. "If you don't know what you're doing in the class then you're not going to know what you're doing out there (in an emergency) and you're going to kill the person you're trying to save."

According to Cpl Ray, "This course is the hardest in the nation. You felt good just making it to the next step."

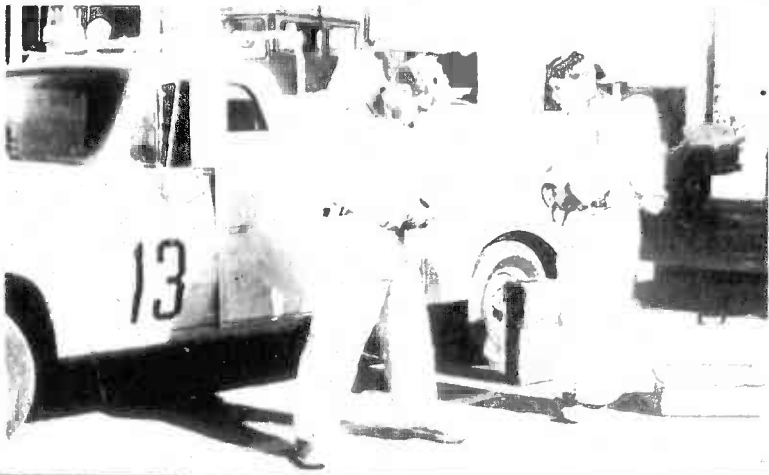
"It was a good class," said LCpl Thompson. "No, it was an excellent class, very advanced and very involved," said Cpl Ray, "I really like my job and I'm getting a lot more gratitude now that I've been through this course."

CPL RAY has been a crash rescue crewman since his arrival here more than a year and a half ago. The 20-year-old native of Vancouver, Wash.

enlisted in the Marine Corps in July 1979.

LCpl Thompson, 22, enlisted in the Marine Corps in August 1979 near his home town of Fremont, Calif. He was stationed at MCAS Cherry Point, N.C. before coming to Crash, Fire and Rescue here in June of this year.

Cpl Ray and LCpl Thompson are now ready and patiently waiting to use, in their everyday duties, the training that they received at the Emergency Medical Technician Course. Cpl Ray summed up the experience by saying, "A lot of people were really impressed that two Marines — two 'Jarheads' — really made it through the course. It made us feel good."



**TRAINED AND READY** — Corporal Thomas Ray, left, and Lance Corporal Gerard Thompson, Crash, Fire and Rescue Branch, prepare themselves for any type of emergency situation that may occur at the Station's airfield. The two Marine recently graduated from the Emergency Medical Technician Course at the Naval Regional Branch Clinic, Pearl Harbor.

**Real Estate School**  
**\$195**  
**plus books**

Salesman  
Prelicensing  
Classes Only

Classes start  
Nov. 23 with State  
Exam in February.  
Class size minimum of 10.

**Fahrni School of Real Estate Inc.**

**H&R BLOCK**  
Income Tax Preparation  
Phone  
**537-9945**  
or  
**487-8531**



**KANEOHE TRAVEL AGENCY, INC.**  
**PH. 247-2113**  
**LAS VEGAS**  
**\$390<sup>48</sup>**  
**6-23 DECEMBER '81**  
INCLUDES ROUND TRIP AIR FARE  
4 NIGHTS AT FLAMINGO HILTON HOTEL  
IN THE MIDDLE OF THE STRIP

**MERRY XMAS**

HENRY LEE  
TRUDA IRVINE  
LEIALOHA KEMA  
MELISSA STALEY  
CHARLOTTE MURAOKA

VIOLET LEE  
KRAMER PAAGA  
GLORIA MENDOZA  
FRANKLIN BAKER  
MIU LANG MULLIGAN

XTRAG0053  
Mon. thru Sat. 9-5 p.m.  
**WINDWARD CITY SHOPPING CENTER**

**ENCHANTED TRAVEL, INC.**  
Joy Joaquin  
Manager  
Servicing all your travel needs at No Charge!  
1051 Keolu Dr. in Kailua  
(Next to Dairy Queen) **261-7947**  
OPEN M-F 9:00-5:00, SAT. 9:00-12:00

**FREE SPINAL EXAMINATION**

Danger Signals of Pinched Nerves:  
1. Frequent Headaches  
2. Low Back or Hip Pain  
3. Dizziness or Loss of Sleep  
4. Numbness in Hands or Feet  
5. Nervousness  
6. Neck Pain or Stiffness  
7. Arm and Shoulder Pain

**Pacific Chiropractic**  
602 KAILUA RD. #207  
**261-0831**

  
DR. JEANNE HALPAIN  
RN. DC.

**Real Estate**  
By Eileen Hanohano  
REALTOR®

**CHECK OFFER WITH CARE**

Your home has been for sale. Inspected and the latest enthusiastic prospect presents you with an "offer" to buy. Review this offer with care. It's an extremely important part of the sale.

Are all names correct? Is the property correctly described? Is the mortgage information accurate? Can you move by the possession date? Is the purchase price satisfactory? Then double check your calculations to be sure you know how much cash you will receive. If you have any doubts about points contained in the offer do not sign it until they have been completely removed from your mind.


The offer to purchase is binding on the purchaser for the amount of time stated in the offer. You can accept it without change. You can let it expire, or you can consider changes. If you change anything in the offer you are reversing the process and making an "offer" to sell to purchaser who then has the same options.

Before you sign, be certain that it clearly states all the points of agreement because the sale will be according to the letter of that script.

If there is anything we can do to help you in the field of real estate, please phone or drop in at the office of ERA HANOHANO REALTY, 765 Kam Hwy, #208, Pearl City. Phone: 456-4273 or 823-4041. We're here to help.

**6 WEEK INTRODUCTORY COURSE FOR ORGAN**  
Easiest and Fastest Method Known

Designed Especially for Persons with No Musical Knowledge. Whatsoever from Ages 16 to 80.



Class Meets Weekly for 5 Consecutive Weeks on Tues., Fri. and Saturday. You need not own an organ. All music & materials are furnished.

**REGISTER NOW!**  
This Entire Program **\$19.95** per person.

**Call THAYER'S 536-8181**  
1020 Aieha St.  
FREE Parking

**Jan Takushi**  
As your instructor, may I personally invite you to join us — it will be an experience to last a lifetime. [Private lessons also available.]



## WE'VE BEEN FLYING FROM HONOLULU TO DALLAS-FORT WORTH AND BEYOND FOR TWELVE YEARS.

Fly Braniff's 747 nonstops to Dallas-Fort Worth any day of the week. From there, you can connect to Braniff cities in Britain, South America, Canada, Mexico and throughout the U.S.A. Without ever changing airlines or terminals.

**U.S.A.**  
Amarillo  
Austin  
Chicago  
Corpus Christi  
Dallas-Fort Worth  
Des Moines  
Fort Lauderdale  
Harlingen  
Houston  
Kansas City  
Lubbock  
Memphis  
Miami

Midland-Odessa  
Minneapolis-St. Paul  
Nashville  
New Orleans  
New York-Newark  
Oklahoma City  
Omaha  
Orlando  
Philadelphia  
San Antonio  
Tampa-St. Petersburg  
Tulsa  
Washington, D.C.-Baltimore  
Wichita

**CANADA**  
Montreal  
Toronto

**BRITAIN**  
London

**SOUTH AMERICA**  
Asuncion  
Bogota  
Buenos Aires  
Cali  
Caracas

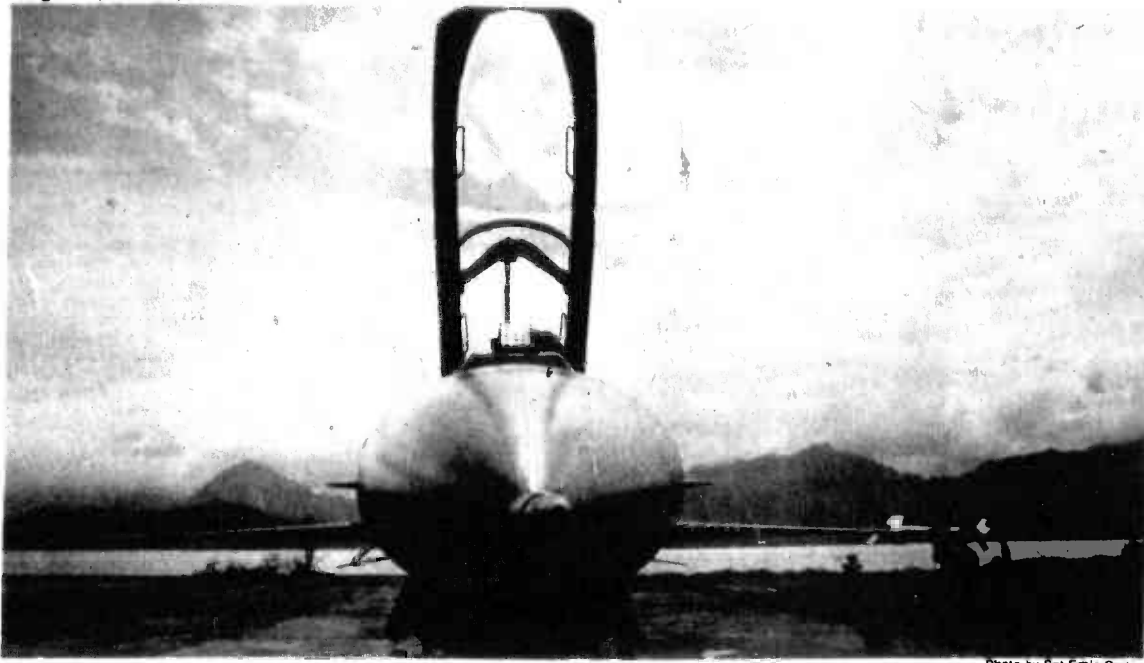
Guayaquil  
La Paz  
Lima  
Maracaibo  
Panama City  
Quito  
Rio de Janeiro  
Santiago  
Sao Paulo

**MEXICO**  
Acapulco  
Mexico

For reservations, call your travel agent, corporate travel office or Braniff in Hawaii toll-free at (800) 527-5090.

# BRANIFF





**READY TO LEAVE THE NEST** — An Air Force F-16 Fighting Falcon is readied for flight. Ten of the swift aircraft and more than 100 airmen from the 474th Tactical Fighter Wing, Tactical Air Command, Nellis Air Force Base, Nevada stayed here from Oct. 2 through Nov. 2 while engaged in exercise Cope Elite, 82-1.



Photo by Sgt Ernie Carter

# Air Force bird nest at Kaneohe Bay

by Sgt Ernie Carter

Swallows fly peacefully south from Mission San Juan de Capistrano in southern California each year on Oct. 23 and return March 19. Their flights are so predictable the calendar could be set by their migrations.

Another, less predictable bird flew south this October from nearby Nevada with nine of its kindred. They are not gentle birds like the swallows, but birds of prey, war birds, falcons.

**THE 10 ARE F-16** Fighting Falcons from the 428th Tactical Fighter Squadron, 474th Tactical Fighter Wing, Tactical Air Command, Nellis Air Force Base. They left their desert nests Oct. 2 and flew south to Paradise and Marine Corps Air Station Kaneohe Bay.

The 428th, nicknamed Buccaneers, came to Oahu to participate in Cope Elite 82-1, a tactical deployment to provide close air support for TAC forces and Hawaii-based Army units involved in exercise "Opportune Journey."

According to Air Force Major Roger Busico, 428th TFS, the squadron accomplished several training missions while in Hawaii.

Maj. Crit Critendon, the squadron's operations officer said that 75 to 80 percent of the sorties flown by the F-16s were air-to-ground, close air support. The remainder were for Dissimilar Air Combat Training.

and F-4S Phantom IIs against the Buccaneers' Fighting Falcons on DACT missions.

Maj. Busico said of the DACT missions, "The F-4 is a proven aircraft and has capabilities that the Marine pilots exploit well. Similarly, the F-4 has its benefits. It has a good turning radius."

The Major said that the 474th is the first fully operational F-16 wing. "The F-16 is a superior aircraft. Even with the limited experience we've had with her, we've been able to hold our own," he said.

**MARINE CAPTAIN** Clay Slittings, Operations Officer, H&MS-24, said, "It was good practice for both squadrons. Their planes are really impressive and our pilots learned quite a bit. I think the DACT missions definitely

showed the benefits of the '16's electronic controls systems."

One of the things that impressed the captain about the Fighting Falcons is their maneuverability.

"I spent a minute and a half behind the wing line of an F-16 and couldn't hit it because of its ability to turn quickly," he said.

He added that the A-4s and F-4s held their own against the F-16s.

**MORE THAN 100** airmen joined the pilots of the 428th to provide support for the F-16s.

"Our maintenance people have worked very hard and all our flying is directly attributed to them," Maj. Busico said.

The maintenance personnel from the 474th Aircraft Generation Squadron accomplished their regular training schedules while preparing the F-16s for their daily flights.

One portion of their training involved arming the F-16 with the Sidewinder heat-seeking missile, in minutes. And, they did it while in full Nuclear, Biological and Chemical equipment.

**THE EQUIPMENT**, designed to protect the wearer in case of NBC attack, included special protective trousers, jacket, boots, gloves and hooded field protective mask. The suits are lined with charcoal and once they are unpackaged are good for 14 days wear. If used in a contaminated area, the suits offer protection for only six hours. They must then be disposed of because they cannot be decontaminated.

The Air Force team used equipment from the 1st Marine Brigade's NBC school, because the 474th AGS didn't bring that type of gear with them.

After 31 days, the Buccaneers packed up their flight suits Nov. 2, boarded their fighting Falcons and flew back to their arid roosts in Nevada.

**NO CARNIVAL RIDE** — Sergeant Scott Nakashige, Marine Fighter Attack Squadron-235, takes the back seat in an Air Force F-16 Fighting Falcon from the 428th Tactical Fighter Squadron, 474th Tactical Fighter Wing, Tactical Air Command, Nellis Air Force Base, Nevada. Sgt Nakashige was given a ride in the Air Force fighter in appreciation of the Air Station's support of the Air Force squadron during its stay here Oct. 2 through Nov. 2.

## YOUR MICROWAVE OVEN HEADQUARTERS

Individual Features Include

DIGITALS

PROBES

CAROUSELS

ROTOWAVES

Act Now offer good for 5 DAYS ONLY thru Sun. 11/15/81

**NEW**

VALUES TO \$528

**\$287**

Limit 2 per customer

OUR GUARANTEE: If you find your microwave at a lower price within 30 days of purchase — we'll refund the difference — in cash!

PANASONIC TAPPAN AMANA LITTON

Financing Available

**Pacific Surplus**  
Your Microwave Specialists  
1247-F Pali Hwy. (1 block east of Castle Hospital in the 7-11 complex)

CALL NOW **262-8131**

Monday thru Saturday 10:00-8:00  
Wednesday 10:00-6:00  
Sundays 11-5

# THE OFFICIAL 9th ANNUAL HONOLULU MARATHON PROGRAM

We're off to another exciting 9th Annual Honolulu Marathon! This year on December 13th, this annual event will encourage national and local runners to challenge this grueling 26 mile event beginning at the Aloha Tower and ending at Kapiolani Park. The SUN PRESS and the Honolulu Marathon Association will again publish the official program for our readers and Marathon participants, giving all businesses the opportunity to reach 108,000 Oahu suburban and military homes plus approximately 8,000 participants. Featuring world famous runners, exhilarating photography and unrivalled editorial coverage, plus a list of runners and their standings. This tabloid will surely be read and re-read. Reserve your space today!

Publication Date: December 2  
Space Reservation: November 16  
Camera Ready: November 19

PUBLISHED BY  
**Sun Press**  
Including Waipahu Sun News, Hawaii Navy News, Honolulu Falcon and Hawaii Marine

235-5881



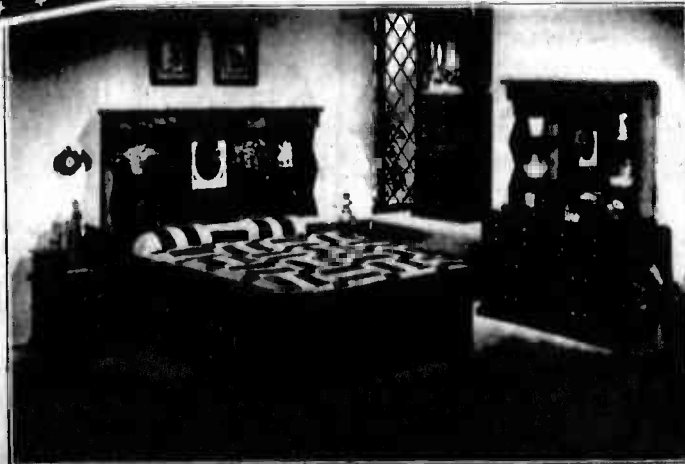
## Waterbedroom SALE!

# FREE!

**ONE NITE STAND**  
With the purchase of a CORONA 1 WATERBED.  
Now thru Nov. 30th.

### THE TIMBERLINE WATERBED

Traditional Styling for those of us who want the combination of styling plus comfort.



\* COMPLETE LINE OF ACCESSORIES

**SAVE 20%**

**On All Contempo Waterbeds**  
Prices Begin at \$216.00  
Good thru Nov. 30th only.

\* NO LAYAWAYS ON CONTEMPO WATERBEDS  
Available at your

NAVY *Exchange* PEARL



# Paradise Pastimes

**WITHIN THE GATES** — The Armed Services YMCA Outreach is sponsoring a display and demonstration of 60-80 toys as a part of their weekly Women's Awareness Program, Nov. 18 from 9 till 11 a.m. in building 455 at MCAS, Kaneohe Bay. "Learning Through Play" with "Discovery Toys" will be presented by Carol Price.

Transportation and child care, 50 cents per child is available. Make reservations by calling Armed Services YMCA Outreach at 254-4719/4965.

Armed Services YMCA Outreach is sponsoring an excursion to "Paradise Park" Nov. 19, where a giant bamboo forest, tropical plants and flowers, a scenic flamingo lagoon and a trained bird show can be seen. The Armed Services YMCA bus will depart from the parking lot of building 455 at MCAS Kaneohe Bay at 8:30 a.m. and return at 1:45 p.m.

The excursion costs \$2.50 per adult which includes the bus ride and special discount entrance fee to the park.

Child care is available at \$1 per child. Adults are ask to bring a lunch for themselves and their children. Please make reservations early as bus space is limited. Call Armed Services YMCA Outreach at 254-4719/4965.

"Holiday Art" with Marcia Morse, Art Instructor, as part of their weekly Women's Awareness Program, Nov. 25, from 9 till 11 a.m.

This demonstration on designing and printing Christmas wrapping paper and personalized greeting cards will be held in building 455 at MCAS, Kaneohe Bay. Participants are requested to bring scissors, pen and small ruler. Cost of admission is 50 cents per adult.

Transportation and child care, 50 cents per child, is available. To make reservations call Armed Services YMCA Outreach at 254-4719 or 254-4965.

**Les Femmes Magnifique**, a Paris extravaganza, is offering two-for-one on ticket prices for persons presenting a military identification card. The revue and package, which includes parking and two standard drinks is presently showing at the Hilton Hawaiian Village every night, except Monday, at 7:30 and 10:15 p.m.

The dinner shows, regularly \$29.95 per person are reduced to \$20 per person. The dinner show includes a seven course meal (hibachi steak and chicken) with seating beginning at 6 and 8:30 p.m.

Reservations are preferred and can be made by calling 947-1000.

# JUST DO IT CAR TINTING:



Any Car  
for Only

# \$98<sup>95</sup>

- All Legal colors available
- Reg. price \$135-\$175
- Please mention this AD when making your reservation to assure your Special Price!

**LEGAL AUTO GLASS**  
45-1021 Kam. Hwy., Kaneohe

**CALL TODAY!**  
**247-8595**

## YOUR SEWING MACHINE HEADQUARTERS

# 50% OFF

## Featuring: BERNINA

For the wife or mom during Football season... There isn't a better time to buy than Now!

- Features
- Monograms
  - Self-Adjusting Tension
  - Open Arm

5 Days Only  
Offer Expires Sun.  
11/15/5 p.m.  
Hurry! Limited Quantities



MODEL 800

- 25 yr. Exclusive Warranty
- Demo Model
- Buttonholes

NOW ONLY

Sug. Retail  
**\$650**

# \$325

**PACIFIC SURPLUS & DISTRIBUTORS**  
**CALL NOW 262-8131 1247-F Pali Hwy.**  
OPEN: Mon.-Sat. 10-6 pm, Wed. till 8 pm (1 block east of Castle Hospital in the 7-11 complex)  
Sundays 11-5 pm

## Holiday Inn HONOLULU AIRPORT

**Additional Conveniences:**  
Lei Maker's Garden Restaurant  
Kalama Lounge  
(with nightly entertainment)

TLA Approved  
Room & Car \$51<sup>95</sup> Per Day

## TLA SPECIAL "ROOM & CAR PACKAGE"

**Includes:**

- RENTAL CAR by Trans-lease Hawaii Rent-A-Car
- DELUXE, Spacious Rooms with:
  - Air Conditioning
  - FREE Color Television
  - Room Service Available
- FREE Parking, Baby-sitter Referral
- Hotel Laundromat
- Swimming Pool
- FREE 24-Hour Airport Shuttle Service
- Kennels
- CREDIT CARDS:
  - American Express
  - VISA, Bank Americard
  - Carte Blanche, Diner's Club & MasterCard
- Location on main bus line, convenient to all military installations, WAIKIKI, MAJOR ISLAND ATTRACTIONS AND AIRPORT.

**ROOM ONLY**  
**\$38<sup>00</sup>** Plus Tax  
per night

**For Reservations & Information Call:**  
**836-0661**

*Holiday Inn* AIRPORT

# SAFeway Where Everything's Right Including The Price

<b>Butterball Turkeys</b> Swift Best Self Basting  LB. <b>98¢</b>	<b>Chuck Roasts</b> Blade Cut Safeway Quality Beef  LB. <b>\$1.49</b>	<b>Whole Fryers</b> Patti Jean Frozen, Government Inspected  LB. <b>65¢</b>	<b>Charmin Bath Tissue</b> 4 Roll  <b>\$1.39</b>	<b>Large Eggs</b> Lucerne Grade A Mainland Shelltreated  Dozen <b>\$1.17</b>
<b>Pork Butts</b> From Lean Tender Porkers Frozen  LB. <b>\$1.09</b>	<b>Crossrib Roasts</b> Boneless Tender Safeway Quality Beef Pot or Oven Roasts  LB. <b>\$2.88</b>	<b>Ground Beef</b> Safeway's Regular Grind 3 lbs. or More Fresh Daily  LB. <b>\$1.49</b>	<b>Green Beans</b> Bel Air Frozen Cut or French Style 9 oz.  <b>59¢</b>	<b>Mayonnaise</b> NuMade 32 oz.  <b>\$1.49</b>
<b>Spareribs</b> Small Lean Sides 2/4 lb. Average  LB. <b>\$1.69</b>	<b>Pork Chops</b> Meaty Family Pack  LB. <b>\$1.89</b>		<b>Blue Bonnet</b> Margarine 1 lb.  <b>59¢</b>	<b>Paper Towels</b> Coronet Roll  2-PLY <b>73¢</b>
<b>RUBY GRAPEFRUIT</b> California 48 Size U.S. No. 1  <b>3 LBS. \$1</b> (Save 77¢)	<b>TOMATOES</b> U.S. No. 1  LB. <b>49¢</b> (Save 40¢)	<b>HEAD LETTUCE</b> Large Size Crisp U.S. No. 1  LB. <b>39¢</b> (Save 40¢)	<b>ANJOU PEARS</b> Northwest Grown U.S. No. 1  LB. <b>49¢</b> (Save 30¢)	<b>Calrose Rice</b> Town House 25 lbs.  <b>\$7.39</b>
				<b>Cranberry Juice</b> Ocean Spray Cocktail 48 oz.  <b>\$1.89</b>















**EXERCISE** Equipment Welder weights, plates, benches & accessories Call 395-1026.

**MINI TRAMPOLINES** from \$39-\$139 & 1 month FREE membership at Skinties, 955-5916.

**ROY'S LAWN MOWER REPAIR**  
"Free Estimate"  
Lawn mowers for sale  
Rotary 800, Reel \$125  
Guaranteed  
250-5927

**MARY KAY COSMETICS.** For re-orders & free facials. Call Yolanda 258-9021.

**BEST Video Library** in Hawaii! Sales, Service & Rentals. Video Center of Hawaii. Ph. 836-5050 or 261-2022.

**100 GALLON** Salt water aquarium complete. Call 624-5695 after 4 p.m.

**VACUUM Cleaners**, like new, with guar. \$19.95 & up 456-4211, 765 Kam Hwy.

**NEW FOOD CO-OP**  
Subscribe Now  
2 Locations  
261-6586, 235-2216

**YAMAHA PE-200** 2 channel mixer console w/4 inputs/4 out. Reverb, Wahwah, Tremolo, Volume, treble, midrange, bass for each channel like new, \$175 or offer. 254-5145.

**MAKE Xmas shopping easy!** You can save time & postage. Free Brochure. 238-8595

**GENTS** diamond ring 14K white gold w/1 full cut 22K diamond. Appraised at \$1300/best offer. 455-7641.

**6 SLIDING** glass doors w/greened \$75; 2" full covered wood doors \$20; 26" bike for parts \$101. 261-1254

**PING-PONG** table, 30, 10-sp. d. gls. bike, 545; Bundy oboe, \$200; Signet B-flat clarinet, \$225; 2 Soprano melodicas, \$25/ea. 254-3375 after 6 p.m.

**REPO KIRBY**  
Vacuum Cleaner  
complete attachments  
9 months old. Best offer  
Ph. 262-6584

**SURFLINE 6'4"** round pintail. Mint condition. Call Suzy. 235-5760

**TELEVISION** Zenith 23" console/color, \$200. Call 262-6052 after 5:30.

**BIKES** 16 & 20" boys' 16" w/chain, wheels, yellow/bk, excl. cond. \$60; 20" blue, 40. 395-4601 anytime.

**GOING TO Chicago** for the holidays? Take advantage of special group rates. Call Sharon 486-8673.

**SEARS** washer & dryer \$125 each, excl. cond. Call after 5 p.m. 839-8633

**2 PCS.** American Tourister luggage \$85 for both. Call 239-6090.

**WASHER \$130**, dryer \$109, will sell separately. Refrig. \$140, vacuum \$118. 262-0324.

**AIRPLANE** rides around Oahu \$35 for 3 people on a 1 hour flight. Call Clay or Gail 254-5090 AWH

**RUM Cakes** baked daily. Will deliver. Ph. 239-7070

**SCHILLER-APOLAN**  
Specialties Manufacturers for  
"We're happy to serve you"  
"BADGES"  
Quick Service  
239-7155

**15 FREEZER/refrig.** w/ice maker, Regina floor polisher w/attachments, Rayline hood w/fen/light, 100 sq. yards green carpet w/pd. Ph. 261-8995

**11 KIRBY VACUUM**, cost \$750, like new, must sell \$295. Ph. 455-5841, 923-7943

**PRIZE** Value \$999 wxp. 12/6, round trip to Tahiti + hotel 1/2 price. 395-3328 5-9 p.m.

**BY Popular demand**, Blooming Cattleya Orchid plants, \$5. Ph. 262-8641

**SCASH'S**  
★ GOLD  
★ SILVER  
★ DIAMONDS  
WINDWARD GOLD  
Kumihiko  
247-5450

**OAHU X-MAS IS NEAR!!**  
Heavy Duty  
TARPAULIN COVERLETS  
For boats, trucks, firewood  
construction, shade, wind-  
breaker, and WOULD YOU  
BELIEVE...ROOFS, TOO?  
12'x16' \$12.99 16'x20' \$19.99  
16'x24' \$24.99 20'x30' \$39.99  
24'x36' \$59.99  
As a promotion campaign in  
Hawaii, we will send any of the  
heavy duty tarps listed above to  
anyone who needs and responds  
to this announcement before  
midnight 10th Dec. Each tarp lot  
(12-16) is constructed of high-  
density fabric with tearproof  
freezerburn, flame, and  
electronically welded seams.  
Straps grommets (14, 16) are set  
continuously on each 3 feet  
centers around them for easy  
and secure the down. Corners  
are stitched with double fold  
triangular patches for heavier  
duty 100% water and weather  
proof non-melting tearproof  
highlights, available, and non-  
tearing repair. 100% money  
back guarantee if not satisfied.  
Auto 0% financing and handling  
for cash tarp orders. 1 unit of 80  
yards for each order. Please  
send appropriate cash post-  
marked letters 10th Dec. to:  
X-MAS, Inc., P.O. Box 100,  
Honolulu, L.A., CA 96808  
Check 750-8800, call for Dept.  
2024, Visa & MasterCard  
accepted.

**RUGS:** 1 blue; 1 green  
9x12 new; 100% decon  
pile. Call 261-8204

**SEARS AIR** conditioner,  
18,000 BTU, used 6 months,  
\$350. Ph. 254-2480

**BEDROOM** Set, game/dining  
table & chairs, coffee & end  
table, lamps, drapes, speakers,  
desk, sm. appliances, misc.  
Ph. 254-4245 after 5 p.m.

**CARPET:** 9x12 plush, tan,  
\$125; 12x15 dark brown, plush  
w/pad, \$250; 2-all wood  
headboards and footboards  
with frames \$50 each.  
Whirlpool electric dryer \$100.  
623-3544

**Alex Air Conditioning  
& Refrigeration**  
We pay cash for used/unwanted/  
broken air conditioners, refriger-  
tors & freezers. Sales, service &  
repairs on all makes & models of  
room air conditioners, refrigerators  
& freezers. Ph. 487-7479

**EASY Xmas** money, will pay  
10% ea. for old coconuts  
w/milk, will pick up anywhere  
on the island w/minimum of  
100. Ph. 261-1134, or drop off  
locations at Kaneohe District  
Park, Kailua District Park,  
Pearl City District Park, Aiea  
Haina Shopping Center, &  
Pillaiu Park, Waiwae, Sat.  
Nov. 14 & 28, 10 a.m.-1 p.m.

**WOOD Panels** 17'4" x 8" New  
Mountain Ash also 30'1" x 2"  
3/4" studs, \$150. Call 8 a.m. to  
noon 488-8312

**11,000 BTU** Air conditioner,  
Call Jim after 6 p.m. at 524-  
4864

**CONTACT LENS**  
30% OFF  
HARD LENS  
50% OFF  
PH. 456-2622

**REPO-2000** mini-copiers,  
\$68.95; Team Products, P.O.  
Box 1535, Wahiawa, HI 96786

**COMBINATION** Icebox/  
freezer, good shape, \$150. Gas  
pool heater, \$25. 247-3683

**78 VESPA** Grande  
Patio moped \$450.  
Call 422-5450.

**KIRBY Vacuum**, \$125, sliding  
lowered doors, 10-1/4" x 24"  
80"; 1-1/4" x 30" x 80". Ph. 235-  
1008.

**HOT Tub**, Triangular redwood &  
fiberglass w/heater pump &  
cover, best offer over \$700. Ph.  
237-8281.

**HANG** Glider, Cirrus 5-D,  
excellent condition. Best offer.  
Call 524-6560

**DAUGHTERS** of the Nile  
Bazaar, Nov. 14, St. Clements  
Church, Wilder Avenue, 9 to 4.  
Handicrafts, baked goods,  
clothes & misc.

**SIX** Covan overseas' con-  
tainers, 7 feet long x 7 feet high  
x 4 feet wide, \$175. Each. Ph.  
247-4276 anytime of day.

**EUROPEAN**  
Delicacies, the finest cakes  
and pastries. Holiday Specials:  
Buch Noel Croquebouché,  
Cream-filled Wreath Brandy  
Fruit Cake. Call 261-7059  
will deliver.

**WASHER \$140**, dryer \$115.  
Will sell separately; hand  
mower \$20. 262-0324 anytime

**9 CEMENT** laundry  
tubs \$15 each.  
Call 239-5021

**12 SLIDING** Patio doors,  
\$220; 8' SLIDING Patio doors  
\$135; dishwasher \$50; Louvers  
& hardware. 261-7560

**REALISTIC** car cassette  
player, w/2 flush mount  
speakers, never used \$50. 247-  
8434

**EXTENSION** ladder  
24 aluminum \$100  
Call 254-1078

**CAMERA** 35mm GAF L-CM  
with flash attachments & Prim  
close-up lens \$175. 262-8354

**GREEN** Recliner, 18 months  
old, \$100; 8 track car player  
\$20. Ph. 621-7457

**TELEPHONE** answering  
machine "Call Jotter" w/price  
Call 262-9291, 923-4445 Myers

**LAST** Chance to have a  
LINGERIE PARTY before  
Xmas. Invite your friends in for  
an evening of Xmas shopping.  
You receive present of lingerie  
to give or to keep. Call today!  
The Lingerie Shop. 944-3994

**VINYL** Repair kits, half price,  
invisible repairs, burns, tears,  
cuts, leathers, car tops, seats,  
furn. All colors, tools incld.,  
instructions. Ph. 262-9291 or  
923-4445 ask for Myers

**WASHER \$140**, dryer \$115.  
Will sell separately; hand  
mower \$20. 262-0324 anytime

**12 SLIDING** Patio doors,  
\$220; 8' SLIDING Patio doors  
\$135; dishwasher \$50; Louvers  
& hardware. 261-7560

**REALISTIC** car cassette  
player, w/2 flush mount  
speakers, never used \$50. 247-  
8434

**EXTENSION** ladder  
24 aluminum \$100  
Call 254-1078

**CAMERA** 35mm GAF L-CM  
with flash attachments & Prim  
close-up lens \$175. 262-8354

**GREEN** Recliner, 18 months  
old, \$100; 8 track car player  
\$20. Ph. 621-7457

**TELEPHONE** answering  
machine "Call Jotter" w/price  
Call 262-9291, 923-4445 Myers

**LAST** Chance to have a  
LINGERIE PARTY before  
Xmas. Invite your friends in for  
an evening of Xmas shopping.  
You receive present of lingerie  
to give or to keep. Call today!  
The Lingerie Shop. 944-3994

**VINYL** Repair kits, half price,  
invisible repairs, burns, tears,  
cuts, leathers, car tops, seats,  
furn. All colors, tools incld.,  
instructions. Ph. 262-9291 or  
923-4445 ask for Myers

**WASHER \$140**, dryer \$115.  
Will sell separately; hand  
mower \$20. 262-0324 anytime

**12 SLIDING** Patio doors,  
\$220; 8' SLIDING Patio doors  
\$135; dishwasher \$50; Louvers  
& hardware. 261-7560

**REALISTIC** car cassette  
player, w/2 flush mount  
speakers, never used \$50. 247-  
8434

**EXTENSION** ladder  
24 aluminum \$100  
Call 254-1078

**CAMERA** 35mm GAF L-CM  
with flash attachments & Prim  
close-up lens \$175. 262-8354

**GREEN** Recliner, 18 months  
old, \$100; 8 track car player  
\$20. Ph. 621-7457

**TELEPHONE** answering  
machine "Call Jotter" w/price  
Call 262-9291, 923-4445 Myers

**LAST** Chance to have a  
LINGERIE PARTY before  
Xmas. Invite your friends in for  
an evening of Xmas shopping.  
You receive present of lingerie  
to give or to keep. Call today!  
The Lingerie Shop. 944-3994

**VINYL** Repair kits, half price,  
invisible repairs, burns, tears,  
cuts, leathers, car tops, seats,  
furn. All colors, tools incld.,  
instructions. Ph. 262-9291 or  
923-4445 ask for Myers

**ECONOMICAL** Ground beef  
recipes: Salisbury steaks  
Swedish meatballs, mock filet  
mignon and 31 more. Only  
\$2.00 + 25¢ postage. Angel  
Books, P.O. Box 996 Dept.  
1028, Aiea, HI 96701

**HAKU** Leis, all types. Haku  
wedding cake top. Unique fruit  
baskets. 262-5718

**GREAT BUY:** Two VIP Life  
Time Memberships to The  
SPA for the price of one. Call  
Rick 823-7755.

**127 APPLIANCES**  
ELEC. Stove, refrigerator,  
washer, dryer, more. Ph. 538-  
8242, 941-5570.

**WHIRLPOOL** Dryer, 5 cycle, 3  
temperatures, 3 yrs. old, good  
cond. Ph. 261-9613, 538-  
8242.

**WESTINGHOUSE** Dryer, 5  
cycle, good cond. \$100/best  
offer. Ph. 455-1292.

**PRACTICALLY** New Sears 19  
cu. ft. frostless refrig./freezer  
white. \$450/best offer. Ph. 247-  
5380.

**Like New - Reconditioned  
Washers & Dryers**  
Available: 6 mos. lease or  
longer. \$1350 per mo.  
Includes full maintenance.  
847-1344

**PORTABLE** dishwasher  
Whirlpool \$175, washer/dryer  
set \$295, both excl. 623-1543

**FRIGIDAIRE** side-by-side  
refrig./freezer, 3 dr. almond, 2  
yrs. old, excl. cond. \$725. 254-  
2242

**RELIABLE** old washing  
machine cheap \$50. Call after  
5 p.m. 261-0631.

**REFRIGERATOR**, good  
working condition \$50.  
Call 671-6532

**DISHWASHER** \$50,  
washer & dryer \$150.  
Call 239-5854

**SEARS** Frostless refrig. 17 cu.  
ft., auto., ice maker, Almond  
color, 2 yrs. old, \$575 or offer.  
623-0870

**FREE:** Fluffy female kittens,  
8 weeks old, call  
395-6746, eves.

**FREE:** young female  
samyog to good home.  
Ph. 254-3285

**FREE:** 2 year old Beagle to a  
good home only. Call 735-  
2349

**FREE:** female part Basset  
and Hound, 1 yr.; spayed, gd. with  
kids. 488-3268 after 6 p.m.

**FREE:** 2 male pot puppies, 1  
white, 1 tan; 6 wks., mother, gd.  
watchdog. 422-8676

**FREE:** Sisi needs a new home,  
9 yr. old Cockapoo, is  
housebroken, has shots,  
needs lots of love. 624-4416

**FREE:** Female declawed  
spayed white cat. Needs loving  
home, approx. 2 yrs. old, very  
affectionate. 396-0185

**FREE:** 7 week old kittens,  
need good homes.  
Call 247-5075

**FREE:** Pit Bull pups, 10 weeks  
old, 3 females & 2 males, call  
247-1558

**FREE:** 1 small gray kitten w/4  
white paws, to good home.  
Call 423-2520

**FREE:** pot puppies, 7-8 weeks,  
Call after 5 p.m.  
235-8945

**FREE:** 8 wk. old, part  
pit/husky/poi puppy, adorable  
& healthy. Ph. 262-8371.

**FREE:** to good homes-pretty  
black kittens, weaned & box  
trained. 262-4263, 262-4325

**FREE:** Year old  
1/2 Beagle,  
Grace 254-2264 eves.

**FREE:** Part German Shepherd,  
5 months old.  
Call 235-4498

**FREE:** Puppies, 2 females,  
Call 625-2096

**FREE:** 2 affectionate 1/2 Persian  
old cats to loving home. No  
separation. 941-1586

**FREE:** 18 month Sep. mix, well  
behaved, obedience trained,  
spayed, Stevie after 4 p.m. 839-  
4823

**WANTED** to buy or trade  
old Baseball cards  
Call evenings 262-7945

**WANTED:** 2 used adult  
standard size bikes  
Call 261-1848

**WANTED:** Unserviceable  
HCA, Zenith & Motorola  
Quasar, Color TVs. 623-2326

**WE** Buy used  
furniture & beds.  
Call 623-7074

**\$55 CASH \$55**  
for used furniture - beds  
for Matt & wicker. 537-9181.

**CASH** for Lawn Mowers &  
Outdoor Motors.  
Any Condition  
Ph. 259-5927

**WE** BUY used furniture. We  
pay cash and pickup. Call 261-  
9492 or 261-1406

**144 MUSICAL SALES  
& SERVICE**  
BALDWIN Organ, w/fabulous  
fingers/rhythm/headphones  
bench. Excl. cond. \$1100  
477-5111.

**PEAVEY** TMT 100,  
\$300, Fender Champ, \$75.  
Ph. 262-6906

**UPRIGHT** piano  
\$150. Call 262-8587  
or 262-0831

**WURLITZER** Console Piano,  
excellent condition,  
\$899/best offer. 395-8092

**PIANO** - Yamaha excellent  
condition, \$1200.  
Call 254-2129

**FOR** sale 5 pc. Remo drum set;  
525-6666 7-4 p.m. Gary  
\$300/best offer. 422-8205

**WURLITZER** console Piano  
excellent condition  
\$899/best offer. 395-8092

**146 BOAT SUPPLIES  
& SERVICE**  
14' HOBBIE, save \$1000 over  
new price, like new. Ph. 261-  
6485.

**SEA** Spray 15' Catamaran  
w/aircraft multi-car lift  
almost new \$2500. 623-2382

**16' CHECKMATE** 150 horse  
Motor w/trailer, \$2500. Ph. 235-  
5768.

**SACRIFICE** Hobie 16 ft. fully  
rigged \$1500 or offer. Call Gary  
526-1711 days or 247-5152  
eves.

**14' LIDO** Sailboat  
w/trailer, \$1375.  
Ph. 262-7937

**15.5' LARSON** deep V/ski boat  
& trailer. New seats & carpet.  
Also 65 H.P. Mercury, needs  
work, incld., \$1500. Ph. 395-  
0794 between 6-9 p.m., or  
leave message on machine.

**Going to OREGON** to  
buy a new car or  
pickup?  
- contact -  
**ROBERTS & REDFIELD**  
PORTLAND  
Write for price lists and  
full information  
**ANY MAKE - ANY MODEL**  
Delivered - road tested at  
Portland International Airport  
**ROBERTS & REDFIELD**  
Suite #102  
6029 N.E. 82nd  
Portland, Oregon  
97220  
(503) 257-0551  
Conveniently located just  
3 minutes from Airport

**WE  
PAY  
MORE!  
MORE!  
MORE!**

**FOR CLEAN LATE  
MODEL CARS,  
VANS & TRUCKS  
AT**

**SHELLY**  
PH. 836-0466

**CORNER NIMITZ  
& LAGOON**

**UNDER  
THE HOOD**

**BY FRANK  
ABRAHAM**

Battery cables should be examined  
periodically for fraying or splitting. Note  
connections particularly.

Poorly matched, unevenly inflated  
tires may cause steering problems.  
Have alignment checked, too.

Sluggish car burning more gas? Spark  
timing should be checked and corrected.  
(Faulty timing may cause roughness,  
stalling, and overheating, too.)

Alternator should be checked every  
6,000 miles or so in average driving  
conditions.

To keep your car running at its best -  
and its safest - drive in to KAILUA  
TRANSMISSION. Our expert  
mechanics have the know-how you  
need.

Call Frank for prompt,  
thorough repair work.  
262-6514

Kailua at 1714 Hamakua Drive

**AKC** DOBERMAN Pinscher  
pups, black & rust with papers.  
456-4472 \$250

**5 MONTHS** Doberman \$75  
or offer.  
Call 235-4498

**AKC** Lhasa Apso champion  
fine, male pups beautiful Xmas  
gift. 235-1578

**PIT BULL/Bul Terrier** pups, 6  
weeks old \$50. Call after 5:30  
p.m. 825-0291







**COME OVER TO OUR SIDE**  
"We make it worth the trip"

See the **1982 Subaru**

Big Savings  
on Demos and  
'81 Models  
In Stock



Lease or Finance with A.C. Fin. For Military  
Immediate Delivery - All Colors To Choose

**WINDWARD SUBARU**

Factory Authorized Sales & Service  
737 Kailua Rd., Kailua 262-6576

**V  
W  
E  
E  
T  
E  
R  
A  
N  
D  
S  
★SPECIALS**

**Special**

**FACTORY  
PURCHASE!**

BRAND  
NEW 1980 FIAT SPIDER  
Convertible  
Automatic  
**\$2000  
DISCOUNTS**



OPEN  
DAILY 10  
9 PM  
SUNDAYS  
10 AM  
6 PM

9  
TO  
CHOOSE  
FROM

All Cars Subject To Prior Sale. All Prices are Plus Tax & License. Prices good thru Nov. 30 at 9:00 pm

**MIKE SALTA**  
Pontiac • Fiat • Lotus  
2545 North KUNITZ HIGHWAY ... PH. 262-2041

# CUTTER USED CARS

Prices Good November 11, 12, 13, 14 & 15, 1981.

<b>'75 FIREBIRD</b> V8 auto power steering/ brakes AM/FM cassette air cond bucket seats console vinyl roll body side moulding sport wheels white side wall tires (B06271) <b>\$2495</b>	<b>'78 COROLLA</b> 2 dr. 4 cyl. auto, bucket seats, radio, body side moulding, sport wheels, white side wall tires (ATB030) <b>\$3195</b>	<b>'72 DATSUN</b> 510 4 dr. 4 cyl. 4 spd., radio, bucket seats, body side moulding, white side wall tires (B0P599) <b>\$1595</b>	<b>'75 CAMARO</b> V8 auto, power steering/ brakes, air cond, bucket seats, console, body side moulding, sport wheels (B0P230) <b>\$1295</b>
<b>'66 MUSTANG</b> 3.9L V8 auto, power steering/brakes, radio, bucket seats, vinyl roll body side wall tires (B0P400) <b>\$1895</b>	<b>'73 240Z</b> 6 cyl. 4 spd., radio, gauges, bucket seats, console, body side moulding, mag. wide oval tires (A0D101) <b>\$2995</b>	<b>'78 MONTE CARLO</b> 2 dr. V6 auto, power steering/brakes, air cond, radio, power windows, vinyl roll body side moulding, sport wheels, white side wall tires (B0P401) <b>\$4095</b>	<b>'81 HONDA</b> Accord 3 dr. Hatchback 4 cyl. 5 spd., radio, bucket seats, console, body side moulding, sport wheels, white side wall tires only 2,173 mi. (B0F401) <b>\$5995</b>
<b>'79 REGAL</b> LTD 2 dr. auto power steering/brakes AM/FM cassette air cond power seats windows tilt wheel body side moulding white side wall tires (A0B01N) <b>\$5795</b>	<b>'73 NOVA</b> 2 dr. 4 cyl. auto, power steering/brakes, radio, body side moulding white side wall tires (B0P230) <b>\$1295</b>	<b>'78 CHEVETTE</b> 4 dr. Hatchback 4 cyl. auto power steering/brakes radio bucket seats console body side moulding white side wall tires (B0P401) <b>\$2395</b>	<b>'77 SUBARU SUPREME</b> 4 dr. V6 auto, power steering/brakes, air cond, radio, power windows, tilt wheel, body side moulding white side wall tires (B0P230) <b>\$3495</b>

ALL CARS SOLD AS IS PLUS TAX & LIC.  
8855 N. NIMITZ PH. 836-0828

## Pre-Holiday Sale

Wrap up your

Christmas shopping early with a  
**Super Bicycle Bargain!**

C  
A  
T  
A  
L  
I  
N  
A

**10 SPEEDS  
3 SPEED CRUISERS  
SINGLE SPEED CRUISERS**  
Red, Blue, Silver, Black  
ALL SIZES - WHILE SUPPLIES LAST



ONLY **\$145.00**

plus tax

**DOMENICO'S  
Kailua Yamaha**

Hawaii's finest motorcycles, parts & service

776 Kailua Road, Kailua, HI 261-3305

## THE '82s ARE IN!!! GET A BARGAIN ON USED HONDA TRADE-INS

<b>'77 ACCORD</b> Automatic ADE383 <b>\$4895</b>	<b>'77 ACCORD</b> Air Condition ARP909 <b>\$4895</b>	<b>'78 HONDA ACCORD</b> Air cond. low miles. ARP903 <b>\$4495</b>
<b>'80 HONDA ACCORD</b> Low miles. BAY274 <b>\$5995</b>	<b>'79 HONDA CIVIC</b> Low mileage. AGA180 <b>\$4395</b>	<b>'77 HONDA ACCORD</b> APT000 <b>\$4795</b>

CALL DON LUCAS HONDA

247-8544

45-671 Kam Hwy.  
Kaneohe, Hawaii

**Don Lucas**  
HONDA

All units subject to prior sale

**1982's**



Celica GT Sport Coupe

The 1982 GT Sport  
Coupe, the most  
affordable Celica  
of all, is a beautiful  
balance of per-  
formance, fuel  
efficiency, com-  
fort and con-  
veniences.

\*See Your Dealer

**COME IN AND SEE US TODAY!**  
**WAIPAHU TOYOTA**  
A DIVISION OF **PACIFIC INC.** 677-3161

PRESENT THIS  
COUPON FOR A FREE  
ESTIMATE ON A TRADE-IN.  
NO OBLIGATION.  
Good Till Nov. 25, 1981.



Corolla Tercel 4 Door Deluxe Sedan

It's a car that gives you good value for  
your dollar, designed and engineered  
for maximum reliability, one that's built  
to last.

## Pick Your Lucky Star at SHELLY CARS

<b>'74 JUDGE</b> Custom 1980 auto, power steering/brakes radio, bucket seats, vinyl roll body side wall tires (B0P230) <b>\$1395</b>	<b>'77 GRANADA</b> Hatchback 4 cyl. 5 spd. radio new tires (B0P230) You call! (B0P182) <b>\$1995</b>	<b>'77 ODGE</b> Aspen 3 dr. auto 2.5L 4 cyl. auto 2.5L 4 cyl. auto side trim, saddle color air conditioning (B0P230) <b>\$1395</b>
<b>'77 ALFA ROMEO</b> Spider convertible 5 spd. radio mag. radio, bucket seats new engine (B0P230) GORGEOUS CAR! (AY2200) <b>\$6495</b>	<b>'77 PINTO</b> Hatchback 4 cyl. auto new tires radio air cond. great shape radio and new tires (B0P230) CALL NOW (B0P230) <b>\$1395</b>	<b>'77 PINTO</b> Hatchback 4 cyl. auto new tires radio air cond. great shape radio and new tires (B0P230) CALL NOW (B0P230) <b>\$995</b>
<b>'77 ACCORD</b> 2.0L auto 4 cyl. radio bucket seats new tires (B0P230) Compare to new test drive today! (B0P230) <b>SAVE</b>	<b>'77 PINTO</b> Hatchback 4 cyl. auto new tires radio air cond. great shape radio and new tires (B0P230) CALL NOW (B0P230) <b>\$995</b>	<b>'77 PINTO</b> Hatchback 4 cyl. auto new tires radio air cond. great shape radio and new tires (B0P230) CALL NOW (B0P230) <b>\$995</b>

BUY FROM THE "EXPERTS"  
FREE SHIPMENT TO OUTER ISLANDS  
Corner of Nimitz and Lagoon Open till 9 P.M.

## SUBARU

The car that tabbed "Mercedes of the Orient"

## BRAND NEW '81 SUBARU

OL 4 Door Sedan, 5 Speed

**5 to choose from**  
For the best deal in town



Joe Alpa



Jim Hunsinger

See us!!



Dennis Yamamoto

Now  
for just  
**\$5389**

plus tax & lic.

Before you buy any car, check out our deal  
Sale ends Nov. 21, 1981

**SUBARU KAIMUKI**  
3361 Wai'alae Ave. Ph. 735-2848  
(Between 7th and 8th Ave.)

**WINDWARD TOYOTA**  
HAS IT ...

**1982 TOYOTA  
CELICA LIFTBACK**



**High Style, High Efficiency!**

Come In To See All Our '82's.

Financing Available with Approved  
Credit, Including Military Financing.



Marj Allison

Me and my  
dog Spot  
would like all  
Military  
Personnel to  
bring in this



Spot

coupon and receive \$200.00 to use  
towards a down payment on any  
new or used car from:

OVER 60 USED CARS  
TO CHOOSE  
FROM

**ALA MOANA  
VOLKSWAGEN**



IN HAWAII SINCE 1957  
800 ALA MOANA BOULEVARD  
(1 BLOCK EWA OF WARD WHSE.)

537-3386

**'73 OPEL**  
4 dr. auto. Excellent  
transportation car. AGF708  
**\$1088**

**'78 HONDA CIVIC**  
3 dr. Hatchback, 4 spd.,  
REAL ECONOMY! AAJ188  
**\$2688**

**'71 DATSUN  
PICKUP**  
Shortbed, 4 spd., step  
bumper, AEJ174  
**\$1688**

**'78 PLYMOUTH  
VALIANT**  
6 cyl. auto. air BRJ735  
**\$1695**

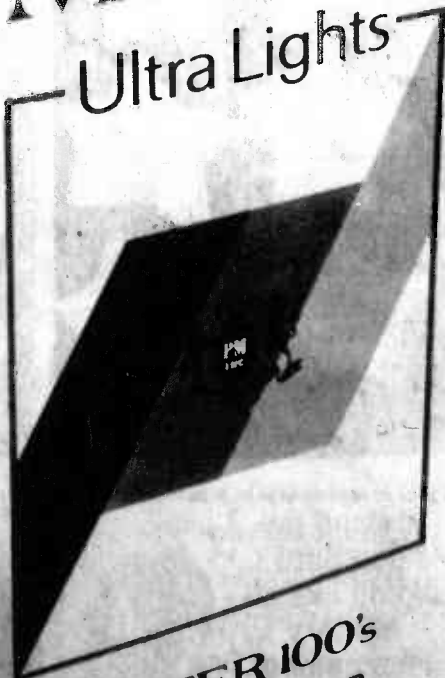


# Ultra Lights New 100's!



**MERIT**  
Ultra Lights

**Only  
5 mg  
tar**



**FILTER 100's**  
ULTRA LOW TAR

**Only one  
ultra light 100's  
gives you the Merit  
taste idea.**

**MERIT**  
**Ultra Lights**  
Regular & Menthol

Warning: The Surgeon General Has Determined  
That Cigarette Smoking Is Dangerous to Your Health.

© Philip Morris Inc. 1981

5 mg "tar," 0.5 mg nicotine  
av. per cigarette by FTC method