

HAWAII MARINE

Voluntary payment for delivery to MCAS housing/\$1 per four week period.

VOL. 10 NO. 41

KANEOHE BAY, HAWAII, OCT. 14, 1981

EIGHTEEN PAGES

Pass in Review

Women assigned to ships

WASHINGTON — In a recent message to Fleet Commanders, the Navy announced its plan for the assignment of women to ships during Fiscal Year 1982. The plan calls for the assignment of 78 women officers, primarily as replacement for women officers rotating ashore, and the addition of 824 enlisted women.

By the end of FY-81, there will be 161 women officers and 1,895 enlisted women on sea duty. By the end of FY-82, 169 women officers will be serving on board 31 ships with 2,719 enlisted women serving on 22 of those same ships.

Ships to receive enlisted women for the first time include the USS Hector, USS Yosemite, USS Prairie, USS Sierra and the USS Cape Cod. The Cape Cod and USNS Harkness are new additions to the program for women officers. The USS Samuel Gompers, USS Simon Lake and USS Jason already have women on board and are scheduled to have a second increment of women assigned.

Sergeant scores released

HQMC, WASHINGTON — Quotas and cutting scores needed for promotion to sergeant during October have been released by manpower officials here.

A total of 1,662 promotions have been approved. The number of promotions and cutting scores, by Occupational Fields are:

OF	QUOTA	SCORE
01	57	1703
02	10	1560
03	409	1635
04	26	1634
06	88	1639
11	22	1675
13	96	1639
14	3	1683
15	3	1635
18	47	1622
21	73	1603
12	20	1634
25	67	1687
26	37	1632
28	64	1597
30	55	1697
31	4	1688
33	17	1659
34	10	1696
35	59	1707
40	17	1706
43	8	1586
44	4	1676
46	5	1701
56	9	1628
57	4	1564
58	21	1708
59	58	1604
60	119	1673
61	79	1670
63	68	1645
64	37	1663
65	17	1657
68	3	1655
70	17	1706
72	25	1633
73	4	1693

According to officials here, no composite scores for OF 41 were submitted.

1982 promotions announced

HQMC, WASHINGTON — Allocations for the Calendar Year 1982 Staff Sergeant Selection Board have been released by officials here.

The board is scheduled to convene in the middle of January, and is authorized to select 3,971 staff sergeants (not including career recruiters).

The allocations for career recruiters will be announced prior to the board's convening date and will be equal to the number of career recruiters in the promotion zone.

Promotion allocations for staff sergeant, by occupational field, are:

OF	ALLOCATIONS
01	303
02	102
03	325
04	71
06	96
11	58
13	213
14	10
15	12
16	82
18	37
21	37
23	202
25	76
26	145
28	380
30	40
31	80
33	58
34	247
35	80
40	23
41	16
43	21
44	30
46	16
55	13
57	144
58	108
59	327
60	200
61	168
63	118
64	16
65	14
68	30
70	25
72	32
73	

Sailors salute Navy history

With "Auld Lang Syne" and "Anchors Aweigh" playing malifluously in the background, sailors and Marines of the 1st Marine Brigade and Marine Corps Air Station, Kaneohe Bay observed the cutting of the traditional birthday cake in celebration of the U.S. Navy's 206th birthday.

Three sailors and one Marine will remember today for another reason besides the Navy's 206th year, as they received medals from the Secretary of the Navy, presented by 1st Marine Brigade Commanding General, Brigadier General Bain McClintock.

Lieutenant Commander James Judkins, of the Navy's Dental Corps, received the Navy Commendation Medal for his meritorious service as the Assistant Dental Officer aboard the USS Jason. Hospital Corpsman First Class Robert Harris was also awarded the Navy Commendation Medal for his outstanding service with Marine

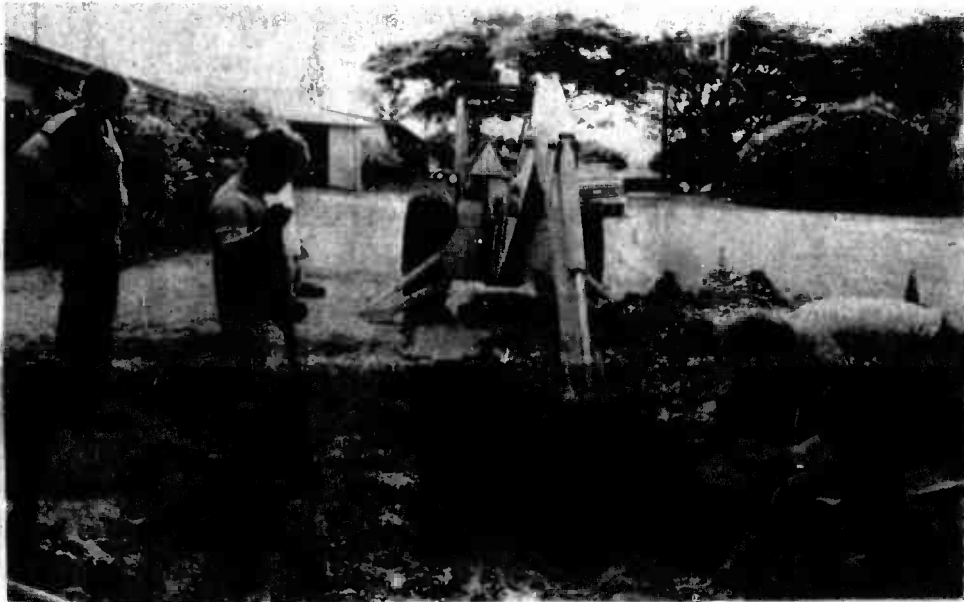
Medium Helicopter Squadron-165 Marine Aircraft Group-24. Next was Chief Storekeeper Dominador Cuevas receiving the Navy Achievement Medal for his superior performance of duty as Storage Branch Supervisor for the Station's Supply Department. Marine Captain Michael Howard then received the Navy Achievement Medal for his exemplary actions as the 1st Marine Brigade Joint Education Officer.

With the reading of the birthday messages from the Secretary of the Navy and the 1st Marine Brigade Commanding General, and the oldest and youngest sailor being presented the traditional pieces of cake, the ceremony drew to a close. As the jubilation of the Navy's 206 years in existence was on everyone's mind, all were given a reminder of the shocking reality of the present... as the ceremony began with the lowering of the U.S. flag to half-mast in honor of the memory of the late Egyptian President, Anwar Sedat.



Photo by Sgt Pepper Davis

TRADITIONAL INCISION — Captain Frederick Kavanaugh, Brigade Surgeon, cuts the customary first piece of cake in observance of the Navy's 206th Anniversary. Senior cake escorts Master Chief Petty Officer Joe Phillips, Kaneohe Branch Clinic Administrative Chief (left) and Hospitalman Second Class David Vega, Headquarters Company, 1st Marine Brigade (front right) wait to assist. Father John Newton, Senior Station Chaplain (rear right) was the oldest sailor to attend the ceremony held Friday in front of the flag pole.



LOOKING FOR GOLD? — Repairmen of Maintenance Division, Facilities Department, burrow into the ground to reach a broken water main in family housing. Residents of Blain Street were without water Tuesday as the workers spent the day repairing the leak. According to Foreman Francis Steele the main pipe had deteriorated and ruptured.

Photo by Sgt Pepper Davis

Budget balancer

New policy narrows military unemployment pay eligibility

by Mary Wisher

TRIPLER ARMY MEDICAL CENTER, Hawaii — Military members who voluntarily leave the service are no longer eligible for unemployment benefits, according to Robert T. Ogawa, district administrator for U.S. Congressman Daniel T. Akaka.

The plan is part of President Reagan's attempt to balance the federal budget by 1984.

THE OMNIBUS BUDGET Reconciliation Act of 1981 was ratified Aug. 13 as a new law governing unemployment insurance benefits for military personnel.

Shoji Sakamoto, program chief for the Hawaii State Department of Labor, said that the change in the old policy chaps off unemployment payments for all military people who voluntarily leave the service, who are dishonorably discharged or who fail to reenlist when they could have done so.

Sakamoto said the compensation eligibility is based along the same guidelines as that of civilians where the criteria for unemployment privileges are considered on voluntary choice of the individual to remain or not remain in an job.

Nevertheless, Ogawa said that the law is being equated to two situations that may be similar, but not identical.

"THE MAIN DIFFERENCE

in the whole thing is how the term 'voluntary' is being used," Ogawa said, "and the meaning does not apply equally to the military and the private sector.

"About the only comparable situation that I can see is where a guy fulfills a contract and it expires. If he is offered another contract with the company and refuses, then he is not eligible for unemployment," Ogawa said.

Ogawa went on to say that the law didn't specifically exclude civilians who are working on a contract basis from these benefits. But the Department of Labor

determined whether the individual qualified. With the military, the decision is considered on a "cut and dry" rule according to the new policy.

"THE ONLY WAY THAT A service member is able to qualify for unemployment is if he or she didn't have a choice to re-up," Sakamoto explained, "and the discharge has to be under honorable conditions."

In reference to the old unemployment insurance policy, military personnel who were separated under honorable conditions after spending one

year in the service were entitled to unemployment benefits providing that he or she met unemployment qualifications.

Sakamoto stated that the new policy stresses that even if a member does have time in service, if he or she resigns on their own accord, they will not be able to establish a claim for payment.

EVEN THOUGH THE unemployment insurance cut off date for service personnel was July 1, unemployment benefits were paid up to Aug. 15 since the change did not go into effect until the day after that.

Marine band presents concert

sioned officers to get up in front of the band to conduct. It's a part of our training," he said, continuing, "we do it to see how they handle themselves in front of an audience and in front of the band."

Marines must audition to earn a seat in this elite band. To audition, however, musicians must have at least five years experience, according to GySgt Harris. This experience may be gained in college, high school and even as far back as grade school. "A few of our musicians have degrees and some even have teaching credentials in music," explained GySgt Harris.

In addition to their civilian musical training, members of the band also attend the Armed Forces School of Music in Little

Creek, Va. The school offers six-month basic and refresher courses and a nine-month course for advanced musicians.

"Most musicians within the organization can double on other instruments," said GySgt Harris. "We might have someone who plays the clarinet and can double on the sax. Trombone players double on other percussion instruments and tuba players are required to be able to play the electric base." This doubling up on instruments allow for last-minute changes in case of emergencies, according to GySgt Harris.

"It's the first time in quite a while that we've put on a concert at Kaneohe," said GySgt Harris. "The one-hour program is free and will have a little bit of something for everybody."

Salutes

EDITOR'S NOTE: Salutes is designed to recognize individuals for their achievements and exceptional performance of duty as well as to welcome new arrivals to Hawaii.

The information contained herein is compiled from Fleet Home Town News releases submitted to the Joint Public Affairs Office by unit information officers.

H&HS

Welcome Aboard:
Sgt E.O. Flores
LCpl D.E. Schworchert

Promotion:
MSgt G.A. Henry Jr.
Sgt J.M. Gannon
Sgt R.P. Hullinger
Sgt C.C. Meyer
Sgt J. Rosas

Meritorious Mast:
Cpl L.D. Crottsley

Letter of Appreciation:
Sgt F.A. Harris
Cpl R.L. Fortenberry
LCpl R.E. Haselkamp
LCpl R.J. Kravabloski

NCO of Month:
Cpl E.E. Delacruz

Marine of Month:
LCpl J.R. Crottsley

Service School Graduate:
SSgt D.E. Mays

Reenlistment:
Cpl J.E. Sword

1/3
Promotion:
Cpl D.G. Alexander
Cpl M.L. Bacon
Cpl M.D. Burgess
Cpl K.F. Burke
Cpl W.S. Carson Jr.
Cpl P.W. Costea
Cpl P.E. Deans
Cpl B.J. Fanton
Cpl B.S. Forster

Cpl R.E. Inzana
Cpl B. Jeancharles
Cpl L.P. Jemola
Cpl E. Johnson
Cpl L.L. Law
Cpl T.B. McCleary
Cpl D. McPherson
Cpl R.J. Merza
Cpl J.A. Murphy
Cpl J.A. Pagan
Cpl P.L. Phelps
Cpl P.A. Powell
Cpl R. Rivera
Cpl I.S. Save
Cpl C.C. Thomas
Cpl D.A. Verdeckberg
Cpl A. Watkins III
LCpl D.W. Baker
LCpl D.G. Black
LCpl C.C. Combs
LCpl G.C. Defoe
LCpl K.L. Dexter
LCpl E. Diaz
LCpl M.L. Duckett
LCpl P. Escajeda Jr.
LCpl E.L. Ferguson
LCpl D.L. Gladwell
LCpl R.D. Graber
LCpl K.E. Gray
LCpl F.D. Griffin
LCpl R.A. Hamm
LCpl T.L. Harper
LCpl A.L. Johnson
LCpl J.L. Jones Jr.
LCpl B.C. Kunkel
LCpl G. Lefebvre
LCpl A.M. Lipetri
LCpl R.S. Martin
LCpl R.G. Morgan
LCpl M.K. Norman
LCpl J.R. Richerson
LCpl R.W. Robertshaw
LCpl B.P. Ronan
LCpl J.A. Simpson
LCpl J. Soto
LCpl J.R. Woodruff
PFC J.L. Adames
PFC B.S. Anderson
PFC R.V. Brandon
PFC R.D. Brown
PFC J.O. Buford
PFC G.D. Bunnell
PFC R.J. Caron
PFC J.M. Dankawich
PFC J.A. Deureling
PFC M.J. Dunn

PFC K.S. Finn
PFC G.P. Galvez
PFC R.S. Garry
PFC E.M. Giordano
PFC R. Gandealfonso
PFC J.E. Harmon III
PFC C.E. Lopez Jr.
PFC H.G. March Jr.
PFC E.M. Moriarty Jr.
PFC G.A. Murray
PFC D.S. Price
PFC J.H. Reinhardt
PFC S.E. Robinson
PFC A.P. Rossano
PFC E.F. Sharpe
PFC T.A. Sorgius
PFC J.J. Todd
PFC J.T. Watts
PFC G.R. Wickman
PFC C.A. Wolfe
PFC P.R. Zuria

2/3
Promotion:
Sgt P.L. Brown
Sgt R.W. Funk
Sgt J.F. Hutchings
Sgt D.G. Melgosa
Sgt K.D. Naeb
Sgt G.D. Smith
Cpl M.J. Finley
Cpl J.M. Fyffe
Cpl M.A. Lovejoy
Cpl J.C. Malone
Cpl G.R. McMann
Cpl R.L. Neale
Cpl C.D. Ritter
Cpl R.T. Ross
Cpl B.S. Waterhouse
Cpl M.S. Weatherly
LCpl A.R. Boell
LCpl D.R. Box
LCpl M.E. Davis
LCpl M.A. Flores
LCpl M.A. Houser
LCpl J.S. Kelchner
LCpl B.R. Little
LCpl J.R. Machinsky
LCpl A. Maldonado
LCpl A. Malone
LCpl K.M. McKenn
LCpl J.J. McPhail
LCpl J.A. Muriel
LCpl J.C. Smith
LCpl L. Stringer

3daABn
Welcome Aboard:
LCpl T.A. Aguigui
LCpl M.L. Fetter
PFC F.W. Muldowney

Meritorious Mast:
Pvt J. Drozd

Reenlistment:
Sgt P.L. Brown
Sgt R.W. Funk
Sgt J.F. Hutchings
Sgt D.G. Melgosa
Sgt K.D. Naeb
Cpl N. Mercado
Cpl D.W. Padgett
Cpl T.J. Porter
Cpl C.D. Ritter

1/12
Welcome Aboard:
GySgt M.L. Richardson
Sgt J. Johnson
Cpl S.O. Williams
LCpl R.L. Case
LCpl E. Deas III
LCpl C.L. Elkins
PFC F.C. Ancheta
PFC D.A. Brass
PFC A.J. Husby
PFC S.D. Murphy
Pvt J. Drozd

3daABn
Welcome Aboard:
LCpl T.A. Aguigui
LCpl M.L. Fetter
PFC F.W. Muldowney

Meritorious Mast:
Pvt J. Drozd

Sgt R.L. Miller
Cpl G.K. Hiler
Cpl A.M. Labruyere
Cpl C.J. Renner
LCpl L.A. Ewing
Service School Graduate:
WO-1 D.M. Moser

BSSG
Promotion:
LCpl K.E. Foley
LCpl C.E. Higgins
LCpl G.H. Peter
LCpl J.R. Shaw
LCpl M.P. Taliaferro
LCpl N. Whitley
PFC E.F. Jacquay
PFC S.A. Kellison
Meritorious Mast:
LCpl W. Otero Jr.

H&MS-24
Meritorious Mast:
Cpl R.E. Driemeyer
Good Conduct:
Sgt T.M. Harbin
Reenlistment:
Sgt D.L. Detzel
Sgt M. Holstein
Cpl D.E. Goelz

LCpl K.B. Herndon
MACS-2
Welcome Aboard:
MSgt H.C. Fields
LCpl V.C. Alvarado
LCpl M.E. Triesky
LCpl J.E. Tucker
NCO of Month:
Sgt S.R. Sightler
Good Conduct:
Cpl S.D. Croy
Cpl J.R. Gifford

VMFA-235
Welcome Aboard:
SSgt E. Marlatt
Sgt G. Catterton
Sgt K. Elliot
Sgt T. Romano
Sgt R. Stillwell
Cpl M. Trickett
Cpl J. Adams
LCpl S. Giarrizzo
LCpl D. Page
LCpl G. Tulley
LCpl M. Weeks
LCpl J. Winter

LCpl J. Woolston
PFC M. Bowlin
PFC R. Dulvalle
HMM-262
Promotion:
Maj Hughes
Capt Cooney
Capt Kinnear
Capt Weitekamp
Sgt S.D. Abraham
Sgt Bixby
Sgt King
Sgt Long
Sgt McCarthy
Sgt G.W. Smith
Cpl Crawford
Cpl Dorn
Cpl Doyle
Cpl Guajardo
Cpl Hahn
Cpl Hoelker
Cpl Hose III
Cpl Joiner
Cpl N. Lewis
Cpl McGee
Cpl Seely
Cpl Talavera

LCpl J. Woolston
PFC M. Bowlin
PFC R. Dulvalle
HMM-262
Promotion:
Maj Hughes
Capt Cooney
Capt Kinnear
Capt Weitekamp
Sgt S.D. Abraham
Sgt Bixby
Sgt King
Sgt Long
Sgt McCarthy
Sgt G.W. Smith
Cpl Crawford
Cpl Dorn
Cpl Doyle
Cpl Guajardo
Cpl Hahn
Cpl Hoelker
Cpl Hose III
Cpl Joiner
Cpl N. Lewis
Cpl McGee
Cpl Seely
Cpl Talavera

LCpl J. Woolston
PFC M. Bowlin
PFC R. Dulvalle
HMM-262
Promotion:
Maj Hughes
Capt Cooney
Capt Kinnear
Capt Weitekamp
Sgt S.D. Abraham
Sgt Bixby
Sgt King
Sgt Long
Sgt McCarthy
Sgt G.W. Smith
Cpl Crawford
Cpl Dorn
Cpl Doyle
Cpl Guajardo
Cpl Hahn
Cpl Hoelker
Cpl Hose III
Cpl Joiner
Cpl N. Lewis
Cpl McGee
Cpl Seely
Cpl Talavera

LCpl J. Woolston
PFC M. Bowlin
PFC R. Dulvalle
HMM-262
Promotion:
Maj Hughes
Capt Cooney
Capt Kinnear
Capt Weitekamp
Sgt S.D. Abraham
Sgt Bixby
Sgt King
Sgt Long
Sgt McCarthy
Sgt G.W. Smith
Cpl Crawford
Cpl Dorn
Cpl Doyle
Cpl Guajardo
Cpl Hahn
Cpl Hoelker
Cpl Hose III
Cpl Joiner
Cpl N. Lewis
Cpl McGee
Cpl Seely
Cpl Talavera

Cpl Zastrow
LCpl M.D. Abraham
LCpl Degraw
LCpl Loneman
Meritorious Mast:
SSgt Koss
Sgt Knapp
Cpl Bixby
Cpl Fermin
Cpl Seely
Cpl Talavera
LCpl Ehrensbeck
LCpl McMicheaux
LCpl Tucur
Good Conduct:
Sgt S.D. Abraham
Sgt Buttelmann
Sgt Fleming
Sgt Tyler
Sgt Schlichter
Cpl Allen
Cpl Bixby
Cpl Burnett
Cpl D.C. Collins
Cpl Darnes
Cpl Delaney
Cpl Derry
Cpl Dressler

Cpl Zastrow
LCpl M.D. Abraham
LCpl Degraw
LCpl Loneman
Meritorious Mast:
SSgt Koss
Sgt Knapp
Cpl Bixby
Cpl Fermin
Cpl Seely
Cpl Talavera
LCpl Ehrensbeck
LCpl McMicheaux
LCpl Tucur
Good Conduct:
Sgt S.D. Abraham
Sgt Buttelmann
Sgt Fleming
Sgt Tyler
Sgt Schlichter
Cpl Allen
Cpl Bixby
Cpl Burnett
Cpl D.C. Collins
Cpl Darnes
Cpl Delaney
Cpl Derry
Cpl Dressler

Cpl Zastrow
LCpl M.D. Abraham
LCpl Degraw
LCpl Loneman
Meritorious Mast:
SSgt Koss
Sgt Knapp
Cpl Bixby
Cpl Fermin
Cpl Seely
Cpl Talavera
LCpl Ehrensbeck
LCpl McMicheaux
LCpl Tucur
Good Conduct:
Sgt S.D. Abraham
Sgt Buttelmann
Sgt Fleming
Sgt Tyler
Sgt Schlichter
Cpl Allen
Cpl Bixby
Cpl Burnett
Cpl D.C. Collins
Cpl Darnes
Cpl Delaney
Cpl Derry
Cpl Dressler

Cpl Zastrow
LCpl M.D. Abraham
LCpl Degraw
LCpl Loneman
Meritorious Mast:
SSgt Koss
Sgt Knapp
Cpl Bixby
Cpl Fermin
Cpl Seely
Cpl Talavera
LCpl Ehrensbeck
LCpl McMicheaux
LCpl Tucur
Good Conduct:
Sgt S.D. Abraham
Sgt Buttelmann
Sgt Fleming
Sgt Tyler
Sgt Schlichter
Cpl Allen
Cpl Bixby
Cpl Burnett
Cpl D.C. Collins
Cpl Darnes
Cpl Delaney
Cpl Derry
Cpl Dressler


Cpl Featherston
Cpl Fermin
Cpl Fredricson
Cpl Frodi
Cpl Gauthreaux II
Cpl Gifford
Cpl C.L. Johnson
Cpl S.M. Johnson
Cpl Kilpatrick
Cpl Landeros
Cpl Maples
Cpl Pendley
Cpl Phillips
Cpl Revolt
Cpl Rohm
Cpl Runnels
Cpl Siracuse
Cpl Valasquez
Cpl Wick
Cpl Young
LCpl Albert
LCpl Cain
LCpl Sanchez
Aircrewman of Year:
Sgt W.M. Cowan
Aircrewman of Month:
Cpl O.G. Adley

Cpl Featherston
Cpl Fermin
Cpl Fredricson
Cpl Frodi
Cpl Gauthreaux II
Cpl Gifford
Cpl C.L. Johnson
Cpl S.M. Johnson
Cpl Kilpatrick
Cpl Landeros
Cpl Maples
Cpl Pendley
Cpl Phillips
Cpl Revolt
Cpl Rohm
Cpl Runnels
Cpl Siracuse
Cpl Valasquez
Cpl Wick
Cpl Young
LCpl Albert
LCpl Cain
LCpl Sanchez
Aircrewman of Year:
Sgt W.M. Cowan
Aircrewman of Month:
Cpl O.G. Adley

Cpl Featherston
Cpl Fermin
Cpl Fredricson
Cpl Frodi
Cpl Gauthreaux II
Cpl Gifford
Cpl C.L. Johnson
Cpl S.M. Johnson
Cpl Kilpatrick
Cpl Landeros
Cpl Maples
Cpl Pendley
Cpl Phillips
Cpl Revolt
Cpl Rohm
Cpl Runnels
Cpl Siracuse
Cpl Valasquez
Cpl Wick
Cpl Young
LCpl Albert
LCpl Cain
LCpl Sanchez
Aircrewman of Year:
Sgt W.M. Cowan
Aircrewman of Month:
Cpl O.G. Adley

Cpl Featherston
Cpl Fermin
Cpl Fredricson
Cpl Frodi
Cpl Gauthreaux II
Cpl Gifford
Cpl C.L. Johnson
Cpl S.M. Johnson
Cpl Kilpatrick
Cpl Landeros
Cpl Maples
Cpl Pendley
Cpl Phillips
Cpl Revolt
Cpl Rohm
Cpl Runnels
Cpl Siracuse
Cpl Valasquez
Cpl Wick
Cpl Young
LCpl Albert
LCpl Cain
LCpl Sanchez
Aircrewman of Year:
Sgt W.M. Cowan
Aircrewman of Month:
Cpl O.G. Adley

CLIP AND SAVE



FREE SPINAL EXAMINATION
Danger Signals of Pinched Nerves:

1. Headaches, Dizziness, Blurred Vision
2. Neck Pain, Tight Muscles, Spasms
3. Shoulder Pain, Pain Down Arms, Numbness in Hands
4. Pain Between Shoulders, Difficult Breathing, Abdominal Pains
5. Lower Back Pain, Hip Pain, Pain Down Legs

Why FREE? Thousands of area residents have spine-related problems which usually respond to chiropractic care. This is our way of encouraging you to find out if you have a problem that could be helped by chiropractic care. It is also our way of acquainting you with our staff and facilities. Examination includes a minimum of 10 standard tests for evaluating the spine and a contour analysis photo as shown above. While we are accepting new patients, no one need feel any obligation. Most Insurance Accepted.

Pacific Chiropractic
DAVID L. HALPAIN, D.C. JEANNE C. HALPAIN, D.C.
WREXMO BLDG., RD. 207 PHONE 261-0831
802 KAIKUA ROAD

7-ELEVEN SAVES YOU MONEY WHERE YOU SAVE TIME

COLD BEER \$8.99
at Super Low CASE Prices

LOWENBRAU \$12.99
24 12 oz. Bottles

MICKEYS BIG MOUTH \$10.99
24 12 oz. Green Barrel Bottles

BUDWEISER \$10.99
24 12 oz. Bottles

EVERYDAY LOW PRICES

CIGARETTES ALL BRANDS

\$6.49
Only CARTON

EVERYDAY LOW PRICE

ICE COLD SOFT DRINKS
Mix or match any combination you desire.

\$8.99
CASE

EVERYDAY LOW PRICE
Including Lipton Ice Tea

THE DAIRY STORE

MILK 1/2 Gal. \$1.65

EVERYDAY LOW PRICE

BIG DEAL ON BIG GULP

32 Ice Cold Fluid Ounces

49¢

Assorted Flavors

7-ELEVEN

OPEN HOUSE

E-X-P-RESS SPECIAL!

3 FOR 1 MEMBERSHIP AT ALL 4 LOCATIONS

To celebrate the expansion of our 5th company, we'll TRIPLE your membership time on all regular memberships. It's like getting three memberships for the price of one! Hurry! Offer good only during this special Open House!

EXAMPLE: BUY 1 Year Receive 3 Years
Buy 2 Years Receive 6 Years

PUBLIC WELCOME

PUNAHOU
1212 PUNAHOU ST.
IN THE BANTAN TREE PLAZA
949-0026

PEARLRIDGE
PEARLRIDGE SHOPPING CTN.
NEXT TO LONG'S
487-5551

USE ALL OUR FABULOUS FACILITIES:

- JOGGING MACHINE
- NUTRITIONAL GUIDANCE
- SUPERVISED PROGRAMS DESIGNED FOR REDUCING, GAINING OR MUSCLE TONING
- WORLDWIDE FACILITIES
- HYDRO WHIRLPOOL
- SAUNA BATH
- SUN-TANNING ROOM
- PRIVATE SHOWERS
- PRIVATE LOCKERS
- PRIVATE DRESSING RM.
- VANITY AREA
- HAIR DRYERS
- \$50,000 IN FABULOUS EXERCISE EQUIPMENT

AINA HAINA
650 W. HIND DR.
AINA HAINA PROJ. BLDG.
373-9836

KANE OHE
46-161 KAHUNIPUA ST.
ACROSS KANE OHE GAS STN.
235-6461



FAIR EXCHANGE — Marge Smith, representative of International Pacific Asian Consortium, presents a plaque to Colonel C.D. Robinson, Commanding Officer, MCAS Kaneohe Bay, in appreciation of the Air Station's support for the cultural exchange program. INTERPAC coordinates the placement of Asian exchange students with volunteer host families.

Photo by Cpl Dave Davis

Courts-Martial Report

EDITOR'S NOTE: The information contained in Courts-Martial Report is compiled by the Joint Legal Services Center and is published as a source of information for all Marines.

Lance Corporal Ramon A. Silva, 1st Battalion, 3d Marines, 1st Marine Brigade, was convicted at trial by special court-martial of the wrongful possession of three M-67 fragmentation grenades, with M-213 fuses; of the wrongful disposition of two M-67 grenades; of assault on another Marine; and of wrongfully threatening the same Marine.

He was sentenced to six months confinement at hard labor, forfeiture of \$330 pay per month for six months, reduction to

private and a bad-conduct discharge.

LCpl Barry Rivera-Rosario, 1/3, was convicted at trial by special court-martial of unauthorized absence from Dec. 27, 1980 to May 4, 1981; and for missing movement through neglect Dec. 27, 1980.

He was sentenced to three months confinement at hard labor, forfeiture of \$300 pay per month for three months, reduction to private and a bad-conduct discharge.

Private Raymond Batalona, 1st Batta-

lion, 12th Marines, 1st Marine Brigade, was convicted at trial by special court-martial of unauthorized absence from 6:30 a.m., Oct. 3 to 6:30 a.m., Oct. 4, 1979; from Oct. 11, 1979 to May 9, 1981; from May 9 to May 26, 1981; and from July 6 to Aug. 25, 1981.

He was sentenced to three months confinement at hard labor, forfeiture of \$200 pay per month for three

months and a bad-conduct discharge.

LCpl Gregory J. Scholl, Headquarters Squadron, MCAS Kaneohe Bay, was convicted at trial by special court-martial of the wrongful possession and transfer of marijuana.

He was sentenced to forfeiture of \$280 pay per month for three months and reduction to private first class.

months and a bad-conduct discharge.

He was sentenced to forfeiture of \$280 pay per month for three months and reduction to private first class.

AIKAHI AUTO PARTS

OPEN:
Mon. thru Fri.
9:30-7:00
Sat. 9:00-4:00
Sun. 9:00-1:00

NAPA
takes the
heat off
for your
car...

CALL NOW
254-3535

KAILUA AUTO PARTS

OPEN:
Mon. thru Fri.
8:00-5:30
Sat. 8:00-4:00
Sun. 8:00-1:00

NAPA
takes the
heat off
for your
car...

CALL NOW
262-8146

At a glance

School carnival

Mokapu School's Parent Teacher Student Association will sponsor their annual Mokapu School Halloween Carnival Saturday from 10 a.m. until 3 p.m. on the school grounds.

New decals

The Provost Marshal's Office will soon issue new vehicle decals to authorized military and civilian personnel.

A new Department of Defense decal will replace the present one and eliminate the need for reissuance upon transfer to another duty station since it will be used at all DoD installations.

The new decals will be issued as soon as they become available through the supply system. Until then, temporary window passes will be issued upon registration or re-registration of vehicles aboard the Air Station.

Exchange program

INTERPAC, Inter-

national Pacific Asian Consortium

is seeking volunteer host families aboard the Air Station to sponsor Asian exchange students for two weeks beginning Dec. 20. Students will be housed with their host families and will attend extension courses in English. Each participating host family will be given \$50 per student to assist in defraying expenses during the student's visit. For more information contact Marge Smith at 254-5406.

Graduate program

Embry-Riddle Aeronautical University's graduate program in Aviation Management will begin its next semester Monday. The semester will end Dec. 19.

MS 500 Government Role in Aviation and MS 613 Personnel Management and

Industrial Relations

are the courses offered.

For additional information, call the Joint Education Center at 257-2263, the Hawaii Resident Center at 373-4152 or Jack Gorman, Graduate Program Director at 845-2500.

Stop Smoking Program

A Five-Day Plan to Stop Smoking Program will be offered at the Castle Memorial Hospital Health Education Center, 46-005 Kawa St., Third Floor, Oct. 19 to 23, 7 to 8:30 p.m.

The five-evening course, conducted by the Health Education Department of Castle Memorial Hospital, includes lectures, films, group interaction and discussion. The emphasis is on nutrition and exercise. Tips are given on how to handle the cravings during the five days of cold-turkey quitting. For more informa-

tion and an appointment, call 261-0841, program is \$25.

FAMILY CHIROPRACTIC CENTER



Dr. Lawrence J. Connors, M.A., D.C.
CHIROPRACTIC... THE NATURAL SOLUTION TO HEALTH PROBLEMS

- Headache
- Nervousness
- Neck Pain
- Shoulder Arm Pain
- Bursitis
- Arthritis
- Backache
- "Pinched Nerve"
- Numbness in Hands or Feet

X-RAY FACILITIES
WORKER'S COMPENSATION
INSURANCE
HEALTH LECTURES
1ST & 3RD SAT. 9:30 A.M.

No Charge For Consultation
KANEOHE BUSINESS & PROFESSIONAL CENTER
48-005 Kawa St., Suite 201
235-6677

IT'S EVOLUTIONARY... CONTINUOUS WEAR SOFT CONTACT LENSES

- Can be worn continuously, day and night, for up to two weeks without removal.
- Superior oxygen transmission of this lens allows continuous wear—even while sleeping.
- Completely safe, comfortable and easy to wear from the start.
- 90-Day Trial Period.

COMPLETE PROFESSIONAL VISION SERVICES

ONE FULL YEAR GUARANTEE
ON ALL GLASSES

Dr. Charles Dean
Optometrist

SPECIALIZING IN CONTACT LENSES

\$105 (Not extended wear)
includes standard soft contact lenses, care kit, follow-up care by Dr. Dean and 90 DAY TRIAL PERIOD.

KAILUA
139 Hekili St.
261-9735

HAR BLOCK

Income Tax
Preparation
Phone
533-1600
or
467-8831

KAILUA'S BLACK HAIRSTYLIST



LU
announces

New Era
soft
body
cut...
10.00
OFF

For Two Weeks

Only!

CALL LU
TODAY
AT
261-1131

Sherry's Hair Care
30-C Mainulu Ave.
Kailua

KANEOHE
45-580 KAM HWY.
247-3911

SUPERSOIL

3.99
Reg. 5.99

1 CU.



REDWOOD SOIL CONDITIONER

6.99
Reg. 11.45

3 CU.



GAVIOTA

10-30-10

749
Reg. 12.90



BAMBOO PALMS

CHAMAEDOREA SEIFRIEZY HYBRIDS

12.00
EXCELLENT HOUSEPLANT

KAILUA
1127 KAILUA RD.
262-4387

BIG R

REDWOOD



WE ARE ALSO

YOUR SEWING MACHINE

Featuring:

BERNINA

For the wife or mom during Football season... There isn't a better time to buy than Now!

- Features
- Monograms
- Self-Adjusting Tension
- Open Arm

Sug. Retail
\$650



MODEL 800

- 25 yr. Exclusive Warranty
- Demo Model
- Zig Zag

NOW ONLY
\$325

AND EVEN

YOUR MICROWAVE OVEN

NEW

\$288

LITTON
TAPPAN

AMANA
PANASONIC

Easy monthly payments

VALUES TO \$525.00

PACIFIC SURPLUS & DISTRIBUTORS

CALL NOW 262-8131
OPEN: Mon., Sat. 10-6 pm. Wed. till 8 pm
Sundays 11-3 pm

1247-F Palu Hwy.
(1 block east of Castle
Hospital in the 7-11 complex)

EDITORIAL / OPINION

StreetScoop

EDITOR'S NOTE: This week's Street Scoop question was answered by members of the Air Force's 428th Tactical Fighter Squadron, deployed here for 30 days from Nellis Air Force Base, Nev.

How do you like working at a Marine base?



LtCol. Bill Looke, squadron commander: "It's unique for an Air Force fighter squadron to work from a Marine airfield. It's an extremely valuable experience flying against Marine A-4s and F-4s. We've gotten some superb support."



Sgt. Ell Bradley: "I like it because it's a whole new experience for me."



SrA. Leonard Hingle: "It's a great change of pace. Most of the Marines I've met are interesting, helpful and friendly."



SSgt. Connie Morgan: "It's a beautiful place, and the Marines are treating us great."



SrA. Ricardo Rodriguez: "From what I've seen I like it. The atmosphere is great."

Why are electric bills high?

by C.Dudley Pratt Jr.
Hawaiian Electric Co. President

Hawaiian Electric's customers have experienced sharp increases in their bills in the past year, and Heco representatives often are asked: Where are energy prices heading in Hawaii, why are they so high, and will energy ever be inexpensive again?

On Oahu, we are almost entirely dependent on oil as the fuel source for generation of electricity. About 75 percent of our revenue goes simply to pay for this oil and related revenue taxes. So Hawaii residents have a great stake in a stable world oil market.

I AM CAUTIOUSLY OPTIMISTIC that we already have seen the worst of the oil price hikes. Future cost increases should be more gradual and comparable to the inflation rate.

However, the OPEC cartel has not responded in the past to normal market influences, and forecasts of future prices must be tempered with caution.

The changing energy situation in the United States has had a major impact upon the softening of oil prices. Decontrol of domestic oil and widespread conservation have contributed to a 40 percent reduction in America's oil imports in the past three years.

But as is so often the case, what is true for the country is not always true for Hawaii. Heco is mandated by the Environmental Protection Agency to burn low-sulfur oil in its plants, and the source of that oil is Indonesia, a member of OPEC.

One important factor that increased our customers' electricity bills early this year was the termination of Heco's highly favorable 10-year-old contract, which ran out at the end of 1980.

WE NOW PAY ABOUT \$43 per barrel of low-sulfur oil compared to just \$23 in November 1980. It is costing the company \$500,000 more a day, \$3.5 million more a week, and about \$180 million more annually just to buy oil this year. Our fuel bill is now over \$1 million per day.

Hawaiian Electric does not profit from these oil price increases, and neither can we control them. Nearly 90 percent of the \$55 million increase in Heco operating revenues in this year's second quarter (compared to the same period in 1980) was paid directly to our suppliers of fuel oil and purchased power.

Another expense that affects customers' electric bills is taxes. Heco pays taxes to the state and counties based on our total revenues. In a period of wildly escalating oil prices, our taxes also have increased dramatically.

THIS POINT IS WELL illustrated by the Public Service Company Tax paid to the state and the Franchise royalty Tax that goes to the counties. In 1979, Hawaiian Electric Co. revenues resulted in a total of \$21 million in these two taxes. They went up slightly in 1980 to \$23.7 million but taxes are based on revenue levels for this year are projected at \$33.6 million.

This 60 percent increase in taxes was due almost entirely to the price rise for fuel oil and bore little relation to Heco's kilowatt-hour sales, which increased by only two percent.

Unless the state legislature acts to correct this imbalance, Heco's customers will continue to pay more taxes through their electric bill every time OPEC raises the price of oil.

Heco's efforts to control expenses include careful monitoring of fuel oil contracts and passing on the efficiency savings to our customers of the new generating unit at Kahe Point.

We also have requested the EPA to allow a switch back to higher sulfur fuel at Kahe with an estimated savings of \$50 million to \$60 million a year. This could occur with no effect on public health.

HAWAIIAN ELECTRIC CO. IS aggressively involved in the development of alternate energy in Hawaii in an effort to further reduce our

dependency on oil but the cost of this alternate energy will not be cheap. The Windfarms, Ltd., project at Kahuku is expected to cost \$350 million for a maximum potential of 80,000 kilowatts, an 8 percent increase to our installed generation capacity.

The cautious optimist, therefore, sees a gradual reduction in our foreign oil requirement, a slowdown in energy price increases — but no decrease — and a strong push to develop the abundant resources we enjoy right here in Hawaii.

EDITOR'S NOTE: After 27 years with Hawaiian Electric Co., C. Dudley Pratt Jr., became its president Jan. 1, 1981. Starting as a designer in the engineering department, he has held several executive positions, including manager of distribution, assistant to the president, vice president for planning, and executive vice president.

Besides serving on Hawaiian Electric's board of directors, Pratt is chairman of the board of the company's two subsidiaries, Maui Electric Co. and Hawaii Electric Light Co. He is a vice president of the Aloha Council, Boy Scouts of America, and a director of Aloha United Way and the Chamber of Commerce of Hawaii.

He is a past president of the Hawaii section, American Society of Civil Engineers.

Leatherneck reacts to Corps problem

Marine calls for war on drug users

by MSgt Jim Paynter

MARINE CORPS AIR STATION, EL TORO, SANTA ANA, CALIF. — We've all heard it before, and we'll all hear it again: There is a drug problem in the Marine Corps.

Reactions to the statement range from "What problem?" to "Not my Marines" to "The only problem is the high cost of getting high" to "It's just a reflection of the society we live in."

The first two reactions come from people who have their heads firmly implanted in the sand. The third reaction is smart-mouth and doesn't deserve a comment.

It's the fourth reaction — "reflection of society" — which bothers me most. It's a cop-out... and worse.

First of all, when we make that statement we are saying the problem is unsolvable. It's bigger than we can handle. We've given up without a fight.

Secondly, we are denying we have any responsibility to fight it. "Everybody is doing it, so who am I to say it's wrong and I won't put up with it?"

And finally — and perhaps most importantly — since when has the Marine Corps been a "reflection of society"? I'll be damned if I'll let anybody tell me I'm just another face in the crowd! I am a Marine! And that puts me head and shoulders above the rest of "society" out there.

So let's get off our duffs and do something about our — yes, I said "our" — drug problem. Let's show the world once again that we can win against odds which look formidable. And let's show the world — and ourselves — that we are not just part of the crowd.

Let's identify, isolate, close with and destroy this enemy. Let's inform the drug users in our Corps that we are declaring war on them... right now! Then, let's use every weapon in our arsenal to make sure we win.

My Turn

Women's Weight Lifting and Body Building

We are writing in regard to the letter in the Sept. 30 issue concerning the "Women's Weight Lifting and Body Building Class." We have been attending this class since its infancy and have been very impressed by Corporal Abraham Jones' work.

Before class Cpl Jones explains how many exercises we'll do and that new people should not push themselves, but go at their own pace. He also suggests the women bring towels or mats on which to exercise on. We are not always on the floor, and the few floor exercises we do are such that floor mats are not required.

The "Exercise Addict" referred to the counting aloud and suggested that Cpl Jones was something out of boot camp. We have never witnessed him intimidating or otherwise embarrassing any women for not counting. This counting together keeps us in unison and continues to motivate us throughout the class. To suggest that women go there for silence or a retreat from noise at home, as the "Exercise Addict" claims, seems to be off base and can be solved by a trip to the library.

In answer to where our hands are during leg lifts, etc., Cpl Jones always tells us to put them where it is best for us. He has never criticized us for doing what is comfortable for us, provided it is done correctly.

After the exercises, Cpl Jones explains to the new members, the weight lifting apparatus, how to use it, and the number at which to start. He is always there for questions and is more than happy to assist the women.

Also, at each class he urges the ladies to write their comments in the attendance log. He does read this and has succeeded in getting us lighter and smaller dumbbells to work out with, as the men's are quite awkward. He has instituted into our class, exercises from a women's exercise book that someone showed him and he also started a day class because a few women requested it.

We believe that this service is a great asset. To belittle Cpl Jones' time and efforts, we feel, would be a great injustice. This free workshop is tremendous and we feel he should be congratulated, not condemned by one dissatisfied customer who obviously was looking for something else.

We stand — "not afraid to sign our names!"
Jackie Stine
Missy Parham
Teresa O'Connor

Women's Weight Lifting and Body Building

The letter by "An Exercise Addict" in Sept. 30's Hawaii Marine was a little

more than some dissatisfied body builder expressing his opinion.

I am an avid supporter of the Women's Weight Lifting and Body Building Class and for the last two months, I have been going three nights a week. I go early to get a good place as there are, at times, a great many other supporters. And although I have not counted the supporters, "70" does not sound far fetched. Week after week, we go through the calisthenics and machines and so far I am pleased with the results.

Now, regarding Ms. "Addict's" letter. Although I cannot speak for everyone, my opinion is that Ms. Addict's letter is simply a rancorous (bitter, resentful) diatribe (abusive criticism) on one hand and a sales pitch by an invidious (offensive) saleswoman to sell her product, i.e., Body Dynamics, on the other.

We 70 bodies could be spending the \$15 to \$20 a month for music, showers, sauna and a weight machine as Ms. Addict's letter proffers. But, why should we? We already have those facilities available to us, minus the music of course, at no cost. And, with Corporal Jones' body building expertise, we have saved a few dollars that will go to our new wardrobes!

Ultimately, I'm not saying that "Exercise Addict's" letter is without merit. Let's just say — misrepresented... The class, still in the developing stages, has been somewhat crowded but now a morning class is offered. This was the

result of a continuing interest in the class, by the class, for the class. This should alleviate some crowding. As for utilization of the weight machines and direction from Cpl Jones, all I can say is that he is available for direction and instructs the newcomers on a nightly basis. If one cannot get to him for comment, Cpl Jones has a comment book on his desk for our use. Many suggestions have been incorporated into our exercise program. Clearly, "Exercise Addict," if you had stayed you would have seen that Cpl Jones is approachable for "direction."

To end this rebuttal, Cpl Jones asks from us, not greenbacks but hard work. Everyone is working and we all work hard. So far, I feel it is paying off. Our motivated and enthusiastic body building class with Cpl Jones' professional body building guidance make us a darn good team. What we don't need is some shunned businesswoman, who is trying to turn a buck, to revile the good thing we have going.

Beverly Hewitt

Women's Weight Lifting and Body Building

In response to the letter ran in the Sept. 30 issue of the Hawaii Marine concerning the body building program, it should be known that the response from the class to that letter was very negative. We want it to be known that we support Cpl Jones all the way.

If the person or persons who wrote that letter are so qualified to make such accusations and criticisms, wouldn't it have demonstrated a more mature attitude for them to have offered some helpful hints or constructive criticism? This would benefit the program and also the wives who cannot afford Body Dynamics.

Cpl Jones has always been very cooperative and has always focused on our specific problems. It's great to have these free programs that we feel are very good.

Cpl Jones has never threatened us. He urges us on, but stresses the point that if we cannot keep up with him, then don't.

The majority of the ladies who attend regularly said follow Cpl Jones' guidelines feel they have benefited from the program.

Debbie Fulmer

EDITOR'S NOTE — The Hawaii Marine staff received several letters advocating the Women's Weight Lifting and Body Building Class directed by Corporal Abraham Jones during the past weeks. Unfortunately, space allows us to only print three.

The Hawaii Marine staff wants to hear from their readers to find out just what it is that makes you tick, think, act or react. Now's your chance to sound off by writing to the editor of Hawaii Marine and getting in your two cents worth.

Letters will be printed at the discretion of the editor.



Safety restraints cut down keiki's traffic death toll

by Billie Hise

WASHINGTON — Not many people would let their small child toddle along the edge of a roof or a three-story building. But an alarming number of people don't think about buckling their child in a safety seat or using a seat belt for an older child while riding in a vehicle. Consequently, the automobile accident is the number one killer of children under the age of 4. A car crashing at 30 mph puts about the same amount of force on a child as a fall from a three-story building.

SAFETY SEATS AND seat belts are the only available means of cutting down the traffic death toll of children. Research shows

that at least 85 percent of the deaths and 66 percent of the injuries to children in automobile accidents could be eliminated if every child under the age of 15 were buckled into a restraining system of some sort at the time of the crash.

Some drivers may say, "But I drive very carefully around town, and we use seat belts on the highway." Careful driving may eliminate some of the accidents, but we all make mistakes and the "other guy" may be angry, lighting a cigarette, adjusting the tape deck, checking the glove compartment for a map or "just doesn't see you." Even a crash at 12 mph has resulted in death.

Some parents have been

observed holding small children in their laps while the vehicle is in motion. But a 120-pound mother will exert about 3,600 pounds of pressure on her tiny infant if she is thrown into the dashboard or windshield by the force of a 30 mph car crash. What if the mother is buckled up — is it still safe for her to hold her child? No, considering that in a 30 mph crash, a child who weighs 20 pounds will be yanked away from his or her mother's arms at a force equal to 600 pounds.

SOMETIMES THERE IS no actual crash; the injury to the head may be the result of a sudden stop, when the child is thrown forward, bumping the head against the dashboard. Take a

moment to figure out the approximate amount of force at which your child or you may hit the interior of a car or windshield. To do this, simply multiply your weight or your child's by your usual driving speed. Can you or your child absorb that amount of force safely?

Only federally-approved safety car seats and seat belts can help the occupants of a vehicle withstand that amount of pressure and distribute it enough to minimize the chance of injury.

Do what you can to help your child stay healthy and alive. See that your children are buckled up. Set a good example. Help save your child's life.

COMMUNICATIONS SYSTEMS LABORATORIES

Electronic Engineering, Design, Prototype and Consultation Services now available to the public, industry and Government Agencies.

Complete list of services, reasonable fee schedule available upon request.

HAWAII INVENTORS - Need an electronic package to make your idea click? Call us in complete confidence. Through our industry contacts we may even be able to help put your idea into production and marketing.

CALL 677-3380 M-F 8:00 AM-4:30 PM



SOFT CONTACTS

\$98

Includes tax, fitting instructions, starter kit, 120 day guarantee w/coupon

10% OFF
20% OFF

First pair of Glasses
Second pair of glasses

Over 100 Frames in Stock

KAILUA OPTICAL

262-6191

332 ULUNI ST., IN KAILUA

Even though you already have a government retirement plan

You can also have a Bankoh Individual Retirement Account.

Contribute up to \$2,000 annually. Even though you already have a government retirement plan, you may be able to contribute up to \$2,000 annually to a Bankoh Individual Retirement Account (IRA) starting January 4, 1982.

Enjoy tax benefits. You may deduct your annual contribution from each year's taxable income. And you don't pay taxes on the contributions or interest earned until you make withdrawals at retirement—when the rate at which you're taxed may be lower.

Earn money market interest rates. Bankoh IRAs pay rates equal to those available on 2½-year U.S. Treasury Notes for contributions with maturities of 3 years. (For maturities of 6 years, the interest rate is currently lower.)

No one can predict future interest rates, but here are some examples: Suppose you're 35 years old and you contribute \$2,000 on January 4 each year until you reach age 60. Based on the following annual interest rates, you could accumulate:

Annual Interest Rate	10%	12%	14%
Amount You Could Accumulate Over 25 Years	\$216,363	\$298,668	\$414,665

Bankoh Automatic Transfer makes it easy.

You can have periodic contributions made automatically from your Bankoh Checking or Savings account with Automatic Transfer. Nothing could be easier!

You can sign up now.

Just fill out and return the coupon or phone 537-8266 with any questions. We'll get all the paperwork taken care of. Then, when January 4 rolls around, you can start making your contributions.

Substantial interest penalty for early withdrawal. Individual Retirement Accounts continue to be subject to all Internal Revenue Service laws and regulations.

FIND OUT HOW.

Yes, I want to know more about your new Bankoh Individual Retirement Account. Please contact me.

NAME _____

ADDRESS _____

CITY _____ ZIP _____

BUSINESS PHONE _____ HOME _____

Mail to: Bank of Hawaii Bankoh Retirement Plans
P.O. Box 2900, Honolulu, Hawaii 96846

HM 10/14

h Bank of Hawaii
We've got winning ways.

YOUR FULL SERVICE BANK
MEMBER FDIC

CONSOLIDATED THEATRES

KAM D.I. "SUPER" SWAP MEET
EVERY WED. - THURS. - SAT. & SUN.
7:00 AM to 3:00 PM
Opp. Pearlridge Cntr. • Ph. 536-3576 or 488-5822

WAIKIKI #1
Seaside nr. Kalakaua
923-2394

MARSHA MASON
KRISTY MCNICHOL
"ONLY WHEN I LAUGH" (PG)
12-45 • 3:00
5:30 • 8:00 • 10:30 PM

WAIKIKI #2
Seaside
923-5353

PETER FALK
BURT YOUNG
"ALL THE MARBLES" (R)
Call Theatre For Show Times

WAIKIKI #3
Kalakaua nr. Seaside
923-5353

ROBERT DAPIRO
ROBERT DUVALL
"CONFESSIONS" (R)
1:30 • 3:45
8:00 • 8:15 • 10:30 PM

KUHIO #1
2095 Kuhio
941-4422

WILLIAM HURT
RICHARD CRENNA
"BODY HEAT" (R)
TONIGHT:
8:45 • 8:00 • 10:15 PM

KUHIO #2
ENDS TOMORROW
"AN AMERICAN WEREWOLF IN LONDON" (R)
TONIGHT:
8:15 • 8:15 • 10:15 PM

KAPIOLANI
1646 Kapiolani
955-5115

ENDS TOMORROW
LINDA BLAIR
"HELL NIGHT" (R)
8:30 • 8:30 • 10:30 PM

MAKIKI

ASIAN CINEMA #1
Beverly
at Keeaumoku
944-9644

STARTS TOMORROW
"PROFESSIONAL KILLER"
"MARJANNA"
"MUGGLING SYNDICATE"
WHD Subtitles
Call Theatre For Show Times

ASIAN CINEMA #2
STARTS TOMORROW
"TORASAKI'S BANY"
"SPLINTERED LOVE"
WHD Subtitles
Call Theatre For Show Times

UNIVERSITY • PINAKU

VARSITY
University
nr. Beyerland
946-4144

DUDLEY MOORE
LIZ MINNELLI
"ARTIST" (PG)
TONIGHT:
8:30 • 8:15 • 10:15 PM

ALHAMBRA
King nr. Kalakaua
941-5291

STARTS FRIDAY
JACQUELINE BISHOP
"BONNIE AND CLYDE"
Call Theatre For Show Times

HAWAII
1110 Bethel
536-6300

FRIDAY-SUNDAY:
"GREAT MUPPET CAPER" (G)
"THE DAY TIME ENDED" (PG)
Call Theatre For Show Times

TOYO
1210 College Walk
538-1654

STARTS FRIDAY:
"AN NEW PIANO FILM"
"KUMAMOTO ALBAZAS"
"SAKIT AKO MAHISIA"
Call Theatre For Show Times

LIBERTY
1179 Nuuanu
517-1686

TOMORROW:
"FURY OF THE SHAOLIN MASTER"
"BRUCE LEE: THE MAN, THE MYTH"
Call Theatre For Show Times

AIEA • PEARL CITY

KAM D.I. #1
Moanalua nr. Kam Hwy.
488-3835

LINDA BLAIR
"HELL NIGHT" (R)
Show Times:
8:45 • 10:15 PM
"KILL SQUAD" (R)
8:45 PM ONLY
GATES OPEN AT 8:00 PM

KAM D.I. #2
BILL MURRAY
"STRIPE" (R)
8:45 TO 10:30 PM
"UNDER THE RAINBOW" (PG)
8:45 PM ONLY
GATES OPEN AT 8:00 PM
CHILDREN UNDER 12 YRS. FREE

PEARLRIDGE 1
Pearlridge Center
487-5581

ROGER MOORE
"FOR YOUR EYES ONLY" (R)
TONIGHT:
8:00 • 8:30 • 10:45 PM

PEARLRIDGE 2
ENDS TOMORROW
"KILL SQUAD" (R)
TONIGHT:
8:15 • 8:15 • 10:15 PM

PEARLRIDGE 3
CHRISTOPHER REEVE
"SUPERMAN II" (PG)
TONIGHT:
5:30 • 8:00 • 10:15 PM

PEARLRIDGE 4
ENDS TOMORROW
"BROCKE SHIELD"
"ENDLESS LOVE" (R)
TONIGHT:
8:15 • 8:30 • 10:30 PM

KAILUA D.I.
917 Pal Highway
261-6032

STARTS FRIDAY:
"ALL THE MARBLES" (R)
"MORE AMERICAN GRAFFITI"
GATES OPEN AT 8:00 PM
SHOW STARTS AT 8:30 PM

ALHAMBRA
Alhambra Park Shopping Center
254-1330

"TARZAN, THE APESMAN" (R)
8:30 • 10:30 PM
"CAVEMAN" (PG)
8:45 PM ONLY

Hawaiian fashion show draws Marine Exchange purchasers

by Sgt Inez J. Stoner

The "Hawaiian Magic" Fashion and Products Trade Show in Honolulu, Sept. 21 through 23, was the place to be for two purchasers from the Air Station's Marine Corps Exchange. And the decisions to be made included which of the many fashions exhibited should be put on the racks at the Exchange next spring.

Lydia Forsyth, clothing purchaser, and Donna Widner, housewares and gifts purchaser for the Exchange, were among 1,200 buyers from around the world at the First International Fashions and Products Trade Show held at the Hilton Hawaiian Village and sponsored by the Hawaiian Fashion Guild.

In the past only local manufacturers participated in the show. This year manufacturers from the mainland, Europe and even Africa exhibited fashions with the theme of "Leisure Living."

THE SHOW kicked off Sept. 21 with a fashion show featuring 275 garments from local manufacturers. Pamela Offer, Miss

Hawaii 1981, was the center of attention, modeling fashions which will also appear in upcoming issues of Vogue Magazine.

Mrs. Forsyth and Mrs. Widner inspected the new line of early spring apparel, swimwear, fashion accessories and products, presented in a vibrant, electrifying rainbow of tropical colors. Stripes and gold, gold and more gold will also be the rage next spring.

In the housewares and gifts department, Mrs. Widner has announced that a large amount of crystal has been ordered and will be arriving at the Exchange in time for Christmas. During the show, Mrs. Widner looked primarily for locally made gifts, including pottery and wind chimes. "We have a real demand for these types of gifts," she said.

AFTER reviewing the fashions at the three-day show, Mrs. Forsyth said that she intends to "buy what has been successful in the past, what is popular and what is priced right. We have no indication of what to buy," she explained,

"other than what sells at the PX."

She continued, "We have a very selected audience. We have to buy for the customers here on the base. We can't rely on outside customers to buy our merchandise."

Purchasing clothing for a Marine Corps Exchange in Hawaii can pose a number of special problems. According to Mrs. Forsyth, transportation of items purchased for sale at the Exchange is always a problem. And, although there is a very little seasonal change in Hawaii, there is a dramatic seasonal change in clothing manufactured on the mainland and in Europe.

"THE manufacturers could be selling fall goods but we still want summer clothes," said Mrs. Forsyth. "For example, everybody wants light-weight nightwear and all the manufacturers are selling now is flannel. And buying back-to-school clothing is really difficult," she continued. "The last thing people here want to buy is something with long sleeves. People expect us to always have

light-weight clothing," she said, "but the manufacturers don't make shorts all year long."

Mrs. Forsyth explained that the best way to handle this problem is to "over-buy" on the spring and summer lines. Early spring apparel was the very line exhibited at the "Hawaiian Magic" show.

With all the exciting new fashions scheduled to be purchased by the Marine Corps Exchange, it may be surprising that, according to Mrs. Forsyth, a number of potential Marine Corps Exchange customers are shopping at other services' exchanges. She claims that many people feel that other services' exchanges have better prices and a better selection.

"ALL MARINE Corps Exchanges are run independently," said Mrs. Forsyth. "But the Navy (for example) buys from only one source for all their exchanges and,

because of that, they can buy in volume and at a lower price."

"We have found a few good budget buys and we're always looking for bargains," said Mrs. Widner, "but it's very hard to find quality in a budget line."

Mrs. Forsyth added that when Marines and their dependents shop at Navy Exchanges the profits do not go to the Marine Corps' recreational fund, as they do from sales at the Marine Corps Exchange.

"Marines should support their own exchanges so that their recreation fund gets the money from the profits," said Mrs. Forsyth.

The exciting apparel and giftware selected by Mrs. Forsyth and Mrs. Widner at the "Hawaiian Magic" fashion show should entice even the most discriminating shopper into the Marine Corps Exchange. Shoppers can expect some fashionable new items on the rack at the Exchange soon.



Photo courtesy of the Hawaiian Fashion Guild

"FALL" FASHIONS? — These swim suits were among hundreds of fashions modeled at the "Hawaiian Magic" Fashions and Products Trade Show recently. Some of the fashions may be available for purchase at the Marine Corps Exchange this spring. Lydia Forsyth and Donna Widner, both purchasers for the Marine Corps Exchange, attended the three-day show sponsored by the Hawaiian Fashion Guild, looking for next spring's fashions.

EMERGENCY MEDICAL CARE 24 HOURS A DAY/ 7 DAYS A WEEK INCLUDING ALL HOLIDAYS



Hawaii Emergency Physicians Associated, Inc.

Serving the Windward Oahu Community at



CASTLE MEMORIAL HOSPITAL

We accept all private, State and Federal Medical Insurance Plans

Phone 261-0841

for Castle Hospital

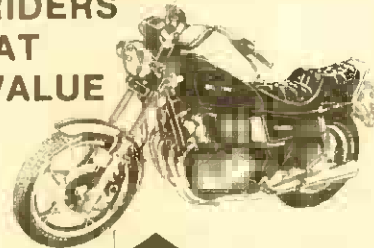
Ask for your personal Emergency Medical Identification Card.
Hawaii Emergency Physicians Associated, Inc. • Established 1971
(clip this ad and place next to your phone where this number will be handy.)

we care...
we share.



SUZUKI STATE WIDE CLEARANCE!

LO-RIDERS
AT
HI-VALUE



In Kaneohe
46-144 Kahuhipa
235-3300

Downtown
818 Iwilei Rd.
536-7023

SUZUKI
we handle
Hawaii

A DIVISION OF
MONTGOMERY MOTORS

Full line of
Mopeds,
Motorcycles,
Parts & Service.

TLA SPECIAL "ROOM & CAR PACKAGE"

Includes:

- RENTAL CAR by Trans-lease Hawaii Rent-A-Car.
- DELUXE, Spacious Rooms with:
Air Conditioning
FREE Color Television
Room Service Available
• FREE Parking, Baby-sitter Referral
- Hotel Laundromat
- Swimming Pool
- FREE 24-Hour Airport Shuttle Service
- Kennels
- CREDIT CARDS:
American Express,
VISA, Bank Americard,
Carte Blanche, Diner's Club & MasterCard.
- Location on main bus line, convenient to all military installations, WAIKIKI, MAJOR ISLAND ATTRACTIONS AND AIRPORT.

ROOM
ONLY

\$38.00
Plus Tax
per night

For Reservations &
Information Call:

836-0661

Holiday Inn AIRPORT

Holiday Inn
HONOLULU

AIRPORT

Additional Conveniences:
Lei Maker's Garden Restaurant
Kalama Lounge
(with nightly entertainment)

TLA Approved
Room & Car \$51.05 Per Day

Five-o-six P.M.



Now a word from the Talking Watch!

Omni introduces
the world's first
talking wrist watch.

DISTRIBUTORS
REGULAR
\$125.00
NOW \$99.95

WHILE THEY LAST
AT



A CLOCK HOUSE

Pearlridge Shopping Center
Phase I - 487-8825

(NOT AVAILABLE ELSEWHERE IN HAWAII)

HOLIDAY SPECIAL at your Exchange!



Mele
Kalikimaka



BIG
20%
SAVINGS
ON EARLY
ORDERS

Send KODAK Photo-Greeting Cards

- Made from your favorite color print, color slide or Kodacolor film negative.
- Christmas, Chanukah or Navidad designs.
- Your choice of Trim-Line or Slim-Line styles.
- Save 20% on all orders placed by November 6.
- Orders accepted through December 2, 1981.

A thoughtful Holiday message.

See your Exchange for details

This advertisement was neither paid for, nor sponsored in whole or in part, by the Exchange Service.



Cinema

W T h F S S M T
 MCAS Theater 1 2 3 4 5 6 7
 Camp Smith Theater 3 7 8 9 10 11 12

1. **THE LITTLE DRAGONS** - Charles Lane, Ann Southern, PG, comedy suspense thriller. Two brothers rescue Sally Boyden with the aid of their grandfather, Lane.

2. **GOING APE** - Tony Danza, Jessica Walters, PG, comedy. A circus owner leaves his son, Danza, five million dollars on the condition that he cares for three orangutans.

3. **THE FOUR SEASONS** - Alan Alda, Carol Burnett, PG, comedy. The experiences of three couples who go on short vacations together at different seasons of the year.

4. **CATHY'S CURSE** - Alan Scarfe, Beverly Murray, PG, horror drama. When a young girl moves with her family to her father's boyhood

home, she finds a sepia photograph of her aunt in the attic and becomes obsessed with it.

5. **MANHATTAN** - Woody Allen, Diane Keaton, R, comedy. The family of a TV comedy writer becomes separated and each have their own affairs.

6. **URBAN COWBOY** - John Travolta, Debra Winger, PG, comedy drama. A young Texas couple romp at Gilley's, a combination bar, dance hall and game parlor.

7. **EYEWITNESS** - Sigourney Weaver, William Hurt, R, mystery drama. A murder mystery about a Vietnamese business man who is killed in his office building, but the chief suspect is a former janitor the dead man caused to be fired.

8. **THE HIGH COUNTRY** - Timothy Bottoms, Linda Purl, PG, romantic adventure.

Bottoms meets Purl as they are thrown together through circumstances.

9. **PARTS - THE CLONUS HORROR** - Dick Sargent, Laurele Tuttle, R, science fiction horror. The Clonus Institute is a breeding facility that provides clone organ parts for the people in charge.

10. **TEHERAN INCIDENT** - Peter Graves, Curt Jurgens, PG, action drama. A cruise missile is stolen from its Russian test site. The Russians and the Americans meet while investigating this incident.

11. **SUNDAY LOVERS** - Gene Wilder, Roger Moore, R, romantic comedy. In a four-part series, Moore, Wilder, Lino Ventura and Ugo Tognazzi set out to demonstrate the collective attitudes towards love in their respective countries.



FOREIGN MARINE VISITORS - Brigadier General Hui Wook Kim, Commanding General, Naval Training Center, Chin Hae, Republic of Korea, and Major General Kun Woo Lee, Deputy Chief of Naval Operations for Marine Affairs, discuss anti-mechanized assault tactics with Captain Richard Roan, Commanding Officer, Company D, 3d Assault Amphibian Battalion (left to right). The ROKN Marines toured units at the Air Station during their visit Oct. 5.

Real Estate
 By Eileen Hanohano
 REALTOR®

INTEREST DOWN — COST UP

Are you waiting until interest rates drop before you buy a home? Do you think that this will save you money? The home you have your eye on will cost you more in monthly payments two years from now - even if the interest rate drops one percent.

For example, take a home that costs \$100,000. With a 20% down-payment and financed with a 30 year, 16.5% mortgage, the monthly payment would be \$1,108.12. But two years from now, if the price rose at 10% per year, the now \$100,000 home would likely cost \$121,000. If the interest rate decreased to 15%, not only would the down payment be \$4,200 more, but the monthly payment would increase to \$1,224.00. If the interest rate stayed at 16.5% the payment would come to \$1,340.84.

So, it's obvious that the overall value of the home - not the interest rate - makes the biggest impact on your monthly payment. Since there is no indication of property values decreasing, the moral of the story is - Buy now or pay more later.

If there is anything we can do to help you in the field of real estate, please phone or drop in at the office of ERA HANOHANO REALTY, 785 Kaim Hwy., #206, Pearl City. Phone: 456-4273 or 623-4041. We're here to help.

TRUCKLOAD SUPER SALE ON MONEY SAVING, ENERGY EFFICIENT MICROWAVE OVENS

LAST CHANCE FOR ONE WEEK ONLY Or While Supply Lasts

Limited Quantities

NEW \$288

LITTON TAPPAN

AMANA PANASONIC

Easy monthly payments

OUR GUARANTEE

VALUES TO \$525.00

NO LOWER PRICES ANYWHERE

Pacific Surplus
 "Your Microwave Specialists"
 1247-F Pali Hwy. (1 block east of Castle Hospital in the 7-11 complex)

Monday thru Saturday 10:00-8:00
 Wednesday 10:00-8:00
 Sundays 11-5

SALE ENDS SUN., 10/18/5pm Or While Supply Lasts

• Carousel
 • Electronics
 • Meal-in-one
 • Radar ranges
 • Probes

CALL NOW 262-8131



GET OUT OF DEBT

through Chapter 13
 A federal law which helps to pay off your debts without borrowing and in payments you can afford, stops creditor harassment and law suits, protects your job, co-signers and property. Initial consultation or info packet are without obligation.

Please call:

HOWARD Y. TANAKA

Attorney versed in Chapter 13 filings
 Suite 703, Alii Bishop Bldg.
 1136 Union Mall, Honolulu
 Telephone: 526-1544

ALL ABOUT HAIR...

Last week we talked about using an instant conditioner after shampooing the hair to give it sheen and restore its acid mantle. Many times, if the hair has been chemically treated, this is enough to maintain the condition of the hair but not sufficient to restore any of the protein that has been depleted. To restore protein lost through chemicals or abuse to the hair, you have to actually recondition the hair with protein conditioners. Protein is both a health and beauty measure when taken internally, and when applied externally to the hair, skin and nails. The protein in our hair and skin products is not the same as is found in meat, eggs or fish. Cosmetic proteins are collagen protein derivatives (collagen is a major protein of the dermis of the skin). They are hydrolyzed to a molecular weight and size which is compatible with the hair and skin. These hydrolyzed protein additives improve the structure and strength of the hair and help protect and restore the hair after chemical services. In other words, when you pick a reconditioner it not only has to be made of collagen protein but it has to have a small enough molecular weight to penetrate the hair or it is going to act as an instant conditioner. A reconstructive conditioner also has to be left on the hair longer anywhere from 15 to 30 minutes in order to get the full benefit. These types of conditioning products are very expensive because of the concentration of protein in them and should be used sparingly because once the hair has reached its saturation point it will not absorb anymore conditioner.

Please feel free to come in for a free consultation to get yourself on a good conditioning program.

We are now offering a new service - Waxing. This is an ideal way to rid yourself of unwanted hair. Lori is training a new manicurist. She is teaching her in her specialized manicures and eventually she will also be doing pedicures and acrylics. Her name is Kathleen Kennedy. And for the month of October, while she is being trained, her manicures will be half price!! This is a terrific time to get your nails in shape for the holidays.

Susan Beers' Salon

All hair services specializing in: highlighting, perms, manicures, pedicures, waxing & make-up.

116-C Hekili St. Kailua

CALL TODAY 261-8571



WE'VE BEEN FLYING FROM HONOLULU TO DALLAS-FORT WORTH AND BEYOND FOR TWELVE YEARS.

Fly Braniff's 747 nonstops to Dallas-Fort Worth any day of the week. From there, you can connect to Braniff cities in Britain, South America, Canada, Mexico and throughout the U.S.A. Without ever changing airlines or terminals.

U.S.A.

Amarillo
 Austin
 Chicago
 Corpus Christi
 Dallas-Fort Worth
 Des Moines
 Fort Lauderdale
 Harlingen
 Houston
 Kansas City
 Lubbock
 Memphis
 Miami

Midland-Odessa
 Minneapolis-St. Paul
 Nashville
 New Orleans
 New York-Newark
 Oklahoma City
 Omaha
 Orlando
 Philadelphia
 San Antonio
 Tampa-St. Petersburg
 Tulsa
 Washington, D.C.-Baltimore
 Wichita

CANADA

Montreal
 Toronto

BRITAIN

London

SOUTH AMERICA

Asuncion
 Bogota
 Buenos Aires
 Cali
 Caracas

Guayaquil

La Paz
 Lima
 Maracaibo
 Panama City
 Quito
 Rio de Janeiro
 Santiago
 Sao Paulo

MEXICO

Acapulco
 Mexico

For reservations, call your travel agent, corporate travel office or Braniff in Hawaii toll-free at (800) 527-5090.

BRANIFF

SPORTS

Marine basketball team loses season openers

Mazda snatches win

FORT SHAFTER, HAWAII — The Hawaii Marine Varsity Basketball team thought they had the game "in the bag" when Corporal Walter Edmonds hit two free throws with 42 seconds left on the clock.

Shelly Mazda came back with a field goal, called a time out and with 13 seconds to go, had narrowed the Marines lead to one point 89-88.

When play resumed Bill Higgins drove past the Marines' defense and completed a 15-foot jump shot. Suddenly the Marines were down by a point with no time outs left.

THE MARINES started their drive down court with four seconds left and called time out which resulted in a technical foul. Higgins returned to the foul line to shoot the technical and the score stood at a final: Shelly Mazda 91, Marines 89.

After the season opener Oct. 6 Marine Coach Gunnery Sergeant Richard Holloway, still shocked by Shelly Mazda's come-from-behind victory, exclaimed, "I still don't know how we lost." We had the game from the start.

Shelly Mazda's player/coach Bill Peebles attributes their win to luck. "We got a break at the end of the game. As a team we have never practiced together and two of tonight's players I saw for the first time. The Marines were quicker and had better players... we just got lucky."

Although Shelly Mazda won the opening tip-off, the Marines were in total control of most of the game. It took Shelly Mazda 30 seconds to score the first points and after three minutes the Marines had built up a 10-5 lead.

Utilizing their height advantage and a low post on offense Mazda quickly recovered and the score became tied at 17.

SEEING THAT the team was losing momentum, Coach Holloway called a time out to regroup. The Marines returned to the court fired up and in a minute's time, had scored five points, regaining the lead 23-17.

Shelly Mazda was quick to come back and midway through the first half they took the lead for the first time since the opening tip 26-25. The lead went back and forth until the end of the half.

With six seconds left Cpl Edmonds again drove the lane, laid the ball up and brought the Marines within three points 51-48.

The hustling ball recovered in the beginning of the second half. Fast breaks as the result of steals by Cpl Edmonds and Hospitalman 3rd Class Joseph Shepred gave the Marines the advantage again scoring 11 points to Shelly Mazda's one in the first 90 seconds.

SHELLY MAZDA turned the table and with five minutes to go, the score was again tied at 81.

Shelly Mazda started the game with seven players, but with two minutes left and the score tied at 84 Antoine Goodlow fouled out. Marine Team captain PFC Larry Volley missed both of the crucial foul shots, however, the Marines obtained the rebound. Cpl Edmonds went up for the shot and was fouled by Joe Frazier. Cpl Edmonds completed the three-point play and Frazier returned to the bench with five fouls and 18 points.

Cpl Edmonds was fouled again and returned to the line to connect with two more points. Shelly Mazda scored another bucket to make the score 89-88.

The excitement mounted. Mazda came through under pressure and the Marines stood dumb-founded losing their season opener.

HIGH SCORER for the Marines was Cpl Edmonds with 23 points hitting seven for nine at the foul line. Sergeant Tommie Davis had 14 along with PFC Volley. Cpl Cliff Sharps finished the game with 12 points and fellow forward Jimmy Harvey scored 10.

The bulk of Shelly Mazda's scoring came from their big men: Paul Botts with 23, Bill Higgins had 22 and Frazier notched 18.

by LCpl Charlie Marshall



Photo by LCpl Charlie Marshall

TWO POINTS — Private First Class A. Cook gets the ball away before a Shelly Mazda player can block his shot. The Marines lost their season opener to Shelly Mazda in the last 13 seconds, 91-89, Oct. 6.

Pirates best Marines.

TRIPLER ARMY MEDICAL CENTER, HAWAII — Missed foul shots could be the reason why the Marine Varsity Basketball team fell to Jolly Rogers Pirates 98-90 Thursday night.

The Marines were fouled 18 times in the first half which resulted in 31 trips to the free throw line. Only 19 of them were successful.

The Pirates, who were last year's champions, enjoyed a height advantage. Their squad also included several former professional basketball players.

The varsity team scored first but Jolly Rogers tied it up. Both teams hustled up and down the court until the Pirates broke it open with fast breaks. Down 12-6 the Marines' shots finally hit the target and the breaks went in their favor.

It seemed as if the Pirates were teasing the Marines by building up a substantial lead and then the Marines would trim the lead to three points.

Just before the close of the first half the varsity team was losing by a single point until Jolly Rogers started the fast break again.

The Marines entered their locker room down 52-47 at the end of the first half.

Corporal Cliff Sharps was a little too active in the first half, committing four fouls in the first

15 minutes of play. It wasn't long after the second half began that he fouled out. The six-foot four-inch center left the game with 15 points, and five of 11 free throws.

As the Pirates' starters rested in the early part of the second half, the Marines slowed the game down and started to play as a team. But the Pirates' bench maintained a 10-point lead.

The Pirates' starters returned to the floor and the Marines kept up to their pace but couldn't get a lead advantage. The clock ticked on and the Marines ended up on the losing half of a 98-90 final score.

Cpl Walter Edmonds was the Marines' high scorer with 29 points and 11 of 12 foul shots. Although Cpl Sharps fouled out early in the second half, he followed as the second high-point man. Private First Class Larry Volley was the third leading scorer for the Marines with 12 points.

Alan Tanabe and Artie Wilson led the Pirates with 22 points each and Dwight Holiday was not far behind with 20.

Wilson, the player-coach for Jolly Rogers said he was disappointed in his team's performance. "The team was rusty tonight. This was the first time most of the players have been on the court in two months. Last year we had a record of 17 wins and two losses and it's going to take a little time and practice for us to return to that caliber."

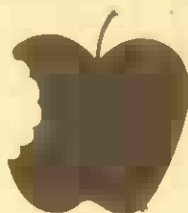
CRIME STOP

MCAS PMO 257-2123



INVISIBLE BRACES

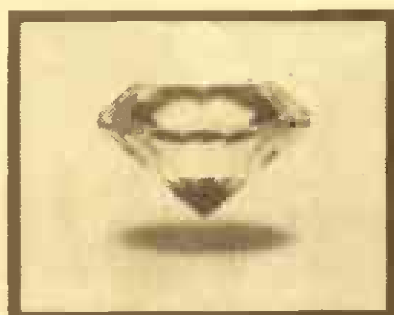
Ask about this amazing, painless method of straightening teeth through orthopedics.



For Adults and Children

Kailua Professional Gtr. Suite 503

WINDWARD DENTAL GROUP INC.
Lee Hardy, D.D.S. 261-4694



FINE JEWELRY AT YOUR MARINE CORPS EXCHANGE

- BEST SELECTION ON WINDWARD SIDE
- FREE GIFT WRAPPING
- EXCELLENT LAYAWAY PLAN
- LET OUR TRAINED STAFF HELP YOU



Caribe
Diamonds

MARINE CORPS EXCHANGE BRANCH
254-5370

MAIN STORE
615 PIKOI
523-6915

THIS AD NOT PAID FOR BY MARINE CORPSEXCHANGE

Chairman of the Board

Featuring

AVALON HILL GAMES



- FANTASY GAMES
- BOARD GAMES
- WAR GAMES

Pearlridge Phase I

(Upstairs) Near Liberty House & McDonald's

487-9445



20% Off All Salon Services
(new clients only please with this ad)

international haircutters

Koko Marina
Second Floor, Waterfront Village
395-7551

Aikahi Park Shopping Center
Kailua
254-1585

Monday-Saturday 9 am-9 pm
Sunday 10 am-4:30 pm

Monday & Saturday 9 am-5:30 pm
Tuesdays thru Fridays till 7:30 pm

BEST BUY OVERSEAS

BRAND NAME AMERICAN FURNITURE

Desks
Lamps
Pianos
Organs
Bedding
Clocks
Brass Beds

Bedroom
Dining Room
Youth Room
Sofas & Chairs
Leather
Bookcases

Burlington
Henredon
Kimball
Century
Magnavox
Thomasville
Bennington

Harden
American/
Drew
Leathercraft
Stanley
Hooker
Hickory
Lane

SAVE to 50%

Plus free USA Delivery

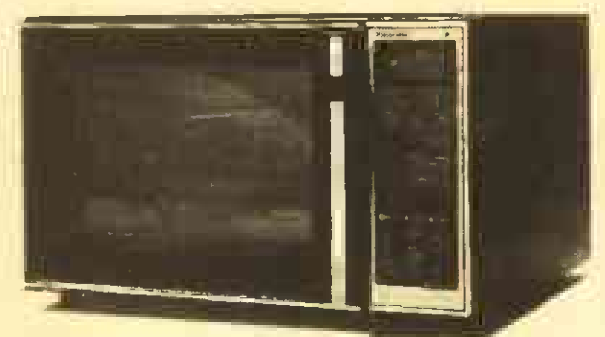
Your STATESIDE MILITARY BUYING SERVICE offers you Brand Name U.S. Home Furnishings at 35-50% savings. No taxes, storage, U.S. delivery or interest charges. Money back guarantee. Write for free DECORATOR BROCHURES (\$7.00 value) — & contact your local STATESIDE SERVICE.

STATESIDE FURNITURE CORPORATION

Box 2221 La Jolla, California 92038
Over 14,000 Satisfied Customers • Since 1967

*Linda Kinney ph. 499-1425
*Francine Kemp 422-9586
*Arlene Knapp 624-4907

Ingenius.



DIMENSION 3 MICROWAVE/ CONVECTION OVEN NE-9900

3 Different ways to cook quickly, naturally and evenly. PLUS Panasonic's Unique COOK-A-ROUND Magnetic Turntable.

1. The Convenience of **MICROWAVE COOKING**
 - Defrost, thaw and cook foods in a flash
 - Cook by Power and Time or by Temperature Probe
2. The Tasty Appeal of **CONVECTION COOKING** for Browning and Baking
 - Meats come out tender and evenly browned
 - Breads, pastries, cakes and pies done by constant circulation of dry, heated air.
3. The Unmatched Speed & Versatility of **COMBINATION MICROWAVE/CONVECTION COOKING**
 - The best of both worlds... fast cooking with eye appeal for meats, roasts, pork, lamb or poultry.

Panasonic
just slightly ahead of our time.

Available At Your Military Exchange



The standings for the Intramural Flag Football as of Oct. 10 were:

DIV I	W	L
MABS-24	5	0
SOMS	3	2
VMFA-212	3	2
1st Radio Bn	2	3
Engineers	1	4
Kilo, 3/3	1	4
DIV II	W	L
Kilo, 1/12	5	0
Navy	3	2
CommSptCo	2	2
MACS-2	2	3
HMM-265	1	3
Supply, BSSG	1	4
DIV III	W	L
Amtracks	5	0
HqCo, Bde	3	2
H&S Co, BSSG	3	2
Maint Co, BSSG	2	3
H&MS-24	2	3
VMFA-235	0	5

The standings for the Youth Athletic Football League as of Oct. 11 were:

TEAM	W	L	T
Termite	2	0	1
Pee Wee	1	3	0
Midjet	2	2	0
Bantam	1	1	1

Sportnotes

The organizational meeting for the Co-ed Slowpitch Softball League (seven men and seven women on each team) will be conducted Oct. 21 at 5 p.m. in the Station Library reading room. Games are scheduled for Thursday evenings and will start Nov. 5.

Entry data for the Sixth Annual Marine Corps Marathon is available at the Athletics Office. This Nov. 1 event will be held at the Marine Corps War Memorial in Arlington, Va.

The Varsity Boxing Team is still being formed and try-outs are 4 to 7 p.m. Monday through Friday at the Field House in Kaneohe.

Public hunting in the Kaohe Horse Pasture (Unit G) will open Saturday and continue until further notice. Bow and arrow hunting will be permitted for wild pigs, wild goats and feral sheep from one half hour before sunrise to one half hour after sunset on a daily basis.

The bag limit will be one wild pig per hunter per day with no limit on wild goats or feral sheep. All vehicular entrances leading to the Kaohe Horse Pasture will be locked, but archers may enter on foot during hunting hours.

Persons wishing to utilize this area for reasons other than hunting may call the Division of Forestry and Wildlife Office in Hilo at 961-7307 to obtain a permit and more information.

Organizational meetings for the Intramural Basketball League will be Thursday at 11:30 a.m. and 1 p.m. in the Family Theater lobby. The league starts Nov. 2 and games will be played occasionally on Saturdays and Sundays.

A wrestling coach is urgently needed for the upcoming season. Persons possessing knowledge and abilities in wrestling are requested to contact the Athletics Office at 257-3108, 3258 or 3250.

The All-Marine Judo Team is presently being formed. For more information contact Don Burkett at 257-3213 or 253-2606 after duty hours.

The Fifth Annual Toys For Tots Fun Run is scheduled for Nov. 15 at 7 a.m. at Kapiolani Park. The course is a six-mile loop around Diamond Head with the juniors (10 years and younger) running three miles. All entrants will receive a T-shirt and certificate with Olympic style medals going to the first, second and third place finishers. All runners must register no later than Nov. 8. For more information contact Paul Forney at 471-0202 or 523-1461 after 5 p.m.

The Aku Marines Dive Club will hold a meeting Tuesday in Building 566 at 7:30 p.m. Guests are invited but must be certified divers. For more information contact Tony Davis at 257-3289.

Can you meet the test?

see your Career Planner...

\$12 COUPON
For First Plasma Donation
NEW Donors Only!

GET DOWN TO ALPHA

Alpha

PLASMA CENTERS

3179 KOA PAKA

BEHIND AIRPORT RAMADA INN

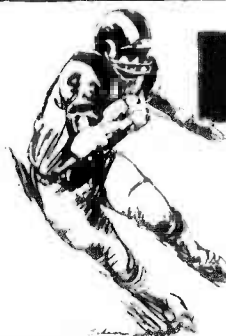
SP Ph. 836-0647

EARN AT LEAST \$17 EVERY WEEK
DONATING LIFE-GIVING PLASMA
IT'S AN EASY WAY TO HELP
OTHERS WHILE HELPING
YOURSELF

Our Hours Have Been Changed

Just For You!

M-F 10-6:00 p.m. Sat 8-2 p.m. Closed Sun



RAMS

VS

DALLAS COWBOYS

OCT. 18 — 2:35 P.M.

PLAY BY PLAY WITH
BOB STARR/DICK BASS
WITH STEVE BAILEY

KDEO
COUNTRY RADIO

HAWAII RECYCLING SERVICES

Your Kamaaina Company

with New Ideas for Today!

Let us share our ideas to help you start an effective and profitable recycling program for your office.

We offer fast friendly pick-up service in the downtown area for IBM, tab cards, computer printout, white bond, colored ledger and files. Recycling is a safe means

of disposing of confidential materials and add a

real boost to employee club funds too.

Call us for details our variety of services.

841-0965

SCHEDULED AIRLINES TICKET OFFICE (SATO)

Staffed by full time Airline personnel
To assist in your travel requirements

- Individual leave
- Family travel to the Mainland
- Neighbor Island
- International
- Dependent travel to West-PAC
- Fares
- Flight Information

Contact SATO for reservations and airline tickets at any one of our three convenient on base locations.

Pearl Harbor Bldg 487 - Tele. 422-0571
Office hours - Mon. thru Fri. 0730-1600

Camp Smith Bldg 2D - Tele. 487-1567
Office hours - Mon. thru Fri. 0800-1600

Kaneohe MCAS Bldg. 209 - Tele. 254-1564
Office hours - Mon. thru Fri. 0730-1530

SAFEWAY

Where Everything's Right

Including
The Price

PORK CHOPS

Assorted Family Pack.

Lean,
Tender

\$1.89
LB.

WHOLE SMOKED PICNIC

Hoffy, Cooks Like
Ham, Bake, Fry,
or Boil w/Beans

98¢
LB.

PORK BUTTS

Lean, Tender
Porkers
Frozen

\$1.09
LB.

SPARERIBS

Small, Lean, Tender Sides
(Meaty Country Style lb. \$1.69)

\$1.89
LB.

3# CANNED HAMS

Safeway Brand

\$6.49
EA.

SLICED BACON

Smok-A-Roma
(Oscar Mayer lb. \$1.99)

\$1.89
LB.

LINK SAUSAGE Farmer John 8 oz.

2/\$1.39

PORK STEAKS Lean, Tender

Meaty Pan Fry

\$1.69
LB.

SALAD TOMATOES

Red Ripe
U.S. No. 1 Quality

49¢
LB.
(Save 40c lb.)

GRAPES

Red Tokay, U.S. No. 1
Sweet and Juicy

79¢
LB.
(Save 40c lb.)

20TH CENTURY PEARS

U.S. No. 1 Import
From Japan
Guaranteed Sweet

89¢
LB.
(Save \$1.00 lb.)

GOLDEN RIPE BANANAS

U.S. No. 1 Quality
Full of Nutrition

55¢
LB.
(Save 20c lb.)

Viva Towels

Roll

99¢

Long Grain White Rice

Town House
2 lb.

79¢

Broccoli Spears

Bel Air 10 oz.

77¢

Ice Cream Snow Star

1/2 Gallon

\$1.79

Ice Cream Sandwich

Party Pride
6 Pack

\$1.59

Palmolive Liquid Detergent

13c Off Label
22 oz.

\$1.37

Glad Tall Garbage Bags

15 Count

\$1.59

Vlasic Dill Pickles

48 oz.

\$1.59

Head and prices in this ad are
effective Oct. 14 thru Oct. 19, 1981

540 Ala. Lanes St. Honolulu 808-277-1237 Kaimukuu St. Ala.
1121 E. Kawili St. Honolulu 1000 Kalia Dr., Kalia
2000 E. Queen St. Honolulu 4000 Kalia Highway, Kaimukuu
1000 Ala. Highway, Honolulu 20 Kaimukuu Hwy Drive, Kalia

SAFEWAY



ON THE LOOKOUT — Corporals Jim Bower (left) and Curley Jacobs of Marine Amphibious Unit Service Support Group-37, prepare for an enemy attack. The Marines were on watch during MSSG-37's Combat Readiness Evaluation Exercise held at the Kahuku Army Training Area.

Exercise tests readiness

Unit rehearses combat techniques

KAHUKU ARMY TRAINING AREA — It's that time of year again when units of the 1st Marine Brigade at Marine Corps Air Station, Kaneohe Bay invade the dusty, red hills here in preparation for deployment.

Sept. 31 through Oct. 2 was reserved for the leathernecks of Marine Amphibious Unit Service Support Group-37 to conduct their Combat Readiness Evaluation Exercise. The Brigade unit used the area to rehearse probing and infiltration techniques, along with practicing repelling the enemy.

According to Captain B.

Morgan, Unit Operations Officer, although the unit exists primarily to support deployed infantrymen, they must also be fully self-protective. He said the overall purpose of their CREE is to test how well the support men can defend themselves.

Nestled among tall trees and heavy foliage, the base camp was heavily guarded. Marines went about their duties in the field just as they would in garrison.

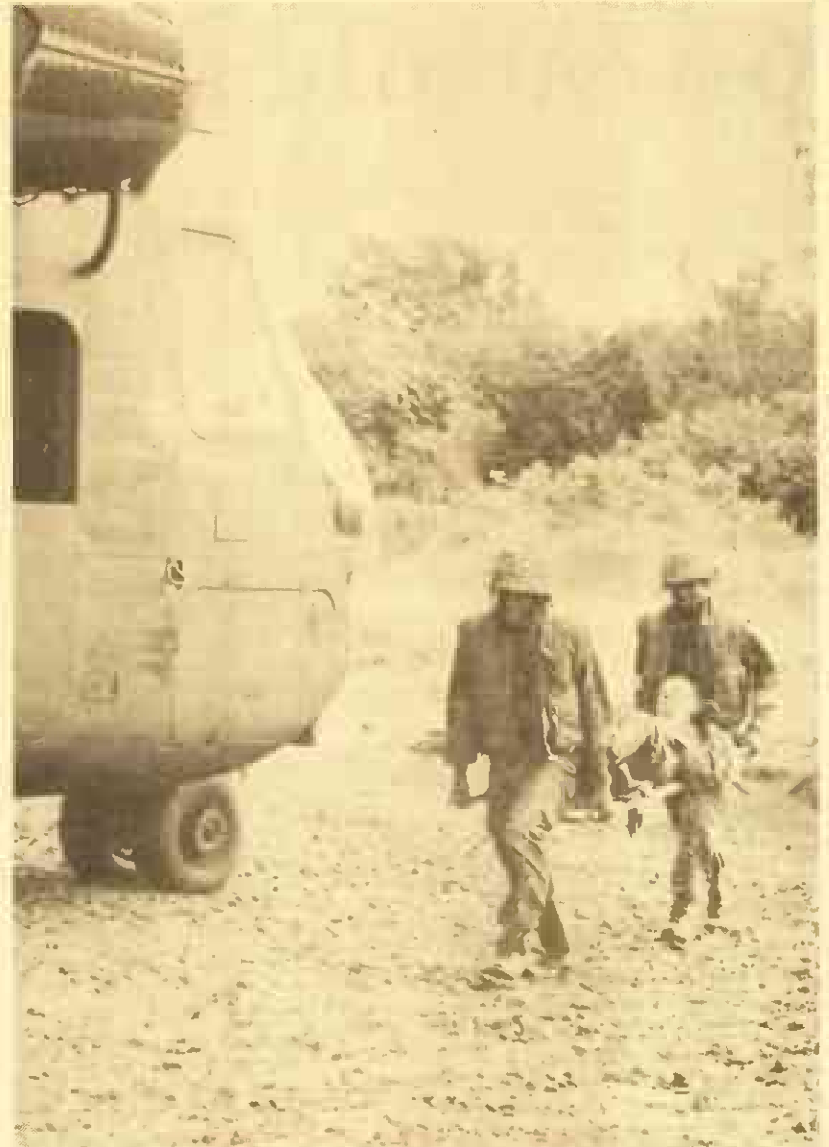
On several occasions the warning "Gas" would be sounded and gas masks had to be hastily donned. Other times the unit would be "hit" by enemy elements,

portrayed by members of 1st Battalion, 3d Marines.

The exercise culminated in a medical evacuation drill assisted by Marine Medium Helicopter Squadron-165.

After sustaining considerable

"injuries" on Davis Hill, a few miles away from the base camp, the MSSG Marines were tasked with loading their wounded comrades aboard a "chopper" and quickly getting them to medical attention.



ASSISTING THE "WOUNDED" — Two Marine Amphibious Unit Service Support Group-37 Marines rush an "injured" huddy to a waiting helicopter.

FREE FREE FREE

Receive a 25 lb. (70% gallons) of delicious and nutritious lowfat, Meadow Fresh* Milk alternative free, when Jose Lopez & Sons Wholesale Fumigators tent your house against destructive drywood termites and issue a 3 year guarantee. *(Distributed by Moni Marc)

FUMIGATE AND FIGHT INFLATION!

ACT NOW & SAVE AN EXTRA 4% upon completion.	Average 3 bdrm. home Regular Price \$595.00 Wholesale Discount -100.00 YOU PAY \$495.00
--	---

LAST CHANCE FOR (ABOVE) \$100.00 DISCOUNT



TREASURER

PEPE BLAZQUEZ Certified Commercial Applicator #A11200 3 YEAR GUARANTEE

In the event of dry wood reinfestation of the dwelling or structure fumigated, Jose Lopez & Sons Wholesale Fumigators shall treat the concerned areas to be Free of live Dry Wood Termites at no extra cost to home or structure owner during the next 3 years following initial treatment other than the original charge paid in full.
45-1048 Kam Hwy. Lic. #00379

**CALL 247-2645, 247-8461
OR HOTLINE 261-7766**

HAVE YOUR OWN PRIVATE SHOWING!

WATCH YOUR FAVORITE MOVIES
IN THE PRIVACY OF YOUR OWN LIVING ROOM!

BUY NOW & SAVE

RECEIVE **\$185** VALUE FREE WITH THE
PURCHASE OF THE HITACHI VT-8500A.

★ **\$125 FREE** Movie Rentals!

★ **\$50 FREE** Video Club membership with discounts on film rentals, equipment & accessories!

★ **\$10 FREE** Video T-Shirt!



HITACHI

Largest **FILM LIBRARY** on the island!

★ Over 1,000 titles -- with more than 250 "X" rated movies.

★ New Releases: "Stir Crazy" & "Blue Lagoon"

VIDEO CENTER



2810 Paa Street
Ph. 836-5050
418-G Kuulei Rd
Ph. 261-2022



The Video Specialty Stores

**FACTORY AUTHORIZED
SERVICE CENTER NOW OPEN!**



**"The Best
In The House"**

6 YEARS OLD. IMPORTED IN BOTTLE FROM CANADA BY HUNTER-WALKER DISTILLERS, INC. DETROIT, MICH. 48106. 40-50% ALC/VOL (80-160 PROOF) BLENDED CANADIAN WHISKY © 1981



THE BIG ISLAND BEEF CO.

coupon

GROUND BEEF

\$1 39	12-15 lbs.
per lb.	
\$1 49	8-10 lbs.
per lb.	
\$1 69	4 lbs.
per lb.	

HM

coupon

FOREQUARTER	HINDQUARTER
1.94 lb.	2.09 lb.

HALF 1.99 lb. Cut and Double
Wrapped To
Your Specifications!

FOR YOUR U.S.D.A. CHOICE

**BEEF
SALE**

**CALL
261-7113**

315 Ulunlu St., Kailua
KAILUA SQUARE

OPEN
MON.-SAT. 9:00-5:30
SUN. 9:00-12:00

—ACROSS FROM BIB'S FAMILY RESTAURANT—

6-year-old soccer star guards more than a goal

Robin Mickells, a naturally athletic and coordinated 6-year-old, is the star goalie on her "Mini Kicks" soccer team.

She was given the goalie assignment by her father and team coach, Major Hank Mickells, a military planning officer for the United States Army, because of her quick reflexes and adept ball handling. And also because she has cystic fibrosis, a degenerative inherited disease that attacks the lungs and digestive system, and often leaves Robin short of breath and unable to cope with any long extended physical activity.

ROBIN'S health problems began materializing at an early age. When she was 6 weeks old, she weighed less than she did at birth. She was rejecting her formula, and having problems with digestion. In addition, her parents had noticed a salty taste to her skin.

Cystic fibrosis is often referred to as the "great masquerader" because its symptoms mimic other common childhood diseases, and thus, may go undiagnosed. In Robin's case, she was diagnosed at first with cardiocholasia, a disorder in which the esophagus has not matured and is unable to channel food into the stomach.

HANK AND Doreen Mickells were sent home from the doctor's office with a booklet describing the disease and how it was treated. Fortunately, the book also contained a section on cystic fibrosis. In addition to poor weight gain and salty skin, the other symptoms of cystic fibrosis listed in the booklet were: recurrent wheezing, persistent coughing, fatty stools, nasal polyps, and clubbing (enlargement of the fingertips).

After reading the booklet, and because Hank had a niece who had died from cystic fibrosis, the Mickells became aware of the

possibility that they were carriers of the CF gene.

It is estimated that one in 20 Americans are carriers of the gene. When both parents are carriers, each child they conceive has a 25 percent chance of inheriting the disease, and a 50 percent chance of being a carrier.

A DOCTOR at the Fort Huachuca Army Base, Ariz., where Hank was stationed at the time, arranged to have Robin examined at the Tucson Cystic Fibrosis Center, one of 125 such clinics across the country supported by the CF Foundation specializing in diagnosis and treatment of cystic fibrosis. A simple sweat test, which measures the salt content in sweat collected on the skin, confirmed that Robin had cystic fibrosis.

There is no cure or control at present for cystic fibrosis, the number one genetic killer of children and young adults in the United States.

It is a disease that suffocates and starves its victims by producing a thick, glue-like mucus that interferes with breathing and absorption of food. As a result, CF children tend to cough frequently, tire easily, look smaller than their peers, and look underfed despite a healthy appetite and well-balanced diet. Although improved medical treatment has extended the lives of many CF children, approximately half of all CF patients do not live past their teens.

EARLY diagnosis and proper treatment has helped Robin remain fairly healthy. she has only been hospitalized twice in the past five years, a remarkable record compared to many CF children who spend up to half their lives in the hospital. Because of a high susceptibility to pneumonia and other lung disorders, Robin's health is carefully monitored and maintained by her parents. A common cold can

often result in protracted illness and severe respiratory problems.

Despite her young age, Robin knows a lot about her disease and understands why she has to undergo a demanding daily regimen of treatment. She is able to explain to her classmates that she coughs frequently because it helps remove the mucus in her lungs, but that her coughing does not spread "CF germs" since the disease is inherited, not contagious.

She also explains why she has to get up an hour earlier than most of her classmates for postural drainage treatments — a rhythmic pounding of the chest area that loosens the harmful mucus accumulations that clog her lungs. The therapy sessions are given to Robin at least twice a day by her parents, or in their absence, Robin's sisters, Kristie, 11, and Gina, 14.

IN ADDITION to the therapy, Robin must take 28 to 30 pills a day to help treat the effects of the disease. During school days, Robin is diligent about her medication routine and knows when to go to the nurses office for her pills.

Robin is fortunate to enjoy relatively good health, but for many of her CF peers, daily aerosol treatments are necessary to help breathing. Those with more severe cases of cystic fibrosis often require constant access to oxygen equipment.

In addition to providing annual grants for medical research and supporting the network of CF Centers, the Cystic Fibrosis Foundation, through its 75 local chapters, also conducts public education campaigns to encourage early diagnosis and treatment of CF and provides services for CF families. These programs and activities are particularly helpful to military families such as the Mickells who are

often transferred around the country. The 125 CF Centers located in almost every major city ensures CF families of the best medical care possible for the child.

In addition, parents groups sponsored by

local chapters are able to provide families with support with relief from the often severe emotional burdens of caring for a CF child. According to Doreen, a diagnosis of cystic fibrosis is a very devastating verdict

that can cause conflict in a family.

IN THEIR CASE, she said, Robin's illness caused her and Hank to turn away from each other at first, but that eventually, they came to realize that it was a

positive experience that encouraged their personal growth. Both are active volunteers with the Metropolitan Washington, D.C. CF Chapter. Hank, a member of the chapter's board of trustees, is active in fund

raising programs, while Doreen is instrumental in organizing parent support groups.

Through their efforts, and the contributions of private individuals through fund raising cam-

paigns such as the Combined Federal Campaign, the Mickells can share with other CF families and the thousands of CF children the hope that the answers to cystic fibrosis can soon be found.



Physical activity sometimes helps cystic fibrosis children like 6-year-old Robin Mickells clear their lungs of the thick, glue-like mucus that clogs their respiratory system. Severe breathing difficulties, however, eventually claim the lives of approximately half of all CF children before they reach their teens.

GOODYEAR SERVICE STORES

SEMI-ANNUAL INVENTORY CLEARANCE

With Savings Galore Throughout The Store!

SIZE & SIDEWALL	TIRE	SALE PRICE	PLUS FET, NO TRADE NEEDED.
A78X13 BLACKWALL	POWER STREAK	\$29 ⁹⁵	\$1 ⁵⁰
560X15 BLACKWALL	POWER STREAK	\$32 ⁹⁵	\$1 ⁶¹
560X15 WHITEWALL	POWER STREAK	\$34 ²⁵	\$1 ⁶¹
F78X15 BLACKWALL	POWER STREAK	\$36 ⁸⁵	\$2 ²⁰
F78X15 WHITEWALL	POWER STREAK	\$38 ⁷⁵	\$2 ²⁰
P15580R13 WHITEWALL	CUSTOM POLY STEEL	\$38 ⁹⁵	\$1 ⁵²
BR78X13 WHITEWALL	CUSTOM POLY STEEL	\$39 ⁹⁵	\$1 ⁸⁹
P16575R13 BLACKWALL	TIEMPO RADIAL	\$46 ⁹⁵	\$1 ⁶¹

MANY OTHER CLEARANCE-PRICED TIRES AVAILABLE — CALL FOR YOUR SIZE

GOODYEAR RADIAL SAVINGS!

Size & Type	SALE PRICE	Plus FET, no trade needed
P16575R13 Tempo Whitewall	\$49.45	\$1.61
P18580R13 Custom Polyester Whitewall	\$47.00	\$1.91
P15580R15 Tempo Blackwall	\$42.55	\$1.66
P20575R15 Custom Polysteel Whitewall	\$62.95	\$2.50
P22575R15 Custom Polysteel Whitewall	\$74.95	\$2.85
P23575R15 Custom Polysteel Whitewall	\$77.00	\$3.06

TRUCK TIRE CLEARANCE

Size & Type	SALE PRICE	Plus FET, no trade needed
700-15 Rib Hi-Miler Blackwall TT LRC	\$49.95	\$2.77
750-16 Rib Hi-Miler Blackwall TT LRD	\$68.50	\$3.53
G78-15 Tracker LT Blackwall TL LRC	\$57.00	\$3.11
800-16.5 Tracker LT Blackwall TL LRD	\$68.50	\$3.38
875-16.5 Tracker LT Blackwall TL LRD	\$72.50	\$3.82
G78-15 Tracker XG Blackwall TL LRC	\$59.75	\$3.23

GOODYEAR BATTERY CLEARANCE

CUSTOM WHEEL CLEARANCE

CAR STEREO CLEARANCE

Item	SALE PRICE
KRACO AM/FM cassette auto reverse, reg. \$139.95 Model KID 588	\$99 ^{save \$40.95}
KRACO AM/FM cassette pushbutton, reg. \$139.95 Model KID 587	\$99 ^{save \$40.95}
KRACO AM/FM 8-track pushbutton, reg. \$139.95 Model KID 575	\$99 ^{save \$40.95}
KRACO 6x9" Tri-axle speaker pr. reg. \$49.95 Model TR 369	\$39 ^{save \$10.95}
KRACO 5 1/4" round speaker pr. reg. \$49.95 Model TR 359	\$39 ^{save \$10.95}

FREE INSPECTION

15% OFF ALL BATTERIES IN STOCK. FREE INSTALLATION.

25% OFF ALL RIMS IN STOCK

Just Say 'Charge It' — Sale Ends Saturday.

KANEOHE BAY SHOPPING CENTER

Manager: Phillip G. Smith

Phone: 247-6668

Store Hours:

Mon.-Fri. 7:30 a.m. to 6:00 p.m.
Sat. 7:30 a.m. to 5:00 p.m.

Daily Bread

The menus for today through Tuesday are:

TODAY — Lunch: Soup, Swiss steak with brown gravy, French baked potatoes, fried squash, buttered lima beans and hot dinner rolls.

Dinner: Soup, pig in a blanket, stuffed cabbage, stuffed green peppers, O'Brien potatoes, french fried cauliflower and buttered asparagus.

THURSDAY — Lunch: Soup, glazed duck, turkey chow mein, egg roll with duck sauce, steamed rice, fried rice, chow mein noodles and broccoli Polonaise.

Dinner: Soup, pork roast, mashed potatoes, onion gravy, buttered mixed vegetables, simmered Navy beans and apple sauce.

FRIDAY — Lunch: Soup, stuffed beef roulade, brown gravy, Franconia, simmered peas and cauliflower au gratin.

Dinner: Soup, baked halibut, grilled salmon steak, parsley rice, Southern style greens and ginger glazed carrots.

SATURDAY — Brunch/Dinner: Soup, Yankee pot roast, mashed potatoes, natural gravy, vegetable combination and Lyonnaise green beans.

SUNDAY — Brunch/Dinner: Soup, beef steak to order, baked potatoes, sour cream and chives, french fried onion rings, buttered asparagus and buttered corn.

MONDAY — Lunch: Soup, breaded veal cutlet, baked ham, candied sweet potatoes, snowflake potatoes with mushroom gravy, pineapple and raisin sauce and green beans Nicoise.

Dinner: Tacos, chili con carne, bean and beef burritos, buttered broccoli and Spanish rice.

TUESDAY — Lunch: Soup, baked beef and noodles, peas and celery, ginger glazed carrots.

Dinner: Newport fried chicken, barbecued chicken, mashed potatoes, chicken gravy, buttered corn and Southern fried okra.

Camp H.M. Smith

TODAY — Lunch: Soup, roast beef, mashed potatoes, natural gravy, kidney beans and beets.

Dinner: Soup, breaded pork chops, buttered asparagus, buttered corn and macaroni and cheese.

THURSDAY — Lunch: Soup, beef stroganoff, buttered noodles, french fried cauliflower and buttered carrots.

Dinner: Soup, fried chicken, mashed potatoes, scalloped corn and toasted garlic bread.

FRIDAY — Lunch: Soup, Salisbury steak, mashed potatoes, mushroom gravy, buttered succotash and buttered broccoli.

Dinner: Soup, turkey pie, rice pilaf, buttered mixed vegetables and French style green beans.

SATURDAY — Brunch/Dinner: Soup, roast pork, mashed potatoes, buttered peas and carrots, buttered okra, brown gravy and dinner rolls.

SUNDAY — Brunch/Dinner: Soup, grilled, mashed potatoes, buttered corn, buttered carrots and sautéed mushroom and onions.

MONDAY — Lunch: Soup, knockwurst, home fried potatoes, cream style corn and buttered broccoli.

Dinner: Soup, veal cutlet, mashed potatoes, mushroom gravy, brussel sprouts, simmered beets and hot rolls.

TUESDAY — Lunch: Soup, spaghetti with meatballs, buttered green turnips and buttered asparagus.

Dinner: Soup, baked ham, scalloped potatoes, french fried cauliflower and stewed tomatoes.

ENCHANTED TRAVEL, INC.

IATA **ARTA**

1051 Keolu Dr. in Kailua
(Next to Dairy Queen)

261-7947

OPEN M-F 9:00-5:00, SAT. 9:00-12:00

Rent a Washing Machine or Dryer

\$13.50 a month

SERVICE INCLUDED
WE PICKUP AND DELIVER

PH. 847-1344

TW SYSTEMS
2522 Rose St. in Kailua
off Middle St.

MAINLINER and TRAVEL HOLIDAY Award Winners

L'Auberge

French Cuisine



Superb Dining In A
Charming Country
French Manner

RESERVATIONS
AFTER 2 P.M.

262-4835

Open:
Wed. thru Sun.
6 p.m. to 10 p.m.

117 HEKILI
STREET,
KAILUA

Your Hosts
Marcel & Elvi Baltzer

Kramer's

IT'S A MAN'S WORLD
SINCE 1939

MID MONTH SALE.

Fashion JEANS	SILKIE SHIRTS	KNIT SHIRTS	"Ocean Pacific" BIKE SHORTS
12 ⁹⁹ & 16 ⁹⁹	9 ⁹⁹	12 ⁹⁹	9 ⁹⁹
Reg. to 28.00 Shorts, slacks, jeans, pants, shorts, skirts, blouses, sweaters, etc.	Reg. to 26.00 Short, sleeveless, button front style in assorted fashion prints and colors. Men's sized S-XL	Reg. to 24.00 Short, sleeveless, pull over style in handsome assorted colors. Men's sized S-XL	Reg. to 18.00 Assorted selection of fashion shorts in favorite solid colors. Men's sizes 29-38

660 KAILUA ROAD

Sale October 15-17

See your Career Planner

You'll get straight talk. Answers to your questions. And a fair look at all the Corps has to offer

1/3

GySgt Viar C.W.
257-2673

3d AAV

Sgt Stewart
257-2694/3537

H&MS-24

Sgt Detzel
257-2486

HMM-262

GySgt King
257-2489/3248

VMFA-235

GySgt Mitchell
257-2630/2904

SOMS

Sgt Romero
257-3439

2/3

GySgt O'Guin
257-2142

3d Recon

Sgt Piche W.E.
257-2758

MABS-24

Sgt Zeek
257-3693

HMM-265

SSgt Sult
257-2777

1st Radio Bn

GySgt Fairbanks
257-2725

HMH-463

Sgt Bendon
257-2208

Stay Marine.

You can count on the Corps.



Everyone's covered.

Medical Care Low cost medical care is available for the entire family. Plus you don't have to pay insurance premiums for this coverage either.

Retirement With just twenty years in, you retire at half base pay. With 30 years, you're up to three-quarters base pay. That's a retirement package few unions or private industries can beat.

Education For members of the Corps, tuition assistance programs are there to help you, if you can qualify. In some cases, 100% of tuition costs are picked up by the Corps.

Job Security And one of the best ways the Corps has you covered is with a job you know you can count on. That means no lay-offs. No factory closings. No phase-outs of jobs. You know the Corps will be here tomorrow. It's stood the test for over 200 years.

Add them all up: You certainly have a load of good reasons to...

Stay Marine.



Localmotion

K-BAY OFFICERS' CLUB

TODAY — Lunch in the Pacific Room from 11 a.m. till 1 p.m. features special, hot carved sandwiches, soup and salads. Mongolian barbecue on the Lower Lanai from 6 till 8:30 p.m.

THURSDAY — Lunch in the Pacific Room from 1 a.m. till 1 p.m. Beefeaters Nite from 6 till 8:30 p.m. featuring steamship round, a seafood item, rice or potatoes, vegetable and a salad bar.

FRIDAY — Lunch in the Pacific Room from 11 a.m. till 1 p.m. Happy Hour in the Tapa Bar from 4:30 till 6:30 p.m. Mongolian barbecue and steak out on the Lower Lanai from 6 till 9 p.m. "Wood & Brass" play in the Tapa Bar from 8:30 p.m. till 12:30 a.m.

SATURDAY — King crab and hotel round of beef with salad bar rice, potatoes, vegetable, rolls, coffee and iced tea.

SUNDAY — Champagne Brunch in the Pacific Room from 10 a.m. till 1 p.m. with a variety of breakfast specials and a complimentary glass of champagne. A mini buffet line is also featured with a variety of breakfast specials. In the evening Prime Rib Buffet with all the trimmings.

MONDAY — Lunch in the Pacific Room from 11 a.m. till 1 p.m. Join us Monday through Friday for lunch specials, hot carved sandwiches, soup and salads. Monday evening the dining room is closed. During football season, the Tapa Bar will open from 4:30 till 8 p.m. Half time prices mean half off on all drinks.

TUESDAY — Lunch in the Pacific Room from 11 a.m. till 1 p.m. Tuesday evening the dining room is closed. The Tapa Bar opens from 4 till 10 p.m. Happy Hour is from 4:30 till 6:30 p.m. Pupus and popcorn are available at the bar.

K-BAY SNCO CLUB

TODAY — Luncheon special is pork chops. Family Night Buffet is served from 5:30 till 8:30 p.m.

THURSDAY — Luncheon special is barbecue ribs. Mongolian barbecue is served from 5:30 till 8:30 p.m. "Mohair" plays from 7:30 till 10:30 p.m.

FRIDAY — Luncheon special is fish and chips. Aloha Happy Hour is from 4 till 6 p.m. Candlelight dining and peel and eat shrimp are served from 6 till 9 p.m. "Wood Rose" plays from 9 p.m. till 1 a.m.

SATURDAY — Prime rib and crab is served from 6 till 9 p.m. "Dave West" plays from 9 p.m. till 1 a.m.

SUNDAY — Buffet Brunch is served from 10 a.m. till 1 p.m. Cook your own steak over a charcoal grill from 4 p.m. till 7 p.m.

MONDAY — Luncheon special is Mexican plate. Happy Hour is from 5 till 6 p.m.

TUESDAY — Luncheon special is hot turkey sandwich. Happy Hour is from 5 till 6 p.m.

WINDWARD ENLISTED CLUB

TODAY — Lunch from 11 a.m. till 1 p.m. Dining room opens from 5 till 8 p.m. D.J. and Video Rock n Roll in the Moongate Lounge from 7:30 till 11:30 p.m.

THURSDAY — Lunch from 11 a.m. till 1 p.m. Dining room opens from 5 till 8 p.m. "Country Lane" plays in the Moongate Lounge from 7:30 till 11:30 p.m.

FRIDAY — Lunch from 11 a.m. till 1 p.m. Dining room opens from 5 till 9 p.m. with a prime rib special and prime rib and crab special. "Excaliber" plays rock n roll in the ballroom and D.J. in the Moongate Lounge from 8 p.m. till midnight.

SATURDAY — Dining room opens from 5 till 9 p.m. with prime rib special and prime rib and crab special. "Pure Energy" plays in the ballroom and D.J. in the Moongate Lounge from 8 p.m. till midnight.

SUNDAY — Club opens from 2 till 8 p.m. with the dining room serving dinner from 5 till 8 p.m.

MONDAY — Lunch from 11 a.m. till 1 p.m. Dining room opens from 5 till 8 p.m. with Italian Nite all the spaghetti you can eat. Monday Night Football with free popcorn and Happy Hour prices from 6:30 till 8:30 p.m.

TUESDAY — Lunch from 11 a.m. till 1 p.m. Dining room opens from 5 till 8 p.m., with all you can eat smorgasbord. D.J. and Video Rock n Roll in the Moongate Lounge from 7:30 till 11:30 p.m.

Feeling smart?

Education Programs what does the Corps offer?

Formal programs?

College programs?

Correspondence courses?

Good questions!

For good answers...

see your Career Planner... he can do you some good.



THE FUTURE IS IN FLORIDA

Now is the time to buy a beautiful 10,000 sq. ft. homesite in any one of eight spectacularly developed Florida communities. General Development Corp., one of the country's largest community developers and homebuilders — offers homesites starting at \$9295 with a low down payment and interest rates as low as 8%. If you wish you had purchased in Hawaii five years ago, you'll find Florida is the answer for you today.

U.S. Properties, Inc.
Century Center
Suite 3601
1750 Kalakaua
946-2148



Want ads are people movers

Want ads move people into homes and apartments in new neighborhoods. They also move people up to better jobs and better forms of transportation.

Read the classifieds for fast results.

235-5881 or 622-3966

• 10 CEMETERY PLOTS

HAWAII Memorial Park cemetery plot \$1000. Call 668-1194 ask for Helen.

LOT for sale Port Charlotte, Fla. size 80 x 120 List price \$8600, Sale Price \$7500 Ph. 847-6723.

• 20 LOST & FOUND

FOUND: Wedding band left at K&L Auto Parts in Kailua 1 1/2 months ago. Come and identify. 261-1357.

FOUND: Set of keys, Shoreline, Kailua, 9/27/81. Call to identify. 261-1357.

• 25 PERSONALS

If you want to drink, that's your business. If you want to stop, that's ours. Alcoholics Anonymous. Ph. 946-1438

• 25 PERSONALS

SECRET Mormon Temple Rituals of Late exposed. For information write: P.O. Box 1493, Kaneohe 96744

60 RETIRED Military male, seeking mate for companionship any age, any race. Call after 4 p.m. 941-6790

"DIAL-A-THOUGHT" 254-3245; Free Bible Lessons. 254-3132

HAWAIIAN Swinger Magazine, Discreet Instructions. Send \$3.00 to Box 650-C, Waimanalo, HI. 96795

• 25 PERSONALS

WANTED new wife. Nice looking, prosperous, businesswoman, seeking a sweet faced lady, small family O.K., 30's to 40's. Send information, prefer photos, telephone number, to Mr. James Thompson at P.O. Box 222, Kaneohe, Hawaii, 96744.

MESSAGE by appointment Ph. 623-7961

• 25 PERSONALS

DARE to go bare Nudist Park information & free visit, write P.O. Box 8417, Hon., HI. 96815

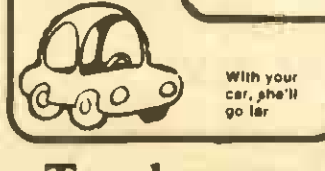
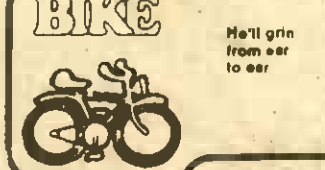
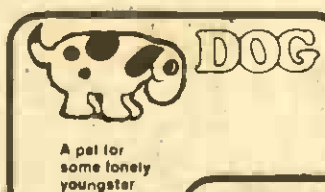
• 35 PROFESSIONAL SERVICES

FELIPE Yard and Housecleaning. Call 261-5050 between 2:00 and 8:00 p.m.

RETIREE Dependable Yard Service Call 262-7588

OVERWEIGHT?
WANTED: 100 overweight people to try our new product and make money.
100% Guaranteed.
262-5542
Phone for more information

WANT TO SELL IT?



To place an ad . . .
CALL 235-5881
or 622-3966

Paradise Pastimes

WITHIN THE GATES — The Koolau Players will present "The Boyfriend," a musical, Friday, Saturday, Oct. 23 and 24 at the Boondocker.

The Boyfriend is a semi-comical love story set in the Roaring '20s at a girls' finishing school on the Riviera in which at the stroke of midnight, everybody proposes to somebody.

All performances begin at 8 p.m., and tickets are \$5.50 for adults on opening night and \$4 for children 12 and under. Prices are subsequent nights are \$4 for adults and \$3 for children.

Tickets can be purchased at the Special Services Office on the following days:

Day	Time
Thursday	10 a.m.-2 p.m.
Monday	10 a.m.-2 p.m.
Oct. 22	10 a.m.-2 p.m.

WE BUY ...

**GOLD
SILVER
WATCHES
DIAMONDS
DENTAL GOLD
U.S. & FOREIGN COINS**

PRESTIGE
Now At 3 Locations

KANEOHE 46-216 Kahuhipa St. 247-8477
AIEA Aiea Med. Bldg. Suite 701 488-7556
HONOLULU 746 Kapahulu Ave. 735-2368

KDEO COUNTRY RADIO

Official Top 10 Songs

LAST WEEK	THIS WEEK	TITLE	ARTIST
2	1	Party Time	T.G. Sheppard
3	2	Step By Step	Eddie Rabbitt
4	3	Takin' It Easy	Lacy J. Dalton
7	4	Hurricane	Leon Everette
5	5	Today All Over Again	Reba McEntire
6	6	It Don't Hurt Me Half As Bad	Ray Price
8	7	I'll Need Someone To Hold Me When I Cry	Janie Fricke
9	8	Never Been So Loved	Charlie Pride
11	9	Chicken Truck	John Anderson
13	10	My Baby Thinks He's A Train	Roseanne Cash

Listen to **BILLBOARD** Magazine's Top 40 Country Songs Saturdays and Sundays at 9 a.m. on

KDEO Country Radio AM 94

The Best of Country, from the Country, 24 hours a day.

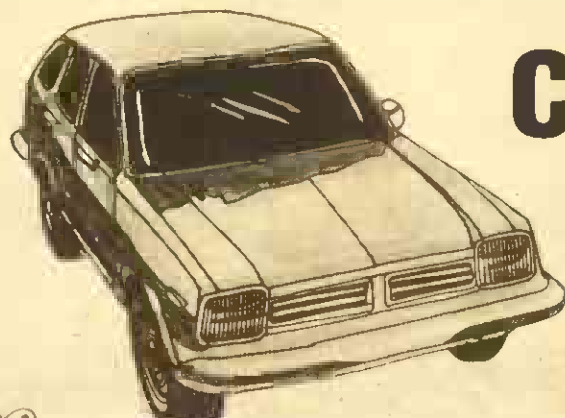
NOTICE! SATURDAY SPECIAL

This Saturday, we're "rolling back" our classified private party ad rate to:
\$1.40 per line (plus 4% tax)
when you call between the hours of 9:30 a.m.-12:30 p.m. on Oct. 17.

We'll be waiting to hear from you!

PHONE 235-5881

For the Few and Proud



CAR TINTING:

Any Car
for Only

\$98.95

CALL TODAY!

247-8595

Lumar
Solar control window film

- All Legal colors available
- Reg. price \$135-\$175
- Please mention this AD when making your reservation to assure your Special Price!

45-1021 Kam. Hwy., Kaneohe

KELLI LEE'S FRIENDSHIP UNLIMITED

P.O. Box 10700, Honolulu, HI 96816-0700.

FIND YOUR OWN SPECIAL FRIEND

To print a letter: send \$17.00 for the first 25 words or less (plus 75c for each extra word). To answer letters: enclose \$4.00 with each letter you want forwarded (or three letters for \$10.00). Letters to members should be placed in separate unmarked envelopes with the identification number of the member clearly marked on the back of the envelope. Kelli Lee reserves the right to edit or reject any copy.

M145: Oriental, 28, 5'6", 130 lbs. Sincere, mature, aspiring professional with sense of humor. Good looking and well-groomed. Enjoys photography, sports, dining, the Arts & animals. Seeks sincere, attractive, mature person with similar interests/background.

M142: Handsome Oriental, 21, 5'7", 145 lbs. Enjoys life, sports, music & the outdoors. Wishes to meet warm attractive lady 19-23 yrs. old.

M138: Oriental, handsome, hard working bachelor, 5'4", 155 lbs. Likes to go to movies and discos. Would like to dine & have pleasant conversation with a sincere Oriental woman.

GENTLEMEN

M137: 30 yr. old local male, health minded. Enjoys good music & movies. Wishes to meet attractive, slim, Oriental girl who values sincere friendship.

M135: Caucasian, 30s, 5'10", 180 lbs., quiet, gentle, sensitive & sensual. Enjoys reading, movies, quiet evenings at home & an occasional "night on the town." Seeks petite woman interested in a long term relationship, possibly marriage. Will answer all.

M134: Caucasian, 41, 5'10", 165 lbs., likes exercise, walks by the beach, & all kinds of music. Non-drinker, non-smoker.

LADIES

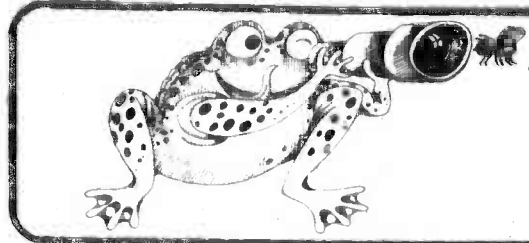
M132: Caucasian executive, 33, 5'10", 165 lbs. Enjoys conversation, dinner, plays & travel. Sports — just swimming, sailing. Well-groomed, stable & secure. Wishes to meet attractive, well educated woman 28-33 in good career.

M131: Eurasian male, 37, 5'11", 170 lbs., warm, sincere & stable. Enjoys movies, dining, sports, cards & games. Seeks warm, affectionate, attractive female.

M124: Discreet gentleman, Oriental, 50s. Seeks gentle lady 30s or 40s to share the joys of life, i.e., music, shows, dinner, sports, etc.

L221: Attractive Caucasian, 43, 5'4", 120 lbs. Enjoys listening to music, long walks, playing cribbage. Beginning racquetball player.

L211: Attractive, slim Oriental widow, 40s, seeks dancing companion for ballroom style dancing. Prefer same age, sense of humor, and reasonable coordination.



It's not hard to find what you're looking for.
Just check the great bargains in the classifieds.

235-5881 or 622-3966

35 PROFESSIONAL SERVICES

CABINETS & Counters
falling apart — need
shelves or custom work?
Free Estimates 395-8336
Creative Woodwork & Design

YOUNG Man will serve as
companion aide/chauffeur
etc. Exp. Send Ph. best time to
call Box 29124 Hon., HI 96820

CARPENTRY by Al
Free Estimates
Ph. 235-5658

**PREGNANT
AND
WORRIED?**
WE'LL HELP
FREE P.G. TEST
MON-WED-FRI. 8:00 to 12:00
262-2171 or 622-1532

"ISLAND-Wide Masonry"
Patios, sidewalks, steps,
driveways, block wall, stone
wall, stucco, fire places, very
reasonable. Free est., 671-
4942

**MAID
SERVICE**
Feather Dusters
of
Hawaii
Phone 395-0022

CLEANING Services Resi-
dential Commercial 521-
2337 Res 262-0787

WINDWARD Handyman
Service. NO job is too small!
Carpentry, plumbing, repair,
rental maintenance. FREE
Estimates. Call 254-1987

**CLEAN OUT
LEFTOVERS IN YOUR
ATTIC BEFORE THEY
START A FIRE
SELL THEM
IN A HURRY BY
FAST PROMOTION
IN A WANT AD.
EVERYONE READS &
DEPENDS UPON**

Classifieds

**ADS TO GET
DESIRED AND
SPEEDY RESULTS**

Ph. 235-5881
or 622-3966

RECEPTIONIST

Immediate opening for bright, energetic and
multi-talented individual. Must be responsible,
neat, punctual and able to cope with stressful
situations. Opportunity for advancement, two
previous receptionists have been promoted.
Benefits include medical and dental coverage,
employer-paid life insurance, sick leave and
profit sharing.

Call Ken Berry,
Sun Press, 235-5881

ADVERTISING REPRESENTATIVE
Excellent career opportunity in advertising sales
with progressive suburban newspaper. Must be a
perceptive and creative self-starter. Good salary and
commission package plus dental & medical benefits.
Profit sharing. Sales experience helpful but not
necessary. Contact Lois Young, Advertising
Director, for appointment.

SUN PRESS
46-016 Alala St.
Kaneohe, HI 96744
Ph. 235-5881

**TECHNICIANS
ENGINEERS
RADCON
ELT's
I&C
ETC**

**PUT YOUR
EXPERIENCE TO WORK**

Become a valuable member
of a growing team. We provide a
generous benefits package and excellent
advancement. NGS, the premier technical and
professional assistance to the nuclear and non-nuclear
industries across the U.S.

Call or send resume to:
NUCLEAR SUPPORT SERVICES, Inc.

Bob Garland
31A Broadway Square
Hawthorne, NJ 07030
201-523-2070

Don Romine
407 South 233rd St.
Suite 108
Federal Way, WA 98003
206-872-0151

— an equal opportunity employer —

"Busybodies"
— LET US DO IT! —
Cleaning, water plants,
feed dogs, tutor, painting,
wash windows, shopping,
visit elderly, parties, etc. etc.
537-4658, 261-4966

CARPETS & Hardwood
flooring, sales & installation.
Save on discontinued stock.
Call Frank, 261-2233

DIVORCE
with attorney
\$90 533-4533

SEWING Machine Repairs
All Brands
We Pick up & Deliver
Call Raymond's 696-6449

ECONOMY SERVICES You
name it, we do it! Yards, trees,
hauling (5 ton) Satisfaction
guar. Kendall 293-8315

**PAINLESS
CHIROPRACTIC**
FREE EXAM
CALL
Dr. Bart Smith
at 526-0426

WINDWARD WOODWORKS
additions, alterations,
repairs, & cabinetry. FREE
Estimates 239-5419.

MAINTENANCE EXPERIENCE
Yard Service clean-up
Call J.B. at 261-1496

**IRONING
SERVICE**
pickup & delivery
in Kailua
flat rate
Monday-Friday 8:00 a.m. - 4 p.m.
ask for Charlie 261-3617

LIGHT hauling,
reasonable rates.
Call 688-2287

HUGS Yard Maintenance
Quality work, fair prices.
We care and it shows.
Husband and wife team.
Call 261-3845

**WEIGHT LOSS*
AEROBICS* NUTRITION
HYPNOSIS**
New Book Available
FOR RECORDED MESSAGE
PH. 377-5547

**KAILUA Masonry - Additions,
Stairs, Tile walls, Pools, Patios,
Driveways. Free Estimates.
Very reasonable. Call 261-
3584**

**PAINTING, CLEANING
(office or home)
GENERAL REPAIR**
at the LOWEST rates
ANYONE can afford!
6 years experience
FREE ESTIMATES
PH. 521-2541

WALLACE Garden Service
Gen. yd. maintenance, trim
hedges/shrubs, remove
rubbish. Hawaii Kai-Kahala.
FREE EST. 395-1929

SECRETARIAL SERVICES all
forms of typing incl. Medical
& legal. Call Linda 254-4823

I LOVE TO TYPE cruises at 80
wpm, fast & accurate service.
Call 833-6288

DESIGNER custom-made, all
types of garments and
alterations. Ph. 262-4949

PARKER BOOKS Used
paperbacks, new & collectible
Comics. Buy, sell, trade. 908 A
Lehua St. Pearl City. Hours
Tue-Fri. 10-6 p.m. Sat./Sun.
10-5 closed Mon. 456-4996

45 SCHOOLS & TRAINING

PIANO LESSONS Your home
or mine. Kailua area. Call 262-
5152

BILL Woolsey Swim School
offering after school swimming
lessons. Call 239-5439 or
239-8182

PIANO Lessons given by
experienced pianist. Call 235-
3079

GUITAR & Voice Lessons
Professional. Boy, sell, trade. 908 A
Lehua St. Pearl City. Hours
Tue-Fri. 10-6 p.m. Sat./Sun.
10-5 closed Mon. 456-4996

URGENT - PIANO Lessons
John Scholten
235-2010 or 247-6010

**HARMONY
GUITAR STUDIO**
All Styles • All Levels
Speed Learning Techniques
PRIVATE - GROUP LESSONS
CALL 235-3388

PIANO Lessons, my home, BA
in music, experienced, Mililani
Tuesdays & Thursdays. Ph.
623-0860

MILITARY dependents of
California & Hawaii. The
Magic Hula Studio offers Hula
classes in Modern & Ancient
Dances & Polynesian dances
too. Open for registration at
the CHR Building. Ph. 945-
1133 or 737-1306. Instructors
Rose Joshua and Lorraine
Daniel.

HONOLULU Music Institute
Group and private instruction
in Guitar/Piano/Cello/Wood-
winds/Violin. Honolulu 521-
1515.

STAINED GLASS CLASSES. 4
wk. course. Excl. discount. Ph.
487-1343 days or eves

**Hawaii Mabi
MATHEMATICS
LEARNING CLINIC**
Individual Counseling
By Appt. 261-8106

**XMAS MONEY
MILITARY, SINGLE,
MARRIED OR
MILITARY WIVES**
Earn money now in take that Xmas
trip home for the holidays. Or for
those much desired Xmas gifts.
Work part-time for our discount
outlets in sales or delivery
departments of stereo, TV,
microwave, other appliances. No
experience necessary. \$30 to 10
p.m. minimum salary or pay plan
with benefits.

PH. 833-2228
Ask for Chris

45 SCHOOLS & TRAINING

**SPELL WITH PHONICS
IMPROVE READING**
Easy Phonetic Method Beginning
Remedial reading. Grammar
comprehension. Any level. K. Adult.
Individual tutoring. Qualified
experienced teachers.
262-7242

50 BUSINESS OPPORTUNITIES

THE GLASS SHACK, 25 yr.
old, cottage co., manu. glass
& resin gifts. \$7500 incl. glass,
work counters, machinery &
active accounts & instruction.
Call 261-3918

MAIL ORDER Opportunity,
start a profitable home
business w/out experience or
capital. FREE info! R&D P.O.
Box 5672, Honolulu, HI 96816

**DISTRIBUTORS
CHER BELI
ALOE VERA
PRODUCTS
FANTASTIC
OPPORTUNITIES**
235-8395 9 a.m.-5 p.m.

**DO YOU recognize
OPPORTUNITY** when you see
it? Call 833-5821 eves. 6-9 p.m.
Mon-Fri

**IF YOU are presently
employed, over 21, are looking
for a way to supplement your
income & have ambitions to
break up your desires call 254-
4145**

HOME Decor... If you ever
sold, are selling by party or
individually & want to increase
your income \$200 per week
Ph. Bob 672-9892

EARN EXTRA INCOME spare
time, call for appointment
Eves. 5-8 p.m. 262-4729

**WORLD BOOK ENCYCLO-
PEDIA OWNERS** Mililani
area only. You may be
interested in part time or full
time sales position with us. If
so, please call Ike Ickan for
interview. appointment 531-
8222, 523-3467

60 HELP WANTED MALE & FEMALE

**OFFICE/10 KEY
SOME NO EXPERIENCE**
OK/Type 40
JOB CENTER
Call Jackie at 487-3850

MODELS Needed to model for
good Agency. Mainly for T.V.
commercials or fashion
modeling. Children Welcome.
Morgan Talent. Ent. 944-2035

KOKUA Employment Service
767 Kailua Rd., Rm. 207
Kailua, Hawaii

DRIVERS WANTED
WINDWARD RESIDENT (1)
EWARD RESIDENT (1)
CENTRAL OAHU RESIDENT (1)
Delivery and check-up of local
sports magazine. Work every 5
days - 2 hours at a time. \$100
for the term. Must have car.
Call Chip at 732-7655 evenings
best time

WORK DAILY - PAID NIGHTLY
30 people needed for radio
station's promotion to do lite
delivery work. Drivers average
\$50 per day, for full time work.

APPLY IN PERSON
1919 Kalakaua Ave., Suite #4
Monday-Friday 10 am-5 pm

60 HELP WANTED MALE & FEMALE

ESSENCE OF BEAUTY,
operators & manicurists
wanted. Ask for Miss Roberta
944-2669

SECRETARY needed im-
mediately full-time, Campbell
Industrial Area. 682-2888

SECRETARY WANTED For
reconstruction of the
Dillingham airfield. Call 637-
7091

PART Time custodians &
utility person, \$3.35 & up. Call
for appt. 944-8211

**HOUSEKEEPERS & COM-
PANIONS** to maintain large
family home in Kailua & assist
elderly lady, but mobile lady.
Several different people
desired to support 7 day per
week schedule from 8 a.m.-6
p.m. Job involves some
cooking as well as cleaning,
laundry, ironing, etc. for family
of 5. Car required to support
minor shopping & medical
appointments. Job com-
mences in early November.
For additional information and
to schedule interviews, call
254-1515 weekdays, ask for
Alice or Jean.

OPPORTUNITY For ambitious
people write: C&N Inter-
national G.P.O. Box 88209,
Hon., HI 96815

**AVON
START YOUR OWN
BEAUTY BUSINESS**
You don't need experience to sell
quality Avon cosmetics and
fragrances. You set your own hours.
No harder your work, the more you
earn. Call 945-3266

WANTED Sales Rep. for
Hawaii Golf Magazine. Great
commissions. Ph. 422-8041

LOST your Tri-Chem liquid
embroidery instructor? FREE
services, classes and our NEW
Xmas catalog. 235-3084.
Part time job opportunities.

**KOKUA
EMPLOYMENT
SERVICE**
SEE US FOR A JOB.
767 Kailua Rd., Rm. 207
FREE COUNSELLING

TELEPHONE Solicitors, call
from your home. Will average
\$6 to \$8 an hr. 487-8232

BEAUTY SHOP
Station for rent.
Ph. 262-7562

MODELS Wanted for Demo
work. Call Beverly Brooke 942-
0555

**EARN
EXTRA MONEY**
Military & Local Wholesaler
Part Time \$30.10 per
hour. No experience needed. Shipping
service. Selling new sales & delivery
positions. Great opportunity. A
variety of assignments. Interview. Also
the buying service for clothing,
furniture, sporting goods, auto
accessories. Shipping available in
Hawaii. Pearl Harbor, Salt Lake, Waikanae,
San Diego, Burbank, Los Angeles & K&C&C
Start at \$4.10/hr. or incentive pay
plus bonus. Call Central Personnel
Office for interview.
833-4676 ask for Mary
or 947-5556

63 SITUATIONS WANTED

BABYSITTER - Experienced
mother. Monday-Friday.
Cecilia 261-3617

WILL baby sit, my home. Infant
to 2 years, experienced. Call
261-3690

QUALITY Day care in my
Kailua home. P.T.C.H. Member.
Call Sherry 261-4088

I LOVE TO IRON
Will pickup & deliver
1 Day Service. 373-3649

LIC Private pre-school
teacher. foundation incl.
fun, academic program &
excursions. Mon.-Fri. Full-time
only. Ages 2-5 yrs. 262-9455

**MILITARY
HOUSE CLEAN**
Reasonable Rates
Guarantee Inspection
FREE Estimates
CALL 422-2535
or 422-6914

NEW & Used clothes, new
jewelry & Xmas gifts, fabrics,
toys, baby furn./clothes, 8-4
Sat. 10/17/237 Wakea, Kailua
St., Kailua

GARAGE Sale, Many nice
plants, child's clothes, 328
Himani St. Kalaheo Hillsides,
Oct. 17 only.

GARAGE Sale, Oct. 17, 9 to 3
p.m. 168 Kuaia St., Aiea.
Gardens, collectibles, adding
machine, nightstand, baskets
& lots of misc.

WICKER Hassocks, coffee &
end tables, rocker, reclining
chair, deep freeze, din. rm.
table, twin frame & headboard,
diving backpack, misc. 262-
8535, 1007 Maunawili Rd.

SAT., Oct. 17, 193 Kailua St.,
Kailua. 9 a.m.-1 p.m. (No early
birds please). Desk, bedroom
set, recliner, refrigerator,
children's clothes, books,
household items, picnic table,
more!

CHRISTMAS Open House
Christmas gift ideas
Oct. 17, Sat. 9 to 5 p.m.
423 Iana St. Kailua

H/D Kenmore washer
and dryer, full size bedroom
set, bar stools, baby
basinette, lawn mower, Sun
volt amp tester, snap-on
wheel alignment machinery.
Painless auto scope, jacks
and much more. 4 drawer
file cabinet. 9 to 4 on
17-18 Oct. at 855 Kaimali
Dr., Kailua 261-3085

IRONING - Will pickup
/deliver. Flat rate. Charlie
261-3617

GUITARIST for 7 pc. part time
band. Must sing & be able to
rehearse wk. nights in
Waikanae area. 621-5783 after
5.

EXP. COLLEGE student
w/reference and car. will
babysit. Call Jon 261-6005 or
261-1324

63 SITUATIONS WANTED

EXPERIENCED TELLERS
Immediate Openings
Call 547-7155 for appointment
Pioneer Federal Savings & Loan
An Equal Opportunity Employer

WANTED!
Newspaper Area Manager
Part-Time Position

Openings in Hawaii Kai area. Work with
children. Must have van, truck or station
wagon. Good salary, gas allowance and
bonus.

Call Pat Meador, 235-5881

68 GARAGE & LANAI SALE

**MUST sell a little bit of
everything**. Fri., Oct. 16, 170
Kana St., Kailua, 7:30-4:30
p.m.

GARAGE SALE - Kaneohe
Higashi Hongwanji 45-520
Keeahala Rd. 9 a.m.-2 p.m.
Sun. 18 Oct. Plants, toys,
clothing, shave ice.

GARAGE Sale, 3 Family, 10'
wading pool, stereo equip.
Saturday, 9 a.m.-1 p.m. 859
Uluakahi St., Kailua

GARAGE Sale, Carpets,
clothing, tool bags, lots of
misc. & housewares, 845 Iliaki
St., Kailua Sat., Oct. 17.

4 FAMILY Sale, Sat. & Sun., 8
a.m.-4 p.m. Kailua. 637 Iliaki
St.

REMODELING Sale, used
sinks, counter tops, screens,
cabinet doors, small pieces of
scrap lumber, Fri. & Sat., 9
a.m.-5 p.m. Maunawili, 946
Lunaawa Pl. Ph. 261-0370

MOVING Sale - Living, dining
& bdrm. furn., small appli-
ances, plants, clothes,
washer/dryer, much more.
Sat. 9-2. 94-515 Anania Ct.
Mililani. Ph. 623-2233

MULTI Family Garage Sale
Household items, knick-
knacks, furniture & much
more. Sat., Oct. 17, 9 to 3
No early birds please. 344 Iliana
St., Kailua

MOVING Sale Everything
goes. Wood dining set,
clothing, misc. 92-5 Puwa Pl.,
Alhaki Gardens. Sat. Only. Call
254-2073

23" COLORED TV, \$100;
Exercise \$100, misc. items.
Sat. & Sun. 424 Iana St., Kailua

GARAGE SALE:
Beautiful crib, double
stroller, high chairs, car seats
& walkers all \$10 each. Port a-
crib, bassinet, rocking
horse, wooden cradle, Fisher-
Price toys. 100's of Health-Tex
& Carter's clothing - near new
sizes 0-12 yrs. 18M
typewriter, lawn mower,
heavy wicker chairs & lots of
misc. 95-203 Kaopua Ln.,
Mililani
(across from golf course)
Oct. 17 & 18, 9 to 3 p.m.
PH. 623-9863

PEARLRIDGE, Telepono, 2
bdrm. 2 bath, 27th floor view, 2
covered parking, \$550. Ph.
671-6156 or 487-5835

PEARLRIDGE, Telepono, 2+2,
utils. incl., Pearl Harbor view,
\$525. Avail. 11/1/81. 467-0423.

HAWAII Kai-Kaimala Marina, 3
bdrm., 2 1/2 bath, boat slip p. 6625.
Call 235-1989

Kaneohe: Haiku Hale, 3
bdrm. 2 bath, pool, \$485 a.m.
235-6196 or 638-8429

WAIKIKI, Harbor view,
2 bdrm., pool, call 672-4748

68 GARAGE & LANAI SALE

**MUST sell a little bit of
everything**. Fri., Oct. 16, 170
Kana St., Kailua, 7:30-4:30
p.m.

GARAGE SALE - Kaneohe
Higashi Hongwanji 45-520
Keeahala Rd. 9 a.m.-2 p.m.
Sun. 18 Oct. Plants, toys,
clothing, shave ice.

GARAGE Sale, 3 Family, 10'
wading pool, stereo equip.
Saturday, 9 a.m.-1 p.m. 859
Uluakahi St., Kailua

GARAGE Sale, Carpets,
clothing, tool bags, lots of
misc. & housewares, 845 Iliaki
St., Kailua Sat., Oct. 17.

4 FAMILY Sale, Sat. & Sun., 8
a.m.-4 p.m. Kailua. 637 Iliaki
St.

REMODELING Sale, used
sinks, counter tops, screens,
cabinet doors, small pieces of
scrap lumber, Fri. & Sat., 9
a.m.-5 p.m. Maunawili, 946
Lunaawa Pl. Ph. 261-0370

MOVING Sale - Living, dining
& bdrm. furn., small appli-
ances, plants, clothes,
washer/dryer, much more.
Sat. 9-2. 94-515 Anania Ct.
Mililani. Ph. 623-2233

MULTI Family Garage Sale
Household items, knick-
knacks, furniture & much
more. Sat., Oct. 17, 9 to 3
No early birds please. 344 Iliana
St., Kailua

MOVING Sale Everything
goes. Wood dining set,
clothing, misc. 92-5 Puwa Pl.,
Alhaki Gardens. Sat. Only. Call
254-2073

23" COLORED TV, \$100;
Exercise \$100, misc. items.
Sat. & Sun. 424 Iana St., Kailua

GARAGE SALE:
Beautiful crib, double
stroller, high chairs, car seats
& walkers all \$10 each. Port a-
crib, bassinet, rocking
horse, wooden cradle, Fisher-
Price toys. 100's of Health-Tex
& Carter's clothing - near new
sizes 0-12 yrs. 18M
typewriter, lawn mower,
heavy wicker chairs & lots of
misc. 95-203 Kaopua Ln.,
Mililani
(across from golf course)
Oct. 17 & 18, 9 to 3 p.m.
PH. 623-9863

RENTALS TO SHARE

KAILUA: Female mid 20's \$250. utl., 1 mo. dep. req. per 254-4287

KAILUA: Own room, bath, ing rm., entrance \$200 + 1/2 electric Avail. Now. Call 235-451.

KAILUA: 2 Rooms in spacious home, \$175 + \$200 plus utls. male, preferred. 261-2142

KANEHOE: Room in Yacht Club Terrace. \$210 month Ph 35-3571

KAHAI: beach house to share, \$216 plus utls. Avail. 261-2480.

KAUNAWILI: non-smoking, vegetarian, couple/single, 2 rooms \$350 mo. 946-1776

KAHAKUI: (Near Barber's Pt.) rent in 4 bdrm., 2 bath townhouse, extras include complete house privileges, pool, color TV, HBO, cable, washer/dryer, phone in room. **NON SMOKER.** Avail. immediately. \$250 plus deposit. Utls. incl. Home - 622-9890, work 471-9082

ROOMMATE LOCATORS: for listing island wide. 735-1751, fee

2 BDRM., spacious home near Camp Smith & Stadium. Quiet, gorgeous view, clean & roach free. \$200. Call 487-2638

AIEA: 4 bdrm. house, own room, \$85, 735-1751. Roommate Locators, fee

HAWAII KAI: Triangle, master bedroom \$400, single bdrm., \$200. Ph. 395-9783

TOWN: Own room/bath, furn., \$250. 735-1751. Roommate Locators, fee

SALT LAKE: Large condo, own bath, \$250. 735-1751. Roommate Locators, fee

SALT LAKE - 2 bdrm., \$250. Female only. 735-1751. Roommate Locators, fee

81 HOUSES FURN.

STUDIO cottage for single working person, utls. included \$275. Ph. 262-7426

PRIVATE Windward cottage, wide golden beach, 293-8000

WAIHAWA: 1 bdrm., avail. 11/1. Call between 1-4 p.m. only. Ph. 621-6968

WAIHAWA: 3 bdrm., 1 1/2 bath, duplex, new, nr. school. Ph. 622-1069 after 6 p.m.

82 HOUSES UNFURN.

KAHALU: 4 bdrm. well enclosed, 3 car garage, near beach & bus \$400. 239-8882

83 HOUSES PARTLY FURNISHED

EWA BEACH: near Barber's Pt. 3 bdrm., 1 1/2 bath w/solar heating \$515. 637-9770

KANEHOE: 1 bdrm. cottage \$400 mo., utls. & yard incl. prefer elderly couple w/no children. 247-8211

KAILUA: 3 bdrm., 2 bath, solar heat, block from beach, \$700 month. Ph. 262-8505

SUNSET BEACH: 2 bdrm., 1 bath, kids, pets ok. Call 638-7208

KANEHOE: Clubview, 3 bdrm., 2 bath single dwelling home \$650. Ph. 247-2085

LUNIA: New 3 bdrm. home, 1 1/2 bath, major appls., carpets. Avail. 11/1. \$570/mo. 671-1548/449-2820

KAILUA: 3 bdrm., 2 bath house, fenced yard, family room, no pets \$675. 254-1105 & 261-8886

KAILUA: Enchanted Lake: 4 bdrm., 2 bath, formal dining rm., living rm., family & rec room, fenced yard, double car garage, dishwasher, disposal, washer, dryer, ref. freezer \$1800 mo. Avail. 10/30. Call 261-2220

84 HOUSE SITTING

LOCALLY Referenced house-sitter wants lovely beachfront or pool equipped house for November. Ph. 261-2386

TOWNHOUSES PARTLY FURNISHED

KAILUA - Aikahi Gardens, quiet, immaculate, 3 bdrm., 2 1/2 bath, no pets \$575. 254-1105

KANEHOE: Club View Gardens, 3 bdrm., 2 bath, immac. cond., all appl. Lease \$550. Avail. Nov. 9. 261-7604 eves.

MAILE: townhouse 3 bdrms., 2 bath \$450 mo. Felix Olmos Realtor 422-2891

85 TOWNHOUSES FURN.

WINDWARD COVE: Large 3 bdrm., executive condo., 2 baths, pool, 2 lighted tennis courts, sauna, jacuzzi, wetbar, solar system, waterfall off back lanai. \$700 month. Ph. 261-2612 or 235-1484, Ellen.

HAIKU: Garden townhouse, 2 bdrm., 2 bath, pool, covered garage \$600. 538-3557 between 8 a.m. to 4 p.m.

87 TOWNHOUSES UNFURN.

OCEANFRONT condo apts. at Makaha, utls. incl., no Lease. From \$300. 538-7145

88 ROOMS FOR RENT

LANIKAI: share 3 bdrm. house with view, \$235 plus utls. Call 262-7969

KAILUA: room in lovely quiet family home \$225 plus utls. Ph. 261-9656

WAIMANALO: Share house/family of 2, near shp. & bus. Working elderly or student - female preferred, \$200/mo. Call after 10 p.m. 259-8423 or between 12 p.m.-5, 955-2906. Ask for Mary.

ROOMS FOR RENT

WAIHAWA: Good for single \$150 includes utls. Call 671-3189 or 637-4804 anytime.

KAILUA: working person share bath, \$100 deposit, rent \$185. 261-1478.

ROOM for rent in 3 bdrm. house, \$290 month plus utls. Kitchen privileges. Kaneohe area. Ph. 235-6271

89 VACATION RENTALS

BEACHFRONT studio near Crouching Lion. Week. Month. pool. 235-6196.

MOLOKAI: Wave Crest sleeps 4 beach, pool, \$26 per day, \$170 per week 395-6085

KANEHOE: Yacht Club, exc. 3 bdrm., 2 bath, pool, bus \$800. Available 10/21. 2 months. 235-1540

KUILIMA: 1 bdrm., apt., sleeps 4, amenities. Daily/wkly./mo. 235-1481

VACATION Rental, Kaawa. Magnificent view 2 bdrm., 1 1/2 bath + loft. Swimming pool, volleyball, \$250 per wk. Cathy Lyman 261-4332

KAILUA: 1 house from beach on private lane, charming 3 bdrm., 2 bath. Avail. Oct. 8, \$400 week. 254-4522

89 ROOMS FOR RENT

WANTED: 2 bdrm. partly furn. bdrm., enc. yd., Kan./Kailua max. \$372 mo. \$417 incl. utls. 247-1921 any hour.

PRIVATE Windward cottage, wide golden beach. Ph. 293-8000.

MAUI Condos: 1 or 2 Bdrm. Beach, pool, tennis. Rates Low! 262-2299/1-879-4654.

RENTALS WANTED

HAIRD Working, quiet nurse seeks 1 bdrm. cottage partly furn. in Kailua area. Does housekeeping, lawn work & pet care. Call Mildred evenings 262-9914. References.

APARTMENT-HOUSE finders, free listings/landlords. Ph. 735-1751 & 955-4428

89 ROOMS FOR RENT

SML. down, LOW INTEREST RATE 2 bdrm. nr. Military base. \$69,900 FS. MLS 55822 Lila Murakami (RA) 871-2995

CONV. Appraisal Price! Best Buy in Kailua! 4 Bdrm. 2 Ba. \$127,500 Fee MLS 55822 Lila Murakami (RA) 871-2995

Owner occupied Corner unit 2 Bdr. 1 Ba. w/intercom. \$68,000 FS. MLS 56932 J. Iar (RA) 677-8801

Easy to Buy! Well maintained 3 Bdrm. 1 1/2 Ba. Home. \$96,500 FS MLS # new. Carol Kukahiko (RA) 455-5852

3 Bdrm. nr. schools in Ewa 5,000 small sq. ft. Fee Simple! Only \$101,000 Mike Amuro (R) 671-2995 MLS # new

Excl. cond. nr. bch. Newly renovated FS 4 Br. 2 Ba 2 CP w/w cots. Lots extras, easy to show \$125,000 MLS new P. Perry (RA)/M. Kitter (RA) 695-8928/696-7992

1 Bdrm. 1 Bath Condo. location indicates value! \$77,500 LH MLS #56906 C. Kukahiko (RA) 455-5852

Waipahu Office 671-4511 Open 8-8 Mike McCormack Realtors

REAL ESTATE FOR SALE

DESPERATE Garden Groves \$82,000 3 Bdrm., 2 bath. Fee. Felix Olmos Realtor 422-2891

EWA: 3 bdrm., 1 bath \$450 mo. + deposit. Gori at 488-5507 day. 589-5153 eves.

KAILUA: Complete this 3 year new home to your style. Great for kids on quiet cul-de-sac with mountain to climb. View! Open House, Thurs. Oct. 15, 1223 Kuuna St. from 9 to 11:30 a.m. MLS 559254 \$165,000 Fee. Nancy Simmons (RA) Real Estate Ltd. 524-2844, 261-1305.

KANEHOE: 2 bdrm., FEE simple, townhouse, assumable 10% VA at \$56,600 part of price. Home, 239-6990, work, 257-2955/3405 ask for W.B.

SACRIFICING AN OCEANFRONT TOWNHOUSE IN KANEHOE TROPICAL SETTING. VERY PEACEFUL & QUIET. BOAT DOCK & PIER. OCEAN VIEW. 2 BEDROOM 2 1/2 BATH. END UNIT. AGREEMENT OF SALE. ONLY \$135,000 BY OWNER. CALL NOW. THIS INVESTMENT WON'T LAST LONG 526-1711 or 247-5152 (EVES.) ASK FOR GARY

KAILUA: Complete this 3 year new home to your style. Great for kids on quiet cul-de-sac with mountain to climb. View! Open House, Thurs. Oct. 15, 1223 Kuuna St. from 9 to 11:30 a.m. MLS 559254 \$165,000 Fee. Nancy Simmons (RA) Real Estate Ltd. 524-2844, 261-1305.

KANEHOE: 2 bdrm., FEE simple, townhouse, assumable 10% VA at \$56,600 part of price. Home, 239-6990, work, 257-2955/3405 ask for W.B.

Luxury 2 Bdrm. 1 1/2 Bath townhouse. A/S w/\$25,000 dn. \$128,000 LH D Lutz (R) 955-3468 mis #54283

MIKE McCORMACK, Realtors Pearlridge 498-1991

KANEHOE \$9,850 Down. Price \$142,500. 3 bdrm. Tropical. Modern 235-4442 or 955-2355

ATTENTION CITY & COUNTY & STATE EMPLOYEES

YOU MAY BE ELIGIBLE FOR THE LOWEST INTEREST RATE TODAY! EMPLOYEES RETIREMENT SYSTEM LOANS. FOR INFO CALL 488-1991

ATTENTION BUYERS - Pearlridge BARGAIN! 2 bdrm. 1 Pkg. \$69,900 LH S. Roberts (RA) 488-2098 mis #56934

ATTENTION BUYERS - Pearlridge BARGAIN! 2 bdrm. 1 Pkg. \$69,900 LH S. Roberts (RA) 488-2098 mis #56934

ATTENTION BUYERS - Pearlridge BARGAIN! 2 bdrm. 1 Pkg. \$69,900 LH S. Roberts (RA) 488-2098 mis #56934

ATTENTION BUYERS - Pearlridge BARGAIN! 2 bdrm. 1 Pkg. \$69,900 LH S. Roberts (RA) 488-2098 mis #56934

ATTENTION BUYERS - Pearlridge BARGAIN! 2 bdrm. 1 Pkg. \$69,900 LH S. Roberts (RA) 488-2098 mis #56934

ATTENTION BUYERS - Pearlridge BARGAIN! 2 bdrm. 1 Pkg. \$69,900 LH S. Roberts (RA) 488-2098 mis #56934

ATTENTION BUYERS - Pearlridge BARGAIN! 2 bdrm. 1 Pkg. \$69,900 LH S. Roberts (RA) 488-2098 mis #56934

ATTENTION BUYERS - Pearlridge BARGAIN! 2 bdrm. 1 Pkg. \$69,900 LH S. Roberts (RA) 488-2098 mis #56934

ATTENTION BUYERS - Pearlridge BARGAIN! 2 bdrm. 1 Pkg. \$69,900 LH S. Roberts (RA) 488-2098 mis #56934

ATTENTION BUYERS - Pearlridge BARGAIN! 2 bdrm. 1 Pkg. \$69,900 LH S. Roberts (RA) 488-2098 mis #56934

ATTENTION BUYERS - Pearlridge BARGAIN! 2 bdrm. 1 Pkg. \$69,900 LH S. Roberts (RA) 488-2098 mis #56934

ATTENTION BUYERS - Pearlridge BARGAIN! 2 bdrm. 1 Pkg. \$69,900 LH S. Roberts (RA) 488-2098 mis #56934

ATTENTION BUYERS - Pearlridge BARGAIN! 2 bdrm. 1 Pkg. \$69,900 LH S. Roberts (RA) 488-2098 mis #56934

ATTENTION BUYERS - Pearlridge BARGAIN! 2 bdrm. 1 Pkg. \$69,900 LH S. Roberts (RA) 488-2098 mis #56934

ATTENTION BUYERS - Pearlridge BARGAIN! 2 bdrm. 1 Pkg. \$69,900 LH S. Roberts (RA) 488-2098 mis #56934

ATTENTION BUYERS - Pearlridge BARGAIN! 2 bdrm. 1 Pkg. \$69,900 LH S. Roberts (RA) 488-2098 mis #56934

ATTENTION BUYERS - Pearlridge BARGAIN! 2 bdrm. 1 Pkg. \$69,900 LH S. Roberts (RA) 488-2098 mis #56934

ATTENTION BUYERS - Pearlridge BARGAIN! 2 bdrm. 1 Pkg. \$69,900 LH S. Roberts (RA) 488-2098 mis #56934

ATTENTION BUYERS - Pearlridge BARGAIN! 2 bdrm. 1 Pkg. \$69,900 LH S. Roberts (RA) 488-2098 mis #56934

ATTENTION BUYERS - Pearlridge BARGAIN! 2 bdrm. 1 Pkg. \$69,900 LH S. Roberts (RA) 488-2098 mis #56934

ATTENTION BUYERS - Pearlridge BARGAIN! 2 bdrm. 1 Pkg. \$69,900 LH S. Roberts (RA) 488-2098 mis #56934

ATTENTION BUYERS - Pearlridge BARGAIN! 2 bdrm. 1 Pkg. \$69,900 LH S. Roberts (RA) 488-2098 mis #56934

ATTENTION BUYERS - Pearlridge BARGAIN! 2 bdrm. 1 Pkg. \$69,900 LH S. Roberts (RA) 488-2098 mis #56934

ATTENTION BUYERS - Pearlridge BARGAIN! 2 bdrm. 1 Pkg. \$69,900 LH S. Roberts (RA) 488-2098 mis #56934

ATTENTION BUYERS - Pearlridge BARGAIN! 2 bdrm. 1 Pkg. \$69,900 LH S. Roberts (RA) 488-2098 mis #56934

ATTENTION BUYERS - Pearlridge BARGAIN! 2 bdrm. 1 Pkg. \$69,900 LH S. Roberts (RA) 488-2098 mis #56934

ATTENTION BUYERS - Pearlridge BARGAIN! 2 bdrm. 1 Pkg. \$69,900 LH S. Roberts (RA) 488-2098 mis #56934

ATTENTION BUYERS - Pearlridge BARGAIN! 2 bdrm. 1 Pkg. \$69,900 LH S. Roberts (RA) 488-2098 mis #56934

ATTENTION BUYERS - Pearlridge BARGAIN! 2 bdrm. 1 Pkg. \$69,900 LH S. Roberts (RA) 488-2098 mis #56934

ATTENTION BUYERS - Pearlridge BARGAIN! 2 bdrm. 1 Pkg. \$69,900 LH S. Roberts (RA) 488-2098 mis #56934

ATTENTION BUYERS - Pearlridge BARGAIN! 2 bdrm. 1 Pkg. \$69,900 LH S. Roberts (RA) 488-2098 mis #56934

ATTENTION BUYERS - Pearlridge BARGAIN! 2 bdrm. 1 Pkg. \$69,900 LH S. Roberts (RA) 488-2098 mis #56934

ATTENTION BUYERS - Pearlridge BARGAIN! 2 bdrm. 1 Pkg. \$69,900 LH S. Roberts (RA) 488-2098 mis #56934

ATTENTION BUYERS - Pearlridge BARGAIN! 2 bdrm. 1 Pkg. \$69,900 LH S. Roberts (RA) 488-2098 mis #56934

ATTENTION BUYERS - Pearlridge BARGAIN! 2 bdrm. 1 Pkg. \$69,900 LH S. Roberts (RA) 488-2098 mis #56934

ATTENTION BUYERS - Pearlridge BARGAIN! 2 bdrm. 1 Pkg. \$69,900 LH S. Roberts (RA) 488-2098 mis #56934

ATTENTION BUYERS - Pearlridge BARGAIN! 2 bdrm. 1 Pkg. \$69,900 LH S. Roberts (RA) 488-2098 mis #56934

ATTENTION BUYERS - Pearlridge BARGAIN! 2 bdrm. 1 Pkg. \$69,900 LH S. Roberts (RA) 488-2098 mis #56934

ATTENTION BUYERS - Pearlridge BARGAIN! 2 bdrm. 1 Pkg. \$69,900 LH S. Roberts (RA) 488-2098 mis #56934

ATTENTION BUYERS - Pearlridge BARGAIN! 2 bdrm. 1 Pkg. \$69,900 LH S. Roberts (RA) 488-2098 mis #56934

ATTENTION BUYERS - Pearlridge BARGAIN! 2 bdrm. 1 Pkg. \$69,900 LH S. Roberts (RA) 488-2098 mis #56934

ATTENTION BUYERS - Pearlridge BARGAIN! 2 bdrm. 1 Pkg. \$69,900 LH S. Roberts (RA) 488-2098 mis #56934

ATTENTION BUYERS - Pearlridge BARGAIN! 2 bdrm. 1 Pkg. \$69,900 LH S. Roberts (RA) 488-2098 mis #56934

ATTENTION BUYERS - Pearlridge BARGAIN! 2 bdrm. 1 Pkg. \$69,900 LH S. Roberts (RA) 488-2098 mis #56934

ATTENTION BUYERS - Pearlridge BARGAIN! 2 bdrm. 1 Pkg. \$69,900 LH S. Roberts (RA) 488-2098 mis #56934

ATTENTION BUYERS - Pearlridge BARGAIN! 2 bdrm. 1 Pkg. \$69,900 LH S. Roberts (RA) 488-2098 mis #56934

ATTENTION BUYERS - Pearlridge BARGAIN! 2 bdrm. 1 Pkg. \$69,900 LH S. Roberts (RA) 488-2098 mis #56934

ATTENTION BUYERS - Pearlridge BARGAIN! 2 bdrm. 1 Pkg. \$69,900 LH S. Roberts (RA) 488-2098 mis #56934

ATTENTION BUYERS - Pearlridge BARGAIN! 2 bdrm. 1 Pkg. \$69,900 LH S. Roberts (RA) 488-2098 mis #56934

ATTENTION BUYERS - Pearlridge BARGAIN! 2 bdrm. 1 Pkg. \$69,900 LH S. Roberts (RA) 488-2098 mis #56934

ATTENTION BUYERS - Pearlridge BARGAIN! 2 bdrm. 1 Pkg. \$69,900 LH S. Roberts (RA) 488-2098 mis #56934

ATTENTION BUYERS - Pearlridge BARGAIN! 2 bdrm. 1 Pkg. \$69,900 LH S. Roberts (RA) 488-2098 mis #56934

ATTENTION CITY & COUNTY & STATE EMPLOYEES

YOU MAY BE ELIGIBLE FOR THE LOWEST INTEREST RATE TODAY! EMPLOYEES RETIREMENT SYSTEM LOANS. FOR INFO CALL 488-1991

ATTENTION BUYERS - Pearlridge BARGAIN! 2 bdrm. 1 Pkg. \$69,900 LH S. Roberts (RA) 488-2098 mis #56934

ATTENTION BUYERS - Pearlridge BARGAIN! 2 bdrm. 1 Pkg. \$69,900 LH S. Roberts (RA) 488-2098 mis #56934

ATTENTION BUYERS - Pearlridge BARGAIN! 2 bdrm. 1 Pkg. \$69,900 LH S. Roberts (RA) 488-2098 mis #56934

ATTENTION BUYERS - Pearlridge BARGAIN! 2 bdrm. 1 Pkg. \$69,900 LH S. Roberts (RA) 488-2098 mis #56934

ATTENTION BUYERS - Pearlridge BARGAIN! 2 bdrm. 1 Pkg. \$69,900 LH S. Roberts (RA) 488-2098 mis #56934

ATTENTION BUYERS - Pearlridge BARGAIN! 2 bdrm. 1 Pkg. \$69,900 LH S. Roberts (RA) 488-2098 mis #56934

ATTENTION BUYERS - Pearlridge BARGAIN! 2 bdrm. 1 Pkg. \$69,900 LH S. Roberts (RA) 488-2098 mis #56934

ATTENTION BUYERS - Pearlridge BARGAIN! 2 bdrm. 1 Pkg. \$69,900 LH S

FURNITURE

MOVING — Twin bed, 6 drawer chest, 5 place dinette, recliner, Enter. Cntr. 395-0674

\$55 CASH \$55 for used furniture 537-9181 or 395-6264

EARLY American sofa & loveseat \$300. Lane recliner \$50. Call 254-2480

BEDROOM set: dresser, bureau, nite table, queen head board. \$300 for everything. G. cond. Ph. 422-7882

BEAUTIFUL King size water bed w/mirrored headboard, 1 yr. old, like new \$450 Call 623-1170.

TRUNDLE Bed. \$110 Ph. 455-7943

CUPILO Bed, \$180. 7 Drawer desk, \$30. 2 Comodes, \$70 ea. Ph. 261-3893.


KAPOLANI USED FURNITURE Sofas, wicker coffee tables, rd. wrought glass tables 7 pc. w/rt. wicker living rm set. Oriental rm. divider, beds, dresser, Columbian hand-made wall hangings, chairs & selections, much more. Come & browse 747 Kapiolani Blvd. Ewa side of Cooke & VISA honored 537-9181

NAUGAHEU Love seat and walkway recliner, excl. cond. \$150 Ph. 455-7374

PARADISE USED FURNITURE Outdoor patio chairs \$20 ea. like new wicker love seat excl. \$350. 5 pc. wicker dining set excl. \$350. 3 pc. dining set excl. \$200. 2 pc. dining set excl. \$150. 2 pc. dining set excl. \$100. 2 pc. dining set excl. \$80. 2 pc. dining set excl. \$60. 2 pc. dining set excl. \$40. 2 pc. dining set excl. \$20. 2 pc. dining set excl. \$10. 2 pc. dining set excl. \$5. 2 pc. dining set excl. \$2.50. 2 pc. dining set excl. \$1.25. 2 pc. dining set excl. \$.625. 2 pc. dining set excl. \$.3125. 2 pc. dining set excl. \$.15625. 2 pc. dining set excl. \$.078125. 2 pc. dining set excl. \$.0390625. 2 pc. dining set excl. \$.01953125. 2 pc. dining set excl. \$.009765625. 2 pc. dining set excl. \$.0048828125. 2 pc. dining set excl. \$.00244140625. 2 pc. dining set excl. \$.001220703125. 2 pc. dining set excl. \$.0006103515625. 2 pc. dining set excl. \$.00030517578125. 2 pc. dining set excl. \$.000152587890625. 2 pc. dining set excl. \$.0000762939453125. 2 pc. dining set excl. \$.00003814697265625. 2 pc. dining set excl. \$.000019073486328125. 2 pc. dining set excl. \$.0000095367431640625. 2 pc. dining set excl. \$.00000476837158203125. 2 pc. dining set excl. \$.000002384185791015625. 2 pc. dining set excl. \$.0000011920928955078125. 2 pc. dining set excl. \$.00000059604644775390625. 2 pc. dining set excl. \$.000000298023223876953125. 2 pc. dining set excl. \$.0000001490116119384765625. 2 pc. dining set excl. \$.00000007450580596923828125. 2 pc. dining set excl. \$.000000037252902984614140625. 2 pc. dining set excl. \$.0000000186264514923070703125. 2 pc. dining set excl. \$.000000009313225746115353515625. 2 pc. dining set excl. \$.0000000046566128730576767578125. 2 pc. dining set excl. \$.00000000232830643652883837890625. 2 pc. dining set excl. \$.000000001164153218264419189453125. 2 pc. dining set excl. \$.0000000005820766091322095947265625. 2 pc. dining set excl. \$.0000000002910383045661047363128125. 2 pc. dining set excl. \$.00000000014551915228305236815625. 2 pc. dining set excl. \$.000000000072759576141526184078125. 2 pc. dining set excl. \$.0000000000363797880707630920390625. 2 pc. dining set excl. \$.00000000001818989403538154601953125. 2 pc. dining set excl. \$.000000000009094947017690773029765625. 2 pc. dining set excl. \$.00000000000454747350884538651460390625. 2 pc. dining set excl. \$.000000000002273736754422693272578125. 2 pc. dining set excl. \$.0000000000011368683772213466363128125. 2 pc. dining set excl. \$.00000000000056843418861183331815625. 2 pc. dining set excl. \$.000000000000284217094305666658078125. 2 pc. dining set excl. \$.0000000000001421085471528333290390625. 2 pc. dining set excl. \$.00000000000007105427357641666451953125. 2 pc. dining set excl. \$.00000000000003552713678820833227890625. 2 pc. dining set excl. \$.00000000000001776356839410416611460390625. 2 pc. dining set excl. \$.0000000000000088817841970520830576767578125. 2 pc. dining set excl. \$.0000000000000044408920935261415386883837890625. 2 pc. dining set excl. \$.0000000000000022204460467630707630920390625. 2 pc. dining set excl. \$.00000000000000111022302338154601953125. 2 pc. dining set excl. \$.000000000000000555111511690773029765625. 2 pc. dining set excl. \$.000000000000000277555755845386883837890625. 2 pc. dining set excl. \$.000000000000000138777877922693272578125. 2 pc. dining set excl. \$.00000000000000006938893896134666451953125. 2 pc. dining set excl. \$.000000000000000034694469480673029765625. 2 pc. dining set excl. \$.00000000000000001734723474033651460390625. 2 pc. dining set excl. \$.0000000000000000086736173701682576767578125. 2 pc. dining set excl. \$.00000000000000000433680868508410416611460390625. 2 pc. dining set excl. \$.000000000000000002168404342540520830576767578125. 2 pc. dining set excl. \$.000000000000000001084202171270261415386883837890625. 2 pc. dining set excl. \$.000000000000000000542101085635130576767578125. 2 pc. dining set excl. \$.00000000000000000027105054281757630920390625. 2 pc. dining set excl. \$.000000000000000000135525271403788154601953125. 2 pc. dining set excl. \$.000000000000000000067762635701894272578125. 2 pc. dining set excl. \$.00000000000000000003388131785086363128125. 2 pc. dining set excl. \$.0000000000000000000169406589254033651460390625. 2 pc. dining set excl. \$.000000000000000000008470329462701682576767578125. 2 pc. dining set excl. \$.00000000000000000000423516473008410416611460390625. 2 pc. dining set excl. \$.000000000000000000002117582365130576767578125. 2 pc. dining set excl. \$.0000000000000000000010587911825635130576767578125. 2 pc. dining set excl. \$.000000000000000000000529395591270261415386883837890625. 2 pc. dining set excl. \$.000000000000000000000264697795635130576767578125. 2 pc. dining set excl. \$.0000000000000000000001323488978154601953125. 2 pc. dining set excl. \$.00000000000000000000006617444890773029765625. 2 pc. dining set excl. \$.00000000000000000000003308722445386883837890625. 2 pc. dining set excl. \$.00000000000000000000001654361222693272578125. 2 pc. dining set excl. \$.0000000000000000000000082718061134666451953125. 2 pc. dining set excl. \$.0000000000000000000000041359030566658078125. 2 pc. dining set excl. \$.00000000000000000000000206795152833227890625. 2 pc. dining set excl. \$.00000000000000000000000103397576410416611460390625. 2 pc. dining set excl. \$.0000000000000000000000005169878820830576767578125. 2 pc. dining set excl. \$.0000000000000000000000002584939410416611460390625. 2 pc. dining set excl. \$.000000000000000000000000129246970520830576767578125. 2 pc. dining set excl. \$.000000000000000000000000064623485261415386883837890625. 2 pc. dining set excl. \$.000000000000000000000000032311742630707630920390625. 2 pc. dining set excl. \$.00000000000000000000000001615587130576767578125. 2 pc. dining set excl. \$.0000000000000000000000000080779357630920390625. 2 pc. dining set excl. \$.00000000000000000000000000403896788154601953125. 2 pc. dining set excl. \$.000000000000000000000000002019483940773029765625. 2 pc. dining set excl. \$.0000000000000000000000000010097419703788154601953125. 2 pc. dining set excl. \$.000000000000000000000000000504870985130576767578125. 2 pc. dining set excl. \$.0000000000000000000000000002524354925635130576767578125. 2 pc. dining set excl. \$.0000000000000000000000000001262177461270261415386883837890625. 2 pc. dining set excl. \$.0000000000000000000000000000631088730635130576767578125. 2 pc. dining set excl. \$.00000000000000000000000000003155443652630920390625. 2 pc. dining set excl. \$.0000000000000000000000000000157772182633227890625. 2 pc. dining set excl. \$.000000000000000000000000000007888609131666451953125. 2 pc. dining set excl. \$.000000000000000000000000000003944304566658078125. 2 pc. dining set excl. \$.0000000000000000000000000000019721522833227890625. 2 pc. dining set excl. \$.0000000000000000000000000000009860761134666451953125. 2 pc. dining set excl. \$.0000000000000000000000000000004930380566658078125. 2 pc. dining set excl. \$.00000000000000000000000000000024651902833227890625. 2 pc. dining set excl. \$.000000000000000000000000000000123259514033651460390625. 2 pc. dining set excl. \$.0000000000000000000000000000000616297576410416611460390625. 2 pc. dining set excl. \$.0000000000000000000000000000000308148788154601953125. 2 pc. dining set excl. \$.00000000000000000000000000000001540743940773029765625. 2 pc. dining set excl. \$.000000000000000000000000000000007703719703788154601953125. 2 pc. dining set excl. \$.000000000000000000000000000000003851854852630920390625. 2 pc. dining set excl. \$.00000000000000000000000000000000192592742633227890625. 2 pc. dining set excl. \$.0000000000000000000000000000000009629637131666451953125. 2 pc. dining set excl. \$.00000000000000000000000000000000048148182633227890625. 2 pc. dining set excl. \$.0000000000000000000000000000000002407409131666451953125. 2 pc. dining set excl. \$.0000000000000000000000000000000001203704566658078125. 2 pc. dining set excl. \$.00000000000000000000000000000000006018522833227890625. 2 pc. dining set excl. \$.00000000000000000000000000000000003009261134666451953125. 2 pc. dining set excl. \$.00000000000000000000000000000000001504630566658078125. 2 pc. dining set excl. \$.000000000000000000000000000000000007523152833227890625. 2 pc. dining set excl. \$.000000000000000000000000000000000003761576410416611460390625. 2 pc. dining set excl. \$.000000000000000000000000000000000001880788154601953125. 2 pc. dining set excl. \$.0000000000000000000000000000000000009403940773029765625. 2 pc. dining set excl. \$.00000000000000000000000000000000000047019703788154601953125. 2 pc. dining set excl. \$.0000000000000000000000000000000000002350985130576767578125. 2 pc. dining set excl. \$.00000000000000000000000000000000000011754925630920390625. 2 pc. dining set excl. \$.00000000000000000000000000000000000005877462633227890625. 2 pc. dining set excl. \$.0000000000000000000000000000000000000293873131666451953125. 2 pc. dining set excl. \$.0000000000000000000000000000000000000146936566658078125. 2 pc. dining set excl. \$.00000000000000000000000000000000000000734682833227890625. 2 pc. dining set excl. \$.000000000000000000000000000000000000003673414033651460390625. 2 pc. dining set excl. \$.00000000000000000000000000000000000000183670701682576767578125. 2 pc. dining set excl. \$.000000000000000000000000000000000000000918353508410416611460390625. 2 pc. dining set excl. \$.0000000000000000000000000000000000000004591767540520830576767578125. 2 pc. dining set excl. \$.0000000000000000000000000000000000000002295883770261415386883837890625. 2 pc. dining set excl. \$.00000000000000000000000000000000000000011479418861183331815625. 2 pc. dining set excl. \$.005739709430566658078125. 2 pc. dining set excl. \$.0028698547152833227890625. 2 pc. dining set excl. \$.0014349273576410416611460390625. 2 pc. dining set excl. \$.0007174636788154601953125. 2 pc. dining set excl. \$.00035873183940773029765625. 2 pc. dining set excl. \$.000179365919703788154601953125. 2 pc. dining set excl. \$.0089682958788154601953125. 2 pc. dining set excl. \$.00448414793940773029765625. 2 pc. dining set excl. \$.002242073969703788154601953125. 2 pc. dining set excl. \$.001121036984852630920390625. 2 pc. dining set excl. \$.000560518442633227890625. 2 pc. dining set excl. \$.00028025922131666451953125. 2 pc. dining set excl. \$.00014012961066658078125. 2 pc. dining set excl. \$.00700648033227890625. 2 pc. dining set excl. \$.0035032401666451953125. 2 pc. dining set excl. \$.0017516200833227890625. 2 pc. dining set excl. \$.0008758100416611460390625. 2 pc. dining set excl. \$.000437905020830576767578125. 2 pc. dining set excl. \$.000218952514033651460390625. 2 pc. dining set excl. \$.0001094762576410416611460390625. 2 pc. dining set excl. \$.00547381288154601953125. 2 pc. dining set excl. \$.002736906440773029765625. 2 pc. dining set excl. \$.001368453223630920390625. 2 pc. dining set excl. \$.0006842266118154601953125. 2 pc. dining set excl. \$.00034211330566658078125. 2 pc. dining set excl. \$.000171056652833227890625. 2 pc. dining set excl. \$.00855283131666451953125. 2 pc. dining set excl. \$.00427641566658078125. 2 pc. dining set excl. \$.002138207833227890625. 2 pc. dining set excl. \$.00106910391666451953125. 2 pc. dining set excl. \$.00053455195833227890625. 2 pc. dining set excl. \$.0002672759791666451953125. 2 pc. dining set excl. \$.0001336379895833227890625. 2 pc. dining set excl. \$.006681899481666451953125. 2 pc. dining set excl. \$.00334094974033651460390625. 2 pc. dining set excl. \$.0016704748701682576767578125. 2 pc. dining set excl. \$.00083523743508410416611460390625. 2 pc. dining set excl. \$.000417618717540520830576767578125. 2 pc. dining set excl. \$.0002088093576410416611460390625. 2 pc. dining set excl. \$.0001044046788154601953125. 2 pc. dining set excl. \$.005220233940773029765625. 2 pc. dining set excl. \$.0026101169703788154601953125. 2 pc. dining set excl. \$.0013050584852630920390625. 2 pc. dining set excl. \$.000652529242633227890625. 2 pc. dining set excl. \$.00032626462131666451953125. 2 pc. dining set excl. \$.00016313231066658078125. 2 pc. dining set excl. \$.0081566152833227890625. 2 pc. dining set excl. \$.0040783076410416611460390625. 2 pc. dining set excl. \$.0020391538154601953125. 2 pc. dining set excl. \$.00101957680773029765625. 2 pc. dining set excl. \$.0005097884033651460390625. 2 pc. dining set excl. \$.000254894201682576767578125. 2 pc. dining set excl. \$.001274471008410416611460390625. 2 pc. dining set excl. \$.0006372355040520830576767578125. 2 pc. dining set excl. \$.0003186177520390625. 2 pc. dining set excl. \$.000159308876118154601953125. 2 pc. dining set excl. \$.0000000000


175 VANS, CAMPERS & JEEPS	ALFA ROMEO	CHEVROLET	FIAT	MAZDA	MG	PLYMOUTH	SUBARU	VOLKSWAGEN
DODGE Van, 6 cyl., std. mileage, customized 800/offer. 623-4338	'75 ALFETTA GT, must sell, excl. cond., air, 5 spd., fuel injection, headers \$1000 under book, \$3950 521-5353 or 235-0393	'76 VEGA wagon, 350 V8, Turbo 350 trans, all factory parts, needs paint \$1750 or offer Bob 624-9543	'75 FIAT, Model 128, good cond., new paint, \$1050, 622-5412 anytime.	DEMO SALE BIG SAVINGS and TRADE-IN ALLOWANCES ON ALL 1981 GLC-626-RX7 Hawaii's Oldest Mazda Dealer WHOLESALE MOTORS 808 AIRPORT MAZDA Ph. 836-1222 2999 N. Nimitz Hwy.	'73 MG MIDGET, super car, rebuilt eng., new paint, new carpet. 624-5276 after 5	'77 VOLARE 2 dr., 4 spd., p/s, p/b, a/c, T-top, BJN801 ★ \$2488 ★ SHELLY MAZDA WAIPAHU 677-0761	'80 SUBARU, GLF, 2 dr., h.d.p., 5 spd., AM/FM, air, rustproofed, moving, \$5100/offer. Ph. 488-2311	WANTED VW BUGS GOOD, BAD & THE UGLY Any condition. IMMEDIATE CASH! Top \$ immediate cash OLD PLATES OKAY Call 538-1136, 734-2834
'79 CJ5, 6 cyl., full cage, \$6000/offer. Ph. 456-4947	BMW '76 530i AM/FM stereo cassette, auto, sunroof, silver with navy blue leather interior, immac. (BC1053) \$8175 WHOLESALE MOTORS Ph. 836-1222 2999 N. Nimitz Hwy.	'75 CHEVY Nova, hatchback, good engine, some rust, \$850 after 5 p.m., 734-4028	FORD '67 MUSTANG, auto, 289 V8, p/s & brakes, excl. cond. Make offer. 734-5053	MERCURY '81 CAPRI RS TRX tires, std., fully equipped, 2500 mi., \$9000/offer. 734-7117	'79 MIDGET sharp, fun in the sun convertible (AT352) \$4475 WHOLESALE MOTORS Ph. 836-1222 2999 N. Nimitz Hwy.	'77 VOLARE Station wagon, a/t, p/s, p/b, a/c, luggage rack, BNN406 ★ \$1995 ★ SHELLY MAZDA WAIPAHU 677-0761	'74 SUBARU 2 dr., 4 spd., excl. cond., AFP398 ★ \$1768 ★ SHELLY MAZDA WAIPAHU 677-0761	'74 VW Bug, beige, 4 spd., real good cond., BPJ232 \$3895 or best offer. VIP Auto 537-5921
SALE '77 VW BUS, excellent condition, AM/FM, cassette, sink, stove, \$5500 \$474-181 until 4:30 PM ask Shonholtz	BUICK '77 CENTURY 2 dr., clean, many extras, only 27,796 mi. (HEF567) \$2875 WHOLESALE MOTORS Ph. 836-1222 2999 N. Nimitz Hwy.	'78 MALIBU 305, 4 spd., \$3600 or best offer. Call 624-9595	'65 MUSTANG, Auto, 289, new, brakes, engine good, transmission under warranty, light body work, \$2500 or best offer. Ph. 422-2861 after 5 p.m.	'76 CUTLASS SUPREME Power windows, a/t, a/c, APJ902 ★ \$1995 ★ SHELLY MAZDA WAIPAHU 677-0761	'77 CUTLASS SUPREME 2 dr. Super clean. Loaded (BCV424) \$3775 WHOLESALE MOTORS Ph. 836-1222 2999 N. Nimitz Hwy.	'77 VOLARE Station wagon, a/t, p/s, p/b, a/c, luggage rack, BNN406 ★ \$1995 ★ SHELLY MAZDA WAIPAHU 677-0761	TOYOTA '76 CELICA GT, auto, air, radio, AM/FM, low miles, \$3200. Call 293-2080 evenings ask for Alan.	'75 RABBIT 2 dr. Hatchback, 4 spd., BPT425 ★ \$1888 ★ SHELLY MAZDA WAIPAHU 677-0761
176 AUTOS FOR SALE	ALFA ROMEO '77 ALFA Romeo GT Sprint, 2 dr., AM/FM cassette, 5 spd., \$6023 \$6765 or best offer. P Auto 537-5921	'72 FORD Grande, good cond., \$1800 or offer. Call 261-5949 after 5:30 p.m.	'66 MUSTANG, 4 spd., good running cond. Best offer. Ph. 262-9545, evenings	'73 DELTA 88 4 dr. a/t, p/s, p/b, a/c, power windows, BGW183 ★ \$1488 ★ SHELLY MAZDA WAIPAHU 677-0761	'77 MGB, new paint, roll bar, rustproofed, extras \$4000 487-7479, 488-9728	'74 DUSTER 2 dr. stick shift, mags, sharp (ATE638) \$1475 WHOLESALE MOTORS Ph. 836-1222 2999 N. Nimitz Hwy.	69 TOYOTA Corona, auto, 2 dr. sdn, \$450. Call 259-7485	'72 VW CAMPER 4 spd., AM/FM, ice box, bed, closets, (ANX285) \$2175 WHOLESALE MOTORS Ph. 836-1222 2999 N. Nimitz Hwy.
ALFA ROMEO '77 ALFA Romeo GT Sprint, 2 dr., AM/FM cassette, 5 spd., \$6023 \$6765 or best offer. P Auto 537-5921	CHEVROLET '75 CAMARO, automatic, 351, air, scoop shackles, mags rims, great condition new tires \$2750 262-9966	'78 PINTO Station wagon, 4 cyl., auto., family car (AXF608) \$1975 WHOLESALE MOTORS Ph. 836-1222 2999 N. Nimitz Hwy.	'78 WAGON, mag wheels, sharp \$1250. Ph. 689-8630	MG '73 DELTA 88 4 dr. a/t, p/s, p/b, a/c, power windows, BGW183 ★ \$1488 ★ SHELLY MAZDA WAIPAHU 677-0761	'78 MIDGET, AM/FM cassette, luggage rack, no rust, excl. cond., \$3600. Ph. 455-7574.	'74 DUSTER 2 dr. stick shift, mags, sharp (ATE638) \$1475 WHOLESALE MOTORS Ph. 836-1222 2999 N. Nimitz Hwy.	77 TOYOTA Corolla Lift Back, automatic, \$2500. Call after 5 p.m. 422-2982	'72 TR6, excl. cond. \$2500/offer. Must sell Ph. 395-9367
76 ALFETTA GT 2 dr., AM/FM stereo cassette, for the pure aficionado, this is it. (ANY088) \$4975 WHOLESALE MOTORS Ph. 836-1222 2999 N. Nimitz Hwy.	'69 CHEVY wagon, 2 new tires, units well \$200. Call 262-9016	FOREIGN CARS '80 MASERATI Merak, silver, AM/FM, air, 5 spd., p/w, BCB043 \$39,950 or best offer. VIP Auto 537-5921	'72 WAGON, mag wheels, sharp \$1250. Ph. 689-8630			PORSCHE '80 924 TURBO 5 spd. silver with black leather interior, air, Grundy with AM/FM stereo cassette, power windows, Pirellas etc. 10176 mi. & like new throughout. Check the price of a new one equipped like this & you'll know why this is a buy at \$16,875 (BFY946) WHOLESALE MOTORS Ph. 836-1222 2999 N. Nimitz Hwy.	'70 TOYOTA, beautiful/little automatic, \$750. Call 239-7189	VOLKSWAGEN '73 SUPERBEETLE Volks New paint very good cond. \$2200 Peg 845-9933/262-0234
								VOLVO '73 VOLVO sta. wgn, \$3000, a/c, 4 spd., AM/FM, good interior. 18 Mpg. 254-4269.

1982 TOYOTA CELICA LIFTBACK




COME IN AND SEE US TODAY!
WAIPAHU TOYOTA
A DIVISION OF **PACIFIC INC.** 677-3161

1982



TOYOTA SUPRA
See Your Dealer For Optional Equipment

CAR AND CAR CARE



WINDWARD DATSUN

OIL CHANGE
(All Cars)
\$15.95 + tax
Includes 5 qts. of oil, filter, lube locks and hinges.

TUNE-UP
(All Cars)
\$39.95 + tax
We Service All Makes of Cars
Offer good till Oct. 31, 1981
WINDWARD DATSUN
Your Service Center.
46-151 Kahuhipa Street in Kaneohe Ph. 235-6433

UNBEATABLE!!

'79 YAMAHA 650 Special \$1575	'76 CHEVETTE Std. 726 \$1875	'75 MERCURY MONARCH 4 dr. \$1875
'80 CAMARO Berlione, Fully Loaded \$7495	SPECIALIZING IN 100% FINANCING FOR MILITARY UPON APPROVED CREDIT.	
'79 FORD LTD Brhm, air, SIK, 5627 Automatic \$2975	'75 DODGE VAN Air, automatic \$2475	'78 MAZDA Bright Red \$2975

Selling your used car? ... We pay top dollar.

DATSUN of WAHIAWA 821-0762
1912 Wilikina Dr. 621-0761

FREE!

MAKE THE BEST DEAL
on any DIESEL PICKUP

WINDWARD VOLKS
BUYERS
30 FREE FILUPS*
BONUS

CALL 262-6576
RESERVE YOUR CAR TODAY!
WE'LL FUEL YOU FOR A YEAR OR MORE

1981

CUTTER USED CARS
Formerly Jerico Auto Sales

The Only Difference Is The Name Change
... the same Sales People & Management are here to serve you.

The Working Man's Place To Buy A Car ...
where prices are down to earth and Military Financing is Our Specialty! There is also an 18,000 mile 18 Month Service Policy available on every car on our lot. Come on in & see us! ...

'70 TORINO 2 dr. V8, 4 spd., radio, mags, white oval tires, BJT872 \$795	'68 COUGAR 4 dr. V8, 4 spd., power steering, bucket seats vinyl roof, body side moulding, 9J0164 \$895	'72 COROLLA Deluxe 2 dr. 4 cyl., auto, radio, bucket seats, white sidewall tires, 9C0708 \$1395	'77 MGB CONVERTIBLE 4 cyl. 4 spd. radio bucket seats, console gauges, trunk, rack, body side moulding, sport wheels, 1C0005 \$3695
'78 CHEVETTE 4 dr. hatchback 4 cyl. auto, radio, power steering, bucket seats, body side moulding, white sidewall tires, 9PT637 \$2495	'79 DATSUN B210, 4 dr., auto, radio, bucket seats, console body side moulding, white side wall tires, 9PT842 \$3595	'77 CHEVY Monza 2 dr. V8 auto, power, stereo, bucket seats, body side moulding, sport wheels, white oval tires, 9C0270 \$1695	'76 ASPEN 2 dr., 6 cyl., 3 spd., standard, radio, body side moulding, white sidewall tires, 9JN018 \$1395

THIS COUPON ENTITLES MILITARY PERSONNEL TO RECEIVE \$1000 TO USE TOWARDS ANY NEW VOLKSWAGEN

ALA MOANA VOLKSWAGEN

Pick Your Lucky Star at SHELLY CARS

'77 MONARCH 4 dr. V8, 4 spd., power steering, air, bucket seats, deluxe instrument cluster, 1981 in full running cond. (AB0473) \$2895	'77 CHEVROLET Camaro, 4 dr., 304, 4 spd., power steering, air, bucket seats, heavy duty bumpers, deluxe side mirrors. (1T0008) \$3995	'78 FORD Mustang, 2 dr., 302, 4 spd., bucket seats, racing stripes, heavy duty bumpers, for the little that does a lot. (100429) \$2995
'80 ALC 4 dr. V8, 4 spd., power steering, air, bucket seats, 1981 in full running cond. (1T0008) \$3995	'74 HONDA Civic, 4 dr., 4 cyl., radio, bucket seats, side mirrors, even on this number today. (1T0001) \$1995	'79 TRANS AM Mustang, 2 dr., 302, 4 spd., power steering, air, bucket seats, racing stripes, heavy duty bumpers, for the little that does a lot. (1T0001) \$3995
'78 CAMARO 4 dr. V8, 4 spd., power steering, air, bucket seats, 1981 in full running cond. (1T0001) \$1495	'77 CUTLASS SUPREME 4 dr. V8, 4 spd., power steering, air, bucket seats, 1981 in full running cond. (1T0001) \$2995	'77 TOYOTA Corolla, 4 dr., 4 cyl., 4 spd., radio, power windows, 1981 in full running cond. (1T0001) \$2995

CUTTER USED CARS
Formerly Jerico Auto Sales

'78 TOYOTA COROLLA 4 dr. V8, 4 spd., radio, bucket seats, 1981 in full running cond. (1T0001) \$2995	'72 GRAND SPORT 2 dr. V8, 4 spd., power steering, bucket seats, radio, body side moulding, sport wheels, white side wall tires, 9JN018 \$1995	'76 GRAN TORINO Station wagon V8, 4 spd., power steering, bucket seats, console gauges, body side moulding, white sidewall tires, 1A10459 \$1395	'73 MUSTANG Fastback V8, 4 spd., power steering, bucket seats, console gauges, bucket seats, console, white sidewall tires, 9JN018 \$1595
'81 CUTLASS SUPREME 4 dr. V8, 4 spd., power steering, bucket seats, 1981 in full running cond. (1T0001) \$7995	'77 GRAND PRIX 4 dr. V8, 4 spd., power steering, bucket seats, 1981 in full running cond. (1T0001) \$2995	'75 FIREBIRD V8, 4 spd., power steering, bucket seats, air cond, bucket seats, console gauges, bucket seats, console, white sidewall tires, 9JN018 \$2595	'81 HONDA ACCORD 4 dr. V8, 4 spd., power steering, bucket seats, 1981 in full running cond. (1T0001) \$5995
'77 PONTIAC SUNBIRD 4 dr. V8, 4 spd., power steering, bucket seats, 1981 in full running cond. (1T0001) \$2195	'73 CUTLASS SUPREME 4 dr. V8, 4 spd., power steering, bucket seats, 1981 in full running cond. (1T0001) \$2995	'74 NOVA CUSTOM 4 dr. V8, 4 spd., power steering, bucket seats, 1981 in full running cond. (1T0001) \$1895	

Only one ultra light 100's gives you the Merit taste idea.



Only
5 mg
tar

MERIT Ultra Lights

Regular & Menthol

Warning: The Surgeon General Has Determined
That Cigarette Smoking Is Dangerous to Your Health.

© Philip Morris Inc. 1981

5 mg "tar," 0.5 mg nicotine
av. per cigarette by FTC method