

HAWAII MARINE

Voluntary payment for delivery to MCAS housing/\$1 per four week period

VOL. 10 NO. 38

KANELOE BAY, HAWAII, SEPT. 23, 1981

SIXTEEN PAGES

Commandant addresses issues

by Gysgt Theresa Gallagher

HICKAM AIR FORCE BASE, Hawaii — "It's a national problem, and a very serious one," said Commandant of the Marine Corps General Robert H. Barrow responding to a drug abuse question during a press conference here Sept. 17.

The press conference was the beginning of his day-long visit with Hawaii-based Marines. The visit was in conjunction with the Commandant's tour of the Western Pacific, Okinawa and mainland Japan, and as he puts it, "...to try to be as close to Marines as possible, see what they're up to, and to reinforce all the proper things they're doing, and to look at anything they're doing that's not proper."

WHEN ASKED ABOUT drugs in the Marine Corps, the Commandant told Oahu reporters that, yes, there is a problem. He said, "There is no manufacture of drugs on any base. In this world we don't grow marijuana over in Kaneohe and we don't grow it in Camp Pendleton (California). It comes from somewhere else — it comes through and is sold by and in the domain of civilian authorities."

He said that in some geographical locations there is more abuse than in others and that in the areas where there is more, then the attitude tends to be "so what?" He also said that in areas where tough laws are strictly enforced, the abuse is less. "When you say that one third of

my Marines abuse drugs," said the General, "I know what you mean, but I would say that's an incorrect statement. That's an alleged result of a poll taken of a particular group of Marines deployed in the Mediterranean."

GEN BARROW FEELS that no percentage is acceptable to him, but if the same survey had been taken on Okinawa, the percentages would be much less.

"I can take you to Okinawa and Japan where we have approximately 23,000 Marines and the figure might be five percent. My instincts relate to the tight control the Japanese have imposed on hard drugs and, based on the country and penalty, one pays for dealing or use of it," said the Commandant.

Gen Barrow says that steps are being taken to alleviate the problem through surveillance, identification, treatment or prosecution, but that the military can't do it alone.

"...it has to be out of the civilian world. And if we have a problem, with all of the effort we apply to it, my God, what must it be like in other places? So, I think it's a national problem and a very serious one," said the General, "and the first order of business is to somehow persuade the young people as to the seriousness of it."

"THE DRUG SCENE IS A family problem," he continued. "It's a community problem, a law and order problem, a whole lot of problems and some parts of it are transferred into the service." He

told reporters that without the capability to deal with it, the problem is being maximized and employed to the fullest. "So we are not totally successful and we need to extend our corrective measures beyond what we employ in the service," he said. "And one thing we (the military) will be willing to do is do what I'm doing this morning — talk about it. Five percent would be enough to motivate me, but whatever it is, it's bad."

Another popular topic discussed during the conference was the Rapid Deployment Force. The Commandant told reporters that he doesn't feel intruded upon or in competition with the RDF.

"THE MARINE CORPS IS not leaning in any particular direction than what it has traditionally done," said Gen Barrow, "and that is work hard to be ready for a wide variety of contingencies. No service in the world — I'm picking my words carefully, I didn't say in the U.S. — no service in the world works in as many different environmental conditions and with as many different allies as does the United States Marine Corps."

The General said that the Marine Corps continues to maintain a kind of global perspective "...go anywhere and do whatever the requirement is. But if someone wants to hang a title on us or give us a more specific mission, like being particularly interested in the northern flank of Scandinavia, fine. We've been going up there

every winter for the last five years."

Gen Barrow says that some elements of the RDF contain some capabilities that the Corps does not have, but he believes that most problem areas of the world will be addressed primarily from the sea.

"IF A PARTICULAR problem is not of a large magnitude, it might be well within the capability of naval forces alone — Navy and Marine Corps — to deal with it," the Commandant said. "But if it gets to be of a certain size and complication, then there need to be other forces to add to it. And when we do that, we look to the Army, Navy and Air Force, and it becomes multiservice."

The Commandant says he has no quarrel with the RDF idea. "Without meaning to sound flip," he said, "I've been in three wars and I haven't seen a crowded battlefield yet. There's plenty of room out there for all services."

Although drug abuse in the military and the Rapid Deployment Force were the main thrust of questions asked by the Oahu press, the Commandant also addressed the issues of the pay raise bill (he favors across the board raises), the national budget, the quality of today's recruits and the need for the draft.

WHILE ON ISLAND, GEN Barrow visited the Commanding General, Fleet Marine Force, Pacific, Camp Smith, MCAS Kaneohe Bay and the 1st Marine Brigade.



Photo by Sgt Nora Parriah

PRESS CONFERENCE — The Commandant of the Marine Corps, General Robert H. Barrow, emphasizes a point during a press conference at Base Operations, Hickam Air Force Base. Gen Barrow addressed questions from Oahu reporters Thursday dealing with issues like drug problems, the rapid deployment force and the military pay raise.

Travel

New order reimburses expenses

HQMC, WASHINGTON — Marines who have made permanent change of station moves since 1978 that involved temporary duty may qualify for some extra travel money.

According to ALMAR 135/81, the Comptroller General of the United States has authorized service members to travel at government expense from their TDY station to their previous permanent duty station during PCS moves to help relocate dependents and/or personal effects. The authorization is retroactive to August 1978.

In the past, Marines would often attend schools at commands far from their present duty station without knowing where their next permanent duty station would be.

At that time, Marines had two choices. They could return to their old duty station, pick up their dependents or household goods and then go to their new duty station, or they could have their dependents travel by themselves.

If the Marine elected to return to his or her previous duty station and then travel to the new

destination via the temporary duty station, the cost of transportation was paid by the individual Marine.

Officials here said many Marines selected this option even though it meant a considerable financial sacrifice on their part. Now, Marines may be reimbursed for travel from their TDY station to their old command before heading to their next duty station.

In order for a Marine to qualify for reimbursement of travel expenses under the new system, he or she must have documented evidence that the trip was necessary to transport dependents or household goods.

According to officials here, an unmarried Marine's household goods would probably be held in storage while he or she was TDY. Storage receipts would qualify as a reason for having to make such a trip.

In the future, transportation costs to cover the expense of traveling from the TDY station to the new duty station via the old duty station will be included in travel claim vouchers.

Hawaii platoon receives Outstanding Unit Medal

HQMC, WASHINGTON — The Association of Old Crows has selected the Communications Platoon, 1st Battalion, 3d Marine, 1st Marine Brigade, as the Marine Corps outstanding electronic warfare unit for 1981.

THE HAWAII-based platoon will receive the Association's 1981 Outstanding Unit Medal during the Department of Defense's Electronic Warfare Symposium at Andrews Air Force Base, Md., Oct. 12 through 16.

During a September 1980 combat readiness evaluation of 1/3 in an Hawaiian training area, the communications platoon kept transmissions short, used directional antennas, sent messages randomly and placed natural terrain features between radio transmitters and enemy positions.

While deployed to the Western

Pacific and the Indian Ocean from October 1980 to April 1981, the platoon participated in operations in the Philippines, Africa, Australia and the Republic of Korea. During each operation, electronic warfare was used and the communications platoon helped direct fire missions against enemy jammers and identified enemy use of specific radio frequencies.

"THE HIGHLY professional and innovative electronic warfare techniques employed during exercise CREE Dragon and the sustained performance in subsequent exercises and operations in the Western Pacific and the Indian Ocean regions significantly improved the readiness of the entire Battalion Landing Team as well as the Fleet Marine Force, Pacific operational readiness posture," according to the award's citation.

Health center announces new clinic

HONOLULU — The Women's Health Center of Hawaii, Inc. announced the opening of its new clinic facility Sept. 17 at 1521 South King Street. The public is invited to tour the facilities and "get acquainted" with staff members.

THE WOMEN'S Health Center and Clinic is the first of its kind in the state's health-care history. The first independent medical clinic to be organized, operated and managed entirely by women for women... the first clinic in Hawaii to offer complete DES screening, counseling and educational services. Funding for the clinic is provided through a Title X grant administered by the State Office of Family Planning and donations from private foundations. Patient fees will be determined by total family income and dependents on a sliding fee scale.

The new facility will offer complete gynecological care, annual

physicals, counseling, pap smears, pregnancy testing, breast exams and menopause care and counseling. Family planning services, fertility awareness (natural birth-control), prenatal and postpartum services will be available to women and couples, and complete clinical screening for DES-exposed sons, daughters and mothers will be provided by trained practitioners. The clinic will be open from noon till 8 p.m. Mondays and Thursdays, and from 9 a.m. till noon Saturdays. Child-care will be available at no cost. Appointments can be made by calling 944-5589.

reach programs designed to bring high quality participatory health care to island women provided by island women. The WHC & C has also been active in developing and delivering enlightened health care training to medical professionals and para-professionals. These programs are being expanded to include DES screening (DES, or diethyl-

stilbestrol, the synthetic hormone that was given to millions of women during the 50s and 60s to prevent miscarriage, is now related to numerous medical problems for the offspring, including increased miscarriage, infertility, adenosis and sometimes a rare form of cancer.)

Volunteers are the backbone of the WHC & C operations. Staff

members are currently training lay persons to become "patient advocates," counselors and "patient instructors" for ongoing programs. "Patient advocacy" is unique to the WHC & C system. "Patient advocates" are (mostly) community members trained to accompany each client throughout the clinic visit, offering assistance and support to

the patient at all times. PHYSICIAN care will be provided by volunteers from the local community and the John Burns School of Medicine. Persons interested in volunteering for lay or professional positions with the clinic are urged to call as soon as possible. For more information call Astrid Jackson or Linda Martin at 944-5589.

Fewer entries reduce work

Record book format changes

HQMC, WASHINGTON — The Marine Corps is making efforts to reduce the administrative work load in field commands.

Officials here have combined reporting efforts and reduced the number of entries to be made in officer qualification records and enlisted service record books to prevent unnecessary duplication.

Valid requirements, where possible, will be combined, and a sample format provided, to keep the number of authorized and required entries to a minimum, according to Marine Corps Bulletin 1070 of Aug. 3.

The changes concern page 11 entries in Marine record books. The Individual Records Administration Manual, which controls the way record

books are managed, requires page 11 entries in record books to be limited to those essential to a Marine's military history.

Discontinued entries include blood type, initial swimmer classification, assignment of ready reserve physical risk code, temporary appointments, grade and date of rank (temporary and permanent promotions), weight control pro-

TALKING TO THE TREES — "I see you believe you can do this," General Robert H. Barrow tells Marines from Company L, 3d Battalion, 3d Marine, 1st Marine Brigade after a display of their anti-mechanized assault tactics. "You've got to believe it real hard." The Commandant went on to describe his own encounters with anti-tank tactics 31 years ago in Korea. The 3/3 demonstration was part of the General's visit to the Air Station and the Brigade. For story and photos turn to Pages A-8 and A-9.

Photo by SSgt Joe Blackburn



Project examines youth weight loss

by Kathryn Martin

The well-known breakfast cereal that has the nation "pinching an inch" is actually not far from being a realistic test for excess weight, according to David Weiss, Ph.D., staff psychologist for the Tripler Child-Adolescent Psychiatry Service.

Weiss is currently heading a project that will help overweight adolescents, ages 13 to 19, to lose weight and keep it off. The program will examine a variety of approaches to weight reduction that are designed to help participants lose excess fat and to maintain those losses.

PARTICIPANTS should be at least 15

percent overweight, not enrolled in any other weight loss program, not on any medications that might influence weight loss, not pregnant and not planning to leave Hawaii in the next year.

Weiss, a native New Yorker, is a graduate of the University of Hawaii where he earned his doctorate in psychology and a master's in public health science. His interest in obese children began when he did a study for his doctoral dissertation. He ran the project at Kapiolani Children's Medical Center before coming to Tripler.

"Eighty percent of obese adolescents become obese adults,"

explains Weiss. "It's not something you grow out of. We are not here to tell them (the kids) what to do, but rather, to help them. They will all be volunteers."

WEISS theorizes that the number one reason that people want to lose weight is for social acceptance. "There was a survey of school children who were asked who would they rather sit next to — a child that was handicapped or one that was overweight. Most said they would rather sit by the handicapped child."

Other reasons for losing weight, of course, stem from the risk of illness. Statistics show that the more overweight a person is, the higher the risk

factor for disease such as high blood pressure, diabetes and gout.

The program, which is an intense study of weight loss in children, will be a controlled study. The team includes, other than Weiss, a pediatrician, a dietitian, a behavioral science specialist, and a doctor who specializes in physical medicine.

"Each child will have to have a complete physical to ensure there is nothing medically wrong," stresses Weiss.

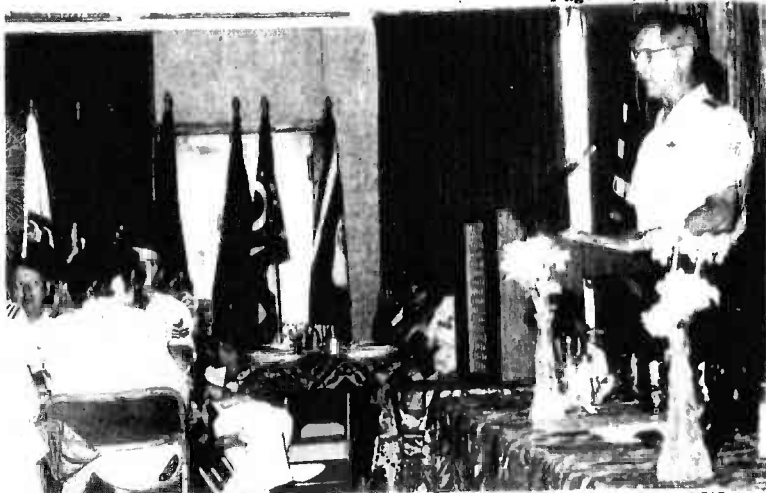
ACCORDING TO Weiss, no set diet will be used. "It's an exchange diet program where the dietitian will help set caloric levels where you can exchange certain foods with another... like

one cup of cereal will equal one slice of bread.

"The thing we are really trying to do is change some old habits. Jaw wiring, fasting and those fad diets don't teach you anything. They just let you starve for a while. The pattern of weight loss and gain is up and down and up and down. It's very trying on your system."

So how do you determine if a child is overweight? "We use an instrument that measures the amount of excess skin fold on the underarm. From this, we can determine the amount of body fat.

To sign a child in the program, just call the Child - Adolescent Psychiatry Service at 433-6312/6418.



USAF photo

KICKOFF LUNCHEON — Lieutenant General Arnold Braswell, Pacific Air Forces Commander in Chief, was the keynote speaker at the kickoff luncheon for the 1982 Combined Federal Campaign last week at Camp Smith. Lt. Gen. Braswell told key workers at the luncheon, "Making the 1982 campaign

goal of \$1.8 million presents us with a challenging task... one requiring command interest and enthusiastic support from everyone present today." This year's campaign theme is "We Care — We Share." CFC runs from Sept. 8 to Oct. 10.

Courts Martial Report

Lance Corporal Steven C. Berry, 1st Radio Battalion, Fleet Marine Force, was convicted at trial by special court-martial of the wrongful possession and use of marijuana.

He was sentenced to 45 days hard labor without confinement, forfeiture of \$150 pay per month for four months and reduction to private.

LCpl Robert A. Pancee, Headquarters and Headquarters Squadron, MCAS Kaneohe Bay, was convicted at trial by special court-martial of the wrongful sale, transfer and possession of marijuana.

He was sentenced to 30 days confinement at hard labor, forfeiture of \$300 pay per month for three months and reduction to private.

Private First Class Charles H. Carlisle, Headquarters Company, 3d Marines, 1st Marine Brigade, was convicted at trial by special court-martial of disrespect to superior commissioned officers on three occasions; of disobeying the lawful command of a superior commissioned officer; of failing to have an Armed Forces identification card in his

possession; and of twice appearing in an improper uniform.

He was sentenced to three months confinement at hard labor and reduction to private.

PFC Kurt K. Hartman, 1st Battalion, 3d Marines, 1st Marine Brigade, was convicted at trial by special court-martial of unauthorized absence from May 16 to June 22, 1981; unauthorized absence with intent to avoid field exercises; missing movement through plan; and of wrongful possession of marijuana.

He was sentenced to

six months confinement at hard labor, forfeiture of \$334 pay per month for six months, reduction to private and a bad-conduct discharge.

Sergeant Harvey

F. Copeland, Brigade Service Support Group, 1st Marine Brigade, was convicted at trial by special court-martial of stealing a cassette from the U.S. mail so as to prevent its delivery, and of making a false statement under oath.

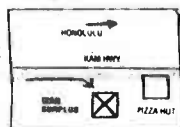
He was sentenced to three months confinement at hard labor, forfeiture of \$400 pay per month for three months and reduction to lance corporal.

War Surplus



Genuine Government ISSUE SURPLUS

- ★ ARMY
- ★ NAVY
- ★ AIR FORCE
- ★ MARINES
- ★ ALL MILITARY SERVICES
- ★ CAMPING GOODS



97-719 Kam Highway
Pearl City
Phone: 456-5075

OPEN
7 DAYS
9-6 P.M.

RAMS

VS

CLEVELAND BROWNS

OCT. 4 — 9:35 A.M.

PLAY BY PLAY WITH
BOB STARR/DICK BASS
WITH **STEVE BAILEY**

KDEO

COUNTRY RADIO

WITH COUPON

INFLATION-FIGHTER COUPON

WITH COUPON

ANNIVERSARY
CLOCK REPAIR

10% OFF

A CLOCK HOUSE
Pearlridge Shopping Center
Phase I - 487-8825

CHAMPAGNE BRUNCH

11:00-2:00
SUNDAYS

7.95
ADULT

3.95
CHILD

HOLDEN'S DRINK

HONOLULU AIRPORT, 3481 HIKETA HWY, 826-0881 EXT. 734

OUR FIFTH LOCATION... OPENING SOON

SPA

Health & Fitness Centers

12 DAYS ONLY

295.00

Reg. 720.00

V.I.P. LIFETIME MEMBERSHIP

Expires October 6

COMPLETE FACILITIES

- HYDRO WHIRLPOOL
- SAUNA BATH
- PRIVATE SHOWERS
- PRIVATE LOCKERS
- PRIVATE DRESSING RM
- VANITY AREA
- \$80,000 IN FABULOUS EXERCISE EQUIPMENT
- JOGGING MACHINE
- NUTRITIONAL GUIDANCE
- SUPERVISED PROGRAMS
- WORLDWIDE FACILITIES
- STEAM ROOM
- DYNA CAM
- SUPERVISED PROGRAMS
- YOGA AND SPORTS CONDITIONING
- WATER EXERCISE CLASSES

PUNAHOU
1712 PUNAHOU ST
IN THE BAYVIEW TREE PLAZA
949-0026

PEARLRIDGE
PEARLRIDGE SHOPPING CTR
WEST TO LONGS
487-5551

AINA HAINA
850 W. HIND DR
AINA HAINA PROF. BLDG.
373-9836

KANEOHE
44-161 KANEOHE ST
ACROSS KANEOHE DATSUM
235-6461

5th LOCATION COMING SOON!

The Hawaii Marine is an unofficial newspaper published every Wednesday by RFD Publications, Inc., 46-016 Alaloe St., Kaneohe, Hawaii 96744, in the interest of U.S. Marine Corps personnel in Hawaii. All news copy is prepared in the Joint Public Affairs Office, Marine Corps Air Station, Kaneohe Bay, Hawaii 96863, 257-2179.

Copy must be submitted no later than noon Thursday for the following Wednesday publication. Hawaii Marine solicits contributions of information and photographs from all Marine Corps organizations. However, it reserves the right to edit or rewrite material submitted. All advertising is arranged by the publisher, RFD Publications, Inc., telephone 235-5881. Circulation is 8,000.

Everything advertised in this publication must be made available for purchase, use or patronage without regard to race, creed, color, national origin, age or sex of the purchaser, user or patron. A confirmed violation or rejection of this policy of equal opportunities by an advertiser will result in the refusal to print advertising from that source.

HAWAII MARINE

At a glance

Movie prices

Movie prices at the Family Theater will change Oct. 1. But, it isn't all bad news. While the price of adult admissions will increase from 85 cents to \$1.25, children's prices for ages 6 through 11 will decrease from 85 cents to 50 cents. There will be no charge for children under 6 years old.

According to Major

Malcolm Massie, Special Services Officer, the Naval Motion Picture Service directed the price change. The change reflects the increase in copyright prices to obtain movies.

Cash Sales

Cash Sales will remain open until the close of business Sept. 30.

Although an inventory and an early closing of Cash Sales was scheduled for Sept. 18, Headquarters Marine Corps has directed the outlet to remain open through the end of the month. Cash Sales will be open from 8 a.m. till 3 p.m. Monday through Friday until Sept. 30.

This is to allow Marines to purchase

uniform items before the scheduled price increase and the move to the Marine Corps Exchange Oct. 1.

According to Sergeant Mike Wilson, Store Manager for Cash Sales, if a unit has a large number of Marines needing to buy uniforms, arrangements can be made to schedule them

as a group after normal working hours. Unit supervisors should call Sgt Wilson or Gunnery Sergeant R. Severance at 257-2270 for more information.

Reenlistment payments

Marines currently receiving Selective Reenlistment Bonus Payments can now receive their remaining SRBP in a lump sum payment if they act before Monday.

As announced in ALMAR 158/81, this is strictly voluntary and Marines who do not choose this option will continue to receive the payments in annual installments.

Marines who choose to take advantage of the lump sum payment should be aware that federal and state income tax will be withheld.

For detailed information, contact the Disbursing Office or see ALMAR 158/81.

Clinic renovations

The Navy Regional Medical Clinic at Pearl Harbor (Building 1407) is undergoing minor renovation now through Oct. 30.

The renovation will include new floor coverings, causing some departments to be temporarily relocated.

The clinic will continue to provide the best care possible with the least interruptions. If problems arise which need to be brought to the clinic's attention, please direct them to the administrative office at 474-2239.

Postal hours

The Unit 3 Post Office in Building 835, also known as the Brigade Post office, will extend service hours for the Christmas holiday.

In addition to normal weekday hours of operation, the post office will be open from

8:30 a.m. to 12:30 p.m. on the following Saturdays to include finance sales (except money orders) and delivery of personal accountable mail: Nov. 14, 21, 28 and Dec. 5, 12, and 19.

The Unit 1 Post Office (Exchange) will not be open Saturdays.

Childhood education course

Chaminade University will offer its introductory Montessori Early Childhood Education course in the evening for the first time as part of its Fall Accelerated Program beginning Oct. 13.

Slated in response to requests from teachers and other individuals interested in early childhood education, the course, Introduction to Montessori, will be offered at the Waialae campus from 4:30 till 7:45 p.m. each Tuesday and Thursday evening through Dec. 15.

Further information on Chaminade's Montessori program and the upcoming classes are available from Sister Christina Trudeau, program coordinator, by calling Chaminade, 735-4715. Sr. Christina and Louise Bogart will team-teach the upcoming evening class.

Examination seminar

The University of Hawaii at Manoa, College of Continuing Education and Community Service will sponsor a seminar for people preparing for general intelligence examinations Oct. 17 from 9 a.m. to 4 p.m. at the UHM Institute of Geophysics Auditorium.

Warren Fischer, author of the book "Intensive Preparation for Civil Service Examinations," will conduct the course.

For more information call 948-6424.

Shipping

Opportune shipping will be available for the movement of authorized material to Okinawa during November and to California during December.

Such shipping may be used by authorized personnel for shipment for privately owned items such as automobiles and boats, as defined by Brigade Order 4620.1A.

Additional information may be obtained by contacting 1st Lt. Paul Ladner at 257-2240 or 257-2641.

Student loan

Hawaiian Auxiliary, Navy Relief Society has applications on hand for guaranteed student loan for spouses for the 1982 Spring Semester. Completed applications must be returned to the Navy Relief Office by Oct. 15. Applications can be picked up at Building 1514, Pearl Harbor Navy Relief Office.



Photo by Ssgt Joe Blackburn

CONGRATULATIONS — Chief Warrant Officer-3 Jim Poon, Officer-in-Charge of Pless Hall, accepts the Dining Facility of the Quarter plaque from Brigadier General Bain McClintock, Commanding

General 1st Marine Brigade, in a recent ceremony held at Pless Hall. The dining facility won the award twice this year, the first and third quarters.

EXTENDED BY POPULAR DEMAND
LAST CHANCE
CAR TINTING
—ANY CAR—
FOR ONLY \$98.95

- All legal colors available
- Reservations must be made this week for discount price
- Reg. \$135-\$175
- Please mention this Ad when making your reservation to assure your Special Price

LEGAL AUTO TINT
Offer expires Sept. 30 45-1021 Kam Hwy., Kaneohe

CALL TODAY 247-8595

Save \$5.00 on a 25 lb. box of MEADOW FRESH NEW MILK ALTERNATE

- Delicious • Nutritious
- Super low cost • Lowfat

For information & ordering call:

Willard 689-0355 Carol 668-2195
Gladys 623-0595 Bro. Lloyd 947-9485
Harry 671-2073 Lila 487-5069

Join Now! Unlimited \$\$\$ Potential For Distributors
Coupon Expires Oct. 15, 1981

FAMILY CHIROPRACTIC CENTER

Dr. Lawrence J. Connors, M.A., D.C.
CHIROPRACTIC... THE NATURAL SOLUTION TO HEALTH PROBLEMS

- Headache
- Nervousness
- Neck Pain
- Shoulder-Arm Pain
- Burnitis
- Arthritis
- Backache
- "Pinched Nerves"
- Numbness in Hands or Feet

X-RAY FACILITIES
WORKER'S COMPENSATION
INSURANCE
HEALTH LECTURES
1ST & 3RD SAT. 9:30 A.M.

No Charge For Consultation

KANEOHE BUSINESS & PROFESSIONAL CENTER
48-005 Kawa St., Suite 201
235-6677

SCHEDULED AIRLINES TICKET OFFICE (SATO)

Staffed by full time Airline personnel
To assist in your travel requirements

- Individual leave
- Family travel to the Mainland
- Neighbor Island
- International
- Dependent travel to West-PAC
- Fares
- Flight Information

Contact SATO for reservations and airline tickets at any one of our three convenient on base locations.

Pearl Harbor Bldg. 487 - Tele: 422-0571
Office hours - Mon. thru Fri. 0730-1600

Camp Smith - Bldg. 2D - Tele. 487-1567
Office hours - Mon. thru Fri. 0800-1600

Kaneohe MCAS - Bldg. 209 - Tele: 254-1564
Office hours - Mon. thru Fri. 0730-1530

IT'S EVOLUTIONARY... CONTINUOUS WEAR SOFT CONTACT LENSES

- Can be worn continuously, day and night, for up to two weeks without removal.
- Superior oxygen transmission of this lens allows continuous wear—even while sleeping.
- Completely safe, comfortable and easy to wear from the start.
- 90-Day Trial Period.

COMPLETE PROFESSIONAL VISION SERVICES **SPECIALIZING IN CONTACT LENSES**

\$105 includes standard soft contact lenses, care kit, follow up care by Dr. Dean and 90 DAY TRIAL PERIOD (NOT EXTENDED WEAR)

Dr. Charles Dean Optometrist

KAILUA
139 Hekili St.
261-9735

THE NEW ITALIAN GALLEY

AT PIRATE BULLY HAYES PLACE

The Best in Italian Cuisine
Mon. thru Sat.: 11:00 a.m. to 10:00 p.m.
Sun.: 5:00 p.m. to 10:00 p.m.

★ Happy Hour 3:00 p.m. to 6:00 p.m. Mon.-Fri. ★
★ Pupus served DAILY to 1:00 a.m. ★
★ Rock'n'Roll Nightly 9:30 to 1:30 a.m. ★

98-723 Kuahao Place (Newtown)
PHONE: 488-5464

PRESTIGE GOLD & SILVER EXCHANGE

ANNOUNCES THE OPENING OF IT'S NEW LOCATION
46-246 Kahuhipa St.
Kaneohe
247-8477
Open Monday thru Friday 9-5
Saturday 9-12

WE BUY

- Gold
- Silver
- Platinum
- Watches
- Dental Gold
- Diamonds
- Pocket Watches
- U.S. & Foreign Coins

— IN ANY FORM —

ALSO LOCATED IN HONOLULU AT
746 Kapahulu Ave, 735-2368

PRE-FLIGHT — An F-4 Phantom aircraft from the Marine Fighter Attack Squadron-235, is a beehive of activity in preparation for flight. VMFA-235 has been named by the Marine Corps Aviation Association as the Fighter Attack Squadron of the Year and will be presented with the Robert M. Hanson Award during ceremonies in Detroit Oct. 8 through 11, 1981.

Photo by Sgt Inez J. Stoner



Death Angels snare top honors

by Sgt Inez J. Stoner

It takes more than fuel and aerodynamic forces to get an airplane off the ground. It takes cooperation, dedication, knowledge and a lot of hard work.

THE MARINES of Marine Fighter Attack Squadron-235 have plenty of what it takes. The Death Angels, as they are known, are this year's recipients of the Marine Corps Aviation Association's Robert M. Hanson Award for the best fighter attack squadron in the Marine Corps.

It is the mission of the approximately 250 officers and enlisted Marines of VMFA-235 to provide air-to-air and air-to-ground support for the ground troops. This is accomplished with 12 F-4 Phantom jet aircraft.

THE SQUADRON was commissioned on New Year's Day 1943. They served four tours in the Pacific during World War II before being assigned to the Marine Air Reserve Training Command.

When the fighting broke out in Korea, the squadron was recalled to active duty, equipped with the famous Corsair aircraft and shipped to the Marine Corps Air Station at El Toro, Calif.

Until the end of the 1950s the Death Angels bounced between El Toro, the Marine Corps Air Station, Kaneohe Bay, Hawaii and the Naval Air Station, Atsugi, Japan.

On Feb. 1, 1966 the Death Angels arrived at DaNang, Vietnam and within 24 hours flew its first combat sortie. During the conflict in Vietnam the pilots of VMFA-235 flew more than 12,000

combat sorties and earned over 500 Air Medals.

THE DEATH ANGELS have made their home at MCAS Kaneohe Bay, Hawaii since 1968. In September 1977 they became the first fixed wing squadron in the Marine Corps to participate in the six-month unit deployment program. Since that time the squadron has been on three deployments to the Western Pacific.

The squadron's achievements over the past year led to their selection as the best fighter attack squadron in the Marine Corps this year.

On Sept. 25, 1980 the Death Angels left the Air Station for their third WESTPAC tour. Almost immediately after their arrival in WESTPAC, VMFA-235 began participating in a number of joint service exercises. These exercises involved air-to-air and air-to-ground scenarios with fixed wing and rotary aircraft from the Air Force and the Navy in addition to the Marine Corps. The exercises are said to provide some of the most realistic combat training available today.

WHILE IN WESTPAC the squadron also flew to the Naval Air Station, Cebu Point in the Republic of the Philippines for five weeks of intensive training. In November 1980 VMFA-235 flew continuous close air support for Marines from the United States and the Republic of the Philippines during an exercise called Yaliant Blitz.

The Death Angels returned to the Air Station on April 1, 1981, completing their third successful WESTPAC tour. Upon their return

they immediately resumed training with other components of the 1st Marine Brigade's air-ground team.

THE SQUADRON'S outstanding performance of duty while on deployment was highlighted by a visit from then Commanding General of the 1st Marine Brigade. Brigadier General W.H. Rice presented the Death Angels with the Sea Service Deployment Ribbon and the Fleet Marine Force, Pacific Annual Aviation Safety Award.

The exceptional performance of the individual Marines within the squadron is noted by the lengthy list of personal awards and achievements earned last year. Among those listed are 54 awards of the Good Conduct Medal, two Navy Achievement Medals, 10 meritorious promotions and 86 Meritorious Masters.

On Nov. 18, 1980 VMFA-235 officially logged 10,000 accident free hours. Currently the Death Angels have logged nearly 13,000 accident free hours.

These accomplishments, along with the squadron's historic commitment to excellence clinched the award.

"It took a real team effort and a lot of hard work to earn this

award," explained Major Harry Sprague, Executive Officer for VMFA-235. "The dedication and team work in this squadron is superior."

THE HANSON AWARD is based on day-to-day performance and is designed to recognize and reward meritorious and professional achievements within a Marine fighter attack squadron.

"You don't start out at the beginning of the year working for the Hanson Award," said Maj Sprague. "We strive for combat readiness and the Hanson Award is the recognition for achieving this high state of readiness."

This is the first time the Death Angels have been called the best fighter attack squadron in the Marine Corps, but according to Lieutenant Colonel Duane Wills, commanding officer since July 1981, "Our goal now is to be a repeat winner. It doesn't happen very often, but we think it can be done."

EDITOR'S NOTE — Gunnery Sergeant James Stephens Jr., of VMFA-235, has been selected as the Electronics Technician of the Year by the Marine Corps Aviation Association. See the Sept. 30 issue of the *Hawaii Marine* for story and photos.



Photo by Sgt Inez J. Stoner

DEATH ANGELS — This sign marks the territory of the best fighter attack squadron in the Marine Corps. VMFA-235 is this year's recipient of the Robert M. Hanson Award, given by the Marine Corps Aviation Association.

Hawaii Plastic Surgical Assoc., Inc.
MICHAEL D. WEINER, M.D.

Diplomate American Board of Plastic and Reconstructive Surgery

**Is Happy To Announce
The Opening Of Our New
Kaneohe Branch Office**

Specializing in Plastic, Reconstructive
And Hand Surgery

at
**46-005 Kawa St., #307, Kaneohe, Hawaii
(Territorial Building)**

Evening and Saturday Office
Hours By Appointment. Call **262-6961**



"A Few Facts About Hair & Nails"

Hair grows in three stages. The growing state (anagen) lasts from two to six years. The resting phase (telogen) lasts for six months. A new hair forming in the follicle pushes the old hair out and begins its own life cycle.

Hair grows six inches a year. A strand of hair 12, 24 or 36 inches long indicates a life of 2, 4 or 6 years. It is the hair farthest from the scalp that needs the best care.

The cortex and medulla of the hair contain its natural color pigment called melanosomes.

Hair may hold from 5 to 33% of its weight in water depending on the relative humidity to which it is exposed. The higher the humidity the more water the hair can hold.

The behavior of the hair fiber is determined by the amounts of protein and water it contains. When the hair lacks moisture it is brittle. When it has too much moisture it is limp.

Shaving off excess hair does not promote more rapid growth.

Hair cannot turn grey overnight.

Heredity is the greatest factor causing male pattern baldness.

The nails grow approximately .119 millimeters per day.

Lack of protein and vitamins A, B, C and D in the diet cause nails to grow slower.

Children's nails grow faster than adults.

Nails grow 70% faster on fingers than on toes.

Hair and nails grow faster in the summer than in the winter.

The little finger and thumb nails grow more slowly than other nails.

The first six months of pregnancy increase fingernail and hair growth rapidly.

For more information
feel free to call us.

Susan Beers'
Salon

All hair services
specializing in:
haircutting, perms,
coloring, styling,
facials & manicures.

116-C Mahuli St.
Kalaheo
CALL TODAY
262-4221



PACIFIC SURPLUS & DISTRIBUTORS

Hawaii's only GAC store. GUARANTEES THE LOWEST PRICES IN HAWAII, due to their mainland buying power with 16 nationwide appliance stores.

CALL
262-8131

FOR 5 DAYS ONLY
HURRY OUR 2-WAY SPECIALTY SALE ENDS Sun. 9/27/81 5 pm

CEILING FAN

NOW OPEN
SUNDAYS 11-5



OUR GUARANTEE
If you find your fan advertised
at a lower price within 30 days
of purchase we'll refund the
difference in cash.

\$199 Sug. Retail \$299 Features: • 16" Wood Blades • 3 Speeds • Solid Wood Blades • Motor Selection • 3 Year Warranty	\$58 Sug. Retail \$129 Features: • 16" Wood Blades • 3 Year Warranty • Motor Selection • 3 Year Warranty	\$218 Sug. Retail \$399 Features: • Variable Speeds • 3 Year Warranty • 3 Year Warranty • Motor Selection • 3 Year Warranty
--	---	---

WE ARE ALSO... BERNINA

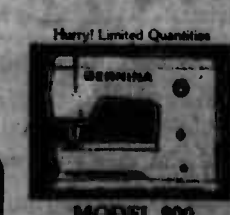
50% OFF

For the wife or mom during Football season... There isn't a better time to buy than Now!

BERNINA

- Monograms
- Self-Adjusting Tension
- Open Arm

Sug. Retail
\$650



- 25 yr. Exclusive Warranty
- Demo Model
- Zig Zag

NOW ONLY
\$325

PACIFIC SURPLUS & DISTRIBUTORS

CALL NOW 262-8131 1247-F Pali Hwy.
OPEN Mon. - Sat. 10-6:30 Sun. 11-5:30

MAINLINER and TRAVEL HOLIDAY Award Winners

L'Auberge
French Cuisine
Superb Dining In A Charming Country French Manner
RESERVATIONS AFTER 2 P.M.
262-4835
Open Wed. thru Sun. 6 p.m. to 10 p.m.
117 HEKILI STREET, KAILUA
Your Hosts: Marcel & Eki Baltzer

OKTOBERFEST!
Hale Koa's Banyan Tree Room transforms into a Bavarian tavern during 1981's exciting OKTOBERFEST, October 1, 2 and 3-7 pm on Thursday and 7:30 pm to 1 am Friday and Saturday. Pilsner beer, brats, liquis and hearty old-country food will be the center attraction.
Plus, the TYROLLEANS - a five-piece German orchestra - will be playing for the Oktoberfest! All this for just \$2.99 admission. Food and drink will be sold separately. Buy your tickets and admission tickets at Hale Koa's Activity Desk, or any of the participating offices. Don't miss this Hale Koa tradition!
OCTOBER 1, 2 & 3
Hale Koa's Banyan Tree Room transforms into a Bavarian tavern during 1981's exciting OKTOBERFEST, October 1, 2 and 3-7 pm on Thursday and 7:30 pm to 1 am Friday and Saturday. Pilsner beer, brats, liquis and hearty old-country food will be the center attraction.
Plus, the TYROLLEANS - a five-piece German orchestra - will be playing for the Oktoberfest! All this for just \$2.99 admission. Food and drink will be sold separately. Buy your tickets and admission tickets at Hale Koa's Activity Desk, or any of the participating offices. Don't miss this Hale Koa tradition!

Cinema

MCAS Theater 1 2 3 4 5 6 7
Camp Smith Theater 3 7 8 9 10 11 12

1. **THE BUSHIDO BLADE** — Richard Boone, Frank Converse, R. adventure drama. A great sword known as the "Bushido Blade" is stolen. It was intended for a gift to the U.S. President from Japan before a treaty between the two countries is signed. A daring quest ensues to locate the sword.
2. **DRACULA** — Frank Langella, Laurence Olivier, R. drama. Count Dracula, Langella, is handsome and charming. He is endowed with a strong sexual appetite and is plainly out for more than just blood from the ladies. The two primary females welcome his advances with open arms.
3. **FORT APACHE, THE BRONX** — Paul Newman, Ed Asner, R. action drama. Newman and Ken Wahl are police buddies assigned to a patrol-car in the crime-ridden area of the Bronx. Two rookie cops are killed and a tremendous effort is made by all to find the killer.
4. **DIRTY HARRY** — Clint Eastwood. Information not available.
5. **BOG** — Gloria De Haven, Aldo Ray, PG. horror drama. Deep in the dark and forboding north woods, a murky lake dotted with bogs has long hidden a horrible secret beneath its clouded waters.
6. **FATSO** — Dom DeLuise, Ann Bancroft, PG.

comedy drama. An obese middle-aged bachelor copes with a nagging sister, then meets the "girl of his dreams" and pursues her.

7. **THE PILOT** — Cliff Robertson, Diane Baker, PG. drama. A frustrated pilot, Robertson, consoles himself through alcohol. He endangers the lives of his passengers during a routine landing.

8. **CHEAPER TO KEEPER** — Mac Davis, Tovah Feldshuh, R. comedy. Recently divorced, Davis has to find a new job and living quarters. He takes a job working with feminist attorney Feldshuh. His job is to investigate husbands and relate their activities.

9. **BEING THERE** — Peter Sellers, Shirley Maclaine, PG. comedy. A bizarre tale of a

completely illiterate gardener who is taken in by a family when his employer dies.

10. **THE FOG** — Adrienne Barbeau, Janet Leigh, R. horror suspense. A leper crew is about to rise from their watery graves to seek vengeance on a group of townspeople.

11. **I GO POGO** — Jonathan Winters, Vincent Price, PG. comedy. A humorous political and social satire depicting the cartoon characters from the George Swamp of Okefenokee.

12. **TAKE THIS JOB AND SHOVE IT** — Robert Hays, Barbara Hershey, PG. comedy. Hays is returning to his hometown to supervise the brewery his company recently purchased. He makes changes that increase productivity but angers the workers. Through a series of events, he realizes the importance of friendship.

Association offers classes

The Hawaii Association for Children and Adults With Learning Disabilities will sponsor a two-day Assertiveness Training Workshop for learning disabled high school students and their parents. The workshop is one of a series of

three workshops planned to celebrate National Learning Disabilities month.

The sessions will be held on two consecutive Saturdays, Sept. 26 and Oct. 3, 9 a.m. to noon at Maryknoll Grade School, located at 1722 Dole Street.

The cost is \$10 per person and registration can be made by calling HACLAD at 536-9684 by today.

At the workshops, participants will have the opportunity to explore their own assertive philosophy, identify personal

rights, deal with intimidating factors confronting their learning disability and to develop assertive body language and responsible communication styles which may enable them to resolve personal and school problems.

we care...
we share.



Kaneohe Travel Agency, Inc.
Phone 247-2113

OAHU GOLF TOURNAMENT ON KAUAI

24-25 OCTOBER 1981

\$1500*

INCLUDES

- ROUND TRIP AIR FARE
- ONE NIGHT AT KAUAI RESORT
- COMPACT CAR
- 18 HOLES AT WAILUA GOLF COURSE
- 18 HOLES AT KAUAI GOLF COURSE
- GREEN FEES
- GOLF CART
- SATURDAY NIGHT DINNER

*DOUBLE OCCUPANCY

Mon. thru Sat. 9-5 p.m.
Windward City Shopping Center

ATC & IATA Approved
License #XTRAG0053

Sears

KANEOHE

MONTH END SALE

Most Items At Reduced Prices

Thursday, Friday and Saturday

Prices In This Ad Effective Thursday
Thru Saturday, September 24 Thru 26

Use your SearsCharge account

Store Hours

Monday, Tuesday, Thursday
9:30 A.M. to 6:30 P.M.
Wednesday, Friday — 9:30 A.M. to 8 P.M.
Saturday — 9 A.M. to 5 P.M.
Sunday — 10 A.M. to 3 P.M.

**WINDWARD CITY SHOPPING
CENTER**

PHONE 235-3677

You can
count on

Sears

SEARS, ROEBUCK AND CO.

Satisfaction Guaranteed or Your Money Back

SLASHED 30%



1086-998

Sears Circular Saw CLOSEOUT

7 1/4-in. Circular Saw

Develops maximum 2 HP.
Ball and roller bearings.
With 7 1/4-in. combination
blade.

(6 Only)

Was \$79.99

4988

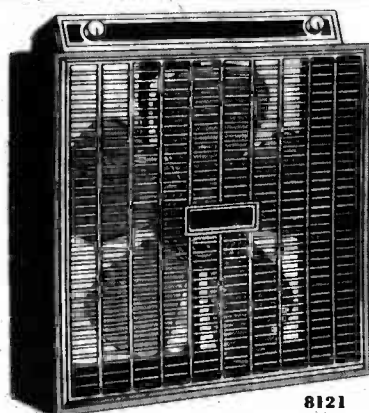
7-in. Circular Saw

Develops maximum 1-2/3
HP. 5200 rpm no-load
speed. Ball and sleeve
bearings. Model 1082-998.

(4 Only)

Was \$59.99

3988



8121

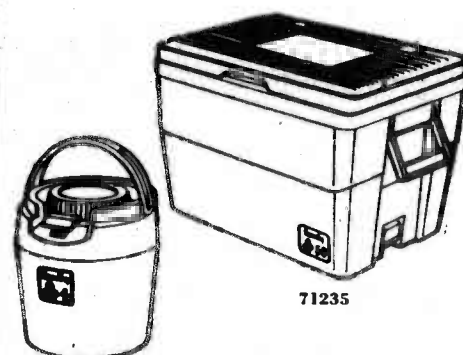
SAVE \$8

3-speed Electric Fan

High, medium and low speeds.
Sears 20-in. fan with thermostat to
set comfort level. Carrying handle.
(10 Only)

Regular \$37.99

2999



71235

SAVE \$8

50-qt. Chest Combination

Help keep foods and beverages
cold. Polyethylene case with
urethane foam insulation.
Includes 4-quart jug.

Regular Separate
Prices Total \$42.98

3488

SLASHED \$10 and \$20



b. 2383



e. 21686



a. 2377

a. AM/FM Clock-radio

With electronic LED
readout. Wakes you to
radio. Repeat alarm.
One-hour sleep switch.

(6 Only)

Was \$39.95

2995

b. Electronic Clock-radio

Wakes you to radio or
beep-tone. Pushbutton
controls for repeat
alarm, alarm off, LED
readout.

(6 Only)

Was \$49.95

3995

c. Portable Recorder-player

Automatic end-of-tape
shutoff. Pushbutton
controls for play,
record, stop, rewind,
fast-forward.

(6 Only)

Was \$69.95

4995



ASSEMBLY LINE — Composite Marine Medium Helicopter Squadron-262 wives package cookies to be sent to their husbands who are afloat with the 31st Marine Amphibious Unit. The wives and their children got together at the 19th Puka, Sept. 5.

Unit Info

Flying Tigers

The wives and children of Composite Marine Medium Helicopter Squadron-262 held a "Cookie-packing Get-together" Sept. 5 at the 19th Puka.

The families baked and packaged 300 dozen cookies (mostly chocolate chip) to send to their Marines who are deployed with the 31st Marine Amphibious Unit.

In addition to the cookies, the Marines will receive a video tape composed by their families. The tape contains footage of the children drawing and individual family hellos.

The wives expect the package to reach HMM(C)-262 at the half-way point of the deployment. Submitted by Mrs. Teddie Williams and Debbie Lund, the Ombudsmen of Composite Marine Medium Helicopter Squadron-262.

1st Rad Bn

Staff Sergeant Peter Kozma, 1st Radio Battalion, reenlisted on the USS Arizona Memorial Sept. 10.

Colonel M.F. Keane, 1st Radio Battalion Commanding Officer, administered the reenlistment oath to SSgt Kozma before 30 members of the battalion.

The national ensign was raised and lowered by SSgt Kozma with the assistance of two fellow staff noncommissioned officers, while the 1st Radio Battalion members rendered honors. The flag was then awarded to SSgt Kozma, along with a presentation certificate from Commander Naval Base Pearl Harbor.

Submitted by Gunnery Sergeant Craig Fairbanks, Career Planner, 1st Rad Bn.

NRMC, Kaneohe Bay

Hospitalman First Class and Mrs. Jose Manzano of MCAS Kaneohe Bay recently visited their son Midshipman Fourth Class Jay T. Manzano, during Parents' Open House Weekend at the U.S. Naval Academy in Annapolis, MD. Midshipman Manzano, who graduated in 1980 from Kalaheo High School, is one of

the 1,327 members of the Academy Class of 1985, which reported to Annapolis in July.

The new midshipmen were selected from among 11,897 applicants.

With 81 percent of the new midshipmen from the top fifth of their high school classes, they bring to Annapolis one of the highest Scholastic Aptitude Test scores in recent years, with an average verbal SAT of 575 and a math average of 659.

More than 55 percent of the class were members of the National Honor Society in high school and 81 percent were varsity athletes. Most were active in extracurricular activities.

Upon graduation, midshipmen receive bachelor degrees of science and are commissioned as officers in the Navy or Marine Corps. Submitted by Navy Lieutenant Bill Aikens, Emergency Room Supervisor at the Kaneohe Branch, Naval Regional Medical Clinic.

"Great Guns"

ARMS - SWORDS - MILITARIA

You Shouldn't Miss This Gun Show

NEAL BLAISDELL CENTER
SATURDAY, SEPT. 26TH • SUNDAY, SEPT. 27TH
10 A.M.-6 P.M. 10 A.M.-5 P.M.

ADMISSION \$1.50

We Buy • Sell • Trade
You Can Too!

Bring your treasures... we will help identify.

For Information Call 524-0763 • 735-1198

SPONSOR: THE HAWAII HISTORIC ARMS ASSOCIATION

P.O. Box 1733, Honolulu, HI 96806

DON'T FORGET...!

Fall 1981

Accelerated Session

REGISTRATION

with

CHAMINADE UNIVERSITY

is

Now in progress.

Classes begin Oct. 5.

CHAMINADE OFFERS YOU

9 convenient locations, a wide variety of courses and the following degree programs:

Bachelor of Fine Arts
Bachelor of Business Administration
Fifth Year Certificate
Master of Business Administration
Master of Arts in Religious Education
Master of Education Certificate

Associate in Arts
Associate in Science
Associate in General Studies
Bachelor of General Studies
Bachelor of Arts
Bachelor of Science

Counselors are available to assist you by calling:

At Schofield - 624-2515

At Waikane Campus - 735-473

Localmotion

K-BAY OFFICERS' CLUB

TODAY — Lunch in the Pacific Room from 11 a.m. till 1 p.m. features special, hot carved sandwiches, soup and salads. Mongolian barbecue on the Lower Lanai from 6 till 8:30 p.m.

THURSDAY — Lunch in the Pacific Room from 11 a.m. till 1 p.m. Beefsteak Nite from 6 till 8:30 p.m. featuring steamship round, a seafood item, rice or potatoes, vegetable and a salad bar.

FRIDAY — Lunch in the Pacific Room from 11 a.m. till 1 p.m. Happy Hour in the Tapa Bar from 4:30 till 6:30 p.m. Mongolian barbecue on the Lower Lanai from 6 till 9 p.m. "Nite Rider" plays in the Tapa Bar from 8:30 p.m. till 12:30 a.m.

SATURDAY — King crab and hotel round of beef served with salad bar, rice, potatoes, vegetable, rolls, coffee and iced tea.

SUNDAY — Champagne brunch in the Pacific Room from 10 a.m. till 1 p.m. with a variety of breakfast specials and a complimentary glass of champagne. In the evening, Prime Rib Buffet with all the trimmings.

MONDAY — Lunch in the Pacific Room from 11 a.m. till 1 p.m. Join us Monday through Friday for lunch specials, hot carved sandwiches, soup and salads. Monday evening the dining room is closed. During football season, the Tapa Bar will open from 4:30 till 8 p.m. Halftime prices will mean one-half off all drinks.

TUESDAY — Lunch in the Pacific Room from 11 a.m. till 1 p.m. Tuesday evening the dining room is closed. The Tapa Bar opens from 4 till 10 p.m. Happy Hour from 4:30 till 6:30 p.m.

K-BAY SNCO CLUB

TODAY — Luncheon special is chicken a la king. Family Night Buffet is served from 5:30 till 8:30 p.m.

THURSDAY — Luncheon special is beef

ribs. Mongolian barbecue is served from 5:30 till 8:30 p.m.

FRIDAY — Luncheon special is fish and chips. Aloha Happy Hour is from 4 till 6 p.m. Candlelight dining and peel and eat shrimp are served from 6 till 9 p.m. "The Electric Rangers" play from 9 p.m. till 1 a.m.

SATURDAY — Prime rib and crab served from 6 till 9 p.m. "Sound Investment" plays from 9 p.m. till 1 a.m.

SUNDAY — Buffet brunch served from 10 a.m. till 1 p.m. Cook your own steak over a charcoal grill from 4 till 7 p.m.

MONDAY — Club is closed for inventory.

TUESDAY — Club is closed until 4:30 because of inventory. It reopens at 4:30 p.m.

WINDWARD ENLISTED CLUB

TODAY — Lunch from 11 a.m. till 1 p.m. Dining room opens from 5 till 8 p.m. Enjoy a meal off our new menu. D.J. in the Moongate Lounge from 7:30 till 11:30 p.m.

THURSDAY — Lunch from 11 a.m. till 1 p.m. Dining room opens from 5 till 8 p.m. with

an all you can eat smorgasbord. D.J. and "Country Lane" plays in the Moongate Lounge from 7:30 till 11:30 p.m.

FRIDAY — Lunch from 11 a.m. till 1 p.m. Dining room opens from 5 till 9 p.m. with a prime rib special. D.J. and "Pure Energy" plays in the Moongate Lounge from 8 p.m. till midnight.

SATURDAY — Dining room opens from 5 till 9 p.m. with a prime rib special. D.J. in the Moongate Lounge and "Black Widow" plays in the ballroom from 8 p.m. till midnight.

SUNDAY — Club opens with an all you can eat champagne brunch from 11 a.m. till 2 p.m. Dining room opens from 5 till 8 p.m.

MONDAY — Lunch from 11 a.m. till 1 p.m. Dining room opens from 5 till 8 p.m. with Italian Nite featuring all the spaghetti you can eat. "Chelsea Slim" plays in the Moongate Lounge from 7:30 till 10:30 p.m.

TUESDAY — Lunch from 11 a.m. till 1 p.m. Dining room opens from 5 till 8 p.m. with an all you can eat smorgasbord.

Feeling smart?

Education Programs what does the Corps offer?

Formal programs?

College programs?

see your Career Planner... he can do you some good.

MYODONTIC DENTURES

For those people who want superior dentures, we highly recommend this method. We are getting excellent results and they eliminate most of the conventional denture problems.



Kailua Professional Gtr Suite 503

WINDWARD DENTAL GROUP INC.
Lee Hardy, D.D.S. 261-4694

JAMES PAPAYOANOU, D.D.S.

is pleased to
announce the opening of his office
for the practice of

ORAL & MAXILLOFACIAL SURGERY

Office hours by appointment

Kailua Medical Arts Bldg.
407 Uluniu St., Suite 204
262-6961

Haleiwa Family Medical Ctr.
66-125 Kam Hwy., Suite 2
637-9652

If no answer, call 524-2575 Physicians Exchange

Spin the Disc & Win Prizes!

Come to the Kailua store & play the SELECT-A-NUMBER game! You must be a Video Center Club member to play, so now's the time to join!

BUY NOW & receive \$185 FREE Gift!



VR 9750J

VIDEO CENTER

2810 Paa Street
Ph. 636-5050

418-G Kuulei Rd
Ph. 261-2022

Buy the VR 9750J & receive:
★ \$125 FREE Movie Rental
★ \$50 FREE club membership
★ \$10 FREE Video Center t-shirt

HURRY! Limited to stock on hand

Join now & get TWO free spins! Buy a video recorder & get THREE spins! Any purchase gives you ONE free spin! Prizes include free movie rentals, a color TV, a video disc player & much more! All who spin WIN!

KDEO COUNTRY RADIO

Official! Top 10 Songs

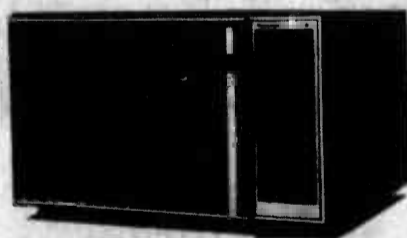
LAST WEEK	THIS WEEK	TITLE	ARTIST
2	1	You Don't Know Me	Mickey Gilley
3	2	Tight Fittin' Jeans	Conway Twitty
5	3	Party Time	T.G. Sheppard
4	4	Miracles	Don Williams
10	5	Scratch My Back	Razzy Bailey
7	6	Step By Step	Eddie Rabbitt
10	7	Takin' It Easy	Lacy J. Dalton
13	8	Today All Over Again	Reba McEntire
12	9	It Don't Hurt Me Half As Bad	Ray Price
14	10	Hurricane	Leon Everette

Listen to BILLBOARD Magazine's Top 40 Country Songs
Saturdays and Sundays at 9 a.m. on

KDEO Country Radio AM 94

The Best of Country, from the Country, 24 hours a day.

Ingenius.



DIMENSION 3 MICROWAVE/ CONVECTION OVEN NE-9900

3 Different ways to cook quickly, naturally and evenly. PLUS Panasonic's Unique COOK-A-ROUND Magnetic Turntable.

- The Convenience of MICROWAVE COOKING
 - Defrost, thaw and cook foods in a flash
 - Cook by Power and Time or by Temperature Probe
- The Tasty Appeal of CONVECTION COOKING
 - For Browning and Baking
 - Meats come out tender and evenly browned
 - Breads, pastries, cakes and pies done by constant circulation of dry, heated air
- The Unmatched Speed & Versatility of COMBINATION MICROWAVE/CONVECTION COOKING
 - The best of both worlds... fast cooking with eye appeal for meats, roasts, pork, lamb or poultry.

Panasonic
just slightly ahead of our time.

Available At Your Military Exchange

international haircutters

Koko Marina
Second Floor, Waterfront Village
395-7551

Aikahi Park Shopping Center
Kailua
254-1585

Monday-Saturday 9am-9pm
Sunday-10am-4:30pm

Monday-Saturday 9am-5:30pm
Fridays till 7:30pm

Association names ground officer

by Sgt Inez J. Stoner

Captain Don Schwartz Jr., Aircraft Maintenance Officer for Headquarters and Maintenance Squadron-24, asks no more from his troops than he gives himself. This leadership by example no doubt contributed to his selection, by the Marine Corps Aviation Association, as the Aviation Ground Officer of the Year.

"I'M REALLY honored to have been selected for this award," said Capt Schwartz, "but it rightfully belongs to the 119 men who worked with me that year."

Capt Schwartz has been with H&MS-24 since his arrival at the Air Station in August. He earned the title of Aviation Ground Officer of the Year, however, while serving as the Aircraft Maintenance Officer for Detachment A, Marine Aircraft Group-49, Naval Air Station, South Weymouth, Mass.

"There's no way one man can get this award," he announced in a voice heavy with a Bostonian accent. "It's impossible. I just happened to be the quarterback on the team. I'm accepting this award for those 119 men on my team."

Under the effective management of Capt Schwartz, the Marines of Det A, MAG-49

maintained a seven-day week maintenance schedule. This type of schedule was required to support a reserve detachment, due to the varying civilian working hours of reserve aviators.

CAPT SCHWARTZ and the Marines of Det A, MAG-49 were responsible for all facets of maintenance. "One man directs it all, but what it takes is a whole team," explained the captain. "I could work every day for 200 years and not accomplish what we could do together as a group in one day."

"It was the best outfit I've ever been with," he continued. "I loved to come to work. We all did, but we worked hard, 25 hours a day if we had to and if it was possible."

"I'd tell my troops, 'go call your wives and tell them you won't be home for dinner. Breakfast maybe, but not dinner. And when you're through, move over because I have to call my wife too.'"

WHILE AT NAS, South Weymouth, Capt Schwartz and his troops supported a number of reserve and interservice exercises all across the country. In addition, they appeared at a number of community fairs and air shows with static displays and flight demonstrations.

the Detachment's coordinator for the Marine Corps Reserve Toys for Tots program for three years. During his 1980 campaign, Marines from eight Reserve Units in the South Weymouth area collected 500,000 toys and distributed them to more than 85,000 children in the Boston area for Christmas. That same year Capt Schwartz was responsible for soliciting volunteers who raised \$45,000 to fight the little known children's disease Reves Syndrome.

TO RECOGNIZE his unselfish efforts in these and a number of other community projects, Capt Schwartz was honored, by a governor's proclamation, as the Man of the Year for the town of Billerica, Mass.

"I had intended to retire after MAG-49," said Capt Schwartz. "But when I found out they were sending me here I couldn't resist. I needed more time," he said, adding, "when I leave the Marine Corps I want to look back and say that I made something better somehow."

Capt Schwartz enlisted in the Marine Corps in 1961 and

reached the rank of gunnery sergeant before being selected for appointment to warrant officer in 1974. It was during that same year, as a gunnery sergeant, that he was named by the Marine Corps Aviation Association as the Fixed-Wing Aircrewman of the Year. In May 1976 Capt Schwartz was commissioned as first lieutenant as a limited duty officer.

DURING HIS 20 years in the Marine Corps he attended an Aviation Electrician School at the NAS, Jacksonville, Fla., the Quality Assurance School and a 3M

Maintenance Management Course at Norfolk, Va. Capt Schwartz also attended Maintenance Officer School in Memphis, Tenn.

Capt Schwartz served with Marine Medium Helicopter Squadron-262 in Vietnam from 1967 to 1968. He also served two tours in Iwakuni, Japan and with the Carrier Aircraft Group 5, MAG-12, aboard the USS Midway from 1976 to 1977.

The Air Medal with Numeral Five, the Navy Achievement Medal with Combat V, the Purple Heart and four awards of the Good Conduct Medal are among the Cap-

tain's personal decorations. In addition, he wears the Presidential Unit Citation, the Navy Unit Commendation and the Meritorious Unit Commendation.

Capt Schwartz and his wife, Patricia, have two children, Patrice, 14, and Joseph, 11.

AFTER RECEIVING the award for Aviation Ground Officer of the Year during ceremonies in Detroit, Oct. 8 through 11, 1980, Capt Schwartz plans to take leave and return to South Weymouth. He intends to present the award to those 119 Marines, who, he claims, helped him win the award.



Photo by Sgt Inez J. Stoner

AVIATION GROUND OFFICER — Captain Don Schwartz's interests extend beyond his job, which sometimes takes up "25 hours a day." While serving as the coordinator for the Marine Corps Reserve Toys for Tots Program, Detachment A, Marine Aircraft Group-49, Naval Air Station, South Weymouth, Mass., he and his Marines collected 500,000 toys and distributed them to more than 85,000 children for Christmas last year.



Photo by Sgt Inez J. Stoner

MARINE'S MARINE — Captain Don Schwartz, the recipient of the Aviation Ground Officer of the Year Award, understands his troops. Capt Schwartz worked his way through the enlisted ranks, to warrant officer, before being commissioned a first lieutenant. He is now the Aircraft Maintenance Officer for Headquarters and Maintenance Squadron-24.

AIKAI AUTO PARTS
OPEN:
Mon. thru Fri.
8:30-7:00
Sat. 8:00-4:00
Sun. 8:00-1:00

NAPA
BULKHEAD
EMERGENCY
TROUBLE LIGHT

\$11.98

CALL NOW
254-3535

SAVE ON A SOCKET SET!
Metric or American Standard
Variable 22-piece, 3/4" Drive Socket Set
with NAPA New Britain Guaranteed Quality

\$33.39*

CALL NOW
262-8146

KAILUA AUTO PARTS
OPEN:
Mon. thru Fri.
8:00-5:30
Sat. 8:00-4:00
Sun. 8:00-1:00

NAPA BULKHEAD
Master Cylinder
Master Kit

\$9.39

CALL NOW
262-8146

CLIP AND SAVE

FREE SPINAL EXAMINATION
Danger Signals of Pinched Nerves:

1. Headaches, Dizziness, Blurred Vision
2. Neck Pain, Tight Muscles, Spasms
3. Shoulder Pain, Pain Down Arms, Numbness in Hands
4. Pain Between Shoulders, Difficulty Breathing, Abdominal Pains
5. Lower Back Pain, Hip Pain, Pain Down Legs

Why FREE? Thousands of area residents have spine related problems which usually respond to chiropractic care.

This is our way of encouraging you to find out if you have a problem that could be helped by chiropractic care. It is also our way of acquainting you with our staff and facilities.

Examination includes a minimum of 10 standard tests for evaluating the spine and a contour analysis photo as shown above.

While we are accepting new patients, no one need feel any obligation.

Most Insurances Accepted

Pacific Chiropractic

DAVID L. HALPAIN, D.C. JEANNE C. HALPAIN, D.C.
WHEOCO BLDG., NO. 377
822 KAILUA ROAD
PHONE **261-0831**

The Windward Side's Only Candy Store

CHRISTMAS IS JUST AROUND THE CORNER

This year let us handle all your mailed gifts to friends, relatives and sweethearts.

NO FUSS, NO BOTHER, WE DO IT ALL!

Come in early and beat the Christmas rush.

— located at —
418C KULUEI ROAD • KAILUA
PHONE: **262-2100**
Next to McDonald's in the Municipal Parking Lot
(Where Pizza Pete's used to be)

SEPTEMBER...1981

GOOD YEAR

SALE ON STEEL IMPORT SIZES

ARRIVA RADIALS

\$39.95

VALUE — Even Its Footprint Tells You It's Different
VALUE — Gas-saving steel belted radial construction
VALUE — All-season year-round traction & performance
VALUE — Easy-rolling, long-wearing tread compound
VALUE — Stamina for front or rear wheel drive cars

Other Import Sizes Sale Priced Too!

HURRY! Sale Ends October 3!

RAIN CHECK — If we sell out of your size we will issue you a rain check assuring future delivery at the advertised price.

Custom Polysteel — Low Priced

Low Low Prices On These Polysteel Whitewall Sizes Too!

Whitewall Size	Also Fits	LOW PRICE	Plus P.E.T. And old tire
P195-75R14	D77B-14 ER78-14	\$64	\$2.26
P205-75R15	FR78-15	\$64	\$2.50
P215-75R15	GR78-15	\$75	\$2.64
P225-75R15	HR78-15	\$77	\$2.85

878-13 or P185-80R13
(Depending on availability) WHITEWALL tires \$1.89 or \$1.91 FEET And old tire

\$47

Custom Polysteel — The Radial That Keeps Its Feet Even In The Rain!

- Gas-saving radial ply construction
- Strength and penetration resistance of steel cold belts

Netel Rib count and sidewall styling vary with size. Not all tires look exactly like those shown.

TLA SPECIAL "ROOM & CAR PACKAGE"

Includes:

- RENTAL CAR by Trans-lease Hawaii Rent-A-Car
- DELUXE, Spacious Rooms with:
Air Conditioning
FREE Color Television
Room Service Available
- FREE Parking, Baby-sitter Referral
- Hotel Laundromat
- Swimming Pool
- FREE 24-Hour Airport Shuttle Service
- Kennels
- CREDIT CARDS:
American Express, VISA, BankAmericard, Carte Blanche, Diner's Club & MasterCard.
- Location on main bus line, convenient to all military installations, WAIKIKI, MAJOR ISLAND ATTRACTIONS AND AIRPORT.

Holiday Inn HONOLULU AIRPORT

Additional Conveniences:
Lei Maker's Garden Restaurant
Kalama Lounge
(with nightly entertainment)

TLA Approved Room & Car \$51⁰⁰ Per Day

ROOM ONLY \$38.00 Plus Tax per night

For Reservations & Information Call:
838-0661

Holiday Inn AIRPORT

NOW ON SALE: FOR PICKUPS, VANS, CAMPERS AND RV'S

FOR SOME FOOTED TRACTION ALL YEAR ROUND — ASK FOR TRACTION SURE GRIP		FOR HEAVY DUTY STRENGTH, PLUS LOW COST MILEAGE ASK FOR RH IN BULKER	
\$6⁰⁰	\$8⁰⁰	\$5⁰⁰	\$6⁹⁵
700-15 TT blackwall, Load Range C, plus \$3.37 P.E.T. No trade needed	750-16 TT blackwall, Load Range D, plus \$3.37 P.E.T. No trade needed	700-15 TT blackwall, Load Range C, plus \$3.37 P.E.T. No trade needed	750-16 TT blackwall, Load Range D, plus \$3.37 P.E.T. No trade needed

DON'T WAIT, SALE DEADLINE IS OCTOBER 2

GOODYEAR Just Say "Charge It!"

SEE YOUR GOOD YEAR DEALER FOR THE BEST AND LATEST TIRES, PRICES AND CREDIT TERMS AS SHOWN AT GOODYEAR SERVICE STORES IN ALL COMMUNITIES. FINANCING BY THE GOODYEAR FINANCIAL SERVICE COMPANY AT SELECTED LOCATIONS.

KANEOHE BAY SHOPPING CENTER

Manager: Phillip G. Smith

ANNIVERSARY SERVICE SALE!

SAVE 25%

ON SELECTED SERVICE. PLEASE CALL FOR DETAILS & APPOINTMENT.

Goodyear Revolving Charge Account

Phone: **247-6668**

Store Hours



COMMANDANT'S BRIEFING — Lieutenant Colonel James Brandon, Commanding Officer, 1st Battalion, 3d Marines, briefs General Robert H. Barrow on his unit's recent combat

readiness evaluation exercise, projected training and the upcoming Western Pacific deployment. The Commandant received the briefing Thursday during his visit here.



SALUTATIONS — General Robert H. Barrow, Commandant of the Marine Corps, greets Lance Corporal Tina St. Peter, Marine Fighter Attack Squadron-235. The General met several of the fighter squadron's leathernecks on his visit to the 1st Marine Brigade here Thursday.



THE GLARING FACTS — General Robert H. Barrow, accompanied by Captain Richard Roan, Commanding Officer, Company D, 3d Assault Amphibian Battalion, shades his eyes against the westering sun during a demonstration of the anti-

mechanical assault capabilities by Company L, 3d Battalion, 3d Marines. The demonstration was part of the Commandant's visit to the Air Station and the 1st Marine Brigade Thursday.



CONVERSATION WITH A TREE — General Robert H. Barrow, Commandant of the Marine Corps, discusses current anti-mechanized assault tactics with Sergeant Christopher Lindbeck, Company L, 3d Battalion, 3d Marines, 1st Marine Brigade. After the discussion, Sgt Lindbeck and his platoon displayed their prowess in a simulated enemy mechanized assault.



A FAMILY AFFAIR — General Robert H. Barrow, views a presentation of Family Services Center programs. The center, which provides many services to members

of the Air Station and the 1st Marine Brigade, was one of the Commandant's stops during his visit here Thursday.



HAVE YOU MADE ANY WESTERN PACIFIC TOURS? — General Robert H. Barrow talks about deployment and family separation with (left to right) Private First Class Bart Gaines, Staff Sergeant

Floyd Thompson, and First Lieutenant Ribert Layman, Marine Fighter Attack Squadron-235. The Commandant talked to many of the squadron's Marines during his visit Thursday.

LOOKS STRONG ENOUGH — The Commandant, General Robert H. Barrow, discusses the advantages of the external hoist over the old internal one with Sergeant Ira Baker, Marine Medium Helicopter Squadron-263. The General toured the Squadron during his visit here Thursday.

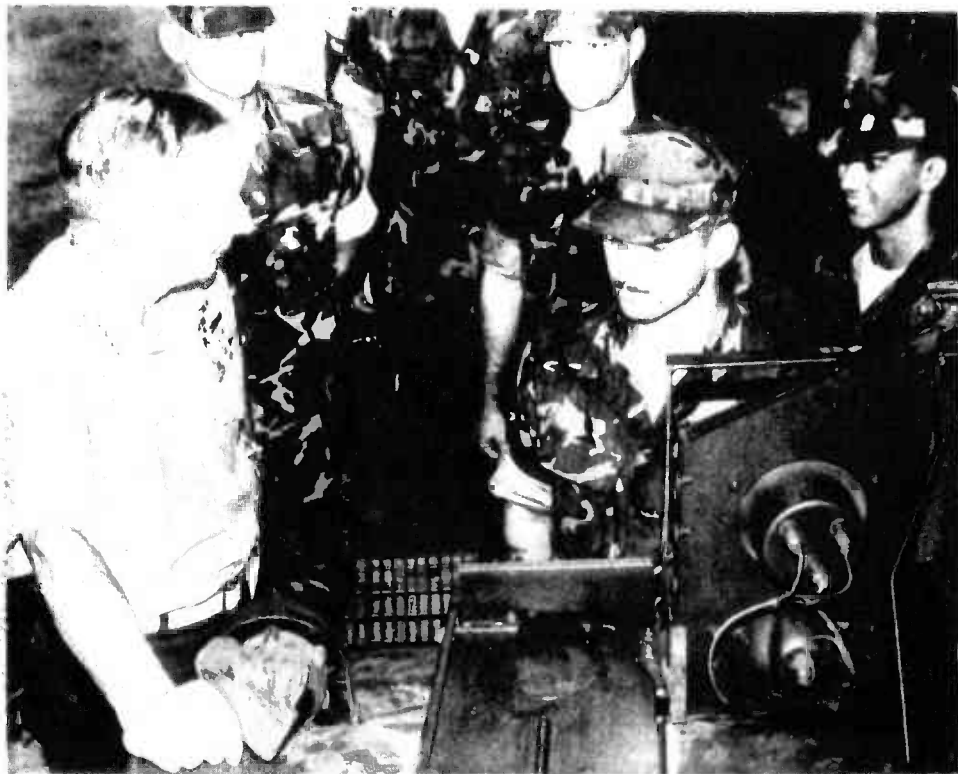
Photos by SSgt [unclear]

Commandant to

by Sgt Ernie Carter

General Robert H. Barrow, 27th Commandant of the Marine Corps was here for only half a day, but during his brief visit he measured out his time to see as many Marines as possible. The General started his visit with a briefing at Station Headquarters then moved on to the Training and Audio Visual Support Center where he met with officers stationed here. During part of that meeting he discussed problems in the Corps. He said, "Most of the problems in the Marine Corps, other than weapons and systems . . . are cor-

rectable if we concentrate on people." Marine Fighter Attack Squadron-235 was the Commandant's next stop. Among the subjects he breeched with the Marines and officers of the squadron was WESTPAC deployments and training. He asked the leathernecks of Marine Medium Helicopter Squadron-263, "What is the difference between an LHA and an LPH?" Their replies ranged from, "there is more room on the flight decks to it is more comfortable." After finding out what Corporal Patrick



IT'S GUARANTEED TO WORK — Lance Corporal Mark Zagar, Maintenance Company, Brigade Service Support Group, assures the Commandant that the truck he has been working on will work.

General Robert H. Barrow's next question, "if it doesn't, can I return it and get my money back?" The Commandant toured BSSG Thursday during his visit to the Air Station.



HOW DO YOU LIKE THE CORPS? — The top Marine, General Robert H. Barrow, Commandant of the Corps, receives a positive reply from Lance Corporal

Tony Truelove, Maintenance Company, Brigade Service Support Group. BSSG was just one stop during the General's visit here Thursday.

THE STARS FROM ABOVE — The highest ranking Marine, General Robert H. Barrow greets members of Marine Fighter Attack

Squadron-235 during his visit to the Air Station and the 1st Marine Brigade.



A PAUSE TO REFRESH — Sergeant Frank Pratz, Headquarters and Service Company, 3d Battalion, 3d Marines, (left) and Sgt Anthony Johnson, Headquarters and Service Company, 1st

Battalion, 3d Marines, offer Commandant of the Marine Corps General Robert H. Barrow refreshments after a briefing by 3d Marines' commanders.



"MOST OF THE PROBLEMS... ARE CORRECTABLE" — The Commandant, General Robert H. Barrow, talks about Marine problems during his visit to the Air Station and the 1st Marine Brigade. He told selected officers at one briefing Thursday, "Most of the problems in the Marine Corps, other than weapons and systems, are correctable if we concentrate on people."

by Joe Blackburn

ours the Brigade

St. Pierre and Cpl James McMahon, Maintenance Company, Brigade Service Support Group, jobs were he asked them if they were good at it. The reply was "Yes sir!"

The Commandant continued his tour of the Brigade by attending a briefing by 3d Marines' officers on their states of readiness and their training programs. The highlight of this part of the visit was Lieutenant Colonel James Brandon, Commanding Officer, 1st Battalion, 3d Marines' briefing on the results of his unit's recent Combat Readiness Evaluation Exercise and their preparations for the

upcoming WESTPAC deployment.

Action was the next part of the Commandant's visit as he toured the anti-mechanized assault course and viewed a demonstration by 3d Battalion, 3d Marines and the 3d Assault Amphibian Battalion.

The General's last two stops on his visit here were at Station Headquarters where he met with Air Station personnel and the Family Services Center where he was briefed on the Center's programs.

Before leaving the Air Station, the General attended a reception in his honor at the MCAS Kaneohe Bay Officers' Club.



TAKING A BREAK — General Robert H. Barrow, relaxes with leathernecks from Marine Medium Helicopter Squadron-265. The General discussed the differences

between landing helicopter assault ships and amphibious assault ships with the helicopter squadron Marines during his visit here Thursday.

by LCpl Charlie Marshall

But early in the second half LCpl Twigg, dodging on- with excellent field position, quarterback Sergeant Steve Mobley

Supply vs. MACS-2

MACS-2 had their problems also from the start of the game as they drove down to Supply's eight-yard line, but were stopped cold as they failed to score in the four downs. But after a **MACS-2** punt left them with excellent field position, quarterback Sergeant Steve Mobley

SUPPLY kicked off to start the second half and three plays later, GySgt Mills found speedster Pvt Bass open again for an 80-yard touchdown play.

BSSG kept the game alive with a fake reverse in which Sgt Mobley rolled left and completed a pass which brought his team down to the 10-yard line. Three plays later Sgt Mobley ran the ball in himself. A missed kick left the score at 13-12 in favor of BSSG.

With the score 16-12 in favor of MACS-2 and the clock ticking away the final minutes, Supply's quarterback, Sgt Mobley turned to Cpl Payne for the touchdown. The two-pass, 55-yard drive gave BSSG the lead again 18-16 with a minute left to play.

MACS-2 MOVED
the ball quickly into field goal range but when Cpl Rhamberg's kick went wide, so did

Photo by Sgt Pepper Day

ON THE RUN — Rolling to the right to avoid the oncoming rush, quarterback Lance Corporal Mike Twigg of 1st Radio Battalion unloads a pass during the first game of the season. The Engineers of

Brigade Service Support Group slipped past the Radiomen in the final seconds to win the game 8-7 at Pop Warner Field Sept. 14.

Sportnotes

Klipper sets policies for tee times

by Sgt Ernie Carter

GOLF COURSE
hours are from 7 a.m.
until 7 p.m. on
weekdays and from
6:30 a.m. until 7 p.m.
on weekends and
holidays.

"We start taking Saturday reservations on Tuesday at 7:30 a.m.," Baker said. "From 7:30 until noon active duty military

stationed in Hawaii or who pay monthly greens fees have priority on tee reservations. After noon, we accept retired military statewide who pay monthly green fees. All

While reservations for Saturday can be made on Tuesday and Sunday on Wednesday, Monday through Friday tee times can all be reserved on Thursday of the previous week.

GREEN FEES and golf cart rental prices at the Kaneohe Klipper vary, depending on the user of the facility.

Military golfers pay \$4 to golf 18 holes and pay \$6 to rent a cart for the 18. DoD civilians pay \$6 and \$8, and civilian guests pay \$9 and \$9 for the full 18 holes.

Klipper golfers may play all day after paying green fees for 18 holes, and fees are cut in half if the golfer only wants to play nine holes.

Baker added that frequent golfers may take Kaneohe Klippers memberships that pay for all green fees. The memberships are \$20 per month per person. Dependents under 18 can get the memberships for only \$5 per month.

Golf-pro Terry Young is also available at the Klippel Wednesday through Sunday for beginning golfers or the golfer who needs a little "help" with his game.

YOUNG GIVES
private lessons for \$8
per half hour and
group lessons to
groups of two to six
people for \$6 per hour.
He will also be holding
free clinics some time
after the first of the
year.

For golfing needs from balls to clubs the Klipper also has a Pro-Shop that is open from 8 a.m. to 5 p.m. weekdays and 7 a.m. to 5 p.m. weekends and holidays. The Pro-Shop is operated by the Marine Corps Exchange and exchange rules apply to purchase of equipment from the shop.

Finally, golfers who do not have their own clubs, or who didn't bring them to the course for whatever reason, may check out clubs free of charge at the Kaneohe Klipper. The Klipper has 20 sets of clubs including left handed sets for men and women.

The course staff ask that golfers return the clubs by 6:45 p.m. so they may be cleaned before closing.

IT TAKES about four hours to golf 18 holes or two hours for nine, so they ask that golfers judge their time accordingly. And just in case a golfer forgets what time it is, when he notices that all the flags are gone from the course, it is time to call it a day. The flags are taken in at 6:50 p.m.

Gunnery Sergeant James Kimble, Electronics Platoon, Maintenance Company, Brigade Service Support Group, with the help of two partners finished third in a state-wide dart throwing contest. A first place finish in the 2nd Annual Aloha Darting Association's Labor Day Tournament paid \$300 to the winning team, \$150 for second place and GySgt Kimble's team collected \$75 for their efforts at the match held Sept. 12 and 13 at the Ranch House Restaurant in Honolulu.

In the last issue of the Hawaii Marine it was reported that Sergeant Charles Whitener of Camp Smith lost his kickboxing bout to Airman 1st Class Rodney Lee of the Air Force. This was an error due to mistaken identification. The facts are Sgt Whitener did defeat his opponent in two rounds by technical knockout.

Organizational meetings for the Fall Recreational Softball League are scheduled for Thursday at 11:30 a.m. and 4 p.m. at the Station Theater Lobby. Team entry fees will be \$150 payable not later than Oct. 2. The league will start Oct. 9. Saturday and Sunday games will be played every other week and the season play-offs will end shortly before Christmas.

The Hawaii Kai Fun Runners are sponsoring the Val Nolasco Memorial Half Marathon run Oct. 18 starting 6:30 a.m. at the Hawaii Kai Tennis Center. Racing packets which include a map of the course can be picked up at the Kapiolani Park bandstand Oct. 17. Registration is \$4 without a T-shirt, \$8 with a T-shirt and deadline for entering is Sept. 30. Entry forms can be picked up at any store that sells running equipment, Marathon Clinics or by contacting the Hawaii Kai Fun Runners.

ENCHANTED TRAVEL, INC.

IATA **ARTA**

1051 Keolu Dr. in Kailua
(Next to Dairy Queen)

261-7947

OPEN M-F 9:00-5:00. SAT. 9:00-12:00

NOW HEAR THIS!

SUZUKI
SERVES THE
U.S.M.C.

don't miss the
KATANA

In Kenosha
48-144 Kahurangi
Ph. 235-3300

Full line of
Mopeds,
Motorcycles,
Parts & Service

MONTGOMERY MOTORS

The Varsity Boxing Team is now being formed and try-outs are 4 till 7 p.m. Monday through Friday at the field house in Kaneohe near Windward Community College.

Late entries are being accepted for the **Intramural Racquetball Program** which starts Oct. 5. Registration is at the Athletics Office.

Organizational meetings for the Intramural Bowling League will be Oct. 8 at 11:30 a.m. and 4 p.m. at the Station Theater Lobby. Unit representatives can pick up command authorization forms at the Athletics Office.

The University of Hawaii's accounting fraternity, Beta Alpha Psi, is inviting the Marines to participate in the BAPSI Scholarship Fun Run Oct. 11 starting 7:30 a.m. at Kennedy Theater on the University of Hawaii campus. Unofficial times will be recorded for the three divisions of runners—male, female and mixed teams. Each team consisting of 4 runners will complete 12 miles. Awards will be given to the first place finishers in each division but everybody gets a T-shirt. Entry forms must be completed by all team members and mailed with a \$24 payment to Beta Alpha Psi Scholarship Run, c/o Beta Alpha Psi, 2499 Halekoa Drive, Honolulu, HI 96821. For more information contact Peter Lenhart at 261-9184.

GET OUT OF DEBT

through Chapter 13

A federal law which helps to pay off your debts without borrowing and in payments you can afford, stops creditor harassment and law suits, protects your job, co-signers and property.

Initial consultation or info packet are without obligation.

Please call:

HOWARD Y. TANAKA
Attorney versed in Chapter 13 filings
Suite 703, Alii Bishop Bldg.
1136 Union Mall, Honolulu
Telephone: 526-1544

Yarn & Needlecrafts Ltd.

Phone 262-9555
151 Hekill St. (Across from Holiday Mart Theatre)



• Cotton Lora Reg. 2.75 NOW **1.75**
• Genie Reg. 2.75 NOW **1.75**
• Bulky Tweeds Reg. 4.00 NOW **1.99**
• Bulky Solids Reg. 5.00 NOW **3.49**
• Corky Reg. 1.95 NOW **1.39**

Mon. thru Fri. 9:30-4:30 p.m.
Wednesday 9:30-2:00 p.m.
Saturday 9:30-4:00 p.m.
Sunday 10:00-2:00 p.m.

The 1981 Hickam Military Invitational Golf Tournament tees off Oct. 1 at the Mamala Bay Golf Course.

The four-day 72-hole tourney is open to all active duty and retired military personnel, Department of Defense, and non-appropriated fund employees and their dependents.

Golfers registering for the tournament cannot have a handicap higher than 24. The players will be divided into four flights by handicap. Entry fee is \$30 and entry forms may be picked up at any military golf course on Oahu.

For more information about the tourney contact the tournament coordinator, Eugene Kraus, at 499-6517.

CONSOLIDATED THEATRES

KAM D.I. "SUPER" SWAP MEET
EVERY WED. - THURS. - SAT. & SUN.
7:00 AM TO 3:00 PM

Opp. Pearlridge Cntr. Ph. 536-3576 or 488-5822

WAIKIKI

WAIKIKI #1
 Seaside nr.
 Kalaheau
 923-2394

STARTS FRIDAY
MARSHA BRASH
KIRSTY MENCHOL
"ONLY WHEN I LAUGH" (PG)
 Call Theatre
 For Show Times

WAIKIKI #2

Free against
 \$ thousand.
 The odds are even.
"FORCE
TYPE" (R)
 1:00 + 3:00 + 5:00
 7:00 + 9:00 + 11:00 P.M.

WAIKIKI #3
 Kalaheau nr.
 Seaside
 923-5353

STARTS FRIDAY
JOHN BELUSHI
BLAIR BROWN
"CONTINENTAL
ODYSS" (PG)
 Call Theatre
 For Show Times

KUHIO #1
 2095 Kuhio
 941-4422

ENOS THOMPSON
BILL MURRAY
"STRIPES" (R)
TONIGHT:
 8:30 + 9:00 + 10:30 PM

KUHIO #2

ENOS THOMPSON
"HEAVY METAL" (R)
SHOWS:
 8:30 + 9:30 + 10:30 PM

KAPOLIANI
 1646 Kapoliiani
 955-5115

STARTS FRIDAY
"KILL SQUAD" (R)
 Call Theatre
 For Show Times

MAKAI

ASIAN CINEMA #1
 Herotania
 at Kakaemoku
 944-9644

STARTS THOMPSON
"TRAIL OF BLOOD"
 With Salsola
 Call Theatre
 For Show Times

ASIAN CINEMA #2

HIROSHI KATSURU
TOMMYLUI MAGSABANA
"THE FURY" (R)
 With Salsola
TONIGHT:
 8:00 + 9:30 + 10:15 PM

Varsity
 University
 nr. Birtania
 946-4144

BUCKLEY MOORE
LEA MURIELLI
"SOUTHWEST" (PG)
TONIGHT:
 8:30 + 9:15 + 10:15 PM

CINERAMA
 King nr.
 Kalaheau
 941-5291

STARTS FRIDAY
RYAN O'BRIEN
JACK WARRNER
"33" (PG)
 Call Theatre
 For Show Times

DOWNTOWN

HAWAII
 1130 Bethel
 536-6300

ALL SEATS \$1.50

FRIDAY SHOW:
"WOLFEN"
"THE SHINING"
 Call Theatre
 For Show Times

TOYO
 1020 College Walk
 538-1654

STARTS THOMPSON
PIPILO FILIPINO
EDDIE ROQUIERUE
"LIGAYA MO AT KASAWAAN KC"
 Call Theatre
 For Show Times

LIBERTY

1179 Nuanuu
 537-1686

STARTS THOMPSON
"IRON NECK LI"
"ONE ARMED KUNG FU MASTER"
 Call Theatre
 For Show Times

AREA 2 - PEARL CITY

KAM D.I. #1
 Moanalua nr.
 Kam Hwy.
 488-3835

"DEADLY BLESSING" (R)
 7:00 + 10:00 PM
"SEASIDE"
 9:00 PM ONLY
GATES OPEN AT 6:15 PM

KAM D.I. #2

STARTS FRIDAY
"KILL SQUAD" (R)
 Call Theatre For Second Feature
GATES OPEN AT 6:30 PM
SHOW STARTS AT 7:00 PM

PEARLRIDGE 1

Pearlridge Center
 487-5581

ENOS THOMPSON
GEORGE HARRISON
"ZORRO, THE BAY BLADE" (PG)
 SHOW
 8:15 + 9:15 + 10:15 PM

PEARLRIDGE 2

BURT REYNOLDS
"DART NEIGHBOR"
"THE CRIMINAL MIND" (PG)
ENOS THOMPSON
 8:30 + 9:00 + 10:00 PM

PEARLRIDGE 3

CHRISTOPHER REEVE
BENI HADJIMIS
"SUPERMAN II" (PG)
 TONIGHT
 8:30 + 9:00 + 10:15 PM

PEARLRIDGE 4

BROOKS SHIELDS
"LOVE OF TONIGHT"
 8:15 + 9:30 + 10:30 PM

HAULUA D.I.

917 Pali Highway
 261-6032

STARTS FRIDAY
"CONTINENTAL ODYSS" (PG)
"TOMMY" (PG)
"DAUGHTER" (PG)
GATES OPEN AT 6:30 PM
SHOW STARTS AT 7:00 PM
 Children Under 12 Not Adm.

AIKAI

Aikahi Park
 Shopping Center
 254-1330

Call Theatre
And Show Times

ALL SEATS \$1.50

**For information,
call Station Marina at 257-2219.**

**GRAHAM CELLULITE SALON
AND DIET CENTER**

50% OFF

**CELLULITE, WEIGHT CONTROL &
NATURAL FACELIFT PROGRAMS!**

**A SPECIAL MILITARY
OFFER AT OUR AIEA SALON
ONLY. EXPIRES SEPT. 30, 1981.**

**PH. 487-8088 or 737-5885
FOR FREE CONSULTATION**

***AIEA SHOPPING CENTER, SUITE 208**

**STEFFY'S AUTO BODY
& PAINT, INC.**

*Complete
Paint & Body
Reconditioning
Foreign & Domestic
Cars. Collision Insurance.*

★ FREE LOANERS

Guy Cayetano
—Owner—

261-8195

U.S. Navy Retired
Call Now

262-8080

131 Metrol St
in Kalamazoo
(Next to NAPA)

Show offers myriad of weapons

The Hawaii Historic Arms Association is sponsoring "Great Guns" the 9th Semi-Annual Gun Show scheduled for Saturday and Sunday at the Neal Blaisdell Center. The show is open to the public from 10 a.m. till 6 p.m. Saturday and 10 a.m. till 5 p.m. Sunday. Admission charge is \$1.50.

A highlight of this show will be a special display of some of the firearms used by Hawaii's famed Duke Kahanamoku during his

tenure as sheriff of the City and County of Honolulu. For the fans of "old West" America there will be exhibits reminiscent of pioneer days, including an engraved 1866 Henry Lever action rifle and Colt revolver pistols.

"Great Guns" will feature some 100 exhibits which will include edged weapons, antique and modern firearms, uniforms, insignia, badges, medals and other arms related items and publications. Numerous sports-

man clubs such as the Pig Hunters Association of Hawaii, Hawaii Black Powder Club, Oahu Marksman Association and other organizations will have various displays to augment the prevailing interest.

The show will offer excellent opportunities for all attending to discuss items of mutual interest and to buy, sell and trade. Buyers and collectors will be present to identify items on hand.

Awards are given for unusual and outstanding exhibits. Proceeds from the gun show are used to meet some of the organization's goals in public service and general armament education. Recently, the Hawaii Historic Arms Association gave the Bishop Museum a gift of cash for the restoration of a double barrel shotgun with case and tools which was manufactured in England for John Owen Dominis, consort to Queen Lili'uokalani.



Photo by LCpl Charlie Marshall

FORE — Gunnery Sergeant Mike Staiano, Marine Air Control Squadron-2, gazes down the fairway of the 11th hole before teeing off during the quarterly Cat Fight Golf Tournament. The Sept. 16 match was won by a foursome from MACS-2, Lieutenant Colonel Raymond Pollard, Commanding Officer, Sergeant Major Robert Blanc, GySgt Dennis Rautmann and Corporal Robert Ryan. Firing at net 60 on the par 72 course, the team defeated 17 other foursomes at the Florida Scramble. Fen Martin, a civilian technical advisor, hit a hole-in-one at the 146-yard par 3 sixth hole.



PROCLAMATION — Hawaii's Governor George Ariyoshi signs a proclamation that decrees Saturday as "Hunting and Fishing Day in Hawaii" as representatives from the K-Bay Rod and Gun Club and Department of Land and Natural Resources, Fish and Game Division witness. They are: (front row, left to right) Chief Warrant Officer-3 Howard Jines; Burt Nagai, President of K-Bay Rod and Gun Club; Petty Officer 1st Class Paul Richards; Lieutenant John Wallace; Chief Petty Officer Gary Purdy, President of K-Bay Rod and Gun Club; and Alan Ho, President of the Hawaii Rifle Association. (Back row) Staff Sergeants John Howard, Terry Steedman, Sergeant Keith Henry and Ronald Walker, Chief of the Wildlife Branch. USMC photo

• Blaupunkt • Concord • Craig • Clarion
SPECIAL \$135.00
Reg. \$225

Pyramid 80 Watt/10 Band Graphic Equalizer
Specializing in custom systems for your car.
Same day installation.
Auto Stereo Connection
3159 Koapaka St. 836-4055
(Behind Airport Ramada Inn) Mon.-Fri. 9-6
• Mitsubishi • Pioneer • Jensen • Marantz

50% OFF BERNINA 50 and VIKING 50 50% OFF

BERNINA 800 BACK BY POPULAR DEMAND FOR 5 DAYS ONLY
Sug. Retail \$650
• Demo Model
• Exclusive 25 Year Written Warranty
• Makes Buttonholes

VIKING 5710
Sug. Retail \$596
• Viking Electronic w/ Built-In Cams
• Overlock
• Blind Hem

\$325 • Open Arm
• Monograms
• Self Adjusting Tension

\$298 • Embroideries
• Self Adjusting Tension
• Free Arm

WE GUARANTEE THE LOWEST PRICES ON ALL OUR MACHINES

Quantities Limited
Hurry! Sale Ends Sun. 9/27/81 5 pm

PACIFIC SURPLUS
1247-F Pall Hwy. (1 block east of Castle Hospital in the new 7-11 Complex in Kailua)
Monday thru Saturday 10:00-9:00
Wednesday 10:00-8:00
Sundays 11-5
CALL NOW 262-8131

CRIME STOP **MCAS PMO**
257-2123

EYE ENCOUNTER
Now Open in Pearl City
Contact lenses \$89
Soft lenses \$129
Call 456-2622
One Day Service

SAFEWAY Where Everything's Right Including The Price

CHUCK ROASTS Blade Cut From Safeway Quality Beef \$1.57 LB.	PORK CHOPS Assorted Family Pack Both Ends and Centers \$2.09 LB.	TOP SIRLOIN STEAKS Boneless Extra Tender Safeway Quality Beef \$4.49 LB.	PILLSBURY Refrigerated Biscuits 3/\$1	MEAT PIES Manor House Frozen 2/\$1
PORK BUTTS Extra Lean Tender Porkers Frozen \$1.09	HICKORY SMOKED PICNICS Whole Bake Like Ham 98¢ LB. (Halves \$1.29 lb.)	OXTAILS Lean, Cut Up For Soups and Stews \$1.39 LB.	TUF 'N READY TOWELS Roll 99¢	ORANGE JUICE Scotch Buy Frozen 6 oz. 59¢
CHUCK STEAKS Meaty 7 Bone From Safeway Quality Beef \$1.89 LB.	CROSSRIB ROASTS Boneless Pot Roasts Safeway Quality Beef \$3.09 LB.	LARGE EGGS Lucerne Grade A Mainland Shelltreated Dozen \$1.17	7-UP, DIET 7-UP 12 oz. Cans 6 Pack \$1.89	CHERRY TOMATOES U.S. No. 1 12 oz. Basket 59¢ (Save 60¢)
BANANAS U.S. No. 1 49¢ LB. (Save 30¢ lb.)	BROCCOLI U.S. No. 1 59¢ LB. (Save 30¢ lb.)	MUSHROOMS U.S. No. 1 8 oz. Pkg. 99¢ PKG. (Save 70¢)	CALROSE RICE Town House 25 lb. \$7.49	SOFT DRINKS Cragmont Regular or Diet 12 oz. Cans 6 Pack 6/\$1.59

SAFEWAY SPECIAL STORE

Stores and prices in this ad are Sept. 23-Sept. 28, 1981

540 Ala Lihua St., Honolulu
1121 S. Beretania St., Honolulu
2001 S. Beretania St., Honolulu
1200 Pali Highway, Honolulu

90-1227 Kalia Highway, Kailua
1000 Kalia Dr., Kailua
4000 Kalia Highway, Kailua
70 Kalia Drive, Kailua

Paradise Pastimes

WITHIN THE GATES — The Koolau Players will present "The Boyfriend," a musical, Oct. 16, 17, 23 and 24 at the Boondocker.

The Boyfriend is a semi-comical love story set in the Roaring '20s at a girls finishing school on the Riviera in which at the stroke of midnight, everybody proposes to somebody.

All performances begin at 8 p.m., and tickets are \$5.50 for adults on opening night and \$4 for children 12 and under. Prices for subsequent nights are \$4 for adults and \$3 for children.

Tickets will be sold at the Exchange. The ticket sales schedule is:

Day	Time
Sept. 25	11 a.m.-2 p.m.
Sept. 26	11 a.m.-2 p.m.
Sept. 27	1 p.m.-2 p.m.
Sept. 30	1 p.m.-2 p.m.
Oct. 2	11 a.m.-2 p.m.
Oct. 3	11 a.m.-2 p.m.
Oct. 4	1 p.m.-2 p.m.
Oct. 9	11 a.m.-2 p.m.
Oct. 10	11 a.m.-2 p.m.
Oct. 11	1 p.m.-2 p.m.
Oct. 14	10 a.m.-2 p.m.
Oct. 15	10 a.m.-2 p.m.

BEYOND THE GATES — The third annual Firefighters Muster Competition will be held Oct. 17 at Richardson Center. The competing events include: Wet Race, Reverse Race, Bucket Brigade and Midnite Alarm. Every military and civilian fire department will be in competition for trophies and prizes. Tickets are now on sale for the luncheon and door prizes. Come on out for a day of fun, good food and refreshments. Deadline for ticket purchase is Oct. 12; no tickets will be sold the day of the event. Proceeds will be donated to a local organization for crippled children. For more information or tickets, contact Terry Ching at 471-9317.

The Banyan Tree Showroom is the scene for a journey through Hawaii's culture with "Ali'i Manu O'Kai" for one performance only, Sept. 26. The Dancers of the Rainbow (Mea Hula O Ke Anuenue) will perform ancient chants, popular "hapa haole" songs from the 1930s and 40s and graceful modern hulas. Featured performer and director, Ali'i Manu, will provide a special treat as he displays his talent for the ancient Hawaiian Falsetto style of singing.

A buffet dinner featuring steamship round of beef is served in the Banyan Tree Room from 6 till 7:30 p.m. before showtime at 8. The special military prices of \$13.95 for adults and \$10.95 for children under 12 include buffet, show and gratuity. Tickets are on sale at the Hale Koa Activities Desk (daily, 8 a.m. till 4 p.m.) and at all military ticket outlets.

The American Association of Respiratory Therapists for The American Lung Association is sponsoring Fiesta Mexico, Saturday at the Culture Hall, Japanese Chamber of Commerce. Entertainment will include music and dancing with the Arnie Reyes Band, Ballet Folklorico

Latino, the Barbosa Sisters and the Omega Dancers. Authentic Mexican food will be served and door prizes including a round-trip for two to Mexico will be given away. For more information call 734-0397.

Schofield Barracks, Hawaii — The 25th Infantry Division is holding a contest to develop a 25th Infantry Division song/march. Persons wishing to enter must submit their compositions to the 25th Infantry Division Adjutant General no later than Nov. 15, 1981.

Technical criteria for the composition is: Four or eight bar introduction/first strain of 16 bars repeated/second strain of 16 bars repeated/tri modulation up on perfect fourth/16 bars repeated (or not) first strain of trio/16 bar break strain not repeated/16 or 32 bar grandioso strain. All submissions must be original musical compositions.

First prize is a \$50 US Savings bond and a plaque with the name of the contest winner to be placed in the Division Historical Center.

A committee will be formed to judge all submissions, and reserves the right to reject any or all entries. All entries not selected will be returned to entrants. All entries must be marked by the composer as copyrighted (copyrighted by (name), (date)) and accompanied by an Assignment of Copyright. The Assignment of copyright form can be obtained in the Adjutant General's Office, 25th Infantry Division (Building 580, Room 350, Schofield Bks), or by calling 655-4866, and a form will be mailed.

CHEAP SHOTS — HONOLULU — Thursday gallery hours at the Honolulu Academy of Arts were changed to 11 a.m. till 8 p.m.

The new hours will accommodate after-work visits to special exhibitions and the museum's 27 permanent gallery installations of Asian, Western, Pacific, African and contemporary art. (Hours on Thursday were from 11 a.m. till 4:30 p.m. and 7 till 9 p.m.)

The new gallery hours may also be of interest to Thursday evening theatre patrons and after Oct. 1 to visitors with reservations for Thursday evening supper in the Garden Cafe. (For reservations, call 531-8865.)

Gallery hours on all other days remain the same: Tuesday, Wednesday, Friday and Saturday from 10 a.m. till 4:30 p.m.; Sunday 2 till 5 p.m.; closed Monday and major holidays.

The Honolulu Academy of Arts is a non-profit institution accredited by the American Association of Museums. Located at 900 South Beretania Street on Thomas Square, the museum is open free of charge.

The Academy is accessible to all visitors, including the handicapped. Reserved parking and accessible entrance for the physically handicapped are located on Ward Avenue.

MAKE SUCCESS A HABIT!

- Individualized education program (I.E.P.)
- Diagnostic testing
- Reading, language arts, math
- Learning and motivation problems
- SAT, SSAT, GED preparation, study skills
- All ages—all subjects—specialized instruction

FALL SESSION

DR 595-4781
Carol Wood, M.E.D., Director

Learning Development Resources

Honolulu, Aiea, Hahaione, Kailua, Pearl City

"Hot Muggy Summer Day" Shop The Cool Want Ad Way!!

CALL 235-5881 or 622-3966

• 10 CEMETERY PLOTS

HAWAII Memorial Park, cemetery plot \$1000 Call 668-1194 or 262-9806 ask for Helen.

VALLEY Of the Temples, 2 plots \$700 ea. Holy Cross Station 1 (Garden). Call between 6-9 p.m. Ph. 247-0660 259-5606 or 247-4088 for information.

• 20 LOST & FOUND

LOST Blue stone ring w/diamonds at Royal Kai drive-inn REWARD! 946-6277

• 25 PERSONALS

DARE to go bare, Nudist Park information & free visit, write P.O. Box 8417, Hon., HI. 96815

WANTED new wife. Nice looking, prosperous, businesswoman seeking a sweet faced lady, 50's, small family O.K. 30's to 40's. Send information, prefer photos, telephone number, to Mr. James Thompson at P.O. Box 222, Kaneohe, Hawaii, 96744.

IF you want to drink, that's your business. If you want to stop, that's ours. Alcoholics Anonymous, Ph. 946-1438

HAWAIIAN Swinger Magazine, Discreet Instructions. Send \$3.00 to Box 650-C, Waimanalo, HI. 96795

"DIAL-A-THOUGHT" 254-3245. Free Bible Lessons, 254-3132

• 35 PROFESSIONAL SERVICES

PAINTING, CLEANING (office or home) GENERAL REPAIR at the LOWEST rates ANYONE can afford! 6 years experience FREE ESTIMATES PH. 521-2541

"ISLAND-Wide Masonry" Patios, sidewalks, steps, driveways, block wall, stone wall, stucco, fire places, very reasonable. Free est., 671-9422.

FELIPE Yard and Housecleaning. Call 261-5050 between 2:00 and 8:00 p.m.

RETIREE Dependable Yard Service Call 262-7588

WALLACE Garden Service: Gen. yd. maintenance, trim hedges/shrubs, remove rubbish-Kahala. FREE EST. 365-1926.

PARKER BOOKS: Used paperbacks, new & collectible comics Buy, sell, trade, 909-A Lehua St. Pearl City. Hours Tues.-Fri. 10-6 p.m., Sat/Sun 10-5 closed Mon., 456-4996.

DIVORCE with attorney \$90 533-4533

NEED A cabinet maker and can't afford high prices? Call Re-Mann Inc., Ph. 671-2971 FREE ESTIMATES.

CARPENTRY, home repairs. Phone 261-7176 mornings or evenings.

PAINLESS CHIROPRACTIC FREE exam CALL Dr. Bart Smith at 526-0426

HAIR SERVICE Feather Dusters of Hawaii Phone 395-0022

CABINETS & Counters falling apart — need shelves or custom work? Free Estimates 395-8336 Creative Woodwork & Design

CARPENTRY by Al. Free Estimate Ph. 235-5658

• 35 PROFESSIONAL SERVICES

LOW Auto and Homeowner Rates "Buzzy" Stice

Call 235-4438 for appt.

CARPETS, & Hardwood flooring, sales & installation. Save on discontinued stock. Call Frank, 261-2233.

WINDWARD WOODWORKS, additions, alterations, repairs, & cabinetry. FREE Estimates. 239-5419.

SECRETARIAL SERVICES all forms of typing inc. Medical and legal. Call Linda 254-4823.

DESIGNER custom-made, all types of garments and alterations. Ph. 262-4949

EXPER a health oriented Therapeutic Swedish Massage Women/men for appt. 239-7735, Sandy Grudmanis, Lic. massage therapist. Kaneohe.

UNIQUE PERSONALIZED WEDDINGS Performed at your romantic location. Call 395-9631 for details.

FOR all your building maintenance & plumbing, Lic. C-7206. Call 734-2753 Walley.

"MAINTENANCE Experience" Yard Service Clean-up Call J.B. at 261-1496

LIGHT hauling, reasonable rates. Call 668-2287

HUGS Yard Maintenance Quality work, fair prices We care and it shows. Husband and wife team. Call 261-3845

KAILUA Masonry - Additions, Slabs, Tile walls, Patios, Driveways. Free Estimates. Very reasonable. Call 261-3584

PREGNANT AND WORRIED? WE'LL HELP FREE P.G. TEST MON.-WED. FRI. 9:00 to 12:00 262-2171 or 622-1532

"Busties" — LET US DO IT! Cleaning, water plants, food dogs, tutor, painting, wash windows, shopping, visit elderly, parties, etc., etc. 537-4658, 261-4966

WE CAN IMPROVE YOUR YARD Tropical & rock garden, lawns, cement work, walls, sprinklers, fences. Free Est. C-11117 422-9556, 488-8381 H. Higg, Jr.

CLEANING Services, Residential, Commercial, 521-2331, Res. 262-0787.

KELLI LEE'S FRIENDSHIP UNLIMITED P.O. Box 10700, Honolulu, HI 96816-0700. Kelli Lee 1981

FIND YOUR OWN SPECIAL FRIEND To print a letter: send \$17.00 for the first 25 words or less (plus 75¢ for each extra word). To answer letters: enclose \$4.00 with each letter you want forwarded (or three letters for \$10.00). Letters to members should be placed in separate unmarked envelopes with the identification number of the member clearly marked on the back of the envelope. Kelli Lee reserves the right to edit or reject any copy.

GENTLEMEN M126: Attractive 22 yr. old Oriental male. Interests: jogging, weight lifting, sports, traveling, going to movies, & dining in expensive restaurants. Seeks a warm, sincere woman 18 to 23 yrs. old.

M130: Hardworking Caucasian bachelor, 38. Expert at preparing TV dinners & keeping slim. Also plays tennis for fun, enjoys hiking & reading, the beach & travelling good music & art. Would like to dine & have pleasant conversation with a nice, sincere, intelligent Oriental woman. Please help me kick the TV dinner habit.

L218: Attractive Oriental teacher, 5'5", mid-30s, enjoys tennis & outdoor sports. Listening to contemporary & Hawaiian music, movies, dancing, & dining. Seeks a professional, warm, sincere person.

L220: Attractive Oriental teacher, early 30s, interested in music, art, travel, symphony, tennis, reading, jogging, yoga. Seeks intellectual & active man with similar interests.

M132: Caucasian executive, 33, 5'10", 165 lbs. Enjoys conversation, dinner, plays & travel. Sports — just swimming, sailing. Well-groomed, stable & secure. Wishes to meet attractive, well educated woman 28-33 in good career.

M138: Oriental, handsome, hard working bachelor, 5'4", 155 lbs. Likes to go to movies & disco. Would like to dine & have pleasant conversation with a sincere, intelligent, Oriental woman.

L228: Caucasian, 37, 5'10", 155 lbs. Enjoys swimming, travel, photography, reading, animals. Seeking professional man who is warm, sociable, looking for marriage, & will accept one child.

L226: Attractive, petite Oriental would like to meet fun-loving, self-sufficient gentleman, who enjoys dining, dancing, travelling, outdoor activities & the single lifestyle.

• 45

PIANO instruction, BA degree, child or adult, 4 openings. Reasonable. Ph. 262-5793

SPELL WITH PHONICS IMPROVE READING Easy Phonics Method Beginning remedial reading, Grammar, comprehension. Any level. Adult individual tutoring. Qualified experienced reasonable. 262-7242

ORGAN - PIANO Lessons John Schoulen 235-2010 or 247-6010

PIANO Lessons given by experienced pianist. Call 235-3079

GUITAR & Voice lessons. Professional teacher & performer. Beg., & Advanced. 262-8408

BELLY-DANCING beginner classes starting Oct. 6 at Solomon School. 1 hr./wk., 6 wks., \$20. Register now 624-3689

PIANO Lessons: Pearlridge area. Beginners of all ages. Call 487-2774 after 5 p.m.

SUZUKI violin and piano lessons. All locations. Age 2½ and up. 455-8850

PIANO Lessons, Classical, Popular, or Chord Method. Ph. 235-4432

PIANO Lessons, your home or mine. Kailua area. 262-5152

FREE Jazzercise class. Kaneohe, Pearl Harbor. Call 487-6071

PIANO instruction, Military-experienced qualified teacher—home. Reasonable rates. 625-2313

• 35 PROFESSIONAL SERVICES HALLOWEEN Special! Parties for October \$100/3 hours. Starfire Mobile Music 671-1585

WE CAN IMPROVE YOUR YARD Tropical & rock garden, lawns, cement work, walls, sprinklers, fences. Free Est. C-11117 422-9556, 488-8381 H. Higg, Jr.

CLEANING Services, Residential, Commercial, 521-2331, Res. 262-0787.

KELLI LEE'S FRIENDSHIP UNLIMITED P.O. Box 10700, Honolulu, HI 96816-0700. Kelli Lee 1981

FIND YOUR OWN SPECIAL FRIEND To print a letter: send \$17.00 for the first 25 words or less (plus 75¢ for each extra word). To answer letters: enclose \$4.00 with each letter you want forwarded (or three letters for \$10.00). Letters to members should be placed in separate unmarked envelopes with the identification number of the member clearly marked on the back of the envelope. Kelli Lee reserves the right to edit or reject any copy.

GENTLEMEN M126: Attractive 22 yr. old Oriental male. Interests: jogging, weight lifting, sports, traveling, going to movies, & dining in expensive restaurants. Seeks a warm, sincere woman 18 to 23 yrs. old.

M130: Hardworking Caucasian bachelor, 38. Expert at preparing TV dinners & keeping slim. Also plays tennis for fun, enjoys hiking & reading, the beach & travelling good music & art. Would like to dine & have pleasant conversation with a nice, sincere, intelligent Oriental woman. Please help me kick the TV dinner habit.

L218: Attractive Oriental teacher, 5'5", mid-30s, enjoys tennis & outdoor sports. Listening to contemporary & Hawaiian music, movies, dancing, & dining. Seeks a professional, warm, sincere person.

L220: Attractive Oriental teacher, early 30s, interested in music, art, travel, symphony, tennis, reading, jogging, yoga. Seeks intellectual & active man with similar interests.

M132: Caucasian executive, 33, 5'10", 165 lbs. Enjoys conversation, dinner, plays & travel. Sports — just swimming, sailing. Well-groomed, stable & secure. Wishes to meet attractive, well educated woman 28-33 in good career.

M138: Oriental, handsome, hard working bachelor, 5'4", 155 lbs. Likes to go to movies & disco. Would like to dine & have pleasant conversation with a sincere, intelligent, Oriental woman.

L228: Caucasian, 37, 5'10", 155 lbs. Enjoys swimming, travel, photography, reading, animals. Seeking professional man who is warm, sociable, looking for marriage, & will accept one child.

L226: Attractive, petite Oriental would like to meet fun-loving, self-sufficient gentleman, who enjoys dining, dancing, travelling, outdoor activities & the single lifestyle.

LADIES M132: Caucasian executive, 33, 5'10", 165 lbs. Enjoys conversation, dinner, plays & travel. Sports — just swimming, sailing. Well-groomed, stable & secure. Wishes to meet attractive, well educated woman 28-33 in good career.

M138: Oriental, handsome, hard working bachelor, 5'4", 155 lbs. Likes to go to movies & disco. Would like to dine & have pleasant conversation with a sincere, intelligent, Oriental woman.

L228: Caucasian, 37, 5'10", 155 lbs. Enjoys swimming, travel, photography, reading, animals. Seeking professional man who is warm, sociable, looking for marriage, & will accept one child.

L226: Attractive, petite Oriental would like to meet fun-loving, self-sufficient gentleman, who enjoys dining, dancing, travelling, outdoor activities & the single lifestyle.

SCHOOLS & TRAINING

MATH & French tutoring by qualified College student. Ph. 262-8381 after 5 p.m.

KAHALA Tutor English, math, ACT, SAT, TOEFL, Real Estate math. \$12 hr. 737-3704.

HONOLULU Music Institute: Group and private instruction in: Guitar/Piano/Cello/Woodwinds/Violin. Honolulu 521-1515.

Hawaii Maki MATHEMATICS LEARNING CLINIC Individual Counseling By Appt. 261-8106

GUITAR Lessons. Your home or mine. Honolulu Area. Call 396-9165.

MEADOW FRESH AN EXCITING NEW DAIRY DRINK! ULTIMATE PRODUCT ULTIMATE MARKETING PROGRAM

Looks & tastes like milk — Nutritionally comparable to milk — Lower calories & cholesterol — Costs much less than milk

Ground floor opportunity — Tremendous resale potential — No inventory or bkgp. — Low investment required

To schedule for an appointment in your area CALL 396-8464

SUNSHINE SCHOOL I & II Self-directed Participation For Your 2.5 Yr. Old Child in

• Art • Music • Small Classes • Responsibility • Positive Self-Image • Reading and Math Readiness • In Kailua

Enroll Now 261-8278 or 262-0469

SUNSHINE SCHOOL I & II Self-directed Participation For Your 2.5 Yr. Old Child in

• Art • Music • Small Classes • Responsibility • Positive Self-Image • Reading and Math Readiness • In Kailua

Enroll Now 261-8278 or 262-0469

SUNSHINE SCHOOL I & II Self-directed Participation For Your 2.5 Yr. Old Child in

• Art • Music • Small Classes • Responsibility • Positive Self-Image • Reading and Math Readiness • In Kailua

Enroll Now 261-8278 or 262-0469

SUNSHINE SCHOOL I & II Self-directed Participation For Your 2.5 Yr. Old Child in

• Art • Music • Small Classes • Responsibility • Positive Self-Image • Reading and Math Readiness • In Kailua

Enroll Now 261-8278 or 262-0469

SUNSHINE SCHOOL I & II Self-directed Participation For Your 2.5 Yr. Old Child in

• Art • Music • Small Classes • Responsibility • Positive Self-Image • Reading and Math Readiness • In Kailua

Enroll Now 261-8278 or 262-0469

SUNSHINE SCHOOL I & II Self-directed Participation For Your 2.5 Yr. Old Child in

• Art • Music • Small Classes • Responsibility • Positive Self-Image • Reading and Math Readiness • In Kailua

Enroll Now 261-8278 or 262-0469

SUNSHINE SCHOOL I & II Self-directed Participation For Your 2.5 Yr. Old Child in

• Art • Music • Small Classes • Responsibility • Positive Self-Image • Reading and Math Readiness • In Kailua

Enroll Now 261-8278 or 262-0469

SUNSHINE SCHOOL I & II Self-directed Participation For Your 2.5 Yr. Old Child in

• Art • Music • Small Classes • Responsibility • Positive Self-Image • Reading and Math Readiness • In Kailua

Enroll Now 261-8278 or 262-0469

SUNSHINE SCHOOL I & II Self-directed Participation For Your 2.5 Yr. Old Child in

• Art • Music • Small Classes • Responsibility • Positive Self-Image • Reading and Math Readiness • In Kailua

CAN YOU USE \$2000 THIS MONTH?

Earn it in parttime sales.

Our sales are booming! We're selling beautiful 10,000 sq. ft. homesites in the fastest growing state in the country—Florida. Some buyers purchase to build. Others simply to invest in Florida before prices run away. Our 9% interest rate helps! If you have your Hawaii State real estate license and if you enjoy matching people with their dreams... call us. We're the franchise for General Development Corp.—one of the country's largest community developers and home builders.



Michael L. Barker President

U.S. PROPERTIES, INC.

Phone: 946-2148 Century Center Suite 3601

Kramer's
IT'S A MAN'S WORLD
PRE-INVENTORY SALE 20% OFF
Entire Stock On Items Listed

"Famous Makers" JEANS

Now 19⁹⁹-32⁹⁹ Reg. 24.00-40.00

Fashion, size depends from 28-36. Limited quantities. While supplies last.

"Fashion" BIKE SHORTS

Now 13⁹⁹-22⁹⁹ Reg. 17.00-28.00

Casual, sporty style. By Olsen. Fashion, size depends from 28-36. Limited quantities. While supplies last.

• 114 REAL ESTATE FOR SALE

North Shore of Oahu. Mokuia Sand Condominium. Fee Simple 1 Bdrms. across from beach. Prices from \$50,000 to \$60,000. For information call Real Estate Gallery 955-4402.

KAILUA: Aikahi Gardens 3 bdrm., 2 1/2 bath, high assumable mortgage at 11%, low lease. Ideal starter home or investor special w/new tax law. MLS 57181, \$93,000. KANEHOE: Yacht Club Terrace, 3 bdrm., 2 1/2 bath, quiet park setting on Cui-de-sac. Low lease, A/S, VA, FHA, O.K., ERA Warranty, MLS 57283, Owner/Intror is (R) \$125,000. KAILUA/Maunawili: Spacious 4 bdrm. separate dining room, corner lot, many extras, 5 yr. A/S possible. Lease MLS 59882 below market at \$147,500. ERA Warranty. WAHIAWA/Woodwinds, FEE 1 bdrm., 1 bath, prime lake view, furn., A/S, VA, O.K., MLS 54141 ERA Warranty. Owner/Intror is (R) \$62,000. ERA Larry Redden Realty, Inc. 261-6211

CONV. Appraisal Priced Best Buy in Kailua! 4 Bdrm., 2 Ba. \$127,500 Fee MLS 56905 G. Lee (RA) 689-6586

Don't Pay Rent. Buy this LH 3 Bdrm., 1 Ba. townhome near beach. \$65,500 MLS 59615 G. Bryant (RA) 689-5261

\$125,000 3 Br./2 Ba. w/pool FS home. 4774 level lot. MLS #59989. Wes Bryant (RA) 671-4511/689-5261

SML down, Low Interest Rate! 2 Bdrm. nr. military base. \$69,900 FS. MLS 55822 Lila Murakami (RA) 671-2995

Vacant lot approx. 6100 sq. ft. Fee MLS 58007. Nice neighborhood & view \$50,000 W. Bryant (RA) 689-5261

Underpriced to sell now! Spacious 4 Bdrm., 2 bath townhome is EZ to buy at only \$89,900. Low lease. Call D. Lehman (RA) 672-3483 mls #58013

Renting is Non-cents. E-Z to own. 1 Bdrm., cpt. drps., pool. \$58,900. Fee mls #57909 Dot Walters (R) 455-3245

"Don't Wait To Buy Real Estate. Buy & Wait" Location indicates value! \$77,500 LH mls 58906 C. Kukahiko (RA) 455-5852

Great Location! Seller open to terms. 1 Bdrm., 1 Bath \$79,000 LH Call Mike Amuro (R) 671-2995 mls 57808

Waipahu Office 671-4511 Mike McCormack, Realtors Open 8-8

LOW priced 3 Bdrm., 1 1/2 Ba. home. Moanalua Hl. Ideal area. \$179,500 FS mls 57812 E. Lareau (RA) 455-3295

Super assumption or A/S! 2 Bdrm., + den end unit w/view. \$118,500 LH K. Araki (R) 622-1748 mls #56165

179 sq. ft. lanai, end unit, 1 Bdrm., 1 Bath FS \$73,500. Call K. Araki (R) 622-1748 mls 56618

Perfect no-down VA for 2 2 Bdrm. \$102,000 LH. Lowest Colonnade. Susan Roberts (RA) 488-2098 mls #59266

6% Assumption! 2 Bdrm., 2 Bath 24 hr. security. \$110,000 LH S. Roberts (RA) 488-2098 mls #57507

Pearlridge Terrace #203 Best priced 3 Bdrm. 1 Bath unit \$83,000 LH Zennie (RA) 488-1991 mls # new.

Pearlridge 488-1991 MIKE MCCORMACK, Realtors

KAHE-KAI #C304 & #A302, both of the above units are in prime Bldg. locations w/2 parking stalls. Price \$81,500/\$57,500 respectively. Very low down & owner will take back financing. Wide open to terms. MLS #54734 & 60695. Lease. Call Fred Page (PB) 672-3844

HOLIDAY Village, \$51,950. Lowest priced unit in bldg., & it's fully furnished. OPEN TERMS! Nice studio in excl. bldg., & area. Lease. TML 1-2-3-021-028. Call Ron Fredericks (RA) 944-1490

MAKAKILO Townhouse, VA assumption-Makakilo Hale 1 at 92-924 Wileo St. #60. Beautiful upgraded 3bdrm, 1 1/2 bath w/beautiful Diamond Head ocean view. MUST SEE! Very low down & assume a 13% VA mortgage lease MLS: New \$105,000. PALEHUA Townhouse, 92-960 Makakilo Dr. #57. Here is another exceptionally beautiful home, 3 bdrm., 1 1/2 bath w/beautiful landscaped courtyard. Very low down & assume 14% VA mortgage FEE Simple, \$9511 \$109,350. Let's talk these over. call Fred Page (PB) 672-3844.

• 114 REAL ESTATE FOR SALE

MAKAKILO: A great opportunity. Half townhouse for under \$3000. Take immediate occupancy. Call Calvin 684-2184, 672-8472.

• 120 FURNITURE

COUCH & Matching chair \$50. Call 261-8078
7 PC. modern dining room set \$300. Call 688-2287
KENMORE washer, 1 yr. old \$250; queen bed set \$150; single bed \$75; hideabed \$150; swivel rocker \$75; electric bed \$200; heavy duty dryer \$100; coffee table w/2 end tables \$100; papasan rattan couch & footstool \$200. Call 623-7074
GOOD Cond., rust/brown reclining chair, \$75 Call 254-1622.
SIMMONS king bed, excl. cond., \$100/best offer. Call 625-0594 Milliani.

DOUBLE Bed & Dresser \$175. New 6 chair dinette set, \$150. Call after 4 p.m., 235-5146.

BUNK bed w/ladder, no mattress, \$60. Call 261-5261

BLUE Sofa & Love seat, \$150; 7' Queen sofa, \$150. Frigidaire refrig. \$75 firm. sewing machine table, \$16. double bed w/headboard, 629-4525.

PARADISE USED FURNITURE Double sofa bed, like new \$250; buffet/cupboard cabinet \$195; 7 pc. dinette set \$95; love seat, sofas \$60 & \$150; maple couch \$60; antique camphor wood carved chest \$450; old Lane cedar chest \$200; tea cart \$125; maple rocker \$75; 8 dr. dresser \$125; 3 sectional wall unit w/chair \$350; swivel patio chairs \$50 ea.; long folding table \$60. pr. of 1920 over-stuffed his & her chairs \$150, antique oak rolltop desk \$750 & much, much more. 261-8492, 320 Uluniu St., Kailua. WE BUY USED FURNITURE

LOVE Seat, newly upholstered, \$65. Green vinyl recliner \$85. 235-3231.

• 120 FURNITURE

PUNE Corner unit w/table & AM/FM Radio, excl. cond., \$300; double mattress w/frame, \$50. Ph. 488-0272.

MAGNAVOX Star system walnut cabinet \$1200 or offer; sofa 78" brn/gold plaid \$125/offer. 946-8652.

LOW Back wicker couch/chaise, \$350/offer. 6 drawer chest \$65. 261-0461.

DININGROOM set, 8' pc., 2 Mr/Mrs maple dressers, 1 with mirror, all \$200. 836-7582.

SIMMONS metal 3 drawer dresser w/bench, good cond., \$75. Ph. 261-5839.

\$\$\$ CASH \$\$\$ for used furniture 537-9181 or 395-6264

PARADISE USED FURNITURE Double sofa bed, like new \$250; buffet/cupboard cabinet \$195; 7 pc. dinette set \$95; love seat, sofas \$60 & \$150; maple couch \$60; antique camphor wood carved chest \$450; old Lane cedar chest \$200; tea cart \$125; maple rocker \$75; 8 dr. dresser \$125; 3 sectional wall unit w/chair \$350; swivel patio chairs \$50 ea.; long folding table \$60. pr. of 1920 over-stuffed his & her chairs \$150, antique oak rolltop desk \$750 & much, much more. 261-8492, 320 Uluniu St., Kailua. WE BUY USED FURNITURE

LOVE Seat, newly upholstered, \$65. Green vinyl recliner \$85. 235-3231.

PARADISE USED FURNITURE Double sofa bed, like new \$250; buffet/cupboard cabinet \$195; 7 pc. dinette set \$95; love seat, sofas \$60 & \$150; maple couch \$60; antique camphor wood carved chest \$450; old Lane cedar chest \$200; tea cart \$125; maple rocker \$75; 8 dr. dresser \$125; 3 sectional wall unit w/chair \$350; swivel patio chairs \$50 ea.; long folding table \$60. pr. of 1920 over-stuffed his & her chairs \$150, antique oak rolltop desk \$750 & much, much more. 261-8492, 320 Uluniu St., Kailua. WE BUY USED FURNITURE

LOVE Seat, newly upholstered, \$65. Green vinyl recliner \$85. 235-3231.

• 126 MISCELLANEOUS

PLANTS: 710-15 tires; chest of drawers; misc. tables; record cabinet; swivel chair. Call 254-4274

HOUSEHOLD Furniture, buffet; 6 bar stools; outdoor furn., Japanese screens. 395-8652.

SMALL Samoan coconut trees, \$3 each. Ph. 261-6648

HIGH Chair, clothesline; sofa bed; other misc. Ph. 254-4555 anytime.

Alea Air Conditioning & Refrigeration We pay cash for used/unwanted air conditioners, refrigerators & freezers. Sales, service & repairs on all makes & models of room air conditioners, refrigerators & freezers. Ph. 487-7479

WASHER \$155; dryer \$110; hand mower \$19; Axal reel to reel tape recorder \$105/offer; dehumidifier \$60. 262-0324

8' ALUM. slid. glass door & window with screens: \$150/\$50; misc. 621-5526

24" SOLID State color console TV \$150; girls' 24" bicycle \$35; 2 swivel bar chairs \$40 ea.; Van bench seat \$20; tires/wheels \$10; golf clubs/bag \$35. 422-8694.

MISC. For sale: 2.5 cu. ft. refrig. \$175; IBM elec. typewriter \$150; desk \$75; Cannon adding machine \$200; 19" color TV, \$150. Call after 6 p.m. 261-7652.

• 121 FURNITURE FOR RENT

BED RENTALS AND SALES DAILY • WEEKLY MONTHLY RATES OPTION TO BUY PLAN ALL SIZE BEDS • CRIBS • WATERBEDS • DELIVERY ANYWHERE ON OAHU BED RENTALS, HAWAII 3632 WAIALAE AVE HONOLULU, HI. 735-2448

• 126 MISCELLANEOUS

MARY Kay Cosmetics. For Free Facial & reodor. Call Elizabeth 262-0463

VACUUM Cleaners reconditioned w/warranty, \$19.95 & up. Windward Vacuum Sales & Service. Call 239-8678.

HORSE Manure, \$5 for 60 lbs., call 261-9450.

MOVIE camera-Bell & Howell. Super 8, has many features, brand-new \$100/offer. Call 623-2950 after 5 p.m.

REFRIG. Brown, auto, ice maker; good cond., side by side. \$265. Ph. 254-1416

SAVAGE 3030 Rifle \$100. Seaduck dive vest, \$100. Ph. 259-5744

TEAK Chest of drawers, \$125; Western scenes oil paintings, \$100; Pioneer amp \$225; Elec turntable, \$90; ARA speakers, \$90; Wharfedale speakers \$125; Roll top desk, \$150; RCA console TV, 21" color, \$375; Portable dishwasher \$295; Antique marble top dresser & 2 nite stands, \$450; Leather chair, \$75; Braun slide projector, \$75; Projector screen, \$25; Bundy clarinet \$200; Honda guitar, \$25; Whirlpool freezer \$325; Tai Ping rug \$75. Call 262-9595 after 7 p.m., offers accepted. Hagglers welcome.

WASHER \$155; dryer \$110; hand mower \$19; Axal reel to reel tape recorder \$105/offer; dehumidifier \$60. 262-0324

8' ALUM. slid. glass door & window with screens: \$150/\$50; misc. 621-5526

24" SOLID State color console TV \$150; girls' 24" bicycle \$35; 2 swivel bar chairs \$40 ea.; Van bench seat \$20; tires/wheels \$10; golf clubs/bag \$35. 422-8694.

MISC. For sale: 2.5 cu. ft. refrig. \$175; IBM elec. typewriter \$150; desk \$75; Cannon adding machine \$200; 19" color TV, \$150. Call after 6 p.m. 261-7652.

• 121 FURNITURE FOR RENT

BED RENTALS AND SALES DAILY • WEEKLY MONTHLY RATES OPTION TO BUY PLAN ALL SIZE BEDS • CRIBS • WATERBEDS • DELIVERY ANYWHERE ON OAHU BED RENTALS, HAWAII 3632 WAIALAE AVE HONOLULU, HI. 735-2448

• 126 MISCELLANEOUS

MARY Kay Cosmetics. For Free Facial & reodor. Call Elizabeth 262-0463

VACUUM Cleaners reconditioned w/warranty, \$19.95 & up. Windward Vacuum Sales & Service. Call 239-8678.

HORSE Manure, \$5 for 60 lbs., call 261-9450.

MOVIE camera-Bell & Howell. Super 8, has many features, brand-new \$100/offer. Call 623-2950 after 5 p.m.

REFRIG. Brown, auto, ice maker; good cond., side by side. \$265. Ph. 254-1416

SAVAGE 3030 Rifle \$100. Seaduck dive vest, \$100. Ph. 259-5744

TEAK Chest of drawers, \$125; Western scenes oil paintings, \$100; Pioneer amp \$225; Elec turntable, \$90; ARA speakers, \$90; Wharfedale speakers \$125; Roll top desk, \$150; RCA console TV, 21" color, \$375; Portable dishwasher \$295; Antique marble top dresser & 2 nite stands, \$450; Leather chair, \$75; Braun slide projector, \$75; Projector screen, \$25; Bundy clarinet \$200; Honda guitar, \$25; Whirlpool freezer \$325; Tai Ping rug \$75. Call 262-9595 after 7 p.m., offers accepted. Hagglers welcome.

WASHER \$155; dryer \$110; hand mower \$19; Axal reel to reel tape recorder \$105/offer; dehumidifier \$60. 262-0324

8' ALUM. slid. glass door & window with screens: \$150/\$50; misc. 621-5526

24" SOLID State color console TV \$150; girls' 24" bicycle \$35; 2 swivel bar chairs \$40 ea.; Van bench seat \$20; tires/wheels \$10; golf clubs/bag \$35. 422-8694.

MISC. For sale: 2.5 cu. ft. refrig. \$175; IBM elec. typewriter \$150; desk \$75; Cannon adding machine \$200; 19" color TV, \$150. Call after 6 p.m. 261-7652.

• 121 FURNITURE FOR RENT

BED RENTALS AND SALES DAILY • WEEKLY MONTHLY RATES OPTION TO BUY PLAN ALL SIZE BEDS • CRIBS • WATERBEDS • DELIVERY ANYWHERE ON OAHU BED RENTALS, HAWAII 3632 WAIALAE AVE HONOLULU, HI. 735-2448

MISCELLANEOUS

SOFA & 3 chairs \$100; Zenith stereo \$25; Sears canopy top bdrm. set & desk \$100; 2 dressers \$20; 40 red hollow tile \$15; twin bed \$20; fish tank \$10; Hibachi pot \$20. King fur bedspread \$15. 261-3990 or 922-3784.

ROY'S LAWN MOWER REPAIR "Free Estimate" Lawn mowers for sale Rotary \$85. Reel \$125. Guaranteed 259-5927

MOVING Sale: 2-8' Sofas, excl. cond.; TV Antenna, never used; wooden dinette set w/4 chairs; girls' 3 spd. bike; large potted plants; Sears bug killer; stereo/radio; 2 chests of drawers, etc. 262-2000 after 6 p.m.

PATIO cover; couch; dinette set; rugs; lamps; child's bureau; Navy dress blue uniforms - med. Reasonable prices. Call 422-6549.

T-SHIRT SILK SCREENING Specializing: Small business, schools, clubs & teams. Small orders welcome. Fast delivery. Call John Wilcox 395-7439 or 395-1334

MOVING Sale: 2-8' Sofas, excl. cond.; TV Antenna, never used; wooden dinette set w/4 chairs; girls' 3 spd. bike; large potted plants; Sears bug killer; stereo/radio; 2 chests of drawers, etc. 262-2000 after 6 p.m.

PATIO cover; couch; dinette set; rugs; lamps; child's bureau; Navy dress blue uniforms - med. Reasonable prices. Call 422-6549.

T-SHIRT SILK SCREENING Specializing: Small business, schools, clubs & teams. Small orders welcome. Fast delivery. Call John Wilcox 395-7439 or 395-1334

MOVING Sale: 2-8' Sofas, excl. cond.; TV Antenna, never used; wooden dinette set w/4 chairs; girls' 3 spd. bike; large potted plants; Sears bug killer; stereo/radio; 2 chests of drawers, etc. 262-2000 after 6 p.m.

PATIO cover; couch; dinette set; rugs; lamps; child's bureau; Navy dress blue uniforms - med. Reasonable prices. Call 422-6549.

T-SHIRT SILK SCREENING Specializing: Small business, schools, clubs & teams. Small orders welcome. Fast delivery. Call John Wilcox 395-7439 or 395-1334

MISCELLANEOUS

SOFA & 3 chairs \$100; Zenith stereo \$25; Sears canopy top bdrm. set & desk \$100; 2 dressers \$20; 40 red hollow tile \$15; twin bed \$20; fish tank \$10; Hibachi pot \$20. King fur bedspread \$15. 261-3990 or 922-3784.

ROY'S LAWN MOWER REPAIR "Free Estimate" Lawn mowers for sale Rotary \$85. Reel \$125. Guaranteed 259-5927

MOVING Sale: 2-8' Sofas, excl. cond.; TV Antenna, never used; wooden dinette set w/4 chairs; girls' 3 spd. bike; large potted plants; Sears bug killer; stereo/radio; 2 chests of drawers, etc. 262-2000 after 6 p.m.

PATIO cover; couch; dinette set; rugs; lamps; child's bureau; Navy dress blue uniforms - med. Reasonable prices. Call 422-6549.

T-SHIRT SILK SCREENING Specializing: Small business, schools, clubs & teams. Small orders welcome. Fast delivery. Call John Wilcox 395-7439 or 395-1334

MOVING Sale: 2-8' Sofas, excl. cond.; TV Antenna, never used; wooden dinette set w/4 chairs; girls' 3 spd. bike; large potted plants; Sears bug killer; stereo/radio; 2 chests of drawers, etc. 262-2000 after 6 p.m.

PATIO cover; couch; dinette set; rugs; lamps; child's bureau; Navy dress blue uniforms - med. Reasonable prices. Call 422-6549.

T-SHIRT SILK SCREENING Specializing: Small business, schools, clubs & teams. Small orders welcome. Fast delivery. Call John Wilcox 395-7439 or 395-1334

MOVING Sale: 2-8' Sofas, excl. cond.; TV Antenna, never used; wooden dinette set w/4 chairs; girls' 3 spd. bike; large potted plants; Sears bug killer; stereo/radio; 2 chests of drawers, etc. 262-2000 after 6 p.m.

PATIO cover; couch; dinette set; rugs; lamps; child's bureau; Navy dress blue uniforms - med. Reasonable prices. Call 422-6549.

T-SHIRT SILK SCREENING Specializing: Small business, schools, clubs & teams. Small orders welcome. Fast delivery. Call John Wilcox 395-7439 or 395-1334

MISCELLANEOUS

SOFA & 3 chairs \$100; Zenith stereo \$25; Sears canopy top bdrm. set & desk \$100; 2 dressers \$20; 40 red hollow tile \$15; twin bed \$20; fish tank \$10; Hibachi pot \$20. King fur bedspread \$15. 261-3990 or 922-3784.

ROY'S LAWN MOWER REPAIR "Free Estimate" Lawn mowers for sale Rotary \$85. Reel \$125. Guaranteed 259-5927

MOVING Sale: 2-8' Sofas, excl. cond.; TV Antenna, never used; wooden dinette set w/4 chairs; girls' 3 spd. bike; large potted plants; Sears bug killer; stereo/radio; 2 chests of drawers, etc. 262-2000 after 6 p.m.

PATIO cover; couch; dinette set; rugs; lamps; child's bureau; Navy dress blue uniforms - med. Reasonable prices. Call 422-6549.

T-SHIRT SILK SCREENING Specializing: Small business, schools, clubs & teams. Small orders welcome. Fast delivery. Call John Wilcox 395-7439 or 395-1334

MOVING Sale: 2-8' Sofas, excl. cond.; TV Antenna, never used; wooden dinette set w/4 chairs; girls' 3 spd. bike; large potted plants; Sears bug killer; stereo/radio; 2 chests of drawers, etc. 262-2000 after 6 p.m.

PATIO cover; couch; dinette set; rugs; lamps; child's bureau; Navy dress blue uniforms - med. Reasonable prices. Call 422-6549.

T-SHIRT SILK SCREENING Specializing: Small business, schools, clubs & teams. Small orders welcome. Fast delivery. Call John Wilcox 395-7439 or 395-1334

MOVING Sale: 2-8' Sofas, excl. cond.; TV Antenna, never used; wooden dinette set w/4 chairs; girls' 3 spd. bike; large potted plants; Sears bug killer; stereo/radio; 2 chests of drawers, etc. 262-2000 after 6 p.m.

PATIO cover; couch; dinette set; rugs; lamps; child's bureau; Navy dress blue uniforms - med. Reasonable prices. Call 422-6549.

T-SHIRT SILK SCREENING Specializing: Small business, schools, clubs & teams. Small orders welcome. Fast delivery. Call John Wilcox 395-7439 or 395-1334

WE NEED AGENTS! OPEN HOUSE REALTY

Individualized Training
Top Commission Schedule

William Wade (RA)
262-0694 Res
254-5150 Day

Call us at our Control Data Bldg. Office 833-8883

MARGARET LOCKRIDGE, INC. SHOWN BY OWNER REAL ESTATE SERVICE 11 1/2 %

YOU SHOW WE TRANSACT YOU SAVE

Member of Honolulu Board of Realtors National Assoc. of Realtors

Our fee is 1 1/2% of the selling price. There is no initial charge for activating our service.

Are You Interested? Give Us A Call 262-5403 262-5307

629A Kailua Road Suite 109, Kailua Behind Kailua Hardware

SELLERS: Call For A Brochure
BUYERS: Inquire Into Our Numerous Listings

BUILDING OR REMODELING?

1st Prize Winner in 1980 Parade of Homes

AHUNA'S WINDWARD INTERIORS, INC.
Introducing Norman Balanga
General Contractor

Custom Remodeling Specialists

- Carpentry • Complete Interior Renovations
- Custom Cabinetry, Kitchens & Patios • Drywall Acoustical Tiles
- Sprayed Acoustical Ceilings • Customized Remodeling

CALL TODAY FOR YOUR FREE ESTIMATE

Ahuna's Windward Interior 235-6655 Ndrman Balanga 235-6657

UPHOLSTERY

Expert Custom Upholstery

David's Upholstery

FREE ESTIMATE

Pick-up & Delivery 455-7563 Formerly of Paradise Upholstery

David Rohner

HANDYMAN

handyman can fix anything!!

- Doors • Windows • Screens
- Electric • Plumbing • Woodwork

Also Slabs, Remodeling & Fencing No Job Too Small

Call Ron - 261-3601

LUMBER

Beautify your home with one of these exotic woods.

Alamosa	Eucalyptus	Poplar	Plywood
Anglo	Hickory	Purpleheart	Particle Board
Ash	Iroko	Rosewood	Marine Plywood
Balsa	Jelutong	Sapele	Birch
Birch	Koa Mahogany	Shedua	Fir
Bubinga	Maple	Spruce	Koa
Cedar	Oak	Vermillion	Mahogany
Cherry	Obecohe	Walnut	Oak
Damar	Pau Ferro	Wenge	Rosewood
	Pine	Willow	Teak
		Zebrawood	Walnut

HARDWOOD L

126 MISCELLANEOUS

REFRIGERATOR Self-defrosting \$125. Kenmore gas dryer \$75. Call 262-8886.

45 PIECE Fine china set. Blue Willow Oriental dishes & dolls, vases, ceramic pieces, depression glass. Ph. 839-2959.

CARPET, brown/ahag, 12x20, 3mo. old, \$150; rust sofa, 3mo. old, \$200; brown recliner, 3mo. old, \$150; elect. typewriter, exc. cond., \$100; dining set, \$200; stereo, \$100; weights, \$40; dresser, 200"; \$75; washer, \$75; 10-gal. aquarium w/stand & acces. \$50. 254-4790, after 4 p.m.

DBL bed sofa bed, very good, \$100. Ph. 235-8940.

RENT Your backyard, need family w/fenced yard to keep my dog. Call 235-5680.

WASHER & dryer & rugs. Make offer. Call 262-9191 or 261-9705.

SCHILLER-APOLAN
Specialties Manufacturers for
We're happy to serve you!
"BUTTONS" "BADGES" Quick Service
239-7155

200 LBS. weight set \$60/off. Call 395-9091.

LINGERIE Parties! New concept in home party plans. Be a hostess, invite your friends over, you receive gift of lingerie. Our fashion line has something for all sizes. Petite-3X. 944-3994 The Lingerie Shop.

ICE Cuber for sale - Manitowoc - h 54-w 30-L34X \$800. Call 261-1443.

ANSUL QRX-5500 220W Amplifier, Akai GRC-750 Cassette deck with continuous mode B1-Directional record, Pioneer SF-2 turntable, two Ansul SF-2 63W Omni-Directional and two SP-1700 70W Speakers complete system \$700 all excellent condition 623-2197 after 5 p.m.

HOW TO LOSE WEIGHT & KEEP LAUGHING! Discover the proven weight loss plan that has helped thousands lose those extra pounds. Call 735-6054.

MANIKANS (2) good condition w/extras, \$50 ea. Rattan & flesh tone body manikans \$15 ea., other display items plastic hangers, etc. Call 261-0789 or 262-5980.

FREE SAMPLES 395-7135
Cut your food bill in half. Herbalife Slim & Trim, 100% guaranteed. A new natural food for longevity. Helps lose weight, detoxifies the body, aids anxiety, cellulite & FAT.

WHIRLPOOL Freezer, runs great, \$225; Ping-Pong table, \$35. Ph. 235-4435.

79 PUCH MK 11, moped, mint condition, \$500. Call 254-4246.

3-1100 BTU Air conditioners, \$250 ea. all good working cond., 7-4 tube ceiling fans \$30 ea. All in good working cond., Ph. 531-2048 9:30-12 noon weekdays.

WASHER, dryer, Lawnboy mower \$100 ea. Ph. 395-4180.

GRANDFATHER CLOCK, blackwood case, Westminster chime. Best offer, 422-5504.

SURFLINE, Excellent condition, \$150/off. Call Ross after 3 p.m. 247-1043.

HEAVY Duty washer & dryer, \$50 ea. Ph. 254-4753.

QUEEN size hide-a-bed, toddler car seat, twin bed, sawyer rocker & ottoman. Call 422-2182.

For Sale Artist II Flute w/case \$150. Ph. 839-4412.

LAWN mowers - rotary \$65, reel \$125; Guaranteed. Call 539-5287.

S CASH S
We pay much more for your items jewelry gold silver, pearls, radios, stereos, things of value. 1139 9th Avenue 732-6586. Open 4 days.

131 WIKI WIKI FREE BEE

FREE Poi puppies, 8 weeks old; all male. Cute, playful & fuzzy. To good home. Ph. 259-9483.

FREE: 6 months old puppy, Poi, female. Inquire 455-8863.

FREE 1/2 Setter, 1/2 Lab, 2 yr. male, handsome, 2 yr. old, housedog/jogger. 239-5588.

FREE adorable Puppy male, 3 months, white & tan. First shots, housebroken to good home. 262-2478.

FREE 1 yr. old cat to good home. Ph. 422-2182.

FREE: kittens to good homes. 623-1118.

FREE 2 female tortoise shell cats, good roach & rat catchers. Call Jean 239-7972 winds & eves.

FREE: Cat, calico tiger, 6 months old, female, shots. Call 261-2990.

FREE: Plants & trees to non-profit organizations. You dig in Hawaii Kai. 395-5580.

FREE 7 week old kittens, 2 black & white, all black. 422-2474.

FREE to good home part Shepherd part Lab 2 1/2 yrs. old. Good w/children. Moving 261-0876 eves. 262-8634.

FREE: Part Dachshund, male, good with kids. Ph. 422-2513 after 5 p.m.

FREE to good home: Seal-point Siamese, kittens. Drk chocolate, markings, 2 males only. Litter trained, good house cats. Call Patty @ wrk. 247-1752.

FREE to good home, calico cat, 1 yr. old. Ph. 254-2589.

FREE Wood from old outside staircase. Ph. 261-9255.

FREE: Persian cat, calico female, registered. Call 261-2123.

FREE to good homes, kittens, 4 months old, 3 males, 1 female. Call 947-2354.

FREE: 4 beautiful fluffy kittens, all litter trained. Call 833-6971.

FREE puppies, part Dachshund/terrier, 5 weeks old, 3 males, 4 females. Ph. 422-6750.

FREE part Terrier, male, 2 yrs. old, good with kids. Ph. 499-1121 after 5 p.m.

136 MISCELLANEOUS WANTED

CASH for Lawn Mowers & Outdoor Motors. Any Condition. Ph. 259-5927.

WE BUY used furniture & beds. Call 623-7074.

WANTED: Unserviceable washers, Maytag, G.E., Whirlpool & Kenmore. Call 621-9003.

WE Buy Used Furniture & Beds. Call 623-7074.

WANTED: Unserviceable RCA Zenith & Motorola Quasar, Color TVs. 623-2326.

144 MUSICAL SALES & SERVICE

HAMMOND Spinnet organ. Excellent condition. 261-6426 eves. Must sell.

QUARTERMASTER seeking group employment. Highly diverse. Avail. immed. 262-0319 anytime.

EXPER. Piano hauling ins. S&S Del. Lic-124C. Ph. 833-1859 or 254-4142.

ISLAND Star Music Studios. Pearl City location. Call 732-5496.

USED BAND INSTRUMENTS SAVE 40%
Hurry, while they last. YAMAHA Music Center. Kapiolani-Pike. 524-5675.

146 BOAT SUPPLIES & SERVICE

22' 79 SEARAY Nightlight bought new 80 Economical 200 HP Volvo, only 85 hrs. exc. cond., many extras EZ trailer, \$15,400. 499-1448.

16' SKI Boat, 50 Merc. trailer, ski bar, great shape, \$2650. 261-4087, 942-9677.

11' INFLATABLE rubber boat w/7.5hp J.C. Panmy motor, extras like new \$995. Call 239-6005 after 10 a.m.

23' AMERICAN Eagle sloop sailboat, sleeps 5, extras, \$9000. 422-4756.

14' WELLCRAFT boat, Evinrude motor, & trailer. Good cond., \$2300 or offer. Call 261-2830.

19' REINELL 165 OMC, easy load trailer, exc. cond extras optional \$6200. Call 455-9390 after 5 p.m.

21' KAUAI Sampan w/trailer, 100 h.p., diesel, \$7000, or offer. Daily after 6 p.m. & weekends 293-5806.

25' CHRIS-CRAFT, fully equipped for fishing and pleasure, \$20,000. 689-8091.

151 PET SUPPLIES & SERVICE

ANIMAL SITTING in your home by a responsible and caring person. Kailua area. 262-6974.

PIT Bull mix puppies 6 wks. old, \$25. Ph. 261-8076 after 4 p.m.

AKC Golden Retriever female pup, 3 weeks, shots \$250. Call 261-8515.

LOVE BIRDS, Peaced, faced, matched pair, breeding box & cage, \$65 w/cage, \$50 w/o cage. 499-2891.

AKC Cocker, champagne, female, 1 1/2 years old. Call 254-2524 after 7 p.m.

PIED Cockatiels for sale. 4 months old. Ph. 254-1697.

FEMALE Boxer, 10 months old. Brindle w/papers \$200. Call 239-7308.

AMERICAN Staffordshire Terrier pups, 3 months old. Call Dave 239-9120.

156 AUTO PARTS & SERVICE

70 HONDA, 350, for parts. New spark plugs, points, & air filters. Cycle sold as whole unit take it away for only \$320. Call 235-3138.

75 HONDA CB200, elec. start, new tires, shocks, seat cover \$475. 422-8184.

171 MOTORCYCLE SALES & SERVICE

4 ARMSTRONG Tri-tracks 11-15 new \$250, rebuilt 302 Ford motor complete \$200. Call Steve 836-4823.

70 AUDI 100LS gd cond. runs great, 30 mi/gal \$1400/off. 487-8372, Rick.

64 BUICK Skylark, convertible, parts, new motor, trans, and radiator \$150. Ph. 261-4511 or 261-3184.

161 AUTOS WANTED

WANTED: Car or truck running or not. Will pay up to \$500. Ph. 396-8182.

WANTED VW BUGS GOOD, BAD & THE UGLY. Any condition. IMMEDIATE CASH top \$5. Immediate cash OLD PLATES OKAY. Call 538-1136, 734-2834.

166 PICKUPS, TRUCKS

79 DATSUN pickup truck 5 speed, mags, AM/FM cassette \$4800. 624-5551.

78 DATSUN Pick up truck, mechanically perfect, \$2400. Ph. 239-9342.

79 GMC Classic, 4 x 4, half ton pickup truck, AM/FM cassette radio & air, \$10,000. Ph. 293-9448.

175 VANS, CAMPERS & JEPS

71 VW Van, fair condition, 22 mpg, \$1200. Call 499-3035.

JEEP TO CJ5, V6, rollover, new top, needs work \$2500 offer. 235-5191, 682-4220.

77 DODGE Street Van, good cond., \$3,250. Ph. 254-4654.

78 DODGE Van, low mileage, exc. cond. auto, customized, \$4500.

68 VW Van, runs good, for parts, \$495. Call 261-8774.

BANK REPOSSESSION

77 DODGE Working Van with many extras (1980TCE) \$270 cash down pmt. - tax & lic. OAC. Repossession price \$3882.01. See repossession mgr.

WHOLESALE MOTORS
Ph. 836-1222 2999 N. Nimitz Hwy.

176 AUTOS FOR SALE

'65 CORVAIR, Turbo, many extras. Call 537-5682 or 236-2757.

146 BOAT SUPPLIES & SERVICE

22' 79 SEARAY Nightlight bought new 80 Economical 200 HP Volvo, only 85 hrs. exc. cond., many extras EZ trailer, \$15,400. 499-1448.

16' SKI Boat, 50 Merc. trailer, ski bar, great shape, \$2650. 261-4087, 942-9677.

11' INFLATABLE rubber boat w/7.5hp J.C. Panmy motor, extras like new \$995. Call 239-6005 after 10 a.m.

23' AMERICAN Eagle sloop sailboat, sleeps 5, extras, \$9000. 422-4756.

14' WELLCRAFT boat, Evinrude motor, & trailer. Good cond., \$2300 or offer. Call 261-2830.

19' REINELL 165 OMC, easy load trailer, exc. cond extras optional \$6200. Call 455-9390 after 5 p.m.

21' KAUAI Sampan w/trailer, 100 h.p., diesel, \$7000, or offer. Daily after 6 p.m. & weekends 293-5806.

25' CHRIS-CRAFT, fully equipped for fishing and pleasure, \$20,000. 689-8091.

151 PET SUPPLIES & SERVICE

ANIMAL SITTING in your home by a responsible and caring person. Kailua area. 262-6974.

PIT Bull mix puppies 6 wks. old, \$25. Ph. 261-8076 after 4 p.m.

AKC Golden Retriever female pup, 3 weeks, shots \$250. Call 261-8515.

LOVE BIRDS, Peaced, faced, matched pair, breeding box & cage, \$65 w/cage, \$50 w/o cage. 499-2891.

AKC Cocker, champagne, female, 1 1/2 years old. Call 254-2524 after 7 p.m.

PIED Cockatiels for sale. 4 months old. Ph. 254-1697.

FEMALE Boxer, 10 months old. Brindle w/papers \$200. Call 239-7308.

AMERICAN Staffordshire Terrier pups, 3 months old. Call Dave 239-9120.

156 AUTO PARTS & SERVICE

70 HONDA, 350, for parts. New spark plugs, points, & air filters. Cycle sold as whole unit take it away for only \$320. Call 235-3138.

75 HONDA CB200, elec. start, new tires, shocks, seat cover \$475. 422-8184.

171 MOTORCYCLE SALES & SERVICE

4 ARMSTRONG Tri-tracks 11-15 new \$250, rebuilt 302 Ford motor complete \$200. Call Steve 836-4823.

70 AUDI 100LS gd cond. runs great, 30 mi/gal \$1400/off. 487-8372, Rick.

64 BUICK Skylark, convertible, parts, new motor, trans, and radiator \$150. Ph. 261-4511 or 261-3184.

161 AUTOS WANTED

WANTED: Car or truck running or not. Will pay up to \$500. Ph. 396-8182.

WANTED VW BUGS GOOD, BAD & THE UGLY. Any condition. IMMEDIATE CASH top \$5. Immediate cash OLD PLATES OKAY. Call 538-1136, 734-2834.

166 PICKUPS, TRUCKS

79 DATSUN pickup truck 5 speed, mags, AM/FM cassette \$4800. 624-5551.

78 DATSUN Pick up truck, mechanically perfect, \$2400. Ph. 239-9342.

79 GMC Classic, 4 x 4, half ton pickup truck, AM/FM cassette radio & air, \$10,000. Ph. 293-9448.

175 VANS, CAMPERS & JEPS

71 VW Van, fair condition, 22 mpg, \$1200. Call 499-3035.

JEEP TO CJ5, V6, rollover, new top, needs work \$2500 offer. 235-5191, 682-4220.

77 DODGE Street Van, good cond., \$3,250. Ph. 254-4654.

78 DODGE Van, low mileage, exc. cond. auto, customized, \$4500.

68 VW Van, runs good, for parts, \$495. Call 261-8774.

BANK REPOSSESSION

77 DODGE Working Van with many extras (1980TCE) \$270 cash down pmt. - tax & lic. OAC. Repossession price \$3882.01. See repossession mgr.

WHOLESALE MOTORS
Ph. 836-1222 2999 N. Nimitz Hwy.

176 AUTOS FOR SALE

'65 CORVAIR, Turbo, many extras. Call 537-5682 or 236-2757.

STOP

When you need a mechanic call
KAILUA TOYOTA SERVICE
Ask for Bob
261-0878

PERFORMANCE GOODIES

A complete line of performance products are now in stock for your custom. Baja Bug or Sandrail. We carry Bugpack products from chromeflange covers and exhaust systems to competition ramps and valve assemblies.

Polished Aluminum Cylinder Shroud Tins \$80.95 per set
New Front Axle Beams For 1988 and Later Range \$69.95

Available - Dual Solex Carburetor Kits (Single or Dual Port) \$235.00 per set
VW Front Windshield For 87 and Later Range \$35.95

HAMAKUA AUTO PARTS
STORE HOURS: M-F, 8-5; Sat., 9-3
171C Hamakua Dr., Kailua 262-6526

UNBEATABLE!!

72 PONTIAC LEMANS Stk. 5620 \$599	75 VW SUPER BUG Mag wheels, wide tires. Stk. 5615 \$3375	77 CHRYSLER CORDOBA Fully loaded Stk. 5400 \$3375
79 PINTO Stk. 5400 \$3375	77 JEEP CHEROKEE WAGON 4x4 \$1000 below retail \$2995	78 FORD MUSTANG MACH I \$3995

79 CAMARO
4 sp. Cam headers.
Stk. 5618
\$1875

SPECIALIZING IN 100% FINANCING FOR MILITARY UPON APPROVED CREDIT.

79 TOYOTA PICKUP TRUCK
SR 5 Longbed camper
\$5895

AUDI

78 AUDI Fox, 4 dr., a/c, auto, FM/stereo, sunroof, new tires, looks like new \$4950. 487-5817 487-6066. Best offer.

76 AUDI 100LS, air, auto, AM/FM radio, exc. cond. 25 mpg. \$2450. 239-8317.

CADILLAC

80 CADILLAC Fleetwood Brougham d'Elegance. Call 254-1098.

'79 SEVILLE
Luxurious eqpt. immac. (BEF951)
\$12,775
WHOLESALE MOTORS
Ph. 836-1222 2999 N. Nimitz Hwy.

CHEVROLET

68 CHEVY Nova, runs good, looks good, make offer. Call 239-7871.

75 MONTE Carlo Landau p/s p/b. AM/FM cruise control. Must sell \$1000. Call 257-2943 ask for T. Cheruek.

75 MALIBU CLASSIC, auto, a/c, bucket seat BFC007 \$1995
SHELLY MAZDA-WAIPAHU 877-0709
We Also Buy Cars

'78 CAMARO
Super clean.
Many extras. (BDC259)
\$3775
WHOLESALE MOTORS
2999 N. Nimitz Hwy. 836-1222

DESPERATE
Need clean small car. Will pay over top \$\$\$
WHOLESALE MOTORS
2999 Nimitz Hwy. 836-1222

BANK REPOSSESSION

77 DODGE Working Van with many extras (1980TCE) \$270 cash down pmt. - tax & lic. OAC. Repossession price \$3882.01. See repossession mgr.

WHOLESALE MOTORS
Ph. 836-1222 2999 N. Nimitz Hwy.

176 AUTOS FOR SALE

'65 CORVAIR, Turbo, many extras. Call 537-5682 or 236-2757.

SALE!

TIRE

SALE!

SAVE UP TO 40%

Prices Firm Until Sept. 30, 1981 (Please Read Notes)

MICHELIN X PREMIUM STEEL RADIALS (-40%)
Whitewalls

Tire Size	Our Price	Our Sale Price**
165 75-13	92.50	45.50
175 75-13	100.25	50.25
185 75-13	110.50	56.25
197 75-14	118.00	60.75
205 75-14	125.00	65.00

MICHELIN XZ PREMIUM STEEL RADIALS (-30%)
Alpha Whitewalls

Tire Size	Our Price	Our Sale Price**
165 75-13	108.00	65.40
175 75-13	110.50	67.25
185 75-13	120.75	68.75
197 75-14	130.25	81.25
205 75-14	138.00	86.50
215 75-15	151.25	82.00
225 75-15	156.50	85.50

MICHELIN XZ PREMIUM STEEL RADIALS (-20%)
Blackwalls

Tire Size	Our Price	Our Sale Price**
145-10	52.25	31.75
155-12	66.25	43.00
165-13	61.25	39.00
175-13	69.75	45.75
185-13	78.25	52.50
195-14	74.00	49.25
205-14	131.25	82.00
215-15	136.50	88.50
225-15	162.25	103.50

MICHELIN XZ PREMIUM STEEL RADIALS (-30%)
Metric Whitewalls (Close-out Prices)

Tire Size	Our Price	Our Sale Price**
165 75-13	112.50	68.75
195 75-14	118.00	72.50
205 75-14	120.75	74.50
215 75-15	130.25	81.25
225 75-15	151.25	82.00

MICHELIN XZ PREMIUM STEEL RADIALS (-20%)
Blackwalls

Tire Size	Our Price	Our Sale Price**
145-10	52.25	31.75
155-12	66.25	43.00
165-13	61.25	39.00
175-13	69.75	45.75
185-13	78.25	52.50
195-14	74.00	49.25
205-14	131.25	82.00
215-15	136.50	88.50
225-15	162.25	103.50

MICHELIN XZ PREMIUM STEEL RADIALS (-30%)
Whitewalls

Tire Size	Our Price	Our Sale Price**
165 75-13	84.25	57.50
195 75-13	93.25	64.50
185 75-14	101.00	70.75

Other sizes also available.

10 GOOD REASONS
why your boy or girl should have a newspaper route

- To earn money.
- To learn self-reliance.
- To learn to keep records, and to apply in a practical way math taught in the classroom.
- To learn to handle money and appreciate its value.
- To learn to be on time and how to ration time.
- To learn courtesy and how to get along with people.
- To learn marketing principles and salesmanship.
- To experience the principles of the "free enterprise" system.
- To be operating "a business" of their own.
- To become sharper, brighter, more mature.

For information on newspaper route management for your son or daughter, phone or visit our Circulation Department. They will be pleased to give you full details on available routes.

The SUN PRESS Newspapers

Windward Sun Press
Maui Sun Press
Maui News News

Central-Military Sun Press
Hawaii Sun Press
Pearl City-Aleia Sun Press

Waipahu Sun Press
Kailua Sun Press
Kaimuki-Kahala Sun Press

235-5801

SALE!

TIRE

SALE!

SAVE UP TO 40%

Prices Firm Until Sept. 30, 1981 (Please Read Notes)

MICHELIN X PREMIUM STEEL RADIALS (-40%)
Whitewalls

Tire Size	Our Price	Our Sale Price**
165 75-13	92.50	45.50
175 75-13	100.25	50.25
185 75-13	110.50	56.25
197 75-14	118.00	60.75
205 75-14	125.00	65.00

MICHELIN XZ PREMIUM STEEL RADIALS (-30%)
Alpha Whitewalls

Tire Size	Our Price	Our Sale Price**
165 75-13	108.00	65.40
175 75-13	110.50	67.25
185 75-13	120.75	68.75
197 75-14	130.25	81.25
205 75-14	138.00	86.50
215 75-15	151.25	82.00
225 75-15	156.50	85.50

MICHELIN XZ PREMIUM STEEL RADIALS (-20%)
Blackwalls

Tire Size	Our Price	Our Sale Price**
145-10	52.25	31.75
155-12	66.25	43.00
165-13	61.25	39.00
175-13	69.75	45.75
185-13	78.25	52.50
195-14	74.00	49.25
205-14	131.25	82.00
215-15	136.50	88.50
225-15	162.25	103.50

MICHELIN XZ PREMIUM STEEL RADIALS (-30%)
Metric Whitewalls (Close-out Prices)

Tire Size	Our Price	Our Sale Price**
165 75-13	112.50	68.75
195 75-14	118.00	72.50
205 75-14	120.75	74.50
215 75-15	130.25	81.25
225 75-15	151.25	82.00

MICHELIN XZ PREMIUM STEEL RADIALS (-20%)
Blackwalls

Tire Size	Our Price	Our Sale Price**
145-10	52.25	31.75
155-12	66.25	43.00
165-13	61.25	39.00
175-13	69.75	45.75
185-13	78.25	52.50
195-14	74.00	49.25
205-14	131.25	82.00
215-15	136.50	88.50
225-15	162.25	103.50

MICHELIN XZ PREMIUM STEEL RADIALS (-30%)
Whitewalls

Tire Size	Our Price	Our Sale Price**
165 75-13	84.25	57.50
195 75-13	93.25	64.50
185 75-14	101.00	70.75

Other sizes also available.

FREE LUBE
with coupon!!

No gimmicks — just bring in your bike with this coupon and while you're here, why not check out these specials?

★ Tune up for Harley Davidsons (plus parts)
Reg. \$121.60 SALE \$59.95

★ Tune up for any Kawasaki or other Japanese bike (plus parts)
Reg. \$80.00 SALE \$47.95

Expires 9/19/81

We are the new factory authorized Harley Davidson and Kawasaki dealers.

SALES SERVICE & PARTS
WAIPAHU OPEN 7 DAYS 671-6711

great cars! great deals!

'70 TOYOTA CORONA
4 dr., 4 cyl., auto. ANB238 \$595

'75 CHEV. VEGA
Coupe, 4 cyl., auto., p/s. AFA992 \$595

'72 GRAN TORINO
2 dr., V8, auto., p/s, p/b. BJX088 \$695

'71 DATSUN P/U TRUCK
4 cyl., 4 spd., BGU919 \$895

'74 CHEV. MALIBU

DATSUN

'78 DATSUN B210, 2 dr., 4 spd., 22,000 mi., excl. cond. \$2250 or offer. Call 836-4055 or 262-0890

DODGE

'69 DODGE, Slant 6 \$350. Ph. 235-8863 eves.

'77 DODGE Aspen 4 dr., \$1500. Call 422-4186 or 471-9039 ask for D.E. Carr

'87 DODGE Dart, 4 dr., runs well, \$2000/offer. 239-8005/239-7321

FIAT

'79 FIAT Strada, air, luxury package, cloth seats, high mpg., perfect cond. inside & out. runs great. 531-0254 or 239-6341

'79 124 4 seater convertible, 5 spd., AM/FM tape stereo, power windows, mag. luggage carrier, sharp (AT1043)

\$6275
WHOLESALE MOTORS
2999 Nimitz Hwy. 836-1222

FORD

'73 FORD Pinto, good running cond., new tires/brakes, \$800. Call John 946-1611 or 395-9677 eves.

'69 FORD 4 dr. sta. wgn., p/s, p/b, a/c, radio, good tires-excl. motor, transmission, rear end, 67,000 mi. 261-2571

'73 PINTO Runabout \$300 needs work. 682-5365 after 4 p.m.

'67 MUSTANG fully loaded; excl. cond., \$1100/offer. Call 499-2233

'72 FORD LTD. Station wagon, new front tires, & battery \$900. 622-5614

'80 PINTO, 4 spd., 12,000 miles, stereo \$3300 must sell Jim 257-2048

'75 FORD Granada, V8, auto., w/sr, \$800/best offer. Ph. 259-7486

'79 3 dr., MUSTANG, good condition, \$400. Ph. 239-5526

'72 PINTO, excl. mechanical condition, \$700. Ph. 262-5617

'78 FUTURA
2 dr., 5 cyl., auto. steering, air, AM/FM tape stereo, clean, (ACPS63)
\$3275
WHOLESALE MOTORS
Ph. 836-1222 2999 N. Nimitz Hwy.

FORD

'72 PINTO, red, auto., radio, \$500. Ph. 946-9746, 537-5414

HONDA

'76 HONDA Accord, 5 spd., Michelin tires, \$3200. Ph. 261-1111

JAGUAR

ABSOLUTELY BEAUTIFUL
'74 XJ6 (SEM QUALITY) 4 dr., well maintained with only 10,200 mi. Luxuriously eqpt., immac. (J9W942)
\$9975.
WHOLESALE MOTORS
2999 N. Nimitz Hwy. 836-1222

LINCOLN

'79 TOWN CAR 4 dr. black/black, full power, split power, leather seats, 10 wheel mag. rims, AM/FM tape stereo, immac. (P2157)
\$8775
WHOLESALE MOTORS
2999 N. Nimitz Hwy. 836-1222

MAZDA

'79 GLC 3 dr., auto., great little car (AXN506)
\$3175
WHOLESALE MOTORS
2999 N. Nimitz Hwy. 836-1222

'73 RX3 4 dr., auto., AFV371 \$1189
SHELLY MAZDA WAIPAHU Next to Sunset Drive-in 877-0709
We Also Buy Cars

BANK REPOSESSION
'80 GLC 3 dr. sport 5 spd., sharp (J14252) \$375 cash down pmt. tax & lic. OAC. Repossession price \$4480.15. See repossession mgr.
WHOLESALE MOTORS
Ph. 836-1222 2999 N. Nimitz Hwy.

MERCURY

'78 CAPRI RS TURBO, stick shift, sunroof, p/s, AM-FM in dash cassette, low mi., excl. cond. \$4000. Days 524-6560 Eves. & wknds. 521-2137.

'73 COUGAR Mercury. Runs very well. \$1000/ Best offer. Ph. 261-7829

'64 MERC., Caliente, mags 4 spd., runs good, no rust \$495. Call 261-8774

MAZDA

'78 MAZDA 3 dr. hatchback, 4 spd., BVD952 \$2588
SHELLY MAZDA WAIPAHU 877-0709
We Also Buy Cars

'80 GLC 3 dr. hatchback, 4 spd., BVD979 \$4188
SHELLY MAZDA WAIPAHU 877-0709
We Also Buy Cars

'80 MGB, last year made, 12,000 miles, blue, AM/FM stereo cassette, rustproofed, excl. cond. \$7200. 624-5380

OLDSMOBILE

'69 CUTLASS sta. wagon V8, 350 eng., a/t, p/s, p/b good runner, \$725/best offer. 422-2397 after 7

'77 CUTLASS Supreme
2 dr., super clean. Loaded. (BCV424)
\$3775
WHOLESALE MOTORS
Ph. 836-1222 2999 N. Nimitz Hwy.

PONTIAC

'72 PONTIAC Grandville, 2 dr. htdp., \$500. '71 Lincoln Mark III, 32,000 miles, \$2500. '72 Cadillac Limousine \$1000. AWH 254-2112.

'79 FIREBIRD
Esprit, white/white, all power, AM/FM tape, auto., air, 10 wheel, custom wheels, low mi., immac. (AP8822) \$4975
WHOLESALE MOTORS
Ph. 836-1222 2999 N. Nimitz Hwy.

MG

'78 MG Midget, excl. cond., tonneau cover \$3300. 547-5766 days. 734-3577 eves.

PONTIAC

'80 MARON Trans Am, 11,500 miles, 4.9 V8, full power w/sr, AM/FM stereo cassette, 836-5990

'71 LE MANS, 2 dr. htdp., air, p/w, tape deck, low mi., registered thru Sept. '82 \$800. Ph. 254-2711

PORSCHE

'68 PORSCHE 911, excl. cond., \$5000. 262-9212

RENAULT

\$100 for '70 R16 Renault, good for parts, etc. Ph. 395-3618

SUBARU

'80 SUBARU \$4800. '76 CHEVY Luv \$1800/offer. Call 955-7590

TOYOTA

'75 TOYOTA Corolla, 2 dr., auto., good cond., \$700/best offer. Ph. 261-0769 or 262-5980.

'74 TOYOTA Corolla, \$800 or best offer. Ph. 254-5445.

'77 TOYOTA Corolla, 2 dr., new tires, 40 MPG, Call 456-9532 after 4 p.m.

'74 TOYOTA Corona, 2 dr., auto., \$500/offer. Call 247-4446.

'73 TOYOTA Mark II sta. wgn. New eng., good body cond. \$975. Ph. 621-5162.

CLEARANCE

'73 PONTIAC LUXURY LeMans 2 dr. htdp. V8, auto., air, clean (B01077) Was \$1900 NOW \$1295

'73 DODGE BART 4 dr. V8, auto., air, nice (B06048) Was \$1800 NOW \$1195

'77 HONDA CIVIC 4 dr. 4 spd., new paint (B0V13) Was \$2800 NOW \$2595

'77 CHEV NOVA 4 dr. 6 cyl., auto., new paint (B0M577) Was \$2100 NOW \$2895

'73 CHEV IMPALA 4 dr. 6 cyl., auto., air, power windows, V8, auto., air, plus extras (B03067) Was \$4800 NOW \$3795

'78 DODGE WAGON XE 2 dr. htdp. V8, auto., air (B07705) Was \$4700 NOW \$2895

'79 CHEVETTE 4 dr., auto., 1000 new (B0C105) Was \$2800 NOW \$2995

'79 FORD LTD 2 dr. htdp. V8, auto., air, like new (A1701) Was \$4800 NOW \$3995

'79 CHEV BUICK Hatchback sp. V8, 4 spd., air (B0E327) Was \$4800 NOW \$3795

'79 DODGE COLT custom hatchback sp., 4 spd., air, nice (B0E327) Was \$4800 NOW \$4595

'79 MERCURY COUGAR XLT V8, auto., air, loaded, 18,000 mi. (B08070) Was \$5400 NOW \$5495

'81 HONDA STATION Wagon, 5 spd., red/rust. like new (B0F048) Special at \$5995

TONY HONDA USED CARS
84-228 Farrington 671-5867

TOYOTA

'70 TOYOTA Corolla, 4 dr., very good cond., \$650. '70 TOYOTA Corona, some rust but good running \$500. 239-7189

TRIUMPH

'77 TRIUMPH Spitfire, blue, dependable, low mi., \$3,000/offer. 261-2910.

'77 TRIUMPH Spitfire, excl. cond., low mileage \$4000/offer. Ph. 537-1876

VOLKSWAGEN

'74 VW, new paint, radials, very clean. Call 499-2858 or 474-7238.

'71 SQUAREBACK, auto-matic, good condition \$1150. Call 262-7318

'77 SCIROCCO, 4 spd., excl. cond., new paint \$4250. Call Chip 732-7655

'75 RABBIT
2 dr., 4 spd., low mi. BPT425 \$2388
SHELLY MAZDA WAIPAHU 877-0709
We Also Buy Cars

'71 VW Bug, good cond., \$1350/offer. Ph. 235-4732

'78 VOLKSWAGEN Rabbit sunroof, good condition asking \$3400. Call 623-4109 after 4 p.m.

'78 RABBIT
immac. 2 dr., 4 spd., sunroof (AR6244)
\$3975
WHOLESALE MOTORS
836-1222 2999 N. Nimitz Hwy.

WANTED VW BUGS
GOOD, BAD & THE UGLY
Any condition IMMEDIATE CASH top \$\$. Immediate cash OLD PLATES OKAY call 538-1136, 734-2834

BEST DEALS IN WAHIAWA AT SERVICE MOTORS

'78 MAZDA RX7 5 spd., air cond., AM/FM cassette. (BCC103) **\$7395**

'77 DATSUN B210 4 dr., auto. (BPN015) **\$1595**

'76 DATSUN B210 Coupe, auto. (IAG-881) **\$2495**

'75 FIAT 5/W 4 dr. (IMLX926) **\$995**

'78 HONDA ACCORD 3 dr., 5 spd. (BCC079) **\$4495**

'78 MAZDA GLC 4 dr. auto. (B8E025) **\$2595**

'75 VW BUG 4 dr. auto. (BNA026) **\$2895**

'78 TOYOTA MARK II WAGON, auto, power steering, air. (BPN061) **\$2995**

'79 COROLLA 4 dr. auto. (HCC278) **\$3745**

'75 OLDS OMEGA 2 dr., auto. (BNC-029) **\$1995**

'78 PLYMOUTH VOLARE 4 dr., 6 cyl., auto, power steering, air. (ANJ101) **\$2595**

'80 FORD GRANADA 4 dr., 6 cyl., auto, power steering, air. (B8P458) **\$5495**

SALE GOOD THRU SEPT. 23-27 SERVICE MOTORS
in the heart of Wahiawa
622-4195
OPEN SUNDAY
(A Division of Service Pacific, Inc.)

100% FINANCING OAC
250 Additional Cars on Display

'78 FIAT
SUPER BRAVA 5 spd., 4 cyl. mags. 100% financing available on this auto. Prices only through Sunday. (AJC506) **\$2995**

'77 CUTLASS
SUPREME htdp., black on black beauty. Auto, power steering, factory air cond., coded wheels. Cheapest in town (BNC043) **\$2995**

'76 MUSTANG
Htdp., V8, 4 spd., air cond., low mi., fantastic in & out. A very reliable 2nd car. See today! (AJX813) **\$2995**

'80 RABBIT
Diesel, 4 dr., low mi., factory air cond., deluxe model. Ass't. Sales Mgr.'s personal choice. The car of the future. Must sell by weekend. (ANY259) **\$5995**

'75 MONTE CARLO
Htdp., V8, auto., power steering, recent trans overhaul. 1 fire engine red. Price ridiculously for limited sale. (ANW328) **\$1495**

'81 MAZDA
626 Htdp., 5 spd., tinted windows, 1 owner, low mi., 4 cyl., like green in color. Be first this weekend. Only 1 avail. (AJB276) **\$6995**

'79 MAZDA
RX7 GS 5 spd., sunroof, AM/FM stereo, canary yellow with mags. a remarkable price. (BLD158) **\$6795**

'79 TOYOTA
LANDCRUISER 4x4, softop, mags, 4 spd., roll bar. Outside island special. Financing avail. Call Lou (MEH879) **\$5995**

BAY CHEVROLET INC.
USED CAR SPECIAL

1980 Monte Carlo



V6 Turbo - air cond - automatic - landau power windows - power brakes - tilt s/whl - tinted glass - radio. #1735A.

\$8595⁰⁰

Includes 80 Thousand Miles/80 MTH Warranty. Financing Available.

Bay Chevrolet Inc.
Kaneohe 235-3621

WE PAY MORE! MORE! MORE!

FOR CLEAN LATE MODEL CARS, VANS & TRUCKS AT

SHELLY
PH. 836-0466
CORNER NIMITZ & LAGOON

CHECK OUT THESE GREAT USED CAR VALUES

'75 FIAT SPIDER 5 spd., new jet black paint, custom stripes. Stk. P210 **\$3395**

'77 OLDS CUTLASS 2 dr., air cond., auto., AM/FM, rally wheels, low miles. Lic. #BEX057 **\$3395**

'78 FIAT X19 5 spd., alloy wheel, new radials. Lic. #AR634 **\$4895**

'72 VW BUS 7 passenger, new white paint. Lic. B0F800 **\$2695**

'79 TOYOTA COROLLA 2 dr., economy 4-cyl., auto., custom wheels. Lic. AGV906 **\$3595**

'72 BMW BAVARIA Excel. cond., auto., air cond., AM/FM cass. Hurry. Won't last. Lic. B6J477 **\$4995**

'78 HONDA ACCORD 5 speed, new paint, radial tires. Lic. BFA027 **\$3995**

'76 VW RABBIT 4 dr., std. trans., new radial tires. Buy Now at Wholesale Price. Lic. No. AGP457 **\$2595**

'79 JEEP WAGONEER 4WD One owner, air cond., auto. Great for pulling boats or horse trailers. MBK058 **\$5995**

'75 BUICK SKYLARK 2 dr., air cond., auto., power steering. Lic. AEX405 **\$1895**

'72 CAD. DEVILLE Loaded 4 dr., radial tires, nice trans., car eqpt. with program gas. Lic. ANP480 **\$995**

'80 BUICK SKYLARK 4 dr., sedan, air, auto., p/s. Lic. BCP006. Must See To Believe **\$5995**

18 months/18,000 mile warranty

Jim Siemons Imports
Volvo Fiat
86-075 Kam Hwy.
Also
Opposite Peabridge
427-7814

THE INCREDIBLE SHRINKING PRICES!
SEE US BEFORE YOU BUY

Best Wagon Selection on Oahu
Manufacturer's Suggested Retail Price \$6811

OUR PRICE \$6464

Also **SHRINKING**
DL Hatchback, 5-Speed \$5353

Good thru 9-30-81

Lease or Finance with Approved Credit
Financing for Military Available

WINDWARD SUBARU
Factory Authorized Sales & Service
737 KAILUA RD., KAILUA 262-6576

WINDWARD TOYOTA

GO FOR THESE: SAVINGS SELECTION QUALITY ECONOMY

GREEN LIGHT SALE

THESE ARE MARY MURPHY!

'74 FORD MONTEGO Auto. 7341 **\$701**

'74 VW DASHER Auto. 7348 **\$901**

'75 INT'L SCOUT P/U Auto. 7282 **\$901**

'75 FORD PINTO S/W Auto. 7301 **\$1701**

'75 FORD GRANADA Auto. p/s. 7284 **\$2101**

'76 AMC SPT/BT Auto. 7323 **\$2201**

'77 CHRY. CORDOBA Auto. p/s. a/c. 7320 **\$2601**

'76 VW SCIROCCO 4 spd. 7343 **\$3901**

'78 RANCHERO Auto. p/s. 7362 **\$4101**

'77 TOYOTA CELICA L/B 5 spd. 7334 **\$4201**

'78 TOYOTA CELICA L/B Auto. p/s. 7347 **\$4701**

'80 DATSUN P/U 4 spd. 7324 **\$5401**

Prices Good Till Sept. 24 1981. Subject to Prior Sale.

NOTICE!

WE OFFER COST PLUS 4 1/2%

On Any New Rabbit (Gas, Diesel or Pickups)

Offer Ends September 30, 1981

(We Will Gladly Show You Our Cost!)

When You Purchase Your Next Car From Us!

Financing Available

WINDWARD VOLKS

"In The HEART OF KAILUA"
(WORTH THE TRIP FROM ANYWHERE)

725 KAILUA ROAD PH. 262-6576

WIN-WITH-VOLKSWAGEN SWEEPSTAKES ENTRY FORM

Please fill in your name and address, then have this entry form validated. It will qualify you for the Win-with-Volkswagen Sweepstakes.

NAME _____

ADDRESS _____

CITY, STATE, ZIP _____

DEALER VALIDATION/NUMBER _____

SAMPLE

GRAND PRIZE
New 1982 Volkswagen Jetta
Winner's choice of color and factory-installed options

20 PRIZES
of \$250 Gift Certificates applicable toward the purchase of parts & accessories, services or a new or used Volkswagen at participating Volkswagen dealers. Prizes redeemable at the dealership named on the entry form.

SHELLY WILL NOT BE UNDERSOLD

'79 JEEP
CJ5, 4x4, low mi., spoke rims with wide track tires, fire engine red. Must see. (BCR387) **\$5995**

'73 SATELLITE
Sebring + Htdp. V8, auto, power steering / bucket seats, clean as a pin in & out. A steal! (BAY883) **\$995**

'73 SUPER BUG
Mags, Hurst shift, stereo cassette, recent engine work. Won't be with us long. (BJ8885) **\$2495**

'78 COUGAR
Brougham, impeccable, air cond., low mi., bucket seats, one of the cleanest we've ever had. (AJN619) **\$3995**

'77 PLYMOUTH
ARROW Hatchback, auto, stereo, low mi., canary yellow, 4 cyl., a hard to come by model. (BBF987) **\$2995**

'76 MUSTANG
Htdp., V8, 4 spd., air cond., low mi., fantastic in & out. A very reliable 2nd car. See today! (AJX813) **\$2995**

'80 RABBIT
Diesel, 4 dr., low mi., factory air cond., deluxe model. Ass't. Sales Mgr.'s personal choice. The car of the future. Must sell by weekend. (ANY259) **\$5995**

'75 MONTE CARLO
Htdp., V8, auto., power steering, recent trans overhaul. 1 fire engine red. Price ridiculously for limited sale. (ANW328) **\$1495**

'81 MAZDA
626 Htdp., 5 spd., tinted windows, 1 owner, low mi., 4 cyl., like green in color. Be first this weekend. Only 1 avail. (AJB276) **\$6995**

'79 MAZDA
RX7 GS 5 spd., sunroof, AM/FM stereo, canary yellow with mags. a remarkable price. (BLD158) **\$6795**

'79 TOYOTA
LANDCRUISER 4x4, softop, mags, 4 spd., roll bar. Outside island special. Financing avail. Call Lou (MEH879) **\$5995**

FREE SHIPMENT TO OUTER ISLES.

'78 FORD
FAIRMONT, V8, auto, power steering, air cond., custom stripping. A give-away price. (AJB534) **\$2695**

'80 GRANADA
Htdp., 1 owner, 6 cyl., air cond., low mi. Should be sold from our showroom. A steal! (AXF245) **\$4995**

'80 CORVETTE
Htdp., black on black with tinted windows. Loaded! Loaded! 10,000 mi. Must be seen. Many more to choose from. (ADP158) **Save**

'77 PORSCHE
924, Martini & Rossi special. A give-away price. Plus other 924's & 911's. View today. (APY645) **\$6995**

All units subject to prior sale.

SHELLY CARS
836 0466