

HAWAII MARINE

Voluntary payment for delivery to MCAS housing/\$1 per four week period

VOL. 10 NO. 7

KANEOHE BAY, HAWAII, FEBRUARY 18, 1981

TWENTY PAGES

Pass in Review

National Patriotism Week

WASHINGTON, D.C. — By presidential proclamation, this week has been declared National Patriotism Week. Former President Jimmy Carter, in issuing the proclamation stated, "We live in a nation we all care about deeply. It is important that we continue to care, that we continue to respect ourselves and each other, and that we honor our past and present by reaffirming our commitment to the greatness that is ours."

Federal agencies have been asked to recognize the week by taking action deemed appropriate.

Discount air fares

WASHINGTON, D.C. — Republic Airlines has joined 12 others now offering a 50 percent discounted military furlough fare.

The discount, which began Feb. 1 for all routes served by Republic, will continue through March 31, according to the Washington-based Military Transportation Management Command.

With the addition of Republic, virtually all major United States airlines now offer similar discounts. Those discounts, announced over the past three months, will also continue through March.

Delta Air Lines also has officially joined 13 other carriers offering a 50 percent discount military furlough fare. The discount is effective now through March 31 on all domestic flights served by Delta.

Patrons are advised that fares are to be used for travel on authorized leave, pass, or within seven days of separation. The cost to the patron will not be reimbursed by the government.

Misuse of this discount advantage will result in the immediate cutoff of the fare. Travelers are also advised that Delta Air Lines does not service Hawaii, therefore, rates are not applicable to patrons here.

For additional information, contact the Scheduled Airlines Ticket Office at 254-1564.

Competition-in-Arms Program

The schedule for the 1981 Competition-in-Arms Program has been announced by Headquarters Marine Corps training officials.

The program, designed to promote marksmanship excellence throughout the Marine Corps, consists of division and Marine Corps matches to be held at the following locations:

East Division Match, to be held April 13 through 17, at Camp H.M. Smith, Hawaii. The Western Division Match takes place April 27 through May 1, at Camp Pendleton, Ca., and the Eastern Division Match will be at Camp Lejeune, N.C., from May 4 through 8.

Winners from these matches will advance to the Marine Corps Match, to be held May 18 through 22, at Camp Lejeune.

For more information on the 1981 Competition-in-Arms program, see Marine Corps Bulletin 3591 of Dec. 19, 1980.

Authorized promotions

WASHINGTON, D.C. — Manpower officials here have released the numbers of promotions to corporal, authorized to take place starting this month.

The following list of 3,300 authorized promotions, includes quotas for all Occupational Fields, and minimum composite (cutting) scores required for promotion to corporal:

OF	QUOTA	SCORE
01	214	1526
02	2	1479
03	761	1561
04	17	1332
06	33	1596
11	22	1571
13	129	1557
14	3	1481
15	13	1443
18	24	1654
21	74	1274
23	37	1362
25	74	1611
26	23	1433
28	78	1340
30	309	1516
31	52	1392
33	202	1475
34	40	1311
35	60	1607
40	29	1321
41	0	—
43	4	1082
44	19	1306
46	16	1327
47	29	1292
57	1	1752
58	121	1499
59	15	1324
60	270	1508
61	50	1557
63	243	1526
64	85	1510
65	74	1585
66	11	1384
68	55	1379
70	55	1354
72	5	1335
73	5	1335

No composite scores were submitted for OF 21.

Crime rate decreases

Reported crime at MCAS Kaneohe Bay is decreasing.

The Provost Marshal's Office recently released their annual statistical report on crime at the air station and the downward trend in criminal activity is welcome news.

STATISTICS PRESENTED in the report show a sharp drop and additionally serve as an overview of the Security Department's activities during 1980. Major areas addressed concern reported crimes against persons, crimes against property and off-station assaults.

Based on the numbers of crimes reported in 1980, the air station experienced a 19.3 percent decrease in crimes against persons, a 19.5 percent decrease in crimes against property and a dramatic drop in the number of off-station assaults, down 44.3 percent from 1979. This has been an area of major concern for the past few years.

Despite the good news, LtCol Ron Neubauer believes this is no time to rest on past laurels. In the report he cautions personnel against becoming complacent.

"While there is a definite down trend in each of these areas, the need to remain alert is ever present," he cautioned. "Only the total cooperation of individual leaders,

commanders and parents can create the situation where the favorable down trend in criminal activity will continue."

The Station Security Department played an instrumental part in 1980's crimefighting success by providing public awareness programs in an effort to keep the public knowledgeable of troublesome areas and providing commands with updates on how to assist in combating crime.

HERE IS A BREAKDOWN of figures in some of the Class I and Class II crime categories for the years 1979-80.

Class I Crimes:
Aggravated Assault — 1979-27; 1980-25

Simple Assaults — 1979-187; 1980-147

Burglary/Housebreaking — 1979-138; 1980-64

Larceny of Private Property — 1979-637; 1980-541

Larceny of Government Property — 1979-106; 1980-106

Motor Vehicle Theft — 1979-25; 1980-17

Marijuana — 1979-604; 1980-532

Narcotics — 1979-26; 1980-12

Class II Crimes:
Child Abuse/Neglect — 1979-22; 1980-5

Juvenile Complaints — 1979-111; 1980-54

Destruction of Private Property — 1979-266; 1980-208

Illegal Entry/Trespassing — 1979-145; 1980-78

Driving Under the Influence — 1979-74; 1980-82

Substance Abuse — 1979-468; 1980-363

Animal Bites — 1979-48; 1980-36

Animal Impounds — 1979-676; 1980-366

ASKED FOR HIS reaction to the report, Col Mel Sautter, commanding officer of the air station said: "Although I'm pleased with the positive trends reported for 1980, I'm more appreciative of the strong interest everyone has shown, in reducing our crime rates. Good law and order is everyone's business and the more concerned our law abiding citizens become the lower our crime rates will go. So get involved and help make our air station the finest place you have ever lived or worked."

Strike

Traffic controllers threaten walkout

WASHINGTON, D.C. — Air traffic controllers are talking strike next month, and if that happens, nationwide air travel could be slowed by 70 percent, warns the Washington-based Military Traffic Management Command.

A strike or other job action by the Professional Air Traffic Controllers Organization could reduce the number of air traffic controllers by 85 percent, according to

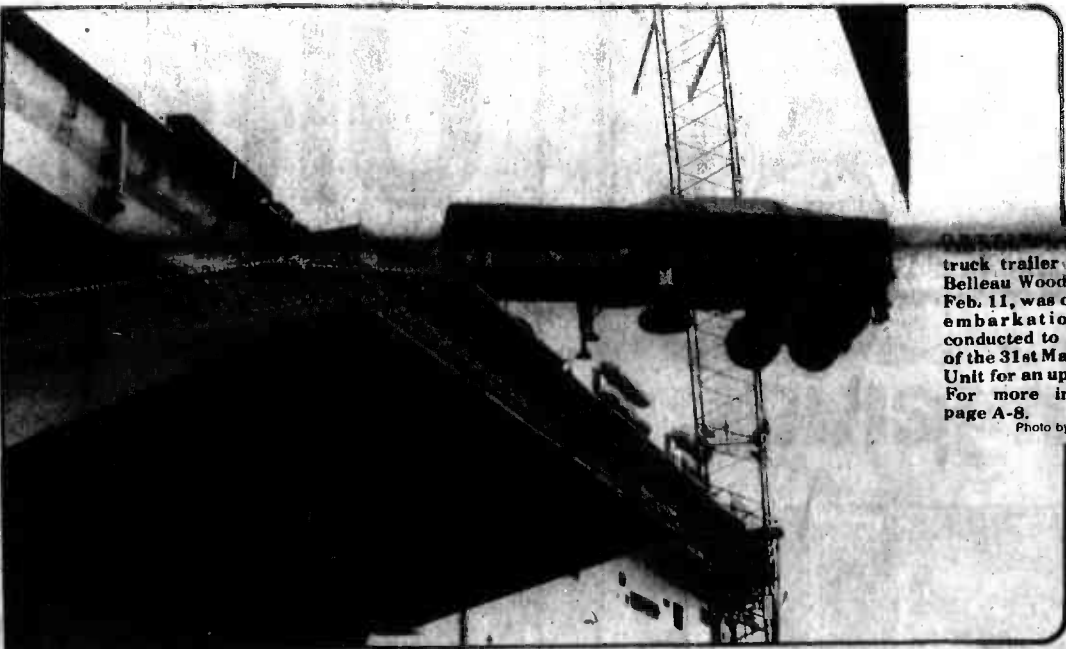
the Federal Aviation Administration.

If this happens, air traffic control would be maintained by supervisors, controllers not joining the strike, and other qualified employees.

A flight-priority system would be set up, based on the strike's impact, and getting first priority would be air traffic essential to national defense. Following that would be medical emergency

flights, long-range flights (500 miles or more), and short-range flights.

Department of Defense-sponsored passenger flights would be at the top of the priority list. But, before air-travel passengers are booked, installation transportation offices would be asked to reschedule or postpone air travel when possible, or divert all but mission-essential or emergency travel to surface transportation.



truck trailer aboard the USS Belleau Wood. The maneuver, Feb. 11, was only one phase in embarkation procedures conducted to prepare Marines of the 31st Marine Amphibious Unit for an upcoming exercise. For more information, see page A-8.

Photo by SSgt Joseph Blackburn

Marine receives death penalty

CAMP LEJEUNE, N.C. — A seven-member jury of Marine officers and staff noncommissioned officers here sentenced LCpl Armando Rojas to the death penalty, Jan. 30 after earlier convicting him of several charges including premeditated murder.

The 21-year-old Marine was

charged with the July 20 murder of PFC Raymond St. Onge.

The court-martial hearing ended Jan. 14 in Rojas' conviction of premeditated murder, conspiracy to commit premeditated murder, larceny, solicitation of another to commit premeditated murder and

two counts of solicitation of another to become an accessory after the fact in connection with St. Onge's murder.

PFC Jeffrey Reyers was charged as co-conspirator in the incident. He was convicted in November of premeditated murder and conspiracy to commit premeditated

murder. He received a life sentence for his part in the murder.

The members deliberated just under two hours before returning the sentence of death, reduction to private and forfeiture of all pay and allowances.

There is no conclusive evidence that a Marine has ever been executed for murder as the result of a court-martial conviction, according to the Headquarters, Marine Corps' legal experts. The possibility exists that a Marine was executed for murder in 1817, says James E. Valle, author of Rocks and Shoals, published by the Naval Institute last year.

The last military man to be sentenced to death was Army PFC James L. Mathews in July 1979. That case is pending review by the Army Court of Military Review in Washington, D.C.

Seaman Jimmie L. Henderson is the last known sailor to be sentenced to death for murder. His sentence, imposed in 1957, was commuted to life imprisonment by President Kennedy in 1961.

Rojas' record of trial will be reviewed by a general officer then the Court of Military Appeals.

Further review by the president of the United States is required if the death penalty then stands approved.

Officials testify before committee

Naval leaders set priorities

WASHINGTON, D.C. — Testifying before the Senate Armed Services Committee Feb. 5, both Secretary of the Navy John Lehman and Chief of Naval Operations Adm. Thomas B. Hayward said Navy people are performing at tremendously high levels.

IN SPEAKING on priorities for the naval forces, Lehman said his first would be the restoration of the prestige and compensation of Navy and Marine Corps personnel. While commending Congress for the Nunn-Warner and other pay raise compensation items recently enacted, he cautioned that those packages had not "fixed" the manpower problem.

He further stated that during his tenure as Secretary, the Department

of the Navy would never relent in efforts to improve the quality of life and career satisfaction of Navy and Marine Corps men and women.

Citing the performance of Navy personnel in the Indian Ocean as an example, Hayward told the committee that Navy people are rising to the challenge and performing in a magnificent way, with great distinction.

IN HIS ANNUAL report on the posture of the Navy, Hayward said his first priority continued to be military pay and compensation for personnel. He said the compensation legislation enacted by Congress last year was a strong and credible signal from Congress to all Navy people.

"... The country recognizes their vital contribution and intends to

compensate them fairly..." he said. The Chief of Naval Operations stated that Navy people provide the country with the kind of flexible, versatile military power it requires in far-flung parts of the world.

Saying we have a far better Navy today than we did three years ago at the time of his first report to Congress as CNO, Hayward said the Navy has some of the most advanced technology American industry can provide.

HAYWARD stressed that improved naval capability should not be judged alone, but should be related to other factors such as the rapidly improving Soviet navy and our readiness for sustained operations in any given combat situation.

At a glance

Black History

The Joint Human Affairs Office, MCAS Kaneohe Bay, will hold a course on Black History Friday at 6:30 p.m. in the JHAO classroom in Bldg. 220. The course will be designed to instill a sense of awareness in young Americans about the contributions of black men and women to the country's growth.

MSgt Jeff Lambert of the Joint Human Affairs Office, and Risa Harris will moderate the class. Members of the command, their families and guests are invited to attend this black historical experience.

For more information contact MSgt Lambert at 267-2795.

Cash Sales

The Retail Clothing

Store will close for monthly inventory Monday through Feb. 26. Normal business will resume at 8 a.m. Feb. 27.

Post Office

The Unit One Post Office located in the Main Exchange complex, will be closed Monday through Feb. 27 due to a brigade command post exercise. The post office will resume normal working hours March 2.

Parent's Awareness

The Parent's Awareness Program of Armed Services YMCA Outreach at MCAS Kaneohe Bay, will sponsor a presentation, "Because I Said So!", by Dr. Larry Lister, D.S.W., and Dr. Ronaale Wellington, D.S.W., Feb. 25, from 7 until 9

p.m. in the Youth Room of Bldg. 455. The discussion involves the use and abuse of power within the family.

The program is open to the public, and child care will be provided for the evening at 50 cents per child. For information and reservations call ASYMCA Outreach at 254-4719 or 254-4965.

Radio returns

Patrons waiting for the evening's feature to start at the Family Theater get a little something extra for their price of admission. They get Hawaii Marine Radio.

The half-hour radio-style program features hit music and current information about what is happening around the air station. The shows are produced by the Joint

Public Affairs Office Radio and Television Section.

So the next time you visit the Family Theater drop in a few minutes early and listen to Hawaii Marine Radio. It's one of the few things that's still free.

Children's Parade

The second Kailua All Kailua and

Children's Day Parade is planned for April 18 at 10 a.m. for children 12 and under.

Sponsored by the Kailua Chamber of Commerce and the Oloiana Lions Club, the parade will start at Kailua Intermediate School and end at the Kailua Pavilion.

Marine Corps Air Station Kaneohe Bay residents are encouraged to come out and help the keikis celebrate their day. Merchants will offer specials for children only. Watch for a special section in the Sun Press.

For more information concerning the parade and pavilion

entertainment please call Kathy at 261-2727.

Toastmasters

The Camp Smith International Toastmasters Club is seeking new members for their chapter.

Toastmasters International offers the opportunity to develop skills in speaking and

provides a stimulating, educational program.

The club meets promptly at noon on the second and fourth Tuesdays of each month in the CINCPac PAO conference room.

For more information, contact Capt Bill Archibald at 477-6352, Cpl Frank Romero at 477-5050 or Lt Charles White at 477-6624.

You can't
lose with
U.S.
Savings
Bonds.

GETTING DIVORCE?

HUSBAND & WIFE SHOULD DIVORCE ONLY IF THEIR MARRIAGE IS IRRETRIEVABLY BROKEN. A BAD MARRIAGE IS "HELL ON EARTH" FOR LESS PAIN, LOSS, REGRET, GET A GOOD LAWYER.

FREE Case Evaluation - 1st Appointment
Divorce/Divorce/Injuries/Damages/Business/Real Estate/
Wills/Criminals/History/Immigration/Collections/
ALL LAW MATTERS

LAWYER LOO TRIAL
FRANK **LAWYERS**
for the people
THE FIGHTER Since 1953
*Yale Law School Graduate/Degree Juris Doctor, LL.B.
*AL, 65... with Honors
*Mechanical/Engineer/Businessman/Real Estate Broker
Public Servant
24 Hr. HOTLINE Ph. 533-3397 90 N. King St. HONOLULU

Need A
LAWYER
WHO CARES?

low rates

family law

- adoption - divorce - real estate
- bankruptcy - juvenile - wills

michael pence
955-4496

VIDEO TAPE MOVIES

VHS or BETA
Over 200 titles to choose
Watch what you want - when you want
\$10.00 for 10 Days
Order by phone. Delivery and return by mail.
Fast • Easy • Convenient
Phone us for free listing of titles and order form.

VIDEO PACIFIC
PH. 836-3557
MON.-FRI. • 7:30-3:30 P.M.

SOFT CONTACT LENSES

\$105

effective until 2/28/81

- Includes standard soft contact lenses, care kit, follow-up care by Dr. Dean and
- 90 DAY TRIAL PERIOD**
- Properly fitted lenses, high quality materials and thorough follow-up care are necessary for success in wearing contact lenses
- COMPLETE PROFESSIONAL VISION SERVICES**
- Specializing in contact lenses
- Soft contact lenses for Astigmatism & continuous wear also available
- One day service available for glasses and hard contact lenses
- Immediate service available for soft contact lenses
- ONE YEAR GUARANTEE ON ALL GLASSES**

Dr. Charles Dean
Ophthalmologist

KAILUA
139 Hekili St.
261-9825

Ingenius.



NEW!

DIMENSION 3 MICROWAVE/ CONVECTION OVEN NE-9900

3 Different ways to cook quickly, naturally and evenly. PLUS Panasonic's Unique COOK-A-ROUND Magnetic Turntable.

- The Convenience of MICROWAVE COOKING**
 - Defrost, thaw and cook foods in a flash
 - Cook by Power and Time or by Temperature Probe
- The Tasty Appeal of CONVECTION COOKING** for Browning and Baking
 - Meats come out tender and evenly browned
 - Breads, pastries, cakes and pies done by constant circulation of dry, heated air.
- The Unmatched Speed & Versatility of COMBINATION MICROWAVE/CONVECTION COOKING**
 - The best of both worlds... fast cooking with eye appeal for meats, roasts, pork, lamb or poultry.

Panasonic

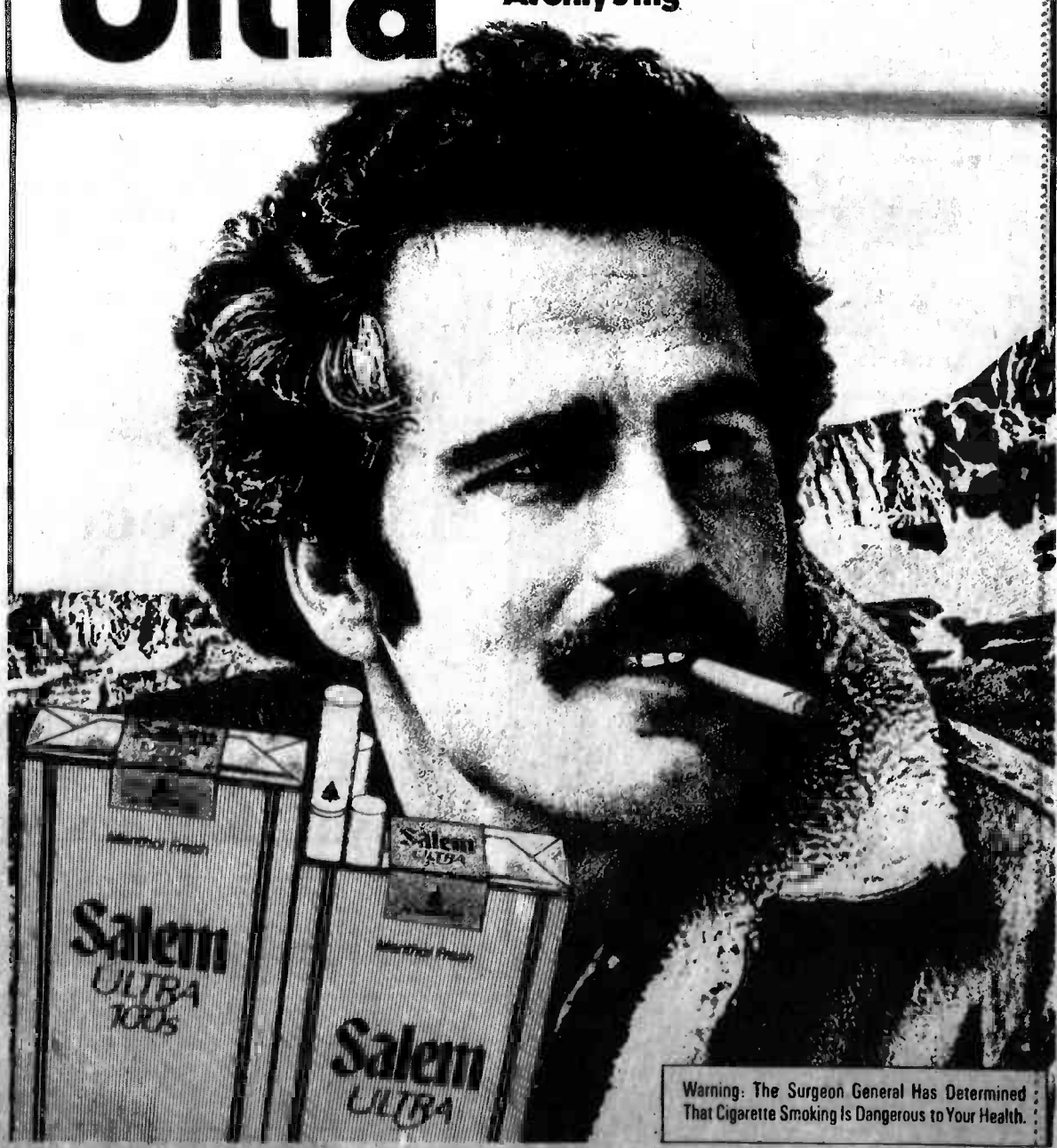
just slightly ahead of our time.

Available At Your Military Exchange

Salem

Ultra

Ultra low tar. High country taste.
Above all in refreshment.
At only 5 mg



Warning: The Surgeon General Has Determined That Cigarette Smoking Is Dangerous to Your Health.

5 mg. "tar", 0.4 mg. nicotine av. per cigarette by FTC method.

The Hawaii Marine is an unofficial newspaper published every Wednesday by Community Publications, Inc., 46-016 Alalua St., Kaneohe, Hawaii 96744, in the interest of U.S. Marine Corps personnel in Hawaii. All news copy is prepared in the Joint Public Affairs Office, Marine Corps Air Station, Kaneohe Bay, Hawaii 96863. Copy must be submitted no later than noon Thursday for the following Wednesday publication. Hawaii Marine solicits contributions of information and photographs from all Marine Corps organizations. However it reserves the right to edit or rewrite material submitted. All advertising is arranged by the publisher, Community Publications, Inc., telephone 235-5841. Circulation is 8,000. Everything advertised in this publication must be made available for purchase, use or patronage without regard to race, creed, color, national origin, age or sex of the purchaser, user or patron. A confirmed violation or rejection of this policy of equal opportunities by an advertiser will result in the refusal to print advertising from that source.

HAWAII MARINE

GRAND CLOSING

Closing our
Kapiolani Offices!
We're moving
to a bigger
better location!



NEW
MAIN OFFICE
1232-A
WAIMANU
STREET

GIVE AWAY!

TWO ROUND-TRIP TICKETS TO LAS VEGAS WITH 4 DAYS AT THE CALIFORNIA HOTEL AND

\$500 CASH

Drawing takes place April 15, 1981 • NO OBLIGATIONS. You need not be present to win. KM employees & family not eligible.

SHOP & COMPARE!

CASH ON SPOT!

BUYING GOLD PLATE!

MAKE
US YOUR
LAST
STOP

KAMAAINA BUYS METALS

at all Four Locations

WE WILL MEET OR BEAT ANY
LEGITIMATE OFFER.

- GOLD • COLLECTIBLES • COINS
- DIAMONDS • WATCHES • BROOCHES
- SILVER • BRACELETS • SWORDS

We Buy
ANYTHING
In This Ad
In Any
Condition
FOR CASH!



GOLD IN ANY FORM



Anything marked 10K to 24K, anything unmarked broken, unbroken, working or not working polished or tarnished... in any condition.

BOULLION, KRUGERAND DENTAL GOLD, ANY GOLD

14K 36 gram
CLASS RINGS \$400

14K Wedding Bands \$25 to \$200

14K Wrist Watches \$15 to \$200

10K DWT.	\$7 to \$14	14K DWT.	\$8.50 to \$19.00
18K DWT.	\$12.50 to \$29	CHINESE GOLD DWT.	\$14 to \$22

PRICES BY DWT. MAY FLUCTUATE DUE TO MARKET CONDITIONS

COME IN FOR A QUOTE TODAY
NO MIDDLE MAN TO PAY!!
DEAL WITH HAWAII'S LARGEST
GOLD & SILVER REFINERS & BUYERS

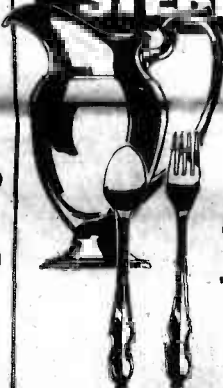
GOLD COINS

\$ 1.00 U.S. Gold Coins—We Pay	\$90 & up
\$ 2.50 U.S. Gold Coins—We Pay	\$80 & up
\$ 3.00 U.S. Gold Coins—We Pay	\$500 & up
\$ 4.00 U.S. Gold Coins—We Pay	\$18,000 & up
\$ 5.00 U.S. Gold Coins—We Pay	\$105 & up
\$10.00 U.S. Gold Coins—We Pay	\$180 & up
\$20.00 U.S. Gold Coins—We Pay	\$510 & up
\$50.00 U.S. Gold Coins—We Pay	\$4,000 & up

PLEASE NOTE: WE PAY AT LEAST TWICE ABOVE PRICES FOR U.S. GOLD COINS DATES 1833 OR BEFORE

FOREIGN GOLD COINS
PLEASE BRING FOR OUR OFFER.

STERLING SILVER



In any condition!

.925 STERLING \$800 per oz. & up

ART BARS Partial or Full Sets

.925 BARS \$850 per oz. & up

.999 BARS \$1200 per oz. & up

STERLING TRAYS
\$190 to \$2500

COINS

NUMISMATIC PRICES FOR COINS
WORTH MORE THAN THE PRICES
SHOWN HERE.

SILVER DOLLARS

1935 or before
Used or Circulated \$1350 & up

1904 or before
Used, Uncirculated \$1700 & up

1922-1935
Uncirculated \$1850 & up

Paying 9 Times
Face For U.S.
Silver Coins

Half Dollars 1964 or before \$450 & up

Quarters 1964 & before \$225 & up

Dimes 1964 & before 90c & up

Half Dollars 1965-69 \$110 & up

POCKET WATCHES

	Open Face Gold Case	Gold Closed Face	Marine-Resistant	Stop Watch	Calendar Watch
Patek Philippe	\$600	\$900	\$5000	\$1800	\$1500
Julius Jurgensen (pre-1900)	700	850	5000	1500	1500
Henry Capt	600	900	25000	1000	1500
J. Assmann	800	1200	12000	2000	3000
A. Lange	900	1000	17500	2500	3500
K. Grossman	850	1100	10000	2000	3000
Ekogren	450	600	3000	1500	2500
C. Frodsham	700	850	7800	2300	4000
Audemars	400	600	3500	1250	1500

Any pocket or wrist watch not listed, please bring in for our offer. Please note that on the high priced watches the condition of the dial and movement and whether the case is original or not has an effect on the value. (Watches need not be running, just complete.)

DIAMONDS

49 Points & Under

\$1 to \$8 point

50 to 99 Points

\$2 to \$2000 per point

One Carat & Over

\$200 to \$8000 Per Carat

We recently paid \$65,000 for a 2.97 carat, clear G-colored diamond.



ESPECIALLY WANTED
Mine & European Cut Diamonds

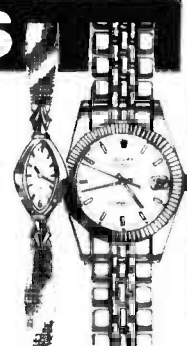
WATCHES

MEN'S GOLD ROLEX

UP TO \$2000

MEN'S ELGIN

\$3 TO \$400



ROLEX WRIST WATCHES

Men's S/S	\$25	Men's Date (just Gold)	\$500
Men's Gold Case	\$150	Ladies' Date (just Gold)	\$300
Ladies' Gold Case	\$100	Men's Day/Date	\$1000
		Same President Band	\$3000

BUYING
SAMURAI SWORDS
For Cash

PHONE 526-1502
Outer Islands call collect

KAMAAINA METALS

If we buy your item, this coupon will get you an additional dollar on our purchase.
PLEASE PRESENT THIS COUPON AT TIME OF PURCHASE
Limit one coupon per customer
Good thru Feb. 28, 1981

ALA MOANA
1232-A Waimanu St.
Near Piikoi

IN AIEA
Suite 322
Newtown Square

KAHALA
Near McDonalds
4614 Kahaue Ave., #106

ON MAUI
Puuhoe Towers
1063 Lower Main
Suite C-202

ATTENTION SELLERS AND PUBLIC
All Sellers must be 18 years of age, or accompanied by parent with proper identification (drivers license, voter citizen card, or I.D. Card with photo). Due to Market conditions, we reserve the right to limit quantities and change prices without notice.

AMPLE
PARKING

OPEN MONDAY THRU SATURDAY 10 am-6 pm

EDITORIAL / OPINION

Street Scoop

"What are you going to do with your income tax refund?"



1stLt Douglas Berliner, HMM-165: "Part of it I'll use to pay off my automobile, and the rest for equipment for deployment. I hope to get some living room furniture in the Philippines and camera equipment in Hong Kong."



PFC Matthew Bass, BSSG: "I'm going to send it home. My parents need it more than I do."



Petty Officer Third Class Frank Paulette, Co. 1, 3/3: "Buy a Nikon camera while I'm on float."



PFC Patricia Feyder, H&MS-24, supply: "Put it in the bank. I don't need it right now, so I'll just let it draw interest."



Sgt William Meeks, MAG-24, supply: "I'm going to buy some Hawaiian gifts for all my relatives at home in West Virginia. They will probably never have a chance to come to Hawaii."

America waves star-spangled banner

by Father John Newton

Pardon me if I wave the flag a little bit. Why one should have to apologize for waving his country's flag is a puzzle. Nevertheless the term "flag-waver" has become one of derision, hasn't it?

However, it is becoming more popular to be patriotic today. The tension of these treacherous, tedious times is beginning to be reflected in the new surge of national interest in the concepts of freedom, democracy and human dignity.

AMERICANS ARE once again evaluating the importance of liberty and independence. The slumbering minute man spirit is once again on the move. The cry "The Red Coats are coming" is stirring the embers of national pride and is sparking a vigorous determination that the Star-Spangled Banner always will wave over the land of the free and the home of the brave.

Freedom, liberty and equality are not accidents of birth. They are not merely high-sounding words. They are hard-won and must be continuously defended realities. Only when each citizen of a free land sees and accepts a personal responsibility to strengthen and defend these treasures with his life, his fortune and his sacred honor, will they survive.

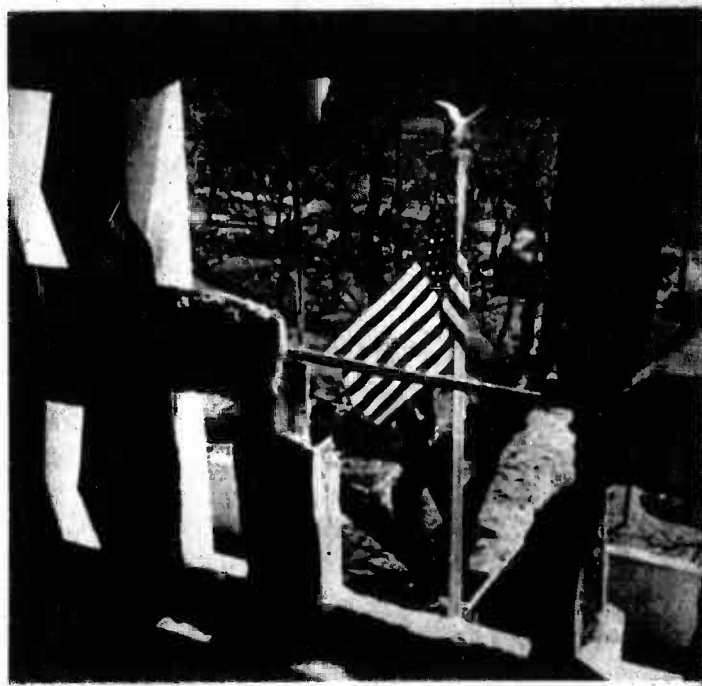
Each of us must stir his own patriotic zeal, his own devotion to duty, his sense of dedicated service. Each must consecrate all

of his talents, all of his abilities to the successful attainment of the goal of liberty for all. No stone can be left unturned, no half-hearted effort will suffice. Each must contribute his best . . . not what is merely acceptable here and now . . . but the best he can do . . . now, and from now on.

There are those today who would still the voice of the Liberty Bell. They would, perhaps, take that blessed symbol of independence and beat it into a hammer and sickle, or form it into an ominous star and paint it red.

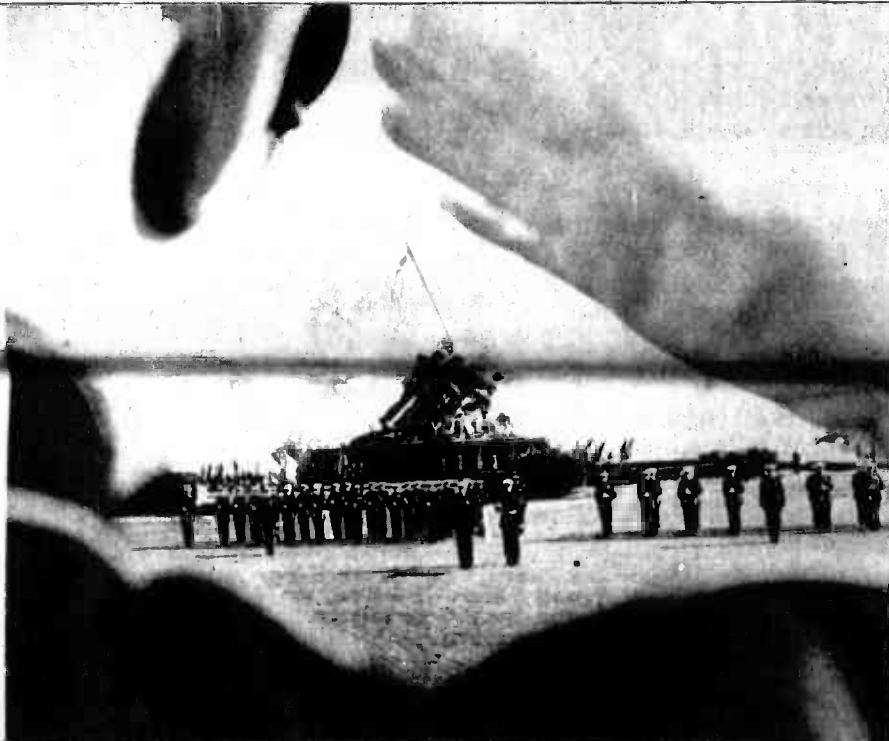
SOMEWHERE DEEP in the heart of each American surges the same blood of patriots that secured for us the blessings of freedom. A part of each of us rode with Paul Revere, we pounded the powder in the muzzle and pulled the triggers with the Minute Men at Concord, our toes touched down at Plymouth Rock, we painted our bodies for war and splashed the tea in Boston Harbor, we signed the Declaration of Independence.

Shall it be told to future generations, perhaps in Russian, perhaps in Chinese, that in the 20th Century when the torch of freedom shone brightest, there was no hand to hold it aloft? That the hands of the 20th Century Americans were too busy counting their money, turning the knobs on their TV sets, patting their fat bellies, pampering their well deodorized hides to pick up their sacred heritage of independence and protect it? Forbid it, almighty God!



I am Old Glory: For more than nine score years I have been the banner of hope and freedom for generation after generation of Americans. Born amid the first flames of America's fight for freedom, I am the symbol of a country that has grown from a little group of thirteen colonies to a united nation of fifty* sovereign states. Planted firmly on the high pinnacle of American Faith my gently fluttering folds have proved an inspiration to untold millions. Men have followed me into battle with unwavering courage. They have looked upon me as a symbol of prayer that they and their fellow citizens might continue to enjoy the life, liberty and pursuit of happiness, which have been granted to every American as the heritage of free men. So long as men love liberty more than life itself; so long as they treasure the priceless privileges bought with the blood of our forefathers; so long as the principles of truth, justice and charity for all remain deeply rooted in human hearts, I shall continue to be the enduring banner of the United States of America.

*Updated. Originally written by Marine Master Sergeant Percy Webb (1879-1946). Sergeant Webb wrote this famous flag tribute in the original "Old Glory" booklet first distributed at the Chicago World's Fair, 1951.



From the Halls of Montezuma to the shores of Tripoli;
We fight our country's battles in the air, on land, and sea;
First to fight for right and freedom and to keep our honor clean;
We are proud to claim the title of UNITED STATES MARINE.
Our flag's unfurled to every breeze from dawn to setting sun;
We have fought in every clime and place where we could take a gun;
In the northern lands and in sunny tropic scenes;
You will find us always on the job—THE UNITED STATES MARINES.
Here's health to you and to our Corps which we are proud to serve;
In many a strife we've fought for life and never lost our nerve;
If the Army and the Navy ever look on Heaven's scenes;
They will find the streets are guarded by UNITED STATES MARINES.

Caution deters future mishaps

Parents responsible for safety education

On January 29, a nine-year-old dependent daughter was struck by a vehicle at the crosswalk on Lawrence Road while en route to Mokapu Elementary School.

HER CONDITION at the time of the accident was reported as "guarded." Happily, at this writing she is well on the road to recovery. She was released from Tripler Army Medical Center and returned to school this week.

The aftermath of this unfortunate accident has been a flurry of meetings and activity on the part of parents and officials of MCAS Kaneohe Bay and Mokapu Elementary School in an attempt to develop safeguards against future mishaps.

Among the changes to be initiated include placing flashing warning lights

and additional signs at crosswalks and the assignment of junior police officers with adult supervisors to monitor selected crosswalks during school hours.

The changes will undoubtedly help, but more can be done and we, as concerned parents and motor vehicle drivers can also do our share in this preventive effort. What it will take is a diligent observance of simple rules both for ourselves as drivers and for our school-age children.

FIRST, HERE is a list of simple rules for parents and concerned drivers to follow while operating vehicles aboard the air station.

—Obey roadway signs, warning lights and markers. They are there for an important purpose — everyone's safety!

—Be alert when driving, particularly in

the vicinity of Lawrence Road, Harris Street, Cushman Avenue, and other roadways frequented by youngsters en route to and from Mokapu School. Pay particularly careful attention at crosswalks.

—Come to a complete halt at the white line that precedes the line that delineate crosswalks when they are occupied. Do not proceed until the crosswalk is completely clear.

—Never overtake or pass a school bus. Stop a reasonable distance (25 feet) in front of, or behind the school bus, depending on the direction you're headed. Never proceed until the bus has driven off and the area is visually clear.

—Never let children off at crosswalks. Drive directly to Mokapu Elementary School to drop them off, preferably via

Cushman Avenue. (To avoid being blinded by the sun when driving east on Mokapu Road.)

—Drive defensively, always be ready to stop if necessary. Be especially wary from 7:15 to 8 a.m. and 2:10 to 3 p.m. when children are en route to and from school. (On Wednesdays, 1:20 to 2 p.m.)

ABOVE ALL ELSE, teach your children to be cautious. Here's a list of simple guidelines to pass on to them.

—Never, under any circumstances run while using a crosswalk. Always walk!

—Obey the old adage of always looking both ways before crossing the street.

—Read and heed street signs that apply to pedestrians.

—Use only the designated and marked crosswalks at Lawrence Road, Manning Street, Cushman Avenue, and Harris Street. That's why they're there.

—When using a crosswalk, don't dally or stop in the middle or turn around to go back the way you came. Keep going till you get across the street. If you must go back, look both ways again before crossing. Don't goof off in the middle of the road.

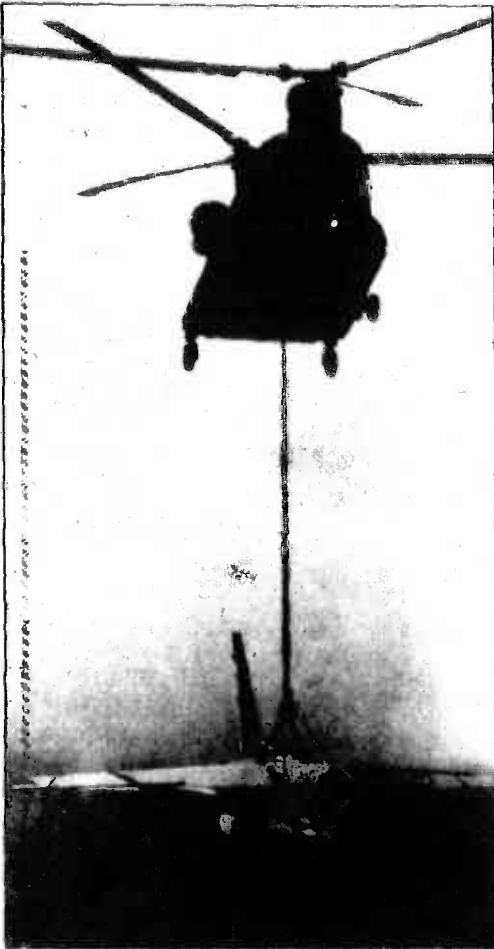
—Children on bicycles should get off them and walk when crossing the street. The same goes for youngsters on skates, skateboards, etc.

—If your child fails to follow these rules and you learn of it, please caution them, stressing your concern for their well-being.

—Advise your child to stay put after getting off a school bus. At least until he is reasonably sure he can cross the street safely and that he can be seen by motor vehicle operators.

REMEMBER, IT'S our responsibility to make sure our children are well-informed. That means they must be reminded of these Rules. Telling them once then forgetting about it just won't do.





Back to the Corps



From ugly duckling to majestic bird

Once upon a time there was a mighty Crusader. For more than 14 years, he flew with the forces which guard our freedom and promote peace. He was majestic, sleek, slender and graceful. He had the speed of lightning and the beauty of a dancer.

When the time came for his retirement, he wasn't sure where he wanted to live out his life. For five and a half years he made his home on the Leeward side of Oahu, but tired of his position, he felt the need to move on.

An old "battle buddy" Col Mel Sautter, commanding officer, MCAS Kaneohe Bay offered him a place to stay for the rest of his days. He has since come to guard the gate of the air station and keeps his vigil night and day.

His journey to the air station was a long and tiresome one. After being inactive for so long, he needed the help of another old friend, a CH-47 Chinook helicopter, from the Army's 25th Aviation Battalion, 25th Infantry Division, Naval

Air Station, Barbers Point to lift and carry him to his final destination.

Upon his arrival, under the skilled hands of Sgt Randy Gearhart, Station Operations and Maintenance Squadron, he was nursed back to health. Sgt Gearhart and numerous others devoted many hours to his recovery and soon he was back on his feet (wheels?) again.

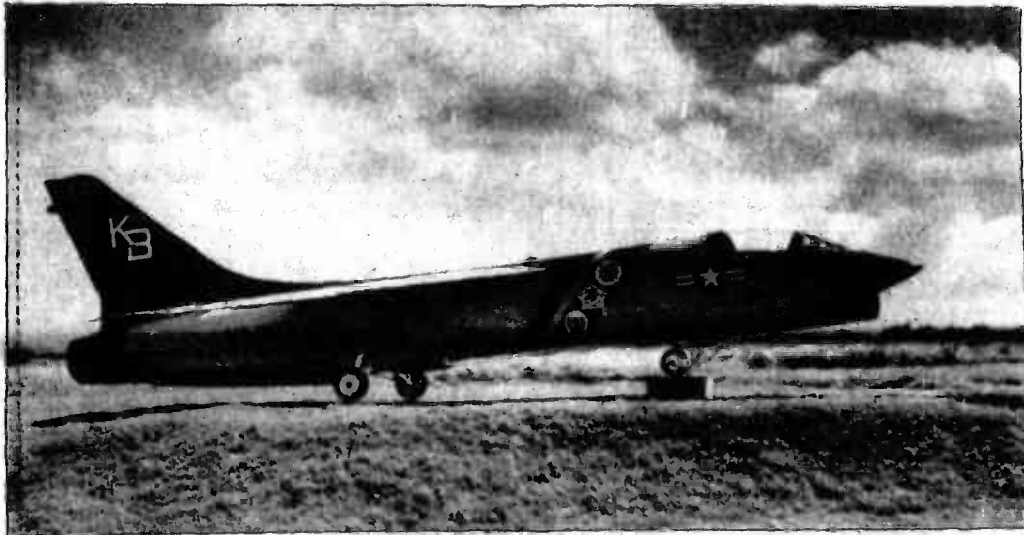
His journey was nearly over. He was then ready to begin the slow trek down the streets of the air station. With the help of many hardworking friends, both metallic and human from the Facilities Department, the Crash and Fire Rescue Section, Station Operations and Maintenance, and the Provost Marshal's Office he made his way slowly but proudly to the H-3 Gate.

He was put up on a pedestal and given proper honors due any hero in a dedication ceremony led by Col Sautter.

Now he is more majestic and will live happily ever after aboard MCAS Kaneohe Bay, Hawaii.



The hands of a surgeon



Mr. Majestic



Reunited and it feels so good



Final lift-off



His Majesty's secret service



Pushed into place

Officer board meets May vice February

WASHINGTON, D.C. — The Fiscal Year 1981 Limited Duty Officer selection board will meet here in May — not in February as first planned — and women chief warrant officers will be able to apply for it.

THOSE TWO changes were revealed in

ALMAR 002/81, which announces this year's LDO program. Until now, the program had been closed by law, to women. According to the ALMAR, the changes were made due to the Defense Officer Personnel Management Act, which will take effect Sept. 15. "The law," the

ALMAR states, "revises many areas of officer management and equalizes the treatment of male and female officers with respect to appointment, promotion, separation and retirement." If the LDO selection board was held in February, however, women would not have

had enough time to apply for it. By moving the board date back, the ALMAR indicates, women now have enough time to apply and those selected will be "eligible for appointment as LDOs when DOPMA becomes effective."

ACCORDING TO

the ALMAR, this year's program will be open to both men and "women chief warrant officers who (achieved more than 20 years active naval service by Jan. 1, 1981." All LDO appointments from the May selection board will take place between Sept. 15 and Sept. 30. Because of the new

selection board date, all chief warrant officers now have until April 15 to submit applications, and those who have already submitted need not reapply.

Complete details on the LDO program are in Marine Corps Bulletin 1040 of July 15, 1980.

Daily Bread

The daily breakfast and weekend/holiday breakfast/brunch menus consist of fresh fruit, assorted hot and dry cereals, eggs to order, omelettes, assorted meats, hash browns, creamed or chipped beef, hot cakes or French toast.

All lunch and dinner menus include assorted beverages, salads, breads and desserts.

The menus for today through Tuesday are:

TODAY — Lunch: soup, tuna casserole, veal loaf, french fries, mushroom gravy, mustard greens, stewed tomatoes.

Dinner: soup, corned beef, pork slices, parsley buttered potatoes, cabbage, fried okra.

TOMORROW — Lunch: Swedish meatballs, liver and onions, peas, vegetable combination, gravy.

Dinner: soup, turkey, gravy, parsley rice, apple dressing, lyonnaise green beans, corn-on-the-cob, cranberry sauce.

FRIDAY — Lunch: soup, lasagna, assorted pizzas, succotash, fried squash.

Dinner: New England clam chowder, steamship round, baked potatoes, green beans, broccoli polonaise.

SATURDAY — Brunch/Dinner: soup, ham steak, mashed potatoes, gravy, peas and carrots, cauliflower au gratin.

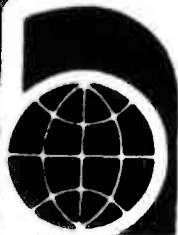
SUNDAY — Brunch/Dinner: tomato soup, chicken cacciatore, spaghetti, broccoli polonaise, peas.

MONDAY — Lunch: soup, stuffed pork chops, scalloped sweet potatoes, gravy, cauliflower au gratin, peas, applesauce.

Dinner: fried chicken, rissole potatoes, mixed vegetables, beets.

TUESDAY — Lunch: soup, Swiss steak, baked potatoes, lima beans, carrots.

Dinner: soup, breaded veal cutlets, buttered noodles, gravy, spinach, peas.



AIKAHI WORLD TRAVEL, INC.

Now located on the ground floor
in Aikahi Park Shopping Center.

— Offering —

APOLLO

Windward Oahu's Most Efficient
Computerized Travel Service
Featuring on the spot:

AVAILABILITY • TICKETING • CONFIRMATION
AND MILITARY FARES WHEN AVAILABLE

We'll service all your travel needs
at no extra charge.

254-3514

Mon.-Fri. 9-5, Sat. 9-1

HEADACHES & FACIAL PAIN

can be caused by improper
alignment of your teeth
and jaw.



Kailua Professional Ctr.
Suite 503

WINDWARD DENTAL GROUP INC.
Lee Hardy, D.D.S. 261-4694

Hairstyling
for men
and women
Stylists:
Phil Ventura
Sharon Pearson
Paul Joseph
Verna Soga
Keala Dolera
Meg Lenz
Roy Trillo
Sara Mae Junta
Debi Clay
Candy Maynes

Manicures
Juliette Nails &
Lady Fingers
Acrylic Nails
Manicurist:
Lori Maddams

Susan Beers' Salon

116-C Hekili St.
Kailua
261-8571

REDKEN

DO-IT-YOURSELF SAVE

Kitchen Cabinets & Bathroom Vanities



This beautiful and tastefully designed kitchen graces the home of Colonel and Mrs. Lloyd Chapman, retired, of Poipu Drive. Featured are the walnut toned Alder Brook cabinets by Diamond, coffee appliances, and decorator tile counter top. Jan Jay Co. supplied the cabinets and tile. The installation was done entirely by Col. and Mrs. Chapman, both agreeing they had a "ball" in their first attempt at "Do It Yourself." The Chapman home is further enhanced by a tile foyer and plant room overlooking Moanalua Bay.

In the comfort of your home let JANJAY CO. show you what they have to offer at Prices That Will Amaze You! Call Now.

Locally owned and operated
JANJAY CO.

235-4758

Ceramic Tile • Formica • Cultured Marble • Appliances



Help

Save Our Natural Resources

We BUY

- newspaper ● office paper
- aluminum cans

call our new number

841-0965

**HAWAII RECYCLING
SERVICE CENTER**

... In Hawaii Since 1976 ...

20% Off All
Salon Services

with this ad
(new clients only please)



JOICE
HAIR CARE PRODUCTS CENTER

international haircutters

Koko Marina
Second Floor, Waterfront Village
395-7551

Aikahi Park
Kailua
254-1586

MONDAY FRIDAY 9-9 SATURDAY 9-5 SUNDAY 10-4 (Koko Marina only)

FAN SALE

CHECK THESE FEATURES:

- ★ TWO SPEED 115-200 R.P.M.
- ★ ALL METAL MOTOR HOUSING
- ★ SOLID STEEL DRIVE SHAFT
- ★ DIRECT DRIVE MOTOR, U.I. APPROVED
- ★ 5 YEAR WARRANTY
- ★ WIDE VARIETY OF LIGHT KITS AVAILABLE

LOWEST
PRICES IN
HAWAII

WE HAVE ONE OF
HAWAII'S LARGEST
CEILING FAN
DISPLAYS

Hurry, Quantities Are Limited
At These Super Low Prices
One Week Only, Offer Expires
2/25/81 p.m.

BRING THIS AD
IN FOR
AN ADDITIONAL
DISCOUNT
OFF YOUR FAN!

Super Savings

On Hawaii's Fastest Selling Fans



Pacific Surplus & Distributors
1247 KAILUA RD. (in the new 7-Eleven Complex)
MON.-SAT. 10AM-6 PM. SUN. 11AM-5 PM

CALL NOW
262-8131

Cinema

W Th F S S M T
FAMILY THEATER
 7:15 p.m. 1 2 3 4 5 6 7
CAMP SMITH
 7 p.m. 3 5 5 6 7 8 9

1. **A PLEASURE DOING BUSINESS** — Conrad Bain, John Byner, R, comedy. Three middle-aged businessmen scheme to climb out of their economic rut.
2. **THE FRISCO KID** — Gene Wilder, Harrison Ford, PG, comedy. In 1850, a Polish rabbi sails to America to perform a wedding, gets lost in New York and heads west.
3. **THE FIRST DEADLY SIN** — Frank Sinatra, Faye Dunaway, R, action drama. Frank Sinatra is a police officer within weeks of retirement who catches on to a series of arbitrary murders.
4. **EVERY GIRL SHOULD HAVE ONE** — Herb Vigran, Zsa Zsa Gabor, PG, comedy. When honesty, fair play and integrity meet a stolen

- million-dollar diamond, it becomes clear that every girl should have one.
5. **ABBA THE MOVIE** — Robert Hughes, Tom Olivier, G, musical. Abba entertains amidst a story of a disc jockey getting his first big interview.
 6. **A FORCE OF ONE** — Jennifer O'Neill, Chuck Norris, PG, drama. A team of undercover narcotics agents investigation mysteriously goes haywire and the squad gets eliminated one by one.
 7. **THE FORMULA** — George C. Scott, Marthe Keller, R, suspense, drama. Vital part of a formula disappeared at the end of World War II.
 8. **THE EVICTORS** — Vic Morrow, Michael Parks, PG, drama. A young family attempt to buy a house in a small inhospitable town.
 9. **LAST EMBRACE** — Roy Scheider, Janet Margolin, R, suspense drama. A government agent suffers a breakdown when his wife is killed in an ambush meant for him.
 10. **IT'S MY TURN** — Jill Clayburgh, Michael Douglas, R, romantic comedy. Clayburgh is an offbeat intelligent mathematics professor.

UNCONTESTED DIVORCES

\$150 legal fee plus \$30 court cost
 Also Handling:
 • child custody • wills
 • criminal defense • probate
 • personal injury • bankruptcy
 • small businesses
Barbara Lee Melvin
 experienced attorney
 U.S. Nat. Delegate, Nat. Assoc. of Women Lawyers
 Evenings by appointment
Call 521-7496
 Kawaiaha Plaza Suite 612

Kaneohe Travel Agency
 Ph. 247-2113
SAMOA — TONGA — FIJI
 Enchanting Paradise — Charm of Polynesia
 The Friendly Isles
 Round Trip Airfare 325.00
 Stay Minimum 9 Days — Maximum: 23 Days
 — No Service Charge —
 Windward City Mon. thru Sat. ATC & IATA
 Shopping Ctr. 9-5 p.m. LIC. #XTRA0053

CITY OPTICIANS In Appreciation to the
 Windward Community for your
 patronage, we are offering you this
Gift Certificate
VALUE \$1500
 (Bring this ad with you, it's worth \$1500)
 1 CERTIFICATE PER PURCHASE
 Certificates also available in our store.
REDEEMABLE ON RX GLASSES ONLY AT
CITY OPTICIANS
 315 ULUNI ST., KAILUA, HAWAII 261-0220
 THIS CERTIFICATE SUPERCEDES ANY
 DISCOUNTS IN EFFECT
 *Offer Good Feb. 1 to April 30

SHOP KAILUA

Lynn's Interiors
 305 Uluniu St.
 "Under the yellow
 awnings"
 262-6612
PRE-INVENTORY SALE
25% OFF
 Our
 Entire Stock of Gifts, Lamps,
 Accessories, Fine Furniture
 Baskets & Pillows

COUPON
SNIPPET, INC.
 Hair Care Salon
 107 Hekili St.
 In Kailua 261-0888
 CALL NOW FOR
 YOUR
 APPOINTMENT
25% OFF All Salon
 Services
\$5.00 Haircuts For
 Males & Females
 18 Yrs. & Younger
 OPEN:
 Mon.-Sat. 9 a.m. to 5 p.m.
 Tues., Thurs., Fri. 9 a.m. to 9 p.m.
 Offer Good Until April 20, 1981
COUPON

FORMAL WEAR
 FOR SUMMER WEDDINGS
 ALL
 ACCESSORIES
 INCLUDING
 SHOES
 DARK BUSINESS
 SUITS FOR
 FUNERALS
 SEMI-FORMAL BLAZERS
 Sizes 36 SHORT 42 LONG
 WHITE PANTS
 PUAPUA MOA SHIRT
 RED SASH
 WHITE SHOES
 CUFF LINK SETS
 WHITE RUFFLES
 SHIRTS
Charlie's SPORTSWEAR
 13 Oneawa St. 262-8575
 Across Coin Power

KAILUA CANDY
The Kailua Candy Company
 on Oahu
 The Windward Side's only candy store
 — features —
 The Following Coffees (Bean or Ground)
 Kona Regular Ethiopian Harrar
 Kona Dark Roast Dutch Chocolate
 Columbian Decaffeinated Cafe Cinnamon
 Columbian Supreme *Mocha
 Mexican Coatepec *New Orleans w/Chicory
 Java Arabica *Chicory
\$5.60
 *on order
 — located at —
 418 C. KUULEI ROAD • KAILUA
 PHONE: 262-2100
 Next to McDonalds in the Municipal Parking Lot
 (Where Pizza Pies used to be)

PROCTER-SILEX
 2 SLICE TOASTER
 T-220AL
 REG. \$18.88
 SALE \$15.88
ELECTRIC BILL
 GOT YOU DOWN?
 YORKVILLE ENERGY-SAVER FLUORESCENT BULB -
 10,000 HOURS AVERAGE LIFE - FITS STANDARD
 LIGHT SOCKET.
 REG. \$14.09
 SALE \$10.09
 SAVE \$4.00
SURE
 ROLL-ON
 DEODORANT
 2 1/2 OZ.
 REG. \$2.19
 SALE \$1.59
ASSORTED
 SCREW
 DRIVERS
 YOUR CHOICE
 PHILLIPS OR
 REGULAR
 REG. \$1.17
 SALE 79¢
NICHOLSON
 HAND SAW
 #150
 REG. \$10.30
 SALE \$6.30
 SAVE \$4
PRINTED
 CHAIR PADS
 REG. \$4.99
 SALE \$3.49
D-CON AUTOMATIC
 INSECT ROOM FOGGER
 TWIN-PAK
 REG. \$4.69
 SALE \$3.79
CAROL DROP-LITE
 25' WIRE
 #18/3 SJT
 REG. \$9.90
 SALE \$5.90
 SAVE \$4
WESTAPE
 ELECTRICAL
 TAPE
 3/4" x 80'
 REG. \$1.51
 SALE 79¢
SEE OUR BUILDING MATERIAL ORDER DESK
DELIVERY IN 24 HRS. AT LOW LOW PRICES!

HOME IMPROVEMENT SALE
 Custom Made
 Draperies including
 Installation
20% OFF
 All in Stock
 Carpeting
 Many colors to
 choose from up to
60% OFF
 Ceramic Tile and Sheet Vinyl
 available at super low prices
 CALL NOW
 Offer Expires 3/4/81
MAHALO
 John Farnell Jr.
CARPETS
 OF
KAILUA
 155 Hamakua Dr.
 Kailua
 261-1808

FAN CLEARANCE SALE
 While they last, our entire inventory of fans are on
 sale. Choose from the best selection anywhere on
 American made quality fans.
 Check These Features
 ★ Five year warranty
 ★ Two speed control 115-200 R.P.M.
 ★ Real wood blades
 ★ All metal construction
 ★ All blades and lights are interchangeable, design
 the fan of your choice.
HURRY.
1 WEEK ONLY
PACIFIC SURPLUS & DISTRIBUTORS
 1247 Kailua Rd.
 (In the new 7-Eleven Complex) 262-8131
 Mon.-Sat. 10-6 pm
 Wed. till 8 pm
LOWEST PRICES IN HAWAII!
HOIDE TIME
 CEILING FANS



"If it don't fit, don't force it!"



"Set that baby right down here."



"Head 'em up... Move 'em out!"

Aweigh we go!

Dear Gunny,

This is to let you know that, contrary to popular belief, I am not in an unauthorized absence status. In fact, you'll be thrilled to know that I am presently aboard the USS Belleau Wood (LHA-3) concentrating on media coverage for a routine training operation being conducted.

As you can see from the photos accompanying this letter, some elements of the 31st Marine Amphibious Unit have gone through many hours of preparation for this training exercise, and subsequently, their upcoming deployment.

But the photo's only indicate the support that the basic infantryman is getting. They don't show the hours of arduous, exhausting

and sometimes boring training that the Marine infantrymen have gone through just to prepare for this operation.

For further clarification describing preparational procedures, the photos illustrate Leathernecks working Wednesday and Thursday on embarking cargo and vehicles aboard the vessel.

In addition to cargo and vehicles being loaded, Marines from Marine Medium Helicopter Squadron-165 docked several aircraft on the ship's flight deck. They must have practiced for hours; they looked great coming in. This phase of embarkation was conducted Thursday.

Friday, the main portion of the battalion landing team boarded

the ship and we set sail Saturday for its training destination.

A general consensus about the ship is that it is comparable to a luxury liner. However, I will not be misguided as to the main purpose of my visit aboard this ship. Rest assured that complete and professional coverage of the Marines involved in the exercise will be presented upon my return.

Sincerely,
Sgt Phillip Williams
Staff Writer, in absentia

P.S. The photos were taken by SSG Joseph Blackburn and Sgt Moses Reynolds, who jumped ship before we set sail.

the law offices of
Thomas J. Carney, Jr.
attorney-at-law
concentrating in:
•personal injury
(auto accidents, etc.)
•family law (divorce, etc.)
•business
•real estate
•criminal defense
suite 809 333 queen st.
melim building ph. 523-5040
initial consultation free

Washington, D.C. Bound?

IF SO...
YOU ARE INVITED TO THE
HOLIDAY INN
Honolulu Airport
(Ekahi Room)
3401 North Nimitz Highway Honolulu

FOR AN INDIVIDUALIZED COUNSELING PROGRAM INCLUDING HOUSING DISPLAYS AND INFORMATION ON COMMUNITIES, SCHOOLS, FINANCING AND OTHER ASPECTS OF LIVING IN THE WASHINGTON, D.C. AREA.

REPRESENTATIVES OF TOWN & COUNTRY REALTORS*, THE NATIONAL CAPITAL AREA'S LEADING REAL ESTATE COMPANY, WILL BE PRESENT TO ANSWER YOUR SPECIFIC QUESTIONS.



AIRPORT HOLIDAY INN
FEBRUARY 12th THRU 22nd
STARTING AT 9:00 A.M. DAILY
PHONE: 836-0661 or 839-5668
(APPOINTMENTS SUGGESTED)

Your pay available
anywhere you are,
anytime you want it,
with Direct Deposit

MAINLINER and TRAVEL HOLIDAY Award Winners

L'Auberge

French Cuisine

Superb Dining in a
Charming Country
French Manner

RESERVATIONS
AFTER 2 P.M.

Open:
Wed. thru Sun.
6 p.m. to 10 p.m.

117 HEKILI
STREET,
KAILUA

262-4835

Your Hosts:
Marcel & Elvi Baltzer



BURGLAR ALARM

Professionally Installed

\$600⁰⁰

Commercial Quality,
Powerful, Effective and Guaranteed.

531-7415

Comes Security Alarms

Since 1955
Contr. Lic. #C-10243. Bonded-Insured.

Hawaiian Electric calls THE HEAT PUMP The Appliance of the Future

Heat Pumps are guaranteed

★ To Save up to 66-71% of your water heating bill
(which accounts for 40-60% of your electric bill)
★ at 1/3 the cost of most solar systems

★ install in a few hours
★ portable for homes and condos

Free Fluorescent Circle
Light with low-key in-home
demonstration, no obligation.

Call 235-8621 or 531-8474

H. P. Energy Ltd.

46-020 Alaloa St., #202
Kaneohe, Hawaii

CONSOLIDATED THEATRES

REVOLUTIONARY CINE-FI SOUND AT THE KAM DRIVE-IN

YOUR AM CAR RADIO IS YOUR SPEAKER! (IF NO
CAR RADIO, WITH IGNITION ACCESSORY POSITION
BRING YOUR OWN AM PORTABLE)

HAWAII'S OLDEST AND LARGEST!
KAM D.I. SUPER SWAP MEET

PLUS: NOW EVERY THURSDAY!
Opp. Pearlridge 1, 2, 3, 4, 5, 6, 7, 8, 9, 10, 11, 12, 13, 14, 15, 16, 17, 18, 19, 20, 21, 22, 23, 24, 25, 26, 27, 28, 29, 30, 31, 32, 33, 34, 35, 36, 37, 38, 39, 40, 41, 42, 43, 44, 45, 46, 47, 48, 49, 50, 51, 52, 53, 54, 55, 56, 57, 58, 59, 60, 61, 62, 63, 64, 65, 66, 67, 68, 69, 70, 71, 72, 73, 74, 75, 76, 77, 78, 79, 80, 81, 82, 83, 84, 85, 86, 87, 88, 89, 90, 91, 92, 93, 94, 95, 96, 97, 98, 99, 100, 101, 102, 103, 104, 105, 106, 107, 108, 109, 110, 111, 112, 113, 114, 115, 116, 117, 118, 119, 120, 121, 122, 123, 124, 125, 126, 127, 128, 129, 130, 131, 132, 133, 134, 135, 136, 137, 138, 139, 140, 141, 142, 143, 144, 145, 146, 147, 148, 149, 150, 151, 152, 153, 154, 155, 156, 157, 158, 159, 160, 161, 162, 163, 164, 165, 166, 167, 168, 169, 170, 171, 172, 173, 174, 175, 176, 177, 178, 179, 180, 181, 182, 183, 184, 185, 186, 187, 188, 189, 190, 191, 192, 193, 194, 195, 196, 197, 198, 199, 200, 201, 202, 203, 204, 205, 206, 207, 208, 209, 210, 211, 212, 213, 214, 215, 216, 217, 218, 219, 220, 221, 222, 223, 224, 225, 226, 227, 228, 229, 230, 231, 232, 233, 234, 235, 236, 237, 238, 239, 240, 241, 242, 243, 244, 245, 246, 247, 248, 249, 250, 251, 252, 253, 254, 255, 256, 257, 258, 259, 260, 261, 262, 263, 264, 265, 266, 267, 268, 269, 270, 271, 272, 273, 274, 275, 276, 277, 278, 279, 280, 281, 282, 283, 284, 285, 286, 287, 288, 289, 290, 291, 292, 293, 294, 295, 296, 297, 298, 299, 300, 301, 302, 303, 304, 305, 306, 307, 308, 309, 310, 311, 312, 313, 314, 315, 316, 317, 318, 319, 320, 321, 322, 323, 324, 325, 326, 327, 328, 329, 330, 331, 332, 333, 334, 335, 336, 337, 338, 339, 340, 341, 342, 343, 344, 345, 346, 347, 348, 349, 350, 351, 352, 353, 354, 355, 356, 357, 358, 359, 360, 361, 362, 363, 364, 365, 366, 367, 368, 369, 370, 371, 372, 373, 374, 375, 376, 377, 378, 379, 380, 381, 382, 383, 384, 385, 386, 387, 388, 389, 390, 391, 392, 393, 394, 395, 396, 397, 398, 399, 400, 401, 402, 403, 404, 405, 406, 407, 408, 409, 410, 411, 412, 413, 414, 415, 416, 417, 418, 419, 420, 421, 422, 423, 424, 425, 426, 427, 428, 429, 430, 431, 432, 433, 434, 435, 436, 437, 438, 439, 440, 441, 442, 443, 444, 445, 446, 447, 448, 449, 450, 451, 452, 453, 454, 455, 456, 457, 458, 459, 460, 461, 462, 463, 464, 465, 466, 467, 468, 469, 470, 471, 472, 473, 474, 475, 476, 477, 478, 479, 480, 481, 482, 483, 484, 485, 486, 487, 488, 489, 490, 491, 492, 493, 494, 495, 496, 497, 498, 499, 500, 501, 502, 503, 504, 505, 506, 507, 508, 509, 510, 511, 512, 513, 514, 515, 516, 517, 518, 519, 520, 521, 522, 523, 524, 525, 526, 527, 528, 529, 530, 531, 532, 533, 534, 535, 536, 537, 538, 539, 540, 541, 542, 543, 544, 545, 546, 547, 548, 549, 550, 551, 552, 553, 554, 555, 556, 557, 558, 559, 560, 561, 562, 563, 564, 565, 566, 567, 568, 569, 570, 571, 572, 573, 574, 575, 576, 577, 578, 579, 580, 581, 582, 583, 584, 585, 586, 587, 588, 589, 590, 591, 592, 593, 594, 595, 596, 597, 598, 599, 600, 601, 602, 603, 604, 605, 606, 607, 608, 609, 610, 611, 612, 613, 614, 615, 616, 617, 618, 619, 620, 621, 622, 623, 624, 625, 626, 627, 628, 629, 630, 631, 632, 633, 634, 635, 636, 637, 638, 639, 640, 641, 642, 643, 644, 645, 646, 647, 648, 649, 650, 651, 652, 653, 654, 655, 656, 657, 658, 659, 660, 661, 662, 663, 664, 665, 666, 667, 668, 669, 670, 671, 672, 673, 674, 675, 676, 677, 678, 679, 680, 681, 682, 683, 684, 685, 686, 687, 688, 689, 690, 691, 692, 693, 694, 695, 696, 697, 698, 699, 700, 701, 702, 703, 704, 705, 706, 707, 708, 709, 710, 711, 712, 713, 714, 715, 716, 717, 718, 719, 720, 721, 722, 723, 724, 725, 726, 727, 728, 729, 730, 731, 732, 733, 734, 735, 736, 737, 738, 739, 740, 741, 742, 743, 744, 745, 746, 747, 748, 749, 750, 751, 752, 753, 754, 755, 756, 757, 758, 759, 760, 761, 762, 763, 764, 765, 766, 767, 768, 769, 770, 771, 772, 773, 774, 775, 776, 777, 778, 779, 780, 781, 782, 783, 784, 785, 786, 787, 788, 789, 790, 791, 792, 793, 794, 795, 796, 797, 798, 799, 800, 801, 802, 803, 804, 805, 806, 807, 808, 809, 810, 811, 812, 813, 814, 815, 816, 817, 818, 819, 820, 821, 822, 823, 824, 825, 826, 827, 828, 829, 830, 831, 832, 833, 834, 835, 836, 837, 838, 839, 840, 841, 842, 843, 844, 845, 846, 847, 848, 849, 850, 851, 852, 853, 854, 855, 856, 857, 858, 859, 860, 861, 862, 863, 864, 865, 866, 867, 868, 869, 870, 871, 872, 873, 874, 875, 876, 877, 878, 879, 880, 881, 882, 883, 884, 885, 886, 887, 888, 889, 890, 891, 892, 893, 894, 895, 896, 897, 898, 899, 900, 901, 902, 903, 904, 905, 906, 907, 908, 909, 910, 911, 912, 913, 914, 915, 916, 917, 918, 919, 920, 921, 922, 923, 924, 925, 926, 927, 928, 929, 930, 931, 932, 933, 934, 935, 936, 937, 938, 939, 940, 941, 942, 943, 944, 945, 946, 947, 948, 949, 950, 951, 952, 953, 954, 955, 956, 957, 958, 959, 960, 961, 962, 963, 964, 965, 966, 967, 968, 969, 970, 971, 972, 973, 974, 975, 976, 977, 978, 979, 980, 981, 982, 983, 984, 985, 986, 987, 988, 989, 990, 991, 992, 993, 994, 995, 996, 997, 998, 999, 1000, 1001, 1002, 1003, 1004, 1005, 1006, 1007, 1008, 1009, 1010, 1011, 1012, 1013, 1014, 1015, 1016, 1017, 1018, 1019, 1020, 1021, 1022, 1023, 1024, 1025, 1026, 1027, 1028, 1029, 1030, 1031, 1032, 1033, 1034, 1035, 1036, 1037, 1038, 1039, 1040, 1041, 1042, 1043, 1044, 1045, 1046, 1047, 1048, 1049, 1050, 1051, 1052, 1053, 1054, 1055, 1056, 1057, 1058, 1059, 1060, 1061, 1062, 1063, 1064, 1065, 1066, 1067, 1068, 1069, 1070, 1071, 1072, 1073, 1074, 1075, 1076, 1077, 1078, 1079, 1080, 1081, 1082, 1083, 1084, 1085, 1086, 1087, 1088, 1089, 1090, 1091, 1092, 1093, 1094, 1095, 1096, 1097, 1098, 1099, 1100, 1101, 1102, 1103, 1104, 1105, 1106, 1107, 1108, 1109, 1110, 1111, 1112, 1113, 1114, 1115, 1116, 1117, 1118, 1119, 1120, 1121, 1122, 1123, 1124, 1125, 1126, 1127, 1128, 1129, 1130, 1131, 1132, 1133, 1134, 1135, 1136, 1137, 1138, 1139, 1140, 1141, 1142, 1143, 1144, 1145, 1146, 1147, 1148, 1149, 1150, 1151, 1152, 1153, 1154, 1155, 1156, 1157, 1158, 1159, 1160, 1161, 1162, 1163, 1164, 1165, 1166, 1167, 1168, 1169, 1170, 1171, 1172, 1173, 1174, 1175, 1176, 1177, 1178, 1179, 1180, 1181, 1182, 1183, 1184, 1185, 1186, 1187, 1188, 1189, 1190, 1191, 1192, 1193, 1194, 1195, 1196, 1197, 1198, 1199, 1200, 1201, 1202, 1203, 1204, 1205, 1206, 1207, 1208, 1209, 1210, 1211, 1212, 1213, 1214, 1215, 1216, 1217, 1218, 1219, 1220, 1221, 1222, 1223, 1224, 1225, 1226, 1227, 1228, 1229, 1230, 1231, 1232, 1233, 1234, 1235, 1236, 1237, 1238, 1239, 1240, 1241, 1242, 1243, 1244, 1245, 1246, 1247, 1248, 1249, 1250, 1251, 1252, 1253, 1254, 1255, 1256, 1257, 1258, 1259, 1260, 1261, 1262, 1263, 1264, 1265, 1266, 1267, 1268, 1269, 1270, 1271, 1272, 1273, 1274, 1275, 1276, 1277, 1278, 1279, 1280, 1281, 1282, 1283, 1284, 1285, 1286, 1287, 1288, 1289, 1290, 1291, 1292, 1293, 1294, 1295, 1296, 1297, 1298, 1299, 1300, 1301, 1302, 1303, 1304, 1305, 1306, 1307, 1308, 1309, 1310, 1311, 1312, 1313, 1314, 1315, 1316, 1317, 1318, 1319, 1320, 1321, 1322, 1323, 1324, 1325, 1326, 1327, 1328, 1329, 1330, 1331, 1332, 1333, 1334, 1335, 1336, 1337, 1338, 1339, 1340, 1341, 1342, 1343, 1344, 1345, 1346, 1347, 1348, 1349, 1350, 1351, 1352, 1353, 1354, 1355, 1356, 1357, 1358, 1359, 1360, 1361, 1362, 1363, 1364, 1365, 1366, 1367, 1368, 1369, 1370, 1371, 1372, 1373, 1374, 1375, 1376, 1377, 1378, 1379, 1380, 1381, 1382, 1383, 1384, 1385, 1386, 1387, 1388, 1389, 1390, 1391, 1392, 1393, 1394, 1395, 1396, 1397, 1398, 1399, 1400, 1401, 1402, 1403, 1404, 1405, 1406, 1407, 1408, 1409, 1410, 1411, 1412, 1413, 1414, 1415, 1416, 1417, 1418, 1419, 1420, 1421, 1422, 1423, 1424, 1425, 1426, 1427, 1428, 1429, 1430, 1431, 1432, 1433, 1434, 1435, 1436, 1437, 1438, 1439, 1440, 1441, 1442, 1443, 1444, 1445, 1446, 1447, 1448, 1449, 1450, 1451, 1452, 1453, 1454, 1455, 1456, 1457, 1458, 1459, 1460, 1461, 1462, 1463, 1464, 1465, 1466, 1467, 1468, 1469, 1470, 1471, 1472, 1473, 1474, 1475, 1476, 1477, 1478, 1479, 1480, 1481, 1482, 1483, 1484, 1485, 1486, 1487, 1488, 1489, 1490, 1491, 1492, 1493, 1494, 1495, 1496, 1497, 1498, 1499, 1500, 1501, 1502, 1503, 1504, 1505, 1506, 1507, 1508, 1509, 1510, 1511, 1512, 1513, 1514, 1515, 1516, 1517, 1518, 1519, 1520, 1521, 1522, 1523, 1524, 1525, 1526, 1527, 1528, 1529, 1530, 1531, 1532, 1533, 1534, 1535, 1536, 1537, 1538, 1539, 1540, 1541, 1542, 1543, 1544, 1545, 1546, 1547, 1548, 1549, 1550, 1551, 1552, 1553, 1554, 1555, 1556, 1557, 1558, 1559, 1560, 1561, 1562, 1563, 1564, 1565, 1566, 1567, 1568, 1569, 1570, 1571, 1572, 1573, 1574, 1575, 1576, 1577, 1578, 1579, 1580, 1581, 1582, 1583, 1584, 1585, 1586, 1587, 1588, 1589, 1590, 1591, 1592, 1593, 1594, 1595, 1596, 1597, 1598, 1599, 1600, 1601, 1602, 1603, 1604, 1605, 1606, 1607, 1608, 1609, 1610, 1611, 1612, 1613, 1614, 1615, 1616, 1617, 1618, 1619, 1620, 1621, 1622, 1623, 1624, 1625, 1626, 1627, 1628, 1629, 1630, 1631, 1632, 1633, 1634, 1635, 1636, 1637, 1638, 1639, 1640, 1641, 1642, 1643, 1644, 1645, 1646, 1647, 1648, 1649, 1650, 1651, 1652, 1653, 1654, 1655, 1656, 1657, 1658, 1659, 1660, 1661, 1662, 1663, 1664, 1665, 1666, 1667, 1668, 1669, 1670, 1671, 1672, 1673, 1674, 1675, 1676, 1677, 1678, 1679, 1

Localmotion

K-BAY OFFICERS' CLUB

TODAY — Lunch in the Pacific Room from 11 a.m. till 1 p.m. features specials, hot carved sandwiches, soup and salads. Mongolian barbecue on the Lower Lanai from 6 till 8:30 p.m.

THURSDAY — Lunch in the Pacific Room from 11 a.m. till 1 p.m. Beefsteak's Night from 6 till 8:30 p.m. featuring steamship round, a seafood item, rice or potatoes, vegetable and a salad bar.

FRIDAY — Lunch in the Pacific Room from 11 a.m. till 1 p.m. Happy Hour in the Tapa Bar from 4:30 till 6:30 p.m. Mongolian barbecue on the Lower Lanai from 6 till 9 p.m. "Free Style" plays from 8:30 till midnight in the Tapa Bar.

SATURDAY — Candlelight Dining in the Pacific Room from 6 till 8:30 p.m.

SUNDAY — Champagne Brunch in the Pacific Room 10 a.m. till 1 p.m. with a wide variety of breakfast specials, with a complimentary glass of

champagne. In the evening, beef and crab from 6 till 8:30 p.m.

MONDAY — Lunch in the Pacific Room from 11 a.m. till 1 p.m. Join us Monday thru Friday for a variety of specials, hot carved sandwiches, soup and salads. Monday evening the Club is closed.

TUESDAY — Lunch in the Pacific Room from 11 a.m. till 1 p.m. Tuesday evening the dining room is closed. The Tapa Bar opens from 4 till 10 p.m. Happy Hour from 4:30 till 6:30 p.m. Sandwiches and chili available at the bar.

WINDWARD ENLISTED CLUB

TODAY — Club opens from 11 a.m. till 1 p.m. for bar and dining services. The club reopens at 4 p.m. and the dining room is open from 6 till 8:30 p.m. Our new band "The Producers" play from 7:30 till 11:30 p.m. Couples Lounge open to NCOs.

TOMORROW — Club open from 11 a.m. till 1 p.m. for bar and dining services. The club reopens at 4 p.m. and dining room is open from 6 till 8:30

p.m. "The Producers" play from 7:30 till 11:30 p.m. Couples Lounge open to NCOs.

FRIDAY — Club opens at 11 a.m. till 1 p.m. for bar and dining services. The club reopens at 4 p.m. and dining room is open from 6 till 8:30 p.m. "The Producers" play from 8 p.m. till midnight. Couples Lounge open to couples only, at 7 p.m. till midnight.

SATURDAY — Club opens at 1 p.m. till 1 a.m. Dining room opens at 6 p.m. "The Producers" play from 8 p.m. till 12 p.m. The Couples Lounge will feature a "Special Night of Oldies."

SUNDAY — Club opens at 1 p.m. till midnight with dining from 6 till 8:30 p.m.

MONDAY — Bar open from 11 a.m. till 1 p.m. and 4 p.m. till 12:00 p.m. No dining services on Mondays.

TUESDAYS — Club opens from 11 a.m. till 1

p.m. for bar and dining services. The club reopens at 4 p.m. and dining room is open from 6 till 8:30 p.m. for Smorgasbord. Children under 12 \$1.99 Adults \$4.99.

Stay Marine.

BODY DYNAMICS FOR WOMEN

Fun, Music
Today Body Workout
Showers Saunas
Sign Up Before Class

BOQ

MWF 8:15 AM
TTh 7:30 PM
TTh 6:15 PM
Sat. 9 AM Starts March 2

KMCAS

St. John Vianney Parish School

940 Keolu Dr., Enchanted Lakes, Kailua

Now Accepting Registration for the 81-82
School Year Grades K-8

Saturday Feb. 21, 1981 9:00-11:30
Testing for grades 1-8 at 10:00

PHONE 261-4651

\$5.00 Registration Fee

* Please bring Birth Certificate, Baptismal &
Confirmation Certificate, if applicable. 1st
semester report card (Jan. 81)

St. John Vianney Catholic School is a non-discriminatory
educational institution and employer.



Orson's
QUALITY SEAFOOD
Ward Warehouse

the
Wayland Way

To Get Your Degree
with a
B.S.O.E.

For more
information
Call
595-2951
2429 Pali Hwy.
A Fully Accredited Equal Opportunity Institution

BERNINA

NEW
LOCATION
SALE

50% off

Factory
Suggested
Retail of **\$650**

NEW
LOCATION
SALE

- ★ Demo Model
- ★ Exclusive 25 Year
Written Warranty
- ★ Open Arm
- ★ Monograms

NOTE THESE FEATURES:



MODEL 800

—PLUS—

- ★ Self Adjusting
Tension
- ★ Buttonholes
- ★ Only **\$325⁰⁰**

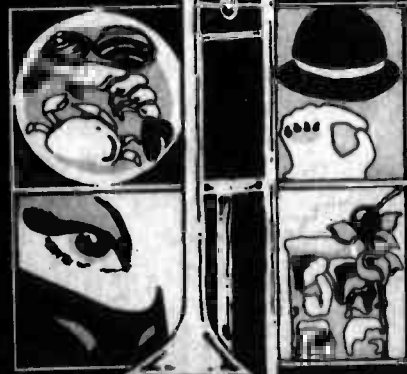
Offer Expires 2/25/81 p.m.
—Murry, Quantities Limited—

262-8131

Pacific Surplus
& Distributors

1247 Kailua Rd. (New 7-Eleven Complex)
Mon-Sat. 10:00-6:00 p.m., Wed. till 8 p.m.

MARDI GRAS!!



Move Over
New Orleans.

Hale Koa's Banyan Tree Room
turns into a Bourbon Street Mardi
Gras extravaganza February 27 &
28. Don your wildest costume and
join fellow merry-makers for the
dazzling sounds of Ken Alford and
his "Discoards".

Join in the pomp and ceremony
of the Mardi Gras royalty coronation

tion and feast to your
hearts content on deli-
cious French Creole
cooking and bubbling
spirits. But don't let the
spirits move you too far
away, because cash prizes
will be given for the
best costumes!

Admission is \$3.00, with food
and drink items purchased separately. Tickets are on sale now at
the Hale Koa Activities Desk and
all Military ticket outlets.



the Mexican Gardens Restaurant

Kaneohe Shopping Center
(Between Cornet and Times)



Mexican Food & Margaritas
The Best of Combinations

Banquet Facilities
Available

Monday thru Saturday 11 a.m.-10 p.m.

Sunday 5-10 p.m.

Ph. 235-4141

Los Arcos

Featuring Gourmet Foods
From Mexico City

Dinner Suggestions \$6.75 & up

- Snails
- Raw Fish
- Soups
- Salads
- Steaks
- Chicken
- Fish
- Sausages



Also join us for our
Executive Lunches
which are light and delicious.
From \$3.95 and up.

Lunch Mon.-Fri. 11:30 a.m.-2 p.m.
Dinner Mon.-Sun. 5:30-10 p.m.

19 Hoolai St.
In Same Building
As Hansen Gallery

For Reservations
247-2537
262-8196

Just a few
Dinner Suggestions
from Rob Roy's
in the center of Kailua

STEAK AND CRAB LEGS

Great combination
of succulent
King Crab and
prime sirloin.

DEEP FRIED SHRIMP

Large shrimp, fried
in a light, crisp
batter.

Korean Style SHORT RIBS

Prime ribs with a
delicious Oriental
sauce.

SHRIMP CURRY

With our own sauce
seasoned to
perfection.
Condiments you'll
love.

... and many more,
all with soup or
tossed green salad,
potatoes or rice, roll
and butter.

Rob Roy's

26 Hoolai Street
Phone 262-6992
Open from 6:30 A.M. daily

.....Step into another world



WINDWARD OAHU'S FINEST KAMAAINA RESTAURANT....

Offers Family Dining
with full menu or buffet

Specializing In
Banquets and Receptions

LUNCH 11:30 - 2:30

DINNER FROM 5:30

TUESDAYS THRU SUNDAYS
(SORRY, CLOSED MONDAYS)

RESERVATIONS— 247-6671
46-336 HAIKU RD., KANE OHE

Iwo Jima

Flag-raising symbolizes valor of fighting forces

by SSgt Dennis Litalien

Six hundred sixty miles from the empire of Japan lies a tiny, volcanic atoll. It's a gloomy place, with few trees and little vegetation. The island's only prominent feature is a 550-foot extinct volcano that rises from its southern tip.

It's difficult to imagine what anyone would want with such a desolate, godforsaken place. Despite its unattractiveness, the island maintains an iron grasp on the psyches of Marines and Americans old enough to recall the events that took place there 35 years ago.

IN ENGLISH its name is translated as "Sulphur Island," in reference to its vast sulphuric deposits. But in Japanese, it is known as Iwo Jima, site of some of the bloodiest fighting in Marine Corps and military history.

By June 1944, American forces in the Pacific Theater were on the move, determinedly smashing the stubborn defenses of the best fighting men Nippon had to offer. The advance had reached a point that the major Japanese islands were subjected to continuous bombing raids by American B-29s, then the most formidable aircraft aloft.

A major portion of the B-29 strike force was homebased at Saipan. This made each bombing run to Japan a long, perilous journey. Each raid carried the possibility that many planes and lives would be lost. Return trips to Saipan would be too lengthy for many of the crippled aircraft to traverse. Thus it became essential that an advance American base be established where B-29s could safely land for repairs and refueling on return flights.

AFTER CAREFUL study it became clear to American planners that Iwo Jima, with its twin, Japanese-controlled airstrips would have to be taken. There was no other choice. Iwo was the gateway that would have to be passed on the road to Japan's downfall.

Japanese planners were also aware of Iwo Jima's importance. LtGen Tadachichi Kuribayashi was selected to prepare and reinforce the Japanese Army forces on Iwo Jima.

Kuribayashi was acutely aware that victory at Iwo Jima would require different tactics on the part of his troops. In the past, Japanese soldiers had always met the amphibious assaults of Marines with fanatical Banzai attacks, trying to drive them back into the sea from whence they came.

THIS DOCTRINE had almost always resulted in huge losses of Japanese troops. With the growing shortage of material and manpower, Kuribayashi could ill afford the loss of life. Therefore he reinforced the island defenses, tunnels, and fortifications. Intricate systems were set up from where the Japanese defenders would pick off the Marines as they began their advance. It became part of the philosophy of each Japanese soldier that he would kill 10 Marines before he died.

Photographs by aircraft and submarines showed American planners how well fortified Iwo Jima was.

A total of 642 blockhouses, pillboxes and gun positions were located on the island. Beginning June 15, 1944, American Army and Navy aircraft began a routine pounding of the island, attempting to soften the defenses before troops were committed to its capture. This bombardment was continued right on through to the actual landing, supplemented by the powerful naval gunfire of U.S. battleships and cruisers.

THE ASSAULT forces for the Iwo Jima operation were the 3d, 4th, and 5th Marine divisions. LtGen Holland "Howling Mad" Smith was overall commanding general of the fighting forces ashore.

D-Day on Iwo Jima was Feb. 19, 1945. At 9:02 a.m., the first wave of Leathernecks hit the beach. For the first 15 minutes all was relatively quiet as the Marines slogged their way through an ankle-high beach of black volcanic ash. Then as the lead battalions began to move beyond the landing areas, the island exploded in a shower of machine gun and rifle fire. Mortar and artillery shells pounded the beaches. The battle for Iwo Jima had begun.

The American plans for capturing Iwo Jima called for the Marines to capture Mount Suribachi and Airfield 1 on the first day. Elements of the 5th Marine Division managed to drive across the island the morning of D-Day, but bypassed enemy fortifications continued their fierce resistance. By early evening, the Marine line stretched from the foot of Suribachi and moved northeastward along the coast, skirting the southern fringe of Airfield 1. They were far short of their goal.

ENEMY defenses proved formidable on all fronts. It was Suribachi, with its excellent vantage point that was the immediate threat to the advancing Marines. It would have to be taken as rapidly as possible.

Marines were constantly under fire from cave positions on Suribachi as they began their gruelling assault. It was decided to send a patrol up the north face of the mountain Feb. 23. 2d Battalion, 28th Marines were assigned to secure the top of the crater. Twice that morning the American flag was raised on the summit. The first was recorded by Lou Lowery, the second, and more famous raising was photographed by war correspondent Joe Rosenthal.

Securing Suribachi was only a small part of the task at hand. Now the drive north continued. Resistance was stiff. Japanese defenders combined with rugged terrain made significant advances next to impossible. Slowly, the Marines gained ground but the cost in terms of manpower was enormous.

THE MORNING of Feb. 24 saw the Japanese defenders pounded by combined Marine artillery, naval bombardment and airstrike assaults. The fighting was bitter, but results of the Leathernecks operations that day were impressive.

The 3d Marine Division, held in reserve to this point, now entered the foray. The battle-hardened veterans of 3d Division found their job rough-going. Gains were small and casualties high. Despite this, they hammered at Kuribayashi's main defensive line.

By the end of February both the 4th and 5th Marine Divisions struggled to capture their objectives. Most formidable was Hill 382, the areas surrounding this sector were heavily fortified and had nicknames like the "Meat Grinder," the "Amphitheater," and "Turkey Knob." It wasn't until March 10 that the tenacious Japanese force defending this area was finally obliterated. It had reached the point where each individual pocket of resistance had to be killed off one at a time. In desperation, the Japanese decided to counter-

attack. It was in vain however, as Marines killed 650 Japanese defenders in one day. The battle was entering its final stage.

THE REMAINDER of the campaign saw the Marines attempting to mop-up by destroying the few remaining pockets of resistance. Flame throwers and 75mm gun tanks were used with grim but necessary effectiveness. The final gasp by Japanese forces happened March 26 as approximately 300 launched a final counterattack in the early morning darkness. As the sun appeared the fight became a hunt, with more than 200 Japanese dying in the assault. It is possible that Kuribayashi may have been among them, unless he had died earlier.

The conquest of Iwo Jima was a glorious, hard-earned victory gained as much by blood as by tenacity. Nearly 6,000 Marines, sailors and soldiers perished and more than 17,000 were wounded. It was a high cost but its importance in the aerial war is demonstrated in that by the end of the war, 2,251 planes, most of them B-29s, carrying 25,000 Americans found refuge at Iwo Jima after bombing forays.

ALTHOUGH 35 years have passed since Adm. Chester Nimitz first uttered these words, they have strengthened, not diminished with the passing of the years, for indeed, as Nimitz said "Uncommon valor was a common virtue."



TOP CASH

Paid For
Gold - Silver - Diamonds
in any form



The
Gold Man

IN KANEOHE

CALL NOW **247-8477**

Wholesale prices to the public for 14K chains, charms, and diamond jewelry. Repair and engraving services.

Breakfast - Lunch - Dinner

- Hotcakes
- French Toast
- Omelettes
- Plate Lunches
- Hamburgers
- Mahimahi
- Chicken
- Seafood
- Teriyaki

NEW HOURS:

Mon.-Sun.
5 am-12 am
Thurs., Fri., Sat.
24 Hours

andy's
drive-in

142 Oneawa St.

CALL FOR LATE
TAKEOUT ORDERS
262-4920

German Car Service

Mercedes Benz
Repair Specialists



Located At
1310 Mookaula Street
Off Waiakamilo • Between King Street
and Dillingham Blvd.
Ph. 841-3019

TACHERA'S UNLIMITED

Name brands in living room, dining room, bedroom furniture, carpeting and bedding.

KING-KOL Bedding Special		
Complete Sets With Heavy Duty Frames, Delivered.		
	Reg.	Your Price
TWIN	219 ⁹⁵	\$149.00
FULL	259 ⁹⁵	\$179.00
QUEEN	329 ⁹⁵	\$249.00
KING	449 ⁹⁵	\$339.00

Quality Furniture and Carpets
At Contract Prices

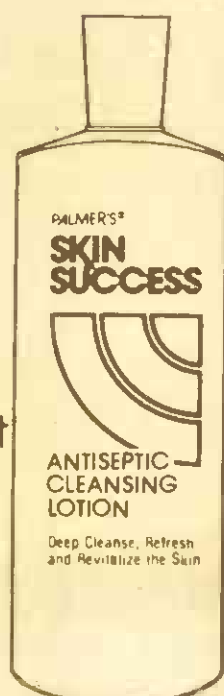
FREE Decorating Consultation

94-148 Leowana St.
Unit D, Waipahu

Call for
an appt. **671-0705**
677-5236

PALMER'S SKIN SUCCESS ANTISEPTIC CLEANSING LOTION

A cool, invigorating, Deep Cleansing Lotion to remove excess oil, dirt and makeup; to tone, stimulate and revitalize the skin.
Available in 4 fl. oz. & 8 fl. oz. Bottles



Available at select stores.

BIB's

Family Restaurant

Invites YOU to Experience
Their Brand New
Menu

Bib's continues to offer the most
reasonably priced meals on
the Windward side.

LUNCH DAILY
11 a.m. to 5 p.m.

BREAKFAST DAILY
7 a.m. to 11 a.m./Sun. 7 a.m. to 1 p.m.

DINNER DAILY
5 p.m. to 9 p.m.

315 Uluniu St.
Kailua Square

Phone
261-8724



SCHEDULED AIRLINES TICKET OFFICE (SATO)

Staffed by full time Airline personnel
To assist in your travel requirements

- Individual leave
- Family travel to the Mainland
- Neighbor Island
- International
- Dependent travel to West-PAC
- Fares
- Flight Information.

Contact SATO for reservations and airline tickets at any one of our three convenient on base locations.

Pearl Harbor	Bldg. 487 - Tele: 422-0571 Office hours - Mon. thru Fri. 0730-1600
Camp Smith	- Bldg. 2D - Tele: 487-1567 Office hours - Mon. thru Fri. 0800-1600
Kaneohe MCAS	- Bldg. 209 - Tele: 254-1564 Office hours - Mon. thru Fri. 0730-1530

LEE'S COCKTAIL LOUNGE & RESTAURANT

"Korean Food A Specialty"

10:00 a.m. to 1:00 a.m.
Happy Hour 4:00 p.m. to 8:00 p.m.

EXOTIC DANCERS! EXOTIC DANCERS!

1111 Bishop Street

Downstairs Corner of Bishop & Hotel.

Lunch Served Monday thru Friday
Take-Out Order Available

Phone **533-3571**

FAMILY CHIROPRACTIC CENTER



Dr. Lawrence J. Connors, M.A., D.C.
CHIROPRACTIC... THE NATURAL SOLUTION
TO HEALTH PROBLEMS

- Headache
- Nervousness
- Neck Pain
- Shoulder-Arm Pain
- Bursitis
- Arthritis
- Backache
- "Pinched Nerves"
- Numbness in Hands or Feet

X-RAY FACILITIES
WORKER'S COMPENSATION
INSURANCE
HEALTH LECTURES
1ST & 3RD SAT. 9:30 A.M.

No Charge For Consultation

KANEOHE BUSINESS &
PROFESSIONAL CENTER
46-005 Kawa St., Suite 201
235-6677

Switch to
Beneficial Income Tax Service

FIND OUT WHAT YOU'RE MISSING.

The IRS allows more than 500 tax deductions, credits and exclusions. Our trained tax preparers know them all, and dig for every one you're entitled to.

We'll prepare your state returns, too, for any states in which you need to file.

Stop missing tax deductions! Call or come in today. No appointment necessary. Most offices open evenings and Saturdays.

Beneficial Income Tax Service

Beneficial Income Tax Service at your nearest Beneficial Finance System office.

HONOLULU - (6 convenient offices)

- 36 North King Street 533-4202
- 1451 South Beretania Street 941-7702
- 3427 Wai'alae Avenue 734-1947
- 1947 North King Street 841-3673
- 1283 Kapiolani Blvd. 536-3565
- 1425 Liliha Street 537-5248

See Telephone White Pages for other offices in area

Look great. Feel great.

And have fun with
Aerobic Dancing.

Aerobic Dancing by Jacki Sorensen is the one exercise program that is actually fun to do. And it works.

Aerobic Dancing exercises are set to today's favorite musical hits. And they're specially designed to take inches off your waist. Firm up your legs and thighs. Make you fit and trim all over. So you look and feel great!

Call now and try your first Class free!



Just call today for a free class schedule and information on how you can attend your first class free. **Aerobic Dancing. Because exercise should be fun.** No other program lets you have fun and makes you look and feel as good as Aerobic Dancing by Jacki Sorensen. So do it now. A fit, trim, you is just a phone call away.

Call
537-3902

Jacki Sorensen, an internationally renowned authority on physical fitness, talk show celebrity, former Clinician for the President's Council on Physical Fitness and author of the best seller Aerobic Dancing.



aerobic dancing
BY JACKI SORENSEN

Corpsmen play the field

by Sgt Lamar Johnson

Wide-eyed passers-by watched in amazement as 1st Marine Brigade medical units held their first Navy Track and Field Meet at Pop Warner Field, Feb. 6.

Medical Aid Station dominated the overall outcome of the meet with a winning score of 25 points. Third Battalion, 3d Marines places second with an overall score of 20, Company "A" 3d

Medical Battalion accumulated 19 points. Navy members from Brigade Service Support Group, Naval Oceanic Systems Center Boathouse and the 21st Dental Company trailed with scores of 14, 7 and 5 respectively. Events in the Navy

Track and Field Meet included 100-yard dash, 440 relay, volleyball match, one-mile race, softball throw, broad jump, high jump and a stretcher race. Refreshments and snacks were in great abundance for the event, and several spectators stayed to

cheer, ridicule and simply stare in amazement.

Each event was refereed under the supervision of Brigade Medical Commander, Capt. Frederick Kavanaugh, brigade surgeon. According to Senior Chief John Parkinson of the MAG Aid Station, "The day was a total success and all the competitive events definitely concluded on a positive note. We will surely work on trying this out on a quarterly basis from now on."



Photo by SSgt Joseph Blackburn

THE LONGEST STRETCH — Sailors race toward the finish line in the stretcher race at Pop Warner Field, during the MCAS

Kaneohe Bay, Brigade Medical Navy Track and Field Meet.



Photo by SSgt Joseph Blackburn

AS THE FOOTBALL TREADS — LCdr Keith Haden, Marine Aircraft Group-24, senior flight surgeon, attempts to throw a football

through a tire at the first MCAS Kaneohe Bay, Brigade Medical Navy Track and Field Meet. The meet was held Feb. 6.

Cash prizes cancel amateur standing

Local boxing promoter offers money

A local boxing promoter has scheduled "So you think you're tough" events and is currently advertising for military competitors.

THESE EVENTS are similar to promotions held on the mainland. The idea is to offer interested individuals the opportunity to compete in a three-round bout against a competitor in the same weight class. Winners receive a \$100

cash award and losers earn \$50.

The events are not open to professional boxers. However, serious amateur athletes are cautioned that the cash prizes void Amateur Athletic Union standing.

All competitors are required to apply for a professional boxing license and take a boxing physical. Application fee is \$7.50 and charge for the physical is \$15. Hawaii State Boxing Commission

rules state that all military applicants must have written authorization from their commanding officers in order to obtain a license.

ADDITIONALLY, boxing physicals must be arranged through the promoter. Naval Regional Medical Clinic, Kaneohe Bay cannot provide physicals.

All interested military competitors are cautioned that these

are commercial professional events, and that competitors are representing themselves, not the 1st Marine Brigade, MCAS Kaneohe Bay, U.S. Marine Corps or the U.S. Navy.

Marine Corps Order 5370.3D, Standards of Conduct, states that Navy and Marine Corps active duty personnel are prohibited from using their titles or positions in connection with any commercial enterprise or endorsement of any

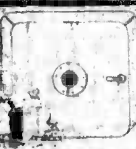
commercial product.

Also, use of military titles is prohibited in connection with commercial enterprises (with or without intent to mislead) if it gives rise to the appearance of sponsorship, sanction, endorsement or endorsement by the Department of Defense.

INDIVIDUAL military members may apply, however, commanding officers are directed to thoroughly counsel applicants.

THE GREAT SAFE

THE GREAT SAFE WITH CASH AND PRIZES IS WAITING TO BE OPENED AT **Kramer's Men's Wear**



LISTEN TO **Kramer's**

FOR CLUES AND DETAILS NOW!

GET OUT OF DEBT

through Chapter 13

A federal law which helps to pay off your debts without borrowing and in payments you can afford, stops creditor harassment and law suits, protects your job, co-signers and property. Initial consultation or info packet are without obligation.

Please call:

HOWARD Y. TANAKA

Attorney versed in Chapter 13 filings

Suite 466, Alexander Young Building

Telephone: 531-5943

So you think you're

TOUGH!

★ FIRST TIME IN HAWAII ★
OVER \$1,500 CASH PRIZES

Calling all: Bouncers ★ Jocks ★ Military (Marines, Navy, Air Force, Army) ★ Truckers ★ and anyone else who has the guts to go three rounds of boxing for upcoming Blaisdell Arena show.

NO PRO FIGHTERS
Contact Immediately
Ted Newman at 947-2312
Sanctioned by Hawaii Boxing Commission

NERVOUS TENSION...

Often Times It's A Result Of Pinched Nerves or Spinal Misalignment



CORRECT THE PROBLEM WITH CHIROPRACTIC!

Pacific Chiropractic

David L. Halpain, D.C.
602 Kalia Rd., #207



Jeanne C. Halpain, D.C.
Phone 261-0621

SAFEWAY

Where Everything's Right

Including The Price

PORK BUTTS

From Frozen Lean Tender Porkers
(Pork Steaks Tender Pan Fried lb. \$1.69)



LB. **95¢**

2# FRYER THIGHS

Mar Jak Brand



Inflation Fighter
Reg. \$2.59

EA. **\$1.19**

CROSSRIB ROASTS

Boneless USDA Choice



Pot or Oven Roasts

LB. **\$3.29**

WHOLE FRYERS

Patil Jean Frozen
U.S. Government Inspected
(Fresh Chicken Livers lb. \$1.29)



LB. **75¢**

PORK CHOPS

From Lean Tender Porkers
Center Chops Frozen



LB. **\$1.98**

CROSSRIB ROASTS

Frozen New Zealand
(Flank Steaks Frozen lb. \$3.69)



LB. **\$1.98**

CRAB CLUSTERS

Alaskan Snow Sweet Tender Sections Frozen

LB. **\$2.09**

PORTERHOUSE STEAKS

From Tender USDA Choice Beef



LB. **\$4.89**

Swansons

Chicken

Potfried
2 lb. Frozen



SUPER SPECIAL

\$3.09

Orange Juice

Bel Air Frozen 6 oz.



SAFETY SPECIAL

2 FOR **89¢**

Layer Cakes

Pepperidge Farm Frozen
17 oz.



SUPER SPECIAL

\$1.99



Totino's Pizza

Classic Combination
Frozen 9 oz.

SAFETY SPECIAL

\$1.59



Totino's Pizza

Classic Combination
Frozen 20 oz.

SAFETY SPECIAL

\$2.69



Ore Ida Potatoes

Crispers
Frozen
20 oz.

SAFETY SPECIAL

\$1.17

Green Beans

Regular or French Cut
Bel Air 9 oz.

SAFETY SPECIAL

55¢

Green Giant Corn

Niblets or Cream Style
10 oz. Frozen
w/Butter Sauce

SAFETY SPECIAL

\$1.09

STRAWBERRIES

12 oz. Basket
U.S. No. 1



EA. **\$1.39**

GRAPEFRUIT

Size 48 Ruby
U.S. No. 1



4 / **\$1**

LETTUCE

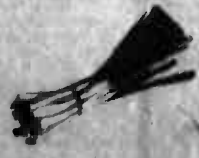
U.S. No. 1
Greenleaf



EA. **39¢**

GREEN ONIONS

U.S. No. 1
Minimum 3 ozs.



4 / **\$1**

Items and prices in this ad are available Feb. 18-Feb. 24 at all Safeway Stores listed below:
840 Ala Lili St. Honolulu
1121 E. Beretania St. Honolulu
2800 E. Maile Rd. Honolulu
1800 Pali Highway, Honolulu
86 1277 Kalia Rd. Honolulu
1100 Kalia Rd. Kailua
40 W. Kalia Highway, Kailua
75 Kaneohe Bay Dr. Kaneohe

SAFEWAY

Paradise Pastimes

There is an enchanted kingdom at Halawa Heights, below Camp H.M. Smith, where an intriguing fantasy land of games, miniature golf and entertainment can be found.

CASTLE PARK, Hawaii's enchanted kingdom located directly across from Aloha Stadium, on Salt Lake Boulevard is where treasures of fun can be found for all ages.

Challenge the breathtaking cascade down 400-foot slippery wet

slides like the ancient Polynesians did. Find out what it's like to go raft-riding down white rapids into a tropical lagoon full of water cannons, rope swings, and volcano water slides.

Swing into any of three 18-hole giant miniature golf courses, beautifully set among fantasy obstacles, splashing waterfalls and colorful flowers.

This kingdom has abundant fun for everyone. Go ahead, hop in and rev up your

own grand prix race car, and drive like crazy around curves of a tropical course full of monkeypod and plumeria trees.

There is also a theater hidden inside an old volcano with free Hawaiian entertainment. Plus, Castle Park is crammed with the latest video and skill games and much more.

Tickets are available at Special Services outlets on Oahu, however, special group discount rates are

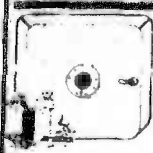
available by contacting Castle Park.

Each attraction has its own price, so go there and find out what your favorites are, then pay for each as you choose them. You can do as little or as much as you like.

CASTLE PARK is open Sunday through Thursday from 9:30 a.m. to 10:30 p.m., and Friday and Saturday, 9:30 a.m. to 12:30 a.m. Call 488-6822 for more details.

THE GREAT SAFE

THE GREAT SAFE WITH CASH AND PRIZES IS WAITING TO BE OPENED AT **Kramer's Men's Wear**



LISTEN TO **Kramer's**

FOR CLUES AND DETAILS NOW!

ENCHANTED TRAVEL, INC.

1051 KEOLU DR. 261-7947

Call us for these super low fares (some lower than military fares) **ROUND TRIP TAX INCLUSIVE**

Hon.-Chicago	\$459 ⁰⁰
Hon.-N.Y.	\$564 ³⁷
Hon.-Miami	\$563 ¹³
Hon.-San Juan	\$759 ³³
Hon.-San Fran.	\$350 ⁰⁰
One Way to L.A.	\$159 ⁰⁰ Wk. Day

OPEN M-F 9:00, SAT. 9:00-12:00

WILLIAMS, WOOD, CPA

155-A Hamakua Dr.
Kailua, Hawaii 96734

• Professional Financial Planning
• Complete Range of Accounting and Bookkeeping Services for Individuals and Small Businesses
• Income Tax Preparation

NO CHARGE FOR INITIAL CONSULTATION

Home or Office
Reasonable Fees
Discount For Seniors
Monthly Contracts

Call 261-0277 any time

H&R BLOCK TAX TEST

Question No. 12

The only deduction or credit you can claim for your children is the personal exemption.

☐ True ☐ False

FALSE. For example, if yours is a two income household, and you incur child care expenses, you should know what Form 2441 means to you. If you don't, H&R Block does. We'll take the time necessary to understand your complete situation, because if you qualify you may be eligible for up to an \$800 tax credit for child care.

WE'LL MAKE THE TAX LAWS WORK FOR YOU

H&R BLOCK THE INCOME TAX PEOPLE

There's an H&R Block Office near you

DOWNTOWN - 533-1000	LEEWARD - 487-0531
605 Ala Moana Blvd.	ALA - 96-205 Moanalua Rd.
KALAHU - Waialae Shop. Ctr.	EWING BEACH - Prof. Center Bldg.
KALAHU - 3185 Waialae Ave.	PEARL CITY - 953 Lehu Ave.
MAKIKI - 1231 Wilder Ave.	WAIHANA - 538 California Ave.
WAIHANA - Manoa Market Place	WAIHANA - 85-983 Farrington Hwy.
WAILANI - Milliani Shop. Ctr.	WAIHANA - 94-225 Looku St.
WAILANI - 941-1027	WAILANI - Milliani Shopping Ctr.
KALAKAUA - 818 Koaumoku St.	WAILANI - 98-1208 Koaumoku St.
KANALAHU - 1215 Huiwai St.	

262-8262 - WINDWARD - 235-2847

KALAHU - 148 Kalia Street KAREOKE - 48-018 Koa Hwy.

OPEN TODAY - NO APPOINTMENT NECESSARY

Scan

MIDAS

MacPHERSON STRUTS

SPECIAL JUST **89⁰⁰** A PAIR

REG. 119.95 PAIR

Installed Except Rear of Datsun 'Z' Cars

THE LOW COST WAY TO END IMPORT CAR SHAKES

• OFFER GOOD Thru Feb. 28, 1981

• Replacing or rebuilding worn out MacPherson Strut shock absorbers used to be time consuming and expensive. No longer. Because new Midas MacPherson Strut Cartridges are one-piece, self-contained units, engineered specifically to make and model, that install quickly and easily for a lot less money.

• Please call for an appointment at any one of the following locations:

HONOLULU - 938-1818	WAIHANA - 677-8157
1200 KOWALAN ST.	94-570 KOWALAN ST. 1000 WY.
HONOLULU - 941-7261	KALAHU - 262-0644
1410 KOWALAN ST.	174 KANAHUA DR.
ALA - 947-8477	WAIHANA - 822-3801
65-1234 KANAHUA ST.	20 N. KANAHUA RD. HPT.

• BONUS: ALL SHOPS OPEN 7 AM TO 6 PM FOR YOUR CONVENIENCE. HONOLULU AND WAIHANA SHOPS OPEN SUNDAY 9 AM-5 PM

FULL FINANCING AVAILABLE FREE INSPECTION & ESTIMATES!

MIDAS

When you place a Classified ad, results are just a phone call away!

TO PLACE YOUR AD - Dial 235-5881



• 13 AIRPLINES

'68 CITABRIA \$4500 cash. Stinson station wagon. Mint cond., new annual transponder \$12,000 terms possible. Ph. 235-4174. 836-0054 WES

• 16 ANNOUNCEMENTS

PRESCHOOL
Registration for September accepted now. 4 year olds. Call Mornings Ph. 455-2011
Pearl City Baptist Church

• 20 LOST & FOUND

FOUND: Watch at L'Orange Street (Kailua Beach). Call 262-5924
FOUND: 2/12, Ahuimanu Rd., Kailua. Small white dog w/red collar, 239-9069.

• 25 PERSONALS

DO Your Own: Divorce \$40. Free information. Call 524-3277

DIAL-A-THOUGHT 254-3245

HANDSOME oriental male, 26, employed desires to meet attractive female, 18-30, any race, 845-3383. Call after 6 p.m. & weekends. Ask for Dean.

NEED to find willing person, possible mother/father to help in transporting my son, 10 yrs, old from Kaneohe home, Pikoia area to The Good Shepherd School in Kailua. Refs. Will help in expenses. Call 235-5881, 8-4:45 p.m. Mon-Fri. Ask for Dale.

DATING for Singles-mail \$1 for appl. to: Singles Box 4472, Hon. 96813

HAWAIIAN Swinger Magazine. Discreet. Introductions. Send \$3.00 to Box 850-C, Waimanalo, HI. 96795

• 35 PROFESSIONAL SERVICES

ECONOMY Yard Service. Satisfactory guar. Free estimate. Kandi 235-0249 or 293-8315

"MAINTENANCE" Experienced Yard Service. Clean-up. Call J.B. at 291-1490

DEPENDABLE yard care & hauling, a little or a lot! Free Estimates 235-4206

EXTERIOR stucco & veneer plastering done by State Contractor, Keith Lazear, Lic. #C-10604
Phone 896-3866
KEITH LAZEAR PLASTERING

WINDWARD Woodworks, additions, repairs, cabinetry. Free Est. 239-5419

MONIZ Enterprises. Kitchen cabinets, counter tops, furniture, carpentry, free estimates. 235-5362

LET us haul your junk to the dump. Cheap. Call 524-0652

Cleaning Services, Residential, Commercial. Ph. 521-2331

Income Tax Preparation for W-2's Residents Days - 247 5306 Eves - 236-2947 (Lic. 1397)

LOW Budget masonry. No job too small. Driveways, slabs, sidewalks, blockwall & stucco. Dick 254-3892

WANTED: Older lady to house sit from May to December each year. Must be able to move out when owners come in winter or on other occasional brief period. In Kailua on beach. All utilities paid but no salary. Write giving age, experience & character references to Sun Press, c/o BC, 48-016 Alaloa St., Kaneohe, HI 96744

DESIGNER custom-made, all types of garments and alterations. Ph. 262-4949

ATTENTION: Swingers and liberal minded adults. Connections, unlimited magazine is now accepting personal ads for its March issue. Our magazine offers discrete means of communication for those who share similar life-styles. Call today and take advantage of our introductory offer. 942-2014

IF YOU want to drink, that's your business. If you want to stop, that's yours. Alcoholics Anonymous Ph. 948-1430

DIVORCE with attorney \$90 432-1111

• 35 PROFESSIONAL SERVICES

HOUSE Framing Carpenter Expert. Refs. all tools (BC8358). Call 247-4457

PRO Income Preparation. Specializing in Military taxes. 833-9407 eves.

TEXTURIZING for ceilings & walls, clean, quick job! Reasonable price, free est. Call Eddie 261-7531

YARD Service: Retiree. Call 262-7588

WINDWARD Yard Service. Reasonable rates. For Free Estimate Phone Norman or John at 262-5395 Evenings.

"ISLAND-Wide Masonry" patios, sidewalks, steps, driveways, block wall, stone wall, stucco, fire places, very reasonable. Free est., 671-4942

TYPING: Performed by experienced typist on Selectric typewriter. All work guaranteed. Ph. 235-5063

OFFICE, apt. & house. No work too big or too small. Cleanliness is a pleasure. Call 235-0627

WILL do Yard Cleaning, Tree Trimming and Hauling. Dependable. Reasonable rates. Call James at 261-3584 between 10 a.m. and 10 p.m.

WALLACE Garden Service, gen. yd. maintenance, old lawns restored, new lawns planted, trim hedges & shrubs, remove rubbish. Hawaii Kai to Kahala. Free est. Ph. 395-1929

QUALITY house painting. Reasonable rates. Call today 261-9208, 947-3049

DOLLIE'S Delight Catering Service. Specializing in private parties. 261-4411

CARPENTRY - Masonry - Roofing - Concrete - Remodeling. Repair Refs. 235-6148

DISCOUNT wall papering, tile laying & interior painting. Call Bob at 262-7671 or John at 262-7844

KAILUA MASONRY Additions, slabs, tile walls, pools, patios, driveways. Free Estimates. Very reasonable. Call 261-3584

MUSICIANS contact Service. All music. Call 455-2114

AESTHETIC Typing Shant Service Call 261-8072

PARKER books: Used paperback, new & collectible comic. We buy, sell & trade. 909 A Lehua St., Pearl City. Store Hours: 10-6 p.m. daily 456-4986

• 35 PROFESSIONAL SERVICES

CLEAN ANYTHING! Need jobs badly Call 455-5746

BOOKKEEPING & tax work by pro., min. tax & max. refund is the key. 839-6944

CABINETS & Counters falling apart - need shelves or custom work? Free Estimates 395-8338 Creative Woodwork & Design

FURNITURE REFINISHING Antique restoration repairs Free estimates. Pick up & delivery. Ph. 261-7078

HABITAT Cleaning Service, Commercial & residential. Free est. 235-6648

KAILUA MASONRY Additions, slabs, tile walls, pools, patios, driveways. Free Estimates very reasonable. Call 261-3584

ODD jobs, wall paper hanging, carpentry & marine engine repairs. 396-9883

TAX Preparer, professional experienced help can save you time & money. 2722 Pond Rd., KMCAS: Call 254-3890

FURNITURE REFINISHING Antique restoration repairs. Free estimate. Pick up & delivery. Ph. 261-7078

GENERAL BUILDING Maintenance, Repair & Painting. Richard K. Chun. Call 247-2583

WINDWARD Handyman Service. No jobs too small! Carpentry, plumbing, repair, rental maintenance, free estimates. 254-1987

SEAMSTRESS does expert sewing & alterations. Call 955-0456

• 45 SCHOOLS & TRAINING

PIANO lessons: Hickam area. Has degree, specializing in classical music. Call Toshiko at 422-2823

HONOLULU Music Institute. Group and private instruction in Guitar/Piano/Organ/Woodwinds. 2 locations: Honolulu and Kailua 536-6161

BEGINNING Piano or Flute lessons. Individual instruction. Ph. 247-2495

PRIVATE or group lessons in NEEDLEPOINT, CROCHET, EMBROIDERY, KNITTING & CROCHET. Reasonable rates. Call 254-5145

Hawaii Math MATHEMATICS LEARNING CLINIC
Individual Counseling By Appt. 261-8106

• 45 SCHOOLS & TRAINING

PIANO or Organ instruction for all ages in Pearl City. Ph. 456-1815

GUJAR & Piano lesson in your home by experienced teacher. Kailua only. Brian 261-1465 after 6 p.m.

PIANO lessons by exp. teacher in Kailua. Limited openings for children & adults. Call 262-8697

TUTORING: Master's in Learning Difficulty. K thru 8th grade. Will commute. 373-8271

SPELL WITH PHONICS IMPROVE READING
Easy Phonics Method. Beginning remedial reading. Grammar, comprehension. Any level K-Adult. Individual tutoring. Qualified experienced teacher. 262-7242

• 50 BUSINESS OPPORTUNITIES

BE YOUR own boss. Full time or part-time. Local Shakes distributor trains you for a unique opportunity. For appointment call Bob Briggs at 262-8298 or 247-6093 eves.

BEGIN at home. Full or part time. Ideal for couples or singles. Call evenings 261-7073

• 60 HELP WANTED MALE & FEMALE

ARTEX Decorator Paints, accepting orders. Party Plan. Call 833-4146

COFFEE Shop/Salesperson - part-time. Call 521-5062 ask for Al.

LOST your Tri-Chem liquid Embroidery instructor? FREE services, classes: 624-9130, 833-3914, 254-4834, 637-6094, 422-2854. F/part time career opportunities. No. Exper. Needed.

TEACHER for Gifted Pre-school Program. Degree in Early Childhood Education in Elem. Ed. and exp. w/Gifted Children. Send resume to: Kindergarten & Children's Aid Association, 2707 So. King St. Hon., HI. 96826

AVERAGE \$10-\$12 hr. demonstrating stitchery. Flexible hours. 623-1998

EARN EXTRA MONEY
Military & Local weapons Part Time 8:30-10 p.m. Nation's largest discount shopping service with the color & delivery positions avail. Distributors of cameras, televisions, microscopes. Also the buying service for clothing, furniture, sporting goods, auto accessories. Good pay in home. Pearl Harbor, Bell Lake, Waimanalo, Ewa Beach, Barbers Point & EMBEL. Start at \$4.10/hr. or increase pay plan works. Call Control Personnel Office for interview. 833-4576 ask for Mary or 947-5556

• 60 HELP WANTED MALE & FEMALE

Temporary Office Jobs
Just A Phone Call Away
536-3456
EMPLOYERS OVERLOAD
188 So. Hotel Street

PART time rec. ctr. director for community center. 25 hrs. per wk., Mon-Sat., afternoons. Must have life-saving certificate. Call 949-2954.

NEED extra income? Earn it in your spare time. Call 488-5667 for Appt.

AMATEUR Photographer needs amateur models. Call 836-3913.

DO you wish you had a career that was both rewarding and exciting? That career could be waiting for you here at KDOE Country Radio. We're expanding our sales staff and we're looking for energetic self-starting men and women. If you think you'd like to join KDOE sales team call 671-2851 between 9 and 5, Mon. thru Fri. Taking your career to the country could be the best move you ever made.

INSTRUCTORS part-time evenings. Computer Science courses. Master's preferably. Call Control Data Corp. 833-2555

TEACHER
for Gifted Pre-school Program. Degree in Early Childhood Education in Elem. Ed. and exp. w/Gifted Children. Send resume to: Kindergarten & Children's Aid Association, 2707 So. King St. Hon., HI. 96826

AVERAGE \$10-\$12 hr. demonstrating stitchery. Flexible hours. 623-1998

BE ALL YOU CAN BE
100th Bn. 442d Inf
ARMY RESERVE

Call Kaneohe... 235-6491
Waikiki... 531-3715
Kalihi... 847-3905
Waipahu... 671-3934

YAMAHA

Is proud to present:

BILL IRWIN

In Concert at the Yamaha Organ



SUNDAY, FEB. 22
2:00 P.M.
FREE ADMISSION!

Yamaha is proud to present Bill Irwin in concert Sunday, February 22, 2:00 p.m., at the Ala Moana Hotel Garden Lanai. Bill, a well known Pop Organist, arranger and educator in the U.S.A., Canada and Japan, will be performing at the Yamaha Organ. Concert time is 2:00 p.m. -- so come and hear what all the excitement is about!

BRING THE WHOLE FAMILY!

YAMAHA MUSIC CENTER

1314 Kapiolani Blvd. at Piikoi

524-5675

Racquetball

coming to Paa St. in MAPUNAPUNA (construction resumed)

Courthouse Racquetball

Kaneohe - Now Open - 45-008 Kam Hwy. 235-5839

Mapunapuna Opening This Spring 2810 Paa St. 833-8619

JOIN NOW Memberships for TWO LOCATIONS!

Individual	\$80	No Monthly Fees
Couples	\$120	
Family	\$145	
Junior	\$55	

• Pro Shop
• 12 courts (Paa location)
• 9 courts (Kaneohe)
• Daily Dynamics Exercise Studio

"Where Hawaii Plays Racquetball"



60 HELP WANTED

WANTED NOW!!!
Tailors \$700
Counter Person \$10
Grill Person \$3.10
P.T. Person Friday to \$3.50
Drivers, 5 lic. \$55
Sales Clerk to \$3.35
Security Guards to \$3.50
Maintenance to \$6
Refuse Helpers to \$4
Counter Sales \$3.10
Loan Clerk to \$650
Custodians eves. to \$3.50
KOKUA EMPLOYMENT
Apply at 787 Kailua Rd.
Kailua-free parking

62 DOMESTIC HELP

BABYSITTER needed for 7 yr. old boy, 2 days a wk. 2:15-6 p.m., must live in Kailua. L. area. Kailua or have own transportation. Call 262-0120

MATURE person to live in & care for female invalid. Ph. 261-2874

NEED person to do housekeeping & sit 2 small children \$2 per hour, 3 to 4 nights a week including weekends. 422-8029

BABYSITTER for infant girl, 1 yr. old boy, Kailua. Enchanted Lake, 261-9831

63 SITUATIONS WANTED

BABYSITTING 75¢ hr., 2 or over. Mon.-Fri. days, refs. furn., 254-3258

WILL do babysitting, my home, Wahiawa. Lots of TLC also a 2 year old playmate. Phone 621-3383

LICENSED sitter/nurse/teacher will sit days, afternoon, after school. Mon. to Fri. Call 487-0141

CERTIFIED teacher & Young mother will care for 1 thru 4 year olds in my home—learning environment. Pearl Harbor 422-4056

MATURE person to live in & care for female invalid. Ph. 261-2874

FORMER pre-K teacher has opened a licensed day care in the home. Which includes a well balanced academic program, hot meals, excursions, but most of all TLC. 262-9455

RELIABLE college student, exper. Will babysit eves. Also, will house sit. Jon. 261-6005

WILL babysit toddler, Wahiawa Whitmore Village area. Experienced. Ph. 621-7846

68 GARAGE & LANAI

BOY Scout Troop 228 Garage Sale: 1250 Mokapu Blvd. Sat. Feb. 21, 9 to 5 p.m.

FEBRUARY 21 Fun Fair, Kailua Elementary Super rummage sale. 10 AM to 3 PM. Everyone invited, enjoy games, food & disco. Buy many varieties plants at fantastic low prices.

GARAGE SALE HAULING. WE WORK WEEKENDS. 261-2881

SUN. shoppers! Lanai sale, multi-family "clean-up" sale. 2/22, 9-3 p.m. 782 N. Kalaheo, Kailua.

67 VW. 65 BMW parts: rubber rug pad 9 X 12, air cond., clothes, children's books & much more. 2/21 & 2/22, 4-208 Malae, Kaneohe. 254-1221

WILL do Yard Cleaning, Tree Trimming and Hauling. Dependable, reasonable rates. Call 261-3584 between 10 a.m. to 10 p.m.

RENT sale: Misc. items & opps. 2/21 9-4 p.m. 45-440 Milani St., Kaneohe

SAT. 2/21, 9-12. 2214 Bauer Dr., Kailua; Furn., clothing, misc.

FAMILY Sale: 10' glass doors; furniture; bikes; water heater & much more! 2/20 and 2/21, 8-4 at 1132 Ilkale Place, Kailua

THURSDAY Plants for sale: 565 Papalani St., Feb. 1 & 2, 7-5 each.

SAT. 2/21 9 a.m. 771 Kumuahi Pl., Spineker (ale Hawaii Kai). Antiques, books, toys, etc. 261-3584

FURN. etc. eves. 2/21 (8-12): Redwood table; Kenmore washer/dryer; queen water bed w/8 drawers; desk; china & more. 254-3571, 322 Ilwahi Lp.

CLOTHING & misc. 978 Waioli St., Hawaii Kai. Sat. 9.

68 GARAGE & LANAI

HOUSEHOLD & decor. items; antiques; primitive items; girls bicycle; jewelry; books; clothing; sewing machine; misc. Sat., Feb. 21, 9 to 3 p.m., 47-678 Hui Alia St., Kaneohe

MOVING out of town sale. Cheap appliances; TV, stereo, etc. Call anytime after 4 PM 239-8558

73 APTS. FURNISHED

AIEA: 2 bdrm. 2 bath apt. to share, utils. paid, furn., w/D.M. wave oven, dish wash, covered stall, Harbor View, large lanai, \$200 487-5248. Prefer open minded female.

CHARMING Studio Apt. for single mature adult. No pets, includes utilities & cable. \$350. Call 261-9922

WAIANAE: On Pokai Bay, refurbished studio \$275. 538-6653, 235-3861 eves.

74 APTS. UNFURNISHED

KAILUA: Clean 1 bdrm. apt., no pets, no children, \$300 mo. 247-0290 eves.

KANEOHE: Studio apt. for rent \$225 + utils. Call after 7 p.m., 262-6047

75 APTS. PARTLY FURN.

KANEOHE - 1 bdrm., 1 bath, pool \$375 mo. Includes all utils. 262-6891 eves.

KANEOHE: 3 bdrm., 2 bath, upgraded, all appliances, \$500 a mo. 595-6032 Call Now.

CHOICE 2 bdrm., 1 bath apt. across the street from beach \$395 a mo., lease and deposit required. Teri 523-0456, 531-8980

KANEOHE: Haiku Hale, 3 bdrm., 2 bath, 3rd fl., end unit, new carpet & painting, pool. Ph. 524-6291

KAILUA: studio, spacious, breezy, near busline, water \$275, 262-6462

WAIHAWA: 2 bdrm., \$320, Call 696-6594

PEARLRIDGE Lelepono, 2 bdrm., 2 bath, utility, 27th fl., view, parking \$525. Call 487-5835

SALT LAKE: "5 Regents," 1 bdrm., amenities galore, 25th fl., view, utils. incl. \$395. Call 623-3663

76 RENTALS TO SHARE

LARGE room, comfortable home, pool, prefer non-smoker \$185 261-5259

KAILUA: 2 bdrm., female to share w/same \$200 first & last. 262-5617

KAILUA: Beach house \$225. Mature caring, 261-1901 Grace 7 a.m./eves.

KAILUA'S most beautiful mountain view, can be shared by you. Call Sue days, 836-2388 or eves. 262-0226

KANEOHE: Share home couple \$300 + utilities. Avail. 2/28/81 235-1173 A.M.

ROOM & share lge. house on Kaneohe Bay \$150 incl. utils., avail. 3/1 Employed non-smoker, 247-4653

MODEST rent for responsible women to share 2 bdrm., 2 bath condo near McKinley, 254-1863

KAILUA: Female to share spacious house w/same, own bdrm. \$180 mo. + utilities. Call 261-8170

KAILUA: Female to share lge. house w/same, close to bus \$166. Call 262-0118. Avail. immed.

MILILANI: Bachelor to share large 4 bdrm. house \$305 + utils. 625-1172

KANEOHE: Fully furn. townhouse, 257-3405 bus., 239-8990 res. Ask for W.B.

KAAWA: Roommates wanted to share 3 bdrm., 2 bath house near beach \$150 & \$200 mo. + utils. Ph. 237-8485 eves.

LOUIE AND JILL Thanks for the Birthday Goodies

AIEA: 3 bdrm. home, female to share w/same. \$250 mo. Call 487-2638

82 HOUSES UNFURN.

KANEOHE: 1 bdrm., married couple, no kids & pets \$300. Ph. 247-1872

KAILUA: New, 3 bdrm., 1 1/2 bath, yd. \$528. 537-6554 eves. & weekends.

83 HOUSES PARTLY FURNISHED

PEARL City: 3 bdrm., 1 1/2 bath, family rm., fenced yd. open patio, 2 car garage \$700. Ph. 455-1104

83 HOUSES PARTLY FURNISHED

3 BDRM., 2 full bath, 2 carport, fenced, view of Diamond Head, Pearl Harbor & Barbers Point. Makalei \$575 water included. 672-4224 eves.

WAIHAWA: 1 bdrm. cottage, couple only \$225. Call 621-5360

KAILUA: 4 bdrm., 2 bath. Call days 521-8571, 523-3693 eves. Betty

85 TOWNHOUSES PARTLY FURNISHED

KAILUA: 3 bdrm., 2 1/2 bath, avail. 3/1 \$590 mon. + dep. 449-6325, 396-9789

WAIKALANI Woodlands - New 3 bdrm., 2 bath, lanai, covered parking. 735-2336

WINDWARD Harbor: Lge. 3 bdrm. exec. condo, 2 bath, pool, 2 lighted tennis courts, sauna, jacuzzi, wet bar, solar system, end unit, all appls. incl., view of Olanuana & Koolau, waterfront off the back lanai \$675 mo. Call Ellen at 261-9711 or 261-6222

KAILUA: Windward Cove, new luxury condo, 3 bdrm., 2 bath tennis, pool, security, lovely view \$700. 422-2647, 422-2443

KAILUA: Windward Cove, 3 bdrm., 2 bath, most private unit: breath taking view \$700 or can turn, Ann Morgan (RA), 261-8447

HAUKU Gardens, 2 bdrm., 2 bath, end unit, like new condition, \$112,000. Low down A/S or VA possible. Call Mr. Medlock, 836-6228 (work), 235-6929

KAILUA \$119,000 Spacious 3 bdrm. 1 bath like new A-1 convenient, 5,550 lot. Fee. By owner. Courtesy: Open Feb, 22 & 29, 329 Oneawa St. Rm. 501 Ph. 941-3112

2 HOUSES Maunawili, 3 bdrm., 2 bath \$285,000; Kailua Bay Estates, 4 bdrm., 3 bath \$300,000. E-Z terms. Ph. 254-3132

NORTHBROOK: Mililani, 2 bdrm., 1 bath condo, fully furn., pool, 2 car garage, rec. facilities, ground fl., view, private, fee. Sold by owner \$75,000. Call 623-7427

HAWAII Kai: 3 bdrm. & den, 2 1/2 bath townhome, view, marina access, numerous amenities \$162,500 Lease Owner 395-7370, M. Lockridge, Inc. (R) 262-5403

AIKAHI area 1124 Mokapu Blvd., spacious, immaculate, 3 bdrm., 2 bath, lge. family rm., living rm., dining rm., hollow tile wall encloses back yd. giving privacy to a beautiful lanai & solar heated pool. Lease \$153,500. Shown by owner 254-1284 M. Lockridge Inc. (R)

WAIKALANI Woodland: Unit C-705, 3 bdrm., 2 bath, end unit, near freeway & military facility, yet quiet setting. VA assumption possible \$85,000 fee. Shown by owner, 623-8087 M. Lockridge, Inc. (R) 262-5403

KAILUA Gardens: Poinciana Manor, 2 bdrm., 2 bath condo, 930 sq. ft. inside, 350 sq. ft. of astro turf lanai, Semi-furn., near shopping ctrs., & schools \$103,000. Call after 6:30 p.m., 261-0469

PUU ALII/Kaneohe: Open House, Sun. 1-5, 46-049 Alii Anela #1724. Come see or call for appl. on this 3 bdrm., 2 bath townhome. Most desirable location, upgraded. Owner help financed \$167,500. Brokers Courtesy, 235-1989

KAILUA: 2 story, 2400 sq. ft. 5 bdrm., garage opener, pool \$158,000, 261-1111

TEMPLE Valley townhouse, 2 bdrm., upgraded, end unit, spa in patio. Assumable 10% VA loan or A/S, fee. \$94,000/best offer by owner, principals only. 239-9488, see to appreciate

MAUNAWILI Estates: Fee, 5-6 bdrms., 3 bath, gallery, open beam, mountain view, lanai, 10,069 sq. ft., fully furn., \$299,000 by owner, leaving islands. 3% courtesy for realtors. 261-1201, 487-2234

MILILANI: Valleyview, Apt. E-206, upgraded; 2 bdrm., paneled wall, new carpet, 6 kitchen appls., 2 covered parking. Shown by owner, 623-3616. Asking \$69,500 furn. M. Lockridge, (R) 262-5443. Make us an offer.

WORKING couple (carpenter/recty.) seeks quiet 1 or 2 bdrm. rental to \$350. Call 262-2135 Richard, eves.

RESPONSIBLE non-smoker w/2 children would like to rent 2 or 3 bdrm. house or apt. on Windward side. Under \$350. Please call 235-5881 9-5, ask for Robin

KAILUA/LANIKAI, nice studio beside ocean, low \$, employed, no risk. 261-1901 eves. Grace

MARKETING and Distribution MANAGER

YOU... will handle the complete Marketing and Distribution of Hawaii's most popular sports magazine.

YOU... will arrange for the sale of this magazine by up to 100 groups and organizations.

YOU... will also set up deals with stores and food chains and help create displays.

YOU... will go into the community and meet, meet, meet people.

YOU... will get a percentage of every book sold.

YOU... will have percentage incentives along the way so that you can make more \$\$\$.

YOU... will work out of both your house and the office of Hawaii Sports Kuleana.

YOU... should have a car and be able to work flexible hours.

YOU... will start a \$700 a month base, with bonuses and incentives.

Call 732-7855, 735-4186
Monday to Friday 7 AM till 12:00 Noon

CHIP DAVEY'S
HAWAII
SPORTS
KULEANA

88 RENTALS WANTED

2 BDRM. house, guest house or duplex. Unfurn. or partly furn. \$400-\$425. 261-0617.

103 OFFICES FOR RENT

STORE front Kailua, Uluniu Street, 20' frontage 700 plus sq. ft. Available 2 weeks - after agreement. Contact Pat at 262-6107 9 a.m. to 5 p.m.

COMPLETELY renovated office space to share with appropriate individual. Present tenant is Physician. Ph. 247-6661.

114 REAL ESTATE FOR SALE

KAILUA: 2 bdrm., 2 bath townhouse, \$15,000 down, 3 yr. sub A/S, 10% \$98,000. Windward Realty, Inc. 261-1500, Dottie Kamahele (RA) 261-4292

AIEA: 3 bdrm., 1 1/2 bath townhome, above Pearlridge with fantastic view of Pearl Harbor. Upgraded carpeting, all appls. incl., high assumable VA mortgage at 10% \$109,500. Lease: Sun. Open House 2-5 p.m. 98-831 D Kaonahi St., Ridgeway B-1. Owner. 487-5903, M. Lockridge, Inc. (R) 262-5403

HAUKU Gardens, 2 bdrm., 2 bath, end unit, like new condition, \$112,000. Low down A/S or VA possible. Call Mr. Medlock, 836-6228 (work), 235-6929

KAILUA \$119,000 Spacious 3 bdrm. 1 bath like new A-1 convenient, 5,550 lot. Fee. By owner. Courtesy: Open Feb, 22 & 29, 329 Oneawa St. Rm. 501 Ph. 941-3112

2 HOUSES Maunawili, 3 bdrm., 2 bath \$285,000; Kailua Bay Estates, 4 bdrm., 3 bath \$300,000. E-Z terms. Ph. 254-3132

NORTHBROOK: Mililani, 2 bdrm., 1 bath condo, fully furn., pool, 2 car garage, rec. facilities, ground fl., view, private, fee. Sold by owner \$75,000. Call 623-7427

HAWAII Kai: 3 bdrm. & den, 2 1/2 bath townhome, view, marina access, numerous amenities \$162,500 Lease Owner 395-7370, M. Lockridge, Inc. (R) 262-5403

AIKAHI area 1124 Mokapu Blvd., spacious, immaculate, 3 bdrm., 2 bath, lge. family rm., living rm., dining rm., hollow tile wall encloses back yd. giving privacy to a beautiful lanai & solar heated pool. Lease \$153,500. Shown by owner 254-1284 M. Lockridge Inc. (R)

WAIKALANI Woodland: Unit C-705, 3 bdrm., 2 bath, end unit, near freeway & military facility, yet quiet setting. VA assumption possible \$85,000 fee. Shown by owner, 623-8087 M. Lockridge, Inc. (R) 262-5403

KAILUA Gardens: Poinciana Manor, 2 bdrm., 2 bath condo, 930 sq. ft. inside, 350 sq. ft. of astro turf lanai, Semi-furn., near shopping ctrs., & schools \$103,000. Call after 6:30 p.m., 261-0469

PUU ALII/Kaneohe: Open House, Sun. 1-5, 46-049 Alii Anela #1724. Come see or call for appl. on this 3 bdrm., 2 bath townhome. Most desirable location, upgraded. Owner help financed \$167,500. Brokers Courtesy, 235-1989

KAILUA: 2 story, 2400 sq. ft. 5 bdrm., garage opener, pool \$158,000, 261-1111

TEMPLE Valley townhouse, 2 bdrm., upgraded, end unit, spa in patio. Assumable 10% VA loan or A/S, fee. \$94,000/best offer by owner, principals only. 239-9488, see to appreciate

MAUNAWILI Estates: Fee, 5-6 bdrms., 3 bath, gallery, open beam, mountain view, lanai, 10,069 sq. ft., fully furn., \$299,000 by owner, leaving islands. 3% courtesy for realtors. 261-1201, 487-2234

MILILANI: Valleyview, Apt. E-206, upgraded; 2 bdrm., paneled wall, new carpet, 6 kitchen appls., 2 covered parking. Shown by owner, 623-3616. Asking \$69,500 furn. M. Lockridge, (R) 262-5443. Make us an offer.

WORKING couple (carpenter/recty.) seeks quiet 1 or 2 bdrm. rental to \$350. Call 262-2135 Richard, eves.

RESPONSIBLE non-smoker w/2 children would like to rent 2 or 3 bdrm. house or apt. on Windward side. Under \$350. Please call 235-5881 9-5, ask for Robin

KAILUA/LANIKAI, nice studio beside ocean, low \$, employed, no risk. 261-1901 eves. Grace

MARKETING and Distribution MANAGER

YOU... will handle the complete Marketing and Distribution of Hawaii's most popular sports magazine.

YOU... will arrange for the sale of this magazine by up to 100 groups and organizations.

YOU... will also set up deals with stores and food chains and help create displays.

YOU... will go into the community and meet, meet, meet people.

YOU... will get a percentage of every book sold.

YOU... will have percentage incentives along the way so that you can make more \$\$\$.

YOU... will work out of both your house and the office of Hawaii Sports Kuleana.

YOU... should have a car and be able to work flexible hours.

YOU... will start a \$700 a month base, with bonuses and incentives.

Call 732-7855, 735-4186
Monday to Friday 7 AM till 12:00 Noon

CHIP DAVEY'S
HAWAII
SPORTS
KULEANA

114 REAL ESTATE FOR SALE

VACANT lot - 8,592 sq. ft., lot, 3 blocks from beach. Pokai Bay Estates, Waianae. \$60,000 Courtesy 672-4229 eves

MILILANI - 3 bdrm., 2 1/2 bath townhouse. Very clean, 2 car spaces, new carpeting & drapes, close to shopping, schools. For sale by owner. \$116,000. 623-8557

PINE KNOLL VILLAS Mililani - 3 bdrm., 2 bath townhome, sunken living rm., cathedral ceiling, garage. Fee Simple. By owner. \$134,500. Ph. 623-6795

WAIHAWA Triangle: Spacious custom built home w/unique fl. design, 4 bdrm., 1 1/2 bath, fee, hardwood flrs., lge. backyard. Appraisal has been done. Looking for serious buyers. E. Saigusa, 672-4468

BIG Island, 1/2 acre, fee, residential lot. Ready to build. 946-8683 after 5 p.m.

FOR Sale: ladies diamond ring, 14K yellow gold. Diamond is 1.40 emerald cut and beautiful. Written appraisal 9-80 at \$9,400, our price \$7,850. Call 262-0528 for bank appl.

SOFA \$150; upholstered swivel rocker \$65, both in mint cond. 262-4351

SINGLE bed,

136 MISCELLANEOUS WANTED

WE BUY used furniture. We pay cash and pickup. Call 261-8492 or 261-1408

WANTED: Hood to a '71 Toyota Corona 4 door station wagon. 254-2671 John

CASH for Lawn Mowers & Outdoor Motors. Any Condition. PH. 259-5927

WANTED: Fencing w/post & gate at least 30' long & 3' high. 689-0742

WANTED: 16' Hobie Cat Starboard hull. Call 262-7467 after 4 p.m.

137 MACHINERY & EQUIPMENT

10" CRAFTSMAN radial arm saw w/stand, 110-220, \$200. 10" CRAFTSMAN bench saw w/stand, 110-220, \$200. 261-5332 eves.

144 MUSICAL SALES & SERVICE

WURLITZER upright piano, hardly used, \$1900. 261-1201 between 7 and 9 p.m.

146 BOAT SUPPLIES & SERVICE

14' HOBIE CAT jib sail, fun boat. \$900. Call 524-7129

79 21' OMC I/O, Cutty cabin perfect cond., trailer \$14,000/off. 537-3327 days, 396-6526 eves.

HOBIE 16 with trailer, new rigging \$1500. Ph. 261-2928

28' LUHRs, depth recorder, fighting chair, 165 gal. gas, flying bridge, head, stove, sink, fresh running water, excl. cond., lots of space, lots of extras. A Real Honey! \$18,500. Ph. 261-3584

13' LARSEN sailboat, good cond., w/all rigging & sail \$395. 239-9364

70 ERICSON 29 Sloop Fully-Sound, proven inter-island cruiser. \$25,000 firm. Call 261-2878

HOBIE 14 ft. new rudders, lamp, jib-rigged, hiking gear, trailer, excl. cond. but disassembled. \$650. Ph. 949-2918 24 hrs.

8' FIBERGLASS O/B w/trailer & 85 hp engine \$2800/best offer. 624-5077

10 FOOT Sailboat with trailer, oars, etc. Call 261-0264 after 5 PM. \$300

15' RUBBER raft w/25hp Evinrude & trailer, many extras, excl. cond. \$2500. 833-6887 or 422-7317

151 PET SUPPLIES & SERVICE

GOLDEN Retriever needs good home, female, 4 1/2 yrs. old. Great w/children. Has papers \$75. 254-3250.

RIDING instructor will teach at your stables or ranch. 395-6810 Debl.

MALTESE AKC with papers, 1 yr. old, female \$250. Call 239-9891

TOY Chihuahua, female, 5 months \$80. Call 499-7012

AKC Champion bred female Akita puppy. Will negotiate. 624-5695, eves.

AKC Doberman pups, excl. quality, temperament, size \$175. 254-5475

ALBINO Cockatiels & Ringnecks. Call 262-6096

PIT Bull mixed pups \$10 ea. to good home. Ph. 677-0569

156 AUTO PARTS & SERVICE

5 Tires — 3 radials good cond., 2 bias-ply, new; \$25 a piece or all 5 for \$100. 1 new Delco battery, \$30. 235-0861.

BACK seat for VW Van, good cond., \$30. 237-8030 eves.

AUTO parts for Toyota Landcruiser and Volkswagens. Call 237-8030 Eves.

'72 VW 411 for parts \$250/off. Ph. 239-9478

SUNROOFS INSTALLED U CAN AFFORD

FREE ESTIMATES! LOW PRICES \$169 UP WORK-BY-APPT. 524-3277 (24 hr.) 247-1405 HAWAII FUN-ROOFS SAT. 10-4 PM 45-1021 Kam Hwy. Kaneohe, Hawaii

HEAVY duty lumber rack for pickup truck \$129 Ph. 671-2475

'73 TOYOTA Corolla parts, as is. Call 235-4392

MICHELIN tires & rims brand-new \$250. Call 239-9891

INTER-ISLAND AUTO PAINTING & BODY WORKS

any size car from \$179.95 Ph. 531-3105 Iwani Ph. 488-1967 Aiea

'69 VW BUG for parts. Call 257-2598 ask for Max. or leave message.

396 MOTOR, new cam lifter manifold, 780 cu. in. Lots more 235-5236.

WINDWARD VW Clinic. Mobile V.W. Repair Shop. Ph. 247-2825. Repairs done at your home by appt. Island Wide.

161 AUTOS WANTED

WANTED: '65-'67 VW bus parts, engine, lid, rear bumper, bench seats, wiper motor assembly. Ph. 839-4024, 833-9642

166 PICKUPS, TRUCKS

'76 CHEVY 1/2 ton truck \$2325/best offer. 254-3740 eves., 257-2042 DWH

'69 FORD flatbed, good cond. \$900 or best offer. Call 235-4880.

1967 POWERWAGON, 4x4, 1/2-ton crew cab, twin range trans., sound condition, 6 cyl. 1st \$1400 cash takes. Call David at 235-5881 days, 941-7196 eves.

166 PICKUPS, TRUCKS

'76 CHEVY 1/2 ton truck \$2325/best offer. 254-3740 eves., 257-2042 DWH

'69 FORD flatbed, good cond. \$900 or best offer. Call 235-4880.

1967 POWERWAGON, 4x4, 1/2-ton crew cab, twin range trans., sound condition, 6 cyl. 1st \$1400 cash takes. Call David at 235-5881 days, 941-7196 eves.

166 PICKUPS, TRUCKS

'76 CHEVY 1/2 ton truck \$2325/best offer. 254-3740 eves., 257-2042 DWH

'69 FORD flatbed, good cond. \$900 or best offer. Call 235-4880.

1967 POWERWAGON, 4x4, 1/2-ton crew cab, twin range trans., sound condition, 6 cyl. 1st \$1400 cash takes. Call David at 235-5881 days, 941-7196 eves.

166 PICKUPS, TRUCKS

'76 CHEVY 1/2 ton truck \$2325/best offer. 254-3740 eves., 257-2042 DWH

'69 FORD flatbed, good cond. \$900 or best offer. Call 235-4880.

1967 POWERWAGON, 4x4, 1/2-ton crew cab, twin range trans., sound condition, 6 cyl. 1st \$1400 cash takes. Call David at 235-5881 days, 941-7196 eves.

166 PICKUPS, TRUCKS

'76 CHEVY 1/2 ton truck \$2325/best offer. 254-3740 eves., 257-2042 DWH

'69 FORD flatbed, good cond. \$900 or best offer. Call 235-4880.

1967 POWERWAGON, 4x4, 1/2-ton crew cab, twin range trans., sound condition, 6 cyl. 1st \$1400 cash takes. Call David at 235-5881 days, 941-7196 eves.

166 PICKUPS, TRUCKS

'76 CHEVY 1/2 ton truck \$2325/best offer. 254-3740 eves., 257-2042 DWH

'69 FORD flatbed, good cond. \$900 or best offer. Call 235-4880.

1967 POWERWAGON, 4x4, 1/2-ton crew cab, twin range trans., sound condition, 6 cyl. 1st \$1400 cash takes. Call David at 235-5881 days, 941-7196 eves.

166 PICKUPS, TRUCKS

'76 CHEVY 1/2 ton truck \$2325/best offer. 254-3740 eves., 257-2042 DWH

'69 FORD flatbed, good cond. \$900 or best offer. Call 235-4880.

1967 POWERWAGON, 4x4, 1/2-ton crew cab, twin range trans., sound condition, 6 cyl. 1st \$1400 cash takes. Call David at 235-5881 days, 941-7196 eves.

166 PICKUPS, TRUCKS

'76 CHEVY 1/2 ton truck \$2325/best offer. 254-3740 eves., 257-2042 DWH

'69 FORD flatbed, good cond. \$900 or best offer. Call 235-4880.

1967 POWERWAGON, 4x4, 1/2-ton crew cab, twin range trans., sound condition, 6 cyl. 1st \$1400 cash takes. Call David at 235-5881 days, 941-7196 eves.

166 PICKUPS, TRUCKS

'76 CHEVY 1/2 ton truck \$2325/best offer. 254-3740 eves., 257-2042 DWH

'69 FORD flatbed, good cond. \$900 or best offer. Call 235-4880.

1967 POWERWAGON, 4x4, 1/2-ton crew cab, twin range trans., sound condition, 6 cyl. 1st \$1400 cash takes. Call David at 235-5881 days, 941-7196 eves.

166 PICKUPS, TRUCKS

'76 CHEVY 1/2 ton truck \$2325/best offer. 254-3740 eves., 257-2042 DWH

'69 FORD flatbed, good cond. \$900 or best offer. Call 235-4880.

1967 POWERWAGON, 4x4, 1/2-ton crew cab, twin range trans., sound condition, 6 cyl. 1st \$1400 cash takes. Call David at 235-5881 days, 941-7196 eves.

166 PICKUPS, TRUCKS

'76 CHEVY 1/2 ton truck \$2325/best offer. 254-3740 eves., 257-2042 DWH

'69 FORD flatbed, good cond. \$900 or best offer. Call 235-4880.

1967 POWERWAGON, 4x4, 1/2-ton crew cab, twin range trans., sound condition, 6 cyl. 1st \$1400 cash takes. Call David at 235-5881 days, 941-7196 eves.

166 PICKUPS, TRUCKS

'76 CHEVY 1/2 ton truck \$2325/best offer. 254-3740 eves., 257-2042 DWH

'69 FORD flatbed, good cond. \$900 or best offer. Call 235-4880.

1967 POWERWAGON, 4x4, 1/2-ton crew cab, twin range trans., sound condition, 6 cyl. 1st \$1400 cash takes. Call David at 235-5881 days, 941-7196 eves.

166 PICKUPS, TRUCKS

'76 CHEVY 1/2 ton truck \$2325/best offer. 254-3740 eves., 257-2042 DWH

'69 FORD flatbed, good cond. \$900 or best offer. Call 235-4880.

1967 POWERWAGON, 4x4, 1/2-ton crew cab, twin range trans., sound condition, 6 cyl. 1st \$1400 cash takes. Call David at 235-5881 days, 941-7196 eves.

166 PICKUPS, TRUCKS

'76 CHEVY 1/2 ton truck \$2325/best offer. 254-3740 eves., 257-2042 DWH

'69 FORD flatbed, good cond. \$900 or best offer. Call 235-4880.

1967 POWERWAGON, 4x4, 1/2-ton crew cab, twin range trans., sound condition, 6 cyl. 1st \$1400 cash takes. Call David at 235-5881 days, 941-7196 eves.

166 PICKUPS, TRUCKS

'76 CHEVY 1/2 ton truck \$2325/best offer. 254-3740 eves., 257-2042 DWH

'69 FORD flatbed, good cond. \$900 or best offer. Call 235-4880.

1967 POWERWAGON, 4x4, 1/2-ton crew cab, twin range trans., sound condition, 6 cyl. 1st \$1400 cash takes. Call David at 235-5881 days, 941-7196 eves.

166 PICKUPS, TRUCKS

'76 CHEVY 1/2 ton truck \$2325/best offer. 254-3740 eves., 257-2042 DWH

'69 FORD flatbed, good cond. \$900 or best offer. Call 235-4880.

1967 POWERWAGON, 4x4, 1/2-ton crew cab, twin range trans., sound condition, 6 cyl. 1st \$1400 cash takes. Call David at 235-5881 days, 941-7196 eves.

166 PICKUPS, TRUCKS

'76 CHEVY 1/2 ton truck \$2325/best offer. 254-3740 eves., 257-2042 DWH

'69 FORD flatbed, good cond. \$900 or best offer. Call 235-4880.

1967 POWERWAGON, 4x4, 1/2-ton crew cab, twin range trans., sound condition, 6 cyl. 1st \$1400 cash takes. Call David at 235-5881 days, 941-7196 eves.

166 PICKUPS, TRUCKS

'76 CHEVY 1/2 ton truck \$2325/best offer. 254-3740 eves., 257-2042 DWH

'69 FORD flatbed, good cond. \$900 or best offer. Call 235-4880.

1967 POWERWAGON, 4x4, 1/2-ton crew cab, twin range trans., sound condition, 6 cyl. 1st \$1400 cash takes. Call David at 235-5881 days, 941-7196 eves.

166 PICKUPS, TRUCKS

'76 CHEVY 1/2 ton truck \$2325/best offer. 254-3740 eves., 257-2042 DWH

'69 FORD flatbed, good cond. \$900 or best offer. Call 235-4880.

1967 POWERWAGON, 4x4, 1/2-ton crew cab, twin range trans., sound condition, 6 cyl. 1st \$1400 cash takes. Call David at 235-5881 days, 941-7196 eves.

166 PICKUPS, TRUCKS

'76 CHEVY 1/2 ton truck \$2325/best offer. 254-3740 eves., 257-2042 DWH

'69 FORD flatbed, good cond. \$900 or best offer. Call 235-4880.

1967 POWERWAGON, 4x4, 1/2-ton crew cab, twin range trans., sound condition, 6 cyl. 1st \$1400 cash takes. Call David at 235-5881 days, 941-7196 eves.

166 PICKUPS, TRUCKS

'76 CHEVY 1/2 ton truck \$2325/best offer. 254-3740 eves., 257-2042 DWH

'69 FORD flatbed, good cond. \$900 or best offer. Call 235-4880.

1967 POWERWAGON, 4x4, 1/2-ton crew cab, twin range trans., sound condition, 6 cyl. 1st \$1400 cash takes. Call David at 235-5881 days, 941-7196 eves.

166 PICKUPS, TRUCKS

'76 CHEVY 1/2 ton truck \$2325/best offer. 254-3740 eves., 257-2042 DWH

'69 FORD flatbed, good cond. \$900 or best offer. Call 235-4880.

1967 POWERWAGON, 4x4, 1/2-ton crew cab, twin range trans., sound condition, 6 cyl. 1st \$1400 cash takes. Call David at 235-5881 days, 941-7196 eves.

166 PICKUPS, TRUCKS

'76 CHEVY 1/2 ton truck \$2325/best offer. 254-3740 eves., 257-2042 DWH

'69 FORD flatbed, good cond. \$900 or best offer. Call 235-4880.

1967 POWERWAGON, 4x4, 1/2-ton crew cab, twin range trans., sound condition, 6 cyl. 1st \$1400 cash takes. Call David at 235-5881 days, 941-7196 eves.

166 PICKUPS, TRUCKS

'76 CHEVY 1/2 ton truck \$2325/best offer. 254-3740 eves., 257-2042 DWH

'69 FORD flatbed, good cond. \$900 or best offer. Call 235-4880.

1967 POWERWAGON, 4x4, 1/2-ton crew cab, twin range trans., sound condition, 6 cyl. 1st \$1400 cash takes. Call David at 235-5881 days, 941-7196 eves.

166 PICKUPS, TRUCKS

'76 CHEVY 1/2 ton truck \$2325/best offer. 254-3740 eves., 257-2042 DWH

'69 FORD flatbed, good cond. \$900 or best offer. Call 235-4880.

1967 POWERWAGON, 4x4, 1/2-ton crew cab, twin range trans., sound condition, 6 cyl. 1st \$1400 cash takes. Call David at 235-5881 days, 941-7196 eves.

166 PICKUPS, TRUCKS

'76 CHEVY 1/2 ton truck \$2325/best offer. 254-3740 eves., 257-2042 DWH

'69 FORD flatbed, good cond. \$900 or best offer. Call 235-4880.

1967 POWERWAGON, 4x4, 1/2-ton crew cab, twin range trans., sound condition, 6 cyl. 1st \$1400 cash takes. Call David at 235-5881 days, 941-7196 eves.

166 PICKUPS, TRUCKS

'76 CHEVY 1/2 ton truck \$2325/best offer. 254-3740 eves., 257-2042 DWH

'69 FORD flatbed, good cond. \$900 or best offer. Call 235-4880.

1967 POWERWAGON, 4x4, 1/2-ton crew cab, twin range trans., sound condition, 6 cyl. 1st \$1400 cash takes. Call David at 235-5881 days, 941-7196 eves.

166 PICKUPS, TRUCKS

'76 CHEVY 1/2 ton truck \$2325/best offer. 254-3740 eves., 257-2042 DWH

'69 FORD flatbed, good cond. \$900 or best offer. Call 235-4880.

1967 POWERWAGON, 4x4, 1/2-ton crew cab, twin range trans., sound condition, 6 cyl. 1st \$1400 cash takes. Call David at 235-5881 days, 941-7196 eves.

166 PICKUPS, TRUCKS

'76 CHEVY 1/2 ton truck \$2325/best offer. 254-3740 eves., 257-2042 DWH

'69 FORD flatbed, good cond. \$900 or best offer. Call 235-4880.

1967 POWERWAGON, 4x4, 1/2-ton crew cab, twin range trans., sound condition, 6 cyl. 1st \$1400 cash takes. Call David at 235-5881 days, 941-7196 eves.

166 PICKUPS, TRUCKS

'76 CHEVY 1/2 ton truck \$2325/best offer. 254-3740 eves., 257-2042 DWH

'69 FORD flatbed, good cond. \$900 or best offer. Call 235-4880.

1967 POWERWAGON, 4x4, 1/2-ton crew cab, twin range trans., sound condition, 6 cyl. 1st \$1400 cash takes. Call

CHEVROLET

'71 CHEVELLE 350, 4 spd., extras \$1495. Call 422-6217, 449-5628

'80 CORVETTE, auto., \$11,500/off. after 6 PM 638-7752

'78 BLAZER, low mi., brown & white, \$6000 or best offer. 672-9641.

BANK REPOSSESSION

79 MONZA 2 - 2 HATCHBACK 4 spd. with only 6106 miles (4N1B11) Repossession Price \$3982.44. With finance OAC. See Repossession Mgr. WHOLESALE MOTORS Ph. 838-1222 2909 N. Nimitz Hwy.

DATSUN

'72 240 Z 5 spd. trans., good cond \$3000. Ph. 237-8611 eves.

MECHANIC'S SPECIAL: '70 DATSUN 510, 4 dr., standard. If cars are your hobby this one will keep you busy. I don't know what's wrong but for \$300/off. you can play with it to your heart's content. Call Kay 235-5881 days or 254-1963 eves.

'72 1200, 4 spd., 30 MPG. runs great, needs body work, \$600. 737-2145, eves.

DATSUN

'79 DATSUN 210, 4 spd., \$2700 or take over payments. Call 624-9054

'71 DATSUN runs well \$600 or best offer. Call 254-3340.

DODGE

'77 ASPEN, 4 dr. in good cond. \$1500. \$1500. Call Shan at 531-7302 10 a.m. to 6 p.m.

FOR SALE: Just arrived from mainland 1976 Dodge Colt coupe \$1800 or best offer. Call 247-0683

'77 ASPEN station wagon, 6 cyl., economical, 8000 mi. \$3500/off. 537-4665

'77 DODGE Charger Daytona, excl. cond. \$3200/off. Ph. 833-9603.

66 DODGE Coronet, 2 dr. sedan. Call evenings. 261-6226

FIAT

'76 FIAT X19, excl. cond., 30 mpg. \$3800. Call 254-2801 eves.

LEAVING Islands, must sell: '75 Fiat X1-9, good cond. \$3000/best offer. Ph. 833-7569

FORD

'73 MAVERICK, 6 cyl., std., good cond, \$600 or offer. Ph. 262-9562

'65 CLASSIC Mustang, good condition \$1850 or best offer. Call 262-2135

'75 FORD Maverick, good condition, 23,700 mi. Call 455-3474

'76 ELITE, 2 dr., air, auto., excl. in/out - best offer. 261-5512

66 MUSTANG Boss 302, Shelby cpe., stand. new paint, radials. 734-6297

'75 PINTO economy car only 44,000 mi. \$1500/best offer, leaving. 254-4193

HONDA

'76 CIVIC, low mi., excl. cond., new tires \$2800/off. 261-1532 eves.

'76 HONDA CIVIC, 4 spd., white, good cond., \$2400. Call 261-1111.

81 HONDA Prelude 5 spd., less than 3 mos. old. AM/FM, cassette w/equalizer & sunroof \$8500/best offer. 689-6856.

HONDA

'76 WGN: 4 spd., 4 dr., reg. gas, 28 mpg. excl. cond. \$2895/off. 623-8019

'76 ACCORD 5 spd., AM/FM cassette, excl. cond. \$3850/best offer, 533-3295.

MAZDA

'80 MAZDA GLC, hatchback, 4 spd., rust-proofed, 5 yrs. warranty, AM/FM stereo, \$4500. Ph. 623-8557

MERCEDES

'72 280SE 4 dr. (P20865) if you are looking for a jewel in a Mercedes, this is it. With only 17,125 original miles. \$7975. WHOLESALE MOTORS Ph. 838-1222 2909 N. Nimitz Hwy.

MERCURY

'68 COUGAR ET, slotted mags, needs work. After 4, 456-9529

'70 COUGAR 428 CJ, extras \$1300/off. Phone 239-7536

MG

'69 MG Midget \$2100, excl. cond. Call 523-2813

'76 MG Midget, good engine, needs new top \$2200. Call 262-8519 eves.

OLDSMOBILE

'73 CUTLASS Supreme Classic, excellent shape, Michelins, power steering, stereo plus more. See to appreciate \$1700/off. Call Rick at 261-4923

BANK REPOSSESSION '78 CUTLASS SUPREME 2 dr., many extras incl. split seat with only 23,424 miles—sharp (\$65300) Repossession Price \$4779.64. With finance OAC. See Repossession Mgr. WHOLESALE MOTORS Ph. 838-1222 2909 N. Nimitz Hwy.

PLYMOUTH

'74 PLYMOUTH Fury, new radiator & carburetor for parts or fix-up \$150. 261-3553

FREE! FREE! ONLY AT CAR CITY 18-mo./18,000-mi. Limited Warranty '77 DODGE 4x4...\$588 4 dr. auto., power steering, air. (56326) '73 BLAZER...\$2888 V8, auto., power steering (8E150) '77 SUBARU 4x4...\$2988 Station wagon, 4 spd. (2E621) '78 SUBARU BRAT...\$3788 4x4 pickup (550790) '73 MALIBU...\$488 4 dr. auto., air (9E937) '72 NEW YORKER...\$388 4 dr., loaded (9E3594) '79 PINTO, 4 cyl...\$3288 Auto., power steering, only 13,000 mi. (2E5942) '73 MONTE CARLO...\$1088 Loaded with accessories (2A9853) '78 VOLKS CONVEYER...\$5588 4 spd., 300. (9E2574) '74 VOLKS DASHER...\$1888 4 dr. auto. (5A1996) '78 GRAND PRX...\$3288 2 dr. cpe. (9E8734) '77 CAMARO...\$3288 Auto., power steering, air (1C79) '66 MUSTANG...\$488 6 cyl., power steering (4E7599) '79 DATSUN...\$3188 2 dr. auto. (4E4511) 2845 Kilihau St. Diamond Rd. side of Kelly's Ph. 833-3017

PLYMOUTH

'71 SCAMP, 6 cyl., excl. interior, body & running. Air, good tires, low mi. \$1550. Call 261-2455.

PONTIAC

'79 TRANS AM fully loaded, excl., leaving must sell \$5900/off. 737-5267

'79 BONNEVILLE, loaded w/extras, make offer. Call 235-8562 eves.

'76 PONTIAC compact station wagon, radio, air, luggage rack, excl. cond. \$1125. Call 423-1007.

TOYOTA

'72 CORONA deluxe, excl. cond., \$1100. Call 946-1770

TOYOTA

'74 COROLLA new paint/brakes, excl. cond. \$2100/off. 261-7042

'72 COROLLA station wagon, new cond., \$1500. Ph. 262-8964

VOLVO

'78 265 GL, excl. cond. loaded, quick sale! \$7500/off. 254-3571

VOLKSWAGEN

'74 VW Bug, low mi., radial tires, just tuned, excl. cond. \$2250 or best offer. 259-5977 eves.

'74 VW BUG, low mi., radial tires, just tuned, good cond. \$2250/best offer. 259-5977 eves.

VOLKSWAGEN

'76 VW Van, 7 passenger, good condition. Asking \$3500/off. Call 261-0249

'69 BUG chrome rims, weber, \$1800/best offer. Call 262-4616

'68 VW Bug, rebuilt engine, needs work but runs. New lic. \$350. 623-7814, eves.

'74 VW 412 Squareback, excl. cond., after 4 p.m. wklys. 841-8351.

'75 RABBIT 2 dr., 4 spd., \$1500. Call 488-0304.

'75 SCIROCCO 4 spd., new paint, air, \$3500. Ph. Connie 536-9337 bus.

'65 VW Bug outstanding cond. \$2200/best. Call 257-3134 DWH, 254-4604 AWH.

VOLKSWAGEN

'71 VW Squareback, not running. Body & upholstery in good shape. \$900/off. 833-4581 ask for 10, between 8 to 4 pm

'71 SUPER Beetle, excl. cond., new aqua marine metallic blue paint, new Michelins/Mac Pherson struts/brakes/generator and shocks, light blue padded interior with white seats. Cassette stereo. Mechanically sound. Must see to appreciate. \$2150/off. Call Chris 261-4923

'71 VW Bug, new paint, radials, Hurst shift. Best offer. 531-2879

'73 VW. Super Beetle, convertible, semi auto, excl. cond. \$3150 262-5388

DATSUN OF WAIPAHU WAHIAWA

Want you to be driven FREE!

\$350 WORTH OF GAS GUARANTEED WITH EVERY NEW DELUXE* DATSUN

Does not include Datsun 210 Standard. WITH THE PURCHASE OF ANY NEW '80 OR '81 DELUXE DATSUN NISSAN—HAWAII WILL GUARANTEE YOU \$350 WORTH OF UNION OIL "MONEY." SO MAKE YOUR BEST DEAL AT DATSUN OF WAIPAHU OR WAHIAWA WHERE "YOU BUY A CAR FROM A FRIEND!" OFFER GOOD THRU MARCH 8, 1981. RETAIL PURCHASER ONLY. 1912 Wilikina Drive Ph. 621-0761

84-119 Farrington Hwy. Ph. 671-2611	
Doug Mossman's SPECIALS of the week!	
'76 MG Midget Lic. 1B5176 \$2480	'76 Fiat Spider Lic. 2F7583 \$3380
'79 Triumph Spitfire Lic. 4F2268 \$4080	'77 2+2 Lic. 4F9275 \$5880

Cars subject to prior sale, plus tax and license

OPEN 7 DAYS A WEEK

PUBLIC NOTICE
BANK REPOSSESSION-OWNER TRANSFERS
NO CASH needed with approved credit
Ask about 18-month or 18,000 mile warranty
'79 Mazda GLC 3 dr. \$3169.16
'70 DATSUN 510 4 spd. (4F9636)
'77 Camaro LT...\$4381.77
Many extras, incl. air (2E808)
'77 Firebird...\$3794.53
Black, many extras (8E3548)
'73 Monte Carlo...\$1267.38
2 dr. Loaded (5A9088)
ALL CARS STORED AT
WHOLESALE MOTORS
Trade-In Accepted Financing Avail.
ALSO OPEN SUNDAY 2909 N. Nimitz Hwy.
dba Airport Ph. 838-1222

CASH FOR CARS
WE DESPERATELY NEED FRESH USED CAR STOCK THIS WEEK!!
TOP PRICES PAID
by
VOLVO HAWAII
487-7974
98 075 Kam Hwy., Ala., Opposite Pearlridge

Transportation Specials!

'70 PLYMOUTH Satellite cpe., 8 auto., p/e. (E4471)	\$395
'72 FORD WAGON Country Squire, 8 auto., p/s. (7C4122)	\$395
'72 BUICK Skylark cpe., 8 auto., p/s. (4B4816)	\$395
'72 MALIBU CPE. 8 cyl. auto. (5A8315)	\$395
'74 DODGE COLT 2 dr. cpe. (8A4494)	\$595
'73 MUSTANG CPE Auto. (3C8082)	\$995
'73 AMC GREMLIN 2 dr. sdn. (5W9013)	\$995
'71 FIREBIRD Cpe. auto. (5B5258)	\$995
'73 CAMARO Auto, cpe. (4F4456)	\$995
'73 PONTIAC LeMans Cpe., 8 auto., (5E5532)	\$995
'74 MALIBU 4 dr. sdn. auto. (T8713)	\$995
'75 SUBARU 2 dr. hdp. (1C2787)	\$995
'74 MONTE CARLO 8 auto., p/e (6C1100)	\$995
'75 DATSUN B210 Auto (4C2834)	\$1995
'74 FIAT X19 Cpe., 4 spd. (X190)	\$2595
'79 CHEVETTE 4 dr. sdn. auto. (2F5108)	\$3295
'73 VW BUS Auto (8A3129)	\$3995

WAIPAHU AUTO
671-2871

BAKERS DOZEN SPECIAL

WE'RE DEALING ON 1980 FIATS
BIG \$1000 Buyer's Bonus For 1980 Brava \$800 Buyer's Bonus For X19 \$500 Buyer's Bonus For 1980 Strada
Plus a good supply of Spiders. HURRY for your Best Deal Plus excellent transportation specials.
'78 CHEVY Silverado p/u, 1/2 ton, Diesel fully equipped. Hurry this won't last. (5th. V648A) \$6995
'74 DATSUN B210 Clean, 4 spd., (Stk. P189) \$2381
'80 VOLVO 242 SRA Auto., reduced for quick sale — (A390) \$9000
'77 DATSUN 710 4 dr., super clean. (Stk. 80146) Reduced to \$2581
'74 SUBARU 2 dr. cpe., (80042) Reduced for quick sale \$1981
'77 CHEVY Malibu Wgn. 9 pass., super room, + air. makes excl. taxi. (Stk. 80158) Reduced for quick sale \$2381
'79 FIAT STRADA v/c, 5 spd., like new. Low mi. (F555A) \$4995
'79 VW RABBIT Low mi., 4 dr. sdn., (P184) \$4995
'70 VOLVO 142 (P192) \$2495
'76 MERCURY MONTEGO Excl. transportation (V880A) \$1695
'78 VW DASHER (F905A) 4 spd. immaculate \$3495
'77 FORD MUSTANG Classic convertible (80L R193) Super Clean \$6595
'74 FORD GRAN TORINO Fully equipped plus CD radio (Stk. V848A) \$1995
'80 SUBARU GLF Like super new, 5 spd. Hurry \$5381
Good till Feb. 22nd
Jim Siemons Imports
Volvo Fiat
98-075 Kam Hwy., Ala Opposite Pearlridge
487-7974

SHELLY'S WILL NOT BE UNDERSOLD

'75 VW RABBIT, auto., 4 cyl., radio. 18,000-mi. or 18-mo. warranty incl. in price. (E7125)	\$1995
'78 NOVA CUSTOM, V8, auto., power steering, factory air cond. A give-away price! Low mileage. (5E7670)	\$2995
'77 PONTIAC BLUEBIRD, loaded with every conceivable option plus special stripe package! Car compared to new but must sell! (7E3977)	\$3995
'75 CORDOBA Hdp., V8, auto., power steering, air cond., bucket seats, new paint. Remarkable motor car! (2C1155)	\$1995
'79 FORD LTD, 2 dr., hdp., air cond., vinyl top, low mileage. Buy at wholesale and SAVE! (P6328)	\$3995
'78 VW RABBIT Cpe., 4 spd., 4 cyl. Luxury stereo sound. Metallic silver. Must sell this weekend! (1F3423)	\$3333

FREE Shipment To Outer Islands
Plus 250 Additional Cars On Display!

'79 CUTLASS SUPREME, hdp., V8, auto., power windows, air cond., vinyl top, color coated wheels. Only 2 at this price! ACT NOW! (P6204)	\$5395
'73 CUTLASS SUPREME hdp., V8, auto., power steering, vinyl top. Price leader of the weekend. (5M1984)	\$995
'75 TOYOTA SR5 Cpe., 5 spd., radio, mags. Not many of these Toyotas for sale in Hawaii. Be 1st in line! (6A4546)	\$2995
'79 CAMARO Z28 This full-on Z has to be seen to be appreciated. V8, auto., air cond., rally wheels. 18,000-mi. or 18-mo. warranty included. (1F1328)	\$5995
'77 MATADOR WAGON, V8, auto., power steering, air cond., recent motor work. Taxi equipped. (3M8027)	\$1995
'76 CAPRI 2.8. genuine English Mini Lits Mags, V6, performance accessories, modified suspension make this Capri untouchable. See to believe! (3E9088)	\$3495

SHELLY CARS
Carmel Nimitz & Lagoon 836-0466

SHELLY MAZDA NEEDS YOUR CAR!

NEVER A BETTER TIME TO TRADE!

Your old car could be WORTH PLENTY on a brand new '81 SHELLY MAZDA... like this beautiful new GLC CUSTOM WAGON!

WE NEED USED CARS! THAT MEANS TOP CASH FOR YOUR TRADE-IN!

\$124⁹⁵ a month

NEVER LOOKED SO GOOD!

With as little as \$850 equity in your old car, this could be your payment!

Cash price \$5299 plus tax, lic. & prep. 17% APR. Del. pmt. price \$8347. 60 mo. financing. On approved credit.

SHELLY MAZDA

744 ALA MOANA BLVD. BOTH LOCATIONS OPEN DAILY
HONOLULU
PHONE 521-8880

WAIPAHU
94-712 Laka St. near E. Sunset Drive
PHONE 477-0111



Brides 1981

Advertising supplement to Hawaii Navy News, Hawaii Marine, Hawaiian Falcon and Sun Press newspapers. Cover photo of Mr. & Mrs. Gavin Yamasaki courtesy of Diamond Exchange.



HAIKU GARDENS THE WEDDING SHOPPE

THE BEAUTIFUL and enchanting grounds of Haiku Gardens in Kaneohe, left, has provided the setting for many glorious wedding ceremonies, and also a few television scenes. At right, the Wedding Shoppe on Kapiolani Boulevard offers complete bridal and formal wear — everything to properly accommodate a bride's wedding, except the groom.



LARRY'S WAI'AU BAKERY

In The Waimalu Shopping Center



Custom Decorated Wedding Cakes
Including Hawaiian Wedding Cakes

Call 488-8473

Wedding traditions are changing

So many traditions, so much fuss, such excitement! As we enter into the '80s, there are as many "somethings old" as there are "somethings new" about the attitudes and ceremonies which sur-

round the matrimonial contract.

Individual attitudes, of course, do vary, but there is a general trend in the United States today towards a traditional — even old-fashioned —

approach to marriage.

Time-honored customs, which have been handed down from the Victorian age and earlier, serve as guidelines for most young couples as they prepare to establish a life together.

From such charming customs as a young man's asking for her hand in marriage to the new bride's tossing the bouquet before leaving the reception, today's wedding practices have distinct similarities to those of the past.

In the weeks — even months — that precede the wedding, both the bride's and the groom's families become absorbed in planning for the wedding.

Wedding attire, flowers for the church and reception, food and drink are ordered; vows are composed, invitations are written; travel reservations are made, and even the champagne with which the newlyweds will be toasted is chosen.

In fact, weddings hold such importance in modern-day society that an estimated 26 million couples will wed in this decade, according to Barbara Toher, Editor-in-Chief of *Bride's* magazine. This number would seem to indicate that weddings have never been more popular.

A clear break has been made with the past, however, as it is no longer the popular attitude among women that they must "yield" to the man who chooses to "take" them as lawfully-wedded wives.

Today's bride chooses instead to enter into a partnership with a man, sharing equally with him the responsibilities, duties and pleasures.

The bride can expect her new husband to share in the household chores, just as she expects to augment their joint income with her salary.

The average age of American brides is 22 years, with women from urban areas being slightly older. Today's bride is four years older than the typical Victorian bride, whose average age was 18 years at the time of her wedding.

AINA HAINA JEWELERS

AINA HAINA'S
LARGEST SELECTION OF
GIFTS AND JEWELRY

DON'T LOSE ANY TIME . . .

HAVE YOUR WATCH AND FINE JEWELRY REPAIRED
BY AN EXPERIENCED JEWELER.

WATCH FOR OUR MAY ANNIVERSARY SALE
REMEMBER, QUALITY IS OUR MOST
IMPORTANT PRODUCT

AINA HAINA SHOPPING CENTER PH. 373-2655

A great place ...to fall in love ...to get married.

Waimea Falls Park is a wonderful setting for your wedding ceremony. Whether it be a simple or elaborate affair, or the intimate partnership of a few, in this special Hawaiian place, we have everything you need: lush green lawns, a waterfall, a modern restaurant, breezes, gardens abounding with exotic old fragrant blossoms, delicious pupus and island specialties from our restaurant — and a friendly staff to help you with your plans.

For the perfect beginning,
call 638-8511.



Waimea Falls Park

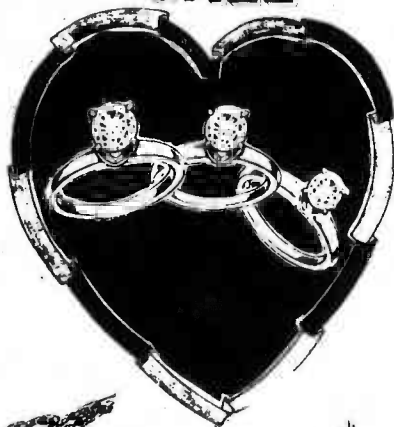
On October 1, 1980



THE DIAMOND EXCHANGE

HAWAII'S MOST COMPLETE JEWELRY CENTER

SWEETHEART SALE



1/4 CT. SOLITAIRE

- Set in 14K White or Yellow Gold
- Reg. \$636
- Our Price

\$299

1/3 CT SOLITAIRE

- Set in 14K White or Yellow Gold
- Reg. \$942
- Our Price

\$399

1/2 CT SOLITAIRE

- Set in 14K White or Yellow Gold
- Reg. \$1950
- Our Price

\$799

	Reg.	Sale
BABY "S" CHAIN 15"	\$36.00	\$10.99
BABY "S" CHAIN 16"	\$40.00	\$11.99
BABY "S" CHAIN 18"	\$48.00	\$12.99
"S" CHAIN BRACELET 7"	\$19.00	\$ 6.99



Heart Chains

New Arrivals

	Reg.	Sale
15"	\$257	\$126.00
16"	\$274	\$136.00
18"	\$308	\$149.00
20"	\$343	\$169.00
22"	\$377	\$179.00

HEART CHAIN BRACELET \$140 \$ 69.00



70% OFF JADE

THE FINEST HAWAIIAN JEWELRY

Made in our own shops by Hawaii's finest hand engravers

JADE RINGS	REG.	SALE
Green Marquis (Ladies)	\$ 385	\$115
Multicolor	\$ 306	\$ 91
JADE BEADED NECKLACES	REG.	SALE
Multicolor	\$ 390	\$117
Green, Red	\$1400	\$420
JADE PENDANTS	REG.	SALE
Large Doughnut with Multicolor Stones	\$ 230	\$ 69
Large Doughnut with Multicolor Stones	\$ 280	\$84
Small Doughnut with Chinese Character Centers	\$ 75	\$ 22
Large Doughnut with Fancy Gold Edging and Character Center	\$ 396	\$118
Carved Jade Pendants	\$ 170	\$ 51
Green, Lavender	\$ 550	\$165
	\$ 570	\$171
	\$ 116	\$ 48
Multicolor Jade Vase Pendant	\$ 260	\$ 78
JADE BANGLES	REG.	SALE
	\$ 360	\$108
	\$ 840	\$252
	\$ 875	\$262
TRIPLE MULTICOLOR BRACELETS	REG.	SALE
	\$1400	\$420



NEW ITEM

Hawaiian Crest

\$189

Barrel Bracelets

\$439	4mm
\$499	6mm
\$799	10mm

SPECIAL

18mm \$399
Tapered Ring

3mm Rope Chain w/ Barrel Clasp \$219

SPECIALS

BARREL BRACELET 8mm \$679

PRINCESS © PLUMERIA PENDANT \$139



Special Pendant \$99



Special Pendant \$159

ENGAGEMENT AND WEDDING SETS

Diamonds not included



Princess Ring \$149 5mm
\$239 8mm
\$279 10mm



Special Design \$149



Barrel Set \$269



French Mounting \$189



Two Initial Ring with Diamond \$399



Flat Rings \$119 5mm
\$199 8mm
\$229 10mm



Barrel Rings \$129 5mm
\$209 8mm
\$245 10mm

THE DIAMOND EXCHANGE

MAIN SHOWROOM: 1691 KAPIOLANI BLVD. • PH 955-1712, 955-0268
PAN AM BUILDING, SUITE 930 1600 KAPIOLANI BLVD. • PH 944-1122
WAIKAPU HONOLULU FEDERAL SAVINGS BUILDING, SUITE 204 • PH 671 3191

REGULAR SHOWROOM HOURS
MAIN SHOWROOM MON THRU FRI, 9:30 AM-6:00 PM, SAT 9:30 AM-5:00 PM
PAN AM AND WAIKAPU MON THRU FRI 9:30 AM-5:30 PM, SAT 9:30 AM-5:00 PM



MARIANS
A & A DIAMOND & JADE

SHIGERU KAMINAKA of Marians in Wahiawa, left, prepares spare ribs in a new, expanded kitchen which can accommodate small or large affairs. The dazzling diamonds at right are part of a wide selection for the bride and groom at A & A Diamond and Jade in Kaneohe Bay Shopping Center and Pearlridge.



Finding the right ring . . . after finding the right girl

You've got the right girl, your plans are made — all you really need now is the ring.

And choosing that special ring is very important, notes the Jewelry Industry Council, pointing out that today's young couple spends between \$750 and \$1,000 on the engagement ring.

Each an expenditure deserves serious consideration. Since the average young man is no gemological expert, it makes good sense to get as much professional help in

choosing a diamond as possible. The Council advocates "if you don't know diamonds, know your jeweler."

You jeweler will be more than happy to point out the four important aspects that determine the value of a diamond — the "four C's," as they are called. These include:

• **Cut:** Refers to the way a diamond is cut. This includes the popular round or "brilliant" cut; the rectangular emerald cut; the boat-shaped marquise; the oval, pear

and heart shape.

The skill and precision of the stone's faceting, polishing and proportioning are important. Only a precisely cut diamond can trap and concentrate light for maximum refractive fire.

• **Color:** Thought by some to be the most important determinant of diamond value. The ideal diamond is crystal clear.

Some diamonds are tinged with yellow or brown. A bit of color detracts from a diamond's value, but seldom dimin-

ishes the stone's lovely sparkle.

• **Clarity:** Refers to the internal quality of the stone. Ninety-nine percent of diamonds over half a carat show some internal imperfection or inclusion when viewed under a 10-power magnification.

A tiny white bubble, cloudy areas, nicks, cracks or a carbon spot are common inclusions. As these inclusions lessen a diamond's value, but seldom detract

• **Carat:** The measure

of diamond weight. One carat equals a mere 200 milligrams or 1/142nd of an ounce. Even Elizabeth Taylor's spectacular 69½-carat diamond weighs

slightly less than half an ounce, the same as an airmail letter. A carat is divided into 100 points; thus, a half-carat stone weighs 50 points.

Look early for a good photographer

When you and a professional photographer plan your wedding photography session well in advance of the occasion, you can be sure your portraits and candid

prints will capture all the emotion, excitement and sentiment of the nuptial celebration.

Begin to look for a professional photographer. See Page 5

A beautiful place . . .
to wed,
to dine,
to celebrate
. . . your special day.



Banquets, receptions and all manner of celebrations.
Accommodates to 350

HAIKU GARDENS
247-6671
46-336 Haiku Rd.
Kaneohe

Masako Costume
Rent Your Gown

(from Masako Costume)

and
get a discount
on your picture-taking from
Eaton Square Photography.

Ph: (808) 947-2696
OPEN 7 DAYS A WEEK
1441 Kapiolani Boulevard Suite 206



CLAMBAKE

LINDA ARMOUR of Clambake in Kaneohe, right, displays cheerfulness that always accompanies a full array of seafood served at wedding parties of any size.

Plan ahead for good photographs

From Page 4

rapher about six months before your wedding date; it's important to get an early start if the ceremony takes place during the peak times of year.

As soon as you compile a list of three or four candidates, make an appointment to visit each studio. Ask the staff to show you a sample of the wedding portraits the photographer made during the last year.

Professionals often have bridal consultants who handle many of the

details and organizational work so the photographer can concentrate on producing a variety of fine quality images.

Traditional bridal photography includes three distinct occasions for a professional's service.

The first phase, engagement photographs, are usually made in the studio.

The second phase is your bridal portraiture. Professionals recommend you schedule this sitting days before the actual

wedding. This way, the photographs of you in your bridal gown can be made in a suitable location — the studio, in your home, or outdoors.

The final set of photographs are made on your wedding day. A week or two before the nuptials, schedule a meeting with the photographer.

The final session can reassure you that the photographer will record each portion of the day's activities and photograph important friends and relatives.



Since 1942
Island
Wide Service

**Hawaiian
Luaus**
14-16 Courses
**Japanese
American**

- Weddings
- Birthdays
- Banquets
- Cocktail Parties
- Anniversaries
- Conventions
- Office Parties
- Funerals

**Marians
Catering**

With expanded facilities now
able to serve 50-100 people.

130 Mango Wahiawa
621-6758

CLAM BAKE

HAWAIIAN STYLE

A UNIQUE IDEA IN CATERING

In a Ballroom • On the Beach • In Your Own Back Yard
Formal Affairs to Casual Family Receptions






Let Clam Bake help you plan
an unforgettable wedding —
from unique ideas for locations
to a sumptuous seafood feast.

Call For Reservations
Ph. 235-8183
524-0324

New York — Hong Kong — Hawaii

FINE DIAMONDS

 0.25 ct. from \$195.	 0.30 ct. from \$225.	 0.50 ct. from \$495.
---	--	---

QUALITY DIAMONDS for Special Loves

 0.63 ct. VS Blue White \$2250.	 0.82 ct. VS Blue White \$2900.
 0.68 ct. VVS Blue White \$3100.	 0.98 ct. Beautiful Blue White \$2000.
 0.77 ct. VVS Fine White \$3300.	 1.03 ct. Great Bargain Blue White \$1650.

**PA DIAMOND
& JADE MARKET**

When buying Diamonds...come visit us and compare

Pan Am. Building • 6th Floor • Ph. 949-8700 • 949-5001
Kaneohe Bay Shopping Center • Ph. 235-6661

WHOLESALE & RETAIL



PARADISE PARK

THE PERFECT SETTING

WEDDINGS at Paradise Park, left, are truly special amidst 15 acres of tropical gardens. Ceremonies and receptions, large or small, can be accommodated outdoors, or in the Park's restaurant overlooking scenic Manoa Valley. At right, a table setting from The Perfect Setting is representative of many fine gifts available for the bridal couple at the store nestled on the second floor in the Ward Warehouse.



Woe to the penniless father of six single daughters

Woe to the father of six daughters when it comes time to marry them off! For, it is traditionally the bride's family who foots the bill for the bulk of the wedding expenses.

Although it is not unusual for the groom's family to share in the cost of the reception, it is most often assumed that the bride's family is responsible for the cost of the wedding ceremony and reception.

As pointed out in *Bride's* magazine, wedding costs are customarily divided as

follows.

The bride or her family usually pays for:

- Invitations, announcements and enclosure cards;
- Bride's wedding dress, veil and trousseau;
- Bouquets for wedding party;
- Flowers for church and reception;
- Engagement and wedding photographs;
- Fees for church, minister, organist,

• Transportation of bridal party to church and reception;

- Entire reception, including food, beverages, music, decorations and professional services;
- Groom's wedding ring and wedding gift;
- Gifts for bride's attendants;
- Hotel accommodations for bridesmaids from out of town.

The groom or his family usually pays for:

- Bride's engagement and wedding rings;
- Marriage license;
- Clergy member's or ceremony official's fee;
- Bride's bouquet;

- Boutonnieres for men of wedding party;
- Flowers for mothers and grandmothers;

- Bride's wedding gift;
- Gifts for the best man and ushers;
- Hotel accommodations

- tions for ushers from out of town;
- Complete wedding trip.

Avoiding troublesome cold sores

What do wedding bells, final exams and first dates all have in common? Tension!

And, for many brides-to-be, unsightly cold sores!

Officially known as herpes simplex, this pesky condition is actually a virus. Causing recurring blisters on the lips, it

affects over half the adult population and is second only to the common cold in prevalence.

Called a "latent" virus, herpes is present in the system of nearly everyone over the age of three. Once a person contracts the virus, it exists in a latent or dormant state through-

out his or her lifetime.

Because herpes simplex blisters frequently develop when a person has a cold or fever, the blisters have become known as cold sores or fever blisters.

But, herpes also frequently follow trauma, sunburn, exam stress, See Page 7

A Wedding In Paradise

Just imagine . . .
A wedding ceremony amid the lush, tropical greenery, vivid flowers, cool streams and exotic birds of Manoa Valley's Paradise Park . . . a place reputed to be one of the most perfect spots for a private and personalized wedding here on Oahu.

PARADISE PARK

Phone 988-6911

6-BRIDAL TAB

FITZ and FLOYD

The grace of the tropics translated into Flamingo Road salad plates and mugs by Fitz and Floyd. Accented in celadon and peach, they are framed by a pair of white Flamingo candleholders.

Personalized Bridal Registry & complete table settings available. Bridal Consultant available to help you plan your complete registry.

The Perfect Setting

Ward Warehouse (upper level)
M-F 10:00-9:00 S-S 10:00-5:00 528-6836
(Member National Bridal Service)



DIAMOND EXCHANGE MASAKO COSTUME

THE HANDS of Mr. and Mrs. Gavin Yamasaki, left, married August 9, 1980, display beautiful wedding rings from the Diamond Exchange on Kapiolani Boulevard. At right, Kamiko Yamamoto of Masako Costumes in the Ala Moana Building inspects a trousseau while assisting a bride on her wedding day prior to the ceremonies.



Enjoying bubbly: Before, during and after nuptials

Champagne! The very word means gaiety, happiness, celebration, romance, weddings.

What would a traditional wedding be without a Champagne toast to the bride and groom?

Authentic Champagne from France is not only the perfect drink to serve during nuptial celebrations, but there are also many related events before and after a wedding that call for the sparkling wine that Dickens described as "one of the elegant extras of life."

Here are some suggestions for enjoying Champagne before, during and after the wedding.

Before: Serve the bubbly at a Champagne shower, or to bridesmaids and ushers after a wedding rehearsal. You can also serve it at an engagement party or at an intimate dinner for members of the families.

During: Toast the bride and groom with Champagne poured from the 9-liter bottle, called a Salamanazar, which contains a full case of wine and serves 60 to 70 guests. The large bottle is a rarity, but can be obtained if ordered well in advance. And the empty bottle is a marvelous memento of the occasion.

After: Champagne is ideal for a bon voyage party en route to a honeymoon, a candlelight dinner to end the glorious day, or a wedding breakfast on the following day.

Champagne is also an ideal gift, either to give or to receive. A half-bottle is a nice touch when attached to gifts given to the couple.

What should you buy?
• Non-vintage brut is the most versatile Champagne. A blend of 20 to 30 wines, it can properly be served as an aperitif, throughout the meal, or at any time of the day or

night.

• Vintage and/or tete de cuvee Champagnes are for super occasions: first

anniversary, Valentine's Day, etc.

• Rose Champagne is another interesting

possibility. It is, after all, the traditional wine of lovers, and it has been associated with romance, and a tete-a-tete.

• Use tall, elegant tulip or flute glasses which show the wine to its best
• To open a bottle of Champagne properly and

safely, dry the bottle, remove the foil, untwist the wire muzzle and loosen it all around the neck of the bottle.

Invitation wording

How to word your wedding invitation? The traditional, formal style is as follows:

Mr. and Mrs. Charles Quentin Todd
request the honour of your presence
at the marriage of their daughter
Mary Paige

to
Mr. Abraham Lincoln
Saturday, the fifth of June
at three o'clock
Wood Manor Chapel
Carlton, Illinois

A separate invitation to the reception should accompany the ceremony invitation:

Mr. and Mrs. Charles Quentin Todd
request the pleasure of your company
on Saturday, the fifth of June
at half after four o'clock
Woods Hill Inn

Please respond
16 Elm Street
Carlton, Illinois

Windward Quik Print

wishes to extend their sincere best wishes
to you on your Engagement and coming

Marriage

We cordially invite you to come in
and inspect our very beautiful styles of
Wedding Invitations and Announcements

Correct forms, distinctive lettering
and designs for all the items you will
want to use in your

Wedding Stationary Ensemble

46-126 Kahuhipa St.

Kaunohi, Hawaii



How to avoid ugly fever blisters

From Page 6

emotional discomfort, the start of menstruation or intestinal upset.

Actually, this is because if you're upset or under emotional strain, or if a common cold drives your temperature up, you are causing a change in your

body chemistry. The lips become vulnerable because their cells are thinner than those in other parts of the body.

What to do? If you have a tendency towards herpes simplex blisters, be sure to avoid excessive exposure to sun, wind and

glare during those important days before the wedding.

At the first indication of itching and tingling that often precedes a cold sore or fever blister, apply a medicated lip ointment such as Blistex and massage it in thoroughly

WESTERN

Is In

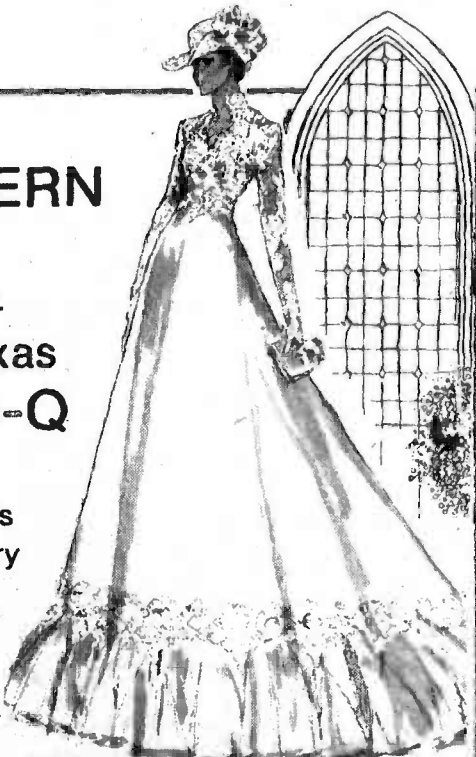
This Year.

Real Texas BAR-B-Q

- Pupus To Full Dinners
- Live Country Music Available

For assistance
in planning your
next event call

621-8112



TEXAS BAR-B-Q HOUSE

177 S. KAM. HWY., WAHIAWA

PHONE 621-8112



TEXAS BAR-B-Q

DONNA RENFRO of Texas Bar-B-Q in Wahiawa gives personal attention to small or large crowds for a successful party.

Showering couples with gifts

Traditions are a special part of the marriage ritual, from the time she (or he) says "Yes" until the newlyweds cross the threshold of their home for the first time as a married couple.

One of the traditions which has endured

origin of this event is lost somewhere in antiquity; however it probably began, as it has continued, for economic reasons — with friends and family "showering" the engaged couple with items they need for their new life together.

There are many lovely and romantic gifts which will enhance a couple's honeymoon sojourn, whether it's to be a two-week trip to distant climes or a two-day get-away in a local hotel bridal suite.

Some appropriate romantic and practical honeymoon shower gifts include:

- Scented candles and incense.
- Satin sheets and pillowcases.
- A paperback book on massage and a small bottle of body oil.
- A selection of "hearts and flowers" stationery for writing lovepoes to each other.
- Fragrant bubblebath and soap.
- A selection of sample-size liquors.
- Gourmet treats for "middle-of-the-night munchies."

- Favorite sports equipment or accessories.
- Champagne and two elegant glasses.
- A dozen rolls or cartridges of color film.
- A deck of cards and travel-size games for two (for entertainment during long flights, train or bus rides, or cruises).

8—BRIDAL TAB

Nursery Associates

Specializing in Rentals of Potted Palms

for Church & Home Weddings,

Reception/Banquet

Halls

Deliver & Pickup Service

Call 247-2734 for more information



Wedding Special!

100 3x5 photos with album \$199.00

(Good 'til June 30, 1981)

EATON SQUARE PHOTOGRAPHY
444 Hobron Lane / 3rd Floor
PH: (808) 949-8183



WEDDING PHOTOGRAPHY by GEORGE

Our portraits tell stories and our albums become storybooks. Let us capture your story... your romance.



Our minimum purchase price is \$199.00 which includes 18 - 8x10's. We have 20 packages to choose from. All packages include complete wedding coverage. Quality photography at a reasonable price. Afternoon or evening.

941-5651

ASK ABOUT OUR BRIDAL BOOKLET THAT IS A PERFECT PLANNING GUIDE FOR YOUR WEDDING.

The Wedding Shoppe

Requests the pleasure of your company at their

Bridal Fashion Show

Sunday, March 1st at 2:00 p.m.
Sheraton Waikiki Hotel,
Hawaii Ballroom

Reception following Show, Tickets—\$2.00 each

Featuring

Wedding gowns, Bridesmaids and Special Occasion dresses, Tuxedos, with displays of Flowers, Photography, Wedding Cakes, Invitations, China, and Reception ideas.

Call for Reservations—524-8075

Tickets Available at the Store, 1221 Kapiolani Boulevard

FREE PLANNING GUIDE

I would like my free copy of **The Complete Estate Planning Guide**. This 352-page book will give all the ins and outs of estate planning in simple, easy-to-understand language. At the same time show me a program that combines my military benefits and personal investments along with tax-saving tips that will help me keep more of what I earn during my lifetime.



NAME _____ RANK _____

MY ADDRESS IS _____ MARRIED/SINGLE _____

CITY _____ STATE _____ ZIP _____

HOME PHONE _____ WORK PHONE _____



NO POSTAGE
NECESSARY
IF MAILED
IN THE
UNITED STATES

BUSINESS REPLY CARD

FIRST CLASS PERMIT NO 2471 HONOLULU HI

POSTAGE WILL BE PAID BY ADDRESSEE

CAPITAL MATTERS

P.O. Box 31063

HONOLULU, HI 96820

